

TOP 40 AIRPLAY Monitor

• We Listen To Radio •

March 22, 1996 \$ 4.95 Volume 4 • No. 13

TOP 40 HIGHLIGHTS

MAINSTREAM

#1

ALANIS MORISSETTE

Ironie (MAVERICK/REPRISE)

*** AIRPOWER ***

CELINE DION • *Because You Loved Me* (550 MUSIC)

NEW RELEASES

BARENAKED LADIES • *Shoe Box* (REPRISE)

COLOR ME BADD • *The Earth, The Sun, The Rain* (GIANT)

GLORIA ESTEFAN • *Reach* (EPIC)

GARBAGE • *Only Happy When It Rains* (ALMO SOUNDS/GEFFEN)

MADONNA • *Love Don't Live Here Anymore* (MAVERICK/WARNER BROS.)

RHYTHM CROSSOVER

#1

MARIAH CAREY

Always Be My Baby (COLUMBIA)

*** AIRPOWER ***

NO RECORDS QUALIFIED FOR AIRPOWER THIS WEEK

NEW RELEASES

69 BOYZ • *Hoop In Yo Face* (FLAVOR UNIT/EASTWEST/IEEG)

AFTER 7 • *How Do You Tell The One* (VIRGIN)

COLOR ME BADD • *The Earth, The Sun, The Rain* (GIANT)

MADONNA • *Love Don't Live Here Anymore* (MAVERICK/WARNER BROS.)

SHAGGY FEATURING GRAND PUBA • *Why You Treat Me So Bad* (VIRGIN)

ADULT TOP 40

#1

HOOTIE & THE BLOWFISH

Time (ATLANTIC)

*** AIRPOWER ***

BODEANS • *Closer To Free* (SLASH/REPRISE)

SOPHIE B. HAWKINS • *Only Love (The Ballad Of Sleeping Beauty)* (COLUMBIA)

ADULT CONTEMPORARY

#1

CELINE DION

Because You Loved Me (550 MUSIC)

*** AIRPOWER ***

MARIAH CAREY • *Always Be My Baby* (COLUMBIA)

LIONEL RICHIE • *Don't Wanna Lose You* (MERCURY)

JIM BRICKMAN • *By Heart* (WINDHAM HILL)

NEW RELEASES

GLORIA ESTEFAN • *Reach* (EPIC)

MADONNA • *Love Don't Live Here Anymore* (MAVERICK/WARNER BROS.)

New Challenge For Labels: 'The Songs That Would Not Leave'

by Kevin Carter

Think of them as crockpot records for a microwave world. With top 40 radio polarized between PDs who look for active records that ignite quickly, burn brightly, then burn out, and PDs who are still driven primarily by research, a growing number of records don't become hits on their initial release but—thanks to research—enjoy rich and rewarding afterlives, long after the mental chalk outline has been drawn around them.

Among the titles finding new or ongoing success at radio long after relatively unspectacular initial chart runs in Airplay Monitor are Los Del Rio's "Macarena," After 7's "Til You Do Me Right," the Backstreet Boys' "We've Got It Goin' On," Simply Red's "Fairground," and Chris Isaak's "Somebody's Cryin'." The continued endurance of those

records—and others that became chart hits but took forever to come home, such as Everything But The Girl's "Missing" or Diana King's "Shy Guy"—says a lot about how stations expect records to react and how labels are having to realign promotion schedules.

Michael Plen, Virgin Records senior VP of promotion, says such surprise successes are all about faith in a record and the lost art of patience. "'Til You Do Me Right" is a case in point. "It took a long time for people to believe in that record," Plen says. "All it had going for it was sales and some early belief from a few key programmers. It came onto the Monitor charts and then fell off, but that never deterred us. We made it a hit for four or five key players and then used that information to sell it to other people."

Plen admits that the length of time it

Continued on page 6

NO DOUBT

BILLBOARD MAINSTREAM MONITOR

38 - 36

BILLBOARD TOP LP: 43 - 35

SOUNDCAN TOP SINGLES: 76 - 59

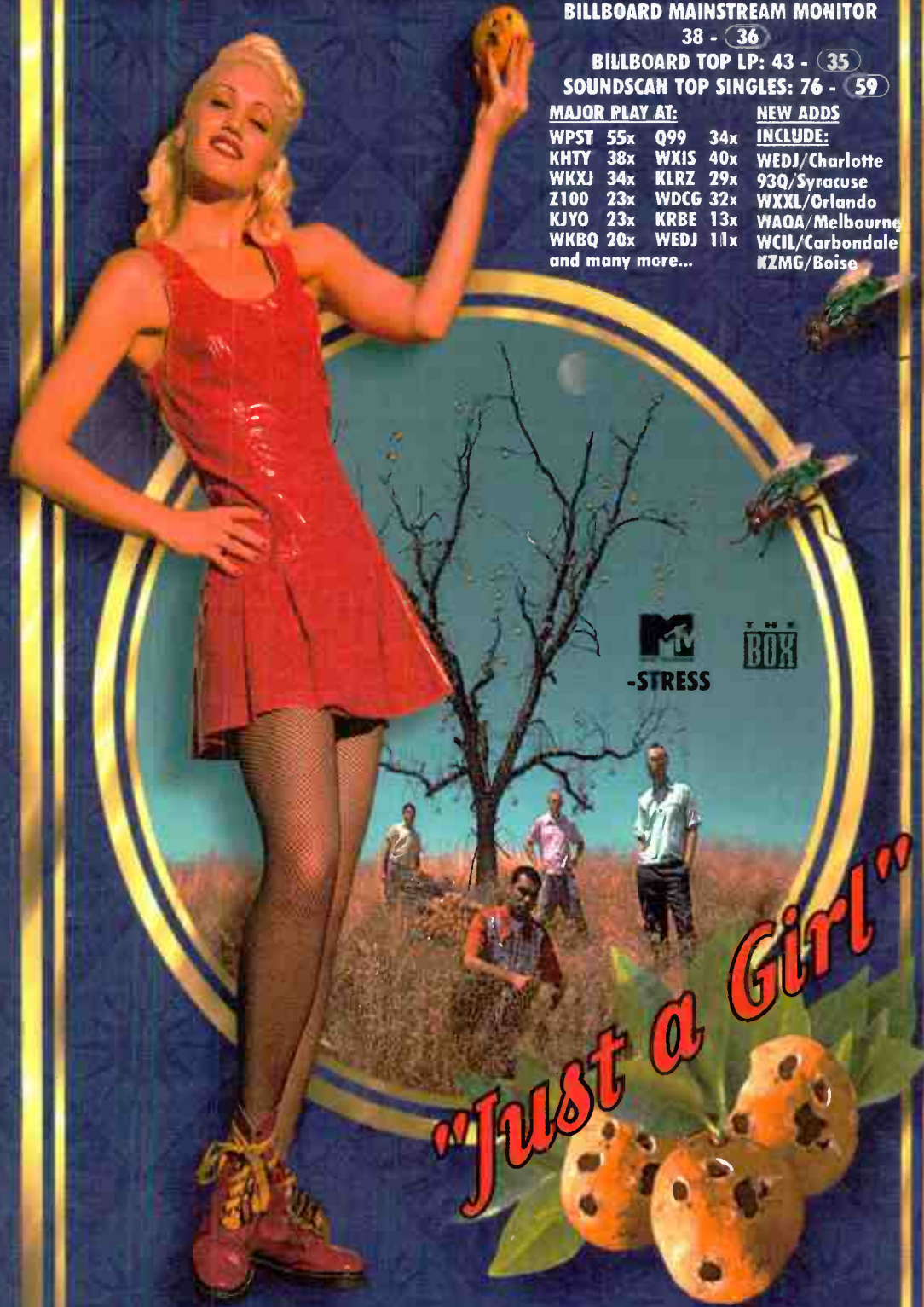
MAJOR PLAY AT:

WPST 55x Q99 34x
KHTY 38x WXIS 40x
WKXJ 34x KLRZ 29x
Z100 23x WDCG 32x
KJYO 23x KRBE 13x
WKBO 20x WEDJ 11x
and many more...

NEW ADDS

INCLUDE:

WEDJ/Charlotte
93Q/Syracuse
WXXL/Orlando
WAOA/Melbourne
WCIL/Carbondale
KZMG/Boise



Performing on THE LATE SHOW with DAVID LETTERMAN on 3/28!!

ON
TOUR
WITH
BUSH

From the album
"Tragic Kingdom"

APPEARING
ON
M
SPRING
BREAK

Produced by Matthew Wilder Mixed by Hobman & Paul Palmer

©1996 Trauma/Interscope Records. All rights reserved.

Trauma
RECORDS

INT/D/C-92580





Years of training

make this her finest

“reach”

performance yet.

GLORIA estefan

Official licensed product of
the Atlantic Committee For
The Olympic Games, Inc.



“Reach” is featured on
“Rhythm Of The Games™”
1996 OLYMPIC GAMES
Album on



Words and Music by
Gloria Estefan and Diane Warren

“reach” will also be on
Gloria’s new album, “Destiny”
due in stores June 4th.

GO FOR THE GOLD.



Produced and arranged by Emilio Estefan, Jr.
and Lawrence D’Orta

epic
epic records group

© 1996 Epic Records, Inc. All rights reserved. Epic Records is a division of Sony Music Entertainment Inc.

Kingston Exits Z100 For K-Rock PD Spot

Confirming weeks of speculation, Steve Kingston has exited his position as WHITZ (Z100) New York director of operations and programming after nine years and has been named PD of Infinity's modern rock outlet WXRK (K-Rock), Z100's crosstown rival. Kingston has been replaced by KRBE Houston PD Tom Poleman, who will arrive at Z100 in time to watch APD/MD Andy Shane cross the street to become MD at top 40/rhythm WKTU, reuniting Shane with former Z100 APD Frankie Blue.

Kingston signed a six-month noncompete clause with Z100, which WXRK GM Tom Chuisano says he intends to honor. No word

on how Kingston will spend the next six months, but current WXRK PD Andre Gardner will stay on for now, and Chuisano says Infinity hopes to find another place for him after Kingston becomes PD. K-Rock also officially announced that John "Whipping Boy" Wilbur would start as the station's night jock March 25.

Poleman, who has programmed Susquehanna's KRBE since 1993, previously worked at WKCI (KC101) New Haven, Conn., and WALK Long Island, N.Y. He becomes only the third PD of Z100 since its inception in 1983, following in the footsteps of Kingston and Scott Shannon

KEVIN CARTER AND JOHN LOSCALZO



TOP 40 TOPICS BY SEAN ROSS

Kvetching About Boss Old Morning Tradition

When Mancow Muller was guest-starring on WYNY New York, he spent most of his time attacking Howard Stern. Now that he's focusing on Chicago again, the WRCX (Rock 103.5) Chicago morning man has spent most of his time attacking his bosses on the air and getting suspended for it (Top 40 Airplay Monitor, March 15).

Assuming that Muller's problems are real—not a stunt—they're hardly novel. Attacking management on the air and being suspended for it is an exalted morning-show tradition. If you believe that the current crop of quasi-shock morning shows operates as its audience's emotional escape valve, then it follows that PDs and GMs should volunteer themselves to be abused on-air so that listeners get some relief from their lousy bosses.

The problem is that the tradition of joking about "the boss" on-air started at a time when DJs were, otherwise, relentlessly upbeat. Add it to today's morning-show tradition of beating up on everything else and you have our current series of high-profile morning men who start out being brash and funny and end up complaining that "Entertainment Tonight" is always shooting their bad side. "The boss" is just one more in a litany of decreasingly interesting complaints.

Besides, it would be nice if there was another way to manage talent that didn't involve morning shows and PDs being locked in an adversarial relationship over the length of breaks. Alliance, owner of the Young Country stations, has taken the opposite tack. Its PDs don't hold traditional aircheck sessions; one veteran air talent who works for Alliance told me it was the first time he'd ever been told to talk more.

But PDs shouldn't have to choose between "four breaks an hour" or the "glorious workers' paradise" when managing talent. So are there other options? One is to surround yourself with an air staff of former PDs, people who presumably understand the need to balance quality and quantity of content. This doesn't always work either. In my programming life, I have had four former PDs on the air. Many of them could listen to an aircheck and volunteer that they were talking too much. Being able to sense it while they were on the air was another matter. That being the case, one ends up taking the Alliance approach by default—giving up on the quantity of talk and working on quality in the hope that somebody's three-minute break will at least be gripping stuff.

It would be interesting to hear from anybody who has this one solved. Then we can move on to sales vs. programming, records vs. radio, and all the other stuff we'll still be arguing about in the rest home in 2017.

REWRITING HISTORY: Remember the

old KFYE (Y94) Fresno, Calif. (now "Kiss Country" KSKS)? A former AC station, KFYE went through several months of what is now believed to have been a smokescreen format—commercial-free rhythmic top 40—before switching to country in the early '90s. As memory serves, KSKS had a noncompete keeping it from going country for several months, and the apparent idea was to do as much damage to the market-leading dance stations as possible before going to the real format.

What was interesting about KSKS is that during its three-month lifespan, it claimed, like its competitors, to be rhythmic top 40, "top 40 for the market," etc. When it died, the publicity for the format change listed the old format as "urban." In the intervening years, I've seen this more than a couple of times, and not just with R&B stations that don't own up to playing R&B until it's a moot point. I've also seen it with stations that were hot AC that suddenly admitted to being top 40, right before changing to something else. It's happened again recently with a PD who told another trade publication that his new station wouldn't be as "urban" as the previous one. That station, of course, never considered itself "urban" at the time.

All of this tends to confirm the disingenuousness of those perpetrating the "top 40 for the market" argument. When there's no longer anything at stake, most GMs or PDs involved are more than willing to tell the truth. There's also something a little insidious about a successful station not wanting to be part of R&B or top 40 but a failed station having no qualms about trashing the reputation of the format it just left.

REPEATING HISTORY: So with WYNY New York gone, where have I been getting my country music fix? From a station 10 hours outside New York. WWKB Buffalo, N.Y.—the former WKBW—runs ABC's Real Country network and comes in great after sundown. The irony is that WKBW was one of the stations I used to DX as a teenager in Washington, D.C., when the station was a legendary top 40. The DX'ing of AM stations became relatively obsolete in the '80s, when most of the music AMs switched to news/talk of some sort. In recent months, I've noticed that I've had a few more excuses to go to AM for music: New York's WPAT-AM, doing an unusual soft AC blend until its sale closes and its switch to Spanish takes place; Jacor's WSAI Cincinnati, the country's most heavily produced big-band station; and WKBW, among them. There's also WJDM Elizabeth, N.J., which runs the Radio Aahs children's network on the new AM Expanded Band. There are, at any given time, a few small-market AMs doing top 40. So one wonders how long we have before somebody tries top 40 on a larger-market AM where a hole exists.



RADIOACTIVE BY KEVIN CARTER

Entercom Buys WAXQ, Trades It To Viacom

In most other weeks, this would have been the biggest story out of New York: After months of speculation, GAF will sell album WAXQ (Q104) for \$90 million to Entercom, which will trade it to Viacom for that company's modern/oldies Seatle combo, KNDD/KBSG. Viacom is launching a format study for WAXQ.

In other sales this week, American Radio Systems buys KLUC/KXNO Las Vegas from Nationwide for a reported \$11 million. ARS has also revived its \$66.5 million deal to buy classical WFLN Philadelphia and WTMI Miami.

Heritage Media has agreed to trade its Seattle properties, KRPM/KCIN, to EZ Communications for WEZB (B97)/WRNO/WBYU New Orleans. Both companies begin immediate sales agreements with their prospective stations.

Finally, in this week's strangest megapoly story, album WRZK Tallahassee, Fla., has flipped to top 40 WWLD (Wild 106) in a duopoly with three different sets of owners in the market. WRZK was sold to a partnership of Timm, Catamont, and HVS Broadcasting—Tally Radio. HVS' Jon Hill will be GM of the new station. Orlando, from crosstown WXSX, joins as MD. No PD is named.

PROGRAMMING: KQI PLAYS THE HITS

With morning man Dick Puritan gone, AC WKQI (Q95.5) Detroit moves to adult top 40 as "Detroit's continuous hit music station." Kim Stevens joins for middays from jazz/AC WJZW Washington, D.C., replacing Tom Sommers. Night jock Tom Baker also exits. PD Tom O'Brien is accepting tapes and resumés. Here's an hour of the new station: Toad The Wet Sprocket, "All I Want"; Take That, "Back For Good"; Pat Benatar, "Hit Me With Your Best Shot"; TLC, "Waterfalls"; Blues Traveler, "Run-Around"; Steve Winwood, "The Finer Things"; Mariah Carey, "One Sweet Day"; Goo Goo Dolls, "Name"; Gin Blossoms, "Found Out About You"; Paula Abdul, "Cold Hearted"; U2, "I Still Haven't Found What I'm Looking For"; and Sophie B. Hawkins, "Only Love."

It took longer than we thought, but Jacor's KHTS (93.3) Tampa, Fla., which had been simulcasting sister station, soft AC WDUV, is now simulcasting WFLZ Tampa, the radio home of "MJ & BJ" and evening maniac Bubba the Love Sponge, now heard at the tasteful drivetime hour of 4 p.m. PST. The change, which may be yet another stunt on the way to KHTS' intended format, coincided with Jacor's programming meetings in San Diego.

WTIC-FM Hartford, Conn., MD Tony Bristol has been named PD at WKCI (KC101) New Haven, Conn., replacing Steve Wilson.

Duff Lindsey, PD of R&B WJHM (102 Jamz) Orlando, Fla., signs a three-year deal to stay at WJHM under new owners OmniAmerica, owners of crosstown WXXL. Meanwhile, former WXXL GM Randy Rahe, who had gone to WJHM as NSM, exits following the sale.

B.K. Kirkland, PD of R&B WIKS New Bern, N.C., adds regional PD duties for Taylor Broadcasting, including AC WKQT, which will return to the air shortly as WMGV and carry WKZL Greensboro, N.C., morning man Jack Murphy. AC WJQI Norfolk, Va., flips to a modern-

based top 40 adult format as WPTW (the Point) under OM Rich Hawkins. P.m. driver Peter Tripp and overnigher Brian Michel stay on. Hawkins is looking for a morning show.

With Western Cities Broadcasting resumes control of KQKS (KS104) Denver from Century Broadcasting April 1; management is asking for top 40 record service to be sent directly to KQKS, 9191 Sheridan Blvd., Suite 202, Westminster, Colo., 80030. Attn: Mark Stevens.

Genla Radio Network's KLAA Alexandria, La., flips from country to AC. Pat Cloud, former PD (and current midday jock) at sister top 40 KQID moves over as PD... WHZR Logansport, Ind., flips from top 40 to country. PD/mornings Jason Addams and most of the staff remain on board.

Two former employees have filed a petition to deny the license renewal of WSTR (Star 94) Atlanta. Former sales reps Henry Bruen and Arlecia Duke are alleging "discriminatory practices against blacks and other minorities in hiring, promotions, compensation, and recruitment."

PEOPLE: SEX WARS IN SAN DIEGO

KKLQ (Q106) San Diego snags "The Love Doctor" from crosstown KFMB-FM (Star 100.7) for 8-10 p.m. Night jock Karen Kay moves to afternoons, replacing Jenna Foxx, who exits. KFMB PD Tracy Johnson wastes no time in inking Dr. Theresa L. Crenshaw, sex therapist and author of three books, including this week's release, "The Alchemy Of Love And Lust." The show will be called "Love Soup With Dr. T.L.C."

After weeks of loose talk, KGGI Riverside, Calif., PD Bob Lewis hires Michael Steele (ex-PD of KEDGE Omaha, Neb.) as APD, with an air shift to be announced. KGGI still needs nights, overnights, and an MD.

Look for KYSR (Star 98.7) Los Angeles to fill its long-vacant morning-show opening with ex-MTV jock Mark Goodman and Shirley the Stunt Girl from KIOI (K101) San Francisco. K101 also needs a production assistant and a producer for Don Bleu's morning show (Brian Holt exits to work for Joe Boxer). Also, Premiere Radio Network's Larry Morgan is now doing P/T at KYSR.

The stunting continues at WKTU New York this week, with Bill Lee doing mornings. Spotted in the hallways: Diane Pryor, who worked at the original WKTU.

KPWR (Power 106) L.A. stalwart Charlie Huero joins KFTM San Antonio, Texas, for afternoons... C.K. from KWIN Stockton, Calif., joins KYLD (Wild 107.7) San Francisco for P/T.

Here's the revised KUBE Seattle lineup: New APD/MD Lindsey Cipicic is in middays; Eric Powers moves from nights to afternoons, replacing Greg Valentine (206-526-7882); dance music coordinator Bobby O. is now doing 7-11 p.m.

After working P/T for ABC's hot AC format, veteran jock Gary Leigh is upped to afternoons for the format, replacing Michael Jason Taylor.

Former WXXL Orlando night jock Just Plain Mark (ex-KTBZ Houston) returns to the market for nights at Paxson rocker WJRR, teaming up with Zippy.

WDDJ Paducah, Ky., ups afternoon driver C.J. Steele to MD... Local college jock J. Pat Miller joins WBNQ Bloomington, Ill., for nights, replacing Gregg.

ON THE AIR

NEW STATIONS AND OTHER REPORTER CHANGES FROM BDS & AIRPLAY MONITOR

Effective with this week's issue, WKTU New York (PD Frankie Blue, MD Andy Shane, 212-704-3900) has been added to Airplay Monitor's top 40/rhythm-crossover panel. JERRY MCKENNA

Dees Blows KIIS With Mr. Happy



KIIS Los Angeles morning guy Rick Dees invited Adam Sandler into the studio recently to explain the subtle, dramatic subtext in Sandler's latest film, "Happy Gilmore." Later, Sandler showed Dees how to replace a divot during a hockey game.

Turn Your Heads And Cough



Like many Mardi Gras revelers, WZJM (Jammin' 92) Cleveland staffers celebrated Fat Tuesday by dressing up in funny costumes and acting goofy in public. Doing their share to keep up tradition are the station's "Masked Avengers": production director Tony Frazer, left, and MD Big Dave Eubanks.

Dog House Becomes The Birdcage



KYLD (Wild 107) San Francisco's morning Dog House, Elvis and J.V., decided to cement their partnership in a unique way: They got "married" on Valentine's Day. The ceremony was performed by a duly authorized Exxon station owner, left. Elvis, the blushing "bride," displayed his tastefully hairy cleavage, while "groom" J.V. prays for lightning to strike before he's asked to kiss the bride.

After A Crummy Winter, Life's A Beach



AC WYXR (Star 104.5) Philadelphia took a much-needed break from the harsh winter of 1996 with a day at the Jersey shore. Midday personality Porsche Foxx kicks back while broadcasting live and wonders how the rest of those poor slobs are doing back in Philly.

New York Enjoys A Side Order Of Bacon



Actor Kevin Bacon performs in a band with his brother Michael. Before a recent nightclub date, the guys made the "grip and grin" tour of New York radio stations, including WPLJ and WHZ (Z100). Shown above, from left, are WPLJ PD morning host Scott Shannon, co-host Todd Pettengill, Kevin and Michael Bacon, news anchor Naomi DiClemente, and producer John "Kato" Machay. Below, from left, are Z100 producer Elliot Segal, Patty Steele and Steve Cochran of the Z100 Morning Zoo, and Michael and Kevin Bacon, who cleverly managed to change clothes between appearances.



For The Record

In the March 1 profile of KHTY Santa Barbara, Calif., it was stated that KHTY had "wrested" the 18-34 lead from rival KTYD for the first time in 20 years. KTYD OM Paul Cavanagh responds that his station was actually beaten 18-34 by modern KJEE two years ago. Cavanagh also con-

tends that the Maximizer online version of the fall '95 Arbitron—which he believes to be more accurate—shows KHTY and KTYD tied in 18-34 with a 13.1 share. In addition, Priority Records' Greg Marella was inadvertently misidentified as KHTY PD Damion Young.

PUBLISHER: MICHAEL ELLIS
 EDITOR: SEAN ROSS
 MANAGING EDITOR: KEVIN CARTER
 DIRECTOR OF CHARTS: JERRY MCKENNA
 ADULT CHART MANAGER: STEVEN GRAYBOW
 CHART PRODUCTION MANAGER: MICHAEL CUSSON
 ASST. CHART PRODUCTION MANAGER: PAUL PAGE
 EDITORIAL PRODUCTION MANAGER: BARRY BISHIN
 ASSOC. EDITORIAL PRODUCTION MANAGER: MARCIA REPINSKI
 EDITORIAL PRODUCTION: MARTIN BROOMFIELD, SUSAN CHICOLA
 MARC GIAQUINTO, MARIA MANLICIC
 COPY EDITOR: CARL ROSEN
 ADVERTISING PRODUCTION MANAGER: LYDIA MIKULKO
 ADVERTISING PRODUCTION ASST.: CINDEE WEISS
 ADVERTISING ART DIRECTOR: RAY CARLSON

NATIONAL ADVERTISING MANAGER: JON GYNN
 ADVERTISING SALES: ART PHILLIPS, ANDREA THOMPSON
 CLASSIFIED ADVERTISING: LAURA RIVCHUN
 ADVERTISING SERVICES MGR.: MICHELE JACANGELO
 SALES ASSISTANTS: EVELYN ASZODI, ERICA BENGTSOHN,
 ALEX VITOULIS, ALYSE ZIGMAN

EDITORIAL ADVISOR: TIMOTHY WHITE
 PRODUCTION DIRECTOR: MARIE GOMBERT
 DIRECTOR OF MARKETING: ELISSA TOMASETTI
 CIRCULATION MANAGER: JEANNE JAMIN

©1996 BPI Communications
 1515 Broadway, New York, NY 10036
 5055 Wilshire Blvd., 7th floor, Los Angeles, CA 90036
 For subscriptions call: 800-722-2346

Billboard Music Group
 PRESIDENT: HOWARD LANDER

SOMETIMES SPARE DISEASE

S RIGHT IN YOUR OWN BACKYARD
OMMY BOY CONGRATULATES OUR GRAMMY WINNERS

COOLIO FEATU'RING L.V.[®]
"GANGSTA'S PARADISE"[™]
"GANGSTA'S PARADISE"
BEST RAP SOLO PERFORMANCE
FROM THE DOUBLE PLATINUM ALBUM GANGSTA'S PARADISE

NAUGHTY BY NATURE
POVERTY'S PARADISE
BEST RAP ALBUM
OVER ONE MILLION SOLD IN NORTH AMERICA



The Songs That Would Not Leave

Continued from page 1

takes to get certain records to fly sometimes messes up the marketing of a follow-up single. "Our game plan is usually flexible, but still not to the point where it matches the schedule of radio," he says. "When we come with the next track, we always hear, 'I'm still breaking the last one.'"

Plen says it's easy to lose promotional momentum in such situations. "Our lifeblood is still retail," he says. "Where is the record positioned in the stores? Are there any returns? Our sales department can't wait around for seven months to follow up a record." For those long-term call-out monsters, by the time the active audience is finished buying the record, the passive audience is just beginning to react favorably.

GET OFF THIS (PLEASE)

Plen cites two situations involving slow-breaking records from last year: Cracker's "Low" took 11 months to play out, he says, causing the second single, "Get Off This," to be rereleased three times and ultimately implode, because "Low" continued to grow and pulsate

'Records that test well at 50 spins are like doughnuts. They taste good, but are just empty calories'

—Marc Ratner

after the fact. Same with Shaggy's "Boombastic." "We released that record last March, and in December it was still a powerful recurrent," says Plen. During that time span, while "Boombastic" was enjoying success in many markets, the label attempted to release two follow-up singles, "In The Summertime" and "The Train Is Coming." According to Plen, neither one was taken seriously, as they had to live in the shadow of "Boombastic."

Jack Satter knows from patience. As senior VP of promotion for Jive Recordings, he's more than familiar with the Backstreet Boys record that was released Aug. 21, 1995, and is still generating more than 400 spins at pop radio. The reason the record is still breathing is the fragmented fashion in which it was played, according to Satter.

"It took a long time to develop at stations like KDWB Minneapolis, but thanks to their patience, it ended up being No. 1 for six weeks and still sits at 50 spins today," he says. "We've had over 100 pop stations playing it, but all at different times." He says the single has also become successful internationally. "If I had to do this all over again, I'd have broken it internationally first, then used that success story to break the record domestically on a much more productive schedule."

Satter was expecting a four-month run with the initial single and, in fact, had the follow-up record, "I'll Go Anywhere For You," ready to ship earlier this year. Because of the unforeseen prolonged life span of the first single, the second release date has been pushed back to April 29, leaving an eight-month gap between singles.

THE 'MISSING' LINK

Another record that should qualify for Medicare is "Missing" by Everything But The Girl, which broke out of South Florida early last year. KIOI (K101) San Francisco PD Casey Keating played it last April while programming WHYI (Y100) Miami. "[Y100 MD] Al Chio first heard it in the clubs, so we put it on the air and got instant reaction," Keating recalls. Atlantic

Records also exhibited patience when it worked the record several times in 1995. That patience has since been rewarded. "Missing" was the most-played record on the Top 40 Airplay Monitor Mainstream chart for the fourth straight week last week, making it one of the few records of this type with a successful chart run.

K101 also had beyond-the-grave success with the Pretenders' "I'll Stand By You." Keating says that although the station has played the song since last September, it remains a solid B. "It's a consistent top five tester with women 24-40, with no burn." Another K101 success story is "Somebody's Cryin'" by Chris Isaak, which the station started playing in May 1995. "It's also testing as a B-rotation record, and we can't get it to burn," Keating says. "It's been around longer than a lot of radio careers."

Reprise Records' VP of promotion Marc Ratner agrees. "Chris Isaak is the type of artist that drives promo people crazy," he says. "His stuff always seems to research a year later. The same situation happened with 'Wicked Game' a few years ago." It happened again recently with Isaak's "Go Walking Down There." About three weeks ago, WKTI Milwaukee PD Danny Clayton heard it on cross-town modern rocker WLUM and said, "We gotta be playing this." Although it was the single prior to the current "Graduation Day," Clayton says, "We think it's a wonderful song, and we've made a full commitment. It's a hallway fave, and it's already pulling curiosity calls."

MICROWAVE MENTALITY

Ratner, like his promotional counterparts at other labels, often sees that when a record or artist takes longer than four weeks to generate decent research, the "microwave mentality" of today's programmer tends to wish those records away, into the cornfield of stiffs. Any forward momentum is lost before those artists that require special handling begin to connect with their intended audience. Reprise is lucky enough to have almost an entire roster devoted to just that type of artist, including Enya, whose "Anywhere Is" has inched along at various stations since late last year.

Ratner says the major markets use call-out as a major gauge of success, but often finds it's a Catch-22. "How do you justify hanging on to a record to find out how it's really doing? There's usually a big difference between initial familiarity and long-term familiarity," he says. "A lot of programmers just can't devote eight to 12 weeks to a record." Although the BoDeans' "Closer To Free" has quickly become a call-out record, that song already had outside familiarity because of its "Party Of Five" TV exposure. However, Ratner says Toad The Wet Sprocket's "Good Intentions" from the "Friends" soundtrack took a long time to establish.

"Just by my own observations, I find it takes usually 200 spins per station until the real familiarity kicks in and you can get a realistic idea of a song's performance," says Ratner. "I've seen a lot of programmers make a decision about a song at the 60-70 spin level, and the results are like night and day."

The dilemma, according to Ratner, is, "How do you ask someone for a 200-spin commitment? Who gets to be that first guy, especially when it's someone whom people respect?" He says there are only a handful of stations that can actively influence other programmers. "That's the hardest job in promotion," he says. "It's easier to get the add than the necessary spins. The trick is to get a quality station to give us the 200 spins, because we find the call-out situation really changes." Many times, Ratner finds that when a record is tested after only 60 spins, it may test familiar with a chunk of dislike, but when tested after 200 spins, the call-out story changes drastically, and usually for the better.

"Records that test well at 50 spins are like doughnuts," says Ratner. "They might taste good, but they're just empty calories. It's those subtle foods that you learn to like as an adult that really matter. Those are the records that test late but end up lasting forever—the building blocks of your station's metabolism."

MONITOR PROFILE

Michelle S. Reinvents KMEL For The Eclectic Bay Area Market

This is the job KMEL San Francisco PD Michelle Santosuosso has been training for her entire career. "This was the most natural move I've ever made," she says. Santosuosso has been a fan of KMEL since age 19, when she first heard the station at a convention. When she worked with Kevin Weatherly and Guy Zapoleon at the original KZZP Phoenix, she used to fly to the Bay Area on weekends just to listen to the station. "When I got this job," she recalls, "Guy called me and said, 'Well, you finally made it to KMEL.'"

Between KZZP and KMEL, Santosuosso worked with Weatherly at KKLQ (Q106) San Diego before moving to New York as director of crossover promotion for RCA Records. Later, she joined former KMEL PD Keith Naftaly as APD of KKBK (the Beat) Los Angeles. When KMEL PD Dave Shakes moved to sister station KIOI in October 1994, Santosuosso got the call.

In recent months, KMEL has been in a fluid state musically, moving from its longtime R&B slant back to dance and going head to head with rival KYLD (Wild 107.7). "As a heritage

show.

"None of these players had ever done morning drive before," she says. "We wanted it to be a direct reflection of the multicultural lifestyle of the Bay Area. Traditionally, when you change something as large as your morning show, you usually see a ratings dip before it catches on, but if the latest AccuRatings are any indication, we've actually grown from where we were."

KMEL features block programming beyond the standard mix-show fare, including shows devoted to reggae, house music, and oldies. Even the public-affairs talk show, "Street Soldiers," has musical content. "That's why our [Broadcast Data Systems] spins may appear lower than Wild 107, because of our commitment to these other important musical genres," says Santosuosso.

San Francisco has rarely adhered to the usual industry template for top 40. "Those standards might hold true in Montana," Santosuosso says, "but you can't fit this market into any neat category. The music scene here is original and innovative. It's always been eclectic, dating back to the '60s with Haight-Ashbury, the Grateful Dead, Jefferson Airplane, etc. It's always been explosive here, nothing is traditional. We are the contemporary music station for the Bay Area. Keith Naftaly said that for years, and nobody believed him."

Here's a 3 p.m. sample of KMEL: Total, "No One Else"; Bucketheads, "The Bomb! (These Sounds Fall Into My Mind)"; Fugees, "Killing Me Softly"; Mariah Carey, "Always Be My Baby"; KE, "Strange World"; Mary J. Blige, "Not Gon' Cry"; Ice Cube, "You Know How We Do It"; Sandy & Papo, "La Hora De Bailar"; D'Angelo, "Lady"; Brandy, "Sittin' Up In My Room"; and Debra Laws, "Very Special."

Santosuosso says MD Joey Arbagey "has great ears and always fights for the records he believes in. He's responsible for getting artists like D'Angelo and Xscape on the air here. He's the one who keeps the soulful edge to the station. He's grown a lot here in a short time."

She also praises marketing director Katie Eyerly as being "completely locked into every movie company, and [she] has great relationships with everyone from Great America to MTV." Besides coordinating the KMEL Summer Jam, celebrating its 10th anniversary in August, Eyerly is overseeing the KMEL World Wide Web site on the Internet. "It was designed by a guy who designs rave fliers," says Santosuosso. "It's brilliant." Given the proximity to Silicon Valley and such computer-heavy schools as Stanford and Berkeley, more than 50% of Bay Area households have access to a computer. "This is a forward-thinking market, so we have to do it right," she says.

The most important consideration when changing a heritage station, according to Santosuosso, is not to bend to outside influences. "When you change your station at all, the armchair quarterbacking starts immediately. You have to have a clear vision of what's real and what isn't," she says. One of the biggest boosts Santosuosso received was a phone call of support from Kevin Weatherly. "He told me to stick to what I know, stay close to my market and my station. He said only you and your staff need to know what's going on and why."

"This is not a dictatorship here. KMEL continues to evolve in a fluid process, based on many individual personalities," she says. "I know we're doing the right thing. I've studied this station for eight years." **KEVIN CARTER**



Michelle S.
Program Director
KMEL San Francisco

'The music scene has always been explosive here, nothing is traditional'

station, you're always evolving," she says. "As an outlet targeted to young people, much like MTV, you have to continually reinvent yourself." Street research director Alex Mejia's sole duty is to be out every day, incognito, talking to young people about their favorite songs, DJs, and radio stations. Based on his input, "we're finding that dance records are top of mind," Santosuosso says. "Alex first felt it last summer, when he came to us with the Bucketheads and C&C Music Factory's 'Robi-Rob's Boriqua Anthem,' both of which have lasted forever."

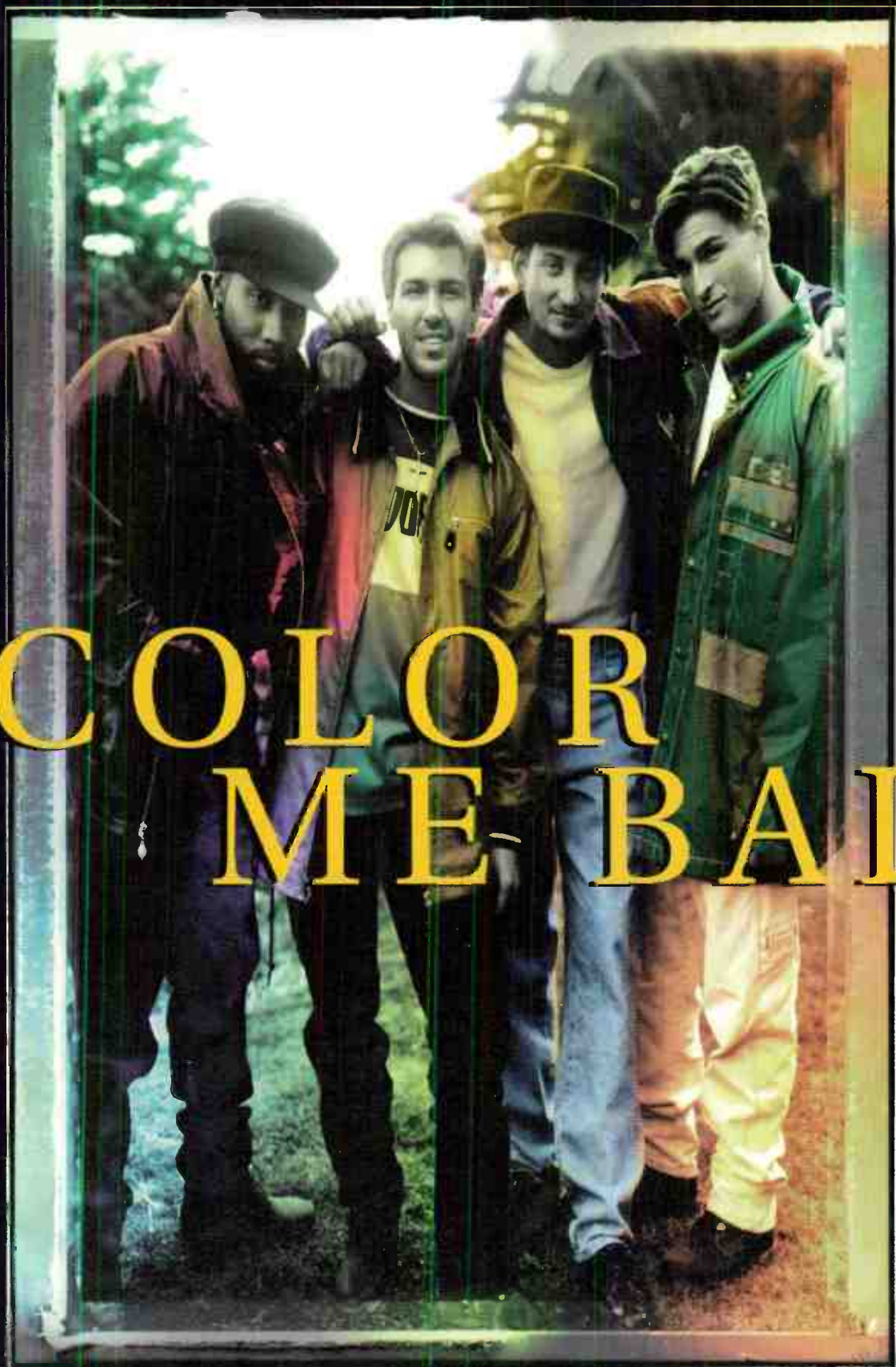
The dance music resurgence in San Francisco follows a similar boom at KPWR (Power 106) Los Angeles and the recent debut of WKUW New York. Make no mistake, "hip-hop is still important to this station. We didn't drop anything we already played. We simply added to it," says Santosuosso, noting that KMEL will still be early on such acts as 2 Pac, Rappin' 4-Tay, and D'Angelo. "Rap has broadened its appeal, especially since West Coast rap is so melodic."

An important factor in KMEL's change is the loss of Latino-targeted KHQT (Hot 97.7), which dominated nearby San Jose for years. Santa Clara County (containing San Jose) makes up 40% of the San Francisco diary return. "It's important for us to do well in an area where Hot 97.7 used to dominate," she says.

Capitalizing on strong South Bay name recognition, KMEL hired former Hot 97.7 personalities Lisa Foxx and Victor Zaragoza as two-thirds of the new "KMEL Breakfast Club," replacing John London. The show is anchored by Sway, former host of the nightly rap

ALL THE ELEMENTS FOR SUCCESS.

*The Earth,
The Sun, The Rain*



COLOR ME-BADD

“WKTU is in love with this!”
Frankie Blue and Jeff Z., WKTU

“A perfect pop record with
a killer hook.”
John Cline, B-94

“I think this song will
be a huge hit.”
Michelle Santosuosso, KMEL

“Could be the wedding
song of the year!”
Dan Bowen, WNCI

“Can’t wait to put it in
rotation.”
Bob Case and Mike Tierney, KUBE

From The Album

Now & Forever

Produced and Arranged by Narada Michael Walden for Perfection Light Productions
Executive Producers: Royal Bayyan for Spook Production, Inc. and Jeff Alkrich

MANAGEMENT
STYLING

World Radio History

SERVICES

HELP WANTED

POSITION WANTED

BULLETIN BOARD

COMEDY

I HAD NO FRIENDS in high school, so I passed the time by developing a sense of humor to amuse myself. Now, WNNX in Atlanta uses me to write copy that's unique and fun. If you could use copy like that, call for a reel of my spots, promos and sweepers. If you like them, we can do business. If not-- free tape. You can't lose. Brian Sack (404)815-4646

WSTH, a powerhouse regional radio station, has on-air positions available for mid-day, afternoons, and nights. Candidates must have passion for their work, be highly motivated, have a positive "i care" attitude, and have the desire to win. Minimum of two years on-air experience required. Rush tapes and resumes with cover letter to:

MAJOR TOM, WSTH
1236 BROADWAY
COLUMBUS, GEORGIA 31901
EOE

Programming position wanted by radio pro of 14 years. Seeks station that wants to be creative and take risks. Will relocate.

BRUCE: (415) 388-9005

Afternoon pro/ass't. to the PD, suddenly jobless! Need a new gig. Country, AC, CHR, production, remote, copywriting experience.

TONY: (616) 696-1631

HEY RECORD EXECS - Look out for Kenny Coleman.

PETE - I almost forgot - your CD is discwasher safe!

AOR/AAA/Alt soldier seeks FT duty anywhere. APD/MD and top 60 exp'd, reliable, solid air/production/phones. \$\$ unimportant.

JAY: (301) 359-9382

Broadcasting school graduate seeking employment in on-air news, traffic, or weather. You name it ... I can do it!

RON: (405) 399-3755

CW - Where are you? Word has it you've been roaming the airport in Pittsburgh. Or is it Buffalo? Send a postcard and let us know if we should hold your job. Concerned Friend

VOICEOVERS

KMEL JAMS

106.1 FM

San Francisco's Number One Music Station has a rare opportunity open for **MORNING SHOW PRODUCER**. We are looking for top-notch talent that has excellent major-market production, comedy, planning, and organization skills. If you are a cutting-edge thinker, a hard worker, a team player and have a positive attitude, send T&R's to:

MICHELLE S.
KMEL
55 FRANCISCO STREET
SAN FRANCISCO, CA 94133

Number one in the market! Works cheap! Sports talk host looking to kick some butt for you.

Call: (315) 673-0125

Energetic 20-year pro with superb production. Former PD/consultant with proven ratings and strong organizational skills.

JACK: (410) 219-9030



Download Billboard Online software and user guide from our promotional web site. Contact us for your ID and password at a one time charge of only \$29.

On the web at:

<http://www.billboard-online.com>

or call for more information

1-800-449-1402/212-536-1402

1515 Broadway NY, NY 10036

GLEN B. MORGAN
PROMOS, ID'S & LINERS
Call NOW for FREE Demo
(412) 449-9777

SUPER SWEEPERS *Mike Carta*
LINERS • PROMOS • ID'S
512-218-0878

Northeast country PD's! Experienced AT just moved to NY from Texas! Seeks FT on-air, small-med. market. NY/PA/CT/NJ o.k.?

KEVIN: (716) 894-8605

MORNINGS/OM/PD
"Quick, funny ... the best people manager" KVST, KILT, KRBE Houston. Ratings, comedy, talk, news, sales. Strong Prod; All offers welcome.
MIKE SHILOH (713) 537-6901

Salesman with management experience seeks small market opportunity. Sales promotions, packages, high school sports, local news sponsorships, copy and production my forte! South or southwest preferred.

Dick at 1-817-692-4116

POSITION WANTED

MIKE GREEN
Production Director
KSEG, Sacramento; KROY, Sacramento; KOXR, Kansas City; KSFM, Sacramento; Hear my Demo NOW at (916) 641-6241 or at <http://pages.prodigy.com/mgreen> or call (916) 921-1471

Station sold. Energetic sports host seeks change. Opinionated, obnoxious? You bet. Killer numbers. Just ask.

ROCCO: (954) 430-7685

You get what you pay for

Sean Caldwell PRODUCTIONS
New Country KISS-FM
Street 96 KRFI 9-96
KPM108 WKFR Coast
Country CHR Rock Hot AC
voice-over • production effects
(813) 926-1250

DAVID CHRISTIAN
Voice Trax
PROMOS-LINERS
TRY D.C. FOR FREE 612-351-7727

Jim's Back! He's already taken the Midwest and South. Where will he hit next? You decide!

JIM: (312) 866-2135

VETERAN SPORTSCASTER/PBP MAN AVAILABLE.

MIKE:
(910) 835-4996

AIRPLAY MONITOR CLASSIFIED
CALL OR FAX
LAURA RIVCHUN
PH: (212) 536-5058
FAX: (212) 536-5055

CLASSIFIED ADVERTISING RATES

HELP WANTED:

1 WEEK \$75.00 per inch
2 WEEKS \$65.00 per inch

POSITION WANTED AND BULLETIN BOARD:
\$45.00 per inch

BOX NUMBER: Add \$20.00

SERVICES:

1 WEEK \$75.00 per inch
6 WEEKS \$65.00 per inch
13 WEEKS \$60.00 per inch
26 WEEKS \$55.00 per inch
51 WEEKS \$50.00 per inch

DEADLINE (ALL CLASSIFIED):

Each Wednesday 3pm EST, 9 day leadtime.

• Classified ads are non-commissionable •

SUBMIT ALL AD COPY TO:

Laura Rivchun
Airplay Monitor Classified
1515 Broadway
New York, NY 10036

Phone: 212-536-5058
Fax: 212-536-5055

AIRPLAY Monitor [®] **GREATEST GAINERS**™

Broadcast Data Systems

Strongest Increase In Airplay This Week

MAINSTREAM

INCREASE
IN PLAYS

CELINE DION • <i>Because You Loved Me</i> (550 MUSIC)	+832
KZZU +33, WNVZ +29, KHOM +28, WPXY +25, WHOT +24, KBFM +23, WKSE +23, WXIS +21, KJYO +21, WAPE +20	
TINA ARENA • <i>Chains</i> (EPIC)	+478
KHTO +21, KRQQ +20, WFHN +18, WMXQ +17, WNVZ +17, WVKS +15, WNOK +15, KQKQ +14, WFLY +14, WKSE +14	
ALANIS MORISSETTE • <i>Ironic</i> (MAVERICK/REPRISE)	+441
WNVZ +32, WFHN +26, WGTZ +23, WNCI +22, WLAN +21, KHTO +20, WXKB +20, WDJX +17, WNTQ +16, WKSS +15	
MARIAH CAREY • <i>Always Be My Baby</i> (COLUMBIA)	+412
WZPL +25, WDJX +19, KHTO +18, WRVW +18, KALC +15, WGTZ +14, WMXQ +14, KBFM +13, WHOT +13, KJYO +13	
"WEIRD AL" YANKOVIC • <i>Amish Paradise</i> (ROCK 'N' ROLL/SCOTTI BROS./ALL AMERICAN)	+408
WLAN +32, WNCI +23, WBZZ +21, WTWR +20, WZNY +19, WSNX +18, WYCR +17, WJXX +16, KQKQ +15, WFLY +15	
TRACY CHAPMAN • <i>Give Me One Reason</i> (ELEKTRA/EEG)	+220
KALC +38, WDCG +25, WYCR +14, WDJX +10, WNNK +9, WMXQ +9, KWMX +9, WZNY +8, WZJM +8, WXIS +7	
LIONEL RICHIE • <i>Don't Wanna Lose You</i> (MERCURY)	+181
WRVW +17, WFHN +16, WXIS +14, WWSR +12, WKXJ +11, WWCK +11, WHYI +11, WTWR +10, KHTO +9, WVKS +9	
SMASHING PUMPKINS • <i>1979</i> (VIRGIN)	+174
KBFM +14, WRVW +13, WTIC +13, WWCK +12, WSTW +9, KUTQ +9, WKRZ +9, WPRO +9, WLAN +8, WFHN +8	
DOG'S EYE VIEW • <i>Everything Falls Apart</i> (COLUMBIA)	+159
WFLY +19, WNTQ +16, WNCI +16, KALC +13, WZST +10, WWSR +8, WZJM +8, WWST +8, WFMF +8, WXXL +8	
DEBORAH COX • <i>Who Do U Love</i> (ARISTA)	+142
WXIS +21, WZPL +19, WTWR +13, WMXQ +12, KBFM +10, KKRZ +10, WWST +7, WKSE +7, WKSS +6, WZST +5	

RHYTHM-CROSSOVER

INCREASE
IN PLAYS

CELINE DION • <i>Because You Loved Me</i> (550 MUSIC)	+292
WWKX +43, KJMZ +37, KPRR +26, KSFM +25, KLUC +24, KKSS +23, KUBE +20, KKFR +18, WJMN +16, KMEL +14	
FUGEES • <i>Killing Me Softly</i> (RUFFHOUSE/COLUMBIA)	+270
KDON +46, KPRR +32, KZFM +27, KCAQ +24, KSFM +22, WPOW +22, WWKX +20, KUBE +20, WJJS +15, KKSS +13	
SWV • <i>You're The One</i> (RCA)	+254
KBXX +31, WJMH +30, WJMN +27, WERQ +19, KMEL +18, WQHT +18, WWKX +17, KDON +16, KKFR +16, WPGC +15	
COOLIO • <i>1,2,3,4 (Sumpin' New)</i> (TOMMY BOY)	+158
WPGC +20, KKSS +15, WBBM +15, WJMN +14, KDON +13, KLUC +13, KXXX +13, KJMZ +11, WJJS +10, KBXX +7	
BUSTA RHYMES • <i>Woo-Hah!! Got You All In Check</i> (FLIPMODE/ELEKTRA/EEG)	+106
WQHT +22, KPWR +14, WJMH +13, WWKX +13, KYLD +10, WPGC +10, KMEL +7, KDON +5, KKSS +5, WHHH +2	
D'ANGELO • <i>Lady</i> (EMI)	+99
WJMN +28, WWKX +21, KCAQ +9, KMEL +8, KZHT +7, KPRR +6, KZFM +5, KKSS +5, WJMH +5, KQKS +5	
LIONEL RICHIE • <i>Don't Wanna Lose You</i> (MERCURY)	+94
KSFM +18, WHHH +17, KBOS +10, WJMH +10, WPGC +10, WWKX +8, KCAQ +5, WJJS +5, WERQ +4, WJMN +4	
SELENA • <i>I'm Getting Used To You</i> (EMI LATIN/EMI)	+73
KDON +27, KSFM +20, KJMZ +12, KTFM +8, WJJS +5, KKFR +4, KCAQ +3, KLUC +3, KBOS +2	
R. KELLY FEATURING RONALD ISLEY • <i>Down Low (Nobody Has To Know)</i> (JIVE)	+68
KMEL +29, KYLD +23, KKSS +19, KJMZ +8, KLUC +8, WPGC +8, KDON +7, KKFR +7, WPOW +6, WJMH +5	
LA BOUCHE • <i>Sweet Dreams</i> (RCA)	+67
KPRR +27, KKFR +13, KZFM +11, WJJS +11, XHTZ +7, WKTU +6, KTFM +6, WPOW +5, KGGI +2, KZHT +1	

VIDEO PLAYLISTS



	TW	LW
1 Joan Osborne, One Of Us	38	37
2 Hootie & The Blowfish, Time	37	33
3 Melissa Etheridge, I Want To Come Over	37	36
4 Mariah Carey, Always Be My Baby	33	26
5 Beatles, Real Love	33	30
6 Blues Traveler, Hook	28	19
7 Seal, Don't Cry	28	25
8 Collective Soul, The World I Know	26	25
9 Natalie Merchant, Wonder	25	26
10 Celine Dion, Because You Loved Me	21	16
11 Everything But The Girl, Missing	21	16
12 Whitney Houston, Exhale	21	29
13 Alanis Morissette, Ironic	20	11
14 Mariah Carey & Boyz II Men, One Sweet Day	19	31
15 Son Volt, Drown	17	14
16 The Tony Rich Project, Nobody Knows	16	13
17 Sting, Let Your Soul Be Your Pilot	14	8
18 Sophie B. Hawkins, Only Love	14	12
19 Seal, Kiss From A Rose	10	10
20 Gin Blossoms, Follow You Down	10	13
21 Whitney Houston & Cece Winans, Count On Me	10	11
22 Jewel, Who Will Save Your Soul	10	7
23 TLC, Waterfalls	9	9
24 Natalie Merchant, Carnival	9	9
25 Oasis, Wonderwall	9	9
26 Rod Stewart, So Far Away	9	6
27 Tracy Chapman, Give Me One Reason	9	2
28 Joan Osborne, Right Hand Man	8	5
29 Blues Traveler, Run Around	7	9
30 Sophie B. Hawkins, As I Lay Me Down	7	8
31 Deep Blue Something, Breakfast At Tiffany's	7	17
32 Enya, Anywhere Is	7	1
33 Hootie & The Blowfish, Only Wanna Be With You	6	4
34 Mary J. Blige, Not Gon' Cry	6	4
35 Mr. Mister, Kyrie	6	0
1 Alanis Morissette, Ironic	30	31
2 Smashing Pumpkins, 1979	29	36
3 Red Hot Chili Peppers, Aeroplane	28	27
4 Mariah Carey, Always Be My Baby	27	27
5 Coolio, 1, 2, 3, 4	27	30
6 Foo Fighters, Big Me	25	31
7 2Pac, California Love	23	38
8 The Tony Rich Project, Nobody Knows	20	23
9 Presidents Of The United States, Peaches	20	27
10 Everclear, Santa Monica	20	17
11 Lenny Kravitz, Can't Get You Off My Mind	19	18
12 Alice In Chains, Heaven Beside You	19	25
13 Mary J. Blige, Not Gon' Cry	18	22
14 Brandy, Sittin' Up In My Room	17	25
15 Busta Rhymes, Woo-Hah!! Got You All In Check	17	13
16 Gin Blossoms, Follow You Down	17	14
17 No Doubt, Just A Girl	16	15
18 Green Day, Brain Stew	15	17
19 Spacehog, In The Meantime	14	11
20 Dog's Eye View, Everything Falls Apart	13	15
21 Goo Goo Dolls, Naked	13	15
22 "Weird Al" Yankovic, Amish Paradise	13	0
23 Garbage, Only Happy When It Rains	12	11
24 Radiohead, High And Dry	12	8
25 The Dogg Pound, New York, New York	11	10
26 D'angelo, Lady	11	14
27 R. Kelly, Down Low	10	9
28 Tori Amos, Caught A Lite Sneeze	9	10
29 Stabbing Westward, What Do I Rave To Do?	9	3
30 3T, Anything	8	15
31 Joan Osborne, Right Hand Man	8	9
32 Immature, We Got It	8	13
33 LL Cool J, Doin It	8	0
34 Kris Kross, Tonite's Tha Night	7	10
35 The Afghan Whigs, Honky's Ladder	7	5
36 Adam Sandler, Steve Polychronopolous	7	9
37 La Bouche, Be My Lover	7	6
38 Kiss, Rock And Roll All Nite	7	4
39 Stone Temple Pilots, Interstate Love Song	7	6
40 Whitney Houston & Cece Winans, Count On Me	6	7
41 Smashing Pumpkins, Bullet With Butterfly	6	1
42 Cypress Hill, Illusions	6	5
43 Collective Soul, The World I Knew	5	6
44 Ozzie Osbourne, See You On The Other Side	5	5
45 Fugees, Fu-Gee-La	5	3
46 Junior M.A.F.I.A., Get Money	5	5
47 Melissa Etheridge, I Want To Come Over	5	8
48 Ruby, Tiny Meat	5	4
49 Live, Lightning Crashes	5	4
50 Bush, Glycerine	5	5

ADULT CONTEMPORARY

INCREASE
IN PLAYS

LIONEL RICHIE • <i>Don't Wanna Lose You</i> (MERCURY)	+167
WMJQ +19, KGBY +15, WRVW +14, WJDX +13, WMAG +13, WSLQ +13, KISC +12, WBEB +9, KMZQ +9, WDEF +8	
CELINE DION • <i>Because You Loved Me</i> (550 MUSIC)	+126
WJDX +15, WAHR +13, WARM +13, WLAC +11, WMGS +10, KIOI +10, KBIG +9, KISC +8, KMZQ +8, WDEF +5	
MARIAH CAREY • <i>Always Be My Baby</i> (COLUMBIA)	+116
WJDX +19, KIOI +18, WALK +15, KESZ +10, WLTE +8, WMJQ +7, WEBR +6, WMGS +5, KISC +4, WGSY +4	
WHITNEY HOUSTON & CECE WINANS • <i>Count On Me</i> (ARISTA)	+81
WLIF +12, WLHT +10, KISC +8, KVUU +6, KGBY +6, WLTE +6, WDEF +5, WASH +5, WLAC +5, WMJQ +5	
TINA ARENA • <i>Chains</i> (EPIC)	+60
WMJQ +23, WRVW +16, KURB +14, WTFM +3, WLTE +3, KIOI +2, WBEB +1	

ADULT TOP 40

INCREASE
IN PLAYS

CELINE DION • <i>Because You Loved Me</i> (550 MUSIC)	+268
KISN +24, KKOB +22, WAEV +20, KHMV +19, WIVY +15, WEZF +13, WMXV +13, WCSO +12, WMTX +12, KDMX +11	
ALANIS MORISSETTE • <i>Ironic</i> (MAVERICK/REPRISE)	+130
WQLH +21, KSTP +15, KHMV +15, WBLI +13, WWSN +11, KSTZ +10, WKDD +8, WKZL +8, KPLZ +8, KKOB +7	
MARIAH CAREY • <i>Always Be My Baby</i> (COLUMBIA)	+128
WRQX +15, WAEV +14, KTHT +14, KYKY +14, WIVY +11, WQLH +9, WMXB +8, WMYI +8, WYXR +7, WKDD +7	
TINA ARENA • <i>Chains</i> (EPIC)	+95
WMXL +15, KYKY +15, WQLH +13, WKDD +12, KKLQ +12, WZPK +10, WMXB +7, WKQI +6, WMC +6, WMYI +3	
BODEANS • <i>Closer To Free</i> (SLASH/REPRISE)	+90
WMXL +17, WWMX +17, KSTP +15, WKDD +13, KKOB +12, KYSR +8, KHMV +6, WZPK +5, WMTX +5, WBLI +5	



garbage

"Only Happy When It Rains"

the new single and video from the self-titled debut album
Recorded by Garbage at Smart Studios, Madison, Wisconsin Management: BOB Management • <http://www.garbage.com/alm>

Early Airplay At:

Z100/New York	21x
KRBE/Houston	20x
WPST/Philadelphia	37x
KHTY/Santa Barbara	24x



BUZZ CLIP/
Stress

MAINSTREAM

POWER PLAYLISTS

For Week Ending March 17, 1996



Radio
Broadcast Data Systems
Playlists supplied by Broadcast Data Systems' Radio
Track service. Stations selected from panel of leading
broadcasters in 125 radio markets, electronically
monitored 24 hours a day, 7 days a week. Songs
ranked by number of plays in monitored week.

Z100		KIIS		Q102		KISS 108		KISS 106.1		KRBE					
PD: Tom Poleman		PD: Steve Perrin		OM: Dave Allan		PD: John Ivey		PD: John Cook		APD: Scott Sparks					
New York		Los Angeles		Philadelphia		Boston		Dallas		Houston					
APD/MD: Tracy Austin		APD/MD: Tracy Austin		PD: Glenn Kalina		MD: Tad Bonvie		APD/MD: Mr. Ed Lambert		MD: Paul "Cubby" Bryant					
TW LW		TW LW		TW LW		TW LW		TW LW		TW LW					
1	Alanis Morissette, Ironic	55	55	1	The Tony Rich Project, Nobody Knows	79	71	1	La Bouche, Be My Lover	63	58	1	Folk Implosion, Natural One	54	51
2	Everything But The Girl, Missing	58	62	2	Everything But The Girl, Missing	69	74	2	Alanis Morissette, Ironic	54	53	2	Alanis Morissette, Head Over Feet	52	35
3	Dave Matthews Band, Satellite	56	54	3	3T, Anything	64	63	3	Deep Blue Something, Breakfast At Tiffan	52	58	3	Green Day, Brain Stew	52	48
4	Bodeans, Closer To Free	57	55	4	Lina Santiago, Feels So Good	56	55	4	Joan Osborne, One Of Us	51	52	4	Natalie Merchant, Wonder	43	26
5	Bush, Come Down	57	45	5	LL Cool J, Hey Lover	54	62	5	Hootie & The Blowfish, Time	47	46	5	Oasis, Wonderwall	41	33
6	Oasis, Wonderwall	50	39	6	La Bouche, Be My Lover	50	58	6	Everything But The Girl, Missing	47	41	6	Go Go Dolls, Naked	34	43
7	Gin Blossoms, Follow You Down	49	49	7	Mariah Carey, Always Be My Baby	49	46	7	La Bouche, Be My Lover	47	41	7	Gin Blossoms, Follow You Down	30	36
8	Smashing Pumpkins, 1979	49	46	8	Mariah Carey & Boyz II Men, One Sweet Day	47	58	8	Alanis Morissette, Hand In My Pocket	42	47	8	Bush, Glycerine	29	26
9	Bush, Glycerine	44	55	9	Joan Osborne, One Of Us	45	46	9	Natalie Merchant, Carnival	42	42	9	Spacehog, In The Meantime	28	33
10	Natalie Merchant, Wonder	37	36	10	Sophie B. Hawkins, As I Lay Me Down	44	42	10	Blues Traveler, Hook	41	33	10	Smashing Pumpkins, 1979	26	29
11	Presidents Of The United States, Peaches	37	34	11	Groove Theory, Tell Me	39	42	11	Sophie B. Hawkins, As I Lay Me Down	37	53	11	Bodeans, Closer To Free	26	34
12	Better Than Ezra, In The Blood	34	24	12	Whitney Houston, Exhale	37	39	12	Max-A-Million, Let's Get It	36	24	12	Nickelback, Hero	25	23
13	Live, All Over You	33	25	13	2Pac, California Love	29	31	13	Edwyn Collins, A Girl Like You	31	30	13	Jewel, Who Will Save Your Soul	25	20
14	Go Go Dolls, Name	32	19	14	Alanis Morissette, Ironic	32	31	14	Natalie Merchant, Wonder	28	11	14	Foo Fighters, Big Me	25	25
15	Seven Mary Three, Cumbersome	27	28	15	Planet Soul, Set U Free	31	48	15	Gin Blossoms, Til I Hear It From You	28	28	15	Tori Amos, Caught A Lite Sneeze	25	25
16	Spacehog, In The Meantime	27	19	16	Selena, Dreaming Of You	27	31	16	The Tony Rich Project, Nobody Knows	27	21	16	Voices Of The Beehive, Scary Kisses	24	27
17	Blues Traveler, Hook	27	23	17	Brandy, Sittin' Up In My Room	27	32	17	Lisa Loeb & Nine Stories, Do You Sleep?	26	35	17	Oasis, Champagne Supernova	23	22
18	Pearl Jam, Corduroy	25	30	18	Take That, Back For Good	25	24	18	Collective Soul, The World I Know	25	16	18	Jars Of Clay, Flood	23	22
19	Go Go Dolls, Naked	25	21	19	Fun Factory, I Wanna B With U	24	10	19	Collective Soul, December	22	37	19	Dishwalla, Counting Back Cars	21	11
20	Foo Fighters, Big Me	25	20	20	Real McCoy, Another Night	23	18	20	Mariah Carey, Always Be My Baby	22	20	20	Everclear, Santa Monica	21	25
21	No Doubt, Just A Girl	23	26	21	Whistle, A Chance For Our Love	22	23	21	Whitney Houston, Exhale	22	19	21	Seven Mary Three, Cumbersome	21	26
22	Hootie & The Blowfish, Time	22	22	22	Mariah Carey, Fantasy	21	22	22	Hootie & The Blowfish, Only Wanna Be Wit	21	26	22	Erykah Badu, Anywhere Is	20	24
23	Garbage, Only Happy When It Rains	21	21	23	TLC, Waterfalls	21	31	23	Bodeans, Closer To Free	20	20	23	Mary Jane, Twenty One	20	8
24	Collective Soul, The World I Know	21	20	24	Ini Kamara, Here Comes The Hotstepper	20	22	24	Coolio Feat. L.V., Gangsta's Paradise	20	22	24	Garbage, Only Happy When It Rains	20	12
25	Better Than Ezra, Peppers	20	14	25	Celine Dion, Because You Loved Me	19	19	25	Alanis Morissette, Hand In My Pocket	18	20	25	Alanis Morissette, Ironic	18	15
26	Red Hot Chili Peppers, Aeroplane	19	17	26	Nicki French, Total Eclipse Of The	19	11	26	2Pac, California Love	18	16	26	Dave Matthews Band, Satellite	18	18
27	La Bouche, Be My Lover	19	17	27	L.A.D., Rodin' Low	19	21	27	Montell Jordan, This Is How We Do It	15	14	27	Joan Osborne, St. Teresa	17	14
28	Ruby, Tm Me	18	17	28	Go Go Dolls, Name	18	19	28	Diana King, Shy Guy	15	14	28	Lisa Loeb & Nine Stories, Taffy	17	20
29	Stabbing Westward, What Do I Have To Do?	18	18	29	Coolio Feat. L.V., Gangsta's Paradise	18	19	29	Diana King, Shy Guy	14	12	29	Everything But The Girl, Missing	16	11
30	Dog's Eye View, Everything Falls Apart	17	11	30	Mary J. Blige, Not Gon' Cry	17	12	30	Whitney Houston, Exhale	14	14	30	Dog's Eye View, Everything Falls Apart	15	12
31	Green Day, Brain Stew	16	12	31	Seal, Kiss From A Rose	16	19	31	TLC, Waterfalls	14	17	31	Natalie Merchant, Jealousy	13	9
32	Teddy Pendergrass, Kingdom	15	17	32	Jon B., Pretty Girl	16	18	32	Pearl Jam, Better Man	14	13	32	No Doubt, Just A Girl	13	20
33	Everclear, Santa Monica	15	13	33	L.V., Throw Your Hands Up	15	12	33	Monica, Before You Walk Out Of My Life	14	14	33	Ammonia, Drugs	13	23
34	Sponge, Molly	14	13	34	Montell Jordan, This Is How We Do It	14	20	34	Blaid Melton, No Rain	13	12	34	Planet Soul, Set U Free	13	12
35	Joan Osborne, One Of Us	14	13	35	The Cranberries, Dreams	13	20	35	Max-A-Million, Let's Get It	13	15	35	Edwin McCain, Solitude	12	6
36	Stone Temple Pilots, Big Bang Baby	13	14	36	Crystal Waters, 100% Pure Love	12	12	36	Brandy, Sittin' Up In My Room	12	16	36	Babylooz, Zoo Spaceman	12	9
37	Pearl Jam, Better Man	13	8	37	2 Unlimited, Get Ready For This	12	13	37	Deborah Cox, Who Do U Love	14	14	37	Stoney Tumble Pilots, Big Bang Baby	12	17
38	Melissa Etheridge, I Want To Come Over	11	13	38	Denine, All Cried Out	12	0	38	Mariah Carey, Fantasy	13	14	38	Stone Temple Pilots, Interstates Love Song	11	7
39	Seal, Don't Cry	10	12	39	Deee-Lite, Groove Is In The Heart	11	9	39	KT, Move It Like This	13	17	39	The Cranberries, Dreams	11	13
40	Oasis, Champagne Supernova	9	5	40	New Order, Bizarre Love Triangle	10	12	40	Nicki French, Total Eclipse Of The	13	8	40	Bush, Come Down	11	8

Tina Arena

DEBUT (38)
TOP 40/MAINSTREAM

HOT SHOT DEBUT
(37)
ADULT TOP 40

Already over 1000 spins
& audience over 8 million!

Over 145 stations out of the box including:

WXKS	WIOQ	WSTR	KHKS	PWR96	Y100
KDWB	WKBQ	WFLZ	WBEB	WNCI	WMXV
Q102	K101	WZJM	WPNT	WLTE	Z90
Q106	KYKY	KKRZ	WZPL	WKQI	KUBE
WNVZ	WEDJ	KISN	KZHT	WWKX	WGTZ
WAPE	WPXY	WKSE	WMJQ	KRO	WXXL

AND MANY MORE!

Chains

The worldwide hit from a dazzling new star.

Discover what the rest
of the world already has.

Written by Tina Arena, Steve Werfel
and Pam Reswick.

Produced by David Tyson.
Management: Ralph Carr for RCM International

<http://www.tinaarena.com>



World Radio History

MAINSTREAM

POWER PLAYLISTS

For Week Ending March 17, 1996



Playlists supplied by Broadcast Data Systems' Radio Track service. Stations selected from panel of leading broadcasters in 125 radio markets, electronically monitored 24 hours a day, 7 days a week. Songs ranked by number of plays in monitored week.

Table for G105 station WDCG Raleigh, PD: Brian Burns, MD: Kip Taylor. Top 40 playlist including songs like 'Gin Blossoms, Follow You Down' and 'Smashing Pumpkins, 1979'.

Table for Z100 station KKRZ Portland, PD: Ken Benson, APD/MD: Chet Buchanan. Top 40 playlist including songs like 'The Tony Rich Project, Nobody Knows' and 'Goo Goo Dolls, Name'.

Table for ALICE 106 station KALC Denver, PD: Greg Cassidy, MD: Jim Lawson. Top 40 playlist including songs like 'Collective Soul, The World I Know' and 'Alanis Morissette, Ironic'.

Table for THE RIVER station WRVW Nashville, PD: Charlie Quim, APD: Tom Pearce, MD: Jim McDonald. Top 40 playlist including songs like 'Natalie Merchant, Wonder' and 'Goo Goo Dolls, Name'.

Table for JAMMIN' 92 station WZJM Cleveland, PD: Lisa Rodman, MD: Dave Eubanks. Top 40 playlist including songs like 'Alanis Morissette, Ironic' and 'Everything But The Girl, Missing'.

Table for XL106.7 station WXXL Orlando, PD/MD: Adam Cook, APD: Pete deGraaf. Top 40 playlist including songs like 'The Tony Rich Project, Nobody Knows' and 'Mariah Carey, Always Be My Baby'.

Table for KJ103 station KYJO Oklahoma City, PD: Mike McCoy, MD: Joe Friday. Top 40 playlist including songs like 'La Bouche, Be My Lover' and 'Alanis Morissette, Ironic'.

Table for KISS 98.5 station WKSE Buffalo, PD: Sue O'Neil, MD: Dave Universal. Top 40 playlist including songs like 'Blues Traveler, Hook' and 'Joan Osborne, One Of Us'.

Table for WZPL station WZPL Indianapolis, PD: Tom Gjerdum, MD: Rob Blair. Top 40 playlist including songs like '3T, Anything' and 'The Tony Rich Project, Nobody Knows'.

Table for THE EDGE station WEDJ Charlotte, PD: Brian Bridgman, MC: Marcie Crescente. Top 40 playlist including songs like 'Alanis Morissette, Ironic' and 'Joan Osborne, One Of Us'.

Table for Z93 station WGTZ Dayton, PD: Louis Kaplan, MD: Gretchen Corbett. Top 40 playlist including songs like 'Everything But The Girl, Missing' and 'Oasis, Wonderwall'.

Table for FLY 92 station WFLY Albany, PD/MD: Mike Morgan. Top 40 playlist including songs like 'La Bouche, Be My Lover' and 'Everything But The Girl, Missing'.

Table for Z104 station WNVZ Norfolk, PD: Don London, MD: Sean Sellers. Top 40 playlist including songs like 'Planet Soul, Set U Free' and 'The Tony Rich Project, Nobody Knows'.

Table for MIX 93.3 station KMKV Kansas City, PD/MD: Jon Zellner. Top 40 playlist including songs like 'Goo Goo Dolls, Name' and 'Hootie & The Blowfish, Time'.

Table for MIX 107.5 station KWMX Denver, PD: John Peake, MD: Lee Cagle, APD: Steve Douglas. Top 40 playlist including songs like 'Hootie & The Blowfish, Time' and 'Goo Goo Dolls, Name'.

Table for WIXX station WIXX Green Bay, PD: Dan Stone, MD: David Burns. Top 40 playlist including songs like 'Alanis Morissette, Ironic' and 'Collective Soul, The World I Know'.

Table for WKRZ station WKRZ Wilkes-Barre, PD: Ken Medek, MD: Jerry Padden. Top 40 playlist including songs like 'Bodeans, Closer To Free' and 'Hootie & The Blowfish, I Go Blind'.

Table for WVKs station WVKs Toledo, PD: Mike Wheeler, MD: Curt Kruse. Top 40 playlist including songs like 'Alanis Morissette, Ironic' and 'La Bouche, Be My Lover'.



★ ★ ★ **AIRPOWER** ★ ★ ★
(Minimum 1500 detections for the first time)

Total Plays/Gain

CELINE DION 2121/832
Because You Loved Me (550 Music)
Total Stations: 77/Chart Move: 25-16
Heavy (40+ plays): 13 KBFM, KHOM, KHOT, KHST, KQKQ, WAPE, WFLZ, WHYI, WNCI, WPXY, WRVW, WXLK, WZNY
Medium (20-39): 40 KALC, KDWB, KHFI, KHKS, KJYO, KKRZ, KLRZ, KRQQ, KZZU, WABB, WDJX, WEDJ, WFHN, WHHY, WHOT, WIXX, WKCI, WKRO, WKRZ, WKSE, WKXJ, WLAN, WMXQ, WNNK, WNOK, WNTQ, WNVZ, WSSX, WSTW, WVIC, WTVR, WVKX, WWSR, WWCK, WXIS, WXXB, WXXL, WZJM, WZPL, WZST
Light (Under 20): 24
New Airplay This Week: 12 KIIS, KKMKG, KZZU, WBZZ, WIOQ, WKSE, WKSS, WNVZ, WPRO, WRVQ, WXXS, WXXX

MOST NEW AIRPLAY THIS WEEK *No. Of Stations*

TINA ARENA 30
Chains (Epic)

"WEIRD AL" YANKOVIC 20
Amish Paradise (Rock 'N' Roll/Scotti Bros./All American)

LIONEL RICHIE 15
Don't Wanna Lose You (Mercury)

CELINE DION 12
Because You Loved Me (550 Music)

COOLIO 10
1,2,3,4 (Sumpin' New) (Tommy Boy)

Medium (20-39): 5 KRQQ, WFHN, WHYI, WTVR, WZJM
Light (Under 20): 14
New Airplay This Week: 2 KBFM, WFHN

FOO FIGHTERS 197/56
Big Me (Roswell/Capitol)
Total Stations: 30
Heavy (40+): 0
Medium (20-39): 5 KHTY, KRBE, WHTZ, WPST, WXIS
Light (Under 20): 25
New Airplay This Week: 3 WBHT, WYCR, WZST

BASS IS BASE 191/33
I Cry (Loose Cannon/Island)
Total Stations: 25
Heavy (40+): 0
Medium (20-39): 3 KLRZ, WFHN, WRVW
Light (Under 20): 22
New Airplay This Week: 7 KHOM, KJYO, KKRD, WDDJ, WEDJ, WSNX, WWST

AIRPOWER BOUND

Total Plays/Gain

THE PRESIDENTS OF THE UNITED STATES OF AMERICA 1329/71
Peaches (Columbia)
Total Stations: 79/Chart Move: 27-23
Heavy (40+ plays): 3 KHOM, WHOT, WPST
Medium (20-39): 30 KDWB, KHTY, KJYO, KKMKG, KKRD, KKRZ, KLRZ, KQKQ, WABB, WBHT, WBZZ, WDCG, WFBC, WGTZ, WHHY, WHTZ, WKBQ, WKRO, WKXJ, WSNX, WSSX, WTVR, WWSR, WWCK, WXIS, WXXL, WXXX, WZNY, WZPL, WZST
Light (Under 20): 46
New Airplay This Week: 1 WZYP

2PAC (FEAT. DR. DRE & ROGER TROUTMAN) 752/50
California Love (Death Row/Interscope)
Total Stations: 70/Chart Move: 37-34
Heavy (40+): 1 KZZU
Medium (20-39): 18 KBFM, KDWB, KHFI, KHOM, KIIS, KJYO, KKRZ, KQKQ, WBHT, WFHN, WFLY, WFLZ, WGTZ, WKSE, WWST, WXIS, WXXB, WZPL
Light (Under 20): 51
New Airplay This Week: 1 KHOM

GOO GOO DOLLS 529/101
Naked (Metal Blade/Warner Bros.)
Total Stations: 55
Heavy (40+): 1 KUTQ
Medium (20-39): 8 KHTY, KLRZ, KRBE, WHTZ, WKSE, WPST, WWST, WXIS
Light (Under 20): 46
New Airplay This Week: 5 WFBC, WKBQ, WSSX, WXXS, WZYP

RADIOHEAD 312/31
High And Dry (Capitol)
Total Stations: 25
Heavy (40+): 0
Medium (20-39): 5 KHTY, KUTQ, WBHT, WPST, WWCK
Light (Under 20): 20
New Airplay This Week: 1 KJYO

GARBAGE 190/47
Only Happy When It Rains (Aimo Sounds/Geffen)
Total Stations: 22
Heavy (40+): 0
Medium (20-39): 5 KHTY, KLRZ, KRBE, WHTZ, WPST
Light (Under 20): 17
New Airplay This Week: 2 KLRZ, WXXJ

DOG'S EYE VIEW 1140/159
Everything Falls Apart (Columbia)
Total Stations: 70/Chart Move: 31-25
Heavy (40+): 0
Medium (20-39): 22 KALC, KLRZ, KUTQ, WDCG, WDDJ, WEDJ, WFLY, WIXX, WKBQ, WKCI, WKXJ, WNNK, WNOK, WPST, WSTR, WTVR, WVKX, WXIS, WXLK, WYCR, WZJM, WZST
Light (Under 20): 48
New Airplay This Week: 3 WFMF, WNCI, WNTQ

NO DOUBT 733/44
Just A Girl (Trauma/Interscope)
Total Stations: 46/Chart Move: 38-36
Heavy (40+): 2 WPST, WXIS
Medium (20-39): 12 KHTY, KJYO, KLRZ, KUTQ, WDCG, WFHN, WHTZ, WKBQ, WKXJ, WWCK, WXXX, WZST
Light (Under 20): 32

SPACEHOG 522/7
In The Meantime (HiFi/Sire/EEG)
Total Stations: 48
Heavy (40+): 1 KUTQ
Medium (20-39): 8 KRBE, WBHT, WDDJ, WHTZ, WXXJ, WPST, WWCK, WXIS
Light (Under 20): 39
New Airplay This Week: 4 WHHY, WMXQ, WNNK, WPRO

COOLIO 288/119
1,2,3,4 (Sumpin' New) (Tommy Boy)
Total Stations: 34
Heavy (40+): 1 KZZU
Medium (20-39): 1 WXIS
Light (Under 20): 32
New Airplay This Week: 10 KIIS, KKRD, KRQQ, WFLZ, WGTZ, WNOK, WPXY, WWSR, WWST, WZPL

★ LA BOUCHE 178/91
Sweet Dreams (RCA)
Total Stations: 43
Heavy (40+): 0
Medium (20-39): 3 WIOQ, WKSE, WPXY
Light (Under 20): 40
New Airplay This Week: 5 KBFM, KKMKG, KKRZ, WFHN, WFLY

DEBORAH COX 942/142
Who Do U Love (Arista)
Total Stations: 74/Chart Move: 34-30
Heavy (40+): 4 KBFM, KHOT, WFHN, WXIS
Medium (20-39): 13 KDWB, KKMKG, KKRZ, KLRZ, WFLY, WKRO, WKSS, WNNK, WNVZ, WSSX, WTVR, WWCK, WYCR
Light (Under 20): 57
New Airplay This Week: 3 WKSE, WMXQ, WZPL

TINA ARENA 723/478
Chains (Epic)
Total Stations: 64/Chart Move: Debut 38
Heavy (40+): 0
Medium (20-39): 10 KHOT, KRQQ, WFHN, WKRO, WPXY, WSTR, WSTW, WXIS, WZNY, WZPL
Light (Under 20): 54
New Airplay This Week: 30 KHOT, KKRD, KKRZ, KLRZ, KQKQ, KRQQ, WAPE, WDDJ, WFLY, WFLZ, WHHY, WHOT, WIOQ, WKBQ, WKSE, WKXJ, WLAN, WMXQ, WNCI, WNOK, WNVZ, WTVR, WVKX, WWST, WXXB, WXXS, WXXX, WYCR, WZJM, WZYP

EVERCLEAR 505/21
Santa Monica (Watch The World Die) (Tim Kerr/Capitol)
Total Stations: 37
Heavy (40+): 3 KHTY, KUTQ, WDDJ
Medium (20-39): 4 KRBE, WKRO, WPST, WXIS
Light (Under 20): 30

EDWIN MCCAIN 272/8
Sorry To A Friend (Lava/Atlantic)
Total Stations: 23
Heavy (40+): 0
Medium (20-39): 4 KLRZ, WFBC, WKRZ, WNOK
Light (Under 20): 19
New Airplay This Week: 2 KWMX, WWST

STONE TEMPLE PILOTS 171/31
Big Bang Baby (Atlantic)
Total Stations: 26
Heavy (40+): 0
Medium (20-39): 3 KHTY, KLRZ, WXIS
Light (Under 20): 23
New Airplay This Week: 2 KUTQ, WZST

JANN ARDEN 812/82
Insensitive (A&M)
Total Stations: 49/Chart Move: 36-32
Heavy (40+): 2 KHOT, WSSX
Medium (20-39): 15 KALC, KLRZ, WABB, WDDJ, WHYI, WKRZ, WKXJ, WMXQ, WPRO, WVIC, WTVR, WXXB, WYCR, WZJM, WZST
Light (Under 20): 32
New Airplay This Week: 3 WAPE, WFBC, WSNX

MARY J. BLIGE 677/29
Not Gon' Cry (Arista)
Total Stations: 58/Chart Move: 40-40
Heavy (40+): 5 KHFI, KHOM, KZZU, WNVZ, WRVQ
Medium (20-39): 12 KBFM, KHOT, KJYO, KLRZ, WFHN, WFLY, WGTZ, WHOT, WKSE, WVKX, WWSR, WZJM
Light (Under 20): 41
New Airplay This Week: 1 WFLZ

★ "WEIRD AL" YANKOVIC 469/408
Amish Paradise (Rock 'N' Roll/Scotti Bros./All American)
Total Stations: 49
Heavy (40+): 0
Medium (20-39): 8 WBZZ, WGTZ, WHOT, WLAN, WNCI, WNNK, WTVR, WZNY
Light (Under 20): 41
New Airplay This Week: 20 KJYO, KKRD, KQKQ, WBZZ, WFLY, WIXX, WKBQ, WLAN, WNCI, WNOK, WPXY, WSNX, WSTW, WWSR, WWCK, WXXL, WYCR, WZJM, WZST, WZYP

LENNY KRAVITZ 246/49
Can't Get You Off My Mind (Virgin)
Total Stations: 26
Heavy (40+): 0
Medium (20-39): 4 KHOT, KLRZ, WKXJ, WXIS
Light (Under 20): 22
New Airplay This Week: 4 WGTZ, WWCK, WWST, WXLK

★ THE BOTTLE ROCKETS 139/48
I'll Be Comin' Around (ESD/TAG/Atlantic)
Total Stations: 17
Heavy (40+): 1 KLRZ
Medium (20-39): 1 WXIS
Light (Under 20): 15
New Airplay This Week: 2 KHOM, WDDJ

TRACY CHAPMAN 764/220
Give Me One Reason (Elektra/EEG)
Total Stations: 52/Chart Move: Debut 33
Heavy (40+): 1 KLRZ
Medium (20-39): 18 KALC, WAPE, WDCG, WDDJ, WFBC, WKXJ, WMXQ, WNNK, WNOK, WRVW, WSTR, WVKX, WWCK, WXIS, WYCR, WZJM, WZNY, WZYP
Light (Under 20): 33
New Airplay This Week: 9 KALC, KMXV, KRBE, WDCG, WDJX, WGTZ, WHOT, WHTZ, WIXX

CHART BOUND

Total Plays/Gain

LINA SANTIAGO 576/72
Feels So Good (Show Me Your Love) (Groove Nation/Universal)
Total Stations: 39
Heavy (40+): 3 KBFM, KHFI, KIIS
Medium (20-39): 8 KDWB, KZZU, WFHN, WFLY, WKSE, WNVZ, WXXL, WZJM
Light (Under 20): 28
New Airplay This Week: 1 KQKQ

WHITNEY HOUSTON & CECE WINANS 396/87
Count On Me (Arista)
Total Stations: 43
Heavy (40+): 0
Medium (20-39): 6 KHOT, KQKQ, KZZU, WKXJ, WRVW, WTVR
Light (Under 20): 36
New Airplay This Week: 5 KHOM, WDJX, WIXX, WSNX, WWST

★ LIONEL RICHIE 240/181
Don't Wanna Lose You (Mercury)
Total Stations: 28
Heavy (40+): 0
Medium (20-39): 1 WRVW
Light (Under 20): 27
New Airplay This Week: 15 KBFM, KHOT, KKRD, KLRZ, WFHN, WHYI, WKXJ, WNOK, WSTW, WTVR, WVKX, WWSR, WWCK, WXIS, WXLK

TORI AMOS 137/7
Caught A Lite Sneeze (Atlantic)
Total Stations: 13
Heavy (40+): 0
Medium (20-39): 3 KRBE, KUTQ, WPST
Light (Under 20): 10
New Airplay This Week: 1 KHTY

Airpower awarded to those records which attain 1500 detections for the first time. New airplay lists: those stations registering six or more detections per week on a record for the first time. ★ Initial impact: records appearing on this page for the first time.

SONG ACTIVITY REPORTS

For Week Ending March 17, 1996



Detailed song tracking information for the last 3 weeks for all songs showing increased play this week. Total plays are gain or loss. Includes video play. Markets listed in order of population.

2PAC (FEAT. DR. DRE & R. TROUTMAN) 752/50

California Love (Death Row/Interscope)

Table with columns: Total Stations: 70, Chart Move: 37-34, and station data for various markets like New York, L.A., Philadelphia, etc.

3T 1669/60

Anything (MJJ/550 Music)

Table with columns: Total Stations: 76, Chart Move: 21-20, and station data for various markets like New York, L.A., Philadelphia, etc.

JANN ARDEN 812/82

Insensitive (A&M)

Table with columns: Total Stations: 49, Chart Move: 36-32, and station data for various markets like New York, L.A., Philadelphia, etc.

TINA ARENA 723/478

Chains (Epic)

Table with columns: Total Stations: 64, Chart Move: Debut 38, and station data for various markets like New York, L.A., Philadelphia, etc.

MARY J. BLIGE 677/29

Not Gon' Cry (Arista)

Table with columns: Total Stations: 58, Chart Move: 40-40, and station data for various markets like New York, L.A., Philadelphia, etc.

BODEANS 2181/43

Closer To Free (Slash/Reprise)

Table with columns: Total Stations: 83, Chart Move: 14-15, and station data for various markets like New York, L.A., Philadelphia, etc.

BRANDY 1955/32

Sittin' Up In My Room (Arista)

Table with columns: Total Stations: 75, Chart Move: 18-18, and station data for various markets like New York, L.A., Philadelphia, etc.

MARIAH CAREY 2403/412

Always Be My Baby (Columbia)

Table with columns: Total Stations: 79, Chart Move: 16-9, and station data for various markets like New York, L.A., Philadelphia, etc.

TRACY CHAPMAN 764/220

Give Me One Reason (Elektra/EEG)

Table with columns: Total Stations: 52, Chart Move: Debut 33, and station data for various markets like New York, L.A., Philadelphia, etc.

COLLECTIVE SOUL 2364/29

The World I Know (Atlantic)

Table with columns: Total Stations: 82, Chart Move: 13-11, and station data for various markets like New York, L.A., Philadelphia, etc.

DEBORAH COX 942/142

Who Do U Love (Arista)

Table with columns: Total Stations: 74, Chart Move: 34-30, and station data for various markets like New York, L.A., Philadelphia, etc.

CELINE DION 2121/832

Because You Loved Me (550 Music)

Table with columns: Total Stations: 77, Chart Move: 25-16, and station data for various markets like New York, L.A., Philadelphia, etc.

DOG'S EYE VIEW 1140/159

Everything Falls Apart (Columbia)

Table with columns: Total Stations: 70, Chart Move: 31-25, and station data for various markets like New York, L.A., Philadelphia, etc.

MELISSA ETHERIDGE 1954/14

I Want To Come Over (Island)

Table with columns: Total Stations: 82, Chart Move: 17-19, and station data for various markets like New York, L.A., Philadelphia, etc.

EVERCLEAR 505/21

Santa Monica (Watch The World Die) (Tim Kerr/Capitol)

Table with columns: Total Stations: 37, Chart Move: 17-19, and station data for various markets like New York, L.A., Philadelphia, etc.

SONG ACTIVITY REPORTS

For Week Ending March 17, 1996

Grid of radio charts for albums like 'Missing (Atlantic)', 'GIN BLOSSOMS', 'GOO GOO DOLLS', etc.

Grid of radio charts for singles like 'ALANIS MORISSETTE', 'NO DOUBT', 'THE PRESIDENTS OF THE UNITED STATES', etc.

Grid of radio charts for singles like 'THE TONY RICH PROJECT', 'LINA SANTIAGO', 'SMASHING PUMPKINS', etc.



POWER PLAYLISTS

For Week Ending March 17, 1996



Playlists supplied by Broadcast Data Systems' Radio Track service. Stations selected from panel of leading broadcasters in 125 radio markets, electronically monitored 24 hours a day, 7 days a week. Songs ranked by number of plays in monitored week.

Grid of 20 radio station playlists including: HOT 97, POWER 106, B96, WKTU, JAM'N 94.5, KMEL, WILD 107, WPGC, THE BOX, POWER 96, KUBE, POWER 92, FM 102, KGGI, Z90, KTFM, 92Q, KS104. Each station listing includes song titles, artists, and play counts.

RHYTHM-CROSSOVER

POWER PLAYLISTS



For Week Ending
March 17, 1996

Playlists compiled by Broadcast Data Systems Radio
Ranking service. Stations selected from general listening
area stations in 123 radio markets. Electronic
monitoring of top 40's day 7 (last) week. Songs
ranked by number of plays in monitored week.

B95		PD: Mark Adams MD: Mikey Freeman	
KBOS Fresno	TW LW		
1	Brandy, Sittin' Up In My Room	56	45
2	Mariah Carey, Always Be My Baby	55	58
3	Monica, Before You Walk Out Of My Life	52	54
4	Everything But The Girl, Missing	51	56
5	The Tony Rich Project, Nobody Knows	50	47
6	Celine Dion, Because You Loved Me	48	41
7	Groove Theory, Tell Me	46	46
8	Max-A-Million, Sexual Healing	46	53
9	Mariah Carey & Boyz II Men, One Sweet Day	44	51
10	La Bouche, Be My Lover	42	48
11	3T, Anything	42	55
12	Whitney Houston, Exhale	42	46
13	Selena, Dreaming Of You	41	47
14	Lina Santiago, Feels So Good	41	40
15	Mariah Carey, Fantasy	36	34
16	LL Cool J, Hey Lover	33	26
17	Ace Of Base, Lucky Love	31	30
18	Madonna, You'll See	30	36
19	Chantay Savage, I Will Survive	29	32
20	TLC, Waterfalls	26	29
21	Selena, I'm Getting Used To You	26	24
22	Mary J. Blige, Not Gon' Cry	26	33
23	Seal, Kiss From A Rose	25	30
24	Soul For Real, Every Little Thing I Do	24	27
25	Ivette Michelle, Everyday & Evernight	24	29
26	Real McCoy, Another Night	20	22
27	Monica, Don't Take It Personal	20	26
28	La Bouche, Sweet Dreams	19	25
29	Max-A-Million, Take Your Time	19	15
30	2Pac, California Love	19	16
31	TLC, Creep	18	22
32	Janet Jackson, Runaway	17	21
33	Coolio Feat. L.V., Gangsta's Paradise	17	18
34	Devo, Energy	16	18
35	Planet Soul, Set U Free	15	22
36	Devin, All I Need	14	19
37	Jon B. Feat. Babyface, Someone To Love	13	16
38	Jon B., Pretty Girl	13	15
39	Montell Jordan, This Is How We Do It	13	18
40	Real McCoy, Come And Get Your Love	12	18

102 JAMZ		PD: Brian Douglas MD: Horse Raney	
WJMH Greensboro	TW LW		
1	Fugees, Killing Me Softly	73	74
2	R. Kelly, Down Low	73	68
3	Mariah Carey, Always Be My Baby	68	67
4	Joe, All The Things	67	54
5	Brandy, Sittin' Up In My Room	63	53
6	Fugees, Fu-Gee-La	60	60
7	SWV, You're The One	51	21
8	2Pac, California Love	50	44
9	Mary J. Blige, Not Gon' Cry	46	47
10	Total, Kissa You	46	38
11	Lost Boyz, Renne	44	60
12	Total, No One Else	42	36
13	R. Kelly, Freak Tonight	41	62
14	LL Cool J, Hey Lover	41	32
15	LL Cool J, Don't	39	59
16	Nonchalant, 5 O'clock	34	25
17	Monica, Like This And Like That	33	28
18	D'Angelo, Lady	32	18
19	Xscape, Do You Want To	30	38
20	Groove Theory, Tell Me	27	25
21	Nile, Nasty Dancer	24	23
22	TLC, Digg'n On You	23	21
23	Shaggy Feat. Grand Paba, Why You Treat M	22	3
24	Busta Rhymes, Woo-Hah!! Got You All In C	22	9
25	Pharcyde, Drop	21	27
26	Domino, Physical Funk	20	22
27	Mariah Carey & Boyz II Men, One Sweet Day	19	21
28	Faith Evans, You Used To Love Me	19	20
29	Disco 5, The City Boyz Feat. Cl. D.-Tran	19	21
30	Tevin Campbell, Kicks Me Off Me I Feel	18	0
31	Chantay Savage, I Will Survive	18	22
32	D'Angelo, Can't Hide Love	16	0
33	M.C. Hammer, Gon' Up Yonder	16	2
34	Devo, Energy	16	16
35	Planet Soul, Set U Free	15	22
36	Riki Ross, Tonight's The Night	14	39
37	Coolio Feat. L.V., Gangsta's Paradise	15	16
38	The Notorious B.I.G., One More Chance	15	14
39	Lionel Richie, Don't Wanna Lose You	13	3
40	Luniz, I Got 5 On It	12	10

KDON		PD: Michael Newman MD: Jennifer Wilde	
KDON Monterey/Salinas	TW LW		
1	Mary J. Blige, Not Gon' Cry	72	76
2	Deborah Cox, Who Do U Love	71	65
3	Everything But The Girl, Missing	70	55
4	Diana King, Am I Nobody	69	73
5	L.V., Throw Your Hands Up	69	79
6	Mariah Carey, Always Be My Baby	66	71
7	2Pac, California Love	62	79
8	Quincy Jones, Brandy & Heavy D, Rock Wit	61	64
9	Xscape, Do You Want To	46	47
10	Fugees, Killing Me Softly	46	0
11	Silk, Don't Rush	45	40
12	R. Kelly, Down Low	45	38
13	Lina Santiago, Feels So Good	43	55
14	Selena, I'm Getting Used To You	42	15
15	Joe, All The Things	37	45
16	Jon B., Isn't It Scary	36	47
17	Devo, Energy	35	25
18	The Tony Rich Project, Nobody Knows	35	24
19	Adina Howard, Freak Like Me	25	24
20	Total, Can't You See	24	27
21	Nile, Nasty Dancer	23	22
22	Soul For Real, Every Little Thing I Do	22	20
23	Soul For Real, If You Want It	22	20
24	TLC, Digg'n On You	20	20
25	Pharcyde, Drop	20	22
26	Domino, Physical Funk	19	24
27	Mariah Carey & Boyz II Men, One Sweet Day	19	0
28	Mekano, He's Mine	19	27
29	J'son, Take A Look	18	32
30	Coolio, I.2.3.4	18	0
31	Max-A-Million, Everybody's Groovin'	17	16
32	Yvette Michelle, Everyday & Evernight	17	19
33	SWV, You're The One	16	0
34	Monica, Don't Take It Personal	16	20
35	Janet Jackson, Runaway	15	22
36	Riki Ross, Tonight's The Night	15	12
37	Coolio Feat. L.V., Gangsta's Paradise	15	16
38	Real McCoy, Another Night	13	17
39	Brandy, Sittin' Up In My Room	13	61
40	Tony Thompson, I Wanna Love Like That	12	7

POWER 102		PD: John Candelaria	
KPRR El Paso	TW LW		
1	The Tony Rich Project, Nobody Knows	61	60
2	Mariah Carey, Always Be My Baby	57	61
3	Mariah Carey & Boyz II Men, One Sweet Day	54	59
4	Mary J. Blige, Not Gon' Cry	53	56
5	La Bouche, Be My Lover	53	60
6	Everything But The Girl, Missing	52	57
7	3T, Anything	51	50
8	Brandy, Sittin' Up In My Room	44	38
9	La Bouche, Sweet Dreams	43	16
10	2Pac, California Love	41	48
11	Groove Theory, Tell Me	41	35
12	Celine Dion, Because You Loved Me	41	15
13	N-Trance, Stay'n Alive	31	52
14	LL Cool J, Hey Lover	31	34
15	Buffy, Give Me	31	28
16	Ace Of Base, Lucky Love	30	36
17	Fugees, Killing Me Softly	30	0
18	Lina Santiago, Feels So Good	31	30
19	Whitney Houston, Exhale	29	19
20	Selena, I'm Getting Used To You	29	29
21	R. Kelly, Down Low	27	27
22	Artie The 1 Man Party, A Mover La Colita	25	38
23	Planet Soul, Set U Free	24	28
24	Laura Martinez, Ritmo Latino	22	8
25	K7, Move It Like This	21	17
26	L.A.D., Ridin' Low	21	43
27	C+C Music Factory, Robi-Rob's Gonqua An	20	24
28	Shaggy, Boom-Bastic	19	22
29	Deborah Cox, Who Do U Love	18	21
30	Ruffneck Feat. Yvonne, Everybody Be Some	18	25
31	Jon B., Pretty Girl	18	18
32	LL Cool J, Don't	17	17
33	Coolio, I.2.3.4	17	18
34	Angelina, Release Me	17	18
35	Seal, Kiss From A Rose	16	19
36	Mariah Carey, Fantasy	15	19
37	Janet Jackson, Runaway	15	11
38	Frost, La Familia	15	11
39	Coolio Feat. L.V., Gangsta's Paradise	15	19
40	TLC, Waterfalls	15	14

KLUC		PD: Jerry Dean MD: Cat Thomas	
KLUC Las Vegas	TW LW		
1	2Pac, California Love	75	66
2	Mariah Carey, Always Be My Baby	67	65
3	The Tony Rich Project, Nobody Knows	66	65
4	Brandy, Sittin' Up In My Room	65	61
5	Mary J. Blige, Not Gon' Cry	63	60
6	Groove Theory, Tell Me	60	62
7	Everything But The Girl, Missing	55	63
8	Lina Santiago, Feels So Good	55	54
9	LL Cool J, Hey Lover	53	55
10	Quincy Jones, Brandy & Heavy D, Rock Wit	51	52
11	J'son, Take A Look	47	51
12	Whitney Houston, Exhale	46	42
13	Coolio, I.2.3.4	46	33
14	Selena, I'm Getting Used To You	45	42
15	R. Kelly, Down Low	44	36
16	Monica, Before You Walk Out Of My Life	43	55
17	Xscape, Who Can I Run To	41	43
18	3T, Anything	40	39
19	D'Angelo, Lady	38	36
20	Joe, All The Things	37	41
21	Silk, Don't Rush	35	1
22	Outrageous Brothers, Boom Boom Boom	30	44
23	Alanis Morissette, Ironic	25	22
24	Naughty By Nature, Feel Me Flow	25	23
25	Celine Dion, Because You Loved Me	24	0
26	Tony Thompson, I Wanna Love Like That	24	24
27	Frost, La Familia	24	25
28	Mariah Carey, Fantasy	23	26
29	Raphael Saadiq, Ask Of You	20	30
30	Max-A-Million, Sexual Healing	20	34
31	Planet Soul, Set U Free	18	52
32	Whitney Houston & Cece Winans, Count On	18	4
33	Rappin' 4-Tay, An't No Playa	18	16
34	LL Cool J, Don't	17	17
35	Total, No One Else	17	19
36	Quad City D.J.'s, C'mon 'n Ride It	17	14
37	Janet Jackson, Runaway	15	17
38	Silk, Hook'd On You	13	45
39	Montell Jordan, This Is How We Do It	12	10
40	Janet Jackson, Runaway	10	3

KIX 106		PD: Joe Dawson Inter-m. MD. B.B. Good	
WVIX Providence	TW LW		
1	Brandy, Sittin' Up In My Room	88	91
2	Mary J. Blige, Not Gon' Cry	86	88
3	D'Angelo, Lady	83	62
4	LL Cool J, Don't	68	42
5	2Pac, California Love	66	91
6	Fugees, Fu-Gee-La	62	90
7	Celine Dion, Because You Loved Me	46	3
8	Deborah Cox, Who Do U Love	44	35
9	Coolio, I.2.3.4	44	45
10	Monica Lisa, Can't Be Wasting My Time	43	32
11	Fat Joe, Eny	41	22
12	Busta Rhymes, Woo-Hah!! Got You All In C	38	25
13	The Tony Rich Project, Nobody Knows	37	36
14	Lina Santiago, Feels So Good	36	23
15	Skin Deep, No More Games	27	21
16	Rappin' 4-Tay, An't No Playa	27	16
17	Groove Theory, Keep Tryn'	26	23
18	Mariah Carey, Always Be My Baby	25	31
19	Fugees, Killing Me Softly	24	4
20	Total, No One Else	21	21
21	George Michael, Jesus To A Child	20	37
22	Quad City D.J.'s, C'mon 'n Ride It	20	20
23	Immature, We Got It	19	42
24	New Power Generation, Girl 6	19	7
25	SWV, You're The One	17	0
26	Everything But The Girl, Missing	16	7
27	Planet Soul, Set U Free	16	19
28	Real McCoy, Automatic Lover	16	18
29	Groove Theory, Tell Me	16	19
30	La Bouche, Be My Lover	16	15
31	Intrigue, Darcy With Me	16	11
32	3T, Anything	15	24
33	Outrageous Brothers, Don't Stop	15	14
34	Jodeci, Love U 4 Life	15	12
35	A2, Sugar Hill	14	12
36	Blazin' Blazin', Danger	14	15
37	Domino, Physical Funk	13	25
38	D-Team, Shit Like With Your Luv	14	6
39	Junior M.A.F.I.A., Get Money	13	16
40	Selena, Dreaming Of You	13	14

HOOSIER 96.3		PD: Scott Wheeler MD: Carl Frye	
WHHH Indianapolis	TW LW		
1	Mariah Carey, Always Be My Baby	55	50
2	The Tony Rich Project, Nobody Knows	53	55
3	Coolio, I.2.3.4	52	47
4	Brandy, Sittin' Up In My Room	52	52
5	R. Kelly, Down Low	50	47
6	Deborah Cox, Who Do U Love	50	53
7	2Pac, California Love	49	39
8	D'Angelo, Lady	41	38
9	Joe, All The Things	40	38
10	Mary J. Blige, Not Gon' Cry	38	45
11	Chantay Savage, I Will Survive	37	27
12	Groove Theory, Tell Me	37	27
13	Mariah Carey & Boyz II Men, One Sweet Day	36	38
14	TLC, Kick Your Game	36	36
15	Ivette Michelle, Everyday & Evernight	35	37
16	Xscape, Do You Want To	35	38
17	La Bouche, Be My Lover	33	30
18	Planet Soul, Set U Free	32	31
19	LL Cool J, Hey Lover	32	34
20	Total, No One Else	27	25
21	Lionel Richie, Don't Wanna Lose You	27	25
22	Rappin' 4-Tay, An't No Playa	22	27
23	Riki Ross, Tonight's The Night	22	22
24	Sole, When Do I Want Me To Put It	21	18
25	Quincy Jones, Babyface, Tamia, Slow Jam	18	9
26	Silk, Hook'd On You	17	16
27	Groove Theory, Keep Tryn'	17	30
28	Groove Theory, Tell Me	15	15
29	Sole, Heaven	15	14
30	3T, Anything	15	15
31	Monica, Before You Walk Out Of My Life	15	16
32	Fugees, Killing Me Softly	15	3
33	LL Cool J, Don't	14	14
34	Clicq, Hurricane	14	18
35	Art N' Soul, Ever Since You Went Away	14	19
36	N-Trance, Stay'n Alive	13	19
37	J'son, Take A Look	13	16
38	TLC, Digg'n On You	13	16
39	Monica, Don't Take It Personal	13	16
40	Mariah Carey, Fantasy	13	15
41	The Dogg Pound, Let's Play House	12	20

94.1 JAMZ		PD: Mike Marino APD: M.C. Scrapy MD: Kid Stevens	
KJMZ Las Vegas	TW LW		
1	Mariah Carey, Always Be My Baby	65	64
2	Mary J. Blige, Not Gon' Cry	61	60
3	Whitney Houston, Exhale	54	64
4	Brandy, Sittin' Up In My Room	53	47
5	3T, Anything	48	65
6	The Tony Rich Project, Nobody Knows	48	62
7	Everything But The Girl, Missing	47	49
8	J'son, Take A Look	46	27
9	Planet Soul, Set U Free	45	34

★ ★ ★ **AIRPOWER** ★ ★ ★
(Minimum 600 detections for the first time)

NO RECORDS QUALIFIED FOR AIRPOWER THIS WEEK

AIRPOWER BOUND

Total Plays/Gain

LL COOL J 557/40
Doin It (Def Jam/RAL/Island)
Total Stations: 28/Chart Move: 21-18
Heavy (40+): 3 KBXX, WQHT, WWKX
Medium (20-39): 6 KKSS, KMEL, KUBE, WERQ, WJJS, WJMH
Light (Under 20): 19

DEBORAH COX 536/11
Who Do U Love (Arista)
Total Stations: 28/Chart Move: 20-19
Heavy (40+): 4 KDON, WHHH, WJJS, WWKX
Medium (20-39): 7 KCAQ, KKFR, KKSS, KQKS, KZFM, KZHT, XHTZ
Light (Under 20): 17

CELINE DION 516/292
Because You Loved Me (550 Music)
Total Stations: 20/Chart Move: Debut 21
Heavy (40+): 7 KBOS, KKSS, KPRR, KSFM, KUBE, KZFM, WWKX
Medium (20-39): 3 KJMZ, KLUC, KTFM
Light (Under 20): 10
New Airplay This Week: 8 KJMZ, KKFR, KLUC, KMEL, KYLD, WJMN, WPOW, WWKX

ACE OF BASE 354/16
Lucky Love (Arista)
Total Stations: 19/Chart Move: 30-25
Heavy (40+): 1 KZHT
Medium (20-39): 9 KBOS, KKFR, KXXX, KPRR, KYLD, KZFM, WBBM, WJJS, XHTZ
Light (Under 20): 9
New Airplay This Week: 1 KYLD

ANGELINA 340/37
Release Me (Upstairs)
Total Stations: 14/Chart Move: 34-27
Heavy (40+): 4 KMEL, KPWR, KUBE, KYLD
Medium (20-39): 3 KDON, KTFM, XHTZ
Light (Under 20): 7
New Airplay This Week: 2 KCAQ, WBBM

SELENA 337/73
I'm Getting Used To You (EMI Latin/EMI)
Total Stations: 13/Chart Move: 38-28
Heavy (40+): 2 KDON, KLUC
Medium (20-39): 7 KBOS, KKFR, KXXX, KPRR, KSFM, KTFM, KZFM
Light (Under 20): 4
New Airplay This Week: 2 KJMZ, KSFM

★ **SWV** 293/254
You're The One (RCA)
Total Stations: 17/Chart Move: Debut 34
Heavy (40+): 1 WJMH

Medium (20-39): 3 KBXX, WJMN, WPGC
Light (Under 20): 13
New Airplay This Week: 12 KBOS, KBXX, KCAQ, KDON, KKFR, KLUC, KMEL, WERQ, WHHH, WJMN, WQHT, WWKX

J'SON 263/7
Take A Look (Hollywood)
Total Stations: 11/Chart Move: 39-36
Heavy (40+): 3 KJMZ, KKFR, KLUC
Medium (20-39): 3 KZFM, KZHT, XHTZ
Light (Under 20): 5

LA BOUCHE 256/67
Sweet Dreams (RCA)
Total Stations: 15/Chart Move: Debut 37
Heavy (40+): 1 KPRR
Medium (20-39): 4 KKFR, KTFM, KZFM, WBBM
Light (Under 20): 10
New Airplay This Week: 1 XHTZ

BUSTA RHYMES 229/106
Woo-Hah!! Got You All In Check (Flipmode/Elektra/EEG)
Total Stations: 19
Heavy (40+): 1 WQHT
Medium (20-39): 3 WJMH, WPGC, WWKX
Light (Under 20): 15
New Airplay This Week: 3 KMEL, KPWR, KYLD

BUFFY 212/34
Give Me (Velocity)
Total Stations: 12
Heavy (40+): 2 KYLD, WBBM
Medium (20-39): 3 KMEL, KPRR, KTFM
Light (Under 20): 7

QUAD CITY DJ'S 183/20
C'mon 'n Ride It (The Train) (Quadrasound/Big Beat/Atlantic)
Total Stations: 17
Heavy (40+): 0
Medium (20-39): 3 KTFM, WJJS, WWKX
Light (Under 20): 14
New Airplay This Week: 1 KDON

MONA LISA FEAT. LOST BOYZ 176/7
Can't Be Wasting My Time (Island)
Total Stations: 15
Heavy (40+): 2 WWKX, XHTZ
Medium (20-39): 2 KCAQ, WQHT
Light (Under 20): 11

WHITNEY HOUSTON & CECE WINANS 159/28
Count On Me (Arista)
Total Stations: 12
Heavy (40+): 1 WPGC

Medium (20-39): 1 WJJS
Light (Under 20): 10
New Airplay This Week: 3 KJMZ, KLUC, KTFM

LIONEL RICHIE 152/94
Don't Wanna Lose You (Mercury)
Total Stations: 11
Heavy (40+): 0
Medium (20-39): 3 KSFM, WHHH, WPGC
Light (Under 20): 8
New Airplay This Week: 3 KBOS, WJMH, WWKX

MC LYTE FEAT. XScape 150/6
Keep On, Keepin' On (Flavor Unit/EastWest/EEG)
Total Stations: 14
Heavy (40+): 0
Medium (20-39): 2 KBXX, WQHT
Light (Under 20): 12

TOTAL 140/37
Kissin' You (Bad Boy/Arista)
Total Stations: 7
Heavy (40+): 1 WJMH
Medium (20-39): 3 KBXX, WPGC, WQHT
Light (Under 20): 3
New Airplay This Week: 1 WERQ

ARTIE THE 1 MAN PARTY 128/18
Esa Nena Linda (Groove Nation/Scotti Bros./All American)
Total Stations: 14
Heavy (40+): 1 KPWR
Medium (20-39): 1 KYLD
Light (Under 20): 12

SILK 123/52
Don't Rush (Elektra/EEG)
Total Stations: 5
Heavy (40+): 1 KDON
Medium (20-39): 2 KLUC, KQKS
Light (Under 20): 2
New Airplay This Week: 2 KCAQ, KLUC

NONCHALANT 115/22
5 O'clock (MCA)
Total Stations: 9
Heavy (40+): 1 WPGC
Medium (20-39): 1 WJMH
Light (Under 20): 7

HORACE BROWN 105/11
One For The Money (Motown)
Total Stations: 8
Heavy (40+): 0
Medium (20-39): 2 WERQ, WQHT
Light (Under 20): 6
New Airplay This Week: 1 WHHH

MOST NEW AIRPLAY THIS WEEK

No. Of Stations

SWV 12
You're The One (RCA)

CELINE DION 8
Because You Loved Me (550 Music)

FUGEES 6
Killing Me Softly (Ruffhouse/Columbia)

COOLIO 5
1,2,3,4 (Sumpin' New) (Tommy Boy)

WHITNEY HOUSTON & CECE WINANS 3
Count On Me (Arista)

BUSTA RHYMES 3
Woo-Hah!! Got You All In Check (Flipmode/Elektra/EEG)

LIONEL RICHIE 3
Don't Wanna Lose You (Mercury)

SEAL 105/28
Don't Cry (ZTT/Warner Bros.)
Total Stations: 9
Heavy (40+): 0
Medium (20-39): 3 KZFM, KZHT, WPGC
Light (Under 20): 6

QUINCY JONES FEAT. BABYFACE & TAMIA WITH PORTRAIT 106'30
Slow Jams (Qwest/Warner Bros.)
Total Stations: 14
Heavy (40+): 0
Medium (20-39): 2 KGGI, WERQ
Light (Under 20): 12
New Airplay This Week: 2 KGGI, KJMZ

INTRIGUE 99/14
Dance With Me (Universal)
Total Stations: 6
Heavy (40+): 0
Medium (20-39): 2 KJMZ, WJJS
Light (Under 20): 4

REAL MCCOY 78/5
Sleeping With An Angel (Arista)
Total Stations: 3
Heavy (40+): 1 KZHT
Medium (20-39): 1 WJJS
Light (Under 20): 1

FAITH EVANS 72/12
Kissing You (Arista)
Total Stations: 5
Heavy (40+): 0
Medium (20-39): 2 WERQ, WPGC
Light (Under 20): 3

LIVIN' JOY 71/3
Dreamer (MCA)
Total Stations: 7
Heavy (40+): 0
Medium (20-39): 1 WKTU
Light (Under 20): 6

LAURA MARTINEZ 69/19
Ritmo Latino (Thump)
Total Stations: 10
Heavy (40+): 0
Medium (20-39): 1 KPRR
Light (Under 20): 9

EXPOSE 67/9
I'll Say Good-Bye For The Two Of Us (Arista)
Total Stations: 3
Heavy (40+): 1 KTFM
Medium (20-39): 0

Light (Under 20): 2
New Airplay This Week: 1 KPRR

★ **BEL CANTO** 64/27
Rumor (Lava/Atlantic)
Total Stations: 8
Heavy (40+): 0
Medium (20-39): 1 WJJS
Light (Under 20): 7
New Airplay This Week: 1 KKFR, WKX
Light (Under 20): 1

★ **FAT JOE** 56/31
Envy (Ruthless/Relativity)
Total Stations: 3
Heavy (40+): 1 WWKX
Medium (20-39): 0
Light (Under 20): 2
New Airplay This Week: 1 WQHT

★ **THE OUTHERE BROTHERS** 55/9
Don't Stop (Aureus)
Total Stations: 9
Heavy (40+): 0
Medium (20-39): 0
Light (Under 20): 9
New Airplay This Week: 1 WWKX

★ **PURE SOUL** 54/20
Stairway To Heaven (Step Sun/Interscope)
Total Stations: 2
Heavy (40+): 0
Medium (20-39): 2 WERQ, WPGC
Light (Under 20): 0

★ **TINA ARENA** 52/19
Chains (Epic)
Total Stations: 6
Heavy (40+): 0
Medium (20-39): 1 XHTZ
Light (Under 20): 5
New Airplay This Week: 2 KCAQ, WJJS

★ **FUGEES** 52/21
Ready Or Not (Ruffhouse/Columbia)
Total Stations: 5
Heavy (40+): 1 WPGC
Medium (20-39): 0
Light (Under 20): 4

Airpower awarded to those records which attain 600 detections for the first time. New airplay lists those stations registering six or more detections per week on a record for the first time. ★ Initial impact: records appearing on this page for the first time.

THE MUCH-ANTICIPATED FOLLOW-UP
TO THEIR TRIPLE PLATINUM SUCCESS

SWV

SISTERS WITH VOICES



SINGLETON MANAGEMENT
[HTTP://WWW.PEEPS.COM](http://www.peeps.com)

"YOU'RE THE ONE"

THE FIRST SINGLE FROM
"NEW BEGINNING"

1ST WEEK
DEBUT **34**

TOP 40/RHYTHM-CROSSOVER MONITOR!!

For Week Ending March 17, 1996



Detailed song tracking information for the last 3 weeks for all songs showing increased play this week. Total plays and gain do not include video play. Markets listed in order of population.

ACE OF BASE 354/16
Lucky Love (Arista)
Total Stations: 19
Chart Move: 30-25

ANGELINA 340/37
Release Me (Upstairs)
Total Stations: 14
Chart Move: 34-27

ARTIE THE 1 MAN PARTY 128/18
Asa Nena Linda (Groove Nation/Scotti Bros./All American)
Total Stations: 14

HORACE BROWN 105/11
One For The Money (Motown)
Total Stations: 8

BUFFY 212/34
Give Me (Velocity)
Total Stations: 12

BUSTA RHYMES 229/106
Woo-Hah!! Got You All in Check (Flipmode/Elektra/EEG)
Total Stations: 19

MARY J. BLIGE 1362/7
Not Gon' Cry (Arista)
Total Stations: 31
Chart Move: 3-3

COOLIO 759/158
1,2,3,4 (Sumpin' New) (Tommy Boy)
Total Stations: 29
Chart Move: 17-13

DEBORAH COX 536/11
Who Do U Love (Arista)
Total Stations: 28
Chart Move: 20-19

D'ANGELO 758/99
Lady (EMI)
Total Stations: 26
Chart Move: 14-14

CELINE DION 516/292
Because You Loved Me (550 Music)
Total Stations: 20
Chart Move: Debut 21

FUGEES 893/270
Killing Me Softly (Ruffhouse/Columbia)
Total Stations: 27
Chart Move: 16-7

WHITNEY HOUSTON & CECE WINANS 159/28
Count On Me (Arista)
Total Stations: 12

INTRIGUE 99/14
Dance With Me (Universal)
Total Stations: 6

J'SON 263/7
Take A Look (Hollywood)
Total Stations: 11
Chart Move: 39-36

QUINCY JONES FEAT. BABYFACE & TAMIA 105/30
Slow Jams (Qwest/Warner Bros.)
Total Stations: 14

R. KELLY FEAT. RONALD ISLEY 817/68
Down Low (Nobody Has To Know) (Jive)
Total Stations: 27
Chart Move: 12-10

LA BOUCHE 256/67
Sweet Dreams (RCA)
Total Stations: 15
Chart Move: Debut 37

LL COOL J 557/40
Do In It (Def Jam/RAL/Island)
Total Stations: 28
Chart Move: 21-18

MC LYTE FEAT. XSCAPE 150/6
Keep On, Keepin' On (Flavor Unit/EastWest/EEG)
Total Stations: 14

MONA LISA 176/7
Can't Be Wasting My Time (Island)
Total Stations: 15

NONCHALANT 115/22
5 O'Clock (MCA)
Total Stations: 9

QUAD CITY DJ'S 183/20
C'mon 'N Ride It (The Train) (Quadrasound/Big Beat/Atlantic)
Total Stations: 17

REAL MCCOY 78/5
Sleeping With An Angel (Arista)
Total Stations: 3

LIONEL RICHIE 152/94
Don't Wanna Lose You (Mercury)
Total Stations: 11

SEAL 105/28
Don't Cry (ZTT/Warner Bros.)
Total Stations: 9

SELENA 337/73
I'm Getting Used To (EMI Latin/EMI)
Total Stations: 13
Chart Move: 38-28

SILK 123/52
Don't Rush (Elektra/EEG)
Total Stations: 5

SWV 293/254
You're The One (RCA)
Total Stations: 17
Chart Move: Debut 34

TOTAL 140/37
Kissin' You (Bad Boy/Arista)
Total Stations: 7

POWER PLAYLIST

For Week Ending March 17, 1996



Playlists supplied by Broadcast Data Systems' Radio Track service. Stations selected from panel of leading broadcasters in 125 radio markets, electronically monitored 24 hours a day, 7 days a week. Songs ranked by number of plays in monitored week.

Grid of 20 radio station playlists including WPLJ, MIX 105, STAR 98.7, STAR 104.5, MIX 101.9, WPNT, MIX 107.3, Q95, MIX 98.5, MIX 96.5, KS95, Q104, MIX 102.9, KYKY, STAR 101.5, Q106, MIX 106.5, MIX 96, VARIETY 96, WBLI, WKTI, SUNNY 107.9, WRMF, and MY102.5.

BDS IMPACT

AIRPOWER
(Minimum 600 detections for the first time)

BODEANS 666/90
Closer To Free (Slash)
Total Stations: 36/Chart Move: 20-18
Heavy (30+ plays): 10 KFMB, KSTP, KSTZ, KYSR, WKTI, WMXV, WPLJ, WQLH, WRQX, WWTY
Medium (15-29): 9 KHM, KKOB, KPLZ, WBLI, WKDD, WMTX, WMXL, WWSN, WWSN
Light (Under 15): 17
New Airplay This Week: 1 WMXL

SOPHIE B. HAWKINS 602/6
Only Love (Columbia)
Total Stations: 36/Chart Move: 19-20
Heavy (30+): 3 WQAL, WQLH, WWTY
Medium (15-29): 18 KDMX, KHM, KKLQ, KKOB, KPLZ, KSTZ, KYKY, WBLI, WKDD, WKQI, WKTI, WKZL, WMC, WMXV, WPNT, WRQX, WWSN, WYYY
Light (Under 15): 15

AIRPOWER BOUND

JANN ARDEN 557/57
Insensitive (A&M)
Total Stations: 34/Chart Move: 21-21
Heavy (30+ plays): 5 KHM, KKLQ, WKTI, WQLH, WZPK
Medium (15-29): 12 KDMX, KFMB, KSTZ, KYSR, WAEV, WBLI, WBMX, WCO, WKDD, WMXV, WWSN, WYYY
Light (Under 15): 17
New Airplay This Week: 1 WKZL

ALANIS MORISSETTE 448/130
Ironic (Maverick/Reprise)
Total Stations: 24/Chart Move: 30-22
Heavy (30+): 5 KFMB, KHM, KYSR, WBLI, WPLJ
Medium (15-29): 8 KPLZ, KSTP, WKDD, WKTI, WMXV, WQLH, WRQX, WZPK
Light (Under 15): 11
New Airplay This Week: 5 KKOB, KSTP, KSTZ, WQLH, WWSN

THE TONY RICH PROJECT 444/67
Nobody Knows (LaFace/Arista)
Total Stations: 26/Chart Move: 24-23
Heavy (30+): 5 KKOB, WIVY, WKTI, WMXL, WZPK
Medium (15-29): 9 KKLQ, KPLZ, WAEV, WKDD, WMYI, WQLH, WRMF, WWSN, WYYY
Light (Under 15): 12
New Airplay This Week: 2 WBMX, WIOG

GIN BLOSSOMS 443/76
Follow You Down (A&M)
Total Stations: 27/Chart Move: 26-24
Heavy (30+): 3 KFMB, KYSR, WMXV
Medium (15-29): 10 KDMX, KHM, KKOB, KSTZ, WKTI, WPLJ, WQLH, WRQX, WWTY, WWSN
Light (Under 15): 14
New Airplay This Week: 3 WAEV, WKTI, WWTY

COLLECTIVE SOUL 412/36
The World I Know (Atlantic)
Total Stations: 27/Chart Move: 25-25
Heavy (30+): 5 KFMB, KHM, KKOB, KYSR, WQAL

Medium (15-29): 9 KKLQ, WKDD, WKZL, WMXV, WPLJ, WQLH, WRQX, WWTY, WWSN
Light (Under 15): 13
New Airplay This Week: 1 WQLH

BLUES TRAVELER 399/75
Hook (A&M)
Total Stations: 18/Chart Move: 29-27
Heavy (30+): 6 KSTP, KSTZ, KYSR, WAEV, WQLH, WZPK
Medium (15-29): 7 KKOB, WBLI, WKDD, WKTI, WMXV, WPLJ, WYYY
Light (Under 15): 5

MARIAH CAREY 372/128
Always Be My Baby (Columbia)
Total Stations: 27/Chart Move: 34-28
Heavy (30+): 2 KKOB, WQLH
Medium (15-29): 12 KKLQ, KPLZ, KTHT, KYKY, WAEV, WBMX, WIVY, WKDD, WMXL, WRQX, WWTY, WWSN
Light (Under 15): 13
New Airplay This Week: 7 KTHT, KYKY, WAEV, WMB, WMYI, WRQX, WYXR

ROD STEWART 369/29
So Far Away (Lava/Atlantic)
Total Stations: 26/Chart Move: 28-29
Heavy (30+): 6 KKLQ, KTHT, WEZF, WKZL, WMYI, WWTY
Medium (15-29): 3 WMC, WMXL, WRMF
Light (Under 15): 17

ACE OF BASE 250/5
Lucky Love (Arista)
Total Stations: 17/Chart Move: 33-33
Heavy (30+): 1 WQLH
Medium (15-29): 8 KKLQ, KKOB, WAEV, WKDD, WMXL, WMXV, WMYI, WWSN
Light (Under 15): 8
New Airplay This Week: 1 KKOB

SMASHING PUMPKINS 208/13
1979 (Virgin)
Total Stations: 18/Chart Move: 36-35
Heavy (30+): 2 KFMB, KYSR
Medium (15-29): 3 KKLQ, WBMX, WRQX
Light (Under 15): 13

MOST NEW AIRPLAY THIS WEEK

MARIAH CAREY 7
Always Be My Baby (Columbia)

TINA ARENA 6
Chains (Epic)

ALANIS MORISSETTE 5
Ironic (Maverick/Reprise)

LIONEL RICHIE 4
Don't Wanna Lose You (Mercury)

GIN BLOSSOMS 3
Follow You Down (A&M)

WHITNEY HOUSTON & CECE WINANS 3
Count On Me (Arista)

WHITNEY HOUSTON & CECE WINANS 188/41
Count On Me (Arista)
Total Stations: 20/Chart Move: 38-36
Heavy (30+): 0
Medium (15-29): 4 KISN, KTHT, WPNT, WYXR
Light (Under 15): 16
New Airplay This Week: 3 KTHT, WKDD, WVAF

TINA ARENA 179/95
Chains (Epic)
Total Stations: 15/Chart Move: Debut 37
Heavy (30+): 0
Medium (15-29): 6 KYKY, WMXV, WMXL, WMXV, WPNT, WQLH
Light (Under 15): 9
New Airplay This Week: 6 KKLQ, WKDD, WKQI, WMC, WMXL, WZPK

DOG'S EYE VIEW 151/5
Everything Falls Apart (Columbia)
Total Stations: 10/Chart Move: 39-40
Heavy (30+): 1 KYSR
Medium (15-29): 4 KHM, WMXV, WPLJ, WQLH
Light (Under 15): 5
New Airplay This Week: 2 KFMB, WRQX

CHART BOUND

STING 116/22
Let Your Soul Be Your Pilot (A&M)
Total Stations: 16
Heavy (30+): 1 KYSR
Medium (15-29): 1 KKLQ
Light (Under 15): 14
New Airplay This Week: 1 WCO

MARTIN PAGE 104/5
Light In Your Heart (Mercury)
Total Stations: 13
Heavy (30+): 0
Medium (15-29): 3 WAEV, WKTI, WMXV
Light (Under 15): 10

THIS WEEK	LAST WEEK	WEEKS ON	TITLE/LABEL	ARTIST	TW	LW
			★ ★ ★ No. 1 ★ ★ ★			
1	1	22	TIME ATLANTIC 2 weeks at No. 1	HOOTIE & THE BLOWFISH	1211	1228
2	2	20	ONE SWEET DAY COLUMBIA	MARIAH CAREY & BOYZ II MEN	1156	1178
3	3	25	NAME WARNER BROS.	GOO GOO DOLLS	1056	1116
4	15	5	BECAUSE YOU LOVED ME 550 MUSIC	CELINE DION	1029	761
5	5	18	MISSING ATLANTIC	EVERYTHING BUT THE GIRL	996	959
6	4	24	BREAKFAST AT TIFFANY'S RAINMAKER/INTERSCOPE	DEEP BLUE SOMETHING	994	1001
7	6	24	BLESSED ROCKET/ISLAND	ELTON JOHN	888	923
8	7	17	DON'T CRY ZTT/WARNER BROS.	SEAL	858	851
9	13	13	I WANT TO COME OVER ISLAND	MELISSA ETHERIDGE	829	769
10	9	33	ROLL TO ME A&M	DEL AMITRI	814	826
11	10	33	TIL I HEAR IT FROM YOU A&M	GIN BLOSSOMS	808	824
12	11	15	WONDER ELEKTRA/EEG	NATALIE MERCHANT	808	780
13	8	26	BACK FOR GOOD ARISTA	TAKE THAT	771	838
14	14	43	RUN AROUND A&M	BLUES TRAVELER	768	766
15	12	45	AS I LAY ME DOWN COLUMBIA	SOPHIE B. HAWKINS	735	776
16	17	17	ONE OF US BLUE GORILLA/MERCURY	JOAN OSBORNE	715	672
17	16	37	ONLY WANNA BE WITH YOU ATLANTIC	HOOTIE & THE BLOWFISH	708	733
			★ ★ ★ AIRPOWER ★ ★ ★			
18	20	7	CLOSER TO FREE SLASH/REPRISE	BODEANS	666	576
19	18	40	KISS FROM A ROSE ZTT/SIRE/WARNER BROS.	SEAL	618	620
			★ ★ ★ AIRPOWER ★ ★ ★			
20	19	7	ONLY LOVE (THE BALLAD OF SLEEPING BEAUTY) COLUMBIA	SOPHIE B. HAWKINS	602	596
21	21	11	INSENSITIVE A&M	JANN ARDEN	557	500
22	30	4	IRONIC MAVERICK/REPRISE	ALANIS MORISSETTE	448	318
23	24	9	NOBODY KNOWS LAFACE/ARISTA	THE TONY RICH PROJECT	444	377
24	26	4	FOLLOW YOU DOWN A&M	GIN BLOSSOMS	443	367
25	25	8	THE WORLD I KNOW ATLANTIC	COLLECTIVE SOUL	412	376
26	22	22	EXHALE (SHOOO SHOOO) ARISTA	WHITNEY HOUSTON	401	470
27	29	8	HOOK A&M	BLUES TRAVELER	399	324
28	34	3	ALWAYS BE MY BABY COLUMBIA	MARIAH CAREY	372	244
29	28	10	SO FAR AWAY LAVA/ATLANTIC	ROD STEWART	369	340
30	23	21	YOU'LL SEE MAVERICK/WARNER BROS.	MADONNA	351	451
31	27	6	OH VIRGINIA EMI	BLESSID UNION OF SOULS	309	356
32	32	7	WONDERWALL EPIC	OASIS	264	290
33	33	4	LUCKY LOVE ARISTA	ACE OF BASE	250	245
34	31	25	GOOD INTENTIONS COLUMBIA/REPRISE	TOAD THE WET SPROCKET	245	294
35	36	5	1979 VIRGIN	SMASHING PUMPKINS	208	195
36	38	3	COUNT ON ME ARISTA	WHITNEY HOUSTON & CECE WINANS	188	147
37	NEW		CHAINS EPIC	TINA ARENA	179	84
38	35	18	HAND IN MY POCKET MAVERICK/REPRISE	ALANIS MORISSETTE	169	203
39	37	3	THE RIGHT TIME 143/LAVA/ATLANTIC	THE CORRS	154	159
40	39	2	EVERYTHING FALLS APART COLUMBIA	DOG'S EYE VIEW	151	146

Records showing an increase in detections over the previous week, regardless of chart movement. A record which has been on the chart for more than 20 weeks will not receive a bullet, even if it registers an increase in detections. Airpower awarded to those records which attain 600 detections for the first time. If two records are tied in number of plays, the record being played on more stations is placed first. Records below the top 20 are removed from the chart after 26 weeks. © 1996, Billboard/BPI Communications.



Liza Minnelli & Donna Summer

“Does He Love You”
The single from Liza Minnelli's full length CD “Gently.”

“This cover of Country's #1 ballad is now the talk of AC...”

Produced by Brooks Arthur Executive Producers: Jay Landers & Steve Murphy

AIRPLAY Monitor **SONG ACTIVITY REPORTS**

For Week Ending March 17, 1996

ADULT TOP 40

ADULT CONTEMPORARY

JANN ARDEN		557/57			
Insensitive (A&M)		Total Stations: 34			
Chart Move: 21-21		Total Plays/Gain			
City	Station	TW	LW	ZW	IP
New York	VH1	19	21	23	274
New York	WKVI	19	21	23	274
L.A.	KYSR	29	33	34	10
Chicago	WPTN	1	1	1	1
Chicago	WTMX	1	1	1	1
Phila.	WYXR	1	1	1	1
Detroit	WKQI	1	1	1	1
Dallas	KDMX	29	30	30	1
Wash., DC	WBXX	6	7	6	1
Boston	KHMX	21	23	28	1
Houston	KHMX	41	30	42	50
Seattle	KPLZ	17	17	11	23
Long Isl.	WBLL	17	11	2	31
San Diego	KFMB	18	24	27	15
Minn.	KKLO	38	25	26	159
Minn.	KSTP	5	6	7	159
St. Louis	KYKY	1	1	1	1
Balt.	WMMX	1	1	1	1
Pitts.	WVTV	1	1	1	1
Tampa	WMTX	1	1	1	1
Cleveland	WOAL	1	1	1	1

BLUES TRAVELER		399/75			
Hook (A&M)		Total Stations: 18			
Chart Move: 29-27		Total Plays/Gain			
City	Station	TW	LW	ZW	IP
New York	VH1	28	19	15	259
New York	WKVI	17	23	10	117
L.A.	KYSR	36	39	38	588
Chicago	WPTN	1	1	1	1
Chicago	WTMX	1	1	1	1
Phila.	WYXR	1	1	1	1
Detroit	WKQI	1	1	1	1
Dallas	KDMX	11	9	21	27
Wash., DC	WBXX	1	1	1	1
Boston	WBXX	1	1	1	1
Houston	WBXX	1	1	1	1
Seattle	KPLZ	1	1	1	1
Long Isl.	WBLL	24	15	19	113
San Diego	KFMB	1	1	1	1
Minn.	KKLO	56	20	22	230
Minn.	KSTP	5	6	7	159
St. Louis	KYKY	1	1	1	1
Balt.	WMMX	1	1	1	1
Pitts.	WVTV	1	1	1	1
Tampa	WMTX	1	1	1	1
Cleveland	WOAL	1	1	1	1

BODEANS		666/90			
Closer To Free (Slash/Reprise)		Total Stations: 36			
Chart Move: 20-18		Total Plays/Gain			
City	Station	TW	LW	ZW	IP
New York	VH1	30	29	24	210
New York	WKVI	34	32	35	151
L.A.	KYSR	41	38	27	117
Chicago	WPTN	1	1	1	1
Chicago	WTMX	1	1	1	1
Phila.	WYXR	1	1	1	1
Detroit	WKQI	1	1	1	1
Dallas	KDMX	30	25	97	28
Wash., DC	WBXX	8	9	11	28
Boston	KHMX	26	20	25	165
Houston	KHMX	29	25	97	180
Seattle	KPLZ	19	12	8	28
Long Isl.	WBLL	17	12	8	31
San Diego	KFMB	42	50	47	623
Minn.	KKLO	59	59	59	126
Minn.	KSTP	64	49	44	307
St. Louis	KYKY	1	1	1	1
Balt.	WMMX	23	6	29	20
Pitts.	WVTV	37	41	23	108
Tampa	WMTX	16	11	10	4
Cleveland	WOAL	2	1	1	4

JANN ARDEN		196/31			
Insensitive (A&M)		Total Stations: 23			
Chart Move: 28-26		Total Plays/Gain			
City	Station	TW	LW	ZW	IP
L.A.	VH1	1	1	1	1
San Fran	KIOI	1	1	1	1
Phila.	WBEB	9	11	14	34
Wash., DC	WASH	1	1	1	1
Long Isl.	WBLL	14	13	3	30
Long Isl.	WBLL	5	4	4	19
Balt.	WLIF	1	1	1	1
Pitts.	WVTV	1	1	1	1
Phoen.	WVTV	1	1	1	1
Cleveland	WVTV	1	1	1	1
Port., OR	WVTV	1	1	1	1
Sacram.	WVTV	1	1	1	1
San Jose	WVTV	1	1	1	1
Buffalo	WVTV	1	1	1	1
Greensb.	WVTV	1	1	1	1

JIM BRICKMAN		200/17			
By Heart (Windham Hill)		Total Stations: 20			
Chart Move: 25-24		Total Plays/Gain			
City	Station	TW	LW	ZW	IP
L.A.	VH1	1	1	1	1
San Fran	KIOI	1	1	1	1
Phila.	WBEB	1	1	1	1
Wash., DC	WASH	1	1	1	1
Long Isl.	WBLL	1	1	1	1
Long Isl.	WBLL	1	1	1	1
Balt.	WLIF	1	1	1	1
Pitts.	WVTV	1	1	1	1
Phoen.	WVTV	1	1	1	1
Cleveland	WVTV	1	1	1	1
Port., OR	WVTV	1	1	1	1
Sacram.	WVTV	1	1	1	1
San Jose	WVTV	1	1	1	1
Buffalo	WVTV	1	1	1	1
Greensb.	WVTV	1	1	1	1

MARIAH CAREY		372/128			
Always Be My Baby (Columbia)		Total Stations: 27			
Chart Move: 34-28		Total Plays/Gain			
City	Station	TW	LW	ZW	IP
New York	VH1	33	22	2	66
New York	WKVI	33	22	2	66
L.A.	KYSR	1	1	1	1
Chicago	WPTN	1	1	1	1
Chicago	WTMX	1	1	1	1
Phila.	WYXR	1	1	1	1
Detroit	WKQI	1	1	1	1
Dallas	KDMX	1	1	1	1
Wash., DC	WBXX	1	1	1	1
Boston	WBXX	1	1	1	1
Houston	WBXX	1	1	1	1
Seattle	KPLZ	1	1	1	1
Long Isl.	WBLL	1	1	1	1
San Diego	KFMB	1	1	1	1
Minn.	KKLO	28	28	21	77
Minn.	KSTP	1	1	1	1
St. Louis	KYKY	1	1	1	1
Balt.	WMMX	1	1	1	1
Pitts.	WVTV	1	1	1	1
Tampa	WMTX	1	1	1	1
Cleveland	WOAL	1	1	1	1

COLLECTIVE SOUL		412/36			
The World I Know (Atlantic)		Total Stations: 27			
Chart Move: 25-25		Total Plays/Gain			
City	Station	TW	LW	ZW	IP
New York	VH1	26	25	24	187
New York	WKVI	26	25	24	187
L.A.	KYSR	20	20	22	149
Chicago	WPTN	1	1	1	1
Chicago	WTMX	1	1	1	1
Phila.	WYXR	1	1	1	1
Detroit	WKQI	1	1	1	1
Dallas	KDMX	1	1	1	1
Wash., DC	WBXX	1	1	1	1
Boston	WBXX	1	1	1	1
Houston	WBXX	1	1	1	1
Seattle	KPLZ	1	1	1	1
Long Isl.	WBLL	1	1	1	1
San Diego	KFMB	1	1	1	1
Minn.	KKLO	31	27	14	116
Minn.	KSTP	1	1	1	1
St. Louis	KYKY	1	1	1	1
Balt.	WMMX	1	1	1	1
Pitts.	WVTV	1	1	1	1
Tampa	WMTX	1	1	1	1
Cleveland	WOAL	1	1	1	1

CELINE DION		1029/268			
Because You Loved Me (550 Music)		Total Stations: 40			
Chart Move: 15-4		Total Plays/Gain			
City	Station	TW	LW	ZW	IP
New York	VH1	21	16	11	71
New York	WKVI	21	16	11	71
L.A.	KYSR	23	10	4	42
Chicago	WPTN	24	26	16	66
Chicago	WTMX	24	26	16	66
Phila.	WYXR	24	26	16	66
Detroit	WKQI	24	26	16	66
Dallas	KDMX	24	26	16	66
Wash., DC	WBXX	24	26	16	66
Boston	WBXX	24	26	16	66
Houston	WBXX	24	26	16	66
Seattle	KPLZ	24	26	16	66
Long Isl.	WBLL	24	26	16	66
San Diego	KFMB	24	26	16	66
Minn.	KKLO	36	25	12	24
Minn.	KSTP	1	1	1	1
St. Louis	KYKY	33	34	145	44
Balt.	WMMX	1	1	1	1
Pitts.	WVTV	46	45	202	2
Tampa	WMTX	32	20	16	74
Cleveland	WOAL	34	21	118	46

MARIAH CAREY		311/116			
Always Be My Baby (Columbia)		Total Stations: 22			
Chart Move: 23-17		Total Plays/Gain			
City	Station	TW	LW	ZW	IP
L.A.	VH1	33	26	2	66
San Fran	KIOI	18	18	18	18
Phila.	WBEB	5	6	23	63
Wash., DC	WASH	29	34	195	58
Long Isl.	WBLL	7	1	1	1
Long Isl.	WBLL	20	5	4	29
Minn.	WLTE	15	7	22	10
Balt.	WLIF	1	1	1	1
Pitts.	WVTV	1	1	1	1
Phoen.	WVTV	1	1	1	1
Cleveland	WVTV	1	1	1	1
Port., OR	WVTV	1	1	1	1
Sacram.	WVTV	1	1	1	1
San Jose	WVTV	1	1	1	1
Buffalo	WVTV	1	1	1	1
Greensb.	WVTV	1	1	1	1

PETER CETERA		338/29			
Faithfully (River North)		Total Stations: 20			
Chart Move: 18-16		Total Plays/Gain			
City	Station	TW	LW	ZW	IP
L.A.	VH1	21	16	19	115
San Fran	KIOI	1	1	1	1
Phila.	WBEB	1	1	1	1
Wash., DC	WASH	13	13	15	112
Long Isl.	WBLL	13	13	15	112
Long Isl.	WBLL	13	13	15	112
Minn.	WLTE	12	12	15	107
Balt.	WLIF	1	1	1	1
Pitts.	WVTV	1	1	1	1
Phoen.	WVTV	1	1	1	1
Cleveland	WVTV	1	1	1	1
Port., OR	WVTV	1	1	1	1
Sacram.	WVTV	1	1	1	1
San Jose	WVTV	1	1	1	1
Buffalo	WVTV	1	1	1	1
Greensb.	WVTV	1	1	1	1

MELISSA ETHERIDGE		829/59			
I Want To Come Over (Island)		Total Stations: 38			
Chart Move: 13-9		Total Plays/Gain			
City	Station	TW	LW	ZW	IP
New York	VH1	37	36	32	227
New York	WKVI	37	36	32	227
L.A.	KYSR	32	35	34	431
Chicago	WPTN	1	1	1	1
Chicago	WTMX	1	1	1	1
Phila.	WYXR	1	1	1	1
Detroit	WKQI	1	1	1	1
Dallas	KDMX	26	20	26	337
Wash., DC	WBXX	26	20	26	337
Boston	WBXX	26	20	26	337
Houston	WBXX	26	20	26	337
Seattle	KPLZ	31	31	42	473
Long Isl.	WBLL	34	33	26	221
San Diego	KFMB	1	1	1	1
Minn.	KKLO	20	24	36	101
Minn.	KSTP	1	1	1	1
St. Louis	KYKY	25	22	175	148
Balt.	WMMX	27	24	20	255
Pitts.	WVTV	37	43	30	106
Tampa	WMTX	32	29	34	171
Cleveland	WOAL	12	5	2	309

EVERYTHING BUT THE GIRL		996/37			
Missing (Atlantic)		Total Stations: 41			
Chart Move: 5-5		Total Plays/Gain			
City	Station	TW	LW	ZW	IP
New York	VH1	21	16	11	155
New York	WKVI	21	16	11	155
L.A.	KYSR	30	34	33	537
Chicago	WPTN	32	30	28	225
Chicago	WTMX	32	30	28	225
Phila.	WYXR	32	30	28	225
Detroit	WKQI	32	30	28	225
Dallas	KDMX	29	19	36	557
Wash., DC	WBXX	29	19	36	557
Boston	WBXX	29	19	36	557
Houston	WBXX	29	19	36	557
Seattle	KPLZ	12	12	15	833
Long Isl.	WBLL	42	44	37	581
San Diego	KFMB	41	37	34	456
Minn.	KKLO	28	29	24	462
Minn.	KSTP	32	27	26	119
St. Louis	KYKY	3	2	1	119
Balt.	WMMX	28	22	1	194
Pitts.	WVTV	20	20	15	106
Tampa	WMTX	27	25	2	

BDS IMPACT

★ ★ ★ **AIRPOWER** ★ ★ ★
(Minimum 200 detections for the first time)

MARIAH CAREY 311/116
Always Be My Baby (Columbia)
Total Stations: 22/Chart Move: 23-17
Heavy (21+): 5 KGBY, WASH, WGSY, WJDX, WMJQ
Medium (14-20): 7 KIOI, WALK, WLAC, WLTE, WMAG, WMGS, WSLQ
Light (Under 14): 10
New Airplay This Week: 5 KESZ, KIOI, WALK, WEBR, WJDX

LIONEL RICHIE 228/167
Don't Wanna Lose You (Mercury)
Total Stations: 19/Chart Move: Debut 22
Heavy (21+): 3 KGBY, WDEF, WMJQ
Medium (14-20): 4 KKCW, WJDX, WRVF, WSLQ
Light (Under 14): 12
New Airplay This Week: 12 KISC, KMZQ, WAHR, WARM, WBEB, WJDX, WLAC, WMAG, WMJQ, WRVF, WSLQ, WTFM

JIM BRICKMAN 200/17
By Heart (Windham Hill)
Total Stations: 20/Chart Move: 25-24
Heavy (21+): 0
Medium (14-20): 7 KESZ, WAHR, WARM, WJDX, WMAG, WSHH, WSLQ
Light (Under 14): 13
New Airplay This Week: 2 KMZQ, WLAC

AIRPOWER BOUND

Total Plays/Gain

JANN ARDEN 196/31
Insensitive (A&M)

Total Stations: 23/Chart Move: 28-26
Heavy (21+): 2 KURB, WAHR
Medium (14-20): 5 KISC, WARM, WEBR, WLHT, WMGS
Light (Under 14): 16
New Airplay This Week: 2 WALK, WMJQ

CHART BOUND

Total Plays/Gain

GOO GOO DOLLS 123/19
Name (Metal Blade/Warner Bros.)

Total Stations: 13
Heavy (21+): 2 KBIG, KVVU
Medium (14-20): 1 WLAC
Light (Under 14): 10
New Airplay This Week: 1 WLAC

★ **TINA ARENA 93/60**
Chains (Epic)

Total Stations: 8
Heavy (21+): 2 KURB, WMJQ
Medium (14-20): 2 KIOI, WRVF
Light (Under 14): 4
New Airplay This Week: 2 WMJQ, WRVF

★ **JIM BRICKMAN 85/22**
If You Believe (Windham Hill)

Total Stations: 12
Heavy (21+): 1 WASH
Medium (14-20): 1 WLTE
Light (Under 14): 10
New Airplay This Week: 1 WLTE

THE CORRS 82/10
Runaway (143/Lava/Atlantic)

Total Stations: 7
Heavy (21+): 1 KIOI
Medium (14-20): 1 KURB
Light (Under 14): 5

THE BEATLES 78/20
Real Love (Apple/Capitol)

Total Stations: 8
Heavy (21+): 1 WALK
Medium (14-20): 1 KISC
Light (Under 14): 6
New Airplay This Week: 1 WALK

MOST NEW AIRPLAY THIS WEEK

LIONEL RICHIE 12
Don't Wanna Lose You (Mercury)

MARIAH CAREY 5
Always Be My Baby (Columbia)

JANN ARDEN 2
Insensitive (A&M)

TINA ARENA 2
Chains (Epic)

JIM BRICKMAN 2
By Heart (Windham Hill)

TRISHA YEARWOOD 52/2
On A Bus To St. Cloud (MCA)

Total Stations: 7
Heavy (21+): 0
Medium (14-20): 1 KKCW
Light (Under 14): 6

THIS WEEK	LAST WEEK	WEEKS ON	DETECTIONS	
			TW	LW
			★ ★ ★ NO. 1 ★ ★ ★	
1	2	5	870	744
2	1	20	727	767
3	3	10	660	652
4	4	24	596	597
5	5	34	560	568
6	9	9	516	477
7	10	8	473	473
8	6	21	472	497
9	8	17	471	477
10	14	3	460	379
11	11	10	407	441
12	12	40	392	425
13	16	18	385	335
14	7	22	381	488
15	13	45	375	408
16	18	4	338	309
			★ ★ ★ AIRPOWER ★ ★ ★	
17	23	2	311	195
18	19	37	309	303
19	17	22	301	334
20	15	14	292	362
21	20	4	283	284
22	NEW		228	61
23	22	7	227	201
			★ ★ ★ AIRPOWER ★ ★ ★	
24	25	4	200	183
25	21	12	198	249
26	28	11	196	165
27	27	15	173	175
28	24	4	155	187
29	26	24	147	176
30	29	24	147	154

Records showing an increase in detections over the previous week, regardless of chart movement. A record which has been on the chart for more than 20 weeks will not receive a bullet, even if it registers an increase in detections. Airpower awarded to those records which attain 200 detections for the first time. If two records are tied in number of plays, the record being played on more stations is placed first. Records below the top 20 are removed from the chart after 26 weeks. © 1996, Billboard/BPI Communications.

ADULT CONTEMPORARY POWER PLAYLISTS

STATION	PD	1	2	3	4	5	6	7	8	9	10	11	12	13	14	15	16	17	18	19	20	
KBIG Los Angeles	Dave Ervin Dave Verdery	Peter Cetera & Crystal Bernard, Forever	Gin Blossoms, Til I Hear It From You	Elton John, Blessed	Madonna, You'll See	Hootie & The Blowfish, Time	Take That, Back For Good	Hootie & The Blowfish, Only Wanna Be Wit	Del Amitri, Roll To Me	Blues Traveler, Run Around	Goo Goo Dolls, Name	Celine Dion, Because You Loved Me	Seal, Don't Cry	Seal, Kiss From A Rose	Rod Stewart, So Far Away	Whitney Houston & Cece Winans, Count On	Del Amitri, Roll To Me	Sophie B. Hawkins, As I Lay Me Down	Madonna, You'll See	Celine Dion, (You Make Me Feel Like) A	Mary Chapin Carpenter, Grow Old With Me	Mariah Carey & Boyz II Men, One Sweet Day
B101 Philadelphia	Jim Ryan	Elton John, Blessed	Take That, Back For Good	Rod Stewart, So Far Away	Mariah Carey & Boyz II Men, One Sweet Day	Seal, Kiss From A Rose	Celine Dion, Because You Loved Me	Vanessa Williams, Colors Of The Wind	Sarah McLachlan, I Will Remember You	Sophie B. Hawkins, As I Lay Me Down	Madonna, You'll See	Celine Dion, (You Make Me Feel Like) A	Mary Chapin Carpenter, Grow Old With Me	Hootie & The Blowfish, Only Wanna Be Wit	Whitney Houston & Cece Winans, Count On	Peter Cetera & Crystal Bernard, Forever	Michael Bolton, A Love So Beautiful	Lionel Richie, Don't Wanna Lose You	Gloria Estefan, Turn The Beat Around	Rod Stewart, Have I Told You Lately	All-4-One, I Can Love You Like That	
K101 San Francisco	Casey Keating Connie Lindell	Mariah Carey & Boyz II Men, One Sweet Day	Corrs, Runaway	Seal, Kiss From A Rose	Hootie & The Blowfish, Only Wanna Be Wit	Whitney Houston, Exhale	Pretenders, I'll Stand By You	Whitney Houston & Cece Winans, Count On	Celine Dion, Because You Loved Me	Take That, Back For Good	Elton John, Blessed	Madonna, You'll See	Melissa Etheridge, I Want To Come Over	Chris Isaak, Somebody's Eryng	Sophie B. Hawkins, As I Lay Me Down	Del Amitri, Roll To Me	Amy Grant/Vince Gill, House Of Love	Mariah Carey, Always Be My Baby	Bryan Adams, Have You Ever Really Loved	Tina Arena, Chains	All-4-One, I Can Love You Like That	
SOFT ROCK 97.1 Washington, DC	Steve Streit Randi Martin	Mariah Carey & Boyz II Men, One Sweet Day	Celine Dion, Because You Loved Me	Take That, Back For Good	Elton John, Blessed	Whitney Houston & Cece Winans, Count On	Mariah Carey, Always Be My Baby	Del Amitri, Roll To Me	Hootie & The Blowfish, Only Wanna Be Wit	Peter Cetera & Crystal Bernard, Forever	Whitney Houston, Exhale	Hootie & The Blowfish, Time	Sophie B. Hawkins, Only Love	Gin Blossoms, Til I Hear It From You	Blues Traveler, Run Around	The Tony Rich Project, Nobody Knows	Martin Page, In The House Of Stone And L	Madonna, You'll See	Jim Brickman, If You Believe	All-4-One, I Can Love You Like That	Sophie B. Hawkins, As I Lay Me Down	
WLTE Minneapolis	Gary Nolan	Celine Dion, Because You Loved Me	Mary Chapin Carpenter, Grow Old With Me	Vanessa Williams, Colors Of The Wind	Jim Brickman, If You Believe	Whitney Houston & Cece Winans, Count On	Mariah Carey, Always Be My Baby	Michael Bolton, A Love So Beautiful	Sophie B. Hawkins, As I Lay Me Down	Bonnie Raitt, So Far Away	Mariah Carey & Boyz II Men, One Sweet Day	Elton John, Blessed	Whitney Houston, Exhale	Martin Page, In The House Of Stone And L	Seal, Kiss From A Rose	Take That, Back For Good	Jim Brickman, Angel Eyes	George Michael, Jesus To A Child	Patty Smyth, Look What Love Has Done	Boyz II Men, I'll Make Love To You/You Te	Peter Cetera & Crystal Bernard, Forever	
WALK Long Island	Gene Michaels Charlie Lombardo	Celine Dion, Because You Loved Me	Madonna, You'll See	Mariah Carey & Boyz II Men, One Sweet Day	Jim Brickman, If You Believe	Blues Traveler, Run Around	Everything But The Girl, Missing	Deep Blue Something, Breakfast At Tiffan	Mariah Carey, Always Be My Baby	Rod Stewart, So Far Away	Peter Cetera & Crystal Bernard, Forever	Blues Traveler, Run Around	Jann Arden, Insestive	Jon B. Feat. Babyface, Someone To Love	Del Amitri, Roll To Me	Martin Page, In The House Of Stone And L	All-4-One, I Can Love You Like That	Goo Goo Dolls, Name	Beetles, Twist And Shout	Michael Jackson, You Are Not Alone	Bonnie Raitt, Something To Talk About	
BRIGHT 99.5 Washington, DC	Jeff Silvers	Natalie Merchant, Wonder	Gin Blossoms, Til I Hear It From You	Celine Dion, Because You Loved Me	Hootie & The Blowfish, Time	Seal, Don't Cry	Mariah Carey & Boyz II Men, One Sweet Day	Sophie B. Hawkins, Only Love	Joan Osborne, One Of Us	Missisa Etheridge, I Want To Come Over	The Tony Rich Project, Nobody Knows	Blessid Union Of Souls, Oh Virginia	Del Amitri, Roll To Me	Jann Arden, Insestive	Peter Cetera, Faithfully	Whitney Houston, Exhale	Sophie B. Hawkins, As I Lay Me Down	Madonna, You'll See	Goo Goo Dolls, Name	Deep Blue Something, Breakfast At Tiffan		
LITE ROCK 106-1/2 Cleveland	Steve LaBeau Jay Hudson	Elton John, Blessed	Seal, Kiss From A Rose	Rod Stewart, So Far Away	Celine Dion, Because You Loved Me	Take That, Back For Good	Mariah Carey & Boyz II Men, One Sweet Day	Madonna, You'll See	Seal, Don't Cry	Selena, Dreaming Of You	Michael Bolton, A Love So Beautiful	Hootie & The Blowfish, Only Wanna Be Wit	Martin Page, Keeper Of The Flame	Reo Speedwagon, Take It On The Run	Jamie Walters, Hold On	Journey, Don't Stop Believin'	Deep Blue Something, Breakfast At Tiffan	George Michael, Jesus To A Child	Eagles, Learn To Be Still	Del Amitri, Roll To Me	Everything But The Girl, Missing	
LITE 102 Baltimore	Gary Balaban Mark Thoner	Celine Dion, Because You Loved Me	Mary Chapin Carpenter, Grow Old With Me	The Tony Rich Project, Nobody Knows	Seal, Don't Cry	Whitney Houston & Cece Winans, Count On	Phil Collins, Somewhere	Jim Brickman, If You Believe	Beetles, Real Love	Curtis Stigers, Keep Me From The Cold	Peter Cetera, Faithfully	Mariah Carey & Boyz II Men, One Sweet Day	Hootie & The Blowfish, Only Wanna Be Wit	Martin Page, Keeper Of The Flame	Rod Stewart, So Far Away	Take That, Back For Good	Sarah McLachlan, I Will Remember You	Peter Cetera & Crystal Bernard, Forever	Seal, Kiss From A Rose	Corrs, Runaway	Michael Bolton, A Love So Beautiful	Bryan Adams, (Everything I Do) I Do It For
WSHH Pittsburgh		Seal, Don't Cry	Jim Brickman, By Heart	Celine Dion, Because You Loved Me	The Tony Rich Project, Nobody Knows	Selena, Dreaming Of You	Des'ree, You Gotta Be	Sophie B. Hawkins, As I Lay Me Down	Seal, Kiss From A Rose	Celine Dion, (You Make Me Feel Like) A	Whitney Houston, Exhale	Michael Jackson, You Are Not Alone	Michael Bolton, A Love So Beautiful	Gloria Estefan, I's Too Late								
K-EZ 99.9 Phoenix	Mike Del Rosso	Sophie B. Hawkins, Only Love	Mariah Carey & Boyz II Men, One Sweet Day	Celine Dion, Because You Loved Me	Rod Stewart, So Far Away	George Michael, Jesus To A Child	Amr Grant, The Things We Do For	Seal, Don't Cry	Peter Cetera, Faithfully	Phil Collins, Somewhere	Take That, Back For Good	Vanessa Williams, Colors Of The Wind	All-4-One, I Can Love You Like That	Des'ree, You Gotta Be	Sophie B. Hawkins, As I Lay Me Down	Seal, Kiss From A Rose	Celine Dion, (You Make Me Feel Like) A	Whitney Houston, Exhale	Michael Jackson, You Are Not Alone	Elton John, The One	Madonna, You'll See	
K103 Portland, OR	Bill Minckler	Selena, Dreaming Of You	Celine Dion, Because You Loved Me	Madonna, You'll See	Phil Collins, Somewhere	Everything But The Girl, Missing	Mariah Carey & Boyz II Men, One Sweet Day	Rod Stewart, So Far Away	Lionel Richie, Don't Wanna Lose You	Trisha Yearwood, On A Bus To St. Cloud	Mary Chapin Carpenter, Grow Old With Me	Whitney Houston & Cece Winans, Count On	Peter Cetera, Faithfully	Jim Brickman, By Heart	All-4-One, I Can Love You Like That	Whitney Houston, Exhale	Selena, Dreaming Of You	Genesis, Hold On My Heart	Sting, Fields Of Gold	Elton John, The One	Madonna, You'll See	

Airpower awarded to those records which attain 200 detections for the first time. New airplay lists those stations registering six or more detections per week on a record for the first time. ★ Initial impact: records appearing on this page for the first time.

POWER PLAYLISTS™

New York			Los Angeles			Chicago		
WXRK			KROQ			WKQX		
PD: Andre Gardner			PD: Kevin Weathers			PD: Bill Gamble		
APD/MD: Chuck Tisa			APD: Gene Sarcobloom			APD/MD: Mary Shuminas		
TW	LW		TW	LW		TW	LW	
1	41	Everclear, Santa Monica	1	43	Stone Temple Pilots, Big Bang Baby	1	47	Bush, Machinehead
2	38	Smashing Pumpkins, 1979	2	42	Everclear, Santa Monica	2	46	Green Day, Brain Stew
3	36	Oasis, Wonderwall	3	40	Smashing Pumpkins, 1979	3	45	Smashing Pumpkins, Zero
4	35	Goldfinger, Here In Your Bedroom	4	39	Oasis, Champagne Supernova	4	40	Oasis, Champagne Supernova
5	34	Stone Temple Pilots, Big Bang Baby	5	38	No Doubt, Spiderwebs	5	39	Spacehog, In The Meantime
6	34	Rancid, Lock Step & Gone	6	37	Goldfinger, Here In Your Bedroom	6	35	Stone Temple Pilots, Big Bang Baby
7	34	Bush, Machinehead	7	37	Smashing Pumpkins, Zero	7	35	Everclear, Santa Monica
8	32	Sparklehorse, Someday I Will Treat You G	8	36	Rancid, Lock Step & Gone	8	35	Foo Fighters, Big Me
9	32	Toadies, Possum Kingdom	9	35	Oasis, Wonderwall	9	33	Goldfinger, Here In Your Bedroom
10	31	Ammonia, Drugs	10	34	Sparklehorse, Someday I Will Treat You G	10	32	Collective Soul, The World I Know
11	31	Oasis, Champagne Supernova	11	33	Jewel, Who Will Save Your Soul	11	31	Seven Mary Three, Cumbersome
12	31	Pearl Jam, I Got It	12	32	Spacehog, In The Meantime	12	31	Stabbing Westward, What Do I Have To Do?
13	31	Flasica, Stuffer	13	31	Green Day, Brain Stew	13	30	Go Go Dolls, Naked
14	30	Spacehog, In The Meantime	14	30	Radiohead, High And Dry	14	29	No Doubt, Just A Girl
15	30	Green Day, Brain Stew	15	29	No Doubt, Just A Girl	15	28	Tracy Bonham, Mother Mother
16	29	Alice In Chains, Heaven Beside You	16	28	Garbage, Only Happy When It Rains	16	27	Smashing Pumpkins, 1979
17	28	No Doubt, Just A Girl	17	27	Lush, Lady Killers	17	27	Pearl Jam, I Got It
18	28	Foo Fighters, "I Think Around	18	27	Dishwalla, Counting Blue Cars	18	26	Filter, Hey Man! No Shot
19	27	Seven Mary Three, Cumbersome	19	26	Bush, Glycerine	19	25	Toadies, Possum Kingdom
20	27	Elastic, Connection	20	25	Alanis Morissette, Ironic	20	24	Marilyn Manson, Sweet Dreams
21	26	Garbage, Only Happy When It Rains	21	24	Seven Mary Three, Cumbersome	21	23	Silverchair, Tomorrow
22	26	Red Hot Chili Peppers, Aeroplane	22	23	Davis, Don't Look Back In Anger	22	22	The Nixons, Sister
23	25	Swans, Ploved	23	22	Pearl Jam, I Got It	23	21	Smashing Pumpkins, Zero
24	25	Lwe, All Over You	24	21	Cracker, I Hate My Generation	24	20	Cracker, I Hate My Generation
25	25	Silverchair, Tomorrow	25	20	Red Hot Chili Peppers, My Friends	25	19	Toadies, Away
26	24	Rancid, Ruby Soho	26	19	Bail Religion, Walk	26	18	Oasis, Wonderwall
27	24	Soundgarden, Fella On Black Days	27	18	Bush, Come Down	27	17	Live, All Over You
28	23	Foo Fighters, Big Me	28	17	Red Hot Chili Peppers, Aeroplane	28	16	Live, Lightning Crashes
29	23	Radiohead, High And Dry	29	16	Bush, Machinehead	29	15	Garbage, Only Happy When It Rains
30	22		30	15	Foo Fighters, Big Me	30	14	Ministry, Lay Lady Lay

The chart and Power Playlists, reprinted from Rock Airplay Monitor, are based on a national sample of data compiled by Broadcast Data Systems' Radio Track service. 73 Modern Rock stations are electronically monitored 24 hours a day, 7 days a week. Songs ranked by number of detections in monitored week.

THIS WEEK	LAST WEEK	WKS ON CHART	TITLE/LABEL/DISTRIBUTING LABEL	ARTIST	TW	LW	DETECTIONS	
			★ ★ ★ NO. 1 ★ ★ ★					
1	1	13	IRONIC MAVERICK/REPRISE	ALANIS MORISSETTE	1920	1903	3 weeks at No. 1	
2	2	17	IN THE MEANTIME HIFI/SIRE/EEG	SPACEHOG	1895	1908		
3	3	10	BIG ME ROSWELL/CAPITOL	FOO FIGHTERS	1883	1784		
4	4	2	BIG BANG BABY ATLANTIC	STONE TEMPLE PILOTS	1789	1780		
5	12	6	CHAMPAGNE SUPERNOVA EPIC	OASIS	1748	1479		
6	5	15	BRAIN STEW/JADED REPRISE	GREEN DAY	1592	1693		
7	6	19	1979 VIRGIN	SMASHING PUMPKINS	1564	1335		
8	7	21	SANTA MONICA (WATCH THE WORLD DIE) TIM KERR/CAPITOL	EVERCLEAR	1529	1380		
9	8	12	HEAVEN BESIDE YOU COLUMBIA	ALICE IN CHAINS	1469	1563		
10	10	8	FOLLOW YOU DOWN A&M	GIN BLOSSOMS	1436	1526		
11	9	9	PEACHES COLUMBIA	THE PRESIDENTS OF THE UNITED STATES OF AMERICA	1421	1568		
12	11	10	AEROPLANE WARNER BROS.	RED HOT CHILI PEPPERS	1420	1492		
13	17	6	MACHINEHEAD TRAUMA/INTERSCOPE	BUSH	1409	1217		
14	19	7	ZERO VIRGIN	SMASHING PUMPKINS	1252	1157		
15	14	20	JUST A GIRL TRAUMA/INTERSCOPE	NO DOUBT	1242	1265		
16	21	5	FLOOD ESSENTIAL/SILVERTONE	JARS OF CLAY	1212	1091		
17	18	10	ONLY HAPPY WHEN IT RAINS ALMO SOUNDS/GEFFEN	GARBAGE	1205	1226		
18	13	19	WONDERWALL EPIC	OASIS	1175	1398		
19	20	9	WHAT DO I HAVE TO DO? COLUMBIA	STABBING WESTWARD	1152	1126		
20	15	11	CAUGHT A LITE SNEEZE ATLANTIC	TORI AMOS	1127	1287		

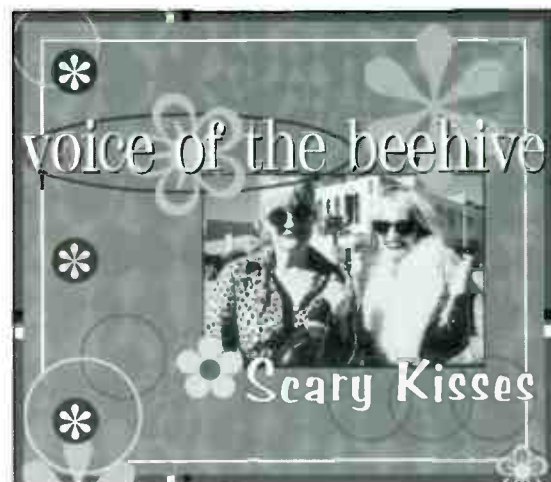
Records showing an increase in detections over the previous week, regardless of chart movement. A record which has been on the chart for more than 20 weeks will not receive a bullet, even if it registers an increase in detections. Airpower awarded to those records which attain 1,000 detections for the first time. If two records are tied in number of plays, the record being played on more stations is placed first. ©1996, Billboard/BPI Communications.

Philadelphia			Boston			Washington, DC		
WPLY			WBCN			WHFS		
PD: John Knapp			VP/Prgrm: Oedipus			PD: Robert Benjamin		
APD/MD: Chuck Tisa			MD: Carter Alan			APD: Bob Waug		
TW	LW		TW	LW		TW	LW	
1	45	Collective Soul, The World I Know	1	35	Bush, Machinehead	1	40	Stone Temple Pilots, Big Bang Baby
2	44	Alanis Morissette, Ironic	2	34	Everclear, Santa Monica	2	45	Smashing Pumpkins, 1979
3	44	Boyz n the Hood, I'm Free	3	33	Stone Temple Pilots, Big Bang Baby	3	44	Alanis Morissette, Ironic
4	43	Casie, Wonderwall	4	32	No Doubt, Just A Girl	4	43	Everclear, Santa Monica
5	43	Spacehog, In The Meantime	5	31	Foo Fighters, Big Me	5	42	Loud Lucy, Talking
6	42	Pearl Jam, I Got It	6	30	Smashing Pumpkins, 1979	6	41	Green Day, Brain Stew
7	41	Folk Implosion, Natural One	7	29	Green Day, Brain Stew	7	40	No Doubt, Just A Girl
8	41	Foo Fighters, Big Me	8	28	Seven Mary Three, Cumbersome	8	39	Sparklehorse, Someday I Will Treat You G
9	40	No Doubt, Just A Girl	9	27	Spacehog, In The Meantime	9	38	Tori Amos, Caught A Lite Sneeze
10	40	Go Go Dolls, Naked	10	26	Cowboy Junkies, A Common Disaster	10	37	Foo Fighters, Big Me
11	39	Bush, Glycerine	11	25	Smashing Pumpkins, Zero	11	36	Love & Rockets, Sweet Lover Hangover
12	39	Smashing Pumpkins, 1979	12	24	Ruby, Tiny Meat	12	35	Salt, Bluster
13	38	Green Day, Brain Stew	13	23	Rancid, Dynamite Wa	13	34	Oasis, Wonderwall
14	38	Green Day, Jaded	14	22	Graviky Kills, Gully	14	33	Cracker, I Hate My Generation
15	37	Seven Mary Three, Cumbersome	15	21	Dog's Eye View, Everything Falls Apart	15	32	Rust, Not Today
16	37	Save Matthews Band, Satellite	16	20	Folk Implosion, Natural One	16	31	Collective Soul, The World I Know
17	36	Toad The Wet Sprocket, Good Intentions	17	19	Oasis, Champagne Supernova	17	30	Cowboy Junkies, A Common Disaster
18	36	Everclear, Santa Monica	18	18	Toadies, Possum Kingdom	18	29	Dog's Eye View, Everything Falls Apart
19	35	Rancid, Ruby Soho	19	17	Alanis Morissette, Ironic	19	28	Smashing Pumpkins, Zero
20	35	Oasis, Champagne Supernova	20	16	Stabbing Westward, What Do I Have To Do?	20	27	Meices, Wow
21	34	Natalie Merchant, Wonder	21	15	Red Hot Chili Peppers, Aeroplane	21	26	Bush, Machinehead
22	34	Alice In Chains, Heaven Beside You	22	14	Garbage, Only Happy When It Rains	22	25	Presidents Of The United States, Peaches
23	33	Bush, Come Down	23	13	Blur, Chartist Blue Cars	23	24	Dishwalla, Counting Blue Cars
24	33	Smashing Pumpkins, Bullet With Butterfly	24	12	Eric Matthews, Fintare	24	23	Bad Religion, A Walk
25	32	Presidents Of The United States, Peaches	25	11	Sparklehorse, Someday I Will Treat You G	25	22	Son Volt, Drawn
26	32	Red Hot Chili Peppers, Aeroplane	26	10	Ammonia, Drugs	26	21	Oasis, Champagne Supernova
27	31	Jewel, Who Will Save Your Soul	27	9	Cracker, I Hate My Generation	27	20	Spacehog, In The Meantime
28	31	GIN Blossoms, Follow You Down	28	8	Cracker, I Hate My Generation	28	19	Pearl Jam, I Got It
29	30	Stone Temple Pilots, Big Bang Baby	29	7	Alice In Chains, Heaven Beside You	29	18	Elastic, Connection
30	29	Soul Asylum, Promises Broken	30	6		30	17	The Alphan Whigs, Honky's Ladder

SAVE BILLBOARD RADIO SEPTEMBER 5-7
THE AIRPLAY AWARDS & NYC SHERATON
DATES AWARDS & STAY TUNED FOR DETAILS

COMBINED TOP 40 AIRPLAY										AIRPLAY THIS WEEK BY FORMAT									
TW	LW	WKS	TITLE (LABEL)	ARTIST	THIS WEEK		LAST WEEK		MAINSTREAM		RHYTHM		ADULT TOP 40		AC		MODERN		
					Audience (millions)	Detections No. Rank	Audience (millions)	Detections No. Rank	Audience (millions)	Detections No. Rank	Audience (millions)	Detections No. Rank	Audience (millions)	Detections No. Rank	Audience (millions)	Detections No. Rank	Audience (millions)	Detections No. Rank	
1	1	20	MISSING (ATLANTIC)	EVERYTHING BUT THE GIRL	66.0804	5830 2	64.9544	5790 1	33.7048	3431 2	14.1308	915 6	14.0848	996 5	3.3222	385 13	0.8378	103 —	
2	3	9	IRONIC (MAVERICK/REPRISE)	ALANIS MORISSETTE	54.6036	6027 1	48.7089	5430 3	31.1771	3616 1	0.6121	42 —	8.4930	448 22	0.0001	1 —	14.3213	1920 1	
3	6	6	ALWAYS BE MY BABY (COLUMBIA)	MARIAH CAREY	50.7481	4518 6	45.8645	3865 11	20.6279	2403 9	24.6336	1431 1	2.6049	372 28	2.8742	311 17	0.0075	1 —	
4	2	23	ONE SWEET DAY (COLUMBIA)	MARIAH CAREY & BOYZ II MEN	48.8597	4491 7	54.4477	5034 4	17.5044	1964 17	9.8970	643 17	14.5337	1156 2	6.9076	727 2	0.0170	1 —	
5	4	10	NOBODY KNOWS (LAFACE/ARISTA)	THE TONY RICH PROJECT	48.8309	5475 3	46.7907	5446 2	27.5138	3355 3	15.6478	1159 5	2.6305	444 23	3.0218	516 6	0.0170	1 —	
6	5	29	NAME (METAL BLADE/WARNER BROS.)	GOO GOO DOLLS	44.7824	4621 4	45.2581	4714 5	25.0969	2927 4	0.0928	14 —	13.8163	1056 3	1.6136	123 —	4.1628	501 —	
7	18	2	BECAUSE YOU LOVED ME (550 MUSIC)	CELINE DION	43.4765	4536 5	28.4033	3018 18	15.8739	2121 16	6.5756	516 21	13.2499	1029 4	7.7771	870 1	—	—	
8	7	18	TIME (ATLANTIC)	HOOTIE & THE BLOWFISH	38.2293	3847 11	42.4320	4145 7	18.0583	2251 14	0.0841	15 —	16.7183	1211 1	2.7922	301 19	0.5764	69 —	
9	8	9	SITTIN' UP IN MY ROOM (ARISTA)	BRANDY	37.5223	3347 16	39.4958	3376 15	13.8915	1955 18	23.5943	1366 2	0.0365	26 —	—	—	—	—	
10	10	18	1979 (VIRGIN)	SMASHING PUMPKINS	37.3950	4068 9	35.5933	3942 10	17.6812	2252 13	0.2474	42 —	3.6690	208 35	0.0005	2 —	15.7969	1564 7	
11	11	7	FOLLOW YOU DOWN (A&M)	GIN BLOSSOMS	36.3397	4328 8	34.9631	4252 6	19.3005	2434 8	0.0580	10 —	8.5635	443 24	0.0081	5 —	8.4096	1436 10	
12	13	14	BE MY LOVER (RCA)	LA BOUCHE	36.2443	3594 15	36.9364	3642 14	24.6327	2817 5	11.4750	690 16	0.1177	85 —	0.0019	1 —	0.0170	1 —	
13	14	14	WONDER (ELEKTRA/EEG)	NATALIE MERCHANT	34.8202	3867 10	33.6440	3857 12	19.1370	2480 7	0.1031	15 —	11.2464	808 12	0.5843	173 27	3.7494	391 —	
14	9	19	ONE OF US (BLUE GORILLA/MERCURY)	JOAN OSBORNE	34.2791	3730 14	37.3818	3974 9	22.0515	2551 6	0.3883	29 —	9.1791	715 16	0.0627	32 —	2.5975	403 —	
15	15	16	THE WORLD I KNOW (ATLANTIC)	COLLECTIVE SOUL	33.9078	3741 13	32.8141	3720 13	17.3924	2364 11	0.0670	13 —	7.1916	412 25	0.0386	20 —	9.2182	932 26	
16	16	5	CLOSER TO FREE (SLASH/REPRISE)	BODEANS	32.9203	3105 18	30.6615	2999 19	19.4019	2181 15	0.0581	13 —	11.0804	666 18	0.3493	46 —	2.0306	199 —	
17	12	16	WONDERWALL (EPIC)	OASIS	32.8216	3806 12	34.7726	4119 8	17.3276	2356 12	0.0563	10 —	3.7665	264 32	0.0001	1 —	11.6711	1175 18	
18	17	24	BREAKFAST AT TIFFANY'S (RAINMAKER/INTERSCOPE)	DEEP BLUE SOMETHING	28.2964	2970 19	30.1209	3190 16	12.0423	1654 —	0.0603	14 —	13.7557	994 6	1.6220	147 30	0.8161	161 —	
19	24	12	HOOK (A&M)	BLUES TRAVELER	26.8057	3129 17	25.1719	3173 17	18.0733	2371 10	0.0771	11 —	6.1639	399 27	0.0065	8 —	2.4849	340 —	
20	21	7	NOT GON' CRY (ARISTA)	MARY J. BLIGE	26.2033	2039 31	26.8717	2005 35	4.2364	677 40	21.9669	1362 3	—	—	—	—	—	—	
21	23	8	I WANT TO COME OVER (ISLAND)	MELISSA ETHERIDGE	25.9536	2948 20	25.6913	2903 21	12.3497	1954 19	0.0601	11 —	12.2699	829 9	1.0226	109 —	0.2513	45 —	
22	26	9	ANYTHING (MJJ/550 MUSIC)	3T	25.2544	2506 23	24.7512	2470 24	15.2608	1669 20	9.6571	749 15	0.3180	84 —	0.0080	3 —	0.0105	1 —	
23	19	9	CALIFORNIA LOVE (DEATH ROW/INTERSCOPE)	2PAC	24.5410	1925 38	28.1646	2026 33	5.5818	752 34	18.9240	1169 4	—	—	—	—	0.0352	4 —	
24	22	35	AS I LAY ME DOWN (COLUMBIA)	SOPHIE B. HAWKINS	24.5225	2070 30	26.8433	2338 26	10.9169	909 —	0.2943	50 —	9.2390	735 15	4.0661	375 15	0.0062	1 —	
25	25	9	DON'T CRY (ZTT/WARNER BROS.)	SEAL	24.2275	2740 22	23.9466	2925 20	8.1011	1301 24	1.4886	105 —	11.2060	858 8	3.4087	471 9	0.0231	5 —	
26	27	27	TELL ME (EPIC)	GROOVE THEORY	23.9592	1831 43	25.3495	1923 40	10.2075	984 29	13.6854	792 11	0.0584	53 —	0.0004	1 —	0.0075	1 —	
27	28	39	KISS FROM A ROSE (ZTT/SIRE/WARNER BROS.)	SEAL	23.2899	2015 34	23.5889	2092 30	7.2156	781 —	2.4935	175 —	8.3094	618 19	4.9704	392 12	0.3010	49 —	
28	38	2	KILLING ME SOFTLY (RUFFHOUSE/COLUMBIA)	FUGEES	22.6169	903 88	19.6781	623 128	0.0536	10 —	22.5633	893 7	—	—	—	—	—	—	
29	31	44	RUN-AROUND (A&M)	BLUES TRAVELER	22.1099	1971 36	21.8218	2020 34	6.9954	790 —	2.3808	157 —	11.3016	768 14	—	—	1.4321	256 —	
30	29	37	ONLY WANNA BE WITH YOU (ATLANTIC)	HOOTIE & THE BLOWFISH	21.8014	1874 41	22.3538	1917 42	7.0585	778 —	0.2266	7 —	9.9566	708 17	4.0408	309 18	0.5189	72 —	
31	20	21	EXHALE (SHOOP SHOOP) (ARISTA)	WHITNEY HOUSTON	21.6180	2342 25	27.4086	2826 23	9.9360	1102 26	5.1274	455 23	3.1513	401 26	3.3912	381 14	0.0121	3 —	
32	30	33	ROLL TO ME (A&M)	DEL AMITRI	21.3408	2029 33	22.0852	2165 29	6.6909	896 —	0.0098	3 —	10.8764	814 10	3.2691	237 —	0.4946	79 —	
33	39	30	FANTASY (COLUMBIA)	MARIAH CAREY	20.8855	1686 48	21.5271	1854 45	7.8060	837 —	9.6430	518 —	3.2330	268 —	0.2035	63 —	—	—	
34	36	2	FEELS SO GOOD (SHOW ME YOUR LOVE) (GROOVE NATION/UNIVERSAL)	LINA SANTIAGO	20.7293	1422 57	21.4433	1400 61	6.1998	576 —	14.5279	845 8	—	—	—	—	0.0016	1 —	
35	32	34	TIL I HEAR IT FROM YOU (A&M)	GIN BLOSSOMS	20.1081	1881 40	21.3785	1943 38	5.6092	714 —	2.5605	200 —	11.1189	808 11	—	—	0.8195	159 —	
36	REENTRY		IN THE MEANTIME (HIFI/SIRE/EEG)	SPACEHOG	19.7863	2422 24	18.7099	2437 25	4.4506	522 —	—	—	0.0038	2 —	0.0138	3 —	15.3181	1895 2	
37	35	4	SANTA MONICA (WATCH THE WORLD DIE) (TIM KERR/CAPITOL)	EVERCLEAR	19.4748	2034 32	20.3494	2064 32	2.7973	505 —	—	—	—	—	—	—	16.6775	1529 8	
38	34	31	BACK FOR GOOD (ARISTA)	TAKE THAT	19.4212	1828 44	20.5348	1930 39	4.3999	497 —	—	—	9.0137	771 13	6.0076	560 5	—	—	
39	REENTRY		BEFORE YOU WALK OUT OF MY LIFE (ROWDY/ARISTA)	MONICA	19.4191	1537 53	18.6632	1558 56	4.7476	730 37	14.6355	776 12	0.0255	30 —	—	—	0.0105	1 —	
40	NEW		BIG ME (ROSWELL/CAPITOL)	FOO FIGHTERS	18.6362	2156 28	17.5489	1965 37	2.7937	197 —	—	—	1.3029	76 —	—	—	14.5396	1883 3	

Records showing an increase in audience over the previous week, regardless of chart movement. Rankings by format (on right side of this page) correspond to 40-position charts printed in this week's Monitor (30 positions for adult contemporary); therefore rankings do not exist for recurrences and records below No. 40 (No. 30 for adult contemporary). Audience computed by cross-referencing exact times of airplay with Arbitron listener data. © 1996, Billboard/BPI Communications.



voice of the beehive

Already on:
KQIZ **KQID** **KHFI**
KHTQ **KCHX** **WMGI**
KHOM **WWCK**

Scary Kisses

On your desk now

Paul "Cubby" Bryant — KRBE/Houston:

"Not even a month on the air here at KRBE and Scary Kisses is already pulling down Top 10 phones consistently. Houston is definitely 'Voicing' their opinion on the Beehive...they love it!"

One of the most added records at Top 40!

Contact: René Magallon/Discovery Records 800-377-9620, ext. 214 • e-mail: info@discoveryrec.com





HEAVY!!

25 PLAYS



ADD!

BREAKING AT:

- | | | |
|------|------|------|
| Z100 | WKBQ | WGTZ |
| KROQ | KXPX | WYKS |
| WBCN | WKSS | KSMB |
| Q99 | WRQK | WSSX |
| XHRM | WJET | WABB |
| WMMS | WRFY | WKXJ |
| WRCX | WKDD | WQXY |
| WZJM | KBBT | KTEG |
| WNEW | WPST | WMMR |
| Y100 | WXLK | 89X |
| Q104 | KHTQ | WWXM |
| KHTO | KYSR | WEQX |
| WWST | WDRE | WWCK |

lenny
kravitz
can't get
you
off my
mind

SOUNDCAN REACTING EVERYWHERE IT'S PLAYED!
SEE LENNY ON THE H.O.R.D.E. TOUR THIS SUMMER!

from the new album *Circus*.
Produced by Lenny Kravitz.
Representation: Craig Fruin
and Howard Kaufman/HK Management
©1996 Virgin Records America, Inc.



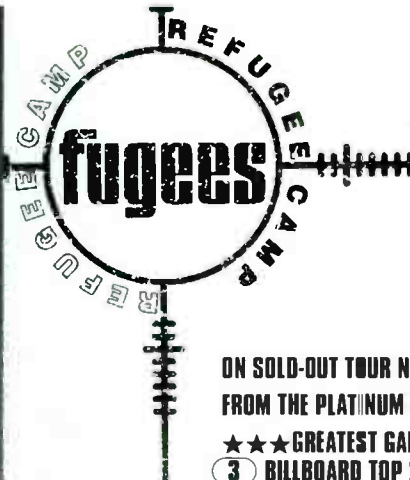
MAINSTREAM

THIS WEEK	LAST WEEK	WKS. ON CHART	TITLE/LABEL/DISTRIBUTING LABEL	ARTIST	DETECTIONS		
					TW	LW	
			★★★★ No. 1 ★★★★★				
①	3	7	IRONIC MAVERICK/REPRISE	ALANIS MORISSETTE	3616	3175	
			1 week at No. 1				
②	1	18	MISSING ATLANTIC	EVERYTHING BUT THE GIRL	3431	3417	
③	2	13	NOBODY KNOWS LAFACE/ARISTA	THE TONY RICH PROJECT	3355	3347	
4	4	26	NAME METAL BLADE/WARNER BRDS.	GOO GOO DOLLS	2927	2936	
⑤	5	16	BE MY LOVER RCA	LA BOUCHE	2817	2815	
6	6	18	ONE OF US BLUE GDRILLA/MERCURY	JOAN OSBORNE	2551	2812	
7	8	15	WONDER ELEKTRA/EEG	NATALIE MERCHANT	2480	2488	
⑧	12	7	FOLLOW YOU DOWN A&M	GIN BLOSSOMS	2434	2341	
⑨	16	5	ALWAYS BE MY BABY CDLUMBIA	MARIAH CAREY	2403	1991	
10	9	16	HOOK A&M	BLUES TRAVELER	2371	2444	
⑪	13	15	THE WORLD I KNOW ATLANTIC	COLLECTIVE SOUL	2364	2335	
12	10	11	WONDERWALL EPIC	OASIS	2356	2421	
⑬	15	9	1979 VIRGIN	SMASHING PUMPKINS	2252	2078	
14	7	21	TIME ATLANTIC	HOOTIE & THE BLOWFISH	2251	2490	
⑮	14	9	CLOSER TO FREE SLASH/REPRISE	BODEANS	2181	2138	
			★★★★ AIRPOWER ★★★★★				
⑯	25	4	BECAUSE YOU LOVED ME 550 MUSIC	CELINE DION	2121	1289	
17	11	21	ONE SWEET DAY COLUMBIA	MARIAH CAREY & BOYZ II MEN	1964	2371	
⑱	18	7	SITTIN' UP IN MY ROOM ARISTA	BRANDY	1955	1923	
⑲	17	10	I WANT TO COME OVER ISLAND	MELISSA ETHERIDGE	1954	1940	
⑳	21	10	ANYTHING MJJ/550 MUSIC	3T	1669	1609	
21	20	6	LUCKY LOVE ARISTA	ACE OF BASE	1616	1618	
22	23	6	ONLY LOVE (THE BALLAD OF SLEEPING BEAUTY) COLUMBIA	SOPHIE B. HAWKINS	1445	1473	
⑳	27	5	PEACHES COLUMBIA	THE PRESIDENTS OF THE UNITED STATES OF AMERICA	1329	1258	
24	22	15	DON'T CRY ZTT/WARNER BRDS.	SEAL	1301	1515	
⑳	31	3	EVERYTHING FALLS APART COLUMBIA	DOG'S EYE VIEW	1140	981	
26	24	20	EXHALE (SHOOP SHOOP) ARISTA	WHITNEY HOUSTON	1102	1387	
27	26	8	OH VIRGINIA EMI	BLESSID UNION OF SOULS	1101	1277	
28	28	8	GLYCERINE TRAUMA/INTERSCOPE	BUSH	1011	1072	
29	30	19	TELL ME EPIC	GROOVE THEORY	984	1021	
⑳	34	4	WHO DO U LOVE ARISTA	DEBORAH COX	942	800	
31	29	24	HAND IN MY POCKET MAVERICK/REPRISE	ALANIS MORISSETTE	889	1063	
⑳	36	2	INSENSITIVE A&M	JANN ARDEN	812	730	
⑳	NEW		GIVE ME ONE REASON ELEKTRA/EEG	TRACY CHAPMAN	764	544	
⑳	37	4	CALIFORNIA LOVE DEATH ROW/INTERSCOPE	2PAC (FEAT. DR. DRE AND ROGER TROUTMAN)	752	702	
35	32	23	DIGGIN' ON YOU LAFACE/ARISTA	TLC	748	898	
⑳	38	2	JUST A GIRL TRAUMA/INTERSCOPE	NO DOUBT	733	689	
37	35	8	BEFORE YOU WALK OUT OF MY LIFE ROWDY/ARISTA	MONICA	730	747	
⑳	NEW		CHAINS EPIC	TINA ARENA	723	245	
39	33	25	GOOD INTENTIONS COLUMBIA/REPRISE	TOAD THE WET SPROCKET	690	867	
⑳	40	2	NOT GON' CRY ARISTA	MARY J. BLIGE	677	648	

RHYTHM-CROSSOVER

THIS WEEK	LAST WEEK	WKS. ON CHART	TITLE/LABEL/DISTRIBUTING LABEL	ARTIST	DETECTIONS		
					TW	LW	
			★★★★ No. 1 ★★★★★				
1	1	9	ALWAYS BE MY BABY COLUMBIA	MARIAH CAREY	1431	1434	
			2 weeks at No. 1				
2	2	16	SITTIN' UP IN MY ROOM ARISTA	BRANDY	1366	1429	
③	3	14	NOT GON' CRY ARISTA	MARY J. BLIGE	1362	1355	
4	4	11	CALIFORNIA LOVE DEATH ROW/INTERSCOPE	2PAC (FEAT. DR. DRE AND ROGER TROUTMAN)	1169	1322	
5	5	16	NOBODY KNOWS LAFACE/ARISTA	THE TONY RICH PROJECT	1159	1244	
6	6	20	MISSING ATLANTIC	EVERYTHING BUT THE GIRL	915	978	
⑦	16	4	KILLING ME SOFTLY RUFFHOUSE/CDLUMBIA	FUGEES	893	623	
8	7	10	FEELS SO GOOD (SHOW ME YOUR LOVE) GROOVE NATIDN/UNIVERSAL	LINA SANTIAGO	845	896	
9	8	21	HEY LOVER DEF JAM/RAL/ISLAND	LL COOL J	842	862	
⑩	12	8	DOWN LOW (NOBODY HAS TO KNOW) JIVE	R. KELLY FEAT. RONALD ISLEY	817	749	
11	9	31	TELL ME EPIC	GROOVE THEORY	792	855	
12	11	24	BEFORE YOU WALK OUT OF MY LIFE ROWDY/ARISTA	MONICA	776	782	
⑬	17	3	1, 2, 3, 4 (SUMPIN' NEW) TOMMY BOY	COOLIO	759	601	
⑭	14	8	LADY EMI	D'ANGELO	758	659	
15	10	26	ANYTHING MJJ/550 MUSIC	3T	749	805	
16	13	21	BE MY LOVER RCA	LA BOUCHE	690	733	
17	15	24	ONE SWEET DAY COLUMBIA	MARIAH CAREY & BOYZ II MEN	643	717	
⑱	21	11	DOIN IT DEF JAM/RAL/ISLAND	LL COOL J	557	517	
⑲	20	10	WHO DO U LOVE ARISTA	DEBORAH COX	536	525	
20	18	6	ALL THE THINGS (YOUR MAN WON'T DO) ISLAND	JOE	529	538	
⑳	NEW		BECAUSE YOU LOVED ME 550 MUSIC	CELINE DION	516	224	
22	19	25	SET U FREE STRICTLY RHYTHM	PLANET SOUL	494	551	
23	22	22	EXHALE (SHOOP SHOOP) ARISTA	WHITNEY HOUSTON	455	478	
24	23	7	DO YOU WANT TO SO SO DEF/COLUMBIA	XSCAPE	431	439	
⑳	30	6	LUCKY LOVE ARISTA	ACE OF BASE	354	338	
26	28	4	FU-GEE-LA RUFFHOUSE/COLUMBIA	FUGEES	342	344	
⑳	34	2	RELEASE ME UPSTAIRS	ANGELINA	340	303	
⑳	38	2	I'M GETTING USED TO YOU EMI LATIN/EMI	SELENA	337	264	
29	33	26	DIGGIN' ON YOU LAFACE/ARISTA	TLC	333	355	
30	27	4	I WILL SURVIVE RCA	CHANTAY SAVAGE	323	346	
31	31	9	NO ONE ELSE BAD BOY/ARISTA	TOTAL	303	329	
32	29	6	KEEP TRYIN' EPIC	GROOVE THEORY	297	340	
33	24	9	EVERYDAY & EVERYNIGHT LOUD/RCA	YVETTE MICHELLE	295	391	
⑳	NEW		YOU'RE THE ONE RCA	SWV	293	39	
35	25	14	TONITE'S THA NIGHT RUFFHOUSE/COLUMBIA	KRIS KROSS	275	381	
⑳	39	5	TAKE A LOOK HOLLYWOOD	J'SON	263	256	
⑳	NEW		SWEET DREAMS RCA	LA BOUCHE	256	189	
38	35	3	LA FAMILIA RUTHLESS/RELATIVITY	FROST	251	268	
39	37	25	SEXUAL HEALING S.O.S./ZOO	MAX-A-MILLION	251	296	
40	36	3	AIN'T NOBODY WORK	DIANA KING	245	266	

Records showing an increase in detections over the previous week, regardless of chart movement. A record which has been on either chart for more than 20 weeks will not receive a bullet, even if it registers an increase in detections. Airpower awarded to those records which attain 1500 detections (mainstream) or 600 detections (rhythm) for the first time. If two records are tied in number of plays, the record being played on more stations is placed first. Records below the top 20 are removed from the chart after 26 weeks.



Fu-Gee-La

Killing Me Softly

ACTIVE HEAVY

28 - 26 TOP 40/RHYTHM MONITOR
HOT 100 AUDIENCE UP FROM 9 MILLION TO 10 MILLION!

★★★GREATEST GAINER★★★
16 - 7 TOP 40 RHYTHM MONITOR

HOT 100 AUDIENCE UP FROM 19 MILLION TO 23 MILLION

ON SOLD-OUT TOUR NOW... LOS ANGELES, CHICAGO, SAN FRANCISCO, DALLAS, DETROIT, PHILADELPHIA
FROM THE PLATINUM ALBUM "THE SCORE"

★★★GREATEST GAINER★★★
3 BILLBOARD TOP 200 ALBUM CHART

Executive Producer: Prakazrel "Pras"
Co-Executive Producers: Wyclef, Lauryn Hill

RUFF HOUSE
COLUMBIA