

# TOP 40 AIRPLAY Monitor

• We Listen To Radio •

April 28, 1995 \$ 4.95 Volume 3 • No. 18

## TOP 40 HIGHLIGHTS

### MAINSTREAM

#1

**DIONNE FARRIS**

*I Know* (COLUMBIA)

★★★ AIRPOWER ★★★

DAVE MATTHEWS BAND • *What Would You Say* (RCA)

### NEW RELEASES

JOANNE FARRELL • *All I Wanna Do* (BIG BEAT/ATLANTIC)

### RHYTHM-CROSSOVER

#1

**MONTELL JORDAN**

*This Is How We Do It* (PMP/IRAL/ISLAND)

★★★ AIRPOWER ★★★

SOUL FOR REAL • *Every Little Thing I Do* (UPTOWN/MCA)

### NEW RELEASES

JOANNE FARRELL • *All I Wanna Do* (BIG BEAT/ATLANTIC)

SPANISH FLY • *Crimson & Clover* (UPSTAIRS/WARNER BROS.)

### ADULT

#1

**MARTIN PAGE**

*In The Hous Of Stone and Light* (MERCURY)

★★★ AIRPOWER ★★★

BLESSID UNION OF SOULS • *I Believe* (EMI)

FIREHOUSE • *I Live My Life For You* (EPIC)

### NEW RELEASES

EAGLES • *Learn To Be Still* (Geffen)

PETER, PAUL & MARY • *Home Is Where The Heart Is* (WARNER BROS.)

JON SECADA • *Where Do I Go From You* (SBK/EMI)

## Top 40 Airplay Monitor Goes Modern Rock

Over the last three years, the top 40 format has looked increasingly modern, and this week the Top 40 Airplay Monitor will also.

In an acknowledgment of the continuing growth of the modern rock format and its current influence on top 40 radio, Top 40 Airplay Monitor this week unveils its Modern Rock Airplay page. This page will feature the top 20 from the Modern Rock Airplay chart, which has previously appeared only in the Rock Airplay Monitor, as well as Power Playlists from the format's heavyweight stations. These new features can be found this week on page 19. (The full Modern Rock Airplay chart and Power Playlists will continue to appear in the Rock Airplay Monitor.)

The Modern Rock Airplay page is part of Top 40 Airplay Monitor's ongoing efforts to give the industry as much information in one place as possible. We'll be adding other features in the months to come, and we appreciate your feedback at 212-536-5264 and your continued support. **SEAN ROSS**

PUBLISHER: MICHAEL ELLIS  
EDITOR: SEAN ROSS  
TOP 40 ADULT CHART MANAGER: STEVEN GRAYBOW  
CHART PRODUCTION MANAGER: MICHAEL CUSSON  
ASST. CHART PRODUCTION MANAGER: PAUL PAGE  
EDITORIAL PRODUCTION MANAGER: BARRY BISHN  
ASSOC. EDITORIAL PRODUCTION MANAGER: MARCIA REPNISKI  
EDITORIAL PRODUCTION: MARIO SIMSUNTO, MORRIS KUEGEMAN,  
DAVE WESTFALL  
ADVERTISING PRODUCTION MANAGER: LYDIA MIKLUKO  
ADVERTISING PRODUCTION ASST.: ONDIEF VIESS  
ADVERTISING ART DIRECTOR: RAY CARLSON

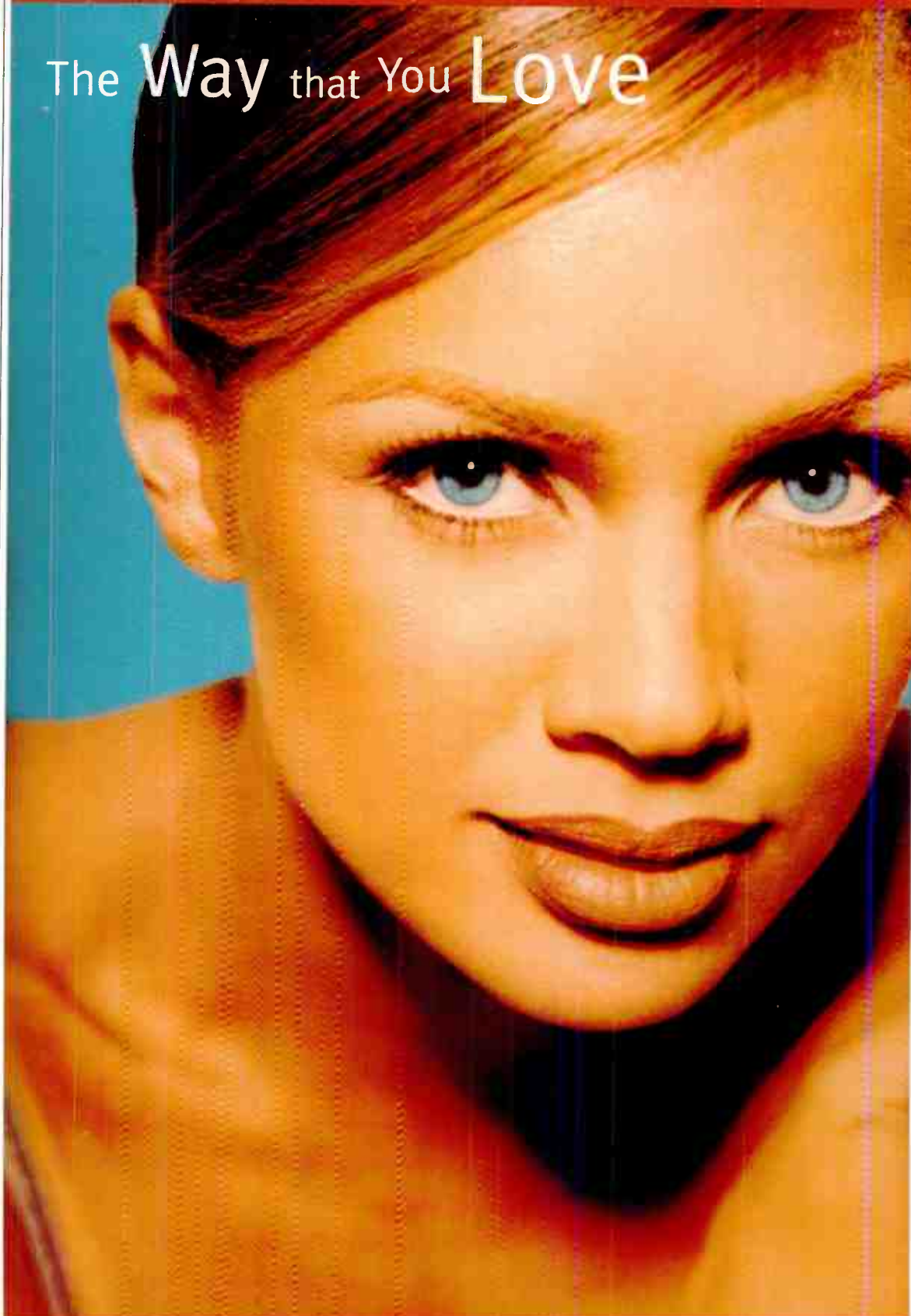
NATIONAL ADVERTISING MANAGER: JOHN GUYNN  
ADVERTISING SALES: NANCY BOWMAN, JACK FULMER  
ADVERTISING SERVICES MGR.: MICHELE JACANGELO  
SALES ASSISTANTS: EVE VYN ASZODI, ERICA BENGTSON,  
JEF LESTING, ALFIE ZIGMAN  
EDITORIAL ADVISER: TIMOTHY WHITE  
PRODUCTION DIRECTOR: MARIE GOMPERT  
DIRECTOR OF MARKETING: ELISA TOMASETTI  
CIRCULATION MANAGER: JEANNE JAMIN  
DIRECTOR OF RESEARCH: JANE RAMZMAN

©1995 BF Communications, 1515 Broadway, New York, NY 10036  
212-536-6037 Fax: 212-536-6037 For subscription call 800-722-2346

Billboard Music Group  
PRESIDENT: HOWARD LANDER

Vanessa Williams

The Way that You Love



The next single  
Now Over 1.5 Million Listeners & over 290 Plays!  
they love it at:  
WXKS Z-90 WHHH WKSS  
#1 most added Rhythmic  
#2 most added Top 40  
from the Platinum-plus  
album, *The Sweetest Days*.

Produced by Gerry Brown and Vanessa Williams

Co-Produced by J Dibos with additional mixes by Gerry Brown and Rodney Jerkins

Executive Producer: Ed Eckstine • Management: Hervey & Company







# Congratulates all our



*Second Place* **\$ 7,500**

## KEITH NAFTALY KKBT / Los Angeles, CA

*"When I started playing AIR thirteen years ago, I was a wide-eyed, wanna-be-new-waver with a competitive spirit and an over-the-top, intense passion for music. I thought AIR was the most innovative concept ever invented, and I played to win. A lot has changed in my world over the years, but my love for hit music has remained pure and constant. AIR has kept my ears on track and in synch with the evolution of cutting edge pop music. My AIR victories will always represent the most positive, fulfilling "highs" of my radio career. Thanks Bruce and Jonas for EVERYTHING! Stay real."*

**THIRD PLACE \$5,000**



### PETE JONES

HOT105 / Modesto-Merced, CA

*"I love AIR! Staying on top of new music is absolutely critical and AIR helps keep me plugged-in with solid information. This is a competitive business, and AIR gives me the opportunity to compete with the very best. Thanks Bob and the entire AIR staff!"*

**FOURTH PLACE \$3,000**



### RUSS ALLEN

92Q / Baltimore, MD

*"I can't believe this!!! Mad thanks to Bob and everyone at AIR. You people put the music FIRST the way it should be."*

**FIFTH PLACE \$2,500**



### THE KOZMAN

KKXX / Bakersfield, CA

*"It's nothing less than an honor to be here with today's great programmers. AIR has been a tremendous tool for us at KKXX - nothing compares to it. The research provided is INCREDIBLE! Bob Brady, you're the man!"*

**SIXTH PLACE \$2,000**



### M.D. THROB

Formerly at  
WPGC / Washington, D.C.

*"Every week AIR gives me extra info on what will be some of the hottest records in the country. I couldn't do what I do without it. One love!"*

**SEVENTH PLACE \$1,750**



### CHARLES CHAVEZ

KTFM / San Antonio, TX

*"The most important part of the AIR competition is listening to new music. A lot of records that may have been lost in the stack were given a serious listen. Bob makes sure I spend time with each record. AIR is a very valuable tool."*

**EIGHTH PLACE \$1,500**



### JAY STEVENS

WPGC / Washington, D.C.

*"After all these years, AIR continues to be the best tool in the industry for connecting with the hits. Thanks again to Bruce, Jonas and everyone at AIR. I'm proud to have once again placed in the Top 10."*

**NINTH PLACE \$1,250**



### JOEY ARBAGEY

KMEL / San Francisco, CA

*"To have placed in the Top 10 in my first three competitions is truly an honor. AIR is 'the source' for the best, most accurate music information anywhere. Without Bruce my job would be far more tedious...Thanks for staying true to the streets and to the music."*

**TENTH PLACE \$1,000**



### MICHAEL NEWMAN

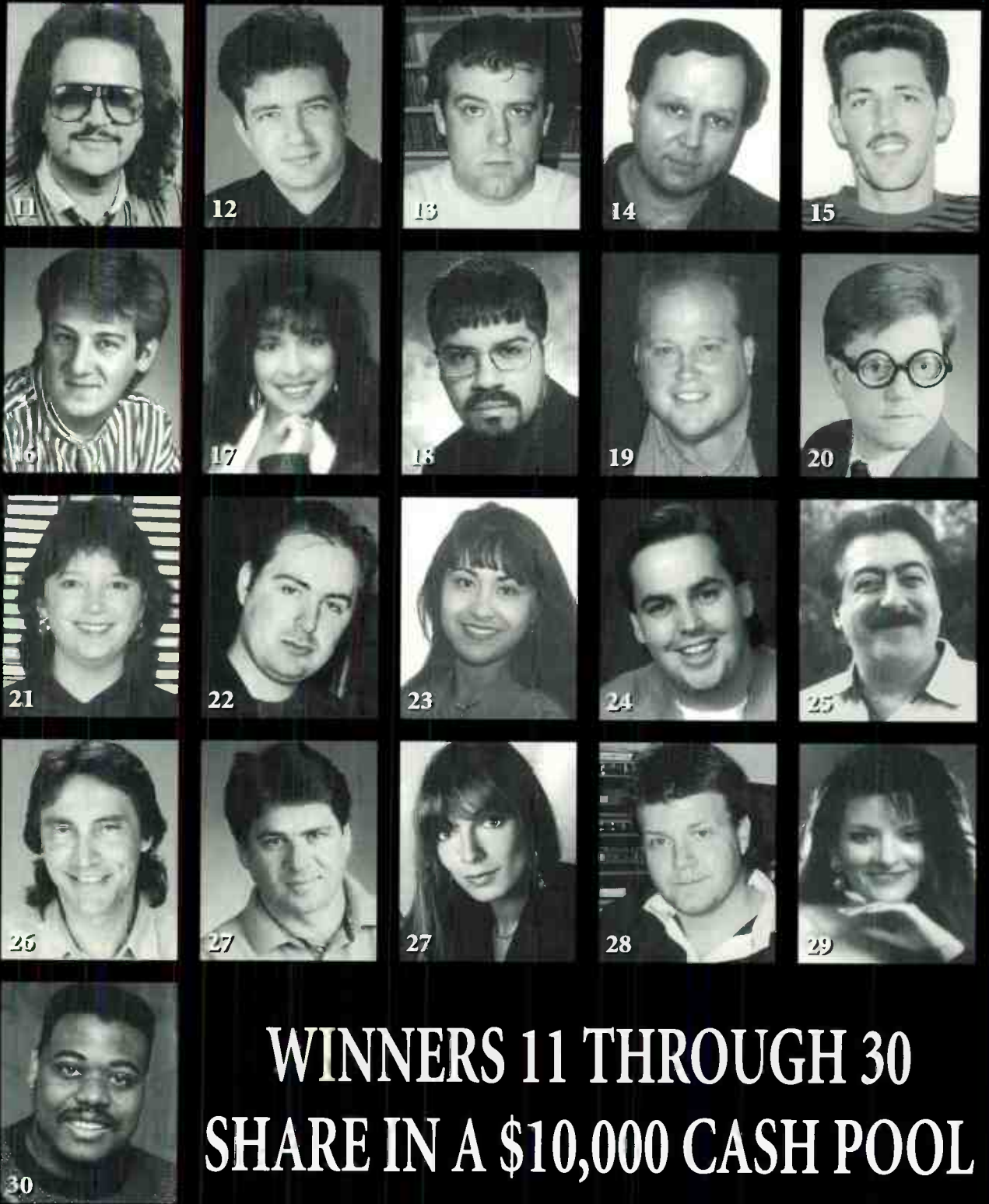
KDON / Salinas-Monterey, CA

*"Again, it's wonderful to be among the winners. In continuing to give honest, accurate and in-depth information, AIR forces programmers like myself to think and re-think each and every record on their Priority list. Thanks again Bruce and everyone at AIR...now what's it going to take to get on the front page?"*



# Rhythm-Crossover Winners

- 11** ALBIE DEE  
WPGC / Washington, D.C.
- 12** CARL FRYE  
WHHH / Indianapolis, IN
- 13** CAT COLLINS  
WJMN / Boston, MA
- 14** MICHAEL KIRBY  
KFFM / Yakima, WA
- 15** ALLEN CHASE - Formerly at  
HOT105 / Modesto-Merced, CA
- 16** JEFF KAPUGI  
WFLZ / Tampa, FL
- 17** CHARLIE MAXX  
KZFM / Corpus Christi, TX
- 18** HAROLD AUSTIN  
KKBT / Los Angeles, CA
- 19** THE JANITOR  
KTFM / San Antonio, TX
- 20** TOM STEELE  
WFLZ / Tampa, FL
- 21** LISA ADAMS  
KFFM / Yakima, WA
- 22** ROB SCORPIO  
KBXX / Houston, TX
- 23** LUCY B.  
Q105 / Oxnard-Ventura, CA
- 24** BRUCE ST. JAMES  
PWR106 / Los Angeles, CA
- 25** ROOSTER RHODES  
Q105 / Oxnard-Ventura, CA
- 26** SCOTT WHEELER  
WHHH / Indianapolis, IN
- 27** B.J. HARRIS  
WFLZ / Tampa, FL
- tie** TRACY CLOHERTY  
HOT97 / New York, NY
- 28** MARK ADAMS  
B95 / Fresno, CA
- 29** SONIA JIMENEZ  
KGGI / Riverside, CA
- 30** KEVIN "KOOLIN" FOX  
WIBB / Macon, GA



**WINNERS 11 THROUGH 30  
SHARE IN A \$10,000 CASH POOL**

## 2nd Half WINNERS

FIRST PLACE \$2,500

CADILLAC JACK

WJMN / Boston, MA

SECOND PLACE \$1,500

CAMILLE CASHWELL

92Q / Baltimore, MD

THIRD PLACE \$1,000

RUSS ALLEN

92Q / Baltimore, MD

*AIR's current Rhythm-Crossover Competition, with a Grand Prize of a 1995 BMW 318i Convertible, is currently underway. Winners will be announced in November 1995.*



# Monitor TOP 40 AIRPLAY



## DETECTIONS

APRIL 17-23, 1995

Compiled from a national sample of airplay supplied by Broadcast Data Systems' Radio Track service to Top 40 Airplay Monitor. 78 top 40/mainstream and 33 top 40/rhythm-crossover stations are electronically monitored 24 hours a day, 7 days a week. Songs ranked by number of detections. ©1994, Billboard/BPI Communications.

| THIS WEEK | LAST WEEK | WKS. ON CHART | TOP 40/MAINSTREAM                        |                        | DETECTIONS |      |  |
|-----------|-----------|---------------|------------------------------------------|------------------------|------------|------|--|
|           |           |               | TITLE/LABEL/DISTRIBUTING LABEL           | ARTIST                 | TW         | LW   |  |
|           |           |               | *** No. 1 ***                            |                        |            |      |  |
| 1         | 1         | 15            | I KNOW COLUMBIA 6 weeks at No. 1         | DIONNE FARRIS          | 3496       | 3555 |  |
| 2         | 3         | 11            | I BELIEVE EMI                            | BLESSID UNION OF SOULS | 2892       | 2801 |  |
| 3         | 2         | 19            | WHEN I COME AROUND REPRISE               | GREEN DAY              | 2785       | 2830 |  |
| 4         | 4         | 15            | STRONG ENOUGH A&M                        | SHERYL CROW            | 2615       | 2766 |  |
| 5         | 6         | 14            | HOLD ON ATLANTIC                         | JAMIE WALTERS          | 2587       | 2627 |  |
| 6         | 5         | 12            | RUN AWAY ARISTA                          | REAL MCCOY             | 2530       | 2694 |  |
| 7         | 8         | 5             | LET HER CRY ATLANTIC                     | HOOTIE & THE BLOWFISH  | 2103       | 1876 |  |
| 8         | 10        | 28            | HOLD MY HAND ATLANTIC                    | HOOTIE & THE BLOWFISH  | 1912       | 1885 |  |
| 9         | 11        | 13            | IN THE HOUSE OF STONE AND LIGHT MERCURY  | MARTIN PAGE            | 1845       | 1952 |  |
| 10        | 9         | 7             | TELL ME WHEN EASTWEST/EEG                | THE HUMAN LEAGUE       | 1810       | 1922 |  |
| 11        | 17        | 7             | CAN'T STOP LOVIN' YOU WARNER BROS.       | VAN HALEN              | 1800       | 1667 |  |
| 12        | 16        | 8             | LIGHTNING CRASHES RADIOACTIVE/MCA        | LIVE                   | 1759       | 1539 |  |
| 13        | 18        | 6             | RED LIGHT SPECIAL LAFACE/ARISTA          | TLC                    | 1737       | 1616 |  |
| 14        | 14        | 10            | I LIVE MY LIFE FOR YOU EPIC              | FIREHOUSE              | 1688       | 1717 |  |
| 15        | 7         | 21            | TAKE A BOW MAVERICK/SIRE/WARNER BROS.    | MADONNA                | 1605       | 1948 |  |
| 16        | 13        | 35            | ANOTHER NIGHT ARISTA                     | REAL MCCOY             | 1543       | 1735 |  |
| 17        | 12        | 34            | YOU GOTTA BE 550 MUSIC                   | DES'REE                | 1540       | 1793 |  |
|           |           |               | *** AIRPOWER ***                         |                        |            |      |  |
| 18        | 22        | 5             | WHAT WOULD YOU SAY RCA                   | DAVE MATTHEWS BAND     | 1507       | 1237 |  |
| 19        | 15        | 9             | THANK YOU MOTOWN                         | BOYZ II MEN            | 1501       | 1705 |  |
| 20        | 19        | 20            | CREEP LAFACE/ARISTA                      | TLC                    | 1431       | 1574 |  |
| 21        | 20        | 15            | BETTER MAN EPIC                          | PEARL JAM              | 1418       | 1493 |  |
| 22        | 33        | 3             | WATER RUNS DRY MOTOWN                    | BOYZ II MEN            | 1382       | 909  |  |
| 23        | 21        | 8             | BELIEVE ROCKET/ISLAND                    | ELTON JOHN             | 1367       | 1371 |  |
| 24        | 24        | 5             | NO MORE "I LOVE YOU'S" ARISTA            | ANNIE LENNOX           | 1214       | 1210 |  |
| 25        | 30        | 5             | RUN-AROUND A&M                           | BLUES TRAVELER         | 1205       | 1016 |  |
| 26        | 25        | 25            | EVERY DAY OF THE WEEK GIANT              | JADE                   | 1186       | 1227 |  |
| 27        | 23        | 12            | IF YOU LOVE ME MJJ/EPIC                  | BROWNSTONE             | 1183       | 1251 |  |
| 28        | 31        | 4             | CANDY RAIN UPTOWN/MCA                    | SOUL FOR REAL          | 1175       | 1097 |  |
| 29        | 36        | 2             | HAVE YOU EVER REALLY LOVED A WOMAN? A&M  | BRYAN ADAMS            | 1132       | 858  |  |
| 30        | 26        | 22            | GET READY FOR THIS RADIKAL/CRITIQUE      | 2 UNLIMITED            | 1118       | 1176 |  |
| 31        | 35        | 2             | TOTAL ECLIPSE OF THE HEART CRITIQUE      | NICKI FRENCH           | 1058       | 839  |  |
| 32        | 28        | 24            | THE RHYTHM OF THE NIGHT EASTWEST/EEG     | CORONA                 | 1020       | 1108 |  |
| 33        | 27        | 14            | IF I WANTED TO ISLAND                    | MELISSA ETHERIDGE      | 982        | 1154 |  |
| 34        | 32        | 7             | COTTON EYE JOE BATTERY/JIVE              | REDNEX                 | 966        | 1009 |  |
| 35        | 29        | 26            | ON BENDED KNEE MOTOWN                    | BOYZ II MEN            | 881        | 1050 |  |
| 36        | NEW       |               | FREAK LIKE ME MECCA DON/EASTWEST/EEG     | ADINA HOWARD           | 838        | 678  |  |
| 37        | 39        | 2             | DREAM ABOUT YOU EMPORIA WEST/THUMP       | STEVIE B               | 830        | 752  |  |
| 38        | RE-ENTRY  |               | BABY ATLANTIC                            | BRANDY                 | 804        | 776  |  |
| 39        | NEW       |               | FEEL SO HIGH 550 MUSIC                   | DES'REE                | 782        | 722  |  |
| 40        | 34        | 22            | YOU DON'T KNOW HOW IT FEELS WARNER BROS. | TOM PETTY              | 751        | 896  |  |

| THIS WEEK | LAST WEEK | WKS. ON CHART | TOP 40/RHYTHM-CROSSOVER                                    |                                      | DETECTIONS |      |  |
|-----------|-----------|---------------|------------------------------------------------------------|--------------------------------------|------------|------|--|
|           |           |               | TITLE/LABEL/DISTRIBUTING LABEL                             | ARTIST                               | TW         | LW   |  |
|           |           |               | *** No. 1 ***                                              |                                      |            |      |  |
| 1         | 1         | 10            | THIS IS HOW WE DO IT PMP/RAL/ISLAND 3 weeks at No. 1       | MONTELL JORDAN                       | 1614       | 1630 |  |
| 2         | 4         | 13            | FREAK LIKE ME MECCA DON/EASTWEST/EEG                       | ADINA HOWARD                         | 1289       | 1214 |  |
| 3         | 2         | 19            | RED LIGHT SPECIAL LAFACE/ARISTA                            | TLC                                  | 1220       | 1415 |  |
| 4         | 3         | 16            | CANDY RAIN UPTOWN/MCA                                      | SOUL FOR REAL                        | 1178       | 1262 |  |
| 5         | 5         | 12            | THIS LIL' GAME WE PLAY BIV 10/MOTOWN                       | SUBWAY (FEATURING 702)               | 1157       | 1143 |  |
| 6         | 6         | 16            | WATER RUNS DRY MOTOWN                                      | BOYZ II MEN                          | 964        | 877  |  |
| 7         | 7         | 16            | RUN AWAY ARISTA                                            | REAL MCCOY                           | 859        | 847  |  |
| 8         | 10        | 8             | I'D RATHER BE ALONE MCA                                    | IV XAMPLE                            | 823        | 787  |  |
| 9         | 11        | 27            | CREEP LAFACE/ARISTA                                        | TLC                                  | 798        | 765  |  |
| 10        | 15        | 11            | ASK OF YOU EPIC SOUNDTRAX/550 MUSIC                        | RAPHAEL SAADIQ                       | 773        | 701  |  |
| 11        | 9         | 17            | BABY ATLANTIC                                              | BRANDY                               | 765        | 818  |  |
| 12        | 8         | 19            | IF YOU LOVE ME MJJ/EPIC                                    | BROWNSTONE                           | 753        | 822  |  |
| 13        | 22        | 4             | SOMEONE TO LOVE YAB YUM/550 MUSIC                          | JON B. FEATURING BABYFACE            | 721        | 605  |  |
| 14        | 12        | 18            | I'M GOIN' DOWN UPTOWN/MCA                                  | MARY J. BLIGE                        | 716        | 731  |  |
| 15        | 14        | 14            | MOVE IT LIKE THIS TOMMY BOY                                | K7                                   | 713        | 715  |  |
| 16        | 18        | 8             | I'LL BE AROUND CHRYSALIS/EMI                               | RAPPIN' 4-TAY FEATURING THE SPINNERS | 678        | 651  |  |
| 17        | 19        | 11            | WATERFALLS LAFACE/ARISTA                                   | TLC                                  | 649        | 629  |  |
| 18        | 17        | 10            | DREAM ABOUT YOU EMPORIA WEST/THUMP                         | STEVIE B                             | 633        | 659  |  |
| 19        | 13        | 16            | BIG POPPA BAD BOY/ARISTA                                   | THE NOTORIOUS B.I.G.                 | 632        | 730  |  |
| 20        | 20        | 11            | NEVER FIND SOMEONE LIKE YOU RUFFHOUSE/COLUMBIA             | KEITH MARTIN                         | 603        | 621  |  |
| 21        | 23        | 8             | DEAR MAMA INTERSCOPE                                       | 2PAC                                 | 601        | 579  |  |
| 22        | 24        | 6             | SHY GUY WORK                                               | DIANA KING                           | 564        | 575  |  |
| 23        | 25        | 6             | JOY INTERSCOPE                                             | BLACKSTREET                          | 560        | 533  |  |
| 24        | 21        | 21            | TAKE A BOW MAVERICK/SIRE/WARNER BROS.                      | MADONNA                              | 553        | 615  |  |
| 25        | 27        | 7             | KEEP THEIR HEADS RINGIN' PRIORITY                          | DR. DRE                              | 546        | 523  |  |
|           |           |               | *** AIRPOWER ***                                           |                                      |            |      |  |
| 26        | 30        | 2             | EVERY LITTLE THING I DO UPTOWN/MCA                         | SOUL FOR REAL                        | 546        | 449  |  |
| 27        | 31        | 3             | I BELIEVE EMI                                              | BLESSID UNION OF SOULS               | 471        | 380  |  |
| 28        | 29        | 6             | CLOSE TO YOU CURB-EDEL                                     | FUN FACTORY                          | 446        | 477  |  |
| 29        | 39        | 2             | TOTAL ECLIPSE OF THE HEART CRITIQUE                        | NICKI FRENCH                         | 439        | 281  |  |
| 30        | 26        | 11            | THANK YOU MOTOWN                                           | BOYZ II MEN                          | 435        | 523  |  |
| 31        | 37        | 2             | GIVE IT 2 YOU SO SO DEF/WORK                               | DA BRAT                              | 429        | 318  |  |
| 32        | 28        | 24            | BEFORE I LET YOU GO INTERSCOPE                             | BLACKSTREET                          | 409        | 507  |  |
| 33        | 32        | 12            | DADDY'S HOME UPSTAIRS/WARNER BROS.                         | SPANISH FLY                          | 396        | 373  |  |
| 34        | 38        | 3             | CAN'T YOU SEE TOMMY BOY                                    | TOTAL FEAT. THE NOTORIOUS B.I.G.     | 376        | 311  |  |
| 35        | 33        | 4             | I KNOW COLUMBIA                                            | DIONNE FARRIS                        | 362        | 365  |  |
| 36        | 35        | 16            | YOU GOTTA BE 550 MUSIC                                     | DES'REE                              | 344        | 329  |  |
| 37        | NEW       |               | I WISH SUNSHINE/SCOTTI BROS.                               | SKEE-LO                              | 330        | 247  |  |
| 38        | NEW       |               | I'LL BE THERE.../ALL I NEED... DEF JAM/RAL/ISLAND          | METHOD MAN/M.J. BLIGE                | 311        | 268  |  |
| 39        | NEW       |               | DON'T TAKE IT PERSONAL (JUST ONE OF DEM DAYS) ROWDY/ARISTA | MONICA                               | 311        | 122  |  |
| 40        | 34        | 15            | FAT BOY S.O.S./ZOO                                         | MAX-A-MILLION                        | 284        | 346  |  |

Records showing an increase in detections over the previous week, regardless of chart movement. A record below the top 20 which has been on either chart for more than 20 weeks will not receive a bullet, even if it registers an increase in detections. Airpower awarded to those records which attain 1500 detections (mainstream) or 500 detections (rhythm) for the first time. If two records are tied in number of plays, the record being played on more stations is placed first. Records below the top 20 are removed from the charts after 26 weeks.

# FRIDAY... THANK YOU!!!

PRIORITY 10 YEAR ANNIVERSARY
PRIORITY FILMS
NEW LINE CINEMA
© 1995 PRIORITY RECORDS