





*The Smashing Pumpkins*

- I OF THE MOURNING -



*the new song from the gold album MACHINA / THE MACHINES OF GOD*  
PRODUCED by FLOOD and BILLY CORGAN

[www.smashingpumpkins.com](http://www.smashingpumpkins.com) & [www.virginrecords.com](http://www.virginrecords.com)

© 2000 Virgin Records America, Inc. and the Smashing Pumpkins

**GOING FOR ADDS NOW!**

**BEFORE THE BOX:**

**Q101  
WOXY  
WPGU**

## U.K. Tops U.S. In Latest InfoStream Ratings

With the addition of more portal sites, including a number of European streamers, Arbitron's new InfoStream Webcast Ratings for January gave a new No. 1. The U.K.-based rock AC **Virgin Radio** was the top-ranked station in terms of cumulative audience, with 173,200. Former No. 1 station, triple-A **KPIG** Monterey, Calif., was sec-



ond, with 80,800 listeners a month. Other stations making the top 25 include triple-A **KFAN** Fredricksburg, Texas; modern **KNSX** St. Louis; album **KLAQ** El Paso, Texas; triple-A **KXST** (Sets 102) San Diego; and album **KLOS** Los Angeles. Triple-A **KBAC** Santa Fe, N.M., had the longest

average time spent tuning for rock formats at 4 hours, 35 minutes.

Entercom has signed a deal with StreamAudio.com to webcast its radio stations and insert ads into its audio. The project will roll out with album **WAAF** Boston.

Billboard *Bulletin* reports that MP3.com has removed major-label content from its MyMP3 music storage service. It's in the process of negotiating a settlement with the Recording Industry Assn. of America over the trade association's copyright lawsuit against MP3.com.

Per **Metallica's** request, Napster has banned more than 300,000 users that the band alleged to be copyright infringers. Users who think they've been misidentified can file a "counter notification" with Napster. Metallica's suit against the site continues to move forward. CNET.com reports that some Napster users have already come up with a way to circumvent the ban. Napster is working to track and block those users.

VH1.com has relaunched its site with a new fan clubs section with which it hopes to target sites such as the Ultimate Band List. The new section will offer guides to links and resources for dozens of artists.

## Stern Denies New Pact With CBS

The New York Post reports that **Howard Stern** has denied on-air the reports of a new five-year/\$100 million contract offer from Viacom/CBS. "I've never even met with CBS about a contract renewal," Stern said, referring to earlier reports by **Matt Drudge**. Stern added, "I think they think that nobody else wants to offer me stuff, but I've heard from different companies that want to hire me away, if I can say that." The Post's **John Mainelli** points out that while Stern himself may not be meeting with CBS yet, that doesn't rule out negotiations between CBS and Stern agent **Don Buchwald**, though neither party would confirm that. Forbes magazine lists Stern's annual income at \$18 million as of last March.

Meanwhile, Viacom COO **Mel Karmazin** says Viacom is still looking for more radio and TV stations and groups to buy. Speaking at a Bank of New York conference May 15, Karmazin said the company is also planning an IPO for its MTV Interactive unit.



In other Infinity news, The Washington Post reports that modern **WHFS** Washington, D.C., led an area moment of silence in honor of slain police officers on May 15 in observance of National Peace Officer Memorial Day. The paper reports that the idea for 15 seconds of silence, which other area stations, including modern rival **WWDC** (DC101), participated in, grew out of the appearance of **Rage Against The Machine** at the upcoming HFStival and a dinner that **WHFS** GM **Phil Zachary** attended.

The show will be at FedEx Field, home to the Washington Redskins. At the dinner were Zachary, Redskins president **Stephen Baldacci**, and area representatives of the Fraternal Order of Police. At issue was **Rage's** appearance at the show. The band is an outspoken supporter of a new trial for **Mumia Abu-Jamal**, who was convicted of killing a Philadelphia police officer. Eventually, those in attendance hit on the notion of the moment of silence as a way of showing that they supported both their local police and **Rage's** freedom of speech. Zachary brought the idea to the area broadcasters' association, and nearly two dozen stations participated in the on-air silence.

### DOCKET MONITOR: WXVO SUIT, PT. II

The Knoxville (Tenn.) News-Sentinel says album **WXVO** Knoxville owner **Dick Broadcasting** has responded to a \$3 million lawsuit filed

by a 14-year-old listener earlier this year, asking that the suit be dismissed. The boy filed suit after trying to win a pair of tickets from the station's host **Sarah "Ripley" McClune**. The incident occurred in February '99 when the boy showed up at the station in his mother's underwear in a typical "What would you do to win?" contest. Ripley then had the boy wear a dog collar, had him chained to a fence, and invited listeners to come see him. He was later brought to a video store and a bar where he was asked to do a table dance. Although the youth claimed he was humiliated and has been under the care of a mental-health professional, the station says the boy was a willing participant and signed a release saying he was of age. According to a response filed by Knoxville lawyer **Daniel M. Gass**, the boy actually asked what else he could do. "It was the [D]'s impression that the person wanted her to talk about him doing something outrageous on the radio... [He] told the [D]'s to be sure to get his name right on the air."

### BUSINESS: CC/SFX MOVE FORWARD

Clear Channel's \$4.4 billion purchase of SFX Entertainment will move forward, with the announcement that SFX has settled lawsuits filed by shareholders. In March, a group of investors led by Harbor Finance Partners filed a suit in the Court of Chancery in Wilmington, Del., alleging that SFX chairman **Robert F.X. Sillerman** and CEO **Michael Ferrel** negotiated a better stock-swap deal for their Class B shares than they did for Class A shares, which are publicly traded. Under the deal, Class A shareholders get 0.6 shares of Clear Channel stock for each SFX share, while Class B stockholders—comprising only Sillerman and Ferrel—get a full share. Although that formula remains intact, Class A shareholders will split an additional \$34.5 million in cash or Clear Channel stock, before legal fees and expenses. The agreement removes "all major obstacles" to the pending sale, according to a May 16 SFX filing with the Securities and Exchange Commission. The Justice Department has already cleared the merger.

Rubber City Radio buys album **WJXQ**, modern **WWDX**, and country **WXIK** Lansing, Mich., from 62nd Street Broadcasting.

### MANAGEMENT: JANE E.'S GOT A JOB

Former **WMJC/WBZO/WGSM** Long Island, N.Y., president/GM **Jane E. Bartsch** is named VP/GM of Denver and its sister stations.

**Pam Somers**, GM of Radio One's Baltimore R&B combo, adds VP/regional manager stripes for its stations in that market; Washington, D.C.; and Richmond, Va., including modern **WDYL**, where OM/PD **J.D. Kunes** puts himself on-air in p.m. drive. Classic rock **WONE** Akron, Ohio, production director **Casey Krukowski** joins for middays.



**The SPIN** BY MARK MARONE

212-536-5051 • mmarone@airplaymonitor.com

## 'Kryptonite' Breaks Active Spin Barrier

**3 Doors Down's** "Kryptonite" (Republic/Universal) becomes the first track to surpass 1,600 spins at active rock (1,616) and in the process eclipses the 1,500-spin mark for a fifth consecutive week. **Creed's** "Higher" (Wind-Up) had five nonconsecutive weeks of more than 1,500 spins in October and November of last year, while **Metallica's** "Turn The Page" (Elektra/EEG) accomplished the feat in December 1998. At mainstream, "Kryptonite" earns the second-highest one-week spin total with 2,553. That's only 47 shy of **Pink Floyd's** 2,600 total for "Keep Talking" in April 1994.

Not only do **Deftones** get their modern debut with "Change (In The House Of Flies)" (Maverick), but they do so while grabbing Greatest Gainer honors at the chart this week. The track also becomes the group's third active rock hit; its two predecessors also had parenthetical titles: "My Own Summer (Shove It)" and "Be Quiet And Drive (Far Away)."

The heritage chart lives up to its name this week, as all three debuts are by acts with long histories at rock radio. Longtime **Bad Company** lead vocalist **Paul Rodgers'** "Drifters" enters the chart at No. 34 and earns Greatest Gainer and Most New Stations honors. It's the first track from his CMC International debut, "Electric." Following at No. 37 is **Eric Clapton & B.B. King's** "Riding With The King" (Duck/Reprise). And **Bon Jovi** reaches charts with "It's My Life" (Island/IDJMG) at No. 38. The lower half of the heritage chart is especially tight this week with 14 of the chart's 19 bullets showing from No. 21 down. All six tracks between Nos. 27 and 32 are bulleted, with **Indigenous'** "Little Time" (Pachyderm) suffering a 28-32 drop despite an increase in spins.

PERSONNEL FILE: Elektra ups VP of West Coast promotion **Mike Whited** to VP of promotion. Whited will relocate to New York, where he will work alongside VP of promotion **Bill Pfordresher**.

RCA VP of rock promotion **Art Phillips** exits the label at the end of June. Until then, you can reach him at the office at 310-358-4074.

Former Mammoth rep **Donna Passuntino** joins Hollywood for Chicago duties.

CMC is currently considering candidates for its Northeast promo rep vacancy. For more information, call 919-875-3500.

TUNING IN: **KZRQ** Springfield, Mo., returns to the mainstream and active panels after a two-week absence due to technical difficulties.

Top 40 **KKRZ** (Z100) Portland, Ore., controller **Cheryl Salomone** is named GM of Clear Channel's Yakima, Wash., cluster, including album **KATS**. She replaces GM **Dave Aamodt**, who exits. Also, former **KFFM** jock **Jason "Kramer" Smith** returns to the station as PD/morning host, replacing **Jeff Jacobs**.

### FORMATS: Q104 Q-RRENTS

It hasn't anked its longtime classic rock position, but **WAXQ** (Q104) New York is now playing a handful of currents—nine-10 spins a week. It's also being consulted by AMFM's **Tom Poleman**, PD of top 40 sister **WHITZ** (Z100).

Top 40 **WEXP** Rutland, Vt., flips to classic rock as **Rock 101**, the Fox. Album **WPYX** Albany, N.Y., morning producer **Kevin Baker** joins as PD/afternoon driver; adult top 40 **WORK** Barre, Vt., morning co-host **Alicia Ty** takes middays; and crosstown country **WJAN** middayer **John Roberts** joins for nights. **WWI's** syndicated **Imus** will do morning drive.

Modern **KESO** McAllen, Texas, is now doing satellite-fed programming.

Triple-A **KFXJ** (The River) Boise, Idaho, adopts new calls **KRVB**.

### PROGRAMMING: JAXON IN ATLANTA

Album **KVRR** (94 Rock)/classic rock **KLSK** (Eagle 104)/modern **KTEG** (the Edge) Albuquerque, N.M., OM **Frank Jaxon** joins classic rock **WZGC** (Z93) Atlanta in the same capacity, replacing **Dwight Douglas**, who exited.

Modern **WMRQ** Hartford, Conn., PD/middayer **Dave Hill** exits. Call him at 860-548-1448.

Modern AC **WKOE** Atlantic City, N.J., PD/afternoons **Adam Fendrich** joins modern **WLRS** Louisville, Ky., as PD, with an air shift to be determined. Fendrich needs a morning show. He also needs service at 520 South Fourth Ave., Louisville, Ky. 40202.

### PEOPLE: THAT'S DR. MD TO YOU

Album **KDKB** Phoenix afternoon host **Dock Ellis** picks up MD duties. Across town, album **KUPD** MD **Bridget Ventura** exits.

Veteran album morning man **Gonzo Greg** joins modern **WRZX** (X103) Indianapolis in mornings, replacing **Wank** and **O'Brien**. The station also debuts the one-hour Saturday night show "Planet X," focusing on electronica and modern club music. And with production director **Steve Wilmes** exiting, **WRZX** and al-

bum sister **WFBQ** need a new production director.

Modern **WZPC** Nashville MD/middayer **Jason Joseph** adds the APD title.

Classic hits-based adult top 40 **WWWW** (Alice 106.7) Detroit unveils a new morning show, teaming **Mark Davis** from album **WMMR** Philadelphia and classic rock **KSEG** Sacramento, Calif., with **Darla Jaye** from adult top 40 **KIOI** San Francisco as **Davis** and **Darla**.

Top 40 morning veteran **Alan Kabel** (**WBBM-FM** [B96] Chicago, **KDMX** Dallas) resurfaces in mornings at classic hits **WLOL** Minneapolis.

Former classic rock **WVFX** Worcester, Mass., PD and **WMRQ** morning host **Jake** joins album **WAXK** (Rock 102) New London, Conn., for mornings, replacing **Daria Bruno** and **Rockin' Joe**, who exits.

Heritage **WRKR** Kalamazoo, Mich., MD **Chris Winters** exits.

Album **WBYP** (the Bear) Fort Wayne, Ind., middayer **Shannon Norris** adds the MD title. Nights remain open; T&Rs to PD **Jim Fox**.

Album **WZTA** Miami night host **Julie Guy** crosses the hall for afternoons at classic rock sister **WBGG**, sending **Bill Murphy** to middays. **WBGG** APD/middayer **Laura Francis** exits. **WZTA** P/T **Razor** gets Guy's night shift and is followed by the syndicated "Loveline" show. PD **Gregg Steele** still needs an APD/night host for **WBGG**.

Active **KZGL** Flagstaff, Ariz., MD/afternoon jock **Jason Cupp** exits. PD/morning host **Charlie Hicks** picks up music duties. Middayer **Matt** shifts to afternoons, and sister AC **KVNA** (Sunny 97) night jock **Brit Pop Corey** adds midday duties on **KZGL**. Nights will be voice-tracked.

Active **WFXF** (102.3 Extreme) Peoria, Ill., PD **Patrick McCrudden** takes afternoon drive; middays and nights remain open.

Album **KRAB** Bakersfield, Calif., afternoon jock **Aaron Lee** and night host **Fast Eddie** add those shifts at album sister **KURQ** San Luis Obispo, Calif., through the magic of technology. **KURQ** PD **David Atwood** needs service. Please send your active rock product to 51 Zaca Lane, No. 100, San Luis Obispo, Calif. 93401.

**Angela King** has joined Country Airplay Monitor in the newly created position of staff reporter. King is an experienced journalist who has worked in both broadcast and print. She was also a recent contestant on "Who Wants To Be A Millionaire."

## McCain Bill Would Bolster LPFM

Sen. **John McCain**, R-Ariz., has long been a friend to radio, so it came as a surprise to many when he introduced a bill last week that would allow the FCC to move forward with low-power FM. McCain hopes to "resolve the controversy that has erupted" over the licensing of micro-radio stations.

McCain, who oversees the Senate Commerce Committee, which any bill must first clear, opposes a bill sponsored by Sen. **Judd Gregg**, R-N.H., and a House version passed last month, both of which would halt the rollout of LPFM until studies have proved it would not interfere with existing stations. "I think we can reach a fairer result," said McCain during a May 8 floor speech.

Unlike Gregg's bill, McCain's FM Radio Act of 2000 would allow the FCC to license LPFM stations. It would also enlist the National Academy of Sciences to act as a referee, determining which LPFM stations are causing interference and what the microbroadcaster must do to correct it. Additionally, the bill gives full-power broadcasters the right to sue any LPFM operator for causing interference.



National Assn. of Broadcasters president/CEO **Eddie Fritts** says McCain's "logic is turned upside down," adding, "Interference should be resolved before LPFM stations are licensed, not afterward." He is also concerned that the only remedy for broadcasters is to go to court. "We see the potential for lengthy and expensive court cases that will only advantage lawyers, not FM listeners." The NAB opposes using the National Academy of Sciences as an intermediary, saying it has no experience in radio or in dealing with the thousands of complaints that likely will accompany LPFM.

Meanwhile, in the House, a number of members last week wrote FCC Chairman **Bill Kennard** claiming that the bill that passed the House in March is now veto-proof. "Given this fact, we call on you to suspend commission implementation of LPFM," they wrote.

The FCC has fined country **KITT** (193) Shreveport, La., for violating its contesting rules. On Feb. 14, its morning hosts ran a Millionaire Monday contest, which the FCC says failed to disclose that the winner wouldn't win \$1 million but, rather, 1 million Turkish lira, worth about \$1.90. Earlier this year, sister **KPRR** El Paso, Texas, was fined for a similar promotion, with a

prize in Italian lira. While the fine in both cases was only \$4,000, FCC Enforcement Bureau chief **David Solomon** says, "Future violations by stations owned by [Clear Channel] will likely result in significantly higher forfeitures."

Although there are several pending court challenges to its new equal-employment-opportunity rules, the FCC has appointed **Marlene Dortch** the chief of its EEO staff. Dortch has been a lawyer in the TV branch of the FCC's video services division since 1994.

### CAPITAL: CUMULUS DEALS DELAYED

The Clear Channel/Cumulus station swap will take a little longer, after the FCC flagged several station transfers. Citing its usual concerns about one group controlling too much of a market's advertising dollars, the FCC is taking a closer look at Clear Channel's picking up album rock **WQOB** and oldies **WQKL** Ann Arbor, Mich., and country **WATQ**, top 40 **WBIZ**, classic rock **WMEQ**, and country **WQRB** Eau Claire, Wis., from Cumulus.

As its stock price continues to sag, Cumulus is having a hard time raising money to close several of its pending deals. Connoisseur Communications CEO **Jeff Warshaw** has agreed to delay Cumulus' \$242 million buy of the 37-station group. Closing is delayed until the fall, although Cumulus already operates the stations in an LMA. If Cumulus defaults on the deal, it will lose a \$15 million down payment to Connoisseur.

Cumulus has also named a new CFO. Former Jacor VP of finance **Martin Gausvik** has joined the company. He should help Cumulus regain some confidence on Wall Street, where he was well-known for his work with Jacor, Citi-casters, and Taft Broadcasting.

Meanwhile, an 11th class-action lawsuit has been filed against Cumulus Media. The latest was submitted by New York attorney **Harvey Greenfield**. Like the others, it claims Cumulus misled investors by overstating profits. A Wisconsin judge is expected to consolidate the suits within the next few months.

### SALES: SUSQUEHANNA STOCKS UP

Susquehanna Radio buys classic rock **KCFX**, oldies **KCMO-FM**, and N/T **KCMO-AM** Kansas City from Entercom for \$113 million. The Justice Department forced Entercom to sell the trio to buy three others in the market from Sinclair, including album rock **KQRC**. The DOJ is also forcing Entercom-owned album **KYYS** to sell its rights to the Kansas City Chiefs games.

In a separate deal, Susquehanna buys triple-A **WMMM**, album rock **WOLX**, and country **WYZM** Madison, Wis., from Woodward Communications for \$14.6 million.

Triad Broadcasting buys country **WAIB**, classic rock **WWFO**, and top 40 **WHTF** Tallahassee, Fla., from Capitol City Radio Partners for \$15 million. GM **Hank Kestenbaum** will remain after the sale.

## MARC SCHIFFMAN ON THE SOAPBOX



### Radio Faces The Innovator's Dilemma

I was reading April's Motley Fool Monthly, which features a review of "The Innovator's Dilemma: When New Technologies Cause Great Firms to Fail," by **Clayton M. Christensen**. It got me thinking about where rock radio is these days.

Christensen says that when new technology arises, large companies tend to ignore it. They focus on their core business and don't want to be bothered with tinkering with a new, unproven idea or creating a boutique market for it. Instead, smaller companies embrace the new idea, fine-tune it, and build a market for it. As the new idea grows, it slowly eats into the core business of the big company that ignored it until it completely guts that company's business.

The author traces the phenomenon back as far as the steamboat. Early steamboats were slow and unreliable. Big shipping lines did not want to be bothered with using them for their moneymaking transoceanic voyages. So smaller companies found niches. They created routes on rivers and in lakes, two areas where traditional shipping companies had little interest. On those routes, the entrepreneurs perfected steamboat technology and eventually took on oceanic shipping, gutting the sailing industry.

So how is radio—which certainly qualifies as the (increasingly) big incumbent—handling new ideas? In a recent story on rhythmic music and modern rock, modern **WFNX** Boston PD **Cruze** said that the format was in a rut, though one that keeps morphing. Two years ago, modern wouldn't touch anything that didn't sound like **Tonic** or **Jewel**. Now anything that doesn't sound like **Korn** or **Rage Against The Machine** doesn't get played. Yes, these are quality, forward-thinking acts; and we're in better shape than we would have been if they hadn't gotten on the air at all (which could just have easily happened on the rock radio of years past). But that's not all that's out there. What's become of modern rock's willingness to keep branching out to new areas?

To be sure, no format needs to be a confusing jumble of too many styles, but why not look

closely at the market of musical ideas and pick and choose new directions to add in, using specialty shows or even your Web presence as the petri dish, then making sure those worthwhile new tracks are positioned as balance against the core sound of **Rage Against The Korn Bizkit**?

If we don't, "The Innovator's Dilemma" tells us, some new, upstart technology is going to creep up behind us and take listeners away one at a time. Already, the winter ratings are showing precarious drops for album and modern rockers alike (see story, page 1). Will the audience move on to a new destination, be it Internet streaming, ClickRadio, Sirius and XM, or SonicNet?

Some may argue that today's reality of public companies forces them to focus quarter to quarter. Perhaps as the market stumbles out of its high-flying days with its latest fits and starts, it might be time to redefine what is really shareholder value. It's not "What can you do for me this quarter?" It's the kind of long-term value you can build with the money that's being loaned to you through the purchase of your stock. Maybe as investors start turning toward more stalwart investments, it's time for radio to become one and decide to invest not just in next quarter but next year, developing the music that will keep people streaming to their signals as opposed to seeking streams on the Web.

**NOW IT'S YOUR TURN:** We've long toyed with the idea of opening our pages to our readers, trying to find a way to let people vent their feelings on major issues. People grab our ears all the time with "You should do a story on..." So, we'd like to offer our virtual Soapbox to our readers as their forum for what they see needing change or attention in this industry.

This is your forum and will only thrive if you come up with ideas you want to take a stand on. We welcome your input and feedback. If you'd like to take pen to paper and want to promote ideas, not agendas, call me at 212-536-5065. We hope this column will be a place for both sides of the business to be reflective, challenge each other, and call peers to action.

## RADIO CONCERT MONITOR

DATE	STATION	EVENT	PROMOTION DIRECTOR
May 19	KFTE Lafayette, La.	Cooler Show On The Planet	Rob Summers
APPEARING: 3 Doors Down, 8Stops7, Cowboy Mouth, the Flies, Live			
May 19	WHJY Providence, R.I.	Sinfest	Michele Maker
APPEARING: Boondock Saints, Caroline's Spine, Staind			
May 20	KXTE Las Vegas	Our Big Concert 3.5	Carly Johnston
APPEARING: Cypress Hill, Dope, the Flies, God Among Men, Godsmack, Inside Scarlet, Kittie, Left Standing, Papa Roach, Phatter Than Albert, SRC, Staind, Static-X, Stone Temple Pilots, System Of A Down			
May 20	WKQX Chicago	Jamboree 2000	Tom Lisack
APPEARING: 311, the Bloodhound Gang, Eve 6, Everclear, Goldfinger, Long Beach Dub Allstars, Mighty Mighty Bosstones, Moby, the Suicide Machines, Third Eye Blind, Travis			
May 20	WWDC Washington, D.C.	21st Annual Chili Cook-Off	Colin Campbell
APPEARING: 8Stops7, Goo Goo Dolls, Our Lady Peace, Stroke 9, Vertical Horizon			
May 21	KPNT St. Louis	Pointfest 12	Woody Justik
APPEARING: 311, 8Stops7, Colony, Die Symphony, Everclear, Goldfinger, Mesh, Mighty Mighty Bosstones, the Nixons, Our Lady Peace, Stir			
May 27	WBCN Boston	WBCN River Rave	Chachi Loprete
APPEARING: Cypress Hill, Eve 6, Filter, Godsmack, Mighty Mighty Bosstones, Powerman 5000, Static-X, Stone Temple Pilots			
June 2	KATT Oklahoma City	24th Birthday Party	Don Sweeney
APPEARING: 3 Doors Down, Blue October, Caroline's Spine, Erotic Suicide, Full Devil Jacket, Godsmack, Lure, Ian Moore, Slowwein, Stone Temple Pilots			

Let us monitor your event! Call Marc Schiffman at 212-536-5065 or E-mail [mschiffman@airplaymonitor.com](mailto:mschiffman@airplaymonitor.com)

## amusement business

## BOXSCORE TOP 10 CONCERT GROSSES

#1	Artist: GEORGE STRAIT COUNTRY MUSIC FESTIVAL Venue: Adelphia Coliseum, Nashville Date(s): April 30 Att. 50,983 Capacity: sellout Gross: \$2,450,011
#2	Artist: GEORGE STRAIT COUNTRY MUSIC FESTIVAL Venue: Lowe's Motor Speedway, Charlotte, N.C. Date(s): April 29 Att. 46,157 Capacity: sellout Gross: \$2,351,556
#3	Artist: RICKY MARTIN Venue: Molson Centre, Montreal Date(s): March 23-24 Att. 29,715 Capacity: two sellouts Gross: \$1,509,989
#4	Artist: KISS, TED NUGENT, SKID ROW Venue: Starplex Amphitheatre, Dallas Date(s): April 2 Att. 18,135 Capacity: sellout Gross: \$728,899
#5	Artist: ELTON JOHN Venue: Consecro Fieldhouse, Indianapolis Date(s): April 15 Att. 12,750 Capacity: sellout Gross: \$674,650

#6	Artist: JIMMY BUFFETT & THE CORAL REEFER BAND Venue: Starplex Amphitheatre, Dallas Date(s): April 13 Att. 19,538 Capacity: sellout Gross: \$665,111
#7	Artist: JIMMY BUFFETT & THE CORAL REEFER BAND Venue: Blockbuster Desert Sky Pavilion, Phoenix Date(s): April 25 Att. 19,528 Capacity: sellout Gross: \$636,600
#8	Artist: RED HOT CHILI PEPPERS, FOO FIGHTERS, BICYCLE THIEF Venue: Frank Erwin Center, Austin, Texas Date(s): May 2 Att. 13,404 Capacity: sellout Gross: \$469,140
#9	Artist: ELTON JOHN Venue: Roberts Stadium, Evansville, Ind. Date(s): April 14 Att. 8,073 Capacity: 12,577 Gross: \$379,705
#10	Artist: RED HOT CHILI PEPPERS, FOO FIGHTERS, BICYCLE THIEF Venue: Norfolk Scope, Norfolk, Va. Date(s): May 8 Att. 11,100 Capacity: sellout Gross: \$379,225

Copyrighted and compiled by Amusement Business, a publication of Billboard Music Group. To subscribe to Amusement Business call 1-800-999-3322.

## Rock PDs Say Hot Top 40 Music To Blame For Disappointing Fall

Continued from page 1

Schock says, "I do touch upon some of that area, but I try to mix it up."

At modern KEDJ Phoenix, PD Paul Kriegler observes that a lack of differentiation could be hurting some stations. Looking back to when modern AC was seen as a threat to modern stations, Kriegler says, "active and alternative formats share more music now than modern AC and alternative ever shared."

Joint Communications senior program and research consultant Chris Kennedy is concerned about rap/rock's polarization potential. "The 18- to 34-year-old men who love these styles are extremely passionate and very vocal. They actively call the radio station request lines and, when they participate in station research—call-out, music tests, etc.—the scores are strongly positive. While there are fans of . . . these styles among 20- to 34-year-olds, the level of passion is clearly 18-20 nationally. [They] are driving their demand engines. This passion is very confusing for many programmers, because PDs and MDs see this passion in their in-house research. Tactically, PDs may decide they have to ride this latest music wave. However, be cautious, for this polarizing tactic may overwhelm your strategic direction and brand, taking the station down the wrong path."

The problem, says Kennedy, is such new-music trends will get stuck with your radio station. If the style crosses to mainstream, your station wins by having the brand identify with the musical movement. If it fails to blow up, "the image cleanup job can be very expensive—and nearly impossible—to eliminate. It's costly in lost dinero, as well as Arbitron results."



LUCZAK

### MISSING THAT EARLY SPIRIT?

Blue Chip's Luczak blames post-consolidation homogenization. He says, "Nothing is going on with these formats. That is the problem. No local decisions. It is all cookie-cutter from some VP who makes 15 stations sound exactly alike."

Consultant Tom Barnes agrees that today's public radio company has a "consolidation-driven back-office efficiency focus [and] no focus on programming creativity."

"No wonder the audiences get bored," says Luczak. "Where is the innovation? How many times can you say 'Rocktober' for crying out loud?"

Luczak is worried that the early spirit of rock radio is gone. "Rock used to be the music of rebels," he says. "Now people in our industry will have you believe it's just another 'brand' like a box of soap at the supermarket. When Eric Clapton sang 'Layla,' he wasn't thinking about sound codes, eras, or imaging. He was pouring out his soul about fucking his best friend's wife."

Luczak also asks, "How can a format call itself 'active rock' then play four old classic rock songs and one new song? People aren't stupid. They can figure out other places to find their music. I heard an ad on TV the other night promising the viewers the chance to 'create their own radio station.' Obviously there is a problem."

Barnes agrees that sites like Napster and MP3 are "pulling all the rock tastemakers/early adopters off the radio." He asks, "Did anyone go to a snowcore show? If so, why isn't anyone playing Mr. Bungle? Does anyone reading this even know who they are? I had a kid offer me \$150 to see them play a club in Atlanta a year ago. Nobody is paying attention to the music. Everyone is just trying to keep their job. Who can blame them?"

### CRISIS, WHAT CRISIS?

But Jacobs Media consultant Fred Jacobs is not convinced there's a rock ratings problem. "There are just some books that even Pierre Bouvard wouldn't be able to explain," he says. "A lot of stations had really good books, and there were a lot of books that don't look good."

He also disagrees with the "top 40 has better music" argument. "Perhaps pop music is very good and has been for some time. But that's

been the case for a while. [Modern WXRK New York PD] Steve Kingston has argued since the grunge thing exploded and backed down [that] it's been this way for five years. It's not like 1999 or the beginning of 2000 is that odd. Metallica has been stalwart. I wouldn't look at this time and say we're in a drought."

Further, Jacobs says that 12-plus and target demos aren't tracking together this time. He cites modern KNRK Portland, Ore., being down 12-plus but up 18-34 and KNDD Seattle holding flat 12-plus but rising nearly 25% in demo. "There's a lot of those," he says. "There may also be some cases where stations appeared to go up and demo didn't or they went up in women, and that's not who they're going after."

"You can't react to one Arbitron book or the 12-plus number," says modern WWDC (DC101) Washington, D.C., PD

Bob Neumann. "Our book in D.C. showed us going 4.2-3.3 12-plus. Looking into the numbers, DC101 was first [among] non-ethnic 18-34 adults and second [among] non-ethnic 25- to 34-year-old men, our narrow target. From the outside I can certainly see how DC101's winter book would look bad. But I'll take a definite win in our target demos any day over the 12-plus number."

And Jacobs says perceptual research shows no indication of audience dissatisfaction. "You do have some pretty stable data, looking at mainstream or classic rock. With alternative or '90s active, there is a little more flux," he says. "I sift through these studies, and there's nothing really going on. I can't recall a conversation in the past six months [where a station says,] 'Oh my God, is there something wrong with the format?'"

He relates an anecdote from his days as the research guy at the ABC chain. He was initially charged about his job description of going over the ratings books and making analytical judgments about what was going on at the stations. "[But] every rating period it was more frustrating, because every time you had a trend, there would be anomalies out there that would be really persuasive" against that trend.

### A SAMPLING ISSUE?

Then there's the diary-response issue. One programmer says, "A few PDs I've talked to think there's [been] sampling issues with Arbitron ever since they delayed the numbers." This programmer goes on to reference a Ted Bolton article suggesting that "Arbitron might get a better statistical sampling by going one person per household instead of multiple."

Calling the falling rock numbers "very alarming," LBJ's Broadcasting OM Jeff Carrol says, "I believe it is a problem Arbitron has with reaching the active young males. It is getting harder and harder. I find it true while recruiting for music tests as well. That is not to say that we have fewer listeners. They are just not responding to the methodology that we use to reach them."

Joint's Kennedy agrees. "In the last year alone, we have seen in our national/regional perceptual research a 15% response decrease with attempted interviews, because no 18- to 34-year-old males were available to participate in the study." Kennedy says that smaller samples mean the 18-34s who do respond are "overvalued" and subject the demo to wild fluctuations.

But Luczak says blaming Arbitron is a game of smoke and mirrors. "Diary placement and sampling issues will always plague measurement. Rock is down because people are finally getting tired of hearing the same 300 songs."

Sampling issues or not, there's always some level of fluctuation from book to book. "There's a reason that Arbitron is trying to get us to think in terms of four-book averages," says Jacobs. "It's not only good for sales but for all of us, so we don't get fixated on one book and think, 'Oh my God!'"

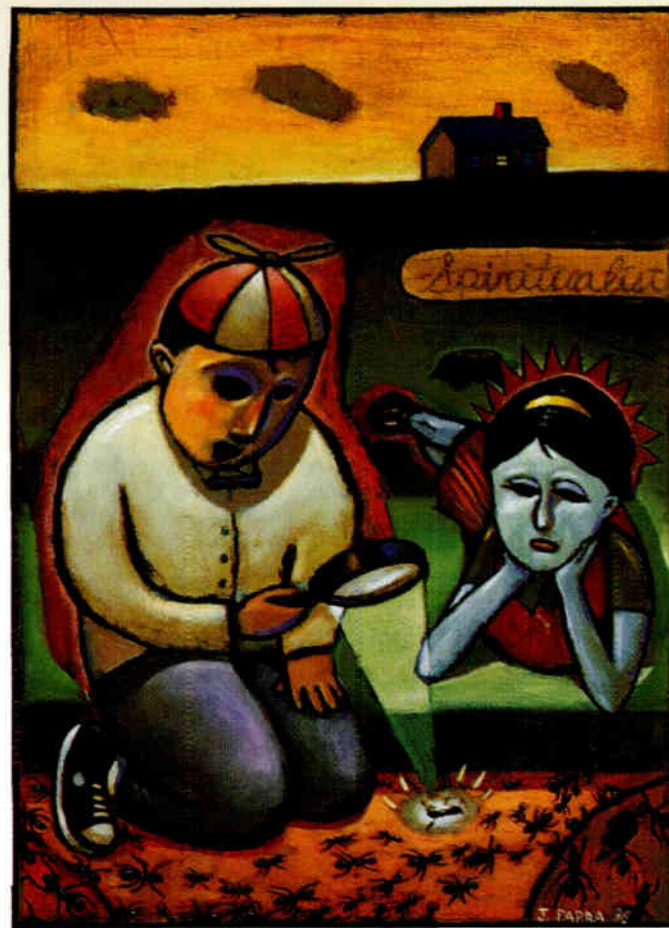
"If we caught . . . two or three books in a row when things are looking strange, then you've got to start looking at global issues," adds Jacobs.



JACOBS

## MOST REQUESTED AT MODERN AND ACTIVE ROCK!

—a perfect circle—



judith

the first single from the album mer de noms

video directed by david fincher

- 3 Active Rock Monitor
- 7 Mainstream Rock Monitor
- 12 Modern Rock Monitor

on tour with NIN

billy howerdel  
maynard james keenan  
paz lenchantin  
josh freeze  
troy van leeuwen

in stores may 23rd!

produced by billy howerdel  
management: arthur spivak/stuart sobol for spivak entertainment  
www.aperfectcircle.com  
www.virginrecords.com



© 2000 virgin records america, inc. all rights reserved.

go to [virginrecords.com](http://virginrecords.com) for details on the live webchat with maynard james keenan and billy howerdel on may 21st

## Madmen Across The Studio



Modern WNNX (99X) Atlanta's morning show hosted Collective Soul's Ed Roland and Sir Elton John for a two-hour in-studio interview. John and Roland co-wrote a song on the forthcoming Collective Soul release. Shown, from left, are morning men Jimmy Baron and Barnes, John, Roland, and PD/morning co-host Leslie Fram.

## The Man Who Brought Travis to Y100



Epic's Mike Martinovich brought Travis to meet modern WPLY (Y100) Philadelphia PD Jim McGuinn and play some live versions of songs from its album, "The Man Who" Shown, from left, are McGuinn, Travis' Dougie Payne, Martinovich, and Travis' Fran Healy.

## A Few Minutes With One Minute Silence



One Minute Silence spent a few minutes talking with the folks at album KLFX Killeen, Texas. Shown, from left, are One Minute Silence's Yap, PD Bob Fonda, and One Minute Silence's Massy.

# MONITOR PROFILE

## After Being Reimagined By Rivals, WBZX Again Reclaims 'Battle Flag' For New Rock

PD Hal Fish has programmed WBZX (the Blitz) Columbus, Ohio, since the early '90s, when it was classic rock. He was given the opportunity to launch the Blitz in 1992. "There was no active rock then. These names developed later on," he says. "There were a couple of stations out there doing what we were doing. [WBBZ] the Blaze in Chicago was doing something similar and sort of pioneered that hair-band thing. We started out doing some of that, but the thing that really jump-started our radio station was when we combined what was at the time the alternative crossover stuff"—Stone Temple Pilots, Pearl Jam, Alice In Chains, etc.—"and the numbers skyrocketed."

WBZX was part of a transition in the format's history, helping bring hard rock to the mainstream. Fish remembers the initial reaction of rival heritage rocker WLVQ. "The GM there, Tom Thon, called up our GM and commented, 'Nice Metallica.' I think about two years later he thought, 'How do I get that on my radio station?' although they don't play Metallica even today. On the other end was one of the last Z-Rock, heavy-metal true believers that went away within a year of the Blitz launch."



*'If you're going to fly the new-rock flag, you have to stand underneath it'*  
**Hal Fish**  
 Program Director  
 WBZX Columbus, Ohio  
 Owner: North American Broadcasting  
 Ratings: 5.5-5.3-5.4-6.2

WBZX was riding high until about four years ago, when Jacor set up a classic flanking assault. WZAZ took the modern angle, and WAZU "basically mimicked what we did—maybe a little harder. They talked about us on the air, saying we were wimpy and they weren't afraid to play the hard stuff, and [Jacor] basically flanked us," says Fish. "With these flanking maneuvers able to siphon off these specialty audiences within our format, the goal was to bring WLVQ back to prominence and get them above us again."

To defend against that move, which Fish says he expected, WBZX put on Howard Stern in mornings. "I'll be the first to say that that first year, Stern really saved our bacon, [as] the numbers eroded pretty quickly on both sides of us." As a result, "we held in there. Our numbers were still good—in the fives—but we knew that we had continuing problems" with those flankers.

So began the latest chapter in the WBZX story a little more than a year ago. "We decided to take a hard look at the direction of our station outside of Howard Stern," says Fish. Perceptual studies showed that "people had seen us... as 'that new station.' [Then] new stations came on both sides of us, and they kind of made us seem old."

Musically, the earlier Blitz audience, which was happy hearing Led Zeppelin mixed with new rock, aged out of the station's demo. Harking back to the days when WBZX called itself "the New Music Revolution," Fish says, "we decided to consolidate our audience and bring back the 'New Rock' part of our radio station. We call ourselves 'New Rock 99.7, the Blitz' now.

"The philosophy is no different than it was when we [first] went on the air," says Fish of WBZX's demo target. "We don't want to fight for 35-year-olds. We know we can't have them and play Fred Durst... What we really want is

20- to 29-year-olds. That's the core of the audience for this radio station. And what we get on either side of that is gravy. We get a lot of teens, and we get a lot of 18-24s, but if you take out that cell, we dominate largely 20-29, which is our goal." Now, WBZX's mission statement is "playing the most contemporary kind of rock music that's out there. It did in 1992. It does in 2000," says Fish.

And like those early days when the Blitz first mixed hard rock and new rock, musically, Fish says, "we always had the philosophy that we won't take anything for granted. There are certain hits that seem to fit in the mix OK. For instance, we had great tests and had a pretty good run with 'Battle Flag'... We seem to carry some of that alternative heritage that we established in '94 or so. The harder edge, though, certainly is the way to go. The active edge and the Tools and the Stainds and things like that is very much part of what we do. And then the hip-hop stuff with the Kid Rocks and the Limp Bizkits played very well to our audience. So, we just... increased the frequency of that music."

And he isn't kidding about the increased frequency. WBZX is spinning its top tracks in the upper 40, and that's despite at least 20 hours of music-free programming a week with Stern.

"If you're going to be new rock and fly that flag, you have to stand underneath that," says Fish. "Especially when you have—as we call them—the peashooters on both sides that are going to do it every two hours. You've got WAZU playing those currents 80 times a week, and that philosophy is to be what the Blitz is and more. And WZAZ is the same way. Their average era year is 1997. Very current-based radio stations on either side of us [are] siphoning off our numbers, so we had to really make that an irrelevant factor for our audience."

Then there's the familiarity issue. "We always figured if you're going to get this stuff familiar, you've got to get it out there," says Fish. "You do get the verbatims coming back from people saying, 'I hear the same stuff over and over again,' and coming from AOR and classic rock, that's a scary statement. However, if you start talking to people who program current-based radio stations, a lot of them will tell you that that's a good sign. If your audience is telling you you're spinning the same records over and over again, apparently you're hitting the records a lot, and they're noticing it, and if they want to hear the latest from Limp Bizkit, they know they can get it here, because we're going to spin it every three hours."

Here's a sample hour on WBZX: Kid Rock, "God Only Knows Why"; Nirvana, "Smells Like Teen Spirit"; Limp Bizkit, "Take A Look Around"; Filter, "Hey Man, Nice Shot"; 3 Doors Down, "Kryptonite"; Pink Floyd, "Learning To Fly"; Korn, "Make Me Bad"; Alice In Chains, "Rooster"; Creed, "What If"; Green Day, "When I Come Around"; Rage Against The Machine, "Guerrilla Radio"; and Metallica, "King Nothing."

The latest retooling seems to be paying off for WBZX, which enjoyed a 5.4-6.2 12-plus rise in the winter Arbitron book. But the rock density is still heavy in Columbus. And the prospect of someone leaving the format is constantly talked about, "but we've been saying that for two years," Fish says. "ZAZ keeps talking about improving their signal strength... and whether that's going to happen or not, I can't say, but they're down to a 1.4 now. I would think that something's got to give there."

And WAZU, says Fish, lives off the WBZX cume. "Maybe they can keep that in perpetuity, just keep it going and try to keep our 12-plus numbers underneath 'LVQ. We're pretty tight right now, those numbers are pretty close, but maybe they figure it's worth it so they can have the glory number." **MARC SCHIFFMAN**

# WINTER ARBITRONS

12-plus overall average quarter-hour shares. (#) indicates Arbitron market rank. Copyright 2000, Arbitron Ratings Co. May not be quoted or reproduced without the prior written permission of Arbitron.

Calls	Format	'99	Sp '99	Su '99	Fa '99	'00
<b>SAN ANTONIO, TEXAS—(32)</b>						
KTFM	top 40/rhythm	9.4	11.3	9.7	9.8	9.9
KISS-FM	album	5.8	7.5	7.6	8.1	7.7
KCOM	top 40	8.4	7.6	6.6	6.7	6.7
KOHO-AM-FM	oldies	6.3	5.4	5.5	5.0	5.6
KDTH-AM-FM	Spanish	4.7	6.4	5.7	6.9	5.2
KAJA	country	4.2	3.9	5.3	4.4	5.0
KZEP-FM	cls rock	7.0	6.3	5.9	6.7	5.0
KCYT	country	4.0	4.4	5.2	4.6	4.8
KSMG	adult top 40	4.3	4.6	3.7	4.3	4.6
KQXT	AC	4.2	3.2	4.2	3.7	4.1
WDAI	N/T	3.4	3.9	3.6	3.7	4.0
KTSA	N/T	5.7	3.7	3.5	3.3	3.4
KROM	Spanish	4.0	2.8	3.7	3.1	3.3
KCJZ	R&B oldies	2.6	2.2	4.7	3.6	3.0
KLEY	Spanish	3.5	2.5	1.9	2.6	2.9
KCDR	Spanish	2.1	0.8	1.6	0.8	2.1
KRVX	country	1.8	1.6	2.0	1.6	1.9
KLUP	adult std	2.1	2.6	2.4	1.6	1.7
KSLI-AM-FM	R&B adult	1.7	2.1	1.5	1.9	1.6
KEDA	Spanish	0.8	1.5	0.8	0.9	1.1
KBUC	country	—	0.3	0.3	0.5	1.0
<b>ORLANDO, FLA.—(39)</b>						
WTKS	N/T	7.0	6.7	7.7	6.0	7.9
WXKL	top 40	7.6	5.6	7.3	8.2	7.8
WVKA	country	6.5	7.1	7.4	6.4	6.9
WNGF	AC	6.8	5.3	6.3	5.4	6.0
WIRR	album	4.4	5.3	4.6	4.5	5.5
WOMX-FM	adult top 40	5.5	6.0	5.1	4.9	5.5
WJHM	R&B	5.9	5.3	4.9	5.3	5.4
WDBO	N/T	6.3	6.4	6.9	6.1	5.0
WSHE	oldies	3.6	5.7	5.6	5.1	4.5
WCFB	R&B adult	4.3	3.4	3.9	4.4	4.3
WNNO	triple-A	5.5	5.3	4.3	4.3	4.3
WHTQ	cls rock	3.6	3.9	4.2	4.0	3.9
WLOQ	jazz	3.9	4.1	3.9	5.8	3.7
WPYO	top 40/rhythm	1.9	2.4	2.3	1.9	3.6
WOCL	R&B oldies	4.0	4.8	2.9	2.9	2.7
WHDQ	adult std	2.6	2.2	2.0	1.9	2.4
WPCV	country	1.1	0.8	1.5	0.8	1.5
WNOQ	Spanish	0.9	0.8	1.0	1.2	1.3
WOKB	Spanish	1.0	1.9	1.1	1.2	1.2
WQTM	sports	1.2	1.2	1.4	1.3	1.1
<b>GREENSBORO, N.C.—(42)</b>						
WTQR	country	9.4	9.3	9.7	8.3	8.0
WMAG	AC	7.1	6.1	6.7	6.3	7.7
WQMG-FM	R&B adult	7.4	5.5	7.9	7.5	7.6
WJMH	R&B	7.3	8.6	9.3	7.2	7.1
WKRR	cls rock	5.4	6.2	5.0	5.9	5.9
WMQX	oldies	6.0	6.1	6.5	5.1	5.7
WKZL	top 40	4.0	3.9	3.3	5.9	5.2
WKSJ	adult top 40	4.1	5.2	4.0	4.5	4.3
WNSL	country	5.1	5.8	4.6	5.9	4.1
WSJS	N/T	5.5	4.8	4.1	3.9	4.1
WXRA	album	3.5	3.6	3.6	3.1	3.2
WEAL	religious	1.8	2.1	1.1	1.4	2.4
WXLU/WXIX	country	1.5	1.7	1.9	2.1	1.7
WDCG	top 40	1.9	1.3	2.1	1.8	1.5
WEND	modern	1.1	1.5	1.1	1.0	1.1
WIST-FM	adult std	1.2	1.5	2.1	1.1	1.1
WMFR	N/T	1.2	1.4	0.7	0.7	1.1
<b>NASHVILLE—(43)</b>						
WQOK	R&B	8.5	7.7	10.0	8.4	9.7
WRVW	top 40	6.4	5.9	6.9	7.7	8.8
WSIX	country	8.7	8.9	7.9	6.2	6.6
WJZA	AC	6.5	5.4	6.1	8.2	6.5
WNRQ	cls rock	7.8	9.0	8.1	6.7	6.4
WRMX	oldies	6.3	5.7	5.3	6.0	5.2
WSM-FM	country	6.9	6.5	6.2	4.4	5.2
WYTH	N/T	4.7	3.2	3.5	4.7	4.6
WKDF	country	3.9	3.6	3.4	4.5	4.2
WZPC	modern	1.0	4.0	4.0	4.7	3.3
WGFX	cls rock	3.3	2.5	3.5	2.8	3.2
WLAC-AM	N/T	3.9	2.5	3.2	3.3	3.1
WSM-AM	country	2.9	2.7	3.7	3.7	2.9
WYOL	religious	2.2	2.7	2.3	3.0	2.7
WZTO	religious	1.8	2.3	1.7	2.3	2.7
WZQZ	top 40	2.7	3.0	3.4	2.1	2.5
WNPL	R&B oldies	2.7	2.6	2.2	2.3	2.0
WRQQ	adult top 40	—	—	—	—	1.5
WMDB	R&B	0.7	—	0.5	0.6	1.0
<b>RALEIGH, N.C.—(48)</b>						
WQOK	R&B	7.3	7.5	7.7	7.4	7.6
WDCG	top 40	7.5	6.4	8.4	7.7	7.4
WNHL/WBUR	religious	5.5	8.5	6.3	6.9	7.2
WQDR	country	6.3	5.5	6.0	7.1	6.8
WFTF	N/T	6.1	5.6	6.8	5.7	6.4
WFXC/WFXK	R&B adult	5.1	4.8	5.0	4.1	6.3
WTRG	oldies	5.3	5.5	5.7	4.4	5.9
WRAL	adult top 40	6.2	5.3	5.7	5.7	5.6
WRSN	AC	4.4	5.0	4.6	4.5	5.5
WRDU	cls rock	5.2	5.9	5.2	5.7	4.3
WBBB-FM	album	3.5	4.7	4.1	3.9	3.6
WJMH	R&B	2.4	2.2	1.9	2.6	2.4
WXLU/WXLU	country	3.3	2.8	2.9	3.1	2.2
WMPM	country	0.6	0.9	0.6	1.0	2.1
WWNO	jazz	2.3	2.5	2.4	2.3	1.8
WRBZ	N/T	1.8	1.8	0.8	1.6	1.2
<b>AUSTIN, TEXAS—(49)</b>						
KASE	country	8.6	8.4	8.3	7.7	8.1
KGBT	top 40/rhythm	5.4	6.9	8.1	6.7	6.1
KKJX	AC	5.2	5.5	5.0	5.3	5.3
KRQJ	modern	3.7	5.1	4.2	3.7	5.0
KGSR	triple-A	3.8	3.4	4.6	4.3	4.9
KLBJ-AM	N/T	5.3	5.5	5.8	4.3	4.7
RANX	adult top 40	5.2	5.2	5.6	5.6	4.4
KEVI	oldies	4.1	3.6	3.2	3.9	4.2
KLBJ-FM	album	4.8	4.6	5.4	4.3	4.1
KVET-FM	country	4.0	5.0	5.0	4.5	3.7
KHFI	top 40	5.7	5.5	5.0	4.6	3.5
KFMK	R&B oldies	5.4	2.8	3.7	3.9	3.4
KJFK	N/T	1.5	2.4	1.5	1.9	2.4
KPEZ	cls rock	4.2	3.5	3.4	2.9	2.2
KELG	Spanish	1.0	1.0	1.1	2.2	2.1
KVET-AM	sports	1.0	1.0	1.7	2.0	2.1
KULB	Spanish	1.5	1.3	1.3	1.5	1.8
KLNC	country	1.9	2.1	1.9	2.1	1.6
KJCE	R&B adult	1.4	0.7	1.1	1.3	1.5
KAHK	cls rock	1.4	0.9	0.8	0.8	1.4
KQQA	Spanish	—	0.6	1.1	1.2	1.4
KSAN	Spanish	—	0.4	—	—	1.0
<b>WEST PALM BEACH, FLA.—(50)</b>						
WEAT-FM	AC	10.9	9.2	9.7	8.6	9.0
WJBW	adult std	6.0	5.4	6.3	7.2	6.8

Calls	Format	'99	Sp '99	Su '99	Fa '99	'00
<b>ALBUQUERQUE, N.M.—(72)</b>						
KRST	country	9.5	8.3	9.4	9.7	9.2
KKOB-AM	N/T	9.3	8.1	8.2	8.2	8.2
KHFM-FM	classical	5.0	4.9	4.5	4.2	6.0
KMGA	AC	4.2	5.1	5.7	5.4	5.8
KZRR	album	5.6	4.5	5.1	6.6	5.0
KIOT	cls rock	3.8	4.3	3.9	3.4	4.2
KTEG	modern	4.7	3.9	3.8	4.6	4.2
KKOB-FM	adult top 40	4.6	5.7	4.2	4.0	4.0
KPEK	adult top 40	6.2	5.0	6.0	4.2	4.0
KYLZ	top 40/rhythm	3.0	4.1	2.7	3.6	3.8
KKSS	top 40/rhythm	4.1	4.4	3.0	3.2	3.6
KTBL	country	3.5	3.8	5.5	4.3	3.6
KMGG	R&B oldies	3.0	2.7	3.2	2.5	2.9
KABG	oldies	2.2	1.5	—	2.6	2.5
KIVA	adult std	—	0.3	1.6	1.9	2.2
KLSR	cls rock	2.3	2.5	1.7	1.9	2.2
KLYO	Spanish	3.0	3.4	2.5	3.1	2.1
KCHQ	top 40	1.7	1.7	2.6	2.5	1.8
KZKL	oldies	2.2	1.6	2.8	2.1	1.8
KSYU	AC	—	—	0.4	1.4	1.5
KHML	sports	1.1	1.0	0.7	1.3	1.3
KRQS	album	1.7	1.6	1.7	1.3	1.0
KRZY-AM	sports	0.8	0.5	1.6	0.8	1.0
KRZY-FM	Spanish	1.3	2.0	1.2	0.9	1.0
<b>HARRISBURG, PA.—(77)</b>						
WNNK-FM	top 40	11.9	10.0	11.0	10.0	11.2
WHP	N/T	8.8	9.0	8.3	7.8	9.1
WRBT	country	6.0	6.1	6.7	7.9	8.1
WTPA/WNCE	cls rock	6.9	5.5	6.8	4.6	6.6
WRYV	cls rock	7.6	10.2	8.2	6.8	6.5
WVWL-AM-FM	oldies	6.7	5.4	5.5	4.4	6.5
WQXL-FM	album	4.9	6.1	6.4	6.4	5.3
WRZC/WHYL	country	5.6	7.3	7.2	6.5	4.8
WLAN-FM	top 40	2.4	2.7	3.0	3.2	3.1
WRZO	AC	2.7	3.7	2.3	4.0	3.1
WZBR	N/T	3.1	1.4	2.5	2.3	2.4
WDAC	religious	3.1	1.1	1.9	1.8	2.1
WKBO	adult std	1.6	1.5	1.4	1.9	1.9
WYCR	adult std	1.2	1.7	2.0	1.4	1.9
WHYL-AM	R&B adult	1.6	1.6	2.3	1.9	1.6
WTCY	R&B adult	2.6	2.5	2.3	3.0	1.6
WARM-FM	AC	1.3	1.9	1.6	2.1	1.5
WEGK	cls rock	—	—	1.9	1.3	1.3
WQIC	AC	0.8	0.6	0.6	1.1	1.3
WVMO	easy	0.5	—	—	0.7	1.2
<b>BATON ROUGE, LA.—(82)</b>						
WYNK-FM	country	7.4	8.1	7.5	8.0	9.6
KRYE	AC	7.0	6.4	4.9	6.5	7.4
WEMX	R&B	9.1	7.8	10.3	7.4	7.3
WFMB	top 40	6.1	5.7	5.3	5.3	7.0
WDOX	R&B oldies	5.5	5.8	5.4	4.5	6.4
WDGL	cls rock	5.9	7.0	5.9	6.2	6.1
WJBO	N/T	5.2	5.8	5.6	5.0	5.3
WJCT	country	5.2	5.2	4.1	4.5	4.9
WJBT	R&B adult	5.2	5.7	5.7	5.3	4.2
WTOG/KJAY-FM	R&B oldies	2.8				

# full devil jacket

now you know

Monitor Active Rock **19**  
497 Spins +64

Monitor Mainstream Rock **25**  
577 Spins +81

Excellent Call-out @  
WZTA KUPD Media Base  
Soundscan over 28,000 in 8 weeks!



On over 100 Stations including:

WZTA 25x	KUPD 15x	WMFS 23x	WXTM 23x	WAAF 13x
KRXQ 14x	KILO 17x	WQXA 15x	KQRC 15x	WNOR 17x
	WJRR 12x	KATT 13x	WRIF 12x	
		WXTB 12x		
		WCCC 11x		



For more on upcoming events, updates from the road, new demos and more, go to [www.fulldeviljacket.com](http://www.fulldeviljacket.com)

See them on Tattoo The Earth

## Monitor **MODERN ROCK**

Compiled from a national sample of data supplied by Broadcast Data Systems to Rock Airplay Monitor. All station data stations are electronically monitored 24 hours a day, 7 days a week. © 2000 Billboard/BPI Communications.

FOR WEEK ENDING MAY 14, 2000

THIS WEEK	LAST WEEK	WKS. ON CHART	MODERN ROCK AIRPLAY		DETECTIONS		
			TITLE/IMPRINT/PROMOTION LABEL	ARTIST	TW	LW	
			★ ★ ★ No. 1 ★ ★ ★				
1	1	10	KRYPTONITE REPUBLIC/UNIVERSAL	2 weeks at No. 1	3 DOORS DOWN	2237	2094
2	2	11	ADAM'S SONG MCA		BLINK-182	2018	2039
3	3	22	OTHERSIDE WARNER BROS.		RED HOT CHILI PEPPERS	1734	1932
4	5	8	WITH ARMS WIDE OPEN WIND-UP		CREED	1712	1574
5	4	29	PARDON ME IMMORTAL/EPIC		INCUBUS	1630	1707
6	6	6	SOUR GIRL ATLANTIC		STONE TEMPLE PILOTS	1562	1540
7	8	15	MAKE ME BAD IMMORTAL/EPIC		KORN	1408	1376
8	10	9	BREAKOUT ROSWELL/RCA		FOO FIGHTERS	1382	1303
9	7	15	VOODOO REPUBLIC/UNIVERSAL		GODSMACK	1314	1383
10	13	7	ABSOLUTELY (STORY OF A GIRL) 550 MUSIC/550 WORK		NINE DAYS	1255	1240
11	15	8	SO SAD TO SAY BIG RIG/ISLAND/IOJMG		THE MIGHTY MIGHTY BOSSTONES	1241	1153
12	14	5	JUDITH VIRGIN		A PERFECT CIRCLE	1227	1168
13	11	5	NOTHING AS IT SEEMS EPIC		PEARL JAM	1200	1262
14	12	14	SLEEP NOW IN THE FIRE EPIC		RAGE AGAINST THE MACHINE	1187	1247
15	9	24	MISERABLE RCA		LIT	1153	1338
16	16	5	BENT LAVA/ATLANTIC		MATCHBOX TWENTY	1072	1077
17	17	4	I DISAPPEAR HOLLYWOOD		METALLICA	1038	1028
			★ ★ AIRPOWER ★ ★				
18	27	4	BOYZ-N-THE HOOD FARM CLUB/UNIVERSAL		DYNAMITE HACK	985	783
19	19	12	BREAK STUFF FLIP/INTERSCOPE		LIMP BIZKIT	944	957
			★ ★ AIRPOWER ★ ★				
20	26	5	TAKE A LOOK AROUND HOLLYWOOD		LIMP BIZKIT	931	786
21	24	3	SIMPLE KIND OF LIFE INTERSCOPE		NO DOUBT	900	827
22	25	4	10 DAYS LATE ELEKTRA/VEEG		THIRD EYE BLIND	892	804
23	29	6	LAST RESORT DREAMWORKS		PAPA ROACH	864	691
24	23	26	EVERYTHING YOU WANT RCA		VERTICAL HORIZON	824	830
25	21	13	THE BAD TOUCH REPUBLIC/GEFFEN/INTERSCOPE		BLOODHOUND GANG	789	941
26	18	14	STAND INSIDE YOUR LOVE VIRGIN		THE SMASHING PUMPKINS	763	975
			★ GREATEST GAINER ★				
27	<b>NEW</b>		CHANGE (IN THE HOUSE OF FLIES) MAVERICK		DEFTONES	746	225
28	32	3	PORCELAIN v2		MOBY	742	626
29	30	6	LETTERS CHERRY/UNIVERSAL		STROKE 9	741	691
30	20	9	THE BEST THINGS REPRISE		FILTER	737	942
31	22	13	HOME FLIP/ELEKTRA/VEEG		STAIN'D	732	857
32	33	5	ALL MY FAULT ORIVE-THRU/MCA		FENIX TX	697	625
33	28	17	EX-GIRLFRIEND INTERSCOPE		NO DOUBT	604	745
34	34	8	(ROCK) SUPERSTAR COLUMBIA		CYPRESS HILL	588	586
35	37	3	TOTALIMMORTAL ELEKTRA/VEEG		THE OFFSPRING	581	520
36	35	6	SATISFIED REPRISE		8STOPS7	547	532
37	39	2	AMERICAN BAD ASS TOP DOG/LAVA/ATLANTIC		KID ROCK	544	478
38	38	3	BROADWAY WARNER BROS.		GOO GOO DOLLS	523	511
39	<b>NEW</b>		RIGHT NOW RCA		SR-71	510	296
40	31	11	NEW BEGINNING CAPITOL		STIR	508	687

Songs ranked by number of detections. (▲) Songs showing an increase in detections over the previous week, regardless of chart movement. A song that has been on the chart for more than 20 weeks will generally not receive a bullet, even if it registers an increase in detections. Airpower awarded to songs appearing in the top 20 on both the Airplay and Audience charts for the first time with increases in both detections and audience. Greatest Gainer awarded to the song with the largest increase in detections. Most New Stations awarded to the song registering six or more detections at the most stations for the first time this week. A song with a gain in detections over the previous week is placed first if tied with a decline over the same period. When tied songs are each gaining detections or each losing detections, the song being played on more stations is placed first. Songs below the top 20 become recurrenents and are removed from the chart after 26 weeks.

### GREATEST GAINERS

### MODERN ROCK

INCREASE IN DETECTIONS

<b>DEFTONES • Change (In The House Of Flies) (MAVERICK)</b>	<b>+521</b>
KRAD +50, KWOD +33, KXPK +32, WFNX +22, KROQ +22, KMYZ +19, KROX +18, KNRK +18, WXRK +17, KDGE +16	
<b>EVERCLEAR • Wonderful (CAPITOL)</b>	<b>+294</b>
KWOD +36, WHFS +18, KROQ +18, WWCD +17, KNRK +16, KPNT +16, WKQX +14, KDGE +13, WPLY +12, KEDJ +12	
<b>SR-71 • Right Now (RCA)</b>	<b>+214</b>
WEND +20, KRAD +18, KWOD +15, WFNX +15, KMBY +10, KFMA +9, WXEG +9, WNNX +9, WPLA +8, WCYY +8	
<b>DYNAMITE HACK • Boyz-N-The Hood (FARM CLUB/UNIVERSAL)</b>	<b>+202</b>
KTCL +29, KMYZ +17, KMBY +16, KNRK +16, WKQX +16, WXZZ +15, WXRK +15, KFTE +13, WXEG +13, WZAZ +11	
<b>PAPA ROACH • Last Resort (DREAMWORKS)</b>	<b>+173</b>
KEDJ +20, KROX +14, KITS +12, KNDD +11, WARR +10, KROQ +10, WRZX +9, KXPK +8, KPNT +8, WMRO +7	



# Monitor MODERN ROCK

FOR WEEK ENDING MAY 14, 2000

Compiled from a national sample of data supplied by Broadcast Data Systems  
to Rock Airplay Monitor. All Modern Rock stations are electronically monitored  
24 hours a day, 7 days a week. © 2000 Broadcast Data Systems

## MODERN ROCK AUDIENCE

THIS WEEK	LAST WEEK	WKS. ON CHART	TITLE/IMPRINT/PROMOTION LABEL	ARTIST	AUDIENCE (millions)	
					TW	LW
1	1	9	KRYPTONITE REPUBLIC/UNIVERSAL	3 DOORS DOWN	16.444	15.429
★ ★ ★ NO. 1 ★ ★ ★						
2	2	19	ADAM'S SONG MCA	BLINK-182	13.925	15.360
3	4	12	WITH ARMS WIDE OPEN WIND UP	CREED	12.597	11.709
4	3	26	OTHERSIDE WARNER BROS.	RED HOT CHILI PEPPERS	11.413	13.079
5	5	30	PARDON ME IMMORTAL/EPIC	INCUBUS	11.173	11.223
6	7	8	SOUR GIRL ATLANTIC	STONE TEMPLE PILOTS	10.252	9.881
7	6	22	MISERABLE RCA	LIT	9.582	10.004
8	11	15	MAKE ME BAD IMMORTAL/EPIC	KORN	9.060	8.445
9	13	5	SIMPLE KIND OF LIFE INTERSCOPE	NO DOUBT	8.372	7.720
10	8	14	SLEEP NOW IN THE FIRE EPIC	RAGE AGAINST THE MACHINE	8.309	9.119
11	17	6	TAKE A LOOK AROUND HOLLYWOOD	LIMP BIZKIT	8.193	7.306
12	14	6	JUDITH VIRGIN	A PERFECT CIRCLE	8.193	7.612
13	12	4	I DISAPPEAR HOLLYWOOD	METALLICA	8.096	8.017
14	9	16	VOODOO REPUBLIC/UNIVERSAL	GODSMACK	8.089	8.636
15	10	8	ABSOLUTELY (STORY OF A GIRL) 550 MUSIC/550 WORK	NINE DAYS	7.574	8.459
16	16	12	BREAK STUFF FLIP/INTERSCOPE	LIMP BIZKIT	7.331	7.515
17	20	8	SO SAD TO SAY BIG RIG/ISLAND/IDJMG	THE MIGHTY MIGHTY BOSSTONES	7.284	6.889
18	19	5	PORCELAIN V2	MOBY	7.123	6.901
19	15	5	BENT LAVA/ATLANTIC	MATCHBOX TWENTY	7.113	7.580
20	22	4	BOYZ-N-THE HOOD FARM CLUB/UNIVERSAL	DYNAMITE HACK	6.952	5.757
21	18	5	NOTHING AS IT SEEMS EPIC	PEARL JAM	6.879	7.274
22	21	10	BREAKOUT ROSWELL/RCA	FOO FIGHTERS	6.441	5.898
23	NEW	▶	CHANGE (IN THE HOUSE OF FLIES) MAVERICK	DEFTONES	5.759	1.979
24	28	5	TOTALIMMORTAL ELEKTRA/EEG	THE OFFSPRING	5.287	4.683
25	27	5	10 DAYS LATE ELEKTRA/EEG	THIRD EYE BLIND	5.208	5.060
26	32	2	LAST RESORT DREAMWORKS	PAPA ROACH	5.099	3.699
27	25	24	EVERYTHING YOU WANT RCA	VERTICAL HORIZON	4.840	5.191
28	24	13	THE BAD TOUCH REPUBLIC/GEFFEN/INTERSCOPE	BLOODHOUND GANG	4.643	5.401
29	30	9	(ROCK) SUPERSTAR COLUMBIA	CYPRESS HILL	4.370	4.199
30	26	17	EX-GIRLFRIEND INTERSCOPE	NO DOUBT	4.136	5.107
31	29	11	HOME FLIP/ELEKTRA/EEG	STAIN'D	4.072	4.660
32	31	7	LETTERS CHERRY/UNIVERSAL	STROKE 9	4.023	4.128
33	23	15	STAND INSIDE YOUR LOVE VIRGIN	THE SMASHING PUMPKINS	3.809	5.562
34	NEW	▶	WONDERFUL CAPITOL	EVERCLEAR	3.745	0.134
35	33	3	THE REAL SLIM SHADY WEB/AFTERMATH/INTERSCOPE	EMINEM	3.685	3.681
36	36	6	ALL MY FAULT DRIVE-THRU/MCA	FENIX TX	3.587	3.455
37	38	2	CALIFORNICATION WARNER BROS.	RED HOT CHILI PEPPERS	3.284	2.969
38	40	2	BROADWAY WARNER BROS.	GOO GOO DOLLS	2.945	2.900
39	RE-ENTRY	◀	WHAT IF WIND-UP	CREED	2.915	2.710
40	35	9	NEW BEGINNING CAPITOL	STIR	2.892	3.483

Songs ranked by audience, computed by cross-referencing exact times of airplay with Arbitron listener data. Songs showing an increase in audience over the previous week, regardless of chart movement. A song that has **new** on the chart for more than 20 weeks will generally not receive a bullet, even if it registers an increase in audience. A song with a gain in audience over the previous week is placed first if tied with a song with a decline over the same period. When tied songs are each gaining in audience or each losing in audience, the song being played on more stations is placed first. Songs become recurrent and are removed from this chart in conjunction with the Modern Rock Airplay chart.

## Monitor RECURRENTS MODERN ROCK

RANK	TITLE ARTIST (IMPRINT/PROMOTION LABEL)	DETECTIONS	
		TW	LW
1	THE CHEMICALS BETWEEN US BUSH (TRAUMA)	706	752
2	HIGHER CREED (WIND UP)	663	661
3	RE-ARRANGED LIMP BIZKIT (FLIP/INTERSCOPE)	629	706
4	MY OWN WORST ENEMY LIT (RCA)	574	528
5	LEARN TO FLY FOO FIGHTERS (ROSWELL/RCA)	570	594
6	ALL THE SMALL THINGS BLINK-182 (MCA)	550	581
7	WHAT'S MY AGE AGAIN? BLINK-182 (MCA)	458	463
8	TAKE A PICTURE FILTER (REPRISE)	458	449

RANK	TITLE ARTIST (IMPRINT/PROMOTION LABEL)	DETECTIONS	
		TW	LW
9	SCAR TISSUE RED HOT CHILI PEPPERS (WARNER BROS.)	428	418
10	LITTLE BLACK BACKPACK STROKE 9 (CHERRY/UNIVERSAL)	415	460
11	MUDSHOVEL STAIN'D (FLIP/ELEKTRA/EEG)	381	407
12	THE DOLPHIN'S CRY LIVE (RADIOACTIVE/MCA)	371	404
13	GUERRILLA RADIO RAGE AGAINST THE MACHINE (EPIC)	368	382
14	SHIMMER KORN MAKE ME BAD (550 MUSIC/550 WORK)	356	371
15	HEAVY COLLECTIVE SOUL (ATLANTIC)	331	336
16	BATTLE FLAG LO FIDELITY ALLSTARS (SKINT/SUB POP/COLUMBIA)	326	360
17	FLY AWAY LENNY KRAVITZ (VIRGIN)	311	328
18	EVERLONG FOO FIGHTERS (ROSWELL/CAPITOL)	309	321
19	BEEN CAUGHT STEALING JANE'S ADDICTION (WARNER BROS.)	308	311
20	MAN IN THE BOX ALICE IN CHAINS (COLUMBIA)	299	287

Recurrents are titles that have appeared on the Modern Rock Airplay chart for 26 weeks and have dropped below the top 20.

# Monitor POWER PLAYS MODERN ROCK

FOR WEEK ENDING MAY 14, 2000

First Impressions (FI) denotes songs with 6 or more detections at station for first time this week.

## MOST PLAYED ROCK TRACKS FOR WEEK ENDING MAY 11, 2000

MTV  
Sr. VP/Music: Tom Calderone  
VP/Music & Talent Prog: Michele Dix  
VP/Music & Talent: Elih Cola  
Viacom 212-258-8000

TW	LW	ARTIST	TW	LW
1	24	29	1	24
2	18	16	2	18
3	17	7	3	17
4	14	0	4	14
5	14	3	5	14
6	14	3	6	14
7	13	13	7	13
8	13	14	8	13
9	13	14	9	13
10	12	9	10	12
11	12	15	11	12
12	11	7	12	11
13	11	11	13	11
14	10	0	14	10
15	10	15	15	10
16	8	6	16	8
17	8	6	17	8
18	8	8	18	8
19	8	9	19	8
20	8	9	20	8
21	7	6	21	7
22	6	6	22	6
23	6	6	23	6
24	6	7	24	6
25	5	7	25	5
26	5	7	26	5
27	5	16	27	5
28	4	5	28	4
29	4	5	29	4
30	3	1	30	3

MTV2  
Sr. VP/Music: Tom Calderone  
VP/Music & Talent Prog: Michele Dix  
VP/Music & Talent: Elih Cola  
Viacom 212-258-8000

TW	LW	ARTIST	TW	LW
1	54	20	1	54
2	51	28	2	51
3	50	29	3	50
4	49	15	4	49
5	49	30	5	49
6	48	27	6	48
7	48	27	7	48
8	40	8	8	40
9	40	26	9	40
10	35	28	10	35
11	29	6	11	29
12	29	13	12	29
13	29	15	13	29
14	29	18	14	29
15	28	13	15	28
16	28	14	16	28
17	28	14	17	28
18	27	27	18	27
19	26	17	19	26
20	26	20	20	26
21	21	0	21	21
22	21	0	22	21
23	20	17	23	20
24	19	8	24	19
25	18	8	25	18
26	18	8	26	18
27	18	15	27	18
28	17	16	28	17
29	16	5	29	16
30	15	0	30	15

## WXRK New York

PD: Steve Kingston  
APD: John Loscalzo  
MD: Mike Peer  
Infinity 212-314-9230

TW	LW	ARTIST	TW	LW
1	33	34	1	33
2	32	35	2	32
3	31	24	3	31
4	30	34	4	30
5	29	26	5	29
6	28	11	6	28
7	28	33	7	28
8	25	23	8	25
9	25	26	9	25
10	24	19	10	24
11	23	16	11	23
12	23	16	12	23
13	22	29	13	22
14	21	15	14	21
15	21	15	15	21
16	20	15	16	20
17	20	17	17	20
18	20	21	18	20
19	20	21	19	20
20	18	16	20	18
21	18	16	21	18
22	18	16	22	18
23	18	16	23	18
24	18	16	24	18
25	18	16	25	18
26	18	16	26	18
27	18	16	27	18
28	18	16	28	18
29	18	16	29	18
30	18	16	30	18

## KROQ Los Angeles

VP/Pgm: Kevin Weatherly  
APD: Gene Sandbloom  
MD: Lisa Worden  
Infinity 818-567-1067

TW	LW	ARTIST	TW	LW
1	41	40	1	41
2	39	39	2	39
3	39	40	3	39
4	36	36	4	36
5	36	36	5	36
6	29	29	6	29
7	26	32	7	26
8	26	32	8	26
9	23	23	9	23
10	23	23	10	23
11	23	23	11	23
12	23	23	12	23
13	23	23	13	23
14	23	23	14	23
15	23	23	15	23
16	23	23	16	23
17	23	23	17	23
18	23	23	18	23
19	23	23	19	23
20	23	23	20	23
21	23	23	21	23
22	23	23	22	23
23	23	23	23	23
24	23	23	24	23
25	23	23	25	23
26	23	23	26	23
27	23	23	27	23
28	23	23	28	23
29	23	23	29	23
30	23	23	30	23

## WKQX Chicago

PD: Dave Richards  
MD: Mary Shuminas  
AMD: James VanDsdol  
Emms 312-527-8348

TW	LW	ARTIST	TW	LW
1	43	38	1	43
2	41	17	2	41
3	38	42	3	38
4	36	35	4	36
5	36	35	5	36
6	31	43	6	31
7	23	43	7	23
8	23	43	8	23
9	23	43	9	23
10	23	43	10	23
11	23	43	11	23
12	23	43	12	23
13	23	43	13	23
14	23	43	14	23
15	23	43	15	23
16	23	43	16	23
17	23	43	17	23
18	23	43	18	23
19	23	43	19	23
20	23	43	20	23
21	23	43	21	23
22	23	43	22	23
23	23	43	23	23
24	23	43	24	23
25	23	43	25	23
26	23	43	26	23
27	23	43	27	23
28	23	43	28	23
29	23	43	29	23
30	23	43	30	23

## WBCN Boston

VP/Pgm: Oedipus  
MD: Steve Strick  
AMD: Seth Resler  
Infinity 617-266-1111

TW	LW	ARTIST	TW	LW
1	37	37	1	37
2	35	41	2	35
3	34	34	3	34
4	34	38	4	34
5	34	38	5	34
6	31	38		

Songs ranked by number of detections. Playlists are listed in order of TSA weekly came, beginning with the highest-cumming station. Cumes are updated twice yearly following the release of the spring and fall Arbitron surveys. The number of stations shown each week varies depending upon space. First Impressions (FI) denotes songs with 6 or more detections at station for first time this week.

WNNX Atlanta PD: Leslie Fram APD/MD: Chris Williams Susquehanna 404-266-0997 99X

CIMX Detroit PD: Murray Brookshaw APD: Vince Cannova MD: "Phat" Matt Franklin CHUM Group 519-258-8888 89X

KNDD Seattle PD: Phil Manning MD: Kim Monroe Entercom 206-622-3251 THEend 107.7

XTRA San Diego PD: Bryan Schock MD: Chris Muckley Clear Channel 619-291-9191 9IX

WXDX Pittsburgh PD: John Moschitta APD/MD: Lenny Diana AMFM 412-937-1441 the X at 105.9

WLIR Long Island PD: Gary Cee MD: Andre Ferro Jarad 516-222-1103 WLIR 92.7

KPNT St. Louis DM: Allan Fee MD: Donny Mueller Sinclair 314-231-1057 POINT

WRXZ Indianapolis PD: Scott Jameson MD: Michael Young AMFM 317-257-7565 103

KEDJ Phoenix PD: Paul Krieger APD/MD: Marty Whitney AMFM 602-266-1360 edge 108.3

WMRQ Hartford PD: Dave Hill AMFM 860-723-6160 radio 104

WBRU Providence PD: Tim Schiavelli MD: Becky Pohotski Brown 401-772-9550 93.5 WBRU

KTCL Denver Dir/Pgm: Mike D'Conor Acting PD: F. Poff MD: Sabrina Saunders Clear Channel 303-623-9330 93.3 KTCL

KXPK Denver PD: Mike Stern MD: Melody Lee AMFM 303-832-5665 THE REAL

KWOD Sacramento PD: Ron Bunce AMFM 916-448-5000 KWOD 104.5

WFNX Boston PD: Cruze MD: Laune Gail AMD: Kevin Mays Phoenix Media 781-595-6200 101.7 FNX

KNRK Portland, OR PD/MD: Mark Hamilton Entercom 503-223-1441 94.7 NRS

WRAX Birmingham PD: Dave Rossi APD: Hurricane Shane MD: Suzy Boe Dick Broadcasting 205-945-4646 94.7

WGRD Grand Rapids PD: Dan Clark AMD: Tim Bronson AMFM 616-459-4111 WGRD 97.9

KXKR Salt Lake City PD: Mike Summers APD/MD: Todd Nokem Simmons 801-524-2600 X106.3

WEND Charlotte OM/PD: Jack Daniel APD/MD: Kristen Pettus Dalton Group 704-338-9600 106.5

KXTE Las Vegas PD: Dave Wellington APD: Chris Ripley Infinity 702-889-7500 X107.5

KCXX Riverside/San Bernardino PD: Kelli Cluque APD: John De Santis MD: Lisa Axe All Pro 909-384-1039 105.9

WEDG Buffalo OM: John Hager PD: Rich Watt MD: Ryan Patrick Citadel 716-881-4555 103.3 EDGE

KENZ Salt Lake City PD: Bruce Jones MD: Andrea Cappmayer Citadel 801-470-1075 107.5 the end.

Songs ranked by number of detections. Playlists are listed in order of TSA weekly... First Impressions (FI) denotes songs with 6 or more detections at station for first time this week.

KFRR Fresno PD: Bruce Wayne... 1 Cypress Hill (Rock) Superstar... 2 3 Doors Down Kryptonite...

KKND New Orleans OM: Dave Stewart... 1 Rage Against The Machine Sleep Now In The... 2 Godsmack Woodoo...

WPBZ West Palm Beach OM/MD: John O'Connell... 1 Red Hot Chili Peppers Otherside... 2 3 Doors Down Kryptonite...

WROX Norfolk PD/MD: Holly Williams... 1 Limp Bizkit Break Stuff... 2 Pearl Jam Nothing As It Seems...

KROX Austin OM: Jeff Carrol... 1 Incubus Pardon Me... 2 Rage Against The Machine Sleep Now In The...

WPLA Jacksonville PD: Rick Schmidt... 1 Nine Days Absolutely (Story Of A Girl)... 2 Incubus Pardon Me...

KMYZ Tulsa PD: Lynn Barlow... 1 Staind Home... 2 Godsmack Woodoo...

WZAZ Columbus OM: Todd Shannon... 1 Lit Miserable... 2 Vertical Horizon Everything You Want...

WXEG Dayton PD: Mike Thomas... 1 Limp Bizkit Re-arranged... 2 Vertical Horizon Everything You Want...

WCYU Portland, ME PD: Herb Ivy... 1 Creed With Arms Wide Open... 2 3 Doors Down Kryptonite...

KTEG Albuquerque PD: Ellen Flaherty... 1 Static-X Push It... 2 Bloodhound Gang The Bad Touch...

KFMA Tuscon PD: Chuck Roast... 1 Metallica I Disappear... 2 3 Doors Down Kryptonite...

WWCD Columbus PD/MD: Andy Davis... 1 Live Run To This World... 2 Pearl Jam Nothing As It Seems...

KAEP Spokane OM: Ray Edwards... 1 Stone Temple Pilots Sour Girl... 2 Matchbox Twenty Bent...

WNFZ Knoxville PD: Dan Bozky... 1 Metallica I Disappear... 2 Stone Temple Pilots Sour Girl...

KPOI Honolulu Dir. Pgm: Brock Whaley... 1 Lit Miserable... 2 3 Doors Down Kryptonite...

WBX Fort Myers PD/MD: Lee Daniels... 1 Nine Days Absolutely (Story Of A Girl)... 2 3 Doors Down Kryptonite...

WEQX Albany PD: Kyle Gudeman... 1 Blink-182 Adam's Song... 2 Red Hot Chili Peppers Otherside...

WAVF Charleston, SC OM: Miles Crosby... 1 Vertical Horizon Everything You Want... 2 3 Doors Down Kryptonite...

WXNR Greenville, NC PD: B.K. Kirkland... 1 Creed With Arms Wide Open... 2 Red Hot Chili Peppers Otherside...

WKRL Syracuse PD/MD: Mimi Griswold... 1 A Perfect Circle Judith... 2 Limp Bizkit Break Stuff...

WXZZ Lexington OM: Lee Reynolds... 1 Creed With Arms Wide Open... 2 Blink-182 Adam's Song...

WARQ Columbia, SC PD: Gina Juliano... 1 3 Doors Down Kryptonite... 2 Incubus Pardon Me...

KLEC Little Rock PD: Larry LeBlanc... 1 Korn Make Me Bad... 2 Godsmack Woodoo...



Detained listings for songs with an increase in airplay. Total Detentions: 0. Chart items not included unless they were listed in previous week.

3 DOORS DOWN 2237/143

Kryptonite (Republic/Universal) Total Stations: 63 Chart Move: 1-1

Table with columns for station, ID, and airplay data for 3 Doors Down.

8STOPS7 547/15

Satisfied (Reprise) Total Stations: 34 Chart Move: 35-36

Table with columns for station, ID, and airplay data for 8Stops7.

CREED 1712/138

With Arms Wide Open (Wind-up) Total Stations: 60 Chart Move: 5-4

Table with columns for station, ID, and airplay data for Creed.

CYPRESS HILL 588/2

(Rock) Superstar (Columbia) Total Stations: 38 Chart Move: 34-34

Table with columns for station, ID, and airplay data for Cypress Hill.

DEFTONES 746/521

Change (In The House Of Flies) (Maverick) Total Stations: 56 Chart Move: Debut 27

Table with columns for station, ID, and airplay data for Deftones.

DYNAMITE HACK 985/202

Boyz-N-The Hood (Farm Club/Universal) Total Stations: 49 Chart Move: 27-18

Table with columns for station, ID, and airplay data for Dynamite Hack.

ELWOOD 362/92

Sundown (Palm Pictures) Total Stations: 33

Table with columns for station, ID, and airplay data for Elwood.

EMINEM 380/48

The Real Slim Shady (Web/Aftermath/Interscope) Total Stations: 33

Table with columns for station, ID, and airplay data for Eminem.

EVERCLEAR 312/294

Wonderful (Capitol) Total Stations: 34

Table with columns for station, ID, and airplay data for Everclear.

FENIX TX 697/72

All My Fault (Drive-thru/MCA) Total Stations: 44 Chart Move: 33-32

Table with columns for station, ID, and airplay data for Fenix TX.

FOO FIGHTERS 1382/79

Breakout (Roswell/RCA) Total Stations: 63 Chart Move: 10-8

Table with columns for station, ID, and airplay data for Foo Fighters.

GOO GOO DOLLS 523/12

Broadway (Warner Bros.) Total Stations: 26 Chart Move: 38-38

Table with columns for station, ID, and airplay data for Goo Goo Dolls.

BEN HARPER AND THE INNOCENT CRIMINALS 272/25

Steal My Kisses (Virgin) Total Stations: 20

Table with columns for station, ID, and airplay data for Ben Harper.

KID ROCK 544/66

American Bad Ass (Top Dog/Lava/AntiL) Total Stations: 43 Chart Move: 39-37

Table with columns for station, ID, and airplay data for Kid Rock.

KORN 1408/32

Make Me Bad (Immortal/Epic) Total Stations: 62 Chart Move: 8-7

Table with columns for station, ID, and airplay data for Korn.

Continued tracking for songs with an increase in detections. Some Detections/Gain data and include other data. Markets listed in order of population.

LIMP BIZKIT		931/145		METALLICA		1038/10		THE MIGHTY MIGHTY BOSSTONES		1241/88		MOBY		742/116		NINE DAYS		1255/15		
Take A Look Around (Hollywood)		Chart Move: 26-20		I Disappear (Hollywood)		Chart Move: 17-17		So Sad To Say (Big Rig/Island/IDJMG)		Chart Move: 15-11		Porcelain (V2)		Chart Move: 32-28		Absolutely (Story Of A Girl) (550 Music/550-Work)		Chart Move: 13-10		
Total Stations: 58		Chart Move: 26-20		Total Stations: 47		Chart Move: 17-17		Total Stations: 63		Chart Move: 15-11		Total Stations: 52		Chart Move: 32-28		Total Stations: 48		Chart Move: 13-10		
TW LW ZW ID		TW LW ZW ID		TW LW ZW ID		TW LW ZW ID		TW LW ZW ID		TW LW ZW ID		TW LW ZW ID		TW LW ZW ID		TW LW ZW ID		TW LW ZW ID		
New York	MTV	17	18	11	New Or.	KKND	14	5	8	54	New York	MTV	8	8	18	New Or.	KKND	1	1	13
L.A.	WXRK	18	17	11	Hartford	WMRO	15	16	18	87	L.A.	WXRK	9	6	23	Hartford	WMRO	9	1	12
Chicago	KROQ	39	39	20	Buffalo	WEDG	10	15	24	183	Chicago	KROQ	38	36	306	Buffalo	WEDG	1	1	2
San Fran	WKQX	16	15	12	Mon/Ocean	WHTG	23	23	16	81	San Fran	WKQX	35	45	37	Mon/Ocean	WHTG	15	16	11
Phila	KITS	32	23	17	Austin	KROX	26	14	9	62	Phila	KITS	33	34	31	Austin	KROX	20	19	13
Dallas	WPLY	1	1	2	W.PBeach	WPBZ	27	28	23	92	Dallas	WPLY	15	4	21	W.PBeach	WPBZ	12	8	21
Detroit	KDGE	15	7	29	Jacksonv.	WPLA	1	1	2	97	Detroit	KDGE	15	4	21	Jacksonv.	WPLA	1	1	2
Boston	CIMX	26	26	130	Birming.	WRAX	14	15	4	45	Boston	CIMX	4	1	13	Birming.	WRAX	6	1	6
Wash.,DC	WFNX	13	14	162	Richmond	WDYL	27	29	24	138	Wash.,DC	WFNX	28	22	30	Richmond	WDYL	1	1	3
Houston	WBWCN	31	28	28	Dayton	WXEG	1	1	3	8	Houston	WBWCN	19	15	40	Dayton	WXEG	1	1	3
Atlanta	WFNX	47	46	142	Albany	WEOX	2	2	5	90	Atlanta	WFNX	20	14	17	Albany	WEOX	35	13	68
Seattle	WVDC	18	21	117	Honolulu	KPOI	6	6	6	6	Seattle	WVDC	25	35	36	Honolulu	KPOI	5	3	8
San Diego	KTBB	1	1	1	Tucson	KFMA	12	11	15	81	San Diego	KTBB	1	1	1	Tucson	KFMA	14	11	13
Phoenix	WNNX	22	19	20	Tulsa	KMYZ	14	9	3	26	Phoenix	WNNX	35	34	33	Tulsa	KMYZ	1	1	2
St. Louis	KNDD	25	26	150	Fresno	KFRF	26	31	33	118	St. Louis	KNDD	19	17	20	Fresno	KFRF	7	6	19
Pitts.	XTRA	1	1	1	Gr.Rap	WGRD	1	1	1	1	Pitts.	XTRA	22	23	18	Gr.Rap	WGRD	1	1	1
Denver	KEDJ	25	18	11	Knov.	WNFZ	33	35	31	177	Denver	KEDJ	1	1	1	Knov.	WNFZ	1	1	1
Port.,OR	WLIR	1	1	1	Fl. Myers	WJXB	24	16	2	42	Port.,OR	WLIR	35	33	27	Fl. Myers	WJXB	1	1	1
Cincinnati	KPNT	8	8	10	Albuq.	KTEG	9	9	9	9	Cincinnati	KPNT	1	1	1	Albuq.	KTEG	1	1	1
Rivers.	WXDX	16	8	10	Monterey	KMBY	1	1	1	5	Rivers.	WXDX	10	18	49	Monterey	KMBY	1	1	1
Sacram.	KTCL	1	1	1	Syracuse	WKRL	1	1	1	3	Sacram.	KTCL	4	9	4	Syracuse	WKRL	16	13	10
Provid.	KXPK	23	28	29	New Bern	WXNR	20	14	2	122	Provid.	KXPK	1	1	1	New Bern	WXNR	3	3	3
Colum.,OH	KNRK	26	26	25	L.Rock	KLEC	28	26	24	131	Colum.,OH	KNRK	24	21	18	L.Rock	KLEC	2	2	2
Salt Lake	WOXY	1	1	1	Charl.,SC	WAVF	1	1	1	1	Salt Lake	WOXY	18	18	19	Charl.,SC	WAVF	17	2	10
Norfolk	KCXX	11	7	10	Col.,SC	WARQ	18	13	7	38	Norfolk	KCXX	6	6	5	Col.,SC	WARQ	8	1	10
Charl.,NC	KWOD	19	4	26	Spokane	KAEP	1	2	3	8	Charl.,NC	KWOD	17	9	1	Spokane	KAEP	23	15	14
Indian.	WBUR	16	17	14	Lafayette	KFTE	15	11	4	30	Indian.	WBUR	9	11	9	Lafayette	KFTE	1	1	1
Las Vegas	WWCD	2	2	2	Lex.,KY	WXZZ	2	1	1	4	Las Vegas	WWCD	16	16	4	Lex.,KY	WXZZ	18	11	21
	WZAZ	2	2	2	C.Chnsti	KRAD	20	3	23	2		WZAZ	14	7	21	C.Chnsti	KRAD	1	1	1
	KXKZ	19	17	13	Savannah	WVWV	2	2	2	2		KXKZ	18	19	15	Savannah	WVWV	1	1	1
	WRDX	20	22	18	Port.,ME	WCYY	2	2	1	3		WRDX	18	19	15	Port.,ME	WCYY	24	20	12
	WEND	13	10	11	Burling.	WBZT	14	5	19	19		WEND	1	1	2	Burling.	WBZT	22	22	12
	WRZK	5	6	6	Toronto	CFNY	15	12	11	77		WRZK	1	1	4	Toronto	CFNY	1	1	20
	KXTE	18	20	17								KXTE	18	20	17					

NO DOUBT		900/73		THE OFFSPRING		581/61		PAPA ROACH		864/173		A PERFECT CIRCLE		1227/59		RED HOT CHILI PEPPERS		259/29		
Simple Kind Of Life (Interscope)		Chart Move: 24-21		Totalimmortal (Elektra/EEG)		Chart Move: 37-35		Last Resort (DreamWorks)		Chart Move: 29-23		Judith (Virgin)		Chart Move: 14-12		Californication (Warner Bros.)		Chart Move: 13-10		
Total Stations: 53		Chart Move: 24-21		Total Stations: 43		Chart Move: 37-35		Total Stations: 52		Chart Move: 29-23		Total Stations: 63		Chart Move: 14-12		Total Stations: 16		Chart Move: 13-10		
TW LW ZW ID		TW LW ZW ID		TW LW ZW ID		TW LW ZW ID		TW LW ZW ID		TW LW ZW ID		TW LW ZW ID		TW LW ZW ID		TW LW ZW ID		TW LW ZW ID		
New York	MTV	13	14	14	New Or.	KKND	1	1	4	New York	MTV	2	1	1	New Or.	KKND	16	17	12	
L.A.	WXRK	4	7	27	Hartford	WMRO	9	4	15	L.A.	WXRK	29	26	29	Hartford	WMRO	2	1	10	
Chicago	KROQ	35	38	205	Buffalo	WEDG	6	8	8	22	Chicago	KROQ	28	23	125	Buffalo	WEDG	13	15	71
San Fran	WKQX	36	35	34	Mon/Ocean	WHTG	15	15	12	27	San Fran	WKQX	8	9	10	Mon/Ocean	WHTG	1	1	1
Phila	KITS	21	17	14	Austin	KROX	14	14	12	17	Phila	KITS	27	25	148	Austin	KROX	31	28	27
Dallas	WPLY	1	1	1	W.PBeach	WPBZ	12	15	15	121	Dallas	WPLY	1	2	6	W.PBeach	WPBZ	24	23	100
Detroit	KDGE	15	19	10	Jacksonv.	WPLA	1	1	4	68	Detroit	KDGE	27	29	217	Jacksonv.	WPLA	8	9	41
Boston	CIMX	15	19	10	Birming.	WRAX	7	2	11	11	Boston	CIMX	34	35	29	Birming.	WRAX	11	7	14
Wash.,DC	WFNX	26	11	12	Dayton	WXEG	1	1	3	8	Wash.,DC	WFNX	20	15	19	Dayton	WXEG	1	1	4
Houston	WBWCN	31	28	28	Richmond	WDYL	24	21	45	Houston	WBWCN	16	16	14	Richmond	WDYL	12	13	45	
Atlanta	WFNX	47	46	142	Albany	WEOX	1	2	5	15	Atlanta	WFNX	6	16	9	Albany	WEOX	1	1	4
Seattle	WVDC	18	21	117	Honolulu	KPOI	8	6	7	65	Seattle	WVDC	6	6	5	Honolulu	KPOI	5	2	4
San Diego	KTBB	1	1	1	Tucson	KFMA	8	6	13	41	San Diego	KTBB	7	1	12	Tucson	KFMA	14	11	25
Phoenix	WNNX	22	19	20	Tulsa	KMYZ	1	3	6	6	Phoenix	WNNX	12	12	12	Tulsa	KMYZ	25	28	184
St. Louis	KNDD	25	26	150	Fresno	KFRF	26	31	33	118	St. Louis	KNDD	10	49	43	Fresno	KFRF	25	28	98
Pitts.	XTRA	1	1	1	Gr.Rap	WGRD	1	1	1	1	Pitts.	XTRA	13	11	12	Gr.Rap	WGRD	1	1	4
Denver	KEDJ	25	18	11	Knov.	WNFZ	33	35	31	177	Denver	KEDJ	30	26	34	Knov.	WNFZ	19	20	17
Port.,OR	WLIR	1	1	1	Fl. Myers	WJXB	24	16	2	42	Port.,OR	WLIR	35	33	27	Fl. Myers	WJXB	1	1	1
Cincinnati	KPNT	8	8	10	Albuq.	KTEG	9	9	9	9	Cincinnati	KPNT	1	1	1	Albuq.	KTEG	20	16	9
Rivers.	WXDX	16	8	10	Monterey	KMBY	1	1	1	5	Rivers.	WXDX	21	21	112	Monterey	KMBY	54	57	52
Sacram.	KTCL	1	1	1	Syracuse	WKRL	1	1	1	3	Sacram.	KTCL	1	1	1	Syracuse	WKRL	39	32	123
Provid.	KXPK	23	28	29	New Bern	WXNR	20	14	2	122	Provid.	KXPK	46	44	248	New Bern	WXNR	13	12	48
Colum.,OH	KNRK	26	26	25	L.Rock	KLEC	28	26	24	131	Colum.,OH	KNRK	11	12	12	L.Rock	KLEC	27	25	30
Salt Lake	WOXY	1	1	1	Charl.,SC	WAVF	1	1	1	1	Salt Lake	WOXY	6	6	5	Charl.,SC	WAVF	16	13	18
Norfolk	KCXX	11	7	10	Col.,SC	WARQ	18	13	7	38	Norfolk	KCXX	13	10	12	Col.,SC	WARQ	29	26	114
Charl.,NC	KWOD	19	4	26	Spokane	KAEP	1	2	3	8	Charl.,NC	KWOD	17	9	1	Spokane	KAEP	1	1	1
Indian.	WBUR	16	17	14	Lafayette	KFTE	15	11	4	30	Indian.	WBUR	9	11	9	Lafayette	KFTE	17	14	16
Las Vegas	WWCD	2	2	2	Lex.,KY	WXZZ	2	1	1	4	Las Vegas	WWCD	15	12	29	Lex.,KY	WXZZ	11	12	46
	WZAZ	2	2	2	C.Chnsti	KRAD	20	3	23	2		WZAZ	1	1	4	C.Chnsti	KRAD	58	57	277
	KXKZ	19	17	13	Savannah	WVWV	2	2	2	2										



Compiled from a national sample of data supplied by Broadcast Data Systems to Rock Airplay Monitor. 106 mainstream rock stations are electronically monitored 24 hours a day, 7 days a week. © 2000 Billboard/BPI Communications.

THIS WEEK	LAST WEEK	WKS. ON CHART	MAINSTREAM ROCK AIRPLAY		DETECTIONS		
			TITLE/IMPRINT/PROMOTION LABEL	ARTIST	TW	LW	
			★ ★ ★ NO. 1 ★ ★ ★				
1	1	17	KRYPTONITE REPUBLIC/UNIVERSAL	3 DOORS DOWN	2553	2523	
2	2	4	I DISAPPEAR HOLLYWOOD	METALLICA	2103	1997	
			★ GREATEST GAINER ★				
3	5	6	WITH ARMS WIDE OPEN WIND-UP	CREED	1745	1509	
4	4	5	NOTHING AS IT SEEMS EPIC	PEARL JAM	1597	1605	
5	3	18	OTHERSIDE WARNER BROS.	RED HOT CHILI PEPPERS	1523	1730	
6	6	6	SOUR GIRL ATLANTIC	STONE TEMPLE PILOTS	1289	1180	
7	7	5	JUDITH VIRGIN	A PERFECT CIRCLE	1220	1106	
8	9	13	LEADER OF MEN ROADRUNNER	NICKELBACK	1086	1084	
9	8	28	VOODOO REPUBLIC/UNIVERSAL	GODSMACK	1000	1084	
10	12	26	PARDON ME IMMORTAL/EPIC	INCUBUS	992	999	
11	13	16	HOME FLIP/ELEKTRA/EEG	STAIN'D	982	975	
12	11	15	MAKE ME BAD IMMORTAL/EPIC	KORN	976	988	
13	15	21	WHAT IF WIND-UP	CREED	904	922	
14	16	38	HIGHER WIND-UP	CREED	888	883	
15	14	26	NO LEAF CLOVER ELEKTRA/EEG	METALLICA	881	944	
16	10	15	STIFF UPPER LIP EASTWEST/EEG	AC/DC	855	1036	
17	18	6	GODLESS EPIC	U.P.O.	836	775	
18	17	9	SILVER FUTURE RESTLESS	MONSTER MAGNET	807	810	
19	28	3	BREAKOUT ROSWELL/RCA	FOO FIGHTERS	665	566	
			★ ★ AIRPOWER ★ ★				
20	23	13	BREAK STUFF FLIP/INTERSCOPE	LIMP BIZKIT	661	640	
21	20	23	ONLY GOD KNOWS WHY TOP DOG/LAVA/ATLANTIC	KID ROCK	627	683	
22	24	14	SLEEP NOW IN THE FIRE EPIC	RAGE AGAINST THE MACHINE	625	643	
23	22	8	WORKIN' IT WARNER BROS.	DON HENLEY	607	656	
24	29	3	AMERICAN BAD ASS TOP DOG/LAVA/ATLANTIC	KID ROCK	586	503	
25	30	9	NOW YOU KNOW THE ENCLAVE/ISLAND/DJMG	FULL DEVIL JACKET	577	496	
26	21	11	WHAT IS AND WHAT SHOULD NEVER BE MUSICMAKER.COM	JIMMY PAGE & THE BLACK CROWES	575	676	
27	19	12	NEW BEGINNING CAPITOL	STIR	571	708	
28	34	3	WARM MACHINE TRAUMA	BUSH	563	445	
29	27	12	SATISFIED REPRISE	8STOPS7	563	591	
30	26	4	BENT LAVA/ATLANTIC	MATCHBOX TWENTY	555	577	
31	37	4	LAST RESORT DREAMWORKS	PAPA ROACH	482	410	
32	25	9	NOTHING TO PROVE HOLLYWOOD	CAROLINE'S SPINE	455	580	
33	33	10	REVOLUTION IS MY NAME EASTWEST/EEG	PANTERA	424	484	
34	36	14	WAFFLE TVT	SEVENDUST	403	421	
35	38	2	STUPIFY GIANI/REPRISE	DISTURBED	393	384	
36	35	7	THE BEST THINGS REPRISE	FILTER	387	454	
37	31	9	SPIDERS AMERICAN/COLUMBIA	SYSTEM OF A DOWN	374	510	
38	NEW		TAKE A LOOK AROUND HOLLYWOOD	LIMP BIZKIT	365	332	
39	NEW		HOLY MAN V2	ONE MINUTE SILENCE	349	342	
40	NEW		FIRST TRIP TO THE MOON KOCH	THE NIXONS	343	310	

Songs ranked by number of detections. ○ Songs showing an increase in detections over the previous week, regardless of chart movement. A song that has been on the chart for more than 20 weeks will generally not receive a bullet, even if it registers an increase in detections. Airpower awarded to songs appearing in the top 20 on both the Airplay and Audience charts for the first time with increases in both detections and audience. Greatest Gainer awarded to the song with the largest increase in detections. Most New Stations awarded to the song registering six or more detections at the most stations for the first time this week. A song with a gain in detections over the previous week is placed first if tied with a song with a decline over the same period. When tied songs are each gaining detections or each losing detections, the song being played on more stations is placed first. Songs below the top 20 become recurrends and are removed from the chart after 26 weeks.

## GREATEST GAINERS MAINSTREAM ROCK

**INCREASE IN DETECTIONS**

**CREED • With Arms Wide Open (WIND-UP) +236**  
WTFX +18, WAPL +15, WXRA +13, KAZR +13, WXBE +12, WXTB +12, KTAL +12, WZTA +11, WIYY +10, WIZN +9

**DEFTONES • Change (In The House Of Flies) (MAVERICK) +189**  
KAZR +23, WKLQ +20, WXTM +20, WAAF +14, WCCC +11, WNOR +10, WQXA +9, KILQ +8, KRCC +7, KUFO +7

**JESSE JAMES DUPREE • Mainline (v2) +133**  
KQRC +14, WXBE +10, KZRQ +8, KOMP +8, KLBJ +8, WKSJ +7, KICT +7, KATT +7, WTPJ +6, WOTT +5

**PAUL RODGERS • Drifters (CMC INTERNATIONAL) +122**  
WOTT +12, WZZO +12, KTYD +10, WEGR +10, WKSJ +8, WKLC +8, WROO +7, KRZZ +6, WAFX +6, KGGO +6

**BUSH • Warm Machine (TRAUMA) +118**  
KISW +17, WVRK +12, KNCN +11, KHTQ +8, KTUX +8, WXBE +7, WXTB +7, WKLQ +7, WRZK +6, WMFS +6

THIS WEEK	LAST WEEK	WKS. ON CHART	MAINSTREAM ROCK AUDIENCE		AUDIENCE (millions)		
			TITLE/IMPRINT/PROMOTION LABEL	ARTIST	TW	LW	
			★ ★ ★ NO. 1 ★ ★ ★				
1	1	17	KRYPTONITE REPUBLIC/UNIVERSAL	3 DOORS DOWN	15.734	14.783	
2	2	4	I DISAPPEAR HOLLYWOOD	METALLICA	11.977	11.714	
3	4	9	WITH ARMS WIDE OPEN WIND-UP	CREED	9.684	8.536	
4	3	19	OTHERSIDE WARNER BROS.	RED HOT CHILI PEPPERS	9.255	9.928	
5	5	5	NOTHING AS IT SEEMS EPIC	PEARL JAM	7.713	8.080	
6	7	26	NO LEAF CLOVER ELEKTRA/EEG	METALLICA	6.270	6.521	
7	6	28	VOODOO REPUBLIC/UNIVERSAL	GODSMACK	6.148	6.537	
8	8	38	HIGHER WIND-UP	CREED	6.035	6.048	
9	9	22	WHAT IF WIND-UP	CREED	5.977	5.948	
10	10	6	JUDITH VIRGIN	A PERFECT CIRCLE	5.825	5.735	
11	13	6	SOUR GIRL ATLANTIC	STONE TEMPLE PILOTS	5.632	5.133	
12	11	24	PARDON ME IMMORTAL/EPIC	INCUBUS	5.557	5.410	
13	14	15	MAKE ME BAD IMMORTAL/EPIC	KORN	5.261	5.099	
14	12	13	LEADER OF MEN ROADRUNNER	NICKELBACK	5.199	5.185	
15	16	16	HOME FLIP/ELEKTRA/EEG	STAIN'D	4.469	4.372	
16	17	23	ONLY GOD KNOWS WHY TOP DOG/LAVA/ATLANTIC	KID ROCK	3.883	4.103	
17	15	15	STIFF UPPER LIP EASTWEST/EEG	AC/DC	3.614	4.750	
18	18	13	SLEEP NOW IN THE FIRE EPIC	RAGE AGAINST THE MACHINE	3.597	3.875	
19	20	6	GODLESS EPIC	U.P.O.	3.479	3.367	
20	21	12	BREAK STUFF FLIP/INTERSCOPE	LIMP BIZKIT	3.405	3.290	
21	19	11	WHAT IS AND WHAT SHOULD NEVER BE MUSICMAKER.COM	JIMMY PAGE & THE BLACK CROWES	3.050	3.754	
22	24	4	WARM MACHINE TRAUMA	BUSH	3.007	2.726	
23	23	9	SILVER FUTURE RESTLESS	MONSTER MAGNET	2.715	2.841	
24	30	3	BREAKOUT ROSWELL/RCA	FOO FIGHTERS	2.519	2.148	
25	25	11	NEW BEGINNING CAPITOL	STIR	2.481	2.732	
26	28	8	WORKIN' IT WARNER BROS.	DON HENLEY	2.473	2.414	
27	26	3	AMERICAN BAD ASS TOP DOG/LAVA/ATLANTIC	KID ROCK	2.431	2.527	
28	27	5	BENT LAVA/ATLANTIC	MATCHBOX TWENTY	2.427	2.504	
29	29	14	WAFFLE TVT	SEVENDUST	2.236	2.335	
30	22	9	YOUNG LUST (LIVE) COLUMBIA	PINK FLOYD	2.023	2.887	
31	37	7	NOW YOU KNOW THE ENCLAVE/ISLAND/DJMG	FULL DEVIL JACKET	1.963	1.571	
32	32	10	SATISFIED REPRISE	8STOPS7	1.809	1.971	
33	34	9	REVOLUTION IS MY NAME EASTWEST/EEG	PANTERA	1.724	1.779	
34	38	2	LAST RESORT DREAMWORKS	PAPA ROACH	1.714	1.522	
35	33	9	NOTHING TO PROVE HOLLYWOOD	CAROLINE'S SPINE	1.690	1.901	
36	36	5	TAKE A LOOK AROUND HOLLYWOOD	LIMP BIZKIT	1.643	1.578	
37	39	13	MISERABLE RCA	LIT	1.472	1.474	
38	35	7	THE BEST THINGS REPRISE	FILTER	1.448	1.609	
39	31	14	STAND INSIDE YOUR LOVE VIRGIN	THE SMASHING PUMPKINS	1.369	2.035	
40	NEW		CHANGE (IN THE HOUSE OF FLIES) MAVERICK	DEFTONES	1.353	0.541	

Songs ranked by audience, computed by cross-referencing exact times of airplay with Arbitron listener data. ○ Songs showing an increase in audience over the previous week, regardless of chart movement. A song that has been on the chart for more than 20 weeks will generally not receive a bullet, even if it registers an increase in audience. A song with a gain in audience over the previous week is placed first if tied with a song with a decline over the same period. When tied songs are each gaining in audience or each losing in audience, the song being played on more stations is placed first. Songs become recurrends and are removed from this chart in conjunction with the Mainstream Rock Airplay chart.

## Monitor RECURRENTS MAINSTREAM ROCK

RANK	TITLE ARTIST (IMPRINT/PROMOTION LABEL)	DETECTIONS	
		TW	LW
9	TOM SAWYER RUSH (MERCURY/DJMG)	411	394
10	SWEET EMOTION AEROSMITH (COLUMBIA)	404	392
11	SWEET CHILD O' MINE GUNS N' ROSES (Geffen/Interscope)	398	419
12	ONE CREED (WIND-UP)	395	379
13	YOU SHOOK ME ALL NIGHT LONG AC/DC (ATLANTIC)	378	404
14	LIT UP BUCKCHERRY (DREAMWORKS)	366	364
15	WELCOME TO THE JUNGLE GUNS N' ROSES (Geffen/Interscope)	363	356
16	INTERSTATE LOVE SONG STONE TEMPLE PILOTS (ATLANTIC)	363	381
17	BLUE ON BLACK KENNY WAYNE SHEPHERD BAND (REVOLUTION/REPRISE)	355	387
18	PARADISE CITY GUNS N' ROSES (Geffen/Interscope)	346	342
19	DRAGULA ROB ZOMBIE (Geffen/Interscope)	346	321
20	TOUCH, PEEL AND STAND DAYS OF THE NEW (OUTPOST/INTERSCOPE)	343	331

Recurrends are titles that have appeared on the Mainstream Rock Airplay chart for 26 weeks and have dropped below the top 20.

Songs ranked by number of detections. Playlists are listed in order of TSA weekly cum, beginning with the highest-cumming station. Cumes are updated twice yearly following the release of the spring and fall Arbitron surveys. The number of stations shown each week varies depending upon space. First Impressions (FI) denotes songs with 6 or more detections at station for first time this week.

MOST PLAYED ROCK TRACKS FOR WEEK ENDING 05/14/00

Table for station VH1, listing tracks like 'Red Hot Chili Peppers, Otherside' and 'Creed With Arms Wide Open'.

WYSP Philadelphia

Table for station WYSP, listing tracks like '3 Doors Down Kryptonite' and 'Creed With Arms Wide Open'.

KEGL Dallas

Table for station KEGL, listing tracks like '3 Doors Down Kryptonite' and 'Creed With Arms Wide Open'.

WRIF Detroit

Table for station WRIF, listing tracks like 'Creed With Arms Wide Open' and '3 Doors Down Kryptonite'.

KSJO San Francisco

Table for station KSJO, listing tracks like 'Soundgarden Outshined' and 'Godsmack Keep Away'.

WAFF Boston

Table for station WAFF, listing tracks like 'Rage Against The Machine Sleep Now In The' and 'A Perfect Circle Judith'.

WMMS Cleveland

Table for station WMMS, listing tracks like 'Metallica I Disappear' and 'Godsmack Voodoo'.

WZTA Miami

Table for station WZTA, listing tracks like '3 Doors Down Kryptonite' and 'Creed With Arms Wide Open'.

KXXR Minneapolis

Table for station KXXR, listing tracks like '3 Doors Down Kryptonite' and 'Creed With Arms Wide Open'.

KQRC Kansas City

Table for station KQRC, listing tracks like 'Godsmack Voodoo' and '3 Doors Down Kryptonite'.

KISS San Antonio

Table for station KISS, listing tracks like 'Red Hot Chili Peppers Otherside' and '3 Doors Down Kryptonite'.

WXTB Tampa

Table for station WXTB, listing tracks like '3 Doors Down Kryptonite' and 'Metallica I Disappear'.

WIYY Baltimore

Table for station WIYY, listing tracks like '3 Doors Down Kryptonite' and 'Metallica I Disappear'.

KISW Seattle

Table for station KISW, listing tracks like 'Metallica I Disappear' and 'The Smashing Pumpkins Stand Inside Your Love'.

WJRR Orlando

Table for station WJRR, listing tracks like '3 Doors Down Kryptonite' and 'Creed What If'.

WLZR Milwaukee

Table for station WLZR, listing tracks like 'Creed What If' and 'Godsmack Voodoo'.

KIOZ San Diego

Table for station KIOZ, listing tracks like 'Limp Bizkit Break Stuff' and '3 Doors Down Kryptonite'.

WBZX Columbus

Table for station WBZX, listing tracks like 'Metallica I Disappear' and 'Creed What If'.

KBPI Denver

Table for station KBPI, listing tracks like '3 Doors Down Kryptonite' and 'Metallica I Disappear'.

WCCC Hartford

Table for station WCCC, listing tracks like 'Staind Home' and 'Incubus Pardon Me'.

KUFO Portland

Table for station KUFO, listing tracks like 'Korn Make Me Bad' and '3 Doors Down Kryptonite'.

WQXA Harrisburg

Table for station WQXA, listing tracks like 'Korn Make Me Bad' and 'Creed With Arms Wide Open'.

KUPD Phoenix

Table for station KUPD, listing tracks like 'A Perfect Circle Judith' and '3 Doors Down Kryptonite'.

WXTM St. Louis

Table for station WXTM, listing tracks like 'A Perfect Circle Judith' and 'Metallica I Disappear'.



Songs ranked by number of detections. Playlists are listed in order of TSA weekly come, beginning with the highest-cumming station. Cumes are updated twice yearly following the release of the spring and fall Arbitron surveys. The number of stations shown each week varies depending upon space.  
First Impressions (FI) denotes songs with 6 or more detections at station for first time this week.

**KATT Oklahoma City**  
PD: Chris Baker  
MD: Jake Daniels  
Caribou 405-848-0100

	TW	LW
1 Bush The Chemicals Between Us	29	29
2 Creed What If I	27	24
3 Metallica No Life Driver	27	25
4 Godsmack Voodoo	27	29
5 Red Hot Chili Peppers Otherside	26	23
6 Kid Rock Only God Knows Why	24	20
7 Pearl Jam Nothing As It Seems	21	20
8 3 Doors Down Kryptonite	19	20
9 Matchbox Twenty Bent	18	16
10 U.P.O. Godless	18	18
11 Metallica I Disappear	18	18
12 Incubus Pardon Me	18	18
13 Ian Moore Marmalade	17	17
14 San Diego Blue Motel	17	17
15 Creed With Arms Wide Open	17	17
16 Let My Own Worst Enemy	15	8
17 Full Devil Jacket Now You Know	14	11
18 A Perfect Circle Judith	14	17
19 Stone Temple Pilots Sour Girl	14	18
20 Tonic You Wanted Here	13	11
21 Korn Make Me Bad	13	11
22 Oleaner Why I'm Here	13	12
23 Kid Rock American Bad Ass	12	9
24 Santana Feat. Everlast Put Your Lights	12	10
25 Live The Dolphin's Cry	12	12
26 Creed With Arms Wide Open	11	15
27 System Of A Down Spiders	11	12
28 Caroline's Spine Nothing To Prove	11	28
29 Jesse James Dupree Mainline	9	2
30 Nickelback Leader Of Men	8	12

FI Jesse James Dupree Mainline 9 2

**WNOR Norfolk**  
PD: Harvey Kojan  
APD/MD: Tim Parker  
Sage 757-366-9900

	TW	LW
1 3 Doors Down Kryptonite	30	28
2 Godsmack Voodoo	28	25
3 Sevendust Waffle	27	27
4 Creed What If I	26	29
5 Metallica I Disappear	25	29
6 Full Devil Jacket Now You Know	20	7
7 Papa Roach Last Resort	20	7
8 A Perfect Circle Judith	20	21
9 Bush Warm Machine	18	14
10 Monster Magnet Silver Future	16	15
11 Korn Make Me Bad	16	17
12 Incubus Pardon Me	16	18
13 Veruca Salt Born Entertainer	15	13
14 Filter The Best Things	15	14
15 Pearl Jam Nothing As It Seems	15	15
16 Kid Rock American Bad Ass	15	20
17 Staind Home	14	13
18 Rage Against The Machine Sleep Now In The	14	13
19 Disturbed Stuffy	14	13
20 Powerman 5000 Supernova Goes Pop	14	15
21 Creed With Arms Wide Open	14	17
22 Limp Bizkit Break Stuff	13	13
23 Pantera Revolution In My Name	13	13
24 Staind Mud In It	12	8
25 Pearl Jam Nothing As It Seems	12	10
26 Collective Soul Heavy	11	15
27 Creed Higher	11	10
28 Rob Zombie Living Dead Girl	11	10
29 Godsmack Voodoo	11	10
30 Let My Own Worst Enemy	11	0

FI Deftones Change 11 0  
FI The Deadlights Amulet 7 4  
FI The Offspring Totalimmortal 7 4

**WTUE Dayton**  
PD: Mike Thomas  
APD: Steve Kramer  
MD: John Beaulieu  
Clear Channel 937-224-1137

	TW	LW
1 3 Doors Down Kryptonite	27	29
2 Creed What If I	26	23
3 AC/DC Stiff Upper Lip	25	24
4 Creed Higher	23	20
5 Kid Rock Only God Knows Why	21	10
6 Metallica No Life Driver	20	23
7 Red Hot Chili Peppers Otherside	15	27
8 Caroline's Spine Nothing To Prove	12	10
9 Foo Fighters Breakout	12	10
10 Stix New Beginning	12	11
11 A Perfect Circle Judith	11	8
12 Creed With Arms Wide Open	10	9
13 The Nixons First Trip To The Moon	10	10
14 Nickelback Leader Of Men	10	11
15 Pearl Jam Nothing As It Seems	10	12
16 U.P.O. Godless	10	12
17 Jimmy Page & The Black Crowes What Is And	8	7
18 Stone Temple Pilots Sour Girl	8	10
19 Metallica I Disappear	8	12
20 Creed One	8	12
21 Soundgarden Black Hole Sun	6	2
22 Creed One	6	4
23 Kid Rock American Bad Ass	6	5
24 Staind Mud In It	6	8
25 Pink Floyd Mother	5	2
26 Limp Bizkit Take A Look Around	5	2
27 Disturbed Stuffy	5	2
28 The Offspring Keep Away	5	2
29 The Offspring The Kids Aren't Alright	5	3
30 Live Lightning Crashes	5	3
31 Creed My Own Worst Enemy	5	3

FI Kid Rock American Bad Ass 6 5  
FI Deftones Change 6 5  
FI The Step Kings Right Is Wrong 6 2

**KRXQ Sacramento**  
SM: Curtiss Johnson  
APD: Pat Martin  
MD: Kyle Brooks  
Entercom 916-334-7777

	TW	LW
1 Godsmack Bad Religion	27	25
2 A Perfect Circle Judith	27	26
3 Papa Roach Last Resort	26	23
4 3 Doors Down Kryptonite	26	28
5 U.P.O. Godless	26	28
6 Korn Make Me Bad	20	17
7 Stone Temple Pilots Sour Girl	19	16
8 Metallica No Life Driver	19	17
9 Sevendust Waffle	18	19
10 Godsmack Voodoo	17	15
11 Metallica I Disappear	17	17
12 Creed With Arms Wide Open	17	18
13 Incubus Open Your Eyes	16	12
14 Incubus Pardon Me	16	14
15 Rage Against The Machine Sleep Now In The	16	18
16 Nickelback Leader Of Men	16	19
17 Red Hot Chili Peppers California Cation	15	15
18 3 Doors Down Lullaby	15	16
19 Pearl Jam Nothing As It Seems	15	17
20 Monster Magnet Silver Future	14	17
21 Soundgarden Black Hole Sun	14	17
22 Full Devil Jacket Now You Know	13	12
23 Slipknot Wait And Bleed	13	11
24 Limp Bizkit Take A Look Around	10	9
25 P.O.D. Southtown	10	15
26 Limp Bizkit Break Stuff	9	11
27 Disturbed Stuffy	9	11
28 System Of A Down Spiders	9	12
29 Pantera Revolution In My Name	8	10
30 The Deadlights Amulet	7	6

FI Papa Roach Broken Home 6 2  
FI The Step Kings Right Is Wrong 6 2

**WQBK Albany**  
OM: PD: Susan Groves  
MD: Chris Osborn  
Clear Channel 518-462-5555

	TW	LW
1 3 Doors Down Kryptonite	32	30
2 Metallica I Disappear	30	26
3 Red Hot Chili Peppers Otherside	28	24
4 Staind Home	27	27
5 Korn Make Me Bad	27	29
6 Stone Temple Pilots Sour Girl	19	15
7 A Perfect Circle Judith	19	15
8 Sevendust Waffle	18	16
9 Limp Bizkit Break Stuff	18	12
10 Kenny Wayne Shepherd Band Blue On Black	16	16
11 Incubus Pardon Me	16	16
12 U.P.O. Godless	16	17
13 Rage Against The Machine Sleep Now In The	16	17
14 Kid Rock American Bad Ass	15	10
15 Stix New Beginning	15	15
16 Creed With Arms Wide Open	15	16
17 Pearl Jam Nothing As It Seems	15	18
18 The Smashing Pumpkins Stand Inside Your Love	14	11
19 Powerman 5000 Supernova Goes Pop	14	18
20 Lenny Kravitz Fly Away	12	13
21 Powerman 5000 Supernova Goes Pop	12	13
22 One Minute Silence Holy Man	11	9
23 Alice In Chains Man In The Box	11	10
24 Disturbed Stuffy	11	11
25 Filter The Best Things	11	11
26 Pearl Jam Nothing As It Seems	10	8
27 Dio Rainbow In The Dark	10	8
28 Rob Zombie Dragula	10	8
29 Buckcherry Lit Up	10	10
30 Monster Magnet Silver Future	10	10

FI No First Impressions This Week

**WTPT Greenville, SC**  
PD: Zak Tyler  
Clear Channel 864-242-4660

	TW	LW
1 3 Doors Down Kryptonite	36	38
2 Red Hot Chili Peppers Otherside	35	38
3 Kid Rock Only God Knows Why	29	29
4 Creed With Arms Wide Open	24	20
5 Staind Home	23	20
6 A Perfect Circle Judith	23	23
7 Pearl Jam Nothing As It Seems	21	18
8 Nickelback Leader Of Men	20	20
9 Monster Magnet Silver Future	20	21
10 Limp Bizkit Re-arranged	20	21
11 Creed Higher	20	23
12 The Offspring The Kids Aren't Alright	19	16
13 Santana Feat. Rob Thomas Smooth	19	18
14 Oleaner Why I'm Here	19	18
15 Metallica I Disappear	18	13
16 Godsmack Voodoo	18	21
17 U.P.O. Godless	17	15
18 Korn Make Me Bad	17	22
19 Red Hot Chili Peppers Scar Tissue	16	12
20 Kenny Wayne Shepherd Band Blue On Black	16	17
21 Powerman 5000 Supernova Goes Pop	15	16
22 Metallica No Life Driver	15	13
23 Godsmack Whatever	15	15
24 Jesse James Dupree Mainline	14	8
25 Collective Soul Heavy	14	14
26 Pearl Jam Nothing As It Seems	14	17
27 Dio Rainbow In The Dark	13	1
28 Stone Temple Pilots Sour Girl	13	1
29 Nine Inch Nails Starfuckers, Inc.	13	1
30 Kid Rock American Bad Ass	13	9
31 Kid Rock Badwater	13	14

FI Stone Temple Pilots Sour Girl 13 1  
FI Nine Inch Nails Starfuckers, Inc. 13 1  
FI One Minute Silence Holy Man 6 5

**WNVE Rochester**  
PD/MD: Erick Anderson  
Clear Channel 716-246-0440

	TW	LW
1 3 Doors Down Kryptonite	29	31
2 Godsmack Whatever	28	29
3 Red Hot Chili Peppers Otherside	28	30
4 Metallica I Disappear	28	29
5 Metallica I Disappear	24	25
6 Buckcherry Lit Up	22	23
7 Kid Rock American Bad Ass	21	19
8 Creed With Arms Wide Open	20	18
9 Godsmack Keep Away	20	18
10 Kid Rock Only God Knows Why	20	18
11 Godsmack Voodoo	20	18
12 Pearl Jam Nothing As It Seems	18	15
13 A Perfect Circle Judith	18	15
14 Rage Against The Machine Guerrilla Radio	15	17
15 Creed With Arms Wide Open	15	10
16 The Offspring The Kids Aren't Alright	13	15
17 Creed What If I	13	15
18 Alice In Chains Man In The Box	11	6
19 Nickelback Leader Of Men	11	7
20 Kid Rock American Bad Ass	11	9
21 Staind Home	11	9
22 Creed One	11	13
23 Rob Zombie Dragula	11	13
24 Korn Make Me Bad	10	8
25 Incubus Pardon Me	10	12
26 Ozzie Osbourne Mr. Tinkerbell	10	18
27 Back In Black My Darling	9	4
28 Ozzy Osbourne Over The Mountain	9	4
29 System Of A Down Spiders	9	6
30 AC/DC Hell Bells	9	7

FI No First Impressions This Week

**KBER Salt Lake City**  
OM: Bruce Jones  
MD: Helen Powers  
Citadel 801-485-6700

	TW	LW
1 Metallica I Disappear	28	22
2 3 Doors Down Kryptonite	26	25
3 Incubus Pardon Me	25	23
4 Kid Rock Only God Knows Why	24	19
5 Red Hot Chili Peppers Otherside	19	19
6 Buckcherry Lit Up	16	15
7 Kid Rock American Bad Ass	13	7
8 Godsmack Voodoo	13	8
9 Nickelback Leader Of Men	12	12
10 Kid Rock Only God Knows Why	12	10
11 U.P.O. Godless	11	9
12 Lenny Kravitz Fly Away	10	3
13 A Perfect Circle Judith	10	8
14 Let My Own Worst Enemy	10	9
15 Creed With Arms Wide Open	10	10
16 The Nixons First Trip To The Moon	10	13
17 Caroline's Spine Nothing To Prove	9	13
18 The Offspring Why Don't You Get A Job?	8	3
19 System Of A Down Spiders	8	4
20 Creed One	8	6
21 Powerman 5000 Supernova Goes Pop	8	6
22 Creed What If I	8	7
23 8Steps? Satisfied	8	8
24 Guns N' Roses Sweet Child O' Mine	8	10
25 Buckcherry Lit Up	7	3
26 Candice Aylee Behind	7	4
27 Back In Black My Darling	7	4
28 Kenny Wayne Shepherd Band Blue On Black	7	7
29 Creed One	7	8
30 Pink Floyd Young Lust (Live)	7	10

FI System Of A Down Spiders 8 4

**WXRC Charlotte**  
PD: Ron Bowen  
Pacific 828-322-9472

	TW	LW
1 Staind Home	27	26
2 Caroline's Spine Nothing To Prove	25	23
3 Filter The Best Things	24	20
4 8Steps? Satisfied	24	20
5 3 Doors Down Kryptonite	24	24
6 Matchbox Twenty Bent	24	27
7 Creed With Arms Wide Open	23	24
8 Monster Magnet Silver Future	22	24
9 Korn Make Me Bad	21	16
10 Red Hot Chili Peppers Otherside	21	19
11 The Smashing Pumpkins Stand Inside Your Love	20	20
12 Kid Rock American Bad Ass	17	7
13 The Nixons First Trip To The Moon	17	21
14 Pearl Jam Nothing As It Seems	16	12
15 Nickelback Leader Of Men	16	17
16 Red Hot Chili Peppers Under The Bridge	16	19
17 Live Through This	15	15
18 Let My Own Worst Enemy	15	10
19 Poison Shut Up In The Box	15	10
20 Veruca Salt Born Entertainer	11	6
21 Metallica I Disappear	11	7
22 Limp Bizkit Take A Look Around	11	7
23 Papa Roach Last Resort	11	13
24 Full Devil Jacket Now You Know	11	14
25 Blink-182 Adam's Song	11	15
26 Apartment 26 Basic Breakdown	10	1
27 Stix New Beginning	10	12
28 Foo Fighters Learn To Fly	10	12
29 Pearl Jam Nothing As It Seems	9	9
30 Pantera Revolution In My Name	9	9
31 Stone Temple Pilots Sour Girl	9	10
32 A Perfect Circle Judith	9	12

FI Foo Fighters Breakout 13 3  
FI Apartment 26 Basic Breakdown 10 1  
FI The Step Kings Right Is Wrong 6 1

**WIOT Toledo**  
OM: Cary Pal  
PD: Don Davis  
Clear Channel 419-244-8321

	TW	LW
1 3 Doors Down Kryptonite	27	26
2 Kid Rock Only God Knows Why	26	29
3 Metallica No Life Driver	27	27
4 Creed Higher	18	18
5 Nickelback Leader Of Men	20	16
6 Pearl Jam Nothing As It Seems	19	18
7 Stone Temple Pilots Sour Girl	19	19
8 Stix New Beginning	17	19
9 AC/DC Stiff Upper Lip	15	14
10 Metallica I Disappear	14	14
11 Godsmack Voodoo	14	15
12 Collective Soul Heavy	12	9
13 Creed What If I	12	13
14 Creed With Arms Wide Open	12	17
15 Caroline's Spine Nothing To Prove	11	7
16 Red Hot Chili Peppers Under The Bridge	11	9
17 Kenny Wayne Shepherd Band Blue On Black	11	10
18 Alice In Chains Man In The Box	10	9
19 Sammy Hagar Both Sides Now	9	10
20 Godsmack Keep Away	9	10
21 AC/DC Satellite Blues	9	10
22 Foo Fighters Learn To Fly	8	10
23 Live Through This	8	11
24 Bush Communion	8	11
25 Stone Temple Pilots Vasoline	7	3
26 Everlast What Is Like	7	9
27 Foo Fighters Learn To Fly	7	15
28 Pearl Jam Nothing As It Seems	7	15
29 Creed What Is This Life For	6	3
30 Bad Company Feel Like Makin' Love	6	3
31 Pearl Jam Alive	6	3

FI A Perfect Circle Judith 6 0

**WKLG Grand Rapids**  
OM: Tony Gates  
APD: Mark Feurie  
Bloomington 616-774-8461

	TW	LW
1 3 Doors Down Kryptonite	39	39
2 Rage Against The Machine Sleep Now In The	37	33
3 Staind Home	37	38
4 Metallica I Disappear	36	33
5 A Perfect Circle Judith	33	34
6 Korn Make Me Bad	33	35
7 Kid Rock American Bad Ass	25	19
8 Papa Roach Last Resort	25	19
9 Disturbed Stuffy	24	23
10 Monster Magnet Silver Future	22	22
11 Limp Bizkit Break Stuff	21	17
12 One Minute Silence Holy Man	21	20
13 Nickelback Leader Of Men	21	21
14 Dope Everything Sucks	21	21
15 Limp Bizkit Take A Look Around	21	21
16 Deftones Change	21	0
17 Creed With Arms Wide Open	20	14
18 Pearl Jam Nothing As It Seems	19	21
19 Apartment 26 Basic Breakdown	18	9
20 Incubus Pardon Me	18	22
21 U.P.O. Godless	18	18
22 Foo Fighters Stacked Actors	15	15
23 P.O.D. Southtown	16	19
24 Red Hot Chili Peppers Otherside	16	17
25 Days Of The New Weapon And The Wound	15	14
26 Stone Temple Pilots Down	15	15
27 Pantera Revolution In My Name	15	17
28 Creed What Is This Life For	14	8
29 Megadeth Bleedline	14	13
30 Pearl Jam Alive	14	17

FI Deftones Change 20 0  
FI Bush Warm Machine 7 0  
FI Godsmack Going Down 7 1

**WXRA Greensboro**  
PD: Tim Satterfield  
APD: Marcia Gan  
Clear Channel 336-727-8826

	TW	LW
1 Creed What If I	27	27
2 Godsmack Keep Away	27	27
3 3 Doors Down Kryptonite	26	23
4 Godsmack Whatever	26	23
5 Metallica No Life Driver	25	23
6 Metallica I Disappear	24	23
7 Creed With Arms Wide Open	22	9
8 AC/DC Stiff Upper Lip	22	18
9 Megadeth Bleedline	20	21
10 Live The Dolphin's Cry	20	13
11 Limp Bizkit Break Stuff	17	20
12 Red Hot Chili Peppers Otherside	17	20
13 Collective Soul Precious Declaration		

Songs ranked by number of detections. Playlists are listed in order of TSA weekly cume, beginning with the highest-cuming station. Cumes are updated twice yearly following the release of the spring and fall Arbitron surveys. The number of stations shown each week varies depending upon space.  
First Impressions (FI) denotes songs with 6 or more detections at station for first time this week.

**KLOS Los Angeles**  
PD: Rita Wilde  
MD: Jim Villanueva  
ABC/Disney 310-840-4800

TW	LW		
1	Don Henley Workin' It	13	14
2	Pearl Jam Nothing As It Seems	12	11
3	Metallica I Disappear	11	9
4	Phish Heavy Things	10	4
5	Bon Jovi It's My Life	7	0
6	Stone Temple Pilots Sour Girl	6	5
7	The Who Baba O'Riley	5	3
8	Santana Back Magic Woman	5	3
9	Ten Years After I'd Love To Change The	5	3
10	Jimmi Hendrix All Along The Watchtower	5	3
11	Alice Cooper Eighteen	5	3
12	3 Doors Down Kryptonite	5	3
13	Metallica No Leaf Clover	5	3
14	ZZ Top Cheap Sunglasses	5	3
15	Rush Freewill	5	3
16	Def Leppard Rock Of Ages	5	3
17	Lynyrd Skynrd What's Your Name	5	3
18	Def Leppard Fools	5	3
19	Pearl Jam Insinuation	5	3
20	Matchbox Twenty Bent	5	3
FI	Phish Heavy Things	10	4
FI	Bon Jovi It's My Life	7	0

**WMMR Philadelphia**  
PD: Sam Milkman  
APD/MD: Ken Zipeto  
Greater Media 610-771-9933

TW	LW		
1	Creed With Arms Wide Open	30	24
2	Metallica No Leaf Clover	30	26
3	Pearl Jam Nothing As It Seems	29	22
4	Creed Higher	25	24
5	3 Doors Down Kryptonite	23	18
6	Bush Warm Machine	19	18
7	Collective Soul Heavy	15	10
8	Stone Temple Pilots Sour Girl	15	18
9	Metallica I Disappear	14	4
10	Foo Fighters Learn To Fly	13	13
11	Nirvana The Man Who Sold The World	11	9
12	Nirvana All Apologies	11	13
13	8 Steps Satisfied	10	5
14	Santana Feat. Everlast Put Your Lights	10	6
15	Tawie You Wanted More	10	6
16	Stone Temple Pilots Plush	10	6
17	Guns N' Roses Sweet Child O' Mine	10	8
18	Nirvana Smells Like Teen Spirit	10	8
19	Foo Fighters Everlong	10	11
20	Jimmy Page & The Black Crowes What Is And	10	12
FI	Metallica I Disappear	14	4
FI	The Who You Better You Bet (Live)	7	0

**WDVE Pittsburgh**  
PD: Garrett Hart  
MD: Val Porter  
Greater Media 412-937-1441

TW	LW		
1	The Clarks Better Off Without You	23	6
2	3 Doors Down Kryptonite	22	19
3	Indigenous Little Time	19	19
4	Red Hot Chili Peppers Otherside	19	20
5	Str New Beginning	18	22
6	Go Go Dolls Breadway	17	18
7	Caroline's Spine Nothing To Prove	17	17
8	Metallica I Disappear	17	17
9	Matchbox Twenty Bent	16	19
10	Foo Fighters Learn To Fly	13	12
11	Stone Temple Pilots Sour Girl	13	18
12	Counting Crows Mrs. Potter's Lullaby	12	12
13	Eric Clapton & B.B. King Riding With The	11	0
14	Hair Of The Dog Rise	11	9
15	A Perfect Circle Judith	11	9
16	Nickelback Leader Of Men	11	10
17	Don Henley Workin' It	10	11
18	U.P.D. Goddess	9	11
19	Creed With Arms Wide Open	9	8
20	Steve Earle Transcendental Blues	9	10
FI	Eric Clapton & B.B. King Riding With The	11	0

**WFBO Indianapolis**  
OM: Marty Bender  
MD: Ace Cosby  
AMFM 317-257-7565

TW	LW		
1	Don Henley Workin' It	11	4
2	Eric Clapton & B.B. King Riding With The	7	0
3	Stevie Ray Vaughan & Double Look At	7	5
4	Kenny Wayne Shepherd Band Was	7	7
5	Van Halen You Really Got Me	6	1
6	John Cougar Mellencamp Play Gurtar	6	3
7	Bad Company Ready For Love	6	3
8	Jimmy Page & The Black Crowes Oh Well	6	3
9	Lynyrd Skynrd Sweet Home Alabama	6	4
10	U.P.D. Goddess	6	4
11	Led Zepplin Hey Hey What Can I Do	6	4
12	John Cougar Mellencamp Small Town	6	4
13	Str New Beginning	6	5
14	Van Halen Ice Cream Man	6	5
15	Rush Tom Sawyer	6	5
16	The Doors Love Her Madly	6	5
17	Eagles Those Shoes	6	5
18	Matchbox Twenty Bent	6	6
19	Rolling Stones You Can't Always Get What	6	7
20	REO Speedwagon Turn Me To You	5	2
FI	Eric Clapton & B.B. King Riding With The	7	0
FI	Jimmy Page & The Black Crowes Oh Well	6	3

**WKLS Atlanta**  
PD: Tim Dukes  
APD: John Allers  
MD: Laura Lee Lunt  
Clear Channel 404-325-0960

TW	LW		
1	Santana Feat. Everlast Put Your Lights	26	25
2	Metallica No Leaf Clover	25	23
3	Red Hot Chili Peppers Otherside	25	25
4	Creed With Arms Wide Open	25	25
5	Kid Rock Only God Knows Why	25	28
6	Metallica I Disappear	16	16
7	Oleander Why I'm Here	12	11
8	3 Doors Down Kryptonite	14	12
9	Collective Soul Heavy	14	13
10	AC/DC Stiff Upper Lip	14	14
11	Foo Fighters Everlong	13	15
12	Creed What If	12	9
13	Tonic Open Up Your Eyes	12	11
14	Stone Temple Pilots Sour Girl	12	11
15	Soundgarden Pretty Noize	12	12
16	The Offspring The Kids Aren't Alright	12	17
17	Kenny Wayne Shepherd Band Blue On Black	11	10
18	Stone Temple Pilots Triffin On A Mole	11	10
19	Bush The Chemicals Between Us	11	10
20	Bush Little Things	10	7
FI	No First Impressions This Week		

**KLOL Houston**  
PD: Max Dugan  
AMFM 713-526-6855

TW	LW		
1	Creed What If	30	20
2	Red Hot Chili Peppers Otherside	28	31
3	Metallica No Leaf Clover	24	29
4	3 Doors Down Kryptonite	20	25
5	Creed Higher	18	13
6	Kid Rock Only God Knows Why	16	15
7	Jimmy Page & The Black Crowes What Is And	15	12
8	Godsmack Keep Away	14	14
9	Pearl Jam Nothing As It Seems	14	18
10	U.P.D. Goddess	12	4
11	Kenny Wayne Shepherd Band Was	12	12
12	AC/DC Stiff Upper Lip	12	12
13	Rage Against The Machine Sleep Now In The	12	17
14	Metallica I Disappear	11	12
15	Santana Feat. Rob Thomas Smooth	10	5
16	Lit My Own Worst Enemy	10	10
17	Filter The Best Things	10	12
18	Ozzy Osbourne Bark At The Moon	9	6
19	Sammy Hagar Heavy Metal	9	6
20	Nirvana Come As You Are	9	7
FI	U.P.D. Goddess	12	4
FI	A Perfect Circle Judith	7	5

**WNCX Cleveland**  
PD: Bill Louis  
APD/MD: David Jockers  
Infinity 216-861-0100

TW	LW		
1	Pink Floyd In The Flesh (Live)	18	9
2	Don Henley Workin' It	17	17
3	Trans-Siberian Orchestra Requiem (Fifth)	15	20
4	Steeley Dan Jack Of Speed	14	15
5	AC/DC Stiff Upper Lip	13	14
6	Joe Satriani Until We Say Goodbye	11	13
7	Little Steven Bon Ajan Savage	10	11
8	Ian Anderson Postcard Dan	10	12
9	Kenny Wayne Shepherd Band Was	8	11
10	Artful Dodger Gypsy	5	3
11	Queen Fat Bottomed Girls	5	1
12	Foreigner Gold As Ice	5	1
13	Don Henley The Boys Of Summer	4	1
14	Jay Ferguson Thunder Island	4	1
15	Deep Purple Hush	4	1
16	Jethro Tull Aqualing	4	1
17	Blue Oyster Cult Godzilla	4	1
18	Bad Company Moon On	4	1
19	Eric Clapton After Midnight	4	2
20	Foreigner Long Long Way From Home	4	2
FI	No First Impressions This Week		

**WEBN Cincinnati**  
OM: Scott Reinhardt  
PD: Michael Walter  
MD: Bob Garrett  
Clear Channel 513-621-9326

TW	LW		
1	3 Doors Down Kryptonite	31	30
2	Godsmack Keep Away	27	29
3	Lit Miserable	20	17
4	Red Hot Chili Peppers Otherside	19	15
5	Bush Warm Machine	18	15
6	Str New Beginning	18	18
7	Incubus Pardon Me	17	17
8	Metallica I Disappear	17	18
9	Stained Home	17	18
10	Creed Higher	17	22
11	Nickelback Leader Of Men	16	18
12	Rob Zombie Dracula	15	16
13	Foo Fighters Stacked Actors	14	14
14	Godsmack Voodoo	14	18
15	Godsmack Whatever	13	6
16	Creed One	13	9
17	Creed What If	13	12
18	Metallica No Leaf Clover	13	14
19	Creed With Arms Wide Open	13	16
20	Limp Bizkit Re-arranged	12	13
FI	Disturbed Stupify	6	5

**WBAB Long Island**  
PD: Ted Edwards  
APD: Ralph Tortora  
MD: John Panse  
Cox 631-587-1023

TW	LW		
1	3 Doors Down Kryptonite	33	30
2	Godsmack No Leaf Clover	33	31
3	Red Hot Chili Peppers Otherside	31	29
4	Creed Higher	31	31
5	Jimmy Page & The Black Crowes What Is And	28	0
6	Phish Heavy Things	16	12
7	Foo Fighters Learn To Fly	15	12
8	Matchbox Twenty Bent	15	24
9	Creed With Arms Wide Open	13	10
10	Counting Crows Mrs. Potter's Lullaby	13	13
11	Pearl Jam Nothing As It Seems	12	16
12	Stone Temple Pilots Sour Girl	11	0
13	Collective Soul Heavy	11	9
14	Eric Clapton & B.B. King Riding With The	9	0
15	Lenny Kravitz Fly Away	9	7
16	Pink Floyd Young Lust (Live)	9	11
17	AC/DC Stiff Upper Lip	9	11
18	Nickelback Leader Of Men	9	12
19	Pearl Jam Wishin' It	8	7
20	Santana Feat. Everlast Put Your Lights	8	9
FI	Stone Temple Pilots Sour Girl	11	0
FI	Eric Clapton & B.B. King Riding With The	9	0

**KSHE St. Louis**  
PD: Rick Balis  
MD: Al Hofer  
Emmis 314-621-0095

TW	LW		
1	Bon Jovi It's My Life	20	17
2	Don Henley Workin' It	18	16
3	Metallica I Disappear	17	17
4	AC/DC Satellite Blues	15	15
5	Kenny Wayne Shepherd Band Blue On Black	15	14
6	Corey Stevens The Price Is Right	15	16
7	Go Go Dolls Broadway	6	0
8	Blackfoot Train Train	6	3
9	Creed With Arms Wide Open	6	4
10	Montrose Rock Candy	6	4
11	Poison Cowie Of The Rolling Stone	6	5
12	Jim Hendrix All Along The Watchtower	6	5
13	Billy Thorpe Children Of The Sun	6	5
14	Dio Fever Dreams	6	5
15	Bad Company Hilly Water	5	1
16	Missouri Myn	5	1
17	Whitesnake Slow An Easy	5	1
18	George Thorogood & The Destroyers Bad To The	5	1
19	Van Halen Dance The Night Away	5	2
20	Aerosmith Dude (Looks Like A Lady)	5	2
FI	Go Go Dolls Broadway	6	0
FI	Paul Rodgers Drifters	6	4

**WHYJ Providence**  
PD: Joe Bevilacqua  
MD: Sharon Schifino  
AMFM 401-438-6110

TW	LW		
1	Red Hot Chili Peppers Otherside	25	24
2	Creed Higher	24	23
3	Foo Fighters Learn To Fly	24	25
4	3 Doors Down Kryptonite	23	20
5	Kenny Wayne Shepherd Band Blue On Black	18	24
6	Metallica I Disappear	17	16
7	Matchbox Twenty Bent	16	9
8	The Mighty Mighty Bosstones So Sad To Say	16	13
9	Collective Soul Heavy	15	9
10	Stone Temple Pilots Sour Girl	16	17
11	Barenaked Ladies The Old Apartment	15	11
12	Stained Home	15	15
13	Santana Feat. Everlast Put Your Lights	15	16
14	Red Hot Chili Peppers Scar Tissue	14	11
15	The Doors Roadhouse Blues	14	11
16	Kenny Wayne Shepherd Band Last Goodbye	14	11
17	Godsmack Voodoo	13	11
18	Don Henley Workin' It	13	12
19	Santana Feat. Rob Thomas Smooth	13	14
20	Buckcherry Lit Up	13	17
FI	Full Devil Jacket Now You Know	6	0
FI	Foo Fighters Breakout	6	4

**WLQV Columbus**  
OM/MD: Charley Lake  
APD/MD: Joe Show  
Infinity 614-227-9696

TW	LW		
1	3 Doors Down Kryptonite	25	20
2	Jimmy Page & The Black Crowes What Is And	25	21
3	Santana Feat. Rob Thomas Smooth	23	23
4	Foo Fighters Learn To Fly	22	24
5	Creed Higher	19	23
6	Marcy Playground Sex And Candy	10	8
7	Rush Freewill	9	5
8	Collective Soul Where The River Flows	9	5
9	Boston Peace Of Mind	9	5
10	Boston Rock & Roll Band	9	6
11	Red Hot Chili Peppers Scar Tissue	9	7
12	Jimmi Hendrix Purple Haze	9	7
13	Joe Walsh Rocky Mountain Way	8	6
14	J. Geils Band Love Shmiks	8	6
15	The Doors Roadhouse Blues	8	7
16	Tom Petty And The Heartbreakers You Got	8	7
17	Rush Fly By Night	8	7
18	Don Henley Workin' It	7	4
19	Pink Floyd Hey You	7	4
20	Collective Soul The World I Know	7	5
FI	Pearl Jam Nothing As It Seems	6	4

**WPYX Albany**  
PD/MD: John Cooper  
AMFM 518-785-9800

TW	LW		
1	3 Doors Down Kryptonite	21	20
2	Red Hot Chili Peppers Otherside	21	20
3	Creed Higher	21	22
4	Kid Rock Only God Knows Why	20	20
5	Go Go Dolls Broadway	21	19
6	Phish Heavy Things	11	3
7	Jimmy Page & The Black Crowes Heartbreaker	10	0
8	Jimmy Page & The Black Crowes What Is And	10	13
9	Tonic You Wanted More	9	9
10	Kenny Wayne Shepherd Band Was	9	10
11	Third Eye Blind Never Let You Go	9	10
12	Def Leppard Promises	8	8
13	Collective Soul Heavy	8	5
14	Green Day When I Come Around	7	6
15	Foo Fighters Learn To Fly	7	8
16	Matchbox Twenty Bent	7	11
17	Pearl Jam Daughter	6	4
18	Steeley Dan Jack Of Speed	6	4
19	Steppenwolf Magic Carpet Ride	6	4
20	The Doors Touch Me	6	5
FI	Jimmy Page & The Black Crowes Heartbreaker	10	0
FI	Steeley Dan Jack Of Speed	6	4

**KDKB Phoenix**  
PD: Joe Bonadonna  
Sandusky 480-897-9300

TW	LW		
1	Creed Higher	22	21
2	Matchbox Twenty Bent	22	18
3	3 Doors Down Kryptonite	22	22
4	Stone Temple Pilots Sour Girl	21	27
5	Go Go Dolls Broadway	21	19
6	AC/DC Stiff Upper Lip	21	21
7	Tonic You Wanted More	21	23
8	Don Henley Workin' It	20	23
9	Santana Feat. Everlast Put Your Lights	17	23
10	Counting Crows Hangararound	15	11
11	Filter Take A Picture	15	11
12	Jimmy Page & The Black Crowes What Is And	14	11
13	Kid Rock Only God Knows Why	14	18
14	Def Leppard Promises	13	12
15	Pink Floyd Young Lust (Live)	13	12
16	Foo Fighters Learn To Fly	13	15
17	Red Hot Chili Peppers Otherside	13	17
18	Bon Jovi It's My Life	10	0
19	Guns N' Roses Welcome To The Jungle	7	4
20	The Doors Roadhouse Blues	7	7

Upward-moving songs ranked in order of detections. Songs are removed if they lose more than 5% of their detections from previous week or if their detections decline for two consecutive weeks.

## MOST NEW STATIONS

Songs with 6 or more detections at new stations this week

### NEW STATIONS

<b>PAUL RODGERS</b> <i>Drifters (CMC International)</i>	<b>13</b>
<b>THE OFFSPRING</b> <i>Totalimmortal (Elektra/EEG)</i>	<b>12</b>
<b>DEFTONES</b> <i>Change (In The House Of Flies) (Maverick)</i>	<b>11</b>
<b>FOO FIGHTERS</b> <i>Breakout (Roswell/RCA)</i>	<b>10</b>
<b>JESSE JAMES DUPREE</b> <i>Mainline (V2)</i>	<b>10</b>



Total Detections/Gain

**LIMP BIZKIT** 661/21  
*Break Stuff (Flip/Interscope)*  
Total Stations: 50/Chart Move: 23-20  
Heavy (21+ detections): 13 KBPI, KBSO, KIOZ, KRAB, KRQC, KUFO, KXXR, WAAF, WBZX, WCCC, WKLO, WXTM, WZTA  
Medium (14-20): 3 KICT, WQBK, WQXA  
Light (Under 14): 34  
First Impressions: 2 KBSO, WRXL

### AIRPLAY LEADER

(FIRST STATION TO 100 PLAYS)  
**KUPD • Phoenix, AZ**  
PD: J. J. Jeffries  
MD: Bridget Ventura  
Date: 10/31/99



### AIRPOWER BOUND

Total Detections/Gain

**MONSTER MAGNET** 807/-3  
*Silver Future (Restless)*  
Total Stations: 63/Chart Move: 17-18  
Heavy (21+): 9 KAZR, KBSO, KICT, KRQC, KRZR, KZRQ, WKLO, WXBE, WXRC  
Medium (14-20): 12 KCAL, KISW, KOMP, KRXQ, KUPD, KZRR, WCCC, WJRR, WKSX, WNOR, WTPPT, WZTA  
Light (Under 14): 42  
First Impressions: 1 WVRK

**FOO FIGHTERS** 665/99  
*Breakout (Roswell/RCA)*  
Total Stations: 53/Chart Move: 28-19  
Heavy (21+): 5 KBSO, KRQC, WMFS, WRZK, WTKX  
Medium (14-20): 13 KFRQ, KICT, KIOZ, KISW, KLAQ, KLBK, KUPD, WOTT, WRXL, WTPPT, WXBE, WXTM, WZTA  
Light (Under 14): 35  
First Impressions: 10 KEZO, KICT, KZRQ, WBUZ, WHJY, WKLO, WKSX, WNCD, WXRC, WYSP

**KID ROCK** 586/83  
*American Bad Ass (Top Dog/Lava/Atlantic)*  
Total Stations: 50/Chart Move: 29-24  
Heavy (21+): 7 KAZR, KICT, KRAB, WBZX, WCCC, WKLO, WXTM  
Medium (14-20): 9 KILQ, KUFO, KXXR, WMFS, WNOR, WQBK, WQXA, WTKX, WXRC  
Light (Under 14): 34  
First Impressions: 8 KHTQ, KRQC, KSJO, KZRQ, WIYY, WROV, WTUE, WVRK

**FULL DEVIL JACKET** 577/81  
*Now You Know (Island/IDJMG)*  
Total Stations: 48/Chart Move: 30-25  
Heavy (21+): 5 KBSO, KZRQ, WMFS, WXTM, WZTA  
Medium (14-20): 8 KATT, KILO, KRQC, KRQC, KUPD, WNOR, WQXA, WXBE  
Light (Under 14): 35  
First Impressions: 2 WHJY, WVRK

**BUSH** 563/118  
*Warm Machine (Trauma)*  
Total Stations: 43/Chart Move: 34-28  
Heavy (21+): 6 KHTQ, KICT, KRQC, WBUZ, WMFS, WVRK  
Medium (14-20): 16 KBPI, KILO, KISW, KLAQ, KRQC, WEBN, WMMR, WNOR, WOTT, WRZK, WTKX, WXBE, WXTM, WYSP, WZTA, WZZO  
Light (Under 14): 21  
First Impressions: 7 KAZR, KISW, KNKN, KTUX, WKLO, WQXA, WXTB

**MATCHBOX TWENTY** 555/-22  
*Bent (Lava/Atlantic)*  
Total Stations: 42/Chart Move: 26-30  
Heavy (21+): 6 KDKB, KRAB, KTAL, WMFS, WOTT, WXRC  
Medium (14-20): 12 KATT, KLAQ, WBAB, WDVE, WEGR, WHJY, WKLC, WROV, WRZK, WSTZ, WVRK, WZTA  
Light (Under 14): 24  
First Impressions: 2 WAQX, WIZN

**PAPA ROACH** 482/72  
*Last Resort (DreamWorks)*  
Total Stations: 41/Chart Move: 37-31  
Heavy (21+): 7 KBSO, KILO, KRXQ, KZRQ, WAAF, WCCC, WKLO  
Medium (14-20): 4 KXXR, WMFS, WNOR, WXTM  
Light (Under 14): 30  
First Impressions: 4 KUFO, WKLC, WRAT, WROV

**DISTURBED** 393/9  
*Stupify (Giant/Reprise)*  
Total Stations: 45/Chart Move: 38-35  
Heavy (21+): 4 KBSO, WKLO, WXBE, WXTM  
Medium (14-20): 5 KAZR, KUPD, WAAF, WBUZ, WNOR  
Light (Under 14): 36  
First Impressions: 4 KTUX, WEBN, WMFS, WTPPT

**LIMP BIZKIT** 365/33  
*Take A Look Around (Hollywood)*  
Total Stations: 38/Chart Move: Debut 38  
Heavy (21+): 4 KBSO, KRAB, WBZX, WKLO

Medium (14-20): 10 KBPI, KRQC, KRZR, KXXR, KZRQ, WAAF, WCCC, WTKX, WXTM, WZTA  
Light (Under 14): 24  
First Impressions: 3 KAZR, KICT, KZRQ

**ONE MINUTE SILENCE** 349/7  
*Holy Man (V2)*  
Total Stations: 31/Chart Move: Debut 39  
Heavy (21+): 2 KBSO, WKLO  
Medium (14-20): 5 KZRQ, WCCC, WJRR, WXBE, WXTM  
Light (Under 14): 24  
First Impressions: 1 WTPPT

**THE NIXONS** 343/33  
*First Trip To The Moon (Koch)*  
Total Stations: 30/Chart Move: Debut 40  
Heavy (21+): 2 KBSO, WMFS  
Medium (14-20): 6 KBPI, KLBK, WCCC, WKSX, WOTT, WXRC  
Light (Under 14): 22

### CHART BOUND

Total Detections/Gain

**APARTMENT 26** 329/91  
*Basic Breakdown (Hollywood)*  
Total Stations: 36  
Heavy (21+): 1 KBSO  
Medium (14-20): 3 KUPD, WKLO, WXTM  
Light (Under 14): 32  
First Impressions: 4 KICT, KRQC, KZRQ, WXRC

**THE CATHERINE WHEEL** 302/30  
*Sparks Are Gonna Fly (Columbia)*  
Total Stations: 34  
Heavy (21+): 2 KBSO, WMFS  
Medium (14-20): 3 WKSX, WRAT, WXTM  
Light (Under 14): 29  
First Impressions: 4 KTUX, KZRQ, WLUM, WSTZ

**GOO GOO DOLLS** 278/18  
*Broadway (Warner Bros.)*  
Total Stations: 26  
Heavy (21+): 2 KDKB, WZZO  
Medium (14-20): 7 WDVE, WIZN, WKLC, WMFS, WOTT, WPYX, WQXA  
Light (Under 14): 17  
First Impressions: 2 KOMP, KSHE

**DEFTONES** 272/189  
*Change (In The House Of Flies) (Maverick)*  
Total Stations: 40  
Heavy (21+): 3 KAZR, WAAF, WXTM  
Medium (14-20): 2 WCCC, WKLO  
Light (Under 14): 35  
First Impressions: 11 KAZR, KILO, KLBK, KRQC, KUFO, WKLO, WLZR, WNOR, WQXA, WRIF, WZTA

**BLINK-182** 268/19  
*Adam's Song (MCA)*  
Total Stations: 23  
Heavy (21+): 4 KRAB, KZRQ, WMFS, WTKX  
Medium (14-20): 0  
Light (Under 14): 19

**THE OFFSPRING** 234/84  
*Totalimmortal (Elektra/EEG)*  
Total Stations: 37  
Heavy (21+): 0  
Medium (14-20): 2 KFRQ, WZTA  
Light (Under 14): 35  
First Impressions: 12 KAZR, KBSO, KILO, KRAB, KSJO, KXXR, WLZR, WNCD, WNOR, WOTT, WXBE, WXTB

**INDIGENOUS** 190/3  
*Little Time (Pachyderm)*  
Total Stations: 22  
Heavy (21+): 1 KLBK

Medium (14-20): 3 KBSO, WDVE, WOTT  
Light (Under 14): 18  
First Impressions: 3 KEZO, KFRQ, KYYS

**WONDERLAND** 185/-1  
*Wonderland (Jericho/Sire)*  
Total Stations: 23  
Heavy (21+): 2 KBSO, WCMF  
Medium (14-20): 2 KLBK, WKSX  
Light (Under 14): 19  
First Impressions: 2 KLAQ, WRIF

**JESSE JAMES DUPREE** 171/133  
*Mainline (V2)*  
Total Stations: 28  
Heavy (21+): 0  
Medium (14-20): 2 KRQC, WTPPT  
Light (Under 14): 26  
First Impressions: 10 KATT, KICT, KLBK, KOMP, KRQC, KZRQ, WKSX, WLUM, WRIF, WXBE

**COUNTING CROWS** 162/28  
*Mrs. Potter's Lullaby (DGC/Interscope)*  
Total Stations: 20  
Heavy (21+): 0  
Medium (14-20): 1 WZZO  
Light (Under 14): 19  
First Impressions: 1 WNCD

**PHISH** 162/43  
*Heavy Things (Elektra/EEG)*  
Total Stations: 17  
Heavy (21+): 0  
Medium (14-20): 4 WBAB, WDHA, WIZN, WPLR  
Light (Under 14): 13  
First Impressions: 2 KLOS, WAPL

**FOO FIGHTERS** 157/22  
*Have A Cigar (Hollywood)*  
Total Stations: 33  
Heavy (21+): 0  
Medium (14-20): 4 KAZR, WLZR, WVRK, WYSP  
Light (Under 14): 29  
First Impressions: 1 WVRK

**GODSMACK** 156/48  
*Bad Religion (Republic/Universal)*  
Total Stations: 18  
Heavy (21+): 1 KRXQ  
Medium (14-20): 4 KBPI, KXXR, WCCC, WXTB  
Light (Under 14): 13  
First Impressions: 6 KHTQ, KILO, KIOZ, KXXR, WIYY, WZTA

**BROUGHAM** 155/32  
*Murked Out (Warner Bros.)*  
Total Stations: 22  
Heavy (21+): 1 KBSO  
Medium (14-20): 1 WRZK  
Light (Under 14): 20  
First Impressions: 5 KFRQ, KSJO, KZRQ, WOTT, WXTM

**BENDER** 141/8  
*Superfly (TVT)*  
Total Stations: 22  
Heavy (21+): 1 KBSO  
Medium (14-20): 0  
Light (Under 14): 21  
First Impressions: 5 KAZR, KRQC, KRZR, KZRQ, WXBE

**VERUCA SALT** 134/1  
*Born Entertainer (Velveteen/Beyond)*  
Total Stations: 14  
Heavy (21+): 1 KBSO  
Medium (14-20): 2 WNOR, WZTA  
Light (Under 14): 11

**3 DOORS DOWN** 133/29  
*Loser (Republic/Universal)*  
Total Stations: 16  
Heavy (21+): 1 WMFS  
Medium (14-20): 4 KRXQ, WIYY, WXBE, WXTB  
Light (Under 14): 11  
First Impressions: 3 KHTQ, KILO, WIYY

**AC/DC** 132/60  
*Satellite Blues (EastWest/EEG)*  
Total Stations: 26  
Heavy (21+): 0  
Medium (14-20): 4 KSHE, WBUZ, WKLC, WLZR  
Light (Under 14): 22  
First Impressions: 4 KEZO, KISW, KOMP, WBUZ

**IRON MAIDEN** 128/50  
*The Wicker Man (Portrait/Columbia)*  
Total Stations: 33  
Heavy (21+): 0  
Medium (14-20): 3 KCAL, KILO, KNKN  
Light (Under 14): 30  
First Impressions: 3 KILO, KNKN, WLUM

**PAUL RODGERS** 127/122  
*Drifters (CMC International)*  
Total Stations: 19  
Heavy (21+): 0  
Medium (14-20): 0  
Light (Under 14): 19  
First Impressions: 13 KGGO, KLPX, KMOD, KRZZ, KSHE, KTYD, WEGR, WKLC, WKSX, WOTT, WROQ, WAFX, WZZO

**PINK FLOYD** 127/8  
*In The Flesh (Live) (Columbia)*  
Total Stations: 18  
Heavy (21+): 0  
Medium (14-20): 2 WAQX, WNCX  
Light (Under 14): 16

**BON JOVI** 119/81  
*It's My Life (Island/IDJMG)*  
Total Stations: 21  
Heavy (21+): 0  
Medium (14-20): 2 KSHE, WOTT  
Light (Under 14): 19  
First Impressions: 7 KBSO, KDKB, KLOS, KXUS, WOTT, WROQ, WSTZ

**THE STEP KINGS** 116/8  
*Right Is Wrong (Roadrunner)*  
Total Stations: 23  
Heavy (21+): 0  
Medium (14-20): 1 WAAF  
Light (Under 14): 22  
First Impressions: 4 KRXQ, WQXA, WRAT, WXRC

**ERIC CLAPTON & B.B. KING** 114/114  
*Riding With The King (Duck/Reprise)*  
Total Stations: 21  
Heavy (21+): 0  
Medium (14-20): 0  
Light (Under 14): 21  
First Impressions: 10 KGGO, KRZZ, KYYS, WBAB, WBLM, WDHA, WDVE, WFBQ, WKLC, WROQ

**STEVE EARLE** 91/41  
*Transcendental Blues (E-Squared/Artemis)*  
Total Stations: 14  
Heavy (21+): 0  
Medium (14-20): 0  
Light (Under 14): 14  
First Impressions: 6 KBSO, KMOD, WAPL, WKLC, WNCD, WROQ

**THE UNBAND** 82/-1  
*Geez Louise (TVT)*  
Total Stations: 13  
Heavy (21+): 1 KBSO  
Medium (14-20): 0  
Light (Under 14): 12

**FU MANCHU** 76/41  
*Over The Edge (Mammoth)*  
Total Stations: 9  
Heavy (21+): 1 KBSO  
Medium (14-20): 0  
Light (Under 14): 8  
First Impressions: 4 KBSO, KLBK, KZRQ, WXTM



Chart based on 30 stations. Charted on week ending May 14, 2000. This play. Moves based on sum of plays.

INDIGENOUS 190/3

Little Time (Pachyderm)

Total Stations: 22

Table with columns for station, song title, and chart position. Includes stations like MTV, KLOS, and WMMR.

KID ROCK 586/83

American Bad Ass (Top Dog/Lava/Atlantic)

Total Stations: 50

Table with columns for station, song title, and chart position. Includes stations like MTV, KLOS, and WMMR.

LIMP BIZKIT 661/21

Break Stuff (Flip/Interscope)

Total Stations: 50

Table with columns for station, song title, and chart position. Includes stations like MTV, KLOS, and WMMR.

LIMP BIZKIT 365/33

Take A Look Around (Hollywood)

Total Stations: 38

Table with columns for station, song title, and chart position. Includes stations like MTV, KLOS, and WMMR.

METALLICA 2103/106

I Disappear (Hollywood)

Total Stations: 97

Table with columns for station, song title, and chart position. Includes stations like MTV, KLOS, and WMMR.

NICKELBACK 1086/2

Leader Of Men (Roadrunner)

Total Stations: 78

Table with columns for station, song title, and chart position. Includes stations like MTV, KLOS, and WMMR.

THE NIXONS 343/33

First Trip To The Moon (Koch)

Total Stations: 30

Table with columns for station, song title, and chart position. Includes stations like MTV, KLOS, and WMMR.

THE OFFSPRING 234/84

Totalimortal (Elektra/EEG)

Total Stations: 37

Table with columns for station, song title, and chart position. Includes stations like MTV, KLOS, and WMMR.

ONE MINUTE SILENCE 349/7

Holy Man (V2)

Total Stations: 31

Table with columns for station, song title, and chart position. Includes stations like MTV, KLOS, and WMMR.

PAPA ROACH 482/72

Last Resort (DreamWorks)

Total Stations: 41

Table with columns for station, song title, and chart position. Includes stations like MTV, KLOS, and WMMR.

A PERFECT CIRCLE 1220/114

Judith (Virgin)

Total Stations: 74

Table with columns for station, song title, and chart position. Includes stations like MTV, KLOS, and WMMR.

PHISH 162/43

Heavy Things (Elektra/EEG)

Total Stations: 17

Table with columns for station, song title, and chart position. Includes stations like MTV, KLOS, and WMMR.

STAINED 982/7

Home (Flip/Elektra/EEG)

Total Stations: 61

Table with columns for station, song title, and chart position. Includes stations like MTV, KLOS, and WMMR.

STONE TEMPLE PILOTS 1289/109

Sour Girl (Atlantic)

Total Stations: 90

Table with columns for station, song title, and chart position. Includes stations like MTV, KLOS, and WMMR.

U.P.O. 836/61

Godless (Epic)

Total Stations: 69

Table with columns for station, song title, and chart position. Includes stations like MTV, KLOS, and WMMR.

# AIRPLAY Monitor **ROCK PANELS**

## MAINSTREAM ROCK (106)

### HERITAGE (54)

Albany, N.Y.  
Albuquerque, N.M.  
Allentown, Pa.  
Atlanta  
Burlington, Vt.  
Charleston, W.Va.  
Cincinnati  
Cleveland  
Columbus, Ga.  
Columbus, Ohio  
Des Moines, Iowa  
El Paso, Texas  
Green Bay, Wis.  
Greenville, S.C.  
Houston  
Indianapolis  
Jackson, Miss.  
Jacksonville, Fla.  
Johnson City, Tenn.  
Kansas City  
Knoxville, Tenn.  
Las Vegas  
Lexington, Ky.  
Long Island, N.Y.  
Los Angeles  
Louisville, Ky.  
McAllen, Texas

WPYX  
KZRR  
WZZO  
WKLS  
WIZN  
WKLC  
WEBN  
WNCX  
WVRK  
WLVQ  
KGGO  
KLAQ  
WAPL  
WROQ  
KLLO  
WFBQ  
WSTZ  
WFYV  
WRZK  
KYYS  
WIMZ  
KOMP  
WKQQ  
WBAB  
KLOS  
WTFX  
KFRQ

Memphis  
Milwaukee  
Montgomery, Ala.  
Morristown, N.J.  
New Haven, Conn.  
New Orleans  
Omaha, Neb.  
Philadelphia  
Phoenix  
Pittsburgh  
Portland, Maine  
Providence, R.I.  
Richmond, Va.  
Roanoke, Va.  
Rochester, N.Y.  
St. Louis  
San Bernardino, Calif.  
Santa Barbara, Calif.  
Shreveport, La.  
Springfield, Mo.  
Syracuse, N.Y.  
Tucson, Ariz.  
Tulsa, Okla.  
Watertown, N.Y.  
Wichita, Kan.  
Wilkes-Barre, Pa.  
Youngstown, Ohio

WEGR  
WLUM  
WAFX  
WDHA  
WPLR  
WKSJ  
KEZO  
WMMR  
KDKB  
WDVE  
WBLM  
WHJY  
WRXL  
WROV  
WCMP  
KSHE  
KCAL  
KTYD  
KTAL  
KXUS  
WAQX  
KLPX  
KMOD  
WOTT  
KRZZ  
WEZZ  
WNCD

### ACTIVE (52)

Albany, N.Y.  
Austin, Texas  
Bakersfield, Calif.  
Baltimore  
Boston  
Charlotte, N.C.  
Cleveland  
Colorado Springs, Colo.  
Columbus, Ohio  
Corpus Christi, Texas

WQBK  
KLBK  
KRAB  
WYYY  
WAAF  
WXRC  
WMMS  
KILQ  
WBZX  
KBSO  
KNCN  
KEGL  
WTUE  
KBPI  
KAZR  
WRIF  
KRZR  
WKLQ  
WXRA  
WTPY  
WQXA  
WCCC  
KQRC  
WMFS  
WZTA  
WLZR

Minneapolis  
Monmouth/Ocean, N.J.  
Norfolk, Va.  
Oklahoma City  
Omaha, Neb.  
Orlando, Fla.  
Pensacola, Fla.  
Philadelphia  
Phoenix  
Portland, Ore.  
Rochester, N.Y.  
Sacramento, Calif.  
Shreveport, La.  
St. Louis  
Salt Lake City  
San Antonio, Texas  
San Diego  
San Francisco  
Seattle  
Spokane, Wash.  
Springfield, Mo.  
Tampa, Fla.  
Toledo, Ohio  
  
Wichita, Kan.  
Wilkes-Barre, Pa.

KXXR  
WRAT  
WNOR  
KATT  
KRQC  
WJRR  
WTKX  
WYSP  
KUPD  
KUFO  
WNVE  
KRXQ  
KTUX  
WXTM  
KBER  
KISS  
KIOZ  
KSJO  
KISW  
KHTQ  
KZRQ  
WXTB  
WBUZ  
WIOT  
KICT  
WXBE

### MODERN ROCK (68)

Albany, N.Y.  
Albuquerque  
Atlanta  
Austin, Texas  
Birmingham  
Boston

WEQX  
KTEG  
WNNX  
KROX  
WRAX  
WBCN  
WFNX  
WEDG  
WBTZ  
WAVF  
WEND  
WKQX  
WOXY  
WARQ  
WVCD  
WZAZ  
KRAD  
KDGE  
WXEG  
KTCL  
KXPK  
CIMX  
KFRR  
WJBX  
WGRD  
WMRQ  
KPOI  
KTBY  
WRZX  
WPLA  
WNFZ  
KFTE  
KXTE  
WXZZ

Little Rock, Ark.  
Long Island, N.Y.  
Los Angeles  
Monmouth/Ocean, N.J.  
Monterey, Calif.  
New Bern, N.C.  
New Orleans  
New York  
Norfolk, Va.  
Philadelphia  
Phoenix  
Pittsburgh  
Portland, Ore.  
Portland, Maine  
Providence, R.I.  
Richmond, Va.  
Riverside, Calif.  
Sacramento, Calif.  
St. Louis  
Salt Lake City  
  
San Diego  
San Francisco  
Santa Barbara, Calif.  
Savannah, Ga.  
Seattle  
Spokane, Wash.  
Syracuse, N.Y.  
Toronto  
Tucson, Ariz.  
Tulsa, Okla.  
Washington, D.C.  
West Palm Beach, Fla.

KLEC  
WLIR  
KROQ  
WHTG  
KMBY  
WXNR  
KKND  
WXRK  
WROX  
WPLY  
KEDJ  
WDXD  
KNRK  
WCYY  
WBRU  
WDYL  
KCCX  
KWOD  
KPNT  
KENZ  
KXRX  
XETRA  
KITS  
KJEE  
WVVV  
KNDD  
KAEP  
WKRL  
CFNY  
KFMA  
KMYZ  
WHFS  
WVDC  
WPBZ

### TRIPLE-A (19)

Austin, Texas  
Boston  
  
Burlington, Vt.  
Chattanooga, Tenn.  
Chicago  
Dallas  
Denver  
Detroit  
Indianapolis

KGSR  
WBOS  
WXRV  
WNCS  
WDOD  
WXRT  
KKMR  
KBCO  
CIDR  
WTTS

Los Angeles  
Minneapolis  
Monterey, Calif.  
Nashville  
Norfolk, Va.  
Portland, Ore.  
San Diego  
San Francisco  
Seattle

KACD  
KTCZ  
KPIG  
WRLT  
WKOC  
KINK  
KXST  
KFOG  
KMTT

# AIRPLAY Monitor

# HERITAGE ROCK AIRPLAY

FOR WEEK ENDING MAY 14, 2000

THIS WEEK	LAST WEEK	WKS. ON CHART	Compiled from a national sample of data supplied by Broadcast Data Systems to Rock Airplay Monitor. 54 heritage rock stations are electronically monitored 24 hours a day, 7 days a week. © 2000 Billboard/BPI Communications.		DETECTIONS		
			TITLE/IMPRINT/PROMOTION LABEL	ARTIST	TW	LW	
			<b>★ ★ ★ No. 1 ★ ★ ★</b>				
1	1	17	KRYPTONITE REPUBLIC/UNIVERSAL 4 weeks at No. 1	3 DOORS DOWN	937	939	
2	3	4	I DISAPPEAR HOLLYWOOD	METALLICA	734	692	
3	7	6	WITH ARMS WIDE OPEN WIND-UP	CREED	733	615	
4	2	18	OTHERSIDE WARNER BROS.	RED HOT CHILI PEPPERS	733	756	
5	5	5	NOTHING AS IT SEEMS EPIC	PEARL JAM	633	655	
6	4	15	STIFF UPPER LIP EASTWEST/EEG	AC/DC	579	670	
7	6	9	WORKIN' IT WARNER BROS.	DON HENLEY	575	623	
8	9	6	SOUR GIRL ATLANTIC	STONE TEMPLE PILOTS	464	452	
9	8	11	WHAT IS AND WHAT SHOULD NEVER BE MUSICMAKER.COM	JIMMY PAGE & THE BLACK CROWES	462	545	
10	11	5	BENT LAVA/ATLANTIC	MATCHBOX TWENTY	403	405	
11	10	38	HIGHER WIND-UP	CREED	393	406	
12	12	26	NO LEAF CLOVER ELEKTRA/EEG	METALLICA	384	379	
13	18	13	LEADER OF MEN ROADRUNNER	NICKELBACK	300	289	
14	15	34	LEARN TO FLY ROSWELL/RCA	FOO FIGHTERS	281	301	
15	14	13	NEW BEGINNING CAPITOL	STIR	250	339	
16	19	23	ONLY GOD KNOWS WHY TOP DOG/LAVA/ATLANTIC	KID ROCK	247	285	
17	22	6	BROADWAY WARNER BROS.	GOO GOO DOLLS	246	229	
18	16	10	NOTHING TO PROVE HOLLYWOOD	CAROLINE'S SPINE	244	295	
19	13	9	YOUNG LUST (LIVE) COLUMBIA	PINK FLOYD	242	367	
20	20	25	VOODOO REPUBLIC/UNIVERSAL	GODSMACK	241	273	
21	23	19	WHAT IF WIND-UP	CREED	231	222	
22	17	18	WAS GIANT/REPRISE	KENNY WAYNE SHEPHERD BAND	230	290	
23	25	5	GODLESS EPIC	U.P.O.	212	188	
24	21	11	PLAYING WITH FIRE ARISTA	SHANNON CURFMAN	184	261	
25	27	3	BREAKOUT ROSWELL/RCA	FOO FIGHTERS	173	151	
26	26	8	SILVER FUTURE RESTLESS	MONSTER MAGNET	170	170	
27	30	4	MRS. POTTER'S LULLABY DGC/INTERSCOPE	COUNTING CROWS	162	134	
28	35	3	HEAVY THINGS ELEKTRA/EEG	PHISH	158	114	
29	29	4	JUDITH VIRGIN	A PERFECT CIRCLE	153	135	
30	33	3	WARM MACHINE TRAUMA	BUSH	152	120	
31	31	13	HOME FLIP/ELEKTRA/EEG	STAINED	145	134	
32	28	3	LITTLE TIME PACHYDERM	INDIGENOUS	144	138	
33	32	7	PARDON ME IMMORTAL/EPIC	INCUBUS	128	131	
			<b>★ GREATEST GAINER/MOST NEW STATIONS ★</b>				
34	<b>NEW</b>		DRIFTERS CMC INTERNATIONAL	PAUL RODGERS	127	5	
35	24	16	BAD LITTLE DOGGIE CAPRICORN/IDJMG	GOVT MULE	127	191	
36	36	3	SPARKS ARE GONNA FLY COLUMBIA	THE CATHERINE WHEEL	115	108	
37	<b>NEW</b>		RIDING WITH THE KING DUCK/REPRISE	ERIC CLAPTON & B.B. KING	113	0	
38	<b>NEW</b>		IT'S MY LIFE ISLAND/IDJMG	BON JOVI	107	35	
39	34	5	WONDERLAND JERICHO/SIRE	WONDERLAND	107	116	
40	39	2	IN THE FLESH (LIVE) COLUMBIA	PINK FLOYD	98	92	

Songs ranked by number of detections. ○ Songs showing an increase in detections over the previous week, regardless of chart movement. A song that has been on the chart for more than 20 weeks will generally not receive a bullet, even if it registers an increase in detections. Airpower awarded to songs appearing in the top 20 on both the Airplay and Audience charts for the first time with increases in both detections and audience. Greatest Gainer awarded to the song with the largest increase in detections. Most New Stations awarded to the song registering six or more detections at the most stations for the first time this week. A song with a gain in detections over the previous week is placed first if tied with a song with a decline over the same period. When tied songs are each gaining detections or each losing detections, the song being played on more stations is placed first. Songs below the top 20 become re-entries and are removed from the chart after 26 weeks.

GREATEST GAINERS		HERITAGE ROCK	
INCREASE IN DETECTIONS			
<b>PAUL RODGERS • Drifters (CMC INTERNATIONAL)</b>		<b>+122</b>	
WOTT +12, WZZO +12, KTYD +10, WEGR +10, WKSJ +8, WKLC +8, WROQ +7, KRZZ +6, WAFX +6, KGGO +6			
<b>CREED • With Arms Wide Open (WIND-UP)</b>		<b>+118</b>	
WTFX +18, WAPL +15, KTAL +12, WIZN +9, KXUS +7, WROV +6, KLAQ +6, WMMR +6, KZRR +5, WLUM +5			
<b>ERIC CLAPTON &amp; B.B. KING • Riding With The King (DUCK/REPRISE)</b>		<b>+113</b>	
WBLM +13, WDHA +12, WDVE +11, KRZZ +10, KYYS +9, WKLC +9, WBAB +9, WROQ +7, WFBQ +7, KGGO +6			
<b>BON JOVI • It's My Life (ISLAND/IDJMG)</b>		<b>+72</b>	
WOTT +14, KDKB +10, KLOS +7, WSTZ +6, KXUS +6, WROQ +6, WDHA +5, WNCD +5, KFRQ +4, WFYV +3			
<b>JESSE JAMES DUPREE • Mainline (v2)</b>		<b>+46</b>	
KOMP +8, WKSJ +7, WOTT +5, WSTZ +5, WLUM +5, WRZK +4, KFRQ +3, WROV +3, KLAQ +2, KSHE +2			

THIS WEEK	LAST WEEK	WKS. ON CHART	TITLE/IMPRINT/PROMOTION LABEL	ARTIST	DETECTIONS	
					TW	LW
★★★★ No. 1 ★★★★★						
1	1	18	KRYPTONITE <small>REPRISE/ATLANTIC</small> 7 weeks at No. 1	3 DOORS DOWN	1616	1584
2	2	4	I DISAPPEAR <small>HOLLYWOOD</small>	METALLICA	1369	1305
3	3	6	JUDITH <small>VIRGIN</small>	A PERFECT CIRCLE	1067	971
4	7	7	WITH ARMS WIDE OPEN <small>WIND-UP</small>	CREED	1012	894
5	6	5	NOTHING AS IT SEEMS <small>EPIC</small>	PEARL JAM	964	950
6	5	15	MAKE ME BAD <small>IMMORTAL/EPIC</small>	KORN	928	942
7	8	28	PARDON ME <small>IMMORTAL/EPIC</small>	INCUBUS	864	868
8	9	17	HOME <small>FLIP/ELEKTRA/EEG</small>	STAIN'D	837	841
9	12	6	SOUR GIRL <small>ATLANTIC</small>	STONE TEMPLE PILOTS	825	728
10	4	19	OTHERSIDE <small>WARNER BROS.</small>	RED HOT CHILI PEPPERS	790	974
11	11	13	LEADER OF MEN <small>ROADRUNNER</small>	NICKELBACK	786	795
12	10	29	VOODOO <small>REPUBLIC/UNIVERSAL</small>	GODSMACK	759	811
13	13	22	WHAT IF <small>WIND-UP</small>	CREED	673	700
14	14	9	SILVER FUTURE <small>RESTLESS</small>	MONSTER MAGNET	637	640
15	15	13	BREAK STUFF <small>FLIP/INTERSCOPE</small>	LIMP BIZKIT	629	612
16	16	6	GODLESS <small>EPIC</small>	U.P.O.	624	587
17	18	14	SLEEP NOW IN THE FIRE <small>EPIC</small>	RAGE AGAINST THE MACHINE	568	575
18	20	3	AMERICAN BAD ASS <small>TOP DOG/LAVA/ATLANTIC</small>	KID ROCK	529	458
19	21	10	NOW YOU KNOW <small>THE ENCLAVE/ISLAND/IDJMG</small>	FULL DEVIL JACKET	497	433
20	17	26	NO LEAF CLOVER <small>ELEKTRA/EEG</small>	METALLICA	497	565
21	23	4	BREAKOUT <small>ROSWELL/URCA</small>	FOO FIGHTERS	492	415
22	19	12	SATISFIED <small>REPRISE</small>	8STOPS7	483	500
23	28	8	LAST RESORT <small>DREAMWORKS</small>	PAPA ROACH	445	387
24	32	3	WARM MACHINE <small>TRALIUMA</small>	BUSH	411	325
25	24	24	ONLY GOD KNOWS WHY <small>TOP DOG/LAVA/ATLANTIC</small>	KID ROCK	380	398
26	25	15	WAFFLE <small>TVT</small>	SEVENDUST	380	394
27	22	11	REVOLUTION IS MY NAME <small>EASTWEST/EEG</small>	PANTERA	373	420
28	31	5	STUPIFY <small>GIANT/REPRISE</small>	DISTURBED	369	359
29	33	3	TAKE A LOOK AROUND <small>HOLLYWOOD</small>	LIMP BIZKIT	353	318
30	35	6	HOLY MAN <small>V2</small>	ONE MINUTE SILENCE	329	314
31	27	8	THE BEST THINGS <small>REPRISE</small>	FILTER	326	377
32	29	12	NEW BEGINNING <small>CAPITOL</small>	STIR	321	369
33	39	2	BASIC BREAKDOWN <small>HOLLYWOOD</small>	APARTMENT 26	311	224
34	26	11	SPIDERS <small>AMERICAN/COLUMBIA</small>	SYSTEM OF A DOWN	298	404
35	30	15	STIFF UPPER LIP <small>EASTWEST/EEG</small>	AC/DC	276	366
★ GREATEST GAINER/MOST NEW STATIONS ★						
36	<b>NEW</b>		CHANGE (IN THE HOUSE OF FLIES) <small>MAVERICK</small>	DEFTONES	266	81
37	34	13	STAND INSIDE YOUR LOVE <small>VIRGIN</small>	THE SMASHING PUMPKINS	263	309
38	38	2	FIRST TRIP TO THE MOON <small>KOCH</small>	THE NIXONS	248	223
39	<b>RE-ENTRY</b>		ADAM'S SONG <small>MCA</small>	BLINK-182	247	228
40	37	3	SUPERNOVA GOES POP <small>DREAMWORKS</small>	POWERMAN 5000	222	232

Songs ranked by number of detections. Songs showing an increase in detections over the previous week, regardless of chart movement. A song that has been on the chart for more than 20 weeks will generally not receive a bullet, even if it registers an increase in detections. Airpower awarded to songs appearing in the top 20 on both the Airplay and Audience charts for the first time with increases in both detections and audience. Greatest Gainer awarded to the song with the largest increase in detections. Most New Stations awarded to the song registering six or more detections at the most stations for the first time this week. A song with a gain in detections over the previous week is placed first if tied with a song with a decline over the same period. When tied songs are each gaining detections or each losing detections, the song being played on more stations is placed first. Songs below the top 20 become recurrenents and are removed from the chart after 26 weeks.

**GREATEST GAINERS**

**ACTIVE ROCK**

INCREASE IN DETECTIONS

<b>DEFTONES • Change (In The House Of Flies) (MAVERICK)</b>	<b>+185</b>
KAZR +23, WKLQ +20, WXTM +20, WAAF +14, WCCC +11, WNOR +10, WQXA +9, KILQ +8, KRQC +7, KUFO +7	
<b>CREED • With Arms Wide Open (WIND-UP)</b>	<b>+118</b>
WXRA +13, KAZR +13, WXBE +12, WXTB +12, WZTA +11, WIYY +10, WAAF +9, KICT +8, KLBK +8, KUPD +8	
<b>STONE TEMPLE PILOTS • Sour Girl (ATLANTIC)</b>	<b>+97</b>
KRAB +27, KZRQ +17, KAZR +16, KICT +14, WRAT +13, WTPT +12, WBZX +5, KBSO +5, WQBK +4, WZTA +4	
<b>A PERFECT CIRCLE • Judith (VIRGIN)</b>	<b>+96</b>
KBSO +46, KZRQ +14, KHTQ +11, KRAB +8, KLBK -7, WIOT +6, WXRA +5, WQBK +4, KNKN +4, KRQC +4	
<b>APARTMENT 26 • Basic Breakdown (HOLLYWOOD)</b>	<b>+87</b>
KBSO +22, WXRC +9, WKLQ +9, KICT +8, KRQC +6, KHTQ +5, WXBE +5, WXTB +5, WYSP +4, KZRQ +3	

**ONE MINUTE SILENCE HOLY MAN**

THE FIRST TRACK FROM THEIR EAR NUMBING ALBUM 'BUY NOW... SAVED LATER' ON YOUR DESK NOW!

US SUMMER TOUR INCLUDING  
WARPED AND TATTOO THE EARTH!



MONITOR ACTIVE ROCK: (35) - (30)  
MAINSTREAM ROCK: DEBUT (39)

NEW THIS WEEK:  
WQLZ WRZK

NOW ON OVER 50 GREAT ROCK STATIONS  
INCLUDING:

- |      |      |      |      |
|------|------|------|------|
| WAAF | WCCC | WRIF | WLZR |
| WBZX | WXTM | WXTB | KUPD |
| KRXQ | KBPI | WXRC | WJRR |
| WNOR | KQRC | WKLO | WJJO |



MANAGEMENT: ANDY FARROW AND JEFF C. JEFFERSON SOUTHERN MUSIC. PRODUCED BY COLIN RICHARDSON  
© 2000 V2 RECORDS INC. WWW.OMS2MUSIC.COM

Playlists are listed in order of TSA weekly curve, beginning with the highest-charting station. Curves are updated twice yearly following the release of the spring and fall Arbitron surveys. The number of stations shown each week varies depending upon space. First Impressions (FI) denotes songs with 6 or more detections at station for first time this week.

TRIPLE-A POWER PLAYLISTS™

WXRT Chicago
VP/Pgm: Norm Winer
MD: Patty Martin
Infinity 773-777-1700
93.1 FM RADIO CHICAGO

KFOG San Francisco
PD: Dave Benson
APD: Bill Evans
MD: Haley Jones
Susquehanna 415-817-5364
KFOG 104.5 97.7

WBOS Boston
PD: Shirley Maldonado
MD: Amy Brooks
Greater Media 617-822-9600
WBOS 92.9 FM

KBCO Denver
Dir/Pgm: Mike O'Connor
PD: Scott Arbough
Clear Channel 303-444-5600
KBCO 97.3 FM

KKMR Dallas
PD: Scott Strang
Susquehanna 214-526-2400
merge 93.1 FM

KACD Los Angeles
Pgm. Mgr.: Keith Cunningham
MD: Nicole Sandler
Clear Channel 310-451-1031
Channel 103.1 FM

KMTT Seattle
SM/Interim PD: Chris Mays
MD: Shawn Stewart
Entercom 206-233-1037
The Mountain 93.1 FM

KTCZ Minneapolis
PD: Lauren MacLeash
MD: Mike Wolf
AMFM 612-339-0000
Cities 97.1 FM

KINK Portland, OR
PD: Dennis Constantine
MD: Kevin Welch
Infinity 503-226-5080
kink fm 102

KXST San Diego
GM: Bob Hughes
PD: Dona Shaieb
Compass Radio 858-678-0102
SETS 102.1 FM

WKOC Norfolk
PD: Paul Shugrue
Sinclair 757-640-8500
The Oasis 102.1 FM

WDDO Chattanooga
OM: Dan Howard
PD/MD: Jeff Martin
Bahakel 423-321-6200
The Mountain 96.5 FM

TRIPLE-A AUDIENCE

Table with columns: THIS WEEK, LAST WEEK, WKAS ON CHART, TITLE/IMPR/PROMOTION LABEL, ARTIST, TW, LW. Includes songs like 'BENT' by Matchbox Twenty, 'Desert Rose' by Sting, etc.

Compiled from a national sample of data supplied by Broadcast Data Systems to Rock Airplay Monitor. 19 Triple-A stations are electronically monitored 24 hours a day, 7 days a week. Songs ranked by number of audience, corrected by cross-referencing exact times of airplay with Arbitron listener data. (C) 2000 Billboard/BPI Communications.

WXRW Boston
PD: Joanne Doody
Interim MD: Keith Andrews
Northeast 978-374-4733
92.5 FM

CIDR Detroit
PD: Wendy Duff
CHUM Group 519-258-8888
THE RIVER 93.9 FM

WTTS Indianapolis
PD: Rich Anton
MD: Marie McCallister
Sarkis Tarzian 812-332-3366
92.3 FM

KGRS Austin
OM: Jeff Carrol
PD: Jody Denberg
MD: Susan Castile
LBJS Broadcasting 512-832-4000
101.1 FM

KPIG Monterey
PD/MD: Laura Hopper
New Wave 831-722-9000
LIGHTNING 100

WRLT Nashville
OM/MD: David Hall
APD/MD: Keith Coes
Tuned In 615-242-5600
LIGHTNING 100





## THE Billboard 200



THE CHART, REPRINTED FROM BILLBOARD MAGAZINE, LISTS THE TOP-SELLING ALBUMS COMPILED FROM A NATIONAL SAMPLE OF RETAIL STORE, MASS MERCHANT, AND INTERNET SALES REPORTS COLLECTED, COMPILED, AND PROVIDED BY SOUNDSCAN, INC

THIS WEEK	LAST WEEK	2 WKS AGO	WKS. ON CHART	ARTIST	IMPRINT & CATALOG NUMBER/DISTRIBUTING LABEL (SUGGESTED LIST PRICE)	TITLE	PEAK POSITION
<b>Billboard Issue Date: MAY 20, 2000</b>							
<b>No. 1</b>							
1	1	1	7	'N SYNC	JIVE 41702 (11.98/18.98)	NO STRINGS ATTACHED	1
2	<b>NEW</b>	1	1	504 BOYZ	NO LIMIT 50722*/PRIORITY (11.98/17.98)	GOODFELLAS	2
3	4	3	23	SISQO	DRAGON/DEF SOUL 546816*/IDJMG (12.98/18.98)	UNLEASH THE DRAGON	2
4	3	2	3	JOE	JIVE 41703 (11.98/17.98)	MY NAME IS JOE	2
5	2	—	2	TONI BRAXTON	LAFACE 26069/ARISTA (11.98/18.98)	THE HEAT	2
6	6	4	47	SANTANA	ARISTA 19080 (11.98/18.98)	SUPERNATURAL	1
7	8	8	32	CREED	WIND-UP 13053* (11.98/17.98)	HUMAN CLAY	1
8	5	—	2	CYPRESS HILL	COLUMBIA 69990*/CRG (11.98 EQ/18.98)	SKULL & BONES	5
9	7	5	41	DESTINY'S CHILD	COLUMBIA 69870*/CRG (11.98 EQ/17.98)	THE WRITING'S ON THE WALL	5
10	13	18	19	JAY-Z	ROC-A-FELLA/DEF JAM 546822*/IDJMG (12.98/18.98)	VOL. 3... LIFE AND TIMES OF S. CARTER	1
11	12	10	71	KID ROCK	LAVA/ATLANTIC 83119*/AG (12.98/18.98)	DEVIL WITHOUT A CAUSE	4
12	9	11	25	DR. DRE	AFTERMATH 490486*/INTERSCOPE (12.98/18.98)	DR. DRE — 2001	2
13	10	15	20	DMX	RUFF RYDERS/DEF JAM 546933*/IDJMG (12.98/18.98)	...AND THEN THERE WAS X	1
14	17	12	36	DIXIE CHICKS	MONUMENT 69678/SONY (NASHVILLE) (11.98 EQ/17.98)	FLY	1
15	16	13	41	MACY GRAY	EPIC 69490* (11.98 EQ/17.98)	ON HOW LIFE IS	4
16	25	20	26	FAITH HILL	WARNER BROS. (NASHVILLE) 47373/WRN (12.98/18.98)	BREATHE	1
17	14	14	6	SOUNDTRACK	BLACKGROUND 49052*/VIRGIN (11.98/17.98)	ROMEO MUST DIE — THE ALBUM	3
18	20	6	37	CHRISTINA AGUILERA	RCA 67690 (11.98/17.98)	CHRISTINA AGUILERA	1
19	11	7	4	NO DOUBT	TRAUMA 490441*/INTERSCOPE (12.98/18.98)	RETURN OF SATURN	2
20	24	27	13	3 DOORS DOWN	REPUBLIC 153920/UNIVERSAL (11.98/17.98)	THE BETTER LIFE	20

○ Albums with the greatest sales gains. ● Recording Industry Assn. Of America (RIAA) certification for sales of 500,000 album units. ▲ RIAA certification for sales of 1 million units (Platinum). ◆ RIAA certification for net shipment of 10 million units (Diamond). Numerical following Platinum or Diamond symbol indicates album's multi-platinum level. Greatest Gainer shows chart's largest unit increase. Pacesetter indicates biggest percentage growth. © 2000 Billboard/BPI Communications and SoundScan, Inc.

## AIRPLAY LEADERBOARD

THE STATIONS THAT BREAK THE HITS

### MODERN ROCK

<b>#1</b>		<b>KWOD</b> Sacramento, CA PD: Ron Bunce Airplay Leader Designations: 3	#2	KXTE, Las Vegas, NV (PD/MD: Wellington/Ripley)	3
			#3	KNDD, Seattle, WA (PD/MD: Manning/Monroe)	2
			#4	KRAD, Corpus Christi, TX (PD: Smith)	2
			#5	WBCN, Boston, MA (PD/MD: Oedipus/Strick)	1

### MAINSTREAM ROCK

<b>#1</b>		<b>KRXQ</b> Sacramento, CA PD: Curtiss Johnson MD: Kylee Brooks Airplay Leader Designations: 4	#2	WMFS, Memphis, TN (PD/MD: Cressman/Clapper)	2
			#3	WXTM, St. Louis, MO (PD/MD: Mattern/Fife)	2
			#4	KUPD, Phoenix, AZ (PD/MD: Jeffries/Ventura)	1
			#5	WZTA, Miami, FL (PD/MD: Steele/Kimba)	1

The Airplay Leaderboard ranks taste-maker stations that have been the most successful in identifying future hit songs as measured by the amount of AIRPOWER titles for which they were Airplay Leaders. Refer to each format's IMPACT! page to see this week's Airplay Leaders.

### MODERN AC AIRPLAY

THIS WEEK	LAST WEEK	WKS. ON CHART	TITLE/IMPRINT/PROMOTION LABEL	ARTIST	DETECTIONS	
					TW	LW
<b>★★★★ No. 1 ★★★★★</b>						
1	1	27	EVERYTHING YOU WANT RCA	VERTICAL HORIZON	1761	1890
2	2	22	NEVER LET YOU GO ELEKTRA/EEG	THIRD EYE BLIND	1432	1519
<b>★ GREATEST GAINER ★</b>						
3	4	5	BENT LAVA/ATLANTIC	MATCHBOX TWENTY	1399	1276
4	3	22	I TRY EPIC	MACY GRAY	1397	1444
5	5	22	HIGHER WIND-UP	CREED	1326	1250
6	7	13	OTHERSIDE WARNER BROS.	RED HOT CHILI PEPPERS	1250	1222
7	8	8	BROADWAY WARNER BROS.	GOO GOO DOLLS	1240	1170
8	6	17	TELLING STORIES (THERE IS FICTION IN THE SPACE BETWEEN) ELEKTRA/EEG	TRACY CHAPMAN	1164	1241
9	9	47	MEET VIRGINIA AWARE/COLUMBIA	TRAIN	1044	1085
10	13	10	DESERT ROSE A&M/INTERSCOPE	STING FEATURING CHEB MAMI	1008	936
11	16	7	ABSOLUTELY (STORY OF A GIRL) 550 MUSIC/550-WORK	NINE DAYS	978	892
12	14	9	STEAL MY KISSES VIRGIN	BEN HARPER AND THE INNOCENT CRIMINALS	972	898
13	12	16	BREATHE WARNER BROS.	FAITH HILL	916	944
14	11	15	I BELONG TO YOU VIRGIN	LENNY KRAVITZ	915	984
15	10	32	THEN THE MORNING COMES INTERSCOPE	SMASH MOUTH	914	992
16	18	7	MARIA MARIA ARISTA	SANTANA FEATURING THE PRODUCT G&B	829	782
17	15	48	SMOOTH ARISTA	SANTANA FEATURING ROB THOMAS	815	896
18	17	13	I THINK GOD CAN EXPLAIN C2	SPLENDER	799	784
19	19	26	TAKE A PICTURE REPRISE	FILTER	650	700
20	20	49	BLACK BALLOON WARNER BROS.	GOO GOO DOLLS	600	655

The chart, reprinted from Top 40 Airplay Monitor, is compiled from a national sample of data supplied by Broadcast Data Systems. 40 modern AC stations are electronically monitored 24 hours a day, 7 days a week. Songs ranked by number of detections. ○ Songs showing an increase in detections over the previous week, regardless of chart movement. A song that has been on the chart for more than 20 weeks will generally not receive a bullet, even if it registers an increase in detections. Airpower awarded to songs appearing in the top 20 on both the Airplay and Audience charts for the first time with increases in both detections and audience. Greatest Gainer awarded to the song with the largest increase in detections. Most New Stations awarded to the song registering six or more detections at the most stations for the first time this week. A song with a gain in detections over the previous week is placed first if tied with a song with a decline over the same period. When tied songs are each gaining detections or each losing detections, the song being played on more stations is placed first. ©2000 Billboard/BPI Communications.

## ON YOUR DESK! Going For Airplay This Week

	MODERN	MAINSTREAM	TRIPLE-A
<b>311 • Large In The Margin (CAPRICORN/IDJMG)</b>	✓	✓	
<b>ADMIRAL TWIN • Unlucky Ones (MOJO/UNIVERSAL)</b>	✓		
<b>BILLY BRAGG &amp; WILCO • Secret Of The Sea (ELEKTRA/EEG)</b>			✓
<b>DEBORAH COLEMAN • Confused (BLIND PIG)</b>		✓	
<b>EVERCLEAR • Wonderful (CAPITOL)</b>	✓	✓	✓
<b>GOVT MULE • Fallen Down (CAPRICORN/IDJMG)</b>		✓	✓
<b>P.O.D. • Rock The Party (Off The Hook) (ATLANTIC)</b>	✓	✓	
<b>QUEENS OF THE STONE AGE • The Lost Art Of Keeping A Secret (INTERSCOPE)</b>		✓	
<b>SAMANTHA 7 • I Wanna Be Famous (C2)</b>	✓	✓	
<b>THE SMASHING PUMPKINS • I Of The Mourning (VIRGIN)</b>	✓	✓	
<b>WONDERLAND • Wonderland (JERICHO/SIRE)</b>	✓		

To be included contact Anthony Colombo at 212-536-5064 or email acolombo@airplaymonitor.com



# We're headin' downtown...

THE BILLBOARD MUSIC GROUP

is moving on down to new space on June 23rd.

Our new address: 770 Broadway, New York, NY 10003

Stay tuned for more details...



THIS WEEK	LAST WEEK	WKS. ON CHART	MODERN ROCK		DETECTIONS		
			TITLE/IMPRINT/PROMOTION LABEL	ARTIST	TW	LW	
			<b>*** No. 1 ***</b>				
1	1	10	KRYPTONITE <small>REPUBLIC/COLUMBIA</small>	3 DOORS DOWN	2237	2094	
2	2	11	ADAM'S SONG <small>MCA</small>	BLINK-182	2018	2039	
3	3	22	OTHERSIDE <small>WARNER BROS.</small>	RED HOT CHILI PEPPERS	1734	1932	
4	5	8	WITH ARMS WIDE OPEN <small>WIND-UP</small>	CREED	1712	1574	
5	4	29	PARDON ME <small>IMMORTAL/EPIC</small>	INCUBUS	1630	1707	
6	6	6	SOUR GIRL <small>ATLANTIC</small>	STONE TEMPLE PILOTS	1562	1540	
7	8	15	MAKE ME BAD <small>IMMORTAL/EPIC</small>	KORN	1408	1376	
8	10	9	BREAKOUT <small>ROSWELL/RCA</small>	FOO FIGHTERS	1382	1303	
9	7	15	VOODOO <small>REPUBLIC/UNIVERSAL</small>	GODSMACK	1314	1383	
10	13	7	ABSOLUTELY (STORY OF A GIRL) <small>550 MUSIC/550-WORK</small>	NINE DAYS	1255	1240	
11	15	8	SO SAD TO SAY <small>BIG RIG/ISLAND/IDJMG</small>	THE MIGHTY MIGHTY BOSSTONES	1241	1153	
12	14	5	JUDITH <small>VIRGIN</small>	A PERFECT CIRCLE	1227	1168	
13	11	5	NOTHING AS IT SEEMS <small>EPIC</small>	PEARL JAM	1200	1262	
14	12	14	SLEEP NOW IN THE FIRE <small>EPIC</small>	RAGE AGAINST THE MACHINE	1187	1247	
15	9	24	MISERABLE <small>RCA</small>	LIT	1153	1338	
16	16		BENT <small>LAVA/ATLANTIC</small>	MATCHBOX TWENTY	1072	1077	
17	17	4	I DISAPPEAR <small>HOLLYWOOD</small>	METALLICA	1038	1028	
			<b>** AIRPOWER **</b>				
18	27	4	BOYZ-N-THE HOOD <small>FAMM PUBLISHING/UNIVERSAL</small>	DYNAMITE HACK	985	783	
19	19	12	BREAK STUFF <small>FLIP/INTERSCOPE</small>	LIMP BIZKIT	944	957	
			<b>** AIRPOWER **</b>				
20	26	5	TAKE A LOOK AROUND <small>HOLLYWOOD</small>	LIMP BIZKIT	931	786	

THIS WEEK	LAST WEEK	WKS. ON CHART	TRIPLE-A		DETECTIONS		
			TITLE/IMPRINT/PROMOTION LABEL	ARTIST	TW	LW	
			<b>*** No. 1 ***</b>				
1	1	15	DESERT ROSE <small>AMERICAN/INTERSCOPE</small>	STING FEATURING CHEB MAMI	389	374	
2	2	5	BENT <small>LAVA/ATLANTIC</small>	MATCHBOX TWENTY	384	344	
3	6	10	MRS. POTTER'S LULLABY <small>DGC/INTERSCOPE</small>	COUNTING CROWS	314	305	
4	3	22	EVERYTHING YOU WANT <small>RCA</small>	VERTICAL HORIZON	304	321	
5	4	15	THINGS HAVE CHANGED <small>COLUMBIA</small>	BOB DYLAN	297	314	
6	8	17	NEVER LET YOU GO <small>ELEKTRA/VEEG</small>	THIRD EYE BLIND	270	257	
7	5	17	STEAL MY KISSES <small>VIRGIN</small>	BEN HARPER AND THE INNOCENT CRIMINALS	270	308	
8	7	19	TELLING STORIES (THERE IS FICTION IN THE SPACE BETWEEN) <small>ELEKTRA/VEEG</small>	TRACY CHAPMAN	254	279	
9	9	6	I'M GONNA MAKE YOU LOVE ME <small>AMERICAN/COLUMBIA</small>	THE JAYHAWKS	245	238	
10	10	5	HEAVY THINGS <small>ELEKTRA/VEEG</small>	PHISH	239	238	
11	12	8	RAZOR LOVE <small>REPRISE</small>	NEIL YOUNG	196	186	
12	11	8	WORKIN' IT <small>WARNER BROS.</small>	DON HENLEY	176	188	
13	13	6	I DON'T MAKE PROMISES (I CAN'T BREAK) <small>ARISTA</small>	SHANNON CURFMAN	173	171	
14	14	13	I AM AWARE <small>COLUMBIA</small>	TRAIN	169	170	
15	17	3	JACK OF SPEED <small>GIANT/REPRISE</small>	STEELY DAN	168	161	
16	19	2	BROADWAY <small>WARNER BROS.</small>	GOO GOO DOLLS	151	146	
17	<b>NEW</b>		BABY <small>RCA</small>	ROBERT BRADLEY'S BLACKWATER SURPRISE	149	143	
18	20	10	FREE TO GO <small>INTERSCOPE</small>	FOLK IMPLOSION	149	146	
19	15	14	THE GROUND BENEATH HER FEET <small>INTERSCOPE</small>	U2	144	163	
20	<b>NEW</b>		SOUR GIRL <small>ATLANTIC</small>	STONE TEMPLE PILOTS	142	107	

THIS WEEK	LAST WEEK	WKS. ON CHART	MAINSTREAM ROCK		DETECTIONS		
			TITLE/IMPRINT/PROMOTION LABEL	ARTIST	TW	LW	
			<b>*** No. 1 ***</b>				
1	1	17	KRYPTONITE <small>REPUBLIC/COLUMBIA</small>	3 DOORS DOWN	2553	2523	
2	2	4	I DISAPPEAR <small>HOLLYWOOD</small>	METALLICA	2103	1997	
			<b>* GREATEST GAINER *</b>				
3	5	6	WITH ARMS WIDE OPEN <small>WIND-UP</small>	CREED	1745	1509	
4	4	5	NOTHING AS IT SEEMS <small>EPIC</small>	PEARL JAM	1597	1605	
5	3	18	OTHERSIDE <small>WARNER BROS.</small>	RED HOT CHILI PEPPERS	1523	1730	
6	6	6	SOUR GIRL <small>ATLANTIC</small>	STONE TEMPLE PILOTS	1289	1180	
7	7	5	JUDITH <small>VIRGIN</small>	A PERFECT CIRCLE	1220	1106	
8	9	13	LEADER OF MEN <small>ROADRUNNER</small>	NICKELBACK	1086	1084	
9	8	28	VOODOO <small>REPUBLIC/UNIVERSAL</small>	GODSMACK	1000	1084	
10	12	26	PARDON ME <small>IMMORTAL/EPIC</small>	INCUBUS	992	999	
11	13	16	HOME <small>FLIP/ELEKTRA/VEEG</small>	STAIN'D	982	975	
12	11	15	MAKE ME BAD <small>IMMORTAL/EPIC</small>	KORN	976	988	
13	15	21	WHAT IF <small>WIND-UP</small>	CREED	904	922	
14	16	38	HIGHER <small>WIND-UP</small>	CREED	888	883	
15	14	26	NO LEAF CLOVER <small>ELEKTRA/VEEG</small>	METALLICA	881	944	
16	10	15	STIFF UPPER LIP <small>EASTWEST/VEEG</small>	AC/DC	855	1036	
17	18	6	GODLESS <small>EPIC</small>	U.P.O.	836	775	
18	17	9	SILVER FUTURE <small>RESTLESS</small>	MONSTER MAGNET	807	810	
19	28	3	BREAKOUT <small>ROSWELL/RCA</small>	FOO FIGHTERS	665	566	
			<b>** AIRPOWER **</b>				
20	23	13	BREAK STUFF <small>FLIP/INTERSCOPE</small>	LIMP BIZKIT	661	640	

THIS WEEK	LAST WEEK	WKS. ON CHART	ACTIVE ROCK		DETECTIONS		
			TITLE/IMPRINT/PROMOTION LABEL	ARTIST	TW	LW	
			<b>*** No. 1 ***</b>				
1	1	18	KRYPTONITE <small>REPUBLIC/COLUMBIA</small>	3 DOORS DOWN	1616	1584	
2	2	4	I DISAPPEAR <small>HOLLYWOOD</small>	METALLICA	1369	1305	
3	3	6	JUDITH <small>VIRGIN</small>	A PERFECT CIRCLE	1067	971	
4	7	7	WITH ARMS WIDE OPEN <small>WIND-UP</small>	CREED	1012	894	
5	6	5	NOTHING AS IT SEEMS <small>EPIC</small>	PEARL JAM	964	950	
6	5	15	MAKE ME BAD <small>IMMORTAL/EPIC</small>	KORN	928	942	
7	8	28	PARDON ME <small>IMMORTAL/EPIC</small>	INCUBUS	864	868	
8	9	17	HOME <small>FLIP/ELEKTRA/VEEG</small>	STAIN'D	837	841	
9	12	6	SOUR GIRL <small>ATLANTIC</small>	STONE TEMPLE PILOTS	825	728	
10	4	19	OTHERSIDE <small>WARNER BROS.</small>	RED HOT CHILI PEPPERS	790	974	
11	11	13	LEADER OF MEN <small>ROADRUNNER</small>	NICKELBACK	786	795	
12	10	29	VOODOO <small>REPUBLIC/UNIVERSAL</small>	GODSMACK	759	811	
13	13	22	WHAT IF <small>WIND-UP</small>	CREED	673	700	
14	14	9	SILVER FUTURE <small>RESTLESS</small>	MONSTER MAGNET	637	640	
15	15	13	BREAK STUFF <small>FLIP/INTERSCOPE</small>	LIMP BIZKIT	629	612	
16	16	6	GODLESS <small>EPIC</small>	U.P.O.	624	587	
17	18	14	SLEEP NOW IN THE FIRE <small>EPIC</small>	RAGE AGAINST THE MACHINE	568	575	
18	20	3	AMERICAN BAD ASS <small>TOP OOG/LAVA/ATLANTIC</small>	KID ROCK	529	458	
19	21	10	NOW YOU KNOW <small>THE ENCLAVE/ISLAND/IDJMG</small>	FULL DEVIL JACKET	497	433	
20	17	26	NO LEAF CLOVER <small>ELEKTRA/VEEG</small>	METALLICA	497	565	

Compiled from a national sample of data supplied by Broadcast Data Systems. 68 modern rock, 106 mainstream rock, 14 triple-A and 52 active rock stations are electronically monitored 24 hours a day, 7 days a week. Songs ranked by number of detections. Songs showing an increase in detections over the previous week, regardless of chart movement. A song that has been on a chart for more than 20 weeks will generally not receive a bullet, even if it registers an increase in detections. Airpower awarded to songs appearing in the top 20 on both the Airplay and Audience charts for the first time with increases in both detections and audience. Greatest Gainer awarded to the song with the largest increase in detections. Most New Stations awarded to the song registering six or more detections at the most stations for the first time this week. A song with a gain in detections over the previous week is placed first if tied with a song with a decline over the same period. When tied songs are each gaining detections or each losing detections, the song being played on more stations is placed first. ©2000 Billboard/BPI Communications.



**wheel in motion**  
from their self-titled album

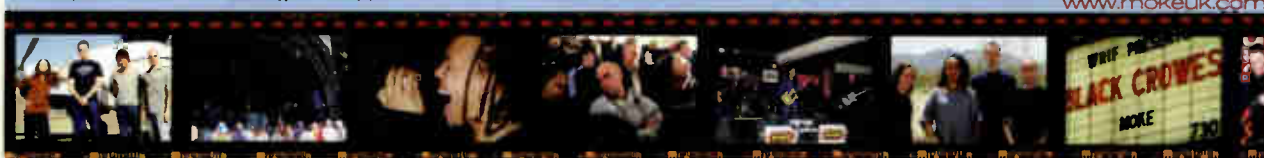
**R&R Active Rock 50\***  
**R&R Rock 49**

- |                 |                 |                 |
|-----------------|-----------------|-----------------|
| <b>KBSO 65x</b> | <b>KZRQ 29x</b> | <b>WRAT 21x</b> |
| <b>WXKE 23x</b> | <b>WCPR 22x</b> | <b>KFMF 22x</b> |
| <b>KRQR 20x</b> | <b>KDOT 19x</b> | <b>KFRQ 13x</b> |
| <b>WQLZ 14x</b> | <b>WAQX 11x</b> |                 |

**ALSO ON:**  
**WEBN KRZR WXRC KLBJ**  
**WAPL WDHA WSTZ WROQ**

"Wheel' combines a Rage Against The Machine groove with mainstream rock sensibility. Hip enough for the kids, mainstream enough to not scare off the upper demo."  
- Jave Patterson-Program Director, KDOT

**moke**  
www.mokeuk.com





# ATLANTA BURNS AGAIN

PLEASE JOIN US AS WE SKEWER A REAL GEORGIA PEACH

## LESLIE FRAM

PROGRAM DIRECTOR, WNNX (99X) ATLANTA AT  
THE 13TH ANNUAL T.J. MARTELL FOUNDATION  
MUSIC INDUSTRY ROAST

DATE: TUESDAY, JUNE 6, 2000

PLACE: IRVING PLAZA, 17 IRVING PLAZA (CORNER OF 15TH STREET)  
DOORS: 7:00 P.M. BUFFET: 7:30 P.M. ROAST: 8:30 P.M. TICKETS: \$500.

MC: BRIAN PHILIPS, SUSQUEHANNA

ROASTERS: JIMMY BARON, WNNX, SEAN DEMERY, NAN FISHER, CAPRICORN, RANDY LANE,  
RANDY LANE COMPANY, MONTE LIPMAN, UNIVERSAL, MATT POLLACK, V2, RON POORE, RCA

PLUS A PLETHORA OF SURPRISE CELEBRITIES FROM THE WORLD OF MUSIC AND ENTERTAINMENT.

CHAIRMAN: KID LEO, COLUMBIA • EXECUTIVE DIRECTOR: ALAN SMITH

JOIN THE GRAND SLAM OF LESLIE FRAM

FOR MORE INFORMATION, CALL 410-465-1980

EVENT SPONSOR:



CO-SPONSORS:

TANQUERAY  
LONDON

*Johnny Walker*

*The Italian Connection*  
RUFFINO

Sony Music Studios  
Ⓢ Ⓜ Ⓢ Ⓢ Ⓢ Ⓢ

THIS EVENT IS DEDICATED TO THE MEMORY OF MURIEL MAX

# ACDC



## SATELLITE BLUES

The new single from **Stiff Upper Lip**

**SMOKIN' OUT OF THE BOX  
AT ROCK RADIO!**

**INCLUDING:**

- |      |      |      |      |
|------|------|------|------|
| KXXR | WRIF | WEBN | WLUP |
| WLUM | WDVE | WNCX | KOMP |
| KQRC | KEZO | WXBE | WCCC |
| KATT | KRZR | KISW | KLOS |
| WHJY | WXRC | WFBQ | KSHE |
| WBYR | KLBJ | KGGO | KSJO |

**AND MANY MORE!**

PRODUCED BY GEORGE YOUNG MANAGEMENT: ALVIN HANDWERKER/PRAGER AND FENTON

 ON EASTWEST RECORDS AMERICA COMPACT DISCS AND CASSETTES [www.acdcband.com](http://www.acdcband.com) © 2000 ELEKTRA ENTERTAINMENT GROUP INC., A TIME WARNER COMPANY.