

ROCK ■ AIRPLAY Monitor

• We Listen To Radio •

January 15, 1999 \$4.95 Volume 6 • No. 3

ROCK HIGHLIGHTS

MAINSTREAM

#1

METALLICA

Turn The Page (ELEKTRA/EEG)

★ ★ ★ AIRPOWER ★ ★ ★

NO RECORDS QUALIFIED FOR AIRPOWER THIS WEEK

ON YOUR DESK

CANDLEBOX • *Happy Pills* (MAVERICK/WARNER BROS.)
FLIGHT 16 • *Fly* (550 MUSIC/ERG)
KORN • *Freak On A Leash* (IMMORTAL/EPIC)
JOHN MELLENCAMP • *I'm Not Running Anymore* (COLUMBIA)
METALLICA • *Whiskey In The Jar* (ELEKTRA/EEG)
MY FRIEND STEVE • *Charmed* (MAMMOTH)
RUSH • *Closer To The Heart (Live)* (ANTHEM/ATLANTIC)
SON VOLT • *Straightface* (WARNER BROS.)

MODERN

#1

EVERLAST

What It's Like (TOMMY BOY)

★ ★ ★ AIRPOWER ★ ★ ★

CREED • *One* (WIND-UP)

ON YOUR DESK

DOVETAIL JOINT • *Level On The Inside* (AWARE/C2)
FUN LOVIN' CRIMINALS • *Korean Bodega* (VIRGIN)
GODSMACK • *Whatever* (REPUBLIC/UNIVERSAL)
METALLICA • *Whiskey In The Jar* (ELEKTRA/EEG)
MY FRIEND STEVE • *Charmed* (MAMMOTH)
VALLEJO • *Snake In The Grass (Hurricane Mix)* (TVT)
ROB ZOMBIE • *Living Dead Girl* (GEFFEN)

TRIPLE-A

#1

GOO GOO DOLLS

Slide (WARNER BROS.)

★ ★ ★ AIRPOWER ★ ★ ★

NO RECORDS QUALIFIED FOR AIRPOWER THIS WEEK

Seeking Next Talent Wave? PDs Say, 'Grow Some Jocks Of Your Own'

by Marc Schiffman

Automation and virtual radio has made programmers fearful that there's no longer a small-market training ground for the next generation of major-market talent. Now, programmers, who listed the "talent puddle" as their top concern in a year-end Airplay Monitor survey of PDs in all formats, say the answer is already in their halls. They've shifted their focus from raiding small markets or seeking celebrity talent to strengthening in-house mentoring and internship programs and taking the time to develop new talent as soon as it walks in the door.

Triple-A WHPT Tampa, Fla., PD Chuck Beck says, "Programmers must look for the raw talent and work with them to fit our needs. We are not taking the time to develop personalities. That's part of our jobs."

Album KRXQ Sacramento, Calif., PD Curtiss Johnson adds, "I've had quite a bit of success by growing my own," citing "a few interns in the past that showed potential, great attitude, drive, and desire." Among those who came forward when Johnson programmed KUPD Phoenix was Ari-

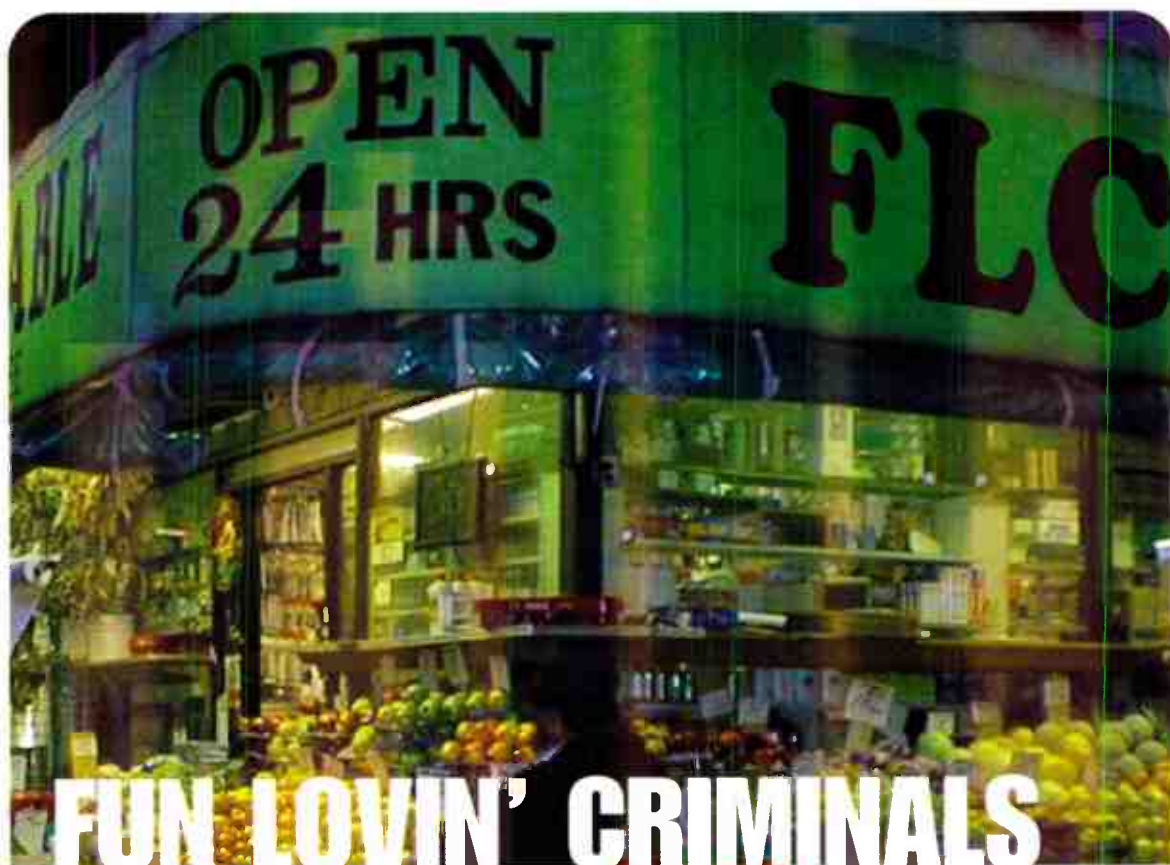
zona State University student Pete Cummings, who played drums in a local band, answered phones, and helped out during Johnson's afternoon shift in the early '90s.

"Pete would do running monologues in many different character voices in the hallways and toy with listeners when they called in. I decided to have him play DJ in the production studios on the weekends. After several months of going over the tapes with him, I eventually had him do some overnight weekend shifts. Before I left Phoenix he was the full-time overnighiter. When I left, Tim Maranville pulled him up to nights," Johnson says. "A year later, Pete Cummings was in the afternoon-drive chair."

That tradition continues in Sacramento: "I have a few positions on staff now, behind the scenes and behind the mikes, that were former interns of the station." Johnson favors interns "for entry-level positions, because you know what you're getting. You know their work ethic, how they get along with other staff members, and any quirks they may have."

A brief glance at recent issues of Rock Airplay Monitor's Radioactive

Continued on page 5



Fun Lovin' Criminals Korean Bodega

From the new album 100% Colombian

All songs written, arranged, produced and performed by Fun Lovin' Criminals

Management: Jonathan Block—Major Music

www.virginrecords.com

AOL Keyword: Virgin Records

©1999 Capitol Records, Inc.



Early Adds At:

KEDJ CFNY KLZR KRAD
WRRV WDST KZYR WTKX

Going For Adds January 18th

Album In Stores January 26th

February Tour Dates Coming Soon

Tin Star

OUT OF THE BOX ON OVER 50 STATIONS!

SHINING STARS INCLUDE:

WHFS	22x	99X	KFMZ	WEDG
WBCN	18x	89X	KHLR	WAVF
WRZX	22x	KZNX	WGBD	WARQ
KDGE	15x	WXDX	WEQX	KNRQ
KNRK	12x	WEND	KRAD	KJEE
KWOD	21x	WXDG	WEJE	WWDX
WFNX	12x	KQRX	WDST	WGMR
KKND	12x	WIXO	WGRD	WRRV
KKDM	25x	WPLA	WHMP	WBTZ
KROX	21x	KFTE	WMAD	WCYY
KLZR	11x	WKRO	WPBZ	KRZQ
WLRS	12x	WRAX	KBRB	WXSR
KTEG	18x	WENZ	WJSE	KQXR

Leslie Fram - 99X:

"HEAD is the coolest new song of '99!"

HEAD

THE DEBUT SINGLE FROM
THE FORTHCOMING ALBUM *THE THRILL KISSER*



BOYD STEEMSON, ON MANAGEMENT LONDON, UK
TEL: 0181 968 9238 BOYD@tin.star.co.uk

World Radio History

Twisted Brothers



Modern WKQX (Q101) Chicago's Twisted 5 concert featured performances from Beck, Garbage, Goo Goo Dolls, Soul Coughing, Cake, Everlast, and Third Eye Blind. MTV was there, broadcasting segments of the show and giving a Q101 listener a chance to play backstage correspondent. Shown backstage, from left, are Q101's Tim Virgin, Third Eye Blind's Stephan Jenkins, and Q101's Brian "the Whipping Boy."

A Gathering Of Garbage



Shown backstage at modern KNRK Portland, Ore.'s holiday Snowball concert in the back row, from left, are Garbage's Steve Marker, Almo Sounds' Cheryl Kovalchik, Garbage's Shirley Manson, KNRK's Buzz, and Garbage's Butch Vig and Duke Erikson. In the front row, from left, are Interscope's Tom Starr, KNRK's Patty Pastor, and KNRK mascot Snowy the Snowball.

A Holiday Candlebox



Morning host Bob Rivers was dressed to the nines to host album KISW Seattle's Twisted Christmas Party. Shown backstage, from left, are Candlebox's Dave Krusen; KISW's Spike O'Neill; Candlebox's Bardi Martin, Peter Klett, and Kevin Martin; and KISW's Rivers and Joe Bryant.

MONITOR PROFILE

As Industry Consolidates, McClusky Does Too, With Eyebrow-Raising Cumulus Deal

As radio's major groups appoint group PDs to oversee a growing number of stations, some independent promotion firms are tweaking the way they do business to secure access to the groups' decision makers, something that became clear late last year when Jeff McClusky & Associates announced an exclusivity deal with fast-growing Cumulus Media.

Coming on the heels of smaller deals by JMA and Citadel Broadcasting, Capstar's Gulfstar, and Clear Channel, the Cumulus deal caused a stir in the industry for several reasons. It gave McClusky a presence in both country and R&B radio, formats where label execs have resisted the exclusivity-pact concept, especially with outside indies. Then there are the particulars of the deal, which include having McClusky work the format consultants at Cumulus' Stratford Research arm, not individual PDs, something that struck a nerve with some promo execs who have long feared any sort of centralized music decisions by the new mega-groups.

McClusky started his firm 18 years ago, specializing in top 40 stations, then branching into

value than some guy hawking records over the phone. So we created promotion funds to give stations access to concert flyaways and things that can help their ratings.

"Obviously, we've tweaked [our operations] tremendously since then. We hired Tom Barsanti, who really understands the needs of broadcasters. We started a real broadcast promotion department, where we'd be responsible for getting plane and concert tickets and booking the hotels. We have to super-serve radio."

McClusky says he's cognizant of the industry buzz generated by the Cumulus deal, the first one where he's specifically not dealing with the PDs of individual stations. "The main thing that raised eyebrows was where we supposedly asked Cumulus PDs not to talk to the industry about music," he says. "This goes back to Cumulus' music system, which involves conference calls between PDs and the people with the final say, the group's consultants. We also have weekly meetings with the consultants; they are Cumulus' point people when it comes to music. . . . In every [business relationship], we want to deal with the decision makers, and with Cumulus, that happens to be their consultants."

Asked if that raises the specter of group adds and thus music homogenization, McClusky says, "That's something you have to ask the broadcasters. At Cumulus, there's still a lot of individual adds at the various markets. It obviously serves their best interest to have PDs in Toledo, Ohio, and Amarillo, Texas, speak up and say, 'We need to play his record,' and the consultant needs to respond to that. I don't believe the consultants have a dictatorial relationship with their PDs."

McClusky's Cumulus deal also touches on another sensitive area, the presence of outside independent promoters in both R&B and country. A proposed deal between a pop indie and Radio One's R&B reporters dissolved shortly after its announcement in fall 1996. And last year, Bill Hard's Hi-Impact Marketing announced a deal with several Atlantic Star country stations. Under pressure from the country community, some of those stations quickly renounced the deal.

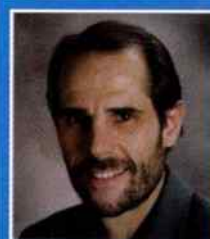
McClusky, himself, had started a Nashville branch in the early '90s. "I hired Eddie Mascolo and Bobby Young, and it took them a year to build a solid operation there," he says. "However, they left after being offered twice the money to start River North Records. I couldn't find suitable replacements, so I shut it down."

"Now we're back, working in conjunction with an established country independent, [Young-Olsen & Associates, co-helmed, ironically, by Young]. It's only a matter of time before we hire our own staff as well. Believe me, we're already getting calls from country stations."

McClusky is using the same M.O. as he launches his R&B division. Expect to hear of a tie-in with an R&B-based music company within weeks. Soon thereafter, he'll recruit an in-house promotion staff, including the hiring of someone, he says, with label senior VP of urban promotion-level experience. Although McClusky admits that he'll likely still meet some resistance in those formats, to succeed [in the new group deals] "we have to not only be involved in all formats, but in new media, concert touring, and every level of artist development."

As both radio and the music biz consolidate, McClusky wouldn't be surprised if other indies do the same. "I'd definitely be interested [in acquiring another independent] as long as it's compatible with our company," he admits. "We want to open an office in New York. Would we be interested in merging with a New York-based indie, management company, or music-related firm? Absolutely. There are some great companies out there, and we'd love to be involved with them."

JEFF SILBERMAN



Jeff McClusky
Jeff McClusky & Associates

'We want to deal with the decision makers'

album and modern rock a few years ago. JMA has 32 staffers divvied up among its offices in Chicago, Los Angeles, and Atlanta, with more hirings in the offing.

He's not the first indie to consummate group deals. Jacor and Jefferson-Pilot have engaged in similar ventures. "The real difference in the Cumulus deal is that it's the first one that covers all formats," McClusky says. "At this point in time, broadcast companies are looking for promotion and marketing partnerships, and they're more comfortable working with firms involved in all formats."

Now working with 30 Cumulus stations, eight Citadel, nine Gulfstar, and nine Clear Channel outlets, McClusky sees his deals as part of radio's changing landscape, although he notes that "we still do business with Infinity, Emis, and the others on an individual station, market-by-market basis. At the same time, we certainly hope to do more business with Capstar's other regional groups."

The group deals, McClusky says, reflect a changing atmosphere at radio. "Everybody's looking for access to PDs, so they can influence their perspective. The industry thrives on it. Broadcasters understand this and are asking themselves how best to use their access time. Even PDs in medium and small markets are running two or three different stations at once; they don't have time to talk to everyone. So the groups decide who has access. For my business, I better be able to get to the decision makers, because the labels are paying me to spread my passion for their music to the right people."

By contrast, McClusky recalls, "in the early '80s, all you needed to do was have a relationship with stations and the labels, and you could have value just by promoting music to the PDs. I've always been in the business of marketing partnerships. When we started, we first went to an FCC attorney to see if we could take a portion for our income and create a promotion fund for broadcasters. That would have more

Seeking Next Talent Wave? PDs Say, 'Grow Some Jocks Of Your Own'

Continued from page 1

column show other examples of internal success stories. Album KLBJ Austin, Texas, announced recently that P/T Arthur Dungan, who began with the station several years ago as an intern, had earned a full-time shift with the station in overnights. Modern WPLY (Y100) Philadelphia last month turned to intern Casey Boy as morning assistant when morning producer Ben Maxwell moved to overnights. Modern WPBZ West Palm Beach, Fla., night host Cindy Wallace earned a promotion to morning co-host late last summer. And modern WBTZ Burlington, Vt., recently moved production director Matt Grasso from nights to mornings.

MOST AREN'T BORN GREAT

"Talent does not just magically appear," says classic rock WING/top 40 WGTZ (Z93) Dayton, Ohio, OM Michael Luczak. "Talent is nurtured and developed. Eric Clapton didn't just wake up one day and start playing 'Tears In Heaven.' Rehearsal is a fundamental part of any show-business production. Radio guys forget this."

Luczak says PDs "must look to those 'newbies' in the building and those begging to get a job in radio to recognize, train, encourage, and rehearse new talent. Insist that the new promotion interns who really want to be on the air go into the studio for a few days a week for a couple months and really practice, then meet with the PDs for critiques along the way."

Album KEGD Dallas PD Greg Stevens says, "You have to have the opportunity to try things. Some of them are not going to work. You have to have those jobs where you make every mistake one time, and if the occurrence of people being able to have those entry-level jobs to break in to the business diminishes, then it's going to be much harder to find the people."

Stevens cites a current KEGD morning phone operator. "He has an awful lot of raw talent and has the ability to move up in this business as time goes by and he learns more. He's literally starting out in a top 10 market. He's just a naturally talented guy," says Stevens. "People who have the desire, the passion to work in the business and learn and try things and work hard, we try to let them do as much as we can . . . You can't take a person who's never seen a microphone before and throw him on in afternoon drive in this size market, but there are board-op things and production assistant things. There are still beginner-level jobs."

Saga VP of programming Steve Goldstein says his company's policy of training its talent is helping to attract new employees. "We will take the time to teach and train. That's one of things that distinguishes us" from broadcasters hoping for "instant soup" solutions, he says.

USING WHAT YOU HAVE

The increasing tendency to look inside doesn't just apply to first-jobbers but to the midlevel staffers already in place. To that end, consultant Tom Barnes believes, "programmers must resolve to aircheck their talent twice as much this year as last. Talent often gets very little feedback other than 'Keep it tight' and 'I don't get it.' We have to do better." He urges PDs to "spend more time articulating the vision for your station to your staff. The clearer the vision, the better the break."

Similarly, McVay Media VP of rock/alternative Greg Gillispie urges that critiquing tal-

ent go beyond "That break sucked." That's my commitment. When I visit my stations, I try to do airchecks with the jocks and provide good examples for them to listen to from other jocks around the country."

Luczak predicts that if each PD picked one person on staff already and mentored that person, "in a reasonable amount of time you will have developed talent right in your building."

He adds that programmers can best work with what's already on the air by ensuring a fertile work environment. "Very few corporate programmers or consultants ever suggest that the talent stretch out, entertain, or say something more than reinforcing the 'branding of our product identity, selling the listening benefits, blah blah blah,'" he says. "Let the existing talent on the air take some risks. Encourage creativity. Compliment the efforts to be unique. Even if a new talent is

copying another, so what? You mean to tell me nobody in this business ever stole an idea or sound?"

KRXQ's Johnson adds, "I've always enjoyed the mentoring process and utilize it from the top down. I'm always working toward getting my APD and

MD ready to program . . . I have few secrets from them. I encourage them to be as open with their underlings and get them ready to replace them. You would think that thought might be a little disturbing to them, but because I'm so open and nurturing with them, I run into few insecurity problems. This process leads to healthy redundancies on staff. When someone leaves, many times I won't have to look far for a replacement."

MEANWHILE, BACK AT CORPORATE

Key to being able to create an environment in which talent can be developed is working with those above you, as well as below. As talent concerns build, KEGD's Stevens says, PDs must "continue to voice that concern up the line, through corporate structures, so that the people who are in the higher-level decision-making positions will at least keep in mind that the new talent is going to have to come from somewhere."

Consultant Barnes says, "Every big broadcaster should have a corporate position for talent development . . . someone in the corporate office who knows every good air talent and agent in the country. They should also help PDs aircheck and manage the creative personality better."

McVay's Gillispie goes a step further, advocating that the bigger companies take on the responsibility of training and educating their talent themselves. He

points to a friend in the computer business who is dispatched to Atlanta several times a year for updated training. "The companies are large enough now that they can institute that" for not just air talent, but also management and sales, Gillispie says. "A lot of it really boils down to how interested in developing new talent are broadcasters today? We certainly can't run with what we've got forever."

Luczak believes that if groups would take some pressure off today's multi-tasking PD, "they might have time to work with their talent." He'd also like corporate to "improve the pay scale. Most entry-level positions today are in the same pay league as fast-food restaurants. Reward the talent that is doing a good job for you financially," he says. "Maybe the word will get around that radio can be fun and pay OK."

'[Hiring interns means] you know what you're getting. You know their work ethic, how they get along with other staff members'

'Every big broadcaster should have a corporate position for talent development.'

CHEET SHEET BY MARK MARONE
212-536-5051 • mmarone@airplaymonitor.com

Marvelous 3 Push Power Pop Button

Singer/guitarist **Butch Walker** of Atlanta-based power-pop trio **Marvelous 3** believes it was high school life in the Atlanta suburbs that allowed him and his bandmates to persevere through more than 10 years of ups and downs together. "You had a choice at my high school," he recalls. "You could either shoot deer for a life, play football and hopefully get a scholarship to some offshoot college, or do what I did. Which was to have two-tone hair, eight earrings, and two different color shoes on. I was the only guy in my school doing that."



Marvelous 3: Slug, Butch, Jayce

The friends immediately headed west after graduation and took up residence on L.A.'s Hollywood Boulevard. Their current name is only their latest, reflecting the new trio size of the band, and marks a stylistic change for Walker. The shorter, more playful power-pop songs he now writes require a different sensibility than the songwriter had previously explored as an indie stalwart. As Walker says, "For years, I couldn't write a song with the word 'love' in it."

The power-pop era of the **Knack**, the **Romantics** and the **Greg Kihn Band** looms large for Walker. "Those are my memories. That was it; that was my puberty. It was nothing but MTV 24

hours a day; it was the best it ever was, and that's when I consumed it 24/7. Sure, that could have been a bad thing, but it opened my eyes up and scarred me for life in a good way on rock that was cheeky, fun, that had an attitude, was fun lyrically to listen to, and was visual."

Equally influential in his musical upbringing was when "I was 8 years old, and my parents made the mistake of taking me to see **Kiss**, at the height of their makeup, fire, and flames career. I was a huge fan—ate, breathed, shit, and lived **Kiss**," he says. "[At the time,] it was the only thing kids could have fun doing. We didn't have Playstation; we had Paul Stanley."

Walker says he's received hundreds of E-mails from young kids praising his group's power pop as the perfect antidote to the abundance of aggro/grunge/ska-punk rock, which encourages and amuses him. "It's so funny; they think what I'm doing is new," he says.

As for those who suggest the verses of "Freak Of The Week" sound awfully close to **Roger McGuinn's** "So You Want To Be A Rock 'N' Roll Star," Walker replies, "I think no matter what you do musically, especially in the pop world, it's all been done before. There's nothing you can't do that hasn't already been done in some sort of variation." Reluctant to open a can of worms on the subject but searching for an illustration, he thinks of another contemporary hit. "I can take 'Push' by **matchbox 20**, and when I hear 'I will, I will, I will,' I think of **Captain & Tennille** ["Love Will Keep Us Together"]. Maybe that's the beauty of writing a hit song."

RADIO CONCERT MONITOR

DATE	CALL LETTERS	EVENT	SCHEDULED TO APPEAR
Jan. 21	KLYY Los Angeles	Y107 Winter Recital	Devo, Violent Femmes, Ween
Feb. 5	WNNX (99X) Atlanta	99X Chinese New Year 1999	Remy Zero, Semisonic
Feb. 6	WNNX (99X) Atlanta	99X Chinese New Year 1999	Collective Soul, Lenny Kravitz, more
Feb. 28	WBTZ Burlington, Vt.	Freaks of Nature	TBA
April 25	KROX Austin, Texas	Big Show	TBA
June 5	KRXQ Sacramento, Calif.	Third Jambo-Freakin'-Ree	TBA (tentative date)

To include your station's concert information in *Rock Concert Monitor*, call Marc Schiffman at 212-536-5065, fax 212-536-5286, or E-mail mschiffman@airplaymonitor.com

Editor: Sean Ross
Managing Editor: Marc Schiffman
Chart Administrator: Silvio Pietrolungo
Mainstream Rock/Triple-A Chart Manager: Anthony Colombo
Modern Rock Chart Manager: Mark Marone
Associate Director of Charts: Steven Graybow
Writer/Reporter: Frank Saxe
Chart Production Manager: Michael Cusson
Assistant Chart Production Manager: Gordon Murray
Editorial Production Managers: Barry Bishin, Marcia Repinski
Editorial Production: Susan Chicola, Marc Giaquinto, Juliana Koo, Maria Manilicic, Sandra Watanabe
Copy Editor: Carl Rosen
Advertising Production Manager: Lydia Mikulko
Advertising Production Coordinator: Paul Page
Art Director: Ray Carlson
Advertising Production Artist: Karen Platt

National Advertising Manager: Hank Spann
Account Managers: Jeff Somerstein, Sharon White
Advertising Services Manager: Alyse Zigman
Sales Assistants: Evelyn Aszodi, Erica Bengtson, Jason Rashford

Editorial Adviser: Timothy White
Director of Production & Manufacturing: Marie Gombert
Circulation Director: Jeanne Jamin
Marketing Manager: Rob Accatino

Publisher: Jon Guynn

Billboard Music Group

President: Howard Lander
Senior VP/General Counsel: Georgina Challis
Vice Presidents: Irwin Kornfeld, Karen Dertley, Adam White
Director of Strategic Development: Ken Schlager
Business Manager: Joellen Sommer

1515 Broadway, New York, NY 10036 212-764-7300
5055 Wilshire Blvd., 7th floor, Los Angeles, CA 90036 213-525-2300
For subscriptions call: 800-745-8922

©1999 BPI Communications Inc. No part of this publication may be reproduced, stored in any retrieval system, or transmitted, in any form or by any means, electronic, mechanical, photocopying, recording, or otherwise, without the prior written permission of the publisher.

Strongest Increase In Airplay This Week

MAINSTREAM ROCK

INCREASE
IN PLAYS

COLLECTIVE SOUL • Heavy (ATLANTIC)	+518
WSTZ +24, WXRA +20, WTUE +19, KMBY +17, WKQQ +17, KAZR +15, WNOR +15, WIYY +15, WZTA +14, KICT +14	
METALLICA • Whiskey In The Jar (ELEKTRA/EEG)	+261
KXXR +20, KEGL +16, KUFO +14, WTKX +13, KRZR +13, KRAB +12, KUPD +11, WMFS +10, KCAL +10, WFBQ +10	
CREED • One (WIND-UP)	+195
KCAL +21, KRAB +17, KISW +16, WYSP +13, KOMP +13, WBAB +11, WRQC +10, WCKW +8, KDKB +8, WAAF +8	
EVERLAST • What It's Like (TOMMY BOY)	+178
KHTQ +19, KISW +11, KUPD +10, KBPI +10, WBUZ +9, KTAL +9, WONE +9, WJRR +8, WTPA +8, KISS +8	
BLACK SABBATH • Selling My Soul (EPIC)	+159
KCAL +31, KUPD +14, WNCX +13, KOMP +11, KNJY +10, KILO +10, KISW +9, WRDU +8, KRXQ +8, KLBJ +7	
ROB ZOMBIE • Living Dead Girl (Geffen)	+131
KRAB +18, WXTM +15, KISW +14, KNJY +9, WRQC +9, WTPA +8, KRZR +8, WIYY +6, WBUZ +5, WMFS +5	
EVE 6 • Leech (RCA)	+127
KHTQ +16, KPOI +10, KEZO +10, WJRR +9, WTPA +9, WWDC +9, WPTT +7, WMFS +6, WBZX +6, WZZO +5	
BARE JR. • You Blew Me Off (IMMORTAL/EPIC)	+114
KHTQ +19, WTKX +10, WMMR +9, WNCX +8, WQXA +8, KCAL +8, KRXQ +8, WEZX +7, WTPA +7, KXXR +6	
GODSMACK • Whatever (REPUBLIC/UNIVERSAL)	+104
WZMT +10, KRXQ +10, KHTQ +9, WXTM +9, WXRA +6, WCCC +6, KISW +6, KUFO +5, WROV +5, WXRC +5	
MARILYN MANSON • I Don't Like The Drugs (But The Drugs Like Me) (NOTHING/INTERSCOPE)	+96
WTKX +10, WXRC +10, WMFS +8, KRXQ +8, WRQC +6, KIOZ +6, WCCC +6, KNJY +5, WPTT +5, WBUZ +4	

MODERN ROCK

INCREASE
IN PLAYS

COLLECTIVE SOUL • Heavy (ATLANTIC)	+421
WXDX +27, WMRQ +27, KITS +26, WXNR +22, KPNT +22, KXRK +20, WXZZ +18, WKRO +16, KFTE +16, KDGE +16	
EVERCLEAR • One Hit Wonder (CAPITOL)	+279
WBTZ +19, KKND +18, WGRD +18, KLZR +16, WBRU +15, WRAX +14, KRAD +14, KPNT +14, WPLA +13, WKRO +12	
MARVELOUS 3 • Freak Of The Week (HIFI/ELEKTRA/EEG)	+173
WBCN +18, WGRD +17, WHFS +16, KCXX +15, WQBK +12, WKRL +11, KDRE +10, KDGE +9, WEQX +9, KTCL +8	
CREED • One (WIND-UP)	+161
WXZZ +23, WBCN +17, WXNR +14, KCXX +14, KXRK +14, KXTE +11, KFMA +11, WPLA +10, KKND +8, KJEE +7	
THE LIVING END • Prisoner Of Society (REPRISE)	+158
WBTZ +17, WENZ +14, KDRE +10, WXRK +10, KKND +9, WXZZ +9, WXDX +9, KWOD +9, WLRS +9, CFNY +8	
SUGAR RAY • Every Morning (LAVA/ATLANTIC)	+158
WBCN +18, WPLA +17, WPBZ +16, KTOZ +14, WXNR +11, WRXR +11, KMYZ +11, WEND +9, KZNY +8, WARQ +7	
EVE 6 • Leech (RCA)	+155
KNDD +20, WXZZ +17, KMYZ +15, WBCN +13, XTRA +12, KDGE +11, WEDG +11, WARQ +10, WPBZ +9, WBTZ +7	
HOLE • Malibu (DGC/GEFFEN)	+155
WKRO +15, WBCN +15, WXDG +11, WAVF +11, WKDF +11, WXNR +10, KROX +10, WPBZ +10, WEND +10, WPLA +9	
ORGY • Blue Monday (ELEMENTREE/REPRISE)	+144
WXZZ +17, WPBZ +13, WBCN +13, KROX +9, WEDG +9, KKND +8, KXPK +8, KROQ +8, WHFS +7, KFTE +6	
FATBOY SLIM • Praise You (SKINT/ASTRALWERKS)	+136
WPLA +17, WBCN +16, WBRU +13, KTCL +12, CFNY +10, KNDD +10, KDGE +8, KWOD +7, WNNX +7, WKRL +6	

VIDEO PLAYLISTS

MOST PLAYED ROCK TRACKS



	TW	LW
1 Sheryl Crow, My Favorite Mistake	16	9
2 Jewel, Hands	16	8
3 Eagle-Eye Cherry, Save Tonight	15	9
4 Goo Goo Dolls, Iris	11	9
5 Shawn Mullins, Lullaby	11	9
6 Sarah McLachlan, Angel	10	3
7 Green Day, Time Of Your Life	10	2
8 Brian Setzer Orchestra, Jump Jive An' Wail	10	4
9 Alanis Morissette, Thank U	10	6
10 Sugar Ray, Every Morning	10	5
11 Third Eye Blind, Jumper	9	5
12 Fastball, The Way	9	5
13 Barenaked Ladies, It's All Been Done	9	7
14 Rolling Stones, Gimme Shelter	9	2
15 Lenny Kravitz, Fly Away	8	6
16 Goo Goo Dolls, Slide	8	5
17 Hootie & The Blowfish, Only Lonely	8	6
18 R.E.M., Lotus	8	5
19 Semisonic, Closing Time	7	4
20 Barenaked Ladies, One Week	7	3
21 Smash Mouth, Walkin' On The Sun	6	4
22 Fastball, Fire Escape	6	1
23 U2, Sweetest Thing	6	4
24 Aerosmith, I Don't Want To Miss A Thing	6	2
25 Third Eye Blind, Semi-Charmed Life	6	3
26 Natalie Imbruglia, Torn	6	1
27 Sugar Ray, Fly	5	4
28 Matchbox 20, Real World	5	1
29 Matchbox 20, 3 AM	5	2
30 Natalie Imbruglia, Smoke	4	1



	TW	LW
1 The Offspring, Pretty Fly For A White Guy	30	12
2 Beastie Boys, Body Movin'	28	11
3 Limp Bizkit, Faith	27	11
4 Green Day, Nice Guys Finish Last	27	11
5 Jewel, Hands	25	12
6 New Radicals, You Get What You Give	18	6
7 Lenny Kravitz, Fly Away	17	11
8 Everlast, What It's Like	17	9
9 Hole, Malibu	17	2
10 Collective Soul, Run	17	9
11 Third Eye Blind, Jumper	16	3
12 Barenaked Ladies, It's All Been Done	15	5
13 Natalie Imbruglia, Smoke	13	7
14 Metallica, Turn The Page	13	5
15 Class Of '99, Another Brick In The Wall	12	6
16 Marilyn Manson, I Don't Like The Drugs	12	5
17 Sugar Ray, Every Morning	10	4
18 Korn, Got The Life	10	1
19 Everclear, Father Of Mine	9	2
20 The Flys, Got You	9	3
21 Cake, Never There	9	2
22 Alanis Morissette, Uninvited	8	4
23 Brian Setzer Orchestra, Jump Jive An' Wail	7	4
24 Goo Goo Dolls, Slide	7	3
25 Dave Matthews Band, Crush	6	3
26 U2, Sweetest Thing	6	2
27 Aerosmith, I Don't Want To Miss A Thing	5	0
28 Barenaked Ladies, One Week	4	1
29 Soul Coughing, Circles	4	0
30 Beastie Boys, Intergalactic	4	0
31 Orgy, Blue Monday	4	0
32 Goo Goo Dolls, Iris	3	2
33 Kid Rock, I Am The Bullgod	3	0
34 Eagle-Eye Cherry, Save Tonight	2	1
35 Rob Zombie, Living Dead Girl	2	1
36 Red Hot Chili Peppers, Under The Bridge	2	0
37 Matchbox 20, Real World	2	1
38 Green Day, Time Of Your Life	2	2
39 Fastball, The Way	2	1
40 Harvey Danger, Flaggpole Sitta	2	2

TRIPLE-A

INCREASE
IN PLAYS

R.E.M. • Lotus (WARNER BROS.)	+44
WDOD +22, WBOS +7, KFQG +7, KTCZ +4, CIDR +2, KMTT +2, WRLT +1, KBCO +1, WXRT +1	
SUGAR RAY • Every Morning (LAVA/ATLANTIC)	+32
WDOD +9, WXRT +9, WHPT +7, WRLT +6, WBOS +3, KACD +1, KTCZ +1	
GARBAGE • Special (ALMO SOUNDS/INTERSCOPE)	+27
WDOD +16, WBOS +5, WRLT +3, WXRT +2, KINK +1, WNCX +1	
SARAH MCLACHLAN • Angel (WARNER SUNSET/REPRISE)	+24
CIDR +10, WHPT +9, WVRV +8, KINK +2, WBOS +1, KTCZ +1	
R.L. BURNSIDE • It's Bad You Know (FAT POSSUM/EPITAPH)	+19
KGSR +6, WNCX +4, WXRV +4, KMTT +2, WXRT +2, KXL +1, KINK +1, KBCO +1	
JOHN MELLENCAMP • I'm Not Running Anymore (COLUMBIA)	+19
KTCZ +12, KFQG +7, KPIG +2, WXRV +1	
SHERYL CROW • There Goes The Neighborhood (A&M)	+18
WDOD +9, CIDR +7, WBOS +5, WTTT +3, KGSR +3, WRLT +2, KMTT +2, WNCX +2, KBCO +2, WKOC +1	
DC TALK • My Friend (So Long) (FOREFRONT/VIRGIN)	+18
WKOC +20	
SHAWN MULLINS • Shimmer (SMG/COLUMBIA)	+16
KTCZ +13, KKZN +2, KINK +2, WBOS +2, WXRT +2	
SEMISONIC • Secret Smile (MCA)	+16
WHPT +8, KTCZ +8, WBOS +4, CIDR +1	

When you want to hit your target audience... take aim with Airplay Monitor.

- 79% of Monitor Radio readers use or plan to use Syndicated or Network Programming.
- 78% of Monitor Radio readers use or plan to use Research Companies.
- 72% of Monitor Radio readers use or plan to use Show Prep Services.
- 52% of Monitor Radio readers use or plan to use Consultants.

Your target is here... you just need to aim.

ROCK AIRPLAY Monitor
• We Listen To Radio •

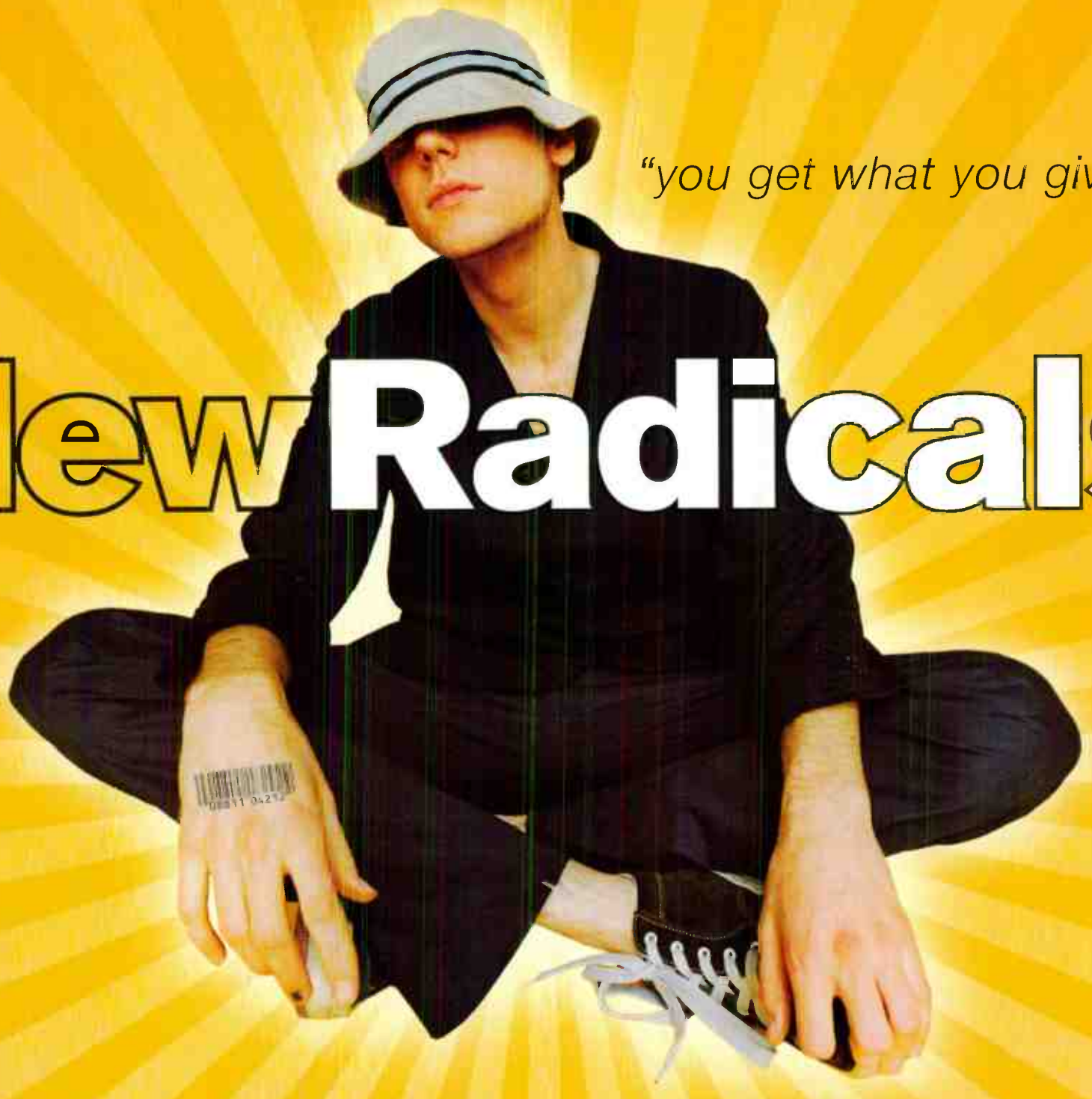
**Check Your Local SoundScan
Sales Exploding Everywhere!**

KROQ
KLYY
WPLY
CIMX
WPLT
WHFS
WWDC
KTBZ
WFX
WNNX
XTRA
KZNZ
KPNT
WXDX
KZON
KEDJ

"you get what you give"

New Radicals

WENZ
KTCL
KLZR
KWOD
WBRU
KXRK
KENZ
WEND
WEDG
WMRQ
WRXQ
WKDF
WXEG
WPLA
KROX
WEQX
KMYZ
KFMA
WZAZ
WAVF
WRAX
WJBX
WBAB
KRAB
KLPX



BuzzWorthy



8 Modern Rock Monitor



Produced & Arranged by Gregg Alexander • Management: Steve Jensen and Martin Kirkup/Direct Management Group, Inc. • www.mcarecords.com • newradicals.com • 1998 mca records, inc.

WNEW New York OM: Garry Wall MD: Andrea Karr 212-489-1027 CBS

KLOS Los Angeles PD: Rita Wilde 310-840-4800 ABC/Disney KLOS 95.5

WYSP Philadelphia OM: Tim Sabean APD/MD: Reed Enderste 215-625-9460 CBS

KQRS Minneapolis PD: Dave Hamilton APD/MD: Ken Zepeto 612-545-5601 ABC/Disney 92 KQRS

WMMR Philadelphia PD: Joe Bonadonna MD: Ken Zepeto 610-771-0933 Greater Media WMMR 95.5

WWDC Washington, DC PD: Bob Neumann APD/MD: Buddy Rizer 301-578-7100 Chancellor DC 101

Table with 2 columns: Rank and Song/Artist. Top songs include 'The Black Crowes, Kickin' My Heart Around' and 'Lenny Kravitz, Fly Away'.

Table with 2 columns: Rank and Song/Artist. Top songs include 'Brian Setzer Orchestra, This Cat's On A' and 'Jonny Lang, Still Ramin'.

Table with 2 columns: Rank and Song/Artist. Top songs include 'Lenny Kravitz, Fly Away' and 'Rob Zombie, Dragula'.

Table with 2 columns: Rank and Song/Artist. Top songs include 'R.E.M., Lotus' and 'Jonny Lang, Still Ramin'.

Table with 2 columns: Rank and Song/Artist. Top songs include 'U2, Sweetest Thing' and 'Brother Kane, Machete'.

Table with 2 columns: Rank and Song/Artist. Top songs include 'Goo Goo Dolls, Slide' and 'Everlast, What It's Like'.

WRIF Detroit OM: Doug Podell MD: Troy Hanson 248-547-0101 Greater Media 101 WRIF

WKLS Atlanta PD: Pat Ervin MD: Lisa Sturgis 404-325-0960 Jacor 96.1 rock

WDVE Pittsburgh PD: Garrett Hart MD: Val Porter 412-937-1441 Chancellor 44.1 rock

WAAF Boston PD: Dave Douglas APD: Ron Valeri MD: John Osterling 617-236-1073 Entercom WAAF 107.3 FM

WFBQ Indianapolis OM: Marty Bender MD: Ace Cosby 317-257-7565 Capstar 77.1 Rock/roll

KLOL Houston Dir Of Ops: Michael Hughes APD/MD: Max Dugan 713-526-6855 Chancellor rock101

Table with 2 columns: Rank and Song/Artist. Top songs include 'Lenny Kravitz, Fly Away' and 'Creed, What's This Life For'.

Table with 2 columns: Rank and Song/Artist. Top songs include 'Lenny Kravitz, Fly Away' and 'Goo Goo Dolls, Slide'.

Table with 2 columns: Rank and Song/Artist. Top songs include 'Lenny Kravitz, Fly Away' and 'Jonny Lang, Still Ramin'.

Table with 2 columns: Rank and Song/Artist. Top songs include 'Everlast, What's This Life For' and 'Korn, Got The Life'.

Table with 2 columns: Rank and Song/Artist. Top songs include 'Goo Goo Dolls, Slide' and 'The Black Crowes, Kickin' My Heart Around'.

Table with 2 columns: Rank and Song/Artist. Top songs include 'Jonny Lang, Still Ramin' and 'Creed, What's This Life For'.

KEGL Dallas Dir/Pgm/Ops: Jimmy Steal PD: Greg Stevens MD: Cindy Scull 972-869-9700 Jacor 97.1 The Eagle Rocks

WNCX Cleveland PD: Bill Louis MD: David Jockers 216-861-0100 Clear Channel 98.5 WNCX Cleveland's Classic Rock

WZTA Miami VP/Pgm: Gregg Steele MD: Kimba 305-654-9494 Clear Channel 92.9 The Rock Station

WKRK Detroit PD: Mike Stern MD: Erin Carman 482-423-3300 CBS 97.1 K 107.1

KSHE St. Louis PD: Rick Balis MD: Al Hofer 314-621-0095 Emmis KSHE 95

WMMS Cleveland PD: Greg Ausham APD: 'Spaceman' Scott Hughes 216-781-9667 Jacor 100.5 FM

Table with 2 columns: Rank and Song/Artist. Top songs include 'Rob Zombie, Dragula' and 'Creed, What's This Life For'.

Table with 2 columns: Rank and Song/Artist. Top songs include 'Aerosmith, What It Takes' and 'Bruce Springsteen, Rendezvous'.

Table with 2 columns: Rank and Song/Artist. Top songs include 'The Offspring, Pretty Fly (For A White Guy)' and 'Goo Goo Dolls, Slide'.

Table with 2 columns: Rank and Song/Artist. Top songs include 'Hole, Celebrity Skin' and 'The Offspring, Pretty Fly (For A White Guy)'.

Table with 2 columns: Rank and Song/Artist. Top songs include 'Jonny Lang, Still Ramin' and 'Goo Goo Dolls, Slide'.

Table with 2 columns: Rank and Song/Artist. Top songs include 'Jonny Lang, Still Ramin' and 'Lenny Kravitz, Fly Away'.

WEBN Cincinnati OM: Scott Reinhardt PD: Michael Walter 513-621-9326 Jacor WEBN

KBPI Denver PD: Bob Richards MD: Willie B. 303-893-3699 Jacor BPI 103.7

WXTB Tampa OM: Brad Hinda APD: Carl Harris 813-572-9808 Jacor 98.9

WIYY Baltimore PD: Rick Strauss APD/MD: Rob Heckman 410-889-0098 Heart Broadcasting 93.7 Rock

KXXR Minneapolis PD: Wade Lind APD/MD: Josh Bitney 612-545-5601 ABC/Disney 93.7 Pure Rock

KISW Seattle SM/PP: Clark Ryan APD/MD: Cathy Faulkner 206-285-7625 Entercom 99.9 FM

Table with 2 columns: Rank and Song/Artist. Top songs include 'Lenny Kravitz, Fly Away' and 'Creed, What's This Life For'.

Table with 2 columns: Rank and Song/Artist. Top songs include 'Metallica, Turn The Page' and 'Creed, One'.

Table with 2 columns: Rank and Song/Artist. Top songs include 'Everlast, What It's Like' and 'Rob Zombie, Dragula'.

Table with 2 columns: Rank and Song/Artist. Top songs include 'Hole, Celebrity Skin' and 'Creed, One'.

Table with 2 columns: Rank and Song/Artist. Top songs include 'Rob Zombie, Dragula' and 'Creed, One'.

Table with 2 columns: Rank and Song/Artist. Top songs include 'Metallica, Turn The Page' and 'Creed, One'.

AIRPLAY **Monitor** **ROCK 100.3** **MAINSTREAM ROCK**

POWER PLAYLIST

FOR WEEK ENDING JANUARY 10, 1999

WRQC Minneapolis
OM: Andy Bloom
PD: Lauren MacLeash
APD/MD: Jay Philpott
612-333-8118
Chancellor

Table with 2 columns: Rank and Song/Artist. Top songs include Rob Zombie, Kiss, Megadeth, Metallica, Lenny Kravitz, etc.

KSJO San Jose
PD: Jim Richards
MD: Laurie Free
408-453-5400
Jacor

Table with 2 columns: Rank and Song/Artist. Top songs include Metallica, Lenny Kravitz, Everlast, Creed, etc.

WBZX Columbus, OH
PD: Hal Fish
APD/MD: Ronni Hunter
614-481-7800
North America

Table with 2 columns: Rank and Song/Artist. Top songs include Black Sabbath, The Offspring, Everlast, Rob Zombie, etc.

KQRC Kansas City
PD: Vince Richards
MD: Valerie Knight
913-514-3000
Sinclair

Table with 2 columns: Rank and Song/Artist. Top songs include Metallica, Lenny Kravitz, Everlast, Rob Zombie, etc.

WXTM St. Louis
PD: Tommy Mattem
APD: Rob Walker
314-621-0400
Emmis

Table with 2 columns: Rank and Song/Artist. Top songs include Tool, Everlast, Rage Against the Machine, Lenny Kravitz, etc.

WHY Providence
PD: Joe Bevilacqua
MD: Sharon Schifino
401-438-6110
Capstar

Table with 2 columns: Rank and Song/Artist. Top songs include Lenny Kravitz, Everlast, Rob Zombie, etc.

WBAB Long Island
VP Pgm: Bob Buchman
OM: Eric Wellman
516-587-1023
Cox

Table with 2 columns: Rank and Song/Artist. Top songs include Eagle Eye Cherry, Goo Goo Dolls, Alanis Morissette, etc.

WLZR Milwaukee
PD: Keith Hastings
MD: Marilyn Mee
414-454-0900
Saga Communications

Table with 2 columns: Rank and Song/Artist. Top songs include Metallica, Lenny Kravitz, Everlast, Rob Zombie, etc.

WONE Akron
PD: J.D.
APD: Tim Daugherty
330-869-9800
Tom Mandell

Table with 2 columns: Rank and Song/Artist. Top songs include Goo Goo Dolls, Metallica, Lenny Kravitz, etc.

KISS San Antonio
OM: Virgil Thompson
PD: Kevin Vargas
MD: C.J. Cruz
210-646-0105
Cox

Table with 2 columns: Rank and Song/Artist. Top songs include The Offspring, Stabbing Westward, Lenny Kravitz, etc.

WRDU Raleigh
PD: Bob Edwards
MD: Mark Arsen
919-876-1061
Capstar

Table with 2 columns: Rank and Song/Artist. Top songs include Metallica, Train, Kiss, etc.

KUFO Portland
OM: Dave Numme
APD: Al Scott
503-22-9700
CBS

Table with 2 columns: Rank and Song/Artist. Top songs include Rob Zombie, The Offspring, Creed, etc.

WCCC Hartford
PD: Michael Piccozzi
APD/MD: Mike Karolyi
860-233-4426
Marlin Broadcasting

Table with 2 columns: Rank and Song/Artist. Top songs include Black Sabbath, Metallica, Godsmack, etc.

WJRR Orlando
PD: Dick Sheetz
MD: Pat Lynch
407-916-7790
Clear Channel

Table with 2 columns: Rank and Song/Artist. Top songs include Creed, Fuel, Everlast, etc.

KUPD Phoenix
OM: Tim Maranville
PD: J.J. Jeffries
602-345-5921
Sandusky

Table with 2 columns: Rank and Song/Artist. Top songs include Metallica, Creed, Stabbing Westward, etc.

KIOZ San Diego
PD: Tim Dukas
APD/MD: Shannon Leder
619-565-6006
Jacor

Table with 2 columns: Rank and Song/Artist. Top songs include Everlast, Metallica, Lenny Kravitz, etc.

KATT Oklahoma City
PD: Chris Baker
MD: Jake Daniels
405-848-0100
Caribou Communications

Table with 2 columns: Rank and Song/Artist. Top songs include Metallica, Lenny Kravitz, Everlast, etc.

KRXQ Sacramento
SM: Curtiss Johnson
APD: Pat Martin
MD: Kyle Brooks
916-334-7777
Entercom

Table with 2 columns: Rank and Song/Artist. Top songs include Everlast, Monster Magnet, Rob Zombie, etc.

WROQ Greenville, S.C.
PD: Ken Carson
APD/MD: K.C. Carson
864-242-0101
Capstar

Table with 2 columns: Rank and Song/Artist. Top songs include Jonny Lang, Lenny Kravitz, Rob Zombie, etc.

WXQA Harrisburg
PD: Claudine DeLorsanzo
MD: Nixon
717-367-7700
Citadel

Table with 2 columns: Rank and Song/Artist. Top songs include Everlast, The Flies, Rob Zombie, etc.

KYYS Kansas City
PD: Greg Bergen
MD: Slacker
913-677-8998
Entercom

Table with 2 columns: Rank and Song/Artist. Top songs include Jonny Lang, The Flies, Rob Zombie, etc.

WIMX Knoxville
PD: Jim Pemberton
MD: Bill Kidd
423-525-6000
South Central

Table with 2 columns: Rank and Song/Artist. Top songs include The Black Crowes, Rolling Stones, Lenny Kravitz, etc.

WCKW New Orleans
PD: Ted Edwards
504-831-8811
222 Corporation

Table with 2 columns: Rank and Song/Artist. Top songs include Goo Goo Dolls, The Black Crowes, Lenny Kravitz, etc.

WLVC Columbus
PD: Charley Lake
APD/MD: Joe Show
614-227-9696
CBS

Table with 2 columns: Rank and Song/Artist. Top songs include The Flies, Lenny Kravitz, Everlast, etc.

Upward-moving songs ranked in order of spin count. Songs are removed if they lose more than 5% of their detections from previous week or if their spin count declines for two consecutive weeks.

MOST NEW STATIONS

Songs detecting six or more spins at new stations this week

	NEW STATIONS
COLLECTIVE SOUL <i>Heavy (Atlantic)</i>	38
METALLICA <i>Whiskey In The Jar (Elektra/EEG)</i>	18
BARE JR. <i>You Blew Me Off (Immortal/Epic)</i>	10
BLACK SABBATH <i>Selling My Soul (Epic)</i>	9
ROB ZOMBIE <i>Living Dead Girl (Geffen)</i>	8



NO RECORDS QUALIFIED FOR AIRPOWER THIS WEEK

AIRPOWER BOUND

Total Plays/Gain

COLLECTIVE SOUL 768/518

Heavy (Atlantic)

Total Stations: 62/Chart Move: Debut 20
Heavy (21+ plays): 7 KAZR, KCAL, KISS, KNJY, KRPX, WAAF, WBUZ, WJRR, WLZR, WXTM
Medium (14-20): 18 KEZO, KICT, KILO, KISW, KLPX, KMOD, KQRC, WBUZ, WCKW, WIXV, WIYY, WKQQ, WLZR, WNOR, WONE, WTUE, WXRA, WZTA
Light (Under 14): 37
New Airplay This Week: 38 KBER, KEZO, KHTQ, KICT, KIOZ, KISS, KISW, KLAQ, KLB, KLPX, KMBY, KOMP, KRPX, KRZZ, KTUX, WAQX, WBAB, WBLM, WDVE, WEBN, WIYY, WJRR, WKLC, WKQQ, WMFS, WNCD, WNEW, WNOR, WQXA, WRQQ, WSTZ, WTPA, WTUE, WVRK, WAFX, WXRA, WXTB, WZTA

MONSTER MAGNET 721/48

Powertrip (A&M)

Total Stations: 52/Chart Move: 20-21
Heavy (21+): 10 KAZR, KCAL, KISS, KNJY, KRPX, WAAF, WBUZ, WJRR, WLZR, WXTM
Medium (14-20): 12 KIOZ, KLB, KRZR, KUPD, WCCC, WKLO, WKRC, WMFS, WNOR, WQXA, WXTB, WYSP
Light (Under 14): 39
New Airplay This Week: 4 KQRC, WNCD, WTKX, WXRC

ECONOLINE CRUSH 701/40

Surefire (Never Enough) (Restless)

Total Stations: 57/Chart Move: 21-22
Heavy (21+): 7 KAZR, KHTQ, KISS, KNJY, WJRR, WXTM, WZTA
Medium (14-20): 16 KBPI, KICT, KLB, KNCN, KRPX, KUPD, KXXR, WBUZ, WCCC, WKLO, WLZR, WMFS, WRQC, WTFX, WTPT, WXRA
Light (Under 14): 34

EVE 6 683/127

Leech (RCA)

Total Stations: 54/Chart Move: 25-23
Heavy (21+): 8 KHTQ, KICT, KNJY, KPOI, WAAF, WJRR, WTPT, WZTA
Medium (14-20): 14 KILO, KLAQ, KLB, KRZR, KTUX, WBZ, WEBN, WKLO, WNOR, WTPA, WXRA, WXRC, WXTM, WZZO
Light (Under 14): 32
New Airplay This Week: 2 KEZO, WWDC

KISS 624/40

You Wanted The Best (Mercury)

Total Stations: 57/Chart Move: 22-24
Heavy (21+): 6 KHTQ, KNJY, WAPL, WDHA, WMFS, WZZR
Medium (14-20): 9 KEZO, KLPX, KMBY, KNCN, KXUS, KXXR, KZRR, WBUZ, WRIF
Light (Under 14): 42

SPRUNG MONKEY 601/83

Super Breakdown (Surfdog/Hollywood)

Total Stations: 61/Chart Move: 28-25
Heavy (21+): 5 KHTQ, KRZR, WJRR, WMFS, WNOR
Medium (14-20): 10 KIOZ, KNCN, KRPX, KUPD, WAPL, WCCC, WTPT, WXRA, WXRC, WXTM
Light (Under 14): 46
New Airplay This Week: 1 WBUZ

INDIGENOUS 506/39

Now That You're Gone (Pachyderm)

Total Stations: 44/Chart Move: 28-27
Heavy (21+): 3 KDKB, KLPX, WDHA
Medium (14-20): 10 KEZO, KLB, KMBY, KXUS, WAQX, WCMF, WDVE, WFBQ, WIZN, WZZO
Light (Under 14): 31
New Airplay This Week: 4 KOMP, WEZX, WFBQ, WNEW

REMY ZERO 483/38

Prophecy (DGC/Geffen)

Total Stations: 49/Chart Move: 30-29
Heavy (21+): 5 KHTQ, KICT, KNJY, KRZR, WXTB
Medium (14-20): 7 KILO, KNCN, WEBN, WJRR, WTKX, WTPT, WZMT
Light (Under 14): 37
New Airplay This Week: 1 WWDC

METALLICA 476/261

Whiskey In The Jar (Elektra/EEG)

Total Stations: 55/Chart Move: Debut 30
Heavy (21+): 4 KAZR, KCAL, WJRR, WMFS
Medium (14-20): 10 KEGL, KICT, KILO, KISS, KOMP, KUFO, KXXR, WBUZ, WIYY, WTKX
Light (Under 14): 41
New Airplay This Week: 18 KEGL, KMBY, KNJY, KRAB, KRZR, KTAL, KUFO, KUPD, KXXR, WAAF, WFBQ, WHJY, WIOT, WLZR, WRIF, WTKX, WVRK, WXRA

KID ROCK 444/12

I Am The Bullgod (Top Dog/Lava/Atlantic)

Total Stations: 53/Chart Move: 31-32
Heavy (21+): 4 KNJY, WAAF, WBUZ, WZTA
Medium (14-20): 7 KAZR, KRZR, WCCC, WJRR, WTKX, WTPT, WXRC
Light (Under 14): 42

MARILYN MANSON 407/96

I Don't Like The Drugs (But The Drugs Like Me) (Nothing/Interscope)

Total Stations: 41/Chart Move: 39-33
Heavy (21+): 3 KNJY, KRAB, WXTM
Medium (14-20): 6 KUPD, WAAF, WBUZ, WMFS, WTFX, WXRA
Light (Under 14): 32
New Airplay This Week: 7 KIOZ, KRXQ, WCCC, WRQC, WTKX, WTPT, WXRC

SEVENDUST 370/-2

Bitch (TVT)

Total Stations: 48/Chart Move: 34-35
Heavy (21+): 4 KNJY, WAAF, WBUZ, WXTM
Medium (14-20): 4 KAZR, WCCC, WJRR, WLZR
Light (Under 14): 40
New Airplay This Week: 1 WTFX

LIMP BIZKIT 366/39

Faith (Flip/Interscope)

Total Stations: 37/Chart Move: 38-36
Heavy (21+): 3 KNJY, WAAF, WBUZ
Medium (14-20): 4 KAZR, WTKX, WXRC, WZMT
Light (Under 14): 30
New Airplay This Week: 1 KRAB

ORGY 341/36

Blue Monday (Elementree/Reprise)

Total Stations: 37/Chart Move: Debut 39
Heavy (21+): 2 KPOI, WJRR
Medium (14-20): 7 KICT, KISS, KNJY, WTPT, WXRC, WXTM, WZMT
Light (Under 14): 28
New Airplay This Week: 1 WRXL

CHART BOUND

Total Plays/Gain

MOON DOG MANE 329/-7

Turn It Up! (Eureka)

Total Stations: 32
Heavy (21+): 2 KHTQ, KMJX
Medium (14-20): 7 KEZO, KLPX, KNJY, KXUS, WAPL, WBAB, WZZO
Light (Under 14): 23

ROB ZOMBIE 326/131

Living Dead Girl (Geffen)

Total Stations: 43
Heavy (21+): 2 KRAB, KUPD
Medium (14-20): 5 KISW, KXXR, WJRR, WMFS, WXTM
Light (Under 14): 36
New Airplay This Week: 8 KISW, KNJY, KRZR, WIYY, WQXA, WRQC, WTPA, WXTM

CAKE 290/5

Never There (Capricorn/Mercury)

Total Stations: 19
Heavy (21+): 6 KPOI, KRAB, WJRR, WTKX, WZMT, WZTA
Medium (14-20): 5 KBPI, KTUX, WKLO, WQXA, WWDC
Light (Under 14): 8

STABBING WESTWARD 275/64

Haunting Me (Columbia)

Total Stations: 36
Heavy (21+): 2 KUPD, WJRR
Medium (14-20): 4 KRXQ, KXXR, WXRA, WZTA
Light (Under 14): 30
New Airplay This Week: 3 KNJY, WTKX, WYSP

PLACEBO 261/28

Pure Morning (Hut/Virgin)

Total Stations: 30
Heavy (21+): 2 WXTM, WZTA
Medium (14-20): 3 KPOI, WKLO, WZMT
Light (Under 14): 25

JERRY CANTRELL 246/0

Dickeye (Columbia)

Total Stations: 20
Heavy (21+): 1 KHTQ
Medium (14-20): 7 KEZO, KRZR, KSJO, WNOR, WRQC, WXRC, WZTA
Light (Under 14): 12

PANTERA 221/26

Hole In The Sky (EastWest/EEG)

Total Stations: 28
Heavy (21+): 2 KNJY, WXTM
Medium (14-20): 3 KHTQ, KUPD, WKRC
Light (Under 14): 23
New Airplay This Week: 1 WIYY

CREED 210/81

I'm Eighteen (Columbia)

Total Stations: 26
Heavy (21+): 1 WRIF
Medium (14-20): 4 WAQX, WIYY, WTKX, WYSP
Light (Under 14): 21
New Airplay This Week: 7 KHTQ, KNJY, KXXR, WMFS, WTFX, WXRC, WZMT

BLACK SABBATH 208/159

Selling My Soul (Epic)

Total Stations: 33
Heavy (21+): 2 KCAL, WRDU
Medium (14-20): 2 KOMP, KUPD
Light (Under 14): 29
New Airplay This Week: 9 KILO, KISW, KLB, KNJY, KOMP, KPOI, KRXQ, KUPD, WNCX

SOUL COUGHING 186/11

Circles (Slash/Warner Bros.)

Total Stations: 25
Heavy (21+): 2 WTKX, WZTA
Medium (14-20): 0
Light (Under 14): 23

QUEENS OF THE STONE AGE 158/25

If Only (Loose Groove)

Total Stations: 16
Heavy (21+): 0
Medium (14-20): 4 KISW, WAAF, WTKX, WZTA
Light (Under 14): 12
New Airplay This Week: 1 WVRK

NEW RADICALS 136/21

You Get What You Give (MCA)

Total Stations: 14
Heavy (21+): 2 KLPX, KRAB
Medium (14-20): 2 WBAB, WWDC
Light (Under 14): 10
New Airplay This Week: 1 WRXL

SUGAR RAY 122/35

Every Morning (Lava/Atlantic)

Total Stations: 15
Heavy (21+): 2 KPOI, WWDC
Medium (14-20): 3 KRAB, KRXQ, WBAB
Light (Under 14): 10
New Airplay This Week: 2 KRAB, WNEW

BARE JR. 118/114

You Blew Me Off (Immortal/Epic)

Total Stations: 23
Heavy (21+): 0
Medium (14-20): 1 KHTQ
Light (Under 14): 22
New Airplay This Week: 10 KCAL, KHTQ, KRXQ, KXXR, WEZX, WNCD, WQXA, WTKX, WTPA, WXTB

DEFTONES 115/10

Around The Fur (Maverick/Warner Bros.)

Total Stations: 18
Heavy (21+): 1 KNJY
Medium (14-20): 1 WXTM
Light (Under 14): 16

EAGLE-EYE CHERRY 112/-2

Save Tonight (WORK/ERG)

Total Stations: 6
Heavy (21+): 3 KPOI, WBAB, WWDC
Medium (14-20): 0
Light (Under 14): 3

HOLE 92/15

Malibu (DGC/Geffen)

Total Stations: 15
Heavy (21+): 0
Medium (14-20): 4 KRAB, WQXA, WTKX, WXRA
Light (Under 14): 11

THE OFFSPRING 77/-2

She's Got Issues (Columbia)

Total Stations: 3
Heavy (21+): 2 KCAL, KXXR
Medium (14-20): 0
Light (Under 14): 1

Charting based on songs with minimum 10 spins. This week's Total Plays/Gain are not available. (See page 10 for details on charting and reporting.)

THE BLACK CROWES 1885/26. Kicking My Heart Around (American/Columbia). Total Stations: 100. Chart Move: 3-3.

COLLECTIVE SOUL 768/518. Healy (Atlantic). Total Stations: 62. Chart Move: Debut 20.

CREED 1480/195. One (Wind-up). Total Stations: 91. Chart Move: 7-6.

ECONOLINE CRUSH 701/40. Surefire (Never Enough) (Restless). Total Stations: 57. Chart Move: 21-22.

EVE 6 683/127. Leech (RCA). Total Stations: 54. Chart Move: 25-23.

EVERLAST 1605/178. What It's Like (Tommy Boy). Total Stations: 70. Chart Move: 5-4.

THE FLYS 1178/38. Got You (Where I Want You) (Delicious Vinyl/Trauma). Total Stations: 73. Chart Move: 12-10.

FUEL 943/18. Bittersweet (550 Music/ERG). Total Stations: 66. Chart Move: 16-16.

GODSMACK 1038/104. Whatever (Republic/Universal). Total Stations: 67. Chart Move: 15-15.

INDIGENOUS 506/39. Now That You're Gone (Pachyderm). Total Stations: 44. Chart Move: 28-27.

Grid of song activity reports for artists: KISS, JONNY LANG, METALLICA, METALLICA, MONSTER MAGNET. Columns include station, song title, and chart position.

Grid of song activity reports for artists: THE OFFSPRING, REMY ZERO, KENNY WAYNE SHEPHERD BAND, SPRUNG MONKEY, TRAIN. Columns include station, song title, and chart position.



Compiled from a national sample of stations supplied by Broadcast Data Systems. (Radio Track service to Rock Airplay Monitor. \$1 active rock and \$1 heritage rock stations are electronically monitored 24 hours a day, 7 days a week. Songs are ranked by number of detections. © 1999, Billboard [BPI] Communications.

THIS WEEK	LAST WEEK	WKS. ON CHART	HERITAGE ROCK		DETECTIONS	
			TITLE/IMPRINT/PROMOTION LABEL	ARTIST	TW	LW
*** No. 1 ***						
1	1	11	KICKIN' MY HEART AROUND AMERICA/COLUMBIA 8 weeks at No. 1	THE BLACK CROWES	1093	1085
2	3	23	FLY AWAY VIRGIN	LENNY KRAVITZ	977	960
3	2	18	STILL RAININ' A&M	JONNY LANG	962	986
4	4	10	TURN THE PAGE ELEKTRA/EEG	METALLICA	920	932
5	5	18	SLIDE WARNER BROS.	GOO GOO DOLLS	909	908
6	6	11	EVERYTHING IS BROKEN REVOLUTION/REPRISE	KENNY WAYNE SHEPHERD BAND	863	811
7	7	13	FREE AWARE/COLUMBIA	TRAIN	686	662
8	10	5	ONE WIND-UP	CREED	547	441
9	11	15	NOW THAT YOU'RE GONE PACHYDERM	INDIGENOUS	435	409
10	9	31	WHAT'S THIS LIFE FOR WIND-UP	CREED	430	462
11	12	15	GOT YOU (WHERE I WANT YOU) DELICIOUS VINYL/TRAUMA	THE FLYS	416	401
12	8	15	PSYCHO MAN EPIC	BLACK SABBATH	414	481
13	16	7	YOU WANTED THE BEST MERCURY	KISS	382	365
*** AIRPOWER ***						
14	36	2	HEAVY ATLANTIC	COLLECTIVE SOUL	381	133
15	15	23	INSIDE OUT RCA	EVE 6	376	377
16	13	53	BLUE ON BLACK REVOLUTION/REPRISE	KENNY WAYNE SHEPHERD BAND	375	394
17	17	19	CELEBRITY SKIN DGC/GEFFEN	HOLE	375	343
18	18	33	THE DOWN TOWN OUTPOST/GEFFEN	DAYS OF THE NEW	334	306
19	14	10	GIMME SHELTER (LIVE) VIRGIN	THE ROLLING STONES	318	379
*** AIRPOWER ***						
20	24	8	WHAT IT'S LIKE TOMMY BOY	EVERLAST	310	248
21	20	18	BITTERSWEET 550 MUSIC/ERG	FUEL	264	272
22	19	21	PSYCHO CIRCUS MERCURY	KISS	258	274
23	21	17	TURN IT UP! EUREKA	MOON DOG MANE	256	270
24	23	14	PRETTY FLY (FOR A WHITE GUY) COLUMBIA	THE OFFSPRING	243	250
25	26	19	DRAGULA GEFEN	ROB ZOMBIE	235	230
26	22	20	YOUR LIFE IS NOW COLUMBIA	JOHN MELLENCAMP	230	263
27	28	4	ANOTHER BRICK IN THE WALL (PART 2) COLUMBIA	CLASS OF '99	210	209
28	27	13	10,000 HORSES MAVERICK/WARNER BROS.	CANDLEBOX	207	228
29	25	9	ELDERLY WOMAN BEHIND THE COUNTER IN A SMALL TOWN (LIVE) EPIC	PEARL JAM	204	235
30	31	8	WHATEVER REPUBLIC/UNIVERSAL	GODSMACK	194	167
31	30	16	SWEETEST THING ISLAND	U2	174	180
32	34	4	LEECH RCA	EVE 6	165	141
33	29	11	I WANNA BE WITH YOU COLUMBIA	BRUCE SPRINGSTEEN	148	209
34	35	6	SUREFIRE (NEVER ENOUGH) RESTLESS	ECONOLINE CRUSH	135	141
35	39	7	POWERTRIP A&M	MONSTER MAGNET	128	117
36	37	2	PROPHECY DGC/GEFFEN	REMY ZERO	127	121
37	NEW		SELLING MY SOUL EPIC	BLACK SABBATH	119	39
38	32	12	THE SPIRIT OF RADIO (LIVE) ANTHEM/ATLANTIC	RUSH	110	158
39	NEW		WHISKEY IN THE JAR ELEKTRA/EEG	METALLICA	107	35
40	38	10	NOBODY'S WIFE COLUMBIA	ANOUE	103	119

Records showing an increase in detections over the previous week, regardless of chart movement. A record that has been on the chart for more than 20 weeks will not receive a bullet, even if it registers an increase in detections. Airpower awarded to those records that attain 300 detections for the first time. If two records are tied in number of plays, the record being played on more stations is placed first. Records below the top 20 are removed from the chart after 26 weeks.

THIS WEEK	LAST WEEK	WKS. ON CHART	ACTIVE ROCK		DETECTIONS	
			TITLE/IMPRINT/PROMOTION LABEL	ARTIST	TW	LW
*** No. 1 ***						
1	1	10	TURN THE PAGE ELEKTRA/EEG 9 weeks at No. 1	METALLICA	1429	1407
2	2	10	WHAT IT'S LIKE TOMMY BOY	EVERLAST	1295	1179
3	3	28	FLY AWAY VIRGIN	LENNY KRAVITZ	1119	1145
4	5	15	PRETTY FLY (FOR A WHITE GUY) COLUMBIA	THE OFFSPRING	1043	1031
5	4	24	DRAGULA GEFEN	ROB ZOMBIE	971	1078
6	7	6	ONE WIND-UP	CREED	933	844
7	10	16	WHATEVER REPUBLIC/UNIVERSAL	GODSMACK	844	767
8	6	21	CELEBRITY SKIN DGC/GEFFEN	HOLE	803	853
9	9	10	KICKIN' MY HEART AROUND COLUMBIA	THE BLACK CROWES	792	774
10	11	20	GOT YOU (WHERE I WANT YOU) DELICIOUS VINYL/TRAUMA	THE FLYS	762	739
11	8	15	PSYCHO MAN EPIC	BLACK SABBATH	706	774
12	13	17	BITTERSWEET 550 MUSIC/ERG	FUEL	679	653
13	14	6	ANOTHER BRICK IN THE WALL (PART 2) COLUMBIA	CLASS OF '99	613	616
14	12	33	WHAT'S THIS LIFE FOR WIND-UP	CREED	611	658
15	16	15	POWERTRIP A&M	MONSTER MAGNET	593	556
16	15	18	SLIDE WARNER BROS.	GOO GOO DOLLS	575	597
17	18	17	SUREFIRE (NEVER ENOUGH) RESTLESS	ECONOLINE CRUSH	566	520
18	22	6	LEECH RCA	EVE 6	518	415
19	17	24	GOT THE LIFE IMMORTAL/EPIC	KORN	515	534
20	20	9	SUPER BREAKDOWN SURFOOG/HOLLYWOOD	SPRUNG MONKEY	511	457
21	23	13	I AM THE BULLGOD TOP DOG/LAVA/ATLANTIC	KID ROCK	414	414
22	21	21	SOFT CAPITOL	SECOND COMING	408	431
23	NEW		HEAVY ATLANTIC	COLLECTIVE SOUL	387	117
24	NEW		WHISKEY IN THE JAR ELEKTRA/EEG	METALLICA	369	180
25	30	4	I DON'T LIKE THE DRUGS (BUT THE DRUGS LIKE ME) NOTHING/INTERSCOPE	MARILYN MANSON	363	278
26	25	5	PROPHECY DGC/GEFFEN	REMY ZERO	356	324
27	26	12	FAITH FLIP/INTERSCOPE	LIMP BIZKIT	348	316
28	27	12	BITCH TVT	SEVENDUST	310	316
29	NEW		LIVING DEAD GIRL GEFEN	ROB ZOMBIE	301	187
30	24	9	ELDERLY WOMAN BEHIND THE COUNTER IN A SMALL TOWN (LIVE) EPIC	PEARL JAM	298	333
31	34	6	EVERYTHING IS BROKEN REVOLUTION/REPRISE	KENNY WAYNE SHEPHERD BAND	297	254
32	31	5	BLUE MONDAY ELEMENTREE/REPRISE	ORGY	285	262
33	35	10	STILL RAININ' A&M	JONNY LANG	273	247
34	32	8	NEVER THERE CAPRICORN/MERCURY	CAKE	263	259
35	28	22	THE DOPE SHOW NOTHING/INTERSCOPE	MARILYN MANSON	261	304
36	29	11	EVERY LITTLE THING COUNTS EARACHE/TRAUMA	JANUS STARK	260	280
37	40	2	HAUNTING ME COLUMBIA	STABBING WESTWARD	246	188
38	36	5	YOU WANTED THE BEST MERCURY	KISS	242	219
39	33	9	NOBODY KNOWS BIG CAT/W2	ADDICT	234	255
40	38	3	PURE MORNING HUT/VIRGIN	PLACEBO	209	189

Records showing an increase in detections over the previous week, regardless of chart movement. A record that has been on the chart for more than 20 weeks will not receive a bullet, even if it registers an increase in detections. Airpower awarded to those records that attain 400 detections for the first time. If two records are tied in number of plays, the record being played on more stations is placed first. Records below the top 20 are removed from the chart after 26 weeks.

GREATEST GAINERS

INCREASE IN PLAYS

COLLECTIVE SOUL • Heavy (ATLANTIC)	+248
WSTZ +24, KM8Y +17, WKQQ +17, KLPX +14, WNCO +13, KEZO +13, WDVE +12, WKLC +11, KOMP +11, KLAQ +11	
CREED • One (WIND-UP)	+106
KCAL +21, KOMP +13, WBAB +11, WRQC +10, WCKW +8, KDKB +8, WOHA +7, KEZO +7, WIXV +5, WNEW +5	
BLACK SABBATH • Selling My Soul (EPIC)	+80
KCAL +31, WNCX +13, KOMP +11, WRDU +8, WFYV +4, WZZO +3, WROV +3, WRQC +2, WSTZ +1, KMOD +1	
METALLICA • Whiskey In The Jar (ELEKTRA/EEG)	+72
KCAL +10, WFBO +10, KM8Y +7, WVRK +7, KOMP +7, KTAL +6, WRQC +5, KLPX +5, WFLY +5, WROV +4	
EVERLAST • What It's Like (TOMMY BOY)	+62
KTAL +9, WONE +9, WROV +6, WFYV +6, KFRQ +5, KLAQ +4, WNEW +4, WRQC +3, KLPX +3, WCKW +3	

GREATEST GAINERS

INCREASE IN PLAYS

COLLECTIVE SOUL • Heavy (ATLANTIC)	+270
WXRA +20, WTUE +19, KAZR +15, WNOR +15, WIYY +15, WZTA +14, KICT +14, KISW +14, KLBK +12, KISS +12	
METALLICA • Whiskey In The Jar (ELEKTRA/EEG)	+189
KXXR +20, KEGL +16, KUFO +14, WTKX +13, KRZR +13, KRAB +12, KUPD +11, WMFS +10, KNJY +9, WXRA +9	
EVERLAST • What It's Like (TOMMY BOY)	+116
KHTQ +19, KISW +11, KUPD +10, KBPI +10, WBUZ +9, WJRR +8, WTPA +8, KISS +8, KQRC +6, WWDC +6	
ROB ZOMBIE • Living Dead Girl (GEFFEN)	+114
KRAB +18, WXTM +15, KISW +14, KNJY +9, WTPA +8, KRZR +8, WIYY +6, WBUZ +5, WMFS +5, KTUX +4	
EVE 6 • Leech (RCA)	+103
KHTQ +16, KPOI +10, WJRR +9, WTPA +9, WWOC +9, WTPT +7, WMFS +6, WBZX +6, WZMT +5, KILO +5	


WXRK New York
PD: Steve Kingstone
MD: Mike Peer
Music Coord: Booker
212-314-9230
CBS



KROQ Los Angeles
VP/Pgm: Kevin Weatherly
APD: Gene Sandbloom
MD: Lisa Worden
818-567-1067
CBS

TW	LW		
1	Hole, Celebrity Skin	36	35
2	Everlast, What It's Like	34	35
3	Creed, Tom	33	33
4	Lenny Kravitz, Fly Away	33	33
5	Metallica, Turn The Page	33	35
6	Rob Zombie, Dragula	31	34
7	Pearl Jam, Elderly Woman Behind The	29	27
8	Placebo, Pure Morning	27	21
9	Rob Zombie, Living Dead Girl	24	26
10	Korn, Got The Life	24	24
11	The Offspring, Pretty Fly (For A White Guy)	23	24
12	Everclear, One Hit Wonder	22	18
13	Sugar Ray, Every Morning	21	24
14	Marilyn Manson, The Dope Show	20	21
15	Creed, What's This Life For	19	22
16	Tool, Eulogy	19	22
17	Everclear, Father Of Mine	19	22
18	Creed, One	18	23
19	Blink 182, Dammit	18	15
20	Orgy, Blue Monday	17	19
21	The Offspring, Why Don't You Get A Job?	17	16
22	Sublime, Badfish	17	25
23	Rage Against The Machine, No Shelter	17	25
24	Hole, Malibu	17	25
25	Everlast, Ends	16	0
26	Stabbing Westward, Save Yourself	16	7
27	Korn, Freak On A Leash	16	11
28	The Living End, Prisoner Of Society	15	9
29	Beastie Boys, Intergalactic	15	9
30	The Flies, Got You (Where I Want You)	14	16


WXRK New York
PD: Steve Kingstone
MD: Mike Peer
Music Coord: Booker
212-314-9230
CBS



KROQ Los Angeles
VP/Pgm: Kevin Weatherly
APD: Gene Sandbloom
MD: Lisa Worden
818-567-1067
CBS

TW	LW		
1	The Offspring, Why Don't You Get A Job?	42	35
2	Sugar Ray, Every Morning	39	36
3	Everlast, What It's Like	39	35
4	Hole, Malibu	39	37
5	Beastie Boys, The Negotiation Limerick	38	34
6	The Offspring, Pretty Fly (For A White Guy)	31	29
7	Hole, Celebrity Skin	28	23
8	U2, Sweetest Thing	28	23
9	Cake, Never There	28	23
10	Garbage, Special	27	26
11	Fuel, Shimmer	27	26
12	Korn, Got The Life	25	21
13	Everclear, Father Of Mine	24	18
14	Lenny Kravitz, Fly Away	24	18
15	Eve 6, Inside Out	23	15
16	Beastie Boys, Body Movin'	23	23
17	Jimmy Eat World, Lucky Denver Mint	22	17
18	Neve, It's Over Now	20	19
19	The Smashing Pumpkins, Ava Adore	20	19
20	Sublime, Badfish	20	17
21	Harvey Danger, Flagpole Sitta	19	17
22	The Cardigans, My Favourite Game	18	26
23	Sheryl Crow, It's All Been Done	18	16
24	Fatboy Slim, Praise You	17	18
25	Green Day, Time Of Your Life	16	11
26	Rage Against The Machine, No Shelter	16	16
27	Vast, Touched	13	19
28	Creed, One	15	21
29	Korn, Freak On A Leash	15	16
30	Blink 182, Dammit	15	13

WKQX Chicago
VP/Pgm: Dave Richards
MD: Mary Shuminas
312-527-8348
Emmis



WBCN Boston
VP/Pgm: Oedipus
MD: Steve Strick
AMD: Mike Green
617-266-1111
CBS

TW	LW		
1	The Offspring, Pretty Fly (For A White Guy)	47	31
2	Everlast, What It's Like	41	40
3	Lenny Kravitz, Fly Away	37	39
4	Rob Zombie, Dragula	28	29
5	The Flies, Got You (Where I Want You)	26	27
6	Orgy, Blue Monday	25	22
7	Fatboy Slim, Praise You	24	30
8	Sugar Ray, Every Morning	23	24
9	U2, Sweetest Thing	23	19
10	Beastie Boys, Body Movin'	23	24
11	The Cardigans, My Favourite Game	23	25
12	Beastie Boys, Intergalactic	22	11
13	Oava Matthews Band, Crush	21	21
14	Cake, Never There	20	22
15	Hole, Celebrity Skin	20	2
16	Hole, Malibu	20	18
17	Vast, Touched	20	17
18	The Crystal Method, Busy Child	20	19
19	Placebo, Pure Morning	20	11
20	The Chemical Brothers, Block Rockin' Beats	17	21
21	Eve 6, Leech	16	14
22	Soul Couching, Circles	16	22
23	Foo Fighters, Everlong	15	8
24	Korn, Got The Life	14	18
25	Stone Temple Pilots, Plush	14	17
26	Garbage, Special	14	17
27	Goo Go Dolls, Slide	13	19
28	Barenaked Ladies, It's All Been Done	13	18
29	Foo Fighters, Monkey Wrench	13	9
30	Marilyn Manson, I Don't Like The Drugs	13	20


WBCN Boston
VP/Pgm: Oedipus
MD: Steve Strick
AMD: Mike Green
617-266-1111
CBS



KLTY Los Angeles
PD: John Duncan
MD: Mike Savage
626-351-9107
Big City Radio

TW	LW		
1	Everlast, What It's Like	39	14
2	U2, Sweetest Thing	39	14
3	Beastie Boys, Body Movin'	38	10
4	Metallica, Turn The Page	37	10
5	Dave Matthews Band, Crush	37	6
6	Hole, Celebrity Skin	36	11
7	Rob Zombie, Dragula	36	8
8	Korn, Got The Life	33	20
9	Sugar Ray, Every Morning	28	10
10	Placebo, Pure Morning	28	10
11	Fatboy Slim, Praise You	27	11
12	Hole, Malibu	26	11
13	Goo Go Dolls, Slide	25	17
14	Orgy, Blue Monday	24	11
15	Eve 6, Leech	24	11
16	Class Of '99, Another Brick In The Wall	24	8
17	Liz Phair, Polyester Bnde	24	7
18	The Smashing Pumpkins, To Sheila	24	10
19	The Cardigans, My Favourite Game	24	8
20	Cake, Never There	24	9
21	The Offspring, Pretty Fly (For A White Guy)	23	12
22	Remy Zero, Prophecy	23	9
23	Garbage, Special	23	8
24	Social Distortion, Stigm Of My Life	23	7
25	The Flies, Got You (Where I Want You)	23	7
26	Marvelous 3, Freak Of The Week	18	0
27	Tin Star, Head	17	1
28	The Black Crowes, Kickin' My Heart Around	17	1
29	Love And Rockets, Holy Fool	16	2
30	Alanis Morissette, Joining You	15	0


WBCN Boston
VP/Pgm: Oedipus
MD: Steve Strick
AMD: Mike Green
617-266-1111
CBS



KLTY Los Angeles
PD: John Duncan
MD: Mike Savage
626-351-9107
Big City Radio

TW	LW		
1	Cake, Never There	40	38
2	New Radicals, You Get What You Give	39	40
3	Everclear, Father Of Mine	39	33
4	Lenny Kravitz, Fly Away	39	42
5	Everlast, What It's Like	38	37
6	Hole, Celebrity Skin	36	40
7	Marcy Playground, Sex And Candy	31	27
8	U2, Sweetest Thing	30	28
9	Remy Zero, Prophecy	30	26
10	The Cardigans, My Favourite Game	29	28
11	Creed, One	28	27
12	Khaled, No Mercy	28	27
13	Garbage, Special	28	25
14	Eagle-Eye Cherry, Save Tonight	27	28
15	The Smashing Pumpkins, Perfect	27	21
16	Love And Rockets, Holy Fool	27	18
17	Soul Couching, Circles	27	28
18	Neve, It's Over Now	25	24
19	Eve 6, Inside Out	24	22
20	Harvey Danger, Flagpole Sitta	24	9
21	Sugar Ray, Every Morning	19	29
22	Goo Go Dolls, Slide	18	15
23	Everclear, Everything To Everyone	18	17
24	Garbage, I Think I'm Paranoid	18	27
25	The Candy Skins, Feed It	17	18
26	Alanis Morissette, Joining You	17	17
27	Shawn Mullins, Lullaby	17	18
28	The Mighty Mighty Bosstones, The Impression	16	13
29	Fuel, Bittersweet	16	29
30	Everclear, I Will Buy You A New Life	16	11

WPLY Philadelphia
PD: Jim McGuinn
APD: Doug Kubinski
MD: Preston Elliott
610-565-8900
Greater Media Radio Co



WPLT Detroit
PD: Garrett Michaels
MD: Ann Delisi
313-871-3030
ABC/Disney

TW	LW		
1	Lenny Kravitz, Fly Away	44	43
2	Goo Go Dolls, Slide	43	42
3	Dave Matthews Band, Crush	41	40
4	Sugar Ray, Every Morning	40	35
5	New Radicals, You Get What You Give	40	31
6	Fuel, Shimmer	40	40
7	Eve 6, Inside Out	39	41
8	Everlast, What It's Like	35	33
9	Cake, Never There	35	33
10	Hole, Celebrity Skin	32	31
11	U2, Sweetest Thing	32	30
12	Third Eye Blind, Jumper	32	40
13	Hole, Malibu	32	32
14	Barenaked Ladies, It's All Been Done	29	30
15	Matchbox 20, Back 2 Good	29	31
16	Eagle-Eye Cherry, Save Tonight	28	39
17	Better Than Ezra, At The Stars	27	24
18	The Offspring, Pretty Fly (For A White Guy)	25	21
19	Sheryl Crow, My Favorite Mistake	23	30
20	Pearl Jam, Elderly Woman Behind The	22	19
21	Shawn Mullins, Lullaby	21	22
22	Everclear, Father Of Mine	20	20
23	The Flies, Got You (Where I Want You)	20	19
24	Marvelous 3, Freak Of The Week	20	24
25	The Smashing Pumpkins, Perfect	19	20
26	Garbage, Special	19	22
27	Barenaked Ladies, One Week	17	17
28	Soul Couching, Circles	17	17
29	Beastie Boys, Intergalactic	17	18
30	Goo Go Dolls, Ins	16	17


WHFS Washington, DC
PD: Robert Benjamin
APD: Bob Waugh
MD: Pat Ferrise
301-306-0991
CBS



WPLT Detroit
PD: Garrett Michaels
MD: Ann Delisi
313-871-3030
ABC/Disney

TW	LW		
1	Everlast, What It's Like	43	40
2	Cake, Never There	42	36
3	Sugar Ray, Every Morning	40	35
4	The Cardigans, My Favourite Game	34	35
5	Marvelous 3, Freak Of The Week	33	17
6	U2, Sweetest Thing	33	27
7	Hole, Malibu	33	32
8	Lenny Kravitz, Fly Away	31	26
9	Garbage, Special	29	24
10	The Offspring, Pretty Fly (For A White Guy)	26	24
11	New Radicals, You Get What You Give	25	26
12	Eagle-Eye Cherry, Save Tonight	25	25
13	Hole, Celebrity Skin	25	29
14	Remy Zero, Prophecy	24	33
15	Fatboy Slim, Praise You	23	22
16	Tin Star, Head	22	20
17	The Offspring, Why Don't You Get A Job?	21	19
18	Khaled, No Mercy	20	17
19	Art Alexakis, Overwhelm	19	17
20	Eve 6, Inside Out	18	17
21	Dave Matthews Band, Crush	18	12
22	The Smashing Pumpkins, Perfect	18	24
23	Eve 6, Leech	18	16
24	Harvey Danger, Flagpole Sitta	15	17
25	Blur, Song 2	15	15
26	Fuel, Shimmer	15	29
27	Sublime, Wrong Way	15	14
28	Creed, My Own Prison	15	13
29	Beastie Boys, Intergalactic	15	19
30	Everclear, Father Of Mine	15	16

WHFS Washington, DC
PD: Robert Benjamin
APD: Bob Waugh
MD: Pat Ferrise
301-306-0991
CBS



WPLT Detroit
PD: Garrett Michaels
MD: Ann Delisi
313-871-3030
ABC/Disney

TW	LW		
1	Dave Matthews Band, Crush	41	38
2	Shawn Mullins, Lullaby	41	40
3	Eve 6, Inside Out	40	39
4	Goo Go Dolls, Slide	40	39
5	Silence Non The Richer, Kiss Me	40	40
6	Sarah McLachlan, Angel	39	36
7	Eagle-Eye Cherry, Save Tonight	38	39
8	Cake, Never There	38	28
9	Sugar Ray, Every Morning	26	23
10	Soul Couching, Circles	26	25
11	Fuel, Shimmer	26	24
12	Lenny Kravitz, Fly Away	26	24
13	Everything, Koolhaas	24	26
14	Everlast, What It's Like	24	23
15	Alanis Morissette, Thank U	24	27
16	Jewel, Hands	24	23
17	Third Eye Blind, Jumper	24	25
18	Natalie Merchant, Break Your Heart	23	23
19	Sheryl Crow, My Favorite Mistake	23	24
20	Barenaked Ladies, It's All Been Done	23	24
21	Matchbox 20, Back 2 Good	22	22
22	Better Than Ezra, At The Stars	22	22
23	U2, Sweetest Thing	22	22
24	New Radicals, You Get What You Give	22	21
25	Semisonic, Secret Smile	21	19
26	Sheryl Crow, There Goes The Neighborhood	20	23
27	R.E.M., Lotus	20	21
28	dc Talk, Consume Me	19	16
29	The Flies, Got You (Where I Want You)	16	15
30	Barenaked Ladies, One Week	15	17

WKQX Chicago
VP/Pgm: Dave Richards
MD: Mary Shuminas
312-527-8348
Emmis



WNNX Atlanta
PD: Leslie Fram
APD/MD: Sean Demery
404-266-0997
Susquehanna

TW	LW		
1	Everlast, What It's Like	62	52
2	Hole, Celebrity Skin	59	55
3	Lenny Kravitz, Fly Away	59	63
4	Cake, Never There	45	41
5	Everclear, Father Of Mine	44	56
6	Eve 6, Inside Out	43	57
7	Fuel, Shimmer	43	26
8	Sugar Ray, Every Morning	40	36
9	Alanis Morissette, Joining You	38	35
10	Korn, Got The Life	38	42
11	Orgy, Blue Monday	38	40
12	Placebo, Pure Morning	36	41
13	Creed, One	33	36
14	Harvey Danger, Flagpole Sitta	32	38
15	Remy Zero, Prophecy	29	24
16	Green Day, Time Of Your Life	25	25
17	Limp Bizkit, Faith	25	17
18	The Smashing Pumpkins, Perfect	24	27
19	Goo Go Dolls, Slide	24	22
20	Creed, What's This Life For	23	25
21	Third Eye Blind, Graduate	23	20
22	Beastie Boys, Intergalactic	22	25
23	The Crystal Method, Busy Child	22	28
24	Third Eye Blind, How's It Going To Be	22	18
25	Hole, Malibu	21	20
26	Stabbing Westward, Save Yourself	21	20
27	Third Eye Blind, Jumper	20	23
28	Pearl Jam, Elderly Woman Behind The	19	25
29	Tripping Daisy, Sonic Bloom	19	19
30	Barenaked Ladies, One Week	16	0

WBCN Boston
VP/Pgm: Oedipus
MD: Steve Strick
AMD: Mike Green
617-266-1111
CBS



WNNX Atlanta
PD: Leslie Fram
APD/MD: Sean Demery
404-266-0997
Susquehanna

TW	LW		
1	Marvelous 3, Freak Of The Week	41	35
2	Sugar Ray, Every Morning	39	36
3	Everlast, What It's Like	38	38
4	Hole, Malibu	38	38
5	Collective Soul, Heavy	32	19
6	Dave Matthews Band, Crush	30	16
7	The Cardigans, My Favourite Game	27	37
8	The Flies, Got You (Where I Want You)	27	35
9	Lackey, What Can I Say	27	18
10	Vast, Touched	26	20
11	Cake, Sheep Go To Heaven	26	1
12	Goo Go Dolls, Slide	25	21
13	Khaled, No Mercy	25	21
14	Lenny Kravitz, Black Velvet	25	1
15	Creed, One	24	20
16	Collective Soul, Run	24	20
17	Zebrahead, Get Back	24	22
18	Hole, Celebrity		

STABBING WESTWARD HAUNTING ME

FROM
THE *KILLER* SOUNDTRACK

THE FACULTY



MUSIC FROM THE DIMENSION MOTION PICTURE

ALREADY ON:

KNDD

WHFS

Q101

WENZ

WXDX

KWOD

KCXX

WMRQ

AND MANY MORE!

OVER 100,000 SCANNED IN 4 WEEKS!

US TOUR STARTS IN FEBRUARY

PRODUCED BY STABBING WESTWARD & ULRICH WILD. WORLDWIDE REPRESENTATION: BARBARA ROSE AT AGM.



SONY MUSIC
SOUNDTRACK

COLUMBIA

www.stabbingwestward.com www.columbiarecords.com www.dimensionfilms.com

Tom Morello appears courtesy of Epic Records, A Division of Sony Music Entertainment Inc. Stephen Perkins appears courtesy of Warner Bros. Records

"Columbia" Reg. U.S. Pat. & Tm. Off. Marca Registrada. © 1998 Sony Music Entertainment Inc. Motion Picture Artwork: © 1998 Miramax Film Corp. All Rights Reserved. MTV and all related titles and logos are trademarks of Viacom International, Inc.

World Radio History

WKDF Nashville PD: Hedd Redd MD: Sheri Sexton 615-244-9533 Dick Broadcasting



Table with 2 columns: Song Title, Airplay Index. Includes tracks like 'Sugar Ray, Every Morning', 'Creed, One', 'Goo Goo Dolls, Slide'.

WQBK Albany PD/MD: Kelli Maramara AMD: Jeff Callan 518-462-5555 Radio Enterprises



Table with 2 columns: Song Title, Airplay Index. Includes tracks like 'Cake, Never There', 'Lenny Kravitz, Fly Away', 'Barenaked Ladies, It's All Been Done'.

KXPX Denver APD/MD: Eric Schmidt 303-832-5665 Chancellor



Table with 2 columns: Song Title, Airplay Index. Includes tracks like 'Everlast, What It's Like', 'Beastie Boys, Body Movin'', 'Hole, Celebrity Skin'.

WRAX Birmingham PD: Dave Rossi APD: Hurricane Shane MD: Suzy Boe 205-945-4646 Dick Broadcasting



Table with 2 columns: Song Title, Airplay Index. Includes tracks like 'Sugar Ray, Every Morning', 'Lenny Kravitz, Fly Away', 'Goo Goo Dolls, Slide'.

WGRD Grand Rapids PD/MD: Margot Smith AMD: Tim Bronson 616-459-4111 Capstar



Table with 2 columns: Song Title, Airplay Index. Includes tracks like 'Cake, Never There', 'Goo Goo Dolls, Slide', 'Lenny Kravitz, Fly Away'.

WXDG Detroit PD: Amy Doyle MD: Spike 313-298-3343 Greater Media



Table with 2 columns: Song Title, Airplay Index. Includes tracks like 'Everclear, Father Of Mine', 'Goo Goo Dolls, Slide', 'Lenny Kravitz, Fly Away'.

WBRU Providence PD: Tim Schiavelli 401-272-9550 Brown Broadcasting



Table with 2 columns: Song Title, Airplay Index. Includes tracks like 'Fuel, Bittersweet', 'The Offspring, Pretty Fly (For A White Guy)', 'Goo Goo Dolls, Slide'.

KTCL Denver PD: Mike O'Connor 303-623-9330 Tsunami Communications



Table with 2 columns: Song Title, Airplay Index. Includes tracks like 'Garbage, I Think I'm Paranoid', 'Cake, Never There', 'Everlast, What It's Like'.

WFNX Boston PD: Laurie Gail AMD: Kevin Mays 781-595-6200 Phoenix Media



Table with 2 columns: Song Title, Airplay Index. Includes tracks like 'Sugar Ray, Every Morning', 'Everlast, What It's Like', 'Hole, Malibu'.

KNRK Portland, OR PD/MD: Mark Hamilton 503-223-1441 Entercom



Table with 2 columns: Song Title, Airplay Index. Includes tracks like 'The Offspring, Pretty Fly (For A White Guy)', 'Everlast, What It's Like', 'Third Eye Blind, Jumper'.

KCXX Riverside/San Bernardino OM/PD: Dwight Arnold MD: Bruce Pulley 909-384-1039 All Pro Broadcasting



Table with 2 columns: Song Title, Airplay Index. Includes tracks like 'The Offspring, Pretty Fly (For A White Guy)', 'Creed, One', 'Sugar Ray, Every Morning'.

WZAZ Columbus PD: Matthew Harris APD: Ben Williams 614-841-9696 Jacor



Table with 2 columns: Song Title, Airplay Index. Includes tracks like 'Eagle-Eye Cherry, Save Tonight', 'The Flies, Got You (Where I Want You)', 'Everlast, What It's Like'.

KXRR Salt Lake City PD: Mike Summers MD: Sean Ziebarth 801-364-9601 Simmons



Table with 2 columns: Song Title, Airplay Index. Includes tracks like 'Everlast, What It's Like', 'Marvelous 3, Freak Of The Week', 'New Radicals, You Get What You Give'.

WEND Charlotte PD: Jack Daniel MD: Kristen Pettus 704-338-9600 Dalton Group



Table with 2 columns: Song Title, Airplay Index. Includes tracks like 'Everlast, What It's Like', 'Goo Goo Dolls, Slide', 'Shawn Mullins, Lullaby'.

WNVE Rochester PD/MD: Erick Anderson 716-246-0440 Jacor



Table with 2 columns: Song Title, Airplay Index. Includes tracks like 'Third Eye Blind, Jumper', 'Everlast, What It's Like', 'Goo Goo Dolls, Slide'.

WEDG Buffalo OM: John Hager PD/MD: Rich Wall 716-881-4555 Mercury Broadcasting



Table with 2 columns: Song Title, Airplay Index. Includes tracks like 'Lenny Kravitz, Fly Away', 'The Flies, Got You (Where I Want You)', 'Creed, What It's Like'.

KKND New Orleans OM: Dave Stewart APD/MD: Rod Ryan 504-679-7300 Clear Channel



Table with 2 columns: Song Title, Airplay Index. Includes tracks like 'Placebo, Pure Morning', 'Garbage, Special', 'Cake, Never There'.

KENZ Salt Lake City PD: Bruce Jones MD: Andrea Gappmayer 801-470-1075 Citadel



Table with 2 columns: Song Title, Airplay Index. Includes tracks like 'Barenaked Ladies, It's All Been Done', 'Everlast, What It's Like', 'Sheryl Crow, My Favorite Mistake'.

WPBZ West Palm Beach OM/PD: John O'Connell APD/MD: Dan O'Brien 561-616-4600 Palm Beach Radio



Table with 2 columns: Song Title, Airplay Index. Includes tracks like 'Lenny Kravitz, Fly Away', 'Everclear, Father Of Mine', 'Shawn Mullins, Lullaby'.

KFRF Fresno PD: Bruce Wayne 209-255-1041 Ionosphere Broadcasting



Table with 2 columns: Song Title, Airplay Index. Includes tracks like 'Lenny Kravitz, Fly Away', 'The Flies, Got You (Where I Want You)', 'Sugar Ray, Every Morning'.

KXTE Las Vegas APD: Dave Wellington APD: Chris Ripley 702-889-7500 CBS



Table with 2 columns: Song Title, Airplay Index. Includes tracks like 'Limp Bizkit, Faith', 'Godsmack, Wake Up', 'Sevendust, Bitch'.

KMYZ Tulsa PD: Lynn Barstow MD: Ray Dog 918-665-3131 Shamrock



Table with 2 columns: Song Title, Airplay Index. Includes tracks like 'Everlast, What It's Like', 'Cake, Never There', 'Lenny Kravitz, Fly Away'.

KROX Austin PD: Sara Trexler MD: Brad Hastings 512-832-4000 LBJS Broadcasting



Table with 2 columns: Song Title, Airplay Index. Includes tracks like 'Rob Zombie, Dragula', 'Korn, Got The Life', 'Class Of '99, Another Brick In The Wall'.

WXEG Dayton PD: Jeff Stevens MD: Alan Rantz 937-224-1137 Jacor



Table with 2 columns: Song Title, Airplay Index. Includes tracks like 'The Flies, Got You (Where I Want You)', 'New Radicals, You Get What You Give', 'Shawn Mullins, Lullaby'.

Upward-moving songs ranked in order of spin count. Songs are removed if they lose more than 5% of their detections from previous week or if their spin count declines for two consecutive weeks.

MOST NEW STATIONS

Songs detecting six or more spins at new stations this week

NEW STATIONS	Song
25	COLLECTIVE SOUL <i>Heavy (Atlantic)</i>
18	EVERCLEAR <i>One Hit Wonder (Capitol)</i>
14	LIVING END <i>Prisoner Of Society (Reprise)</i>
9	BARE JR. <i>You Blew Me Off (Immortal/Epic)</i>
8	MARILYN MANSON <i>I Don't Like The Drugs (Nothing/Interscope)</i>

Total Plays/Gain

CREED 1115/161

One (Wind-up)
Total Stations: 52/Chart Move: 27-21
Heavy (30+ plays): 13 KCXX, KDGE, KFMA, KKND, KROX, KXTE, WBRU, WGRD, WLRS, WMRO, WPLA, WRAX, WXZZ
Medium (15-29): 25 KDRE, KFTE, KITS, KLYY, KLZR, KMYZ, KNRK, KPNT, KRAD, KROQ, KTCL, WARQ, WAVF, WBCN, WEDG, WJBX, WKRL, WKRO, WNFZ, WNNX, WRXQ, WRZX, WXDX, WXNR, WXRK
Light (Under 15): 14
New Airplay This Week: 2 KJEE, KXRK

AIRPOWER BOUND

Total Plays/Gain

DAVE MATTHEWS BAND 1004/129

Crush (RCA)
Total Stations: 46/Chart Move: 30-25
Heavy (30+): 13 KDRE, KTOZ, WBCN, WBRU, WEND, WEQX, WNNX, WPLT, WPLY, WQBK, WRAX, WXDG, WXZZ
Medium (15-29): 20 KAEP, KLZR, KMYZ, KXRK, KZON, KZON, WARQ, WCYY, WEDG, WENZ, WHFS, WKQX, WKRL, WMRO, WNVE, WRXR, WXEG, WXNR, WZAZ, XTRA
Light (Under 15): 13

THE CARDIGANS 997/71

My Favourite Game (Stockholm/Mercury)
Total Stations: 51/Chart Move: 28-26
Heavy (30+): 8 CIMX, KDRE, KJEE, KNRK, KWOD, KZAZ, WHFS, XTRA
Medium (15-29): 28 CFNY, KENZ, KFMA, KFRR, KITS, KKDM, KLYY, KLZR, KNDD, KRAD, KROQ, KZON, WARQ, WBCN, WBRU, WBTZ, WEND, WEQX, WFNX, WGRD, WKQX, WMRO, WNNX, WPBZ, WXDX, WXEG, WXZZ, WZAZ
Light (Under 15): 15
New Airplay This Week: 1 KFRR

REMY ZERO 951/62

Prophecy (DGC/Geffen)
Total Stations: 58/Chart Move: 29-28
Heavy (30+): 6 KDRE, KJEE, KLYY, KROX, WLRS, WXZZ
Medium (15-29): 30 CFNY, KDGE, KFMA, KFTE, KKDM, KKND, KMYZ, KNDD, KPNT, KRAD, KWOD, WARQ, WAVF, WBCN, WCYY, WEDG, WFNX, WHFS, WJAX, WKRL, WKRO, WMRO, WNNX, WNVE, WPBZ, WPLA, WQBK, WRAX, WRXQ, WRXR
Light (Under 15): 22

MARVELOUS 3 848/173

Freak Of The Week (HIFI/Elektra/EEG)
Total Stations: 58/Chart Move: 35-29
Heavy (30+): 6 KNDD, KTOZ, KXRK, KZAZ, WHFS, WNNX
Medium (15-29): 25 KCXX, KFMA, KITS, KJEE, KLZR, KMYZ, KNRK, KPNT, KRAD, KROQ, KXPK, WARQ, WBCN, WEDG, WEQX, WFNX, WGRD, WMRO, WPLA, WPLT, WPLY, WRAX, WRXR, WRZX, WZAZ, XTRA
Light (Under 15): 27
New Airplay This Week: 7 KCXX, KDGE, KDRE, KNRK, WGRD, WKRL, WQBK

ZEBRAHEAD 674/-7

Get Back (Columbia)
Total Stations: 43/Chart Move: 34-32
Heavy (30+): 3 KDRE, KFTE, KROX
Medium (15-29): 18 KCXX, KFRR, KKND, KLZR, KNDD, KNRK, KRAD, WMRO, WNFZ, WNNX, WPBZ, WPLA, WQBK, WRXQ, WRZX, WXDX, WXNR, WXZZ
Light (Under 15): 22

VAST 579/60

Touched (Elektra/EEG)
Total Stations: 32/Chart Move: 39-35
Heavy (30+): 2 CIMX, KNDD
Medium (15-29): 19 KCXX, KFTE, KITS, KJEE, KKND, KLYY, KLZR, KMYZ, KRAD, KROQ, KTCL, KWOD, WFNX, WKQX, WKRL, WLRS, WNNX, WRXQ, WRZX
Light (Under 15): 11
New Airplay This Week: 2 KDRE, WMRO

KHALEEL 530/47

No Mercy (Hollywood)
Total Stations: 45/Chart Move: 40-36
Heavy (30+): 0
Medium (15-29): 20 KAEP, KDRE, KJEE, KKDM, KLYY, KLZR, KTOZ, WARQ, WEND, WENZ, WEQX, WHFS, WNNX, WPLY, WRAX, WWCD, WXDX, WXEG, WZAZ, XTRA
Light (Under 15): 25

COLLECTIVE SOUL 524/421

Heavy (Atlantic)
Total Stations: 46/Chart Move: Debut 37
Heavy (30+): 1 WNNX
Medium (15-29): 16 KDGE, KFMA, KFTE, KITS, KKND, KNDD, KPNT, KWOD, KXRK, WENZ, WGRD, WKRO, WMRO, WXDX, WXNR, WXZZ
Light (Under 15): 29
New Airplay This Week: 25 CFNY, KDGE, KFTE, KITS, KJEE, KNRK, KPNT, KTBZ, KXRK, WBRU, WEND, WENZ, WEQX, WGRD, WHFS, WKRO, WMRO, WNFZ, WPLA, WRXQ, WRXR, WXDX, WXNR, WXZZ, WZAZ

LIMP BIZKIT 486/61

Faith (Flip/Interscope)
Total Stations: 48/Chart Move: Debut 38
Heavy (30+): 1 KXTE
Medium (15-29): 14 CIMX, KDGE, KEDJ, KFRR, KKND, KLZR, KMYZ, WAVF, WENZ, WKRL, WMRO, WNFZ, WPBZ, WXDG
Light (Under 15): 33
New Airplay This Week: 2 WPLY, WWCD

EVERCLEAR 441/279

One Hit Wonder (Capitol)
Total Stations: 50/Chart Move: Debut 39
Heavy (30+): 1 KWOD

Medium (15-29): 9 KJEE, KKND, KLZR, KXRK, WBRU, WBTZ, WFNX, WGRD, WXRK
Light (Under 15): 40
New Airplay This Week: 18 CFNY, KEDJ, KFTE, KKND, KLZR, KPNT, KRAD, WARQ, WBRU, WBTZ, WEND, WENZ, WKDF, WKRO, WLRS, WPLA, WRAX, WRXR

METALLICA 432/9

Turn The Page (Elektra/EEG)
Total Stations: 21/Chart Move: Re-Entry 40
Heavy (30+): 7 KFTE, WAVF, WBCN, WJBX, WNFZ, WQBK, WXRK
Medium (15-29): 6 KMYZ, WENZ, WKRL, WLRS, WNVE, WXNR
Light (Under 15): 8

CHART BOUND

Total Plays/Gain

FATBOY SLIM 422/136

Praise You (Skint/Astralwerks)
Total Stations: 44
Heavy (30+): 3 KJEE, KTCL, KWOD
Medium (15-29): 11 KFMA, KITS, KLYY, KNDD, KROQ, WBCN, WBTZ, WHFS, WKQX, WPLA, XTRA
Light (Under 15): 30
New Airplay This Week: 7 CFNY, KDGE, KPNT, WBRU, WKRL, WNNX, WPLA

THE OFFSPRING 418/129

Why Don't You Get A Job? (Columbia)
Total Stations: 31
Heavy (30+): 4 KEDJ, KITS, KNDD, KROQ
Medium (15-29): 8 KJEE, KKND, KWOD, WFNX, WHFS, WNFZ, WNNX, WXRK
Light (Under 15): 19
New Airplay This Week: 7 KDGE, KFMA, KKND, KXTE, WBTZ, WFNX, WNNX

MARILYN MANSON 384/70

I Don't Like The Drugs (But The Drugs Like Me) (Nothing/Interscope)
Total Stations: 35
Heavy (30+): 0
Medium (15-29): 11 KFMA, KFTE, KKND, KNDD, KROX, KXPK, KXTE, WAVF, WBRU, WKRL, WNFZ
Light (Under 15): 24
New Airplay This Week: 8 KFRR, KKDM, WAVF, WJBX, WKRL, WKRO, WRZX, WXDG

TOMMY HENRIKSEN 346/30

I See The Sun (Capitol)
Total Stations: 24
Heavy (30+): 3 KDRE, WEND, WKDF
Medium (15-29): 8 KKDM, KLZR, KTBZ, WARQ, WENZ, WPLA, WRAX, WRXQ
Light (Under 15): 13
New Airplay This Week: 1 WEQX

THE LIVING END 323/158

Prisoner Of Society (Reprise)
Total Stations: 44
Heavy (30+): 0
Medium (15-29): 5 KITS, KJEE, KNDD, WBTZ, WXRK
Light (Under 15): 39
New Airplay This Week: 14 CFNY, KDRE, KEDJ, KFTE, KKND, KRAD, KWOD, WBTZ, WENZ, WFNX, WKRL, WLRS, WXDX, WXZZ

COLLECTIVE SOUL 241/81

Run (Hollywood/Atlantic)
Total Stations: 16
Heavy (30+): 1 WRAX
Medium (15-29): 7 KAEP, KKND, KZAZ, WBRU, WJBX, WNNX, WRXR
Light (Under 15): 8
New Airplay This Week: 6 CFNY, KFTE, KLYY, KROQ, WBRU, WZAZ

MATCHBOX 20 239/11

Back 2 Good (Lava/Atlantic)
Total Stations: 15
Heavy (30+): 2 KTBZ, KTOZ
Medium (15-29): 6 KAEP, KZON, WGRD, WPLT, WPLY, WXZZ
Light (Under 15): 7
New Airplay This Week: 1 WGRD

TIN STAR 237/81

Head (V2)
Total Stations: 32
Heavy (30+): 0

Medium (15-29): 6 KKDM, KROX, KWOD, WBCN, WHFS, WRZX
Light (Under 15): 26
New Airplay This Week: 4 KDGE, KKND, WLRS, WRZX

GODSMACK 229/3

Whatever (Republic/Universal)
Total Stations: 14
Heavy (30+): 4 KXTE, WAVF, WLRS, WNFZ
Medium (15-29): 2 KFTE, WKRL
Light (Under 15): 8
New Airplay This Week: 1 KRAD

R.E.M. 208/69

Lotus (Warner Bros.)
Total Stations: 18
Heavy (30+): 0
Medium (15-29): 9 CFNY, WBTZ, WEDG, WEND, WEQX, WMRO, WNNX, WPLT, WWCD
Light (Under 15): 9
New Airplay This Week: 3 KLYY, WEQX, WMRO

DIG 188/23

Live In Sound (Radiouniverse/Universal)
Total Stations: 23
Heavy (30+): 0
Medium (15-29): 7 KDRE, KKND, KLZR, KRAD, WMRO, WRXQ, WWCD
Light (Under 15): 16
New Airplay This Week: 2 KTCL, WPLA

SEMISONIC 176/62

Secret Smile (MCA)
Total Stations: 29
Heavy (30+): 0
Medium (15-29): 7 KENZ, KFTE, KWOD, KXRK, KZAZ, WEND, WPLT
Light (Under 15): 22
New Airplay This Week: 4 KFTE, KXRK, WKDF, WZAZ

DOVETAIL JOINT 171/49

Level On The Inside (Aware/C2/Columbia)
Total Stations: 25
Heavy (30+): 0
Medium (15-29): 6 KCXX, KPNT, KROX, WRXR, WXDG, WXDX
Light (Under 15): 19
New Airplay This Week: 2 KCXX, WQBK

★ BARE JR. 146/108

You Blew Me Off (Immortal/Epic)
Total Stations: 30
Heavy (30+): 0
Medium (15-29): 2 KROX, WKRL
Light (Under 15): 28
New Airplay This Week: 9 KDRE, KEDJ, KFTE, KKND, KRAD, KROX, KWOD, WRAX, WXZZ

KORN 145/48

Freak On A Leash (Immortal/Epic)
Total Stations: 34
Heavy (30+): 1 KXTE
Medium (15-29): 3 KNDD, KROQ, WXRK
Light (Under 15): 30
New Airplay This Week: 1 KROX

EVERLAST 141/62

Ends (Tommy Boy)
Total Stations: 11
Heavy (30+): 0
Medium (15-29): 5 KITS, KNDD, KWOD, WXRK, XTRA
Light (Under 15): 6
New Airplay This Week: 4 KLYY, KWOD, WHFS, WXRK

ROB ZOMBIE 139/36

Living Dead Girl (Geffen)
Total Stations: 19
Heavy (30+): 1 KXTE
Medium (15-29): 2 KFRR, WXRK
Light (Under 15): 16
New Airplay This Week: 2 WFNX, WKRO

SARAH MCLACHLAN 130/7

Angel (Warner Sunset/Reprise)
Total Stations: 5
Heavy (30+): 2 KTOZ, WPLT
Medium (15-29): 1 KKDM
Light (Under 15): 2

BLONDIE 129/76

Marla (Beyond Music)
Total Stations: 22
Heavy (30+): 0

Medium (15-29): 2 WEND, WNNX
Light (Under 15): 21
New Airplay This Week: 4 WBCN, WENZ, WEQX, WNNX

DIAL-7 126/21

All I Want (Warner Bros.)
Total Stations: 18
Heavy (30+): 0
Medium (15-29): 3 KFTE, KLZR, WXZZ
Light (Under 15): 15

GOO GOO DOLLS 126/43

Dizzy (Warner Bros.)
Total Stations: 17
Heavy (30+): 0
Medium (15-29): 2 WEDG, WXDX
Light (Under 15): 15
New Airplay This Week: 3 KNRK, WEQX, WLRS

PROPELLERHEADS 99/16

Velvet Pants (DreamWorks/Geffen)
Total Stations: 46
Heavy (30+): 0
Medium (15-29): 0
Light (Under 15): 46

STABBING WESTWARD 96/44

Haunting Me (Columbia)
Total Stations: 17
Heavy (30+): 0
Medium (15-29): 4 KNDD, KXTE, WKRO, WNFZ
Light (Under 15): 13
New Airplay This Week: 2 KNDD, WXDX

BEASTIE BOYS 83/17

The Negotiation Limerick File (Grand Royal/Capitol)
Total Stations: 6
Heavy (30+): 1 KROQ
Medium (15-29): 1 KITS
Light (Under 15): 4

CRACKER 75/29

The World Is Mine (Virgin)
Total Stations: 16
Heavy (30+): 0
Medium (15-29): 2 WBRU, WFNX
Light (Under 15): 14

BAZ LUHRMANN 71/-1

Everybody's Free (Capitol)
Total Stations: 4
Heavy (30+): 1 KNDD
Medium (15-29): 2 KNRK, WEQX
Light (Under 15): 1

★ FUN LOVIN' CRIMALS 70/20

Korean Bodega (Virgin)
Total Stations: 27
Heavy (30+): 0
Medium (15-29): 1 CFNY
Light (Under 15): 26

★ THE FLYS 70/44

She's So Huge (Delicious Vinyl/Trauma)
Total Stations: 10
Heavy (30+): 0
Medium (15-29): 2 KNDD, KNRK
Light (Under 15): 8
New Airplay This Week: 3 KNDD, KXRK, WKRL

THE TRAGICALLY HIP 67/7

Fireworks (Sire)
Total Stations: 3
Heavy (30+): 1 CFNY
Medium (15-29): 1 WEDG
Light (Under 15): 1

★ NEVE 66/20

It's Over Now (Columbia)
Total Stations: 8
Heavy (30+): 0
Medium (15-29): 2 KLYY, KROQ
Light (Under 15): 6
New Airplay This Week: 1 KITS

★ SEBADOH 64/20

Flame (Sire)
Total Stations: 16
Heavy (30+): 0
Medium (15-29): 1 KNDD
Light (Under 15): 15

★ CAKE 56/24

Sheep Go To Heaven (Capricorn/Mercury)
Total Stations: 2
Heavy (30+): 0
Medium (15-29): 2 KWOD, WNNX
Light (Under 15): 1
New Airplay This Week: 1 WNNX

★ Initial impact: records appearing on this page for the first time.

Station's changing top songs with increasing speed... Station's program chart does not include video play. Markets listed on order of population.

BETTER THAN EZRA

Table with columns: Station, Song, Position, Change, and Total Plays/Gain. Includes stations like MTV, WKRR, KLYY, etc.

THE CARDIGANS

Table with columns: Station, Song, Position, Change, and Total Plays/Gain. Includes stations like MTV, WKRR, KLYY, etc.

COLLECTIVE SOUL

Table with columns: Station, Song, Position, Change, and Total Plays/Gain. Includes stations like New York, L.A., Chicago, etc.

COLLECTIVE SOUL

Table with columns: Station, Song, Position, Change, and Total Plays/Gain. Includes stations like New York, L.A., Chicago, etc.

CREED

Table with columns: Station, Song, Position, Change, and Total Plays/Gain. Includes stations like New York, L.A., Chicago, etc.

DAVE MATTHEWS BAND

Table with columns: Station, Song, Position, Change, and Total Plays/Gain. Includes stations like New York, L.A., Chicago, etc.

EVE 6

Table with columns: Station, Song, Position, Change, and Total Plays/Gain. Includes stations like New York, L.A., Chicago, etc.

EVERCLEAR

Table with columns: Station, Song, Position, Change, and Total Plays/Gain. Includes stations like New York, L.A., Chicago, etc.

EVERLAST

Table with columns: Station, Song, Position, Change, and Total Plays/Gain. Includes stations like New York, L.A., Chicago, etc.

FATBOY SLIM

Table with columns: Station, Song, Position, Change, and Total Plays/Gain. Includes stations like New York, L.A., Chicago, etc.

GARBAGE

Table with columns: Station, Song, Position, Change, and Total Plays/Gain. Includes stations like New York, L.A., Chicago, etc.

GODSMACK

Table with columns: Station, Song, Position, Change, and Total Plays/Gain. Includes stations like New York, L.A., Chicago, etc.

TOMMY HENRIKSEN

Table with columns: Station, Song, Position, Change, and Total Plays/Gain. Includes stations like New York, L.A., Chicago, etc.

HOLE

Table with columns: Station, Song, Position, Change, and Total Plays/Gain. Includes stations like New York, L.A., Chicago, etc.

KHALEEL

Table with columns: Station, Song, Position, Change, and Total Plays/Gain. Includes stations like New York, L.A., Chicago, etc.

Plays are subject to change with increased spins this week. Total Plays/Gain does not include video plays. Markets listed in order of population.

LIMP BIZKIT 486/61 Faith (Flip/Interscope) Total Stations: 48 Chart Move: Debut 38

THE LIVING END 323/158 Prisoner Of Society (Reprise) Total Stations: 44

MARILYN MANSON 384/70 I Don't Like The Drugs (But The Drugs Like Me) (Nothing/Interscope) Total Stations: 35

MARVELOUS 3 848/173 Freak Of The Week (HiFi/Elektra/EEG) Total Stations: 58 Chart Move: 35-29

MATCHBOX 20 239/11 Back 2 Good (Lava/Atlantic) Total Stations: 15

METALLICA 432/9 Turn The Page (Elektra/EEG) Total Stations: 21 Chart Move: Re-Entry 40

ALANIS MORISSETTE 1202/24 Jolning You (Maverick/Reprise) Total Stations: 58 Chart Move: 18-19

THE OFFSPRING 418/129 Why Don't You Get A Job (Columbia) Total Stations: 31

ORGY 1266/144 Blue Monday (Elementree/Reprise) Total Stations: 65 Chart Move: 21-17

PLACEBO 1183/20 Pure Morning (Hut/Virgin) Total Stations: 61 Chart Move: 20-20

R.E.M. 208/69 Lotus (Warner Bros.) Total Stations: 18

REMY ZERO 951/62 Prophecy (DGC/Geffen) Total Stations: 58 Chart Move: 29-28

SUGAR RAY 2271/158 Every Morning (Lava/Atlantic) Total Stations: 73 Chart Move: 4-4

TIN STAR 237/81 Head (V2) Total Stations: 32

VAST 579/60 Touched (Elektra/EEG) Total Stations: 32 Chart Move: 39-35



POWER PLAYLISTS™

KFOG San Francisco
PD: Paul Marszalek
APD/MD: Bill Evans
415-817-5364
Susquehanna



	TW	LW		TW	LW	
1	Chris Isaak, Flyin'	22	22	1	Sugar Ray, Every Morning	
2	Sheryl Crow, There Goes The Neighborhood	19	23	2	Cake, Never There	
3	Seal, Human Beings	19	23	3	Jewel, Hands	
4	Jonny Lang, Still Ramin'	17	26	4	Goo Goo Dolls, Slide	
5	Brian Setzer Orchestra, This Cat's On A Barenaked Ladies, It's All Been Done	17	23	5	Fastball, Fire Escape	
6	U2, Sweetest Thing	17	20	6	Phish, Johnny Feelgood	
7	Dave Matthews Band, Crush	13	13	7	Soul Couplings, Circles	
8	Wes Cunningham, So It Goes	13	15	8	Susan Tedeschi, It Hurt So Bad	
9	New Radicals, You Get What You Give	13	13	9	The Tragically Hip, Poets	
10	Goo Goo Dolls, Slide	13	14	10	Lucinda Williams, Can't Let Go	
11	R.E.M., Daysleeper	12	24	11	Barenaked Ladies, It's All Been Done	
12	Lisa Loeb, All Day	11	13	12	Elliott Smith, Waltz #2	
13	Bonnie Raitt, One Belief Away	11	10	13	Eagle-Eye Cherry, Save Tonight	
14	Big Head Todd & The Monsters, It's Alright	11	14	14	Beck, Tropicalia	
15	Shawn Mullins, Lullaby	10	14	15	U2, Sweetest Thing	
16	Scott Thomas Band, Sad Girl	10	13	16	Hole, Malibu	
17	Bruce Hornsby, Great Divide	9	17	17	Grant Lee Buffalo, Testimony	
18	Natalie Merchant, Kind & Generous	9	9	18	Robbie Fulks, Let's Kill Saturday Night	
19	Susan Tedeschi, It Hurt So Bad	9	14	19	Dave Matthews Band, Crush	
20	B.B. King, Bad Case Of Love	8	7	20	Seal, Human Beings	
21	Kenny Wayne Shepherd, Blue On Black	8	7	21	Sinbad Loban, No Nerrmaid	
22	John Mellencamp, Your Life Is Now	8	14	22	Bruce Hornsby, Great Divide	
23	Eagle-Eye Cherry, Save Tonight	8	10	23	Jonny Lang, Still Ramin'	
24	R.E.M., Lotus	7	0	24	Sheryl Crow, There Goes The Neighborhood	
25	Rolling Stones, Saint Of Me	7	0	25	Blondie, Mania	
26	Phish, Birds Of A Feather	7	0	26	Phish, Birds Of A Feather	
27	John Mellencamp, I'm Not Running Anymore	7	0	27	The Smashing Pumpkins, Daphne Descends	
28	Pearl Jam, Wishlist	6	3	28	John Mellencamp, Break Me Off Some	
29	Eric Clapton, She's Gone	6	2	29	R.E.M., Lotus	
30				30		

WXRT Chicago
VP/Pgm: Norm Winer
MD: Patty Martin
773-777-1700
CBS



	TW	LW		TW	LW
1	Sugar Ray, Every Morning	16	7	1	Lucinda Williams, Can't Let Go
2	Cake, Never There	15	13	2	New Radicals, You Get What You Give
3	Jewel, Hands	15	14	3	Goo Goo Dolls, Slide
4	Goo Goo Dolls, Slide	14	13	4	Jonny Lang, Still Ramin'
5	Fastball, Fire Escape	14	11	5	Jewel, Hands
6	Phish, Johnny Feelgood	13	10	6	Mysteries Of Life, Downhill
7	Soul Couplings, Circles	13	15	7	Seal, Human Beings
8	Susan Tedeschi, It Hurt So Bad	13	10	8	Sheryl Crow, There Goes The Neighborhood
9	The Tragically Hip, Poets	12	8	9	Dave Matthews Band, Crush
10	Lenny Kravitz, Fly Away	12	11	10	Susan Tedeschi, You Need To Be With Me
11	Lucinda Williams, Can't Let Go	11	11	11	Dada, Goodbye
12	Barenaked Ladies, It's All Been Done	11	12	12	Sheryl Crow, My Favorite Mistake
13	Elliott Smith, Waltz #2	11	15	13	Chris Isaak, Please
14	Eagle-Eye Cherry, Save Tonight	10	13	14	R.E.M., Daysleeper
15	Beck, Tropicalia	10	15	15	U2, Sweetest Thing
16	U2, Sweetest Thing	10	8	16	Beck, Tropicalia
17	Hole, Malibu	10	17	17	Rolling Stones, Memory Motel
18	Grant Lee Buffalo, Testimony	10	12	18	U2, Everlasting Love
19	Robbie Fulks, Let's Kill Saturday Night	10	8	19	B.B. King, Bad Case Of Love
20	Dave Matthews Band, Crush	10	11	20	Barenaked Ladies, It's All Been Done
21	Seal, Human Beings	9	10	21	Eagle-Eye Cherry, Save Tonight
22	Sinbad Loban, No Nerrmaid	9	9	22	Goo Goo Dolls, Ins
23	Bruce Hornsby, Great Divide	8	10	23	Pearl Jam, Wishlist
24	Jonny Lang, Still Ramin'	8	8	24	Rusted Root, Magenta Radio
25	Sheryl Crow, There Goes The Neighborhood	8	10	25	Sheryl Crow, Your Life Is Now
26	Blondie, Mania	8	0	26	Melissa Ferrick, Everything I Need
27	Phish, Birds Of A Feather	7	11	27	Better Than Ezra, At The Stars
28	The Smashing Pumpkins, Daphne Descends	7	5	28	Bruce Hornsby, Great Divide
29	John Mellencamp, Break Me Off Some	7	9	29	Grant Lee Buffalo, Truly, Truly
30	R.E.M., Lotus	6	2	30	Great Big Sea, When I'm Up

WBOS Boston
PD: George Taylor Morris
MD: Cliff Nash
617-254-9267
Greater Media



	TW	LW		TW	LW
1	Lucinda Williams, Can't Let Go	23	23	1	Lucinda Williams, Can't Let Go
2	New Radicals, You Get What You Give	22	24	2	New Radicals, You Get What You Give
3	Goo Goo Dolls, Slide	22	23	3	Goo Goo Dolls, Slide
4	Jonny Lang, Still Ramin'	21	19	4	Jonny Lang, Still Ramin'
5	Jewel, Hands	21	25	5	Jewel, Hands
6	Mysteries Of Life, Downhill	20	21	6	Mysteries Of Life, Downhill
7	Seal, Human Beings	20	21	7	Seal, Human Beings
8	Sheryl Crow, There Goes The Neighborhood	19	14	8	Sheryl Crow, There Goes The Neighborhood
9	Dave Matthews Band, Crush	19	21	9	Dave Matthews Band, Crush
10	Susan Tedeschi, You Need To Be With Me	17	11	10	Susan Tedeschi, You Need To Be With Me
11	Dada, Goodbye	16	10	11	Dada, Goodbye
12	Sheryl Crow, My Favorite Mistake	15	20	12	Sheryl Crow, My Favorite Mistake
13	Chris Isaak, Please	14	23	13	Chris Isaak, Please
14	R.E.M., Daysleeper	13	23	14	R.E.M., Daysleeper
15	U2, Sweetest Thing	12	12	15	U2, Sweetest Thing
16	Beck, Tropicalia	12	11	16	Beck, Tropicalia
17	Rolling Stones, Memory Motel	12	11	17	Rolling Stones, Memory Motel
18	U2, Everlasting Love	12	12	18	U2, Everlasting Love
19	B.B. King, Bad Case Of Love	12	12	19	B.B. King, Bad Case Of Love
20	Barenaked Ladies, It's All Been Done	11	9	20	Barenaked Ladies, It's All Been Done
21	Eagle-Eye Cherry, Save Tonight	11	10	21	Eagle-Eye Cherry, Save Tonight
22	Goo Goo Dolls, Ins	9	9	22	Goo Goo Dolls, Ins
23	Pearl Jam, Wishlist	10	7	23	Pearl Jam, Wishlist
24	Rusted Root, Magenta Radio	10	11	24	Rusted Root, Magenta Radio
25	Sheryl Crow, Your Life Is Now	10	9	25	Sheryl Crow, Your Life Is Now
26	Melissa Ferrick, Everything I Need	10	7	26	Melissa Ferrick, Everything I Need
27	Better Than Ezra, At The Stars	9	11	27	Better Than Ezra, At The Stars
28	Bruce Hornsby, Great Divide	9	11	28	Bruce Hornsby, Great Divide
29	Grant Lee Buffalo, Truly, Truly	9	8	29	Grant Lee Buffalo, Truly, Truly
30	Great Big Sea, When I'm Up	9	7	30	Great Big Sea, When I'm Up

KTCZ Minneapolis
PD: Lauren MacLeash
MD: Mike Wolf
612-339-0000
Chancellor



	TW	LW		TW	LW
1	Dave Matthews Band, Crush	33	30	1	Lyle Lovett, Bears
2	New Radicals, You Get What You Give	31	30	2	U2, Sweetest Thing
3	Goo Goo Dolls, Slide	30	30	3	Jewel, Hands
4	Jonny Lang, Still Ramin'	28	25	4	Cake, Never There
5	R.E.M., Daysleeper	27	28	5	Seal, Human Beings
6	Train, Free	15	15	6	New Radicals, You Get What You Give
7	Lucinda Williams, Can't Let Go	15	15	7	Seb' Mo', Muddy Water
8	Sheryl Crow, There Goes The Neighborhood	15	15	8	Lucinda Williams, Can't Let Go
9	Barenaked Ladies, It's All Been Done	15	7	9	Delirium, Silence
10	Bruce Springsteen, I Wanna Be With You	14	13	10	Soul Couplings, Circles
11	Bruce Hornsby, Great Divide	14	15	11	Chris Isaak, Flyin'
12	B.B. King, Bad Case Of Love	14	14	12	Wes Cunningham, So It Goes
13	Chris Isaak, Flyin'	13	13	13	Everlast, What It's Like
14	Shawn Mullins, Summer	13	0	14	B.B. King, Bad Case Of Love
15	Matchbox 20, Back 2 Good	13	0	15	Susan Tedeschi, Rock Me Right
16	John Mellencamp, I'm Not Running Anymore	12	0	16	Sheryl Crow, There Goes The Neighborhood
17	Jewel, Hands	12	12	17	Hootie & The Blowfish, I Will Wait
18	U2, Sweetest Thing	11	9	18	Shawn Mullins, Lullaby
19	Rolling Stones, Memory Motel	10	9	19	Brad, The Day Begins
20	Big Head Todd & The Monsters, Tangerine	10	7	20	Eagle-Eye Cherry, Save Tonight
21	John Mellencamp, Your Life Is Now	9	30	21	Dave Matthews Band, Stay
22	Wes Cunningham, So It Goes	8	7	22	Susan Tedeschi, It Hurt So Bad
23	Seminole, Secret Smile	8	0	23	Barenaked Ladies, It's All Been Done
24	Brian Setzer Orchestra, This Cat's On A	8	8	24	Chris Isaak, Please
25	Adam Cohen, Tell Me Everything	8	7	25	Dave Matthews Band, Crush
26	Scott Thomas Band, Sad Girl	8	6	26	Bonnie Raitt, Split Of Love
27	The Cars, Just What I Needed	7	6	27	Sonia Dada, Zachary
28	Rod Stewart, Magenta May	7	7	28	Goo Goo Dolls, Slide
29	U2, Sweetest Thing	7	5	29	Sheryl Crow, My Favorite Mistake
30	Dirge Straits, Skatelay	7	5	30	Brian Setzer Orchestra, This Cat's On A

KBCO Denver
PD: Dave Benson
MD: Scott Arbough
303-444-5600
Jacor



	TW	LW		TW	LW
1	Lyle Lovett, Bears	31	23	1	Barenaked Ladies, It's All Been Done
2	U2, Sweetest Thing	30	28	2	Goo Goo Dolls, Slide
3	Jewel, Hands	30	25	3	Seal, Human Beings
4	Cake, Never There	29	25	4	Jewel, Hands
5	Seal, Human Beings	28	23	5	Dave Matthews Band, Crush
6	New Radicals, You Get What You Give	16	15	6	Susan Tedeschi, It Hurt So Bad
7	Seb' Mo', Muddy Water	15	12	7	Soul Couplings, Circles
8	Lucinda Williams, Can't Let Go	15	15	8	Lucinda Williams, Can't Let Go
9	Delirium, Silence	15	14	9	Delirium, Silence
10	Soul Couplings, Circles	14	14	10	Lyle Lovett, Bears
11	Chris Isaak, Flyin'	14	15	11	Wes Cunningham, So It Goes
12	Wes Cunningham, So It Goes	14	15	12	Everlast, What It's Like
13	Everlast, What It's Like	13	13	13	Sonia Dada, Zachary
14	B.B. King, Bad Case Of Love	13	15	14	R.E.M., Daysleeper
15	Susan Tedeschi, Rock Me Right	13	10	15	Sheryl Crow, There Goes The Neighborhood
16	Sheryl Crow, There Goes The Neighborhood	12	10	16	John Mellencamp, Your Life Is Now
17	Hootie & The Blowfish, I Will Wait	11	11	17	Chris Isaak, Flyin'
18	Shawn Mullins, Lullaby	11	13	18	Cake, Never There
19	Brad, The Day Begins	11	13	19	Beck, Tropicalia
20	Eagle-Eye Cherry, Save Tonight	11	13	20	Phish, Birds Of A Feather
21	Dave Matthews Band, Stay	11	11	21	Seb' Mo', I Was Wrong
22	Susan Tedeschi, It Hurt So Bad	11	11	22	U2, Sweetest Thing
23	Barenaked Ladies, It's All Been Done	11	11	23	New Radicals, You Get What You Give
24	Chris Isaak, Please	11	14	24	Alanis Morissette, Thank U
25	Dave Matthews Band, Crush	10	13	25	Sheryl Crow, My Favorite Mistake
26	Bonnie Raitt, Split Of Love	10	13	26	Scott Thomas Band, Black Valentine
27	Sonia Dada, Zachary	10	13	27	Bonnie Raitt, One Belief Away
28	Goo Goo Dolls, Slide	10	13	28	Natalie Merchant, Kind & Generous
29	Sheryl Crow, My Favorite Mistake	9	17	29	Shawn Mullins, Lullaby
30	Brian Setzer Orchestra, This Cat's On A	8	7	30	Sugar Ray, Every Morning

KACD Los Angeles
Acting PD: Dave Benson
Pgm. Mgr.: Keith Cunningham
MD: Nicole Sandler
310-451-1031
Jacor



	TW	LW		TW	LW
1	Barenaked Ladies, It's All Been Done	30	21	1	Barenaked Ladies, It's All Been Done
2	Goo Goo Dolls, Slide	27	26	2	Goo Goo Dolls, Slide
3	Seal, Human Beings	26	25	3	Seal, Human Beings
4	Jewel, Hands	26	28	4	Jewel, Hands
5	Dave Matthews Band, Crush	26	23	5	Dave Matthews Band, Crush
6	Susan Tedeschi, It Hurt So Bad	24	26	6	Susan Tedeschi, It Hurt So Bad
7	Soul Couplings, Circles	19	14	7	Soul Couplings, Circles
8	Lucinda Williams, Can't Let Go	18	16	8	Lucinda Williams, Can't Let Go
9	Delirium, Silence	15	16	9	Delirium, Silence
10	Lyle Lovett, Bears	14	14	10	Lyle Lovett, Bears
11	Wes Cunningham, So It Goes	16	15	11	Wes Cunningham, So It Goes
12	Everlast, What It's Like	16	16	12	Everlast, What It's Like
13	Sonia Dada, Zachary	16	15	13	Sonia Dada, Zachary
14	R.E.M., Daysleeper	15	14	14	R.E.M., Daysleeper
15	Sheryl Crow, There Goes The Neighborhood	15	16	15	Sheryl Crow, There Goes The Neighborhood
16	John Mellencamp, Your Life Is Now	15	13	16	John Mellencamp, Your Life Is Now
17	Chris Isaak, Flyin'	15	15	17	Chris Isaak, Flyin'
18	Cake, Never There	15	11	18	Cake, Never There
19	Beck, Tropicalia	15	11	19	Beck, Tropicalia
20	Phish, Birds Of A Feather	14	16	20	Phish, Birds Of A Feather
21	Seb' Mo', I Was Wrong	14	16	21	Seb' Mo', I Was Wrong
22	U2, Sweetest Thing	14	13	22	U2, Sweetest Thing
23	New Radicals, You Get What You Give	14	14	23	New Radicals, You Get What You Give
24	Alanis Morissette, Thank U	14	14	24	Alanis Morissette, Thank U
25	Sheryl Crow, My Favorite Mistake	14	12	25	Sheryl Crow, My Favorite Mistake
26	Scott Thomas Band, Black Valentine	14	12	26	Scott Thomas Band, Black Valentine
27	Bonnie Raitt, One Belief Away	14	13	27	Bonnie Raitt, One Belief Away
28	Natalie Merchant, Kind & Generous	14	12	28	Natalie Merchant, Kind & Generous
29	Shawn Mullins, Lullaby	13	17	29	Shawn Mullins, Lullaby
30	Sugar Ray, Every Morning	13	12	30	Sugar Ray, Every Morning

WHPT Tampa
PD: Chuck Beck
MD: Kurt Schreiner
813-577-7131
Clear Channel



	TW	LW		TW	LW
1	Goo Goo Dolls, Ins	28	33	1	Dave Matthews Band, Crush
2	Jewel, Hands	21	34	2	Susan Tedeschi, It Hurt So Bad
3	Edwin McCain, I'll Be	19	34	3	R.E.M., Daysleeper
4	Shawn Mullins, Lullaby	19	9	4	Goo Goo Dolls, Slide
5	Eagle-Eye Cherry, Save Tonight	18	12	5	Sheryl Crow, My Favorite Mistake
6	Natalie Merchant, Kind & Generous	18	33	6	Seal, Human Beings
7	Sheryl Crow, My Favorite Mistake	17	10	7	Shawn Mullins, Lullaby
8	Matchbox 20, Back 2 Good	16	32	8	Edwin McCain, I'll Be
9	Matchbox 20, 3 AM	16	7	9	Jonny Lang, Still Ramin'
10	Sarah McLachlan, Angel	16	7	10	Natalie Imbruglia, Torn
11	Matchbox 20, Real World	1			



COMBINED ROCK AUDIENCE										AIRPLAY BY FORMAT									
TW	LW	WKS	TITLE (IMPRINT/PROMOTION LABEL)	ARTIST	THIS WEEK			LAST WEEK			MAINSTREAM			MODERN			TRIPLE-A		
					Audience (millions)	Detections No.	Rank	Audience (millions)	Detections No.	Rank	Audience (millions)	Detections No.	Rank	Audience (millions)	Detections No.	Rank	Audience (millions)	Detections No.	Rank
1	1	21	FLY AWAY (VIRGIN)	LENNY KRAVITZ	29.9713	4515	1	31.2280	4587	1	13.4566	2096	2	15.8888	2295	3	0.6259	124	—
2	2	13	WHAT IT'S LIKE (TOMMY BOY)	EVERLAST	28.2358	4395	2	26.7311	4149	2	8.6474	1605	4	8.8229	2630	1	0.7655	160	17
3	3	18	SLIDE (WARNER BROS.)	GOO GOO DOLLS	21.9730	3597	3	21.9305	3648	3	9.1452	1484	5	10.1132	1724	7	2.7146	389	1
4	5	15	PRETTY FLY (FOR A WHITE GUY) (COLUMBIA)	THE OFFSPRING	18.6397	3124	4	18.6431	3205	4	5.9809	1286	7	12.4726	1773	5	0.1862	65	—
5	4	21	CELEBRITY SKIN (DGC/GEFFEN)	HOLE	18.3422	2608	8	19.0365	2727	8	6.7098	1178	11	11.4462	1379	11	0.1862	51	—
6	9	7	EVERY MORNING (LAVA/ATLANTIC)	SUGAR RAY	17.6351	2516	10	16.1248	2291	9	1.1143	122	—	15.6343	2271	4	0.8865	123	—
7	7	17	NEVER THERE (CAPRICORN/MERCURY)	CAKE	17.2565	2720	7	17.6916	2737	7	1.2762	290	—	14.9123	2297	2	1.0680	133	—
8	6	10	TURN THE PAGE (ELEKTRA/EEG)	METALLICA	17.1272	2831	6	17.9974	2808	6	14.1118	2349	1	2.8627	432	40	0.1527	50	—
9	8	22	GOT YOU (WHERE I WANT YOU) (DELICIOUS VINYL/TRAUMA)	THE FLYS	16.0381	2964	5	16.5415	2980	5	5.6440	1178	10	10.2367	1728	6	0.1574	58	—
10	10	35	INSIDE OUT (RCA)	EVE 6	15.3501	2112	11	15.3201	2230	11	5.6914	796	19	9.5309	1280	16	0.1278	36	—
11	13	5	ONE (WIND-UP)	CREED	14.5897	2595	9	13.3301	2239	10	7.2073	1480	6	7.3824	1115	21	—	—	—
12	11	15	SWEETEST THING (ISLAND)	U2	14.0673	1865	17	14.4438	1990	15	1.9181	211	—	10.0796	1379	12	2.0696	275	7
13	12	16	DRAGULA (GEFFEN)	ROB ZOMBIE	12.3383	1873	16	13.5490	2009	13	7.4823	1206	9	4.8560	667	33	—	—	—
14	15	6	MALIBU (DGC/GEFFEN)	HOLE	12.1930	1746	18	11.8714	1579	22	0.3269	92	—	11.6102	1618	8	0.2559	36	—
15	18	10	KICKIN' MY HEART AROUND (AMERICAN/COLUMBIA)	THE BLACK CROWES	11.5552	1944	15	10.9508	1905	16	11.2005	1885	3	0.2533	17	—	0.0964	42	—
16	16	11	YOU GET WHAT YOU GIVE (MCA)	NEW RADICALS	11.1886	2037	13	11.8333	2014	12	0.9771	136	—	7.8410	1527	9	2.3705	374	2
17	17	26	FATHER OF MINE (CAPITOL)	EVERCLEAR	10.9799	1590	22	11.3054	1646	20	1.2908	204	—	9.4939	1319	15	0.1952	67	—
18	14	30	WHAT'S THIS LIFE FOR (WIND-UP)	CREED	10.6605	1598	21	12.4543	1752	17	6.9010	1041	14	3.6750	528	—	0.0845	29	—
19	25	4	LEECH (RCA)	EVE 6	10.5777	2042	12	8.8277	1750	18	3.1077	683	23	7.4279	1343	13	0.0421	16	—
20	21	12	STILL RAININ' (A&M)	JONNY LANG	9.5943	1437	28	9.5665	1424	27	7.9775	1235	8	—	—	—	1.6168	202	13
21	20	45	SHIMMER (550 MUSIC/ERG)	FUEL	9.3175	1362	31	9.6778	1395	29	2.1614	363	—	7.0208	957	—	0.1353	42	—
22	19	24	SAVE TONIGHT (WORK/ERG)	EAGLE-EYE CHERRY	9.2461	1492	24	10.5918	1595	21	0.9805	112	—	6.5706	1162	—	1.6950	218	11
23	28	9	SPECIAL (ALMO SOUNDS/INTERSCOPE)	GARBAGE	9.2046	1427	29	8.5230	1360	30	0.0088	3	—	8.8589	1330	14	0.3369	94	—
24	32	9	CRUSH (RCA)	DAVE MATTHEWS BAND	8.6620	1332	32	7.7477	1203	37	0.0401	11	—	6.2450	1004	25	2.3769	317	4
25	22	11	BITTERSWEET (550 MUSIC/ERG)	FUEL	8.6418	2004	14	9.0062	1998	14	4.3703	943	16	4.2715	1061	24	—	—	—
26	23	16	GOT THE LIFE (IMMORTAL/EPIC)	KORN	8.4120	1505	23	8.8975	1531	23	2.4940	542	25	5.9178	962	27	0.0002	1	—
27	NEW		HEAVY (ATLANTIC)	COLLECTIVE SOUL	8.4072	1298	34	2.5982	353	158	4.6395	768	20	3.7240	524	37	0.0437	6	—
28	29	5	BLUE MONDAY (ELEMENTREE/REPRISE)	ORGY	8.3073	1607	20	8.0218	1428	25	1.0484	341	39	7.2593	1266	17	—	—	—
29	24	13	CIRCLES (SLASH/WARNER BROS.)	SOUL COUGHING	8.2064	1744	19	8.8650	1742	19	0.5731	186	—	6.8056	1447	10	0.8277	111	—
30	27	9	ELDERLY WOMAN BEHIND THE COUNTER IN A SMALL TOWN (LIVE) (EPIC)	PEARL JAM	7.4681	1261	37	8.5834	1336	32	2.5815	502	28	4.8092	731	30	0.0774	28	—
31	26	69	MY OWN PRISON (WIND-UP)	CREED	7.3369	1007	45	8.7912	1121	42	3.6485	499	—	3.6398	490	—	0.0486	18	—
32	35	4	MY FAVOURITE GAME (STOCKHOLM/MERCURY)	THE CARDIGANS	7.3128	1038	44	7.4418	972	48	—	—	—	7.2250	997	26	0.0878	41	—
33	30	72	TOUCH, PEEL AND STAND (OUTPOST/GEFFEN)	DAYS OF THE NEW	7.2976	1040	43	7.9641	1128	41	4.8697	645	—	2.4002	385	—	0.0277	10	—
34	37	10	IT'S ALL BEEN DONE (REPRISE)	BARENAKED LADIES	7.0748	1438	27	7.2110	1403	28	0.4734	69	—	4.6933	1087	22	1.9081	282	6
35	33	4	PURE MORNING (HUT/VIRGIN)	PLACEBO	6.8220	1476	25	7.6231	1426	26	0.8441	261	—	5.8717	1183	20	0.1062	32	—
36	34	4	ANOTHER BRICK IN THE WALL (PART 2) (COLUMBIA)	CLASS OF '99	6.6908	1414	30	7.6701	1442	24	3.8031	823	18	2.8803	590	34	0.0074	1	—
37	36	59	TIME OF YOUR LIFE (GOOD RIDDANCE) (REPRISE)	GREEN DAY	6.6740	901	50	7.2538	980	47	1.7057	241	—	4.5706	582	—	0.3977	78	—
38	RE-ENTRY		AT THE STARS (ELEKTRA/EEG)	BETTER THAN EZRA	6.5363	1297	35	6.2073	1288	33	0.0440	17	—	6.2457	1211	18	0.2466	69	—
39	39	10	BODY MOVIN' (GRAND ROYAL/CAPITOL)	BEASTIE BOYS	6.5170	1144	40	6.8696	1149	39	0.1421	60	—	6.3731	1083	23	0.0018	1	—
40	RE-ENTRY		PROPHECY (DGC/GEFFEN)	REMY ZERO	6.5133	1443	26	6.4139	1344	31	1.9680	483	29	4.5131	951	28	0.0322	9	—

Records showing an increase in audience over the previous week, regardless of chart movement. Rankings broken down by mainstream, modern, and triple-A formats (on right side of this page) correspond to charts printed in this week's Monitor and therefore rankings do not exist for re-entries and records below No. 40 (No. 20 for triple-A). Audience computed by cross-referencing exact times of airplay with Arbitron listener data. ©1999, Billboard/BPI Communications.

STILL
THE TRUTH WILL SET YOU FREE.

AIRPLAY
Monitor
— We Listen To Reality —

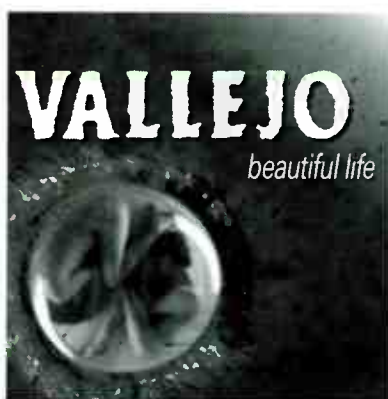


Compiled from a national sample of airplay supplied by Broadcast Data Systems' Radio Track service to Rock Airplay Monitor. 112 mainstream rock and 74 modern rock stations are electronically monitored 24 hours a day, 7 days a week. Songs are ranked by number of detections. © 1999, Broadcast Data Systems.

THIS WEEK	LAST WEEK	WKS. ON CHART	MAINSTREAM		DETECTIONS		
			TITLE/IMPRINT/PROMOTION LABEL	ARTIST	TW	LW	
			★★★★ NO. 1 ★★★★★				
①	1	10	TURN THE PAGE ELEKTRA/EEG	METALLICA	2349	2339	
2	2	28	FLY AWAY VIRGIN	LENNY KRAVITZ	2096	2105	
③	3	10	KICKIN' MY HEART AROUND AMERICAN/COLUMBIA	THE BLACK CROWES	1885	1859	
④	5	10	WHAT IT'S LIKE TOMMY BOY	EVERLAST	1605	1427	
5	4	18	SLIDE WARNER BROS.	GOO GOO DOLLS	1484	1505	
⑥	7	6	ONE WIND-UP	CREED	1480	1285	
⑦	8	15	PRETTY FLY (FOR A WHITE GUY) COLUMBIA	THE OFFSPRING	1286	1281	
⑧	10	17	STILL RAININ' A&M	JONNY LANG	1235	1233	
9	6	23	DRAGULA GEFFEN	ROB ZOMBIE	1206	1308	
⑩	12	20	GOT YOU (WHERE I WANT YOU) DELICIOUS VINYL/TRAUMA	THE FLYS	1178	1140	
11	11	20	CELEBRITY SKIN DGC/GEFFEN	HOLE	1178	1196	
⑫	14	10	EVERYTHING IS BROKEN REVOLUTION/REPRISE	KENNY WAYNE SHEPHERD BAND	1160	1065	
13	9	15	PSYCHO MAN EPIC	BLACK SABBATH	1120	1255	
14	13	32	WHAT'S THIS LIFE FOR WIND-UP	CREED	1041	1120	
⑮	15	14	WHATEVER REPUBLIC/UNIVERSAL	GODSMACK	1038	934	
⑯	16	16	BITTERSWEET 550 MUSIC/ERG	FUEL	943	925	
⑰	19	9	FREE AWARE/COLUMBIA	TRAIN	885	810	
18	18	5	ANOTHER BRICK IN THE WALL (PART 2) COLUMBIA	CLASS OF '99	823	825	
19	17	26	INSIDE OUT RCA	EVE 6	796	857	
⑳	NEW▶		HEAVY ATLANTIC	COLLECTIVE SOUL	768	250	
㉑	20	13	POWERTRIP A&M	MONSTER MAGNET	721	673	
㉒	21	17	SUREFIRE (NEVER ENOUGH) RESTLESS	ECONOLINE CRUSH	701	661	
㉓	25	6	LEECH RCA	EVE 6	683	556	
㉔	22	6	YOU WANTED THE BEST MERCURY	KISS	624	584	
㉕	26	7	SUPER BREAKDOWN SURFDG/HOLLYWOOD	SPRUNG MONKEY	601	518	
26	24	23	GOT THE LIFE IMMORTAL/EPIC	KORN	542	563	
㉗	28	4	NOW THAT YOU'RE GONE PACHYDERM	INDIGENOUS	506	467	
28	23	9	ELDERLY WOMAN BEHIND THE COUNTER IN A SMALL TOWN (LIVE) EPIC	PEARL JAM	502	568	
㉙	30	5	PROPHECY DGC/GEFFEN	REMY ZERO	483	445	
㉚	NEW▶		WHISKEY IN THE JAR ELEKTRA/EEG	METALLICA	476	215	
31	27	19	SOFT CAPITOL	SECOND COMING	452	498	
㉛	31	8	I AM THE BULLGOD TOP DOG/LAVA/ATLANTIC	KID ROCK	444	432	
㉜	39	2	I DON'T LIKE THE DRUGS (BUT THE DRUGS LIKE ME) NOTHING/INTERSCOPE	MARILYN MANSON	407	311	
34	29	21	PSYCHO CIRCUS MERCURY	KISS	387	454	
35	34	8	BITCH TVT	SEVENDUST	370	372	
㉞	38	4	FAITH FLIP/INTERSCOPE	LIMP BIZKIT	366	327	
37	32	8	GIMME SHELTER (LIVE) VIRGIN	THE ROLLING STONES	357	404	
38	33	15	10,000 HORSES MAVERICK/WARNER BROS.	CANDLEBOX	344	385	
㉟	NEW▶		BLUE MONDAY ELEMENTREE/REPRISE	ORGY	341	305	
40	35	8	EVERY LITTLE THING COUNTS EARACHE/TRAUMA	JANUS STARK	333	346	

Records showing an increase in detections over the previous week, regardless of chart movement. A record that has been on either chart for more than 20 weeks will not receive a bullet, even if it registers an increase in detections. Airpower awarded to those records that attain 800 detections (mainstream) or 1,100 (modern) for the first time. If two records are tied in number of plays, the record being played on more stations is placed first. Records below the top 20 are removed from the chart after 26 weeks.

THIS WEEK	LAST WEEK	WKS. ON CHART	MODERN		DETECTIONS		
			TITLE/IMPRINT/PROMOTION LABEL	ARTIST	TW	LW	
			★★★★ NO. 1 ★★★★★				
①	1	16	WHAT IT'S LIKE TOMMY BOY	EVERLAST	2630	2557	
2	3	18	NEVER THERE CAPRICORN/MERCURY	CAKE	2297	2310	
3	2	21	FLY AWAY VIRGIN	LENNY KRAVITZ	2295	2354	
④	4	7	EVERY MORNING LAVA/ATLANTIC	SUGAR RAY	2271	2113	
5	5	15	PRETTY FLY (FOR A WHITE GUY) COLUMBIA	THE OFFSPRING	1773	1835	
6	6	23	GOT YOU (WHERE I WANT YOU) DELICIOUS VINYL/TRAUMA	THE FLYS	1728	1789	
7	7	19	SLIDE WARNER BROS.	GOO GOO DOLLS	1724	1745	
⑧	11	7	MALIBU DGC/GEFFEN	HOLE	1618	1463	
9	8	13	YOU GET WHAT YOU GIVE MCA	NEW RADICALS	1527	1534	
10	10	19	CIRCLES SLASH/WARNER BROS.	SOUL COUGHING	1447	1457	
11	9	21	CELEBRITY SKIN DGC/GEFFEN	HOLE	1379	1461	
12	12	15	SWEETEST THING ISLAND	U2	1379	1462	
⑬	19	7	LEECH RCA	EVE 6	1343	1188	
⑭	15	13	SPECIAL ALMO SOUNDS/INTERSCOPE	GARBAGE	1330	1290	
15	13	27	FATHER OF MINE CAPITOL	EVERCLEAR	1319	1366	
16	14	39	INSIDE OUT RCA	EVE 6	1280	1328	
⑰	21	8	BLUE MONDAY ELEMENTREE/REPRISE	ORGY	1266	1122	
⑱	17	10	AT THE STARS ELEKTRA/EEG	BETTER THAN EZRA	1211	1206	
⑲	18	8	JOINING YOU MAVERICK/REPRISE	ALANIS MORISSETTE	1202	1178	
㉑	20	13	PURE MORNING HUT/VIRGIN	PLACEBO	1183	1163	
			★★★ AIRPOWER ★★★				
㉒	27	5	ONE WIND-UP	CREED	1115	954	
㉓	23	12	IT'S ALL BEEN DONE REPRISE	BARENAKED LADIES	1087	1075	
23	22	11	BODY MOVIN' GRAND ROYAL/CAPITOL	BEASTIE BOYS	1083	1089	
24	24	17	BITTERSWEET 550 MUSIC/ERG	FUEL	1061	1073	
㉕	30	13	CRUSH RCA	DAVE MATTHEWS BAND	1004	875	
㉖	28	9	MY FAVOURITE GAME STOCKHOLM/MERCURY	THE CARDIGANS	997	926	
27	26	23	GOT THE LIFE IMMORTAL/EPIC	KORN	962	966	
㉘	29	9	PROPHECY DGC/GEFFEN	REMY ZERO	951	889	
㉙	35	3	FREAK OF THE WEEK HIF/ELEKTRA/EEG	MARVELOUS 3	848	675	
30	33	9	ELDERLY WOMAN BEHIND THE COUNTER IN A SMALL TOWN (LIVE) EPIC	PEARL JAM	731	738	
31	31	21	LULLABY SMG/COLUMBIA	SHAWN MULLINS	710	753	
32	34	9	GET BACK COLUMBIA	ZEBRAHEAD	674	681	
33	32	16	DRAGULA GEFFEN	ROB ZOMBIE	667	701	
34	36	4	ANOTHER BRICK IN THE WALL (PART 2) COLUMBIA	CLASS OF '99	590	617	
㉚	39	3	TOUCHED ELEKTRA/EEG	VAST	579	519	
㉛	40	2	NO MERCY HOLLYWOOD	KHALEEL	530	483	
㉜	NEW▶		HEAVY ATLANTIC	COLLECTIVE SOUL	524	103	
㉝	NEW▶		FAITH FLIP/INTERSCOPE	LIMP BIZKIT	486	425	
㉞	NEW▶		ONE HIT WONDER CAPITOL	EVERCLEAR	441	162	
㉟	RE-ENTRY		TURN THE PAGE ELEKTRA/EEG	METALLICA	432	423	



VALLEJO

"Snake in the Grass"

Mixed by DJ Hurricane
from the album BEAUTIFUL LIFE

"This song has bit ME in the ass!! We put it on, and surprise! Instant phone reaction!"

-Gary Cee, WLIR

Already Snake Bitten:

KROX 24x
(#70 Album Sales in Market)

WRAX 17x

KWOD

WLIR

WDST

KQRX

KBRS

IMPACTING
ALTERNATIVE RADIO
1/19!!!!

Management: Eric Cohen

TVT Records
212.979.6410



Grammy
Nominee
Best Male
Rock Vocal
Performance

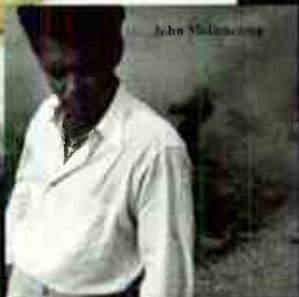
"I'm Not Running Anymore" John Mellencamp

from the critically-acclaimed new album

"★★★★"
Rolling Stone

"...the best and most
blistering artistic statement
of his long, complex career."
Billboard

"...not only rocks, but reflects
the honesty that is at the root
of Mellencamp's best music."
Boston Globe



Watch John Mellencamp on
Sessions At West 54th Street
the weekend of January 23.

Check local listings.

U.S. tour begins in May

Produced by John Mellencamp.
Management: HOFFMAN
ENTERTAINMENT INC.

www.mellencamp.com
www.columbiarecords.com

"Columbia" and  Reg. U.S. Pat. & Tm. Off.
Marca Registrada./© 1999 John Mellencamp.





GREAT RESEARCH = HUGE SPINS!!!

WBCN	40X	Rank	#3
99X	33X	Rank	#5
WPLY	41X	Rank	#3
WPLT	42X	Rank	#1
WXDG	30X	Rank	#4
KZMZ	32X	Rank	#12
Q101	22X	Rank	#13
WEND	44X	Rank	#5
WRAX	36X	Rank	#2

MODERN ROCK MONITOR 30 - (25)
1,004 SPINS/+ 129 SPINS

DAVE MATTHEWS BAND

CRUSH

The **New Single** From The Multi-Platinum Album *Before These Crowded Streets* ■ Produced by Steve Lillywhite ■ Mixed by Steve Lillywhite & Steve Harris ■ Management: Red Light ■ www.dmband.com

