

ROCK ■ AIRPLAY Monitor

• We Listen To Radio •

July 24, 1998

\$4.95

Volume 5 • No. 30

ROCK HIGHLIGHTS

MAINSTREAM

#1

DAYS OF THE NEW

The Down Town (OUTPOST/GEFFEN)

★★★ AIRPOWER ★★★

SEVEN MARY THREE • *Over Your Shoulder* (MAMMOTH/ATLANTIC)

GOING FOR AIRPLAY

BETTER THAN EZRA • *One More Murder* (ELEKTRA/EEG)

RANDALL BRAMBLETT • *Shining Birmingham* (CAPRICORN/MERCURY)

DEEP PURPLE • *Whatsername* (CMC INTERNATIONAL)

MATTHEW GOOD BAND • *Indestructible* (DOWNTOWN/MERCURY)

RUTH RUTH • *Condition* (RCA)

THE SMASHING PUMPKINS • *Perfect* (VIRGIN)

SWAMP BOOGIE QUEEN • *Help Is On The Way* (N2K ENCODED)

MODERN

#1

GOO GOO DOLLS

Iris (WARNER SUNSET/REPRISE)

★★★ AIRPOWER ★★★

NO RECORDS QUALIFIED FOR AIRPOWER THIS WEEK

GOING FOR AIRPLAY

BETTER THAN EZRA • *One More Murder* (ELEKTRA/EEG)

EDNASWAP • *Back On The Sun* (ISLAND)

PLASTISCENE • *Big Wheel* (MOJO/UNIVERSAL)

THE VERVE • *Sonnet* (VCI/HUT/VIRGIN)

TRIPLE A

#1

DAVE MATTHEWS BAND

Stay (Wasting Time) (RCA)

★★★ AIRPOWER ★★★

NO RECORDS QUALIFIED FOR AIRPOWER THIS WEEK

KROQ Bests All Comers In Monitor Radio Awards With Six Noms

by Marc Schiffman

With the arrival of the 1998 Billboard/Airplay Monitor Awards ballot in this issue, modern KROQ Los Angeles picks up the most nominations of any single station, with six entrants, while modern sister WBCN Boston is competing in five categories. On the rock side, overachievers include WRCX (Rock 103.5) Chicago and WRIF Detroit, each with nominations in five categories.

It's a CBS world in the modern rock nominations. The aforementioned KROQ's six nominations include major-market modern rock station of the year, PD of the year for Kevin Weatherly, MD of the year for Lisa Worden, promotion director of the year for Amy Stevens, and two entrants into the local air personality category: Tami Heide and Jed the Fish.

Meanwhile, WBCN is vying for station of the year, PD of the year for Oedipus, MD of the year for Steven Strick, promotion director of the year for Larry "Cha-Chi" Loprete, and Nik Carrier for local air personality. In other CBS news, modern WHFS Washington, D.C., picked up four nominations—sta-

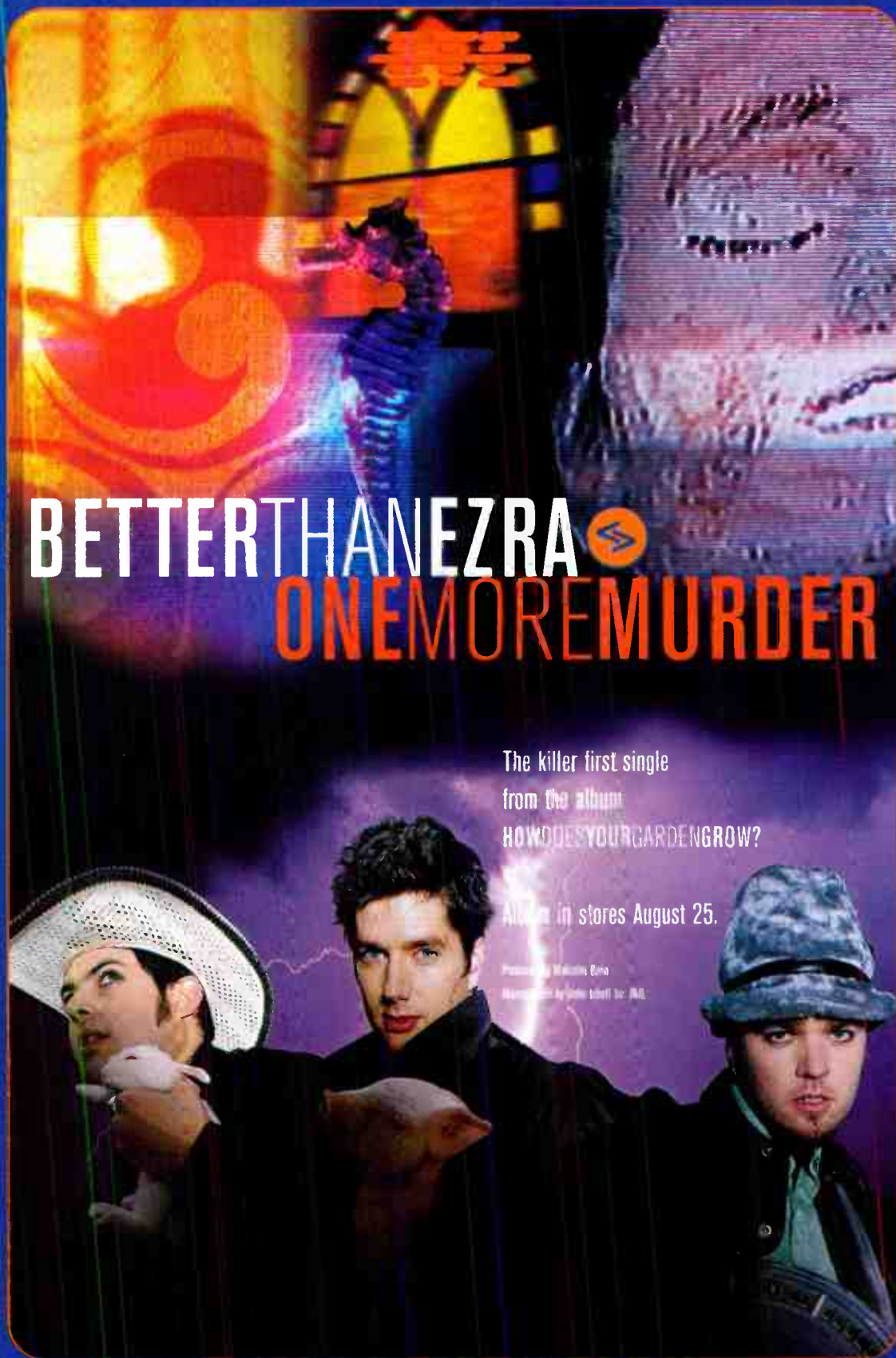
tion, PD for Robert Benjamin, promotion director for Mary Kay LeMay, and local air personality for Lou Brutus. The late KOMA San Jose, Calif., also picked up four nominations, for station, PD Jay Taylor, and local air personalities DJ With No Name and Shark. The

CBS modern contingent also includes KITS (Live 105) San Francisco and KXTE Las Vegas with two and WRRK (K-Rock) New York with one.

Outside of the CBS family, WNNX (99X) Atlanta is up for four awards, including station of the year, PD of the year for Leslie Fram, MD of the year for Sean Demery, and promotion director of the year for Jennifer Nech. KNRK Portland, Ore., also picked up four nominations in the secondary-market category, including station of the year, PD of the year for Mark Hamilton, promotion director of the year for Patty

Pastor, and local air personality of the year for Jayn. WRAX Birmingham, Ala., pulls a nomination hat trick in the modern rock secondary-market category, for station, PD Dave Rossi, and local air personality Beaner.

Continued on page 5



BETTER THAN EZRA ONE MORE MURDER

The killer first single
from the album
HOW DOES YOUR GARDEN GROW?

Album in stores August 25.

Produced by Michael Egan
Mastered by John Corbett for JAG

IMPACTING JULY 27!

On Elektra compact discs and cassettes. www.elektra.com www.betterthanezra.com
© 1998 Elektra Entertainment, a Division of Warner Communications Inc. A Time Warner Company.

New This Week At Rock Radio:

WRIF	KEGL	WJXQ	KNJY	WKZQ
WKIT	KAOI	WKLT		

On:

KRXQ	WMMR	KTXQ	KIOZ	KDKB
WXTB	KBPI	WXRC	WJRR	WZTA
WEBN	WAZU	WCCC	KLBJ	WMMS

New This Week At Triple A Radio:

WVOD	KRSH	KSPN	WZEW
------	------	------	------

On:

WRLT	KRXS	KBAC	KMMS	KTAO
KMTN	KFAN	WEBK	WERI	WIVI

Fly Away

Lenny Kravitz

the new song from the album 5
Produced, written, arranged and performed by Lenny Kravitz
Representation: Craig Fruin and Howard Kaufman/HK Management
©1998 Virgin Records America, Inc.
www.virginrecords.com
AOL Keyword: Virgin Records



MODERN ROCK BDS 300 SPINS

NEW!	LIVE105	WWDX	WXRA	WENZ	
WBCN	KTBZ	WFNX	91X	WXDX	
KNRX	KENZ	KWOD	WMRQ	KKND	
KXTE	WHTG	KFMA	KEDJ	KTEG	
WHMP	WXSR	WRRV	KRZQ	and more	

"Fly Away tested again in my Top 5. I'm moving it to power rotation!"
-DICK SHEETZ, PD/WJRR

U.S. TOUR KICKS OFF IN SEPTEMBER!



Dishwalla Back With 'Once In A While'

In 1996, Dishwalla had Airplay Monitor's top mainstream rock song of the year with "Counting Blue Cars," despite the fact it never reached No. 1 on the chart. "Cars" peaked at No. 2 for four weeks and spent seven more at No. 3. This week, "Once In A While," the lead track from "And You Think You Know What Life's About" (A&M), debuts at heritage rock at No. 37 and modern rock at No. 40.

Metallica's "Better Than You" (Elektra/EEG) becomes the fourth track from "Re-Load" to chart at mainstream rock and active rock, debuting at Nos. 29 and 22, respectively. "Better" gains more than 350% on each chart and lays claim to the biggest gainer at each format and is awarded Airpower status at active rock.

PANEL CHANGES: Added to the mainstream rock and active rock panels is **WALC** St. Louis (PD **Tommy Mattern**, APD **Rob Walker**, 314-621-0400). Added to the mainstream and heritage rock panels is **WLUM** Milwaukee (PD **Chuck Summers**, APD/MD **Terry Havel**, 414-771-1021). Moving from mainstream rock and active rock to modern rock is **WXEX** Providence, R.I. Added to modern rock is **WNEZ** Knoxville, Tenn. **WONE** Akron, Ohio (mainstream rock and heritage rock), is temporarily removed due to technical problems.

As a result of these panel changes, three songs have been designated Airpower tracks after adjustments were made to last week's numbers. At active rock, both **Megadeth's** "A Secret Place" (Capitol) and **Rage Against The Machine's** "No Shelter" (Epic) exceeded the 400 spins when you factor in last week's airplay at the adjusted panel. At mainstream rock, **Seven Mary Three's** "Over Your Shoulder" (Mammoth/Atlantic) edged past the 800-spin plateau.

ON THE MOVE: V2 expands with the addition of former 550 Music San Francisco/Seattle rep **Mark Rose** covering Seattle duties and former Geffen Detroit local **Gary Franklin** joining for similar duties. V2 West Coast promotion rep **Heather Luke** shifts to Los Angeles... Relativity VP of promotion **Kevin Carroll** adds artist-development duties... Trauma officially names **Mike Jacobs** senior VP of artist development. He was last CEO of the now defunct Way Cool Music... Virgin national promotion director **Ted Edwards** exits.

Geffen moves **Bob Catania's** assistant, **Jeff Stacey**, to Detroit for local duties; Stacey was handling triple-A promo duties as well... Effective Aug. 1, Hollywood Chicago local **David Perl** shifts to Philly... Former Crave rep **Jonathan Meyers** joins 550 for local promotion in San Francisco, and **Cheryl Broz** joins Columbia's local staff for Houston duties. Reach Crave New York regional **Cord Himelstein** at 212-288-1926; Chicago regional **Jaime Guzman** is at 773-693-9366... **J.J. Quest**, last PD of modern **WBZU** Richmond, Va., joins Sire for Atlanta-based regional promotion.

Arbs To Split L.A., Laughlin Still KIIS'd Off

Arbitron has announced that it will divide Los Angeles County into five sampling units, beginning with the fall book. Although the decision has reportedly been hailed by some L.A. station execs, **KIIS** Los Angeles GM **Roy Laughlin**, a longtime critic of the ratings agency who previously claimed that Arbitron's sampling favors Spanish-language outlets, remains highly skeptical of the rating firm's motivation.

Laughlin says Arbitron's move for a "geographic balance [merely] disguises that it's done to address [its] problem with diary distribution." He can't prove that—because Arbitron refuses to release info that details where Hispanic diaries were distributed.

Arbitron communications VP **Thom Mocarsky** disputes those claims. He says, "Hispanics are not overrepresented by ethnicity or by language preference. [The current ratings] represent what's happening in L.A. It's not an artifact of methodology." Why the geographic carving? "To give us a better control over the sample," he says. "A proportional number of diaries are going to the five areas, depending on population. Of course, to supplement low return rates, we will pump in more diaries where needed. This will make a good sample better. [Listening data] for those five zones will be readily available via Maximizer, so agencies will have access. It'll be easier to sell segments of L.A."

BUSINESS: MERCURY SPAWNING

Mercury Radio launches Mercury Events Group to produce events and plug advertisers into sponsorship opportunities on its Buffalo, N.Y.-area turf. Concert promoter **Connie Campanaro** is managing director of the new venture.

Premiere Radio Networks president/CEO **Steve Lehman**, along with Warner Bros. Records executive VP/GM **Andy Schuon**, attorney **Eric Weiss**, and Premiere Radio parent Jacor, are in an investor group looking to feed \$30 million into National Media Corp., an infomercial production company. On approval and consummation of the deal, Lehman will be chairman of the company.

Jones International Networks has completed its previously announced buy of MediaAmerica Inc.

The Wilmington, N.C., merger between SeaComm Inc.'s country **WKXB** and modern rock **WSFM** and Cape Fear Radio's AC/R&B combo **WGNI/WMNX** is terminated following more than a year of government delays. Sea-Comm names **Paul Knight** GM of **WKXB** and **WSFM**.

Zemira Jones, president/GM of Chicago classic rock **WXCD** and talk **WLS**, adds Radio Disney affiliate **WTAQ** to his portfolio.

Tom Kennedy, former VP/GM of Clear Channel's **KKND** (the End) New Orleans and sisters **WNOE/KHOM**, is the new VP of operations for Centennial's New Orleans stations, including classic rock **WRNO**. Consultant **Ted Stecker**, best known for his work with country outlets, is currently in-house at **WRNO** while that station looks for a PD to replace **Charlie Lake**, who exits.

FORMATS: WROX BOMBED!

Modern **WROX** (X96) Norfolk, Va., flips to top 40 as "The Bomb" under former PD of **KUMX** (Mix 104) New Orleans **Bill Thorman**. PD **Al Mitchell** is out; the remaining air staff are auditioning for their jobs. **WROX** is jockless for now, a station source says the **Mancow Muller** feed will not return with the new air staff. Mitchell can be reached at 757-446-9204.

The M Street Daily has Capstar's new **KUAB** Fairbanks, Alaska, trading classical for album rock as **KKED** (the Edge).

Country-to-classic rock convert **KEZH** Grand Island, Neb., picks up new calls **KROR** and **Bob and Tom** for mornings, according to M Street.

PROGRAMMING: WEASELIN' TO 'EJE PD

Modern **WEJE** Fort Wayne, Ind., PD **Scott Kolesar** exits; p.m. driver **Weasel** adds the title.

Former album **WZAT** (Z102) Savannah, Ga., PD **Greg Patrick** heads to album **WRQC** Fayetteville, N.C., as PD, replacing **Matt Patrick**.

Album **WKRK** Detroit APD **Mark Thompson**

Virtual Radio Debated At Industry Confab

by Jeff Silberman and Marc Schiffman

The 23rd annual Conclave, held July 16-20 at the Marriott City Center in Minneapolis, was billed as "a learning conference." What the programmers in attendance learned was that they could look forward to fewer programming jobs and air personality opportunities.

In his keynote address, CBS Radio president Dan Mason declared radio consolidation to be about two-thirds done, with the lion's share of future activity to come in medium and smaller markets. The repercussion? "Programming jobs will be eliminated," he said. "About 50% of the business in this country has merged in the last three to four years. You can't fight the changing of this industry."

What should attendees do in the face of that inevitability? "Diversify your skills. Go with the flow. Learn how to do sales. Become a GM."

The prospects for fledgling air personalities were hardly better, as the Research Group's Jason Kane and Broadcast Programming's Edie Hilliard outlined in their takes on multi-market digital automation in a session on Virtual Radio. BP's Total Radio service offers daypart-specific programming, while the Research Group's Virtual Radio service provides content for all dayparts except morning drive. Hilliard has eight clients (BP has many more clients for its syndicated formats), while Kane has 14.

In one of the panel's most contentious sessions, Kane raised eyebrows by noting that not only are a client station's music and liners programmed from Seattle, but there are virtual call-in requests as well, something he likened more to a movie than conventional radio.

Much of this didn't sit well with those in attendance. When programmers cited the current lack of "farm talent" and the fact that Virtual Radio would just exacerbate that problem, Hilliard could only acknowledge that it was a "major issue" that is still unresolved.

As has been the case with consolidation in general, the specter of Virtual Radio brought with it the issue of centralized music decisions for multiple stations. Kane told the audience that he was already being worked by "the sharpest people" from the country record community but was not yet hearing from rock promoters.

heads to Ann Arbor, Mich., to become the Cumulus cluster's operations manager/production manager/PD of album **WIQB**.

Album **WTAO** Carbondale, Ill., PD **Kit Mann** exits.

PEOPLE: THE NEXT DR. LAURA?

Album **WWDC-FM** (DC101) Washington, D.C., is apparently looking to expand **Monica Lewinsky's** listenership beyond that of **Linda Tripp** and **Ken Starr**. DC101 has written to her representative **Jacob Stein** proposing Lewinsky try out as a DC101 air talent. The letter says in part, "Several former political officials and celebrities have gone on to lucrative positions in broadcasting... Perhaps Ms. Lewinsky might be the next **G. Gordon Liddy** or **Dr. Laura!**"

Mancow returns to the air in Chicago July 27 on his new home, modern **WKQX** (Q101). He won't be joined by current Q101 morning co-host **Irma Blanco**, who's returning to L.A. to work at R&B oldies **KCMG** (Mega 100.3), probably as morning co-host. Mancow is reportedly looking to pick-up MTV VJ **Kennedy** as Blanco's replacement.

Meanwhile, album **KRQR** Chico, Calif., will pick up the Mancow show for mornings. That move sends the syndicated **Mark and Brian** to classic rock sister **KTHU**.

Don't be surprised if rock **KRQC** Monterey,

The other effect of consolidation that was brought up in more than one session concerned what stations will do to create more income. Before you think your nifty World Wide Web site will become a cash cow, heed MJJ's Margaret Shiverick, who told those attending the "Internet: Friend Or Foe?" session that those benefits will only be seen down the road. When attendees who have Web sites were asked to raise their hands if their site was making money, no one did.

On the air, Mason asserted, the days of eight or nine spot-loads per hour are over. A minimum of 12 or 13 spots should be the norm. That notion was met with some resistance in the top 40 panel. "This is our sacred cow," declared **WDCG** (G105) Raleigh, N.C., OM **Brian Burns**. "Playing 14 or 15 spots an hour is a trick bag. I'm worried about losing listeners not to my competitors but to other mediums [because of a too-high spot load]. We lose people, our cost per point goes up, which will turn off agencies. Ultimately, it could be bad for business."

MULTI-TASKING: NOT JUST FOR COMPUTERS ANYMORE

During the marathon July 16 session of five hourlong teaching seminars, the term "multi-tasking" was introduced into the debate regarding employees. Consultant **Mike McVay** initially broached the topic, saying he believes in giving people multiple roles in a station. "People's time expands and contracts with their workload."

Zapoleon Consulting's **Steve Davis** concurred, saying, "Second jobs for air staff to assist [the] PD and serve station success" were key in the consolidated world. Davis sells the concept as a tool toward empowerment. "The more responsibility you give people, the better work you're going to get from them," he said.

Moderating a session designed to give record companies a clearer understanding of how to deal with radio, **Bill Richards Consulting's** **Mark Bolke** suggested labels take a page from the multi-tasking handbook. Decrying the lack of support, service, and contact that smaller stations get from the labels, Bolke urged labels to add another item to their interns' duty lists. "Use your interns to call these markets," he said, noting it would provide goodwill to the stations and teach interns how to develop relationships.

Calif., ends its relationship with syndicated morning men **Mark** and **Brian** and opts for the **Howard Stern** feed in the next month.

Modern **KBRS** Fayetteville, Ark., morning man **Adam Black** exits; P/T **Joe Nasty** takes mornings as **Grover's Morning Madhouse**.

Modern **WHFS** Washington, D.C., promotion director **Mary Kay Lemay**, who recently resigned to join **Tori Amos' RAINN** charity, has decided to remain with the station.

Album **WBOP** Harrisonburg, Va., PD **Robin Kreisberg** joins album **KICT** Wichita, Kan., as APD, voice-tracking overnights. Middayer **R.J. Davis** is now MD. **WBOP** picks up **Bryan Hayes**, who returns to radio as PD/MD/morning man.

Kim Rowe, MD of triple-A **WCLZ** Portland, Maine, joins modern adult rival **WMGX** for P/T.

Former **WYNF** Tampa, Fla., PD/p.m. driver **Eric Stevens** is P/T at modern **WJBX** Fort Myers, Fla., which seeks a production director.

MARCONI NOMINEES

With the 1998 National Assn. of Broadcasters Radio Show getting closer, the NAB has released its list of nominees for the '98 Marconi Awards. **Howard Stern** is among the five network syndicated personality of the year nominees. Album **WDVE** Pittsburgh morning men **Scott Paulsen** and **Jim Krenn** are vying for major-market personality of the year. Album **WRXL** Richmond, Va., air talents **Jeff Beck** and **Jeff McKee** are up for medium-market personality. Rock station of the year nominees are **KATT** Oklahoma City, **KLOS** Los Angeles, **WBCN** Boston, **WFBQ** Indianapolis, and **WFYV** Jacksonville, Fla. The awards will be announced at an Oct. 17 ceremony, to be hosted by **Tom Joyner**.

Candlebox And Crackers



Modern KPNT St. Louis proved the perfect hosts as Candlebox's Kevin Martin and Dave Krusen dropped by. MD/afternoon driver Traci Wilde not only interviewed the pair on the air but presented them a luscious selection of cheese and crackers. Salivating, from left, are Warner Bros's Bob Hathaway, Wilde, Martin, Krusen, and APD Marty Linck.

WDHA Rides With The Mule



Album WDHA Morristown, N.J., held its Rock the Park '98 in late June, headlined by Gov't Mule. Shown, from left, are Gov't Mule's Warren Haynes, PD Lenny Bloch, Gov't Mule's Matt Abts, marketing director Kristin Colasurdo, and Gov't Mule's Allen Woody.

RADIO CONCERT MONITOR

DATE	CALL LETTERS	EVENT	SCHEDULED TO APPEAR
July 26	WHFS Washington, D.C.	"Now Hear This" Show	Chris McDermott
July 31	KNRK Portland, Ore.	Third Annual Big Stink	Big Bad Voodoo Daddy, Blink 182, Crystal Method, Gravity Kills, Green Day, Harvey Danger, Semisonic, Stabbing Westward
Aug. 1	KAZR Des Moines, Iowa	Mancow's Lazer Luau	Anthrax, Candlebox, Drain S.T.H., Hunger, Local H
Aug. 1	KNDD Seattle	EndFest '98	6 Degrees, Big Bad Voodoo Daddy, Blink 182, Bran Van 3000, Creeper Lagoon, Crystal Method, Dust Brothers, Feeder, Alex Gifford (of Propellerheads), Donald Glaude, Grant Lee Buffalo, Green Day, Harvey Danger, Hi Fi Killers, Marcy Playground, Modest Mouse, Pigeonhed, Semisonic, Stabbing Westward, Urge, Josh Wink
Aug. 15	WRZX Indianapolis	X-Fest '98	Athenaeum, Black Lab, Creed, Eve 6, Limp Bizkit, Marcy Playground, Our Lady Peace, Sprung Monkey, Stabbing Westward, Third Eye Blind
Aug. 30	WPLT Detroit	Planetfest 1998	Agents Of Good Roots, Grant Lee Buffalo, Patty Griffin, Sixpence None The Richer, Duncan Sheik, Wallflowers, Why Store
Sept. 11	KUPD Phoenix	U-Fest	Jerry Cantrell, Days Of The New, Metallica

To include your station's concert information in Rock Concert Monitor, call Marc Schiffman at 212-536-5065, fax 212-536-5286, or E-mail mschiffman@airplaymonitor.com

MONITOR PROFILE

For Rich Wall, Programming The Edge Is A Perpetual Homecoming Game

Buffalo, N.Y., native Rich Wall was lured into radio by modern consultant Tom Calderone. Wall, the new PD of modern WEDG (the Edge) Buffalo, N.Y., recalls growing up listening to Buffalo State University's WBNY, Calderone's brainchild and then the market's only modern outlet. It attracted Wall to the university and the station. "I always had a dream of there being a commercial alternative radio station like WHFS or KROQ in Buffalo, [so] the day the Edge signed on I was there," he says. Calderone launched WEDG and brought Wall on to host the local-music show. Hometown roots and a local-music focus continue to steer Wall and the station.

Wall figures he was the first to play local heroes Goo Goo Dolls in his college days, and between radio gigs, he'd done some work promoting Ani DiFranco. Those ties are reflected today on his playlist, where those acts are joined by regional faves the Tragically Hip and Barenaked Ladies.

"We play local music here in rotation,"



Rich Wall
Program Director
WEDG Buffalo, N.Y.

"Understanding the market's history allows me to identify songs that would work here"

Wall says. "Consistently, there's at least one in there. Bands that send me a CD, and I listen to it and think, 'Hey, this is as good as half of the new bands starting out, so let's spin it.'" He doesn't feel the need to shout it from the mountains, though. "You don't put something on the air and call it local. You let people know it's from Buffalo, but the idea is to meld it in with everything else you're playing to give it that credibility it needs. A lot of times people put a local song on and it's like they're apologizing for it. If you can find one or two songs which are compatible with what you're playing, you do yourself justice by playing them, not to mention the benefits you get when it comes to having your festivals and shows."

With classic rock sister WGRF (97 Rock) giving the Edge space, Wall cuts his mix with active-friendly titles from Monster Magnet and Creed. "We're the contemporary rock station, minus the Aerosmith or whatever. We're covering the rock territory. It's not like we look at a song and say, 'This is an active rock song.' It's like, 'Here's a song that's compatible with what we do in the market.'"

Still, it doesn't have quite the same guitar-driven sound found at WEDG under previous PD Vince Richards. "He was great at programming guitar songs," says Wall. "With my background, it's having the knowledge of the good guitar songs and understanding what's compatible with the market history that allows me latitude to identify songs that would work in the market, via my college radio experience, my retail experience, or even my experience just growing up here and listening to CFNY Toronto in its heyday . . . There's definitely an appetite for rock, and our job here is to supply the best rock possible and the best alternative possible and mix it all together in this great cocktail that makes a real interesting radio station."

Here's a sample hour on WEDG: Foo

Fighters, "My Hero"; Faith No More, "Epic"; Alice In Chains, "Man In The Box"; Smashing Pumpkins, "Ava Adore"; Live, "Lakini's Juice"; Fuel, "Shimmer"; Days Of The New, "The Down Town"; Pearl Jam, "Corduroy"; Spring Monkey, "Get 'Em Outta Here"; Cracker, "Low"; and Our Lady Peace, "Clumsy."

While the Edge has the current rock franchise to itself, WLCE (Alice@92.9) brought modern adult to Buffalo a year ago and has had an impact. Alice has taken on some of the Edge's music, and, Wall admits, "for an AC station, they've definitely tried to have a street presence [and] tried to get into a hip crowd . . . I don't know if that's to their benefit. I don't know if, outside of the Lilith Fair, 30-year-old women are showing up to some of the concerts that they try to have presence at." Besides, Wall adds, "we own the position of alternative and the position of playing new music in the market. They've tried to go head to head with us on some of that [image] stuff. I can't say that they've done well at it."

Meanwhile, the Edge has fought back. "We did some counterprogramming. We highlighted their weaknesses, [for example,] their repetition. We definitely took some stabs at them. If you ask anybody on the street, it's like, 'Yeah, I tried Alice, but I'm so sick of that Jewel song that I can't handle it anymore.'"

Both stations have had active TV campaigns. And there again, the Edge drove home the point of its variety and lack of repetition. "We poked fun at Alice with their corporate playlist," Wall says. "We used a three-card monte example of how they switch their songs around." Painting a picture of a station that he says has started to rest on its Jewel laurels, Wall says, "Their second act is yet to come."

Describing his air staff, Wall refers to each person's local or regional roots. Like his musical tastes, Wall says, some of the best air talent could be right under your nose. "People complain that there's nobody out there. It's because they're just looking out there and the only vibe you get on talent prospects is some aircheck tape," he says. "When you're out in the streets, you're meeting people. You run into characters all the time at your events. The morning show's always attracted a bunch of characters. You never know who the next runaway personality is . . . It's not about developing radio guys. Anyone can read a liner card with a big voice."

The next chapter for WEDG will be written by the Buffalo Bills. Both WEDG and WGRF will simulcast Bills play-by-play, a move Wall calls "a pretty big shot in the arm."

He expects to package the Bills for a modern audience. "There will be a consistent network feed across the board, but [as to] how it's colored and the breakers and everything else, we're really trying to do something different here—an alternative football approach, if you will."

He calls football a religion in Buffalo "that everybody shares, no matter who you are. You really can't lose in any association with it."

"Even when we didn't have the games," adds Wall, "Bills players were cool about coming down to the station. We've had some great relationships with a lot of them. Last fall was especially funny. We had the backup quarterback on the morning show forever. They always championed him, and the guy never got to play. Then, all of a sudden, in the middle of last year, he got the nod to be the starter, and it was like, 'Whoa, who could have foreseen that?' We tied him to promotions to make it even bigger."

MARC SCHIFFMAN

Continued from page 1

NOMINATIONS IN THE MAINSTREAM

WRCX and WRIF each picked up one nomination in each of the five principle station



categories. WRCX is up for major-market station of the year, with PD Dave Richards, APD/MD Jo Robinson, promotion director Natalie DiPietro, and local air personality Mancow. WRIF is up for station of the year,



PD of the year for Doug Podell, MD of the year for Dave Wellington, promotion director of the year for Heidi Kramer, and local air personality for Drew and Mike.

Other major-market nominees included KIOZ San Diego, up for three—station, MD Shanon Leder, and promotion director Shauna Moran. WDVE Pittsburgh, WYSP Philadelphia, and KISW Seattle are each vying for awards in two categories.

In the secondaries, KSJO San Jose earned four nominations—station, PD for Dana Jang, and local air personality for Laurie Free and Lamont & Tonelli. WJRR Orlando, Fla., and WXTB (98 Rock) Tampa, Fla., are each up for three. WJRR is looking for wins in the station category, PD for Dick Sheetz, and MD for Pat Lynch. WXTB



sends Brian Medlin up against Lynch in the MD category and sends Mike Oliviero into the promotion director camp and Bubba the Love Sponge into the local air personality battle. WEBN Cincinnati; WFBQ Indianapolis; WHJY Providence, R.I.; and WLZR Milwaukee are each up for two awards.

PLEASE SEND MY AWARD TO . . .

Some of those appearing on the ballot no longer hold the position they were nominated for. Oddest among that lot are KOMA and KITS. KOMA no longer exists as a modern, and with the transfer of dynamic duo Ron Nenni and nominee Jay Taylor to KITS, those two stations are now one.

Mike Stern was nominated for his work at KXTE, though he's just tendered his resignation. Rich Wall has shifted titles, being nominated for the secondary-market modern MD of the year honors for his work at WEDG, though he's now PD of the station (see Profile, page 4). And while Mancow remains in Chicago, he's now, of course, at modern WKQX, though he was nominated for his album WRCX air work.

THEY'RE BA-A-A-A-CK

Mancow and fellow former WRCX jock Lou Brutus reprise nominations from last year, a testament to WRCX's stature as a developer of great talent. While Brutus



is again a local air personality nominee, he got his nomination at a different format and station, modern WHFS.

The Brutus-hosted "Hard Drive" syndicated show also makes a return engagement on our ballot from last year.

Other repeat performers from last year include KROQ's Weatherly, Worden, Heide, and Jed the Fish at modern. WBCN's Oedipus and Loprete are also up again, as is WHFS' Robert Benjamin.

Rock perennial nominees include WRCX's Dave Richards, Jo Robinson, and Natalie DiPietro, while WRIF's team of Doug Podell, Dave Wellington, Heidi Kramer, and Drew and Mike are taking another crack at bat this year.

Programmers such as WLZR's Keith Hast-

ings and KATT Oklahoma City's Chris Baker are back on the ballot this year, as are MDs Loris Lowe of KLBJ Austin, Texas, and Sharon Schifino of WHJY Providence.

KISW Seattle morning man Bob Rivers has returned as an air personality nominee, as have WPYX Albany, N.Y.'s John Cooper; KSJO's Laurie Free; and KROX's Sara Trexler. WFBQ morning men Bob and Tom not only return for another crack at the local air personality awards but are also up for nationally syndicated air personality of the year. Their inclusion in the latter category points to an interesting trend, with three of the five nominees vying for the syndicated award being rock-focused shows: Bob and Tom, John Boy and Billy, and Howard Stern.



TRIPLE-A PLAY

Triple-A's three categories are dominated by WXRT Chicago, KFOG San Francisco, KMTT Seattle, and KGSR Austin. WXRT PD Norm Winer and MD Patty Martin will face KFOG PD Paul Marszalek and MD Bill Evans, KMTT PD Chris Mays and MD Dean Carlson, and KGSR PD Jody Denberg and MD Susan Castle.

The four stations compete with KBCO Denver for station of the year. The four PDs meet up with KBCO's Dave Benson, but once again WXPB Philadelphia MD Bruce Warren finds his way into the MD category, making it only the second year a noncommercial outlet has nabbed a nomination. It was Warren who made the ballot last year, too.



CONSULTANTS AND LABELS

The radio consultant category has been expanded to include group PDs, with album and modern formats folded into one category. That makes for a tougher field, though Jacobs Media's Tom Calderone makes the cut again this year. Jacor's Tom Owens is the only rock group PD to make the list.

And you'll notice a new category for label promotion team of the year. Atlantic, Columbia, and Elektra each count a rock showing among its four categories. Epic is up for awards in two categories, including rock. Across the five formats, Capitol is recognized solely for its rock efforts. There is also a new addition of a separate modern rock promotion team category which appears on a ballot supplement in this issue.

OTHER IMPORTANT STUFF

Across all formats, there are a total of 490 nominees in 10 formats and nine categories vying for 98 awards this year. Final ballots are included in all copies of this issue of Airplay Monitor and in subscription copies only of the Aug. 1 issue of Billboard. Competed ballots must be returned no later than Aug. 14.

These nominations were the result of preliminary ballots placed in the May 15 issue of the four Airplay Monitor magazines. Readers cast write-in votes. The eligibility period for nominees was May 1997-May 1998. Stations in the top 20 Arbitron markets were eligible for the major-market awards. Other markets were classified in the secondary-market category for the purposes of these awards.

Winners will be announced Sept. 19 at a banquet culminating the annual Billboard/Airplay Monitor Radio Seminar and Awards, scheduled for Sept. 17-19 at the Pointe Hilton Resort at Tapatio Cliffs in Phoenix. Dick Clark will host the Radio Awards ceremony.



CHEET SHEET BY MARK MARONE

212-536-5051 • mmarone@airplaymonitor.com

Jumpin' With Big Bad Voodoo Daddy

This week's Cheet Sheet is by Billboard's Carrie Bell.

In 1996, a group of lounge lovers made a film about wild nights in the Hollywood swing scene. As "Swingers" earned sleeper-hit status, actors **Vince Vaughn** and **Jon Favreau** became A-listers, haunts like the Dresden Room became tourist must-sees, and the house band **Big Bad Voodoo Daddy** had even Midwestern toes tapping.

"We did it because Jon was a good friend who always came to the Derby," singer/guitarist **Scotty Morris** says. "It was a great break. Before the movie, we'd play small clubs and sell out. After 'Swingers,' we'd sell out the clubs two or three nights in a row. And the audience wasn't just the hardcore guys in fedoras anymore."

As Vaughn would say, the Ventura, Calif., band is money, and Daddy's jumpin' drinking song, "You And Me And The Bottle Makes Three



Big Bad Voodoo Daddy

Tonight (Baby)," is one of several swing records breaking through at modern and other formats at the moment. "I wrote it early on when I got into the Rat Pack. It's a wacky, fun, somewhat autobiographical romp through a young guy's drinking eyes."

Morris, who used to be a studio player, never regrets returning to his **Cab Calloway** roots but doesn't want to be seen as a **Glenn Miller** revival band. "When I left our first rehearsal, I felt so alive. I was finally playing music I loved.

But we aren't a purist band by any stretch of the imagination. We want to push swing into the next millennium. It's more than music. It's a life of dressing up, going out, romance. For the first time in years, men and women are dancing together."

Morris says there's a drawback to a crowded dance card. "My dry-cleaning bill is unbelievable. We always wear jackets, and it's hot onstage. More people are getting dressed to the nines, so thrift stores are drying up. I have a few secret stashes, but a lot of my suits have to be custom-made, and that means coughing up more dough."

Just Hogging Up Space



When Spacehog touched down in the South, a swarm of fans gathered. Shown in the back row, from left, are Warner Bros.' **Danny Davenport**, Spacehog's **Antony Langdon**, Warner Bros.' **Dave Danheisser**, and Sire's **William Marion**. In the front row, from left, are Spacehog's **Jonny Cragg**; WNNX (99X) Atlanta MD **Sean Demery**; Spacehog's **Royston Langon**; former WPLA Jacksonville, Fla., PD **Greg Brady**; and Spacehog's **Richard Steel**.

Publisher: Jon Guynn
 Editor: Sean Ross
 Managing Editor: Marc Schifman
 National Chart Manager: Linda Silver
 Mainstream Rock/Triple-A Chart Manager: Anthony Colombo
 Modern Rock Chart Manager: Mark Marone
 Associate Director of Charts: Steven Graybow
 Chart Production Manager: Michael Cusson
 Asst. Chart Production Manager: Alex Vitoulis
 Editorial Production Managers: Barry Bishin, Marcia Repinski
 Editorial Production: Susan Chicola, Marc Giaquinto, Maria Maniclic, Lisa Rathgeb
 Copy Editor: Carl Rosen
 Advertising Production Manager: Lydia Mikulko
 Advertising Production Coordinator: Paul Page
 Art Director: Ray Carlson
 Advertising Production Artist: Karen Platt

National Advertising Manager: Hank Spann
 Account Managers: Jeff Somerstein, Sharon White
 Advertising Services Manager: Alyse Zigman
 Sales Assistants: Evelyn Aszodi, Erica Bengtson, Candace Gil

Editorial Adviser: Timothy White
 Director of Production & Manufacturing: Marie Gombert
 Circulation Director: Jeanne Jamin
 Marketing Manager: Rob Accatino

Billboard Music Group
 President: Howard Lander
 Senior VP/General Counsel: Georgina Challis
 Vice Presidents: Irwin Kornfeld, Karen Dertley, Adam White
 Director of Strategic Development: Ken Schlager
 Business Manager: Joellen Sommer

1515 Broadway, New York, NY 10036 212-764-7300
 5055 Wilshire Blvd., 7th floor, Los Angeles, CA 90036 213-525-2300
 For subscriptions call: 800-745-8922

Airplay Monitor reporting panels are based solely on a station's musical content.

©1998 BPI Communications Inc. No part of this publication may be reproduced, stored in any retrieval system, or transmitted, in any form or by any means, electronic, mechanical, photocopying, recording, or otherwise, without the prior written permission of the publisher.

POWER PLAYLISTS

For Week Ending July 19, 1998



Playlists supplied by Broadcast Data Systems' Radio Track service. Songs ranked by number of plays in monitored week. Playlists are listed in order of TSA weekly count, beginning with the highest-counting station. Counts are updated twice weekly following the release of the Spring and Fall Arbitron surveys. The number of stations shown each week varies depending upon space.

KLOS Los Angeles
PD: John Duncan
MD: Rita Whelan



Table with 2 columns: Song Title, Rank. Includes tracks like 'Kenny Wayne Shepherd, Blue On Black', 'Joe Satriani, Lights Of Heaven', etc.

WYSP Philadelphia
OM: Tim Sabean
PD: Neal Mirsky



Table with 2 columns: Song Title, Rank. Includes tracks like 'Metallica, Fuel', 'Kenny Wayne Shepherd, Blue On Black', etc.

WRGX Chicago
SM: Dave Richards
APD/MD: Jo Robinson



Table with 2 columns: Song Title, Rank. Includes tracks like 'Sevendust, Black', 'The Smashing Pumpkins, Ava Adore', etc.

KQRS Minneapolis
PD: Dave Hamilton
APD/MD: Reed Enderse



Table with 2 columns: Song Title, Rank. Includes tracks like 'Jimmy Page & Robert Plant, Shining In The', 'John Fogarty, Premonition', etc.

WMMR Philadelphia
PD: Joe Bonadonna
MD: Ken Zipeto



Table with 2 columns: Song Title, Rank. Includes tracks like 'Days Of The New, The Down Town', 'Pearl Jam, In Hiding', etc.

WWDC Washington, DC
APD/MD: Buddy Rizer



Table with 2 columns: Song Title, Rank. Includes tracks like 'Candlebox, It's Alright', 'Jerry Cantrell, Cut You In', etc.

WFBG Indianapolis
OM: Marty Bender
MD: Ace Cosby



Table with 2 columns: Song Title, Rank. Includes tracks like 'Matchbox 20, Real World', 'Aerosmith, I Don't Want To Miss A Thing', etc.

WRIF Detroit
OM: Doug Pedell
APD: Dave Wellington



Table with 2 columns: Song Title, Rank. Includes tracks like 'Pearl Jam, In Hiding', 'Creed, Torn', etc.

WAAF Boston
PD: Dave Douglas
MD: John Osterlind



Table with 2 columns: Song Title, Rank. Includes tracks like 'Foo Fighters, Baker Street', 'Rage Against The Machine, No Shelter', etc.

WDVE Pittsburgh
PD: Garrett Hart
MD: Cris Winter



Table with 2 columns: Song Title, Rank. Includes tracks like 'Rod Stewart, Cigarettes And Alcohol', 'The Wallflowers, Heros', etc.

KLOL Houston
Dir Of OPS: Michael Hughes
APD/MD: Max Dugan



Table with 2 columns: Song Title, Rank. Includes tracks like 'The Wallflowers, Heros', 'Aerosmith, I Don't Want To Miss A Thing', etc.

WNXC Cleveland
PD: Bill Louis
MD: David Jockers



Table with 2 columns: Song Title, Rank. Includes tracks like 'Aerosmith, I Don't Want To Miss A Thing', 'Jimmy Page & Robert Plant, Shining In The', etc.

WKLS Atlanta
PD: Pat Ervin
MD: Lisa Sturgis



Table with 2 columns: Song Title, Rank. Includes tracks like 'Matchbox 20, Real World', 'Creed, My Own Prison', etc.

KTXQ Dallas
OM: Andy Lockridge
MD: Redbeard



Table with 2 columns: Song Title, Rank. Includes tracks like 'Creed, What's This Life For', 'Monster Magnet, Space Lord', etc.

KEGL Dallas
PD: Greg Stevens
MD: Cindy Scull



Table with 2 columns: Song Title, Rank. Includes tracks like 'DLR Band, Slam Dunk', 'Tool, Forty Six & 2', etc.

WALC St. Louis
PD: Tommy Mattern
APD: Rob Walker



Table with 2 columns: Song Title, Rank. Includes tracks like 'Stabbing Westward, Save Yourself', 'The Smashing Pumpkins, Ava Adore', etc.

WMMS Cleveland
PD: Bob Neumann
APD: 'Spaceman' Scott Hughes



Table with 2 columns: Song Title, Rank. Includes tracks like 'Aerosmith, I Don't Want To Miss A Thing', 'Sonicosis, Closing Time', etc.

WZTA Miami
VP/Pgm: Gregg Steele



Table with 2 columns: Song Title, Rank. Includes tracks like 'Fastball, The Way', 'Creed, What's This Life For', etc.

KSHE St. Louis
PD: Rick Bales
MD: Al Hoffer



Table with 2 columns: Song Title, Rank. Includes tracks like 'Metallica, Fuel', 'Kenny Wayne Shepherd, Blue On Black', etc.

WEBN Cincinnati
OM: Jim Richards
MD: Rick Jambie



Table with 2 columns: Song Title, Rank. Includes tracks like 'Metallica, Fuel', 'Kenny Wayne Shepherd, Blue On Black', etc.

KSJO San Jose
PD: Dana Jang
MD: Laurie Free



Table with 2 columns: Song Title, Rank. Includes tracks like 'Kenny Wayne Shepherd, Blue On Black', 'Joe Satriani, Ceremony', etc.

WIYY Baltimore
PD: Rick Strauss
APD/MD: Rob Heckman



Table with 2 columns: Song Title, Rank. Includes tracks like 'Metallica, Fuel', 'Days Of The New, The Down Town', etc.

WRQC Minneapolis
OM: Andy Bloom
PD: Lauren MacLeash
APD/MD: Jay Philpott



Table with 2 columns: Song Title, Rank. Includes tracks like 'The Smashing Pumpkins, Ava Adore', 'Van Halen, Fire In The Hole', etc.

WKRC Detroit
Interim PD: Mark Thompson
MD: Erin Carman



Table with 2 columns: Song Title, Rank. Includes tracks like 'Metallica, Fuel', 'Aerosmith, What Kind Of Love Are You On', etc.

Playlists supplied by Broadcast Data Systems... Radio Track service...

KOXR Minneapolis PD: Wade Linder APD/MD: Bill Jones. Top 30 playlist including Deep Purple, Sevendust, Aerosmith, Metallica, Megadeth, Rammstein, etc.

WXTB Tampa OM: Brad Hardin MD: Brian Medlin. Top 30 playlist including Days Of The New, Creed, Jerry Cantrell, My Song, etc.

WLZR Milwaukee PD: Keith Hastings MD: Marilyn Mee. Top 30 playlist including Kenny Wayne Shepherd, Blue On Black, Creed, etc.

KISW Seattle SM/DP: Clark Ryan APD/MD: Cathy Faulkner. Top 30 playlist including Candlebox, I Don't Want To Miss A Thing, Creed, etc.

WBAB Long Island VP Pgm: Bob Buchman OM: Eric Wellman. Top 30 playlist including Goo Go Dolls, Ins, Fastball, The Way, etc.

WHYJ Providence PD: Joe Bevilacqua MD: Sharon Schifino. Top 30 playlist including Kenny Wayne Shepherd, Blue On Black, Metallica, etc.

WBZX Columbus, OH PD: Hal Fish APD/MD: Ronni Hunter. Top 30 playlist including Stabbing Westward, Save Yourself, Creed, etc.

WIRR Orlando PD: Dick Sheetz MD: Pat Lynch. Top 30 playlist including Creed, What's This Life For, Goo Go Dolls, etc.

KQRC Kansas City PD: Vince Richards MD: Valerie Knight. Top 30 playlist including Metallica, Fuel, Stabbing Westward, etc.

KUPD Phoenix OM: Tim Maranzville PD: JJ Jeffries. Top 30 playlist including The Hunger, Free, Stabbing Westward, etc.

WRDU Raleigh PD: Bob Edwards MD: Mark Arsen. Top 30 playlist including Red Stewart, Cigarettes And Alcohol, Jimmy Page & Robert Plant, etc.

KBPI Denver PD: Bob Richards MD: Willie B. Top 30 playlist including Megadeth, Use The Man, Creed, etc.

WIMZ Knoxville PD: Jim Pemberton MD: Bill Kidd. Top 30 playlist including Kenny Wayne Shepherd, Remember Me, Tommy Shaw, etc.

KUFO Portland OM: Dave Numme APD: Al Scott. Top 30 playlist including Days Of The New, Creed, Jerry Cantrell, etc.

KISS San Antonio OM: Virgil Thompson PD: Kevin Vargas MD: C.J. Cruz. Top 30 playlist including Stabbing Westward, Save Yourself, Fuel, etc.

WLUM Milwaukee PD: Chuck Summers APD/MD: Terry Havel. Top 30 playlist including Grant Lee Buffalo, Truly, Truly, Fuel, etc.

WCCC Hartford PD: Michael Picozzi APD/MD: Mike Karoly. Top 30 playlist including Jerry Cantrell, My Song, Candlebox, etc.

KIOZ San Diego PD: Tim Dukes MD: Shannon Leder. Top 30 playlist including Creed, My Own Prison, Joe Satriani, etc.

WQXA Harrisburg Interim: PD: Claudine DeLorenzo. Top 30 playlist including Stabbing Westward, Save Yourself, Monster Magnet, etc.

WROQ Greenville, S.C. PD: Ken Carson APD/MD: K.C. Carson. Top 30 playlist including Aerosmith, I Don't Want To Miss A Thing, Megadeth, etc.

KDKB Phoenix OM: Tim Maranzville MD: Tracy Lea. Top 30 playlist including Storyville, Born Without You, Molly Hatchet, etc.

WCKW New Orleans GM: Sid Levett. Top 30 playlist including Kenny Wayne Shepherd, Blue On Black, Aerosmith, etc.

KATT Oklahoma City PD: Chris Baker MD: Jake Daniels. Top 30 playlist including Stabbing Westward, Save Yourself, Metallica, etc.

WLWQ Columbus PD: Greg Ausham. Top 30 playlist including Aerosmith, I Don't Want To Miss A Thing, Kenny Wayne Shepherd, etc.

POWER PLAYLISTS

For Week Ending July 19, 1998



Playlists supplied by Broadcast Data Systems' Radio Track service. Songs ranked by number of plays in monitored week. Playlists are listed in order of TSA weekly cume, beginning with the highest-cuming station. Cumes are updated twice yearly following the release of the Spring and Fall Arbitron surveys. The number of stations shown each week varies depending upon space.

WDHA Morristown PD: Lenny Bloch MD: Terrie Carr



Table with 2 columns: Song Title, Rank. Includes tracks like 'Fastball, The Way', 'Aerosmith, I Don't Want To Miss A Thing', 'Buddy Guy Feat. Johnny Lang, Midnight'.

WEGR Memphis PD: Drake Hall MD: Zeke Logan



Table with 2 columns: Song Title, Rank. Includes tracks like 'The Wallflowers, Heros', 'Jimmy Page & Robert Plant, Shining In The', 'John Fogarty, Premonition'.

WIOT Toledo OM/MD: Darrin Arriens APD: Don Davis



Table with 2 columns: Song Title, Rank. Includes tracks like 'Candlebox, It's Alright', 'Days Of The New, The Down Town', 'Kenny Wayne Shepherd, Blue On Black'.

KLAQ El Paso PD/MD: "Magic" Mike Ramsey



Table with 2 columns: Song Title, Rank. Includes tracks like 'Fastball, The Way', 'Pearl Jam, Wishist', 'Foo Fighters, My Hero'.

WAPL Green Bay PD: Randy Hawke



Table with 2 columns: Song Title, Rank. Includes tracks like 'Seven Mary Three, Over Your Shoulder', 'Kenny Wayne Shepherd, Somehow, Somewhere', 'Stacy Farrow, Born Without You'.

WFVY Jacksonville PD: David Moore MD: "Woodman"



Table with 2 columns: Song Title, Rank. Includes tracks like 'Aerosmith, I Don't Want To Miss A Thing', 'Rod Stewart, Cigarettes And Alcohol', 'Kenny Wayne Shepherd, Blue On Black'.

KBER Salt Lake City OM: Bruce Jones



Table with 2 columns: Song Title, Rank. Includes tracks like 'Candlebox, It's Alright', 'Eve 6, Inside Out', 'Stabbing Westward, Save Yourself'.

KLBJ Austin OM: Jeff Carrol MD: Larri Lowe



Table with 2 columns: Song Title, Rank. Includes tracks like 'Monster Magnet, Space Lord', 'Big Wreck, That Song', 'Days Of The New, The Down Town'.

WTUE Dayton PD: Chris Gayton MD: John Beaulieu



Table with 2 columns: Song Title, Rank. Includes tracks like 'Go Go Dolls, Iris', 'Rod Stewart, Cigarettes And Alcohol', 'Brother Cane, I Lie In The Bed I Make'.

WNOR Norfolk PD: Harvey Kojan APD/MD: Tim Parker



Table with 2 columns: Song Title, Rank. Includes tracks like 'Creed, Torn', 'Kenny Wayne Shepherd, Blue On Black', 'Metallica, Fuel'.

KRXQ Sacramento SM: Curtiss Johnson APD: Pat Martin MD: Kylee Brooks



Table with 2 columns: Song Title, Rank. Includes tracks like 'Tool, Forty Six & 2', 'Creed, What's This Life For', 'Megadeth, Use The Man'.

WPXK Albany PD/MD: John Cooper



Table with 2 columns: Song Title, Rank. Includes tracks like 'Go Go Dolls, Iris', 'Aerosmith, I Don't Want To Miss A Thing', 'Kenny Wayne Shepherd, Blue On Black'.

WBLM Portland, ME PD: Herb Ivy MD: Brian James



Table with 2 columns: Song Title, Rank. Includes tracks like 'Rod Stewart, Cigarettes And Alcohol', 'John Fogarty, Premonition', 'Aerosmith, I Don't Want To Miss A Thing'.

WZZO Allentown PD: Robin Lee MD: Keith Moyer



Table with 2 columns: Song Title, Rank. Includes tracks like 'Semisonic, Closing Time', 'The Wallflowers, Heros', 'Fastball, The Way'.

WTFX Louisville OM: Michael Lee PD: Future Bob



Table with 2 columns: Song Title, Rank. Includes tracks like 'Monster Magnet, Space Lord', 'Creed, My Own Prison', 'Jerry Cantrell, Cut You In'.

WPLR New Haven PD: John Griffin MD: Pam Landry



Table with 2 columns: Song Title, Rank. Includes tracks like 'Kenny Wayne Shepherd, Somehow, Somewhere', 'Fastball, The Way', 'John Fogarty, Premonition'.

KEZO Omaha OM: Doug Sorensen MD: Bruce Patrick



Table with 2 columns: Song Title, Rank. Includes tracks like 'Days Of The New, The Down Town', 'Eve 6, Inside Out', 'Candlebox, It's Alright'.

WCMF Rochester OM: Harry Jacobs APD: Scott VanDusen MD: Dave Kane



Table with 2 columns: Song Title, Rank. Includes tracks like 'Go Go Dolls, Iris', 'Jimmy Page & Robert Plant, Shining In The', 'Pearl Jam, Wishist'.

WTPT Greenville, S.C. PD: Zakk Tyler MD: Rob Hamilton



Table with 2 columns: Song Title, Rank. Includes tracks like 'Monster Magnet, Space Lord', 'Jerry Cantrell, My Song', 'Days Of The New, The Down Town'.

KCAL San Bernardino OM: Rick Shaw MD: MJ Matthews



Table with 2 columns: Song Title, Rank. Includes tracks like 'Creed, What's This Life For', 'Monster Magnet, Space Lord', 'Candlebox, It's Alright'.

WKQQ Lexington PD: Tony Tilford MD: Radio Boy



Table with 2 columns: Song Title, Rank. Includes tracks like 'Brother Cane, I Lie In The Bed I Make', 'Seven Mary Three, Over Your Shoulder', 'Candlebox, It's Alright'.

WKLQ Grand Rapids OM: Tony Gates MD: Mark Feurie



Table with 2 columns: Song Title, Rank. Includes tracks like 'Candlebox, It's Alright', 'Fuel, Shimmer', 'Stabbing Westward, Save Yourself'.

WROV Roanoke PD: Buzz Casey MD: Bryan Shaw



Table with 2 columns: Song Title, Rank. Includes tracks like 'Fastball, The Way', 'The Wallflowers, Heros', 'Aerosmith, I Don't Want To Miss A Thing'.

KMJX Little Rock PD: Tom Wood MD: Jimmy Edwards



Table with 2 columns: Song Title, Rank. Includes tracks like 'Rod Stewart, Cigarettes And Alcohol', 'John Fogarty, Premonition', 'Aerosmith, I Don't Want To Miss A Thing'.

POWER PLAYLISTS

For Week Ending July 19, 1998



Playlists supplied by Broadcast Data Systems Radio Track service. Songs ranked by number of plays in monitored week. Playlists are listed in order of TSA weekly score, beginning with the highest-scoring station. Scores are updated twice yearly following the release of the Spring and Fall Arbitron surveys. The number of stations shown each week varies depending upon space.

KMOD Tulsa PD: Phil Stone MD: Rob Hurt



Table with 2 columns: Song Title, TW LW. Includes songs like 'John Fogerty, Promission', 'Rolling Stones, Out Of Control'.

WTPA Harrisburg PD: Chris James APD/MD: Dina Wagner



Table with 2 columns: Song Title, TW LW. Includes songs like 'Go Go Dolls, Iris', 'Aerosmith, I Don't Want To Miss A Thing'.

WAQX Syracuse PD: John McCrae APD/MD: Dave Frisina



Table with 2 columns: Song Title, TW LW. Includes songs like 'Jimmy Page & Robert Plant, Shining In The Sun', 'Aerosmith, I Don't Want To Miss A Thing'.

WXRC Charlotte PD: Ron Bowen



Table with 2 columns: Song Title, TW LW. Includes songs like 'Big Wreck, That Song', 'Creed, What's This Life For'.

WRXL Richmond PD: Brian Illes MD: Rik Maybee



Table with 2 columns: Song Title, TW LW. Includes songs like 'Chris Cornell, Sunshower', 'Euroclear, I Will Buy You A New Life'.

WZMT Wilkes Barre PD: Aaron Roberts MD: D. Taylor



Table with 2 columns: Song Title, TW LW. Includes songs like 'Stabbing Westward, Save Yourself', 'Days Of The New, The Down Town'.

KLPX Tucson DM: Larry Miles MD: Charlie Morris



Table with 2 columns: Song Title, TW LW. Includes songs like 'Candlebox, It's Alright', 'Jimmy Page & Robert Plant, Shining In The Sun'.

WTKX Pensacola PD: Joel Sampson APD/MD: Brother "The Shark" Dyba



Table with 2 columns: Song Title, TW LW. Includes songs like 'Foo Fighters, Walking After You', 'Monster Magnet, Space Lord'.

KAZR Des Moines PD: Sean Elliott MD: Paul Oslund



Table with 2 columns: Song Title, TW LW. Includes songs like 'Metallica, Fuel', 'Stabbing Westward, Save Yourself'.

KFRQ McAllen/Brownsville PD/MD: Michael Quinn



Table with 2 columns: Song Title, TW LW. Includes songs like 'DLR Band, Slam Dunk', 'Aerosmith, I Don't Want To Miss A Thing'.

KRZR Fresno PD/MD: E. Curtis Johnson



Table with 2 columns: Song Title, TW LW. Includes songs like 'Stabbing Westward, Save Yourself', 'Days Of The New, The Down Town'.

KZRR Albuquerque DM: Frank Jaxon PD: Phil Mahoney



Table with 2 columns: Song Title, TW LW. Includes songs like 'Candlebox, It's Alright', 'Kenny Wayne Shepherd, Somehow, Somewhere'.

KGGO Des Moines PD: Phil Wilson MD: J.D. Stone



Table with 2 columns: Song Title, TW LW. Includes songs like 'Aerosmith, I Don't Want To Miss A Thing', 'John Fogerty, Promission'.

WEZX Wilkes Barre DM: Rob Lipshutz MD: Paul "Maddog" Kelly



Table with 2 columns: Song Title, TW LW. Includes songs like 'Aerosmith, I Don't Want To Miss A Thing', 'John Fogerty, Promission'.

WRXK Fort Myers PD: John Razz MD: Susan Stone



Table with 2 columns: Song Title, TW LW. Includes songs like 'Van Halen, Fire In The Hole', 'The Wallflowers, Heroes'.

KOMP Las Vegas PD: Mike Culotta MD: Big Marly



Table with 2 columns: Song Title, TW LW. Includes songs like 'Foo Fighters, Baker Street', 'Jimmy Page & Robert Plant, Shining In The Sun'.

WSJZ Jackson PD: Tiana Patterson APD: Kevin Keith



Table with 2 columns: Song Title, TW LW. Includes songs like 'Aerosmith, I Don't Want To Miss A Thing', 'Sister Hazel, Conclude'.

WVRK Columbus, GA DM: Brian Waters AMO: April Hayse



Table with 2 columns: Song Title, TW LW. Includes songs like 'Go Go Dolls, Iris', 'Jimmy Page & Robert Plant, Shining In The Sun'.

WBUZ Toledo DM: Dan Bozyk MD: Marielle Salas



Table with 2 columns: Song Title, TW LW. Includes songs like 'Lenny Kravitz, Fly Away', 'Stabbing Westward, Save Yourself'.

WKLC Charleston, SC PD: Mike Rappaport



Table with 2 columns: Song Title, TW LW. Includes songs like 'Aerosmith, I Don't Want To Miss A Thing', 'Rod Stewart, Cigarettes And Alcohol'.

KRZZ Wichita PD: Lester St. James MD: Debbie Miller



Table with 2 columns: Song Title, TW LW. Includes songs like 'John Fogerty, Promission', 'Rod Stewart, Cigarettes And Alcohol'.

KILO Colorado Springs SM: Rich Hawk



Table with 2 columns: Song Title, TW LW. Includes songs like 'Fuel, Shimmer', 'Creed, What's This Life For'.

PZRR West Palm Beach PD: Rich Dickerson MD: Christie Banks



Table with 2 columns: Song Title, TW LW. Includes songs like 'John Fogerty, Promission', 'John Fogerty, Promission'.

WNCD Youngstown PD: Chris Patrick MD: Dom Nardella



Table with 2 columns: Song Title, TW LW. Includes songs like 'Rod Stewart, Cigarettes And Alcohol', 'John Fogerty, Promission'.

MAINSTREAM ROCK



SONG ACTIVITY REPORTS



For Week Ending July 19, 1998

Detailed song tracking information for the last 3 weeks for all songs showing increased plays this week. Total plays and gain do not include video play. Markets listed in order of population.

Table with 8 columns: Artist, Song, Total Stations, Chart Move, and a grid of market data (City, Station, Plays, Gain, IP). Includes AEROSMITH, CANDLEBOX, JERRY CANTRELL, CREED, and DAYS OF THE NEW.

Table with 8 columns: Artist, Song, Total Stations, Chart Move, and a grid of market data (City, Station, Plays, Gain, IP). Includes DRAIN S.T.H., JOHN FOGERTY, FUEL, GIRLS AGAINST BOYS, and GOO GOO DOLLS.

For Week Ending July 19, 1998

Detailed song tracking information for the last 3 weeks for all songs showing increased play this week. Total plays and gain do not include video play. Markets listed in order of population.

LENNY KRAVITZ 423/20 Fly Away (Virgin) Total Stations: 34 Chart Move: 35-36

MEGADETH 601/75 A Secret Place (Capitol) Total Stations: 62 Chart Move: 27-24

METALLICA 497/389 Better Than You (Elektra/EEG) Total Stations: 53 Chart Move: Debut 29

MONSTER MAGNET 1488/4 Space Lord (A&M) Total Stations: 81 Chart Move: 3-3

PEARL JAM 608/239 In Hiding (Epic) Total Stations: 49 Chart Move: 40-23

RAMMSTEIN 629/35 Du Hast (Slash/London/Island) Total Stations: 54 Chart Move: 24-22

SEVEN MARY THREE 914/112 Over Your Shoulder (Mammoth/Atlantic) Total Stations: 77 Chart Move: 18-17

KENNY WAYNE SHEPHERD BAND 1075/244 Somehow, Somewhere, Someway (Revolution/Reprise) Total Stations: 78 Chart Move: 17-10

ROD STEWART 930/15 Cigarettes And Alcohol (Warner Bros.) Total Stations: 56 Chart Move: 16-16

STORYVILLE 425/36 Born Without You (Atlantic) Total Stations: 36 Chart Move: 36-35



Billboard & Monitor RADIO AWARDS

RULES

- This ballot lists nominees in each of ten categories. Please vote only once per format and market size in each category.
- Due to the diversity of the radio business, please refrain from voting in categories in which you do not feel qualified.
- Our editors retain the right to investigate the validity of each ballot. Companies, stations or individuals found to have engaged in voting manipulation will be disqualified.
- Ballots must be mailed separately, with no more than one ballot per envelope.

VOTING IN THE 1998 BILLBOARD/AIRPLAY MONITOR RADIO AWARDS is open to Billboard Magazine and Airplay Monitor subscribers only.

NOTE: Only ballots submitted on the original form and submitted with the voter's name and affiliation will be considered valid.

Please fill out this ballot and mail in the attached envelope.
BALLOTS MUST BE RECEIVED BY AUGUST 14, 1998

RADIO STATION OF THE YEAR

ADULT CONTEMPORARY	ADULT TOP 40/ MODERN ADULT	COUNTRY	MAINSTREAM ROCK	MODERN ROCK	MAINSTREAM R&B	ADULT R&B	MAINSTREAM TOP 40	RHYTHMIC TOP 40
<input type="checkbox"/> KIOI San Francisco	<input type="checkbox"/> KFMB San Diego	<input type="checkbox"/> KMLE Phoenix	<input type="checkbox"/> KIOZ San Diego	<input type="checkbox"/> KNDD Seattle	<input type="checkbox"/> KKDA Dallas	<input type="checkbox"/> WALR Atlanta	<input type="checkbox"/> KDWB Minneapolis	<input type="checkbox"/> KUBE Seattle
<input type="checkbox"/> WASH Washington	<input type="checkbox"/> KHMX Houston	<input type="checkbox"/> KNIX Phoenix	<input type="checkbox"/> WDVE Pittsburgh	<input type="checkbox"/> KROQ Los Angeles	<input type="checkbox"/> WGCI Chicago	<input type="checkbox"/> WDAS Philadelphia	<input type="checkbox"/> KIIS Los Angeles	<input type="checkbox"/> KYLD San Francisco
<input type="checkbox"/> WBEB Philadelphia	<input type="checkbox"/> KYSR Los Angeles	<input type="checkbox"/> KSCS Dallas	<input type="checkbox"/> WRCX Chicago	<input type="checkbox"/> WBCN Boston	<input type="checkbox"/> WKYS Washington	<input type="checkbox"/> WHUR Washington	<input type="checkbox"/> KRBE Houston	<input type="checkbox"/> WBBM Chicago
<input type="checkbox"/> WLIT Chicago	<input type="checkbox"/> WBMX Boston	<input type="checkbox"/> KYNG Dallas	<input type="checkbox"/> WRIF Detroit	<input type="checkbox"/> WHFS Washington	<input type="checkbox"/> WQHT New York	<input type="checkbox"/> WRKS New York	<input type="checkbox"/> WHTZ New York	<input type="checkbox"/> WJMN Boston
<input type="checkbox"/> WLTW New York	<input type="checkbox"/> WPLJ New York	<input type="checkbox"/> WMZQ Washington	<input type="checkbox"/> WYSP Philadelphia	<input type="checkbox"/> WNNX Atlanta	<input type="checkbox"/> WVEE Atlanta	<input type="checkbox"/> WVAZ Chicago	<input type="checkbox"/> WXKS Boston	<input type="checkbox"/> WKTU New York
<input type="checkbox"/> KMZQ Las Vegas	<input type="checkbox"/> KAMX Austin	<input type="checkbox"/> WAMZ Louisville	<input type="checkbox"/> KSJO San Jose	<input type="checkbox"/> KNRK Portland	<input type="checkbox"/> WBLK Buffalo	<input type="checkbox"/> KJMS Memphis	<input type="checkbox"/> KHFI Austin	<input type="checkbox"/> KGGI Riverside
<input type="checkbox"/> WHUD Newburgh	<input type="checkbox"/> KMXB Las Vegas	<input type="checkbox"/> WQYK Tampa	<input type="checkbox"/> WEBN Cincinnati	<input type="checkbox"/> KOME San Jose	<input type="checkbox"/> WJMH Greensboro	<input type="checkbox"/> WBHK Birmingham	<input type="checkbox"/> KKRZ Portland	<input type="checkbox"/> KLUC Las Vegas
<input type="checkbox"/> WMJQ Buffalo	<input type="checkbox"/> KZZO Sacramento	<input type="checkbox"/> WSIX Nashville	<input type="checkbox"/> WHJY Providence	<input type="checkbox"/> KXTE Las Vegas	<input type="checkbox"/> WPEG Charlotte	<input type="checkbox"/> WQMG Greensboro	<input type="checkbox"/> KRQQ Tucson	<input type="checkbox"/> KPRR El Paso
<input type="checkbox"/> WRCH Hartford	<input type="checkbox"/> WTKI Milwaukee	<input type="checkbox"/> WSM-FM Nashville	<input type="checkbox"/> WJRR Orlando	<input type="checkbox"/> WBRU Providence	<input type="checkbox"/> WQUE New Orleans	<input type="checkbox"/> WSOL Jacksonville	<input type="checkbox"/> WFLZ Tampa	<input type="checkbox"/> KTFM San Antonio
<input type="checkbox"/> WSNY Columbus	<input type="checkbox"/> WSSR Tampa	<input type="checkbox"/> WUBE Cincinnati	<input type="checkbox"/> WLZR Milwaukee	<input type="checkbox"/> WRAX Birmingham	<input type="checkbox"/> WTLC Indianapolis	<input type="checkbox"/> WYLD New Orleans	<input type="checkbox"/> WNCI Columbus	<input type="checkbox"/> WNVZ Norfolk

STATION PROMOTION/MARKETING DIRECTOR OF THE YEAR

AC / ADULT TOP 40	COUNTRY	MAINSTREAM ROCK	MODERN ROCK	R&B	MAINSTREAM TOP 40	RHYTHMIC TOP 40
<input type="checkbox"/> CINDY HORTON WMC Memphis	<input type="checkbox"/> MIKE CULOTTA WQYK Tampa	<input type="checkbox"/> TERESA BIRDSONG WEBN Cincinnati	<input type="checkbox"/> MARY KAY LEMAY WHFS Washington	<input type="checkbox"/> WAYNE COLLINS WJTT Chattanooga	<input type="checkbox"/> THERESA BEYER WHTZ New York	<input type="checkbox"/> MICHAEL BIEMOLT WBBM Chicago
<input type="checkbox"/> ROBERT LYLES KYSR Los Angeles	<input type="checkbox"/> STEPHANIE HOGERMAN WBEE Rochester	<input type="checkbox"/> NATALIE DIPIETRO WRCX Chicago	<input type="checkbox"/> LARRY "CHA-CHI" LOPRETE WBCN Boston	<input type="checkbox"/> ROCCO MACRI WQHT New York	<input type="checkbox"/> VON FREEMAN KIIS Los Angeles	<input type="checkbox"/> LESLIE CIPOLLA WJMN Boston
<input type="checkbox"/> JEN MARKHAM KMXB Las Vegas	<input type="checkbox"/> STEVE LEE WUSN Chicago	<input type="checkbox"/> HEIDI KRAMER WRIF Detroit	<input type="checkbox"/> JENNIFER NECH WNNX Atlanta	<input type="checkbox"/> MELANIE REYNOLDS WGZB Louisville	<input type="checkbox"/> TRISH GILLIS WXKS Boston	<input type="checkbox"/> JAY HARMON KUBE Seattle
<input type="checkbox"/> JACKIE MERTIKAS WJLK Asbury Park	<input type="checkbox"/> SHEILA SILVERSTEIN WPOC Baltimore	<input type="checkbox"/> SHAUNA MORAN KIOZ San Diego	<input type="checkbox"/> PATTY PASTOR KNRK Portland	<input type="checkbox"/> ADRIAN ROSS WILD Boston	<input type="checkbox"/> ALAN HENNES WSTR Atlanta	<input type="checkbox"/> VANESSA THILL KLUC Las Vegas
<input type="checkbox"/> FAY SHANNON KRUZ Santa Barbara	<input type="checkbox"/> CHERYL SPARKS WWWW Detroit	<input type="checkbox"/> MIKE OLIVIERO WXTB Tampa	<input type="checkbox"/> AMY STEVENS KROQ Los Angeles	<input type="checkbox"/> CONNIE LEE WALSH WVAZ Chicago	<input type="checkbox"/> SAMMY SIMPSON WWZZ Washington	<input type="checkbox"/> MARK ETCHASON KQKS Denver

TRIPLE-A STATION OF THE YEAR

- KBCO** Denver
- KFOG** San Francisco
- KGSR** Austin
- KMTT** Seattle
- WXRT** Chicago

PROGRAM DIRECTOR OF THE YEAR

- DAVE BENSON** KBCO Denver
- JODY DENBERG** KGSR Austin
- PAUL MARZALEK** KFOG San Francisco
- CHRIS MAYS** KMTT Seattle
- NORM WINER** WXRT Chicago

MUSIC DIRECTOR OF THE YEAR

- DEAN CARLSON** KMTT Seattle
- SUSAN CASTLE** KGSR Austin
- BILL EVANS** KFOG San Francisco
- PATTY MARTIN** WXRT Chicago
- BRUCE WARREN** WXPB Philadelphia

RADIO CONSULTANT/GROUP PD OF THE YEAR

AC / ADULT TOP 40	COUNTRY	MAINSTREAM/ MODERN ROCK	R&B	TOP 40
<input type="checkbox"/> GARY BERKOWITZ Berkowitz Broadcast Consulting	<input type="checkbox"/> TIM CLOSSON Chancellor Media	<input type="checkbox"/> TOM BARNES Sinton/Barnes	<input type="checkbox"/> TONY GRAY Gray Communications	<input type="checkbox"/> JERRY CLIFTON New World Communications
<input type="checkbox"/> RANDY LANE Randy Lane Company	<input type="checkbox"/> KEITH HILL Unconsultant	<input type="checkbox"/> TOM CALDERONE Jacobs Media	<input type="checkbox"/> STEVE HEGWOOD Radio One	<input type="checkbox"/> BILL RICHARDS Bill Richards Radio Consulting
<input type="checkbox"/> DAVE SHAKES Allan Burns & Associates	<input type="checkbox"/> BOB MOODY McVay Media	<input type="checkbox"/> TOMMY HADGES Pollack Media	<input type="checkbox"/> HARRY LYLES Lyles Consultancy	<input type="checkbox"/> STEVE SMITH Radio & Ratings
<input type="checkbox"/> DAN VALLIE Vallie/Richards	<input type="checkbox"/> JOEL RAAB Joel Raab Associates	<input type="checkbox"/> FRED JACOBS Jacobs Media	<input type="checkbox"/> BARRY MAYO Ma-Yo! Media	<input type="checkbox"/> DAN VALLIE Vallie/Richards
<input type="checkbox"/> GUY ZAPOLEON Zapoleon Media Strategies	<input type="checkbox"/> RUSTY WALKER Rusty Walker Consulting	<input type="checkbox"/> TOM OWENS Jacor	<input type="checkbox"/> STEVE SMITH Radio & Ratings	<input type="checkbox"/> GUY ZAPOLEON Zapoleon Media Strategies

RECORD LABEL PROMOTION TEAM OF THE YEAR

AC / ADULT TOP 40	COUNTRY	MAINSTREAM/ MODERN ROCK	R&B	TOP 40
<input type="checkbox"/> 550 MUSIC	<input type="checkbox"/> ARISTA NASHVILLE	<input type="checkbox"/> ATLANTIC	<input type="checkbox"/> ARISTA	<input type="checkbox"/> ARISTA
<input type="checkbox"/> ARISTA	<input type="checkbox"/> BNA	<input type="checkbox"/> CAPITOL	<input type="checkbox"/> ATLANTIC	<input type="checkbox"/> ATLANTIC
<input type="checkbox"/> ATLANTIC	<input type="checkbox"/> EPIC	<input type="checkbox"/> COLUMBIA	<input type="checkbox"/> COLUMBIA	<input type="checkbox"/> COLUMBIA
<input type="checkbox"/> COLUMBIA	<input type="checkbox"/> MCA NASHVILLE	<input type="checkbox"/> ELEKTRA	<input type="checkbox"/> ELEKTRA	<input type="checkbox"/> ELEKTRA
<input type="checkbox"/> ELEKTRA	<input type="checkbox"/> MERCURY	<input type="checkbox"/> EPIC	<input type="checkbox"/> PRIORITY	<input type="checkbox"/> RCA

INDIVIDUAL VOTERS MAY SUBMIT
ONLY ONE BALLOT!

NAME: _____
TITLE: _____
COMPANY: _____
CALL LETTERS: _____

ADDRESS: _____
CITY: _____ STATE: _____ ZIP: _____
TELEPHONE: _____ FAX: _____
SIGNATURE: _____

THE FLYS

"GOT YOU
(WHERE I WANT YOU)"

ALREADY ON AT:

WXRK	WBZU	WLIR	WMMS
WHFS	WHTG	KMYZ	WNEW
WBCN	CIMX	WEQX	WKLO
WNNX	WMRQ	WARQ	KRAD
KWOD	WKRL	WKQX	WGBF
KNDD	WRZX	WRIF	KTUX
KNRK	XHRM	KUPD	KLAQ
KPNT	WFNX	WZTA	KMBY
WAZU			

AS FEATURED IN THE ORIGINAL SOUNDTRACK ALBUM,
DISTURBING BEHAVIOR (78864-74007)
AND THE NEW ALBUM BY THE **THE FLYS**, HOLIDAY MAN (78864-74006)
ON TRAUMA RECORDS

SOUNDTRACK IN STORES JULY 28TH



PRODUCED BY CHRIS GOSS
MIXED BY HOLMAN AND PAUL PALMER



©1998 Trauma Records. All rights reserved.





Candlebox It's Alright

The first single from their forthcoming album *Happy Pills*
album in stores July 21

2 MAINSTREAM ROCK MONITOR
1730 SPINS (+198)

**OVER 40 STATIONS REPORTING TOP 5 PHONES!
ON 60 MODERN ROCK STATIONS
CHARTBOUND!**

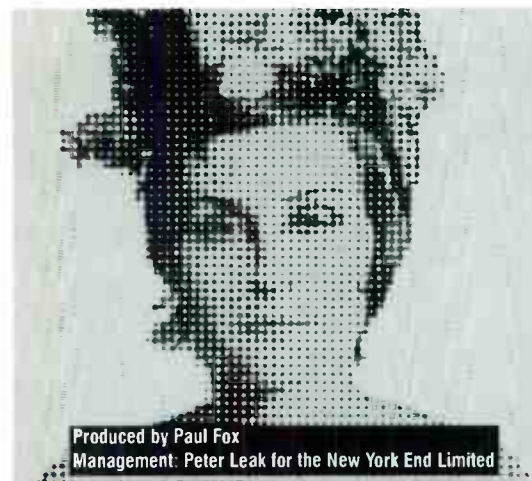
Produced, Engineered and Mixed by Ron Nevison * Managed by John Reese for Freeze Artist Management
www.candlebox.com

World Radio History

THIS WEEK	LAST WEEK	WKS. ON CHART	MAINSTREAM		
			TITLE/IMPRINT/PROMOTION LABEL	ARTIST	DETECTIONS TW LW
			★ ★ ★ No. 1 ★ ★ ★		
1	1	9	THE DOWN TOWN OUTPOST/GEFFEN	DAYS OF THE NEW	1829 1769
2	2	6	IT'S ALRIGHT MAVERICK/WARNER BROS.	CANDLEBOX	1730 1532
3	3	10	SPACE LORD A&M	MONSTER MAGNET	1488 1484
4	4	10	I DON'T WANT TO MISS A THING COLUMBIA	AEROSMITH	1373 1404
5	8	7	WHAT'S THIS LIFE FOR WIND-UP	CREED	1308 1162
6	6	10	SHINING IN THE LIGHT ATLANTIC	JIMMY PAGE & ROBERT PLANT	1252 1272
7	5	28	BLUE ON BLACK REVOLUTION/REPRISE	KENNY WAYNE SHEPHERD BAND	1221 1317
8	7	20	SAVE YOURSELF COLUMBIA	STABBING WESTWARD	1212 1301
9	11	10	MY SONG COLUMBIA	JERRY CANTRELL	1106 1093
10	17	3	SOMEHOW, SOMEWHERE, SOMEWAY REVOLUTION/REPRISE	KENNY WAYNE SHEPHERD BAND	1075 831
11	10	24	TORN WIND-UP	CREED	1042 1121
12	9	24	FUEL ELEKTRA/VEEG	METALLICA	1041 1172
13	14	14	IRIS WARNER SUNSET/REPRISE	GOD GOO DOLLS	1029 997
14	15	17	SHIMMER 550 MUSIC	FUEL	974 958
15	12	11	AVA ADORE VIRGIN	THE SMASHING PUMPKINS	965 1063
16	16	11	CIGARETTES AND ALCOHOL WARNER BROS.	ROD STEWART	930 915
			★ ★ ★ AIRPOWER ★ ★ ★		
17	18	4	OVER YOUR SHOULDER MAMMOTH/ATLANTIC	SEVEN MARY THREE	914 802
18	13	19	I LIE IN THE BED I MAKE VIRGIN	BROTHER CANE	816 1023
19	20	9	PREMONITION REPRISE	JOHN FOGERTY	741 592
20	39	2	WHAT KIND OF LOVE ARE YOU ON COLUMBIA	AEROSMITH	691 375
21	19	13	HEROES EPIC	THE WALLFLOWERS	633 745
22	24	6	DU HAST SLASH/LONDON/ISLAND	RAMMSTEIN	629 594
23	40	12	IN HIDING EPIC	PEARL JAM	608 369
24	27	4	A SECRET PLACE CAPITOL	MEGADETH	601 526
25	23	20	CLOSING TIME MCA	SEMISONIC	578 600
26	25	11	MONSTERSIDE BIG CAT/V2	ADDICT	527 589
27	32	4	CRACK THE LIARS SMILE THE ENCLAVE/MERCURY	DRAIN S.T.H.	514 459
28	31	7	PARK AVENUE DGC/GEFFEN	GIRLS AGAINST BOYS	500 493
29	NEW		BETTER THAN YOU ELEKTRA/VEEG	METALLICA	497 108
30	22	15	WISHLIST EPIC	PEARL JAM	491 660
31	34	6	NO SHELTER EPIC	RAGE AGAINST THE MACHINE	444 450
32	26	13	THE WAY HOLLYWOOD	FASTBALL	442 500
33	33	6	SAINT JOE ON THE SCHOOL BUS CAPITOL	MARCY PLAYGROUND	438 453
34	29	23	CUT YOU IN COLUMBIA	JERRY CANTRELL	434 454
35	36	3	BORN WITHOUT YOU ATLANTIC	STORYVILLE	425 389
36	35	3	FLY AWAY VIRGIN	LENNY KRAVITZ	423 403
37	NEW		INSIDE OUT RCA	EVE 6	412 367
38	30	17	REAL WORLD LAVA/ATLANTIC	MATCHBOX 20	377 436
39	28	15	SLAM DUNK WAWAZAT!	DLR BAND	360 475
40	37	6	FALLING TVT	GRAVITY KILLS	358 431

THIS WEEK	LAST WEEK	WKS. ON CHART	MODERN		
			TITLE/IMPRINT/PROMOTION LABEL	ARTIST	DETECTIONS TW LW
			★ ★ ★ No. 1 ★ ★ ★		
1	1	17	IRIS WARNER SUNSET/REPRISE	GOO GOO DOLLS	2639 2667
2	2	14	INSIDE OUT RCA	EVE 6	2511 2403
3	5	7	ONE WEEK REPRISE	BARENAKED LADIES	2463 2293
4	3	17	FLAGPOLE SITTA SLASH/LONDON/ISLAND	HARVEY DANGER	2462 2361
5	4	21	SHIMMER 550 MUSIC	FUEL	2276 2341
6	6	21	CLOSING TIME MCA	SEMISONIC	1993 2139
7	7	8	INTERGALACTIC GRAND ROYAL/CAPITOL	BEASTIE BOYS	1775 1680
8	8	13	SAINT JOE ON THE SCHOOL BUS CAPITOL	MARCY PLAYGROUND	1587 1565
9	13	4	STAY (WASTING TIME) RCA	DAVE MATTHEWS BAND	1578 1317
10	15	6	PERFECT VIRGIN	THE SMASHING PUMPKINS	1566 1244
11	11	8	TRULY, TRULY SLASH/WARNER BROS.	GRANT LEE BUFFALO	1441 1437
12	12	9	WALKING AFTER YOU CAPITOL/ELEKTRA/VEEG	FOO FIGHTERS	1374 1366
13	10	24	THE WAY HOLLYWOOD	FASTBALL	1340 1485
14	9	11	AVA ADORE VIRGIN	THE SMASHING PUMPKINS	1261 1523
15	19	5	HOOCH BLACKBIRD/SIRE	EVERYTHING	1255 1124
16	17	10	GET 'EM OUTTA HERE SURFDOG/HOLLYWOOD	SPRUNG MONKEY	1219 1173
17	16	26	I WILL BUY YOU A NEW LIFE CAPITOL	EVERCLEAR	1202 1235
18	14	15	WHAT I DIDN'T KNOW ATLANTIC	ATHENAEUM	1189 1259
19	23	3	I THINK I'M PARANOID ALMO SOUNDS/INTERSCOPE	GARBAGE	1076 935
20	24	6	WHAT'S THIS LIFE FOR WIND-UP	CREED	1025 964
21	21	19	SAVE YOURSELF COLUMBIA	STABBING WESTWARD	1023 1033
22	18	17	JUMP RIGHT IN IMMORTAL/EPIC	THE URGE	1008 1131
23	20	17	PUSH IT ALMO SOUNDS/INTERSCOPE	GARBAGE	997 1117
24	27	3	OVER YOUR SHOULDER MAMMOTH/ATLANTIC	SEVEN MARY THREE	989 820
25	25	6	HIGH ECHO/ELEKTRA/VEEG	FEEDER	932 917
26	30	3	THE DOWN TOWN OUTPOST/GEFFEN	DAYS OF THE NEW	911 804
27	37	2	FATHER OF MINE CAPITOL	EVERCLEAR	870 640
28	32	2	JUMPER ELEKTRA/VEEG	THIRD EYE BLIND	870 736
29	25	5	WISHING I WAS THERE RCA	NATALIE IMBRUGLIA	845 853
30	35	2	JUMP JIVE AN' WAIL INTERSCOPE	THE BRIAN SETZER ORCHESTRA	788 671
31	22	23	WISHLIST EPIC	PEARL JAM	778 992
32	28	18	REAL WORLD LAVA/ATLANTIC	MATCHBOX 20	748 826
33	39	2	SAVE TONIGHT WORK	EAGLE EYE CHERRY	739 607
34	NEW		IN HIDING EPIC	PEARL JAM	729 488
35	36	6	NO SHELTER EPIC	RAGE AGAINST THE MACHINE	679 666
36	29	15	SPARK ATLANTIC	TORI AMOS	652 822
37	33	6	YOU AND ME AND THE BOTTLE MAKES THREE TONIGHT (BABY) COOLVILLE/EMI-CAPITOL	BIG BAD WOODOO DADDY	635 665
38	38	22	ZOOT SUIT RIOT MOJO/UNIVERSAL	CHERRY POPPIN' DADDIES	613 598
39	34	11	4 AM COLUMBIA	OUR LADY PEACE	612 664
40	NEW		ONCE IN A WHILE A&M	DISHWALLA	576 91

Records showing an increase in detections over the previous week, regardless of chart movement. A record which has been on either chart for more than 20 weeks will not receive a bullet, even if it registers an increase in detections. Airpower awarded to those records which attain 800 detections (mainstream) or 1,100 (modern) for the first time. If two records are tied in number of plays, the record being played on more stations is placed first. Records below the top 20 are removed from the chart after 26 weeks.



GRANT LEE BUFFALO

MONITOR/MODERN ROCK (11), 1441 SPINS
R&R ALTERNATIVE 9*

MONITOR/TRIPLE-A (4)
#3 MOST INCREASED, #3 GREATEST GAINER

R&R/ADULT ALTERNATIVE 2*
#1 MOST INCREASED

TRULY, TRULY

MULTI-FORMAT SMASH!!!

ON TOUR NOW!

WWW.GRANTLEEBUFFALO.COM

© 1998 SLASH RECORDS.

WXRK **WLUM** **CIDR**
KROQ **WPLT** **WMMS**
WXRT **KNDD** **KDKB**
WAQX **KMTT** **WSHE**
Q101 **WHFS** **KOZN**
Y100 **KTbz** **WPNT**
KLOS **KBCO** **WPTE**
LIVE 105 **KTCZ** **WROQ**
KFOG **WXRC** **KALC** (top 10 phones)
WBCN **WBL5** **and many more**

POWER PLAYLISTS

KFOG San Francisco PD: Paul Marszalek APD/MD: Bill Evans. Chart with 30 songs and their positions.

WBOS Boston PD: George Taylor Morris MD: Cliff Nash. Chart with 30 songs and their positions.

WXRT Chicago VP/Pgm: Norm Winer MD: Patty Martin. Chart with 30 songs and their positions.

KTCZ Minneapolis PD: Lauren MacLeish MD: Mike Wolf. Chart with 30 songs and their positions.

KBCO Denver PD: Dave Benson MD: Scott Arbaugh. Chart with 30 songs and their positions.

WHPT Tampa PD: Chuck Beck MD: Kurt Schreiner. Chart with 30 songs and their positions.

KMTT Seattle SM: Chris Mays APD: Jason Parker MD: Dean Carlson. Chart with 30 songs and their positions.

WVRV St. Louis PD: Mike Richter APD: Chuck Jeffries. Chart with 30 songs and their positions.

KXPK Denver APD/MD: Eric Schmidt. Chart with 30 songs and their positions.

CIDR Detroit PD: Wendy Duff MD: Jerry Mason. Chart with 30 songs and their positions.

KKZN Dallas PD: Joel Folger Interim MD: Abbey Goldstein. Chart with 30 songs and their positions.

WXRV Boston PD: Joanne Doady MD: Mike Mullaney. Chart with 30 songs and their positions.

Main chart table with columns: THIS WEEK, LAST WEEK, WKS. ON CHART, TITLE/IMPRINT/PROMOTION LABEL, ARTIST, TW, LW. Includes top songs like 'STAY (WASTING TIME)' by Dave Matthews Band.

MODERN ADULT

MODERN ADULT chart table with columns: THIS WEEK, LAST WEEK, WKS. ON CHART, TITLE/IMPRINT/PROMOTION LABEL, ARTIST, TW, LW. Includes top songs like 'IRIS' by Go Go Dolls.

Records showing an increase in detections over the previous week, regardless of chart movement. A record which has been on the chart for more than 20 weeks will not receive a bullet, even if it registers an increase in detections.

Discipline your tracking instructions to the best of your ability. We are not responsible for any errors in this report. If you have any questions, please contact your account manager.

Table with 12 columns: Artist, Title, Total Plays/Gain, and 12 radio markets (New York, L.A., Chicago, etc.). Rows include GRANT LEE BUFFALO, HARVEY DANGER, K'S CHOICE, LENNY KRAVITZ, and MARCY PLAYGROUND.

Table with 12 columns: Artist, Title, Total Plays/Gain, and 12 radio markets. Rows include DAVE MATTHEWS BAND, MONSTER MAGNET, PEARL JAM, POSSUM DIXON, and THE BRIAN SETZER ORCHESTRA.

Table with 12 columns: Artist, Title, Total Plays/Gain, and 12 radio markets. Rows include SEVEN MARY THREE, SMASH MOUTH, THE SMASHING PUMPKINS, SPRUNG MONKEY, and THIRD EYE BLIND.

SONG ACTIVITY REPORTS

For Week Ending July 19, 1998



Detailed song tracking information for the last 3 weeks for all songs showing increased play this week. Total play and gain do not include video play. Markets listed in order of population.

BARENAKED LADIES 2463/170

Table with columns: Station, TW, LW, 2W, IP, Chart Move, and 5-3. Lists stations like MTV, WKRX, KLYY, etc.

BEASTIE BOYS 1775/95

Table with columns: Station, TW, LW, 2W, IP, Chart Move, and 7-7. Lists stations like MTV, WKRX, KLYY, etc.

CANDLEBOX 540/31

Table with columns: Station, TW, LW, 2W, IP, Chart Move, and 2-2. Lists stations like MTV, WKRX, KLYY, etc.

CREED 1025/61

Table with columns: Station, TW, LW, 2W, IP, Chart Move, and 2-2. Lists stations like MTV, WKRX, KLYY, etc.

DAYS OF THE NEW 911/107

Table with columns: Station, TW, LW, 2W, IP, Chart Move, and 2-2. Lists stations like MTV, WKRX, KLYY, etc.

DISHWALLA 576/485

Table with columns: Station, TW, LW, 2W, IP, Chart Move, and 2-2. Lists stations like MTV, WKRX, KLYY, etc.

EAGLE EYE CHERYL 739/132

Table with columns: Station, TW, LW, 2W, IP, Chart Move, and 2-2. Lists stations like MTV, WKRX, KLYY, etc.

EVE 6 2511/108

Table with columns: Station, TW, LW, 2W, IP, Chart Move, and 2-2. Lists stations like MTV, WKRX, KLYY, etc.

EVERCLEAR 870/230

Table with columns: Station, TW, LW, 2W, IP, Chart Move, and 2-2. Lists stations like MTV, WKRX, KLYY, etc.

EVERYTHING 1255/131

Table with columns: Station, TW, LW, 2W, IP, Chart Move, and 2-2. Lists stations like MTV, WKRX, KLYY, etc.

FATBOY SLIM 372/84

Table with columns: Station, TW, LW, 2W, IP, Chart Move, and 2-2. Lists stations like MTV, WKRX, KLYY, etc.

FEEDER 932/15

Table with columns: Station, TW, LW, 2W, IP, Chart Move, and 2-2. Lists stations like MTV, WKRX, KLYY, etc.

THE FLYS 304/7

Table with columns: Station, TW, LW, 2W, IP, Chart Move, and 2-2. Lists stations like MTV, WKRX, KLYY, etc.

FOO FIGHTERS 1374/8

Table with columns: Station, TW, LW, 2W, IP, Chart Move, and 2-2. Lists stations like MTV, WKRX, KLYY, etc.

GARBAGE 1076/141

Table with columns: Station, TW, LW, 2W, IP, Chart Move, and 2-2. Lists stations like MTV, WKRX, KLYY, etc.

Monitor AIRPLAY

POWER PLAYLISTS

For Week Ending July 19, 1998

Playlists supplied by Broadcast Data Systems... Radio Track service. Songs ranked by number of plays in monitored week.

WXEJ Providence PD: Brent Petersen MD: John Alters 99.7X

WJEF Dayton PD: Jeff Stevens MD: Alan Rantz 106.5 BUZZ

WBZU Richmond OM: Jeff Cochran MD: Jay Smack 106.5 BUZZ

WPLA Jacksonville PD: Rick Schmidt 93.3

KFRR Fresno PD: Bruce Wayne New Rock 100.4

KLZR Kansas City PD: Roger The Dodger MD: Bob Osborn AMD: Jeff Petterson LAZER

WCY Portland, ME PD: Herb Ivy MD: Brian James 106.5 BUZZ

WLRS Louisville PD: Dennis Dillen MD: Gina Juliano NEW ROCK

KTEG Albuquerque PD: Skip Isley THE EDGE 107.9

WWCV Columbus PD/MD: Andy Davis 106.5 BUZZ

KPOI Honolulu PD: Brock Whaley MD: Nikki Basque 106.5 BUZZ

WRXQ Memphis PD: Tony Williams MD: John Michael 96X

KAEP Spokane OM: Ray Edwards PD: Haley Jones MD: Larry Pearson 106.5 BUZZ

WKRO Orlando OM: Taft Moore MD: Rosie Acevedo KR 93.1

KICT Wichita PD: Ron Eric Taylor APD: Robin Kreisberg MD: R.J. Davis T95

KFMA Tucson PD/MD: Chuck Roast 92.1 KFMA

WAVF Charleston, SC PD: Rob Cressman MD: Janda Baldwin 96Wave

WXNR Greenville, NC PD: B.K. Kirkland MD: Ali Taylor new rock 99X

KKDM Des Moines OM: Lee Konfrst MD: Sophia John 107.5

WEQX Albany PD: Ian Harrison MD: Stephen Bottomley 102.7 EQX

WBTZ Burlington PD: Stephanie Hindley MD: Steve Picard 106.5 BUZZ

WJXB Fort Myers PD: Stephanie Bradford AMD/MD: Lee Daniels 99X

WKRL Syracuse PD/MD: Mimi Griswold Modern Rock 100.9 K-ROCK

KHTY Santa Barbara PD: Damion Young APD: Deanne Saffren 106.5 BUZZ



for the **MASSES**

KROQ KTBZ KNDD WHTG

failure enjoy the silence

Q101

the cure world in my eyes

WBRU WLIR

the smashing pumpkins

never let me down again

KENZ

meat beat manifesto

everything counts

KJEE

dishwalla policy of truth



depeche mode

apollo four forty
the cure
deltones
dishwalla
fallop
god lives in nevada
gods
hoop up mic
lucus
meat beat manifesto
monster machine
rabbit in the hat
ramm t sia
s. p.
the smashing pumpkins
veric



www.1500records.com

©1998 1500 Records. Manufactured and Marketed by A&M Records, Inc., a PolyGram company. All Rights Reserved.
World Radio History



a PolyGram company

POWER PLAYLISTS

For Week Ending July 19, 1998



Playlists supplied by Broadcast Data Systems Radio Track service. Songs ranked by number of plays in monitored week.



WGRD Grand Rapids PD/MD: Margot Smith AMD: Tim Bronson



Table with 2 columns: Rank and Song Title. Includes songs like 'Barenaked Ladies, One Week', 'Fuel, Shimmer', 'Dave Matthews Band, Stay'.

KZMZ Minneapolis/St. Paul PD: John Lassman APD: Marc Allen



Table with 2 columns: Rank and Song Title. Includes songs like 'Sarah McLachlan, Adia', 'Eve 6, Inside Out', 'Pearl Jam, Wishkit'.

WQBK Albany PD/MD: Kelli McNamara AMD: Jeff Callan



Table with 2 columns: Rank and Song Title. Includes songs like 'Harvey Danger, Flagpole Sitta', 'Athenaeum, What I Didn't Know', 'Goo Goo Dolls, Iris'.

WBRU Providence PD: Tim Schiavelli



Table with 2 columns: Rank and Song Title. Includes songs like 'Fuel, Shimmer', 'Semisonic, Closing Time', 'Goo Goo Dolls, Iris'.

KNRK Portland, OR PD/MD: Mark Hamilton



Table with 2 columns: Rank and Song Title. Includes songs like 'Beastie Boys, Intergalactic', 'Eve 6, Inside Out', 'Harvey Danger, Flagpole Sitta'.

WEND Charlotte PD: Jack Daniel MD: Rick Brewer



Table with 2 columns: Rank and Song Title. Includes songs like 'Fuel, Shimmer', 'Goo Goo Dolls, Iris', 'Pearl Jam, Wishkit'.

WFNX Boston PD: Cruze MD: Laurie Gail



Table with 2 columns: Rank and Song Title. Includes songs like 'Beastie Boys, Intergalactic', 'Big Bad Voodoo Daddy, You And Me And The', 'The Smashing Pumpkins, Perfect'.

KXRX Salt Lake City PD: Mike Summers MD: Sean Ziebarth



Table with 2 columns: Rank and Song Title. Includes songs like 'Barenaked Ladies, One Week', 'Semisonic, Closing Time', 'Goo Goo Dolls, Iris'.

KCIX Riverside/San Bernardino OM/MD: Dwight Arnold MD: Bruce Pulley



Table with 2 columns: Rank and Song Title. Includes songs like 'Candlebox, It's Alright', 'The Urge, Jump Right In', 'Fuel, Shimmer'.

KENZ Salt Lake City PD: Bruce Jones MD: Dom Casual



Table with 2 columns: Rank and Song Title. Includes songs like 'Barenaked Ladies, One Week', 'The Wallflowers, Heroes', 'Smash Mouth, Can't Get Enough Of You'.

KKND New Orleans OM: Dave Stewart APD/MD: Rod Ryan



Table with 2 columns: Rank and Song Title. Includes songs like 'Fuel, Shimmer', 'Eve 6, Inside Out', 'Marcy Playground, Saint Joe On The School'.

XHRM San Diego PD: Mike Halloran MD: Chaz Kelly



Table with 2 columns: Rank and Song Title. Includes songs like 'The Smashing Pumpkins, Perfect', 'Fuel, Shimmer', 'Eve 6, Inside Out'.

WEDG Buffalo OM: John Hager PD/MD: Rich Wall



Table with 2 columns: Rank and Song Title. Includes songs like 'Everclear, I Will Buy You A New Life', 'Semisonic, Closing Time', 'Garbage, Push It'.

WZAZ Columbus PD: Greg Ausham MD: Mark Pennington



Table with 2 columns: Rank and Song Title. Includes songs like 'Matchbox 20, Real World', 'Goo Goo Dolls, Iris', 'Natalie Imbruglia, Wishing I Was There'.

WPBZ West Palm Beach PD: John O'Connell MD: Dan O'Brien



Table with 2 columns: Rank and Song Title. Includes songs like 'Harvey Danger, Flagpole Sitta', 'Goo Goo Dolls, Iris', 'Natalie Imbruglia, Wishing I Was There'.

WAQZ Cincinnati PD/MD: Matt Harris APD: Sterling Schiessler



Table with 2 columns: Rank and Song Title. Includes songs like 'Edwin McCain, I'll Be', 'Harvey Danger, Flagpole Sitta', 'Goo Goo Dolls, Iris'.

KNRX Kansas City APD: Dave Horn MD: Jason Justice



Table with 2 columns: Rank and Song Title. Includes songs like 'Stabbing Westward, Save Yourself', 'Harvey Danger, Flagpole Sitta', 'Fuel, Shimmer'.

KMYZ Tulsa PD: Lynn Barstow MD: Ray Dog



Table with 2 columns: Rank and Song Title. Includes songs like 'Harvey Danger, Flagpole Sitta', 'Cherry Poppin' Daddies, Zoot Suit Riot', 'Barenaked Ladies, One Week'.

KROX Austin PD: Sara Trexler APD/MD: Lloyd "LA" Hoccutt



Table with 2 columns: Rank and Song Title. Includes songs like 'Eagle Eye Cherry, Save Tonight', 'Barenaked Ladies, One Week', 'Fuel, Shimmer'.

KTCL Denver PD: Mike O'Connor



Table with 2 columns: Rank and Song Title. Includes songs like 'Madonna, Ray Of Light', 'Harvey Danger, Flagpole Sitta', 'Eve 6, Inside Out'.

KKTE Las Vegas MD: Chris Ripley



Table with 2 columns: Rank and Song Title. Includes songs like 'Rage Against The Machine, No Shelter', 'Beastie Boys, Intergalactic', 'Blink 182, Josee'.

WXRA Greensboro PD: Tim Satterfield APD: Marcia Gan

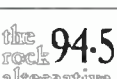


Table with 2 columns: Rank and Song Title. Includes songs like 'Fuel, Shimmer', 'Stabbing Westward, Save Yourself', 'Eve 6, Inside Out'.

WROX Norfolk PD/MD: Al Mitchell



Table with 2 columns: Rank and Song Title. Includes songs like 'Goo Goo Dolls, Iris', 'Beastie Boys, Intergalactic', 'Eve 6, Inside Out'.

WRAX Birmingham PD: Dave Rossi APD: Hurricane Shane MD: Suzy Boe



Table with 2 columns: Rank and Song Title. Includes songs like 'Everything, Hocho', 'Barenaked Ladies, One Week', 'Dave Matthews Band, Stay'.

POWER PLAYLISTS™

AIRPLAY Monitor®

For Week Ending July 19, 1998

Broadcast Data Systems

Playlists supplied by Broadcast Data Systems' Radio Track service. Songs ranked by number of plays in monitored week. Playlists are listed in order of TSA weekly count, beginning with the highest-ranking station. Counts are updated twice yearly following the release of the Spring and Fall Arbitron surveys. The number of stations shown each week varies depending upon space.

KTBB Houston PD: Jim Trapp APD: Steve Robison MD: David Sadoff



Table with 2 columns: Rank and Song/Artist. Top songs include Everclear, I Will Buy You A New Life (44.45), Harvey Danger, Flagpole Sitta (43.47), Garbage, Push It (42.42).

WXDX Pittsburgh PD: John Moschitta MD: Lenny Diana



Table with 2 columns: Rank and Song/Artist. Top songs include Semisonic, Closing Time (40.40), Eve 6, Inside Out (40.27), Barenaked Ladies, One Week (39.39).

KPNT St. Louis OM: Allan Fee APD: Marty Linck MD: Traci Wilde



Table with 2 columns: Rank and Song/Artist. Top songs include Harvey Danger, Flagpole Sitta (36.35), Creed, My Own Prison (35.36), Goo Goo Dolls, Iris (34.36).

CIMX Detroit PD: Murray Brookshaw APD/MD: Vince Cannova



Table with 2 columns: Rank and Song/Artist. Top songs include Goo Goo Dolls, Iris (48.45), Barenaked Ladies, One Week (47.44), Harvey Danger, Flagpole Sitta (45.40).

KEDJ Phoenix PD: Shellie Hart APD/MD: Chris Patyk



Table with 2 columns: Rank and Song/Artist. Top songs include Everclear, Everything To Everyone (49.50), Sublime, Caress Me Down (49.42), Fuel, Shimmer (49.42).

WMRQ Hartford PD: Jay Beau Jones MD: Dave Hill



Table with 2 columns: Rank and Song/Artist. Top songs include Dave Matthews Band, Don't Drink The Water (47.44), Fuel, Shimmer (46.46), The Smashing Pumpkins, Ava Adore (46.46).

KWOD Sacramento PD: Ron Buncie MD: Carla "Raz" Raswyck



Table with 2 columns: Rank and Song/Artist. Top songs include Eve 6, Inside Out (50.51), Everclear, Intergalactic (47.24), Harvey Danger, Flagpole Sitta (47.19).

WENZ Cleveland PD: Dan Binder APD: Ric Bennett MD: No. 1 Son



Table with 2 columns: Rank and Song/Artist. Top songs include Harvey Danger, Flagpole Sitta (51.42), Goo Goo Dolls, Iris (51.42), Eve 6, Inside Out (50.39).

WKDF Nashville PD: Kidd Redd MD: Sheri Sexton



Table with 2 columns: Rank and Song/Artist. Top songs include Matchbox 20, Real World (37.34), Fastball, The Way (37.37), Alanis Morissette, Uninvited (33.30).

WRZX Indianapolis PD: Scott Jameson MD: Michael Young



Table with 2 columns: Rank and Song/Artist. Top songs include Eve 6, Inside Out (36.36), Harvey Danger, Flagpole Sitta (34.32), Marcy Playground, Saint Joe On The School (34.32).

KZON Phoenix PD: Paul Peterson APD: Laura Smith MD: Kevin Mannion



Table with 2 columns: Rank and Song/Artist. Top songs include Harvey Danger, Flagpole Sitta (34.31), Matchbox 20, Real World (32.32), Goo Goo Dolls, Iris (31.31).

XTRA San Diego PD: Bryan Schock MD: Chris Muckley



Table with 2 columns: Rank and Song/Artist. Top songs include Eve 6, Inside Out (35.21), Fastball, The Way (33.36), Marcy Playground, Saint Joe On The School (32.28).



MONSTER MAGNET "SPACE LORD"

ALREADY A MONSTER AT ACTIVE AND MAINSTREAM ROCK: MONITOR ACTIVE ROCK (3) - (2) MONITOR MAINSTREAM ROCK (3) - (3) BLOWING UP AT ALTERNATIVE:

Table with 4 columns of station call letters and counts. Includes WXRK 24x, WBCN 36x, WFNX 10x, WEND 13x, KPNT 20x, WXDX 22x, WEDG 20x, WENZ 18x, KFMA 16x, WKRO 18x, KKND 21x, KTOZ 12x, KXTE 19x, WPBZ 27x, WWCD 17x, WRZX 14x, WROX 16x, WQBK 11x, KICT 16x, KROX 18x, WLRS 30x, KHXY 16x, KMYZ 10x, WBZU 14x, KDRE 22x, KFTE 15x, WBRU 13x, WCYY 19x, CFNY 18x.

"It jumps off the radio... top 3 phones." - Oedipus, WBCN

OVER 35,000 ALBUMS SCANNED IN JUST THREE WEEKS



