

# ROCK AIRPLAY Monitor

• We Listen To Radio •

May 30, 1997 \$4.95 Volume 4 • No. 22

## ROCK HIGHLIGHTS

### MAINSTREAM

#1

#### SAMMY HAGAR

*Little White Lie* (TRACK FACTORY/MCA)

★★★ AIRPOWER ★★★

NO RECORDS QUALIFIED FOR AIRPOWER THIS WEEK

### GOING FOR AIRPLAY

BLUES TRAVELER • *Carolina Blues* (A&M)  
 CRAVY "MELON" • *Sweet Tea* (MERCURY)  
 FASTBALL • *Are You Ready For The Fallout?* (HOLLYWOOD)  
 BEN HARPER • *Faded* (VIRGIN)  
 MANSUN • *Wide Open Space* (EPIC)  
 THE SEAHORSES • *Love Is The Law* (Geffen)  
 SON VOLT • *Cary'd Easy* (WARNER BROS.)  
 THIN LIZARD DAYIN • *Weed* (RCA)  
 WILCC • *Monday* (EPRISE)

### MODERN

#2

#### THIRD EYE BLIND

*Semi-Charmed Life* (ELEKTRA/JEAG)

★★★ AIRPOWER ★★★

THE SMASHING PUMPKINS • *The End Is The Beginning Is The End* (WARNER SUNSET/WARNER BROS.)

### GOING FOR AIRPLAY

FIONA APPLE • *Criminal* (CLEAN SLATE/WORK)  
 BETTIE SERVEETT • *Rudder* (MATADOR/CAPITOL)  
 BLUES TRAVELER • *Carolina Blues* (A&M)  
 ECHO & THE BUNNYMEN • *I Want To Be There (When You Come)* (LONDON/ISLAND)  
 BEN HARPER • *Faded* (VIRGIN)  
 MANSUN • *Wide Open Space* (EPIC)  
 PRODIGY • *Breathe* (XL MUTE/MAVERICK/WARNER BROS.)  
 RADIO ODINE • *Things I Do* (RADIO UNIVERSE/UNIVERSAL)  
 THE SEAHORSES • *Love Is The Law* (Geffen)  
 SUGAR RAY • *Fly* (ATLANTIC)  
 TRICKY • *Makes Me Wanna Die* (ISLAND)

### TRIPLE-A

#3

#### THE VERVE PIPE

*The Freshmen* (RCA)

★★★ AIRPOWER ★★★

NO RECORDS QUALIFIED FOR AIRPOWER THIS WEEK

## No Cure For Summer Jam Blues: Begging Resumes, Cuts Coming?

by Kevin Carter  
and Marc Schiffman

With promoters and PDs at rock and top 40 locked in semiannual negotiations over acts for station concerts, some label execs say they're finally fed up enough to withdraw their support for such events once and for all.

A glance at the number of concerts still scheduled for this summer shows that nobody's made good on this threat, altogether, but several reps say privately that they've already cut back on the availability of A-list acts or concentrated their resources on larger markets. As one rep, who, like most of his counterparts, asked not to be named, puts it, the game plan is now "attempting to superserve the major markets, the ones who are actually breaking the record, the markets where it truly makes a difference, without going broke. The payoff has to equal the payout."

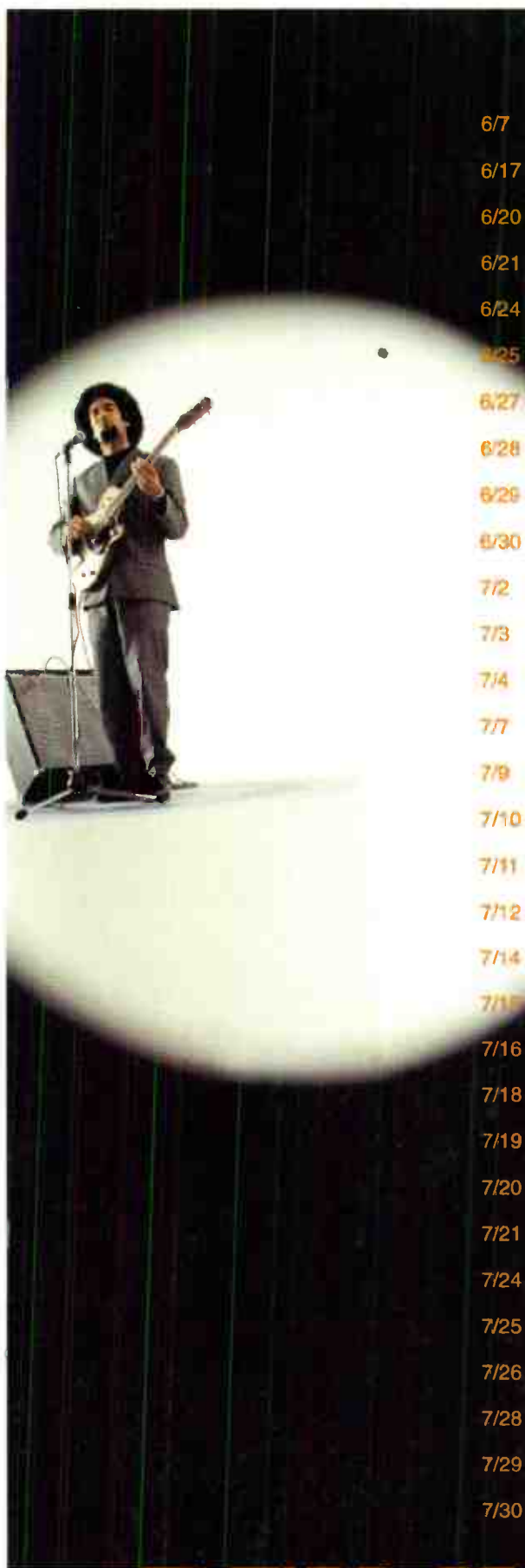
And even major markets, some reps say, are getting less. At least two cite the lineup of WXKS-FM (Kiss 108) Boston's Kiss Concert, set for May 31. Long considered the mother

of all station concerts, this year's Kiss Concert lineup remains extensive but relies heavily on developing or re-launched acts.

Many label complaints about station shows have changed from last year only in intensity. Among the perennials: Stations don't support the acts they procure with meaningful airplay; stations want only major acts; and with PDs increasingly obsessed with their shows, it's too difficult to discuss music. "If we can't take care of them right now, they don't want to hear about our records or our priorities," says one exec.

"The whole thing is ridiculous," says one VP of promotion. "Radio shows are just not cost productive, and at the end of the day it's the artist who ends up getting hurt. It's difficult to remain a viable touring act while giving yourself away for free. When an audience can see a band for free or on a discounted ticket along with 10 other acts on a radio bill, that hurts that artist's ability to come back as a solo act at a later date. It dilutes that artist's impact."

Continued on page 4



### ON TOUR NOW:

- 6/7 NEW YORK, NY
- 6/17 ATLANTA, GA
- 6/20 WASHINGTON, DC
- 6/21 PHILADELPHIA, PA
- 6/24 NEW YORK, NY
- 6/25 NEW YORK, NY
- 6/27 BOSTON, MA
- 6/28 NORTHAMPTON, MA
- 6/29 EDGARTOWN, MA
- 6/30 CHARLOTTE, VT
- 7/2 MONTREAL, QUE
- 7/3 QUEBEC CITY, QUE
- 7/4 TORONTO, ONT
- 7/7 PONTIAC, MI
- 7/9 CHICAGO, IL
- 7/10 CHICAGO, IL
- 7/11 MADISON, WI
- 7/12 MINNEAPOLIS, MN
- 7/14 BOULDER, CO
- 7/15 DENVER, CO
- 7/16 SALT LAKE CITY, UT
- 7/18 PORTLAND, OR
- 7/19 SEATTLE, WA
- 7/20 VANCOUVER, BC
- 7/21 VICTORIA, BC
- 7/24 SAN FRANCISCO, CA
- 7/25 SAN FRANCISCO, CA
- 7/26 SACRAMENTO, CA
- 7/28 SANTA ANA, CA
- 7/29 LOS ANGELES, CA
- 7/30 LOS ANGELES, CA

# BEN HARPER

## "FADED"

### GOING FOR ADDS NOW!

THE FIRST SONG FROM THE NEW ALBUM

THE WILL TO LIVE

Produced by J.P. Plunier • Management: J.P. Plunier

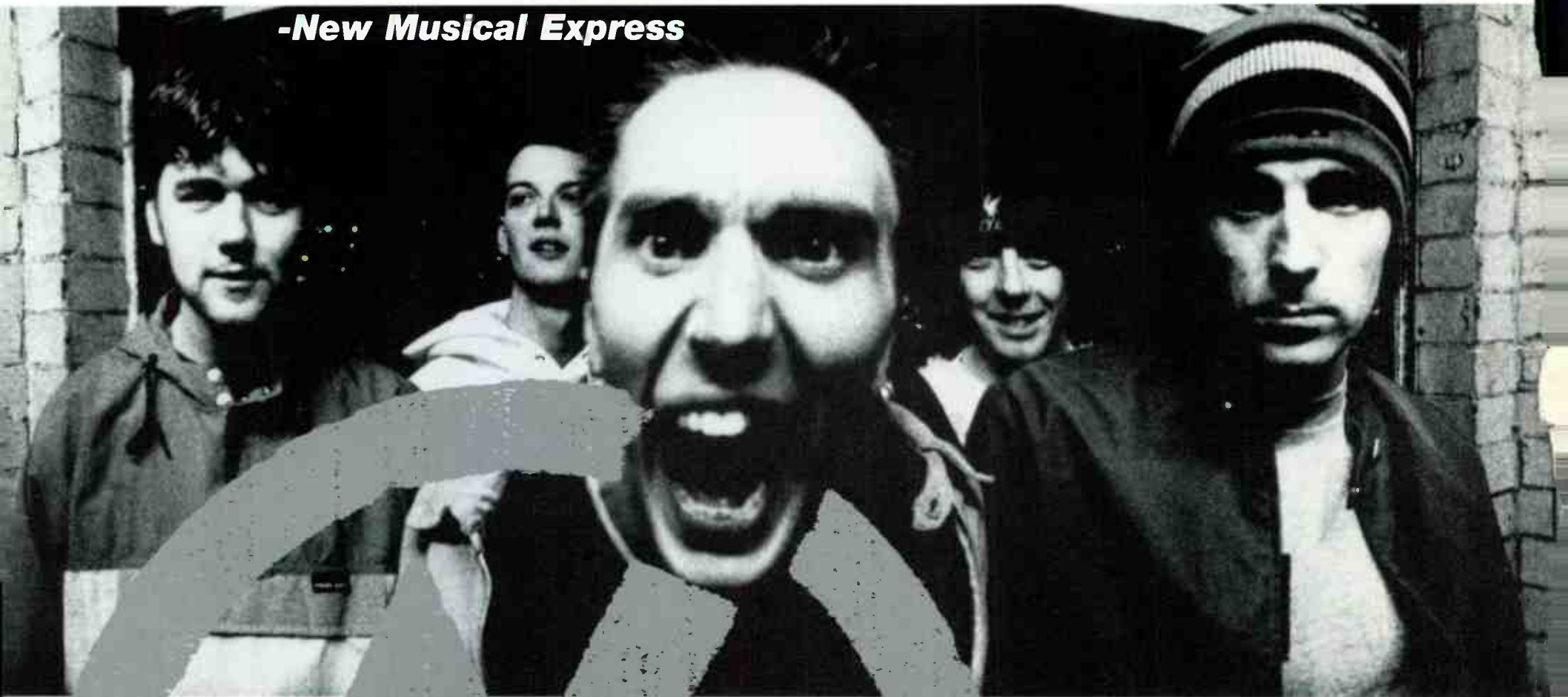
AOL Keyword: Virgin Records • <http://www.virginrecords.com>

©1997 Virgin Records America, Inc.



**“...Like a rhythmic air raid...”**

**-New Musical Express**



# **ManBREAK**

## **“Ready or Not”**

**The First Track  
From The Debut Album  
Come and See,**

### **Alternative**

**Already on 30 stations  
in two weeks**

### **Rock**

**#1 most added Active Rock  
Already on 60 stations**

Produced by Stephen Hague



[www.almosounds.com](http://www.almosounds.com) ©1997 Almo Sounds, Inc.



## RADIOACTIVE BY MARC SCHIFFMAN

### Hundt To Exit FCC; Miller Vs. Muller

**F**CC chairman **Reed Hundt** is resigning his post. In a May 27 letter to President Clinton, Hundt said, "I believe it is time for a new group of commissioners to join Commissioner Ness in carrying out the Commission's future mission; and I know it is time for me to devote much more attention to my family. . . . As the Commission turns to its new challenges, I respectfully request that you commence the process of selecting my successor. I would intend to continue to serve at the Commission until you replace me as chairman." In another bin at the oval office, President Clinton has advanced the names FCC General Counsel **Bill Kennard** and economist **Harold Furchtgott-Roth** as nominees for the Democratic and Republican FCC seats.

The Kansas City Star reports that country **KBEQ** morning man **Randy Miller**, his wife, and mother have filed a suit charging syndicated morning man **Mancow Muller** with slander. Muller's program airs in Kansas City on modern **KISF**. Other defendants in the suit are the station; its owner, **SYNCOM**; Muller flagship outlet album **WRCX** Chicago; and Radio & Records for publishing a letter from Muller. The suit is asking for \$975,000 in actual and punitive damages and an injunction forbidding Muller to interfere in the private life of Miller and family. Mr. Cow's good news this week is the addition of active rock **KAZR** Des Moines, Iowa, to his morning network.

Hot AC **KDMX** Dallas GSM **Dennis C. Frawley** gets the GM office at sister album **KEGL**. **Lee Abrams** is now consulting the station. Meanwhile, Monitor has it on relatively good authority that morning market leader **Howard Stern's** contract with **KEGL** isn't likely to be renewed, now that **KEGL** is owned by Nationwide. Frawley would not speculate on Stern's future.

**Bud Paxson's** buying spree continues with the company getting four West Palm Beach, Fla., outlets from **ARS**, including album **WKGR**.

**Eletra Broadcasting** sells its Monterey, Calif., outlets, triple-A **KPIG**/modern **KCDU**/jazz **KXDC** to New Wave Communications for \$5.3 million.

#### FORMATS: KYYS REFOCUSES

Now that he's on board, album **KYYS** Kansas City PD **Jeff McMurry** has shifted the station's music. According to McMurry, the station is drifting toward triple-A with enough blues in the mix to distract it from its rock mission. He's brought it back to a more current, rock-focused station.

After a week of stunting, former AC outlet **WLRS** Louisville, Ky., landed in the modern camp after Memorial Day weekend, becoming "the new rock alternative." OM **C.C. Matthews** is overseeing the station, along with PD **John Robertson**—held over from the old format. The station is calling itself **LRS 102**, harking back to its rock days, and is running jockless. Across the street, classic rock **WQMF** is prepped to dive into the mainstream rock pool before the end of June.

Several weeks after classic rock **WMMQ** Lansing, Mich., began simulcasting its signal on cross-town album **WVIC's** 94.9 frequency, the simulcast has been split off. Now **WMMQ** and classic rock reside on 94.9, while the **WVIC** calls transfer to **WMMQ's** old 92.7 frequency, which is now broadcasting a religious format.

Album **KOCD** Joplin, Mo., flipped to country over Memorial Day weekend. The entire staff exits, with the exception of morning co-host **Big Al**.

#### PROGRAMMING: BLOOM BACK IN RADIO

Chancellor shifts management roles among its Minneapolis properties. Triple-A/top 40 **KTCZ** (Cities 97)/**KDWB** VP/GM **Marc Kalman** adds **WBOB** (Real Rock 100) to his station stable. Album programming vet **Andy Bloom** leaves Coleman Research, where he was executive VP, to be OM for **WBOB/KTCZ**. Cities 97 PD **Lauren MacLeash** adds PD duties at **WBOB**, moving **WBOB** PD **Bob Wood** to the PD seat of oldies sister **KQQL**.

Album **WEZX** Scranton, Pa., PD **Rob Lipshutz**

is now OM, adding oldies **WQFM** and adult standards **WEJL** and **WBAX** to his purview. Promotion director **Tony Policare** becomes marketing director and **WEZX** P/T **John Pullo** is now promotion coordinator for all four stations. Former **WEZX** promotion director **Eric "the Prospector" Logan** returns for P/T from the same at rival **WZMT**. Elsewhere in town, **WZMT** PD/middayer **Jack Meyers** exits.

After signing on **ARS** modern adult outlet **WLCE** (Alice @ 92.9) Buffalo, N.Y., **Mike Edwards** has accepted another programming position. **Jim McGee** joins from P/T at crosstown **WEDG** (the Edge) for a full-time shift to be announced. **WLCE** GM **Jeff Silver** needs a PD.

Album **WIXV** Savannah, Ga., PD/middays **Anthony Michaels** becomes director of programming for **WIXV/R&B** **WSGF**/talk **WBMQ**. **WIXV** afternoon host **Keith Hendriks** adds APD stripes.

Country **WOOZ** Carbondale, Ill., PD **Scott Cox** is named director of programming of Zimmer Radio Group for Southern Illinois, which includes classic hits **WXLT**, hot AC **WCIL-FM**, and N/T **WJPF/WCIL-AM**.

Triple-A **KOTR** San Luis Obispo, Calif., PD **Drew Ross** adds OM duties at mainstream **KWBR** now that the station is in an LMA with **KOTR**. **KWBR** acting PD/MD **Joe Alvino** gets the official PD title, while night jock **Megan Ray** moves to middays and adds promotion duties. **Brett Daniels** segues from P/T to nights. Back at **KOTR**, **Steve R.C.** is named production director/middays after a long absence from radio.

With the departure of album **WTBB** Panama City, Fla., PD/p.m. driver **Brian "Beaver Stevens" Holmes**, middayer **Rob Roberts** gets interim PD duties and moves to afternoons. **Yoda** moves from nights to middays; P/T **Diablo** gets nights.

#### PEOPLE: WMMR SWAPS SHIFTS

Album **WMMR** Philadelphia PD/afternoon host **Joe Bonadonna** leaves the air to concentrate on programming. **Bubba John Stevens** shifts from nights to afternoons; morning co-host **Elise Brown** takes the evening opening. P/T **Frank Lario** steps into overnights. **Lario** remains PD at modern **WDOX** Atlantic City, N.J.

Modern AC **KBBT** (the Beat) Portland, Ore., inks **Brian** and **Brian** for mornings from album **KBER** Salt Lake City. To avoid conflicts with the syndicated **Mark** and **Brian** show across the street at classic rock **KGON**, the guys are calling themselves **Bob** and **Bob**. **Cheryl Kaye** remains co-host.

Album **WFYV** Jacksonville, Fla., MD/night jock **Derek Myers** has left the building.

**Jacnet Jackson** trades modern **WPGU** Champaign, Ill., for modern **WWDX** Lansing, Mich., where he picks up MD duties.

Boise, Idaho, veteran **Carl Scheider** returns to radio at triple-A **KFXD** as MD/afternoons.

Modern adult **WDBZ** (the Buzz) New York middayer **Judy Franco** exits.

Mainstream rocker **WRZK** Johnson City, Tenn., staffs up with **Dave Barnett** in mornings from nights at sister AC **WTFM**; middays are handled by newcomer **Angela**, and **Scott Highland**, former PD at N/T sister **WKPT**, takes on afternoons. **Cole Buchanan** will handle P/T.

**Luke Sanders**, last in nights at **WTKI** Milwaukee, crosses the street as production director/middays at Saga modern AC **WXPT** (106.9 the Point). Modern **WPLA** Jacksonville, Fla., picks up **Jacor's** syndicated "LovePhones" for late nights.

Album **WPYX** Albany, N.Y., P/T **John Clark** gets overnights at the station.

Modern **KLYY** Los Angeles marketing director **Eileen Woodbury** returns to crosstown R&B **KKBT** as promotion/marketing director for the station after a year's absence, replacing **Dianna Obermeyer**, who exits.

P/T **Mike Edwards** moves to overnights at album **WBYP** Fort Wayne, Ind..

Video aircheck magnate **Art Vuolo** is planning a reunion of Detroit radio personalities, set for next April.

### Karmazin Adds TV Oversight To Duties

CBS Radio chairman/CEO **Mel Karmazin** has been named chairman/CEO of the newly formed CBS Station Group, adding to his oversight of 77 CBS radio stations an additional 14 owned and operated TV properties.



Karmazin

The change is in anticipation of Westinghouse Electric Co.'s planned

splitting off of its media businesses this fall and follows the growth of Karmazin's career from head of Infinity Broadcasting through its merger with CBS and Group W. CBS' TV and cable businesses will report directly to Westinghouse chairman/CEO **Michael H. Jordan**. That includes network operations and production and syndication companies. CBS Television and Cable Group president/CEO **Peter Lund** exits.

MARC SCHIFFMAN

## PERSONNEL FILE BY ANTHONY COLOMBO

### EMI Closes New York Office

**E**MI Music closed its corporate office in New York this week, resulting in the loss of approximately 35 jobs. Among those departing in the wake of the shake-up are EMI Records Group North American chairman/CEO **Charles Koppelman** and executive VP/GM **Terri Santisi**. **Ken Berry** is named president of EMI Recorded Music and will assume responsibility for all U.S. music operations. He was president/CEO of EMI Music International and chairman/CEO of Virgin Music Group since 1994. EMI's North American headquarters is now located in Los Angeles.

The Work Group names **Geordie Gillespie** VP of alternative promotion. He had been director of alternative promotion since 1995. Gillespie joined the label in 1992, when it was known as Chaos, as national director of alternative/dance promotion.

Earache Records names **Rob Gill** director of promotion and marketing and **Jon Paris** director of media relations. They were, respectively, director of metal promotion at McGathy Promotions and senior publicist at Myers Media.

Restless Records names five new staffers to its promotion department. **Todd Bisson** is named West Coast senior national director based in Los Angeles, and **Tod Elmore** is named East Coast senior national director based in Atlanta. Stepping in as regional promotion directors are **Seth Gershman** based in New York and **Sharon Doheny** based in Chicago. Also, **Jeanette Rosen** joins as specialty show/promotion coordinator based in L.A.

At Mercury, Baltimore/Washington, D.C., local rep **Pam Trickett** exits. **Lynne Salivaras** transfers from the Cleveland local slot to fill the vacancy.

### Free Falling



That's **KSJO** San Jose, Calif., MD **Laurie Free** caught "getting high" on film. Free touched down safely and is not expected to start holding music meetings at 20,000 feet any time soon.

### Trauma Sues Interscope Over No Doubt

Billboard Bulletin reports that Trauma Records has filed a \$100 million-plus lawsuit against Interscope Records and its owners, **Ted Field** and **Jimmy Iovine**, over the rights to multiplatinum act **No Doubt**. The suit, filed May 23 in Los Angeles Superior Court, stems from the labels' 1994 joint venture, in which Trauma agreed to produce, promote, and market artists on its roster for the mutual benefit of both labels, with Interscope providing financing and distribution.

In the suit, Sherman Oaks, Calif.-based Trauma claims that before **No Doubt's** breakthrough, Interscope lost faith in the band, then

an Interscope act, and reassigned the band's rights to Trauma in 1995, agreeing "that **No Doubt** would be treated as a Trauma artist" and therefore subject to the joint-venture terms. Among other allegations, the suit says that Interscope knew all along that it would deny the **No Doubt** rights reassignment if the band became successful.

The lawsuit seeks the termination of the joint venture and the exclusive assignment to Trauma of all rights to the Trauma roster, including **No Doubt** and **Bush**. Interscope could not be reached for comment.

MICHAEL AMICONE

## No Cure For Summer Jam Blues: Begging Resumes, Cuts Coming?

Continued from page 1

Another VP says stations are still under the impression that labels have bottomless pockets. "It's out of control," that rep says. "Even a track act with a couple of dancers, a road manager, and a sound person can cost us a minimum of \$5,000 to transport across the country." A full band can cost \$20,000. Another rep says that while many stations provide only ground transportation and hotel trade-out, "They don't realize it costs us from \$7,000 to \$12,000 per day to keep a band on the road."

At least one label exec is trying to take a proactive approach to the whole issue. Says A&M VP of rock promotion Mike Rittberg, "Earlier this year, I sent out a letter to radio stations that said, 'If you have a show going on this year or any show that you know about right now, send this form back to me, fill it out, and I'm going to create from that a database. So, basically I have the date, the station, the event, is there a particular artist that you want. Give me a contact. Let me know if there's a budget. What are you going to provide for my band? Is it a charity? Give me the details. From that, now if it makes sense for one of my bands to do something, I have all the information' . . . And then I can tell the people that really have their act together and what events are big or is it something that 'Hey, we're doing it because our competition has a show coming.'"

Still, Rittberg says, "It's still a lot of arguing [about] 'We played them a week before [our competition] did. Why are we getting them second?' . . . If you do something neutral then everyone complains, 'Well, it's not mine. I'm not doing anything.' And if we do something proactive, which is what we have to do because it's in the best interest of our band, then somebody always has to go first and somebody always has to go second. And we just try to tell whomever has to go second to be patient with us and here's our date that we're going to do something with you."

Despite this, Rittberg sees station shows as "a great way to get our bands—and most of these are baby bands—exposed to a great number of people at once . . . Until the positives slip below the negatives, this is always going to happen."

### STATIONS RESPOND

WXKS-FM PD John Ivey sees concert dates as the label side of the bargain. "During the course of the year, we're asked to put our balls on the line and take a chance on a new artist. The truth of the matter is, some stations are breaking records; some aren't. Some stations have great ratings; some don't. The point is, we're doing these artists and record labels a great service. This business is not a one-way street, and it never has been."

"Record labels should expect to do this, especially in light of the fact that many of these baby acts alone couldn't sell out a 20,000-seat venue like [Kiss 108's venue] Great Woods, but we're [putting them] in front of all these people," Ivey adds, citing the national coverage the show generates. "It's not like I'm asking them to come here and wash my car. I'm asking them to come and play in front of 20,000 people who happen to like their song."

Other PDs say they're rethinking their shows so that artists don't feel used. Modern WHYT Detroit PD Garrett Michaels says that sometimes includes "making sure they get to play longer sets, so it's not just like they come out and do four songs and they're gone. We want the artists to feel good about doing this show. We don't want the artists to feel, 'Here's another thing the record label made us do, when we could be playing some

other gig and making more money off it.'"

At modern WNVE (the Nerve) Rochester, N.Y., director of programming Erick Anderson tries to hone in on bands that are about to break. "I think there's still an openness from labels to do shows, depending on the bands you pick. If you're going out there trying to get Offspring, you're going to have one bitch of a time . . . If you're going out there trying to get Eddie Vedder to come MC your show, you're smoking crack. The key is . . . to pick those bands months out and make sure you've got hits by the time they get there. It requires an ear and work. It's not as easy as saying, 'OK, who can I get for adding a record this Tuesday.' The people that are doing that are losing."

WDCG (G105) Raleigh, N.C., is readying its Big Shindig for June 1 featuring Shawn Colvin, Duncan Sheik, Poe, Verve Pipe, Sister Hazel, Cowboy Mouth, Barenaked Ladies, and others. G105's Christmas show, featuring Duncan Sheik, Squirrel Nut Zippers, and Barenaked Ladies was, like the station, a major part of the story behind those three acts' breakthroughs and became "a true musical event, not just a party," says PD Kip Taylor.

Taylor adds, "We've enjoyed a tremendous amount of cooperation this year, and I'd like to think that the caliber of this event will cause the record community to look back favorably and want to be involved next year."

G105 took a lesson from other successful summer events like the KMEL San Francisco Summer Jam. "KMEL made their mark by creating a bond with their artists," Taylor says. In the same fashion, G105 has closely aligned itself with many new area bands, including Emerald Pool and Lustre. "We have a personal relationship with these artists, as well as Epic's emmett swimming, who came up through the Carolina region, much like like Hootie & the Blowfish, Cravin' Melon, and the Dave Matthews Band. They've already laid the groundwork, and I think it behooves both of us to do something together," he says.

### WHY STATIONS SOLDIER ON

So, with the record/radio relationship often strained over concerts, is it still worth it for radio stations to put so much effort into summer concerts, often starting as soon as they finish arguing over Christmas acts? Most say yes, although they wish other stations—particularly those new to the game—would stop muddying the waters.

"It pays off immensely, both in terms of big ratings and image enhancement," says Kiss 108's Ivey. "This is the premiere top 40 show in the country, and I hope that fact gives us some leeway in booking acts."

"There will always be a Weenie Roast at [modern KROQ Los Angeles] because that's history for them," says WNVE's Anderson. "We'll always have a birthday concert. That's history for us . . . [Modern WHFS Washington, D.C.] can't not do the 'HFS-ival. They are one of the gods of doing shows. You look at what they do with their show and you go, 'Wow, that's just so next-level. That's what you've got to shoot for.' And on the scale of what they do, it's amazing."

But Anderson foresees that "someday in the not-too-distant future, there will be less people doing shows," as stations decide to focus again on their on-air product. He also worries that younger PDs think, "We're going to do a show and we're going to get a lot of ratings and we're going to win the book because we had a show.' That is just so not how it works. In fact, most times when people have shows, their ratings go down. Ask [former modern WKQX Chicago PD] Bill Gamble. And that's not a rag on him; that's out of his own mouth."

"If you have not done shows before and all the rigmarole, you've got to go through it to get it done," cautions Michaels, "I think it might be something you want to consider not doing. If you are new to the concert game as a radio station and have never done it before, I don't know that it's worth it." If a station is coming to the table late, "the impact of you doing [a show] doesn't really make a difference anymore. The uniqueness is gone. It's not really an advantage."

## MONITOR PROFILE

### Isley Takes Modern Rocker The Edge Toward A Second Heyday

**M**odern KTEG (the Edge) Albuquerque, N.M., PD Skip Isley came aboard in January but already has one feather in his cap, as the Edge moves back toward its heyday numbers, moving 5.7-3.6-3.6-3.9-4.6.

Isley was previously APD/promotion director at modern WMRQ Hartford, Conn. There, PD Brian Krysz brought Isley out of his hiatus from radio and gave him a strong hand in station operations. When Jay Beau Jones picked up the PD reins, Isley says, "I was fortunate enough to be in a situation where I had a lot more control and input than I would have had in a normal situation. It's just that those were very extraordinary times and circumstances that allowed that to happen, and I was able to benefit from it."

As for the Edge's winter success, Isley says that was easy. The hard part is bringing it back to its former stature. "There were so many problems when I got here that fixing the problems was going to get us to a 4.6."

"When I got here, they were playing Marilyn Manson and Tool around the clock," Isley adds. "They owned males 12-24, and that was about it. So the first move, musically, was to make it a more inclusive radio station. We were

ternative . . . and decided to switch KZRR, which . . . was a heritage rock station for a long time, back to rock. And so they really weren't competing head to head anymore, but I think the people that were in this building, thought, in their minds, they were still competing with them. And they got into that whole battle of who's going to out-hip whom and who's not going to play the wimpy music."

Between the records, Isley had an air staff with low morale. "My jocks literally had no aircheck sessions for a year, with part-timers who never had aircheck sessions," Isley says. "This is not a slam on the former PDs here, but there was a really good base of talent here, but they just had no direction. Every shift was sounding different. There was no consistency. Nobody had a sense of what the station's goals were or what we were supposed to sound like, who our audience was, or how to talk to them. So there was a lot of Radio 101 basics—just getting everyone on the same page."

While modern stations across the country struggle with creating a strong morning show, Isley sees his morning man, Moxey, as a gold mine of undeveloped talent. "It was just a DJ doing mornings," he says. "And this guy's got . . . the most potential I've heard in small-market radio in the country right now. So, a lot of my attention has gone into that, working with him every day, developing stuff for the morning show. He's loaded with personality. He just had nobody working with him."

With budgetary constraints, Isley can't give Moxey a co-host just yet. For now, Isley and Moxey concentrate on giving the illusion of more than one person on the show through "other elements from the audience, interviews, and stuff like that," as well as better use of the station's show-prep service. "So now we're getting in our one or two interviews a week. He's got callers. He's got contests. We're just trying to create some interaction with the audience in the mornings so that people are paying attention, for starters. We want to condition them to listen to him for what he has to say."

Nights were another problem area. Curiously, while other stations have great success cranking up the volume at nights, KTEG was "playing all this hard music, [and] the night numbers were horrible," Isley says. He gave Julie Hoyt back her MD stripes and then gave her the night shift. "She's got a guy who started out as an intern here," Isley says. "He's 17, and he's part of her show now and just really interactive with the audience. They went from a 6 to a 15 in one book. That was something that I felt we should have had already."

He's followed that up with "LovePhones," which Isley knew from his Hartford days. Curiously, there has been no community outcry. "Which scares me," Isley says. "Where are the calls from the department of education? Where are the concerned parents? This area's kind of new age/UFO . . . but I still thought it would be conservative enough that there would be some sort of outcry. But so far, none. I've yet to talk to a parent or a teacher or get an angry letter or anything. That worries me. We got a lot of that in Hartford, and we had huge numbers right away. I'm hoping that doesn't mean it will take a long time to work here."

"I think that we are in a position in this market to be in the fives solidly and be around for a long time. And that's where the challenge comes in, becoming a radio station, becoming part of this community, long term. And that's what we're working on now."

MARC SCHIFFMAN



**Skip Isley**  
Program Director  
KTEG Albuquerque, N.M.

*"There was a lot of Radio 101 basics—just getting everyone on the same page"*

basically telling women, 'Go listen to something else.' And I don't know of any alternative station in the country that's successful with just men. I realize it's shifted a little more toward the male over the years, but if you look at your P1 core audience, it still never gets out of the 60-40 [range], and we were way out of it."

While Tool remains in the mix, it's more departed now, Isley says. "We were also in a situation here where our competition for our demographic, 18-34, is extremely urban. So there were lots of hit records out there, like the Cardigans, Sheryl Crow, the Wallflowers, Jewel, and things like that that were getting no airplay in the market. So it wasn't an image problem for us to go and claim them. And in one book, we were able to see our women numbers just shoot right back up."

Here's a sample hour on KTEG: Tonic, "If You Could Only See"; Smashing Pumpkins, "Today"; Beck, "The New Pollution"; Gin Blossoms, "Alison Road"; Cardigans, "Love-fool"; Green Day, "J.A.R."; Live, "Turn My Head"; Better Than Ezra, "Good"; Sneaker Pimps, "6 Underground"; Local H, "Bound For The Floor"; Rancid, "Time Bomb"; INXS, "Elegantly Wasted"; and Cake, "The Distance."

To Isley, KTEG was locked in a battle that was long over. "There was a period of time when they competed directly with KZRR, which went alternative for a year or two," says Isley. "Trumper came in and bought all these stations, did research, found out the Edge had the much stronger image in the market for al-

## ON THE AIR

Effective this week, KKND (the End) New Orleans (PD Vince Richards, MD Rod Ryan, 504-524-5158) is added to the modern rock panel. There are now 79 modern rock reporters.



## CHEET SHEET BY MARK MARONE

### Summertime Shakes Some (Class) Action

The first time the two creative forces behind **Summertime**'s high-energy, hook-laden power pop met, it wasn't over a few beers at a party or the result of a successful want-ad search. It was as classmates during senior year of high school. And for **Beatles**-fanatic **Sean McCue**, who was taking senior economics at Santa Barbara (Calif.) High School, there couldn't have been a better discovery about the classmate whom he was going to have to sit next to for that whole year than that **Tim Cullen**, too, played guitar. After some class-time Walkman listening sessions of each other's 4-track home recordings revealed a shared affinity for pop music, McCue and Cullen struck up a friendship, then a songwriting partnership during their first year at City College together.

A decade and dozens of songs later, that partnership has culminated in the release of their 12-song Maverick debut, "Pure Juice." Besides showcasing their knack for classic pop harmonies and arrangements, **Summertime**'s debut reintroduces elements that have been dormant in pop music of late, particularly the classic '70s guitar solos contributed by McCue and Cullen. Meanwhile, drummer **Tony Sevener**'s grooves and sense of dynamics push the songs ahead, especially live.

**Summertime**'s beginnings are inextricably tied to the Santa Barbara scene. Three of four of its members grew up there, and drummer Sevener, who grew up in central California, has been there for the past eight years. With its small population centered on the tourism and service industries, Santa Barbara has all the ingredients for a close-knit music community to flourish. "Everybody's really supportive of everybody else. The 'scene' is the musicians," says McCue, who remembers Christmases at his grandmother's house that were marked by jam sessions involving his musical cousins and his uncle and session drummer **Jim Keltner**. Friends in other bands such as **Dishwalla** and **Toad The Wet Sprocket** are part of a network that flourishes because of the mutual respect and support musicians show for one another.



From left, Sean McCue, Tim Cullen, Misha Feldmann, Tony Sevener

In fact, it was **Dishwalla** that brought the band to its manager's attention, and McCue recalls a recent conversation where **Toad's Glen Phillips** told him, "God, this is a special place because everybody supports everybody else."

Though McCue and Cullen continued to write together and separately through the years, it wasn't until a mutual friend's birthday blowout that the band took shape. For **Silver Jet** singer **Luke Tierney**'s party, musician friends from the area would put together one-off bands, give the loose ensemble an absurd name, and play some covers and a few original songs on board a boat cruise that became known as **Boozeacarusia**. **Summertime**'s members, recalls Cullen, played songs from the era they grew up in, namely everything from **ELO's** "Don't Bring Me Down" to **Rufus**' "Tell Me Something Good" and **Cheap Trick's** "Oh Caroline." When searching for a name months later after Sevener joined in 1994, the band laughingly recalled the name and decided to reclaim it.

While Santa Barbara proved to be the ideal place to hone their skills and play gigs, allowing them to develop organically, **Summertime** eventually had to bring its show down to Los Angeles, but not without the help of its recently migrated friends, **Silver Jet** and **Sparkler**. Both demonstrated goodwill toward the band, offering it the opening slots whenever gigs could be secured. **Summertime** would reciprocate by doing the same thing in Santa Barbara. Cullen credits this sort of exchange program with helping the band get the live experience necessary to attract the major labels, which began flocking to see it in 1995. It signed with **Maverick** the following year.

The June 24 album debut will be immediately followed by appearances at some high-profile festivals this summer, including dates at this year's **Lollapalooza** shows and an appearance at the **Mount Fuji Festival** in Japan, which features **Foo Fighters** and **Rage Against The Machine**, among others. For McCue and Cullen, it won't be their first time out of the country together: They spent the summer six years ago busking around Austria and Switzerland with acoustic guitars. But somewhere in their travels this summer together they'll probably be expressing their gratitude for their high school economics teacher's seating arrangement.

### Releases And Notes

As a kick-off to a 40-city tour this summer, **Queensryche** will play a secret concert at a remote desert location in New Mexico June 5 to tie in with its seventh album, "Hear In The Now Frontier." The Seattle-based band is expected to play a 45-minute set followed by a half-hour interview session. The performance will be broadcast via satellite to stations around the country.

EDITOR IN CHIEF: HESTON HOSTEN  
 EDITOR: SEAN ROSS  
 MANAGING EDITOR: MARC SCHIFFMAN  
 MAINSTREAM ROCK/TRIPLE A CHART MANAGER: ANTHONY COLOMBO  
 MODERN ROCK CHART MANAGER: MARK MARONE  
 WRITER/REPORTER: DANA HALL  
 CHART PRODUCTION MANAGER: MICHAEL CUSSON  
 ASST. CHART PRODUCTION MANAGER: ALEX VITOULOS  
 EDITORIAL PRODUCTION MANAGERS: BARRY BISHIN, MARCIA REPINSKI  
 EDITORIAL PRODUCTION: MADELINE CARROLL, SUSAN CHICOLA,  
 MARC GIAGUINTO, SARAH JOHNSON, MARIA MANLICIC  
 COPY EDITOR: CARL ROSEN  
 ADVERTISING PRODUCTION MANAGER: LYDIA MIKULKO  
 ASSOC. ADVERTISING PRODUCTION MANAGER: CINDEE WEISS  
 ADVERTISING ART DIRECTOR: RAY CARLSON

GENERAL MANAGER: JON GUYNN  
 ACCOUNT MANAGERS: JACK FULMER, GARY NUEL  
 SALES ASSISTANTS: EVELYN ASZODI,  
 ERICA BENGTON, TODD MAYCHER, ALYSE ZIGMAN

EDITORIAL ADVISER: TIMOTHY WHITE  
 PRODUCTION DIRECTOR: MARIE GOMBERT  
 DIRECTOR OF MARKETING: ELISSA TOMASETTI  
 CIRCULATION MANAGER: JEANNE JAMIN



PRESIDENT: HOWARD LANDER  
 SENIOR VP/GENERAL COUNSEL: GEORGINA CHALLIS  
 VICE PRESIDENTS: KAREN OERTLEY, ADAM WHITE  
 DIRECTOR OF STRATEGIC DEVELOPMENT: KEN SCHLAGER  
 BUSINESS MANAGER: JOELLEN SOMMER

©1997 BPI Communications  
 1515 Broadway, New York, NY 10036 212-764-7300  
 For subscriptions call: 800-722-2346

Airplay Monitor reporting panels are based solely on a station's musical content.

# THE NIXONS

## Baton Rouge



### From Their Self-Titled New Album

#### LAST WEEK

#1 MOST ADDED AT ROCK RADIO  
 #2 MOST ADDED AT ALTERNATIVE RADIO

#### THIS WEEK

**(35)** DEBUT BDS ROCK MONITOR  
 ON OVER 160 STATIONS INCLUDING:

WRCX, KDGE, WRIF, KEGE, KEGL  
 KPNT, KTNQ, KCXX, WWBR, KLZR

### On Tour

May 30 San Antonio, TX  
 June 10 Lubbock, TX  
 June 11 Denton, TX  
 June 14 Fayetteville, NC  
 June 15 Charlotte, NC  
 June 17 Columbia, SC  
 June 18 Greenville, SC  
 June 19 Washington, DC  
 June 20 Middletown, NY

June 21 Dallas, TX (Blockbuster Rockfest 97)  
 June 22 Philadelphia, PA  
 June 24 New York, NY  
 June 26 Myrtle Beach, SC  
 June 28 Memphis, TN  
 June 29 Atlanta, GA  
 July 2 Panama City, FL  
 July 5 Jackson, MS  
 July 8 Oklahoma City, OK

July 9 Tulsa, OK  
 July 11 Dallas, TX  
 July 12 Corpus Christi, TX  
 July 13 Houston, TX  
 July 15 El Paso, TX  
 July 17 Las Vegas, NV  
 July 18 Phoenix, AZ  
 July 26 Sacramento, CA

Produced by Toby Wright and The Nixons • [Recorded and mixed by Toby Wright] • Management: Paul Nugent and Mike Swinton at RainMaker Artists  
 • Get AMPed: MCA Records • Online: www.mcarecords.com

MCA  
 ©1997 MCA Records

**AIRPLAY**  
**Monitor**  
**GREATEST GAINERS**



**Strongest Increase In Airplay This Week**

**MAINSTREAM ROCK**

**INCREASE  
IN PLAYS**

<b>THE SMASHING PUMPKINS • <i>The End Is The Beginning Is The End</i> (WARNER SUNSET/WARNER BROS.)</b>	<b>+370</b>
WAAF +25, KILO +21, WZAT +19, KUFO +19, WLZR +17, KRXQ +14, WIYY +14, KISW +14, WXTB +13, WXRA +12	
<b>THE NIXONS • <i>Baton Rouge</i> (MCA)</b>	<b>+300</b>
WXRA +30, KILO +18, WZAT +17, WAAF +17, KUFO +15, KRAD +12, WTUE +12, KISW +12, KEGL +12, WZTA +11	
<b>METALLICA • <i>Bleeding Me</i> (ELEKTRA/EEG)</b>	<b>+184</b>
KUFO +19, WBZX +14, WMMS +12, WIYY +12, KUPD +10, KZRR +9, KATT +9, WZTA +8, WEBN +8, WRIF +8	
<b>COLLECTIVE SOUL • <i>Listen</i> (ATLANTIC)</b>	<b>+145</b>
WJRR +15, WONE +15, KISS +15, WZTA +14, WCCC +14, WRIF +11, WNCD +10, WZAT +10, KFRQ +9, WEGR +9	
<b>FAITH NO MORE • <i>Last Cup Of Sorrow</i> (SLASH/REPRISE)</b>	<b>+108</b>
WZAT +11, KILO +11, KXXP +10, WMMS +8, KIOZ +7, WIYY +7, WYSP +6, KRAD +6, WROV +6, WAAF +6	
<b>MOTLEY CRUE • <i>Afraid</i> (MOTLEY/ELEKTRA/EEG)</b>	<b>+100</b>
WZAT +22, WNOR +13, KTXQ +8, WTAK +6, WZTA +6, WCCC +6, WAAF +6, KRAD +5, WJRR +5, WXTB +5	
<b>BLUES TRAVELER • <i>Carolina Blues</i> (A&amp;M)</b>	<b>+88</b>
WXRA +9, WBAB +8, WDHA +6, KQRS +6, WWDC +6, WARQ +5, WCCC +5, KDKB +5, WZTA +4, KEZO +4	
<b>MEGADETH • <i>Trust</i> (CAPITOL)</b>	<b>+81</b>
WAAF +14, WZAT +13, WBZX +8, WRXL +8, WYSP +7, KILO +6, WZMT +5, WTFX +5, KRZR +5, WCCC +5	
<b>THE WALLFLOWERS • <i>The Difference</i> (INTERSCOPE)</b>	<b>+71</b>
KTXQ +11, WDHA +10, WXTB +10, WAVF +9, WEGR +8, WEBN +8, KISS +8, WTAK +6, WVRK +6, WKQQ +6	
<b>SAMMY HAGAR • <i>Marching To Mars</i> (TRACK FACTORY/MCA)</b>	<b>+70</b>
KFRQ +14, WRXC +8, KDKB +8, KSHE +6, KOMP +5, KUFO +4, KZRR +4, WDHA +2, KSJO +2, KATT +2	

**MODERN ROCK**

**INCREASE  
IN PLAYS**

<b>THE SMASHING PUMPKINS • <i>The End Is The Beginning Is The End</i> (WARNER SUNSET/WARNER BROS.)</b>	<b>+903</b>
CIMX +43, WBZU +29, WRZX +29, KTOZ +27, WXEG +26, KNRK +26, WDGE +25, WXRK +25, WCYY +23, KITS +23	
<b>SUPERGRASS • <i>Cheapskate</i> (CAPITOL)</b>	<b>+220</b>
KJEE +20, WEND +20, WBZU +18, WRXQ +17, KNDD +16, KITS +13, WDGE +12, WPBZ +11, WBRU +11, WCYY +10	
<b>DAVE MATTHEWS BAND • <i>Tripping Billies</i> (RCA)</b>	<b>+147</b>
WEQX +15, XHRM +15, WWCD +12, WROX +11, KENZ +10, WRZX +10, KLYY +9, WCYY +8, WXEG +7, WNVE +7	
<b>BLUES TRAVELER • <i>Carolina Blues</i> (A&amp;M)</b>	<b>+146</b>
WGRD +18, WDGE +17, WBZU +13, WQBK +12, KTEG +9, WRLG +9, WPLY +9, KGDE +7, WNVE +7, KZON +6	
<b>THE WALLFLOWERS • <i>The Difference</i> (INTERSCOPE)</b>	<b>+146</b>
WRXQ +23, WNXR +16, WQBK +14, KNDD +14, WCYY +10, WRLG +10, WQXA +8, WXZZ +7, KXRK +7, KNRX +6	
<b>SUMMERCAMP • <i>Drawer</i> (MAVERICK/REPRISE)</b>	<b>+142</b>
WRXR +24, KITS +16, KXRK +11, KJEE +10, CIMX +10, WBRU +10, KPOI +9, KZON +9, XTRA +9	
<b>MICHAEL PENN • <i>Try</i> (57/EPIC)</b>	<b>+140</b>
KROX +15, WXEG +15, WENZ +14, WRLG +13, WBZU +11, KXRK +11, WEQX +11, WXPS +10, WPBZ +10, WWCD +10	
<b>DEL AMITRI • <i>Not Where It's At</i> (A&amp;M)</b>	<b>+130</b>
WXEG +17, KPOI +16, KAEP +13, CIMX +10, WEQX +10, WXDX +9, WNNX +9, WRLG +8, XHRM +8, WWCD +6	
<b>COLLECTIVE SOUL • <i>Listen</i> (ATLANTIC)</b>	<b>+120</b>
WRXQ +37, WQXA +19, WRZX +14, KXRK +14, WXZZ +13, KENZ +10, KNRX +10, WRLG +9, KWOD +9, KTOZ +6	
<b>K'S CHOICE • <i>Not An Addict</i> (550 MUSIC)</b>	<b>+120</b>
WROX +15, KGDE +15, KGDE +14, KEDJ +14, WKRL +13, KEGE +12, KKND +10, KNRX +9, WPLA +9, CIMX +9	
<b>LIVE • <i>Turn My Head</i> (RADIOACTIVE/MCA)</b>	<b>+120</b>
KAEP +17, KWOD +17, WPLY +13, KZON +13, WKQX +13, XTRA +13, KKND +8, KNDD +8, KEDJ +7, WBRU +6	
<b>SNEAKER PIMPS • <i>6 Underground</i> (CLEAN UP/VIRGIN)</b>	<b>+120</b>
KEGE +23, WPLY +20, WXEG +14, KLYY +12, KNDD +11, KAEP +10, KWOD +10, KROX +7, KTEG +7, KTOZ +6	

**VIDEO  
PLAYLISTS**

**MOST PLAYED ROCK TRACKS**



**TW LW**



<b>1 Paula Cole, <i>Where Have All The Cowboys Gone?</i></b>	<b>30</b>	<b>29</b>	<b>1 The Wallflowers, <i>The Difference</i></b>	<b>32</b>	<b>17</b>
<b>2 Savage Garden, <i>I Want You</i></b>	<b>29</b>	<b>33</b>	<b>2 The Chemical Brothers, <i>Block Rockin' Beats</i></b>	<b>24</b>	<b>29</b>
<b>3 The Wallflowers, <i>One Headlight</i></b>	<b>28</b>	<b>30</b>	<b>3 Foo Fighters, <i>Monkey Wrench</i></b>	<b>24</b>	<b>32</b>
<b>4 Shawn Colvin, <i>Sunny Came Home</i></b>	<b>25</b>	<b>23</b>	<b>4 U2, <i>Staring At The Sun</i></b>	<b>17</b>	<b>21</b>
<b>5 Meredith Brooks, <i>Bitch</i></b>	<b>22</b>	<b>23</b>	<b>5 Blur, <i>Song 2</i></b>	<b>16</b>	<b>19</b>
<b>6 U2, <i>Staring At The Sun</i></b>	<b>21</b>	<b>24</b>	<b>6 Live, <i>Freaks</i></b>	<b>16</b>	<b>22</b>
<b>7 Jewel, <i>You Were Meant For Me</i></b>	<b>20</b>	<b>26</b>	<b>7 The Verve Pipe, <i>The Freshmen</i></b>	<b>16</b>	<b>29</b>
<b>8 Barenaked Ladies, <i>The Old Apartment</i></b>	<b>16</b>	<b>15</b>	<b>8 Bush, <i>Cold Contagious</i></b>	<b>15</b>	<b>22</b>
<b>9 The Wallflowers, <i>The Difference</i></b>	<b>16</b>	<b>9</b>	<b>9 The Mighty Mighty Bosstones, <i>The Impression That I Get</i></b>	<b>14</b>	<b>16</b>
<b>10 Dave Matthews Band, <i>Crash Into Me</i></b>	<b>14</b>	<b>9</b>	<b>10 Jamiroquai, <i>Virtual Insanity</i></b>	<b>12</b>	<b>21</b>
<b>11 Duncan Sheik, <i>Barely Breathing</i></b>	<b>14</b>	<b>17</b>	<b>11 Meredith Brooks, <i>Bitch</i></b>	<b>12</b>	<b>16</b>
<b>12 Paul McCartney, <i>The World Tonight</i></b>	<b>13</b>	<b>1</b>	<b>12 White Town, <i>Your Woman</i></b>	<b>11</b>	<b>10</b>
<b>13 No Doubt, <i>Don't Speak</i></b>	<b>11</b>	<b>5</b>	<b>13 No Doubt, <i>Sunday Morning</i></b>	<b>11</b>	<b>13</b>
<b>14 The Cardigans, <i>Lovefool</i></b>	<b>11</b>	<b>9</b>	<b>14 Jon Bon Jovi, <i>Midnight In Chelsea</i></b>	<b>11</b>	<b>0</b>
<b>15 Sarah McLachlan, <i>Possession</i></b>	<b>10</b>	<b>5</b>	<b>15 Squirrel Nut Zippers, <i>Hell</i></b>	<b>10</b>	<b>24</b>
<b>16 Jon Bon Jovi, <i>Midnight In Chelsea</i></b>	<b>10</b>	<b>0</b>	<b>16 Jonny Lang, <i>Lie To Me</i></b>	<b>10</b>	<b>13</b>
<b>17 Jewel, <i>Who Will Save Your Soul</i></b>	<b>9</b>	<b>6</b>	<b>17 Savage Garden, <i>I Want You</i></b>	<b>9</b>	<b>20</b>
<b>18 The Verve Pipe, <i>The Freshmen</i></b>	<b>9</b>	<b>9</b>	<b>18 Counting Crows, <i>Daylight Fading</i></b>	<b>8</b>	<b>10</b>
<b>19 Counting Crows, <i>Daylight Fading</i></b>	<b>9</b>	<b>5</b>	<b>19 Ben Folds Five, <i>Battle Of Who Could Care Less</i></b>	<b>8</b>	<b>11</b>
<b>20 Eric Clapton, <i>Change The World</i></b>	<b>8</b>	<b>6</b>	<b>20 Third Eye Blind, <i>Semi-Charmed Life</i></b>	<b>8</b>	<b>13</b>
<b>21 Sheryl Crow, <i>Everyday Is A Winding Road</i></b>	<b>8</b>	<b>13</b>	<b>21 Tonic, <i>If You Could Only See</i></b>	<b>7</b>	<b>9</b>
<b>22 Jonny Lang, <i>Lie To Me</i></b>	<b>8</b>	<b>5</b>	<b>22 Fiona Apple, <i>Sleep To Dream</i></b>	<b>7</b>	<b>14</b>
<b>23 John Mellencamp, <i>Key West Intermezzo (I Saw You First)</i></b>	<b>7</b>	<b>8</b>	<b>23 Silverchair, <i>Freak</i></b>	<b>7</b>	<b>9</b>
<b>24 Counting Crows, <i>A Long December</i></b>	<b>7</b>	<b>7</b>	<b>24 The Offspring, <i>Gone Away</i></b>	<b>6</b>	<b>17</b>
<b>25 James Taylor, <i>Little More Time With You</i></b>	<b>7</b>	<b>0</b>	<b>25 Depeche Mode, <i>It's No Good</i></b>	<b>6</b>	<b>12</b>
<b>26 INXS, <i>Elegantly Wasted</i></b>	<b>6</b>	<b>14</b>	<b>26 Matchbox 20, <i>Push</i></b>	<b>5</b>	<b>5</b>
<b>27 Matchbox 20, <i>Push</i></b>	<b>5</b>	<b>2</b>	<b>27 Shawn Colvin, <i>Sunny Came Home</i></b>	<b>5</b>	<b>4</b>
<b>28 Toad The Wet Sprocket, <i>Come Down</i></b>	<b>5</b>	<b>3</b>	<b>28 K's Choice, <i>Not An Addict</i></b>	<b>5</b>	<b>5</b>
<b>29 Marc Cohn, <i>Walking In Memphis</i></b>	<b>4</b>	<b>0</b>	<b>29 The Cardigans, <i>Been It</i></b>	<b>5</b>	<b>9</b>
<b>30 Sheryl Crow, <i>If It Makes You Happy</i></b>	<b>4</b>	<b>9</b>	<b>30 311, <i>All Mixed Up</i></b>	<b>4</b>	<b>2</b>
			<b>31 Dave Matthews Band, <i>Tripping Billies</i></b>	<b>4</b>	<b>0</b>
			<b>32 The Smashing Pumpkins, <i>Disarm</i></b>	<b>3</b>	<b>0</b>
			<b>33 Dave Matthews Band, <i>Crash Into Me</i></b>	<b>3</b>	<b>2</b>
			<b>34 OMC, <i>How Bizarre</i></b>	<b>3</b>	<b>4</b>
			<b>35 Paula Cole, <i>Where Have All The Cowboys Gone?</i></b>	<b>3</b>	<b>9</b>
			<b>36 Sammy Hagar, <i>Little White Lie</i></b>	<b>3</b>	<b>0</b>
			<b>37 Green Day, <i>When I Come Around</i></b>	<b>3</b>	<b>1</b>
			<b>38 The Smashing Pumpkins, <i>Bullet With Butterfly</i></b>	<b>3</b>	<b>1</b>
			<b>39 Red Hot Chili Peppers, <i>Give It Away</i></b>	<b>2</b>	<b>2</b>
			<b>40 Nirvana, <i>Come As You Are</i></b>	<b>2</b>	<b>2</b>

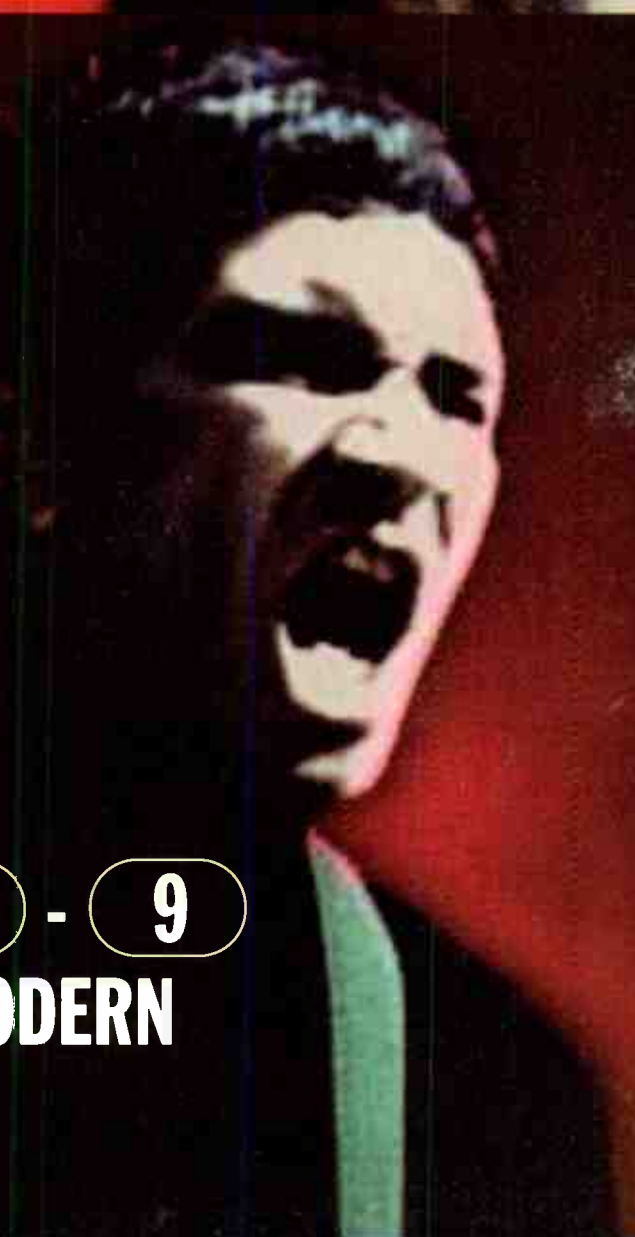
**TRIPLE-A**

**INCREASE  
IN PLAYS**

<b>DEL AMITRI • <i>Not Where It's At</i> (A&amp;M)</b>	<b>+69</b>
WRLT +16, WTTS +9, KKZN +8, KTCZ +6, KBCO +6, WXLE +5, KGSR +5, WJBX +4, WXRC +4, KMBY +3	
<b>DAVE MATTHEWS BAND • <i>Tripping Billies</i> (RCA)</b>	<b>+50</b>
WKOC +17, WBOS +8, WJBX +7, KFOG +6, WXLE +5, WXRT +5, KMBY +4, WHPT +4, KGSR +3, WXRC +2	
<b>STEVE WINWOOD • <i>Spy In The House Of Love</i> (VIRGIN)</b>	<b>+49</b>
WRLT +11, WTTS +11, KBCO +11, KKZN +9, KFOG +7, KGSR +5, KTCZ +4	
<b>VAN MORRISON • <i>Burning Ground</i> (POLYDOR/A&amp;M)</b>	<b>+48</b>
KFOG +16, CIDR +10, KKZN +6, KTCZ +6, WTTS +5, WXRV +5, WNCS +2, KBCO +2, KINK +1, KMTT +1	
<b>10,000 MANIACS • <i>More Than This</i> (GEFFEN)</b>	<b>+44</b>
WVRV +24, KKZN +7, KMBY +4, WBOS +4, KTCZ +3, WXLE +2, WXRV +2, KINK +1, KGSR +1	
<b>MATCHBOX 20 • <i>Push</i> (LAVA/ATLANTIC)</b>	<b>+35</b>
WBOS +21, WXLE +7, WTTS +4, KBCO +4, WXRT +4, WJBX +3, WHPT +2, CIDR +1, KPIG +1	
<b>JOHN FOGERTY • <i>Walking In A Hurricane</i> (WARNER BROS.)</b>	<b>+33</b>
WRLT +5, KFOG +5, KKZN +4, KMTT +4, WTTS +4, WXRV +4, WXRC +3, KMBY +2, KBCO +2, KXPT +1	
<b>HUFFAMOOSE • <i>Wait</i> (INTERSCOPE)</b>	<b>+33</b>
CIDR +9, KKZN +6, WMAX +6, WNCS +6, KMBY +3, KMTT +2, WJBX +1, WTTS +1, WXRV +1	
<b>SHERYL CROW • <i>A Change Would Do You Good</i> (A&amp;M)</b>	<b>+30</b>
WXLE +18, CIDR +11, WTTS +5, KBCO +5, WVRV +4, KFOG +4, KMTT +2, WHPT +2, WJBX +1, WXRV +1	
<b>WHITE TOWN • <i>Your Woman</i> (BRILLIANT!/CHRYSALIS/EMI)</b>	<b>+29</b>
WBOS +20, WXLE +7, WJBX +6, WVRV +1, WXRV +1	

**AIRPLAY**  
**Monitor**

**Rubs off on your business, not on your hands.**



# Stapleton

15 - 10  
MAINSTREAM

10 - 9  
MODERN

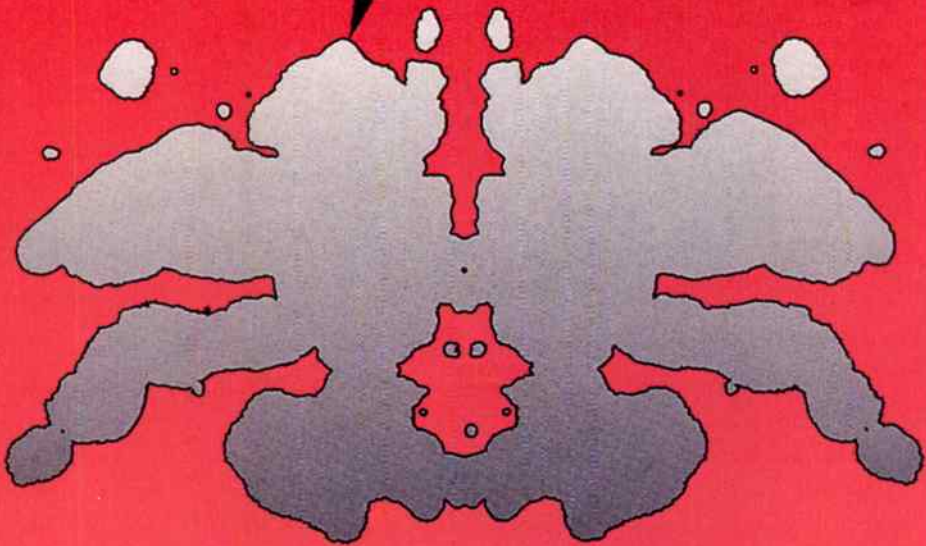
## "MONKEY WRENCH"

DEBUT 10 BILLBOARD 200



PRODUCED BY GIL NORTON • RECORDED BY BRADLEY COOK • MIXED BY CHRIS SHELTON AND GIL NORTON • MANAGED BY JOHN SILVA • [www.stapleton.com](http://www.stapleton.com)

# METALLICA



## BLEEDING ME

### ALBUM NETWORK

POWERCUTS 70 - 36

ALBUM NETWORK ACTIVE DEBUTS 34

R&R ACTIVE DEBUTS 33

R&R HERITAGE DEBUTS 46

FMQB HOT TRACK 62 - 42

ALREADY ON OVER 100 STATIONS INCLUDING:

KIOZ WAAF DC101 WNOR WZTA  
WXTB WJRR KEGL WRGX KISW  
KUFO KISS WMMS WAZU WRIF  
WEBN KXXP WLZR KUPD KRXQ

BIG SPINS ACROSS THE BOARD!

PRODUCED BY BOB ROCK WITH HETFIELD & ULRICH  
MANAGEMENT: Q PRIME INC.



# MAINSTREAM ROCK

## POWER PLAYLISTS



AIRPLAY  
**Monitor**

For Week Ending  
May 25, 1997

Playlists supplied by Broadcast Data Systems' Radio Track service. Songs ranked by number of plays in monitored week. Playlists are listed in order of TSA weekly curve, beginning with the highest-ranking station. Curves are updated twice weekly following the release of the Spring and Fall Arbitron surveys. The number of stations shown each week varies depending upon space.

KLOS		WYSP		WRCX	
Los Angeles PD: John Duncan MD: Rita Wilde		Philadelphia PD: Tim Sabeau APD/MD: Neal Mirsky		Chicago SM: Dave Richards APD/MD: Jo Robinson	
TW	LW	TW	LW	TW	LW
1	Matchbox 20, Push	1	Queensryche, Sign Of The Times	1	Sammy Hagar, Little White Lie
2	U2, Staring At The Sun	2	The Offspring, Gone Away	2	Alice In Chains, Down In A Hole
3	Paul McCartney, The World Tonight	3	Sammy Hagar, Little White Lie	3	Veruca Salt, Volcano Girls
4	Counting Crows, Daylight Fading	4	Soundgarden, Rhinoceros	4	The Offspring, Gone Away
5	John Fogarty, Walking In A Hurricane	5	Collective Soul, Precious Declaration	5	Local H, Fritz's Corner
6	INXS, Elegantly Wasted	6	Metallica, King Nothing	6	Aerosmith, Taste Of India
7	Lynyrd Skynyrd, Travelin' Man	7	Veruca Salt, Volcano Girls	7	Queensryche, Sign Of The Times
8	Corey Stevens, One More Time	8	Aerosmith, Pink	8	Soundgarden, Rhinoceros
9	Cheap Trick, Say Goodbye	9	Silverchair, Freak	9	Foo Fighters, Monkey Wrench
10	Sammy Hagar, Little White Lie	10	Tonic, If You Could Only See	10	Stabbing Westward, Shame
11	Aerosmith, Hole In My Soul	11	Outthousa, Welcome	11	Collective Soul, Precious Declaration
12	Toad The Wet Sprocket, Come Down	12	U2, Staring At The Sun	12	Metallica, King Nothing
13	The Wallflowers, The Difference	13	Live, Freaks	13	Live, Freaks
14	Jenny Holm, Lie To Me	14	Counting Crows, Daylight Fading	14	Tonic, If You Could Only See
15	Eric Johnson, S.R.V.	15	Seven Mary Three, RockCrown	15	Collective Soul, Listen
16	Boz Scaggs, It All Went Down The Drain	16	Motley Crue, Afraid	16	Metallica, Ain't My Bitch
17	ZZ Top, Cheap Sunglasses	17	Faith No More, Last Cup Of Sorrow	17	Our Lady Peace, Superman's Dead
18	Steve Winwood, Spy In The House Of Love	18	Foo Fighters, Monkey Wrench	18	Rush, Driven
19	Stoey Dan, Do It Again	19	Live, Lakin's Juice	19	The Smashing Pumpkins, Muzzle
20	Collective Soul, Listen	20	Aerosmith, Hole In My Soul	20	Local H, Bound For The Floor
21	Pearl Jam, Even Flow	21	Spunge, Powder	21	Bush, Groovy Fly
22	John Mellencamp, Just Another Day	22	Cool For August, Don't Wanna Be Here	22	Seven Mary Three, RockCrown
23	Eagles, Already Gone	23	Hakad, Mann's Chinese	23	Str, Stale
24	Jimi Hendrix, All Along The Watchtower	24	Disthwalla, Counting Blue Cars	24	Faith No More, Last Cup Of Sorrow
25	Santana, She's Not There	25	Megadeth, Trust	25	Seven Mary Three, Devil Boy
26	Mott The Hoople, All The Young Dudes	26	Cheap Trick, Hard To Tell	26	Alice In Chains, Would
27	Santana, Black Magic Woman	27	Drain S.T.H., I Don't Mind	27	Live, Lakin's Juice
28	Ten Years After, I'd Love To Change The	28	Foo Fighters, I'm Stuck Around	28	The Smashing Pumpkins, The End Is The Beginning
29	Pink Floyd, Comfortably Numb	29	Live, All Over You	29	Aerosmith, Falling In Love
30	Stevie Ray Vaughan & Double, Empty Arms	30	Tonic, Open Up Your Eyes	30	Tool, Stinkfish
KQRS		WMMR		WWDC	
Minneapolis PD: Dave Hamilton APD/MD: Reed Endersbe		Philadelphia PD: Joe Bonadonna MD: Ken Zepeto		Washington, DC VP/Programming: Dave Brown MD: Buddy Rizer	
TW	LW	TW	LW	TW	LW
1	Paul McCartney, The World Tonight	1	John Mellencamp, The Full Catastrophe	1	Chalk Farm, Live Tomorrow
2	Boz Scaggs, It All Went Down The Drain	2	U2, Staring At The Sun	2	Collective Soul, Listen
3	John Fogarty, Walking In A Hurricane	3	Jenny Holm, Lie To Me	3	Foo Fighters, Monkey Wrench
4	The Whyz, Steady As She Goes	4	Collective Soul, Precious Declaration	4	The Wallflowers, The Difference
5	Steve Winwood, Spy In The House Of Love	5	Better Than Ezra, Desperately Wanting	5	Tonic, If You Could Only See
6	Chalk Farm, Live Tomorrow	6	Counting Crows, Daylight Fading	6	Meredith Brooks, Bitch
7	Styx, On My Way	7	Lynyrd Skynyrd, Travelin' Man	7	Veruca Salt, Volcano Girls
8	Jenny Holm, Lie To Me	8	Aerosmith, Pink	8	Third Eye Blind, Semi-Charmed Life
9	Storyville, Good Day For The Blues	9	Sheryl Crow, A Change Would Do You Good	9	Silverchair, Freak
10	Widespread Panic, Tall Boy	10	Aerosmith, Hole In My Soul	10	U2, Staring At The Sun
11	Blues Traveler, One More Time	11	Stone Temple Pilots, Lady Picture Show	11	Matchbox 20, Push
12	Eric Johnson, S.R.V.	12	The Wallflowers, The Difference	12	The Offspring, Gone Away
13	Lynyrd Skynyrd, Travelin' Man	13	The Verve Pipe, The Freshmen	13	Mighty Mighty Bosstones, The Impression
14	The Wallflowers, The Difference	14	Wilco, Outtaste	14	Live, Rattlesnake
15	Corey Stevens, It's Over	15	Paul McCartney, The World Tonight	15	Sublime, Santeria
16	38 Special, Fade To Blue	16	Dave Matthews Band, Ants Marching	16	The Verve Pipe, The Freshmen
17	The Doobie Brothers, Black Water	17	Van Halen, Can't Stop Lovin' You	17	Social Distortion, When The Angels Sing
18	Blues Traveler, Carolina Blues	18	Collective Soul, Listen	18	Aerosmith, Falling In Love
19	Stoey Dan, FM	19	Tom Petty & The Heartbreakers, Climb That	19	Stone Temple Pilots, Tumble In The Rough
20	The Doors, Love Her Madly	20	Aerosmith, Falling In Love	20	INXS, Elegantly Wasted
21	Jimi Hendrix, All Along The Watchtower	21	Eric Johnson, S.R.V.	21	Cowboy Mouth, Jenny Says
22	The Fixx, One Thing Leads To Another	22	Disthwalla, Counting Blue Cars	22	Bush, Cold Contagious
23	Santana, Black Magic Woman	23	Spunge, Have You Seen Mary	23	Real Big Fish, Sell Out
24	The Black Crowes, Hard To Handle	24	John Mellencamp, Key West Intermezzo	24	Bush, Groovy Fly
25	Styx, On My Way	25	Stone Temple Pilots, Interstate Love Song	25	Bush, Song 2
26	The Wallflowers, One Headlight	26	Rolling Stones, Brown Sugar	26	Doisacha Made, It's No Good
27	Chris Whitley, Automatic	27	Dave Matthews Band, What Would You Say	27	Soundgarden, Blow Up The Outside World
28	Eagles, Already Gone	28	Tonic, Open Up Your Eyes	28	Cool For August, Don't Wanna Be Here
29	Jimi Hendrix, The Wind Cries Mary	29	Rolling Stones, Street Fighting Man	29	The Smashing Pumpkins, Eye
30	Fleetwood Mac, Dreams	30	Pearl Jam, Better Man	30	Toad The Wet Sprocket, Come Down
WRIF		WFBQ		KEGL	
Detroit PD: Doug Podell APD: Dave Wellington		Indianapolis OM: Marty Bender MD: Ace Cosby		Dallas MD: Cindy Scull	
TW	LW	TW	LW	TW	LW
1	Veruca Salt, Volcano Girls	1	John Mellencamp, Just Another Day	1	Matchbox 20, Push
2	The Offspring, Gone Away	2	Paul McCartney, The World Tonight	2	Sammy Hagar, Little White Lie
3	Live, Lakin's Juice	3	Aerosmith, Falling In Love	3	The Verve Pipe, The Freshmen
4	Sammy Hagar, Little White Lie	4	Sweet Wine, Mountaintop	4	The Offspring, Gone Away
5	Motley Crue, Afraid	5	Lynyrd Skynyrd, Travelin' Man	5	Tonic, If You Could Only See
6	Collective Soul, Precious Declaration	6	The Wallflowers, One Headlight	6	Metallica, Bleeding Me
7	Soundgarden, Rhinoceros	7	Boston, Higher Power	7	Motley Crue, Afraid
8	Tonic, If You Could Only See	8	Counting Crows, Daylight Fading	8	Aerosmith, Hole In My Soul
9	Queensryche, Sign Of The Times	9	Jon Bon Jovi, Queen Of New Orleans	9	Silverchair, Freak
10	Metallica, King Nothing	10	John Fogarty, Walking In A Hurricane	10	Rush, Virtuality
11	Stone Temple Pilots, Tumble In The Rough	11	Toad The Wet Sprocket, Come Down	11	Hakad, Mann's Chinese
12	Silverchair, Freak	12	Storyville, Blind Side	12	Bush, Cold Contagious
13	Foo Fighters, Monkey Wrench	13	John Mellencamp, The Full Catastrophe	13	Radish, Little Pink Stars
14	Live, Freaks	14	Styx, On My Way	14	Collective Soul, Listen
15	Metallica, Bleeding Me	15	Tonic, If You Could Only See	15	Live, Freaks
16	Megadeth, Trust	16	Aerosmith, Hole In My Soul	16	Queensryche, Sign Of The Times
17	Matchbox 20, Push	17	The Wallflowers, The Difference	17	The Misfits, Barton Rouge
18	Aerosmith, Pink	18	Sammy Hagar, Little White Lie	18	The Wallflowers, The Difference
19	Aerosmith, Hole In My Soul	19	38 Special, Fade To Blue	19	Soak, Me Compassionate
20	Bush, Cold Contagious	20	Matchbox 20, Push	20	Sugarfoot, Booty Street
21	Tool, H	21	Pink Floyd, Money	21	Cool For August, Don't Wanna Be Here
22	U2, Staring At The Sun	22	Gregg Allman, I'm No Angel	22	Foo Fighters, Monkey Wrench
23	The Smashing Pumpkins, The End Is The Beginning	23	Van Halen, Fresh What Ya Started	23	Drain S.T.H., I Don't Mind
24	Collective Soul, Listen	24	Van Halen, Jamie's Cryin'	24	Megadeth, Trust
25	Seven Mary Three, RockCrown	25	Aerosmith, Red	25	Ozzy Osbourne, Pory Mason
26	Cheap Trick, Say Goodbye	26	Eagles, Life In The Fast Lane	26	Seven Mary Three, RockCrown
27	Helmet, Exactly What You Wanted	27	Journey, Lights	27	U2, Staring At The Sun
28	Outthousa, Welcome	28	Derek & The Dominos, Layla	28	Pist-On, Grey Flag
29	Blur, Song 2	29	George Thorogood & The Destroyers, Who Do	29	The Cunnin'ghams, Bottle Rockets
30	Orbit, Medicine	30	Bob Seger, Night Moves	30	Social Distortion, I Was Wrong
WKLS		WAAF		WMMS	
Atlanta MD: Beth Kepple		Boston PD: Dave Douglas MD: John Osterlind		Cleveland PD: Bob Neumann APD: "Spaceman" Scott Hughes	
TW	LW	TW	LW	TW	LW
1	The Wallflowers, One Headlight	1	Mighty Mighty Bosstones, The Impression	1	Live, Freaks
2	Collective Soul, Precious Declaration	2	Foo Fighters, Monkey Wrench	2	Matchbox 20, Push
3	Stone Temple Pilots, Interstate Love Song	3	The Offspring, Gone Away	3	The Offspring, Gone Away
4	Stone Temple Pilots, Triffin' On A Hole	4	Veruca Salt, Volcano Girls	4	Hakad, Mann's Chinese
5	Alice In Chains, Man In The Box	5	Manbreak, Ready Or Not	5	Collective Soul, Listen
6	The Verve Pipe, The Freshmen	6	Faith No More, Last Cup Of Sorrow	6	Sammy Hagar, Little White Lie
7	Sammy Hagar, Little White Lie	7	The Smashing Pumpkins, The End Is The Beginning	7	Aerosmith, Hole In My Soul
8	Stone Temple Pilots, Push	8	Sammy Hagar, Little White Lie	8	Tool, H
9	The Offspring, Gone Away	9	Str, Stale	9	Megadeth, Trust
10	Aerosmith, Falling In Love	10	Tool, H	10	Stone Temple Pilots, Tumble In The Rough
11	Nirvana, Come As You Are	11	Gravity Kills, Down	11	Cowboy Mouth, Jenny Says
12	Soundgarden, Spoonman	12	Pariahood, Big Fine Thing	12	Jon Bon Jovi, Queen Of New Orleans
13	Metallica, When Else Matters	13	Live, Freaks	13	Cool For August, Don't Wanna Be Here
14	Red Hot Chili Peppers, Under The Bridge	14	Our Lady Peace, Superman's Dead	14	Foo Fighters, Monkey Wrench
15	Pearl Jam, Even Flow	15	Summercamp, Drower	15	Drain S.T.H., I Don't Mind
16	Pearl Jam, Alive	16	Motley Crue, Afraid	16	Faith No More, Last Cup Of Sorrow
17	Pearl Jam, Yellow Ledbetter	17	Korn, A.O.I.A.S.	17	Scream'n' Cheatah Wheelies, Magnolia
18	Alice In Chains, Down In A Hole	18	Bush, Cold Contagious	18	Motley Crue, Afraid
19	Guns N' Roses, Welcome To The Jungle	19	The Wobos, Baton Rouge	19	Our Lady Peace, Superman's Dead
20	Live, Lightning Crashes	20	Blur, Song 2	20	Seven Mary Three, RockCrown
21	Candlebox, Far Behind	21	Stone Temple Pilots, Tumble In The Rough	21	Veruca Salt, Volcano Girls
22	Pearl Jam, Alive	22	Live, Lakin's Juice	22	Metallica, Bleeding Me
23	Pearl Jam, Yellow Ledbetter	23	Outthousa, Welcome	23	The Wallflowers, The Difference
24	Candlebox, You	24	L7, Drama	24	Trooper, Raise A Little Hell
25	Beston, More Than A Feeling	25	Chalk Farm, Live Tomorrow	25	Nirvana, Smells Like Teen Spirit!
26	Pink Floyd, Young Lust	26	Megadeth, Trust	26	Ted Nugent, Cat Scratch Fever
27	Van Halen, Hot For Teacher	27	Nine Inch Nails, The Perfect Drug	27	Scorpions, Rock You Like A Hurricane
28	Soundgarden, Fall On Black Days	28	Bush, Groovy Fly	28	Kiss, Detroit Rock City
29	Pearl Jam, Better Man	29	Drain S.T.H., I Don't Mind	29	Dof Lppard, Pour Some Sugar On Me
30	Black Sabbath, Paranoid	30	Pee, Hello	30	Queensryche, Jet City Woman



# MAINSTREAM ROCK

## POWER PLAYLISTS™

**AIRPLAY Monitor**

For Week Ending  
May 25, 1997

Playlists supplied by Broadcast Data Systems' Radio Track service. Songs ranked by number of plays in monitored week. Playlists are listed in order of TSA weekly curve, beginning with the highest-ranking station. Curves are updated twice yearly following the release of the Spring and Fall Arbitron surveys. The number of stations shown each week varies depending upon space.

KTXQ		San Jose	
OM: Andy Lockridge MD: Redbeard		PD: Dana Jang MD: Laurie Free	
TW LW		TW LW	
1	Tonic, If You Could Only See	27	17
2	Sammy Hagar, Little White Lie	26	23
3	The Verve Pipe, The Freshmen	26	18
4	The Wallflowers, The Difference	24	14
5	Aerosmith, Hole In My Soul	24	13
6	Live, Freaks	15	16
7	Metallica, Am I Bitch	14	9
8	ZZ Top, Rhythm	14	15
9	Counting Crows, Daylight Fading	14	7
10	Motley Crue, AFraid	14	6
11	Metallica, King Nothing	13	6
12	The Offspring, Come Away	13	8
13	U2, Staring At The Sun	13	25
14	Jonny Lang, Lie To Me	13	8
15	311, A. M.O.D.	12	6
16	The Nixons, Baton Rouge	12	12
17	Toad The Wet Sprocket, Come Down	12	13
18	Foo Fighters, Monkey Wrench	12	9
19	John Fogerty, Walking In A Hurricane	11	3
20	Live, Lakin's Juice	10	12
21	Queensryche, Sign Of The Times	10	12
22	Garbage, #1 Crush	10	8
23	Bush, Groovy Fly	10	8
24	Bogobolin, Pretty In My Uniform	10	8
25	Bush, Swallow	9	8
26	Aerosmith, Falling In Love	9	8
27	Radish, Little Pink Stars	9	9
28	Cool For August, Don't Wanna Be Here	9	7
29	Sublime, What I Got	8	6
30	Nirvana, In Bloom	8	5

KSJO		San Jose	
PD: Dana Jang MD: Laurie Free		TW LW	
1	The Offspring, Come Away	22	27
2	Soundgarden, Rhinoceros	18	29
3	Silverchair, Freak	18	26
4	Tool, H. Alone	15	16
5	Veruca Salt, Volcano Girls	15	15
6	Queensryche, Sign Of The Times	11	26
7	Tonic, If You Could Only See	10	10
8	Drain S.T.H., I Don't Mind	10	12
9	Dishwalla, Country Blue Cars	9	11
10	Bush, Groovy Fly	9	11
11	The Wallflowers, The Difference	9	11
12	Sammy Hagar, Little White Lie	9	13
13	The Hangar, Vanishing Cream	8	12
14	Collective Soul, Listen	8	10
15	Stone Temple Pilots, Tumble In The Rough	8	8
16	Matchbox 20, Push	8	14
17	Aerosmith, Pink	8	11
18	Jonny Lang, Lie To Me	8	11
19	Alice In Chains, Never Now	7	10
20	Tonic, Open Up Your Eyes	7	9
21	Live, Freaks	7	14
22	Bush, Cold Contagious	7	5
23	Foo Fighters, Monkey Wrench	7	11
24	Metallica, King Nothing	6	8
25	Scorpions, No One Like You	6	3
26	Soundgarden, Born In My Hand	6	3
27	Metallica, Until It Sleeps	6	11
28	Live, Lakin's Juice	6	9
29	Tool, Stinkist	6	14
30	The Smashing Pumpkins, The End Is The Beginning	6	0

WEBN		Cincinnati	
DM: Jim Richards MD: Rick Jamie		TW LW	
1	The Offspring, Come Away	29	31
2	Stone Temple Pilots, Wicked Garden	29	26
3	Stone Temple Pilots, Tumble In The Rough	29	28
4	Soundgarden, Rhinoceros	26	20
5	Sammy Hagar, Little White Lie	20	19
6	The Wallflowers, The Difference	18	10
7	Alice In Chains, What The Hell Have I	17	16
8	Stabbing Westward, Shame	17	15
9	Metallica, Bleeding Me	17	9
10	Live, Lakin's Juice	15	26
11	Pearl Jam, Start To Love And Trust	14	18
12	Collective Soul, Listen	13	17
13	Nighty Joe Plum, Live Through This	12	16
14	Seven Mary Three, My Way	11	11
15	Candlebox, Far Beyond	11	10
16	Seven Mary Three, Dent Boy	10	6
17	The Nixons, Baton Rouge	10	0
18	Pearl Jam, Start To Love And Trust	10	22
19	Alice In Chains, Never Now	7	10
20	Alice In Chains, Man In The Box	9	5
21	Aerosmith, Hole In My Soul	9	12
22	Collective Soul, Precious Declaration	9	13
23	Corrosion Of Conformity, Drowning In A	9	14
24	Tonic, If You Could Only See	9	7
25	The Smashing Pumpkins, The End Is The Beginning	8	0
26	Metallica, Sad But True	7	7
27	Live, White, Dis Union	7	4
28	Nirvana, Come As You Are	7	3
29	Alice In Chains, Down In A Hole	7	7
30	Naked, Mann's Chinese	7	10

WHJY		Providence	
PD: Bill Weston MB: Sharon Schifano		TW LW	
1	The Offspring, Come Away	21	25
2	Collective Soul, Precious Declaration	20	14
3	Live, Lakin's Juice	19	25
4	The Verve Pipe, The Freshmen	17	23
5	Bereaved Ladies, The Old Acquaintance	16	13
6	Sammy Hagar, Little White Lie	11	18
7	Tonic, If You Could Only See	11	13
8	Metallica, King Nothing	10	20
9	Sheryl Crow, Change Would Be You Good	10	12
10	Stone Temple Pilots, Triffin' On A Hole	9	15
11	Better Than Ezra, Desperately Wanting	9	10
12	Tonic, Open Up Your Eyes	9	9
13	Counting Crows, Angels Of The Silences	9	14
14	Dave Matthews Band, So Much To Say	9	15
15	Aerosmith, Hole In My Soul	4	14
16	Matchbox 20, Push	4	14
17	Metallica, Hero Of The Day	8	13
18	Aerosmith, Falling In Love	8	14
19	Everclear, Santa Monica	8	8
20	John Mellencamp, Just Another Day	8	7
21	The Wallflowers, The Difference	8	12
22	Jonny Lang, Lie To Me	8	13
23	Bush, Counting Blue Cars	7	12
24	U2, Staring At The Sun	7	12
25	The Wallflowers, 6th Avenue Heartache	7	7
26	Metallica, Until It Sleeps	7	10
27	Blair, Song 2	7	7
28	Alice In Chains, Would	6	6
29	Third Eye Blind, Semi-Charmed Life	6	12
30	The Wallflowers, One Headlight	6	16

WZTA		Miami	
VP Prog.: Gregg Steele PD: Duane Doherty		TW LW	
1	The Offspring, Come Away	37	36
2	Tonic, If You Could Only See	37	38
3	Sammy Hagar, Little White Lie	36	21
4	Matchbox 20, Push	30	35
5	Soundgarden, Rhinoceros	28	36
6	Faith No More, Last Cup Of Sorrow	28	23
7	The Verve Pipe, The Freshmen	27	36
8	Cool For August, Don't Wanna Be Here	26	33
9	Live, Lakin's Juice	22	3
10	The Smashing Pumpkins, The End Is The Beginning	21	13
11	Live, Freaks	21	22
12	Foo Fighters, Monkey Wrench	19	18
13	Metallica, Bleeding Me	19	11
14	The Wallflowers, The Difference	18	13
15	Collective Soul, Listen	17	3
16	Jonny Lang, Lie To Me	16	17
17	Seven Mary Three, Rock Crown	15	19
18	Toad The Wet Sprocket, Come Down	14	8
19	Veruca Salt, Volcano Girls	12	11
20	Mighty Joe Plum, Live Through This	12	16
21	Bush, Groovy Fly	12	9
22	Motley Crue, AFraid	12	10
23	Outbase, Welcome	12	10
24	Sugarcoat, Body Street	12	14
25	Metallica, King Nothing	11	7
26	Stone Temple Pilots, Interstate Love Song	11	7
27	The Nixons, Baton Rouge	11	0
28	Cowboy Mouth, Jenny Says	11	13
29	Our Lady Peace, Superman's Dead	11	13
30	Blair, Song 2	11	12

WIYY		Baltimore	
PD: Rick Strauss APD/MD: Rob Heckman		TW LW	
1	The Smashing Pumpkins, The End Is The Beginning	22	8
2	Veruca Salt, Volcano Girls	22	16
3	The Offspring, Come Away	21	20
4	Tonic, Casual Affair	21	19
5	Aerosmith, Falling In Love	20	15
6	Motley Crue, AFraid	20	19
7	Queensryche, Sign Of The Times	19	21
8	Sammy Hagar, Little White Lie	19	12
9	Live, Lakin's Juice	19	20
10	Seven Mary Three, Rock Crown	17	14
11	Cool For August, Don't Wanna Be Here	15	15
12	Soundgarden, Rhinoceros	15	15
13	Naked, Mann's Chinese	15	14
14	Foo Fighters, Monkey Wrench	14	18
15	Jimmi's Gibblew Shack, Dropping Anchor	14	19
16	Live, Freaks	14	11
17	Metallica, Bleeding Me	12	0
18	Megadeth, Trust	12	12
19	Aerosmith, Hole In My Soul	11	13
20	Faith No More, Last Cup Of Sorrow	10	3
21	Live, Lakin's Juice	9	20
22	Blair, Song 2	9	2
23	Bush, Groovy Fly	9	7
24	Social Distortion, I Was Wrong	9	5
25	Drain S.T.H., I Don't Mind	8	6
26	Metallica, Hero Of The Day	8	9
27	Silverchair, Freak	8	7
28	The Wallflowers, One Headlight	7	4
29	The Wallflowers, The Difference	7	5
30	Local H, Bound For The Floor	7	8

KSHE		St. Louis	
PD: Rick Balis MD: Al Hofer		TW LW	
1	Tonic, If You Could Only See	20	23
2	U2, Staring At The Sun	19	18
3	Aerosmith, Falling In Love	16	23
4	Sammy Hagar, Little White Lie	13	26
5	Abrams Pool, Going Home	10	11
6	Boston, Higher Power	10	2
7	ZZ Top, Rhythm	10	12
8	The Wallflowers, The Difference	10	11
9	Queensryche, Sign Of The Times	10	22
10	Coray Stevens, One More Time	9	13
11	Screamin' Cheech & Chong, Magnolia	8	9
12	Jonny Lang, Lie To Me	8	12
13	38 Special, Fade To Blue	8	2
14	Counting Crows, Daylight Fading	8	10
15	John Fogerty, Walking In A Hurricane	7	3
16	Matchbox 20, Push	7	5
17	Lynyrd Skynyrd, Call Me The Breeze	6	3
18	Sammy Hagar, Marching To Mars	6	0
19	Metallica, King Nothing	6	5
20	Shooting Star, Last Chance	6	4
21	Pete Townshend, Rough Boys	6	4
22	Peter Dinklage, Salisbury Hill	5	4
23	Fred, All Right Now	5	4
24	Thin Lizzy, The Boys Are Back In Town	5	4
25	The Black Crowes, Blackberry	5	5
26	Rolling Stones, Gimme Shelter	5	2
27	Stone Temple Pilots, Interstate Love Song	5	3
28	Jefferson Starship, Jane	5	2
29	Boston, Peace Of Mind	5	3
30	Guns N' Roses, Sweet Child O' Mine	5	3

WLZR		Milwaukee	
PD: Keith Hastings		TW LW	
1	Bush, Groovy Fly	39	30
2	The Offspring, Come Away	39	43
3	Metallica, King Nothing	31	34
4	Veruca Salt, Volcano Girls	30	38
5	Tool, Stinkist	24	26
6	Sammy Hagar, Little White Lie	24	26
7	Foo Fighters, Monkey Wrench	23	27
8	Collective Soul, Listen	22	26
9	Tonic, If You Could Only See	21	16
10	Soundgarden, Rhinoceros	21	21
11	Aerosmith, Pink	21	23
12	Silverchair, Freak	20	23
13	Motley Crue, AFraid	20	30
14	Live, Freaks	19	23
15	The Smashing Pumpkins, The End Is The Beginning	17	0
16	Stone Temple Pilots, Interstate Love Song	15	8
17	Nirvana, Smells Like Teen Spirit	13	7
18	The Nixons, Baton Rouge	13	10
19	Soundgarden, Spermman	12	10
20	Alice In Chains, Man In The Box	12	13
21	Metallica, Bleeding Me	11	8
22	Stone Temple Pilots, Vasoline	11	7
23	Live, I Alone	11	8
24	Megadeth, Trust	11	14
25	Blair, Song 2	11	12
26	Matchbox 20, Push	11	9
27	Soundgarden, Back Hole Sun	10	9
28	Bush, Comedown	10	12
29	Pearl Jam, Even Flow	10	5
30	Pearl Jam, Jeremy	10	8

WJRR		Orlando	
PD: Dick Sheetz MD: Pat Lynch		TW LW	
1	Third Eye Blind, Semi-Charmed Life	35	32
2	Queensryche, Sign Of The Times	34	36
3	The Offspring, Come Away	33	38
4	Tonic, If You Could Only See	31	33
5	Naked, Mann's Chinese	24	22
6	Live, Freaks	22	19
7	Sugarcoat, Body Street	21	22
8	Orbit, Medicine	20	18
9	Radish, Little Pink Stars	19	23
10	Cool For August, Don't Wanna Be Here	19	19
11	The Wallflowers, The Difference	19	18
12	Sammy Hagar, Little White Lie	19	17
13	Bush, Cold Contagious	19	20
14	Vibronese, Bridge Over Me	17	18
15	Orbit, Medicine	16	18
16	Veruca Salt, Volcano Girls	16	14
17	Aerosmith, Hole In My Soul	16	0
18	Seven Mary Three, Rock Crown	16	15
19	Mighty Joe Plum, Live Through This	15	17
20	Silverchair, Abuse Me	15	15
21	Collective Soul, Lester	15	0
22	Foo Fighters, Monkey Wrench	15	14
23	Local H, Bound For The Floor	14	11
24	Social Distortion, When The Angels Sing	13	8
25	Nicklebag, All In My Mind	13	14
26	Megadeth, Trust	13	13
27	Motley Crue, AFraid	13	8
28	Sublime, What I Got	12	11
29	Metallica, King Nothing	12	11
30	Failure, Stuck On You	12	9

WONE		Akron	
PD: J.D. APD: Tim Daugherty		TW LW	
1	Aerosmith, Hole In My Soul	23	30
2	U2, Staring At The Sun	23	28
3	Collective Soul, Precious Declaration	21	29
4	ZZ Top, Rhythm	19	24
5	Sammy Hagar, Little White Lie	19	24
6	John Mellencamp, The Full Catastrophe	18	24
7	Lynyrd Skynyrd, Travelin' Man	18	24
8	The Verve Pipe, The Freshmen	16	29
9	Collective Soul, Listen	15	0
10	Jonny Lang, Lie To Me	15	21
11	The Wallflowers, The Difference	15	20
12	Tonic, If You Could Only See	14	22
13	Counting Crows, Daylight Fading	14	20
14	Queensryche, Sign Of The Times	13	16
15	Matchbox 20, Push	9	11
16	Bush, Cold Contagious	8	9
17	Live, Freaks	8	9
18	The Offspring, Come Away	8	0
19	ZZ Top, Gimme All Your Lovin'	7	2
20	ZZ Top, Bang Bang	7	2
21	Blair, Song 2	6	7
22	AC/DC, Dirty Deeds Done Dirt Cheap	6	1
23	Tom Petty, You Wreck Me	6	6
24	Aerosmith, Rag Doll	6	3
25	ZZ Top, Cheap Sunglasses	6	3
26			

POWER PLAYLISTS

For Week Ending May 25, 1997



Playlists supplied by Broadcast Data Systems. Radio track service. Songs ranked by number of plays in monitored week. Playlists are listed in order of TSA weekly curve, beginning with the highest-cumulative station. Cumulative are updated twice weekly following the release of the Spring and Fall Arbitron surveys. The number of stations shown each week varies depending upon space.

Grid of 48 radio station playlists (e.g., WBZX, KQRC, KISW, KISS, WBAB, KUFO, WIMZ, WRDU, KBPI, KRXQ, KDKB, WROQ, WCMF, WDHA, KYYS, WCKW, WPYX, WZZO, KATT, WLVQ, WEGR, KIOZ, WTFX, WTUE) with columns for station name, PD, MD, and song lists with TW and LW values.



★ ★ ★ **AIRPOWER** ★ ★ ★  
(Minimum 800 detections for the first time)

NO RECORDS QUALIFIED FOR AIRPOWER THIS WEEK

**AIRPOWER BOUND**

Total Plays/Gain

**MOTLEY CRUE 779/100**

*Afraid (Motley/Elektra/EEG)*  
Total Stations: 69/Chart Move: 21-15  
Heavy (21+ plays): 9 KATT, KAZR, KEGL, KILO, WAAF, WNOR, WRIF, WXTB, WZAT  
Medium (14-20): 16 KCAL, KEZO, KIOZ, KOMP, KRAD, KRZR, KTXQ, KXXP, WDHA, WIOT, WIYY, WLZR, WMMS, WRXL, WTPA, WZMT  
Light (Under 14): 44  
New Airplay This Week: 7 KBER, KLAQ, KMOD, WAPL, WLVO, WNCD, WTAK

**COLLECTIVE SOUL 754/145**

*Listen (Atlantic)*  
Total Stations: 67/Chart Move: 27-17  
Heavy (21+ plays): 9 KISS, KTUX, KZRR, WARQ, WLZR, WMMS, WRDU, WWDC, WZAT  
Medium (14-20): 12 KEGL, KLB, KOMP, KRXQ, KRZR, KUFO, WCCC, WIOT, WJRR, WONE, WTPA, WZTA  
Light (Under 14): 46  
New Airplay This Week: 12 KFRQ, WBZX, WCCC, WEGR, WJRR, WMMR, WNCD, WONE, WRIF, WTFX, WVRK, WZTA

**COOL FOR AUGUST 666/9**

*Don't Wanna Be Here (Warner Bros.)*  
Total Stations: 67/Chart Move: 22-21  
Heavy (21+ plays): 6 KISS, KTUX, WAVF, WMMS, WZAT, WZTA  
Medium (14-20): 12 KEZO, KLB, KNCN, KRAD, KRXQ, KRZR, KUFO, WIYY, WJRR, WKLO, WWDC, WXTB  
Light (Under 14): 49

**MEGADETH 649/81**

*Trust (Capitol)*  
Total Stations: 56/Chart Move: 28-23  
Heavy (21+ plays): 6 KILO, KUPD, KXXP, WBZX, WMMS, WNOR  
Medium (14-20): 11 KATT, KAZR, KBER, KIOZ, KQRC, KRAD, KRZR, WAAF, WCCC, WRIF, WXRA  
Light (Under 14): 39  
New Airplay This Week: 8 WAAF, WRXL, WSTZ, WTFX, WYSP, WZAT, WZMT, WZTA

**THE SMASHING PUMPKINS 520/370**

*The End Is The Beginning Is The End (Warner Sunset/Warner Bros.)*  
Total Stations: 50/Chart Move: Debut 29  
Heavy (21+ plays): 7 KILO, KRXQ, WAAF, WIYY, WXRA, WXTB, WZTA  
Medium (14-20): 6 KIOZ, KISW, KUFO, WARQ, WLZR, WZAT  
Light (Under 14): 37  
New Airplay This Week: 24 KATT, KBPI, KISS, KISW, KLB, KNCN, KQRC, KRAB, KRZR, KSJO, KTUX, KUFO, KUPD, KXXP, WDHA, WEBN, WJRR, WKQ, WLZR, WRIF, WSTZ, WTPA, WYSP, WZAT

**TOAD THE WET SPROCKET 520/54**

*Come Down (Columbia)*  
Total Stations: 49/Chart Move: 35-30  
Heavy (21+ plays): 5 WARQ, WAVF, WIXV, WXRA, WZAT  
Medium (14-20): 8 KEZO, KLPX, KTUX, KTYD, WLVO, WROV, WTUE, WZTA  
Light (Under 14): 36  
New Airplay This Week: 2 KEGL, WKLC

**THE NIXONS 463/300**

*Baton Rouge (MCA)*  
Total Stations: 46/Chart Move: Debut 35  
Heavy (21+ plays): 5 KRXQ, WAAF, WARQ, WXRA, WZAT  
Medium (14-20): 3 KEGL, KILO, KUFO  
Light (Under 14): 38  
New Airplay This Week: 24 KAZR, KBER, KEGL, KILO, KISW, KOMP, KQRC, KRAD, KTUX, KUFO, KUPD, KZRR, WAAF, WEBN, WIXV, WIYY, WJRR, WRCX, WSTZ, WTFX, WTUE, WXTB, WZMT, WZTA

**BLUR 453/17**

*Song 2 (Food/Parlophone/Virgin)*  
Total Stations: 51/Chart Move: 38-37  
Heavy (21+ plays): 5 KBPI, KRAD, KTUX, WKLO, WXRA  
Medium (14-20): 6 KAZR, KILO, WAAF, WARQ, WWDC, WZAT  
Light (Under 14): 40  
New Airplay This Week: 3 KEGL, KYYS, WNOR

**THIRD EYE BLIND 405/-6**

*Semi-Charmed Life (Elektra/EEG)*  
Total Stations: 30/Chart Move: 39-40  
Heavy (21+ plays): 9 KBPI, KRAB, KTUX, WARQ, WAVF, WJRR, WKLO, WXRA, WZAT  
Medium (14-20): 1 WWDC  
Light (Under 14): 20  
New Airplay This Week: 1 WBAB

**CHART BOUND**

Total Plays/Gain

**FAITH NO MORE 404/108**

*Last Cup Of Sorrow (Slash/Reprise)*  
Total Stations: 47  
Heavy (21+ plays): 4 KILO, KXXP, WAAF, WZTA  
Medium (14-20): 3 KRXQ, WMMS, WZAT  
Light (Under 14): 40  
New Airplay This Week: 10 KIOZ, KISS, KLB, KRAD, KZRR, WCCC, WIYY, WROV, WXTB, WZAT

**METALLICA 356/184**

*Bleeding Me (Elektra/EEG)*  
Total Stations: 34  
Heavy (21+ plays): 3 KAZR, KEGL, KQRC  
Medium (14-20): 7 KRZR, KUFO, KXXP, WBZX, WEBN, WRIF, WZTA

**MOST NEW AIRPLAY THIS WEEK**

No. Of Stations

<b>THE NIXONS</b> <i>Baton Rouge (MCA)</i>	24
<b>THE SMASHING PUMPKINS</b> <i>The End Is The Beginning Is The End (Warner Sunset/Warner Bros.)</i>	24
<b>COLLECTIVE SOUL</b> <i>Listen (Atlantic)</i>	12
<b>METALLICA</b> <i>Bleeding Me (Elektra/EEG)</i>	12
<b>FAITH NO MORE</b> <i>Last Cup Of Sorrow (Slash/Reprise)</i>	10
<b>THE WALLFLOWERS</b> <i>The Difference (Interscope)</i>	10

Light (Under 14): 24  
New Airplay This Week: 12 KATT, KRXQ, KUFO, KUPD, KZRR, WBZX, WIOT, WIYY, WJRR, WMMS, WRCX, WWDC

**SUGARTOOTH 347/56**

*Booty Street (DGC/Geffen)*  
Total Stations: 36  
Heavy (21+ plays): 1 WJRR  
Medium (14-20): 8 KBER, KILO, KISW, KRZR, KTUX, KXXP, WXRA, WZAT  
Light (Under 14): 27  
New Airplay This Week: 5 KLAQ, KRAD, KZRR, WMMS, WROV

**COREY STEVENS 342/-32**

*One More Time (Eureka/Discovery)*  
Total Stations: 35  
Heavy (21+ plays): 1 KDKB  
Medium (14-20): 5 KLPX, WCKW, WLVO, WRXK, WZZO  
Light (Under 14): 29  
New Airplay This Week: 1 WIXV

**JOHN FOGERTY 329/7**

*Walking In A Hurricane (Warner Bros.)*  
Total Stations: 36  
Heavy (21+ plays): 0  
Medium (14-20): 4 KEZO, KQRS, WIMZ, WIZN  
Light (Under 14): 32  
New Airplay This Week: 8 KSHE, KTXQ, WCMF, WFBQ, WKLC, WSTZ, WTAK, WZAT

**OUR LADY PEACE 309/65**

*Superman's Dead (Columbia)*  
Total Stations: 41  
Heavy (21+ plays): 2 KTUX, WAAF  
Medium (14-20): 4 KRXQ, WKLO, WMMS, WXTB  
Light (Under 14): 35  
New Airplay This Week: 5 KUPD, WCCC, WKQ, WTFX, WTUE

**RADISH 302/-14**

*Little Pink Stars (Mercury)*  
Total Stations: 40  
Heavy (21+ plays): 0  
Medium (14-20): 6 KEGL, KTUX, WARQ, WJRR, WXRA, WZAT  
Light (Under 14): 34  
New Airplay This Week: 1 KZRR

**THE CUNNINGHAMS 227/44**

*Bottle Rockets (Revolution)*  
Total Stations: 33  
Heavy (21+ plays): 0  
Medium (14-20): 3 KBPI, WCCC, WXRA

Light (Under 14): 30  
New Airplay This Week: 3 KAZR, KQRC, WKLO

**BOSTON 226/19**

*Higher Power (Epic)*  
Total Stations: 29  
Heavy (21+ plays): 0  
Medium (14-20): 3 KRZZ, WIZN, WTAK  
Light (Under 14): 26  
New Airplay This Week: 6 KFRQ, KSHE, KTAL, KZRR, WPLR, WSTZ

**MEREDITH BROOKS 224/18**

*Bitch (Capitol)*  
Total Stations: 19  
Heavy (21+ plays): 5 KRAB, KTUX, WARQ, WAVF, WXRA  
Medium (14-20): 2 KDKB, WWDC  
Light (Under 14): 12  
New Airplay This Week: 1 WBAB

**SUMMERCAMP 196/11**

*Drawer (Maverick/Reprise)*  
Total Stations: 30  
Heavy (21+ plays): 1 WAAF  
Medium (14-20): 5 KLB, KTUX, KTYD, WKLO, WZAT  
Light (Under 14): 24  
New Airplay This Week: 3 KQRC, KRAD, KUPD

**THE MIGHTY MIGHTY BOSSTONES 194/6**

*The Impression That I Get (Big Rig/Mercury)*  
Total Stations: 19  
Heavy (21+ plays): 3 KBPI, WAAF, WXRA  
Medium (14-20): 2 WKLO, WWDC  
Light (Under 14): 14  
New Airplay This Week: 1 KTUX

**AMPAGE 147/-4**

*Words (Higher Source)*  
Total Stations: 23  
Heavy (21+ plays): 0  
Medium (14-20): 1 WZAT  
Light (Under 14): 22

**VIBROLUSH 147/7**

*Bridge Over Me (Iguana/Interscope)*  
Total Stations: 19  
Heavy (21+ plays): 0  
Medium (14-20): 4 KRAD, KRZR, KTUX, WJRR  
Light (Under 14): 15  
New Airplay This Week: 3 KYYS, WKLO, WROV

★ **MANBREAK 135/65**

*Ready Or Not (Almo Sounds/Geffen)*  
Total Stations: 18  
Heavy (21+ plays): 1 WAAF  
Medium (14-20): 1 KRXQ  
Light (Under 14): 16  
New Airplay This Week: 4 KRXQ, KTUX, WROV, WSTZ

**STYX 128/16**

*On My Way (CMC International)*  
Total Stations: 16  
Heavy (21+ plays): 0  
Medium (14-20): 0  
Light (Under 14): 16  
New Airplay This Week: 2 WEGR, WRXK

**SHERYL CROW 124/39**

*A Change Would Do You Good (A&M)*  
Total Stations: 10  
Heavy (21+ plays): 1 WARQ  
Medium (14-20): 3 KDKB, WMMR, WXRA  
Light (Under 14): 8  
New Airplay This Week: 2 KBPI, WBAB

★ **PISTON 98/23**

*Grey Flap (Fierce/Lava/Antarctic)*  
Total Stations: 15  
Heavy (21+ plays): 0  
Medium (14-20): 1 KILO  
Light (Under 14): 14  
New Airplay This Week: 2 KRZR, WAAF

★ **JON BON JOVI 96/40**

*Queen Of New Orleans (Mercury)*  
Total Stations: 12  
Heavy (21+ plays): 1 WMMS  
Medium (14-20): 1 KDKB  
Light (Under 14): 10  
New Airplay This Week: 5 WFBQ, WIXV, WPLR, WROQ, WRXL

★ **BLUES TRAVELER 88/88**

*Carolina Blues (A&M)*  
Total Stations: 31  
Heavy (21+ plays): 0  
Medium (14-20): 0  
Light (Under 14): 31  
New Airplay This Week: 5 KQRS, WBAB, WDHA, WWDC, WXRA

**SOAK 81/6**

*Me Compassionate (RainMaker/Interscope)*  
Total Stations: 12  
Heavy (21+ plays): 0  
Medium (14-20): 1 KEGL  
Light (Under 14): 11

★ **STEVE WINWOOD 76/15**

*Spy In The House Of Love (Virgin)*  
Total Stations: 17  
Heavy (21+ plays): 0  
Medium (14-20): 2 KQRS, WBAB  
Light (Under 14): 15  
New Airplay This Week: 1 WEGR

Airpower awarded to those records which attain 800 detections for the first time. New airplay lists those stations registering six or more detections per week on a record for the first time. ★ Initial impact: records appearing on this page for the first time.



SONG ACTIVITY REPORTS

For Week Ending May 25, 1997



Detailed song tracking information for the last 3 weeks for all songs showing increased play this week. Total plays and gain do not include video play. Markets listed in order of population.

Table with 4 columns: Artist, Song, Total Plays/Gain, and Chart Move. Rows include Aerosmith (Hole In My Soul), Blur (Song 2), Boston (Higher Power), Meredith Brooks (Bitch), and Collective Soul (Listen).

Table with 4 columns: Artist, Song, Total Plays/Gain, and Chart Move. Rows include Cool For August (Don't Wanna Be Here), The Cunninghams (Bottle Rockets), Faith No More (Last Cup Of Sorrow), John Fogerty (Walking In A Hurricane), and Foo Fighters (Monkey Wrench).



SONG ACTIVITY REPORTS

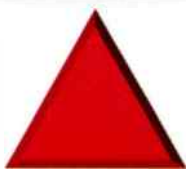
Broadcast Data Systems
Detailed song tracking information for the last 3 weeks for all songs showing increased play this week. Total plays and gain do not include video play. Markets listed in order of population.

For Week Ending May 25, 1997

Table with 5 columns: Artist, Total Plays/Gain, Chart Move, and 10 market columns (L.A., Chicago, Phila., Detroit, Dallas, Wash., DC, Boston, Miami, Atlanta, Seattle, Long Isl., San Diego, Minn., St. Louis, Balt., Phoenix, Tampa, Clevel., Denver, Port., OR, Cincinn., Kan.City, Rivers, Milwauk., Sacram., San Jose, Provid., Colum., OH, Norfolk, San Anton., Salt Lake, Indian., New Or., Orlando, Hartford, Greensb., Memphis, Rochest., W.P.Beach, Las Vegas, Louisv., Ra./Dur., Okla.City, Dayton). Each market column shows station call letters, song title, and play/gain data.

# THE NEW GL

Mercedes-



**TOP 40 / RHYTHM-CROSSOVER**

*Begins June 9th*



**TOP 40 / MAINSTREAM**

*Begins July 21st*



**AD**

*Begins A*

*“It all starts r*

*For more information, call*

---

A C T I V E I N D U S

# GRAND PRIZE

-Benz SLK



**MULT**

*Begins August 21st*

**AIR ROCKS**

*Begins August 28th*

**MODERN ROCK**

*Begins October 27th*

*with listening.”*

(410)381-6800 or (310)453-8500

T R Y R E S E A R C H

POWER PLAYLISTS

For Week Ending May 25, 1997



Playlists supplied by Broadcast Data Systems' Radio Track service. Songs ranked by number of plays in monitored week. Playlists are listed in order of TSS weekly count, beginning with the highest-scoring station. Counts are updated twice weekly following the release of the Spring and Fall Arbitron surveys. The number of stations shown each week varies depending upon space.

Grid of 48 radio station playlists (e.g., WXRK, KROQ, WKQX, WBCN, KLYY, WPLY, WHFS, WNNX, KITS, KDGE, WHYT, KEGE, KTBZ, CIMX, KNDD, KPNT, KOME, WXDX, KEDJ, WENZ, WKDF, WMRQ, XTRA, WRZZ) with columns for station name, PD, APD/MD, and a list of songs with their respective play counts.



# TOOL

Gets The F... Out

## ÆNEMA

The Single

On Your Desk

June 4th

Learn To Swim

June 9th



© 1997 Volcano Entertainment, L.L.C.  
All Rights Reserved  
[www.volcanoworld.com](http://www.volcanoworld.com)

World Radio History

From the full length album ÆNEMA  
Produced by Tool and David Bottrill  
Management: Ted Gardner and Nikki Brown at Larrikin

POWER PLAYLISTS

For Week Ending May 25, 1997



Playlists supplied by Broadcast Data Systems' Radio Track service. Songs ranked by number of plays in monitored week. Playlists are listed in order of TBA weekly, beginning with the highest-ranked station. Cumeys are updated twice yearly following the release of the Spring and Fall Arbitron surveys. The number of stations shown each week varies depending upon space.

Grid of 48 radio station playlists (e.g., WLUM, KWOD, KXPK, KZON, WNVE, WEDG, WFNX, WEND, WGRD, WQBK, WQXA, WBRU, KNRK, KISF, XHRM, WPBZ, KXKR, KGDE, WDGE, KMYZ, KENZ, KEDG, WAQZ, KXTE) with columns for station name, PD, APD, and song list with T/W/LW ratings.



Album Sales  
16982 → 19728  
55 On  
SoundScan

# matchbox 20



from the debut album  
***YOURSELF OR SOMEONE LIKE YOU***  
Produced by Matt Serletic for Melisma Productions, Inc.  
Mixed by Greg Archilla and Matt Serletic • Management - LIPPMAN ENTERTAINMENT  
[www.atlantic-records.com](http://www.atlantic-records.com)



THE ATLANTIC GROUP  
© 1997 ATLANTIC RECORDING CORP. A TIME WARNER COMPANY

World Radio History

POWER PLAYLISTS

For Week Ending May 25, 1997



Playlists supplied by Broadcast Data Systems' Radio Track service. Songs ranked by number of plays in monitored week. Playlists are listed in order of TBA weekly count, beginning with the highest-counting station. Counts are updated twice weekly following the release of the Spring and Fall Arbitron surveys. The number of stations shown each week varies depending upon space.

WWCD Columbus PD: Jane Purcell MD: Andy Davis. Table with 30 rows of song titles and counts.

WROX Norfolk PD: Perry Stone MD: Al Mitchell. Table with 30 rows of song titles and counts.

WLIR Long Island PD: Jeff Levine Mus. Coord.: Lynda Lopez. Table with 30 rows of song titles and counts.

KFRR Fresno PD: Don O'Neal AMD: Andy Winford. Table with 30 rows of song titles and counts.

WBZU Richmond PD: JJ Quest MD: Mike Scott. Table with 30 rows of song titles and counts.

KTEG Albuquerque PD: Skip Isley MD: Julie Hoyt. Table with 30 rows of song titles and counts.

WXEG Dayton PD: Jeff Stevens MD: Alan Rance. Table with 30 rows of song titles and counts.

KTCL Denver PD: John Hayes. Table with 30 rows of song titles and counts.

KLZR Kansas City PD: Roger The Dodger MD: Bob Osborn. Table with 30 rows of song titles and counts.

KCXX Riverside/San Bernardino OM/PA: Dwight Arnold MD: Bruce Pulley. Table with 30 rows of song titles and counts.

KROX Austin PD: Sara Trexler APD/MD: Lloyd "LA" Hoccutt. Table with 30 rows of song titles and counts.

KKND New Orleans PD: Vince Richards MD: Rod Ryan. Table with 30 rows of song titles and counts.

WPLA Jacksonville PD: Jim Randall MD: Greg Brady. Table with 30 rows of song titles and counts.

KPOI Honolulu PD: Brock Whaley MD: Nikki Basque. Table with 30 rows of song titles and counts.

WZZZ Lexington PD: Dennis Dillon APD: Steve Isert. Table with 30 rows of song titles and counts.

KICT Wichita PD: Ron Eric Taylor MD: Sherry McKinnon. Table with 30 rows of song titles and counts.

WCYY Portland, ME PD: Herb Ivy MD: Brian James. Table with 30 rows of song titles and counts.

WRXQ Memphis PD: Tony Williams MD: Dianna Goe. Table with 30 rows of song titles and counts.

KFMA Tuscon PD/MD: Suzie Dunn. Table with 30 rows of song titles and counts.

KHTY Santa Barbara PD: Damion Young APD: Deanne Saffren. Table with 30 rows of song titles and counts.

WEQX Albany PD: Ian Harrison. Table with 30 rows of song titles and counts.

WKRL Syracuse PD/MD: Mimi Griswold. Table with 30 rows of song titles and counts.

KAEP Spokane PD: Scott Souhrada MD: Haley Jones. Table with 30 rows of song titles and counts.

KTOZ Springfield, MO PD: Melody Lee MD: Shelly Scott. Table with 30 rows of song titles and counts.



**AIRPOWER** (Minimum 1,100 detections for the first time)

**Total Plays/Gain**

**THE SMASHING PUMPKINS 1480/903**  
*The End Is The Beginning Is The End (Warner Sunset/Warner Bros.)*  
Total Stations: 75/Chart Move: Debut 11  
Heavy (30+ plays): 12 CIMX, KDGE, KEDJ, KEGE, KNRK, KTOZ, KXTE, WBCN, WBZU, WDGE, WRZX, WXRK  
Medium (15-29): 41 KEDG, KFMA, KFRR, KGDE, KICT, KITS, KJEE, KKND, KLZR, KMYZ, KNRX, KOME, KPNT, KROQ, KTBZ, KTEG, KWOD, KXKX, WBRU, WBTZ, WCYF, WEDG, WEND, WENZ, WEQX, WGRD, WHFS, WKQX, WLUM, WNNX, WNVE, WPLY, WQBK, WQXA, WRLG, WROX, WRXR, WXEG, WXZZ, XHRM, XTRA  
Light (Under 15): 22  
New Airplay This Week: 28 KEDG, KHTY, KITS, KLYY, KLZR, KPNT, KPOI, KROX, KTOZ, KWOD, WCYF, WENZ, WEQX, WKDF, WKRL, WPBZ, WPLA, WROX, WRXQ, WRXR, WRZX, WXEG, WXNR, WXPS, WXZZ, XTRA

**AIRPOWER BOUND**

**SNEAKER PIMPS 986/120**  
*6 Underground (Clean Up/Virgin)*  
Total Stations: 61/Chart Move: 27-23  
Heavy (30+ plays): 4 KEDJ, KICT, KLYY, KXKX  
Medium (15-29): 31 KDGE, KEGE, KFMA, KHTY, KJEE, KNRK, KNRX, KOME, KPNT, KROQ, KROX, KTBZ, KTCL, KTEG, KTOZ, KWOD, WAQZ, WBZU, WCYF, WEND, WENZ, WHFS, WKDF, WKQX, WNNX, WPLY, WRXQ, WWCD, WXDX, XHRM, XTRA  
Light (Under 15): 26  
New Airplay This Week: 2 KAEP, WPLY

**COUNTING CROWS 903/-13**  
*Daylight Fading (DGC/Geffen)*  
Total Stations: 60/Chart Move: 26-26  
Heavy (30+): 4 KICT, WBZU, WRXR, WXNR  
Medium (15-29): 32 KAEP, KCXX, KFMA, KFRR, KISF, KLZR, KNRK, KPOI, KROX, KTEG, KTOZ, WAQZ, WBCN, WBRU, WCYF, WDGE, WEDG, WENZ, WEQX, WKQX, WLIR, WPLY, WQXA, WRXQ, WXPS, WXZZ, XHRM  
Light (Under 15): 29  
New Airplay This Week: 2 KTOZ, WMRQ

**DAVE MATTHEWS BAND 864/147**  
*Tripping Billies (RCA)*  
Total Stations: 56/Chart Move: 31-27  
Heavy (30+): 2 WEQX, WRLG  
Medium (15-29): 27 KAEP, KFMA, KGDE, KLZR, KNDD, KNRK, KNRX, KPOI, KROX, KTEG, KTOZ, KWOD, KZON, WBCN, WBRU, WBTZ, WBZU, WCYF, WDGE, WENZ, WGRD, WLUM, WNNX, WPBZ, WPLY, WQXA, WRXQ, WRXR, WXEG, WXPS, XHRM  
Light (Under 15): 22  
New Airplay This Week: 8 KENZ, KFRR, WNVE, WROX, WRZX, WWCD, WXZZ, XHRM

**SUMMERCAMP 815/142**  
*Drawer (Maverick/Reprise)*  
Total Stations: 60/Chart Move: 34-28  
Heavy (30+): 1 KJEE  
Medium (15-29): 28 CIMX, KEDJ, KFRR, KHTY, KITS, KLZR, KNDD, KNRK, KNRX, KOME, KROQ, KROX, KTOZ, KZON, WBZU, WENZ, WGRD, WHFS, WNNX, WNVE, WPBZ, WRLG, WRXQ, WRXR, WRZX, XTRA  
Light (Under 15): 33  
New Airplay This Week: 6 KPOI, KTBZ, KXKX, WBRU, WRXR, WXZZ

**COLLECTIVE SOUL 793/120**  
*Listen (Atlantic)*  
Total Stations: 49/Chart Move: 35-29  
Heavy (30+): 1 WRXQ  
Medium (15-29): 25 KAEP, KCXX, KDGE, KEGE, KICT, KKND, KNRK, KTBZ, KTEG, KTOZ, KWOD, WCYF, WDGE, WENZ, WEQX, WLUM, WNNX, WQXA, WRLG, WROX, WXDX, WXEG, WXNR, WXPS, WXZZ  
Light (Under 15): 23  
New Airplay This Week: 5 KENZ, KNRX, KXKX, WQXA, WRZX

**THAT DOG 687/70**  
*Never Say Never (DGC/Geffen)*  
Total Stations: 53/Chart Move: 39-32  
Heavy (30+): 2 KJEE, KWOD  
Medium (15-29): 21 KDGE, KFMA, KGDE, KHTY, KICT, KLZR, KNRK, KNRX, KOME, KPNT, KROQ, KROX, KTBZ, KXKX, WBZU, WEDG, WHFS, WPBZ, WROX, WRXQ, WRZX  
Light (Under 15): 30  
New Airplay This Week: 4 KGDE, WNNX, WQBK, WXZZ

**COWBOY MOUTH 668/-13**  
*Jenny Says (MCA)*  
Total Stations: 41/Chart Move: 36-33  
Heavy (30+): 6 KEGE, KICT, KKND, WBZU, WKDF, WXPS  
Medium (15-29): 16 KCXX, KGDE, KPNT, KROX, KXPK, KZON, WCYF, WEND, WENZ, WNNX, WRLG, WROX, WRXQ, WRXR, WXEG, XHRM  
Light (Under 15): 19

**SHERYL CROW 645/115**  
*A Change Would Do You Good (A&M)*  
Total Stations: 42/Chart Move: Debut 35  
Heavy (30+): 2 KAEP, WPLY  
Medium (15-29): 21 KEDG, KENZ, KICT, KTEG, KTOZ, KZON, WBRU, WDGE, WEND, WEQX, WGRD, WLIR, WPBZ, WRLG, WRXQ, WWCD, WXDX, WXEG, WXPS, WXZZ, XHRM  
Light (Under 15): 19  
New Airplay This Week: 7 WDGE, WENZ, WEQX, WQBK, WQXA, WRXR, WRZX

**REEL BIG FISH 618/13**  
*Sell Out (Mojo/Universal)*  
Total Stations: 41/Chart Move: 40-37  
Heavy (30+): 2 KWOD, WPLA  
Medium (15-29): 20 KFRR, KICT, KISF, KITS, KJEE, KLZR, KNRK, KNRX, KPNT, KPOI, KROQ, WBZU, WEQX, WFNX, WHFS, WPBZ, WPLY, WROX, XHRM, XTRA  
Light (Under 15): 19  
New Airplay This Week: 2 KEDJ, KGDE

**ABRA MOORE 591/7**  
*Four Leaf Clover (Arista/Arista)*  
Total Stations: 47/Chart Move: Re-Entry 40  
Heavy (30+): 1 KROX  
Medium (15-29): 19 KAEP, KICT, KLYY, KLZR, KNRK, KNRX, KTBZ, KZON, WAQZ, WBTZ, WENZ, WEQX, WNNX, WPBZ, WQBK, WQXA, WRLG, WXDX, WXEG  
Light (Under 15): 27  
New Airplay This Week: 1 WKRL

**CHART BOUND**

**NO DOUBT 579/42**  
*Sunday Morning (Trauma/Interscope)*  
Total Stations: 48  
Heavy (30+): 3 CIMX, KHTY, KTOZ  
Medium (15-29): 15 KDGE, KEGE, KGDE, KICT, KJEE, KLYY, KOME, KROQ, KTEG, KXKX, WCYF, WKQX, WLUM, WXEG, XTRA  
Light (Under 15): 30  
New Airplay This Week: 4 WAQZ, WBTZ, WEQX, WRXR

**LIVE 485/120**  
*Turn My Head (Radioactive/MCA)*  
Total Stations: 35  
Heavy (30+): 3 KITS, KLYY, KWOD  
Medium (15-29): 13 KAEP, KEDJ, KEGE, KNDD, KOME, KROQ, KTEG, WDGE, WHFS, WLUM, WNNX, WXDX, WXRK  
Light (Under 15): 19  
New Airplay This Week: 4 KKND, KZON, WBRU, XTRA

**LUSCIOUS JACKSON 471/15**  
*Under Your Skin (Grand Royal/Capitol)*  
Total Stations: 40  
Heavy (30+): 0  
Medium (15-29): 11 CIMX, KFMA, KITS, KJEE, KLZR, KROX, KZON, WEQX, WPBZ, WRLG, XTRA  
Light (Under 15): 29  
New Airplay This Week: 3 KROQ, WAQZ, WKRL

**SUBLIME 461/76**  
*Wrong Way (Gasoline Alley/MCA)*  
Total Stations: 24  
Heavy (30+): 4 KJEE, KLYY, KWOD, XTRA  
Medium (15-29): 13 CIMX, KEDJ, KFMA, KITS, KOME, KPNT, KROQ, KTEG, WFNX, WHFS, WNNX, WXRK, XHRM  
Light (Under 15): 7  
New Airplay This Week: 2 CIMX, KPNT

**INDIGO GIRLS 431/17**  
*Shame On You (Epic)*  
Total Stations: 33  
Heavy (30+): 1 WXPS  
Medium (15-29): 11 KAEP, KLYY, KXPK, WBZU, WENZ, WEQX, WLIR, WMRQ, WPLY, WXZZ, XHRM  
Light (Under 15): 21  
New Airplay This Week: 3 KTOZ, WGRD, WXNR

**NAKED 413/8**  
*Mann's Chinese (Red Ant)*  
Total Stations: 27  
Heavy (30+): 2 KEDG, KXTE  
Medium (15-29): 9 KCXX, KGDE, KPOI, WBZU, WGRD, WKRL, WNVE, WRXQ, WXPS  
Light (Under 15): 16  
New Airplay This Week: 2 KTBZ, WPLA

**SUPERGRASS 370/220**  
*Cheapskate (Capitol)*  
Total Stations: 48  
Heavy (30+): 0  
Medium (15-29): 9 KJEE, KNDD, WBZU, WCYF, WEND, WFNX, WKRL, WPBZ, WRXQ  
Light (Under 15): 39  
New Airplay This Week: 14 KGDE, KITS, KJEE, KLZR, KNRK, WBRU, WBZU, WDGE, WEND, WEQX, WNNX, WPBZ, WRLG, WRXQ

**COOL FOR AUGUST 286/19**  
*Don't Wanna Be Here (Warner Bros.)*  
Total Stations: 25  
Heavy (30+): 0  
Medium (15-29): 7 KISF, KKND, KPOI, KXKX, WGRD, WNNX, WRLG  
Light (Under 15): 18  
New Airplay This Week: 2 KROX, KZON

**OUR LADY PEACE 278/-4**  
*Superman's Dead (Columbia)*  
Total Stations: 26  
Heavy (30+): 1 WMRQ  
Medium (15-29): 9 CIMX, KKND, KTBZ, KXKX, WBTZ, WEDG, WKRL, WPBZ, WQBK  
Light (Under 15): 16  
New Airplay This Week: 1 WEQX

**OMC 273/36**  
*How Bizarre (Huh!/Mercury)*  
Total Stations: 13  
Heavy (30+): 5 KDGE, KENZ, KLYY, WAQZ, WXZZ  
Medium (15-29): 4 KTCL, KXPK, KXKX, WLIR  
Light (Under 15): 4

**RADISH 260/-6**  
*Little Pink Stars (Mercury)*  
Total Stations: 34  
Heavy (30+): 0  
Medium (15-29): 3 WMRQ, WNNX, WPBZ  
Light (Under 15): 31  
New Airplay This Week: 1 WFNX

**MICHAEL PENN 252/140**  
*Try (57/Epic)*  
Total Stations: 30  
Heavy (30+): 0  
Medium (15-29): 7 KROX, WBZU, WEQX, WKRL, WQXA, WRLG, WXEG  
Light (Under 15): 23  
New Airplay This Week: 12 KGDE, KROX, KTCL, KXKX, WAQZ, WENZ, WEQX, WHYT, WPBZ, WWCD, WXEG, WXPS

**SHAWN COLVIN 249/-4**  
*Sunny Came Home (Columbia)*  
Total Stations: 17  
Heavy (30+): 2 KLYY, WAQZ  
Medium (15-29): 9 KENZ, KITS, KNRK, KTCL, KXKX, WKQX, WLUM, WNNX, XHRM  
Light (Under 15): 8

**MONACO 248/87**  
*What Do You Want From Me? (Polydor)*  
Total Stations: 25  
Heavy (30+): 0  
Medium (15-29): 9 KENZ, KITS, KNRK, KTCL, KXKX, WKQX, WLUM, WNNX, XHRM  
Light (Under 15): 16  
New Airplay This Week: 5 KLYY, KTCL, KXPK, WNNX, XTRA

**FAITH NO MORE 235/32**  
*Last Cup Of Sorrow (Slash/Reprise)*  
Total Stations: 31  
Heavy (30+): 0

**MOST NEW AIRPLAY THIS WEEK**

**THE SMASHING PUMPKINS 26**  
*The End Is The Beginning Is The End (Warner Sunset/Warner Bros.)*

**SUPERGRASS 14**  
*Cheapskate (Capitol)*

**MICHAEL PENN 12**  
*Try (57/Epic)*

**BLUES TRAVELER 11**  
*Carolina Blues (A&M)*

**DEL AMITRI 11**  
*Not Where It's At (A&M)*

Medium (15-29): 7 KKND, KXTE, WBCN, WBZU, WCYF, WKRL, WROX  
Light (Under 15): 24  
New Airplay This Week: 3 KEGE, KLZR, KTEG

**THE CUNNINGHAMS 232/52**  
*Bottle Rockets (Revolution)*  
Total Stations: 28  
Heavy (30+): 0  
Medium (15-29): 6 KISF, KKND, KNDD, KNRX, WBZU, WRXQ  
Light (Under 15): 22  
New Airplay This Week: 2 KNRK, WXEG

**THE LIGHTNING SEEDS 229/70**  
*You Showed Me (Hollywood)*  
Total Stations: 25  
Heavy (30+): 1 KITS  
Medium (15-29): 6 KROX, WENZ, WPLA, WRLG, WXPS, XTRA  
Light (Under 15): 18  
New Airplay This Week: 4 KROX, WENZ, WPBZ, WPLA

**SPACE 226/-9**  
*Neighbourhood (Gut Reaction/Universal)*  
Total Stations: 22  
Heavy (30+): 1 XTRA  
Medium (15-29): 6 KEDG, KHTY, KTCL, KXPK, KXKX, XHRM  
Light (Under 15): 15  
New Airplay This Week: 1 KJEE

**ECHO & THE BUNNYMEN 197/75**  
*I Want To Be There (When You Come) (London/Island)*  
Total Stations: 41  
Heavy (30+): 1 XHRM  
Medium (15-29): 3 WBCN, WHFS, XTRA  
Light (Under 15): 37  
New Airplay This Week: 3 KLYY, WKQX, WMRQ

**SAVE FERRIS 191/12**  
*The World Is New (Starpool)*  
Total Stations: 17  
Heavy (30+): 1 KLYY  
Medium (15-29): 4 KCXX, KHTY, KROX, KWOD  
Light (Under 15): 12  
New Airplay This Week: 2 WENZ, WXZZ

**THE NIXONS 190/54**  
*Baton Rouge (MCA)*  
Total Stations: 23  
Heavy (30+): 0  
Medium (15-29): 5 KKND, KLZR, KNRX, WDGE, WKRL  
Light (Under 15): 18  
New Airplay This Week: 4 WBRU, WDGE, WGRD, WQXA

**DEL AMITRI 180/130**  
*Not Where It's At (A&M)*  
Total Stations: 28  
Heavy (30+): 0  
Medium (15-29): 4 KPOI, KXPK, KZON, WXEG  
Light (Under 15): 24  
New Airplay This Week: 11 CIMX, KAEP, KISF, KPOI, WEQX, WNNX, WRLG, WWCD, WXDX, WXEG, XHRM

**BARENAKED LADIES 171/13**  
*The Old Apartment (Reprise)*  
Total Stations: 19  
Heavy (30+): 0  
Medium (15-29): 4 CIMX, WAQZ, WKDF, WMRQ  
Light (Under 15): 15

**BLUES TRAVELER 153/146**  
*Carolina Blues (A&M)*  
Total Stations: 29  
Heavy (30+): 0  
Medium (15-29): 2 WDGE, WGRD  
Light (Under 15): 27  
New Airplay This Week: 11 KGDE, KMYZ, KTEG, KZON, WBZU, WDGE, WGRD, WNVE, WPLY, WQBK, WRLG

**COWARD 145/37**  
*I Don't Care (Elektra/EEG)*  
Total Stations: 21  
Heavy (30+): 0  
Medium (15-29): 2 WKRL, WMRQ  
Light (Under 15): 19  
New Airplay This Week: 3 WBZU, WEQX, WMRQ

**SISTER HAZEL 111/2**  
*All For You (Universal)*  
Total Stations: 7  
Heavy (30+): 1 KTOZ  
Medium (15-29): 3 KENZ, KLYY, WRXR  
Light (Under 15): 3

**GUS GUS 110/36**  
*Believe (4AD/Warner Bros.)*  
Total Stations: 18  
Heavy (30+): 0  
Medium (15-29): 3 KJEE, KNDD, XTRA  
Light (Under 15): 15  
New Airplay This Week: 3 KFMA, KJEE, KNRK

**PRODIGY 109/62**  
*Breathe (XL Mute/Maverick/Warner Bros.)*  
Total Stations: 24  
Heavy (30+): 0  
Medium (15-29): 1 KLZR  
Light (Under 15): 23  
New Airplay This Week: 3 CIMX, KLZR, WLUM

**SOULS 107/5**  
*Cello (Trauma/Interscope)*  
Total Stations: 27  
Heavy (30+): 0  
Medium (15-29): 2 KEDG, WKQX  
Light (Under 15): 25  
New Airplay This Week: 1 KWOD

**MXPX 100/57**  
*Chick Magnet (Tooth & Nail)*  
Total Stations: 15  
Heavy (30+): 0  
Medium (15-29): 3 KEDJ, KEGE, KHTY  
Light (Under 15): 12  
New Airplay This Week: 5 KEDJ, KEGE, KOME, KTCL, XHRM

**SOCIAL DISTORTION 95/8**  
*Don't Drag Me Down (550 Music)*  
Total Stations: 10  
Heavy (30+): 0  
Medium (15-29): 2 KNDD, KPNT  
Light (Under 15): 8  
New Airplay This Week: 1 XTRA

**MANBREAK 86/61**  
*Ready Or Not (Almo Sounds/Geffen)*  
Total Stations: 30  
Heavy (30+): 0  
Medium (15-29): 0  
Light (Under 15): 30  
New Airplay This Week: 5 KKND, KXTE, WBCN, WEQX, WRLG

**PULSARS 82/24**  
*Tunnel Song (Almo Sounds/Geffen)*  
Total Stations: 15  
Heavy (30+): 0  
Medium (15-29): 1 WXEG  
Light (Under 15): 14  
New Airplay This Week: 2 KTCL, WPBZ

**CHANTAL KREVIASZUK 82/21**  
*God Made Me (Columbia)*  
Total Stations: 14  
Heavy (30+): 0  
Medium (15-29): 1 CIMX  
Light (Under 15): 13  
New Airplay This Week: 2 WBTZ, WPBZ

Airpower awarded to those records which attain 1,100 detections for the first time. New airplay lists those stations registering six or more detections per week on a record for the first time. ★ Initial impact: records appearing on this page for the first time.

SONG ACTIVITY REPORTS For Week Ending May 25, 1997



Detailed song tracking information for the last 3 weeks... Total plays and gain do not include video play...

COLLECTIVE SOUL 793/120 Listen (Atlantic) Total Stations: 49 Chart Move: 35-29

COOL FOR AUGUST 286/19 Don't Wanna Be Here (Warner Bros.) Total Stations: 25

SHERYL CROW 645/115 A Change Would Do You Good (A&M) Total Stations: 42 Chart Move: Debut 35

THE CUNNINGHAMS 232/52 Bottle Rockets (Revolution) Total Stations: 28

DEPECHE MODE 1828/22 It's No Good (Mute/Reprise) Total Stations: 76 Chart Move: 4-5

FAITH NO MORE 235/32 Last Cup Of Sorrow (Slash/Reprise) Total Stations: 31

INDIGO GIRLS 431/17 Shame On You (Epic) Total Stations: 33

K'S CHOICE 1730/120 Not An Addict (550 Music) Total Stations: 74 Chart Move: 11-6

THE LIGHTNING SEEDS 229/70 You Showed Me (Hollywood) Total Stations: 25

LIVE 485/120 Turn My Head (Radioactive/MCA) Total Stations: 35

LUSCIOUS JACKSON 471/15 Under Your Skin (Grand Royal/Capitol) Total Stations: 40

MATCHBOX 20 1429/65 Push (Lava/Atlantic) Total Stations: 67 Chart Move: 18-13

DAVE MATTHEWS BAND 864/147 Tripping Billies (RCA) Total Stations: 56 Chart Move: 31-27

THE MIGHTY BOSTONES 2305/59 The Impression That I Got (Big Rig/Mercury) Total Stations: 78 Chart Move: 2-2

MONACO 248/87 What Do You Want From Me? (Polydor) Total Stations: 25



# BREATHE



THE NEW SINGLE & VIDEO FROM THE NEW ALBUM  
THE FAT OF THE LAND IN STORES 7.1.97

SEE THEM HEADLINING LOLLAPALOOZA ON SELECTED DATES THIS SUMMER

EARLY BELIEVERS INCLUDE:

- |      |      |      |           |
|------|------|------|-----------|
| KROQ | WXRK | WBCN | 99X       |
| WHFS | 91X  | KITS | KOME      |
| KPNT | CIMX | WFNX | KTCL      |
| WNVE | KLZR | WBTZ | and more! |



MUTE

XL



© 1997 Mute Music, a Division of Warner Music Group



For Week Ending May 25, 1997

AMM Broadcast Data Systems

ABRA MOORE 591/7

Four Leaf Clover (Arista/Arista)

Total Stations: 47 Chart Move: Re-Entry 40

Table with columns for city, station, and song activity for ABRA MOORE.

NAKED 413/8

Mann's Chinese (Red Ant)

Total Stations: 27

Table with columns for city, station, and song activity for NAKED.

NO DOUBT 579/42

Sunday Morning (Trauma/Interscope)

Total Stations: 48

Table with columns for city, station, and song activity for NO DOUBT.

OMC 273/36

How Bizarre (Huh!/Mercury)

Total Stations: 13

Table with columns for city, station, and song activity for OMC.

MICHAEL PENN 252/140

Try (57/Epic)

Total Stations: 30

Table with columns for city, station, and song activity for MICHAEL PENN.

REEL BIG FISH 618/13

Sell Out (Mojo/Universal)

Total Stations: 41 Chart Move: 40-37

Table with columns for city, station, and song activity for REEL BIG FISH.

THE SMASHING PUMPKINS 1480/903

The End Is The Beginning Is The End (Warner Sunset/Warner Bros.)

Total Stations: 75 Chart Move: Debut 11

Table with columns for city, station, and song activity for THE SMASHING PUMPKINS.

SNEAKER PIMPS 986/120

6 Underground (Clean Up/Virgin)

Total Stations: 61 Chart Move: 27-23

Table with columns for city, station, and song activity for SNEAKER PIMPS.

SUBLIME 461/76

Wrong Way (Gasoline Alley/MCA)

Total Stations: 24

Table with columns for city, station, and song activity for SUBLIME.

SUMMERCAMP 815/142

Drawer (Maverick/Reprise)

Total Stations: 60 Chart Move: 34-28

Table with columns for city, station, and song activity for SUMMERCAMP.

SUPERGRASS 370/220

Cheapskate (Capitol)

Total Stations: 48

Table with columns for city, station, and song activity for SUPERGRASS.

THAT DOG 687/70

Never Say Never (DGC/Geffen)

Total Stations: 53 Chart Move: 39-32

Table with columns for city, station, and song activity for THAT DOG.

TOAD THE WET SPROCKET 1321/18

Come Down (Columbia)

Total Stations: 77 Chart Move: 19-19

Table with columns for city, station, and song activity for TOAD THE WET SPROCKET.

TONIC 1899/62

If You Could Only See (Polydor/A&M)

Total Stations: 76 Chart Move: 6-3

Table with columns for city, station, and song activity for TONIC.

THE WALLFLOWERS 1449/146

The Difference (Interscope)

Total Stations: 73 Chart Move: 20-12

Table with columns for city, station, and song activity for THE WALLFLOWERS.



POWER PLAYLISTS

KFOG San Francisco PD: Paul Marszalek MD: Bill Evans. Chart with columns for rank, title, and artist.

WXRT Chicago VP/Programming: Norm Winer MD: Patty Martin. Chart with columns for rank, title, and artist.

WBOS Boston PD: Jim Herron MD: Cliff Nash. Chart with columns for rank, title, and artist.

KTCZ Minneapolis PD: Lauren MacLeash MD: Jane Fredenicksen. Chart with columns for rank, title, and artist.

KBCO Denver PD: Dave Benson MD: Scott Arbrough. Chart with columns for rank, title, and artist.

WHPT Tampa PD: Chuck Beck APD/MD: Chris Taylor. Chart with columns for rank, title, and artist.

WVRV St. Louis PD: Scott Strong MD: Mike Richter. Chart with columns for rank, title, and artist.

KMTT Seattle SM: Chris Mays MD: Dean Carlson. Chart with columns for rank, title, and artist.

CIDR Detroit PD: Murray Brookshaw MD: Ann Delisi. Chart with columns for rank, title, and artist.

KINK Portland, OR PD/MD: Carl Widing. Chart with columns for rank, title, and artist.

WXRV Boston PD: Joanne Doody MD: Mike Mullaney. Chart with columns for rank, title, and artist.

WKOC Norfolk PD: Perry Stone APD/MD: Holly Williams. Chart with columns for rank, title, and artist.

Main chart with columns for THIS WEEK, LAST WEEK, WKS. ON CHART, TITLE/LABEL/PROMOTION LABEL, ARTIST, TW, LW. Includes 'NO. 1' starburst and 'NEW' indicator.

MODERN ADULT chart with columns for THIS WEEK, LAST WEEK, WKS. ON CHART, TITLE/LABEL/PROMOTION LABEL, ARTIST, TW, LW. Includes 'NO. 1' starburst and 'AIRPOWER' starburst.

Records showing an increase in detections over the previous week, regardless of chart movement. A record which has been on the chart for more than 20 weeks will not receive a bullet, even if it registers an increase in detections.

For Week Ending May 25, 1997

COMBINED ROCK MONITOR AIRPLAY										AIRPLAY THIS WEEK BY FORMAT									
TW	LW	WKS	TITLE (LABEL/PROMOTION LABEL)	ARTIST	THIS WEEK			LAST WEEK			MAINSTREAM			MODERN			TRIPLE-A		
					Audience (millions)	Detections No.	Rank	Audience (millions)	Detections No.	Rank	Audience (millions)	Detections No.	Rank	Audience (millions)	Detections No.	Rank	Audience (millions)	Detections No.	Rank
1	1	15	GONE AWAY (COLUMBIA)	THE OFFSPRING	21.9107	3300	2	23.4914	3583	2	12.1235	1731	2	9.7612	1551	10	0.0260	18	—
2	4	9	IF YOU COULD ONLY SEE (POLYDOR/A&M)	TONIC	20.4592	3492	1	19.6142	3463	3	8.9506	1552	3	11.3807	1899	3	0.1279	41	—
3	2	17	THE FRESHMEN (RCA)	THE VERVE PIPE	20.2173	3165	4	22.0371	3594	1	5.1958	866	12	12.5262	1888	4	2.4953	411	1
4	3	10	SEMI-CHARMED LIFE (ELEKTRA/EEG)	THIRD EYE BLIND	19.7218	3170	3	20.4641	3241	5	1.7577	405	40	16.1641	2467	1	1.8000	298	10
5	6	10	THE IMPRESSION THAT I GET (BIG RIG/MERCURY)	THE MIGHTY MIGHTY BOSSTONES	17.7249	2543	8	17.6207	2473	10	1.3949	194	—	16.2646	2305	2	0.0654	44	—
6	7	9	PUSH (LAVA/ATLANTIC)	MATCHBOX 20	16.9770	2958	5	16.4510	2874	6	7.0192	1301	4	8.7181	1429	13	1.2397	228	14
7	8	6	MONKEY WRENCH (ROSWELL/CAPITOL)	FOO FIGHTERS	16.2948	2525	10	16.3931	2529	8	5.4824	889	10	10.8011	1627	9	0.0113	9	—
8	11	5	THE DIFFERENCE (INTERSCOPE)	THE WALLFLOWERS	16.1254	2685	7	15.3063	2479	9	5.7565	964	8	9.0966	1449	12	1.2723	272	12
9	<b>NEW</b>		THE END IS THE BEGINNING IS THE END (WARNER SUNSET/WARNER BROS.)	THE SMASHING PUMPKINS	15.0363	2021	14	5.8219	729	59	3.7472	520	29	11.1909	1480	11	0.0982	21	—
10	9	18	VOLCANO GIRLS (MINTY FRESH/OUTPOST/GEFFEN)	VERUCA SALT	14.8700	2121	13	16.3210	2394	11	6.4019	795	14	8.4625	1324	18	0.0056	2	—
11	5	14	STARING AT THE SUN (ISLAND)	U2	14.8332	2701	6	18.7226	3320	4	5.8036	1002	7	6.8684	1380	15	2.1612	319	8
12	10	28	ONE HEADLIGHT (INTERSCOPE)	THE WALLFLOWERS	14.2721	1925	18	16.1062	2239	12	4.9597	704	19	7.3974	949	25	1.9150	272	11
13	13	5	LITTLE WHITE LIE (TRACK FACTORY/MCA)	SAMMY HAGAR	13.5281	1973	15	13.6365	2079	16	13.0679	1954	1	0.4431	15	—	0.0171	4	—
14	14	7	SONG 2 (FOOD/PARLOPHONE/VIRGIN)	BLUR	13.2951	2175	12	13.2510	2181	13	1.8197	453	37	11.4616	1713	7	0.0138	9	—
15	12	7	FREAKS (RADIOACTIVE/MCA)	LIVE	13.2028	2532	9	14.9241	2704	7	6.7070	1137	6	6.4768	1376	16	0.0190	19	—
16	15	8	IT'S NO GOOD (MUTE/REPRISE)	DEPECHE MODE	12.7159	1936	17	12.3994	1897	17	0.3533	56	—	12.1071	1828	5	0.2555	52	—
17	16	6	COME DOWN (COLUMBIA)	TOAD THE WET SPROCKET	12.0206	2189	11	11.9325	2105	14	2.1627	520	30	7.8402	1321	19	2.0177	348	4
18	27	10	NOT AN ADDICT (550 MUSIC)	K'S CHOICE	10.7770	1797	19	9.6881	1680	22	0.2171	64	—	10.5528	1730	6	0.0071	3	—
19	18	9	BITCH (CAPITOL)	MEREDITH BROOKS	10.4800	1973	16	11.6451	2099	15	1.1704	224	—	8.8387	1653	8	0.4709	96	—
20	19	25	CRASH INTO ME (RCA)	DAVE MATTHEWS BAND	10.3657	1224	30	11.4240	1301	32	0.6821	101	—	8.1437	900	—	1.5399	223	17
21	17	20	SANTERIA (GASOLINE ALLEY/MCA)	SUBLIME	10.2571	1536	23	11.9056	1700	21	0.8255	133	—	9.2629	1334	17	0.1687	69	—
22	23	7	COLD CONTAGIOUS (TRAUMA/INTERSCOPE)	BUSH	9.7729	1621	22	10.1943	1752	20	3.4925	652	22	6.2772	968	24	0.0032	1	—
23	32	3	LISTEN (ATLANTIC)	COLLECTIVE SOUL	9.7008	1706	20	8.0585	1416	29	4.7706	754	17	3.8436	793	29	1.0866	159	20
24	25	7	HELL (MAMMOTH)	SQUIRREL NUT ZIPPERS	9.2623	1496	24	9.9243	1489	26	0.0840	34	—	9.0096	1425	14	0.1687	37	—
25	24	7	DAYLIGHT FADING (DGC/GEFFEN)	COUNTING CROWS	9.2135	1656	21	10.1639	1789	19	3.2278	532	28	4.6136	903	26	1.3721	221	18
26	33	3	6 UNDERGROUND (CLEAN UP/VIRGIN)	SNEAKER PIMPS	9.0549	1057	39	7.6445	916	47	0.0410	11	—	8.5528	986	23	0.4611	60	—
27	29	24	GREEDY FLY (TRAUMA/INTERSCOPE)	BUSH	8.8228	1103	37	8.9179	1178	36	3.6374	477	32	5.1840	625	36	0.0014	1	—
28	21	17	PRECIOUS DECLARATION (ATLANTIC)	COLLECTIVE SOUL	8.6818	1354	25	11.0428	1804	18	6.1249	884	11	2.4204	437	—	0.1365	33	—
29	20	13	EYE (NOTHING/INTERSCOPE)	THE SMASHING PUMPKINS	8.4418	1325	26	11.1410	1616	23	0.2021	20	—	8.0232	1281	20	0.2165	24	—
30	22	13	THE NEW POLLUTION (DGC/GEFFEN)	BECK	8.4059	1182	32	10.3918	1444	27	0.0743	20	—	8.2606	1138	21	0.0710	24	—
31	28	19	LAKINI'S JUICE (RADIOACTIVE/MCA)	LIVE	8.0998	1160	33	9.2763	1358	30	4.5616	566	25	3.5185	585	—	0.0197	9	—
32	26	12	SIGN OF THE TIMES (EMI)	QUEENSRYCHE	7.3118	1257	28	9.8898	1589	24	7.3118	1257	5	—	—	—	—	—	—
33	30	16	YOUR WOMAN (BRILLIANT/CHRYSALIS/EMI)	WHITE TOWN	6.9340	1253	29	8.3733	1426	28	0.1032	33	—	5.8851	1068	22	0.9457	152	—
34	36	2	A CHANGE WOULD DO YOU GOOD (A&M)	SHERYL CROW	6.7761	1068	38	7.0186	884	49	1.0653	124	—	3.8344	645	35	1.8764	299	9
35	<b>RE-ENTRY</b>		TRIPPIN' ON A HOLE IN A PAPER HEART (ATLANTIC)	STONE TEMPLE PILOTS	6.5011	826	53	6.3704	838	52	3.1607	381	—	3.3362	441	—	0.0042	4	—
36	40	39	WHAT I GOT (GASOLINE ALLEY/MCA)	SUBLIME	6.4985	969	42	6.4320	1019	40	1.2425	212	—	5.0067	713	—	0.2493	44	—
37	31	11	ELEGANTLY WASTED (MERCURY)	INXS	6.4509	1156	34	8.2726	1529	25	0.8109	109	—	3.5452	710	31	2.0948	337	5
38	<b>NEW</b>		TURN MY HEAD (RADIOACTIVE/MCA)	LIVE	6.2210	524	95	5.6004	398	131	0.0572	9	—	6.0966	485	—	0.0672	30	—
39	34	18	KING NOTHING (ELEKTRA/EEG)	METALLICA	5.9721	828	51	7.4856	942	42	5.3478	763	16	0.6243	65	—	—	—	—
40	<b>NEW</b>		TRIPPING BILLIES (RCA)	DAVE MATTHEWS BAND	5.9110	1290	27	4.7237	1117	37	0.7462	199	—	3.9825	864	27	1.1823	227	15

Records showing an increase in audience over the previous week, regardless of chart movement. Rankings broken down by mainstream, modern and triple-A formats (on right side of this page) correspond to charts printed in this week's Monitor and therefore rankings do not exist for recurrences and records below No. 40 (No. 20 for triple-A). Audience computed by cross-referencing exact times of airplay with Arbitron listener data. ©1997, Billboard/BPI Communications.



## Echo & The Bunnymen

IMPACTING JUNE 2ND

"I WANT TO BE THERE (WHEN YOU COME)"

PLAYING ON:

KTBZ	Q101	WBCN	WBRU	WHFS	KPNT
KEDG	WXEG	XTRA	KQXR	WDST	KNRK
LIVE 105	KNSX	WHY	XHRM	KTCL	WMAD
KHTY	WKRO	KMBY	WMRQ	WEDG	WEQX

AND MANY MORE!



a PolyGram company

# THE SMASHING PUMPKINS

"THE END IS THE BEGINNING IS THE END"

#1 GREATEST GAINER EVERYWHERE!



**MODERN ROCK**

**MONITOR DEBUT (11) \*\*\*AIRPOWER\*\*\***

#1 MOST NEW AIRPLAY 2ND WEEK IN A ROW!  
1555 BDS DETECTIONS (+642)

**ROCK**

**MONITOR DEBUT (29)**

#1 MOST NEW AIRPLAY  
**MOST ADDED - 2ND WEEK IN A ROW!**  
576 BDS DETECTIONS (+319)

## BATMAN & ROBIN

**BIG PICTURE DEBUT #9 - AUDIENCE REACH ALREADY OVER 15 MILLION!**

**ALBUM STREET DATE: 6/10 IN THEATRES: 6/20**

Produced by Nellea Hooper and Billy Corgan Management: Cliff Burnstein and Peter Mensch for O Pnme Management The Smashing Pumpkins Appear Courtesy of Virgin Records America, Inc. <http://www.wbr.com/batman> <http://www.wbr.com/radio>

MUSIC FROM AND INSPIRED BY THE

# "BATMAN & ROBIN"

MOTION PICTURE



Motion Picture Elements ©1997 Warner Bros. ©1997 Warner Bros. Records Inc. BATMAN, ROBIN and all related characters, names and indicia are trademarks of DC Comics ©1996.



World Radio History

Compiled from a national sample of airplay reported by Broadcast Data Systems. Radio Track service to Rock Airplay Monitor. 100 minimums rule and 79 field and track stations are automatically monitored 24 hours a day, 7 days a week. Songs are ranked by number of detections. © 1997, Broadcast Data Systems.

THIS WEEK	LAST WEEK	WKS. ON CHART	MAINSTREAM		DETECTIONS	
			TITLE/LABEL/PROMOTION LABEL	ARTIST	TW	LW
<b>*** No. 1 ***</b>						
1	1	5	LITTLE WHITE LIE TRACK FACTORY/MCA	SAMMY HAGAR	1954	2065
2	2	15	GONE AWAY COLUMBIA	THE OFFSPRING	1731	1825
3	3	9	IF YOU COULD ONLY SEE POLYDOR/A&M	TONIC	1552	1590
4	5	13	PUSH LAVA/ATLANTIC	MATCHBOX 20	1301	1317
5	4	12	SIGN OF THE TIMES EMI	QUEENSRYCHE	1257	1588
6	8	7	FREAKS RADIOACTIVE/MCA	LIVE	1137	1158
7	6	13	STARING AT THE SUN ISLAND	U2	1002	1247
8	12	4	THE DIFFERENCE INTERSCOPE	THE WALLFLOWERS	964	893
9	10	5	HOLE IN MY SOUL COLUMBIA	AEROSMITH	962	931
10	15	5	MONKEY WRENCH ROSWELL/CAPITOL	FOO FIGHTERS	889	847
11	7	17	PRECIOUS DECLARATION ATLANTIC	COLLECTIVE SOUL	884	1167
12	9	16	THE FRESHMEN RCA	THE VERVE PIPE	866	1019
13	16	10	MANN'S CHINESE RED ANT	NAKED	804	844
14	11	16	VOLCANO GIRLS MINTY FRESH/OUTPOST/GEFFEN	VERUCA SALT	795	924
15	21	2	AFRAID MOTLEY/ELEKTRA/EEG	MOTLEY CRUE	779	679
16	13	21	KING NOTHING ELEKTRA/EEG	METALLICA	763	860
17	27	3	LISTEN ATLANTIC	COLLECTIVE SOUL	754	609
18	18	5	ROCKCROWN MAMMOTH/ATLANTIC	SEVEN MARY THREE	743	765
19	17	29	ONE HEADLIGHT INTERSCOPE	THE WALLFLOWERS	704	832
20	14	14	LIE TO ME A&M	JONNY LANG	704	849
21	22	7	DON'T WANNA BE HERE WARNER BROS.	COOL FOR AUGUST	666	657
22	20	8	COLD CONTAGIOUS TRAUMA/INTERSCOPE	BUSH	652	704
23	28	2	TRUST CAPITOL	MEGADETH	649	568
24	19	15	FALLING IN LOVE (IS HARD ON THE KNEES) COLUMBIA	AEROSMITH	591	741
25	23	19	LAKINI'S JUICE RADIOACTIVE/MCA	LIVE	566	642
26	24	5	TRAVELIN' MAN CMC INTERNATIONAL	LYNYRD SKYNYRD	561	628
27	25	11	RHINOSAUR A&M	SOUNDGARDEN	549	622
28	26	6	DAYLIGHT FADING DGC/GEFFEN	COUNTING CROWS	532	613
29	NEW ▶		THE END IS THE BEGINNING IS THE END WARNER SUNSET/WARNER BROS.	THE SMASHING PUMPKINS	520	150
30	35	4	COME DOWN COLUMBIA	TOAD THE WET SPROCKET	520	466
31	29	6	FREAK EPIC	SILVERCHAIR	520	559
32	34	24	GREEDY FLY TRAUMA/INTERSCOPE	BUSH	477	468
33	30	5	MAGNOLIA CAPRICORN/MERCURY	THE SCREAMIN' CHEETAH WHEELIES	477	553
34	31	16	H. ZOO/VOLCANO	TOOL	469	503
35	NEW ▶		BATON ROUGE MCA	THE NIXONS	463	163
36	32	7	JENNY SAYS MCA	COWBOY MOUTH	458	493
37	38	2	SONG 2 FOOD/PARLOPHONE/VIRGIN	BLUR	453	436
38	33	4	PINK COLUMBIA	AEROSMITH	450	471
39	36	9	WELCOME MERCURY	OUTHOUSE	420	459
40	39	3	SEMI-CHARMED LIFE ELEKTRA/EEG	THIRD EYE BLIND	405	411

THIS WEEK	LAST WEEK	WKS. ON CHART	MODERN		DETECTIONS	
			TITLE/LABEL/PROMOTION LABEL	ARTIST	TW	LW
<b>*** No. 1 ***</b>						
1	1	11	SEMI-CHARMED LIFE ELEKTRA/EEG	THIRD EYE BLIND	2467	2555
2	2	14	THE IMPRESSION THAT I GET BIG RIG/MERCURY	THE MIGHTY MIGHTY BOSSTONES	2305	2246
3	6	11	IF YOU COULD ONLY SEE POLYDOR/A&M	TONIC	1899	1837
4	3	17	THE FRESHMEN RCA	THE VERVE PIPE	1888	2131
5	4	9	IT'S NO GOOD MUTE/REPRISE	DEPECHE MODE	1828	1806
6	11	11	NOT AN ADDICT 550 MUSIC	K'S CHOICE	1730	1610
7	7	9	SONG 2 FOOD/PARLOPHONE/VIRGIN	BLUR	1713	1735
8	5	9	BITCH CAPITOL	MEREDITH BROOKS	1653	1817
9	10	6	MONKEY WRENCH ROSWELL/CAPITOL	FOO FIGHTERS	1627	1671
10	8	14	GONE AWAY COLUMBIA	THE OFFSPRING	1551	1743
<b>*** AIRPOWER ***</b>						
11	NEW ▶		THE END IS THE BEGINNING IS THE END WARNER SUNSET/WARNER BROS.	THE SMASHING PUMPKINS	1480	577
12	20	4	THE DIFFERENCE INTERSCOPE	THE WALLFLOWERS	1449	1303
13	18	6	PUSH LAVA/ATLANTIC	MATCHBOX 20	1429	1364
14	16	9	HELL MAMMOTH	SQUIRREL NUT ZIPPERS	1425	1436
15	9	13	STARING AT THE SUN ISLAND	U2	1380	1692
16	13	7	FREAKS RADIOACTIVE/MCA	LIVE	1376	1532
17	14	21	SANTERIA GASOLINE ALLEY/MCA	SUBLIME	1334	1486
18	15	18	VOLCANO GIRLS MINTY FRESH/OUTPOST/GEFFEN	VERUCA SALT	1324	1468
19	19	6	COME DOWN COLUMBIA	TOAD THE WET SPROCKET	1321	1303
20	12	12	EYE NOTHING/INTERSCOPE	THE SMASHING PUMPKINS	1281	1576
21	17	16	THE NEW POLLUTION DGC/GEFFEN	BECK	1138	1397
22	21	16	YOUR WOMAN BRILLIANT/CHRYSALIS/EMI	WHITE TOWN	1068	1272
23	27	7	6 UNDERGROUND CLEAN UP/VIRGIN	SNEAKER PIMPS	986	866
24	23	7	COLD CONTAGIOUS TRAUMA/INTERSCOPE	BUSH	968	1048
25	22	26	ONE HEADLIGHT INTERSCOPE	THE WALLFLOWERS	949	1094
26	26	6	DAYLIGHT FADING DGC/GEFFEN	COUNTING CROWS	903	916
27	31	2	TRIPPING BILLIES RCA	DAVE MATTHEWS BAND	864	717
28	34	2	DRAWER MAVERICK/REPRISE	SUMMERCAMP	815	673
29	35	2	LISTEN ATLANTIC	COLLECTIVE SOUL	793	673
30	25	13	WHERE YOU GET LOVE ZOO/VOLCANO	MATTHEW SWEET	712	937
31	24	11	ELEGANTLY WASTED MERCURY	INXS	710	954
32	39	2	NEVER SAY NEVER DGC/GEFFEN	THAT DOG	687	617
33	36	4	JENNY SAYS MCA	COWBOY MOUTH	668	681
34	30	12	SLEEP TO DREAM CLEAN SLATE/WORK	FIONA APPLE	652	752
35	NEW ▶		A CHANGE WOULD DO YOU GOOD A&M	SHERYL CROW	645	530
36	32	24	GREEDY FLY TRAUMA/INTERSCOPE	BUSH	625	707
37	40	3	SELL OUT MOJO/UNIVERSAL	REEL BIG FISH	618	605
38	28	11	BATTLE OF WHO COULD CARE LESS 550 MUSIC	BEN FOLDS FIVE	615	817
39	29	7	FREAK EPIC	SILVERCHAIR	608	756
40	RE-ENTRY		FOUR LEAF CLOVER ARISTA AUSTIN/ARISTA	ABRA MOORE	591	584

Records showing an increase in detections over the previous week, regardless of chart movement. A record which has been on either chart for more than 20 weeks will not receive a bullet, even if it registers an increase in detections. Airpower awarded to those records which attain 800 detections (mainstream) or 1,100 (modern) for the first time. If two records are tied in number of plays, the record being played on more stations is placed first. Records below the top 20 are removed from the chart after 26 weeks.

• The New Song And Video  
• Over 1.5 Million Albums Sold In The U.S.

# sublime

## WRONG WAY

Produced by Paul Leary • Management: Jon Phillips & Jason Westfall

GASOLINE ALLEY  
MCA Get AMPed: [www.mcarecords.com](http://www.mcarecords.com)