

# COUNTRY AIRPLAY Monitor

• We Listen To Radio •

October 21, 1994 \$ 4.95 Volume 2 • No. 44

## COUNTRY HIGHLIGHTS

#1

★★★★ NO. 1 ★★★★★

**ALAN JACKSON**  
*Livin' On Love (ARISTA)*

★★★★ AIRPOWER ★★★★★

GEORGE STRAIT • *The Big One (MCA)*

DAVID BALL • *When The Thought Of You Catches . . . (WARNER BROS.)*

ALABAMA • *We Can't Love Like This Anymore (RCA)*

### NEW RELEASES

ANDY CHILDS • *Don't Change Horses (RCA)*

CONFEDERATE RAILROAD • *Summer In Dixie (ATLANTIC)*

RICKY LYNN GREGG • *After The Fire Is Gone (LIBERTY)*

KATHY MATTEA • *Maybe She's Human (MERCURY)*

REBA MCENTIRE • *Til You Love Me (MCA)*

## Moderation Sets NAB Confab Tone

Musical Variety, Competition Could Spark New Growth

by Steve Wonsiewicz

Cautiously optimistic. That time-worn cliché accurately describes the attitude of country-radio programming and operations directors who attended the country "format fair" held during the NAB Radio show in Los Angeles Oct. 12-15.

The euphoria and upbeat attitude of previous sessions, when country was climbing to new ratings heights, has been replaced by a more reserved outlook. After years of unparalleled success, country broadcasters are now grappling with uncertainties concerning format fragmentation, slight audience declines, and growing competition within the musical genre itself for the first time.

One of the more restrained voices belonged to BP Consulting Group GM Jay Albright, whose column (see page 6) outlines several areas where the format could stumble in the months and years to come. However, in his keynote

state-of-the-format address, he said, "Now, don't misunderstand me. I still believe that country is going to have a great decade, due mainly to the incredible fragmentation and polarity within almost all other music formats."

It was that kind of give-and-take that pervaded discussions in the breakout groups during the NAB country session.

On the music side, Tony Thomas, PD at KMP5-AM-FM Seattle, said, "The contemporary country format is stable, but we must work to keep stability from being complacent."

"The diversity of musical styles that can be called 'country' is one of our format's key strengths." Citing artists such as Tim McGraw and the Tractors, Thomas called on programmers to discover the musical edges of the genre because, he said, "out on the edge is where the format is going to happen."

Consultant John Lund agreed that musically, the for-

*Continued on page 6*



**T**heir new album entered the country charts at #1.

**A**t the same time,  
its lead single was #1 across the board.

**T**he same week,  
they were named CMA Vocal Duo of the Year  
for the third straight year.

**A**nd it just keeps getting better.

# BROOKS & DUNN I'LL NEVER FORGIVE MY HEART

the next single from their new album,  
**WAITIN' ON SUNDOWN**  
ALREADY PLATINUM.

**GOING FOR ADDS:  
OCTOBER 31**

### THIS WEEK In Country Airplay Monitor

- 3** KMLE Overtakes KNIX In Phoenix
- 3** OmniAmerica Wages Columbus Ratings War
- 6** Country Profile: BP Consulting's Jay Albright

© 1994 Arista Records Inc.,  
a Bertelsmann Music Group Company

ARISTA  
NASHVILLE

This is why we do what we do.



"When I finished recording the album,  
I remember someone telling me that the fun  
was over and the real work was about to begin.

They were wrong...

Since June I've been on the road, visiting  
radio stations and making friends that will last  
throughout my career. It's been an exciting,  
challenging ride. And I want to thank each of  
you for your support, encouragement and of  
course— adding 'Eugene You Genius'!

The fun has really just begun..."

—BRYAN WHITE

bryan

WHITE

eugene you genius

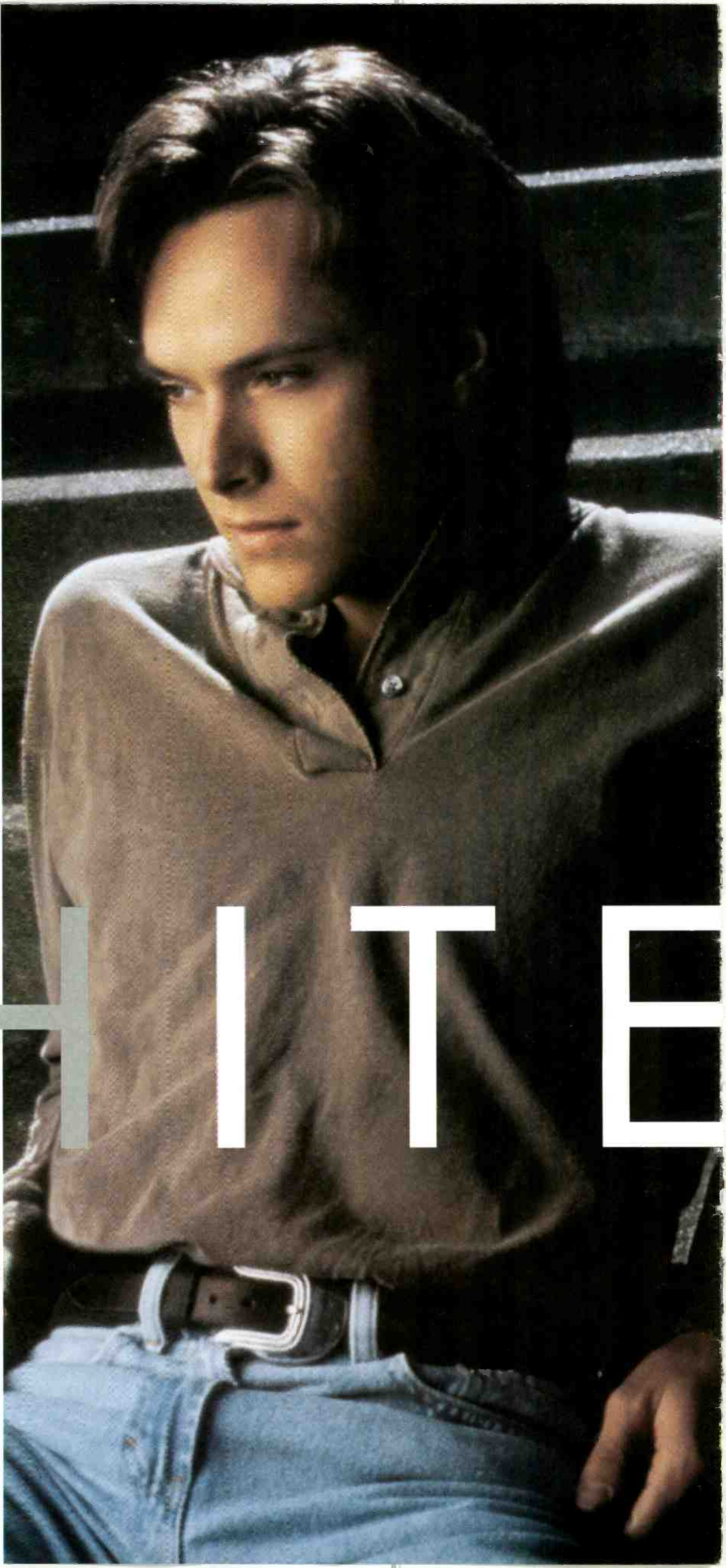
The first single and video from Bryan's  
self-titled debut album.

Produced by Billy Joe Walker, Jr. and Kyle Lehning  
Management: Marty Gamblin and Stan Schneider for GC Enterprises



Asylum '94...country today and tomorrow.  
On Asylum compact discs and **digital** cassettes.

©1994 Elektra Entertainment, a division of Warner Communications Inc. A Time Warner Company.





## KMLE Overtakes KNIX In Phoenix

### Format's Ratings Slip A Bit In Summer

The biggest surprise in the latest Arbitron ratings was the emergence of KMLE Phoenix as the No. 1 station in the market, overtaking perennial leader KNIX. KMLE turned in a 7.6 book during the summer survey, up from 7.2, while crosstown rival KNIX dropped 8.0-7.1.

The other surprise was in Dallas, where top 40 KHKS (6.1-6.0) grabbed the No. 1 slot from KSCS (6.5-5.9) despite slipping one-tenth of a point.

The biggest winner for the period was WCOL-FM Columbus, Ohio, which rose 1.4 points to an 8.6 share.

Country showed strong growth in Kansas City, Mo., where three of the five stations had ratings increases and total country listening was up.

Overall, of the 48 stations surveyed below, 19 had ratings increases, 24 saw declines, and five remained unchanged. Total share points for those stations eased by 1.2% (270.7-267.5).

| Market           | Station    | Sp '94 | Su '94 |
|------------------|------------|--------|--------|
| Dallas           | KSCS       | 6.5    | 5.9    |
|                  | KYNG       | 5.1    | 5.9    |
|                  | KPLX       | 5.1    | 4.1    |
| Houston          | KSSN       | 2.2    | 2.4    |
|                  | KILT-FM    | 6.2    | 7.0    |
|                  | KKBQ-AM/FM | 5.3    | 5.3    |
| Seattle          | KIKK-FM    | 4.7    | 4.2    |
|                  | KMPS-AM/FM | 8.6    | 7.9    |
|                  | KRPM       | 4.8    | 3.8    |
| Washington, D.C. | KYCW       | 2.7    | 1.6    |
|                  | WMZQ-AM/FM | 5.2    | 5.8    |
|                  | WKHX-FM    | 10.5   | 9.2    |
| Atlanta          | WYAY       | 4.8    | 3.7    |
|                  | KEEY       | 5.5    | 5.0    |
|                  | WBOB-FM    | 4.1    | 4.6    |
| Minneapolis      | KJJO-FM    | 3.5    | 3.5    |
|                  | WIL        | 8.8    | 9.1    |
|                  | WKXX       | 4.3    | 3.6    |

## OmniAmerica Challenges Nationwide's Ratings

At press time, the Arbitron Co. was not budging in a diary war being waged by OmniAmerica Communications in Columbus, Ohio, over what the broadcaster claims is alleged diary distortion by Nationwide Insurance.

OmniAmerica, which owns country duo WHOK-FM and WRVF-FM, claims that Nationwide, which owns crosstown rivals WCOL-FM and hot AC WNCI, benefited from some in-house promotion by the Columbus-based insurance giant. There are 18,000 employees at the company's headquarters.

WHOK/WRVF GM Mark Hanson is demanding a recall, claiming there is evidence of E-mail, memos, and other promotional pieces pitching the Nationwide stations. Arbitron says it is interested in examining any evidence, but that OmniAmerica hasn't produced it yet.

In the summer survey, WCOL jumped 6.2-8.6, while WHOK remained unchanged at 5.2 and WRVF slipped 3.3-3.1.

| Market                     | Station  | Sp '94 | Su '94 |
|----------------------------|----------|--------|--------|
| Baltimore                  | WPOC     | 7.5    | 8.3    |
|                            | KMLE     | 7.2    | 7.6    |
| Phoenix                    | KNIX     | 8.0    | 7.1    |
|                            | KYGO-FM  | 9.7    | 9.6    |
| Denver                     | KYGO-AM  | 1.9    | 2.6    |
|                            | KZDG     | 2.5    | 1.9    |
|                            |          |        |        |
| Tampa-St. Petersburg, Fla. | WQYK-FM  | 9.3    | 9.0    |
|                            | WRBQ-FM  | 6.1    | 6.4    |
| Portland, Ore.             | KWJJ     | 7.9    | 9.1    |
|                            | KUPL     | 7.8    | 7.6    |
| Milwaukee                  | WMIL     | 8.6    | 8.8    |
|                            | WDAF     | 9.8    | 10.0   |
| Kansas City, Mo.           | KFKF     | 8.3    | 8.7    |
|                            | KBEQ-FM  | 6.2    | 6.6    |
|                            | KKCJ     | 1.7    | 1.2    |
| San Jose, Calif.           | WHB/KMZU | 1.2    | 1.0    |
|                            | KRTY     | 3.9    | 3.0    |
|                            | KSAN     | 1.6    | 1.7    |
| Columbus, Ohio             | KYCY     | 1.2    | 1.2    |
|                            | WCOL-FM  | 6.2    | 8.6    |
|                            | WHOK     | 5.2    | 5.2    |
| Indianapolis               | WRVF     | 3.3    | 3.1    |
|                            | WCLT     | 2.7    | 2.5    |
|                            | WMNI     | 1.1    | 1.3    |
| Buffalo, N.Y.              | WFMS     | 14.0   | 13.7   |
|                            | WGRL     | 3.1    | 3.9    |
|                            | WYRK     | 11.5   | 9.2    |
| New Orleans                | WNUC     | 1.8    | 1.3    |
|                            | WNOE     | 9.0    | 9.0    |
| Hartford, Conn.            | WWYZ     | 7.2    | 5.7    |

## KRPM Seattle Launches 'Positive Country' Show

KRPM Seattle will launch a syndicated "positive country" show called "Honky Tonk Sundays" Nov. 6. Hosted by the station's morning drive personality, Ichabod, the program is set to debut on stations including WIL St. Louis, WBEE Rochester, N.Y., WBTU Fort Wayne, Ind., WDSB Dover, Del., WAVC Duluth, Minn., and KNFM Midland, Texas. So far, 50 stations have signed up for the one-hour

## Smokin' Success



WYNY New York staffers and Mercury Records Nashville duo John and Audrey Wiggins sample some of Cuba's finest while on a recent station tour. Shown, from left, are Mercury regional promoter Michael Powers, WYNY MD Theda Sandiford, John and Audrey Wiggins, and Mercury Records regional promoter T.K. Kimbrell.

## COUNTRY CONFIDENTIAL

by Lynn Shults

**S**ALES OF COUNTRY albums always go up following the CMA and ACM awards shows, and sales of specific artists' albums go up following network TV exposure. In the case of **Garth Brooks**, not only did his McDonald's premium album, with proceeds benefiting the Ronald McDonald Foundation, sell 4 million units, but the television campaign created a retail sales burst for his entire catalog. Following this year's CMA Awards show, sales of country singles and albums rose 19%. "Stones In The Road" by **Mary Chapin Carpenter** debuted at No. 1 on the Top Country Albums chart and No. 10 on The Billboard 200. There were 20 country titles among the top 100 albums on The Billboard 200. Eleven titles had bullets, meaning that sales were greater than the previous week.

THE COUNTRY FORMAT has kicked more than a little . . . during the past four years, while the pop world has been in some sort of fog. Everything from the pop radio formats to MTV and VH1 has appeared to be somewhat out of sync with middle America. And this has been to our advantage. The sleeping giant is awakening, however, slowly but surely. A story on the front page of the Oct. 22 issue of Billboard describes VH1's new strategy. Beginning Oct. 17, VH1 has redefined its target audience. The video outlet will now be targeting the 25-40-year-old demographic. It also will reverse its current/recurrent ratio, gradually moving to a 70% current/30% recurrent musical mix. Gone will be VH1's focus on the baby boomers. What does this mean to the country radio format? I'm not sure. But intuition tells me not to ignore this information. VH1 spent a lot of money on research before making this move.

## PEOPLE IN MOTION

**R**ADIO. WFMS/WGRL Indianapolis has made several staff changes. The combo has hired **Larry Leggett** as its new public affairs director, replacing **Paige Chandler**, who has been promoted to WGRL news director. **Mark Menser** has joined as account executive, and WGRL traffic director **Winnie Wilson** has been promoted to morning show producer.

Pittsburgh trombo WDSY-FM/WEEP-AM/WXRB-FM has hired **Doug Abernathy** as its new director of sales. He previously was local sales manager at WHFS-FM Washington, D.C.

Regent Communications has named **Kurt Mische** as VP/GM for recently purchased KFMS-AM-FM Las Vegas and its wholly owned crosstown station, KSNE-FM. He replaces former GM **Doug Stone**.

WYBZ Fort Walton Beach, Fla., has hired former WOW Omaha, Neb., AM personality **Don Glaze** as its new morning personality.

**MUSIC.** Nashville-based Leadership Music has named Great Cumberland Music Group VP of creative **Tabatha Eads** as its new executive director. She succeeds **Dale Franklin**, who retired for health reasons.

River North Records Nashville has hired former Capricorn regional promoter **Tammi Brumfield** as its new Southwest regional rep.

Curb Records Nashville has named former KSAN San Francisco assistant promotion director **Steve Lee** as its new Southwest regional rep.



## HANNAH'S GOT LEGS!

Off and Running At Stations All Over the Country

## JESSE HUNTER

"Long Legged Hannah (From Butte, Montana)"

Produced by Barry Beckett

From the Album "A Man Like Me" BNA 66220-2/4

**65 And Continuing To Climb!**

BNA

BMG

MUS ROBERT VIGORANI



# RADIOACTIVE

**C**ombined national spot sales and local radio revenue grew 13% in August, according to the Radio Advertising Bureau. National spot sales rose 15%, up from 12% in July, with every region of the country posting double-digit gains. Local ad sales were up a healthy 12%, compared to 8% in July. In the year to date, combined radio revenue is up 12%, based on 12% gains in local revenue and a 13% boost in national spot sales.

Shamrock Broadcasting is getting ready to make its first major change at KZDG Denver after buying the new country outlet last month from Premiere Radio Networks for \$1.3 million. PD Bob Young will soon replace the syndicated morning show "Gerry House And The House Foundation" with his own in-house

team. No date has been set for the change.

Speaking at the NAB Radio Show in Los Angeles Oct. 13, the FCC's Abbie Baynes said increasing the ownership limit from its current 20 AM/20 FM ceiling is "under active consideration" by the commission. However, Baynes stressed that relaxing local-market duopoly limits is definitely on hold.

Radio employees from the mid-Atlantic area (New York, New Jersey, and Pennsylvania) earn more money than their counterparts in eight other regions, according to a new NAB publication called Radio Station Salaries: 1994. GMs in the mid-Atlantic region, for example, average more than \$141,000 per year, compared to \$132,000 in the Pacific area. Here are some of the national averages for various positions: GM, \$103,889; GSM, \$68,797; PD, \$57,363; AM drive talent, \$82,102; afternoon drive, \$45,009; and promotion director, \$31,992.

# Daniel Named BNA Interim Chief RCA's Galante Makes First Moves

Incoming RCA Records Group Nashville chairman Joe Galante is already making his first changes, naming Tommy Daniel interim label manager at BNA Entertainment. He replaces VP/GM Ric Peppin, who left the label last week.

Daniel will oversee marketing and promotion, while sales will be handled by Ron Howie, formerly VP of sales at RCA and recently named VP of sales at RCA Records

Group Nashville. Daniel and BNA head of A&R Byron Hill will report directly to Galante.

According to a statement, Galante said, "I appreciate the tremendous dedication and effort Ric has put forth to develop BNA to its current level. We look forward to the continued growth of BNA's roster and share of the market with the naming of a new label head shortly."

# MCA Records Celebrates CMA Wins



MCA Records artists and executives gathered at the Hard Rock Cafe in Nashville following this year's CMA Awards show to celebrate this year's successes. Vince Gill, who hosted the show, was named entertainer of the year for the second time in a row, and male vocalist for an unprecedented fourth year in a row. Reba McEntire and Linda Davis won the prize for vocal event of the year for "Does He Love You." Shown, from left, are Gill's manager, Larry Fitzgerald; MCA Records Nashville VP of national promotion Scott Borchetta; MCA Records Nashville president Tony Brown; MCA Records Nashville chairman Bruce Hinton; MCA Music Entertainment Group chairman Al Teller; Gill; and MCA Music Entertainment COO Zach Horowitz.

# SUMMER '94 ARBITRONS

12-plus overall average quarter hour shares (#) indicates Arbitron market rank. Copyright 1994, Arbitron Ratings Co. May not be quoted or reproduced without the prior written permission of Arbitron

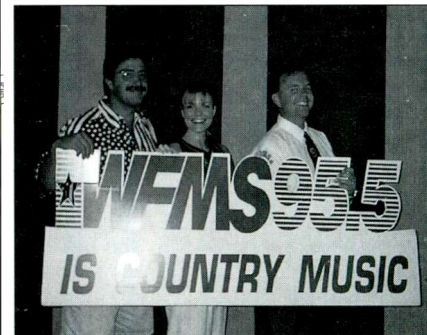
| Call                        | Format        | Su '93 | Fa '93 | W '94 | Sp '94 | Su '94 | Call                       | Format    | Su '93 | Fa '93 | W '94 | Sp '94 | Su '94 |  |  |  |  |  |  |  |
|-----------------------------|---------------|--------|--------|-------|--------|--------|----------------------------|-----------|--------|--------|-------|--------|--------|--|--|--|--|--|--|--|
| <b>WASHINGTON, D.C.—(8)</b> |               |        |        |       |        |        |                            |           |        |        |       |        |        |  |  |  |  |  |  |  |
| WPGC-FM                     | top 40/rhythm | 10.7   | 10.1   | 9.1   | 9.8    | 8.8    | WJFK-AM                    | N/T       | 1.6    | 1.0    | 1.5   | 2.0    | 1.9    |  |  |  |  |  |  |  |
| WMZQ-AM-FM                  | country       | 6.6    | 5.9    | 6.2   | 5.2    | 5.8    | WRQX                       | AC        | .8     | 1.3    | 1.4   | 1.0    | 1.4    |  |  |  |  |  |  |  |
| WRQX                        | AC            | 4.1    | 5.1    | 4.3   | 5.1    | 5.2    | WWDC-FM                    | album     | .7     | 1.1    | 1.3   | 1.3    | 1.4    |  |  |  |  |  |  |  |
| WHUR                        | R&B adult     | 3.9    | 4.5    | 4.7   | 4.5    | 4.7    | WHUR                       | R&B       | 1.1    | .8     | 1.0   | .9     | 1.1    |  |  |  |  |  |  |  |
| WMMJ                        | R&B adult     | 4.0    | 4.1    | 3.7   | 4.9    | 4.6    | WWLG                       | adult std | 1.1    | .8     | .6    | .5     | 1.1    |  |  |  |  |  |  |  |
| WASH                        | AC            | 3.1    | 2.4    | 3.7   | 3.4    | 4.4    | WWIN                       | religious | 1.2    | 1.1    | .6    | 1.1    | 1.0    |  |  |  |  |  |  |  |
| WJFK-FM                     | N/T           | 3.5    | 4.5    | 4.4   | 4.6    | 4.3    | <b>DENVER—(24)</b>         |           |        |        |       |        |        |  |  |  |  |  |  |  |
| WHFS                        | modern        | 2.7    | 3.7    | 3.7   | 3.3    | 4.1    | KYGO-FM                    | country   | 10.6   | 8.7    | 9.9   | 9.7    | 9.6    |  |  |  |  |  |  |  |
| WMAL                        | N/T           | 4.0    | 4.8    | 4.8   | 4.6    | 4.1    | KOA                        | N/T       | 9.4    | 8.7    | 7.3   | 8.8    | 9.5    |  |  |  |  |  |  |  |
| WKYS                        | R&B           | 4.9    | 4.4    | 4.0   | 4.1    | 4.0    | KRFX                       | cls rock  | 6.3    | 7.4    | 7.3   | 7.1    | 7.3    |  |  |  |  |  |  |  |
| WWDC-FM                     | album         | 3.3    | 3.1    | 2.6   | 3.5    | 3.8    | KOSI                       | AC        | 7.1    | 7.3    | 6.9   | 6.2    | 6.0    |  |  |  |  |  |  |  |
| WGAY                        | AC            | 3.7    | 4.4    | 5.2   | 3.8    | 3.7    | KBPI                       | album     | 1.8    | 1.9    | 2.1   | 4.6    | 5.3    |  |  |  |  |  |  |  |
| WBIG-FM                     | oldies        | 3.7    | 4.2    | 2.7   | 3.6    | 3.5    | KWMX-AM-FM                 | AC        | 3.4    | 3.9    | 5.5   | 4.6    | 5.0    |  |  |  |  |  |  |  |
| WGMS                        | classical     | 2.3    | 3.1    | 4.0   | 3.1    | 3.5    | KXKL-AM-FM                 | oldies    | 5.3    | 5.9    | 5.8   | 4.9    | 4.9    |  |  |  |  |  |  |  |
| WTOP                        | N/T           | 3.8    | 2.5    | 3.4   | 3.7    | 3.0    | KBCO-AM-FM                 | album     | 5.2    | 5.1    | 5.0   | 5.6    | 4.5    |  |  |  |  |  |  |  |
| WARW                        | oldies        | 2.0    | 2.2    | 2.0   | 2.5    | 2.2    | KQKS                       | top 40    | 4.7    | 4.2    | 5.1   | 4.9    | 3.9    |  |  |  |  |  |  |  |
| WOL                         | N/T           | 2.0    | 1.0    | 2.5   | 1.9    | 1.9    | KALC                       | AC        | 4.5    | 3.8    | 4.1   | 3.7    | 3.8    |  |  |  |  |  |  |  |
| WWRC                        | N/T           | 1.1    | 1.1    | 1.3   | 1.2    | 1.9    | KMJI                       | oldies    | 3.1    | 4.3    | 3.6   | 4.0    | 3.1    |  |  |  |  |  |  |  |
| WCXR                        | cls rock      | 2.5    | 1.9    | 1.9   | 1.6    | 1.7    | KHHH                       | adult alt | 2.8    | 2.6    | 3.7   | 4.1    | 2.9    |  |  |  |  |  |  |  |
| WXTR                        | oldies        | 2.5    | 2.2    | 2.0   | 1.3    | 1.5    | KEZW                       | adult std | 2.0    | 2.4    | 2.7   | 3.1    | 2.8    |  |  |  |  |  |  |  |
| WYCB                        | religious     | 1.7    | 1.4    | 1.1   | 1.2    | 1.4    | KVOD                       | classical | 2.8    | 2.5    | 3.0   | 2.8    | 2.5    |  |  |  |  |  |  |  |
| WAVA                        | religious     | 1.0    | .9     | 1.2   | 1.1    | 1.2    | KYGO-AM                    | country   | 2.1    | 1.9    | 2.8   | 1.9    | 2.5    |  |  |  |  |  |  |  |
| WFRE                        | country       | .9     | .5     | 1.0   | .8     | 1.2    | KHOW-AM                    | N/T       | .6     | 1.4    | 1.9   | 1.6    | 2.2    |  |  |  |  |  |  |  |
| WYYY                        | album         | .8     | 1.3    | .9    | 1.0    | 1.0    | KZDG                       | country   | 3.0    | 2.7    | 2.4   | 2.5    | 1.9    |  |  |  |  |  |  |  |
| WWDC                        | adult std     | 1.3    | 1.6    | .8    | 1.1    | 1.0    | KTLC                       | N/T       | 1.5    | 1.6    | 1.3   | 1.6    | 1.7    |  |  |  |  |  |  |  |
| <b>ST. LOUIS—(18)</b>       |               |        |        |       |        |        |                            |           |        |        |       |        |        |  |  |  |  |  |  |  |
| KMOX                        | N/T           | 17.2   | 13.0   | 16.5  | 14.7   | 14.9   | KTCL                       | modern    | 1.4    | 3.0    | 3.1   | 2.1    | 1.6    |  |  |  |  |  |  |  |
| WIL                         | country       | 8.7    | 11.0   | 8.7   | 8.8    | 9.1    | KYBG-AM                    | sports    | 1.5    | 2.0    | 1.6   | 1.7    | 1.1    |  |  |  |  |  |  |  |
| KSHE                        | album         | 7.0    | 7.8    | 6.5   | 6.7    | 7.9    | <b>COLUMBUS, OHIO—(34)</b> |           |        |        |       |        |        |  |  |  |  |  |  |  |
| KMJM                        | R&B           | 7.2    | 6.9    | 7.4   | 7.6    | 7.8    | WTVN                       | AC        | 8.3    | 8.6    | 9.2   | 8.0    | 9.5    |  |  |  |  |  |  |  |
| KEZK                        | AC            | 8.1    | 6.8    | 7.0   | 6.9    | 6.5    | WCOL-FM                    | country   | 2.9    | 4.0    | 4.9   | 6.2    | 8.6    |  |  |  |  |  |  |  |
| KIHT                        | oldies        | 1.3    | 2.3    | 1.1   | 3.7    | 5.6    | WSNY                       | AC        | 7.9    | 8.7    | 8.7   | 7.8    | 7.9    |  |  |  |  |  |  |  |
| KYKY                        | AC            | 4.6    | 5.1    | 6.4   | 5.3    | 5.2    | WNCI                       | top 40    | 7.6    | 5.8    | 7.4   | 8.5    | 7.3    |  |  |  |  |  |  |  |
| KSD-FM                      | cls rock      | 4.5    | 4.7    | 4.3   | 4.3    | 3.6    | WBZ                        | album     | 5.2    | 5.7    | 5.8   | 7.8    | 7.1    |  |  |  |  |  |  |  |
| WKXX                        | country       | 2.2    | 3.0    | 3.3   | 4.3    | 3.6    | WLWQ                       | album     | 6.8    | 6.7    | 7.6   | 6.1    | 5.9    |  |  |  |  |  |  |  |
| WBQ-AM-FM                   | top 40        | 4.1    | 4.6    | 4.4   | 4.6    | 3.4    | WHOK                       | country   | 5.9    | 7.0    | 4.8   | 5.2    | 5.2    |  |  |  |  |  |  |  |
| KLOU                        | oldies        | 3.5    | 3.5    | 2.9   | 3.6    | 3.2    | WBNS-FM                    | oldies    | 3.4    | 2.3    | 3.0   | 4.2    | 4.8    |  |  |  |  |  |  |  |
| WRTH                        | adult std     | 2.8    | 2.7    | 2.5   | 2.7    | 3.2    | WCXK                       | R&B       | 3.5    | 2.8    | 5.7   | 4.7    | 3.9    |  |  |  |  |  |  |  |
| KPNT                        | modern        | 3.1    | 2.3    | 2.1   | 2.9    | 2.5    | WVVO                       | R&B adult | 2.5    | 3.2    | 3.9   | 3.0    | 3.6    |  |  |  |  |  |  |  |
| KXOK                        | R&B adult     | 2.3    | 2.1    | 1.8   | 2.0    | 2.1    | WRVF                       | country   | 5.1    | 7.0    | 4.3   | 3.3    | 3.1    |  |  |  |  |  |  |  |
| KFUO-FM                     | classical     | 3.2    | 2.4    | 2.8   | 2.2    | 1.9    | WCLT-FM                    | country   | 5.1    | 4.1    | 2.5   | 2.7    | 2.5    |  |  |  |  |  |  |  |
| KATZ-AM                     | R&B adult     | 1.2    | 2.2    | 1.4   | 1.2    | 1.5    | WWCD                       | album     | 2.7    | 2.2    | 2.6   | 2.9    | 2.5    |  |  |  |  |  |  |  |
| KNJZ                        | adult alt     | .8     | .7     | .9    | 1.2    | 1.4    | WAKS                       | oldies    | 1.8    | 2.5    | 2.4   | 1.1    | 2.3    |  |  |  |  |  |  |  |
| WCBW                        | religious     | 1.0    | 1.2    | 1.0   | 1.2    | 1.3    | WCEZ                       | easy      | 1.2    | 1.3    | 1.7   | 2.0    | 2.3    |  |  |  |  |  |  |  |
| WFBW                        | album         | 1.2    | 1.4    | 1.8   | 1.9    | 1.3    | WBNS-AM                    | sports    | 3.2    | 3.8    | 2.4   | 1.8    | 2.2    |  |  |  |  |  |  |  |
| WIBV                        | N/T           | 2.2    | 1.7    | 1.7   | 1.5    | 1.3    | WCOL-AM                    | N/T       | 3.2    | 3.1    | 1.6   | 1.7    | 1.6    |  |  |  |  |  |  |  |
| KFNS                        | N/T           | .8     | .6     | .5    | .5     | 1.1    | WMNI                       | country   | 1.9    | 1.9    | 1.9   | 1.1    | 1.3    |  |  |  |  |  |  |  |
| WEW                         | N/T           | 1.2    | 1.4    | 1.9   | 1.0    | 1.0    | WAHC                       | top 40    | .7     | 1.7    | .5    | 1.8    | 1.1    |  |  |  |  |  |  |  |
| <b>BALTIMORE—(19)</b>       |               |        |        |       |        |        |                            |           |        |        |       |        |        |  |  |  |  |  |  |  |
| WPOC                        | country       | 8.9    | 9.9    | 7.7   | 7.5    | 8.3    | WLW                        | AC        | 1.3    | 1.0    | 1.5   | 1.5    | 1.1    |  |  |  |  |  |  |  |
| WBAL                        | N/T           | 10.8   | 8.6    | 8.5   | 8.8    | 8.0    | <b>BUFFALO, N.Y.—(40)</b>  |           |        |        |       |        |        |  |  |  |  |  |  |  |
| WYYY                        | album         | 4.5    | 5.5    | 5.2   | 4.4    | 6.2    | WYRK                       | country   | 9.7    | 9.7    | 11.0  | 11.5   | 9.2    |  |  |  |  |  |  |  |
| WWMX                        | AC            | 3.7    | 4.8    | 6.7   | 5.3    | 6.2    | WBEN                       | N/T       | 10.0   | 9.9    | 9.7   | 7.6    | 8.9    |  |  |  |  |  |  |  |
| WQSR                        | oldies        | 5.3    | 5.7    | 6.4   | 5.9    | 5.3    | WKSE                       | top 40    | 5.8    | 6.5    | 5.9   | 7.9    | 8.0    |  |  |  |  |  |  |  |
| WERQ-FM                     | top 40/rhythm | 4.6    | 4.5    | 5.4   | 6.0    | 4.8    | WJYE                       | AC        | 8.1    | 8.2    | 9.2   | 7.6    | 7.4    |  |  |  |  |  |  |  |
| WXVY                        | R&B           | 6.0    | 5.8    | 6.1   | 6.7    | 4.8    | WHIT-FM                    | oldies    | 7.1    | 7.0    | 6.6   | 6.1    | 7.2    |  |  |  |  |  |  |  |
| WLIF                        | AC            | 5.7    | 4.2    | 6.9   | 5.2    | 4.4    | WBLK                       | R&B       | 6.7    | 7.1    | 5.1   | 7.0    | 6.6    |  |  |  |  |  |  |  |
| WHFS                        | modern        | 3.0    | 3.2    | 3.3   | 3.9    | 4.3    | WGRF                       | cls rock  | 6.5    | 5.8    | 4.7   | 7.3    | 6.5    |  |  |  |  |  |  |  |
| WSSF                        | AC            | 2.3    | 3.0    | 3.5   | 3.5    | 3.8    | WUFU                       | album     | 5.7    | 4.8    | 5.4   | 6.2    | 6.2    |  |  |  |  |  |  |  |
| WWIN-FM                     | R&B adult     | 3.6    | 3.7    | 3.6   | 2.9    | 3.5    | WECK                       | adult std | 3.6    | 4.2    | 3.8   | 4.6    | 5.7    |  |  |  |  |  |  |  |
| WCBM                        | N/T           | 3.4    | 4.4    | 3.0   | 3.1    | 2.9    | WGR                        | N/T       | 7.2    | 7.3    | 7.7   | 6.1    | 5.5    |  |  |  |  |  |  |  |
| WCAO                        | religious     | 2.3    | 2.5    | 2.2   | 3.0    | 2.7    | WMJQ                       | AC        | 5.0    | 5.2    | 4.8   | 4.4    | 5.4    |  |  |  |  |  |  |  |
| WRBS                        | religious     | 1.9    | 1.5    | 1.3   | 1.5    | 2.1    | WBUF                       | AC        | 3.8    | 3.1    | 3.6   | 2.8    | 3.4    |  |  |  |  |  |  |  |
| WGRX                        | cls rock      | 2.4    | 2.6    | 2.7   | 1.9    | 2.0    | CFNY                       | modern    | 1.5    | 1.3    | 2.1   | 1.6    | 2.0    |  |  |  |  |  |  |  |
| WPGC-FM                     | R&B           | 1.9    | 1.7    | 1.8   | 2.2    | 2.0    | WNUC                       | country   | 2.4    | 1.8    | 1.7   | 1.8    | 1.3    |  |  |  |  |  |  |  |
|                             |               |        |        |       |        |        | WWKB                       | N/T       | 2.2    | 3.0    | 1.7   | 2.1    | 1.3    |  |  |  |  |  |  |  |

# Just As Sweet As The First



KNIX Phoenix VP/GM Michael Owens proudly shows off his CMA Award for large-market radio station of the year. It's the fourth time KNIX has won the award.

# Support Your Local Talent



WFMS Indianapolis morning team Jim Brooks and Charlie Dunn do their best to promote local talent. Shown, from left, are Brooks, local country performer and BNA Records Nashville artist Lisa Stewart, and Dunn.

# How 'Bout Them ... War Eagles?



WIVK Knoxville, Tenn., PD Les Acree, known for his insomnia, has finally found the cure. No longer a dyed-in-the-wool University of Tennessee Vols fans, he slumbers peacefully now that he has switched loyalties to Auburn University. Just kiddin', Les.



# Meet The Songwriters, Studio Musicians and Producers Behind the Little Texas Sound



*That's right. The members of Little Texas write the songs, play the music and co-produce the records. The results speak for themselves.*

- Biggest selling country album by a group in 1994 (BIG TIME).
  - Platinum certification for BIG TIME.
  - Gold certification for FIRST TIME FOR EVERYTHING.
- Vocal Group of the Year, 1994 Academy of Country Music.
  - More 1994 CMA nominations than any other group.
- Of the 25 top-selling country singles of 1994, three belong to LITTLE TEXAS.
- Only group to reach #1 on Billboard and R&R 1994 Country Singles Charts.
  - First group ever chosen for CMT's Artist of the Month.



HEARING IS BELIEVING  
© 1994 WARNER BROS. RECORDS INC.

Sources: Soundscan, R&R, Billboard Monitor, RIAA

*SW*  
BIG TIME  
ENTERTAINMENT



## COUNTRY PROFILE

### The State Of Country BP's Albright Outlines '90s Do's, Dont's

*Editor's note: This article, written by Jay Albright, was drawn from remarks he prepared for the "State Of The Format" session at the NAB Radio Show in Los Angeles Oct. 12-15.*

**F**or two years now, the country format has rolled along, getting bigger and bigger and attracting more radio stations, more rating points, more ad dollars, more of everything. At our BP Advertising Group client seminar last spring in Nashville, Pierre Bouvard of Coleman Research called country "the top 40 format for the rest of the decade." With all this success, and the apparent vitality of the music and the business it propels, you'd think I'd be deliriously happy all the time. But remember, I'm a consultant ... a guy who is paid to worry, and I'm troubled by what I see ahead. Here are some reasons:

#### CAREER TRANSITIONS

The two hottest country personalities of only two years ago now face dangerous levels of overexposure. In many markets, four out



**Jay Albright**  
General Manager  
BP Consulting Group

*If we continue to make judicious choices, it will be possible for a country station to continue to dominate literally any market in North America.*

of 10 country listeners say they'll change stations if Billy Ray Cyrus' "Achy Breaky Heart" comes on. Fewer songs from the "Big Seven" country stars are showing as favorites in music research and are achieving high chart positions. These artists are being replaced by songs from newer artists and often by the likes of Johnny Paycheck and Patsy Cline, who sound new to many new-country listeners.

I haven't forgotten that artist evolution has kept our format vital and growing for the past half-century. But I also remember that every time we have experienced such potential turnover in the artist base, country ratings have dipped and contemporary stations have returned to center stage.

#### NO MORE "HIT PARADE"

For those people who have been waiting for country to become an album format, I have news: We've been there for some time. There is no such thing as a "single" release at retail anymore, except in very rare instances. So, record sales—once the ultimate determining factor of hit status—no longer identify which of the many songs on the albums our listeners want to hear repeatedly on the radio.

#### CONCERT CONNECTION COMING UNDONE

Due to incredible retail success based on airplay for just two or three hits, budding artists like Faith Hill, Clay Walker, and John Michael Montgomery, who once would have been booked all over the continent at rural fairs and attractions, are now pricing themselves out of these concert venues where families could build a relationship with them. In

many places, they've been replaced by '70s acts. Station listener-appreciation shows face the same problem: Some canceled or paid slightly bigger bucks to get a Wynonna, Alabama, or Tanya Tucker.

#### SLIPPING LISTENER LOYALTY

In many markets, country radio ratings plateaued a year ago. Direct country competition is intensifying. Listeners actually seem to appreciate having a choice of three or four stations. Meanwhile, station marketing is starting to look identical, as we all try to be "today's hot new country." Is there a country station anywhere in the civilized world that didn't use "The Thunder Rolls" video in its TV spot last spring, and "Standing Outside The Fire" this year? Aren't we telling listeners we play exactly the same songs? And yet, who would be crazy enough not to center their advertising efforts on Garth? One thing is certain: To stand out right now, our on-air and marketing creativity must become audibly and visibly better and be based on the potential listener's reality.

#### WHAT DO WE CALL OURSELVES?

In the last six months, we have moved from "Young Country" and "Today's Hot New Country" toward even more radical expressions. Two of the most ill-advised: "Wild Country" and "Rockin' Country." If we start calling our music by names that don't check with audience perceptions of what we are, how will they perceive us? Country can still be the mass-appeal winner everywhere, but now that multistation competition is the norm, doing it right is more important than ever.

#### WHAT TO DO?

Real loyalty is based on brand preference and perceived uniqueness. This can only be sustained by projecting a truly unique station character, exemplifying cultural and ethical values that are absolutely in sync with the target audience, and reinforced by one-of-a-kind product features and obvious, demonstrable quality.

We, who sample the tastes of country radio consumers on a regular basis, now hear complaints about increasing repetition, heavier commercial loads (now that listeners have more choices, it matters much more), lack of familiarity, and a growing attitude that "all the music and the stations are basically the same."

This is where the right mix of music, personality, and attitude begin to separate competitors in key ways. Loyal core listeners love new country, traditional music, and country oldies. In general, they account for about a third of our audience and have a mean age of around 40. Recent country converts are primarily 20-39 and like only new country and rockabilly. They make up our 18-34 growth for the last two years and have added 35% to our national cume. Transition listeners in their 30s use country along with three or four other formats. They are almost half our cume, and are our small-market users, and because of their lighter use of country radio, they're slower to become familiar with new things and to burn out on older recurrences.

I think it is very possible to satisfy all of them if we are careful and selective. Much depends on our ability to do so. If we continue to make judicious choices, it will be possible for a country station to continue to dominate literally any market in North America.

*Continued in next column this page*

## ON THE ROW

**A**t press time, nominees were being selected for the first annual Nashville Music Awards—the Nammies—scheduled for Jan. 18 at the Ryman Auditorium. Nominees will be named for artists, albums, videos, and musicians in more than 30 categories, including country, jazz, blues, urban, pop, rock, folk, R&B, bluegrass, and contemporary Christian. The Nammies were created by Leadership Music, the Nashville-based music-business education group, to recognize the city's music.

Hal Ketchum will perform at the annual Gene Autry Western Heritage Museum's 1994 benefit, to be held Oct. 25 in Los Angeles. It's the museum's sixth anniversary. Special honoree this year is Clayton Moore, the original Lone Ranger.

Acting updates: Dwight Yoakam will appear as a rodeo clown accused of murder in "Half A Dog's Life," a film from Cabin Fever/Soundshore slated for a spring 1995 release. Also, Travis Tritt will appear on HBO's "Tales From The Crypt." Kathy Mattea will appear on a celebrity episode of the TV game show "Jeopardy" Nov. 7, along with Gen. Norman Schwarzkopf, actress Mary Steenburgen, talk-show host Larry King, and actor Jason Alexander. Proceeds will go to the American Foundation for AIDS Research.

## Moderation Sets NAB Confab Tone

*Continued from page 1*

mat is "at a crossroads. It can either remain current-based, as heard on most stations today, or it can reinvent new format options to garner greater listening and cume."

He added, however, that country will enjoy increased growth because fragmentation will ultimately result in increased market share. "There is a 'phantom cume' of people who like country music, but for one reason or another, can't find their niche on radio," said Lund. Format offshoots that Lund predicted would be popular in the future include oldies-based classic country, personality country, and album-based country.

Dene Hallam, PD at KKBQ-AM-FM Houston, stressed that stations should continue to play album cuts to create more musical diversity, while airing the most popular songs in a high rotation to build familiarity. Echoing Albright's and Lund's views, Hallam said, "The pool of records to play from is albums, not singles."

Larry Pareigis, OM at KNCI/KRAK Sacramento, Calif., said he believed that with increased competition, music is now in a pre-emptive position, and

that the "fun element" will drive ratings growth in the future. As country audiences have become more sophisti-

*"Country is at a crossroads. It can either remain current-based, as heard on most stations today, or it can reinvent new format options to garner greater listening and cume."*

—John Lund

cated, in keeping with the format's expansion and self-reinvention since the '70s and early '80s, Pareigis said, "people's selective attention has now drifted over to country; people are more choosy about what they want to hear. That's something we haven't had to deal with in the past."

Thomas, who also stressed that point, said stations will succeed by presenting their programs with more energy and professionalism. "The newer country groups, who want more entertainment, are a far larger target" for the format.

Lee Logan, PD at KSAN San Francisco, who is in a three-way battle for listeners in his market, predicted competition will increase. Other stations will migrate toward the format, because "being a third country station might start looking better than remaining a lower-rated rock'n'roll station." He said that stations will have to start picking and choosing their own battles: "Defend what you're known for; you can't defend all positions."

## The State Of Country

*Continued from Country Profile*

If we don't, we'll be making room for a more broad-based top 40 and AC to re-emerge and dominate the pop culture.

#### LOOKING AHEAD

Now, don't misunderstand me. I still believe that country is going to have a great decade, due mainly to the incredible fragmentation and polarity within almost all other music formats, from grunge to opera.

If current trends continue, I believe we'll see at least three different country approaches, all "tied" for top five, 25-54, trying to sell against each other based on demographics and psychographics, as AC and top 40 stations now do. The choices we make now will determine whether the rest of this decade will be only good or incredible.

PUBLISHER: MICHAEL ELLIS  
DIRECTOR OF CHARTS: LYNN SHULTS  
MANAGING EDITOR: STEVE WONSIEWICZ  
CHART PRODUCTION MANAGER: MICHAEL CUSSON  
ASST. CHART PRODUCTION MANAGER: PAUL PAGE  
EDITORIAL PRODUCTION MANAGER: BARRY BISHIN  
ASST. EDITORIAL PRODUCTION MANAGER: MARCIA REPINSKI  
EDITORIAL PRODUCTION: MARC GIAQUINTO, MORRIS KLEGMAN,  
ANTHONY T. STALLINGS  
ADVERTISING PRODUCTION MANAGER: LEN DURHAM  
ADVERTISING ART DIRECTOR: RAY CARLSON  
CIRCULATION MANAGER: JEANNE JAMIN

NATIONAL ADVERTISING MANAGER: JON GUYNN  
ADVERTISING SALES: LEE ANN PHOTOGLIO  
ADVERTISING SERVICES MGR.: MICHELE JACANGELO  
SALES ASSISTANT: MARY DECROCE  
PROMOTION DIRECTOR: ELISSA TOMASETTI

EDITORIAL ADVISER: TIMOTHY WHITE  
PRODUCTION DIRECTOR: MARIE GOMBERT  
DIRECTOR OF RESEARCH: JANE RANZMAN

BILLBOARD MUSIC GROUP  
PRESIDENT: HOWARD LANDER

©1994 BPI Communications, 49 Music Square W., Nashville, TN 37203  
615-321-4290 fax: 615-320-0454  
For subscriptions call: 800-722-2346



# Monitor **BIGGEST GAINERS**

## Strongest Increase In Airplay This Week

INCREASE  
IN PLAYS

|  |             |
|--|-------------|
| <b>JOE DIFFIE • Pickup Man (EPIC)</b>  | <b>+821</b> |
| WQBE +17, KIIM +17, KKAT +17, WUSN +17, KRYS +16, KUPL +16, WXBQ +15, KZSN +15, WGGY +14, KWNR +14 |             |
| <b>VINCE GILL • When Love Finds You (MCA)</b>  | <b>+572</b> |
| WNOE +20, WWWW +19, WGGY +15, WDRM +15, WQIK +14, WWKA +14, WKCO +13, KIIM +13, WHKO +13, WKIS +13 |             |
| <b>GEORGE STRAIT • The Big One (MCA)</b>   | <b>+536</b> |
| WKSJ +19, WHYL +16, KOUL +15, WUSY +15, WHKO +14, WVLC +13, WNOE +13, KCYY +13, KILT +13, WKCO +12 |             |
| <b>SAMMY KERSHAW • Third Rate Romance (MERCURY)</b>  | <b>+529</b> |
| KNCI +18, KNAX +16, WDOD +16, WSM +16, WDAF +15, KDRK +14, WHKO +14, KRMD +12, KVOO +12, KSSN +11  |             |
| <b>RANDY TRAVIS • This Is Me (WARNER BROS.)</b>  | <b>+488</b> |
| WPOC +21, KOUL +17, KRKY +15, WKXK +15, KPLX +13, KYNG +12, WGKX +12, WGEE +11, WGH +11, WBCT +10  |             |
| <b>FAITH HILL • Take Me As I Am (WARNER BROS.)</b>   | <b>+410</b> |
| KAJA +18, KNCI +17, WXTU +17, WCFB +15, WCKT +11, WOKO +11, WCOS +11, WYRK +11, WKJN +10, WQIK +10 |             |
| <b>MARK CHESNUTT • Goin' Through The Big D (DECCA)</b>   | <b>+404</b> |
| WAMZ +23, KRYS +19, WCOL +17, KOUL +17, WSM +15, KWJJ +14, WIVK +11, KYNG +10, WKJN +10, WXBQ +9   |             |
| <b>NEAL MCCOY • The City Put The Country Back In Me (ATLANTIC)</b>                                 | <b>+400</b> |
| WYNY +28, KRST +22, WGGY +18, WSM +18, KZSN +16, KKCS +15, WROO +15, KDRK +14, WGH +14, WKXC +13   |             |
| <b>MARY CHAPIN CARPENTER • Shut Up And Kiss Me (COLUMBIA)</b>                                      | <b>+382</b> |
| WNOE +17, KPLX +17, KNCI +16, WDAF +15, WRBQ +14, WDOD +13, WDSY +13, WUSN +13, KTOM +12, KFKF +12 |             |
| <b>ALAN JACKSON • Livin' On Love (ARISTA)</b>  | <b>+366</b> |
| KTOM +15, WHKO +15, WUSY +13, WUSN +13, KIIM +12, WQIK +12, KAJA +12, KRYS +11, WKXC +11, KFDI +11 |             |
| <b>DIAMOND RIO • Night Is Fallin' In My Heart (ARISTA)</b>   | <b>+359</b> |
| KRKY +19, WCFB +17, WDOD +15, KDRK +14, KKCS +13, WRKZ +12, WCUZ +12, WSM +12, KSOP +12, WMZQ +12  |             |
| <b>THE MAVERICKS • There Goes My Heart (MCA)</b>   | <b>+348</b> |
| KYNG +25, WTQR +16, KDRK +14, KEEY +12, WCKT +11, WESC +11, WCOL +10, KWJJ +10, WCFB +9, WYYD +9   |             |
| <b>TANYA TUCKER • You Just Watch Me (LIBERTY)</b>  | <b>+334</b> |
| WQBE +17, KCYY +17, KEEY +15, WXBQ +14, KIKK +13, WMSI +12, WBEE +12, KKCS +11, KYGO +11, WTQR +10 |             |
| <b>CLAY WALKER • If I Could Make A Living (GIANT)</b>  | <b>+308</b> |
| WKSJ +12, WHYL +12, WIVK +12, WKJN +12, KMLE +12, WRBQ +12, WZZK +10, KSOP +10, WCKT +9, WAMZ +9   |             |
| <b>JOHN MICHAEL MONTGOMERY • If You've Got Love (ATLANTIC)</b>                                     | <b>+300</b> |
| WCHY +23, WYYZ +12, KTTS +11, WUSY +10, WIVK +10, WKJN +10, WYNK +10, WSIX +10, KNIX +10, KOUL +9  |             |
| <b>TRACY LAWRENCE • I See It Now (ATLANTIC)</b>  | <b>+298</b> |
| WDAF +15, WAMZ +14, KKQB +14, WYNY +14, KTOM +13, WKSJ +13, WCFB +12, KRPM +12, KYNG +10, WKIS +10 |             |
| <b>TIM MCGRAW • Not A Moment Too Soon (CURB)</b>   | <b>+293</b> |
| KWJJ +18, WTQR +15, WIVK +13, KRMD +10, WEZL +9, WSTH +8, WLWI +8, KASE +8, WCKT +7, WAMZ +7       |             |
| <b>BILLY RAY CYRUS • Storm In The Heartland (MERCURY)</b>  | <b>+285</b> |
| WPOC +23, KTTS +18, WUSN +17, WHYL +13, KRKY +13, KDRK +12, WXTU +12, KOUL +11, WLWI +10, WBEE +10 |             |
| <b>PAM TILLIS • When You Walk In The Room (ARISTA)</b>   | <b>+273</b> |
| WGGY +16, WTQR +15, WYNY +15, WSOC +14, WGH +13, KTTS +12, WZZK +12, WXTU +11, KIKK +11, WPCM +10  |             |
| <b>KEN MELLONS • Jukebox Junkie (EPIC)</b>   | <b>+269</b> |
| KIKK +20, WAMZ +15, WCUZ +12, WQXK +11, WCKT +11, KCYY +10, WKHX +10, KSSN +9, KFKF +9, WSM +9     |             |

## MOST NEW AIRPLAY THIS WEEK

No. Of  
Stations

|  |           |
|--|-----------|
| <b>JOE DIFFIE</b><br><i>Pickup Man (Epic)</i>                      | <b>57</b> |
| <b>RANDY TRAVIS</b><br><i>This Is Me (Warner Bros.)</i>            | <b>34</b> |
| <b>MARK CHESNUTT</b><br><i>Goin' Through The Big D (Decca)</i>     | <b>32</b> |
| <b>DIAMOND RIO</b><br><i>Night Is Fallin' In My Heart (Arista)</i> | <b>31</b> |
| <b>BILLY RAY CYRUS</b><br><i>Storm In The Heartland (Mercury)</i>  | <b>28</b> |
| <b>RICK TREVINO</b><br><i>Doctor Time (Columbia)</i>               | <b>24</b> |
| <b>VINCE GILL</b><br><i>When Love Finds You (MCA)</i>              | <b>20</b> |
| <b>JOHN BERRY</b><br><i>You And Only You (Liberty)</i>             | <b>20</b> |
| <b>MARTINA MCBRIDE</b><br><i>Heart Trouble (RCA)</i>               | <b>19</b> |
| <b>TIM MCGRAW</b><br><i>Not A Moment Too Soon (Curb)</i>           | <b>17</b> |

## VIDEO PLAYLISTS

### CMT

|   | TW | LW |
|---|----|----|
| 1 Joe Diffie, Pickup Man                    | 37 | 12 |
| 2 Patty Loveless, I Try To Think About Elv  | 34 | 31 |
| 3 Sammy Kershaw, Third Rate Romance         | 33 | 31 |
| 4 Brooks & Dunn, She's Not The Cheatin' Ki  | 32 | 28 |
| 5 Garth Brooks, Callin' Baton Rouge         | 30 | 29 |
| 6 Mark Chesnutt, She Dreams                 | 29 | 29 |
| 7 Alan Jackson, Livin' On Love              | 29 | 33 |
| 8 Kathy Mattea, Nobody's Gonna Rain On Our  | 28 | 29 |
| 9 Confederate Railroad, Elvis And Andy      | 28 | 29 |
| 10 Tim McGraw, Not A Moment Too Soon        | 28 | 10 |
| 11 Toby Keith, Who's That Man               | 28 | 28 |
| 12 Pam Tillis, When You Walk In The Room    | 28 | 29 |
| 13 Tracy Byrd, Watermelon Crawl             | 28 | 28 |
| 14 Blackhawk, I Sure Can Smell The Rain     | 28 | 19 |
| 15 Little Texas, Kick A Little              | 28 | 22 |
| 16 Mary Chapin Carpenter, Shut Up And Kiss  | 27 | 22 |
| 17 Clay Walker, If I Could Make A Living    | 22 | 22 |
| 18 John Berry, You And Only You             | 22 | 27 |
| 19 Gibson/Miller Band, Red, White And Blue  | 21 | 22 |
| 20 Jesse Hunter, Long Legged Hannah         | 21 | 20 |
| 21 Vince Gill, When Love Finds You          | 21 | 22 |
| 22 Randy Travis, This Is Me                 | 21 | 6  |
| 23 The Mavericks, There Goes My Heart       | 20 | 22 |
| 24 Joy Lynn White, Bad Loser                | 20 | 21 |
| 25 Aaron Tippin, I Got It Honest            | 19 | 22 |
| 26 Billy Dean, Men Will Be Boys             | 17 | 18 |
| 27 Ken Mellons, Jukebox Junkie              | 17 | 16 |
| 28 Neal McCoy, The City Put The Country Bac | 17 | 14 |
| 29 Travis Tritt, Ten Feet Tall And Bulletpr | 17 | 16 |
| 30 Mark Collie, Hard Lovin' Woman           | 17 | 17 |
| 31 Tracy Lawrence, I See It Now             | 17 | 17 |
| 32 Bryan White, Eugene You Genius           | 17 | 15 |
| 33 Dan Seals, Love Thing                    | 17 | 19 |
| 34 Doug Stone, Little Houses                | 17 | 4  |
| 35 Archer/Park, Where There's Smoke         | 16 | 16 |
| 36 George Ducas, Teardrops                  | 16 | 15 |

|   |    |    |
|---|----|----|
| 37 Ricky Van Shelton, Wherever She Is       | 16 | 16 |
| 38 Marty Stuart, That's What Love's About   | 16 | 21 |
| 39 Clint Black, Untanglin' My Mind          | 16 | 20 |
| 40 Rick Trevino, Doctor Time                | 16 | 16 |
| 41 The Tractors, Baby Likes To Rock It      | 15 | 16 |
| 42 Sawyer Brown, Hard To Say                | 15 | 34 |
| 43 John & Audrey Wiggins, Has Anybody Seen  | 15 | 15 |
| 44 Jeff Foxworthy, Redneck Stomp            | 15 | 16 |
| 45 Lari White, Now I Know                   | 15 | 18 |
| 46 David Ball, When The Thought Of You Catc | 15 | 16 |
| 47 Faith Hill, Take Me As I Am              | 15 | 17 |
| 48 Terry McBride & The Ride, High Hopes And | 15 | 16 |
| 49 Rhett Akins, What They're Talking About  | 15 | 15 |
| 50 Marty Brown, You Must Be Mistakin' Me    | 15 | 14 |

### TNN

|   | TW | LW |
|---|----|----|
| 1 Garth Brooks, Callin' Baton Rouge         | 7  | 6  |
| 2 Patty Loveless, I Try To Think About Elv  | 7  | 6  |
| 3 Alan Jackson, Livin' On Love              | 7  | 6  |
| 4 Mary Chapin Carpenter, Shut Up And Kiss   | 7  | 4  |
| 5 Mark Chesnutt, She Dreams                 | 6  | 6  |
| 6 Kathy Mattea, Nobody's Gonna Rain On Our  | 6  | 6  |
| 7 Confederate Railroad, Elvis And Andy      | 6  | 6  |
| 8 Sammy Kershaw, Third Rate Romance         | 6  | 6  |
| 9 Pam Tillis, When You Walk In The Room     | 6  | 6  |
| 10 Little Texas, Kick A Little              | 6  | 5  |
| 11 Brooks & Dunn, She's Not The Cheatin' Ki | 6  | 6  |
| 12 Marty Stuart, That's What Love's About   | 6  | 3  |
| 13 Travis Tritt, Ten Feet Tall And Bulletpr | 6  | 6  |
| 14 The Tractors, Baby Likes To Rock It      | 5  | 3  |
| 15 Tim McGraw, Down On The Farm             | 5  | 7  |
| 16 Neal McCoy, The City Put The Country Bac | 5  | 6  |
| 17 Tracy Byrd, Watermelon Crawl             | 5  | 5  |
| 18 Faith Hill, Take Me As I Am              | 5  | 5  |
| 19 John Anderson, Country 'til I Die        | 5  | 5  |
| 20 Gibson/Miller Band, Red, White And Blue  | 5  | 4  |

Billboard's definitive dual-directory to the Nashville (615) region and the Country Music business nationwide!

# Nashville 615/Country Music Sourcebook 1994



Nashville 615 gives you 25 categories of non-country entertainment contacts all prefixed by the (615) area code: • Record Labels • Distributors • Manufacturers • Instrument Rental • Hotels • Charter services and much more!

Country Music Sourcebook 1994 provides vital information for people, products & services involved in the U.S. & Canadian Country Music scene: • Personal Managers • Booking Agents • Country Artists • Music Publishers • Radio Stations • Concert Promoters • Tour Venues • Record Producers • Plus Canadian Country Radio & Venues.

Put them together and you get an invaluable guide to the Nashville scene and Country Music - or any genre of music!

To order your copy today for just \$50 plus \$4 shipping and handling (\$10 for international orders) call toll-free 1-800-223-7524 or 1-800-344-7119. In NY call (212) 536-5174. In NJ call (908) 363-4156. Or mail this ad with your payment to: Billboard Directories, P.O. Box 2016, Lakewood, NJ 08701.

BDCD3064



# COUNTRY AIRPLAY MONITOR POWER PLAYISTS

Playlists supplied by Broadcast Data Systems' Radio Track service. Stations selected from panel of leading broadcasters in 125 radio markets, electronically monitored 24 hours a day, 7 days a week. Songs ranked by number of plays in monitored week.

FOR WEEK ENDING  
OCTOBER 16, 1994

| WYNY  |  | WUSN  |                                      |
|---|--|---|--------------------------------------|
| New York                                    | PD: Chris Kampmeier<br>MD: Theda Sandiford | Chicago                                     | PD: Dean McNeil<br>MD: Tricia Biondo |
| TW  | LW   | TW  | LW                                   |
| 1 Alan Jackson, Livin' On Love              | 42 31                                      | 1 Tracy Byrd, Watermelon Crawl              | 35 25                                |
| 2 Pam Tillis, When You Walk In The Room     | 41 26                                      | 2 Gary Chapin Carpenter, Shut Up And Kiss   | 35 22                                |
| 3 Brooks & Dunn, She's Not The Cheatin' Ki  | 41 29                                      | 3 Garth Brooks, Callin' Baton Rouge         | 35 33                                |
| 4 Patty Loveless, I Try To Think About Elv  | 40 31                                      | 4 Pam Tillis, When You Walk In The Room     | 33 26                                |
| 5 Collin Raye, Man Of My Word               | 40 24                                      | 5 Brooks & Dunn, She's Not The Cheatin' Ki  | 30 31                                |
| 6 Neal McCoy, The City Put The Country Bac  | 39 11                                      | 6 Sammy Kershaw, Third Rate Romance         | 30 27                                |
| 7 Tracy Lawrence, I See It Now              | 36 22                                      | 7 Alan Jackson, Livin' On Love              | 29 16                                |
| 8 Mary Chapin Carpenter, Shut Up And Kiss   | 22 23                                      | 8 Toby Keith, Who's That Man                | 28 23                                |
| 9 Clay Walker, If I Could Make A Living     | 20 16                                      | 9 Clay Walker, If I Could Make A Living     | 26 20                                |
| 10 Sammy Kershaw, Third Rate Romance        | 19 30                                      | 10 John Michael Montgomery, If You've Got L | 26 19                                |
| 11 Tracy Byrd, Watermelon Crawl             | 17 18                                      | 11 Collin Raye, Man Of My Word              | 25 20                                |
| 12 Garth Brooks, Callin' Baton Rouge        | 17 29                                      | 12 Little Texas, Kick A Little              | 23 20                                |
| 13 Little Texas, Kick A Little              | 16 14                                      | 13 George Strait, The Big One               | 22 16                                |
| 14 George Strait, The Big One               | 16 10                                      | 14 Patty Loveless, I Try To Think About Elv | 21 21                                |
| 15 Joe Diffie, Third Rock From The Sun      | 14 16                                      | 15 Clint Black, Untanglin' My Mind          | 21 18                                |
| 16 Tim McGraw, Down On The Farm             | 14 15                                      | 16 Tim McGraw, Down On The Farm             | 20 18                                |
| 17 John & Audrey Wiggins, Has Anybody Seen  | 13 19                                      | 17 John & Audrey Wiggins, Has Anybody Seen  | 19 21                                |
| 18 Clint Black, Untanglin' My Mind          | 13 14                                      | 18 Neal McCoy, The City Put The Country Bac | 19 18                                |
| 19 Kathy Mattea, Nobody's Gonna Rain On Our | 13 15                                      | 19 Tracy Lawrence, I See It Now             | 19 19                                |
| 20 The Mavericks, There Goes My Heart       | 13 13                                      | 20 Mark Chesnut, She Dreams                 | 18 17                                |
| 21 Martina McBride, My Baby Loves Me        | 12 10                                      | 21 Billy Ray Cyrus, Storm In The Heartland  | 18 11                                |
| 22 Toby Keith, Who's That Man               | 12 28                                      | 22 Vince Gill, When Love Finds You          | 17 9                                 |
| 23 Diamond Rio, Love A Little Stronger      | 12 13                                      | 23 Billy Dean, Man Will Be Boys             | 17 17                                |
| 24 Hal Ketchum, (Tonight) We Just Might Fal | 12 10                                      | 24 Joe Diffie, Pickup Man                   | 17 6                                 |
| 25 John Michael Montgomery, If You've Got L | 12 15                                      | 25 Ken Mellons, Jukebox Junkie              | 17 25                                |
| 26 Tanya Tucker, You Just Watch Me          | 12 15                                      | 26 Tanya Tucker, You Just Watch Me          | 16 8                                 |
| 27 Trisha Yearwood, Xos's And Oos's         | 11 11                                      | 27 Faith Hill, Take Me As I Am              | 15 18                                |
| 28 Lee & Audrey Wiggins, Has Anybody Seen   | 11 17                                      | 28 David Ball, When The Thought Of You Catc | 15 14                                |
| 29 Joe Roy Parrell, Take These Chains From  | 10 10                                      | 29 Trisha Yearwood, Xos's And Oos's         | 15 18                                |
| 30 Clint Black, Half The Man                | 10 5                                       | 30 Lari White, Now I Know                   | 15 11                                |

| KZLA  |                                  | WXTU                                       |                                  |
|---|----------------------------------|--|----------------------------------|
| Los Angeles                                 | PD: R.J. Curtis<br>MD: Lisa Puzo | Philadelphia                               | PD: John Hart<br>MD: Mike Brophy |
| TW  | LW                               | TW   | LW                               |
| 1 Clay Walker, If I Could Make A Living     | 34 26                            | 1 Kathy Mattea, Nobody's Gonna Rain On Our | 34 29                            |
| 2 Neal McCoy, The City Put The Country Bac  | 32 31                            | 2 Patty Loveless, I Try To Think About Elv | 34 21                            |
| 3 Toby Keith, Who's That Man                | 31 31                            | 3 Neal McCoy, The City Put The Country Bac | 33 32                            |
| 4 Collin Raye, Man Of My Word               | 31 29                            | 4 Pam Tillis, When You Walk In The Room    | 32 21                            |
| 5 Mark Chesnut, She Dreams                  | 30 31                            | 5 John Michael Montgomery, If You've Got L | 31 30                            |
| 6 Brooks & Dunn, She's Not The Cheatin' Ki  | 30 33                            | 6 Garth Brooks, Callin' Baton Rouge        | 31 30                            |
| 7 Sammy Kershaw, Third Rate Romance         | 30 22                            | 7 Tim McGraw, Down On The Farm             | 31 32                            |
| 8 Alan Jackson, Livin' On Love              | 29 30                            | 8 Mark Chesnut, She Dreams                 | 30 16                            |
| 9 Patty Loveless, I Try To Think About Elv  | 29 31                            | 9 Brooks & Dunn, She's Not The Cheatin' Ki | 29 31                            |
| 10 Garth Brooks, Callin' Baton Rouge        | 29 19                            | 10 Sammy Kershaw, Third Rate Romance       | 29 19                            |
| 11 Joe Diffie, Third Rock From The Sun      | 29 15                            | 11 Trisha Yearwood, Xos's And Oos's        | 24 22                            |
| 12 Little Texas, Kick A Little              | 25 21                            | 12 Tracy Lawrence, I See It Now            | 22 20                            |
| 13 Mary Chapin Carpenter, Shut Up And Kiss  | 25 23                            | 13 The Tractors, Baby Likes To Rock It     | 22 20                            |
| 14 Reba McEntire, She Thinks His Name Was J | 24 28                            | 14 John Berry, What's In It For Me         | 22 21                            |
| 15 Tracy Byrd, Watermelon Crawl             | 24 22                            | 15 George Strait, The Big One              | 21 19                            |
| 16 George Strait, The Big One               | 23 23                            | 16 Blackhawk, I Sure Can Smell The Rain    | 21 17                            |
| 17 John & Audrey Wiggins, Has Anybody Seen  | 21 14                            | 17 Alan Jackson, Livin' On Love            | 21 18                            |
| 18 The Tractors, Baby Likes To Rock It      | 21 18                            | 18 Randy Travis, Before You Get It All     | 21 16                            |
| 19 John Michael Montgomery, If You've Got L | 20 13                            | 19 Tracy Byrd, Watermelon Crawl            | 21 21                            |
| 20 Mark Collie, Hard Lovin' Woman           | 20 12                            | 20 Clint Black, Untanglin' My Mind         | 20 19                            |
| 21 Pam Tillis, When You Walk In The Room    | 19 19                            | 21 Tanya Tucker, You Just Watch Me         | 20 19                            |
| 22 Vince Gill, When Love Finds You          | 19 21                            | 22 Reba McEntire, Why Haven't I Heard From | 20 16                            |
| 23 Clint Black, Untanglin' My Mind          | 18 20                            | 23 Alan Jackson, Livin' On Love            | 19 20                            |
| 24 Vince Gill, When Love Finds You          | 18 14                            | 24 Collin Raye, Man Of My Word             | 19 32                            |
| 25 Tim McGraw, Down On The Farm             | 17 22                            | 25 The Mavericks, There Goes My Heart      | 19 24                            |
| 26 Trisha Yearwood, Xos's And Oos's         | 17 15                            | 26 Kathy Mattea, Walking Away A Winner     | 19 18                            |
| 27 Kathy Mattea, Nobody's Gonna Rain On Our | 17 31                            | 27 Aaron Tippin, I Got It Honest           | 18 16                            |
| 28 Billy Dean, Cowboy Band                  | 16 12                            | 28 Ken Mellons, Jukebox Junkie             | 18 15                            |
| 29 Blackhawk, I Sure Can Smell The Rain     | 16 17                            | 29 Faith Hill, Take Me As I Am             | 18 1                             |
| 30 Ken Mellons, Jukebox Junkie              | 16 10                            | 30 Vince Gill, Whenever You Come Around    | 17 16                            |

| KSCS  |                                   | WKHX  |                                      |
|---|-----------------------------------|---|--------------------------------------|
| Ft. Worth                                   | PD: Dean James<br>MD: Bill Kinder | Atlanta                                     | PD: Neil McGinley<br>MD: Johnny Gray |
| TW  | LW                                | TW  | LW                                   |
| 1 Alan Jackson, Livin' On Love              | 34 29                             | 1 Garth Brooks, Callin' Baton Rouge         | 39 31                                |
| 2 Neal McCoy, The City Put The Country Bac  | 33 34                             | 2 Toby Keith, Who's That Man                | 39 34                                |
| 3 Pam Tillis, When You Walk In The Room     | 31 36                             | 3 Tracy Byrd, Watermelon Crawl              | 38 36                                |
| 4 Brooks & Dunn, She's Not The Cheatin' Ki  | 26 20                             | 4 Mary Chapin Carpenter, Shut Up And Kiss   | 37 37                                |
| 5 Sammy Kershaw, Third Rate Romance         | 26 18                             | 5 Brooks & Dunn, She's Not The Cheatin' Ki  | 35 36                                |
| 6 Blackhawk, I Sure Can Smell The Rain      | 26 17                             | 6 Pam Tillis, When You Walk In The Room     | 34 36                                |
| 7 Collin Raye, Man Of My Word               | 25 19                             | 7 Mark Chesnut, She Dreams                  | 34 36                                |
| 8 Tracy Byrd, Watermelon Crawl              | 25 18                             | 8 Mary Chapin Carpenter, Shut Up And Kiss   | 33 31                                |
| 9 George Strait, The Big One                | 25 21                             | 9 Alan Jackson, Livin' On Love              | 31 30                                |
| 10 Tracy Lawrence, I See It Now             | 23 19                             | 10 Neal McCoy, The City Put The Country Bac | 26 24                                |
| 11 Brooks & Dunn, She's Not The Cheatin' Ki | 22 20                             | 11 Sammy Kershaw, Third Rate Romance        | 25 23                                |
| 12 Toby Keith, Who's That Man               | 22 24                             | 12 Little Texas, Kick A Little              | 25 21                                |
| 13 Patty Loveless, I Try To Think About Elv | 21 32                             | 13 Kathy Mattea, Nobody's Gonna Rain On Our | 25 25                                |
| 14 Mark Chesnut, She Dreams                 | 20 29                             | 14 Tracy Lawrence, I See It Now             | 25 21                                |
| 15 Kathy Mattea, Nobody's Gonna Rain On Our | 20 33                             | 15 Blackhawk, I Sure Can Smell The Rain     | 24 21                                |
| 16 John & Audrey Wiggins, Has Anybody Seen  | 18 12                             | 16 Collin Raye, Man Of My Word              | 24 24                                |
| 17 David Ball, When The Thought Of You Catc | 18 12                             | 17 Alan Jackson, Livin' On Love             | 24 24                                |
| 18 John & Audrey Wiggins, Has Anybody Seen  | 17 15                             | 18 John & Audrey Wiggins, Has Anybody Seen  | 21 11                                |
| 19 David Ball, When The Thought Of You Catc | 17 36                             | 19 David Ball, When The Thought Of You Catc | 21 12                                |
| 20 Vince Gill, When Love Finds You          | 16 10                             | 20 John Michael Montgomery, If You've Got L | 21 17                                |
| 21 John Michael Montgomery, If You've Got L | 15 13                             | 21 Clay Walker, If I Could Make A Living    | 20 21                                |
| 22 Clay Walker, If I Could Make A Living    | 15 13                             | 22 Clint Black, Untanglin' My Mind          | 19 18                                |
| 23 Archer/Park, Where There's Smoke         | 15 15                             | 23 Tim McGraw, Down On The Farm             | 18 25                                |
| 24 Clint Black, Untanglin' My Mind          | 14 12                             | 24 Trisha Yearwood, Xos's And Oos's         | 18 16                                |
| 25 The Tractors, Baby Likes To Rock It      | 13 25                             | 25 Randy Travis, Whisper My Name            | 17 16                                |
| 26 Lari White, Now I Know                   | 13 12                             | 26 The Mavericks, O What A Thrill           | 16 12                                |
| 27 Ken Mellons, Jukebox Junkie              | 12 25                             | 27 Joe Diffie, Third Rock From The Sun      | 16 27                                |
| 28 Rick Trevino, Doctor Time                | 12 10                             | 28 John Berry, What's In It For Me          | 16 18                                |
| 29 Faith Hill, Take Me As I Am              | 11 20                             | 29 Alabama, We Can't Love Like This Anymor  | 16 20                                |
| 30 Faith Hill, Piece Of My Heart            | 10 7                              | 30 Vince Gill, What The Cowgirls Do         | 15 16                                |

| KILT  |                                      | WMZQ  |                                      |
|---|--------------------------------------|---|--------------------------------------|
| Houston                                     | PD: Rick Candea<br>MD: Debbie Murray | Washington, DC                              | PD: Gary McCarrie<br>MD: Mac Daniels |
| TW  | LW                                   | TW  | LW                                   |
| 1 Brooks & Dunn, She's Not The Cheatin' Ki  | 39 37                                | 1 Toby Keith, Who's That Man                | 37 32                                |
| 2 Clay Walker, If I Could Make A Living     | 38 36                                | 2 Pam Tillis, When You Walk In The Room     | 37 33                                |
| 3 Garth Brooks, Callin' Baton Rouge         | 38 38                                | 3 Alan Jackson, Livin' On Love              | 37 37                                |
| 4 Collin Raye, Man Of My Word               | 37 35                                | 4 Garth Brooks, Callin' Baton Rouge         | 36 34                                |
| 5 Pam Tillis, When You Walk In The Room     | 37 37                                | 5 Mary Chapin Carpenter, Shut Up And Kiss   | 36 28                                |
| 6 Alan Jackson, Livin' On Love              | 37 37                                | 6 Kathy Mattea, Nobody's Gonna Rain On Our  | 36 28                                |
| 7 Sammy Kershaw, Third Rate Romance         | 36 26                                | 7 Collin Raye, Man Of My Word               | 35 35                                |
| 8 Neal McCoy, The City Put The Country Bac  | 35 39                                | 8 Brooks & Dunn, She's Not The Cheatin' Ki  | 34 36                                |
| 9 Blackhawk, I Sure Can Smell The Rain      | 35 24                                | 9 Patty Loveless, I Try To Think About Elv  | 33 28                                |
| 10 Toby Keith, Who's That Man               | 35 36                                | 10 Neal McCoy, The City Put The Country Bac | 32 26                                |
| 11 Little Texas, Kick A Little              | 34 25                                | 11 Alabama, We Can't Love Like This Anymor  | 28 23                                |
| 12 Mark Chesnut, She Dreams                 | 31 37                                | 12 Blackhawk, I Sure Can Smell The Rain     | 27 35                                |
| 13 Kathy Mattea, Nobody's Gonna Rain On Our | 31 39                                | 13 Clint Black, Untanglin' My Mind          | 27 25                                |
| 14 Tracy Lawrence, I See It Now             | 29 26                                | 14 Little Texas, Kick A Little              | 27 25                                |
| 15 Mary Chapin Carpenter, Shut Up And Kiss  | 28 30                                | 15 Faith Hill, Take Me As I Am              | 26 15                                |
| 16 Ken Mellons, Jukebox Junkie              | 28 10                                | 16 Tracy Lawrence, I See It Now             | 26 25                                |
| 17 George Strait, The Big One               | 27 14                                | 17 John & Audrey Wiggins, Has Anybody Seen  | 26 25                                |
| 18 George Ducas, Teardrops                  | 27 26                                | 18 Mark Chesnut, She Dreams                 | 25 26                                |
| 19 Patty Loveless, I Try To Think About Elv | 26 27                                | 19 David Ball, When The Thought Of You Catc | 25 25                                |
| 20 John & Audrey Wiggins, Has Anybody Seen  | 26 28                                | 20 John Michael Montgomery, If You've Got L | 24 16                                |
| 21 Alabama, We Can't Love Like This Anymor  | 24 19                                | 21 Hal Ketchum, That's What I Get           | 21 14                                |
| 22 Clint Black, Untanglin' My Mind          | 21 23                                | 22 The Tractors, Baby Likes To Rock It      | 20 29                                |
| 23 Tanya Tucker, You Just Watch Me          | 20 12                                | 23 Clay Walker, If I Could Make A Living    | 18 15                                |
| 24 David Ball, When The Thought Of You Catc | 20 8                                 | 24 Clint Black, Untanglin' My Mind          | 17 24                                |
| 25 Tim McGraw, Down On The Farm             | 19 39                                | 25 The Mavericks, There Goes My Heart       | 17 17                                |
| 26 Joe Diffie, Third Rock From The Sun      | 18 38                                | 26 George Strait, The Big One               | 17 17                                |
| 27 Lari White, Now I Know                   | 18 20                                | 27 Vince Gill, When Love Finds You          | 17 13                                |
| 28 John Michael Montgomery, If You've Got L | 16 14                                | 28 Tanya Tucker, You Just Watch Me          | 15 11                                |
| 29 Trisha Yearwood, Xos's And Oos's         | 16 11                                | 29 Diamond Rio, Night Is Fallin' In My Hear | 14 2                                 |
| 30 Sawyer Brown, Hard To Say                | 15 15                                | 30 Sammy Kershaw, Third Rate Romance        | 14 18                                |

| KIKK  |                                       | KPLX  |                                     |
|---|---------------------------------------|---|-------------------------------------|
| Houston                                     | PD: Carl Geisler<br>MD: Debbie Murray | Dallas                                      | PD: Brad Chambers<br>MD: Chris Huff |
| TW  | LW                                    | TW  | LW                                  |
| 1 Brooks & Dunn, She's Not The Cheatin' Ki  | 60 65                                 | 1 Mary Chapin Carpenter, Shut Up And Kiss   | 42 25                               |
| 2 Garth Brooks, Callin' Baton Rouge         | 60 69                                 | 2 Toby Keith, Who's That Man                | 39 35                               |
| 3 Mary Chapin Carpenter, Shut Up And Kiss   | 60 68                                 | 3 Alan Jackson, Livin' On Love              | 39 34                               |
| 4 Little Texas, Kick A Little               | 60 72                                 | 4 Collin Raye, Man Of My Word               | 38 24                               |
| 5 Alan Jackson, Livin' On Love              | 59 67                                 | 5 Pam Tillis, When You Walk In The Room     | 37 36                               |
| 6 Toby Keith, Who's That Man                | 59 68                                 | 6 Alabama, We Can't Love Like This Anymor   | 35 34                               |
| 7 Tracy Lawrence, I See It Now              | 59 58                                 | 7 Blackhawk, I Sure Can Smell The Rain      | 34 23                               |
| 8 Patty Loveless, I Try To Think About Elv  | 53 32                                 | 8 Tracy Lawrence, I See It Now              | 34 34                               |
| 9 Ken Mellons, Jukebox Junkie               | 53 33                                 | 9 Clay Walker, If I Could Make A Living     | 29 26                               |
| 10 Tim McGraw, Down On The Farm             | 49 69                                 | 10 The Tractors, Baby Likes To Rock It      | 29 27                               |
| 11 Blackhawk, I Sure Can Smell The Rain     | 40 32                                 | 11 Brooks & Dunn, She's Not The Cheatin' Ki | 28 34                               |
| 12 Neal McCoy, The City Put The Country Bac | 37 31                                 | 12 Patty Loveless, I Try To Think About Elv | 28 23                               |
| 13 David Ball, When The Thought Of You Catc | 36 32                                 | 13 David Ball, When The Thought Of You Catc | 26 19                               |
| 14 Clay Walker, If I Could Make A Living    | 34 31                                 | 14 George Strait, The Big One               | 26 27                               |
| 15 Pam Tillis, When You Walk In The Room    | 34 33                                 | 15 Ken Mellons, Jukebox Junkie              | 25 27                               |
| 16 Mark Chesnut, She Dreams                 | 32 30                                 | 16 Tracy Byrd, Watermelon Crawl             | 25 26                               |
| 17 Sammy Kershaw, Third Rate Romance        | 32 25                                 | 17 Tim McGraw, Down On The Farm             | 24 20                               |
| 18 Tracy Lawrence, I See It Now             | 30 30                                 | 18 Lari White, Now I Know                   | 24 19                               |
| 19 Joe Diffie, Third Rock From The Sun      | 30 63                                 | 19 Neal McCoy, The City Put The Country Bac | 24 21                               |
| 20 John Michael Montgomery, If You've Got L | 29 23                                 | 20 Sammy Kershaw, Third Rate Romance        | 23 23                               |
| 21 George Strait, The Big One               | 28 30                                 | 21 Vince Gill, When Love Finds You          | 23 20                               |
| 22 Clint Black, Untanglin' My Mind          | 25 20                                 | 22 Trisha Yearwood, Xos's And Oos's         | 23 20                               |
| 23 Bryan White, Eugene You Genius           | 25 23                                 | 23 Joe Diffie, Third Rock From The Sun      | 23 23                               |
| 24 Tanya Tucker, You Just Watch Me          | 23 10                                 | 24 Clint Black, Untanglin' My Mind          | 22 23                               |
| 25 The Tractors, Baby Likes To Rock It      | 22 18                                 | 25 Garth Brooks, Callin' Baton Rouge        | 22 10                               |
| 26 Clint Black, Untanglin' My Mind          | 22 18                                 | 26 Diamond Rio, Love A Little Stronger      | 22 21                               |
| 27 Collin Raye, Man Of My Word              | 22 18                                 | 27 John & Audrey Wiggins, Has Anybody Seen  | 21 23                               |
| 28 Alabama, We Can't Love Like This Anymor  | 21 16                                 | 28 Mark Chesnut, She Dreams                 | 20 31                               |
| 29 Trisha Yearwood, Xos's And Oos's         | 20 15                                 | 29 Doug Stone, More Love                    | 19 27                               |
| 30 Archer/Park, Where There's Smoke         | 20 22                                 | 30 Rick Trevino, She Can't Say I Didn't Cry | 19 26                               |

| WWWV  |                                      | KMPS  |   |
|---|--------------------------------------|---|---|
| Detroit                                     | PD: Alan Sledge<br>MD: Kevin Scollin | Seattle                                     | PD: Tony Thomas<br>MD: Carl Ann Strader |
| TW  | LW                                   | TW  | LW                                      |
| 1 Alan Jackson, Livin' On Love              | 37 36                                | 1 Mary Chapin Carpenter, Shut Up And Kiss   | 45 41                                   |
| 2 Pam Tillis, When You Walk In The Room     | 37 29                                | 2 Tracy Byrd, Watermelon Crawl              | 43 39                                   |
| 3 Little Texas, Kick A Little               | 37 35                                | 3 Pam Tillis, When You Walk In The Room     | 39 38                                   |
| 4 Neal McCoy, The City Put The Country Bac  | 36 34                                | 4 Brooks & Dunn, She's Not The Cheatin' Ki  | 37 34                                   |
| 5 Sammy Kershaw, Third Rate Romance         | 36 36                                | 5 Garth Brooks, Callin' Baton Rouge         | 37 37                                   |
| 6 Tracy Byrd, Watermelon Crawl              | 35 28                                | 6 Alan Jackson, Livin' On Love              | 37 34                                   |
| 7 Collin Raye, Man Of My Word               | 34 34                                | 7 Pam Loveless, I Try To Think About Elv    | 35 27                                   |
| 8 Kathy Mattea, Nobody's Gonna Rain On Our  | 34 34                                | 8 Ken Mellons, Jukebox Junkie               | 35 26                                   |
| 9 Mary Chapin Carpenter, Shut Up And Kiss   | 32 31                                | 9 Collin Raye, Man Of My Word               | 33 26                                   |
| 10 John Michael Montgomery, If You've Got L | 31 38                                | 10 George Strait, The Big One               | 30 26                                   |
| 11 Brooks & Dunn, She's Not The Cheatin' Ki | 31 27                                | 11 John Michael Montgomery, If You've Got L | 29 26                                   |
| 12 David Ball, When The Thought Of You Catc | 31 20                                | 12 The Tractors, Baby Likes To Rock It      | 29 27                                   |
| 13 Blackhawk, I Sure Can Smell The Rain     | 29 28                                | 13 Sammy Kershaw, Third Rate Romance        | 27 28                                   |
| 14 Tracy Lawrence, I See It Now             | 29 27                                | 14 Little Texas, Kick A Little              | 27 25                                   |
| 15 Clay Walker, If I Could Make A Living    | 29 27                                | 15 Lorie Morgan, Heart Over Mind            | 27 21                                   |
| 16 Ken Mellons, Jukebox Junkie              | 28 27                                | 16 Kathy Mattea, Nobody's Gonna Rain On Our | 26 32                                   |
| 17 Vince Gill, When Love Finds You          | 27 8                                 | 17 Clay Walker, If I Could Make A Living    | 26 17                                   |
| 18 John & Audrey Wiggins, Has Anybody Seen  | 26 21                                | 18 Neal McCoy, The City Put The Country Bac | 25 22                                   |
| 19 The Tractors, Baby Likes To Rock It      | 26 26                                | 19 Joe Diffie, Third Rock From The Sun      | 25 25                                   |
| 20 Patty Loveless, I Try To Think About Elv | 25 25                                | 20 Vince Gill, When Love Finds You          | 25 25                                   |
| 21 Archer/Park, Where There's Smoke         | 25 25                                | 21 Toby Keith, Who's That Man               | 25 36                                   |
| 22 Joe Diffie, Third Rock From The Sun      | 25 25                                | 22 Tracy Lawrence, I See It Now             | 24 22                                   |
| 23 Brooks & Dunn, She's Not The Cheatin' Ki | 25 20                                | 23 Joe Diffie, Pickup Man                   | 22 20                                   |
| 24 Tim McGraw, Down On The Farm             | 22 26                                | 24 David Ball, When The Thought Of You Catc | 22 19                                   |
| 25 John Berry, What's In It For Me          | 22 22                                | 25 Mark Chesnut, She Dreams                 | 21 31                                   |
| 26 Sawyer Brown, Hard To Say                | 21 23                                | 26 Reba McEntire, She Thinks His Name Was J | 21 19                                   |
| 27 John & Audrey Wiggins, Has Anybody Seen  | 20 15                                | 27 Faith Hill, Take Me As I Am              | 19 17                                   |
| 28 George Strait, The Big One               | 19 18                                | 28 Billy Ray Cyrus, Storm In The Heartland  | 18 22                                   |
| 29 Trisha Yearwood, Xos's And Oos's         | 19 18                                | 29 Vince Gill, What The Cowgirls Do         | 17 20                                   |
| 30 Clint Black, Untanglin' My Mind          | 19 16                                | 30 Trisha Yearwood, Xos's And Oos's         | 17 17                                   |

| KYNG  |                 | KKBQ  |                                      |
|---|-----------------|---|--------------------------------------|
| Dallas                                      | PD: Dan Pearman | Houston                                     | PD: Dene Hallam<br>MD: Jeff Garrison |
| TW  | LW              | TW  | LW                                   |
| 1 Patty Loveless, I Try To Think About Elv  | 49 47           | 1 Clay Walker, If I Could Make A Living     | 51 51                                |
| 2 Joe Diffie, Third Rock From The Sun       | 48 47           | 2 Mary Chapin Carpenter, Shut Up And Kiss   | 51 42                                |
| 3 Brooks & Dunn, She's Not The Cheatin' Ki  | 46 45           | 3 Garth Brooks, Callin' Baton Rouge         | 51 42                                |
| 4 Pam Tillis, When You Walk In The Room     | 46 45           | 4 Patty Loveless, I Try To Think About Elv  | 50 45                                |
| 5 Mary Chapin Carpenter, Shut Up And Kiss   | 43 43           | 5 Sammy Kershaw, Third Rate Romance         | 50 45                                |
| 6 George Strait, The Big One                | 41 35           | 6 Joe Diffie, Third Rock From The Sun       | 50 46                                |
| 7 Blackhawk, I Sure Can Smell The Rain      | 38 33           | 7 Tim McGraw, Down On The Farm              | 49 43                                |
| 8 Tracy Lawrence, I See It Now              | 36 26           | 8 Doug Stone, More Love                     | 47 48                                |
| 9 Alan Jackson, Livin' On Love              | 35 42           | 9 Tracy Lawrence, I See It Now              | 46 32                                |
| 10 The Tractors, Baby Likes To Rock It      | 33 35           | 10 Alan Jackson, Livin' On Love             | 35 33                                |
| 11 The Mavericks, There Goes My Heart       | 33 39           | 11 Toby Keith, Who's That Man               | 35 45                                |
| 12 Brooks & Dunn, She's Not The Cheatin' Ki | 33 39           | 12 The Tractors, Baby Likes To Rock It      | 34 36                                |
| 13 Garth Brooks, Callin' Baton Rouge        | 31 31           | 13 George Strait, The Big One               | 33 35                                |
| 14 Sammy Kershaw, Third Rate Romance        | 30 27           | 14 Vince Gill, When Love Finds You          | 32 26                                |
| 15 Tim McGraw, Down On The Farm             | 28 44           | 15 Collin Raye, Man Of My Word              | 32 25                                |
| 16 John & Audrey Wiggins, Has Anybody Seen  | 28 20           | 16 Clint Black, Untanglin' My Mind          | 32 33                                |
| 17 David Ball, When The Thought Of You Catc | 28 27           | 17 Mark Chesnut, She Dreams                 | 31 26                                |
| 18 Tammy Wynette/Wynonna, Girl Thing        | 26 28           | 18 Rick Trevino, Doctor Time                | 31 32                                |
| 19 Tanya Tucker, You Just Watch Me          | 26 24           | 19 John Michael Montgomery, If You've Got L | 25 18                                |
| 20 Vince Gill, When Love Finds You          | 26 28           | 20 Pam Tillis, When You Walk In The Room    | 31 30                                |
| 21 John Michael Montgomery, If You've Got L | 25 28           | 21 Blackhawk, I Sure Can Smell The Rain     | 31 26                                |
| 22 Toby Keith, Who's That Man               | 25 37           | 22 Joe Diffie, Pickup Man                   | 30 20                                |
| 23 Clay Walker, If I Could Make A Living    | 25 29           | 23 David Ball, When The Thought Of You Catc | 30 31                                |
| 24 Tracy                                    |                 |   |                                      |



# COUNTRY AIRPLAY MONITOR

## FOR WEEK ENDING OCTOBER 16, 1994

Playlists supplied by Broadcast Data Systems' Radio Track service. Stations selected from panel of leading broadcasters in 125 radio markets, electronically monitored 24 hours a day, 7 days a week. Songs ranked by number of plays in monitored week.

| KYGO   |   | PD: John St. John<br>MD: Jennifer Page |    |
|--------|---|--|----|
| Denver |   | TW                                     | LW |
| 1      | Sammy Kershaw, Third Rate Romance         | 37                                     | 30 |
| 2      | Alan Jackson, Livin' On Love              | 36                                     | 30 |
| 3      | Pam Tillis, When You Walk In The Room     | 32                                     | 27 |
| 4      | Mary Chapin Carpenter, Shut Up And Kiss   | 32                                     | 25 |
| 5      | Little Texas, Kick A Little               | 31                                     | 17 |
| 6      | Clay Walker, If I Could Make A Living     | 31                                     | 26 |
| 7      | Tracy Byrd, Watermelon Crawl              | 31                                     | 28 |
| 8      | Neal McCoy, The City Put The Country Back | 31                                     | 25 |
| 9      | Mark Chesnut, She Dreams                  | 29                                     | 20 |
| 10     | Brooks & Dunn, She's Not The Cheatin' Ki  | 29                                     | 30 |
| 11     | George Strait, The Big One                | 27                                     | 21 |
| 12     | John Michael Montgomery, If You've Got L  | 26                                     | 21 |
| 13     | David Ball, When The Thought Of You Catc  | 26                                     | 25 |
| 14     | Clint Black, Untanglin' My Mind           | 25                                     | 25 |
| 15     | Alabama, We Can't Love Like This Anymor   | 23                                     | 10 |
| 16     | Tanya Tucker, You Just Watch Me           | 22                                     | 17 |
| 17     | Collin Raye, Man Of My Word               | 22                                     | 22 |
| 18     | Tracy Lawrence, I See It Now              | 22                                     | 22 |
| 19     | John & Audrey Wiggins, Has Anybody Seen   | 22                                     | 13 |
| 20     | Blackhawk, I Sure Can Smell The Rain      | 20                                     | 19 |
| 21     | Mark Collie, Hard Lovin' Woman            | 20                                     | 24 |
| 22     | Faith Hill, Take Me As I Am               | 19                                     | 12 |
| 23     | Vince Gill, When Love Finds You           | 18                                     | 9  |
| 24     | Rick Trevino, Doctor Time                 | 17                                     | 10 |
| 25     | Lari White, Now I Know                    | 16                                     | 7  |
| 26     | Garth Brooks, Callin' Baton Rouge         | 14                                     | 33 |
| 27     | Joe Diffie, Third Rock From The Sun       | 14                                     | 31 |
| 28     | Patty Loveless, I Try To Think About Ev   | 14                                     | 27 |
| 29     | Ricky Van Shelton, Wherever She Is        | 14                                     | 0  |
| 30     | Ken Mellons, Jukebox Junkie               | 14                                     | 7  |

| WPOC      |  | PD: Bob Moody<br>MD: Greg Cole |    |
|-----------|--|--------------------------------|----|
| Baltimore |  | TW                             | LW |
| 1         | Pam Tillis, When You Walk In The Room    | 38                             | 34 |
| 2         | The Tractors, Baby Likes To Rock It      | 37                             | 31 |
| 3         | Garth Brooks, Callin' Baton Rouge        | 36                             | 32 |
| 4         | Brooks & Dunn, She's Not The Cheatin' Ki | 36                             | 32 |
| 5         | Neal McCoy, The City Put The Country Bac | 35                             | 25 |
| 6         | Patty Loveless, I Try To Think About Ev  | 34                             | 33 |
| 7         | Collin Raye, Man Of My Word              | 33                             | 24 |
| 8         | Little Texas, Kick A Little              | 33                             | 29 |
| 9         | Mary Chapin Carpenter, Shut Up And Kiss  | 33                             | 34 |
| 10        | Tracy Lawrence, I See It Now             | 29                             | 25 |
| 11        | Archer/Park, Where There's Smoke         | 29                             | 19 |
| 12        | George Strait, The Big One               | 29                             | 17 |
| 13        | John Michael Montgomery, If You've Got L | 28                             | 26 |
| 14        | Sammy Kershaw, Third Rate Romance        | 28                             | 23 |
| 15        | Alan Jackson, Livin' On Love             | 28                             | 28 |
| 16        | David Ball, When The Thought Of You Catc | 28                             | 24 |
| 17        | Blackhawk, I Sure Can Smell The Rain     | 27                             | 22 |
| 18        | Clint Black, Untanglin' My Mind          | 27                             | 28 |
| 19        | Tanya Tucker, You Just Watch Me          | 27                             | 23 |
| 20        | Lee Roy Parnell, Power Of Love           | 27                             | 23 |
| 21        | Tracy Byrd, Watermelon Crawl             | 26                             | 29 |
| 22        | Faith Hill, Take Me As I Am              | 26                             | 24 |
| 23        | Vince Gill, When Love Finds You          | 26                             | 17 |
| 24        | John & Audrey Wiggins, Has Anybody Seen  | 26                             | 27 |
| 25        | Alabama, We Can't Love Like This Anymor  | 26                             | 26 |
| 26        | Ken Mellons, Jukebox Junkie              | 26                             | 21 |
| 27        | The Mavericks, There Goes My Heart       | 26                             | 19 |
| 28        | Aaron Tippin, I Got It Honest            | 26                             | 16 |
| 29        | Clay Walker, If I Could Make A Living    | 24                             | 23 |
| 30        | Billy Ray Cyrus, Storm In The Heartland  | 24                             | 1  |

| KEYE        |  | PD: Greg Swedberg<br>MD: Mark Bauer |    |
|-------------|--|-------------------------------------|----|
| Minneapolis |  | TW                                  | LW |
| 1           | Little Texas, Kick A Little              | 36                                  | 38 |
| 2           | Patty Loveless, I Try To Think About Ev  | 34                                  | 36 |
| 3           | Brooks & Dunn, She's Not The Cheatin' Ki | 34                                  | 33 |
| 4           | Alan Jackson, Livin' On Love             | 34                                  | 33 |
| 5           | Pam Tillis, When You Walk In The Room    | 34                                  | 29 |
| 6           | Garth Brooks, Callin' Baton Rouge        | 33                                  | 34 |
| 7           | Tracy Byrd, Watermelon Crawl             | 33                                  | 26 |
| 8           | Kathy Mattea, Nobody's Gonna Rain On Our | 32                                  | 30 |
| 9           | Neal McCoy, The City Put The Country Bac | 32                                  | 26 |
| 10          | Sammy Kershaw, Third Rate Romance        | 31                                  | 24 |
| 11          | John Michael Montgomery, If You've Got L | 31                                  | 27 |
| 12          | Mary Chapin Carpenter, Shut Up And Kiss  | 29                                  | 28 |
| 13          | Clay Walker, If I Could Make A Living    | 29                                  | 29 |
| 14          | Blackhawk, I Sure Can Smell The Rain     | 28                                  | 21 |
| 15          | The Tractors, Baby Likes To Rock It      | 27                                  | 28 |
| 16          | Tracy Lawrence, I See It Now             | 27                                  | 25 |
| 17          | Ken Mellons, Jukebox Junkie              | 27                                  | 28 |
| 18          | Clint Black, Untanglin' My Mind          | 26                                  | 23 |
| 19          | David Ball, When The Thought Of You Catc | 26                                  | 23 |
| 20          | John & Audrey Wiggins, Has Anybody Seen  | 25                                  | 20 |
| 21          | Alabama, We Can't Love Like This Anymor  | 24                                  | 24 |
| 22          | Collin Raye, Man Of My Word              | 24                                  | 32 |
| 23          | Vince Gill, When Love Finds You          | 23                                  | 12 |
| 24          | Travis Tritt, Ten Feet Tall And Bulletpr | 21                                  | 26 |
| 25          | George Strait, The Big One               | 21                                  | 18 |
| 26          | Faith Hill, Take Me As I Am              | 21                                  | 17 |
| 27          | Rhett Akins, What They're Talking About  | 20                                  | 14 |
| 28          | Toby Keith, Who's That Man               | 19                                  | 24 |
| 29          | George Duca, Teardrops                   | 18                                  | 15 |
| 30          | Lari White, Now I Know                   | 18                                  | 19 |

| WFMS         |  | PD: Kevin Mason<br>MD: J.D. Cannon |    |
|--------------|--|------------------------------------|----|
| Indianapolis |  | TW                                 | LW |
| 1            | Collin Raye, Man Of My Word              | 38                                 | 31 |
| 2            | Tracy Byrd, Watermelon Crawl             | 37                                 | 34 |
| 3            | Neal McCoy, The City Put The Country Bac | 36                                 | 27 |
| 4            | Alan Jackson, Livin' On Love             | 36                                 | 29 |
| 5            | Pam Tillis, When You Walk In The Room    | 36                                 | 34 |
| 6            | Mary Chapin Carpenter, Shut Up And Kiss  | 35                                 | 25 |
| 7            | Sammy Kershaw, Third Rate Romance        | 33                                 | 25 |
| 8            | Tracy Lawrence, I See It Now             | 31                                 | 24 |
| 9            | Blackhawk, I Sure Can Smell The Rain     | 30                                 | 27 |
| 10           | Ken Mellons, Jukebox Junkie              | 27                                 | 21 |
| 11           | John Michael Montgomery, If You've Got L | 27                                 | 18 |
| 12           | Clay Walker, If I Could Make A Living    | 26                                 | 24 |
| 13           | John & Audrey Wiggins, Has Anybody Seen  | 25                                 | 23 |
| 14           | Patty Loveless, I Try To Think About Ev  | 24                                 | 37 |
| 15           | Little Texas, Kick A Little              | 24                                 | 26 |
| 16           | Clint Black, Untanglin' My Mind          | 24                                 | 20 |
| 17           | Brooks & Dunn, She's Not The Cheatin' Ki | 22                                 | 36 |
| 18           | George Strait, The Big One               | 22                                 | 19 |
| 19           | Aaron Tippin, I Got It Honest            | 21                                 | 17 |
| 20           | Vince Gill, When Love Finds You          | 21                                 | 16 |
| 21           | David Ball, When The Thought Of You Catc | 21                                 | 20 |
| 22           | The Tractors, Baby Likes To Rock It      | 21                                 | 29 |
| 23           | Ricky Van Shelton, Wherever She Is       | 20                                 | 12 |
| 24           | Garth Brooks, Callin' Baton Rouge        | 20                                 | 32 |
| 25           | Alabama, We Can't Love Like This Anymor  | 20                                 | 16 |
| 26           | George Duca, Teardrops                   | 17                                 | 15 |
| 27           | Faith Hill, Take Me As I Am              | 16                                 | 17 |
| 28           | Randy Travis, This Is Me                 | 16                                 | 28 |
| 29           | The Mavericks, There Goes My Heart       | 16                                 | 15 |
| 30           | Lari White, Now I Know                   | 16                                 | 14 |

| WAMZ       |  | PD: Coyote Calhoun<br>MD: Ron Hazard |    |
|------------|--|--------------------------------------|----|
| Louisville |  | TW                                   | LW |
| 1          | Tracy Lawrence, I See It Now             | 39                                   | 25 |
| 2          | Pam Tillis, When You Walk In The Room    | 38                                   | 34 |
| 3          | Brooks & Dunn, She's Not The Cheatin' Ki | 37                                   | 35 |
| 4          | Alan Jackson, Livin' On Love             | 37                                   | 31 |
| 5          | Sammy Kershaw, Third Rate Romance        | 35                                   | 33 |
| 6          | Toby Keith, Who's That Man               | 34                                   | 34 |
| 7          | Collin Raye, Man Of My Word              | 34                                   | 35 |
| 8          | Clay Walker, If I Could Make A Living    | 33                                   | 24 |
| 9          | Alan Jackson, Livin' On Love             | 32                                   | 40 |
| 10         | Vince Gill, When Love Finds You          | 28                                   | 20 |
| 11         | Neal McCoy, The City Put The Country Bac | 27                                   | 16 |
| 12         | Ricky Van Shelton, Wherever She Is       | 27                                   | 25 |
| 13         | George Strait, The Big One               | 25                                   | 28 |
| 14         | Faith Hill, Take Me As I Am              | 24                                   | 25 |
| 15         | The Tractors, Baby Likes To Rock It      | 24                                   | 17 |
| 16         | Blackhawk, I Sure Can Smell The Rain     | 23                                   | 31 |
| 17         | Alabama, We Can't Love Like This Anymor  | 23                                   | 19 |
| 18         | Mark Chesnut, Go! Through The Big D      | 23                                   | 10 |
| 19         | Neal McCoy, The City Put The Country Bac | 23                                   | 20 |
| 20         | John & Audrey Wiggins, Has Anybody Seen  | 22                                   | 22 |
| 21         | Clint Black, Untanglin' My Mind          | 22                                   | 28 |
| 22         | John Michael Montgomery, If You've Got L | 22                                   | 25 |
| 23         | Mary Chapin Carpenter, Shut Up And Kiss  | 22                                   | 26 |
| 24         | Hal Ketchum, That's What I Get           | 21                                   | 24 |
| 25         | Tanya Tucker, You Just Watch Me          | 21                                   | 14 |
| 26         | David Ball, When The Thought Of You Catc | 21                                   | 26 |
| 27         | Little Texas, Kick A Little              | 21                                   | 11 |
| 28         | John Anderson, Country 'til I Die        | 19                                   | 28 |
| 29         | Diamond Rio, Night Is Fallin' In My Hear | 19                                   | 29 |
| 30         | Alan Jackson, Gone Country               | 19                                   | 1  |

| WZZK       |  | PD: Jim Tice<br>MD: Todd Berry |    |
|------------|--|--------------------------------|----|
| Birmingham |  | TW                             | LW |
| 1          | Tracy Lawrence, I See It Now             | 38                             | 36 |
| 2          | Ken Mellons, Jukebox Junkie              | 38                             | 35 |
| 3          | Tracy Byrd, Watermelon Crawl             | 37                             | 33 |
| 4          | Collin Raye, Man Of My Word              | 36                             | 34 |
| 5          | Alan Jackson, Livin' On Love             | 36                             | 37 |
| 6          | Neal McCoy, The City Put The Country Bac | 35                             | 33 |
| 7          | Sammy Kershaw, Third Rate Romance        | 34                             | 34 |
| 8          | Pam Tillis, When You Walk In The Room    | 33                             | 21 |
| 9          | Clay Walker, If I Could Make A Living    | 30                             | 20 |
| 10         | George Strait, The Big One               | 29                             | 25 |
| 11         | The Tractors, Baby Likes To Rock It      | 29                             | 25 |
| 12         | Vince Gill, When Love Finds You          | 28                             | 24 |
| 13         | David Ball, When The Thought Of You Catc | 25                             | 25 |
| 14         | Alabama, We Can't Love Like This Anymor  | 25                             | 27 |
| 15         | Mary Chapin Carpenter, Shut Up And Kiss  | 24                             | 23 |
| 16         | John Michael Montgomery, If You've Got L | 24                             | 22 |
| 17         | Little Texas, Kick A Little              | 23                             | 22 |
| 18         | Faith Hill, Take Me As I Am              | 23                             | 13 |
| 19         | John & Audrey Wiggins, Has Anybody Seen  | 23                             | 10 |
| 20         | Lari White, Now I Know                   | 23                             | 14 |
| 21         | Blackhawk, I Sure Can Smell The Rain     | 22                             | 34 |
| 22         | Clint Black, Untanglin' My Mind          | 21                             | 22 |
| 23         | Tanya Tucker, You Just Watch Me          | 20                             | 12 |
| 24         | Randy Travis, This Is Me                 | 20                             | 12 |
| 25         | John Anderson, Country 'til I Die        | 19                             | 18 |
| 26         | Brooks & Dunn, She's Not The Cheatin' Ki | 18                             | 28 |
| 27         | Clint Black, Untanglin' My Mind          | 18                             | 28 |
| 28         | Hal Ketchum, That's What I Get           | 17                             | 17 |
| 29         | Toby Keith, Who's That Man               | 16                             | 21 |
| 30         | Aaron Tippin, I Got It Honest            | 16                             | 19 |

| WSSL       |  | PD: Loyd Ford<br>MD: John Crenshaw |    |
|------------|--|------------------------------------|----|
| Greenville |  | TW                                 | LW |
| 1          | Pam Tillis, When You Walk In The Room    | 40                                 | 35 |
| 2          | Brooks & Dunn, She's Not The Cheatin' Ki | 37                                 | 40 |
| 3          | Neal McCoy, The City Put The Country Bac | 37                                 | 34 |
| 4          | Alan Jackson, Livin' On Love             | 36                                 | 28 |
| 5          | Sammy Kershaw, Third Rate Romance        | 35                                 | 37 |
| 6          | Collin Raye, Man Of My Word              | 34                                 | 33 |
| 7          | Tracy Byrd, Watermelon Crawl             | 32                                 | 38 |
| 8          | Patty Loveless, I Try To Think About Ev  | 29                                 | 36 |
| 9          | Faith Hill, Take Me As I Am              | 27                                 | 23 |
| 10         | Blackhawk, I Sure Can Smell The Rain     | 25                                 | 20 |
| 11         | Garth Brooks, Callin' Baton Rouge        | 24                                 | 35 |
| 12         | Ken Mellons, Jukebox Junkie              | 24                                 | 21 |
| 13         | Little Texas, Kick A Little              | 24                                 | 13 |
| 14         | Mary Chapin Carpenter, Shut Up And Kiss  | 24                                 | 23 |
| 15         | The Tractors, Baby Likes To Rock It      | 23                                 | 21 |
| 16         | Vince Gill, When Love Finds You          | 23                                 | 14 |
| 17         | Clay Walker, If I Could Make A Living    | 22                                 | 21 |
| 18         | Tanya Tucker, You Just Watch Me          | 22                                 | 25 |
| 19         | Rhett Akins, What They're Talking About  | 22                                 | 18 |
| 20         | John & Audrey Wiggins, Has Anybody Seen  | 22                                 | 23 |
| 21         | David Ball, When The Thought Of You Catc | 21                                 | 18 |
| 22         | Tim McGraw, Down On The Farm             | 21                                 | 18 |
| 23         | Vince Gill, What The Cowgirls Do         | 20                                 | 17 |
| 24         | John Michael Montgomery, If You've Got L | 20                                 | 22 |
| 25         | George Strait, The Big One               | 19                                 | 20 |
| 26         | Joe Diffie, Third Rock From The Sun      | 19                                 | 9  |
| 27         | John Berry, Whisper My Name              | 19                                 | 8  |
| 28         | Tracy Lawrence, I See It Now             | 18                                 | 24 |
| 29         | Randy Travis, Whisper My Name            | 18                                 | 16 |
| 30         | Alabama, We Can't Love Like This Anymor  | 18                                 | 14 |

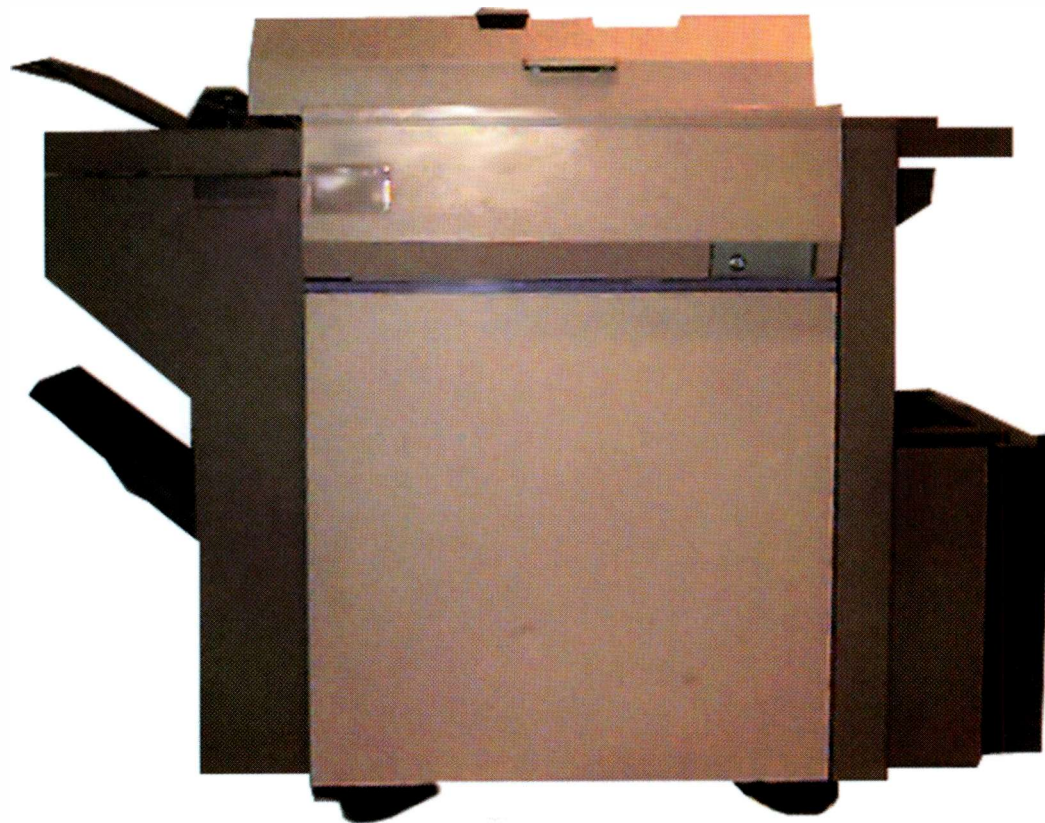
| WSIX      |  | PD/MD: Doug Baker |    |
|-----------|--|-------------------|----|
| Nashville |  | TW                | LW |
| 1         | Alan Jackson, Livin' On Love             | 38                | 37 |
| 2         | Mary Chapin Carpenter, Shut Up And Kiss  | 38                | 36 |
| 3         | John Michael Montgomery, If You've Got L | 37                | 37 |
| 4         | Clint Black, Untanglin' My Mind          | 35                | 24 |
| 5         | Tracy Lawrence, I See It Now             | 34                | 25 |
| 6         | Blackhawk, I Sure Can Smell The Rain     | 34                | 32 |
| 7         | Sammy Kershaw, Third Rate Romance        | 34                | 36 |
| 8         | Pam Tillis, When You Walk In The Room    | 32                | 35 |
| 9         | Collin Raye, Man Of My Word              | 30                | 33 |
| 10        | Brooks & Dunn, She's Not The Cheatin' Ki | 30                | 31 |
| 11        | Clay Walker, If I Could Make A Living    | 28                | 23 |
| 12        | George Strait, The Big One               | 27                | 29 |
| 13        | Ken Mellons, Jukebox Junkie              | 26                | 23 |
| 14        | Vince Gill, When Love Finds You          | 26                | 25 |
| 15        | Tracy Byrd, Watermelon Crawl             | 25                | 26 |
| 16        | The Tractors, Baby Likes To Rock It      | 24                | 20 |
| 17        | John & Audrey Wiggins, Has Anybody Seen  | 24                | 24 |
| 18        | Patty Loveless, I Try To Think About Ev  | 24                | 34 |
| 19        | Randy Travis, This Is Me                 | 24                | 17 |
| 20        | Little Texas, Kick A Little              | 22                | 21 |
| 21        | Faith Hill, Take Me As I Am              | 21                | 20 |
| 22        | David Ball, When The Thought Of You Catc | 21                | 22 |
| 23        | Tanya Tucker, You Just Watch Me          | 21                | 20 |
| 24        | Lari White, Now I Know                   | 21                | 19 |
| 25        | Joe Diffie, Pickup Man                   | 21                | 7  |
| 26        | Neal McCoy, The City Put The Country Bac | 20                | 18 |
| 27        | John Berry, You And Your Girl            | 20                | 5  |
| 28        | Garth Brooks, Callin' Baton Rouge        | 18                | 35 |
| 29        | Hal Ketchum, That's What I Get           | 18                | 29 |
| 30        | Mark Collie, Hard Lovin' Woman           | 18                | 15 |

| WKIS  |  | PD: Bob McKay<br>MD: Darlene Evans |    |
|-------|--|------------------------------------|----|
| Miami |  | TW                                 | LW |
| 1     | Alan Jackson, Livin' On Love             | 38                                 | 36 |
| 2     | Pam Tillis, When You Walk In The Room    | 38                                 | 38 |
| 3     | Neal McCoy, The City Put The Country Bac | 36                                 | 35 |
| 4     | Garth Brooks, Callin' Baton Rouge        | 35                                 | 39 |
| 5     | Collin Raye, Man Of My Word              | 35                                 | 28 |
| 6     | Blackhawk, I Sure Can Smell The Rain     | 31                                 | 17 |
| 7     | Sammy Kershaw, Third Rate Romance        | 30                                 | 19 |
| 8     | Mary Chapin Carpenter, Shut Up And Kiss  | 27                                 | 17 |
| 9     | Tracy Lawrence, I See It Now             | 24                                 | 14 |
| 10    | Patty Loveless, I Try To Think About Ev  | 19                                 | 37 |
| 11    | Clay Walker, If I Could Make A Living    | 19                                 | 18 |
| 12    | Tracy Byrd, Watermelon Crawl             | 19                                 | 19 |
| 13    | Ken Mellons, Jukebox Junkie              | 19                                 | 13 |
| 14    | Brooks & Dunn, She's Not The Cheatin' Ki | 18                                 | 14 |
| 15    | Clint Black, Untanglin' My Mind          | 18                                 | 12 |
| 16    | John & Audrey Wiggins, Has Anybody Seen  | 17                                 | 10 |
| 17    | John Michael Montgomery, If You've Got L | 16                                 | 14 |
| 18    | Clay Walker, If I Could Make A Living    | 16                                 | 16 |
| 19    | Kathy Mattea, Nobody's Gonna Rain On Our | 14                                 | 35 |
| 20    | Vince Gill, When Love Finds You          | 13                                 | 0  |
| 21    | Faith Hill, Take Me As I Am              | 12                                 | 16 |
| 22    | Mark Chesnut, She Dreams                 | 12                                 | 36 |
| 23    | Alabama, We Can't Love Like This Anymor  | 12                                 | 12 |
| 24    | George Strait, The Big One               | 12                                 | 2  |
| 25    | Joe Diffie, Third Rock From The Sun      | 10                                 | 25 |
| 26    | Clay Walker, Dreaming With My Eyes Open  | 9                                  | 9  |
| 27    | Toby Keith, Who's That Man               | 9                                  | 15 |
| 28    | Sammy Kershaw, National Working Woman's  | 9                                  | 8  |
| 29    | Alabama, We Can't Love Like This Anymor  | 9                                  | 7  |
| 30    | Toby Keith, Wish I Didn't Know Now       | 9                                  | 6  |

| WTDR      |  | PD: Ron Ellis<br>MD: Alison West |    |
|-----------|--|----------------------------------|----|
| Charlotte |  | TW                               | LW |
| 1         | Alan Jackson, Livin' On Love             | 38                               | 31 |
| 2         | Blackhawk, I Sure Can Smell The Rain     | 36                               | 31 |
| 3         | Sammy Kershaw, Third Rate Romance        | 35                               | 33 |
| 4         | Pam Tillis, When You Walk In The Room    | 34                               | 33 |
| 5         | Brooks & Dunn, She's Not The Cheatin' Ki | 33                               | 33 |
| 6         | Alan Jackson, Livin' On Love             | 33                               | 36 |
| 7         | Tracy Byrd, Watermelon Crawl             | 32                               | 3  |



**THIS IS A DUPLICATING MACHINE.**





**THIS IS AN ORIGINAL.**



**WADE  
HAYES**

**OLD ENOUGH TO KNOW BETTER**

Written by Wade Hayes and Chick Rains  
Produced by Don Cook

**AIRPLAY DATE: OCTOBER 31**

COLUMBIA / DKC Music  
Music That's First... Music That Lasts





MONITOR POWER PLAYISTS

Playlists supplied by Broadcast Data Systems' Radio Track service. Stations selected from panel of leading broadcasters in 25 radio markets, electronically monitored 24 hours a day, 7 days a week. Songs ranked by number of plays in monitored week.

FOR WEEK ENDING OCTOBER 16, 1994

Table with 12 columns representing radio markets: WCLB, WDSY, WWYZ, WVLC, WESC, KFKF, WXBQ, KSSN, KXXY, WBCT, WGNA, WQDR, WNOE, WDRM, KNCI, WKXX, KWEN, KSOP, KCYY, WCMS, WGKX, WQIK, KASE, WYRK. Each column contains a list of songs and artists with their respective play counts.



# COUNTRY AIRPLAY

# MONITOR POWER PLAYISTS

Playlists supplied by Broadcast Data Systems' Radio Track service. Stations selected from panel of leading broadcasters in 125 radio markets, electronically monitored 24 hours a day, 7 days a week. Songs ranked by number of plays in monitored week.

FOR WEEK ENDING  
OCTOBER 16, 1994

| KKAT                                |    |  | WBEE                             |    |  | KEBC   |    |  | WMSI                        |    |  | WCOL  |    |  | WRKZ                 |    |  |
|-------------------------------------|----|--|----------------------------------|----|--|--|----|--|-----------------------------|----|--|---|----|--|----------------------|----|--|
| Salt Lake City PD/MD: Jim Mickelson |    |  | Rochester, NY PD/MD: Bob Barnett |    |  | Oklahoma City PD: Mike McCoy MD: Dave Dodson |    |  | Jackson PD/MD: Scott Mateer |    |  | Columbus, OH PD: Michael Cruz MD: John Crenshaw |    |  | Hershey MD: Dandalon |    |  |
| TW                                  | LW |  | TW                               | LW |  | TW   | LW |  | TW                          | LW |  | TW  | LW |  | TW                   | LW |  |
| 1                                   | 33 | Pam Tillis, When You Walk In The Room    | 1                                | 40 | Patty Loveless, I Try To Think About Ev  | 1  | 50 | Neal McCoy, The City Put The Country Bac | 1                           | 36 | Sammy Kershaw, Third Rate Romance        | 1   | 37 | Brooks & Dunn, She's Not The Cheatin' Ki | 1                    | 40 | Patty Loveless, I Try To Think About Ev  |
| 2                                   | 36 | Tracy Byrd, Watermelon Crawl             | 2                                | 38 | Alan Jackson, Livin' On Love             | 2  | 48 | Toby Keith, Who's That Man               | 2                           | 34 | Tracy Byrd, Watermelon Crawl             | 2   | 36 | Ken Mellons, Jukebox Junkie              | 2                    | 37 | Tracy Byrd, Watermelon Crawl             |
| 3                                   | 31 | Brooks & Dunn, She's Not The Cheatin' Ki | 3                                | 33 | Sammy Kershaw, Third Rate Romance        | 3  | 47 | Collin Raye, Man Of My Word              | 3                           | 33 | Neal McCoy, The City Put The Country Bac | 3   | 36 | Pam Tillis, When You Walk In The Room    | 3                    | 32 | Garth Brooks, Callin' Baton Rouge        |
| 4                                   | 30 | Neal McCoy, The City Put The Country Bac | 4                                | 32 | Mary Chapin Carpenter, Shut Up And Kiss  | 4  | 52 | Brooks & Dunn, She's Not The Cheatin' Ki | 4                           | 35 | Alan Jackson, Livin' On Love             | 4   | 35 | Collin Raye, Man Of My Word              | 4                    | 31 | Brooks & Dunn, She's Not The Cheatin' Ki |
| 5                                   | 30 | Patty Loveless, I Try To Think About Ev  | 5                                | 35 | Toby Keith, Who's That Man               | 5  | 46 | Little Texas, Kick A Little              | 5                           | 32 | Tracy Byrd, Watermelon Crawl             | 5   | 34 | Tracy Byrd, Watermelon Crawl             | 5                    | 34 | Alan Jackson, Livin' On Love             |
| 6                                   | 29 | Alan Jackson, Livin' On Love             | 6                                | 32 | Doug Stone, More Love                    | 6  | 49 | John Michael Montgomery, If You've Got L | 6                           | 36 | Little Texas, Kick A Little              | 6   | 38 | Little Texas, Kick A Little              | 6                    | 32 | Pam Tillis, When You Walk In The Room    |
| 7                                   | 29 | Garth Brooks, Callin' Baton Rouge        | 7                                | 34 | Brooks & Dunn, She's Not The Cheatin' Ki | 7  | 45 | Alan Jackson, Livin' On Love             | 7                           | 31 | Garth Brooks, Callin' Baton Rouge        | 7   | 32 | Garth Brooks, Callin' Baton Rouge        | 7                    | 32 | Neal McCoy, The City Put The Country Bac |
| 8                                   | 28 | Collin Raye, Man Of My Word              | 8                                | 32 | George Strait, The Man In Love With You  | 8  | 47 | Patty Loveless, I Try To Think About Ev  | 8                           | 30 | Brooks & Dunn, She's Not The Cheatin' Ki | 8   | 35 | Alan Jackson, Livin' On Love             | 8                    | 32 | Kathy Mattea, Nobody's Gonna Rain On Our |
| 9                                   | 27 | Kathy Mattea, Nobody's Gonna Rain On Our | 9                                | 35 | Little Texas, Kick A Little              | 9  | 49 | Pam Tillis, When You Walk In The Room    | 9                           | 32 | Mary Chapin Carpenter, Shut Up And Kiss  | 9   | 31 | George Strait, The Big One               | 9                    | 31 | Sammy Kershaw, Third Rate Romance        |
| 10                                  | 27 | Mary Chapin Carpenter, Shut Up And Kiss  | 10                               | 32 | Blackhawk, I Sure Can Smell The Rain     | 10   | 37 | George Strait, The Big One               | 10                          | 25 | George Strait, The Big One               | 10  | 30 | John Michael Montgomery, If You've Got L | 10                   | 30 | Blackhawk, I Sure Can Smell The Rain     |
| 11                                  | 25 | Clay Walker, If I Could Make A Living    | 11                               | 29 | Garth Brooks, Callin' Baton Rouge        | 11   | 33 | Sammy Kershaw, Third Rate Romance        | 11                          | 26 | Vince Gill, When Love Finds You          | 11  | 28 | Vince Gill, When Love Finds You          | 11                   | 28 | Ken Mellons, Jukebox Junkie              |
| 12                                  | 25 | Ken Mellons, Jukebox Junkie              | 12                               | 26 | Collin Raye, Man Of My Word              | 12   | 31 | The Tractors, Baby Likes To Rock It      | 12                          | 25 | Tracy Lawrence, I See It Now             | 12  | 26 | Sammy Kershaw, Third Rate Romance        | 12                   | 26 | Clay Walker, If I Could Make A Living    |
| 13                                  | 22 | George Strait, The Big One               | 13                               | 22 | Pam Tillis, When You Walk In The Room    | 13   | 34 | Tracy Byrd, Watermelon Crawl             | 13                          | 24 | The Tractors, Baby Likes To Rock It      | 13  | 27 | Tracy Lawrence, I See It Now             | 13                   | 26 | Tracy Lawrence, I See It Now             |
| 14                                  | 22 | Sammy Kershaw, Third Rate Romance        | 14                               | 25 | Neal McCoy, The City Put The Country Bac | 14   | 30 | Garth Brooks, Callin' Baton Rouge        | 14                          | 24 | Mary Chapin Carpenter, Shut Up And Kiss  | 14  | 25 | Blackhawk, I Sure Can Smell The Rain     | 14                   | 25 | Tracy Lawrence, I See It Now             |
| 15                                  | 22 | Lari White, Now I Know                   | 15                               | 23 | Ken Mellons, Jukebox Junkie              | 15   | 27 | John Michael Montgomery, If You've Got L | 15                          | 22 | Blackhawk, I Sure Can Smell The Rain     | 15  | 24 | Blackhawk, I Sure Can Smell The Rain     | 15                   | 24 | The Tractors, Baby Likes To Rock It      |
| 16                                  | 21 | David Ball, When The Thought Of You Catc | 16                               | 21 | George Strait, The Man In Love With You  | 16   | 26 | Ken Mellons, Jukebox Junkie              | 16                          | 22 | Clay Walker, If I Could Make A Living    | 16  | 23 | Vince Gill, When Love Finds You          | 16                   | 24 | Collin Raye, Man Of My Word              |
| 17                                  | 21 | Tim McGraw, Down On The Farm             | 17                               | 21 | John & Audrey Wiggins, Has Anybody Seen  | 17   | 27 | David Ball, When The Thought Of You Catc | 17                          | 21 | Tanya Tucker, You Just Watch Me          | 17  | 23 | John Michael Montgomery, If You've Got L | 17                   | 23 | John Michael Montgomery, If You've Got L |
| 18                                  | 21 | Toby Keith, Who's That Man               | 18                               | 20 | Kathy Mattea, Nobody's Gonna Rain On Our | 18   | 26 | John & Audrey Wiggins, Has Anybody Seen  | 18                          | 22 | John & Audrey Wiggins, Has Anybody Seen  | 18  | 22 | Alabama, We Can't Love Like This Anymor  | 18                   | 23 | Mark Chesnut, She Dreams                 |
| 19                                  | 20 | Little Texas, Kick A Little              | 19                               | 20 | Lari White, Now I Know                   | 19   | 27 | Lari White, Now I Know                   | 19                          | 22 | Alabama, We Can't Love Like This Anymor  | 19  | 22 | Alabama, We Can't Love Like This Anymor  | 19                   | 22 | Alabama, We Can't Love Like This Anymor  |
| 20                                  | 18 | Faith Hill, Take Me As I Am              | 20                               | 18 | Bryan White, Eugene You Genius           | 20   | 29 | Bryan White, Eugene You Genius           | 20                          | 22 | John & Audrey Wiggins, Has Anybody Seen  | 20  | 22 | John & Audrey Wiggins, Has Anybody Seen  | 20                   | 22 | John & Audrey Wiggins, Has Anybody Seen  |
| 21                                  | 18 | Vince Gill, When Love Finds You          | 21                               | 19 | Tracy Byrd, Watermelon Crawl             | 21   | 27 | Tracy Byrd, Watermelon Crawl             | 21                          | 22 | Clay Walker, If I Could Make A Living    | 21  | 22 | Clay Walker, If I Could Make A Living    | 21                   | 22 | Clay Walker, If I Could Make A Living    |
| 22                                  | 18 | John Michael Montgomery, If You've Got L | 22                               | 18 | Tracy Lawrence, I See It Now             | 22   | 27 | John Michael Montgomery, If You've Got L | 22                          | 22 | Clay Walker, If I Could Make A Living    | 22  | 22 | Clay Walker, If I Could Make A Living    | 22                   | 22 | Clay Walker, If I Could Make A Living    |
| 23                                  | 18 | Joe Diffie, Pickin' Man                  | 23                               | 19 | The Tractors, Baby Likes To Rock It      | 23   | 27 | Alabama, We Can't Love Like This Anymor  | 23                          | 22 | Clay Walker, If I Could Make A Living    | 23  | 22 | Clay Walker, If I Could Make A Living    | 23                   | 22 | Clay Walker, If I Could Make A Living    |
| 24                                  | 18 | Mark Collie, Hard Lovin' Small           | 24                               | 18 | John Berry, What's In It For Me          | 24   | 26 | Alabama, We Can't Love Like This Anymor  | 24                          | 22 | Clay Walker, If I Could Make A Living    | 24  | 22 | Clay Walker, If I Could Make A Living    | 24                   | 22 | Clay Walker, If I Could Make A Living    |
| 25                                  | 18 | Blackhawk, I Sure Can Smell The Rain     | 25                               | 15 | Joe Diffie, Third Rock From The Sun      | 25   | 26 | Alabama, We Can't Love Like This Anymor  | 25                          | 22 | Clay Walker, If I Could Make A Living    | 25  | 22 | Clay Walker, If I Could Make A Living    | 25                   | 22 | Clay Walker, If I Could Make A Living    |
| 26                                  | 17 | Trisha Yearwood, Xos's And Ooo's         | 26                               | 17 | Vince Gill, What The Cowgirls Do         | 26   | 26 | Alabama, We Can't Love Like This Anymor  | 26                          | 22 | Clay Walker, If I Could Make A Living    | 26  | 22 | Clay Walker, If I Could Make A Living    | 26                   | 22 | Clay Walker, If I Could Make A Living    |
| 27                                  | 17 | Alabama, We Can't Love Like This Anymor  | 27                               | 17 | Tracy Lawrence, I See It Now             | 27   | 26 | Alabama, We Can't Love Like This Anymor  | 27                          | 22 | Clay Walker, If I Could Make A Living    | 27  | 22 | Clay Walker, If I Could Make A Living    | 27                   | 22 | Clay Walker, If I Could Make A Living    |
| 28                                  | 17 | Joe Diffie, Third Rock From The Sun      | 28                               | 17 | Tanya Tucker, You Just Watch Me          | 28   | 18 | Alabama, We Can't Love Like This Anymor  | 28                          | 22 | Clay Walker, If I Could Make A Living    | 28  | 22 | Clay Walker, If I Could Make A Living    | 28                   | 22 | Clay Walker, If I Could Make A Living    |
| 29                                  | 16 | George Strait, The Big One               | 29                               | 17 | David Ball, Thinkin' Problem             | 29   | 18 | Alabama, We Can't Love Like This Anymor  | 29                          | 22 | Clay Walker, If I Could Make A Living    | 29  | 22 | Clay Walker, If I Could Make A Living    | 29                   | 22 | Clay Walker, If I Could Make A Living    |
| 30                                  | 16 | John Michael Montgomery, Be My Baby Toni | 30                               | 16 | Trisha Yearwood, Xos's And Ooo's         | 30   | 17 | Alabama, We Can't Love Like This Anymor  | 30                          | 22 | Clay Walker, If I Could Make A Living    | 30  | 22 | Clay Walker, If I Could Make A Living    | 30                   | 22 | Clay Walker, If I Could Make A Living    |



# Monitor SONG ACTIVITY REPORTS

For Week Ending October 16, 1994



## COUNTRY

| Total Plays/Gain                          |         |    |    | Total Plays/Gain                          |         |    |    | Total Plays/Gain                          |         |    |    | Total Plays/Gain                          |         |    |    | Total Plays/Gain                          |         |    |    | Total Plays/Gain                          |         |    |    |      |         |    |    |
|---|---------|----|----|---|---------|----|----|---|---------|----|----|---|---------|----|----|---|---------|----|----|---|---------|----|----|------|---------|----|----|
| RHETT AKINS 832/207                       |         |    |    | ALABAMA 2578/219                          |         |    |    | JOHN ANDERSON 1288/115                    |         |    |    | DAVID BALL 2676/225                       |         |    |    | CLINT BLACK 2645/142                      |         |    |    | BLACKHAWK 3174/239                        |         |    |    |      |         |    |    |
| What They're Talking About (Decca)        |         |    |    | We Can't Love Like This... (RCA)          |         |    |    | Country 'Til I Die (BNA)                  |         |    |    | When The Thought Of You... (Warner Bros.) |         |    |    | Untanglin' My Mind (RCA)                  |         |    |    | I Sure Can Smell The Rain (Arista)        |         |    |    |      |         |    |    |
| Total Stations: 102 Position On Chart: 52 |         |    |    | Total Stations: 136 Position On Chart: 23 |         |    |    | Total Stations: 110 Position On Chart: 39 |         |    |    | Total Stations: 134 Position On Chart: 20 |         |    |    | Total Stations: 136 Position On Chart: 21 |         |    |    | Total Stations: 135 Position On Chart: 14 |         |    |    |      |         |    |    |
| City                                      | Station | PL | LG | City                                      | Station | PL | LG | City                                      | Station | PL | LG | City                                      | Station | PL | LG | City                                      | Station | PL | LG | City                                      | Station | PL | LG | City | Station | PL | LG |
| New York                                  | CMT     | 15 | 15 | New York                                  | CMT     | 15 | 14 | New York                                  | CMT     | 15 | 14 | New York                                  | CMT     | 15 | 14 | New York                                  | CMT     | 15 | 14 | New York                                  | CMT     | 15 | 14 |      |         |    |    |
| Chicago                                   | WYNY    | 3  | 3  | Chicago                                   | WYNY    | 3  | 3  | Chicago                                   | WYNY    | 3  | 3  | Chicago                                   | WYNY    | 3  | 3  | Chicago                                   | WYNY    | 3  | 3  | Chicago                                   | WYNY    | 3  | 3  |      |         |    |    |
| San Fran.                                 | KZLA    | 6  | 6  | San Fran.                                 | KZLA    | 6  | 6  | San Fran.                                 | KZLA    | 6  | 6  | San Fran.                                 | KZLA    | 6  | 6  | San Fran.                                 | KZLA    | 6  | 6  | San Fran.                                 | KZLA    | 6  | 6  |      |         |    |    |
| Phila.                                    | WUSN    | 1  | 1  | Phila.                                    | WUSN    | 1  | 1  | Phila.                                    | WUSN    | 1  | 1  | Phila.                                    | WUSN    | 1  | 1  | Phila.                                    | WUSN    | 1  | 1  | Phila.                                    | WUSN    | 1  | 1  |      |         |    |    |
| Detroit                                   | WSHU    | 7  | 7  | Detroit                                   | WSHU    | 7  | 7  | Detroit                                   | WSHU    | 7  | 7  | Detroit                                   | WSHU    | 7  | 7  | Detroit                                   | WSHU    | 7  | 7  | Detroit                                   | WSHU    | 7  | 7  |      |         |    |    |
| Dallas                                    | KPLX    | 15 | 14 | Dallas                                    | KPLX    | 15 | 14 | Dallas                                    | KPLX    | 15 | 14 | Dallas                                    | KPLX    | 15 | 14 | Dallas                                    | KPLX    | 15 | 14 | Dallas                                    | KPLX    | 15 | 14 |      |         |    |    |
| Wash., DC                                 | WFLS    | 15 | 13 | Wash., DC                                 | WFLS    | 15 | 13 | Wash., DC                                 | WFLS    | 15 | 13 | Wash., DC                                 | WFLS    | 15 | 13 | Wash., DC                                 | WFLS    | 15 | 13 | Wash., DC                                 | WFLS    | 15 | 13 |      |         |    |    |
| Boston                                    | WMBZ    | 1  | 1  | Boston                                    | WMBZ    | 1  | 1  | Boston                                    | WMBZ    | 1  | 1  | Boston                                    | WMBZ    | 1  | 1  | Boston                                    | WMBZ    | 1  | 1  | Boston                                    | WMBZ    | 1  | 1  |      |         |    |    |
| Houston                                   | KIKK    | 14 | 11 | Houston                                   | KIKK    | 14 | 11 | Houston                                   | KIKK    | 14 | 11 | Houston                                   | KIKK    | 14 | 11 | Houston                                   | KIKK    | 14 | 11 | Houston                                   | KIKK    | 14 | 11 |      |         |    |    |
| Miami                                     | WKIS    | 1  | 1  | Miami                                     | WKIS    | 1  | 1  | Miami                                     | WKIS    | 1  | 1  | Miami                                     | WKIS    | 1  | 1  | Miami                                     | WKIS    | 1  | 1  | Miami                                     | WKIS    | 1  | 1  |      |         |    |    |
| Atlanta                                   | WKHX    | 1  | 1  | Atlanta                                   | WKHX    | 1  | 1  | Atlanta                                   | WKHX    | 1  | 1  | Atlanta                                   | WKHX    | 1  | 1  | Atlanta                                   | WKHX    | 1  | 1  | Atlanta                                   | WKHX    | 1  | 1  |      |         |    |    |
| Seattle                                   | KRPM    | 10 | 10 | Seattle                                   | KRPM    | 10 | 10 | Seattle                                   | KRPM    | 10 | 10 | Seattle                                   | KRPM    | 10 | 10 | Seattle                                   | KRPM    | 10 | 10 | Seattle                                   | KRPM    | 10 | 10 |      |         |    |    |
| San Diego                                 | KSON    | 9  | 7  | San Diego                                 | KSON    | 9  | 7  | San Diego                                 | KSON    | 9  | 7  | San Diego                                 | KSON    | 9  | 7  | San Diego                                 | KSON    | 9  | 7  | San Diego                                 | KSON    | 9  | 7  |      |         |    |    |
| Minn.                                     | KEEY    | 20 | 17 | Minn.                                     | KEEY    | 20 | 17 | Minn.                                     | KEEY    | 20 | 17 | Minn.                                     | KEEY    | 20 | 17 | Minn.                                     | KEEY    | 20 | 17 | Minn.                                     | KEEY    | 20 | 17 |      |         |    |    |
| St. Louis                                 | WIL     | 17 | 15 | St. Louis                                 | WIL     | 17 | 15 | St. Louis                                 | WIL     | 17 | 15 | St. Louis                                 | WIL     | 17 | 15 | St. Louis                                 | WIL     | 17 | 15 | St. Louis                                 | WIL     | 17 | 15 |      |         |    |    |
| Balt.                                     | WPDC    | 26 | 26 | Balt.                                     | WPDC    | 26 | 26 | Balt.                                     | WPDC    | 26 | 26 | Balt.                                     | WPDC    | 26 | 26 | Balt.                                     | WPDC    | 26 | 26 | Balt.                                     | WPDC    | 26 | 26 |      |         |    |    |
| Pitts.                                    | WDSY    | 2  | 2  | Pitts.                                    | WDSY    | 2  | 2  | Pitts.                                    | WDSY    | 2  | 2  | Pitts.                                    | WDSY    | 2  | 2  | Pitts.                                    | WDSY    | 2  | 2  | Pitts.                                    | WDSY    | 2  | 2  |      |         |    |    |
| Phoenix                                   | KMLE    | 13 | 12 | Phoenix                                   | KMLE    | 13 | 12 | Phoenix                                   | KMLE    | 13 | 12 | Phoenix                                   | KMLE    | 13 | 12 | Phoenix                                   | KMLE    | 13 | 12 | Phoenix                                   | KMLE    | 13 | 12 |      |         |    |    |
| Tampa                                     | WYKQ    | 17 | 15 | Tampa                                     | WYKQ    | 17 | 15 | Tampa                                     | WYKQ    | 17 | 15 | Tampa                                     | WYKQ    | 17 | 15 | Tampa                                     | WYKQ    | 17 | 15 | Tampa                                     | WYKQ    | 17 | 15 |      |         |    |    |
| Cleveland                                 | WGAR    | 26 | 23 | Cleveland                                 | WGAR    | 26 | 23 | Cleveland                                 | WGAR    | 26 | 23 | Cleveland                                 | WGAR    | 26 | 23 | Cleveland                                 | WGAR    | 26 | 23 | Cleveland                                 | WGAR    | 26 | 23 |      |         |    |    |
| Denver                                    | KYGO    | 4  | 3  | Denver                                    | KYGO    | 4  | 3  | Denver                                    | KYGO    | 4  | 3  | Denver                                    | KYGO    | 4  | 3  | Denver                                    | KYGO    | 4  | 3  | Denver                                    | KYGO    | 4  | 3  |      |         |    |    |
| Cincinnati                                | WCBE    | 26 | 22 | Cincinnati                                | WCBE    | 26 | 22 | Cincinnati                                | WCBE    | 26 | 22 | Cincinnati                                | WCBE    | 26 | 22 | Cincinnati                                | WCBE    | 26 | 22 | Cincinnati                                | WCBE    | 26 | 22 |      |         |    |    |
| Port., OR                                 | KUPL    | 6  | 10 | Port., OR                                 | KUPL    | 6  | 10 | Port., OR                                 | KUPL    | 6  | 10 | Port., OR                                 | KUPL    | 6  | 10 | Port., OR                                 | KUPL    | 6  | 10 | Port., OR                                 | KUPL    | 6  | 10 |      |         |    |    |
| Rivers.                                   | KRJJ    | 2  | 2  | Rivers.                                   | KRJJ    | 2  | 2  | Rivers.                                   | KRJJ    | 2  | 2  | Rivers.                                   | KRJJ    | 2  | 2  | Rivers.                                   | KRJJ    | 2  | 2  | Rivers.                                   | KRJJ    | 2  | 2  |      |         |    |    |
| Milwaukee                                 | WMIL    | 3  | 1  | Milwaukee                                 | WMIL    | 3  | 1  | Milwaukee                                 | WMIL    | 3  | 1  | Milwaukee                                 | WMIL    | 3  | 1  | Milwaukee                                 | WMIL    | 3  | 1  | Milwaukee                                 | WMIL    | 3  | 1  |      |         |    |    |
| Sacram.                                   | KRAC    | 15 | 6  | Sacram.                                   | KRAC    | 15 | 6  | Sacram.                                   | KRAC    | 15 | 6  | Sacram.                                   | KRAC    | 15 | 6  | Sacram.                                   | KRAC    | 15 | 6  | Sacram.                                   | KRAC    | 15 | 6  |      |         |    |    |
| Kan.City                                  | KFKF    | 2  | 1  | Kan.City                                  | KFKF    | 2  | 1  | Kan.City                                  | KFKF    | 2  | 1  | Kan.City                                  | KFKF    | 2  | 1  | Kan.City                                  | KFKF    | 2  | 1  | Kan.City                                  | KFKF    | 2  | 1  |      |         |    |    |
| San Jose                                  | KRTY    | 24 | 25 | San Jose                                  | KRTY    | 24 | 25 | San Jose                                  | KRTY    | 24 | 25 | San Jose                                  | KRTY    | 24 | 25 | San Jose                                  | KRTY    | 24 | 25 | San Jose                                  | KRTY    | 24 | 25 |      |         |    |    |
| Spokane                                   | KDRK    | 16 | 17 | Spokane                                   | KDRK    | 16 | 17 | Spokane                                   | KDRK    | 16 | 17 | Spokane                                   | KDRK    | 16 | 17 | Spokane                                   | KDRK    | 16 | 17 | Spokane                                   | KDRK    | 16 | 17 |      |         |    |    |
| Portland                                  | WCBE    | 26 | 22 | Portland                                  | WCBE    | 26 | 22 | Portland                                  | WCBE    | 26 | 22 | Portland                                  | WCBE    | 26 | 22 | Portland                                  | WCBE    | 26 | 22 | Portland                                  | WCBE    | 26 | 22 |      |         |    |    |
| Norfolk                                   | WGHS    | 26 | 23 | Norfolk                                   | WGHS    | 26 | 23 | Norfolk                                   | WGHS    | 26 | 23 | Norfolk                                   | WGHS    | 26 | 23 | Norfolk                                   | WGHS    | 26 | 23 | Norfolk                                   | WGHS    | 26 | 23 |      |         |    |    |
| Colum., OH                                | WCOL    | 20 | 19 | Colum., OH                                | WCOL    | 20 | 19 | Colum., OH                                | WCOL    | 20 | 19 | Colum., OH                                | WCOL    | 20 | 19 | Colum., OH                                | WCOL    | 20 | 19 | Colum., OH                                | WCOL    | 20 | 19 |      |         |    |    |
| San Antonio                               | KAJA    | 8  | 2  | San Antonio                               | KAJA    | 8  | 2  | San Antonio                               | KAJA    | 8  | 2  | San Antonio                               | KAJA    | 8  | 2  | San Antonio                               | KAJA    | 8  | 2  | San Antonio                               | KAJA    | 8  | 2  |      |         |    |    |
| Salt Lake                                 | KCAT    | 17 | 14 | Salt Lake                                 | KCAT    | 17 | 14 | Salt Lake                                 | KCAT    | 17 | 14 | Salt Lake                                 | KCAT    | 17 | 14 | Salt Lake                                 | KCAT    | 17 | 14 | Salt Lake                                 | KCAT    | 17 | 14 |      |         |    |    |
| Indian.                                   | WFMS    | 1  | 1  | Indian.                                   | WFMS    | 1  | 1  | Indian.                                   | WFMS    | 1  | 1  | Indian.                                   | WFMS    | 1  | 1  | Indian.                                   | WFMS    | 1  | 1  | Indian.                                   | WFMS    | 1  | 1  |      |         |    |    |
| Charl., NC                                | WTDI    | 5  | 1  | Charl., NC                                | WTDI    | 5  | 1  | Charl., NC                                | WTDI    | 5  | 1  | Charl., NC                                | WTDI    | 5  | 1  | Charl., NC                                | WTDI    | 5  | 1  | Charl., NC                                | WTDI    | 5  | 1  |      |         |    |    |
| New Or.                                   | WNDE    | 7  | 7  | New Or.                                   | WNDE    | 7  | 7  | New Or.                                   | WNDE    | 7  | 7  | New Or.                                   | WNDE    | 7  | 7  | New Or.                                   | WNDE    | 7  | 7  | New Or.                                   | WNDE    | 7  | 7  |      |         |    |    |
| Buffalo                                   | WYRK    | 1  | 1  | Buffalo                                   | WYRK    | 1  | 1  | Buffalo                                   | WYRK    | 1  | 1  | Buffalo                                   | WYRK    | 1  | 1  | Buffalo                                   | WYRK    | 1  | 1  | Buffalo                                   | WYRK    | 1  | 1  |      |         |    |    |
| Orlando                                   | WCFB    | 1  | 1  | Orlando                                   | WCFB    | 1  | 1  | Orlando                                   | WCFB    | 1  | 1  | Orlando                                   | WCFB    | 1  | 1  | Orlando                                   | WCFB    | 1  | 1  | Orlando                                   | WCFB    | 1  | 1  |      |         |    |    |
| Hartford                                  | WYVZ    | 14 | 10 | Hartford                                  | WYVZ    | 14 | 10 | Hartford                                  | WYVZ    | 14 | 10 | Hartford                                  | WYVZ    | 14 | 10 | Hartford                                  | WYVZ    | 14 | 10 | Hartford                                  | WYVZ    | 14 | 10 |      |         |    |    |
| Greensb.                                  | WTOI    | 1  | 1  | Greensb.                                  | WTOI    | 1  | 1  | Greensb.                                  | WTOI    | 1  | 1  | Greensb.                                  | WTOI    | 1  | 1  | Greensb.                                  | WTOI    | 1  | 1  | Greensb.                                  | WTOI    | 1  | 1  |      |         |    |    |
| Memphis                                   | WGKX    | 15 | 14 | Memphis                                   | WGKX    | 15 | 14 | Memphis                                   | WGKX    | 15 | 14 | Memphis                                   | WGKX    | 15 | 14 | Memphis                                   | WGKX    | 15 | 14 | Memphis                                   | WGKX    | 15 | 14 |      |         |    |    |
| Rochest.                                  | WBEE    | 1  | 1  | Rochest.                                  | WBEE    | 1  | 1  | Rochest.                                  | WBEE    | 1  | 1  | Rochest.                                  | WBEE    | 1  | 1  | Rochest.                                  | WBEE    | 1  | 1  | Rochest.                                  | WBEE    | 1  | 1  |      |         |    |    |
| Nashv.                                    | WSIX    | 12 | 17 | Nashv.                                    | WSIX    | 12 | 17 | Nashv.                                    | WSIX    | 12 | 17 | Nashv.                                    | WSIX    | 12 | 17 | Nashv.                                    | WSIX    | 12 | 17 | Nashv.                                    | WSIX    | 12 | 17 |      |         |    |    |
| Dayton                                    | WHKO    | 20 | 20 | Dayton                                    | WHKO    | 20 | 20 | Dayton                                    | WHKO    | 20 | 20 | Dayton                                    | WHKO    | 20 | 20 | Dayton                                    | WHKO    | 20 | 20 | Dayton                                    | WHKO    | 20 | 20 |      |         |    |    |
| W.P. Beach                                | WIRK    | 1  | 1  | W.P. Beach                                | WIRK    | 1  | 1  | W.P. Beach                                | WIRK    | 1  | 1  | W.P. Beach                                | WIRK    | 1  | 1  | W.P. Beach                                | WIRK    | 1  | 1  | W.P. Beach                                | WIRK    | 1  | 1  |      |         |    |    |

| Total Stations: 136 Position On Chart: 4 |         |    |    | Total Stations: 135 Position On Chart: 9 |         |    |    | Total Stations: 104 Position On Chart: 45 |         |    |    | Total Stations: 115 Position On Chart: 36 |         |    |    | Total Stations: 118 Position On Chart: 40 |         |    |    | Total Stations: 133 Position On Chart: 27 |         |    |    |      |         |    |    |
|--|---------|----|----|--|---------|----|----|---|---------|----|----|---|---------|----|----|---|---------|----|----|---|---------|----|----|------|---------|----|----|
| City                                     | Station | PL | LG | City                                     | Station | PL | LG | City                                      | Station | PL | LG | City                                      | Station | PL | LG | City                                      | Station | PL | LG | City                                      | Station | PL | LG | City | Station | PL | LG |
| New York                                 | CMT     | 28 | 33 | New York                                 | CMT     | 27 | 22 | New York                                  | CMT     | 17 | 17 | New York                                  | CMT     | 37 | 12 | New York                                  | CMT     | 16 | 15 | New York                                  | CMT     | 21 | 22 |      |         |    |    |
| Chicago                                  | WYNY    | 5  | 7  | Chicago                                  | WYNY    | 7  | 4  | Chicago                                   | WYNY    | 7  | 4  | Chicago                                   | WYNY    | 7  | 4  | Chicago                                   | WYNY    | 7  | 4  | Chicago                                   | WYNY    | 7  | 4  |      |         |    |    |
| San Fran.                                | KZLA    | 17 | 13 | San Fran.                                | KZLA    | 17 | 13 | San Fran.                                 | KZLA    | 17 | 13 | San Fran.                                 | KZLA    | 17 | 13 | San Fran.                                 | KZLA    | 17 | 13 | San Fran.                                 | KZLA    | 17 | 13 |      |         |    |    |
| Phila.                                   | WUSN    | 1  | 1  | Phila.                                   | WUSN    | 1  | 1  | Phila.                                    | WUSN    | 1  | 1  | Phila.                                    | WUSN    | 1  | 1  | Phila.                                    | WUSN    | 1  | 1  | Phila.                                    | WUSN    | 1  | 1  |      |         |    |    |
| Detroit                                  | WSHU    | 7  | 7  | Detroit                                  | WSHU    | 7  | 7  | Detroit                                   | WSHU    | 7  | 7  | Detroit                                   | WSHU    | 7  | 7  | Detroit                                   | WSHU    | 7  | 7  | Detroit                                   | WSHU    | 7  | 7  |      |         |    |    |
| Dallas                                   | KPLX    | 15 | 14 | Dallas                                   | KPLX    | 15 | 14 | Dallas                                    | KPLX    | 15 | 14 | Dallas                                    | KPLX    | 15 | 14 | Dallas                                    | KPLX    | 15 | 14 | Dallas                                    | KPLX    | 15 | 14 |      |         |    |    |
| Wash., DC                                | WFLS    | 15 | 13 | Wash., DC                                | WFLS    | 15 | 13 | Wash., DC                                 | WFLS    | 15 | 13 | Wash., DC                                 | WFLS    | 15 | 13 | Wash., DC                                 | WFLS    | 15 | 13 | Wash., DC                                 | WFLS    | 15 | 13 |      |         |    |    |
| Boston                                   | WMBZ    | 1  | 1  | Boston                                   | WMBZ    | 1  | 1  | Boston                                    | WMBZ    | 1  | 1  | Boston                                    | WMBZ    | 1  | 1  | Boston                                    | WMBZ    | 1  | 1  | Boston                                    | WMBZ    | 1  | 1  |      |         |    |    |
| Houston                                  | KIKK    | 14 | 11 | Houston                                  | KIKK    | 14 | 11 | Houston                                   | KIKK    | 14 | 11 | Houston                                   | KIKK    | 14 | 11 | Houston                                   | KIKK    | 14 | 11 | Houston                                   | KIKK    | 14 | 11 |      |         |    |    |
| Miami                                    | WKIS    | 1  | 1  | Miami                                    | WKIS    | 1  | 1  | Miami                                     | WKIS    | 1  | 1  | Miami                                     | WKIS    | 1  | 1  | Miami                                     | WKIS    | 1  | 1  | Miami                                     | WKIS    | 1  | 1  |      |         |    |    |
| Atlanta                                  | WKHX    | 1  | 1  | Atlanta                                  | WKHX    | 1  | 1  | Atlanta                                   | WKHX    | 1  | 1  | Atlanta                                   | WKHX    | 1  | 1  | Atlanta                                   | WKHX    | 1  | 1  | Atlanta                                   | WKHX    | 1  | 1  |      |         |    |    |
| Seattle                                  | KRPM    | 10 | 10 | Seattle                                  | KRPM    | 10 | 10 | Seattle                                   | KRPM    | 10 | 10 | Seattle                                   | KRPM    | 10 | 10 | Seattle                                   | KRPM    | 10 | 10 | Seattle                                   | KRPM    | 10 | 10 |      |         |    |    |
| San Diego                                | KSON    | 9  | 7  | San Diego                                | KSON    | 9  | 7  | San Diego                                 | KSON    | 9  | 7  | San Diego                                 | KSON    | 9  | 7  | San Diego                                 | KSON    | 9  | 7  | San Diego                                 | KSON    | 9  | 7  |      |         |    |    |
| Minn.                                    | KEEY    | 20 | 17 | Minn.                                    | KEEY    | 20 | 17 | Minn.                                     | KEEY    | 20 | 17 | Minn.                                     | KEEY    | 20 | 17 | Minn.                                     | KEEY    | 20 | 17 | Minn.                                     | KEEY    | 20 | 17 |      |         |    |    |
| St. Louis                                | WIL     | 17 | 15 | St. Louis                                | WIL     | 17 | 15 | St. Louis                                 | WIL     | 17 | 15 | St. Louis                                 | WIL     | 17 | 15 | St. Louis                                 | WIL     | 17 | 15 | St. Louis                                 | WIL     | 17 | 15 |      |         |    |    |
| Balt.                                    | WPDC    | 26 | 26 | Balt.                                    | WPDC    | 26 | 26 | Balt.                                     | WPDC    | 26 | 26 | Balt.                                     | WPDC    | 26 | 26 | Balt.                                     | WPDC    | 26 | 26 | Balt.                                     | WPDC    | 26 | 26 |      |         |    |    |
| Pitts.                                   | WDSY    | 2  | 2  | Pitts.                                   | WDSY    | 2  | 2  | Pitts.                                    | WDSY    | 2  | 2  | Pitts.                                    | WDSY    | 2  | 2  | Pitts.                                    | WDSY    | 2  | 2  | Pitts.                                    | WDSY    | 2  | 2  |      |         |    |    |
| Phoenix                                  | KMLE    | 13 | 12 | Phoenix                                  | KMLE    | 13 | 12 | Phoenix                                   | KMLE    |    |    |   |         |    |    |   |         |    |    |   |         |    |    |      |         |    |    |



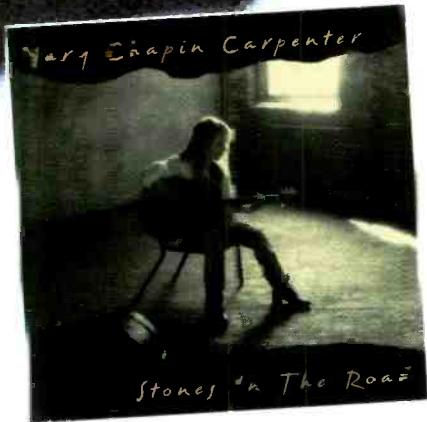
# MC<sup>2</sup> = 1000<sup>2</sup>

\* Over A  
Million Units  
Shipped

\* Over 20,000  
BDS Detections

\* 85,000 Units  
First Week Sales

\* #1 Country  
Album Debut



## Country Radio Made It Happen!

Thanks for Your Continued Support  
Mary Chapin Carpenter and Columbia Nashville

COLUMBIA / NASHVILLE  
MUSIC THAT'S FIRST... MUSIC THAT LASTS

Studio One Artists















Major Label  
Major Artist  
Major Hit

Polydor Nashville

CLINTON  
GREGORY  
G

"The Gulf and The Shell"

Produced by Harold Shedd and Ed Seay

ADD DATE: OCTOBER 31





# Monitor COUNTRY AIRPLAY Broadcast Data Systems DETECTIONS

OCTOBER 10-16, 1994

Compiled from a national sample of airplay supplied by Broadcast Data Systems' Radio Track service to Country Airplay Monitor. 136 country stations are electronically monitored 24 hours a day, 7 days a week. Songs ranked by number of detections. ©1994, Billboard/BPI Communications.

| THIS WEEK                   | LAST WEEK | WKS. ON CHART | TITLE/LABEL/DISTRIBUTING LABEL                          | ARTIST                  | DETECTIONS |      |
|-----------------------------|-----------|---------------|---|-------------------------|------------|------|
|                             |           |               |   |                         | TW         | LW   |
| <b>★ ★ ★ NO. 1 ★ ★ ★</b>    |           |               |   |                         |            |      |
| 1                           | 6         | 9             | LIVIN' ON LOVE ARISTA [1 week at No. 1]                 | ALAN JACKSON            | 4497       | 4131 |
| 2                           | 4         | 13            | WHEN YOU WALK IN THE ROOM ARISTA                        | PAM TILLIS              | 4466       | 4193 |
| 3                           | 1         | 10            | SHE'S NOT THE CHEATIN' KIND ARISTA                      | BROOKS & DUNN           | 4338       | 4590 |
| 4                           | 5         | 12            | WATERMELON CRAWL MCA                                    | TRACY BYRD              | 4243       | 4167 |
| 5                           | 8         | 10            | THIRD RATE ROMANCE MERCURY                              | SAMMY KERSHAW           | 4229       | 3700 |
| 6                           | 2         | 17            | CALLIN' BATON ROUGE LIBERTY                             | GARTH BROOKS            | 4011       | 4337 |
| 7                           | 3         | 14            | I TRY TO THINK ABOUT ELVIS EPIC                         | PATTY LOVELESS          | 3909       | 4230 |
| 8                           | 11        | 13            | THE CITY PUT THE COUNTRY BACK IN ME ATLANTIC            | NEAL MCCOY              | 3855       | 3455 |
| 9                           | 12        | 8             | SHUT UP AND KISS ME COLUMBIA                            | MARY CHAPIN CARPENTER   | 3833       | 3451 |
| 10                          | 9         | 13            | MAN OF MY WORD EPIC                                     | COLLIN RAYE             | 3754       | 3559 |
| 11                          | 15        | 8             | I SEE IT NOW ATLANTIC                                   | TRACY LAWRENCE          | 3444       | 3146 |
| 12                          | 17        | 6             | IF I COULD MAKE A LIVING GIANT                          | CLAY WALKER             | 3354       | 3046 |
| 13                          | 14        | 10            | KICK A LITTLE WARNER BROS.                              | LITTLE TEXAS            | 3314       | 3177 |
| 14                          | 18        | 11            | I SURE CAN SMELL THE RAIN ARISTA                        | BLACKHAWK               | 3174       | 2935 |
| 15                          | 19        | 14            | JUKEBOX JUNKIE EPIC                                     | KEN MELLONS             | 3148       | 2879 |
| 16                          | 10        | 14            | WHO'S THAT MAN POLYDOR                                  | TOBY KEITH              | 3055       | 3534 |
| 17                          | 20        | 6             | IF YOU'VE GOT LOVE ATLANTIC                             | JOHN MICHAEL MONTGOMERY | 2992       | 2692 |
| <b>★ ★ ★ AIRPOWER ★ ★ ★</b> |           |               |   |                         |            |      |
| 18                          | 25        | 4             | THE BIG ONE MCA   | GEORGE STRAIT           | 2988       | 2452 |
| 19                          | 22        | 10            | BABY LIKES TO ROCK IT ARISTA                            | THE TRACTORS            | 2717       | 2592 |
| <b>★ ★ ★ AIRPOWER ★ ★ ★</b> |           |               |   |                         |            |      |
| 20                          | 26        | 8             | WHEN THE THOUGHT OF YOU CATCHES UP WITH ME WARNER BROS. | DAVID BALL              | 2676       | 2451 |
| 21                          | 24        | 6             | UNTANGLIN' MY MIND RCA                                  | CLINT BLACK             | 2645       | 2503 |
| 22                          | 23        | 12            | HAS ANYBODY SEEN AMY MERCURY                            | JOHN & AUDREY WIGGINS   | 2617       | 2526 |
| <b>★ ★ ★ AIRPOWER ★ ★ ★</b> |           |               |   |                         |            |      |
| 23                          | 28        | 8             | WE CAN'T LOVE LIKE THIS ANYMORE RCA                     | ALABAMA                 | 2578       | 2359 |
| 24                          | 16        | 16            | DOWN ON THE FARM CURB                                   | TIM MCGRAW              | 2488       | 3061 |
| 25                          | 7         | 15            | SHE DREAMS DECCA  | MARK CHESNUTT           | 2434       | 3717 |
| 26                          | 32        | 6             | TAKE ME AS I AM WARNER BROS.                            | FAITH HILL              | 2307       | 1897 |
| 27                          | 35        | 3             | WHEN LOVE FINDS YOU MCA                                 | VINCE GILL              | 2300       | 1728 |
| 28                          | 13        | 15            | NOBODY'S GONNA RAIN ON OUR PARADE MERCURY               | KATHY MATTEA            | 2297       | 3206 |
| 29                          | 21        | 16            | THIRD ROCK FROM THE SUN EPIC                            | JOE DIFFIE              | 2172       | 2683 |
| 30                          | 29        | 17            | XXX'S AND OOO'S (AN AMERICAN GIRL) MCA                  | TRISHA YEARWOOD         | 2065       | 2166 |
| 31                          | 33        | 9             | NOW I KNOW RCA  | LARI WHITE              | 2020       | 1808 |
| 32                          | 36        | 7             | YOU JUST WATCH ME LIBERTY                               | TANYA TUCKER            | 1970       | 1636 |
| 33                          | 30        | 11            | WHERE THERE'S SMOKE ATLANTIC                            | ARCHER/PARK             | 1805       | 2015 |
| 34                          | 31        | 17            | WHAT THE COWGIRLS DO MCA                                | VINCE GILL              | 1594       | 1900 |
| 35                          | 46        | 5             | THERE GOES MY HEART MCA                                 | THE MAVERICKS           | 1400       | 1052 |
| 36                          | 56        | 2             | PICKUP MAN EPIC   | JOE DIFFIE              | 1400       | 579  |
| 37                          | 40        | 6             | THAT'S WHAT I GET (FOR LOSIN' YOU) CURB                 | HAL KETCHUM             | 1337       | 1250 |

| THIS WEEK                         | LAST WEEK | WKS. ON CHART | TITLE/LABEL/DISTRIBUTING LABEL               | ARTIST                            | DETECTIONS |      |
|-----------------------------------|-----------|---------------|--|-----------------------------------|------------|------|
|                                   |           |               |  |                                   | TW         | LW   |
| 38                                | 49        | 2             | THIS IS ME WARNER BROS.                      | RANDY TRAVIS                      | 1320       | 832  |
| 39                                | 42        | 5             | COUNTRY 'TIL I DIE BNA                       | JOHN ANDERSON                     | 1288       | 1173 |
| 40                                | 45        | 8             | TEARDROPS LIBERTY                            | GEORGE DUCAS                      | 1255       | 1106 |
| 41                                | 27        | 14            | SHE THINKS HIS NAME WAS JOHN MCA             | REBA MCENTIRE                     | 1245       | 2406 |
| 42                                | 38        | 19            | WHAT'S IN IT FOR ME LIBERTY                  | JOHN BERRY                        | 1236       | 1475 |
| 43                                | 43        | 20            | MORE LOVE EPIC                               | DOUG STONE                        | 1116       | 1155 |
| 44                                | 47        | 20            | SUMMERTIME BLUES ARISTA                      | ALAN JACKSON                      | 1050       | 1021 |
| 45                                | 48        | 8             | HARD LOVIN' WOMAN MCA                        | MARK COLLIE                       | 1043       | 1017 |
| 46                                | 41        | 19            | THE MAN IN LOVE WITH YOU MCA                 | GEORGE STRAIT                     | 1028       | 1195 |
| 47                                | 51        | 4             | DOCTOR TIME COLUMBIA                         | RICK TREVINO                      | 1009       | 783  |
| 48                                | 44        | 19            | HARD TO SAY CURB                             | SAWYER BROWN                      | 974        | 1132 |
| 49                                | 52        | 4             | I GOT IT HONEST RCA                          | AARON TIPPIN                      | 919        | 759  |
| 50                                | 54        | 6             | WHEREVER SHE IS COLUMBIA                     | RICKY VAN SHELTON                 | 869        | 734  |
| 51                                | 50        | 4             | EUGENE YOU GENIUS ASYLUM                     | BRYAN WHITE                       | 859        | 789  |
| 52                                | 55        | 5             | WHAT THEY'RE TALKING ABOUT DECCA             | RHETT AKINS                       | 832        | 625  |
| 53                                | 53        | 5             | THE POWER OF LOVE ARISTA                     | LEE ROY PARNELL                   | 821        | 736  |
| 54                                | 58        | 2             | NIGHT IS FALLIN' IN MY HEART ARISTA          | DIAMOND RIO                       | 757        | 398  |
| 55                                | 34        | 13            | TEN FEET TALL AND BULLETPROOF WARNER BROS.   | TRAVIS TRITT                      | 662        | 1765 |
| 56                                | 61        | 2             | STORM IN THE HEARTLAND MERCURY               | BILLY RAY CYRUS                   | 614        | 329  |
| 57                                | 63        | 3             | YOU AND ONLY YOU LIBERTY                     | JOHN BERRY                        | 528        | 289  |
| <b>★ ★ ★ HOT SHOT DEBUT ★ ★ ★</b> |           |               |  |                                   |            |      |
| 58                                | NEW ▶     |               | GOIN' THROUGH THE BIG D DECCA                | MARK CHESNUTT                     | 473        | 69   |
| 59                                | 65        | 2             | HEART TROUBLE RCA                            | MARTINA MCBRIDE                   | 465        | 224  |
| 60                                | 60        | 4             | MEN WILL BE BOYS LIBERTY                     | BILLY DEAN                        | 362        | 332  |
| 61                                | NEW ▶     |               | NOT A MOMENT TOO SOON CURB                   | TIM MCGRAW                        | 346        | 53   |
| 62                                | 59        | 6             | RED, WHITE AND BLUE COLLAR EPIC              | GIBSON/MILLER BAND                | 346        | 387  |
| 63                                | 57        | 12            | HEART OVER MIND BNA                          | LORRIE MORGAN                     | 319        | 484  |
| 64                                | 62        | 17            | ELVIS AND ANDY ATLANTIC                      | CONFEDERATE RAILROAD              | 282        | 317  |
| 65                                | 67        | 2             | LONG LEGGED HANNAH (FROM BUTTE, MONTANA) BNA | JESSE HUNTER                      | 266        | 217  |
| 66                                | 64        | 18            | POCKET OF A CLOWN REPRISE/WARNER BROS.       | DWIGHT YOAKAM                     | 256        | 264  |
| 67                                | NEW ▶     |               | THE RUNNING KIND ARISTA                      | RADNEY FOSTER                     | 237        | 88   |
| 68                                | 66        | 10            | GONE COUNTRY ARISTA                          | ALAN JACKSON                      | 231        | 223  |
| 69                                | 71        | 2             | TILL I WAS LOVED BY YOU POLYDOR              | CHELY WRIGHT                      | 201        | 165  |
| 70                                | 69        | 4             | GIRL THANG EPIC                              | TAMMY WYNETTE (DUET WITH WYNONNA) | 189        | 184  |
| 71                                | NEW ▶     |               | LITTLE HOUSES EPIC                           | DOUG STONE                        | 171        | 9    |
| 72                                | 72        | 8             | REDNECK STOMP WARNER BROS.                   | JEFF FOXWORTHY                    | 170        | 164  |
| 73                                | 73        | 5             | THAT'S WHAT LOVE'S ABOUT MCA                 | MARTY STUART                      | 160        | 157  |
| 74                                | RE-ENTRY  |               | PMS BLUES COLUMBIA                           | DOLLY PARTON                      | 136        | 116  |
| 75                                | NEW ▶     |               | SHE SHOULD'VE BEEN MINE STEP ONE             | WESTERN FLYER                     | 128        | 51   |

Records showing an increase in detections over the previous week, regardless of chart movement. Airpower awarded to those records which attain 2500 detections for the first time. If two records are tied in number of plays, the record being played on more stations is placed first. Records below the top 20 that are decreasing in plays are removed from the chart after 20 weeks.



A Sincere Thanks to Those Of You Who Played "Give Me A Ring Sometime".

To Those Of You Who Didn't...

"Take That"  
LISA BROKOP

Going For Adds 10/31!

