



What's This Face Doing Behind A Radio Mic?

'Saved by the Bell' alumnus Mario Lopez raps with Monitor about his new gig with the KHHT Los Angeles 'Hot 92 Morning Jamz Session' p. 4

MAY 28, 2004

• We Listen To Radio •

VOLUME 12 • NO. 22 \$6.99

Is Active Rock Less Active?

■ by Bram Teitelman with Anthony Colombo

Active rock earns its moniker not just because its music caters to a more active and younger lifestyle than mainstream, but because it also tends to rotate and add music more quickly than its older-targeted modern counterpart. Yet labels and radio have the perception that the format is adding music more slowly, aided by artist development stories and tighter playlists.

WZZN (the Zone) Chicago PD Bill Gamble says it is the nature of active rock to develop records at a slower pace, which leads to fewer adds. "It takes time for songs to get familiar, and depending on the demographic, there's only going to be so much new music the demo will be able to absorb in a given week," he says. "It takes longer in formats with slower rotations, and active spins its powers 30 to 40 times a week. That there are less adds means that people are holding on to records longer, and that's probably better for the listeners out there."

"It's moving a little bit slower, and for the right reasons," RCA Music Group VP of rock promotion Bill Burrs says. "Everybody's playlist is getting tighter, which makes the record community's job

Continued on page 35

Country Station WXTU Turns 20

■ by Ken Tucker

This year marks 20 years as a country station for WXTU Philadelphia, which dumped a short-lived, churban hybrid format on March 1, 1984, after playing Waylon Jennings' "Are You Ready for the Country."

WKL Boston PD Mike Brophey, who spent 14 years at WXTU, remembers the days leading up to the switch. "It was a big secret," he says. "I was asked to help carry in some boxes and put them in a closet. I opened up one of the boxes to see a label on a cart: Barbara Mandrell's 'Sleepin' Single in a Double Bed.' I knew, but was sworn to secrecy."

Brophey, who worked for the station's first three country PDs—Larry Coates, Bob Young and John Hart—also recalls the first station appearance after the switch. "Nobody showed up," he says.

All of the current and former WXTU staffers contacted by *Airplay Monitor* cite a format bias in the market as being one of the station's biggest challenges over the years. That made the switch to country an interesting one.

"There were the usual Northeast biases against the format from potential cume and advertisers," Brophey says. "It was tough at the time to get

Continued on page 29



GRETCHEN WILSON

THE HOTTEST NEW FEMALE VOCALIST IN AMERICA!

- * "REDNECK WOMAN" - 2 WEEKS #1 AT COUNTRY RADIO
- * 227,000 RECORD-BREAKING FIRST WEEK SALES
- * DEBUT CD SHIPPED PLATINUM
- * HERE FOR THE PARTY DEBUT CD #1 COUNTRY CHARTS
- * #1 VIDEO ON CMT AND GAC
- * ACM AWARDS SHOW AND TODAY SHOW PERFORMANCES

THANKS COUNTRY RADIO!

PRODUCED BY MARK WRIGHT & JOE SCAIFE ASSOCIATE PRODUCER: JOHN RICH
CONNECT WITH GRETCHEN AT WWW.GRETCHENWILSON.COM

2004 SONY MUSIC ENTERTAINMENT INC.



#1 CALLOUT WITH FEMALES ALL AGES!

alicia keys

if i ain't got you

BIG 10 ROTATION AT MTV!

#1 AT BET!

HEAVY AT VH1!

FROM HER 3X PLATINUM ALBUM
the diary of alicia keys

BUZZWORTHY HEAT

MTV remains in BIG 10 (**7 weeks**)

53x last week - over 300 cume spins.....

WJMN 72x/**#5 Callout**.....**WXKS** ADD.....

WAKS moves to sub-power - **Top 10** potential

.....**B97** 107x/**#3 callout**.....**KYLD** 51x/**#5 callout**

MAJOR SUPPORT

continues at: **Z100**, B-96, WKSC, WIOQ,
WIHT, WKQI, KDWB, KHTS, WFLZ,
KSLZ, WKFS, WBZZ, KKRZ.....more

MONITOR HEAT

Mainstream Top 40 Debut (**38**) (+292)!!!

Rhythmic Top 40 (**11**) (+351)!!!

NEW

KIIS-FM, WBZZ, WBLI, WRVW,
WPYO, WKZL, KWYE, KQCH, KKMG

"No modern woman is both singing and writing songs of this caliber."

Jim Farber, New York Daily News



www.aliciakeys.com
www.jrecords.com



'Headless' Billboards Pulled

Country **WSIX** Nashville has pulled close to 70 billboards depicting the disembodied head of morning man **Gerry House** on a silver platter. The billboards, which were put up well before the recent beheading of American **Nicholas Berg** in Iraq, carried such catchphrases as "Laugh your HEAD off!" and "NoBODY does it better."

According to PD **Keith Kaufman**, while the station received calls from listeners, the decision to pull the billboards had already been made. "Obviously we're very sensitive to that issue and made the immediate call to get those things down," he says. The boards were replaced by others that promote the station's slogan "the biggest hits, the biggest stars."

Meanwhile, at Clear Channel country station **KMFX** (the Fox) Rochester, Minn., morning team **Tracy Dixon** and **Alan Reed** were suspended for one day after planning a stunt inspired by the abuse of detainees at Iraq's Abu Ghraib prison, according to the Associated Press. The pair planned to have men strip down to their underwear, then pose for pictures like those taken at the prison. **GM Bob Fox** found out about the plan and suspended the duo before the stunt could be carried out.

BUSINESS & MANAGEMENT

Infinity has unveiled a new management structure in Philadelphia. Active **WYSP** GSM **Peter Kleiner** is named VP/GM of the station. **WYSP** OM **Tim Sabean** is named VP of programming for Infinity's five-station Philly cluster. And news **KYW-AM** GSM **David Yadgaroff** is named VP/GM of that station.

Clear Channel Entertainment promotes senior VP of finance **Charlie Mierswa** to the new position of senior VP of business affairs for the music division. **Ann Latora** fills Mierswa's former role; she comes from the VP of finance position at **RCA Victor**.

Sirius Satellite Radio has forged an agreement with Echostar's Dish satellite TV network that will beam the radio service into more than 9.7 million U.S. homes. The deal provides subscribers to the Dish network with access to all of Sirius' 64 music channels at no extra charge. Sirius' full range of offerings comprises 110 channels, including syndicated and original talk-radio programming. The Sirius channels will become the Dish network's only music offerings and will give Sirius a far wider market penetration. Sirius' subscriber base numbers around 350,000, according to figures released by the company in April.

In other satcaster news, men's magazine **Maxim** is in talks with Sirius and XM to launch a branded channel that would likely reflect the sex-packed articles and down-and-dirty humor of the publication, according to the **New York Post**.

A Festive HFS

The summer concert series unofficially kicked off May 22, with modern **WHFS** (99HFS) Washington, D.C.'s **HFSival**. The show sold out the 68,000-capacity **RFK Stadium**, with acts including the **Cure**, **Jay-Z**, the **Offspring**, **Cypress Hill** and **P.O.D.** While the Associated Press reports that 200 attendees were treated for heat exhaustion and 50 were taken to the hospital, APD **Libby Carstensen** says the media are stretching for an angle. "It was 90 [degrees] and humid," she says. "Construction workers suffer from heat exhaustion every day. And 50 people taken to the hospital out of 68,000 is pretty impressive. We're very satisfied with the turnout."

FORMATS: BUFFALO'S NEW LAKE

Entercom launches **WNSA** in Buffalo, N.Y., as "the Lake," a classic hits/triple-A hybrid patterned after its **KQMT** (the Mountain) Denver. **Hank Dole**, most recently at **XM**, is programming the signal, which is currently jockless. The station had been sports/talk.

Modern **KLEC** (Lick) Little Rock, Ark., flips to oldies with new calls **KOLL**. The entire staff exits.

PROGRAMMING: COUNTRY CONVERT

Former **KKAT** Salt Lake City APD/MD/morning man **Tommy Carrera** returns to Albuquerque, N.M., as PD/morning man for new country convert **KKRG** (the Range). Prior to his stint at **KKAT**, Carrera had programmed crosstown country **KBQI**. Meanwhile, **KKRG** OM **Jim Walton** will handle middays on the Range.

Country **KCYX**/classic country **KKYX** San Antonio PD **George King** heads to similarly formatted **WMZQ** Washington, D.C., for the same duties. He replaces APD/MD **Jon Anthony**, who exited in March. King's first order of business is to hire an afternoon driver to take Anthony's old airshift.

Active **KRFR** (Real Rock 104.3) Fresno, Calif., PD **Alex Quigley** exits. American General Media director of FM operations **Robert Lewis** is seeking a replacement. Quigley can be reached at 661-343-2467 or alex_quigley@hotmail.com.

Country **WBEE** Rochester, N.Y., acting PD **Billy Kidd** officially gets the nod. He replaces **Chris Keyzer**, who exited in March.

AURN REMEMBERS WHITEHEAD

American Urban Radio Networks' "USA Music Magazine," hosted by **John Monds**, will remember the late **John Whitehead** of R&B songwriting team **McFadden & Whitehead** over the Memorial Day weekend.

Whitehead was shot to death May 11 in Philadelphia. Songwriting partner **Gene McFadden** will appear on the radio show.

McFadden & Whitehead helped define "the Philadelphia sound" by writing such classics as "Backstabbers," "For the Love of Money," "Bad

Luck" and "Wake Up Everybody." Their most notable achievement came in 1979, when they wrote and recorded the hit inspirational song "Ain't No Stopping Us Now."

PEOPLE: WINANS' RADIO SHOW

BeBe Winans becomes a radio host with the launch of "The BeBe Winans Radio Show," a two-hour weekly program syndicated by **SupeRadio Networks**. **Blue Sky Productions**, the production team that produces "The Dave Koz Radio Show," will help produce the program. The show will feature interviews, features and guests as well as impromptu performances by Winans and friends. Highlights from the show can be heard at **beberadio.com**. Winans will also host a daily feature, "A Moment of Inspiration," that will offer uplifting stories from music, sports and entertainment personalities.

Ebro adds the APD title at rhythmic top 40 **WQHT** (Hot 97) New York. He also serves as MD at the station.

Rosci the new **Mid-Day Mami** claims that shift at **WPWX** (Power 92) Chicago. The former **WBOT** Boston midday host replaces **Courtney Hicks**, who moves to mornings at Power 92.

Garret Doll trades in his director of promotions duties at country **KYGO** Denver for MD and morning-show producer stripes. The station is seeking a new promotion director; send résumés to director of marketing **Dwayne Taylor**.

Country **KFDI** Wichita, Kan., morning duo **Cornbread & Pat** head east for wakeups at similarly formatted **WIL** St. Louis, where they replace **David Craig**, who exited in April after 16 years at the station. **WIL** news director **Monica Adams** stays on board for the new configuration, while morning show member **Elaine Everett** will exit. **Back** in Wichita, **KFDI** OM **Beverlee Brannigan** is on the hunt for the duo's replacement.

Former **KMLE** Phoenix morning man **Dan Tooker** lands at country **WYCT** (the Cat) Pensacola, Fla., for the same shift, where he becomes **Tom Tooker**. Cat PD **Kevin King** is still looking for someone to round out the morning show.

Talk **WTKS** (Real Radio 104.1) Orlando, Fla., morning team **the Monsters of the Morning** takes on the same at active **WXTB** (98 Rock) Tampa, Fla. The seven-person team will still be heard on **WTKS**. It had been filling in at 98 Rock since the departure of **Bubba the Love Sponge**.

Top 40 **WNOU** Indianapolis morning team **Wank & O'Brien** are now simulcasting on crosstown adult top 40 sister **WENS**, where they replace **Ernie & Angela**, who move to nights. After two weeks of simulcasting, **Wank & O'Brien** move permanently to **WENS**.

Heritage rock **KLBJ** Austin, Texas, midday host **Peggy Simmons** exits after 22 years. MD **Loris Lowe** assumes her duties.

Look for top 40 **WMRV** Binghamton, N.Y., APD/morning co-host **Selena** to jump to country **WGGY** (Froggy) Scranton, Pa., where she'll join the morning show.

Active **WGIR** Manchester, N.H., afternoon jock **Jim Fronk** was fired following an inappropriate comment he made on the air. Clear Channel cited its Responsible Broadcasting Initiative as reason for the firing. The station is seeking a replacement.

Country **WYCD** Detroit director of marketing and promotions **Lauri Brooks** exits the business. A replacement has not been named for the 19-year radio vet.

Trevor Simpson is named promotions/marketing director at **KPTI** (Power 92.7) San Francisco. He was formerly the promotions director/mix-show coordinator during **KPTI**'s stint as a dance outlet. **Simpson**, a popular Bay Area club DJ, has held previous promotion positions at **KYLD** (Wild 94.9) San Francisco and is a promoter at various venues in the Bay Area.

Top 40 **WNCI** Columbus, Ohio, promotion director **Bela Gathy** exits.

THE MOVE

Darlene Starr exits **Equity Music Group** in Nashville where she was Southwest regional promotion director. She can be reached at **darlenestarr@comcast.net** or at 214-906-8514.

Pitt Poser Brings 'Troy' To Twister



Country **KTYS** (the Twister) Dallas recently hosted the local premiere of **Brad Pitt's** new movie, "Troy." A few Twister listeners are seen posing with a Pitt look-alike. (Photo: **KTYS**)



Country **WMZQ** Washington, D.C.'s **Mike Kelly** gets some loving from the listeners at the station's recent **WMZQfest** in **Bristow, Va.** **Reba McEntire**, **Tracy Byrd**, **Phil Vassar** and **Andy Griggs** were the headliners. (Photo: **WMZQ**)



Alanis Morissette recently had cameras from the **Oxygen** network trailing her from sunrise to sunset—the same day she appeared at a concert for adult top 40 **WPLJ** New York. Midday guy **Rich Kaminski** joined her. (Photo: **WPLJ**)



Democratic presidential candidate **John Kerry** took time out during a recent Florida campaign stop to meet adult R&B **WHQT** (Hot 105) Miami weekend personality **Sonia "the Woman" Colón**. (Photo: **Sonya Delmar**)

The Billboard Buzz

DATA PROVIDED BY **promosquad**

Ages 13-29 Only

April	March	Artist	Label
1	4	Usher	Arista
2	2	OutKast	Arista
3	8	Maroon5	J
4	6	Eminem	Interscope
5	1	Evanescence	Wind-up
6	3	Linkin Park	Warner Bros.
7	11	Alicia Keys	J
8	5	Christina Aguilera	RCA
9	18	Jessica Simpson	Columbia
10	29	Britney Spears	Jive
11	7	No Doubt	Interscope
12	14	Beyoncé	Columbia
13	12	Blink-182	MCA
14	13	Coldplay	Capitol
15	10	3 Doors Down	Universal
16	24	50 Cent	Shady/Interscope
17	77	Hoobastank	IDJMG
18	19	Missy Elliott	Elektra
19	55	Incubus	Epic
20	16	Justin Timberlake	Jive
21	22	Nickelback	Roadrunner
22	23	Ludacris	IDJMG
23	40	Destiny's Child	Columbia
24	27	Simple Plan	Lava
25	21	Matchbox Twenty	Atlantic

The Billboard Buzz Chart is a gauge of artist popularity through an Internet poll of music fans. Scores are affected by every aspect of an artist's career. Marketing, airplay, retail, print media, touring, TV appearances and rumor all have an impact on Buzz Chart performance. Data is collected with the same strict attention to detail as all other PromoSquad research. A list of 250 artists is compiled based on airplay and sales. The artists are rated by thousands of carefully screened music fans. Results are compiled weekly and monthly. The top 25 chart is based on a weighted positive calculation that takes into account each artist's popularity and buzz among the entire music-listening population. PromoSquad also maintains detailed format-specific charts (e.g., Top 40 Mainstream, R&B/Hip-Hop, Country, etc.). For more information, contact **buzz@promosquad.com**.



Mario Lopez: From The Tube To The L.A. Radio Airwaves

He has played the class jock and a cop on a bike. Now actor Mario Lopez has entered the world of reality programming, as a true-to-life radio DJ.

Teamed with Michelle Visage and Diana Steele, Lopez joined KHHT Los Angeles' "Hot 92 Morning Jamz Session" earlier this month.

"I'm a huge music lover, and I've always been a big fan of radio," Lopez says. "It's my goal to attack all forms of entertainment—to be an actor in sitcoms and episodic TV, and I love hosting shows. I've watched my buddies Ryan Seacrest and Danny Bonaduce being able to juggle everything and thought that I would love to do something like that."

PILOT OF THE AIRWAVES

Lopez also reflects on his upbringing in San Diego, listening to local radio. "You get into the personalities and get little insights into their lives. They become more like friends. That made a big impression."

KHHT PD Mike Marino says, "Mario seems to be having fun with this transition to radio. He's almost like a kid in a candy shop when we meet to brainstorm about the show."

The entertainer is perhaps best-known for his role as high school hottie Slater in NBC sitcom "Saved by the Bell" (1989-1993) and as bicycle-riding policeman Bobby Cruz in USA Network's "Pacific Blue" (1998-2000).

But, at 30, he has ventured far beyond, as a co-host with Dick Clark and Bonaduce on NBC talk show "The Other Half" (2001-2003) and as host of Animal Planet's "Pet Star" and NBC's "Search for the Most Talented Kid in America." He has also had regular gigs on "Hollywood Squares" and "Pyramid."

With all of that filling his plate, Lopez still actively pursued Clear Channel/Los Angeles regional VP Roy Laughlin for a job at the R&B-leaning AC.

"I was campaigning for him to give me a shot," Lopez says. "I love the format and the people here. Plus, doing morning drive allows me to still do everything else. I just have to go to bed at a reasonable hour and don't have much of a social life during the week."

Lopez says his weekday 6 a.m. to 9:30 a.m. role with Visage and Steele runs from the expected Mars vs. Venus moments to playing ground patrol. "I'm actually the most conservative of the three," he says with a laugh. "Michelle gets kind of crazy, and Di is out there with her sexy voice. We all have a lot of fun, and I'm really passionate about what's going on in the entertainment

world. It feels like we hit it off instantly."

Comparing the radio and TV galaxies, Lopez gives props to the instant gratification of the airwaves. "I love being able to fly off the cuff and the live aspect of it," he says. "On television, there's the tedious process of lighting, stage blocking, camera angles, all sorts of things before the product goes on the air. It's time-consuming."

"On radio, there's also a lot of hard work, but you see the results a lot quicker. That spontaneous aspect is very rewarding as an entertainer, as a host. You still can cheat; you've got information and all of the papers in front of you. It's just a matter of being comfortable and putting things into your own words."

Even so, Lopez admits that the crew is self-conscious of those words now, with the recent FCC crackdown on indecency. And working for Clear Channel, the mission to keep it clean is front and center.

"Again, I'm pretty conservative, so it's not so much an issue for me personally, but we're all looking over our shoulders and are very conscious about being politically correct and doing the right thing."

"It's unfortunate that an incident that had nothing to do with the radio world"—Janet Jackson's boob trap at the Super Bowl—"has still led to us suffering the brunt of a mistake," Lopez says. "I definitely feel it was inappropriate, but it was also blown out of proportion."

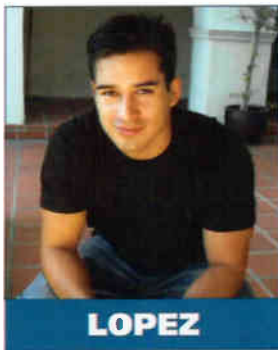
Lopez also feels for Howard Stern, who he calls "a very talented guy who has worked hard for his popularity. It's a shame that there's such a crack-down; people are losing jobs."

LOOKING AHEAD

For his future, Lopez hopes to keep on conquering the entertainment business from as many angles as possible, including a renewed, second upcoming season of "Pet Star" and another potential live hosting post on TV.

"I've been blessed to stay busy in a business where it's either feast or famine," he says. "I hope to continue doing radio, maybe another TV show and producing. I want to be as active as I can and also look for opportunities for other Latinos. We need people behind the camera to put them in front of the camera."

As for the morning gig at KHHT, Lopez hopes for a long run on the Los Angeles airwaves. "It's just such a good time, and it's always a party," he says. "It's hard to believe it's a job."



LOPEZ



Wango Tango Goes Berserk In L.A.

KIIS-FM Los Angeles held its annual summer concert, Wango Tango, at the Rose Bowl. The event featured a walloping lineup, including Janet Jackson, Big Boi from OutKast, Jessica Simpson, Hilary Duff, Enrique Iglesias, Lenny Kravitz, Clay Aiken, N*E*R*D, JC Chasez, Black Eyed Peas, Maroon5, Rooney, Kimberley Locke, Nick Cannon and William Hung, along with special hosts the Backstreet Boys. Ryan Seacrest and the rest of the on-air staff were also on hand, along with special guests Simon Cowell and Randy Jackson. (Photos: KIIS-FM)



KIIS-FM on-air talent JoJo Wright, right, interviews Hilary Duff.



Lenny Kravitz, third from right, hangs with, from left, Virgin Records' Brien Terranova, PD John Ivey, KIIS-FM's Julie Pilat and Virgin's Hilary Shaev and Danny Cooper.



PD John Ivey gets a squeeze from Janet Jackson at the May 15 event.

RADIO CONCERT MONITOR

DATE	STATION	EVENT	PROMOTIONS DIRECTOR
May 29	KRBE Houston	Earth Day	Lesley Brotamonte
		APPEARING: Enrique Iglesias, Los Lonely Boys, Jason Mraz, Rooney, Fuel, Joss Stone	
May 30	WBLI Long Island, N.Y.	Summer Jam	Nancy Cambino
		APPEARING: Avril Lavigne, JC Chasez, Kimberley Locke, Fefe Dobson, Christina Milian, Hanson, Jordan Knight, Busted	
May 31	WKSE Buffalo, N.Y.	Kiss the Summer Hello 16	Dave Universal
		APPEARING: Kanye West, Cassidy, J-Kwon, Switchfoot, Mario Winans, Liz Phair, the Calling, Kimberley Locke, Fefe Dobson, Rob Base, Katy Rose, William Hung	
June 27	KZZO Sacramento, Calif.	A Day in the Zone	Stacy Moitoso
		APPEARING: Train, Live, Melissa Etheridge, William Hung	

Let us monitor your event! Call Chuck Taylor at 646-654-4729 or e-mail ctaylor@airplaymonitor.com

MAINSTREAM TOP 40

FOR WEEK ENDING MAY 23, 2004



Songs ranked by number of detections. Playlists are listed in order of TSA weekly cume, beginning with the highest-cuming station. Cumes are updated twice yearly following the release of the spring and fall Arbitron surveys. The number of stations shown each week varies depending upon space.

Nielsen Broadcast Data Systems. **NEW!** denotes songs with 6 or more detections at station for first time this week.

WHTZ New York
Sr. VP/Pgm: Tom Poleman
APD: Sharon Dastur
MD: Paul Bryant
Clear Channel 201-209-6200

Table with 2 columns: Rank, Song/Artist. Top 40 list for WHTZ New York.

KIIS Los Angeles
PD: John Ivey
APD/MD: Julie Pilat
Clear Channel 818-559-2252

Table with 2 columns: Rank, Song/Artist. Top 40 list for KIIS Los Angeles.

WKSC Chicago
PD: Rod Phillips
MD: Jeff "Smash" Murray
Clear Channel 312-255-5100

Table with 2 columns: Rank, Song/Artist. Top 40 list for WKSC Chicago.

WIOQ Philadelphia
OM/PD: Todd Shannon
APD/MD: Marian Newsome
Clear Channel 610-667-8100

Table with 2 columns: Rank, Song/Artist. Top 40 list for WIOQ Philadelphia.

WXKS Boston
VP/Pgm: Jack McCartney
APD/MD: Kid David Corey
Clear Channel 781-396-1430

Table with 2 columns: Rank, Song/Artist. Top 40 list for WXKS Boston.

KRBE Houston
PD: Tracy Austin
APD/MD: Leslie Basenberg-Whittle
Susquehanna 713-266-1000

Table with 2 columns: Rank, Song/Artist. Top 40 list for KRBE Houston.

WKQI Detroit
OM: Dom "Domino" Theodore
APD/MD: Beau
Clear Channel 248-324-5800

Table with 2 columns: Rank, Song/Artist. Top 40 list for WKQI Detroit.

WDRQ Detroit
PD: Alex Tar
APD: Jay Towers
MD: Keith Curry
ABC/Disney 313-871-9300

Table with 2 columns: Rank, Song/Artist. Top 40 list for WDRQ Detroit.

KHKS Dallas
PD: Patrick Davis
APD/MD: Fernando Ventura
Clear Channel 214-866-8000

Table with 2 columns: Rank, Song/Artist. Top 40 list for KHKS Dallas.

WIHT Washington, DC
VP Ops: Jeff Wyatt
MD: Albie Dee
Clear Channel 301-468-9429

Table with 2 columns: Rank, Song/Artist. Top 40 list for WIHT Washington, DC.

WFLZ Tampa
DM/PD: Jeff Kapugi
APD: Toby Knapp
MD: Stan "The Man" Priest
Clear Channel 813-839-9393

Table with 2 columns: Rank, Song/Artist. Top 40 list for WFLZ Tampa.

WSTR Atlanta
PD: Dan Bowen
APD/MD: Michael Chase
Jefferson Pilot 404-261-2970

Table with 2 columns: Rank, Song/Artist. Top 40 list for WSTR Atlanta.

KDWB Minneapolis
PD: Rob Morris
MD: Derek Moran
Clear Channel 952-417-3000

Table with 2 columns: Rank, Song/Artist. Top 40 list for KDWB Minneapolis.

KBKS Seattle
PD: Mike Preston
MD: Marcus D.
MC: Jerry Kelly
Infinity 206-805-1061

Table with 2 columns: Rank, Song/Artist. Top 40 list for KBKS Seattle.

WHYI Miami
PD: Rob Roberts
APD: Donnie Michaels
MD: Michael Yo
Clear Channel 954-862-2000

Table with 2 columns: Rank, Song/Artist. Top 40 list for WHYI Miami.

WNKS Charlotte
PD: John Reynolds
MD: Keli Reynolds
Infinity 704-331-9510

Table with 2 columns: Rank, Song/Artist. Top 40 list for WNKS Charlotte.

WAKS Cleveland
PD: Dan Mason
APD/MD: Kasper
Clear Channel 216-520-2600

Table with 2 columns: Rank, Song/Artist. Top 40 list for WAKS Cleveland.

WPST Trenton
Sr. VP/Pgm: Michelle Stevens
PD: Dave McKay
APD/MD: Chris Puroro
Nassau 609-419-0300

Table with 2 columns: Rank, Song/Artist. Top 40 list for WPST Trenton.

POWERPLAYS



Nielsen Broadcast Data Systems

Songs ranked by number of detections. Playlists are listed in order of TSA weekly come, beginning with the highest-cum station. Comes are updated twice weekly following the release of the spring and fall Arbitron surveys. The number of stations shown each week varies depending upon space.

denotes songs with 6 or more detections at station for first time this week.

WBLI Long Island PD: J.J. Rice APD: Al Levine MD: L.J. Cox 631-669-9254

WNCI Columbus RVP/PD: Jimmy Steele APD/MD: Joe Kelly Clear Channel 614-430-9624

KHST San Diego Dir./FM Pgmng: Jim Richards PD: Diana Laird APD/MD: Hitman Haze Clear Channel 619-291-9191

WKSS Hartford PD: Rick Vaughn MD: Jolo Brooks Clear Channel 860-723-6160

KRBV Dallas PD/APP: Alex Valentine MD: Bethany Parks Infinity 214-630-3011

KSLZ St. Louis OM: Mike Wheeler PD: Boomer MD: Taylor J. Clear Channel 314-692-5108

Table with 2 columns: Rank and Song Title. Top songs include Maroon 5 This Love, Hoobastank The Reason, Usher Featuring Lil Jon & Lu Yaeh!, etc.

Table with 2 columns: Rank and Song Title. Top songs include Maroon 5 This Love, Hoobastank The Reason, Usher Featuring Lil Jon & Lu Yaeh!, etc.

Table with 2 columns: Rank and Song Title. Top songs include Mario Winans Featuring Enya I Don't Wa, Usher Featuring Lil Jon & Lu Yaeh!, Usher Burn, etc.

Table with 2 columns: Rank and Song Title. Top songs include Beyonce Naughty Girl, Black Eyed Peas Hey Mama, Hoobastank The Reason, etc.

Table with 2 columns: Rank and Song Title. Top songs include J-Kwon Tippy, Usher Tippy, Usher Featuring Lil Jon & Lu Yaeh!, etc.

Table with 2 columns: Rank and Song Title. Top songs include J-Kwon Tippy, Usher Tippy, Usher Featuring Lil Jon & Lu Yaeh!, etc.

WNOU Indianapolis OM: David Edgar PD: Chris Edge MD: Dylan Emmis 317-236-9300

WKST Pittsburgh PD: Mark Anderson Clear Channel 412-937-1441

WBZZ Pittsburgh VP/Pgmng: Keith Clark APD: Ryan Mill MD: Kobe Infinity 412-920-9400

WXLL Orlando OM/PD: Adam Cook APD/MD: Pete DeGraaff Clear Channel 407-916-7800

WDCG Raleigh OM: Jon Robbins PD: Rick Schmidt APD/MD: Chase Clear Channel 919-871-1051

WPRO Providence PD: Tony Bristol MD: Davey Morris Citadel 401-433-4200

Table with 2 columns: Rank and Song Title. Top songs include Usher Featuring Lil Jon & Lu Yaeh!, Hoobastank The Reason, Mario Winans Featuring Enya I Don't Wa, etc.

Table with 2 columns: Rank and Song Title. Top songs include Usher Burn, Beyonce Naughty Girl, Mario Winans Featuring Enya I Don't Wa, etc.

Table with 2 columns: Rank and Song Title. Top songs include Beyonce Naughty Girl, Mario Winans Featuring Enya I Don't Wa, Usher Burn, etc.

Table with 2 columns: Rank and Song Title. Top songs include Hoobastank The Reason, Kimberly Locke 8th World Wonder, Usher Featuring Lil Jon & Lu Yaeh!, etc.

Table with 2 columns: Rank and Song Title. Top songs include D12 My Band, Beyonce Naughty Girl, Usher Featuring Lil Jon & Lu Yaeh!, etc.

Table with 2 columns: Rank and Song Title. Top songs include Hoobastank The Reason, Black Eyed Peas Hey Mama, Maroon 5 This Love, etc.

WKFS Cincinnati MD: Carson Clear Channel 513-763-6499

WWWQ Atlanta VP/Pgmng: Leslie Fram OM/PD: Dylan Sprague MD: Jeff Miles Susquehanna 404-497-4700

KKRZ Portland PD: Brian Bridgman APD: Kobe Austin MD: Maynard Clear Channel 503-226-0100

WRVW Nashville PD: Rich Davis MD: Tommy Butter Clear Channel 615-664-2400

KXXM San Antonio PD: Jay Shannon MD: Tony Cortez Clear Channel 210-736-9700

WXSS Milwaukee OM: Brian Kelly APD/MD: PJ Entercom 414-529-1250

Table with 2 columns: Rank and Song Title. Top songs include Mario Winans Featuring Enya I Don't Wa, D12 My Band, J-Kwon Tippy, etc.

Table with 2 columns: Rank and Song Title. Top songs include Usher Burn, Beyonce Naughty Girl, Mario Winans Featuring Enya I Don't Wa, etc.

Table with 2 columns: Rank and Song Title. Top songs include Hoobastank The Reason, Mario Winans Featuring Enya I Don't Wa, Maroon 5 This Love, etc.

Table with 2 columns: Rank and Song Title. Top songs include Hoobastank The Reason, Mario Winans Featuring Enya I Don't Wa, D12 My Band, etc.

Table with 2 columns: Rank and Song Title. Top songs include Hoobastank The Reason, Maroon 5 This Love, Usher Featuring Lil Jon & Lu Yaeh!, etc.

Table with 2 columns: Rank and Song Title. Top songs include Maroon 5 This Love, Hoobastank The Reason, Usher Featuring Lil Jon & Lu Yaeh!, etc.

POWERPLAYISTS



Songs ranked by number of detections. Playlists are listed in order of TSA weekly cume, beginning with the highest-cuming station. Cumes are updated twice yearly following the release of the spring and fall Arbitron surveys. The number of stations shown each week varies depending upon space.

Nielsen Broadcast Data Systems denotes songs with 6 or more detections at station for first time this week.

KDND Sacramento PD: Steve Weed MD: Heather Lee APD: Christopher K. Entercom 916-334-7777

KFMD Denver PD: Jim Lawson MD: Gerry Dixon Clear Channel 303-713-8000

WFBC Greenville, SC PD: Nikki Nite APD/MD: Tias Schuster Entercom 864-271-9200

KMXX Kansas City PD: Chris Taylor APD: Ponch MD: Holly Clark Infinity 816-756-5698

WMEG San Juan SBS 787-622-9700

WKZL Greensboro PD: Jeff McHugh APD: Terrie Knight MD: Marcia Gan Dick 336-274-8042

WSNX Grand Rapids PD: Eric O'Brien Clear Channel 616-459-1919

WEZB New Orleans OM/MD: Mike Kaplan APD: Charlie Scott MD: Stevie G Entercom 504-593-6376

KJOY Oklahoma City OM/MD: Mike McCoy Clear Channel 405-840-5271

WKRZ Wilkes-Barre PD: Jerry Padden MD: Kelly K. Entercom 570-883-9850

WKSE Buffalo PD: Dave Universal MD: Brian B. Wilde Entercom 910-843-0600

WIOG Saginaw PD: Brent Carey MD: Eric Chase Citadel 989-776-2100

KCHZ Kansas City PD: Dave Johnson MD: Megan Ireland Cumulus 816-356-2400

WWST Knoxville Dir Pgm: Rich Bailey MD: Scott Bohannon Journal 865-693-1020

WGTZ Dayton OM: J.D. Kunes MD: Scott Sharp Radio One 937-294-5858

WSTW Wilmington, DE PD: John Wilson Assoc. PD/MD: Mike Rossi Delmarva 302-478-2700

WLDI West Palm Beach PD: Chris Marino APD/MD: Dave Vayda Clear Channel 561-616-6600

WVKS Toledo OM: Bill Michaels APD/MD: Mark Andrews Clear Channel 419-244-8321

IMPACT! AIRPLAY Monitor Nielsen Broadcast Data Systems

Songs posting gains in detections or with a percentage loss in detections equal to or better than the monitored downline percentage in the format. Songs listed in order of detections.

TOP 10 BOUND

BRITNEY SPEARS 3768/784
Everytime (Jive/Zomba)
Total Stations: 111
Chart Move: 19-14
H (9), M (69), L (33)
Airplay Adds: 6

Table with columns for station, format, and detections for Britney Spears' 'Everytime'.

SWITCHFOOT 3566/288
Meant To Live (Red Ink/Columbia)

Total Stations: 116
Chart Move: 15-15
H (15), M (53), L (48)
Airplay Adds: 3

Table with columns for station, format, and detections for Switchfoot's 'Meant To Live'.

MIS-TEEQ 3096/321
Scandalous

AIRPLAY LEADER (FIRST STATION TO 150 PLAYS)
KHTT • Tulsa, OK
PD: Carly Rush
MD: Matt Ryder
Date: 04/18/04

Total Stations: 115
Chart Move: 21-16
H (1), M (66), L (48)
Airplay Adds: 8

Table with columns for station, format, and detections for Mis-Teeq's 'Scandalous'.

JAY-Z 2939/20
Dirt Off Your Shoulder (Roc-A-Fella/Def Jam/IDJMG)

Total Stations: 113
Chart Move: 20-18
H (1), M (38), L (64)
Airplay Adds: 1

Table with columns for station, format, and detections for Jay-Z's 'Dirt Off Your Shoulder'.

YELLOWCARD 2844/295
Ocean Avenue (Capitol)

AIRPLAY LEADER (FIRST STATION TO 150 PLAYS)
WBBO • Monmouth/Ocean, NJ
PD: Greg Thomas
MD: Kid Knight
Date: 03/28/04

Total Stations: 115
Chart Move: 22-19
H (5), M (51), L (59)
Airplay Adds: 0

Table with columns for station, format, and detections for Yellowcard's 'Ocean Avenue'.

KANYE WEST FEAT. SYLVEENA JOHNSON 1910/124
All Falls Down (Roc-A-Fella/Def Jam/IDJMG)

Total Stations: 92
Chart Move: 30-25
H (6), M (22), L (64)
Airplay Adds: 9

Table with columns for station, format, and detections for Kanye West's 'All Falls Down'.

CHRISTINA MILIAN 2459/489
Dip It Low (Island/IDJMG)

Total Stations: 114
Chart Move: 27-22
H (3), M (39), L (72)
Airplay Adds: 7

Table with columns for station, format, and detections for Christina Milian's 'Dip It Low'.

JOJO 2450/462
Leave (Get Out) (Da Family/Blackground/UMRG)

Total Stations: 112
Chart Move: 26-23
H (0), M (49), L (63)
Airplay Adds: 6

Table with columns for station, format, and detections for JoJo's 'Leave (Get Out)'.

LIZ PHAIR 1717/55
Extraordinary (Capitol)

Total Stations: 114
Chart Move: 32-28
H (0), M (28), L (86)
Airplay Adds: 4

Table with columns for station, format, and detections for Liz Phair's 'Extraordinary'.

SUGABABES 1855/176
Hole In The Head (Interscope)

Total Stations: 112
Chart Move: 31-26
H (1), M (23), L (88)
Airplay Adds: 7

Table with columns for station, format, and detections for Sugababes' 'Hole In The Head'.

LOS LONELY BOYS 1783/230
Heaven (Or/Epic)

Total Stations: 104
Chart Move: 33-27
H (0), M (32), L (72)
Airplay Adds: 7

Table with columns for station, format, and detections for Los Lonely Boys' 'Heaven'.

LIZ PHAIR 1717/55
Extraordinary (Capitol)

Total Stations: 114
Chart Move: 32-28
H (0), M (28), L (86)
Airplay Adds: 4

Table with columns for station, format, and detections for Liz Phair's 'Extraordinary'.

MARIA MENA 1511/302
You're The Only One (Columbia)

Total Stations: 86
Chart Move: 37-31
H (0), M (18), L (68)
Airplay Adds: 14

Table with columns for station, format, and detections for Maria Mena's 'You're The Only One'.

PETEY PABLO 1462/293
Freak-A-Leek (Jive/Zomba)

Total Stations: 84
Chart Move: 39-32
H (1), M (20), L (63)
Airplay Adds: 12

Table with columns for station, format, and detections for Petey Pablo's 'Freak-A-Leek'.

CHERIE 1388/20
I'm Ready (Lava)

Total Stations: 111
Chart Move: 35-33
H (0), M (13), L (98)
Airplay Adds: 3

Table with columns for station, format, and detections for Cherie's 'I'm Ready'.

H=Heavy (55+ Detections), M=Medium (25-54), L=Light (Under 25). Airpower awarded to songs appearing in the top 20 on both the Airplay and Audience charts for the first time with increases in both detections and audience. * Initial impact: songs appearing on this page for the first time in summary form. Airplay Adds are songs with 6 or more detections at new stations this week. The Airplay Leaderboard ranks taste-maker stations that have been the most successful in identifying future hit songs as measured by the amount of AIRPOWER titles for which they were Airplay Leaders. Refer to each format's Power Playlists page to see this week's Airplay Leaders. * indicates title earned HiPREDICTOR status in research data provided by Promosquad.

denotes songs with 6 or more detections at station for first time this week.

POWERPLAY HITS

WPLJ New York*
VP/Pgm: Tom Cuddy
PD: Scott Shannon
MD: Tony Mascaro
ABC/Disney 212-613-8900



Table with 3 columns: Rank, Title, and TW LW. Top entry: 1 Los Lonely Boys Heaven 44 43

KYSR Los Angeles*
OM: John Ivey
PD: Angela Perelli
APD/MD: Chris Patyk
Clear Channel 818-559-2252



Table with 3 columns: Rank, Title, and TW LW. Top entry: 1 311 Love Song 57 40

WTMX Chicago*
OM/PD: Mary Ellen Kachinske
Bonneville 312-946-1019



Table with 3 columns: Rank, Title, and TW LW. Top entry: 1 Maroon5 This Love 47 49

WBMX Boston*
Sr. VP/Pgm: Greg Strassel
OM/PD: Jon Zeller
APD/MD: Mike Mullaney
Infinity 617-779-2000



Table with 3 columns: Rank, Title, and TW LW. Top entry: 1 Maroon5 This Love 58 58

WRQX Washington, DC
OM/PD: Kenny King
MD: Carol Parker
ABC/Disney 202-686-3100



Table with 3 columns: Rank, Title, and TW LW. Top entry: 1 3 Doors Down Here Without You 42 28

KIOI San Francisco
OM/PD: Michael Martin
APD/MD: James Baker
Clear Channel 415-538-1013



Table with 3 columns: Rank, Title, and TW LW. Top entry: 1 Shania Twain Forever And For Always 38 36

KLLC San Francisco*
PD: John Peake
APD/MD: Jayn
Infinity 415-765-4000



Table with 3 columns: Rank, Title, and TW LW. Top entry: 1 Maroon5 This Love 35 39

WWZZ Washington, DC*
PD: Sammy Simpson
APD/MD: Sean Sellers
Bonneville 703-522-1041



Table with 3 columns: Rank, Title, and TW LW. Top entry: 1 3 Doors Down Away From The Sun 63 36

KHMN Houston
PD: Buddy Scott
APD/MD: Rick O'Bryan
Clear Channel 713-830-8000



Table with 3 columns: Rank, Title, and TW LW. Top entry: 1 Maroon5 This Love 51 48

KSTP Minneapolis
PD: Leighton Peck
APD/MD: Jill Roen
Hubbard 651-642-4141



Table with 3 columns: Rank, Title, and TW LW. Top entry: 1 Hoobastank The Reason 52 47

KDMX Dallas*
PD: Pat McMahon
APD/MD: Lisa Thomas
Clear Channel 972-991-1029



Table with 3 columns: Rank, Title, and TW LW. Top entry: 1 Evanescence My Immortal 48 45

WDVD Detroit*
PD: Greg Asham
MD: Ann Delisi
ABC/Disney 313-871-3030



Table with 3 columns: Rank, Title, and TW LW. Top entry: 1 Hoobastank The Reason 48 26

Monitor MODERN AC

Compiled from a national sample of data supplied by Broadcast Data Systems to Top 40 Airplay Monitor 44 modern AC stations are electronically monitored 24 hours a day 7 days a week © 2004 VNU Business Media, Inc. All rights reserved.



FOR WEEK ENDING MAY 23, 2004

Main chart table with columns: THIS WEEK, LAST WEEK, WKS. ON CHART, TITLE/IMPRINT/PROMOTION LABEL, ARTIST, TW, LW, MILLIONS, RANK. Top entry: 1 THIS LOVE 10 weeks at No. 1 MAROONS

Songs ranked by number of detections. Songs showing an increase in detections over the previous week, regardless of chart movement. A song will also receive a bullet if its percentage loss in detections does not exceed the percentage of monitored station downtime for the format.

GREATEST GAINERS MODERN AC

Table listing Greatest Gainers with columns: Song Title, Station, and Increase in Detections. Top entry: COUNTING CROWS • Accidentally In Love (DreamWorks/Geffen) +142

IMPACT!



Nielsen Broadcast Data Systems

Songs posting gains in detections or with a percentage loss in detections equal to or better than the monitored downtime percentage in the format. Songs listed in order of detections. *Indicates station experienced between 24 and 56 hours of monitored downtime during the chart week.

TOP 10 BOUND

AVRIL LAVIGNE 1660/141

Don't Tell Me (Arista/RMG) Total Stations: 69 Chart Move: 15-13 H (26), M (26), L (17) Airplay Adds: 4

Table with columns for city, station, and chart position for Avril Lavigne's 'Don't Tell Me'.

COUNTING CROWS 1639/286

Accidentally In Love (DreamWorks/Geffen) Total Stations: 81 Chart Move: 18-14 H (13), M (46), L (22) Airplay Adds: 5

Table with columns for city, station, and chart position for Counting Crows' 'Accidentally In Love'.

LENNY KRAVITZ 1525/82

Where Are We Runnin'? (Virgin) Total Stations: 72 Chart Move: 16-16 H (15), M (39), L (18) Airplay Adds: 1

Table with columns for city, station, and chart position for Lenny Kravitz's 'Where Are We Runnin?'.

AIRPOWER BOUND

Total Detections/Gain

SARAH MCLACHLAN 1288/54

Stupid (Arista/RMG) Total Stations: 69 Chart Move: 15-13 H (26), M (26), L (17) Airplay Adds: 4

Table with columns for city, station, and chart position for Sarah McLachlan's 'Stupid'.

AIRPLAY LEADER

(FIRST STATION TO 150 PLAYS)

KMXB • Las Vegas, NV

PD: Charese Fruge Date: 04/18/04 Also: KALC • Denver, CO



Total Stations: 70 Chart Move: 19-18 H (14), M (27), L (29) Airplay Adds: 2

Table with columns for city, station, and chart position for KMXB's Airplay Leader.

SWITCHFOOT 799/119

Meant To Live (Red Ink/Columbia) Total Stations: 45 Chart Move: 28-24 Heavy (7) KLZR, KMXB, KQKQ, KZZO, WKZN, WMBZ, WOZN Medium (20), Light (18) Airplay Adds: 4 KCDA, WKDD, WWZZ, WZPL

311 775/141

Love Song (Maverick/Volcano/Zomba) Total Stations: 42 Chart Move: 29-25 Heavy (7) KLZR, KYIS, KYSR, WKZN, WPTE, WWZZ, WXMA Medium (16), Light (19) Airplay Adds: 1 WKSZ

FINGER ELEVEN 558/136

One Thing (Wind-up) Total Stations: 34 Chart Move: 34-29 Heavy (5) KALC, KFMB, KYIS, WKZN, WWZZ Medium (10), Light (19) Airplay Adds: 5 KRSK, WENS, WMBZ, WPTE, WTSS

JASON MRAZ 501/159

Curbside Prophet (Elektra/Atlantic) Total Stations: 37 Chart Move: 37-30 Heavy (0) Medium (15), Light (22) Airplay Adds: 6 KAMX, KFMB, KLTG, KMXR, WMBZ, WXMA

BUTTERFLY BOUCHER 448/55

Another White Dash (A&M/Interscope) Total Stations: 31 Chart Move: 35-33 Heavy (1) WKZN Medium (13), Light (17) Airplay Adds: 4 KLLY, KPEK, WTMX, WVVR

BLINK-182 414/84

I Miss You (Geffen) Total Stations: 25 Chart Move: 38-36 Heavy (4) KFMB, KLZR, WKZN, WOZN Medium (6), Light (15) Airplay Adds: 4 KLLY, KLZR, KQMB, KYIS

UNCLE KRACKER 346/218

Rescue (Lava) Total Stations: 40 Chart Move: Debut 37 Heavy (1) KYIS Medium (8), Light (31) Airplay Adds: 15 KALC, KAMX, KBBY, KDMX, KIZS, KLTG, KPEK, KPLZ, KSII, KVUU, WINK, WJLK, WMC, WRQQ, WWWW

THE CORRS 314/6

Summer Sunshine (143/Atlantic) Total Stations: 27 Chart Move: Debut 39 Heavy (0) Medium (9), Light (18) Airplay Adds: 2 KLTG, WINK

CHART BOUND

Total Detections/Gain

MARIA MENA 282/52

You're The Only One (Columbia) Total Stations: 21 Chart Move: 25-21 Heavy (1) WKZN Medium (9), Light (11) Airplay Adds: 5 KBBY, KPEK, KRSK, KZZO, WINK

NICKELBACK 214/126

Feelin' Way Too Damn Good (Roadrunner/IDJMG) Total Stations: 18 Chart Move: 27-23 Heavy (0) Medium (5), Light (13) Airplay Adds: 9 KALZ, KKPN, KLLC, KLLY, KQIS, KSII, KVUU, WCDA, WKRR

PAT MCGEE BAND 195/12

Beautiful Ways (Radar) (Warner Bros.) Total Stations: 18 Chart Move: 28-24 Heavy (2) KLZR, WWZZ Medium (2), Light (14) Airplay Adds: 1 WPTE

TRAIN 194/175

Ordinary (Aware/Columbia) Total Stations: 25 Chart Move: 19-15 Heavy (1) WKZN Medium (3), Light (21) Airplay Adds: 9 KKPN, KPLZ, KQKQ, WCDA, WKRR, WKZN, WOZN, WTMX, WZPL

MERCYME 177/28

Here With Me (INO/Curb) Total Stations: 15 Chart Move: 15-11 Heavy (0) Medium (5), Light (10)

AVION 168/8

Seven Days Without You (Console) Total Stations: 17 Chart Move: 17-13 Heavy (1) WTSS Medium (0), Light (16) Airplay Adds: 3 KALC, KPEK, WKDD

BEYONCE 125/23

Naughty Girl (Columbia) Total Stations: 5 Chart Move: 5-1 Heavy (3) WBMX, WKRR, WZPL Medium (0), Light (2)

RICHARD MARX 124/119

When You're Gone (Manhattan/EMC) Total Stations: 16 Chart Move: 16-12 Heavy (0) Medium (0), Light (16) Airplay Adds: 12 KAMX, KEZR, KIOI, KKPN, KSII, KYIS, WKDD, WMMX, WRFY, WSNE, WTSS, WWWW

USHER FEAT. LIL JON & LUDACRIS 113/12

Yeah! (LaFace/Zomba) Total Stations: 9 Chart Move: 9-5 Heavy (2) KIZS, WKRR Medium (1), Light (6) Airplay Adds: 1 KRSK

NELLY FURTADO 110/20

Try (DreamWorks/Interscope) Total Stations: 7 Chart Move: 7-3 Heavy (2) KSTZ, KYIS Medium (0), Light (5)

MELISSA ETHERIDGE 66/39

This Moment (Island/IDJMG) Total Stations: 9 Chart Move: 9-5 Heavy (0) Medium (1), Light (8) Airplay Adds: 4 KALC, KMXB, KSII, WCDA

BRITNEY SPEARS 64/47

Everytime (Jive/Zomba) Total Stations: 6 Chart Move: 6-2 Heavy (0) Medium (2), Light (4) Airplay Adds: 3 KFMB, WNNK, WWWW

JOSS STONE 62/4

Fell In Love With A Boy (S-Curve/EMC) Total Stations: 7 Chart Move: 7-3 Heavy (0) Medium (2), Light (5) Airplay Adds: 1 KVUU

DAVE MATTHEWS 52/51

Oh (RCA/RMG) Total Stations: 7 Chart Move: 7-3 Heavy (0) Medium (1), Light (6) Airplay Adds: 3 WTMX, WWZZ, WXMA

LIONEL RICHIE 50/11

Just For You (Island/IDJMG) Total Stations: 6 Chart Move: 6-2 Heavy (1) KIOI Medium (0), Light (5) Airplay Adds: 1 WRMF

BOB SCHNEIDER 43/20

Come With Me Tonight (Shockorama/Vanguard) Total Stations: 5 Chart Move: 5-1 Heavy (0) Medium (1), Light (4) Airplay Adds: 3 KKPN, KQIS, WCDA

JOHN MAYER 38/4

Daughters (Aware/Columbia) Total Stations: 1 Chart Move: 1-0 Heavy (1) KMXB Medium (0), Light (0)

BLACK EYED PEAS 36/19

Hey Mama (A&M/Interscope) Total Stations: 3 Chart Move: 3-1 Heavy (1) KFMB Medium (0), Light (2)

OWSLEY 34/8

Be With You (Lakeview) Total Stations: 3 Chart Move: 3-1 Heavy (0) Medium (2), Light (1)

CLAY AIKEN 32/14

The Way (RCA/RMG) Total Stations: 7 Chart Move: 7-3 Heavy (0) Medium (1), Light (6)

STAINED 31/6

Zoe Jane (Filip/Elektra/Atlantic) Total Stations: 2 Chart Move: 2-0 Heavy (0) Medium (1), Light (1)

KEVIN PAAP 31/2

My Heart Is Here (Rockstar) Total Stations: 1 Chart Move: 1-0 Heavy (1) WKTI Medium (0), Light (0)

PRINCE 31/1

Musicology (NPG/Columbia) Total Stations: 1 Chart Move: 1-0 Heavy (1) KMXB Medium (0), Light (0)

JENNIFER MARKS 27/15

Live (Bardic) Total Stations: 6 Chart Move: 6-2 Heavy (0) Medium (0), Light (6) Airplay Adds: 1 KPEK

RACHEL FULLER 27/0

Eat Me (Universal) Total Stations: 2 Chart Move: 2-0 Heavy (0) Medium (1), Light (1)

H=Heavy (30+ Detections), M=Medium (15-29), L=Light (Under 15). Airpower awarded to songs appearing in the top 20 on both the Airplay and Audience charts for the first time with increases in both detections and audience. Initial Impact: songs appearing on this page for the first time in summary form. Airplay Adds are songs with 6 or more detections at new stations this week. The Airplay Leaderboard ranks taste-maker stations that have been the most successful in identifying future hit songs as measured by the amount of AIRPOWER titles for which they were Airplay Leaders. Refer to each format's Power Playlists page to see this week's Airplay Leaders. ☆ indicates title earned HitPredictor status in research data provided by Promosquad.

ADULT CONTEMPORARY IMPACT!

AIRPLAY Monitor

Nielsen Broadcast Data Systems

Songs posting gains in detections or with a percentage loss in detections equal to or better than the monitored downtime percentage in the format. Songs listed in order of detections.

*Indicates station experienced between 24 and 56 hours of monitored downtime during the chart week.

TOP 10 BOUND

LIONEL RICHIE

Just For You (Island/IDJMG)

1098/8

Table with columns: Market, Station, Airplay, Detections, Gain. Includes stations like WHTL, WTTW, WKBD, etc.

3 DOORS DOWN

Here Without You (Republic/Universal/UMRG)

745/30

Table with columns: Market, Station, Airplay, Detections, Gain. Includes stations like WHTL, WTTW, WKBD, etc.

WILSON PHILLIPS

Go Your Own Way (Columbia)

673/73

Table with columns: Market, Station, Airplay, Detections, Gain. Includes stations like WHTL, WTTW, WKBD, etc.

MAROONS

This Love (Octone/JIRMG)

609/106

Table with columns: Market, Station, Airplay, Detections, Gain. Includes stations like WHTL, WTTW, WKBD, etc.

AIRPOWER

KIMBERLEY LOCKE

8th World Wonder (Curb)

AIRPLAY LEADER

KBIG • Los Angeles, CA PD: Dave Denes MD: Robert Archer Date: 04/25/04

Chart Move: 18-20 Airplay Adds: 5

Table with columns: Market, Station, Airplay, Detections, Gain. Includes stations like WHTL, WTTW, WKBD, etc.

AIRPOWER BOUND

WYNONNA

I Want To Know What Love Is (Curb)

789/411

Chart Move: 23-14 Airplay Adds: 3

MERCYME

Here With Me (INO/Curb)

465/39

Chart Move: 22-21 Airplay Adds: 1

JESSICA SIMPSON

Take My Breath Away (Columbia)

359/14

Chart Move: 24-23 Airplay Adds: 2

EVANESCENCE

My Immortal (Wind-up)

344/21

Chart Move: 25-24 Airplay Adds: 3

JIM BRICKMAN

Til I See You Again (Windham Hill/RCA Victor)

316/28

Chart Move: 26-26 Airplay Adds: 2

NORAH JONES

Sunrise (Blue Note/EMC)

218/41

Chart Move: 29-28 Airplay Adds: 2

AIRPLAY Monitor DANCE

Compiled from a national sample of data supplied by Broadcast Data Systems to Top 40 Airplay Monitor. 9 dance stations are electronically monitored 24 hours a day, 7 days a week. © 2004 VNU Business Media, Inc. All rights reserved.

Main Dance chart table with columns: THIS WEEK, LAST WEEK, WKS. ON CHART, TITLE/IMPRINT/PROMOTION LABEL, ARTIST, TW, LW. Includes entries like DEJA VU, NAUGHTY GIRL, STRAIGHT AHEAD.

Songs ranked by number of detections. Songs showing an increase in detections over the previous week, regardless of chart movement. A song will also receive a bullet if its percentage loss in detections does not exceed the percentage of monitored station downtime for the format.

DANCE POWER PLAYLISTS

FOR WEEK ENDING MAY 23, 2004

Grid of dance power playlists for various stations: WKUT New York, WPYM Miami, WQXS Boston, KKDL Dallas, KNHC Seattle, KNRJ Phoenix. Each playlist includes song titles, artists, and station logos.

H=Heavy (21+ Detections), M=Medium (14-20), L=Light (Under 14). Airpower awarded to songs appearing in the top 20 on both the Airplay and Audience charts for the first time with increases in both detections and audience. *Initial impact: songs appearing on this page for the first time in summary form. Airplay Adds are songs with 6 or more detections at new stations this week.

Main chart table with columns: THIS WEEK, LAST WEEK, WKS. ON CHART, TITLE/IMPRINT/PROMOTION LABEL, ARTIST, DETECTIONS (TW, LW), AUDIENCE (MILLIONS, RANK). Includes songs like 'Burn' by Usher, 'Naughty Girl' by Beyonce, etc.

Songs ranked by number of detections. (▲) Songs showing an increase in detections over the previous week, regardless of chart movement. A song will also receive a bullet if its percentage loss in detections does not exceed the percentage of monitored station downtime for the format.

most airplay adds RHYTHMIC TOP 40

NEW STATIONS

HOUSTON FEATURING CHINGY, NATE DOGG & I-20 I Like That (On Point/Capitol) 21

KCAQ, KDGS, KDON, KIKI, KKSS, KKWD, KKOX, KLUC, KSTE, KUBE, KXJM, KXME, KYLZ, KZFM, KZZP, WBTS, WKPO, WLYD, WWKX, WXIS, XHTZ

Total Stations With Six Or More Detections: 33 TOTAL DETECTIONS BY DAYPART: 6-10 7%, 10-3 15%, 3-7 19%, 7-12 26%, 12-6A 33%

KANYE WEST Jesus Walks (Roc-A-Fella/Def Jam/IDJMG) 11

KBBT, KDOB, KDGS, KOHT, KQBT, KSFM, KUBE, KYWL, WKHT, WNVZ, WWKL

Total Stations With Six Or More Detections: 34 TOTAL DETECTIONS BY DAYPART: 6-10 7%, 10-3 17%, 3-7 19%, 7-12 24%, 12-6A 34%

LIL' FLIP FEATURING LEA Sunshine (Sucka Free/Columbia/SUM) 10

KBBT, KBFM, KBOS, KBTQ, KDGS, KIKI, KPRR, WKHT, WRED, WYIL

Total Stations With Six Or More Detections: 17 TOTAL DETECTIONS BY DAYPART: 6-10 6%, 10-3 19%, 3-7 18%, 7-12 30%, 12-6A 27%

BRANDY FEATURING KANYE WEST Talk About Our Love (Atlantic) 8

KBFM, KIKI, KYWL, WBTT, WKPO, WKTU, WPYO, WRVZ

Total Stations With Six Or More Detections: 31 TOTAL DETECTIONS BY DAYPART: 6-10 9%, 10-3 10%, 3-7 11%, 7-12 16%, 12-6A 54%

LLOYD BANKS On Fire (G-Unit/Interscope) 7

KBFM, KBTQ, KSEQ, WBBM, WKHT, WKPO, WWKL

Total Stations With Six Or More Detections: 46 TOTAL DETECTIONS BY DAYPART: 6-10 8%, 10-3 14%, 3-7 17%, 7-12 26%, 12-6A 36%

GREATEST GAINERS RHYTHMIC TOP 40

INCREASE IN DETECTIONS

OUTKAST • Roses (LaFace/Zomba) 863

WBBM +64, WYIL +62, WHZT +46, KDGS +45, KBTQ +41, WGBT +37, KQCH +36, KISV +32, KPRR +31, KQKS +30

MASE • Welcome Back (Bad Boy/UMRG) 479

WRDW +74, WPOW +67, WYIL +40, KSFM +40, WPYO +38, WKHT +34, WLLD +33, WKPO +33, CKEY +32, WRED +19

JUVENILE FEATURING SOULJA SLIM • Slow Motion (Cash Money/UMRG) 412

WGBT +54, WHZT +47, KSFM +38, KBTQ +30, KYLZ +28, KBBT +27, WRDW +24, WKPO +23, WKHT +21, WBTS +21

JAY-Z • 99 Problems (Roc-A-Fella/Def Jam/IDJMG) 395

KBBT +44, WLLD +40, XHTO +29, WBTS +26, WPYO +22, KDGS +20, KOHT +20, WRED +19, WHZT +19, KQXX +18

LLOYD BANKS • On Fire (G-Unit/Interscope) 375

WRED +40, WKHT +33, KISV +26, KBOS +23, KDGS +23, KTTB +21, KIKI +17, KBTQ +17, WWKL +17, KCAQ +16

Monitor RECURRENCTS RHYTHMIC TOP 40

Recurrents chart table with columns: RANK, TITLE, ARTIST, DETECTIONS (TW, LW). Includes songs like 'Salt Shaker' by Ying Yang Twins, 'Get Low' by Lil Jon & The East Side Boyz, etc.

Recurrents chart table with columns: RANK, TITLE, ARTIST, DETECTIONS (TW, LW). Includes songs like 'Wat Da Hook Gon Be' by Murphy Lee, 'Hey Ya!' by Outkast, etc.

Recurrents are titles that have appeared on the Rhythmic Top 40 Airplay chart for 26 weeks and have dropped below the top 20.

Monitor RHYTHMIC TOP 40 PANEL

61 STATIONS

- Albuquerque, N.M. KKSS, KYLZ, WBTS, KDHT, KQBT, KISV, KKXX, WJMN, WQXS, CKEY, WRVZ, WBBM, KZFM, KQKS
El Paso, Texas KPRR, XHTO, KBOS, KSEQ, WBTT, WLYD, WGBT, WHZT, WWKL, KDOB, KIKI, KXME, KPTY, WXIS, WKHT, WYIL
Las Vegas Little Rock, Ark. Madison, Wis. McAllen, Texas
Miami Minneapolis Monterey, Calif. New Orleans New York Norfolk, Va. Oklahoma City Omaha, Neb. Orlando, Fla. Oxnard, Calif.
Philadelphia Phoenix Portland, Maine. Portland, Ore. Providence, R.I. Riverside, Calif. Sacramento, Calif. Salt Lake City San Antonio, Texas San Diego San Francisco Seattle Spokane, Wash. Tampa, Fla. Tucson, Ariz. Wichita, Kan.

Monitor DANCE

9 STATIONS

- Boston WQSX
Dallas KKDL
Miami WPYM
New York WKTU
Phoenix KNRJ
Seattle KNHC
Music Choice DANCE
Sirius THE BEAT
XM BPM

POWER PLAYLISTS



Songs ranked by number of detections. Playlists are listed in order of TSA weekly cume, beginning with the highest-cuming station. Cumes are updated twice yearly following the release of the spring and fall Arbitron surveys. The number of stations shown each week varies depending upon space.

WBBM Chicago PD: Todd Cavanah MD: Erik Bradley Infinity 312-944-6000



Table with 2 columns: Rank and Song/Artist. Top songs include Usher Feat. Lil Jon & Lu Yeh!

WJMN Boston PD: Jack McCarty APD: Dennis O'Heron MD: Chris Tyler Clear Channel 781-663-2500



Table with 2 columns: Rank and Song/Artist. Top songs include Nina Sky Feat. Jabba Move Ya Body

KYLD San Francisco OM: Michael Martin MD: "Jazzy" Jim Archer Clear Channel 415-356-0949



Table with 2 columns: Rank and Song/Artist. Top songs include Pitbull Feat. Lil Jon & Lu Yeh!

WPOW Miami PD: Kid Curry APD: Tony The Tiger MD: Eddie Mix Beasley 305-653-6796



Table with 2 columns: Rank and Song/Artist. Top songs include Kevin Lyttle Feat. Sprag Turm Me On

WBTS Atlanta PD: Cagle APD/MD: Maverrick Cox 404-897-7500



Table with 2 columns: Rank and Song/Artist. Top songs include I-Kwon Tippy

KPTY Houston PD/MD: Marco Arias Univision 713-407-1415



Table with 2 columns: Rank and Song/Artist. Top songs include Usher Feat. Lil Jon & Lu Yeh!

KGCI Riverside PD: Jesse Duran MD: Robert "O.D.M." Gutierrez Clear Channel 909-684-1991



Table with 2 columns: Rank and Song/Artist. Top songs include Alicia Keys If I Ain't Got You

KUBE Seattle OM: Shellie Hart PD: Eric Powers MD: Karen Wild Clear Channel 206-285-2295



Table with 2 columns: Rank and Song/Artist. Top songs include Petey Pablo Feat. Lil Jon & Lu Yeh!

KSFM Sacramento PD: Byron Kennedy MD: Tony Tecate Infinity 916-920-1025



Table with 2 columns: Rank and Song/Artist. Top songs include Mario Winans Feat. Enya I Don't Wa

KQKS Denver PD: Cat Collins MD: John E. Kage Jefferson-Pilot 303-321-0950



Table with 2 columns: Rank and Song/Artist. Top songs include Petey Pablo Feat. Lil Jon & Lu Yeh!

WLLD Tampa PD: Orlando APD: Scantman MD: Beata Infinity 727-568-9870



Table with 2 columns: Rank and Song/Artist. Top songs include Usher Feat. Lil Jon & Lu Yeh!

KZZP Phoenix PD: Mark Medina APD/MD: Corina MD: Chino Clear Channel 602-279-5577



Table with 2 columns: Rank and Song/Artist. Top songs include Mario Winans Feat. Enya I Don't Wa

WRDW Philadelphia PD: Chuck Tisa APD/MD: Angel Garcia Beasley 610-667-9000



Table with 2 columns: Rank and Song/Artist. Top songs include Petey Pablo Feat. Lil Jon & Lu Yeh!

XHTZ San Diego PD: Diana Laird APD: Sonny Loco Clear Channel 619-575-9090



Table with 2 columns: Rank and Song/Artist. Top songs include Twista Overnight Celebrity

KTTB Minneapolis PD: Sam Elliott APD/MD: Zennie K Radio One 952-842-7200



Table with 2 columns: Rank and Song/Artist. Top songs include Kanye West Feat. Syleena All Falls

KBBT San Antonio OM/PD: Rick Thomas MD: Romeo Univision 210-829-1075



Table with 2 columns: Rank and Song/Artist. Top songs include Petey Pablo Feat. Lil Jon & Lu Yeh!

WNVZ Norfolk PD: Don London Entercom 757-497-2000



Table with 2 columns: Rank and Song/Artist. Top songs include Usher Burn

KXJM Portland, OR VP/Pgm: Mark Adams MD: Alexa Rose City 503-243-7955



Table with 2 columns: Rank and Song/Artist. Top songs include Kanye West Feat. Syleena All Falls

IMPACT Monitor Nielsen Broadcast Data Systems

Songs posting gains in detections or with a percentage loss in detections equal to or better than the monitored downtime percentage in the format. Songs listed in order of detections.

TOP 10 BOUND

Total Detections/Gain

ALICIA KEYS 2262/351 I Ain't Got You (J/RMG)

Total Stations: 54 Chart Move: 13-11 H (16), M (23), L (15) Airplay Adds: 1

Table with columns for station, ID, and detection counts for Alicia Keys' 'I Ain't Got You'.

AIRPLAY LEADER (FIRST STATION TO 100 PLAYS)

XHTZ • San Diego, CA PD: Diana Laird Date: 02/29/04

Also: WPOW • Miami, FL

Total Stations: 53 Chart Move: 24-14 H (8), M (26), L (19) Airplay Adds: 4

Table with columns for station, ID, and detection counts for XHTZ's 'I Ain't Got You'.



LLOYD BANKS 1167/375 On Fire (G-Unit/Interscope)

Total Stations: 54 Chart Move: 30-23 H (1), M (14), L (39) Airplay Adds: 7

Table with columns for station, ID, and detection counts for Lloyd Banks' 'On Fire'.

KANYE WEST 744/265 Jesus Walks (Roc-A-Fella/Def Jam/IDJMG)

Total Stations: 46 Chart Move: Debut 31 H (0), M (12), L (34) Airplay Adds: 11

Table with columns for station, ID, and detection counts for Kanye West's 'Jesus Walks'.

AMANDA PEREZ 1909/29 I Pray (Powerhouse/Virgin)

Total Stations: 57 Chart Move: 14-15 H (9), M (30), L (18) Airplay Adds: 0

Table with columns for station, ID, and detection counts for Amanda Perez's 'I Pray'.

RIC-A-CHE 1311/124 Coo Coo Chee (SRC/Universal/UMRG)

Total Stations: 43 Chart Move: 22-20 H (5), M (16), L (22) Airplay Adds: 3

Table with columns for station, ID, and detection counts for Ric-A-Che's 'Coo Coo Chee'.



JAY-Z 1166/395 99 Problems (Roc-A-Fella/Def Jam/IDJMG)

Total Stations: 49 Chart Move: 31-24 H (4), M (18), L (27) Airplay Adds: 5

Table with columns for station, ID, and detection counts for Jay-Z's '99 Problems'.

LLOYD FEATURING ASHANTI 738/79 Southside (The Inc./Def Jam/IDJMG)

Total Stations: 37 Chart Move: 36-32 H (0), M (15), L (22) Airplay Adds: 6

Table with columns for station, ID, and detection counts for Lloyd's 'Southside'.

JUVENILE FEATURING SOULJA SLIM 1818/412 Slow Motion (Cash Money/UMRG)

Total Stations: 41 Chart Move: 18-16 H (13), M (14), L (14) Airplay Adds: 6

Table with columns for station, ID, and detection counts for Juvenile's 'Slow Motion'.

AIRPLAY LEADER (FIRST STATION TO 100 PLAYS)

WPOW • Miami, FL PD: Kid Curry MD: Eddie Mix Date: 04/18/04

Also: WRDW • Philadelphia, PA

Total Stations: 43 Chart Move: 22-20 H (5), M (16), L (22) Airplay Adds: 3

Table with columns for station, ID, and detection counts for WPOW's 'Slow Motion'.



CASSIDY FEATURING MASHONDA 1142/188 Get No Better (Full Surface/J/RMG)

Total Stations: 50 Chart Move: 27-25 H (1), M (23), L (26) Airplay Adds: 3

Table with columns for station, ID, and detection counts for Cassidy's 'Get No Better'.

HOUSTON FEAT. CHINGY, NATE DOGG & I-20 655/354 I Like That (On Point/Capitol)

Total Stations: 48 Chart Move: Debut 34 H (1), M (7), L (40) Airplay Adds: 21

Table with columns for station, ID, and detection counts for Houston's 'I Like That'.

NB RIDAZ 1694/170 So Fly (NastyBoy/Upstairs)

Total Stations: 48 Chart Move: 17-17 H (12), M (18), L (18) Airplay Adds: 1

Table with columns for station, ID, and detection counts for NB Ridaz's 'So Fly'.

AIRPOWER BOUND

Total Detections/Gain

NINA SKY FEATURING JABBA 1297/165 Move Ya Body (Next Plateau/Universal/UMRG)

Total Stations: 52 Chart Move: 23-21 H (6), M (16), L (30) Airplay Adds: 3

Table with columns for station, ID, and detection counts for Nina Sky's 'Move Ya Body'.

PLAY-N-SKILLZ 1142/96 Freaks (PTP/Latium)

Total Stations: 34 Chart Move: 26-26 H (6), M (13), L (15) Airplay Adds: 3

Table with columns for station, ID, and detection counts for Play-N-Skillz's 'Freaks'.

BEEIN MAN FEATURING MS. THING 628/108 Dude (Shocking Vibes/Virgin)

Total Stations: 39 Chart Move: 40-36 H (2), M (8), L (29) Airplay Adds: 2

Table with columns for station, ID, and detection counts for Beein Man's 'Dude'.

AIRPOWER

Total Detections/Gain

OUTKAST 1915/863 Roses (LaFace/Zomba)

Total Stations: 50 Chart Move: 25-22 H (1), M (21), L (28) Airplay Adds: 3

Table with columns for station, ID, and detection counts for Outkast's 'Roses'.

KEVIN LYTTLE FEAT. SPRAGGA BENZ 993/115 Turn Me On (VP/Atlantic)

Total Stations: 46 Chart Move: 29-29 H (2), M (14), L (30) Airplay Adds: 2

Table with columns for station, ID, and detection counts for Kevin Lyttle's 'Turn Me On'.

MASE 615/479 Welcome Back (Bad Boy/UMRG)

Total Stations: 24 Chart Move: Debut 37 H (2), M (9), L (13) Airplay Adds: 7

Table with columns for station, ID, and detection counts for Mase's 'Welcome Back'.

JADAKISS FEATURING NATE DOGG 599/103 Time's Up! (Ruff Ryders/Interscope)

Total Stations: 45 Chart Move: Debut 39 H (0), M (9), L (36) Airplay Adds: 2

Table with columns for station, ID, and detection counts for JadaKiss's 'Time's Up!'.

MURPHY LEE FEATURING NELLY 528/103 Hold Up (Fo' Reel/Universal/UMRG)

Total Stations: 46 Chart Move: 11-11 H (0), M (15), L (31) Airplay Adds: 3

Table with columns for station, ID, and detection counts for Murphy Lee's 'Hold Up'.

SLY BOOGY 516/13 That's My Name (J/RMG)

Total Stations: 37 Chart Move: 11-11 H (0), M (15), L (22) Airplay Adds: 3

Table with columns for station, ID, and detection counts for Sly Boogy's 'That's My Name'.

AKON FEATURING STYLES P. 485/96 Locked Up (SRC/Universal/UMRG)

Total Stations: 20 Chart Move: 11-11 H (0), M (15), L (22) Airplay Adds: 1

Table with columns for station, ID, and detection counts for Akon's 'Locked Up'.

BRANDY FEATURING KANYE WEST 408/128 Talk About Our Love (Atlantic)

Total Stations: 42 Chart Move: 11-11 H (0), M (15), L (22) Airplay Adds: 1

Table with columns for station, ID, and detection counts for Brandy's 'Talk About Our Love'.

H=Heavy (55+ Detections), M=Medium (25-54), L=Light (Under 25). Airpower awarded to songs appearing in the top 20 on both the Airplay and Audience charts for the first time with increases in both detections and audience. Initial Impact: songs appearing on this page for the first time in summary form. Airplay Adds are songs with 6 or more detections at new stations this week. The Airplay Leaderboard ranks taste-maker stations that have been the most successful in identifying future hit songs as measured by the amount of AIRPOWER titles for which they were Airplay Leaders. Refer to each format's Power Playlists page to see this week's Airplay Leaders. ☆ indicates title earned HitPredictor status in research data provided by Protoniq.



Craig G Shares His Hip-Hop History On-Air At KWID Las Vegas

Proving that there is life after being an MC, Craig G recently made the transition from recording artist to on-air personality at KWID (Wild 102) Las Vegas.

The veteran MC, best-known for his appearance on the Marley Marl classic "The Symphony," is the latest artist to make the transition from one side of the microphone to the other... and from one state to another.

"I just decided it was time for a change," the native New Yorker says. "I pointed to a place and wound up in Vegas."

Once in Las Vegas, Craig G began working at the House of Blues hosting its hip-hop shows as well as a club night, Juice, on Sundays.

"When I first got here I wanted to get into radio, so I faxed a little statement to every station," Craig G says. "Two or three months after I got here, [previous KWID PD] Jammer was fired, and then they cleared everyone out."

"One of the new nighttime jocks [Bobby Loco] came to the club and told me that I needed to come to the station,"

he adds. "I went and he introduced me to T-Ski, the station's new PD, who happens to be a DJ. He thought it would be good to have a rapper on a hip-hop station and asked me if I would start that weekend. Loco taught me how to run the board, and within two days I was working on-air."

T-Ski said Craig G's background as a veteran artist was a welcome addition to the KWID on-air staff.

"Craig G is hip-hop," T-Ski says. "And Wild 102 is the home of hip-hop, so it was the perfect fit. Craig brings radio experience from his time in New York as well as a wealth of knowledge regarding the hip-hop game and lifestyle."

RAPPER GOES TO RADIO

Craig G admits that his transformation from artist to jock is a process. He credits his experience as an artist with giving him a foundation on which to work.

"The first thing was [getting] used to being on the microphone and being in the studio," he says. "After that, it's more about not being afraid to crack the mic and not having any preconceived notions or nervousness. I still have a ways to go. Sometimes, I can be repetitive, because I'm still learning. But it's a comfortable fit, and everyone there likes it up there. Everyone involved [with the station] is very impressed so far. I also get a couple of artists to call [the station]. It's like I'm almost doing the same job."

Ironically, Craig G never received much airplay for his singles. That said, his prior experiences with radio are what fueled his desire to get on-air.

"It's funny, because between my first and second singles ["Shout," "Transformer"], I used to work with Mr. Magic at WBLS [New York]," he says. "I used to pull carts and answer the phones, so I was already excited about the radio experience. Then, I worked with Marley on 'In Control.' So it was something that would have been in the cards anyway, because it was something that I really enjoyed. It takes me back to when I used to work on the radio back in the day."

As a weekender at KWID, Craig G uses his musical knowledge and industry anecdotes

to craft a show he says is unlike any other in the market.

"I know a lot about the music, so I am sure that I inform the listeners about certain songs that they hear, especially when I play a classic," Craig G says. "I might tell a story about something that I know about the artist from when I was there with them. It's pretty cool. People are calling the station like, 'Is this 'Craig G' Craig G? From 'The Symphony?'" So they're real excited. I'm blown away by that."

"We're also in one of the biggest radio wars out here," he adds. "We have two other stations out here that play hip-hop [KVEG and KCEP], so it's cool, because it brings me back to the days of Mr. Magic and Red Alert [in New York]."

In terms of programming, KWID is like most R&B/hip-hop stations, but it also plays a fair share of rhythmic records.

"We're on the West Coast so we play a lot of regional stuff," Craig G says. "[An artist like] Baby Bash is really big because there is a huge Mexican population out here."

"As far as the way the station is programmed, [T-Ski] is a great DJ so he has his ear to the street as far as that is concerned," he adds. "We have a lot of songs in the log that are pretty cool. Usually when I'm on the air, I get to play [A Tribe Called Quest's] 'Award Tour' or something like that. That is what gets me pumped."

DON'T CALL IT A COMEBACK

While his radio career is just beginning to flourish, Craig G hasn't given up all his artistic endeavors.

"I'm going to come back to New York, when I have some vacation time, to start getting the next album together, because that's my first love," he says. "I wouldn't have been able to get on the radio if it wasn't for that. So, I'm really appreciative of that."

Craig G, who was signed to the now-defunct D&D Records, believes getting a new deal will only be a matter of time.

"I'm going to wait to have a few songs recorded before pursuing a deal," he says. "It shouldn't be hard, because I'm not looking for everything under the sun. I'm just looking for a fair rate and a chance to work the record. Even with minimal sales, on the independent note, you're going to make a profit if you keep your overhead low when you're recording."

"I don't have visions of grandeur of getting independent songs played on the radio," Craig G adds. "I will let the streets decide. People come up to me now and tell me that they bought the last album. I'm still in my early 30s, so I have a few albums in me."

As for his future in radio, T-Ski and Craig G seem equally optimistic.

"That's the thing about Vegas," T-Ski says. "Right now, he's doing weekends and nights for us. We expect him to grow with us."

"At the end of the day, maybe, just maybe, I can get to the point where I can suggest some songs that I think are cool and can be added into the rotation," Craig G adds. "There are a lot of songs that are always overlooked that should be getting spins. The more I get into this, maybe I'll have some influence in [changing] that."



CRAIG G

Craig G On His Fellow MCs

With a recording career that spans almost 20 years, KWID (Wild 102) Las Vegas' Craig G (see story, at left) knows a thing or two about the art of the game. So, we asked the MC-turned-jock for his thoughts on a few of his noted contemporaries. Here's what he had to say:

Lil Jon: "He was also a radio DJ and an A&R [guy]. His experience shines through

when you hear his songs. He has his finger on the pulse of what's cracking in the clubs.

"He did what a lot of artists have tried to do in the past—he brought the club to the radio, and he fully succeeded with it. It can be 2 in the afternoon when a [Lil Jon] song comes

on and if you close your eyes, you feel like you are in the middle of a party.

"What makes him even better is that there are some people who know how to capture it, and then there are some people who know how to capture it and channel it through another artist. He has done that with a lot of artists."

Kanye West: "He has brought back the missing soul element as far as hip-hop is concerned. As soon you hear his music, you feel it flow through you."

He takes you on a journey with his music.

"What I really respect about Kanye is that my mother always told me when I was doing songs to say something that means something. With his album, he makes a lot of valid points and says things that he really didn't have to say at this day and time in hip-hop, but he did, and it's successful. I really respect that."

Twista: "Twista is the ultimate sign of perseverance. It seems like no matter what he has been trying for the longest."

"A lot of people don't know that he was one of the first artists signed to the now-defunct Loud label. He goes back that far. So for him to go from then to now and still have a successful album with everyone having his back is respect, because this is a young kid's game. A lot of people would have said forget it, but he stuck with it, because he knew he had the talent. And now it's paying off."

Dilated Peoples, Slum Village: "It's real easy to come out with a song and say the same thing that everybody else is saying. So, what impresses me as a rapper is when acts like Dilated Peoples and Slum Village come in and follow their own beliefs and feelings and the rest of the world goes along with it."

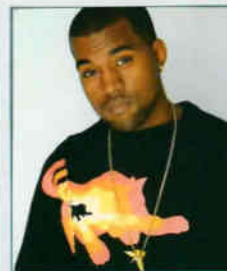
"Dilated Peoples, even before the Kanye [West] track ["This Way"], always got me, because they're rapper's rappers. But they also found the fine line between making a radio-friendly song and being hip-hop."



LIL JON



TWISTA



WEST

RADIO CONCERT MONITOR

DATE	STATION	EVENT	PROMOTIONS DIRECTOR
June 12	WQHT New York	Summer Jam	Kevin Cox
APPEARING: Alicia Keys, Big Boi of OutKast, Kanye West, Lil Jon & the East Side Boyz, Ying Yang Twins, Jadakiss			

Let us monitor your event! Call Rashaun Hall at 646-654-4679 or e-mail rhall@airplaymonitor.com

Brandy Is Back



Brandy visited WBLS New York to promote current single "Talk About Our Love" and her forthcoming Atlantic album, "Afrodisiac." The singer also took a moment to pose with PD Vinny Brown.

WILD 102

R&B/HIP-HOP

POWERPLAYS



Songs ranked by number of detections. Playlists are listed in order of TSA weekly cume, beginning with the highest-cuming station. Cumes are updated twice weekly following the release of the spring and fall Arbitron surveys. The number of stations shown each week varies depending upon space.

Nielsen Broadcast Data Systems denotes songs with 6 or more detections at station for first time this week.

WQHT New York
VP/Pgm: Tracy Clorhy
APD/MD: E-Br
Emmis 212-229-9797

KPWR Los Angeles
Dir/Pgm: Damon Young
APD/MD: E-man
Emmis 818-953-4200

WWPR New York
PD: Michael Saunders
MD: Mara Melendez
Clear Channel 212-704-1051

KKBT Los Angeles
PD: Robert Scorpio
MD: Tawala Sharp
Radio One 323-634-1800

WBL5 New York
PD: Vinny Brown
MD: Deneen Womack
Inner City 212-447-1000

WGCI Chicago
OM: Eloy R.C. Smith
APD/MD: Tiffany Green
Clear Channel 312-540-2000

Table with 2 columns: Rank and Song/Artist. Includes tracks like 'Twista Overnight Celebrity', 'D12 My Band', 'Alicia Keys If I Ain't Got You'.

Table with 2 columns: Rank and Song/Artist. Includes tracks like 'Mario Winans Featuring Enya I Don't Wa', 'Petey Pablo Freak-A-Leek', 'Nina Sky Featuring Syleena All Falls'.

Table with 2 columns: Rank and Song/Artist. Includes tracks like 'Usher Burn', 'Alicia Keys If I Ain't Got You', 'Nina Sky Featuring Syleena All Falls'.

Table with 2 columns: Rank and Song/Artist. Includes tracks like 'Petey Pablo Freak-A-Leek', 'Twista Overnight Celebrity', 'Usher Burn', 'Alicia Keys If I Ain't Got You'.

Table with 2 columns: Rank and Song/Artist. Includes tracks like 'Avant Don't Take Your Love Away', 'Mario Winans Featuring Enya I Don't Wa', 'Usher Burn'.

Table with 2 columns: Rank and Song/Artist. Includes tracks like 'Usher Confessions Part II', 'Mario Winans Featuring Enya I Don't Wa', 'Kanye West The New Workout Plan'.

WPGC Washington, DC
VP/Pgm: Jay Stevens
OM: Reggie Rose
MD: Sarah O'Connor
Infinity 301-918-0955

WUSL Philadelphia
Dir/Pgm: Thea Mitchem
MD: Coka-Lani
Clear Channel 215-483-8900

WVEE Atlanta
PD: Tony Brown
APD/MD: Tasha Love
Infinity 404-898-8900

KBXX Houston
OM: Tom Calococco
MD: Carmen Contreras
Radio One 713-623-2108

WKYS Washington, DC
PD: Darryl Huckabay
MD: DJ Iran
Radio One 301-306-1111

WPWX Chicago
PD: Jay Alan
MD: Barbara McDowell
Crawford 773-734-4455

Table with 2 columns: Rank and Song/Artist. Includes tracks like 'Usher Confessions Part II', 'Alicia Keys Featuring Tony! Diary', 'Usher Burn'.

Table with 2 columns: Rank and Song/Artist. Includes tracks like 'Usher Burn', 'Twista Overnight Celebrity', 'Alicia Keys Featuring Tony! Diary'.

Table with 2 columns: Rank and Song/Artist. Includes tracks like 'Petey Pablo Freak-A-Leek', 'Usher Confessions Part II', 'Usher Burn'.

Table with 2 columns: Rank and Song/Artist. Includes tracks like 'Usher Confessions Part II', 'Juvenile Featuring Soujia Si Slow Mobo', 'Kylie E.I. (Remembrance)'.

Table with 2 columns: Rank and Song/Artist. Includes tracks like 'Petey Pablo Freak-A-Leek', 'Twista Overnight Celebrity', 'Alicia Keys Featuring Tony! Diary'.

Table with 2 columns: Rank and Song/Artist. Includes tracks like 'R. Kelly Happy People', 'Twista Overnight Celebrity', 'Mario Winans Featuring Enya I Don't Wa'.

KMEL San Francisco
OM: Michael Martin
APD: "Jazzy" Jim Archer
MD: Big Von Johnson
Clear Channel 415-538-1061

WILB Detroit
Dir/Pgm: K.J. Holiday
APD/MD: Kris Kelly
Clear Channel 313-965-2000

KKDA Dallas
PD: Skip Cheatham
Service 972-263-9911

KBFB Dallas
PD: John Candelaria
MD: Big Bink
Radio One 972-331-5400

WEDR Miami
PD/MD: Cedric Hollywood
AM: Shelby Ruslin
Cox 305-623-7711

WDTJ Detroit
PD: Charles "Spudd" Spence
Radio One 313-259-2000

Table with 2 columns: Rank and Song/Artist. Includes tracks like 'Usher Confessions Part II', 'Alicia Keys If I Ain't Got You', 'Usher Burn'.

Table with 2 columns: Rank and Song/Artist. Includes tracks like 'Usher Confessions Part II', 'Petey Pablo Freak-A-Leek', 'Slum Village Featuring Kanye Seifish'.

Table with 2 columns: Rank and Song/Artist. Includes tracks like 'Lil' Flip Game Over (Flip)', 'Usher Confessions Part II', 'Juvenile Featuring Soujia Si Slow Mobo'.

Table with 2 columns: Rank and Song/Artist. Includes tracks like 'Mario Winans Featuring Enya I Don't Wa', 'Petey Pablo Freak-A-Leek', 'Juvenile Featuring Soujia Si Slow Mobo'.

Table with 2 columns: Rank and Song/Artist. Includes tracks like 'Twista Overnight Celebrity', 'Kanye West Featuring Syleena All Falls', 'Usher Burn'.

Table with 2 columns: Rank and Song/Artist. Includes tracks like 'Mario Winans Featuring Enya I Don't Wa', 'Petey Pablo Freak-A-Leek', 'Twista Overnight Celebrity'.



Songs ranked by number of detections. Playlists are listed in order of TSA weekly cume, beginning with the highest-cumming station. Cumes are updated twice yearly following the release of the spring and fall Arbitron surveys. The number of stations shown each week varies depending on space.

Nielsen Broadcast Data Systems

denotes songs with 6 or more detections at station for first time this week.

WMIB Miami PD: Dion Summers MD: Darnella Dunham Clear Channel 954-862-2000

WPHI Philadelphia PD: Colby Colb APD/MD: Raphael George Radio One 215-884-9400

WHTA Atlanta PD: Jerry Smokin' B APD: Dimitrios Stevens MD: Ramona DeBreaux Radio One 404-765-9750

WERQ Baltimore PD: Victor Starr MD: Neke Howse Radio One 410-332-8200

WJHM Orlando PD: Steve Delando APD: Keith Memoly MD: Jay Love Infinity 407-919-1000

WZMX Hartford PD: DJ Buck MD: David Simpson Infinity 860-677-6700

Table with 2 columns: Rank and Song/Artist. Top songs include Juvenile Feat. Souja Si Slow Moto, Kanye West Feat. Syleena All Falls, and Twista Overnight Celebrity.

Table with 2 columns: Rank and Song/Artist. Top songs include Young Gunz Friday Night, Twista Overnight Celebrity, and Beyonce Naughty Girl.

Table with 2 columns: Rank and Song/Artist. Top songs include Lil' Flip Game Over (Flip), Petey Pablo Freek-A-Leek, and Kanye West Feat. Syleena All Falls.

Table with 2 columns: Rank and Song/Artist. Top songs include Usher Confessions Part II, Usher Burn, and Alicia Keys If I Ain't Got You.

Table with 2 columns: Rank and Song/Artist. Top songs include Usher Confessions Part II, Usher Featuring Lil' Jon & Lu Yeh!, and Petey Pablo Freek-A-Leek.

Table with 2 columns: Rank and Song/Artist. Top songs include Usher Confessions Part II, Akon Featuring Styles P. Locked Up, and Kanye West Feat. Syleena All Falls.

KKFR Phoenix PD: Bruce St. James MD: Joey Boy MD: J Philla Emmis 602-274-6200

WJMH Greensboro DM/MD: Brian Douglas MD: Tap Money Entercom 336-605-5200

WQVE New Orleans DM: Carla Boatner PD/MD: Uptown Angela Clear Channel 504-679-7300

WQOK Raleigh DM: Cy Young MD: Shawn Alexander Radio One 919-848-9736

WPEG Charlotte DM: Terry Avery MD: Deon Cole Infinity 704-333-0131

WENZ Cleveland PD: Kim Johnson MD: Eddie Bauer Radio One 216-579-1111

Table with 2 columns: Rank and Song/Artist. Top songs include Petey Pablo Freek-A-Leek, Usher Featuring Lil' Jon & Lu Yeh!, and Twista Overnight Celebrity.

Table with 2 columns: Rank and Song/Artist. Top songs include Petey Pablo Freek-A-Leek, Lil' Flip Game Over (Flip), and Twista Overnight Celebrity.

Table with 2 columns: Rank and Song/Artist. Top songs include Usher Confessions Part II, Lil' Flip Game Over (Flip), and Twista Overnight Celebrity.

Table with 2 columns: Rank and Song/Artist. Top songs include Twista Overnight Celebrity, Usher Burn, and Mario Winans Featuring Enya I Don't Wa.

Table with 2 columns: Rank and Song/Artist. Top songs include Juvenile Featuring Souja Si Slow Moto, Usher Confessions Part II, and Alicia Keys If I Ain't Got You.

Table with 2 columns: Rank and Song/Artist. Top songs include Twista Overnight Celebrity, Kanye West Feat. Syleena All Falls, and Mario Winans Featuring Enya I Don't Wa.

WHRK Memphis PD: Nate Bell APD: Eileen Collier MD: Devin Steel Clear Channel 901-529-4300

WBTP Tampa PD: Ron "Jomama" Shepard MD: Stu Robinson Clear Channel 813-832-1000

WUBT Nashville PD: Pamela Anise Clear Channel 615-664-2400

WOWI Norfolk DM: Eric Mychaels PD/MD: DJ Law Clear Channel 757-466-9116

WBOT Boston PD/MD: Lamar Robinson Radio One 617-427-2222

KPRS Kansas City DM: Andre Carson PD: Myron O. Carter 816-763-2040

Table with 2 columns: Rank and Song/Artist. Top songs include Juvenile Featuring Souja Si Slow Moto, Usher Confessions Part II, and Alicia Keys If I Ain't Got You.

Table with 2 columns: Rank and Song/Artist. Top songs include Alicia Keys If I Ain't Got You, Twista Overnight Celebrity, and Usher Burn.

Table with 2 columns: Rank and Song/Artist. Top songs include Usher Burn, Twista Overnight Celebrity, and Alicia Keys If I Ain't Got You.

Table with 2 columns: Rank and Song/Artist. Top songs include Kanye West Feat. Syleena All Falls, Twista Overnight Celebrity, and Usher Burn.

Table with 2 columns: Rank and Song/Artist. Top songs include Petey Pablo Freek-A-Leek, Usher Burn, and Alicia Keys If I Ain't Got You.

Table with 2 columns: Rank and Song/Artist. Top songs include Usher Confessions Part II, Kanye West Feat. Syleena All Falls, and Usher Burn.

denotes songs with 6 or more detections at station for first time this week.

POWERPLAYISTS

KBMB Sacramento PD: J.R. Johnson APD: Tosh Jackson Diamond 916-440-9500



WPHH Hartford PD: Nicole S. Clear Channel 860-723-6041



WCXK Columbus PD: Paul Strong MD: Warren Stevens APD: Theresa Terry Radio One 614-487-1444



Table with columns TW, LW, and song titles for KBMB Sacramento. Includes songs like 'Kanye West Featuring Syleena All Falls' and 'Alicia Keys If I Ain't Got You'.

Table with columns TW, LW, and song titles for WPHH Hartford. Includes songs like 'Usher Confessions Part II' and 'Lil' Flip Game Over (Flip)'.

Table with columns TW, LW, and song titles for WCXK Columbus. Includes songs like 'Kanye West Featuring Syleena All Falls' and 'Twista Overnight Celebrity'.

KATZ St. Louis VP Operations/PD: Chuck Atkins APD: Dwight Stone Clear Channel 314-692-5108



WMBX West Palm Beach, Fla. PD: Mark McCray MD: DJ X-Cel Infinity 561-686-9505



WBHJ Birmingham QM: Jay Dixon PD: Mickey Johnson APD/MD: Mary K. Cox 205-322-2987



Table with columns TW, LW, and song titles for KATZ St. Louis. Includes songs like 'Usher Confessions Part II' and 'Lil' Flip Game Over (Flip)'.

Table with columns TW, LW, and song titles for WMBX West Palm Beach, Fla. Includes songs like 'Usher Confessions Part II' and 'Mario Winans Featuring Enya I Don't Wa'.

Table with columns TW, LW, and song titles for WBHJ Birmingham. Includes songs like 'Usher Confessions Part II' and 'Petey Pablo Freestyle A-Leek'.

WZFX Fayetteville PD: Jeff Anderson APD: Mike Tech MD: Crystal Gaskill Beasley 910-486-4991



WHHH Indianapolis PD: Brian Wallace MD: Wreck 1 Radio One 317-266-9600



WKKV Milwaukee PD: Doc Love MD: Bailey Coleman Clear Channel 414-321-1007



Table with columns TW, LW, and song titles for WZFX Fayetteville. Includes songs like 'Petey Pablo Freestyle A-Leek' and 'Mario Winans Featuring Enya I Don't Wa'.

Table with columns TW, LW, and song titles for WHHH Indianapolis. Includes songs like 'Petey Pablo Freestyle A-Leek' and 'Twista Overnight Celebrity'.

Table with columns TW, LW, and song titles for WKKV Milwaukee. Includes songs like 'Twista Overnight Celebrity' and 'Kanye West Featuring Syleena All Falls'.

Compiled from a national sample of data supplied by Broadcast Data Systems to Airplay Monitor. 95 R&B/Hip-Hop and 61 Rhythmic Top 40 stations are electronically monitored 24 hours a day, 7 days a week.

Main Airplay Monitor table with columns THIS WEEK, LAST WEEK, WKS. ON CHART, TITLE/IMPRINT/PROMOTION LABEL, ARTIST, TW, LW, MILLIONS, RANK, AUDIENCE. Includes top songs like 'OVERNIGHT CELEBRITY' and '99 PROBLEMS'.

Songs ranked by number of detections. (N) Songs showing an increase in detections over the previous week, regardless of chart movement.

GREATEST GAINERS RAP

Table listing 'GREATEST GAINERS' in RAP. Includes songs like 'MASE • Welcome Back', 'OUTKAST • Roses', 'LLOYD BANKS • On Fire', etc.

IMPACT! AIRPLAY Monitor Nielsen Broadcast Data Systems

Songs posting gains in detections or with a percentage loss in detections equal to or better than the monitored downtime percentage in the format. Songs listed in order of detections. *Indicates station experienced between 24 and 56 hours of monitored downtime during the chart week.

TOP 10 BOUND

KANYE WEST 2493/426 Jesus Walks (Roc-A-Fella/Def Jam/IDJMG) ☆ Total Stations: 93 Chart Move: 16-11 H (16), M (26), L (51) Airplay Adds: 3

Table with columns for city, station, and song/detection data for Kanye West's 'Jesus Walks'.

OUTKAST 2451/92 Roses (LaFace/Zomba) ☆ Total Stations: 84 Chart Move: 14-13 H (10), M (39), L (35) Airplay Adds: 2

Table with columns for city, station, and song/detection data for Outkast's 'Roses'.

LLOYD BANKS 2431/501 On Fire (G-Unit/Interscope) Total Stations: 93 Chart Move: 18-14 H (12), M (33), L (48) Airplay Adds: 9

Table with columns for city, station, and song/detection data for Lloyd Banks' 'On Fire'.

BRANDY FEATURING KANYE WEST 1650/345 Talk About Our Love (Atlantic) ☆ Total Stations: 89 Chart Move: 23-21 H (2), M (26), L (61) Airplay Adds: 13

Table with columns for city, station, and song/detection data for Brandy's 'Talk About Our Love'.

AIRPOWER

MONICA 1983/343 U Should've Known Better (J/RMG) ☆ Total Stations: 72 Chart Move: 19-18 H (13), M (24), L (35) Airplay Adds: 1

AIRPLAY LEADER (FIRST STATION TO 150 PLAYS) KPRS • Kansas City, MO PD: Myron D Date: 03/28/04

Table with columns for city, station, and song/detection data for Monica's 'U Should've Known Better'.

AIRPOWER BOUND

JADAKISS FEATURING NATE DOGG 1711/230 Time's Up! (Ruff Ryders/Interscope) Total Stations: 93 Chart Move: 21-19 H (3), M (25), L (65) Airplay Adds: 3

Table with columns for city, station, and song/detection data for Jadakiss' 'Time's Up!'.

MOBB DEEP 1159/118 Got It Twisted (Violator/Jive/Zomba) Total Stations: 80 Chart Move: 33-27 H (2), M (12), L (66) Airplay Adds: 7

Table with columns for city, station, and song/detection data for Mobb Deep's 'Got It Twisted'.

8BALL & MJG FEAT. P. DIDDY 1512/305 You Don't Want Drama (Bad Boy/UMRG) Total Stations: 74 Chart Move: 26-22 H (7), M (20), L (47) Airplay Adds: 2

Table with columns for city, station, and song/detection data for 8Ball & MJG's 'You Don't Want Drama'.

LLOYD FEATURING ASHANTI 1497/244 Southside (The Inc./Def Jam/IDJMG) Total Stations: 79 Chart Move: 25-23 H (2), M (25), L (52) Airplay Adds: 5

Table with columns for city, station, and song/detection data for Lloyd's 'Southside'.

NINA SKY FEATURING JABBA 1294/150 Move Ya Body (Next Plateau/Universal/UMRG) Total Stations: 76 Chart Move: 27-25 H (5), M (17), L (54) Airplay Adds: 6

Table with columns for city, station, and song/detection data for Nina Sky's 'Move Ya Body'.

MOBB DEEP 1159/118 Got It Twisted (Violator/Jive/Zomba) Total Stations: 80 Chart Move: 33-27 H (2), M (12), L (66) Airplay Adds: 7

Table with columns for city, station, and song/detection data for Mobb Deep's 'Got It Twisted'.

Table with columns for city, station, and song/detection data for various artists including Jay-Z.

JAY-Z 929/103 99 Problems (Roc-A-Fella/Def Jam/IDJMG) ☆ Total Stations: 79 Chart Move: Debut 36 H (2), M (9), L (68) Airplay Adds: 4

Table with columns for city, station, and song/detection data for Jay-Z's '99 Problems'.

YING YANG TWINS FEAT. TRICK DADDY 1159/123 Whats Happnin' (Collipark/TVT) Total Stations: 66 Chart Move: 34-28 H (5), M (15), L (46) Airplay Adds: 5

Table with columns for city, station, and song/detection data for Ying Yang Twins' 'Whats Happnin''.

BEENIE MAN FEAT. MS. THING 1127/49 Dude (Shocking Vibes/Virgin) Total Stations: 70 Chart Move: 32-29 H (4), M (14), L (52) Airplay Adds: 0

Table with columns for city, station, and song/detection data for Beenie Man's 'Dude'.

SLUM VILLAGE 975/38 Selfish (Barak/Capitol) Total Stations: 62 Chart Move: 40-34 H (1), M (11), L (50) Airplay Adds: 3

Table with columns for city, station, and song/detection data for Slum Village's 'Selfish'.

MONITORING STATIONS: Includes lists of stations for various cities like New York, LA, Chicago, etc.

JAY-Z 929/103 99 Problems (Roc-A-Fella/Def Jam/IDJMG) ☆ Total Stations: 79 Chart Move: Debut 36 H (2), M (9), L (68) Airplay Adds: 4

Table with columns for city, station, and song/detection data for Jay-Z's '99 Problems'.

MASE 912/665 Welcome Back (Bad Boy/UMRG) Total Stations: 64 Chart Move: Debut 37 H (1), M (12), L (51) Airplay Adds: 25

Table with columns for city, station, and song/detection data for Mase's 'Welcome Back'.

LIL WAYNE FEAT. MANNIE FRESH 717/27 Bring It Back (Cash Money/UMRG) Total Stations: 58 Chart Move: 18-14 H (12), M (33), L (48) Airplay Adds: 9

Table with columns for city, station, and song/detection data for Lil Wayne's 'Bring It Back'.

HOUSTON FEAT. CHINGY, NATE DOGG & I-20 568/329 I Like That (On Point/Capitol) Total Stations: 58 Chart Move: 18-14 H (12), M (33), L (48) Airplay Adds: 9

Table with columns for city, station, and song/detection data for Houston's 'I Like That'.

H-Heavy (45+ Detections), M=Medium (25-44), L=Light (Under 25). Airpower awarded to songs appearing in the top 20 on both the Airplay and Audience charts for the first time with increases in both detections and audience. ☆ Initial Impact: songs appearing on this page for the first time in summary form. Airplay adds are songs with 5 or more detections at new stations this week. The Airplay Leaderboard ranks taste-maker stations that have been the most successful in identifying future hit songs as measured by the amount of AIRPOWER titles for which they were Airplay Leaders. Refer to each format's Power Playlists page to see this week's Airplay Leaders. ☆ indicates title earned HitPredictor status in research data provided by Promosquad.

IMPACT!



Nielsen
Broadcast Data
Systems

Songs posting gains in detections or with a percentage loss in detections equal to or better than the monitored downtime percentage in the format. Songs listed in order of detections.

*Indicates station experienced between 24 and 56 hours of monitored downtime during the chart week.

PRINCE 558/196
Call My Name (NPG/Columbia/SUM) ☆
Total Stations: 67
Heavy (0)
Medium (0), Light (67)
Airplay Adds: 19 KATZ, KDKS, KMEL, KPRS, WAJZ, WBTJ, WEUP, WFXA, WJBS, WJBT, WJHM, WJKS, WJLB, WJMJ, WMIB, WPWX, WQOK, WTLZ, WWPR

KEVIN LYTTLE FEAT. SPRAGGA BENZ 540/83
Turn Me On (VP/Atlantic)
Total Stations: 35
Heavy (3) WJHM, WMBX, WZMX
Medium (4), Light (28)
Airplay Adds: 5 KBTT, KDKS, KIPR, WMIB, WWPR

ALICIA KEYS FEAT. TONY! TONI! TONE! 515/203
Diary (J/RMG)
Total Stations: 40
Heavy (4) WGCI, WKYS, WPGC, WQUE
Medium (3), Light (33)
Airplay Adds: 6 WAMO, WIZF, WJMJ, WPRW, WPWX, WSSP

RIC-A-CHE 508/28
Coo Coo Chee (SRC/Universal/UMRG)
Total Stations: 33
Heavy (3) KDRB, WBHJ, WZFX
Medium (5), Light (25)
Airplay Adds: 1 KDKS

TWISTA FEATURING R. KELLY 441/76
So Sexy (Atlantic)
Total Stations: 26
Heavy (3) WGCI, WJLB, WQUE
Medium (5), Light (18)
Airplay Adds: 3 KRRQ, WJMJ, WSSP

BONE CRUSHER 438/186
Take Ya Clothes Off (Break 'Em Off/So So Def/Zomba)
Total Stations: 53
Heavy (2) KXHT, WHTA
Medium (1), Light (50)
Airplay Adds: 13 KBTT, KJMM, KMJJ, KPRS, KVSP, WBLX, WFXE, WJKS, WJUC, WJWZ, WTLZ, WWBZ, WWWV

MURPHY LEE FEATURING NELLY 409/20
Hold Up (Fo' Reel/Universal/UMRG) ☆
Total Stations: 38
Heavy (0)
Medium (3), Light (35)
Airplay Adds: 4 KATZ, KXHT, WAJZ, WPRW

YOUNG ROME FEATURING OMARION 403/136
After Party (T.U.G./Universal/UMRG)
Total Stations: 43
Heavy (2) WJMI, WRJH
Medium (1), Light (40)
Airplay Adds: 8 KBTT, KJMM, KMJJ, KPRS, WDTJ, WFXE, WJKS, WWWZ

T.I. 352/192
Let's Get Away (Grand Hustle/Atlantic)
Total Stations: 46
Heavy (0)
Medium (3), Light (43)
Airplay Adds: 12 KMJJ, KPRS, WBLX, WBTF, WHTA, WJLB, WJMI, WJUC, WKKV, WPRW, WQUE, WZFX

THE ROOTS 341/72
Don't Say Nuthin (Geffen/Interscope)
Total Stations: 59
Heavy (0)
Medium (3), Light (56)
Airplay Adds: 5 KIPR, KNOU, WDTJ, WFXE, WJUC

JOE BUDDEN FEAT. DJ KAYSLAY, FAT JOE & JOE 336/138
Not Your Average Joe (Def Jam/IDJMG)
Total Stations: 59
Heavy (0)

Medium (2), Light (57)
Airplay Adds: 7 KBTT, KBXX, KNOU, WJMI, WNPL, WQBT, WSSP

R. KELLY 315/83
U Saved Me (Jive/Zomba)
Total Stations: 23
Heavy (0)
Medium (4), Light (19)
Airplay Adds: 3 WFUN, WJMH, WJMJ

CRIME MOB 309/18
Knuck If You Buck (Crunk/BME)
Total Stations: 26
Heavy (2) KXHT, WHTA
Medium (4), Light (20)

JUVENILE, SKIP & WACKO 303/138
Nolla Clap (J Prince/Rap-A-Lot 4 Life)
Total Stations: 29
Heavy (1) KNOU
Medium (3), Light (25)
Airplay Adds: 10 KBXX, KDKS, KIPR, KJMM, KVSP, KXHT, WFXA, WJMI, WWBZ, WWWZ

TRILLVILLE 284/15
Get Some Crunk In Yo System (BME/Reprise/Warner Bros.)
Total Stations: 45
Heavy (1) KXHT
Medium (2), Light (42)
Airplay Adds: 3 KBXX, KIPR, WBTF

ANGIE STONE FEAT. SNOOP DOGG 275/79
I Wanna Thank Ya (J/RMG) ☆
Total Stations: 34
Heavy (0)
Medium (0), Light (34)
Airplay Adds: 9 KDKS, KIPR, WAJZ, WBLX, WBTF, WDKX, WJKS, WJLB, WPWX

TERROR SQUAD 251/91
Lean Back (SRC/Universal/UMRG)
Total Stations: 49
Heavy (0)
Medium (3), Light (46)
Airplay Adds: 1 WUSL

PLAY-N-SKILLZ 239/41
Freaks (PTP/Latium)
Total Stations: 11
Heavy (2) WEUP, WMBX
Medium (2), Light (7)
Airplay Adds: 1 WJHM

ALLEN ANTHONY 217/71
You (Roc-A-Fella/Def Jam/IDJMG)
Total Stations: 40
Heavy (0)
Medium (0), Light (40)
Airplay Adds: 6 KPRS, WJKS, WJLB, WJUC, WPHH, WZHT

Z-RO 202/52
I Hate U (J Prince/Rap-A-Lot 4 Life)
Total Stations: 15
Heavy (1) KBXX
Medium (2), Light (12)
Airplay Adds: 3 KBTT, KKDA, WRJH

AMANDA PEREZ 179/2
I Pray (Powerhowse/Virgin)
Total Stations: 8
Heavy (2) KVEG, WMBX
Medium (0), Light (6)

PAYBAK 173/51
My Angels (Rag Doll)
Total Stations: 17
Heavy (1) KNDA
Medium (0), Light (16)
Airplay Adds: 3 WHRK, WPWX, WQUE

GOODIE MOB 163/68
Play Your Flute (Goodie Mob/In The Paint/Koch)
Total Stations: 28
Heavy (0)
Medium (1), Light (27)
Airplay Adds: 8 WAMO, WBHJ, WEMX, WJBT, WJTT, WJWZ, WPEG, WPRW

KANYE WEST 163/27
The New Workout Plan (Roc-A-Fella/Def Jam/IDJMG)
Total Stations: 11
Heavy (2) WGCI, WPWX
Medium (1), Light (8)
Airplay Adds: 1 WDKX

LIL' FLIP FEATURING LEA 162/109
Sunshine (Sucka Free/Columbia/SUM)
Total Stations: 29
Heavy (0)
Medium (1), Light (28)
Airplay Adds: 5 KIPR, KNOU, WJUC, WWWV, WZHT

PETEY PABLO FEATURING RASHEEDA 153/49
Vibrate (Jive/Zomba)
Total Stations: 32
Heavy (0)
Medium (1), Light (31)
Airplay Adds: 1 KBFB

TEEDRA MOSES 151/51
Be Your Girl (TVT)
Total Stations: 32
Heavy (0)
Medium (1), Light (31)
Airplay Adds: 1 WBLX

TRUTH HURTS 150/55
Ready Now (Pookie)
Total Stations: 21
Heavy (0)
Medium (0), Light (21)
Airplay Adds: 1 WJTT

LUDACRIS 144/44
Diamond In The Back (Disturbing The Peace/Def Jam South/IDJMG)
Total Stations: 35
Heavy (0)
Medium (0), Light (35)
Airplay Adds: 4 KXHT, WQOK, WVEE, WWWZ

LOS SKILLZ 136/52
Make 'em (Greenhill Dynasty)
Total Stations: 26
Heavy (1) WWBZ
Medium (1), Light (24)
Airplay Adds: 3 KKFR, WHXT, WWBZ

J-KWON 132/11
Hood Hop (So So Def/Zomba)
Total Stations: 38
Heavy (0)
Medium (1), Light (37)

FRANCHISE 130/22
White Tees (Franchise/Tight 2 Def)
Total Stations: 7
Heavy (1) WHTA
Medium (1), Light (5)
Airplay Adds: 1 WHXT

NB RIDAZ 126/32
So Fly (NastyBoy/Upstairs)
Total Stations: 5
Heavy (1) KKFR
Medium (1), Light (3)

BEYONCE 123/61
Wishing On A Star (Columbia/SUM)
Total Stations: 12
Heavy (0)
Medium (2), Light (10)
Airplay Adds: 3 WBLK, WDKX, WJTT

CRIME FAMILY 123/20
Carolina's My Home (Crime Family)
Total Stations: 5
Heavy (1) WJMH
Medium (1), Light (3)
Airplay Adds: 1 WPEG

NEW EDITION 106/42
Hot 2Nite (Bad Boy/UMRG)
Total Stations: 24
Heavy (0)
Medium (1), Light (23)
Airplay Adds: 1 WTLZ

SLY BOOGY 98/1
That's My Name (J/RMG)
Total Stations: 23
Heavy (0)
Medium (0), Light (23)
Airplay Adds: 1 WBTF

LL COOL J 95/57
Headsprung (Def Jam/IDJMG)
Total Stations: 20
Heavy (0)
Medium (0), Light (20)
Airplay Adds: 3 KPWR, WEUP, WJTT

NAS 89/25
Thief's Theme (Ill Will/Columbia/SUM)
Total Stations: 35
Heavy (0)
Medium (0), Light (35)
Airplay Adds: 2 WERQ, WPHI

ADINA HOWARD 89/39
Nasty Grind (Maybach/Rufftown)
Total Stations: 11
Heavy (0)
Medium (1), Light (10)
Airplay Adds: 1 KDKS

BIG SHAUN 85/25
I Go To Work (Savage)
Total Stations: 44
Heavy (0)
Medium (0), Light (44)

LUTHER VANDROSS 84/4
Think About You (J/RMG)
Total Stations: 17
Heavy (0)
Medium (1), Light (16)

MR. MAGIC 82/42
*I Smo**, I Drank (Body Head)*
Total Stations: 7
Heavy (0)
Medium (1), Light (6)
Airplay Adds: 2 KNOU, WJMI

PITCH BLACK 77/27
Good Times (Travlo/UMRG)
Total Stations: 12
Heavy (0)
Medium (1), Light (11)
Airplay Adds: 2 KBTT, WAJZ

BEYONCE 76/2
Dangerously In Love (Columbia/SUM)
Total Stations: 5
Heavy (1) WPGC
Medium (0), Light (4)

E-VICIOUS 73/36
We Ain't Going No F...Where (eye4neye)
Total Stations: 10
Heavy (0)
Medium (0), Light (10)
Airplay Adds: 3 KBTT, KNDA, WQUE

IDEAL 72/7
Don't Do Me Like That (Neutral Ground)
Total Stations: 12
Heavy (0)
Medium (0), Light (12)
Airplay Adds: 1 KPRS

JODY BREEZE 72/19
Stay Fresh (Warner Bros.)
Total Stations: 11
Heavy (0)
Medium (0), Light (11)
Airplay Adds: 1 WJTT

THREE 6 MAFIA 70/7
Squeeze It (Hypnotize Minds/Columbia/SUM)
Total Stations: 4
Heavy (1) KXHT
Medium (0), Light (3)

JAY-Z 68/9
Lucifer (Roc-A-Fella/Def Jam/IDJMG)
Total Stations: 8
Heavy (1) WUSL
Medium (0), Light (7)

HOLLA POINT FEAT. THREE 6 MAFIA 65/19
Baby Mama (Hypnotize Minds/Columbia/SUM)
Total Stations: 19
Heavy (0)
Medium (1), Light (18)
Airplay Adds: 1 WEUP

E-A-SKI 65/2
Ride (Infared)
Total Stations: 2
Heavy (1) KMEL
Medium (0), Light (1)

JA RULE FEAT. R. KELLY 63/63
I Wonder (The Inc./Def Jam/IDJMG)
Total Stations: 20
Heavy (0)
Medium (0), Light (20)
Airplay Adds: 4 KNOU, WBOT, WPHH, WQHT

PAUL WALL 60/21
They Don't Know (Paid In Full)
Total Stations: 2
Heavy (1) KBXX
Medium (0), Light (1)

TOEZ 54/18
Mess With Dem (Too Loaded)
Total Stations: 5
Heavy (0)
Medium (1), Light (4)
Airplay Adds: 1 WEMX

TREN'L 53/11
Outlaw (Casablanca/Universal/UMRG)
Total Stations: 10
Heavy (0)
Medium (0), Light (10)
Airplay Adds: 3 KIPR, WBLX, WJTT

LIL-C 51/12
Thug Luv (Dollyhood)
Total Stations: 6
Heavy (0)
Medium (0), Light (6)

ABYSS 51/13
Pushemoff (Rag Doll)
Total Stations: 4
Heavy (0)
Medium (1), Light (3)

H-Heavy (45+ Detections), M=Medium (25-44), L=Light (Under 25). Airpower awarded to songs appearing in the top 20 on both the Airplay and Audience charts for the first time with increases in both detections and audience. ☆ Initial impact: songs appearing on this page for the first time in summary form. Airplay Adds are songs with 6 or more detections at new stations this week. The Airplay Leaderboard ranks taste-maker stations that have been the most successful in identifying future hit songs as measured by the amount of AIRPOWER titles for which they were Airplay Leaders. Refer to each format's Power Playlists page to see this week's Airplay Leaders. ☆ indicates title earned HitPredictor status in research data provided by Promosquad.

THIS WEEK	LAST WEEK	WKS. ON CHART	TITLE/IMPRINT/PROMOTION LABEL	ARTIST	DETECTIONS		AUDIENCE	
					TW	LW	MILLIONS	RANK
			★★★★ NO. 1 ★★★★★					
1	1	14	IF I AIN'T GOT YOU J/RMG (7 weeks at No. 1)	ALICIA KEYS	1432	1436	16.126	1
2	2	16	STILL IN LOVE CASH MONEY CLASSICS/UMRG	TEENA MARIE	1249	1312	14.680	2
3	3	29	THINK ABOUT YOU J/RMG	LUTHER VANDROSS	1181	1155	13.951	3
4	5	11	NEW DAY DEF SOUL CLASSICS/IDJMG	PATTI LABELLE	903	906	9.633	5
5	4	13	I WANT YOU VIRGIN	JANET JACKSON	844	951	8.772	7
			★ GREATEST GAINER ★					
6	12	7	BURN LAFACE/ZOMBA	USHER	794	636	8.925	6
7	9	11	HAPPY PEOPLE JIVE/ZOMBA	R. KELLY	768	681	10.199	4
8	6	20	ME, MYSELF AND I COLUMBIA/SUM	BEYONCE	736	786	8.349	9
9	7	25	SORRY 2004 J/RMG	RUBEN STUDDARD	683	792	8.640	8
10	10	71	LOVE CALLS KEMISTRY/MOTOWN/UMRG	KEM	680	701	6.810	10
11	8	17	WHOKNOWS DEF SOUL/IDJMG	MUSIQ	630	718	5.472	15
12	11	9	MUSICOLOGY NPG/COLUMBIA/SUM	PRINCE	607	649	6.578	13
13	13	10	QUESTIONS ELEKTRA/ATLANTIC	TAMIA	510	528	3.564	18
14	16	12	DON'T TAKE YOUR LOVE AWAY MAGIC JOHNSON/GEFFEN/INTERSCOPE	AVANT	463	422	6.634	12
15	14	65	STEP IN THE NAME OF LOVE JIVE/ZOMBA	R. KELLY	454	503	6.767	11
			★★ AIRPOWER ★★					
16	22	5	I DON'T WANNA KNOW BAD BOY/UMRG MARIO WILSON FEATURING ENYA & P DIDDY		427	351	5.644	14
			★★ AIRPOWER ★★					
17	23	8	MAKE IT ALRIGHT BAD BOY/UMRG	CARL THOMAS	423	326	4.937	16
18	21	15	HOLD ON VIRGIN	DWELE	413	352	3.455	19
19	19	8	WHAT IF J/RMG	RUBEN STUDDARD	404	387	2.942	21
20	17	37	READ YOUR MIND MAGIC JOHNSON/GEFFEN/INTERSCOPE	AVANT	385	420	3.571	17
21	25	5	FREE EPIC/SUM	LASHELL GRIFFIN	302	263	2.117	22
22	30	3	CALL MY NAME NPG/COLUMBIA/SUM	PRINCE	270	151	2.964	20
23	24	20	THE LONELINESS ARISTA/RMG	BABYFACE	258	303	1.661	25
24	26	16	CHARLENE SO SO DEF/ZOMBA	ANTHONY HAMILTON	209	229	1.305	29
25	28	5	IT'S A WRAP GEFFEN/INTERSCOPE	MARY J. BLIGE	202	168	1.559	26
26	27	8	U SHOULD'VE KNOWN BETTER J/RMG	MONICA	199	188	1.259	30
27	37	3	I WANNA THANK YA J/RMG	ANGIE STONE	161	94	1.405	27
28	33	5	DID YOU CRY ENCHANTED/LIQUID 8	JESSE POWELL	138	130	0.476	-
29	29	15	OOH BOY 33RD STREET/BAYSIDE	EN VOGUE	138	165	0.909	34
30	31	18	PIECES SHANACHIE	HIL ST SOUL	127	141	1.149	31
			★ MOST AIRPLAY ADDS ★					
31	NEW		PRICELESS JIVE/ZOMBA	JOE	120	7	1.142	32
32	35	4	RAININ' IN MY HEART BLUE NOTE/EMC	AL GREEN	110	130	0.522	-
33	39	5	YEAH! LAFACE/ZOMBA USHER FEATURING LIL JON & LUDACRIS		90	77	1.737	23
34	NEW		SOMETHIN' SPECIAL MOTOWN/UMRG	THE TEMPTATIONS	90	13	0.630	39
35	36	14	LOSING MY MIND MOTOWN/UMRG	TRINA BROUSSARD	90	102	0.492	-
36	38	2	FOR REAL BLISSLIFE	AMEL LARRIEUX	88	88	0.666	38
37	NEW		WORDS HURT TOO DKG/TOP SAIL	RHIAN BENSON	79	71	0.623	40
38	NEW		FEELIN GOOD PYRAMID GLADYS KNIGHT FEATURING EDESSIA ALEJANDRO		72	48	0.507	-
39	NEW		SO IN LOVE END ZONE	WILLIE CLAYTON	59	48	0.798	36
40	NEW		U SAVED ME JIVE/ZOMBA	R. KELLY	58	50	1.314	28

Songs ranked by number of detections. Songs showing an increase in detections over the previous week, regardless of chart movement. A song will also receive a bullet if its percentage loss in detections does not exceed the percentage of monitored station downtime for the format. A song that has been on the chart for more than 20 weeks will generally not receive a bullet, even if it registers an increase in detections. Airpower awarded to songs appearing in the top 20 on both the Airplay and Audience charts for the first time with increases in both detections and audience. Greatest Gainer awarded to the song with the largest increase in detections. Most Airplay Adds awarded to the song registering six or more detections at the most stations for the first time this week. A song with a gain in detections over the previous week is placed first if tied with a song with a decline over the same period. When tied songs are each gaining detections or each losing detections, the song being played on more stations is placed first. Songs below the top 20 become recurrenents and are removed from the chart after 26 weeks.

most airplay adds ADULT R&B

NEW STATIONS

- JOE Priceless (Jive/Zomba)** 10
KOKY, KRWP, WAGH, WDAS, WHOT, WHUR, WKXI, WMMJ, WVAZ, WZAK
Total Stations With Six Or More Detections: 10
TOTAL DETECTIONS BY DAYPART: 6-10 3%, 10-3 17%, 3-7 13%, 7-12 31%, 12-6A 38%
- ANGIE STONE I Wanna Thank Ya (J/RMG)** 9
KJLH, WBAV, WCFB, WDAS, WDLT, WKJS, WKXI, WOQK, WWDM
Total Stations With Six Or More Detections: 14
TOTAL DETECTIONS BY DAYPART: 6-10 3%, 10-3 30%, 3-7 20%, 7-12 11%, 12-6A 36%
- PRINCE Call My Name (NPG/Columbia/SUM)** 5
WBAV, WDLT, WHOT, WKJS, WLVH
Total Stations With Six Or More Detections: 15
TOTAL DETECTIONS BY DAYPART: 6-10 2%, 10-3 21%, 3-7 20%, 7-12 26%, 12-6A 30%
- THE TEMPTATIONS Somethin' Special (Motown/UMRG)** 4
KOKY, WGPR, WKXI, WVBE
Total Stations With Six Or More Detections: 5
TOTAL DETECTIONS BY DAYPART: 6-10 7%, 10-3 17%, 3-7 20%, 7-12 20%, 12-6A 37%
- USHER Burn (LaFace/Zomba)** 3
WMMJ, WSOL, WWIN
Total Stations With Six Or More Detections: 31
TOTAL DETECTIONS BY DAYPART: 6-10 17%, 10-3 20%, 3-7 16%, 7-12 22%, 12-6A 25%

GREATEST GAINERS ADULT R&B

- USHER • Burn (LaFace/Zomba)** INCREASE IN DETECTIONS +158
WSOL +18, KMJM +14, WKUS +14, WYLD +12, WMMJ +11, WFLM +10, WDAS +10, WVAZ +10, WDLT +9, WOQK +8
- PRINCE • Call My Name (NPG/Columbia/SUM)** +119
WKUS +27, KMJX +14, WYLD +12, KJLH +11, WLVH +10, WMXD +8, WDLT +7, WRNB +5, WGPR +5, WDAS +4
- JOE • Priceless (Jive/Zomba)** +113
KOKY +25, WHOT +13, WDAS +8, WHUR +8, WKXI +7, WVAZ +7, KRWP +6, WAGH +6, WMMJ +6, WZAK +6
- CARL THOMAS • Make It Alright (Bad Boy/UMRG)** +97
KOKY +12, WFLM +9, WRKS +6, WPHR +5, WKXI +5, KMJX +4, WOQK +4, WSOL +4, WIMX +3, WVBE +3
- R. KELLY • Happy People (Jive/Zomba)** +87
WVAZ +26, WDDZ +10, WFLM +9, WMXD +8, WMGL +7, WVBE +6, WWDM +6, KOKY +5, WPHR +5, WJXN +4

Monitor RECURRENTS ADULT R&B

RANK	TITLE	ARTIST	IMPRINT/PROMOTION LABEL	DETECTIONS	
				TW	LW
1	YOU DON'T KNOW MY NAME	ALICIA KEYS	J/RMG	377	412
2	THE WAY YOU MOVE	OUTKAST FEAT. SLEEPY BROWN	(LAFACE/ZOMBA)	363	398
3	I NEED YOU NOW	SMOKIE NORFUL	(EMI GOSPEL)	355	439
4	MORE & MORE	JOE	(JIVE/ZOMBA)	317	363
5	I WISH I WASN'T	HEATHER HEADLEY	(RCA/RMG)	270	236
6	U GOT THAT LOVE (CALL IT A NIGHT)	GERALD LEVERT	(ELEKTRA/ATLANTIC)	265	254
7	DANCE WITH MY FATHER	LUTHER VANDROSS	(J/RMG)	249	253
8	A MILLION WAYS	WILL DOWNING	(GRP/VERVE)	247	315
9	FAR AWAY	KINDRED THE FAMILY SOUL	(HIDDEN BEACH/EPIC/SUM)	233	290

Recurrenents are titles that have appeared on the Adult R&B Airplay chart for 26 weeks and have dropped below the top 20.



joe Priceless

- ▶ Most Monitor Adult R&B adds
- ▶ Highest New Entry at (31)
- ▶ Certified Gold



ADULT R&B

FOR WEEK ENDING MAY 23, 2004

ADULT R&B



Nielsen Broadcast Data Systems

IMPACT!

Single playing gains in detections or with a percentage loss in detections equal to or better than the monitored downtime percentage in the format. Songs listed in order of detections.

WRKS New York
DM: John Mullen
PD: Toya Beasley
MD: Julie Gustines
Emmis 212-242-9870

KHHT Los Angeles
PD: Mike Manno
APD: Ron Shapiro
Clear Channel 818-559-2252

WVAZ Chicago
OM: Elroy Smith
APD/MD: Armando Rivera
Clear Channel 312-360-9000

WDAS Philadelphia
VP/GM/PD: Joe Tamburro
Dir/Pgm: Thea Mitchem
APD/MD: Jo Ann Gamble
Clear Channel 610-617-8500

WHUR Washington, DC
PD/MD: David A. Dickinson
Howard Univ. 202-806-3500

WMMJ Washington, DC
PD: Kathy Brown
MD: Mike Chase
Radio One 301-306-1111

KMIQ Houston
OM: Tom Calococco
PD: Sam Choice
Radio One 713-623-2108

WHQT Miami
PD: Derrick Brown
APD/MD: Karen Vaughn
Cox 954-584-7117

WMXD Detroit
PD: Jamillah Muhammad
Clear Channel 313-965-2000

KJLH Los Angeles
PD/MD: Audrae Russell
TAXI 310-330-2200

KBLX San Francisco
PD: Kevin Brown
Inner City 415-284-1029

WZAK Cleveland
DM: Kim Johnson
MD: Bobby Rush
Radio One 216-579-1111

WFXC Raleigh
DM: Cy Yungi
APD/MD: Jodi Berry
Radio One 919-848-9736

WYLD New Orleans
OM: Carla Boatner
PD/MD: AJ Appleberry
Clear Channel 504-827-6000

WQMG Greensboro
PD: Alvin Stowe
Entercom 336-605-5200

KRWP Houston
PD/MD: Maurice Devoe
Cumulus 713-300-3500

WWIN Baltimore
PD: Tim Watts
MD: Keith Fisher
Radio One 410-332-8200

WBAV Charlotte
PD: Terry Avery
Infinity 704-333-0131

TOP 10 BOUND

AIRPOWER BOUND

Table with columns: Station, Song, Total Detections/Gain, Chart Move, Airplay Adds. Includes entries for AVANT, DWELE, and others.

Table with columns: Station, Song, Total Detections/Gain, Chart Move, Airplay Adds. Includes entries for RUBEN STUDDARD, LASHLEI GRIFFIN, and others.

Table with columns: Station, Song, Total Detections/Gain, Chart Move, Airplay Adds. Includes entries for MARY J. BLIGE, MONICA, and others.

Table with columns: Station, Song, Total Detections/Gain, Chart Move, Airplay Adds. Includes entries for ANGIE STONE, JESSE POWELL, and others.

AIRPOWER

Table with columns: Station, Song, Total Detections/Gain, Chart Move, Airplay Adds. Includes entries for JOE, MARIO WINANS FEAT. ENYA & P. DIDDY, and others.

AIRPLAY LEADER (FIRST STATION TO 100 PLAYS)
WHQT • Miami, FL
PD: Derrick Brown
MD: Karen Vaughn
Date: 05/02/04

AIRPLAY LEADER (FIRST STATION TO 100 PLAYS)
AMEL LARRIEUX
For Real (Blisslife)
Total Stations: 13
Chart Move: 38-36

AIRPLAY LEADER (FIRST STATION TO 100 PLAYS)
WJXN • Jackson, MS
PD: Steve Posten
Date: 04/25/04

AIRPLAY LEADER (FIRST STATION TO 100 PLAYS)
WILLIE CLAYTON
So In Love (End Zone)
Total Stations: 5
Chart Move: Debut 39

AIRPLAY LEADER (FIRST STATION TO 100 PLAYS)
WBAV Charlotte
PD: Terry Avery
Infinity 704-333-0131

AIRPLAY LEADER (FIRST STATION TO 100 PLAYS)
THEO
Chemistry...You And Me (Compendia)
Total Stations: 6
Chart Move: Debut 39

Table with columns: Station, Song, Total Detections/Gain, Chart Move, Airplay Adds. Includes entries for THEO, MARIO WINANS FEAT. ENYA & P. DIDDY, and others.

Table with columns: Station, Song, Total Detections/Gain, Chart Move, Airplay Adds. Includes entries for THEO, MARIO WINANS FEAT. ENYA & P. DIDDY, and others.

H=Heavy (24+ Detections), M=Medium (12-23), L=Light (Under 12). Airpower awarded to songs appearing in the top 20 on both the Airplay and Audience charts for the first time with increases in both detections and audience. Initial impact: songs appearing on this page for the first time in summary form. Airplay Adds are songs with 6 or more detections at new stations this week.



Country Station WXTU Turns 20

Continued from page 1

clubs involved, too. I think we were just ahead of the changeover to the new acts at the time like Randy Travis and Garth [Brooks]. So our oldies represented some of the music that people used as examples when they complained about the format."

When current Bullseye Marketing Research president/CEO John Hart joined the station as PD in 1991, he took the proverbial country bull by the horns.

"The bigger the market the more country you have to be, because everything else is filled," he says. "If they want AC, they've got five AC stations. If they want something else, they've got four of those stations. So if they hit 92.5 [the station's frequency], it should be country and there should be no doubt about it. That's the biggest change we made when we went in. We became a full-blown country radio station."

"The challenge was getting out of the mentality that you can't play country music in Philadelphia, and I mean traditional country music," Hart continues. "When I went there, they wouldn't play Clint Black or Alan Jackson, because they were 'too country.'"

Current PD Bob McKay, who joined the station from Beasley Broadcast Group sister station WKIS Miami in 2000, says that bias has not changed. "The biggest thing we've had to overcome is 'country & Western,' he says, referring to a long-outdated term for the format that many Northeasterners still use. "It's still prevalent, it hasn't changed. They still call it that," he says.

COMPETITION EVERYWHERE

Although none of the staffers could recall a direct format rival, they all agree that the station has not been without competition.

Former WXTU promotions director Keith Gale, who is now national director of promotion at RCA Records, says "the competition in Philadelphia was the major challenge . . . You had so many signals serving the market, and they were all top-notch competitors. In morning drive alone we were up against Howard Stern, legendary talent John Lander, as well as heritage air talent that had been in the market and

of New Jersey," Brophey says of the early days. "Beasley worked some incredible miracles to get the transmitter to the antenna farm [where many of Philadelphia's sticks are concentrated], which gave the format a city grade metro signal later on."

THE HIGH COST OF MARKETING

PDs working at WXTU quickly find out that a TV or billboard campaign in Philadelphia can be cost-prohibitive.

"The cost of purchasing media is astronomical in that market," according to former PD Ken

Johnson, who is currently a programmer at XM Satellite Radio. "To do any kind of a billboard showing or a TV campaign, you're looking at \$1 million out of the chute to do anything that's really going to get you any notice."

Hart's answer to the high cost of media was direct marketing. "I think we ended up with about 90,000 people in our database," he says. "We went with direct mail and databasing, and it worked for us. We went from 13th to fifth in two books."

Hart also focused on a morning show that fit the market. "I hired one of John Lander's people," he says. "John Lodge was [Lander's] morning show producer and sidekick who really knew the phone business—how to create phone calls and make phone calls. That's what Lander was all about. We put him on the air with [incumbent] Gina Preston, and that seemed to work for us. We had a top five morning show."

When longtime host Preston moved to the sales department in the late '90s, Johnson reunited high-profile morning duo Steve Harmon and Scott Evans, who had last worked together at KPLX Dallas. When Harmon left a few years later, morning team member Andie Sommers became Evans' partner.

The country boom of the early and mid-'90s also spurred the station to higher ratings, according to Brophey. "As the format enjoyed some excitement in the early '90s, so did the station,"

he says. "We became more involved with the Nashville community [and] had a lot of national press going on about the format. In Philly, the format was becoming legit and had a pretty decent following. The station had some good ratings runs. Way up into the top 10."

Hart agrees that the format boom that occurred during his watch bolstered the station's fortunes. "I'd love to say that I was this genius programmer, but that wasn't the case at all," he says. "We just happened to be in the right place at the right time."

KEEPING IT CONTEMPORARY

Despite the station's gains through the years, combatting the country & Western perception is a constant task, according to McKay. "It's an ongoing thing," he says. "There's nothing specific you can do other than to put a radio station on 24 hours a day that is reflective of the city, which is very contemporary."



Rodney Crowell, left, poses with former WXTU staffers morning host Gina Preston, right, and promotions director Javier Suarez following his performance at the station's first anniversary show in 1989, which celebrated WXTU's fifth anniversary.

LOGOS THROUGH THE YEARS



WXTU: 15 Years Onstage

As WXTU Philadelphia celebrates 20 years as a country station, the outlet is also feting the 15th year of its annual listener appreciation show—or anniversary show, as it is more widely known.

The show launched in 1989 and has featured a bevy of country stars over the years. The 2004 lineup includes Reba McEntire, Joe Nichols, Sheldaisy, Gretchen Wilson, Blue County, Big & Rich and Brad Cotter on June 5.

Most of the current and former WXTU programmers *Airplay Monitor* talked to cite the show as a highlight of their tenure there.

WKLB Boston PD Mike Brophey previously served as APD/MD for WXTU and was there for the early shows. "We had the Judds at Valley Forge Music Fair . . . which held about 3,000 people," he recalls. From those humble beginnings, he says, "it's amazing to me now that we [later] pulled off appreciation shows with 20,000 [in attendance] as a matter of course."

Former PD John Hart, now president/CEO of Bullseye Marketing Research, also recalls the show's dramatic growth. "We went from these little shows . . . to putting 25,000 to 30,000 people on Delaware Avenue down by the river."

Former WXTU promotions director and current RCA Records national director of promotion Keith Gale recalls the team spirit the shows engendered.

"The first year we went to the major festival/multistage format; we hired an event production company to produce it," Gale says. "After one year of having this outside company do the job for us, we felt we could do it better ourselves, and I think we did. We produced this major city outdoor festival completely in-house. From the booking of the acts, to the design and printing of the tickets, to the renting of the stages, hiring of the security, negotiating concession con-

tracts. Everything.

"Everyone at the station took great pride in this event and put in way too many weeks and days and hours, but that is what made it so special," Gale continues. He calls it "a major team effort. Of course, that is what made the after-party so satisfying, too."

The day after heading up the station's 10th anniversary show, Gale went to work for RCA.

Former PD Ken Johnson, now a programmer with XM Satellite Radio, says he tried to expand the show beyond a typical country audience.

"The first year [I was] there, we brought in Reba McEntire, and the second year we had Randy Travis," he says. "Before I left, I booked Alabama. We tried to put some names at the top of the bill that would get some notice outside the country lifegroup."

Hart remembers the show as his first exposure to a then little-known artist.

"We were the first radio station that Tim McGraw ever played a concert for," he claims. "He didn't even have a record deal. The only reason we brought him in was that his dad was [former Philadelphia Phillies star] Tug McGraw. We could talk about Tug's kid coming to play on our show. I didn't know Tim McGraw from squat. He played . . . on our show, and the rest is history."

Current PD Bob McKay is proud of the fact that the concert is free for listeners and yet the station is able to pay top-notch artists.

"What we do is sell 'ticket runs,'" he says, explaining how the station's sales department sells van stops with ticket giveaways to clients. "We'll sell maybe two [ticket runs] a day and, as we get closer to [the show], two and three a day. They're 92 minutes each. We make a lot of money on these ticket runs, and that pays for the acts."

KEN TUCKER

Memorable Moments In WXTU History

- "Oct. 4, 2001 . . . our first-ever Philly Chili Cook-Off. It was three weeks after Sept. 11, and the nation was still stunned. Brooks & Dunn, Martina McBride, Montgomery Gentry, Keith Urban and Phil Vassar came onstage after Brooks & Dunn's encore to sing 'God Bless America' and 'Amazing Grace.' We also had in attendance three firefighters from New York City and five from Philadelphia, along with the Philadelphia Police and Fire Pipe and Drum Corps. The audience all sang. It was a moment burned into my mind that will never be duplicated. I have never in all of my years in the business been so moved, literally to tears."—current WXTU PD Bob McKay

- "One of the old locations of the studio had a unisex bathroom, but it was set up with no lock. You had to say 'Male' or 'Female' to enter."—former WXTU promotions director Keith Gale (now with RCA Records)

- "When office manager Marianne Russo died. She had been there forever, everyone

loved her and cancer got her. They even named a studio after her [in the station's newest facility]."—former WXTU APD/MD Mike Brophey (now at WKLB Boston)

- "Promotion director Javier Suarez came to me and asked if I wanted to be a part of a two-week campaign with McDonald's. They were introducing a new product, the McChicken sandwich. They needed someone to wear the station mascot suit, which was called 'the Critter.' It was a big, red chicken. I swore I would never wear it. Even though I was an unpaid intern still in college, I had my pride. That pride went out the window when they told me it would pay me \$100 per day and all the McDonald's food I could carry home. That was my first paying job at WXTU."—Keith Gale

- "We had our second Chili Cook-Off in 2002, and Tim McGraw was the headliner. [His father] Tug [McGraw also] came up onstage with his youngest son, Chris, and sang. It was fabulous."—Bob McKay

McKay believes the station's image matches the market. "It's not a real lazy and yawning country & Western station, but a pretty slick, pretty-good-sounding country station in a big city. That's what our goal has always been. Just make it accessible to everybody imagewise."

To that end, McKay has continued to position WXTU as a mainstream station. "We put on the Donovan McNabb show in 2000, which was a pretty big deal," he says. The call-in show, which is co-hosted by Evans, Sommers and Philadelphia Eagles quarterback McNabb, airs weekly

during the football season. It is one of only a handful of such shows to air on country stations nationwide. "To have him on a country station on Monday night at 7 p.m. was unheard-of," McKay says.

Research and football aside, McKay says Philadelphia is a great place for a country station, if it is presented right.

"Philadelphia has . . . a great lineage in music, and it's a very contemporary city," he says. "There's a great heritage in this area for music. You've just got to keep it contemporary-sounding."

COUNTRY

Nielsen Broadcast Data Systems

Compiled from a national sample of data supplied by Nielsen Broadcast Data Systems to Airplay Monitor. 122 country stations are electronically monitored 24 hours a day, 7 days a week. © 2004 VNU Business Media, Inc. All rights reserved.

★ indicates title earned HitPredictor status in research data provided by Promosquad.

Main table with columns: THIS WEEK, LAST WEEK, WKS. ON CHART, TITLE/IMPRINT/PROMOTION LABEL, ARTIST, DETECTIONS TW, LW, AUDIENCE MILLIONS, RANK. Includes top 54 songs and airpower indicators.

most airplay adds

NEW STATIONS section with columns: TITLE, ARTIST, DETECTIONS, AUDIENCE. Lists songs like 'Live Like You Were Dying' and 'Hey Good Lookin''. Includes station lists and total detections by daypart.

GREATEST GAINERS COUNTRY

Greatest Gainers section with columns: TITLE, ARTIST, INCREASE IN DETECTIONS. Lists songs like 'Live Like You Were Dying' (+765) and 'Hey Good Lookin' (+670) with station lists.

HitPredictor COUNTRY PROVIDED BY promosquad

HitPredictor section showing 'NEW RELEASES WITH TOP 10 CALLOUT POTENTIAL' (e.g., 'COUNTRY' by Jimmy Buffett) and 'RECENTLY TESTED SONGS WITH TOP 10 CALLOUT POTENTIAL' (e.g., 'How Far' by Martina McBride).

Continuation of the main table with columns: THIS WEEK, LAST WEEK, WKS. ON CHART, TITLE/IMPRINT/PROMOTION LABEL, ARTIST, DETECTIONS TW, LW, AUDIENCE MILLIONS, RANK. Includes songs like 'The Boogie Man' and 'That's Cool'.

Songs ranked by number of detections. Songs showing an increase in detections over the previous week, regardless of chart movement. A song will also receive a bullet if its percentage loss in detections does not exceed the percentage of monitored station downtime for the format. Airpower awarded to songs appearing in the top 20 on both the Airplay and Audience charts for the first time with increases in both detections and audience. Greatest Gainer awarded to the song with the largest increase in detections. Most Airplay Adds awarded to the song registering six or more detections at the most stations for the first time this week. A song with a gain in detections over the previous week is placed first if tied with a song with a decline over the same period. When tied songs are each gaining detections or each losing detections, the song being played on more stations is placed first. Songs below the top 15 become recurrents and are removed from the chart after 20 weeks.

Advertisement for 'PASSENGER SEAT' by SheDAISY. Features photos of the artists and statistics for Kansas City #3, Minneapolis #4, and Philadelphia #6. Includes text: 'When played in drive times, "PASSENGER SEAT" Rules!' and 'Research based on Callout America 75 Person/3 Market Independent Study May 12-21, 2004'. Logo for Lyric Street Records.

Songs ranked by number of detections. Playlists are listed in order of TSA weekly cumes, beginning with the highest-cuming station. Cumes are updated twice yearly following the release of the spring and fall Arbitron surveys. The number of stations shown each week varies depending upon space.

KZLA Los Angeles
OM: R.J. Curtis
APD/MD: Tony Campos
Emmis 323-882-8000
93.9 KZLA
TW LW
1 Gretchen Wilson Redneck Woman 45 45

KPLX Dallas
PD: Paul Williams
APD: Smokey Rivers
MD: Cody Alan
99.5 the wolf
Susquehanna 214-526-2400
TW LW
1 John Michael Montgomery Letters From Ho 53 29

WUSN Chicago
APD/MD: Evan Kroft
Infinity 312-649-0099
US 90.5 WUSN
1 Rascal Flatts Mayberry 48 40

WKHX Atlanta
OM: Mark Richards
MD: Johnny Gray
ABC/Disney 770-955-0101
Kicks 103.5 WKHX
1 Toby Keith Whiskey Girl 43 34

KSCS Dallas
APD/MD: Chris Huff
ABC/Disney 817-695-0800
93.5 KSCS
1 Lonestar Let's Be Us Again 37 34

WXTU Philadelphia
PD: Bob McKay
APD/MD: Cadillac Jack
Beasley 610-667-9000
92.5 WXTU
1 Toby Keith Whiskey Girl 43 35

KMP5 Seattle
OM/PD: Becky Brenner
MD: Tony Thomas
Infinity 206-805-0941
94.1 KMP5
1 Gretchen Wilson Redneck Woman 47 49

WYCD Detroit
PD: Mac Daniels
APD/MD: Ron Chatman
Infinity 248-799-0600
99.5 WYCD
1 Toby Keith Whiskey Girl 50 42

KNIX Phoenix
PD: Shaun Holly
MD: Gwen Foster
Clear Channel 480-966-6236
98.5 KNIX
1 Rascal Flatts Mayberry 51 47

KYGO Denver
PD: Joel Burke
MD: Garret Doll
Jefferson Pilot 303-321-0950
98.5 KYGO
1 Rascal Flatts Mayberry 45 44

WPOC Baltimore
APD/MD: Michael J.
Clear Channel 410-366-3693
93.5 WPOC
1 Gretchen Wilson Redneck Woman 48 34

KILT Houston
OM/PD: Jeff Garrison
Interim MD: Steve Rixx
Infinity 713-881-5100
100.3 KILT
1 George Strait Desperately 49 54

KEYE Minneapolis
VP/Pgm: Gregg Swedberg
APD/MD: Travis Moon
Clear Channel 952-417-3000
93.5 KEYE
1 Gretchen Wilson Redneck Woman 45 44

WIL St. Louis
PD: Greg Mazingo
APD/MD: Dan Montana
Bonneville 314-983-6000
93.5 WIL
1 Gretchen Wilson Redneck Woman 79 64

WIVK Knoxville
OM: Mike Hammond
MD: Colleen Addair
Citadel 865-588-6511
93.5 WIVK
1 John Michael Montgomery Letters From Ho 45 38

WQYK Tampa
OM: Mike Culotta
APD: Beecher Martin
MD: Jay Roberts
Infinity 813-287-0995
93.5 WQYK
1 Gretchen Wilson Redneck Woman 45 43

WKLB Boston
PD: Mike Brophy
APD/MD: Ginny Rogers
Greater Media 617-822-9600
99.5 WKLB
1 John Michael Montgomery Letters From Ho 39 39

WFMS Indianapolis
OM: David Wood
PD: Bob Richards
MD: J.D. Cannon
Susquehanna 317-842-9550
93.5 WFMS
1 John Michael Montgomery Letters From Ho 42 40

WWKA Orlando
PD: Len Shackelford
MD: Shadow Stevens
Cox 407-298-9292
99.2 WWKA
1 Kenny Chesney There Goes My Life 61 61

KFRG Riverside
OM: Lee Douglas
MD: Don Jeffrey
Infinity 909-825-9525
99.5 KFRG
1 Keith Urban You'll Think Of Me 49 49

WGAR Cleveland
PD: Meg Stevens
MD: Chuck Collier
Clear Channel 216-520-2600
99.5 WGAR
1 Gretchen Wilson Redneck Woman 47 42

WSOC Charlotte
OM: DJ Stout
PD: Jeff Roper
APD/MD: Rick McCracken
Infinity 704-522-1103
93.5 WSOC
1 Joe Diffie Tougher Than Nails 40 34

WDSY Pittsburgh
VP/Pgm: Keith Clark
APD/MD: Stoney Richards
Infinity 412-920-9400
103.5 WDSY
1 Montgomery Gentry If You Ever Stop Low 47 29

WKIS Miami
PD: Bob Barnett
MD: Darlene Evans
Beasley 305-654-1700
93.5 WKIS
1 Gretchen Wilson Redneck Woman 41 41

COUNTRY WHEELS AIRPLAY Monitor Nielsen Broadcast Data Systems

Songs ranked by number of detections. Playlists are listed in order of TSA weekly cume, beginning with the highest-cuming station. Cumes are updated twice yearly following the release of the spring and fall Arbitron surveys. The number of stations shown each week varies depending upon space.

KMFL Phoenix PD: Pgm: Todd Wallace Dir: Jay McCarthy APD/MD: Dave Collins Infinity 602-258-8181

WQDR Raleigh PD: Lisa McKay APD/MD: Mike Biddle Curtis Media 919-876-6464

WBCT Grand Rapids OM: Doug Montgomery MD: Dave Taff Clear Channel 616-459-1919

WAMZ Louisville VP/Pgm: Kelly Carls PD/MD: Coyote Calhoun Clear Channel 502-582-7840

WMIL Milwaukee OM/PO: Kerry Wolfe MD: Mitch Morgan Clear Channel 414-545-8900

WWYZ Hartford PD: Justin Case MD: Jay Thomas Clear Channel 860-723-6000

WUBE Cincinnati OM: Tim Closson APD: Kathy O'Connor MD: Duke Hamilton Infinity 513-699-5105

WSSL Greenville OM/PO: Scott Johnson APD/MD: Kix Layton Clear Channel 864-242-1005

WESC Greenville OM/PO: Scott Johnson MD: John Landrum Clear Channel 864-242-4660

WOGI Pittsburgh VP/Pgm: Frank Bell PD: Mark Lindon Keymarket 412-279-5400

WGNA Albany, NY PD: Buzz Brindle MD: Bill Earley Regent 518-782-1474

KUPL Portland, OR PD: Cary Rolfe MD: Rick Taylor Infinity 503-223-0300

KZBR San Francisco PD/MD: Ray Massie Bonneville 415-957-0957

KAJA San Antonio PD: Clayton Allen Clear Channel 210-736-9700

WKDF Nashville OM: Dave Kelly MD: Kim Leslie Citadel 615-244-9533

WSIX Nashville Dir: Pgm: Jack Hunnicutt PD: Keith Kaufman Clear Channel 615-664-2400

KSON San Diego OM: John Dimick APD/MD: Greg Frey Jefferson Pilot 619-291-9797

WQMX Akron OM: Kevin Mason APD: Ken Steel Rubber City 330-869-9800

WCTK Providence PD: Rick Everett MD: Sam Stevens Hall 401-467-4366

KASE Austin VP/Pgm: Jason Kane APD: Bob Pickett Clear Channel 512-495-1300

WYGY Cincinnati Dir: Pgm: T.J. Holland APD: Dawn Michaels Susquehanna 513-241-9898

WYRK Buffalo PD: John Paul APD/MD: Wendy Lynn Infinity 716-852-7444

KBEQ Kansas City PD: Mike Kennedy MD: T.J. McEntire Infinity 816-531-2535

KNCI Sacramento OM: Mark Evans APD: Greg Cole MD: Jennifer Wood Infinity 916-338-9200

IMPACT!



Nielsen Broadcast Data Systems

Songs posting gains in detections or with a percentage loss in detections equal to or better than the monitored downtime percentage in the format. Songs listed in order of detections.

*Indicates station experienced between 24 and 56 hours of monitored downtime during the chart week.

TOP 10 BOUND

Total Detections/Gain

DAVID LEE MURPHY 2892/194 Loco (Audiom/Koch) ☆

Total Stations: 121 Chart Move: 12-12 H (17), M (85), L (19) Airplay Adds: 1

Table with columns for station, song, and detections. Includes stations like WFLA, WTVT, WFTS, etc.

CLAY WALKER 2608/146 I Can't Sleep (RCA)

Total Stations: 121 Chart Move: 13-13 H (14), M (79), L (28) Airplay Adds: 1

Table with columns for station, song, and detections. Includes stations like WFLA, WTVT, WFTS, etc.

SHEDAISY 2397/80 Passenger Seat (Lyric Street) ☆

Total Stations: 120 Chart Move: 14-14 H (7), M (77), L (36) Airplay Adds: 0

Table with columns for station, song, and detections. Includes stations like WFLA, WTVT, WFTS, etc.

Table with columns for station, song, and detections. Includes stations like WPCV, WWSN, WWSM, etc.

REBA MCENTIRE 2379/149 Somebody (MCA Nashville)

Total Stations: 120 Chart Move: 15-15 H (6), M (83), L (31) Airplay Adds: 3

Table with columns for station, song, and detections. Includes stations like WFLA, WTVT, WFTS, etc.

BRAD PAISLEY FEATURING ALISON KRAUSS 2280/244 Whiskey Lullaby (Arista Nashville) ☆

Total Stations: 121 Chart Move: 17-16 H (5), M (76), L (40) Airplay Adds: 8

Table with columns for station, song, and detections. Includes stations like WFLA, WTVT, WFTS, etc.

BILLY CURRINGTON 2260/137 I Got A Feelin' (Mercury)

Total Stations: 118 Chart Move: 16-17 H (8), M (74), L (36) Airplay Adds: 2

Table with columns for station, song, and detections. Includes stations like WFLA, WTVT, WFTS, etc.

Table with columns for station, song, and detections. Includes stations like WFLA, WTVT, WFTS, etc.

JOSH GRACIN 2046/288 I Want To Live (Lyric Street) ☆

Total Stations: 120 Chart Move: 19-18 H (4), M (73), L (43) Airplay Adds: 5

Table with columns for station, song, and detections. Includes stations like WFLA, WTVT, WFTS, etc.

KENNY CHESNEY 1859/495 I Go Back (BNA) ☆

Total Stations: 113 Chart Move: 23-19 H (4), M (62), L (47) Airplay Adds: 26

Table with columns for station, song, and detections. Includes stations like WFLA, WTVT, WFTS, etc.

EMERSON DRIVE 1574/53 Last One Standing (DreamWorks)

Total Stations: 119 Chart Move: 21-23 H (1), M (50), L (68) Airplay Adds: 1

Table with columns for station, song, and detections. Includes stations like WFLA, WTVT, WFTS, etc.

Table with columns for station, song, and detections. Includes stations like WFLA, WTVT, WFTS, etc.

ANDY GRIGGS 1790/308 She Thinks She Needs Me (RCA) ☆

Total Stations: 118 Chart Move: 22-20 H (2), M (60), L (56) Airplay Adds: 10

Table with columns for station, song, and detections. Includes stations like WFLA, WTVT, WFTS, etc.

JOE DIFFIE 1599/35 Tougher Than Nails (Broken Bow) ☆

Total Stations: 116 Chart Move: 20-22 H (4), M (50), L (62) Airplay Adds: 2

Table with columns for station, song, and detections. Includes stations like WFLA, WTVT, WFTS, etc.

EMERSON DRIVE 1574/53 Last One Standing (DreamWorks)

Total Stations: 119 Chart Move: 21-23 H (1), M (50), L (68) Airplay Adds: 1

Table with columns for station, song, and detections. Includes stations like WFLA, WTVT, WFTS, etc.

Table with columns for station, song, and detections. Includes stations like WFLA, WTVT, WFTS, etc.

TERRI CLARK 1541/202 Girls Lie Too (Mercury) ☆

Total Stations: 113 Chart Move: 24-24 H (1), M (46), L (66) Airplay Adds: 6

Table with columns for station, song, and detections. Includes stations like WFLA, WTVT, WFTS, etc.

MARTINA MCBRIDE 1528/247 How Far (RCA) ☆

Total Stations: 120 Chart Move: 26-25 H (0), M (53), L (67) Airplay Adds: 6

Table with columns for station, song, and detections. Includes stations like WFLA, WTVT, WFTS, etc.

RACHEL PROCTOR 1440/117 Me And Emily (BNA) ☆

Total Stations: 117 Chart Move: 25-26 H (2), M (39), L (76) Airplay Adds: 5

Table with columns for station, song, and detections. Includes stations like WFLA, WTVT, WFTS, etc.

H=Heavy (35+ Detections), M=Medium (15-34), L=Light (Under 15). Airpower awarded to songs appearing in the top 20 on both the Airplay and Audience charts for the first time with increases in both detections and audience. Initial impact: songs appearing on this page for the first time in summary form. Airplay Adds are songs with 6 or more detections at new stations this week. The Airplay Leaderboard ranks taste-maker stations that have been the most successful in identifying future hit songs as measured by the amount of AIRPOWER titles for which they were Airplay Leaders. Refer to each format's Power Playlists page to see this week's Airplay Leaders. ☆ Indicates title earned HitPredictor status in research data provided by Promosquad.

IMPACT!



Nielsen Broadcast Data Systems

Songs posting gains in detections or with a percentage loss in detections equal to or better than the monitored downtime percentage in the format. Songs listed in order of detections.

*Indicates station experienced between 24 and 56 hours of monitored downtime during the chart week.

Table with columns for station, song, and chart position. Includes entries like WDSY, WYFF, WYUZ, etc.

JIMMY BUFFETT 1346/670 Hey Good Lookin' (RCA) Total Stations: 96 Chart Move: 36-27 Airplay Adds: 29

Table with columns for station, song, and chart position. Includes entries like WYFF, WYUZ, WYAT, etc.

LEE ANN WOMACK 1300/53 The Wrong Girl (MCA Nashville) Total Stations: 117 Chart Move: 27-28 Airplay Adds: 1

Table with columns for station, song, and chart position. Includes entries like WYFF, WYUZ, WYAT, etc.

JEFF BATES 1165/94 I Wanna Make You Cry (RCA) Total Stations: 115 Chart Move: 28-29 Airplay Adds: 3

Table with columns for station, song, and chart position. Includes entries like WYFF, WYUZ, WYAT, etc.

Table with columns for station, song, and chart position. Includes entries like WKHX, WKIS, WKMG, etc.

JOE NICHOLS 1037/58 If Nobody Believed In You (Universal South) Total Stations: 115 Chart Move: 29-30 Airplay Adds: 4

Table with columns for station, song, and chart position. Includes entries like WKHX, WKIS, WKMG, etc.

TOP 30 BOUND

Total Detections/Gain

BIG & RICH 858/32 Save A Horse (Ride A Cowboy) (Warner Bros./WRN) Total Stations: 95 Chart Move: 31-31 Airplay Adds: 4

TRACE ADKINS 809/38 Rough & Ready (Capitol) Total Stations: 96 Chart Move: 33-33 Airplay Adds: 1

AMY DALLEY 802/18 Men Don't Change (Curb) Total Stations: 102 Chart Move: 32-34 Airplay Adds: 1

BRAD COTTER 463/58 I Meant To (Epic/EMN) Total Stations: 61 Chart Move: 46-45 Heavy (0)

BILLY DEAN 788/17 Thank God I'm A Country Boy (View 2/Curb) Total Stations: 91 Chart Move: 34-35 Heavy (1) KMLE Airplay Adds: 3

TIM MCGRAW 765/765 Live Like You Were Dying (Curb) Total Stations: 101 Chart Move: Debut 36 Heavy (0) Airplay Adds: 54

JULIE ROBERTS 724/45 Break Down Here (Mercury) Total Stations: 99 Chart Move: 35-37 Heavy (0) Airplay Adds: 2

THE JENKINS 672/0 Blame It On Mama (Capitol) Total Stations: 102 Chart Move: 37-38 Heavy (0) Airplay Adds: 4

SARA EVANS 614/134 Suds In The Bucket (RCA) Total Stations: 68 Chart Move: 42-40 Heavy (0) Airplay Adds: 9

CHELY WRIGHT 557/22 Back Of The Bottom Drawer (Vivaton!) Total Stations: 90 Chart Move: 40-41 Medium (8), Light (82) Airplay Adds: 3

PHIL VASSAR 550/32 In A Real Love (Arista Nashville) Total Stations: 64 Chart Move: 41-42 Heavy (0) Airplay Adds: 3

JIMMY WAYNE 513/36 You Are (DreamWorks) Total Stations: 51 Chart Move: 43-43 Heavy (1) KEYY Airplay Adds: 3

TRAVIS TRITT 471/112 The Girl's Gone Wild (Columbia) Total Stations: 70 Chart Move: 48-44 Heavy (0) Airplay Adds: 15

BLAINE LARSEN 76/51 In My High School (Giantslayer) Total Stations: 32 Chart Move: Debut 60 Heavy (0) Airplay Adds: 7

BRAD COTTER 463/58 I Meant To (Epic/EMN) Total Stations: 61 Chart Move: 46-45 Heavy (0)

Medium (1), Light (50) Airplay Adds: 5

CRAIG MORGAN 451/36 Look At Us (Broken Bow) Total Stations: 59 Chart Move: 45-46 Heavy (0) Airplay Adds: 5

DIERKS BENTLEY 320/106 How Am I Doin' (Capitol) Total Stations: 37 Chart Move: 50-49 Heavy (1) KHKI Airplay Adds: 8

KELLIE COFFEY 303/204 Dance With My Father (BNA) Total Stations: 24 Chart Move: Debut 50 Heavy (0) Airplay Adds: 14

RUSHLOW 293/-1 Sweet Summer Rain (Lyric Street) Total Stations: 46 Chart Move: 49-51 Heavy (0) Airplay Adds: 1

STEVE HOLY 264/122 Put Your Best Dress On (Curb) Total Stations: 40 Chart Move: 55-53 Heavy (0) Airplay Adds: 9

SHERRIE AUSTIN 232/102 Son Of A Preacher Man (Broken Bow) Total Stations: 46 Chart Move: 56-54 Heavy (0) Airplay Adds: 4

CLINT BLACK 208/11 The Boogie Man (Equity) Total Stations: 31 Chart Move: 51-55 Heavy (0) Airplay Adds: 2

BLUE COUNTY 194/68 That's Cool (Asylum-Curb) Total Stations: 34 Chart Move: 57-56 Heavy (0) Airplay Adds: 7

BLAINE LARSEN 76/51 In My High School (Giantslayer) Total Stations: 32 Chart Move: Debut 60 Heavy (0) Airplay Adds: 7

CHART BOUND

Total Detections/Gain

KID ROCK 65/5 Single Father (Atlantic) Total Stations: 7 Heavy (0) Airplay Adds: 5

MALIBU STORM 62/37 Photograph (Rounder) Total Stations: 37 Heavy (0) Airplay Adds: 1

BUDDY JEWELL 58/33 One Step At A Time (Columbia) Total Stations: 28 Heavy (0) Airplay Adds: 2

KEITH URBAN 55/2 You Look Good In My Shirt (Capitol) Total Stations: 5 Heavy (0) Airplay Adds: 3

SCOTTY EMERICK 51/29 The Watch (DreamWorks) Total Stations: 13 Heavy (0) Airplay Adds: 3

CAROLYN DAWN JOHNSON 51/25 Die Of A Broken Heart (Arista Nashville) Total Stations: 13 Heavy (0) Airplay Adds: 3

KEITH BRYANT 35/5 Ridin' With The Legend (Lofton Creek) Total Stations: 14 Heavy (0) Airplay Adds: 3

TRENT WILLMON 30/9 The Good Life (Columbia) Total Stations: 1 Heavy (0) Airplay Adds: 7

KENNY CHESNEY 29/2 Some People Change (BNA) Total Stations: 2 Heavy (0) Airplay Adds: 7

PAT GREEN 26/5 California (Republic/Universal South) Total Stations: 1 Heavy (0) Airplay Adds: 7

H=Heavy (35+ Detections), M=Medium (15-34), L=Light (Under 15). Airpower awarded to songs appearing in the top 20 on both the Airplay and Audience charts for the first time with increases in both detections and audience. Initial impact: songs appearing on this page for the first time in summary form. Airplay Adds are songs with 6 or more detections at new stations this week. The Airplay Leaderboard ranks taste-maker stations that have been the most successful in identifying future hit songs as measured by the amount of AIRPOWER titles for which they were Airplay Leaders. Refer to each format's Power Playlists page to see this week's Airplay Leaders. * indicates time earned HitPredictor status in research data provided by Promosquad.



Is Active Rock Less Active?

Continued from page 1

more difficult, but when we do get a shot on a record, hopefully we're getting a real shot."

WAAF Boston PD Keith Hastings says his station has been adding less music. "It's partially a quality issue, but I'd also say it has to do with the types of bands that are being signed and worked," he says. "I've read recent articles in other trades defining active rock as a format that by definition must play new music. I would offer the counter-argument that active rock is a tempo- and texture-based format, and when there aren't currents available that fit those definitions, then we have no choice but to take a half-step back into our library to maintain the essence of our radio station."

"Music is lasting longer, and many stations have cut down on their playlists and leaned more toward tried-and-true, well-researched records," Universal VP of promotion Howard Leon says. "And there are some records that just linger before research starts kicking in."

"People are being a little more cautious waiting for a valid story," WGIR Manchester, N.H., PD Valorie Knight says. "There are legitimate songs that are doing well at the top of the chart and the top of our playlists that, when we look at our mediums and lights, there's nothing strong enough to move up in their place. I'm hanging on to Audioslave, Jet, Godsmack and Shinedown because they're hits."

NOT THAT DIFFERENT

Although labels and radio say they've noticed the format adding less music, that's not necessarily the case. Comparatively speaking, active is adding about as many records as it did last year. A look at the data published in the four issues spanning April 23 to May 14 shows stations with an average of 2.38, 2.5, 2.43 and 2.67 Airplay Adds per week, respectively. That's similar to the 2.27, 2.56, 2.2 and 2.63 for the corresponding issues in 2003. 2002 showed a slightly higher number of Airplay Adds for the same time period, with 2.65, 2.9, 2.79 and 3.35 songs on average.

Research and listeners' passion for the music play into the equation. "Songs are researching and sticking around longer," Gamble says. "Jet's 'Cold Hard Bitch' is sitting at around 850 spins, and it's still doing great. When you have records that test, continue to test and the audience likes, it basically creates a tightness at the bottom of the list. So you have to be more selective about what you put in."

Some labels tip their hat to the format's perseverance in breaking artists. "Over the last couple of years, the radio and record industries have jointly taken awhile to truly break bands rather than just give something five or six weeks and dump it," Zomba Label Group senior director of rock formats Joanne Grand says. "It started with Trapt and Smile Empty Soul and Three Days Grace. With that comes less transition every week and less drops. There's more need to keep records in overnights until they move up, rather than put them in overnights and then dump them because they don't work. So programmers are being more selective about dumping records in just because it's an impact week, because they're really trying to develop artists that work."

Others say there are too many choices for programmers. "There's too much music being released, and so many records get put out that

everyone is trying to get their heads above water," Roadrunner VP of promotion Mark Abramson says. "So a lot of records die before [radio] even finds out what they are. The problem isn't that radio is adding too little music, the problem is that labels are putting out too much music and trying to jam it all in there all at once."

LESS STRESS ON IMPACT DATE?

Grand says artist development stories like that of Trapt, Smile Empty Soul and Three Days

Grace have led to a climate in which the continued growth of an artist is more important than a huge add week. "I think you would be hard pressed to find labels who would rather be No. 1 added and not have anything on the band six months from now," she says. "They would rather be on the most-added list for a while rather than a specific No. 1 added. I think the [slow add weeks] probably reflect the reality of the listeners a lot more than the industry's reality."

"Adds are just spread out more," Leon says. "To be a No. 1 most added it takes less than it used to, because people are going in different directions. If I've got a band and I have to take them over to a meet and greet, it's nearly impossible to keep them all together to get from point A to point B. They start wandering off. Radio is like that—they wander too."

Abramson says a good first week is still important, though. "There's a distinct lack of patience going on in the business, because the business is in a tough situation," he says. "You have to have a strong impact week so that everyone can see that you have something going on, which convinces them to give it a shot and keeps the momentum going. Once you're on the chart and growing, you've earned a bit of equity where you can convince people to stick around."

Sometimes programmers wait to watch a song develop before adding it, which might also lead to less-than-stellar add weeks for some records. "If it's a project that we don't feel locally fits the essence of WAAF, we'll sit back and watch and see if anything else develops at similar radio stations that might have taken the shot," Hastings says.

"I've got a Flaw record that, despite [selling extremely well] its first week and debuting at No. 42, hasn't necessarily found its audience," he says. "And I'm hearing people say that they need to see a national picture develop with them even though the record debuted at No. 20 in their market and their competition isn't playing them."

HOW STRONG IS THE FORMAT?

Active rock remains in a state of flux. KEGL (the Eagle) Dallas' recent transformation into an AC station gave the format one less top 10 market. "I suppose the majority of people that just do rock promotion feel the same way they did when the End [modern KNDD] in Seattle went classic modern," Burrs says. "When you start seeing your format diminishing, it's scary. It's less outlets to promote."

Yet Miami's WZTA (Zeta) just returned to the active fold, and WZZN, which had been leaning active for much of the past year, finally got active status earlier this year. "Active rock has not been acting much differently than it always has, but it remains one of the most focused formats," Leon



HASTINGS



ABRAMSON

Xtreme And Stern



When Howard Stern's show made its annual pilgrimage to Las Vegas, the king of all media got in some hang time with his Sin City affiliate, modern KXTE (Xtreme Radio). Pictured with Stern, left, is PD Dave Wellington. (Photo: KXTE)

RADIO CONCERT MONITOR

DATE	STATION	EVENT	PROMOTIONS DIRECTOR
May 30	WBCN Boston	River Rave	Chachi Loprete
	APPEARING: Apartment 26, the Darkness, Dashboard Confessional, the Distillers, Everlast, Finger Eleven, the Living End, Mrnorth, My Morning Jacket, New Found Glory, the Offspring, R.O.D., Puddle of Mudd, Story of the Year, Yeah Yeah Yeahs		
June 6	WSUN Tampa, Fla.	New Rock Spectacle	Dan Connelly
	APPEARING: Authority Zero, the Darkness, Steriogram		

Let us monitor your event! Call Bram Teitelman at 646-654-4727 or e-mail bram@airplaymonitor.com

No 'Problems' For Jigga At HFStival



Jay-Z, one of the performers at modern WHFS (99HFS) Washington, D.C.'s annual HFStival, took a second to pose with PD Lisa Worden. (Photo: Island)

says. "And modern is more fragmented than it has ever been. With Zeta moving back to active rock and [the flip at] WZZN, active rock is really poised to regain a sort of dominance, because they continue to be so focused and you have greater success on a national level. At modern, you know the five stations you can get on a really hip record, and that doesn't mean it will translate nationally. These active guys are willing to listen."

"Modern is just too scattered now," says an active rock PD who asked to remain anonymous. "Who wants to hear Slipknot and Franz Ferdi-

nand on the same station? The great thing about active rock is that we know what we're going after—we're going after guys. They're a little bit older, and they have that expectation that when they punch that dial, they want it loud."

"Active rock has the ability to ebb and flow with the times a bit more," Abramson says. "It's based less on the hip and current trends, so rock in general is a healthy format, because it has the flexibility more than hit-based formats that have to bob and weave with the trends. Rock is solid, it just needs to grow some more artists."

WEEKLY AIRPLAY MONITOR Nielsen Broadcast Data Systems

Songs ranked by number of detections. Playlists are listed in order of TSA weekly cumes, beginning with the highest-cuming station. Cumes are updated twice yearly following the release of the spring and fall Arbitron surveys. The number of stations shown each week varies depending upon space.

denotes songs with 6 or more detections at station for first time this week.

KROQ Los Angeles PD: Kevin Weatherly APD: Gene Sandblom MD: Matt Smith Infinity 323-930-1067

WXRK New York OM: Robert Cross MD: Mike Peier Infinity 212-314-9230

WKQX Chicago PD: Mike Stern APD/MD: Jacent Jackson Emms 312-527-8348

WBCN Boston VP/Pgm: Deidip APD/MD: Steven Strick AMD: Josh Arons Infinity 617-266-1111

WWDC Washington, DC OM: Joe Bevilacqua MD: Danielle Flynn AMD: Greg Roche Clear Channel 301-587-7100

WHFS Washington, DC PD: Lisa Worden APD: Libby Carstensen MD: Pat Ferrise Infinity 301-306-0991

KITS San Francisco PD: Sean Demery APD/MD: Aaron Axelsen Infinity 415-402-6700

KTBS Houston PD: Vince Richards MD: Don Jantzen Clear Channel 713-212-8044

WPLY Philadelphia PD: Jim McGuinn MD: Dan Fein AMD: Electra Radio One 610-276-1100

CIMX Detroit PD: Murray Brookshaw APD: Vince Cannova MD: "Phat" Matt Franklin CHUM Group 519-258-8888

WNNX Atlanta Dir/Pgm: Leslie Fram PD: Chris Williams MD: Jay Harren Susquehanna 404-266-0997

KDGE Dallas PD: Duane Doherty APD/MD: Alan Ay Clear Channel 972-770-7777

KZON Phoenix PD: Kevin Mannion MD: Mitzie Lewis Infinity 602-258-8181

KNDD Seattle PD: Phil Manning APD: Jim Keller Entercom 206-622-3251

WZTA Miami OM: Rob Roberts Dir/Rock Pgm: Troy Hanson MD: Mike Killabrew Clear Channel 954-862-2000

KPNT St. Louis PD: Tommy Mattern MD: Frizz Emms 314-231-1057

KTCL Denver Dir/Pgm: Mike O'Connor Interim MD: Hill Jordan Clear Channel 303-713-8000

WXDX Pittsburgh OM: John Mosschitta MD: Vinnie Ferguson Clear Channel 412-937-1441

WOCL Orlando PD: Bobby Smith Infinity 407-919-1000

XTRA San Diego Dir/Pgm: Jim Richards MD: "Smiling Marty" Whitney Clear Channel 858-292-2000

WJRR Orlando PD: Pat Lynch MD: Brian Dickerman Clear Channel 407-916-7790

KWOD Sacramento SM: Curtiss Johnson PD: Ron Bunce MD: Marco Collins Entercom 916-334-7777

WRZX Indianapolis Dir. FM Pgm: Scott Jameson MD: Michael Young Clear Channel 317-257-7565

WXTM Cleveland PD: Kim Monroe APD: Dom Nardella MD: Pete Schieck Infinity 216-861-0100

Songs posting gains in detections or with a percentage loss in detections equal to or better than the monitored downtime percentage in the format. Songs listed in order of detections.

*Indicates station experienced between 24 and 36 hours of monitored downtime during the chart week.

TOP 10 BOUND

Total Detections/Gain

MUSE 1399/141
Time Is Running Out (Taste Media/Warner Bros.)
Total Stations: 73 Chart Move: 14-12
H (9), M (40), L (24) Airplay Adds: 6

Table with columns for station, format, and chart position for MUSE's 'Time Is Running Out'.

AIRPLAY LEADER

(FIRST STATION TO 150 PLAYS)

KUCD - Honolulu, HI
PD: Jamie Hyatt
Date: 04/25/04



Total Stations: 75 Chart Move: 16-17
H (8), M (32), L (35) Airplay Adds: 1

Table with columns for station, format, and chart position for KUCD's Airplay Leader.

Table with columns for station, format, and chart position for various stations.

STORY OF THE YEAR 953/81

Anthem Of Our Dying Day (Maverick/Reprise) ☆

Total Stations: 60 Chart Move: 25-24
H (3), M (32), L (25) Airplay Adds: 2

Table with columns for station, format, and chart position for Story of the Year.

Table with columns for station, format, and chart position for various stations.

BLINK-182 889/201

Down (Geffen) ☆

Total Stations: 59 Chart Move: 30-28
H (6), M (19), L (34) Airplay Adds: 12

Table with columns for station, format, and chart position for Blink-182.

Table with columns for station, format, and chart position for various stations.

BREAKING BENJAMIN 655/73

So Cold (Hollywood)

Total Stations: 48 Chart Move: 35-32
H (2), M (18), L (28) Airplay Adds: 4

Table with columns for station, format, and chart position for Breaking Benjamin.

SEETHER FEATURING AMY LEE 1325/160

Broken (Wind-up) ☆

Total Stations: 61 Chart Move: 18-14
H (10), M (40), L (11) Airplay Adds: 6

Table with columns for station, format, and chart position for Seether.

AIRPOWER BOUND

Total Detections/Gain

SWITCHFOOT 1229/86

Dare You To Move (Red Ink/Columbia) ☆

Total Stations: 60 Chart Move: 19-18
H (9), M (35), L (16) Airplay Adds: 3

Table with columns for station, format, and chart position for Switchfoot.

SHINEDOWN 940/91

45 (Atlantic) ☆

Total Stations: 43 Chart Move: 26-25
H (10), M (21), L (12) Airplay Adds: 1

Table with columns for station, format, and chart position for Shinedown.

THE VON BONDIES 888/100

C'mon C'mon (Sire/Reprise)

Total Stations: 56 Chart Move: 28-29
H (5), M (24), L (27) Airplay Adds: 4

Table with columns for station, format, and chart position for The Von Bondies.

AUF DER MAUR 605/27

Followed The Waves (Capitol) ☆

Total Stations: 52 Chart Move: 34-34
H (0), M (20), L (32) Airplay Adds: 2

Table with columns for station, format, and chart position for Auf der Maur.

THREE DAYS GRACE 1311/143

Just Like You (Jive/Zomba) ☆

Total Stations: 72 Chart Move: 17-15
H (8), M (43), L (21) Airplay Adds: 2

Table with columns for station, format, and chart position for Three Days Grace.

SLIPKNOT 1054/89

Duality (Roadrunner/IDJMG)

Total Stations: 62 Chart Move: 23-20
H (7), M (28), L (27) Airplay Adds: 1

Table with columns for station, format, and chart position for Slipknot.

FRANZ FERDINAND 916/170

Take Me Out (Domino/Epic)

Total Stations: 65 Chart Move: 29-26
H (6), M (23), L (36) Airplay Adds: 2

Table with columns for station, format, and chart position for Franz Ferdinand.

THORNLEY 867/46

So Far So Good (604/Roadrunner/IDJMG)

Total Stations: 61 Chart Move: 27-30
H (5), M (25), L (31) Airplay Adds: 0

Table with columns for station, format, and chart position for Thornley.

NICKELBACK 599/140

Feel'n' Way Too Damn Good (Roadrunner/IDJMG)

Total Stations: 35 Chart Move: Debut 35
H (2), M (20), L (13) Airplay Adds: 3

Table with columns for station, format, and chart position for Nickelback.

SMILE EMPTY SOUL 1022/20

Silhouettes (ThroBack/Lava)

Total Stations: 57 Chart Move: 22-23
H (4), M (29), L (24) Airplay Adds: 2

Table with columns for station, format, and chart position for Smile Empty Soul.

THE CURE 897/248

The End Of The World (Fiction/Geffen) ☆

Total Stations: 59 Chart Move: 33-27
H (5), M (27), L (27) Airplay Adds: 11

Table with columns for station, format, and chart position for The Cure.

THE DARKNESS 699/63

Growing On Me (Atlantic) ☆

Total Stations: 49 Chart Move: 32-31
H (2), M (19), L (28) Airplay Adds: 4

Table with columns for station, format, and chart position for The Darkness.

NEW FOUND GLORY 1275/104

All Downhill From Here

Table with columns for station, format, and chart position for New Found Glory.

H=Heavy (30+ at new stations this week. The Airplay Leaderboard ranks taste-maker stations that have been the most successful in identifying future hit songs as measured by the amount of AIRPOWER titles for which they were Airplay Leaders. Refer to each format's Power Playlists page to see this week's Airplay Leaders. M=Medium (15-29), L=Light (Under 15). Airpower awarded to songs appearing in the top 20 on both the Airplay and Audience charts for the first time with increases in both detections and audience. ☆ Initial impact: songs appearing on this page for the first time in summary form. Airplay Adds indicates title earned HitPredictor status in research data provided by Promosquad.

MODERN ROCK AIRPLAY Monitor Nielsen Broadcast Data Systems

Songs posting gains in detections or with a percentage loss in detections equal to or better than the monitored downtime percentage in the format. Songs listed in order of detections. *Indicates station experienced between 24 and 36 hours of monitored downtime during the chart week.

THE KILLERS 594/116 Somebody Told Me (Island/IDJMG) Total Stations: 55 Chart Move: 39-36 H (2), M (16), L (37) Airplay Adds: 6

Table with columns for station, song, and detections. Includes stations like NY, MI, IL, OH, WA, etc.

Table with columns for station, song, and detections. Includes stations like Houston, Atlanta, Miami, etc.

DASHBOARD CONFESSIONAL 502/194 Vindicated (Vagrant/Interscope) Total Stations: 55 Chart Move: Debut 38 H (2), M (8), L (45) Airplay Adds: 14

Table with columns for station, song, and detections. Includes stations like New York, L.A., Chicago, etc.

SNOW PATROL 442/87 Spitting Games (Polydor/A&M/Interscope) Total Stations: 49 Chart Move: Debut 39 H (2), M (12), L (35) Airplay Adds: 3

Table with columns for station, song, and detections. Includes stations like New York, L.A., Chicago, etc.

SNOW PATROL 442/87 Spitting Games (Polydor/A&M/Interscope) Total Stations: 49 Chart Move: Debut 39 H (2), M (12), L (35) Airplay Adds: 3

Table with columns for station, song, and detections. Includes stations like New York, L.A., Chicago, etc.

BAD RELIGION 363/10 Los Angeles Is Burning (Epitaph) Total Stations: 23 Chart Move: Debut 39 H (2), M (12), L (35) Airplay Adds: 3

Table with columns for station, song, and detections. Includes stations like New York, L.A., Chicago, etc.

EARSHOT 338/72 Wait (Warner Bros.) Total Stations: 34 Chart Move: Debut 39 H (2), M (12), L (35) Airplay Adds: 3

Table with columns for station, song, and detections. Includes stations like New York, L.A., Chicago, etc.

STELLASTARR 324/13 My Coco (RCA/RMG) Total Stations: 23 Chart Move: Debut 39 H (2), M (12), L (35) Airplay Adds: 3

Table with columns for station, song, and detections. Includes stations like New York, L.A., Chicago, etc.

CROSSFADE 237/14 Cold (FG/Columbia) Total Stations: 21 Chart Move: Debut 39 H (2), M (12), L (35) Airplay Adds: 3

Table with columns for station, song, and detections. Includes stations like New York, L.A., Chicago, etc.

THE KICKS 218/10 Mir (TVT) Total Stations: 22 Chart Move: Debut 39 H (2), M (12), L (35) Airplay Adds: 3

Table with columns for station, song, and detections. Includes stations like New York, L.A., Chicago, etc.

FLAW 213/17 Recognize (Republic/Universal/UMRG) Total Stations: 24 Chart Move: Debut 39 H (2), M (12), L (35) Airplay Adds: 3

Table with columns for station, song, and detections. Includes stations like New York, L.A., Chicago, etc.

MORRISSEY 549/67 Irish Blood, English Heart (Attack/Sanctuary) Total Stations: 56 Chart Move: 37-37 H (3), M (13), L (40) Airplay Adds: 1

Table with columns for station, song, and detections. Includes stations like New York, L.A., Chicago, etc.

H=Heavy (30+ Detections), M=Medium (15-29), L=Light (Under 15). Airpower awarded to songs appearing in the top 20 on both the Airplay and Audience charts for the first time with increases in both detections and audience. *Initial impact: songs appearing on this page for the first time in summary form. Airplay Adds are songs with 6 or more detections at new stations this week. The Airplay Leaderboard ranks taste-maker stations that have been the most successful in identifying future hit songs as measured by the amount of AIRPOWER titles for which they were Airplay Leaders. Refer to each format's Power Playlists page to see this week's Airplay Leaders. ☆ indicates title earned HiPredictor status in research data provided by Promosquad.

MODERN ROCK AIRPLAY Monitor Nielsen Broadcast Data Systems

Songs ranked by number of detections. Playlists are listed in order of TSA weekly cume, beginning with the highest-cuming station. Cumes are updated twice yearly following the release of the spring and fall Arbitron surveys. The number of stations shown each week varies depending upon space. * denotes songs with 6 or more detections at station for first time this week.

WBUR Providence PD: Seth Resler MD: Chris Novello Brown 401-272-9550

KBZT San Diego DM: John Dimick PD: Garrett Michaels APD/MD: Mike Halloran Jefferson Pilot 619-297-9595

WEND Charlotte DM/MD: Jack Daniel Clear Channel 704-338-9600

KEDJ Phoenix PD: Nancy Stevens MD: Robin Nash Westwood 480-423-9255

WSUN Tampa DM: Chuck Beck PD: Shark Cox 727-577-7131

KCNL San Francisco DM: Brian Thomas SM/PD: John Allers Clear Channel 408-453-5400

KXRX Salt Lake City PD: Todd Nuke 'Em APD/MD: Artie Fufkin Simmons 801-524-2600

KCIX Riverside/San Bernardino DM: Kelli Cluque APD/MD: Daryl James All Pro 909-384-1039

KXTE Las Vegas PD: Dave Wellington APD/MD: Chris Ripley Infinity 702-889-7500

KNRK Portland, OR SM/PD: Mark Hamilton APD: Jaime Cooley Entercom 615-223-1441

WBZZ Nashville DM: Jim Patrick PD/MD: Russ Schenck Cromwell 615-399-1029

KRBZ Kansas City PD: Lazlo MD: Jason Ulant Entercom 913-677-8998

Compiled from a national sample of data supplied by Nielsen Broadcast Data Systems to Airplay Monitor. 59 active rock stations are electronically monitored 24 hours a day, 7 days a week. © 2004 VNU Business Media, Inc. All rights reserved.

Main chart table with columns: THIS WEEK, LAST WEEK, WKS. ON CHART, TITLE/IMPRINT/PROMOTION LABEL, ARTIST, DETECTIONS (TW, LW), AUDIENCE (MILLIONS, RANK). Includes entries like 'COLD HARD BITCH' and 'FEELIN' WAY TOO DAMN GOOD'.

Songs ranked by number of detections. Songs showing an increase in detections over the previous week, regardless of chart movement. A song will also receive a bullet if its percentage loss in detections does not exceed the percentage of monitored station downtime for the format.

most airplay adds ACTIVE ROCK NEW STATIONS 11 EARSHOT Wait (Warner Bros.) 11 BREAKING BENJAMIN So Cold (Hollywood) 5 FLAW Recognize (Republic/Universal/UMRG) 5 HOOBASTANK Same Direction (Island/IDJMG) 5 NICKELBACK Feelin' Way Too Damn Good (Roadrunner/IDJMG) 4

GREATEST GAINERS ACTIVE ROCK INCREASE IN DETECTIONS NICKELBACK • Feelin' Way Too Damn Good (Roadrunner/IDJMG) +146 SOIL • Redefine (JRMG) +131 VELVET REVOLVER • Slither (RCA/RMG) +111 CROSSFADE • Cold (FG/Columbia) +97 THREE DAYS GRACE • Just Like You (Jive/Zomba) +87

Monitor RECURRENTS ACTIVE ROCK Table with columns: RANK, TITLE, ARTIST, IMPRINT/PROMOTION LABEL, DETECTIONS (TW, LW). Includes 'NUMB' by Linkin Park and 'SO FAR AWAY' by Staind.

Table with columns: RANK, TITLE, ARTIST, IMPRINT/PROMOTION LABEL, DETECTIONS (TW, LW). Includes 'SHOW ME HOW TO LIVE' by Audioslave and 'LIBERATE' by Disturbed.

Recurrents are titles that have appeared on the Active Rock Airplay chart for 26 weeks and have dropped below the top 20.

ACTIVE ROCK

Monitor ROCK PANELS ACTIVE (59) HERITAGE (41) List of station call letters and city names for active and heritage stations.

ACTIVE ROCK

FOR WEEK ENDING MAY 23, 2004

LOW PLAYLISTS



Songs ranked by number of detections. Playlists are listed in order of TSA weekly cumes, beginning with the highest-cuming station. Cumes are updated twice yearly following the release of the spring and fall Arbitron surveys. The number of stations shown each week varies depending upon space.

■ denotes songs with 6 or more detections at station for first time this week.

WSPH Philadelphia
VP/Prog: Tim Sabean
APD: Gil Edwards
MD: Spike
Infinity 215-625-9460
List of 30 songs with radio stations and their respective positions.

WZZM Chicago
PD: Bill Gamble
APD: Steve Levy
MD: James VanOsdol
ABC 312-984-9923
List of 30 songs with radio stations and their respective positions.

WRIF Detroit
OM: Doug Podell
APD/MD: Mark Pennington
Greater Media 248-547-0101
List of 30 songs with radio stations and their respective positions.

WMMS Cleveland
PD: Bo Matthews
Clear Channel 216-520-2600
List of 30 songs with radio stations and their respective positions.

KXRR Minneapolis
PD: Wade Liner
APD/MD: Pablo
ABC/Disney 612-617-4000
List of 30 songs with radio stations and their respective positions.

WAAF Boston
PD: Keith Hastings
MD: Mistress Carrie
Entercam 617-779-5800
List of 30 songs with radio stations and their respective positions.

WEBN Cincinnati
OM/PD: Scott Reinhart
MD: Rick "The Dude" Vaske
Clear Channel 513-621-9326
List of 30 songs with radio stations and their respective positions.

KUPD Phoenix
PD: J.J. Jeffries
MD: Larry McFeele
Saudusky 480-838-0400
List of 30 songs with radio stations and their respective positions.

KQRC Kansas City
PD: Bob Edwards
APD/MD: Dave Fritz
Entercam 913-677-8998
List of 30 songs with radio stations and their respective positions.

WXTB Tampa
Dir/FM Pgm: Brad Hardin
APD/MD: Brian Medlin
Clear Channel 813-832-1000
List of 30 songs with radio stations and their respective positions.

KISS San Antonio
OM: Virgil Thompson
APD: Kevin Vargas
MD: CJ Cruz
Cox 210-646-0105
List of 30 songs with radio stations and their respective positions.

WYY Baltimore
PD: Dave Hill
APD/MD: Rob Heckman
Hearst 410-889-0098
List of 30 songs with radio stations and their respective positions.

KBPI Denver
Dir/Pgm: Mike O'Connor
PD: Bob Richards
APD/MD: Willie B.
Clear Channel 303-713-8000
List of 30 songs with radio stations and their respective positions.

KISW Seattle
PD: Dave Richards
APD/MD: Ryan Castle
Entercam 206-285-7625
List of 30 songs with radio stations and their respective positions.

KSRX San Antonio
OM: John Cook
MD: Mark Landis
Infinity 210-528-5500
List of 30 songs with radio stations and their respective positions.

KIOZ San Diego
Dir. FM Pgm: Jim Richards
PD/MD: Shauna Moran
Clear Channel 858-292-2000
List of 30 songs with radio stations and their respective positions.

WCCW Hartford
OM/PD: Michael Picozzi
APD/MD: Mike Karolyi
Marlin 860-525-1069
List of 30 songs with radio stations and their respective positions.

WLZR Milwaukee
PD: Sean Elliott
MD: Marilynn Mee
Saga 414-978-9000
List of 30 songs with radio stations and their respective positions.

KUFO Portland
OM: Dave Numme
APD/MD: Dan Bozyk
Infinity 503-222-1011
List of 30 songs with radio stations and their respective positions.

WNOR Norfolk
PD: Harvey Kujme
APD/MD: Tim Parker
Saga 757-366-9900
List of 30 songs with radio stations and their respective positions.

WBZX Columbus
PD: Hal Fish
APD/MD: Ronni Hunter
North America 614-481-7800
List of 30 songs with radio stations and their respective positions.

WQXA Harrisburg
PD: Claudine DeLorenzo
MD: Nixon
Citadel 717-367-7700
List of 30 songs with radio stations and their respective positions.

WGIR Manchester
PD: Valorie Knight
MD: Jason Russell
Clear Channel 603-625-6915
List of 30 songs with radio stations and their respective positions.

KRQK Sacramento
SM: Jim Fox
PD: Pat Martin
Entercam 916-334-7777
List of 30 songs with radio stations and their respective positions.

ACTIVE ROCK

MAINSTREAM TOP 40

Table listing top 40 mainstream songs with station call letters and detection counts. Includes songs like 'Alicia Keys If I Ain't Got You' and 'Sugababes Hole In The Head'.

Table listing songs with station call letters and detection counts. Includes songs like 'Ashlee Simpson Pieces Of Me' and 'Kanye West Featuring Syle All Falls'.

Table listing songs with station call letters and detection counts. Includes songs like 'WYOC Mobile, Ala.' and 'WYOC Mobile, Ala.'.

Table listing songs with station call letters and detection counts. Includes songs like 'KELZ San Antonio' and 'KELZ San Antonio'.

Table listing songs with station call letters and detection counts. Includes songs like 'WTSS Buffalo, N.Y.' and 'WTSS Buffalo, N.Y.'.

Table listing songs with station call letters and detection counts. Includes songs like 'KRSK Portland, Ore.' and 'KRSK Portland, Ore.'.

Table listing songs with station call letters and detection counts. Includes songs like 'WOOD Grand Rapids' and 'WOOD Grand Rapids'.

Table listing songs with station call letters and detection counts. Includes songs like 'NO AIRPLAY ADDS THIS WEEK' and 'RHYTHMIC TOP 40'.

Table listing radio stations and their top songs, including WHZT Greenville, S.C., WWKL Harrisburg, Pa., and WKWB Honolulu.

Table listing radio stations and their top songs, including KSFM Sacramento, WJTT Chattanooga, and KPRS Kansas City.

Table listing radio stations and their top songs, including WWPR New York, WJKS Wilmington, Del., and WGNA Albany, N.Y.

Table listing radio stations and their top songs, including WQOW Norfolk, Va., WWHV Norfolk, Va., and KWSP Oklahoma City.

Table listing radio stations and their top songs, including WJHM Orlando, Fla., WPHI Philadelphia, and WUSL Philadelphia.

Table listing radio stations and their top songs, including WWIN Baltimore, WKQL Baton Rouge, La., and WBHK Birmingham, Ala.

Table listing radio stations and their top songs, including WQCC Chicago, WJZZ Jacksonville, Fla., and WYRK Buffalo, N.Y.

Table listing radio stations and their top songs, including WYWN Baton Rouge, La., WYOP Baton Rouge, La., and WYPR Baton Rouge, La.

Table listing radio stations and their top songs, including WYPR Baton Rouge, La., WYOP Baton Rouge, La., and WYPR Baton Rouge, La.

COUNTRY

Table listing country music stations and their top songs, including WGNA Albany, N.Y., KBOI Albuquerque, and WKHX Atlanta.

NO AIRPLAY ADDS THIS WEEK:

ADULT R&B

Table listing adult R&B stations and their top songs, including WWIN Baltimore, WKQL Baton Rouge, La., and WBHK Birmingham, Ala.

R&B/HIP-HOP

Table listing R&B/Hip-Hop stations and their top songs, including WAJZ Albany, N.Y., WJZZ Jacksonville, Fla., and WYRK Buffalo, N.Y.

AUDIO NETWORKS

Radio Disney VP/Pgm: Robin Jones APD/MD: Don Crabtree ABC Radio 972-991-9200

Table with 2 columns: Rank, Song/Artist. Top songs include Hilary Duff, Clean, Lindsay Lohan, Drama Queen.

Jones/US Country VP/MD: Penny Mitchell Jones Radio 303-784-8700

Table with 2 columns: Rank, Song/Artist. Top songs include Gretchen Wilson, Redneck Woman, David Lee Murphy.

Jones/Adult Hit Radio Sr. Dir. Pgm: Jon Holiday Jones Radio 303-784-8700

Table with 2 columns: Rank, Song/Artist. Top songs include Hoobastank, The Reason, 3 Doors Down.

XM/Top 20 on 20 XM 202-380-4000

Table with 2 columns: Rank, Song/Artist. Top songs include Hoobastank, The Reason, Usher, Burn.

XM/Highway 16 PD: Ray Knight XM 202-380-4000

Table with 2 columns: Rank, Song/Artist. Top songs include Emerson Drive, Last One Standing, Billy Keith, Whiskey Girl.

XM/Ethel Co-PD: Rick Lambert Co-PD: Scott Struber XM 202-380-4000

Table with 2 columns: Rank, Song/Artist. Top songs include The Cure, The End of the World, 3 Doors Down.

Sirius/The Beat Dir. Pgm: Geronimo PD: Howard Marcus Sirius 212-584-5100

Table with 2 columns: Rank, Song/Artist. Top songs include Roc Project, De Ja Vu, Beyonce, Naughty Girl.

Sirius/Hot Jamz PD: Geronimo Sirius 212-584-5100

Table with 2 columns: Rank, Song/Artist. Top songs include Young Gunz, Friday Night, Petey Pablo, Freek-A-Leek.

Sirius/ALT Nation PD: Rich McLaughlin Sirius 212-584-5100

Table with 2 columns: Rank, Song/Artist. Top songs include New Found Glory, All Downhill From Here, Yeah Yeah Yeahs.

Soft Rock Sr. Dir. Pgm: Damon Williams PD: Seth Neiman Music Choice 646-459-3300

Table with 2 columns: Rank, Song/Artist. Top songs include Wynonna, I Want to Know What Love Is, Train, Calling All Angels.

R&B/Hip-Hop Sr. Dir. Pgm: Damon Williams Music Choice 646-459-3300

Table with 2 columns: Rank, Song/Artist. Top songs include Cassidy, I'm Back, Beyonce, Naughty Girl.

Rock Sr. Dir. Pgm: Damon Williams PD: Adam Neiman Music Choice 646-459-3300

Table with 2 columns: Rank, Song/Artist. Top songs include Linkin Park, Lying From You, Last Prophets, Make A Move.

VIDEO CHANNELS

MTV Exec. VP/Music: Tom Calderone Sr. VP: Michele Dix VP/Music & Talent: Elli Cola Viacom 212-258-8000

Table with 2 columns: Rank, Song/Artist. Top songs include Usher, Burn, D12, My Band, OutKast, Roses.

VH1 Exec. VP/Talent & Music: Rick Krm Sr. VP: Michele Dix VP/Music & Talent: Bruce Gilmer Viacom 212-258-7800

Table with 2 columns: Rank, Song/Artist. Top songs include Lenny Kravitz, Where Are We Running, Beyonce Knowles, Naughty Girl.

BET VP/Music Prog: Stephen Hill MD: Kelly G Viacom 212-975-4055

Table with 2 columns: Rank, Song/Artist. Top songs include Twista, Overnight Celebrity, Kanye West Feat. Syle, All Falls Down.

CMT VP/Music & Talent: Chris Parr Viacom 615-335-8400

Table with 2 columns: Rank, Song/Artist. Top songs include Clay Walker, I Can't Sleep, Montgomery Gentry, If You Ever Stop Loving Me.

Great American Country PD: Jim Murphy MD: Jennifer Page Jones 303-792-3111

Table with 2 columns: Rank, Song/Artist. Top songs include John Michael Montgomery, Letters From Home, Kenny Chesney & Uncle, When The Sun Goes Down.

FUSE Dir. Pgm: Janis Unterweiser Rainbow-Media 212-324-3416

Table with 2 columns: Rank, Song/Artist. Top songs include Hoobastank, The Reason, Usher, Burn, D12, My Band.

MTV2 Exec. VP/Music: Tom Calderone Sr. VP: Michele Dix VP/Music & Talent: Elli Cola Viacom 212-258-8000

Table with 2 columns: Rank, Song/Artist. Top songs include Beastie Boys, Ch-Check It Out, Jay-Z, 99 Problems.

MuchMusic Canada Dir. Music Pgm: Sheila Sullivan CHUM Limited 416-591-5757

Table with 2 columns: Rank, Song/Artist. Top songs include Billy Talent, River Below, Hoobastank, The Reason.

CMT Canada Dir. Pgm: Casey Clarke MD: Dana Bourquin Corus 416-534-1191

Table with 2 columns: Rank, Song/Artist. Top songs include Jason McCoy, I Feel A Sin Comin' On, Aaron Pritchett, My Way.

Airplay Adds (AA) denotes songs with 6 or more detections at station for first time this week.

Editor-in-Chief: Scott McKenzie. VNU Business Publications Music & Literary Group. President: John Kilcullen. President & CEO: Michael Marchesano.



BY ANTHONY COLOMBO, WADE JESSEN, PATRICK MCGOWAN & MINAL PATEL

McGraw Debut Matches Year's Best

Tim McGraw has his highest debut in a year-and-a-half, as "Live Like You Were Dying" (Curb) debuts on the country chart at No. 36 with 765 detections in just four days of airplay.

"Dying" matches the highest entry on the chart this year set just one week ago by "Hey Good Lookin'" from Jimmy Buffett, Clint Black, Kenny Chesney, Alan Jackson and Toby Keith (RCA). McGraw's previous top 40 debut was "Red Rag Top," which came in at No. 34 in September 2002.

Elsewhere on the country chart, Brooks & Dunn earn their 33rd top 10 hit, as "That's What She Gets for Loving Me" (Arista Nashville) climbs 11-9. That puts the duo in third place among acts with the most top 10 tracks during the Nielsen Broadcast Data Systems era, which began Jan. 20, 1990. Leading the pack is George Strait with 43 top 10 tracks. Alan Jackson has 42.

EVERY 'ROSE' HAS ITS DAY . . . AND ANOTHER DAY

OutKast's "Roses" (Zomba) continues its amazing turnaround at rhythmic top 40, as it earns Airpower status and zooms 2-14 as the chart's Greatest Gainer (up 863 detections). It was only two months ago that the track lost its bullet and dipped 18-21. Four more weeks of declining detections followed, as "Roses" wilted its way to No. 30.

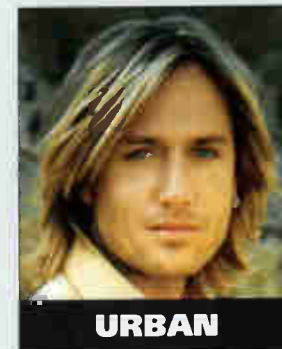
The slide began to reverse once the video for the track was serviced a month ago. "Roses" went to No. 1 on MTV's "Total Request Live," and positive research at radio soon followed, prompting "Roses" to bloom once more.

PLENTY OF COUNTRY ON AC CHART

One week after her album re-entered The Billboard 200 at No. 46 following an appearance on "The Oprah Winfrey Show," Wynonna earns Greatest Gainer and Most Airplay Adds at AC, as "I Want to Know What Love Is" (Curb) moves 23-14 in its 14th chart week.

Although "Love" was not worked to country radio and did not chart at the format, four other country artists notch successful runs on the AC chart. Making his first appearance at AC is Keith Urban, who debuts at No. 29 with his former No. 1 country smash, "You'll Think of Me" (Capitol). Martina McBride moves 4-3 with "This One's for the Girls" (RCA Nashville), matching the track's No. 3 peak at country last October.

Shania Twain has two tracks that have hit both charts. "Forever and for Always" (Mercury IDJMG) peaked at No. 4 on the country list in September before peaking at No. 1 on the AC chart earlier this year (it currently rests at No. 9). "It Only Hurts When I'm Breathing" topped out at No. 18 at country and dips 16-18 at AC this week.



URBAN

MR. KOTTER IS WELCOMED (BACK) TO R&B/HIP-HOP

Twista earns his second consecutive No. 1 on the R&B/hip-hop chart, as "Overnight Celebrity" (Atlantic) ends Usher's five-week run at the top with "Burn." Twista spent five weeks at No. 1 with "Slow Jamz" earlier this year.

Further down the R&B/hip-hop chart, Juvenile earns his first top 10 since "Tha Block Is Hot" peaked at No. 7 in January 2000. "Slow Motion" (UMRG), which features slain rapper Soulja Slim, climbs 12-10. It is the fourth top 10 for Juvenile and the first for Soulja Slim.

Elsewhere, Pastor Mason Betha, aka Mase, descends from his pulpit to return to the charts for the first time since 1999. "Welcome Back," which samples the theme to '70s TV show "Welcome Back Kotter," earns Greatest Gainer honors on the R&B/hip-hop and rap charts, where it debuts at No. 37 and No. 27, respectively.

'BITCH' IS BACK AT ACTIVE

Jet's "Cold Hard Bitch" (Atlantic) reclaims the No. 1 spot at active rock five weeks after ceding it to Linkin Park's "Lying From You" (Warner Bros.). That gap marks the longest time between stays at No. 1 for a song at active.

Aerosmith's "Baby, Please Don't Go" (Columbia) holds at No. 1 for a 10th week atop the heritage rock list. The track is the 14th song in the chart's history to spend at least 10 weeks at No. 1. It is also the second Aerosmith song to do so following "Jaded," which held the No. 1 spot for 14 weeks between January and April 2001.

PANEL CHANGES

WAKB Augusta, Ga., and WAGH Columbus, Ga., are added to the adult R&B panel. Coming off the modern rock panel is WEQX Albany, N.Y., while KEGL Dallas is removed from active rock.

FORMAT	NEW RELEASES WITH TOP 10 CALLOUT POTENTIAL	RECENTLY TESTED SONGS WITH TOP 10 CALLOUT POTENTIAL
MAINSTREAM TOP 40	<p>★ ASHLEE SIMPSON Pieces Of Me GEFLEN 70.9</p>	<p>1 TRAPT Echo WARNER BROS. 76.4 2 USHER Confessions Part II ZOMBA 74.9 3 BRITNEY SPEARS Everytime ZOMBA 70.4 4 STAINED Zoe Jane ATLANTIC 69.9 5 YELLOWCARD Ocean Avenue CAPITOL 69.7 6 SWITCHFOOT Meant To Live COLUMBIA 67.9 7 HANSON Penny And Me 3CG 67.3 8 311 Love Song ZOMBA 67.0</p>
RHYTHMIC TOP 40	<p>★ BRANDY Talk About Our Love ATLANTIC 70.6</p>	<p>1 ALICIA KEYS If I Ain't Got You RMG 82.8 2 JAY-Z 99 Problems IDJMG 77.8</p>
R&B/HIP-HOP	<p>NO NEW SONGS SHOWED TOP 10 CALLOUT POTENTIAL THIS WEEK</p>	<p>1 YUNG WUN Tear It Up RMG 97.8 2 JAY-Z 99 Problems IDJMG 87.4 3 OUTKAST Roses ZOMBA 84.4 4 ELEPHANT MAN Jook Gal (Wine Wine) ATLANTIC 75.7 5 ANGIE STONE I Wanna Thank Ya RMG 72.7 6 KANYE WEST Jesus Walks IDJMG 72.7 7 NINA SKY Move Ya Body UMRG 72.3 8 MURPHY LEE Hold Up UMRG 71.0</p>
ADULT TOP 40	<p>NO NEW SONGS SHOWED TOP 10 CALLOUT POTENTIAL THIS WEEK</p>	<p>1 BLINK-182 I Miss You GEFLEN 89.6 2 COUNTING CROWS Accidentally In Love GEFLEN 82.5 3 DIDO Don't Leave Home RMG 81.4 4 AVION Seven Days Without You CONSOLE 78.1 5 SARAH MCLACHLAN Stupid RMG 77.7 6 311 Love Song ZOMBA 76.2 7 STAINED Zoe Jane ATLANTIC 75.4 8 JESSICA SIMPSON Take My Breath Away COLUMBIA 74.6 9 PAT MCGEE BAND Beautiful Ways WARNER BROS. 73.7</p>
MODERN ROCK	<p>NO NEW SONGS SHOWED TOP 10 CALLOUT POTENTIAL THIS WEEK</p>	<p>1 SEETHER Broken WIND-UP 87.8 2 LINKIN PARK Breaking The Habit WARNER BROS. 81.5 3 CROSSFADE Cold COLUMBIA 76.6 4 SWITCHFOOT Dare You To Move COLUMBIA 75.6 5 SHINEDOWN 45 ATLANTIC 74.5 6 STORY OF THE YEAR Anthem Of Our Dying Day REPRISE 73.5 7 THE CURE The End Of The World GEFLEN 72.4 8 BLINK-182 Down GEFLEN 70.2</p>

Songs are blind tested online by Promosquad using multiple listens and a nationwide sample of carefully profiled music consumers. Songs are rated on a 1-5 scale; final results are based on weighted positives. Songs with a score of 65 or more are judged to have top 10 callout potential, although that benchmark number can fluctuate based on the strength of available music. New Releases are songs that have been recently serviced to or impacted at their respective formats; Recently Tested Songs are the songs tested during the past month with the highest score. For a complete list of current songs with Top 10 Callout Potential, see HitPredictor.com. © 2003. Promosquad is a trademark of Think Fast LLC.

Brandy

TALK ABOUT OUR LOVE
FEAT. KANYE WEST

#2 MTV TRL
MTV MAKING OF THE
MUSIC VIDEO AIRING NOW
BET 106TH & PARK

WKTU/NY
ADD!

THE PREMIERE SINGLE AND VIDEO FROM HER
HIGHLY ANTICIPATED NEW ALBUM AFRODISIAC
ALBUM IN STORES JUNE 29

Tracy Cloherty & Ebro, Todd Cavanah & Erik Bradley, Michael Martin and Jazzy Jim, Cadillac, Dennis & Tyler, Jay Stevens & Sarah O'Connor, Orlando & Beata, Cat Collins & Johnny Kage, Mark Adams & Alexa, Tom Calococci & Corina, Cagle & Maverick, Diana Laird, Byron Kennedy & Tony Tecate, Jay Are, Sam Elliot and Jesse Duran cannot ALL be wrong:
BRANDY is a BIG RECORD... period.

www.foreverbrandy.com
www.atlanticstreet.com © 2004 Atlantic Recording Corporation, A Warner Music Group Company.