

## This Week's Most Active

### ROCK

Three Dog Night - Show Must Go On  
Ray Stevens - The Streak  
Chicago - Searchin' So Long  
Jackson Five - Dancing Machine

### COUNTRY

Anne Murray - He Thinks I Care  
Loretta Lynn - Don't Make Them Like Daddy  
Waylon Jennings - This Time

### POP/MOR

Ray Stevens - The Streak  
Barbra Streisand - All In Love Is Fair  
Jim Croce - Have To Say I Love You  
Carpenters - Won't Last A Day

# R & R

## RADIO & RECORDS

THE MUSIC INDUSTRY NEWSPAPER

## TOP TWENTY

FRIDAY, APRIL 12, 1974

2	1	ELTON JOHN
1	2	BLUE SWEDE
3	3	MFSB
4	4	GRAND FUNK
4	5	JOHN DENVER
6	6	GLADYS KNIGHT
5	7	TERRY JACKS
15	8	THREE DOG NIGHT
11	9	JIM CROCE
13	10	REDBONE
9	11	RINGO STARR
16	12	MIKE OLDFIELD
7	13	CARLY & JAMES
-	14	JACKSON FIVE
18	15	CHICAGO
10	16	SISTER JANET MEAD
14	17	CHARLIE RICH
8	18	PAUL MC CARTNEY
22	19	BTO
12	20	CHER

VOLUME 2, NUMBER 14

FRIDAY MORNING, APRIL 12, 1974

## County Court Concludes KRUX-KUPD 'Compete Clause' Clash

The case of the disc jockey that left a station in the middle of his contract and went to work for the competition is over, at least part of it. A superior Court Judge-

Maricopa County in Phoenix, Arizona ruled that Randall Robert Johnson can continue to work at KUPD after leaving KRUX while still under contract.

There were some very interesting events surrounding the decision. The ruling mentioned that the "one year no-compete clause" which was specified to be in force for a full year after resignation or termination is still in effect after the first year of the contract. Since that year expires in September 1974, KRUX may then, if they wish, re-open the case and sue again. But, the judge ruled the man cannot be sued during the first year of the contract.

In a statement to the attorneys, the judge mentioned that his decision was made in pari because he felt that Johnson lacked uniqueness, and therefore KRUX really suffered no great loss. He felt all the jocks sounded the same.

The \$1 million law suit against Bob Milton, General Manager of KUPD has still not been settled. The only thing was the right of Johnson to work at this time.

### Commerce Committee OK'S FCC Nominee Holcomb

Luther Holcomb, President Nixon's nomination to the FCC, received unofficial endorsement from the Senate Commerce Committee despite attempts by the Rev. Carl McIntire to question his religious status.

## Ron Jacobs Wears Suit!



It had to be something pretty special for Ron Jacobs (right) to cast aside his levis and T-shirt over, and it is: he's receiving a gold record for KGB's "Home Grown" album which helped raise over \$37,000 for the United Way. At left is KGB Veep Mike Brown and United Way Chairman Alex DeBakcsy.



There's a reason why Pat O'Day (right) and Hal Widsten (page 3) both look so stunned: it's all a part of a unique promotion effort by London Records' Jerre Hall to call attention to Al Green's latest, "Let's Get Married." Their Seattle rock stations, KJR and KING, both received telegrams announcing the marriage of their PD to a young lady (left) who arrived the following Friday in a beautiful wedding gown bulging from eight months of pregnancy. Cakes, champagne, and a marriage license made out to the PD arrived with her.

### LATE NEWS:

## KDWB: "Z-63 Is Coming"

As reported here last week, KDWB-Minneapolis has begun their drive to regain the ratings lost to KSTP. New program director Buzz Bennett and assistant PD Steve Gaspar plan to "tighten up the total sound of the station." While they acknowledge the formidable task of overtaking KSTP, they "don't forsee any problems coming up in this book." New promo being aired is "Z-63 Is Coming." Air lineup now shapes up like this: 6 AM-10 AM,

Bob Shannon; 10-2 Bob Lang; 2-6 Don Bleu; 6-10, Jay Walker (from WZGC) 10 PM-2 AM, Scott Stevens; and 2 to 6 AM, Chris Roberts.

### Y-100 CHANGES

Sam Holman has resigned as VP and GM of Y-100 to return to his first love as a DJ. He returns to 13Q Pittsburgh to take back the morning show.

## Getting 'Family Unit' Key To Attracting Upper Age Groups—Bob Pittman, WPEZ

Bob Pittman, programming coordinator for WPEZ-Pittsburgh offers the following thought provokers on radio listening and the "family unit," and really

questioning the data you receive from your research.

By Bob Pittman, WPEZ

Getting a good age spread from 12 to 49 is definitely one of the biggest problems facing a programmer of a contemporary station. There are several factors that enter into attracting the upper age groups. The concept that I consider most important in this area is the listening patterns in given units. Quite a bit of my research has been on listening patterns in units such as peer units, geographic units, and family units. The family unit is the key to understanding adult programming for a contemporary station.

### THE FAMILY UNIT

The key type of family unit is one containing teenage children or subteen children that enjoy

listening to contemporary radio. In this type of unit, it's possible to control the listening pattern of the

(Continued on page 20)

## Rick Sklar: Short Playlist 'Boring And Monotonous'

R&R reached Rick Sklar, PD of WABC regarding the longer playlist this last week on WABC. Rick said, "I get as sick of the same records over and over again as the listeners. There just seemed to be a lot of good music available this past week. I was inspired." Rick also mentioned to R&R that he felt there was a preoccupation with a short playlist, and that the short list is boring and monotonous.



Bob Pittman

## Union Protests WHK Firings

As reported to R&R two weeks ago, WHK-Cleveland changed format from MOR to country. In doing the format change, they fired five disc jockeys and two newsmen. Cleveland AFTRA is protesting the firings. The Union says the disc jockeys should have been given the chance to phase into the new programming. The recent change to Country makes WHK the fourth Country formatted station in the area. Others are WNCN-FM, WELW, WSLR-Akron. The change came about after a "Magid" survey was commissioned by the station.

**"IF IT  
 FEELS GOOD  
 DO IT"  
 BY STORIES**

KA 588

#**1**

**ON WAKY RADIO**

**AND CLIMBING FAST ON:**

WKLO, WIXY, WAYS, WMAK, WMPS,  
 WBBQ, WKWK, WGRQ, WYSL, WERC, WSGN, WHHY, WLPL, WLAM,  
 WCOL, WNCI, WTAC, WILS, WVIC, WPOP, WCCC, WBGH,  
 WKGN, KUPD, KISN, KROY, KPAY



# RADIO

## Motor City Madness In CKLW-WDRQ LP Battle

A battle of the program minds and prize budgets happened in Detroit between CKLW and WDRQ. On Tuesday CKLW announced they were giving away the top 8 albums every hour. Wednesday morning Captain John Lodge, WDRQ's new PD came on with a promo giving away the top 10 albums four times each hour. Thursday CKLW returned the one upmanship by announcing "The Greatest LP Ripoff in Motor City History" giving away the top 8 albums 8 times per hour. Not to be outdone WDRQ countered with the top 10 albums ten times per hour. About this time CKLW's PD Bill Hennes decided to push all the way and see what would happen, so he loaded his top 8 album packages, being given away 8 times each hour with \$100 bills. End of battle.

three letters moved down the parade route with a jock on each letter taking pictures of the crowd. KJR then bought a full page ad in the local paper with the pictures, circling two faces. The man and women circled had only to call the paper and identify themselves and win \$250 each.

entire radiothon originated from the KCBQ studios. Local personalities manned the phones and \$21,038.16 was raised for the cause. Program Director Rich Robbins mentioned that Cheech and Chong offered \$200 to the campaign if someone would streak the station. The station got streaked and Cheech and Chong kept their promise with a \$1000 donation.

by Eddie Kendricks and Jim Stafford. Both rock stars pulled air shifts and talked to listeners. WPOP is also giving away "Boogie Shirts" stuffed with goodies ranging from cash to albums.

### DON'T SAY HELLO

XEROK-EL PASO running a "Don't Say Hello" contest with everyone saying the correct phrase winning a nice prize and qualifying for their "Sun City Streaker" which is a brightly painted VW.

### 99X EGG HUNT

99X-New York ran an easter egg hunt in Central Park. They topped off the hunt for plastic Easter eggs, filled with things like \$50 bills, with a free concert in the park starring Brownsville Station.

### WLOF BLASTS BACK

WLOF-Orlando on April Fools, with no warning to listeners, turned their station back to 1960, complete with old jingles, echo, screaming jocks, time tones, a "Funderful 40 Survey," and dedications. Response was tremendous. They also featured High School salutes, and "Blasts From the Past" dating back to 1957 gold.

### WGSB SOLD

WGSB-Savannah has been sold to Weis Broadcasting for slightly more than \$650,000. They are also planning an immediate move to new studios, with all new equipment.

### NEW JOCKS AT POP

WPOP-Hartford celebrated April Fools Day with their second annual "Superstar Day". Hosted at the station

### I AM GENEROUS

Helen Reddy and husband-manager Jeff Wald donated \$250,000 to the new Cedars-Sinai Medical Center, Los Angeles. The gift will endow the Helen and Jeff Wald Adult Outpatient Clinic.

### LEADER BACK ON AIR

WQXI Program Director Jon Leader decided to go back on the air in afternoon drive. He felt that he could not both be a top rated jock in a major market and also function as a PD, so Bill Sherard who is Director of Radio Programming for Jefferson Pilot has stepped in to handle the PD job at WQXI. Barry Chase, who was in the afternoon slot is no longer with the station.

### BROTHERS RETURN

Some Quickies: The Righteous Brothers are back together again and will be recording soon. Rumors have Lambert and Potter to produce them...

### SAN FRANCISCO

The FCC granted the application for assignment of KFOG-FM from Kaiser Broadcasting to General Electric Broadcasting Co. Price was \$1.6 million. The commission conditioned the grant on the outcome of antitrust proceedings involving the parent GE.

### WLS BRITISH ROCK

WLS-Chicago is running a British Rock Celebration weekend giving away double record sets of "The History of British Rock" on Sire Records.

### FRESNO

KYNO afternoon jock Mike Novak and wife gave birth to a 10 pound 9 oz. boy March 27. They sure grow them big in Fresno!

### JAN-FEB LA PULSE

(Mon.-Fri./Central/6AM-12 MID)

STATION	FORMAT	MEN	WOM	TEENS	TOTAL
KABC	T	6	8	-	6
KDAY	B	2	2	5	2
KGFJ	B	2	3	10	3
KMPC	MOR	6	4	-	4
KFI	MOR	4	3	-	3
KHJ	R	3	6	24	7
KKDJ	R	1	1	10	2
K100	R	2	2	7	2
KLOS	P	5	2	13	5
KMET	P	3	2	4	2
KLAC	C	6	5	-	5
KFOX	C	3	2	-	2
KISS	P/M	1	3	4	2
KRLA	R	2	1	2	2
KRTH	O	2	3	2	2
KFWB	N	8	5	-	6
KNX	N	6	5	-	5

FORMAT CODE: T: Talk, B: Black, P: Progressive, C: Country, O: Oldies P/M: Pop/MOR, N: News

### KFRC GETS INVOLVED

KFRC-San Francisco is one of the sponsors of the "Rides For Bay Area Commuters" which is a commuter computer service to match people up with rides, and save on gas.

### SEATTLE

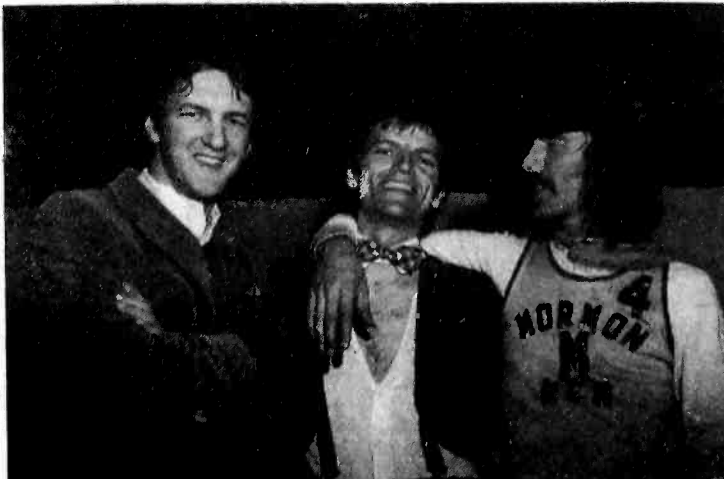
KJR-Seattle participated in the Tacoma annual Daffodil Festival by commissioning 30,000 daffodils to be put on 12 foot high moving letters spelling out "K J R" in flowers. The



KING PD Hal Widsten and his bride-for-a-day. Helped along by this amazing promotion, the Al Green record was added to the Seattle rock stations.



At left, the WQXI "Quackers" basketball team, undefeated in two years and responsible for thousands of dollars raised for local organizations. At right, Phillip Rauls of Stax greets



Larry Rasperry of "Larry Rasperry & The Highsteppers" after a recent concert. Don Nix (right) joins group on an upcoming tour.



**BOB WILSON**  
PUBLISHER  
**MARK SHIPPER**  
MANAGING EDITOR  
**DICK KRIZMAN**  
AD DIRECTOR  
**ANN VAN BEBBER**  
ASSOCIATE EDITOR  
**JONATHAN FRICKE**  
COUNTRY EDITOR  
**BIFF COLLIE**  
NASHVILLE EDITOR  
**MIKE KASABO**  
POP/MOR EDITOR  
**JASON SHRINSKY**  
FOC LEGAL COUNSEL  
**ANDY LAIRD**  
ENGINEERING ADVISOR  
**CINDY ZALLEN**  
SUBSCRIPTIONS  
**NANCY FRICKE**  
COUNTRY CHARTS

RADIO & RECORDS is published every Friday by Radio & Records, Inc., 6255 Sunset Blvd., Suite 719, Hollywood, CA 90028, 213-466-1605. Subscriptions \$130 per year or \$35 per quarter. No portion of this publication may be reprinted without the written permission of the publisher. Copyright 1974

# RECORDS

## NATIONAL PROMOTION FORUM

### DICK KLINE/ATLANTIC:

#### Lobo Hot In Midwest, Aretha Heads For Gold

The Lobo record, "Standing At The End Of The Line" has exploded in the Midwest in both sales and airplay. Out of the WEA Chicago branch it is now the number two selling pop single. A good spread on the Southern Radio stations is now starting.

Once again WIXY-Cleveland is one of the first major market radio stations to lead the way with the Maggie Bell single "After Midnight". Strong additions this week in secondary markets plus the tremendous album break-out in New England indicates Maggie Bell is going to be a star in 1974. More on Maggie, WEA-Boston branch has now sold 15 thousand albums in the last two and a half weeks.

Aretha Franklin, "I'm In Love" is now 400,000 sales and is certainly heading towards Gold very quickly. Pop airplay is building very rapidly.

New singles coming out: A fantastic instrumental by The Jimmy Castor Bunch, "Maggie Part One," a new Cross Country single, "rock 'n Roll Music," and a new release by Clint Holmes on Atco titled "Goodbye Maria".

Some of the new Atlantic albums on release this week include: King Crimson, Billy Cobham, Johnny Rivers, Dr. John, Buzzy Linhart and Roxy.

### LOUIS NEWMAN/BLUE THUMB

#### Pointers Programmed Across The Board

The Pointer Sisters are doing it again! Their current album, entitled That's A Plenty, is destined for the top of the charts.

Their single, "Steamheat," like the album, is being programmed

on radio stations whose formats include Country and Western, Top 40, Rhythm and Blues and M.O.R. Everyone digs The Pointers.

My rap would not be complete without asking you to go through your stack of singles and dig out a tune called "Scratch". You'll freak! It has got to be the strongest instrumental out and it's by The Crusaders. Get funky.

### AL COURY/CAPITOL:

#### Huge McCartney Adds, Grand Funk Monstrous

NEW: "BAM! ON THE RUN" Paul McCartney, title song from Number One album... Smash hit... WABC-New York, WPIX-New York, KJR-Seattle, KCBQ-San Diego, KJRB-Spokane, KGW-Portland, KIMN-Denver, KTLK-Denver, KCPX-Salt Lake, WHB-Kansas City, KQWB-Fargo, KOIL-Omaha, KLIF-Dallas,

KILT-Houston, 13Q-Pitts, K100-Los Angeles, WSAI-Cinn., KEEL-Shreveport, WCOL-Columbus, WAKY-Louisville, WIXY-Cleveland, WKQB-Butte, WMEX-Boston, WKBW-Albany, WFOM-Atlanta, WSGN-Birmingham, WMAK-Nashville... just some of the new adds.

"Locomotion" by Grand Funk will be number one along with their new album "Shinin On". Already number 1 at KKDJ-Los Angeles, KJR-Seattle, KQWB-Fargo, WCOL-Columbus, WSGN-Birmingham, WMAK-Nashville... GIANT! New Anne Murray "You Won't See Me" starting out strong KIMN-Denver, KCPX-Salt Lake, KJR-Seattle... from her new album.

"You, Me And Mexico" by Edward Bear over the past six months stations have asked for release... Reaction the first week excellent....



Dick Kline



Louis Newman

sales reaction to "Crying In My Sleep" by Jimmy Webb in Seattle-KJR, and Spokane-KJRB. "Reach Out For Me" by Casey Kelly is doing nicely at KGW, KISN, KRKO, KBZY, KGY, WAIL, KLBK, KWWL, WJON, WCCC, WKKE, WHLI, WBAB... Not a bunch of major stations are they? Hell, Thank the lord for the secondaries. Carly Simon's new single is shipping immediately: "I Haven't Got Time For The Pain"... It's undeniably fantastic. As a closing quote "Streakers Beware, your end is in sight."

### BUD O'SHEA/EPIC:

#### Rich, MFSB Go Gold, New Derringer, O'Jays

Charlie Rich now over 800,000 definitely will go gold, goes from 29 to 21 at WABC-New York, top ten at most stations.

MFSB went gold this past week, looks to be a number one record, selling better than 120,000 a week for the past five weeks.

Redbone now over 850,000. Many stations have dropped the record, only because they were on it early. In general it is still top ten in cities like New York, Los Angeles and still moving up in Chicago.

Billy Paul: good reorders on the west coast and in Memphis and Dallas. 26 at KFRC, 29 at WHBQ, added this past week to WNBC. The new Rick Derringer single "Teenage Love Affair" edited down from LP: strong initial reaction, added at KJR and KUPD. New O'Jays single "For The Love Of Money" very strong R&B play across the board, shipped over 275,000 the first week. Initial pop play: 18 CKLW, hitbound at KING-Seattle.

New Chase single from their LP is one we just shipped. LP play of the cut on KJOY, WHOT, KTAC. "Run Back To Mama" is the single. New albums coming that have a great deal of excitement around their release are the Poco, Argent and Hollies. Hollies LP contains the current single that is very strong in England and picking up good American MOR

and secondary rock action. The one super big LP that'll be released within the next three weeks is the new Edgar Winter album... It is finished and on its way.

### RON SAUL/WARNERS:

#### Graham Central Station Passes 100,000 Mark

Success stories on single product are important stories, particularly to radio stations during rating periods when stations ostensibly are looking for sure things.

If you want a success story on an R&B record that is going to be monstrous as a crossover... here is one for your... Graham Central Station... "Can You Handle It?". A record that has sold on the street, the short time it has been out, over 100,000, and taken unbelievable jumps around the country. No 33 to No. 10 at KYOK in Houston, No. 44 to No 29 at WDIA in Memphis, No 40 to No 12 at WWRL in New York, No. 34 to No. 15 at KDIA in San Francisco, No. 23 at WJLB in Detroit, No. 28 at KGFJ in Los Angeles. It has been on KJOY's chart in Stockton for six weeks and charting there at No. 3. Just added at KROY, the major pop station in Sacramento... It is a record!!!

Tower Of Power single "Time Will Tell" is also exploding R&B and Pop-wise. The Todd Rundgren single, "A Dream Goes On Forever" is selling well in the Cleveland market... 9,000 on the street.

The Doobie Bros., "Another Park, Another Sunday" added this week at WFIL in Philly, and KILT in Houston, which gives us ammunition on the record. Gordon Lightfoot, "Sundown": the single remains the hottest record in the northwest, Denver, Dayton, and just charted at WSAI at No. 28. It adds at WPGC in Washington D.C. and starting to sell in Detroit where it is No. 26 at CKLW there.

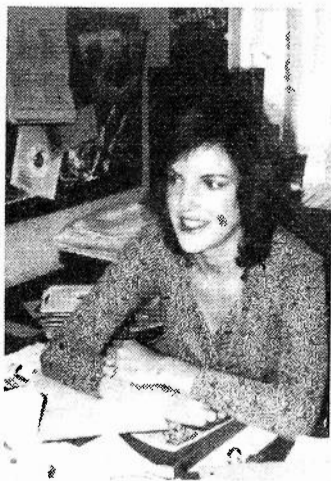
Wet Willie "Keep on Smilin'", and Gregg Allman "Don't Mess Up A Good Thing" are gaining momentum in the South. Cozy

## PERSONAL TOP TEN

Ever wonder what radio might sound like if the tastes of the audience didn't have to be considered? We're making a casual weekly survey of various music directors, PD's, GM's and other industry luminaries to find out which of the current product really appeals to them. It should be mentioned that these selections reflect only the choice of the person interviewed and in no way constitute an endorsement by Radio & Records or the individual stations.

This week we spoke with:

**CHRIS BLASE**  
MUSIC DIRECTOR  
KKDJ/LOS ANGELES



1. CHICAGO/Searchin' So Long (Columbia)
2. ELTON JOHN/Bennie & The Jets (MCA)
3. ELO/Daybreaker (UA)
4. O JAYS/For The Love Of Money (PI)
5. MAC DAVIS/One Hell Of A Woman (Columbia)
6. LOBO/Standing At The End Of The Line (Big Tree)
7. JIMMY BUFFETT/Come Monday (ABC)
8. BOBBY WOMACK/Lookin' For A Love (UA)
9. MARIA MULDAUR/Midnight At The Oasis (Reprise)
10. STYLISTICS/You Make Me Feel Brand New (Avco)

### JERRY SHARELL/ELEKTRA

#### Joni Tour A Smash, Montgomery Crosses

Joni Mitchell just completed the most successful concert tour of her career. Whoever didn't see her just cheated themselves. She's incredible!... and so is her album and single "Help Me". It is doing super at KLIF, KILT, KJR, KFJZ, WCOL, WDG, WDJW, WPGC, WRC, WMEX, WDRC, WFOM, WMAK, KJRB, and all national charts. With a number one album for Joni, top programmers should wake up and recognize a supreme talent. Many are still "watching it"... While they are "watching it" the LP and single are disappearing out of the record shops! Another clear example of nobody liking the Joni except the hundreds of thousands who buy her records and want to hear her on the radio!

"No Charge" by Melba Montgomery is a top 10 country smash and is crossing over at WAKY, in Louisville. I personally guarantee you radio guys this is a "Mother-Grabber"... If you know what I mean.

We are looking at very good

# RECORDS

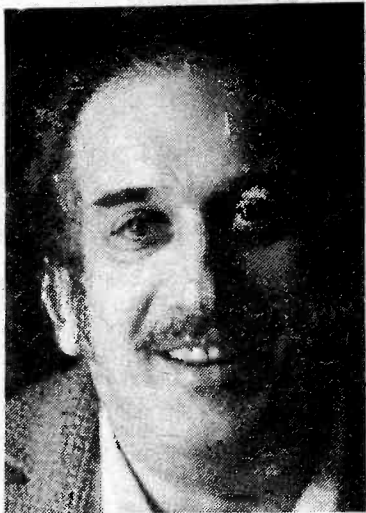
Powell: "Dance With The Devil" a super instrumental, taking tremendous jumps where played. KISS: "Nothin' To Lose" is starting in Nashville at WMAK, and WCOL in Columbus. Black Sabbath is exploding in Detroit, charting at CKLW. Heavily requested Minneapolis, northwest, and San Diego.

## MEL TUROFF/LONDON: Bloodstone Cross Begins, Northwest On Green

The most obvious record to talk about is the Bloodstone, which is top five R&B in most markets across the country. The crossover is starting, we've picked up KRUX-Phoenix, WIXY-Cleveland, KLO-Louisville where it's 14 on the chart, on CKLW it's gone Top 10. So we are definitely crossing in many of the pop markets. Gilbert O'Sullivan is top 50 in the trades and still moving up very strong each week. It's picking up.

The Al Green at this point is bulleted in all three trades. We're starting to pick up the crossing stations now. KJR, KING, the whole northwest is on it, and for them to go on an Al Green this early is pretty exciting. It's 27 at WIXY and moving. Z.Z. Top looks extremely good for us, we just picked up KERP. They added it because of top phone requests off the album. We have all of Houston, KILT and KNUS and all others in surrounding areas. We also have all rockers in Dallas.

Album wise we have good immediate action on the new Savoy Brown, which is a whole new band and getting good reception from KMET and all across the country.



Eddie Levine

## EDDIE LEVINE/UA:

### Womack Top Ten, ELO Single Flipped

Things are really popping at UA. The Womack record is Top Ten and Blue Note is soaring the charts with Bobbi Humphrey and Donald Byrd. The ELO single has been flipped to "Daybreaker." A hot, rocking instrumental that displays ELO's unique blend of rock and class music. Bubbling Under in Billboard, Shirley Bassey's new record "Davey" is getting good initial reaction. A natural for MOR already on WOKY-Milwaukee and being worked R&B (WWIN-WVKO).

Pride Records recording artist the New Sensations is breaking R&B in Baltimore, Washington, D.C., Detroit, New York and Los Angeles.

Currently on tour is Hawkwind, Man, and ELO.

## DON ANTI/PLAYBOY:

### Lois Fletcher Scores Label's First Hit

"I Am What I Am" by Lois Fletcher becomes Playboy Records' first National Hit... First broken by CKLW, now charted and playing WCFL, WOKY, WPIX, WIXY, WSAI, WGRQ, WAKY, WDG, KJR, WRFC, WSGN, and many many more... sales are great and spreading.

Just released and will become Playboy's next hit record "Just As Bad As You" by Shawne Jackson - produced by former James Gang member, Dominic Troiano... will go POP and R&B.

Into the country field with a bang comes Playboy "Room Full Of Roses" by Mickey Gilley, already top 5 in Houston at KENR, KIKK, KNUZ... immediately adds at WKDA, Nashville, WBAP, Ft. Worth, KBOX, Dallas, WPLO, Atlanta, KFDI, Wichita, KLAC, Los Angeles, WMC, Memphis, WUBE, Cincinnati, WINN, Louisville, WIRE, Indianapolis, KFOX, Long Beach and more... A Country Smash.

## BOB SHERWOOD/COL.:

### Chicago Hits Everywhere, Mott Has A Shot

First the good news and then the Bad...

GOOD NEWS: Chicago on 'pert near everywhere. Selling like a sun of a gun with great immediate chart reaction. Album certified gold in a hurry (as with every album they ever had) cut that is still causing alot of talk (and airplay) is "Wishing You Were Here" with the Beach Boy backup. Of the new things, something that will be welcomed by every programmer and loved by his listeners is "The Golden Age Of Rock & Roll" by Mott The Hoople (conveniently located within their new album "The Hoople"). With everyone moaning about all the down records and the lack of good old rock & roll boogie, this should be a well received tonic. As should a new offering from Johnny Winter a rather romping, stomping, kicking, biting version of Larry Williams classic "Bony Moroney." Some significant adds before we talked, before you went to press and long before anyone will read this... On Billy Joel's classic "Piano Man". The adds included WABC-New York, KXOK-St. Louis, and WPIX-New Orleans. (It might be noted that the version that caused immediate phone reaction and sales is the 4 1/2 minute version with the extra lyric lines and musical hooks... but then everyone in the world will probably be playing it by the end of this week).

Still going crazy over the reluctance on the part of some folks to play "Would You Lay With Me" by the lovely Tanya Tucker. Record went to number 2 at one of the nations best barameters, WAKY-Louisville (Thank you John) and it's now mid-teens at Killer KLIF-Dallas, it has long since past twice what a country record normally sells, therefore one would presume...

# CLASSIFIED OPENINGS

- KMEN-San Bernardino looking for a jock. Call Tom Tyler.
- WDLF-Panama City morning man with production, contact Rick Mauldin.
- KVOL-Lafayette AM drive jock needed. Contact Jim Trahan.
- WDRQ-Detroit looking for jocks, contact John Lodge
- WATH-Athens, Ohio looking for jocks contact Dave Palmer (614-593-6651)
- KYNO-Fresno looking for jocks, contact John Wallace, 2125 N. Barton-93703
- WROY-Roanoke looking for jocks contact Bart Prater (Box 4005-24015)
- KIMM-Rapid City looking for jock & production director contact Jim Shaw (605-348-1100)
- KRSP-Salt Lake looking for Jocks & Production contact Alan Hague (801-262-5541)
- WOW-Omaha looking for Production Director contact Steve Shannon.
- WWJO-FM-St. Cloud looking for Operations Manager contact Mike Diem (612-251-4422)
- KING-Seattle needs a morning man. Contact Hal Widsten 206-682-3555.
- WDRQ-Detroit looking for a jock contact John Lodge.
- WCOU-Lewiston needs Female Air Talent (C&W) contact Tom Starr 207-784-6921.
- KGRT-Las Cruces: Larry Edwards looking for air talent.
- WNAT-Natchez looking for Air Talent (C&W) contact Skip Campbell 601-442-4895.
- KSTT-Davenport looking for Air Talent with 1st Phone contact Steve McCloud 319-326-2541.
- KLWW-Cedar Rapids looking for Air Talent contact Steve Massie 319-363-8265
- WLTA-Atlanta looking for Air Talent contact Larry King 404-876-1038.
- WQTC-Two Rivers, looking for Air Talent contact Dennis Carpenter, Two Rivers, Wisc, Box 266 zip 54241.
- KOOK-Billings looking for Air Talent contact Brian Bennett Box 1276, Billings, Montana 59103.
- KWVB-Bismarck looking for Air Talent contact Allen Moos, Box 1377, Bismarck, North Dakota 58501
- KCRG-Cedar Rapids looking for Air Talent contact Wayne Johnson, Box 816 Cedar Rapids, Iowa 52406
- KBOX-Dallas needs morning man (Country) send tapes, resume, photo to Tom Allen, KBOX, 9900 McCree Rd., Dallas 75238.
- KDAY-Los Angeles looking for a black general market sounding jock; tapes, resume to Jim Maddox, 1700 N. Alvarado, Los Angeles, Calif.
- KKXL-Grand Forks, N. Dakota needs morning man. tapes, resume to Mark Renier, P.O. Box 997, 58201
- WEZY-Cocoa, Fla. needs Top 40 jock with 1st ticket, to do midnight-six; tape, resumes to Glen Hill, PD, P.O. BOX 2029, 32922, 305-636-4411.
- KEYN-Wichita Looking for a weekend jock contact Roger Mundy
- KLBK-Lubbock looking for 7-9am jock contact Don Richter.
- KEEL-Shreveport looking for afternoon drive and production contact Larry Ryan.

## NEWSMEN & WOMEN

- KRSP-Salt Lake looking for Newsman contact Bob Moon (801-262-5541)
- KYNO-Fresno looking for a newsman. Send tapes and resumes to John Wallace -KYNO-2125 No. Barton, Fresno, Calif. 93703.
- WGRQ-Buffalo looking for a newsman. Send tapes to J.J. Jordon.
- CHUM-Toronto looking for News-Sports Man contact Dick Smythe 1331 Younge St., M4T1Y1.
- KOOK-Billings looking for a Newsman, contact Brian Bennett, Box 1276, Billings, Montana 59103.
- WQTC-Two Rivers, Wisc, looking for a Newsman contact Dennis Carpenter, Box 266, Two Rivers, Wisc. 54241.
- WBIA-Augusta looking for a Newswoman contact Martin Farrell 404-724-2421
- KRSP-Salt Lake City needs a Newsman, and production man-Air Talent. Contact Allan Hague 801-262-5541.

## PRODUCTION

- WOW-Omaha looking for a production man, contact Steve Shannon.
- WKGN-Knoxville looking for a Production Director contact Bob Baron 615-573-2931.
- WROR-Boston needs a pdtn-oriented talent familiar with oldies. Contact Paul Kirby, WRKO-WROR, 617-742-9000

## POSITIONS SOUGHT

- Jim King, formerly with WWDJ, looking for a glg. 201-440-0695
- Ted Carson, midday man formerly with WCAR-Detroit, looking for MOR-Top 40 glg; 313-675-1382
- George Hart, formerly with WIXZ-Pittsburgh, looking. Call (before 6 pm, EST) 412-381-0899
- Jack Robinson, former PD, KAFM-FM Dallas, looking for PD or jock glg in major market; 214-369-3917.
- Rich Paladino, most recently West Coast Promotion, Elektra-Asylum, looking for glg. 213-849-5367
- Jeff Finch formerly with WDAI-Chicago looking contact 312-629-5456
- Jim Gibb formerly with EGGF-Coffeyville looking, 316-745-3351
- Dave Arlington formerly with WKIS-Orlando contact 305-851-3719
- Bill Murdock formerly with KPTL-Carson City looking 702-329-9261
- Gene Osborn formerly with WMAQ-Chicago Sports-News contact 505-265-8605
- Bob Witkin News Director formerly with WSAG-Miami looking 203-887-8520
- David Fransen Program Director and Jock looking formerly with KUDE-Oceanside contact 714-753-8329
- Skip St. John Program Director & Jock looking, contact 803-576-3313 formerly with WORD-Spartanburg.
- Steve Morgan Program Director & Jock looking, formerly with WINZ-Miami contact 305-279-6780

# CHANGES

- Dave Harmon back on WORD-Spartanburg all nights.
- Joe Johnson new afternoon drive at WORD.
- Gary Hart from KISD Sioux Falls to mornings at KLWW.
- Mike Metzger from WNCX new middays at WNCI-Cleveland.
- Robert John from WHYY to nights at WDRQ.
- Bob Raines from WSAR to WJAB-Portland PM drive.
- Paul Wonder new Operations Director at KUDE-Oceanside. David Fransen is out.
- John Mazer moves from WDEE-Detroit to WHN-NY.
- Jimmy Clark leaves WJR-Detroit which ends an era of live band radio shows.
- Perry Marshall leaves KQV to join KDKA.
- Larry Clark moves into 10 am to 3 pm at KQV.
- Rich Shaw joins KQV to do afternoon drive.
- Joe Finan new morning man at WHK-Cleveland.
- Dave Donahue joins WHK to do 10 am-2 pm from WITL, also program manager.
- John Chaffee upped to National PD for the Malrite Radio Chain.
- Huckleberry Chuck Clemmans to mornings KGB AM, Capt. Billy out.
- Jeff Davis new weekend man at WLS-Chicago. He's from WGH-Norfolk.
- WOWO-Ft. Wayne new PD is Chris Rathaus from KDKA.
- Jim Kerr moves from weekends WLS to mornings WPLJ-New York (ABC FM)
- Dave Daniels resigns as PD at 13Q Pittsburgh.
- Jackson Bojohn leaving 93Z-Atlanta to join KDWB.
- Jim Lloyd leaves KQV to become assistant PD at WIP-Philadelphia.
- WHJ resigned.
- Gary Burbank, WNOE, has resigned to take over the mornings at CKLW-Detroit.
- Mike Barnette leaves WSAU to join WGEZ in Beloit-Wisconsin.
- David Shane Arrowood has been promoted to Music Director at WSAU.
- Stu Collins from KING-Seattle to WIND-Chicago.
- Les Temple from KPAY-Chico to KFME-FM-Chico
- Mike Bell from KORV-Orville to KFME-FM-Chico.
- Ragday Ann from KCSC-Chico to KFME-FM-Chico
- Pete Stone from WKBR-Manchester to WGNG-Providence.
- Charlie Scott from WGNG-Providence to Y100-Miami.
- Mark Edwards from CKGM-Montreal to CFTR-Toronto
- Jack Allen from KASH-Eugene to KVI-Seattle
- Dick Fitzmaurice KIT-Yakima to KVEC-San Luis Obispo
- Chuck Anthony promoted to Production Manager at WRBD-Ft. Lauderdale.
- Jack Shaw promoted to Music Director at WORD-Spartanburg.
- Kevin Keogh from WLOB-Portland to WGUY-Bangor, Program Director.
- Glenn Richards promoted at WGST-Atlanta to Program Director

# ROCK

## Radio & Records April 12, 1974

3/22	3/29	4/5	
1	1	2	1 ELTON JOHN/Bennie & The Jets (MCA)
3	2	1	2 BLUE SWEDE/Hooked On A Feeling (EMI)
8	5	3	3 MFSB/T.S.O.P. (Phy/Int)
21	10	4	4 GRAND FUNK/Locomotion (Grand Funk)
4	4	4	5 JOHN DENVER/Sunshine On My Shoulder (RCA)
13	9	6	6 GLADYS KNIGHT/Best Thing (Buddah)
2	3	5	7 TERRY JACKS/Seasons In The Sun (Bell)
-	-	15	8 THREE DOG NIGHT/Show Must Go On (ABC)
-	-	11	9 JIM CROCE/Have To Say I Love You (ABC)
14	15	13	10 REDBONE/Come Get Your Love (Epic)
17	11	9	11 RINGO STARR/Oh My My (Apple)
22	20	16	12 MIKE OLDFIELD/Exorcist Theme (Virgin)
5	6	7	13 CARLY & JAMES/Mockingbird (Elektra)
-	-	-	14 JACKSON FIVE/Dancing Machine (Motown)
-	-	18	15 CHICAGO/Searchin' So Long (Columbia)
12	12	10	16 SISTER JANET MEAD/Lord's Prayer (A&M)
20	17	14	17 CHARLIE RICH/Very Special Love Song (Epic)
6	7	8	18 PAUL MC CARTNEY /Jet(Apple)
-	-	22	19 BTO/Let It Ride (Mercury)
7	8	12	20 CHER/Dark Lady (MCA)

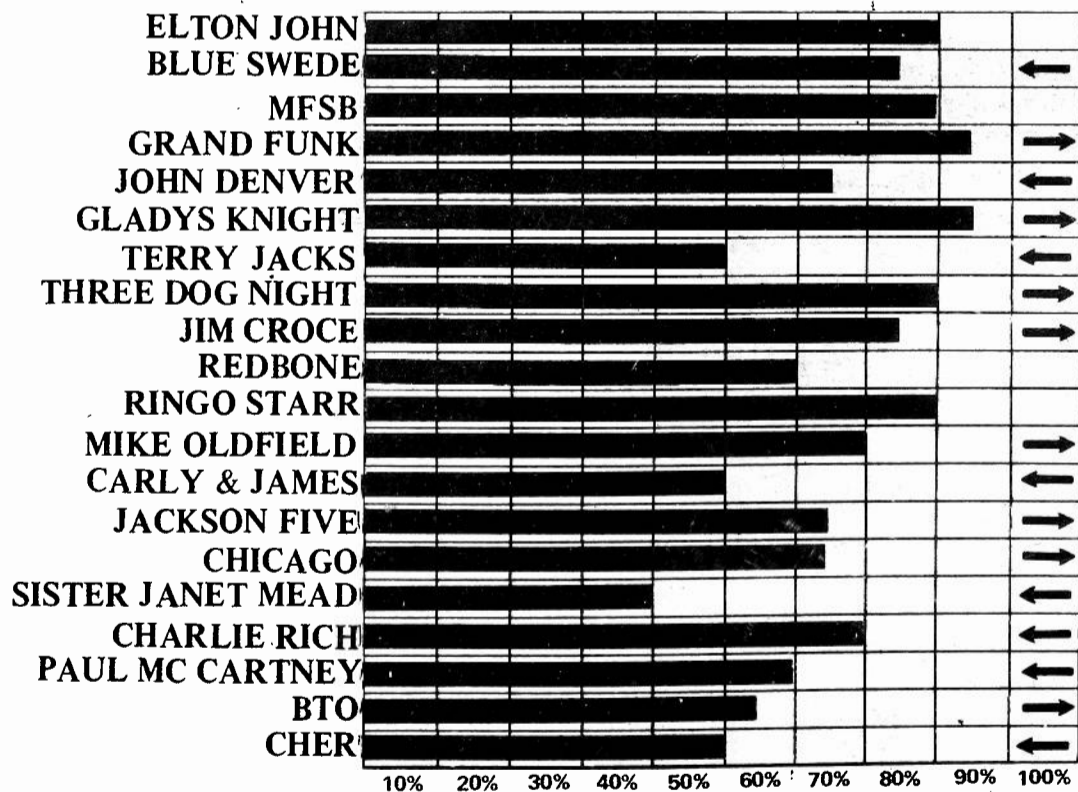
## NEW & ACTIVE

**TODD RUNDGREN** (Bearsville) debut 29 WMC-FM, add XEROK, 28-24 WIFE, 36-33 KEEL, add WAMS, 13-13 WZZM-FM, 27-27 KLIF, 28-25 WCOL, 40-37 KYSN  
**ARETHA FRANKLIN** (Atlantic) debut 30 WMC-FM, debut 39 KLIF, 38-26 KEEL, add WAMS, debut 40 WGH, on KGW  
**ANNE MURRAY** (Capitol) debut 32 KRSP, debut 28 KCPX, on KEEL, 31-25 KYSN, add WMAK, 21-27 WROK.  
**AL GREEN** (Hi) debut 40 KLIF, add KEEL, 34-33 KYSN, 38-28 WGH.  
**PAPER LACE** (Mercury) add WOKY, 24-12 WPGC, debut 39 KDZA  
**Z.Z. TOP** (London) add WQXI, 23-21 KRSP, 21-16 KJRB, 10-12 KILT, on KGW  
**RICK CUNHA** (GRC) debut 40 WCOL, add KEEL add WAKY, debut 29 WBBQ.  
**BLACK SABBATH** (WB) 30-28 CKLW, 27-25 WGRQ  
**GARFUNKEL** (Columbia) 36-33 WCOL, 36-35 KYSN.  
**OZARK MTN. DAREDEVILS** (A&M) 40-31 WCOL, debut 30 WBBQ, 29-27 KGW.

## Parallel Summary

**BTO:** did well again this week, debut 30 KHJ, 22-12 WPIX, 18-10 KQV, add KAFY, 19-12 WMYQ, 23-15 KAKC, debut 23 WAMS. See page 10.  
**CARPENTERS:** , for 3 weeks out, looks like a winner, add WPIX, debut 23 WQXI 25-18 Y100, debut 30 WIFE, debut 28 WFIL, debut 12 XEROK, debut 27 KYNO, debut 25 KAKC, 33-22 KJRB, 36-28 KDZA, debut 27 WMAK, debut 35 WPGC. See page 10.  
**CHICAGO:** picked up this week, debut 20 KQV, 29-17 KHJ, 19-7 WMAK, 22-16 KEEL, debut 23 KRUX. See page 10.  
**MAC DAVIS:** doing well wherever played, 29-22 KCPX, 30-20 WCOL, 38-33 KLIF.  
**LOIS FLETCHER:** picking up, add KCPX, add WPGC, 24-20 WCFL. See page 11.  
**MARVIN HAMLISCH:** moving up fast where programmed, with heavy debuts and add action, debut at 23 KKDJ, 28 KHJ, 29 WRKO, add WFIL K100, WPGC. See page 11.  
**ALBERT HAMMOND:** most positives with strong jumps, 12-9 WIFE, 15-9 KKXL, 30-26 WRKO, debut 21 WFLI, add WGRQ, debut 30 WHBQ, add KAKC, debut 27 WAMS. See page 11.  
**THE HOLLIES:** newcomer showing healthy adds on WAMS; KKXL, debut 40 KILT nice movement at KJRB from 39-33. See page 11.  
**JACKSON FIVE:** Sure bet for top 10, already charted at 3 WDRQ, 8 KSLQ, 4 99X, No. 1 at CKLW with heavy top 20 movement, 28-17 WPIX, 21-14 KQV, 29-20 K100, 30-19 KHJ, 19-11 KFRC, 20-15 WRKO, debut 19 WQXI. See page 11.  
**SAMI JO:** still shows excellent growth & spread every week with KYNO moving from 11-5, debut 28 KFXM, add KRSP, debut 25 WFLI, debut 28 WHBQ, debut 26 KAKC, debut 30 WAMS. See page 12.  
**OLIVIA NEWTON JOHN:** early action shows good movement at 21-18 WFLI, 23-15 WMAK, 35-23 WPGC, 33-24 WCOL, debut 22 WGOW. See page 12.  
**GORDON LIGHTFOOT:** strongest for him since "Could Read My Mind", 26-23 CKLW, 26-19 KIOA, 23-17 WBBQ, 29-21 WCOL, 22-12 KJRB. Many debuts, 28 WSAI, 24 WMAK, 33 WPGC, 38 KYSN, 30 WZZM-FM, 42 KDZA. See page 12.  
**LOBO:** picked up many new believers: added on WPGC, WAKY, KJRB, KEEL, debut at 38 WCOL. See page 12.  
**MAIN INGREDIENT:** Top 10 at 7-5 KFRC, 17-9 WPIX, 8-6 WCFL, debut 15 WLS. Edging near top ten at 22-15 KFXM, 19-15 WGRQ, 21-16 WMC-FM, 25-18 WHBQ, 23-17 WIFE, 26-19 WBBQ, 28-19 WAKY, 19-17 KEEL, 19-17 WCOL. See page 12.  
**PAUL MC CARTNEY** One of the most added this week, debut 21 WPEZ, debut 30 K100, debut 22 KQV, debut 30 KRSP, debut 26 KCPX, debut 30 KIMN, debut 30 WPOP, debut 39 WGH, debut 31 KJRB. See page 12.  
**JONI MITCHELL:** looks good this week, debut 30 WRKO, debut 30 KFXM, debut 18 WPOP, 25-19 KLIF, 31-23 WGH. See page 13.  
**MARIA MULDAUR:** excellent growth, 24-13 KFRC, debut 30 WFIL, debut 25 WGOW, add KYNO, debut 27 WMC-FM, 24-18 WMAK, 24-17 KYSN. See page 13.  
**O'JAYS:** good week, 18-11 CKLW, debut 28 KFRC, debut 11 WSRQ, add 99X, debut 29 WHBQ, add WAKY, 39-28 WCOL. See page 13.  
**COZY POWELL:** debut 30 WISM, 30-19 KYSN, debut 38 WGH, 28-20 WSAI, debut 25 KTKT. See page 14.  
**JIM STAFFORD:** had a very good week, debut 28 WIFE, add WGOW, add KCPX debut 28 WOKY, debut 27 WSAI, add WPGC, add WMAK, add KLIF, debut 32 KJRB. See page 14.  
**CAT STEVENS:** on K100, debut 28 WMC-FM, debut 32 WPGC, add WPOP, 24-19 WZZM-FM, add KLIF, 26-19 KKXL. See page 15.  
**RAY STEVENS:** airplay spreading. Also incredible jumps. See **STEVIE WONDER:** many adds this week at: WQXI, WGRQ, WAMS, WISM, WMAK, debut 28 K100, debut 26 KIMN, 32-27 WCOL.

## Comparative Audience Appeal



## CROSSOVERS

### BLACK TO ROCK:

**BOBBY WOMACK/** Lookin' For A Love (UA) 2:37  
**MAIN INGREDIENT/**Just Don't Want To Be Lonely (RCA)-3:31  
**BLOODSTONE/**Outside Woman (London) 3:55  
**AL GREEN/**Let's Get Married (Hi) 3:16  
**JAMES BROWN/**The Payback-Part 1 (Polydor) 3:30  
**EARTH, WIND & FIRE/**Mighty, Mighty (Columbia) 3:01  
**JAMES BROWN:** 16-10 WDRQ, 7-7 CKLW.  
**BILL WITHERS:** debut 18 WDRQ, 19-18 CKLW, add KEEL.  
**BLOODSTONE:** 30-27 KFXM, 14-15 WDRQ, 12-13 CKLW, debut 17 WGOW.  
**EARTH, WIND, & FIRE:** 28-24 KFXM, debut 35 WGH

### COUNTRY TO ROCK:

**TANYA TUCKER/**Lay With Me (Columbia)  
**MELBA MONTGOMERY/**No Charge (Elektra) 3:09  
**MELBA MONTGOMERY:** 23-20 WGOW, 20-14 WAKY.

### MOR TO ROCK:

**GILBERT O SULLIVAN/**Happiness Is Me And You (Mam)-3:06  
**MARIA MULDAUR/**Midnight At The Oasis (Reprise) 3:36  
**MARVIN HAMLISCH/**Music From "Sting" (MCA) 2:57  
**BARBRA STREISAND/**All In Love Is Fair (Columbia) 3:50  
**MAC DAVIS/**One Hell Of A Woman (Columbia) 2:52

parenthesis  
after dropped  
records indicate  
highest number  
achieved by  
record at station

# added this week...

**Most added**  
**CARPENTERS**  
**JIM STAFFORD**  
**MARVIN HAMLISCH**  
**PAUL MC CARTNEY**

## PARALLEL 1

**KKDJ/LOS ANGELES**  
Hamlisch  
Jackson Five  
Heywoods  
DROPS:  
Think (12)  
Aretha (3)  
Mocedades (1)

**WDRQ/DETROIT**  
Staples  
O Jays  
Bill Withers  
DROPS  
Streisand (top 5)  
Simon & Taylor (top 20)  
Main Ingredient (top 10)

**KSLQ/ST. LOUIS**  
No Adds  
DROPS  
None

**WFIL/PHILADELPHIA**  
Hamlisch  
McCartney  
Heywoods  
DROPS  
Moments (top 15)  
Cher (top 10)  
Streisand (top 5)  
Sami Jo (no chart)

**KQV/PITTSBURGH**  
Chicago  
Three Dog Night  
McCartney  
Billy Joel  
DROPS  
Cher (top 5)  
McCartney (top 5)  
Jacks (top 5)

**WQXI/ATLANTA**  
McCartney  
Stevie Wonder  
Hamlisch  
Z.Z. Top  
DROPS  
Mac Davis (top 20)  
Elvis (top 10)  
Reddy (top 10)

**WLS/CHICAGO**  
Main Ingredient  
Jim Croce  
DROPS  
Ringo (16) (2)  
De Franco (5)  
Love Unlimited (4)

**WPEZ/PITTSBURGH**  
Grand Funk  
McCartney  
DROPS  
Steve Miller (top 10)  
Streisand (top 10)

**WPIX/NEW YORK**  
McCartney  
Carpenters  
DROPS  
Essex

**WABC/NEW YORK**  
Oldfield  
DROPS  
David Essex (top 10)  
Diana & Marvin

**K100/LOS ANGELES**  
Hamlisch  
DROPS  
Staples (top 25)  
Sami Jo (top 30)  
Cher (top 5)  
Love Unlimited (2)

**99X/NEW YORK**  
O Jays  
DROPS  
Essex (top 10)  
Barbra (top 5)

**KFRC/SAN FRANCISCO**  
O Jays  
Ray Stevens  
DROPS  
Sister Janet (top 10)  
Kool (top 10)  
Simon & Taylor (top 10)

**WRKO/BOSTON**  
Marvin Hamlisch  
Joni Mitchell  
DROPS  
Love Unlimited (top 5)  
Harry Chapin (top 20)

**CKLW/DETROIT**  
Oldfield  
DROPS  
None

**KHJ/LOS ANGELES**  
Hamlisch  
Oldfield  
Bachman-Turner Overdrive  
DROPS  
Love Unlimited (top 5)  
Mocedades (top 10)

## PARALLEL 2

**KIOA/DES MOINES**  
Mac Davis  
Jimmy Buffett  
Razzy  
DROPS  
Kool (11)  
Simon & Taylor (4)  
MFSB (7)

**WMC-FM/MEMPHIS**  
Cat Stevens  
Five Man  
Todd Rundgren  
Leon Heywood  
Aretha  
DROPS  
Essex (1)  
Kendricks (3)  
Dozier (11)  
Derringer (4)

**KIMN/DENVER**  
Main Ingredient  
Heywoods  
DROPS  
Ringo Starr  
Elton John  
Albert Hammond

**KTKT/TUCSON**  
Jackson Five  
McCartney  
Carpenters  
Ray Stevens  
DROPS  
Redbone  
Carly & James  
Moments

**WSAI/CINCINNATI**  
Heywoods  
Jim Stafford  
Gordon Lightfoot  
Three Dog Night  
Ray Stevens  
DROPS  
Jet (top 10)  
Derringer (top 10)  
Sami Jo (14)  
Bobby Womack (20)  
Billy Joel (15)

**XEROK/EL PASO**  
McCartney  
Todd Rundgren  
Jim Stafford  
Maria Muldaur  
DROPS  
Kendricks  
Simon & Taylor  
Love Unlimited  
Starr (Oh My My)

**WFLI/CHATTANOOGA**  
Carpenters  
Sami Jo  
Albert Hammond  
DROPS  
Wednesday (1)  
Streisand (1)  
Diana Ross (13)  
Helen Reddy (23)

**KRSP/SALT LAKE**  
Ray Stevens  
Jim Stafford  
Sami Jo  
DROPS  
Charlie Rich (16)  
Carly & James  
Terry Jacks (1)  
Bobby Womack (27)

**WMYQ/MIAMI**  
Three Dog Night  
Chicago  
DROPS:  
Simon (top 10)  
Womack (top 20)  
Mocedades (top 20)

**WOKY/MILWAUKEE**  
Chicago  
Carpenters  
McCartney  
Paper Lace  
Shirley Bassey  
Maggie Bell  
DROPS  
Derringer (17)  
BTO (top 20)  
Think (top 20)  
Lois Fletcher

**KCBQ/SAN DIEGO**  
Sister Janet Mead  
DROPS  
Al Wilson (top 5) (Show)  
Ringo (top 5) (16)  
Aretha (top 20)

**WGRQ/BUFFALO**  
Stevie Wonder  
Albert Hammond  
McCartney  
DROPS  
Cliff De Young (top 10)  
Cher (top 5)  
Essex (top 10)  
Simon & Taylor (top 10)

**WIFE/INDIANAPOLIS**  
Jim Stafford  
Three Dog Night  
Carpenters  
DROPS  
Diana Ross (top 10)  
Kendricks (top 10)  
Stones (top 10)  
Charlie Rich

**KAFY/BAKERSFIELD**  
McCartney  
Jackson Five  
Stevie Wonder  
BTO  
Hamlisch  
DROPS  
Aretha (top 10)  
Stafford (1)  
David Essex (1)

**KYNO/FRESNO**  
Maria Muldaur  
Jim Stafford  
Mike Oldfield  
Hamlisch  
DROPS  
Paul McCartney (1)  
Jacks (1)

**WKBW/BUFFALO**  
Not Available  
DROPS  
Croce (25)

**KCPX/SALT LAKE**  
Hamlisch  
Lois Fletcher  
Jim Stafford  
Ray Stevens  
DROPS  
Z.Z. Top  
Emotions  
Charlie Rich (Epic)  
Staples  
McCartney (Jet)

**Y100/MIAMI**  
Womack  
Heywoods  
DROPS  
Mocedades (15)  
Streisand (1)  
Al Wilson (1)

**KFXM/SAN BERNARDINO**  
Albert Hammond  
Gilbert O Sullivan  
Stylistics  
Hamlisch  
Cozy Powell  
DROPS  
Stealers Wheel (14)  
Derringer (8)  
Stafford (5)

**WGOW/CHATTANOOGA**  
Jim Stafford  
Paul McCartney  
DROPS  
Elvis (6)  
Terry Jacks (1)  
Gladys Knight (10)  
Cher (11)

**KAKC/TULSA**  
Hammond  
DROPS  
Anne Murray  
Redbone  
Wednesday

**WHBQ/MEMPHIS**  
Stevie Wonder  
Sami Jo  
O Jays  
Hammond  
DROPS  
Think (top 15)  
Starr (Oh My My) (top 20)  
Rich (top 25)  
Reddy (top 25)

**WROK/ROCKFORD**  
Guess Who  
Hamlisch  
Maria Muldaur  
DROPS  
Cliff De Young (8)

## PARALLEL 3

**KJRB/SPOKANE**  
Rick Derringer  
Jimmy Gray Hall  
Anne Murray  
Lobo  
Tower of Power  
Nite: Boz Scaggs  
Ozark Mountain  
DROPS  
Emotions (26)  
Jimmy Webb (30)  
Kendricks (5)  
Streisand (37) "All in Love"  
Croce (24)  
James Gang (29)

**WCOL/COLUMBUS**  
Diana & Marvin  
Carpenters  
Lobo  
Jim Stafford  
Rick Cunha  
DROPS  
Not Available

**WCFL/CHICAGO**  
Ray Stevens  
Carpenters  
Stylistics  
Heywoods  
DROPS  
Moments  
Diana Ross  
Kendricks  
Cher

**KEEL/SHREVEPORT**  
Al Green  
Love Unlimited  
Bill Withers  
Lobo  
Rich Cunha  
DROPS  
Cher (1)  
Simon & Taylor (1)  
Jacks (1)  
Loggins & Messina (27)

**KDZA/PUEBLO**  
Heywoods  
Ray Stevens  
Gordon Lightfoot  
DROPS  
Eddie Kendricks (8)  
Rick Derringer (14)  
Cher (2)

**WAKY/LOUISVILLE**  
J. Frank Wilson  
Lobo  
O Jays  
Heywoods  
Jim Croce  
Rob Hagel  
Rick Cunha  
DROPS  
Kendricks  
Soul Children

**KYSN/COLORADO SPRINGS**  
Lightfoot  
Five Man  
Ray Stevens  
DROPS  
McCartney (Jet)

**WPGC/WASH. D.C.**  
Gilbert O Sullivan  
Lois Fletcher  
Jim Stafford  
Lobo  
Marvin Hamlisch  
DROPS  
Bachman-Turner Overdrive (15)  
Stealers Wheel (16)

**WMAK/NASHVILLE**  
Anne Murray  
Jim Stafford  
Stevie Wonder  
DROPS  
None

**KRUX/PHOENIX**  
Stylistics  
Joni Mitchell  
Marvin Hamlisch  
Cat Stevens  
DROPS  
Rich (RCA) (16)  
Elvis  
Love Unlimited Orchestra

**KLIF/DALLAS**  
Cat Stevens  
Jim Stafford  
Aretha  
Al Green  
Nite:  
Hancock  
DROPS  
Denver (3)  
White (15)  
Lamont Dozier (22)  
11th Hour (34)

**WZZM-FM/GRAND RAPIDS**  
Gordon Lightfoot  
Harry Nilsson  
DROPS  
Cliff De Young (10)

**WBQ/AUGUSTA**  
Not Available  
DROPS  
Stories  
Gregg Allman  
Bachman-Turner Overdrive  
Redbone  
McCartney (Jet) (1)  
Ringo (Oh My My) (1)

**WPOP/HARTFORD**  
Cat Stevens  
Ray Stevens  
Jackson Five  
Bobby Womack  
Electric Light Orchestra  
DROPS  
Aretha (9)  
McCartney (Jet) (9)  
Amesbury (11)  
Barbra (2)

**WISM/MADISON**  
Cat Stevens  
Stevie Wonder  
Five Man  
Ray Stevens  
DROPS  
Eddie Kendricks (5)  
Wednesday (14)  
Cher (2)

**KJR/SEATTLE**  
Al Wilson  
Lobo  
Emotions  
Diana & Marvin  
O Jays  
Todd Rundgren  
Leon Russell  
DROPS  
Sister Janet  
Maria Muldaur  
Elvis  
Jimmy Webb  
Z.Z. Top  
Gilbert O Sullivan  
Bobby Womack  
Joni Mitchell

**KILT/HOUSTON**  
Main Ingredient  
Paul McCartney  
DROPS  
Not Available

**WAMS/WILMINGTON**  
Stevie Wonder  
Maria Muldaur  
Aretha  
Todd Rundgren  
Carpenters  
DROPS  
Kool & the Gang (1)  
Amesbury (12)  
Mocedades (16)  
Moments (20)  
Steve Miller (26)

**WGH/NEWPORT NEWS**  
Guess Who  
Carpenters  
Cozy Powell  
McCartney  
Aretha  
DROPS  
Kendricks (top 10)  
Derringer (top 15)  
David Essex (top 10)  
McCartney (Jet) (top 15)  
Kool (top 10)

**KKXL/GRAND FORKS**  
Jim Stafford  
Hollies  
Barbra Streisand  
The Heywoods  
Nilsson  
DROPS  
Eugene Wallace (36)  
Denver (1)  
Oldfield (5)  
Five Man (18)  
Blue Swede (3)  
BTO (8)

# FM ROCK RADIO

by Mike Harrison

(Continued from last week)

Continuing on the premise that radio stations are responsible to serve the sponsors as well as the listeners, (if you disagree, please write and let me know), we come to that FM oriented phenomenon known as the commercial cluster. In order to have the time to segue records and create sets, commercials are segued in sets too.

What effect does a position in such a series have upon the potency of any individual commercial, and how can a knowledge of this help a programmer? Next week we'll explore this by talking to radio people as well as advertising people.

In the meantime, try an experiment. Produce two four-minute demo tapes. They should consist of the last minute of a familiar record, DJ outro, DJ name, time, and station call letters; two 60-second agency spots back to back, DJ intro and the first minute of a familiar record. Both tapes should be exactly the same, except for the order of the commercials. Then take a group of five people and without telling them what you're up to, ask them to listen to the first tape. After its over, wait three minutes and then have them write down (in the order that it comes to them) everything that they remember about the tape. Mark that group one. Then gather another group of five people and repeat the process, only this time using the second tape. Compare group one and group two.

Let me know how you make out.

A listener calls the radio station. The troubled voice of a male approximately 20 years old asks, "Can you clear up a problem for me? I bought a pair of tickets to the Jefferson Starship concert at the Civic Theatre for April 16th and I want to know if they're fake or anything."

"What makes you think they're fake?"

"I haven't heard anything about the concert at all, no advertisements."

"How did you know about the concert, then?"

"I saw it listed on the Civic Theatres' calendar of upcoming events."

"Well, don't worry, your tickets are very real. The radio ads for the concert start running tomorrow."

"Whew! Thank, I couldn't believe that I could be the only one in town who knew about it."

This conversation actually took place just a few days ago. It is a perfect example of how a consumer can doubt the credibility of a product because it is not advertised. Taken one step further, it indicates how the listener can doubt the credibility of a radio station for not advertising a significant contemporary product such as a big concert.

What we've got here is the super hip commercial that walks a thin line between being an advertisement and news. These include spots for concerts, records, movies, and most other forms of entertainment and amusement. To draw a parallel, you'll find in newspapers the ads for movies in big print that the theatres pay for on one page, and on another page, in not so big print, the directory and schedules of every movie in town that the paper prints for free. How about during the worst days of the gas shortage, those radio stations that were broadcasting the names and locations of gas stations that were pumping gas. Those were in reality free commercial messages that the stations chose to broadcast because they would actually boost ratings. Who

# ROCK ALBUMS

New entries are boxed. \*Denotes most played cuts

<b>BACHMAN-TURNER OVERDRIVE</b> Bachman-Turner Overdrive II (Mercury) <i>CUTS: Let It Ride*, Blown, Takin' Care of Business</i>	<b>FOGHAT</b> Energized (Bearsville) <i>CUTS: That'll Be The Day*, Step Outside</i>	<b>LOU REED</b> Rock & Roll Animal (RCA) <i>CUTS: Sweet Jane*, Rock &amp; Roll, White Light/White Heat</i>
<b>JIMMY BUFFETT</b> Living and Dying in 1/4 Time (Dunhill) <i>CUTS: Saxophones, Come Monday, Ballad Of Spider John</i>	<b>GRAND FUNK</b> Shinin' On (Grand Funk) <i>CUTS: Locomotion*, Shinin' On</i>	<b>TODD RUNDGREN</b> Todd (WB) <i>CUTS: A Dream Goes On Forever*, Sons of 1984, Heavy Metal Kids, The Last Ride</i>
<b>CAT STEVENS</b> Buddha And The Chocolate Box (A&M) <i>CUTS: Music, A Bad Penny, Ghost Town, Home In The Sky, Ready</i>	<b>HUMBLE PIE</b> Thunderbox (A&M) <i>CUTS: 99lbs*, Every Single Day, Don't Worry-Be Happy</i>	<b>BOZ SCAGGS</b> Slow Dancer (Columbia) <i>CUTS: You Make It So Hard*, Slow Dancer, Pain of Love</i>
<b>HARRY CHAPIN</b> Short Stories (Elektra) <i>CUTS: Wild*-They Call Her Easy</i>	<b>BILLY JOEL</b> Piano Man (Columbia) <i>CUTS: Worse Comes To Worse, Piano Man*, Travellin' Prayer, Captain Jack</i>	<b>SEALS &amp; CROFTS</b> Unborn Child (W.B.) <i>CUTS: Unborn Child, Windflowers</i>
<b>CHICAGO</b> Chicago "7" (Columbia) <i>CUTS: Searchin' So Long, Wishing You Were Here, Skinny Boy</i>	<b>KISS</b> Kiss (Casablanca) <i>CUTS: Nothin' To Lose*, Cold Gin</i>	<b>PAUL SIMON</b> Live Rhymin' (Columbia) <i>CUTS: Mother and Child Reunion, Bridge Over Troubled Water, The Sounds Of Silence</i>
<b>COMMANDER CODY</b> Planet Airmen (Paramount) <i>CUTS: Digg Digg Lo, Riot In Cell Block No. 9</i>	<b>GORDON LIGHTFOOT</b> Sundown (WB) <i>CUTS: High &amp; Dry, Sundown*, Seven Island Suite</i>	<b>GRACE SLICK</b> Manhole (Grunt) <i>CUTS: Better Lying Down, Manhole</i>
<b>DEEP PURPLE</b> Burn (W.B.) <i>CUTS: Mistreated, What's Goin' On Here, Might Just Take Your Life*</i>	<b>LOGGINS &amp; MESSINA</b> Full Sail (Columbia) <i>CUTS: A Love Song*, Watching The River Run, Sailin' The Wind, Didn't I Know You When</i>	<b>CARLY SIMON</b> Hotcakes (Elektra) <i>CUTS: Mockingbird*, Safe &amp; Sound, Think I'm Gonna Have A Baby, Haven't Got Time For The Pain*, Mind On My Man</i>
<b>THE DOOBIE BROTHERS</b> What Were Once Vices... (WB) <i>CUTS: Pursuit On 53rd Street*, Daughters of the Sea, Eyes of Silver, Road Angel</i>	<b>MARSHALL TUCKER BAND</b> A New Life (Capricorn) <i>CUTS: Southern Woman*, A New Life, Another Cruel Love</i>	<b>STEELY DAN</b> Pretzel Logic <i>CUTS: Rikki Don't Lose That Number*, East St. Louis Toodle-oo, Night By Night</i>
<b>BOB DYLAN</b> Planet Waves (Asylum) <i>CUTS: On A Night Like This*, Gonna, Gonna, Gone, Tough Mama*, Something There Is About You, Forever Young*, Pt 1&amp;2, You Angel You, Never Say Goodbye*</i>	<b>JONI MITCHELL</b> Court And Spark (Asylum) <i>CUTS: Court and Spark, Help Me*, Free Man In Paris*, People's Party, Same Situation, Car On A Hill*, Raised On Robbery*</i>	<b>TOWER OF POWER</b> Back To Oakland (WB) <i>CUTS: Time Will Tell, I Got The Chop</i>
<b>EMERSON LAKE &amp; PALMER</b> Brain Salad Surgery (Manticore) <i>CUTS: Still You Turn Me On*-Karn Evil 9-Part 2 &amp; 3</i>	<b>GRAHAM NASH</b> Wild Tales (Atlantic) <i>CUTS: Grave Concern, Prison Song*, Wild Tales</i>	<b>JOHNNY WINTER</b> Saints & Sinners (Columbia) <i>CUTS: Stone County, Stray Cat Blues, Boney Moroney, Blinded By Love*</i>
<b>DAVID ESSEX</b> Rock On (Columbia) <i>CUTS: Rock On*-For Family-LampLight</i>	<b>NAZARETH</b> Loud and Proud (A&M) <i>CUTS: This Flight Tonight, Freewheeler</i>	<b>YES</b> Tales From Topographic Oceans (Atlantic) <i>CUTS: Side One Edits 2 &amp; 5, Side Three Edit 4, Side Four Edit 2, Side Two Edit 5</i>

would believe a year ago that the time would come when gas station commercials would get you more listeners? It boils down to contemporary significance and the

supply of and demand for information. In Southern California, there is no doubt in my mind that it was advantageous to FM rockers, not only monetarily, but ratings wise, to have

run spots for the California Jam. The influx of telephone calls concerning this event far exceeded those for any hit record.

Some commercials actually bring a radio station prestige. For example, the much celebrated forthcoming American Songwriting Festival. In

(Continued on page 16)

## Progressive Top Play Singles

- DAVID BOWIE/Rebel Rebel (RCA)
- CHICAGO/(I've Been) Searchin' So Long (Columbia)-4:19
- CRUSADERS/Scratch (Blue Thumb)-2:30
- JOHN DENVER/Sunshine On My Shoulder (RCA)-3:18
- DR. JOHN/Rite Away (Avco)-2:44
- GRAND FUNK/Locomotion (Grand Funk)-2:45
- HENRY GROSS/Simone (A&M)-3:25
- LOGGINS & MESSINA/Watching The River Run (Columbia)-3:25
- STEVE MILLER BAND/Your Cash Ain't Nothin' But Trash (Capitol)
- MFSB/TSOP (Phy/Int)-3:29
- MIKE OLDFIELD/Theme From Exorcist (Virgin)-3:18
- PINK FLOYD/Us And Them (Harvest)-3:15
- COZY POWELL/Dance With The Devil (Chrysalis)-3:32
- TODD RUNDGREN/A Dream Goes On Forever (Bearsville)-2:21
- LEON RUSSELL/If I Were A Carpenter (Shelter)-2:38
- TOWER OF POWER/Time Will Tell (WB)-3:07
- SANTANA/When I Look Into Your Eyes (Columbia)-2:40
- CAT STEVENS/Oh Very Young (A&M)-2:33
- BLACK SABBATH/Iron Man (WB)-3:33
- DAVID T. WALKER/I Got Work To Do (Ode)-4:12
- JOHNNY WINTER/Stone Country (Columbia)-3:31

## ALBUM NOTES

BY BOB WILSON

The most significant action this week has been to the AL STEWART (Janus) and the ROBIN TROWER (Chrysalis). Most are programming the entire LP's, although the cut "Roads To Moscow" seems to be standing out on the Al Stewart.

Excellent immediate airplay on two new Columbia releases: MOTT THE HOOPLE and BLUE OYSTER CULT. On the new JESSE COLIN YOUNG, the "California Suite" is bringing good response. PROCOL HARUM (Chrysalis) is getting airplay everywhere, as you might expect. Most are playing entire album.

Top play cuts on the new MICHAEL MURPHY so far are "Healing Springs," "Holy Roller," and "Nobody's Gonna Tell Me How To Play My Music." (Epic).

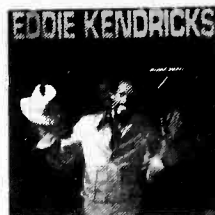


# Pure



That's Smokey Robinson's second solo album. Also provocative, unique, and dynamite. T6-331S1.

# Boogie



The only way to *Keep on Truckin'* is to *Boogie Down*. Just ask Eddie Kendricks. T 330V1.

# Foxy



Willie Hutch scores again. On the right track with *Foxy Brown*. (Remember *The Mack!*) M6-811S1.

# COUNTRY FRESH



Diahann Carroll debuts on Motown. Listen to that country feeling. Produced by Joe Porter. M6-805S1.

# CELEBRATION



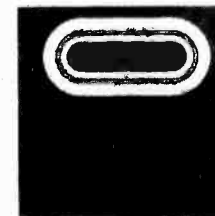
The most magnificent assemblage of black artists ever brought together. That's *Save The Children*. The album that's a celebration of life. M-800R2

# Mmm Mmm Good!



That's what Michael Edward Campbell's debut Motown album is. Open it up and see for yourself. M6-810S1

# Marvin's Music



The Marvin Gaye Anthology Album. Three records of the man and the music that's Marvin Gaye. A collector's must. M-791A3

# It's a hot April at Motown.



# PARALLELS

**BILL AMESBURY**  
(Casablanca) 2:30

*Virginia*

P1	
P2	19-17 KCPX
P3	7-7 WISM, 12-11 WCFL, 33-29 WGH, 11-10 KKXL

NOTES: Moving up where played.

**BACHMAN-TURNER OVERDRIVE**  
(Mercury) 4:21

*Let It Ride*

P1	20-15 WPIX, 22-12 WPXI, 18-10 KQV, on KDWB, 21-10 WDRQ, on WFIL, 25-25 K100, debut 30 KHJ, 27-22 KFRC, 26-22 WRKO, 14-14 CKLW
P2	14-11 Y100, 10-9 WGOW, 18-16 KCPX, 21-18 WGRQ, 6-6 WIFE, add KAFY, 11-5 KTKT, 18-12 KIMN, 19-12 WMYQ, 19-19 KRSP, 20-22 KIOA, 17-15 WFLI, 9-8 WSAI, 19-16 KYNO, on WAXY, 23-15 KAKC, 20-14 WROK
P3	Debut 23 WAMS, 37-31 KILT, 3-5 WZZM-FM, 28-23 WMAK, 15-14 WPGC, 17-15 KYSN, 17-14 WISM, 21-25 WCFL, 5-12 WCOL, 20-20 KLIF, 7-6 KRUX, 28-28 WPOP, 13-14 KJRB, 25-23 KDZA, 25-16 WGH, 8-5 KGW.

NOTES: Good week, average 5 point jumps.

**BLUE SWEDE**  
(EMI) 2:54

*Hooked On A Feeling*

P1	3-3 WPIX, 3-2 WPEZ, 1-2 WLS, 2-3 WQXI, on KDWB, 2-4 KQV, 5-6 KKDJ, 11-12 WDRQ, 2-1 KCLQ, 5-5 WFIL, 2-2 K100, 2-2 KHJ, 4-3 99X, 6-5 KFRC, 2-4 WRKO, 16-16 CKLW
P2	1-2 WKBW, 2-4 KFXM, 2-3 Y100, 8-13 WGOW, 7-20 KCPX, 3-2 WGRQ, 19-21 WIFE, 7-8 KAFY, 1-1 WOKY, 2-4 WOKY, 2-3 KTKT, 3-6 KIMN, 4-5 WMYQ, 14-23 KRSP, 3-5 WROK, 2-2 WMC-FM, 2-1 KIOA, 2-3 WFLI, 2-7 XEROK, 1-5 WSAI, 1-4 KYNO, 4-4 WHBQ, on WAXY,
P3	6-5 WAMS, 4-3 KILT, 2-3 WZZM-FM, 3-5 WMAK, 1-7 WPGC, 3-4 KYSN, 11-15 WAKY, 1-2 WISM, 1-1 WCFL, 8-16 WCOL, 2-2 KLIF, 1-2 KRUX, 5-12 WPOP, 1-2 KEEL, 1-1 KJRB, 1-2 KDZA, 2-2 WGH, 1-1 KGW

NOTES: Most report peak-still top 10 sales & request.

**CARPENTERS**  
(A&M) 3:47

*I Won't Last A Day Without You*

P1	Add WPIX, debut 23 WQXI, 22-17 KKDJ, 25-24 KSLQ, 28-24 WFIL, 22-18 K100, 23-20 KHJ, 29-26 KFRC, 29-27 WRKO
P2	25-18 Y100, 28-23 KCPX, debut 30 WIFE, 25-23 KAFY, add WOKY, 19-17 KCBQ, add KTKT, 28-27 KIMN, 26-25 KRSP, debut 28 WFLI, debut 12 XEROK, 29-22 WSAI, debut 27 KYNO, 26-24 WHBQ, debut 25 KAKC
P3	Add WAMS, on KILT, 26-23 WZZM-FM, Debut 27 WMAK, Debut 35 WPGC, debut 23 KGW, 20-10 KYSN, debut 29 WAKY, debut 35 WCFL, debut 37 WCOL, 37-32 KLIF, 27-26 WPOP, 30-20 WBBQ, 30-26 KEEL, 33-22 KJRB, 36-28 KDZA, 40-36 WGH, 39-24 KKXL,

NOTES: looks solid.

**CHICAGO**  
(Columbia) 4:19

*(I've Been) Searchin' So Long*

P1	On WPIX, 7-6 WQXI, debut 20 KQV, on KDWB, 25-20 KKDJ, 19-14 WDRQ, 24-23 KSLQ, 7-4 WFIL, 26-21 K100, 29-17 KHJ, 25-24 KFRC, 18-13 WRKO, 28-26 CKLW
P2	on WAXY, 25-16 KAKC, 24-17 WROK, 18-13 WSAI, 18-9 KYNO, 27-23 WHBQ, 13-13 WKBW, debut 26 KFXM, 21-10 WGOW, 24-19 KCPX, 25-21 WGRQ, 8-7 WIFE, debut 24 KAFY, add WOKY, 22-18 KTKT, 7-5 KIMN, debut 16 WMYQ, 12-11 KRSP, 30-23 WMC-FM, 9-8 KIOA, 8-8 WFIL, 6-4 XEROK.
P3	19-12 WAMS, 9-6 KILT, 12-8 WZZM-FM, 19-7 WMAK, 21-17 WPGC, 7-5 KYSN, 7-2 WAKY, 27-21 WISM, 19-16 WCFL, 17-14 WCOL, 19-15 KLIF, debut 23 KRUX, 17-14 WPOP, 13-4 WBBQ, 22-16 KEEL, 14-11 KJRB, 24-19 KDZA, 30-24 WGH, 9-4 KKXL, 14-12 KGW

NOTES: Had a big week at many stations.

## DEFINITION OF PARALLELS:

**SIMPLY PUT:** they group similar stations together by playlist size and air presentation.

**REASON:** To better define what's happening with a given record at a particular type of radio station. (KHJ should not be compared with WHYY.)

**EASY WAY TO USE:** First, find which Parallel your station fits into by using the boxed definitions below. You can watch a record's progress at various stations, and affirm your decision to go or not to go on a record. You can also tell at a glance what action the record's receiving at stations.

- P1: Top 15 major markets/20-30 record playlist/emphasize 7-10 "hot records" /very little new product added.
- P2: Secondary market/20-30 record playlist/emphasize 7-10 "hot records" /very little new product added.
- P3: Major and secondary market stations with 30-50 record playlists/some new product exposed.
- P4: Specialized markets affected by black or country influences.

**JIM CROCE**  
(ABC) 2:30

*I'll Have To Say I Love You In A Song*

P1	12-11 WPIX, debut 17 WLS, 14-17 WQXI, 18-14 KKDJ, 14-9 KQV, on WDRQ, 10-14 KSLQ, 20-14 WFIL, 12-10 K100, 13-11 KHJ, 18-18 KFRC, 13-12 WRKO
P2	12-10 WSAI, 8-17 KYNO, 28-21 WHBQ, on WAXY, 21-14 KAKC, 19-20 KFXM, 11-16 Y100, 25-21 WGOW, 17-14 KCPX, 18-14 WGRQ, 17-10 WIFE, 19-13 KAFY, 11-13 WOKY, 15-9 KCBQ, 14-12 KTKT, 10-8 KIMN, 16-7 WMYQ, 9-5 KRSP, 18-13 WMC-FM, 13-10 KIOA, 22-16 WFLI, 12-9 XEROK, 18-21 WROK
P3	18-14 WAMS, 10-10 WZZM-FM, 7-6 WMAK, 16-28 WPGC, 6-3 KYSN, add WAKY, 22-16 WISM, 7-7 WCFL, 7-3 WCOL, 9-9 KLIF, 3-1 KRUX, 9-6 WPOP, 2-2 WBBQ, 16-12 KEEL, 10-9 KDZA, 23-18 WGH, 19-26 KKXL, 4-9 KGW

NOTES: Heading for a high in the top 10.

**MAC DAVIS**  
(Columbia) 2:52

*One Hell Of A Woman*

P1	
P2	29-22 KCPX, on WIFE, debut 28 KIOA
P3	29-27 WZZM-FM, debut 30 WAKY, 30-20 WCOL, 38-33 KLIF, 21-12 WBBQ, 37-35 KEEL, 15-18 KJRB

NOTES: Excellent growth, looks like a hit.

**JOHN DENVER**  
(RCA) 3:18

*Sunshine On My Shoulder*

P1	2-2 WPIX, 4-5 WPEZ, 10-21 WLS, 8-8 WQXI, on KDWB, 7-8 KQV, 5-6 WDRQ, 4-3 KSLQ, 3-3 WFIL, 7-7 K100, 7-10 KHJ, 6-7 99X, 3-7 KFRC, 7-6 WRKO, 3-2 CKLW
P2	20-13 KFXM, 12-10 Y100, 5-5 WGRQ, 5-11 WIFE, 6-7 KAFY, 8-8 WOKY, 2-3 WKBW, 5-2 KCBQ, 3-9 KTKT, 13-14 KIMN, 5-6 WMYQ, 1-8 WMC-FM, 4-4 KIOA, 19-27 WFLI, 6-7 WGH, 18-19 XEROX, 7-19 WSAI, 4-1 KYNO, 7-9 WHBQ, on WAXY, 15-20 WROK,
P3	1-1 WAMS, 11-25 WZZM-FM, 18-26 WMAK, 12-19 WPGC, 10-23 KYSN, 21-24 WAKY, 3-10 WISM, 17-22 WCFL, 11-14 KRUX, 2-8 WPOP, 17-24 WBBQ, 3-3 KEEL, 20-28 KJRB, 21-29 KDZA

NOTES:

**DOOBIE BROTHERS**  
(WB) 3:39

*Another Park, Another Sunday*

P1	
P2	29-26 KYNO
P3	28-26 KYSN, 35-30 WCOL, 29-21 KJRB, debut 36 KKXL

NOTES: Still slow for a typical Doobies record.

# PARALLELS

**EMOTIONS**  
(Volt) 3:10

*Put A Little Love Away*

P1	8-7 WFIL
P2	
P3	31-31 KEEL

NOTES:

**FIVE MAN ELECTRICAL BAND**  
(Polydor) 3:28

*Werewolf*

P1	24-30-CKLW
P2	on WGOW, 30-25 KCPX, 29-27 KRSP, add WMC-FM, 28-20 KIOA
P3	15-11 WMAK, debut 39 KYSN, add WISM, 31-29 WCOL, 31-30 KJRB

NOTES: Doing fairly well and pulling good phones.

**LOIS FLETCHER**  
(Playboy) 2:32

*I Am What I Am*

P1	On WPIX
P2	Add KCPX
P3	Add WPGC, 24-20 WCFL, on KJRB

NOTES: Came alive this week.

**GRAND FUNK**  
(Grand Funk) 2:45

*Locomotion*

P1	23-20 WPIX, debut 18 WPEZ, 11-7 WLS, 5-5 WQXI, on KDWB, 13-6 KQV, 5-3 CKLW, 1-1 KKDJ, 2-1 WDRQ, 11-6 KSLQ, 25-18 WFIL, 5-1 K100, 3-3 KHJ, 18-16 99X, 21-15 KFRC,
P2	on WAXY, 7-3 KAKC, 11-4 WKBW, 5-1 WSAI, 23-19 KYNO, 13-6 WHBQ, 22-12 WROK, 14-8 KFXM, 10-2 Y100, 4-3 WGOW, 3-1 KCPX, 1-1 WGRQ, 13-4 WIFE, 2-1 KAFY, 5-3 WOKY, 6-5 KCBQ, 13-7 KTKT, 5-4 KIMN, 3-2 WMYQ, 6-1 KRSP, 19-14 WMC-FM, 3-2 KIOA, 1-2 WFLI, 3-1 XEROX,
P3	22-15 WAMS, 32-16 KILT, 4-2 WZZM-FM, 2-2 WMAK, 4-2 WPGC, 12-2 KYSN, 22-10 WAKY, 12-5 WISM, 18-14 WCFL, 1-1 WCOL, 16-11 KLIF, 22-13 KRUX, 18-13 WPOP, 4-11 WBBQ, 3-3 KJRB, 16-10 KDZA, 9-5 WGH, 3-2 KKXL, 9-6 KGW

NOTES: One of the strongest this week.

**GUESS WHO**  
(RCA) 2:37

*Star Baby*

P1	On KDWB
P2	6-4 KCPX, 27-16 WOKY, 5-8 KTKT, 8-16 KRSP, 27-25 WMC-FM, 24-24 KIOA, 27-25 WSAI, Debut 28 WROK
P3	40-34 KILT, 34-26 WPGC, 33-23 WCFL, 11-8 KLIF, on KRUX, 9-7 WBBQ, 25-39 KJRB, on WGH, 7-13 KKXL, 25-30 KGW

NOTES: Still alive & spreading

**MARVIN HAMLISCH**  
(MCA) 2:57

*Music From "The Sting"*

P1	On WPIX, add on WQXI, on KDWB, debut 23 KKDJ, 10-4 WDRQ, 17-13 KSLQ, Add WFIL, add K100, debut 28 KHJ, 12-9 KFRC, 8-8 CKLW, debut 29 WRKO
P2	Add KFXM, 22-6 WGOW, add KCPX, debut 23 WGRQ, on WIFE, add KAFY, 13-7 WOKY, 26-19 KCBQ, 16-10 KIMN, debut 18 WMYQ, 15-15 KRSP, 30-25 KIOA, 13-10 WFLI, 25-14 WSAI, on WAKY, 29-10 WKBW, debut 29 WROK
P3	22-15 KILT, 1-1 WZZM-FM, 30-20 WMAK, add WPGC, 26-19 WCFL, 11-6 WCOL, 24-18 KLIF, add KRUX, 7-3 WPOP, 5-1 WBBQ, 34-32 KEEL, 35-24 KJRB, 35-25 KDZA, add KYNO

NOTES: Funny how an academy award changes programmers minds-one of the most added.

**ALBERT HAMMOND**  
(Mums) 3:16

*I'm A Train*

P1	30-27 KFRC, 30-26 WRKO
P2	On KFXM, 13-13 KCPX, add WGRQ, 12-9 WIFE, 17-13 KRSP, 25-26 KIOA, debut 21 WFLI, 22-20 KYNO, debut 30 WHBQ, add KAKC, 27-22 WKBW
P3	Debut 27 WAMS, 23-20 WZZM-FM, 26-25 WMAK, 20-20 WPGC, 23-21 KYSN, 23-24 WISM, 38-34 WCFL, 12-19 WCOL, 36-36 KLIF, on KRUX, 26-24 WPOP, 10-25 WBBQ, 8-15 KJRB, 37-31 KDZA, 35-30 WGH, 15-9 KKXL, 17-15 KGW

NOTES:

**BO DONALDSON AND THE HEYWOODS**  
(ABC) 3:25

*Billy, Don't Be A Hero*

P1	Debut 25 KKDJ, add WFIL
P2	Add Y100, debut 29 KCPX, debut 29 WGRQ, debut 22 KTKT, add KIMN, debut 29 KRSP, debut 23 WSAI
P3	Add WAKY, debut 40 WCFL, debut 39 KKXL, debut 39 KDZA

NOTES: So far this one is getting more response of the two versions.

**THE HOLLIES**  
(Epic) 3:45

*The Air That I Breathe*

P1	
P2	
P3	On WAMS, debut 40 KILT, 39-33 KJRB, add KKXL

NOTES:

**TERRY JACKS**  
(Bell) 3:24

*Seasons In The Sun*

P1	5-8 WPIX, 2-3 WPEZ, 6-8 WLS, on KDWB, 4-5 KKDJ, 12-16 WDRQ, 6-12 KSLQ, 11-21 WFIL, 3-5 K100, 4-6 KHJ, 3-8 99X, 3-1 KFRC, 3-3 WRKO, 20-20 CKLW
P2	12-12 KFXM, 6-5 Y100, 5-12 KCPX, 6-7 WGRQ, 20-22 WIFE, 10-14 KAFY, 4-6 WOKY, 3-3 KCBQ, 6-16 KTKT, 2-2 KIMN, 10-7 WMYQ, 3-7 WMC-FM, 1-3 KIOA, on WFLI, 8-14 XEROX, 8-12 WSAI, 6-12 WHBQ, on WAXY, 8-11 WROK
P3	14-18 WAMS, 19-29 KYSN, 16-21 WAKY, 11-15 WISM, 20-33 WCFL, 21-27 KRUX, 4-4 WPOP, 4-9 KJRB, 4-7 KDZA, 5-13 WGH

NOTES:

**THE JACKSON FIVE**  
(Motown) 2:29

*Dancing Machine*

P1	28-17 WPIX, debut 19 WQXI, debut 24 KKDJ, 21-14 KQV, 4-3 WDRQ, 13-8 KSLQ, debut 27 WFIL, 29-20 K100, 30-19 KHJ, 7-4 99X, 19-11 KFRC, 20-15 WRKO, 2-1 CKLW
P2	Debut 29 KFXM, 20-12 Y100, 3-2 WGOW, 15-9 WGRQ, on WIFE, add KAFY, 13-10 KAKC, 30-20 WOKY, add KTKT, 26-18 KIMN, 18-8 WMYQ, debut 31 KRSP, 29-18 WMC-FM, 21-7 KIOA, 27-17 WFLI, debut 15 XEROX, 27-25 KYNO, 14-7 WHBQ, on WAXY, 21-16 WKBW
P3	Debut 25 KILT, 21-19 WMAK, 10-25 WPGC, 15-9 WAKY, 29-26 WISM, 31-26 WCFL, 18-11 WCOL, 31-24 KLIF, 26-16 KRUX, add WPOP, 20-6 WBBQ, 36-29 KJRB, 38-35 KDZA, 32-19 WGH, debut 38 KKXL

NOTES: Strong sales and request-almost all teen phones.

# PARALLELS

SAMI JO (MGM South) 2:59 *Tell Me A Lie*

P1	4-10 WQXI, 17-17 KQV
P2	Debut 28 KFXM, 25-21 KCPX, 30-25 WIFE, 17-15 WOKY, add KRSP, 24-21 WMC-FM, 16-21 KIOA, debut 25 WFLI, 11-5 KYNO, debut 28 WHBQ, debut 26 KAKC
P3	Debut 30 WAMS, 4-12 WMAK, 38-35 WCOL, 15-18 KRUX, 19-21 WBBQ, 25-23 WPOP, 15-14 KEEL

NOTES:

BILLY JOEL (Columbia) 3:16 *Piano Man*

P1	11-13 WPIX, 20-6 WQXI, on KDWB, debut 23 KQV, 10-10 WFIL, 23-23 K100, 21-20 WRKO
P2	18-18 KFXM, debut 23 WGOW, 16-11 KCPX, 13-11 WGRQ, 10-13 WIFE, debut 25 KAFY, 22-22 WOKY, debut 23 KTKT, 20-24 KIMN, 17-17 WMYQ, debut 14 KRSP, 12-15 KIOA, 26-26 WFLI, 16-12 KYNO, 12-11 WHBQ, 24-18 KAKC, 6-8 WKBW
P3	7-5 KILT, 23-22 WAMS, 7-7 WZZM-FM, 27-31 WPGC, 16-18 KYSN, 28-27 WISM, 13-13 KLIF, 27-19 KRUX, 19-5 WPOP, 6-14 WBBQ, 12-11 KEEL, 20-17 KDZA, 15-11 WGH, 18-11 KKXL, 18-16 KGW

NOTES: Slow week in some markets.

ELTON JOHN (MCA) 5:12 *Bennie & The Jets*

P1	7-4 WPIX, 1-1 WPEZ, 2-1 WLS, 12-7 WQXI, on KDWB, 1-1 KQV, 2-2 KKDJ, 3-8 WDRQ, 1-2 KSLQ, 1-1 WFIL, 1-3 K100, 2-2 KFRC, 1-1 WRKO, 11-15 CKLW
P2	1-1 KFXM, 7-6 Y100, 2-7 WGOW, 1-2 KCPX, 2-4 WGRQ, 1-3 WIFE, 1-2 KAFY, 2-2 WOKY, 1-1 KCBQ, 1-1 KTKT, 12-13 KIMN, 2-4 WMYQ, 1-4 KRSP, 6-1 WMC-FM, 5-5 KIOA, 5-7 WFLI, 5-3 XEROX, 2-2 WSAI, 3-13 KYNO, 1-1 WHBQ, on WAXY, 3-9 KAKC, 4-1 WROK, 4-1 WKBW
P3	1-1 KILT, 2-3 WAMS, 5-9 WZZM-FM, 2-3 WMAK, 2-1 WPGC, 2-8 KYSN, 14-20 WAKY, 2-1 WISM, 2-2 WCFL, 4-9 WCOL, 4-3 KLIF, 2-3 KRUX, 1-8 WBBQ, 1-1 WPOP, 2-4 KEEL, 2-4 KJRB, 2-4 KDZA, 1-1 WGH, 5-8 KKXL, 2-2 KGW

NOTES:

OLIVIA NEWTON-JOHN (MCA) 3:12 *If You Love Me*

P1	
P2	Debut 22 WGOW, 21-18 WFLI
P3	23-15 WMAK, 35-23 WPGC, 33-24 WCOL

NOTES: Scott Shannon (WMAK) says top 5 solid hit.

GLADYS KNIGHT & THE PIPS (Buddah) 3:45 *Best Thing That Ever Happened To Me*

P1	9-6 WPIX, 18-14 WLS, 7-4 KKDJ, 9-12 CKLW, 11-11 WRKO, 16-13 WFIL, 9-4 KSLQ, 13-9 K100, 8-6 99X, 4-3 KQV, 8-13 WDRQ, 9-9 KHJ, 8-8 KFRC
P2	On WAXY, 4-3 KFXM, 9-4 Y100, 18-19 WOKY, 20-11 KTKT, 15-20 WFLI, 2-3 WHBQ, 8-4 KAFY, 6-3 WMYQ, 14-9 WSAI, 12-5 WMC-FM, 2-4 KAKC, 11-8 WGRQ, debut 19 KIMN, 4-10 XEROK, 27-18 KIOA, 5-14 KYNO, 19-15 WKBW, 12-16 WROK
P3	3-4 KILT, 17-17 WAMS, 3-9 WBBQ, 16-25 WPOP, 5-4 KRUX, 5-13 WMAK, 5-4 WPGC, 8-16 KYSN, 2-3 WAKY, 9-6 WISM, 7-4 KLIF, 10-7 KJRB, 8-8 KDZA, 4-7 KEEL, 9-8 WCFL, 19-17 WZZM-FM, 4-4 WGH, 11-7 KGW

NOTES: Still showing good growth.

KOOL AND THE GANG (DeLite) 3:08 *Jungle Boogie*

P1	13-15 WPEZ, 10-15 KHJ, 10-14 K100, 27-28 WRKO, 13-18 KKDJ
P2	16-25 KFXM, 19-19 Y100, 12-12 KCBQ, 8-10 KTKT, 5-13 KAKC, 4-3 KCPX, 9-12 WIFE, 2-6 KRSP, 7-2 KYNO, 3-5 KAFY, 17-19 WGRQ, 17-21 KIMN, 17-19 WROK
P3	12-16 WMAK, 29-37 WCFL, 11-18 KDZA

NOTES:

GORDON LIGHTFOOT (Reprise) 3:37 *Sundown*

P1	26-23 CKLW
P2	On WIFE, 26-19 KIOA, debut 28 WSAI
P3	23-17 WBBQ, debut 24 WMAK, debut 33 WPGC, debut 38 KYSN, 39-34 KEEL, Debut 30 WZZM-fm, 29-21 WCOL, 22-12 KJRB, debut 42 KDZA, 24-21 KGW

NOTES: Good beginnings.

LOBO (Big Tree) 2:45 *Standing At The End Of The Line*

P1	
P2	25-23 WOKY, debut 30 KCPX
P3	Add WPGC, add WAKY, add KJRB, 28-24 WCFL, add KEEL, debut 38 WGOL

NOTES: Picked up many new believers.

MAIN INGREDIENT (RCA) 3:31 *Just Don't Want To Be Lonely*

P1	17-9 WPIX, debut 15 WLS, 25-21 WQXI, debut 28 WFIL, 27-26 KSLQ, 16-16 KQV, 30-26 K100, 7-5 KFRC
P2	22-15 KFXM, 19-15 WGRQ, 21-16 WMC-fm, 26-21 WKBW, 31-27 KCPX, 30-26 KRSP, 25-18 WHBQ, 23-17 WIFE, add KIMN, debut 28 KYNO
P3	Add KILT, 29-25 WAMS, 26-19 WBBQ, 25-25 KRUX, 11-16 WPGC, 21-20 KYSN, 28-19 WAKY, debut 28 WISM, 8-6 WCFL, 26-23 KLIF, 27-25 KJRB, 32-27 KDZA, 19-17 KEEL, 19-17 WCOL, 18-22 WZZM-FM, 28-22 WGH, 27-25 KGW

NOTES: Showing top 10 potential in many markets

PAUL MC CARTNEY & WINGS (Apple) 3:50 *Band On The Run*

P1	Add WPIX, debut 21 WPEZ, add WQXI, add WFIL, debut 30 K100, debut 22 KQV, on WDRQ
P2	30-25 Y100, add WGOW, add WGRQ, debut 30 KRSP, 30-21 WSAI, debut 26 KCPX, 27-20 KCBQ, debut 30 KIMN, add XEROK, add KAFY, add WOKY, add KTKT, 28-23 KYNO
P3	Add KILT, debut 30 WPOP, on WMAK, 33-30 KYSN, debut 24 KGW, 32-27 KEEL, 30-24 WZZM-FM, debut 39 WGH, 39-31 KLIF, debut 31 KJRB, 40-36 KDZA

NOTES: One of the most active.

PAUL MC CARTNEY (Apple) 3:45 *Jet*

P1	8-8 WPEZ, 13-10 WLS, 8-13 K100, 17-21 KFRC, 5-5 KSLQ, 8-10 KKDJ, 11-16 KHJ, 13-17 99X, 9-11 WFIL, on KDWB, 8-16 WRKO
P2	6-16 KFXM, 18-21 Y100, 12-19 WMYQ, 11-15 WIFE, 9-12 WOKY, 5-6 WMC-FM, 28-17 WKBW, 8-13 WGRQ, 4-7 KRSP, 4-7 KAKC, WROK 7-13
P3	6-11 KILT, 10-9 WAMS, 16-17 KRUX, 17-22 WMAK, 7-8 WPGC, 12-17 WAKY, 8-17 WISM, 5-17 WCFL, 9-14 KDZA, 9-21 WZZM-FM, 19-22 KGW

NOTES:

**SISTER JANET MEAD**  
(A&M) 2:59

*The Lord's Prayer*

P1	8-10 WPIX, 12-13 WPEZ, 3-3 WLS, 17-26 WFIL
P2	9-6 KFXM, 4-7 Y100, debut 25 KCBQ, 6-4 WSAI, 9-5 WHBQ, 2-3 WROK, 2-6 KCPX, 3-4 WOKY, 10-14 WMYQ, 9-3 WMC-FM, 14-21 KAKC, 3-5 WKBW, 11-11 KAFY, 11-17 KRSP, 12-17 KTKT, 8-9 KIOA, on WAXY
P3	8-6 WAMS, 10-11 WPOP, 38-40 KYSN, 4-3 WISM, 3-3 KDZA, 6-6 KEEL, 6-16 WZZM-FM, 3-15 WCFL, 7-2 KJRB, 8-6 WGH, 3-8 KGW

NOTES:

**MFSB**  
(Phy/Int) 3:29

*TSOP*

P1	1-1 WPIX, 18-17 WPEZ, 17-12 WLS, 1-2 WQKI, 1-4 CKLW, 4-5 WRKO, 2-2 WFIL, 7-9 KSLQ, 6-7 KKDJ, 5-4 KHJ, 1-1 99X, 3-2 KQV, 7-5 WDRQ, on KDWB, 4-4 K100, 4-1 KFRC
P2	13-10 WROK, 3-2 KFXM, 1-1 Y100, 15-18 WGOW, 7-6 KCBQ, 1-1 WMYQ, 4-3 WSAI, 8-4 WMC-FM, 10-8 KYNO, 10-8 KCPX, 3-2 WIFE 10-9 WOKY, 9-7 KIMN, 7-8 XEROK, 3-2 WHBQ, 1-2 KAKC, on WAXY, 8-7 WKBW, 4-3 KAFY, 4-3 WGRQ, 16-10 KRSP, 7-2 KTKT, 23-24 WFLI
P3	2-2 KILT, 5-4 WAMS, 11-16 WBBQ, 6-2 WPOP, 6-5 KRUX, 14-4 WMAK, 18-27 WPGC, 5-6 KYSN, 10-5 WAKY, 6-4 WISM, 15-10 WCFL, 6-6 KLIF, 18-27 KJRB, 7-5 KDZA, 5-1 KEEL, 6-7 WCOL, 8-4 WZZM-FM, 3-3 WGH, 7-4 KGW

NOTES:

**JONI MITCHELL**  
(Asylum) 3:22

*Help Me*

P1	Debut 30 WRKO, 17-17 CKLW
P2	Debut 30 KFXM, 25-21 KTKT, on WSAI
P3	Debut 38 KILT, on WAMS, debut 18 WPOP, add KRUX, 28-22 WPGC, 18-14 KYSN, 13-18 WISM, 25-24 KEEL, 25-19 KLIF, 41-38 KDZA, 27-26 WCOL, 16-11 WZZM-FM, 31-23 WGH, 21-17 KGW

NOTES: Had a good week.

**MOCEDADES**  
(Tara) 3:12

*Eres Tu*

P1	10-5 WPIX, 5-6 WLS, 23-24 WRKO, 6-9 WFIL, 9-13 KQV, on KDWB
P2	16-23 Y100, 19-21 WOKY, 11-15 WMC-FM, 6-4 WROK, 7-6 WGRQ, 14-18 XEROK, 8-15 WHBQ, 10-11 KCBQ, 11-15 WGH, 19-29 KAKC, on WAXY
P3	6-4 WCFL

NOTES:

**MARIA MULDAUR**  
(Reprise) 3:36

*Midnight At The Oasis*

P1	24-11 WQXI, on K100, on KDWB, 16-8 WRKO, debut 30 WFIL, 24-13 KFRC
P2	27-23 KFXM, debut 25 WGOW, 21-20 KRSP, 10-7 WSAI, 19-17 KIOA, debut 30 WROK, on WIFE, on WGRQ, 21-15 KIMN, add XEROK, add KYNO, 26-24 KCPX, debut 29 WOKY, debut 24 KTKT, debut 27 WMC-FM
P3	29-19 KILT, add WAMS, 15-5 WBBQ, 20-10 WPOP, debut 26 KRUX, 24-18 WMAK, 3-5 WPGC, 24-17 KYSN, debut 29 WISM, 35-29 WCFL, 24-38 KJRB, 36-27 WGH, on KEEL, 30-25 KLIF, 22-15 WZZM-FM, 34-30 KDZA, 10-14 KGW

NOTES: One of the biggest movers of the week, should go top 10.

**NILSSON**  
(RCA) 3:03

*Daybreak*

P1	On WPIX, 25-17 WRKO
P2	28-28 KRSP
P3	28-19 KJRB, 26-20 KGW, debut 31 WZZM-FM

NOTES: Too early to track a pattern.

### DEFINITION OF PARALLELS:

**SIMPLY PUT:** they group similar stations together by playlist size and air presentation.

**REASON:** To better define what's happening with a given record at a particular type of radio station. (KHJ should not be compared with WHHY.)

**EASY WAY TO USE:** First, find which Parallel your station fits into by using the boxed definitions below. You can watch a record's progress at various stations, and affirm your decision to go or not to go on a record. You can also tell at a glance what action the record's receiving at stations.

**P1:** Top 15 major markets/20-30 record playlist/emphasize 7-10 "hot records" /very little new product added.

**P2:** Secondary market/20-30 record playlist/emphasize 7-10 "hot records" /very little new product added.

**P3:** Major and secondary market stations with 30-50 record playlists/some new product exposed.

**P4:** Specialized markets affected by black or country influences.

**O'JAYS**  
(Phil/Int) 3:45

*For The Love Of Money*

P1	18-11 CKLW, debut 28 KFRC, debut 11 WDRQ, add 99x
P2	Debut 29 WHBQ
P3	On WAMS, add WAKY, 39-28 WCOL

NOTES: Could be as big as "Love Train".

**GILBERT O'SULLIVAN**  
(Mam) 3:06

*Happiness Is Me & You*

P1	
P2	Add KFXM, 18-14 WIFE, 22-22 KRSP
P3	29-23 WBBQ, Add WPGC, 22-28 KYSN, 28-26 KDZA, 23-21 KEEL, 28-28 KLIF

NOTES:

**MIKE OLDFIELD**  
(Virgin) 3:18

*Tubular Bells/Theme From The "Exorcist"*

P1	21-19 WPIX, 8-5 WLS, 21-22 WQXI, add WABC, 22-21 WRKO, 30-29 WFIL, on KDWB, debut 29 KHJ, 6-4 KFRC, 20-18 KQV, 23-22 KSLQ, add CKLW, 17-14 99X
P2	Add KYNO, 6-1 KAKC, 11-9 KFXM, 5-15 Y100, 17-19 WGOW, 14-14 KCBQ, 9-9 WMYQ, 26-17 WSAI, 22-17 WMC-FM 23-19 KAFY, 7-1 WIFE, 14-14 WOKY, 1-1 KIMN, 13-6 XEROK, 15-14 KIOA, on WAXY, 22-15 KCPX, debut 30 WGRQ, 20-9 KRSP, 23-15 KTKT, 11-12 WFLI, 16-19 WHBQ 9-7 WROK, 10-11 WKBW
P3	5-8 KILT, 28-21 WAMS, 8-10 WBBQ, 13-11 KRUX, 6-9 WMAK, 6-6 WPGC, 1-1 KYSN, 9-12 WAKY, 19-11 WISM, 24-7 WPOP, 11-9 WCFL, 10-10 KLIF, debut 35 KJRB, 19-15 KDZA, 26-23 KEEL, 3-10 WCOL, 15-6 WZZM-FM, 12-10 WGH, 15-13 KGW

NOTES: One of this weeks strongest

**BILLY PAUL**  
(PHIL/Int) 2:57

*Thanks For Saving My Life*

P1	Debut 28 KSLQ, 26-25 KFRC, 9-9 WDRQ, 6-6 CKLW, 24-20 WFIL
P2	29-27 WGRQ, 29-22 WHBQ, debut 29 KYNO
P3	15-11 WAMS, on KRUX, 33-25 KEEL

NOTES:

# PARALLELS

COZY POWELL  
(Chrysalis) 3:32

*Dance With The Devil*

P1	15-14 WPEZ
P2	Add KFXM, 3-3 KRSP, 28-20 WSAI, 8-5 KCPX, 14-11 KIMN, 18-16 KIOA, 29-27 WIFE, debut 25 KTKT
P3	On WPGC, 30-19 KYSN, debut 30 WISM, 2-4 WCOL, debut 38 WGH, 16-26 KJRB, 42-40 KDZA, 23-18 KGW

NOTES: Varies market to market.

ELVIS PRESLEY  
(RCA) 2:20

*I've Got a Thing About You Baby*

P1	
P2	7-13 WFLI
P3	16-28 WMAK

NOTES:

REDBONE  
(Epic) 3:30

*Come And Get Your Love*

P1	5-6 WPEZ, 15-9 WLS, 8-8 KHJ, 11-12 KKDJ, on KDWB, 2-2 99X, 15-11 KSLQ, 6-8 K100, 10-12 KFRC
P2	7-5 KFXM, 8-9 Y100, 7-8 WGOW, 1-2 XEROK, 17-17 WHBQ, 9-12 KAFY, 21-24 WOKY, 4-9 KIMN, 6-5 WFLI, on WAXY, 4-7 KCBQ, 8-11 WMYQ, 22-18 WSAI, 7-9 WMC-FM, 14-9 WROK
P3	23-30 KRUX, 13-16 WAKY, 10-13 WISM, 14-5 WCFL, 22-21 WGH, 7-8 KEEL, 6-11 KDZA

NOTES: still growing in several markets that were late in starting or had re-added it.

HELEN REDDY  
(Capitol) 3:03

*Keep On Singing*

P1	14-14 WPIX, 10-9 KKDJ, 12-12 KHJ, 23-23 WFIL, on KDWB, 13-10 KFRC, 19-15 KQV, 11-11 K100
P2	25-17 KFXM, 21-26 Y100, 24-24 WGOW, 16-13 KTKT, 22-23 KAKC, 20-20 KAFY, 22-16 WIFE, 10-18 KRSP, 14-6 KIOA, 24-23 WKBW, 12-10 KCPX, 12-10 WOKY, 24-22 KIMN, 20-18 KYNO, 26-22 WROK
P3	17-13 KILT, 30-29 WAMS, 22-22 WBBQ, 13-22 WPOP, 14-12 KRUX, 21-17 WMAK, 22-15 WPGC, 11-11 KYSN, 21-19 WISM, 23-21 WCFL, 12-12 KLIF, 9-8 KJRB, 15-13 KDZA, 21-18 KEEL, 13-13 WCOL, 27-29 WZZM-FM, 27-25 WGH, 12-10 KGW

NOTES:

CHARLIE RICH  
(Epic) 3:10

*Very Special Love Song*

P1	13-13 WQXI, 12-17 KSLQ, 14-13 KHJ, 11-11 KQV, 16-13 KKDJ, 9-9 WRKO, 18-17 WFIL, 15-15 K100, 16-16 KFRC
P2	17-14 KFXM, 12-15 WGOW, 4-4 KTKT, 10-9 WFLI, 12-6 KYNO, 27-26 WROK, 16-10 KAFY, 15-17 WOKY, 21-26 WSAI, 7-11 KIOA, 16-12 KAKC, 26-22 WGRQ, 30-23 KIMN, 19-13 XEROK, 28-20 WMC-FM, 9-6 WKBW
P3	8-9 KILT, 11-10 WAMS, 12-18 WBBQ, 8-17 WPOP, 8-10 KRUX, 11-10 WMAK, 25-29 WPGC, 13-12 KYSN, 8-13 WAKY, 24-20 WISM, 21-18 WZZM-FM, 17-16 KDZA, 10-10 KEEL, 5-5 KLIF, 12-17 KJRB

NOTES:

## DEFINITION OF PARALLELS:

**SIMPLY PUT:** they group similar stations together by playlist size and air presentation.

**REASON:** To better define what's happening with a given record at a particular type of radio station. (KHJ should not be compared with WHYY.)

**EASY WAY TO USE:** First, find which Parallel your station fits into by using the boxed definitions below. You can watch a record's progress at various stations, and affirm your decision to go or not to go on a record. You can also tell at a glance what action the record's receiving at stations.

- P1: Top 15 major markets/20-30 record playlist/emphasize 7-10 "hot records" /very little new product added.
- P2: Secondary market/20-30 record playlist/emphasize 7-10 "hot records" /very little new product added.
- P3: Major and secondary market stations with 30-50 record playlists/some new product exposed.
- P4: Specialized markets affected by black or country influences.

DIANA ROSS & MARVIN GAYE  
(Motown) 2:55

*My Mistake*

P1	
P2	Debut 28 KIMN, 20-19 WMC-FM
P3	Debut 26 WAMS, 24-24 KRUX, 33-13 WPGC, 12-6 KDZA, 20-19 KEEL 33-29 KLIF, debut 36 WCOL, 29-26 WGH

NOTES: Shows good beginnings.

LEON RUSSELL  
(Shelter) 2:38

*If I Were A Carpenter*

P1	
P2	5-4 WGOW, 13-16 KCBQ, 15-9 KAFY, debut 17 XEROK, 4-4 WFLI, 9-5 KAKC
P3	Debut 37 KJRB

NOTES: Good numbers where played.

CARLY SIMON & JAMES TAYLOR  
(Elektra) 3:45

*Mockingbird*

P1	4-12 WPIX, 11-9 WPEZ, 9-11 WLS, 8-14 WMAK, 6-7 KQV, on KDWB, 12-15 KKDJ, 3-10 KSLQ, 4-6 WFIL, 10-18 WCFL, 14-17 K100, 15-18 KHJ, 15-29 CKLW, 6-10 WRKO, 12-18 99X
P2	5-11 KFXM, 22-24 Y100, 9-11 WGOW, 14-21 KAFY, 14-19 WIFE, 24-26 WOKY, 20-22 KCBQ, 2-10 KYNO, on WAXY, 4-11 WMC-FM, 6-17 KIMN, 3-6 WSAI, 9-6 WFLI, 5-13 WHBQ, 10-17 KAKC, 10-15 WROK
P3	4-7 WAMS, 5-8 WISM, 17-18 WAKY, 25-36 KYSN, 8-18 WPGC, 4-7 KRUX, 3-9 WPOP, 5-10 KJRB, 20-28 WZZM-FM, 1-1 KLIF, 1-2 KKXL, 7-14 WGH, 18-22 KDZA

NOTES: Many have put into "Stashed" category

JIM STAFFORD  
(MGM) 3:12

*My Girl Bill*

P1	26-25 KSLQ
P2	Add WGOW, add KCPX, debut 28 WIFE, on WMYQ, add KRSP, debut 28 WOKY, 17-15 KCBQ, add KYNO, debut 27 WSAI, add XEROK
P3	Add WPGC, add WMAK, debut 29 WPOP, debut 27 WBBQ debut 32 KJRB, add KLIF, debut 39 WCOL

NOTES: One of the most added records this week.

# PARALLELS

**STAPLE SINGERS**  
(Stax) 3:26

*Touch A Hand, Make A Friend*

P1	5-9 WQXI, debut 21 WDRQ, 16-20 KSLQ
P2	23-21 KFXM, 5-8 KRSP, 17-15 KYNO, 10-11 XEROK
P3	On WAMS, 16-12 WISM, 27-27 KYSN, 30-24 WPGC, debut 29 WMAK, 28-28 KRUX, 14-14 KLIF, 37-32 WCFL, 16-7 KKXL, 16-8 WGH, 33-32 KDZA, 30-28 KGW

NOTES:

**RINGO STARR**  
(Apple) 3:15

*Oh My My*

P1	On WPIX, 16-18 WLS, 6-14 WQXI, 10-5 KQV, on KDWB, 14-11 KKDJ, 18-16 KSLQ, 12-12 WFIL, 9-6 K100, 6-5 KHJ, 15-14 WRKO
P2	8-7 KFXM, 13-14 Y100, 11-14 WGOW, 9-18 KCPX, 18-17 KAFY, 2-5 WIFE, 14-13 WMYQ, 13-24 KRSP, 7-11 WOKY, 23-18 KCBQ, debut 24 WGRQ, 9-13 KYNO, 23-23 KIOA, 16-10 WMC-FM, 21-19 KTKT, 18-22 WFLI, 8-6 KAKC, 7-9 WKBW, 11-8 WROK
P3	21-19 WAMS, 12-10 KILT, 14-9 WISM, 4-9 KYSN, 19-22 WAKY, 13-11 WPGC, 9-8 WMAK, 9-8 KRUX, 12-19 WPOP, 11-5 KEEL, 11-6 KJRB, 14-12 WZZM-FM, 8-7 KLIF, 9-8 WCOL, 13-13 WCFL, 21-17 KKXL, 13-12 KDZA, 5-3 KGW

NOTES: 33% show peak.

**CAT STEVENS**  
(A&M) 2:33

*Oh Very Young*

P1	On K100
P2	24-22 KFXM, add WIFE, debut 28 WMC-FM
P3	On WAMS, 20-18 KILT, add WISM, 15-13 KYSN, debut 32 WPGC, add KRUX, add WPOP, 14-13 WBBQ, 24-22 KEEL, debut 40 KJRB, 24-19 WZZM-FM, add KLIF, 23-22 WCOL, 24-21 KYNO, 26-19 KKXL, 37-31 WGH, debut 26 KGW

NOTES: Still looks good.

**RAY STEVENS**  
(Barnaby) 3:15

*The Streak*

P1	Debut No. 1 WQXI, Debut 29 K100, debut 29 KFRC
P2	1-1 WGOW, add KCPX, on KAFY, add KRSP, debut 30 WOKY, debut 25 KIMN, add KTKT, debut 30 WSAI, debut 20 XEROK, 3-1 WFLI, 30-10 WHBQ, debut 20 KAKC
P3	Debut 20 KILT, add WISM, 29-1 WAKY, debut 31 KYSN, 19-3 WPGC, 10-1 WMAK, add WPOP, 18-3 WBBQ, 40-20 KEEL, 23-13 KJRB, debut 18 WCOL, debut 30 WCFL, add KDZA

NOTES: Home run.

**STYLISTICS**  
(Avo) 4:45

*You Make Me Feel Brand New*

P1	10-4 WQXI, 13-8 WFIL, debut 27 K100, 23-21 CKLW
P2	Add KFXM
P3	24-20 WAMS, 9-10 WPGC, add KRUX, 32-30 KLIF, 22-15 WCOL, debut 38 WCFL, 24-17 WGH, 39-35 KDZA

NOTES: Looks pretty good.

**THREE DOG NIGHT**  
(ABC) 3:29

*The Show Must Go On*

P1	On WPIX, debut 20 WQXI, debut 21 KQV, on KDWB, 9-8 KKDJ, 17-17 WDRQ, 8-7 KSLQ, 26-22 WFIL, 19-12 K100, 16-7 KHJ, 27-25 CKLW, 10-7 WRKO, 23-19 KFRC
P2	30-25 WROK, 25-22 WMC-FM, 5-3 KIMN, 15-6 KTKT, debut 29 WSAI, 9-5 XEROK, 16-14 WKBW, 21-19 KFXM, 23-13 Y100, 16-5 WGOW, 11-7 KCPX, debut 22 KAFY, Debut 29 WIFE, debut 20 WMYQ, 7-2 KRSP, 6-5 WOKY, 25-24 KCBQ, 20-12 WGRQ, 13-7 KYNO, 13-10 KIOA, 12-8 KAKC, 24-11 WFLI, 15-14 WHBQ
P3	25-16 WAMS, 11-7 KILT, 30-25 WISM, 10-5 WAKY, 9-7 KYSN, 14-9 WPGC, 13-11 KGW, debut 30 WMAK, Debut 20 KRUX, debut 21 WPOP, debut 28 WBBQ, 17-9 KEEL, 6-5 KJRB, 17-14 WZZM-FM, 18-16 KLIF, 10-5 WCOL, 16-12 WCFL, 3-1 KKXL, 26-20 WGH, 5-1 KDZA,

NOTES: Great jumps most report excellent action.

**BOBBY WOMACK**  
(UA) 2:37

*Lookin' For A Love*

P1	18-18 WPIX, 19-16 WLS, 18-15 WQXI, 12-12 KQV, 20-16 KKDJ, 22-21 KSLQ, 14-19 WFIL, 17-16 K100, 18-14 KHJ, 23-17 KFRC
P2	10-10 KFXM, debut 20 Y100, 20-16 WGOW, 21-16 KAFY, 25-18 WIFE, 28-26 WGRQ, 25-24 KYNO, 11-8 WHBQ, on WAXY, 29-27 KIOA, 14-12 WMC-FM, debut 29 KIMN, 24-20 KTKT, 29-24 WROK
P3	7-8 WAMS, 26-23 WISM, 6-11 WAKY, 29-22 KYSN, 10-9 KRUX, add WPOP, 7-15 WBBQ, 18-15 KEEL, 21-21 KLIF, 30-27 WCFL, 14-12 WGH, 27-21 KDZA, 22-19 KGW

NOTES: P-1 stations show best movement.

**STEVIE WONDER**  
(Tamla) 3:40

*Don't You Worry 'about A Thing*

P1	On WPIX, add WQXI, 22-19 KQV, 20-19 WDRQ, debut 28 K100, 22-22 CKLW, 28-23 KFRC
P2	On WGOW, add KAFY, on WIFE, add WGRQ, 26-22 KYNO, debut 26 KIMN, debut 27 WHBQ, 26-22 KAKC, 30-24 WKBW
P3	Add WAMS, add WISM, 35-34 KYSN, add WMAK, debut 26 WBBQ, 35-30 KEEL, 32-23 KJRB, 28-26 WZZM-FM, 40-34 KLIF, 32-27 WCOL, 38-31 KKXL, debut 33 WGH, debut 29 KGW, 31-24 KDZA

NOTES: Another good week.

PARALLEL 1

- WPIX NEW YORK
- CKLW DETROIT/WINDSOR
- KFRC SAN FRANCISCO
- KHJ LOS ANGELES
- KKDJ LOS ANGELES
- KSLO ST. LOUIS
- WABC NEW YORK
- WDRQ DETROIT
- WRKO BOSTON
- 99X NEW YORK
- KDWB ST. PAUL/MINN.
- WFIL PHILADELPHIA
- WRC WASHINGTON D.C.
- 13Q PITTSBURGH
- WIBG PHILADELPHIA
- WPEZ PITTSBURGH
- K100 LOS ANGELES
- KQV PITTSBURGH
- WLS CHICAGO
- WQXI ATLANTA

PARALLEL 3

- WGH NEWPORT NEWS
- WRFC ATHENS
- KDZA PUEBLO
- KEEL SHREVEPORT
- KGW PORTLAND
- KILT HOUSTON
- KLEO WICHITA
- KLIF DALLAS
- KOIL OMAHA
- KOMA OKLAHOMA CITY
- WAYS CHARLOTTE
- WBBQ AUGUSTA
- WCAO BALTIMORE
- WCFL CHICAGO
- WCOL COLUMBUS
- WAMS WILMINGTON
- WISM MADISON
- WIXY CLEVELAND
- WMAK NASHVILLE
- WPGC WASHINGTON D.C.
- KSLY SAN LUIS OBISPO
- WMEX BOSTON
- WAKY LOUISVILLE
- WLOF ORLANDO
- KJRB SPOKANE
- KJR SEATTLE
- WPOP HARTFORD
- WERC BIRMINGHAM
- KYSN COLORADO SPRINGS
- KEWI TOPEKA

PARALLEL 2

- WKBW BUFFALO
- KFXM SAN BERNARDINO
- KCBQ SAN DIEGO
- KCPX SALT LAKE CITY
- KIMN DENVER
- KING SEATTLE
- KLIV SAN JOSE
- KRIZ PHOENIX
- KRSP SALT LAKE CITY
- WGRQ BUFFALO
- WHBQ MEMPHIS
- WIFE INDIANAPOLIS
- WOKY MILWAUKEE
- WMYQ MIAMI
- KIOA DES MOINES
- WGA SAVANNAH
- KAKC TULSA
- KAFY BAKERSFIELD
- Y100 MIAMI
- KYNO FRESNO
- WLEE RICHMOND
- WJDX JACKSON
- WSAI CINNCINATI
- KTKT TUCSON
- KUPD PHOENIX
- WFLI CHATTANOOGA
- XEROK EL PASO
- WMC FM MEMPHIS

PARALLEL 4

**Black Demographic**

- Examples
- DETROIT
- WASHINGTON D.C.
- CHICAGO
- SHREVEPORT
- RALEIGH
- RICHMOND
- PHILADELPHIA

**C&W Demographic**

- Examples
- NASHVILLE
- LOUISVILLE
- MEMPHIS
- HOUSTON
- DALLAS

# Country

## Programme Shoppe: Automated Country

Automated programming is certainly nothing new. Background music and jockless radio has been around for years. What's new, is the increased popularity of automation as a money-saving form of programming at a time when the economy, and radio stations in particular, are going through rough times. Jim Hampton and Chris Lane formed the Programme Shoppe last Oct. when their original parent company, Programming db, went under.

The Programme Shoppe opened up as a wing of Alto Communications, the parent company, that has been furnishing automated programming for airlines and radio outlets among them, RKO's FM operations. Under the agreement, Alto does the Shoppe's duplicating, sales and marketing out of their combined Hollywood facilities.

While Hampton and Lane are servicing stations with formats ranging from Olde Golde (nostalgia format) to Something to Love (a modified "good music" format with features) to automated rock (they'll unveil this format at the upcoming NAB), it's "Big Country" that's receiving the big push.

### BIG COUNTRY

Both the economic feasibility of syndicating an automated voice-tracked, Country format and their faith in the growth of the Country market, have convinced them Big Country is the wave of the future.

According to Hampton, "Country music is at the point now that rock was at about ten years ago; its appeal to the masses, the way the personalities in the music are revered, the degree of audience involvement."

"And, your Country audience is your 18-34 demographic group, too," Lane adds, "which is what makes the market so successful, advertising-wise. And it's an audience that's growing younger all the time."

### MARKETS

Eight markets are currently running Big Country (WBKR-Owensboro, Kentucky, CHYM-Kitchener, Toronto, WBGW-Bangor, Maine, WOLD-Marion, Virginia, WBG5-FM-Milwaukee, KBCM-Sioux City, and WIOV-Ephrata, Pennsylvania. And they've just signed up XPRS-San Diego (Rosarita, B.C. Mexico).

As Hampton explains it, the idea is "to upgrade the small markets, so that every station has the same chance to compete as the bigger markets. I'm not advocating that every station go to automation, but the costs involved make it tough for everyone to be live.

"The station out there in Wichita couldn't afford to hire, individually, the personalities we offer -- like Chris Lane, or Hugh Cherry. We're saying to them, 'well give you the entire radio station. Not only a library of a couple thousand records, but constant updating of the music, around-the-clock personalities, and you won't be able to tell that it's not live. Plus, we offer the jingles, features, promotions as part of the package.'

"When it's done, we've put together a franchise format, like a McDonald's. Ultimately, I'd like to see us in the position of saying, 'hey, your hamburgers are six ounces too large, and that's not the agreement we had. We won't allow you to do it that way.'

"We'd be saying it not so much out of



Chris Lane, co-founder of the Programme Shoppe.

arrogance, but out of the fact that we have as much pride in their success as they do. We want to be able to say, 'They're running Big Country; therefore, any time you turn on the station you can hear Big Country.'"

### ALL OR NOTHING

Because Big Country has an identity, or profile to maintain, just like a competitive rock station, Big Country subscribers have to take the entire package.

Chris Lane points to the recent growth in the Country audience and defines it as being altogether different from the larger Pop audience.

"With Country today, you've got both the traditional, old-line fans and the growing number of younger people. Our endeavor with Big Country is to bring both portions of the audience together.

### COUNTRY AUDIENCE

"I do not believe the Country audience will stand still and be fed the same thing over and over like the heavy rotation, tight playlist situation that rock audiences accept.

"There's that rich tradition of Country Music as being a whole thing, that should be presented intact. Say, if somebody has just found Charlie Rich for the first time with 'Most Beautiful Girl,' they're obviously going to want to hear his earlier works. The same with Ray Price, Merle Haggard. The people who've always been part of the Country audience love to hear the artist's earlier things because they remember them, and it's something fresh and new that somebody else has just found.

"If you look back in history, whenever the country's been in trouble, there's been a tremendous resurgence of Country. The country is in trouble now and it's looking back at its heritage for something it can build on. Two of the most popular musics today are Country and Black, and I think it's because both musics have a lot of truth to them.

"It's like Kristoffersen said, Country music is the white man's soul. It's real. Everybody can relate to a 'Help Me Make It Through the Night.' You can be in New York or Oklahoma and be lonely and relate to that song. That's what Country's about, truth. That's why it's only begun to tap the potential audience it has."

## INSIDE NASHVILLE by Biff Collie

Hank Snow the "comeback artist of the year?" His "Hello Love" is bound for the promised land, that's for sure! Betty Jean Robinson seems to be maturing as a top writer. Four Star's Bob Jennings has interesting neighbors. He learned after living next door to the Robinsons for four years, that she wrote songs (who doesn't) for a hobby. Four Star bossman Joe Johnson knows how to pick 'em. Besides, Bob's the leading golfer (in his family) . . . .

The two additionally confirmed new board members of Nashville Songwriters' Association (mentioned here last week) are: Mary Reeves Davis and songwriter-performer Bill Anderson. Also, per requests, songwriters who are interested in becoming members -- annual dues are \$10.00 to: Maggie Cavendar, Executive Director, Nashville Songwriters Association, 811 18th Avenue South, Nashville, Tennessee 37203.

Roy Clark's hosting of the Tonight Show last week was sensational, and doubtless will lead to more of that kind of thing for him. Even Bob Hope was impressed! . . . Roy, Glen Campbell, Charlie McCoy and Anne Murray entertained the golfers at the Greensboro open, and scored high (and that's good!) . . . Ditto Roy's hosting of the *Midnight Special*, with guests Conway Twitty, Mel Tillis, Diana Trask, Tom T., Lynn Anderson, Tommy Overstreet and Charlie Mc Coy was perhaps the best of the country shows, which have been really great (thank you Marty!).

That painting Thomas Hart Benton, the elder statesman of American art will do for the Country Music Hall of Fame will exceed \$20,000 in costs, shared by the Country Music Foundation and the Tennessee Arts Commission. Mr. Benton says he should be finished with it in the fall of this year. He's 84! Joe Allison was a driving force for years in the project to get this done. It's interesting that, since Joe Allison left Capitol, two of his record acts, Connie Cato (he produced her hit record of "Superskirt"), and Red Stegall (he produced his hit "I Gave Up Good Mornin'") have come on strong, thanks to Joe's studio style. Joe also turned Roy Clark's first hits, both on Capitol and then on Dot, plus a string of Hank Thompson hits. Joe has just this week moved into the new offices of his Allison Productions, Inc. and joint publishing firm with his partner record industry veteran Paul Wyatt. In case old friends want to make contact, their new office number is (616) 242-5636.

The Governor read in the paper about the Smiths selling their 500 acre ranch and home in Williamson County and he and the Mrs. stopped by to see them before they moved. It's really a showplace, and Carl and Goldie planned it, built it, worked it themselves . . . the new price tag is a million and a half . . . Ronnie Ressions and Patti Tierney (who've got their first duet release currently) will establish another precedent this week when they perform at the tennis classic Orlando. Pretty good racquet to get into, Ronnie!

More movies planned for Nashville and vicinity. The producers of "Walkin' Tall" are coming back for more, with Billy Don Baker ("Walkin'

Tall" star) to headline this one called "Framed". Some of the story will be shot (pardon me, filmed) at the Tennessee State Prison in Nashville. Sometime this summer.

When you see "Sugarland Express" (with "Last Picture Show" star Ben Johnson and Goldie Hawn), listen for Webb Pierce's songs throughout the picture . . . Donna Fargo and husband Stan Silver's new \$160,000 motor home makes it possible for her to live like a queen on the road, even though success means never being home. Bedrooms, Stateroom, Lounge, office, telephones, radio & TV . . . Well, at least it's a roof over their heads!

One thing that's not being nominated for awards in Nashville is the weather we've been having. Tornadoes never were comparable to No. 1 hit records, that's for sure!

"W.W. & The Dixie Dancekings" female star Connie Van Dyke got over her viral pneumonia and is working again. Great critical comments from the crew of the movie regarding Connie's professional acting work on this, her first movie . . . Burt likes her too!

Those Five Hundred and Thirty entertainment and business people who paid \$25 a plate to tell Red O'Donnell, columnist and No. 1 father-confessor of the country community how much they love him had at least as much fun as Red himself, and he couldn't have been happier. What a great guy! Among the gifts he received was a 1974 Mercury Brougham Automobile complete with his own personalized plates. As mistress of ceremonies, Brenda Lee was reading "his requests" telegram when Burt Reynolds walked on to personally present Red's wife Ebby with a bouquet of roses.

Don't mess with Ray Griff! He just received his Green belt in karate! (They were out of Black ones) . . . .

Would you believe Lois Johnson's car was stolen from Buddy Lee's parking lot? And would you believe five days later, she walked on the lot and there was her car, complete with all instruments, her purse (with money), gas in the gas tank and the car had been washed and waxed! . . . and would you believe that on the front seat was a note which read: . . . "Thanks . . . I Needed That!"

## FM ROCK RADIO

(Continued from page 8)

spite of the fact that it will be providing a tremendous public service, filling a definite cultural need and making music history, it is a commercial venture. None the less it is receiving a tremendous amount of media exposure in the form of news and some stations have gone so far as to become the "official" American Songwriting Festival station in their respective markets without benefit of financial remuneration. They know what they're doing and will probably benefit from it, absorbing rubbed off prestige.

The effects of commercials upon programming and their influence upon its ultimate success or failure run the gamut and can not be taken lightly or generalized.

(To Be Continued)





# REX ALLEN JR.

Has Country Music's Most Beautiful Single:

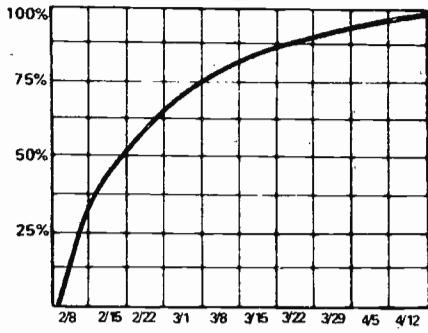
**“Goodbye”**  
(WB 7788)

Give it a warm hello. It's from Warner Bros. Country

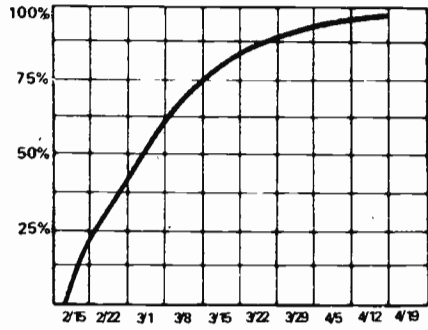


● signifies fastest moving records

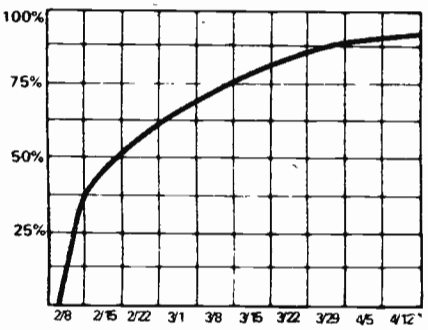
# 1 RICH



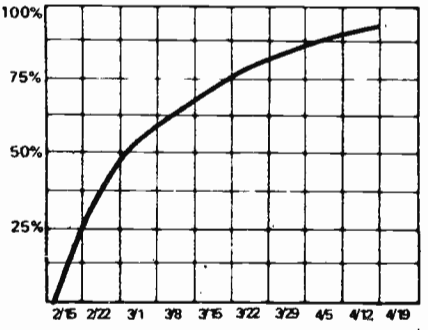
# 2 SNOW



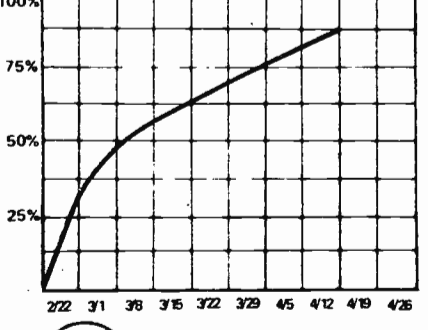
# 3 HART



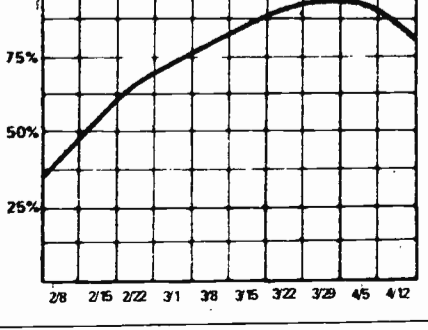
# 4 SMITH



# 5 MELBA



# 6 PRESLEY



# Country TOP TWENTY

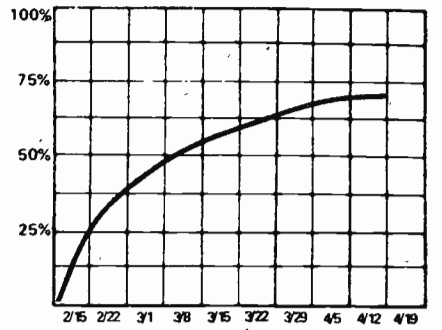
Friday, April 12, 1974

3/29	4/5	4/12	
2	1	1	1 CHARLIE RICH/Very Special Love Song (Epic)
3	2	2	2 HANK SNOW/Hello Love (RCA)
8	3	3	3 FREDDIE HART/Hang In There Girl (Capitol)
12	11	4	4 CAL SMITH/Country Bumpkin
15	10	5	5 MELBA MONTGOMERY/No Charge (Elektra)
9	6	6	6 ELVIS PRESLEY/Take Good Care/A Thing (RCA)
5	5	7	7 TANYA TUCKER/Lay With Me (Columbia)
19	13	8	8 MERLE HAGGARD/Things Aren't Funny (Capitol)
-	15	9	9 TOMMY OVERSTREET/You Were A Lady (Dot)
4	4	10	10 CONWAY TWITTY/Honky-Tonk Angel (MCA)
-	14	11	11 DONNA FARGO/I'll Try A Little Bit Harder (Dot)
6	7	12	12 MEL TILLIS/Midnight, Me And The Blues (MGM)
18	16	13	13 HANK THOMPSON/The Older The Violin (Dot)
10	12	14	14 JONES & WYNETTE(We're Not) The Jet Set (Epic)
-	19	15	15 SONNY JAMES/Is It Wrong (Columbia)
-	-	16	16 RAY STEVENS/The Streak (Barnaby)
7	8	17	17 MARTY ROBBINS/I'm Wantin' To (MCA)
-	-	18	18 DON WILLIAMS/Should Be Together (JMI)
-	-	19	19 BOBBY WRIGHT/Seasons In Sun (ABC)
-	20	20	20 JERRY WALLACE/Guess Who (MCA)

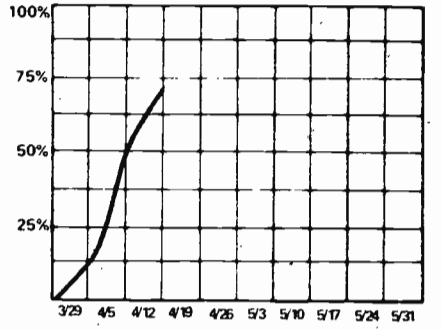
← The top twenty listings reflect SALES

The graphs measure the song's level of audience appeal

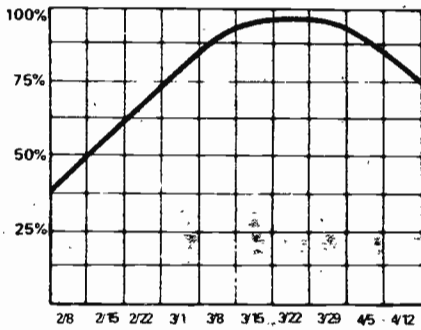
# 15 JAMES



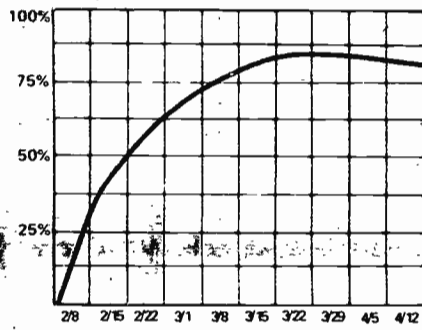
# 16 STEVENS



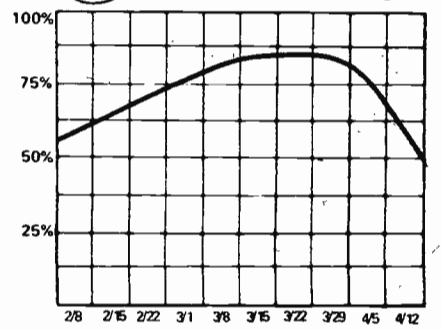
# 7 TUCKER



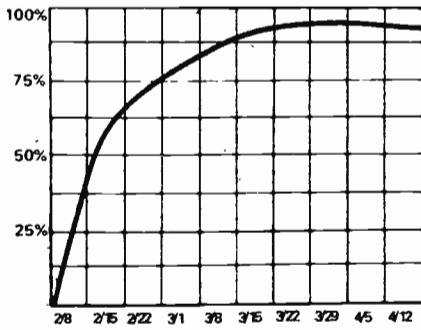
# 11 FARGO



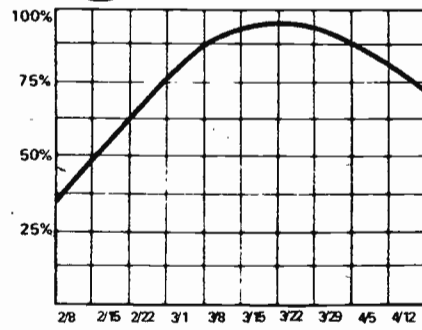
# 17 ROBBINS



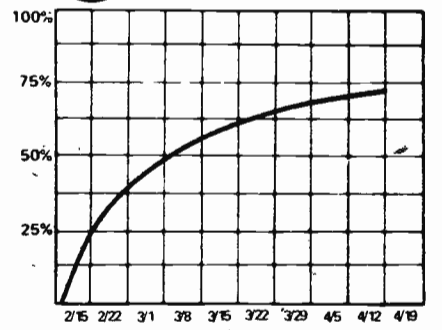
# 8 HAGGARD



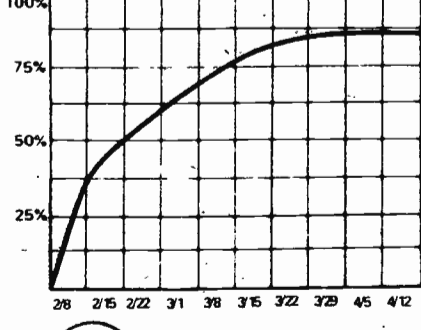
# 12 TILLIS



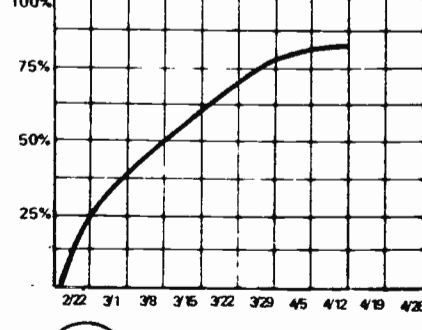
# 18 WILLIAMS



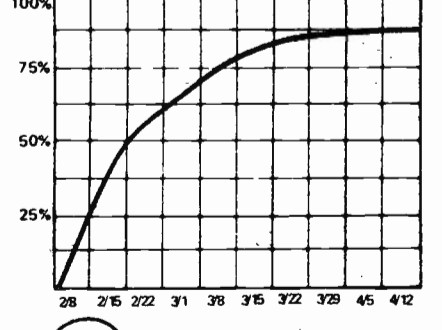
# 9 OVERSTREET



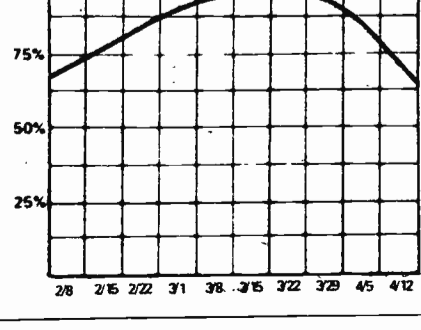
# 13 THOMPSON



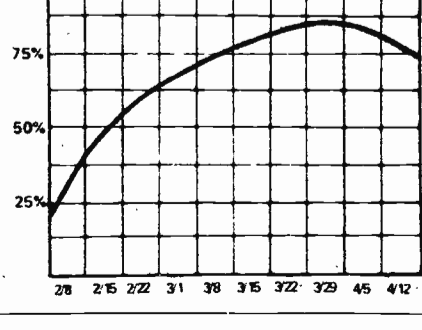
# 19 WRIGHT



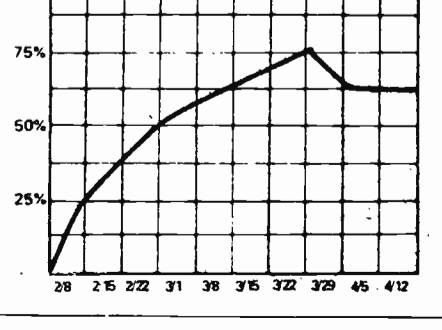
# 10 TWITTY



# 14 J&W

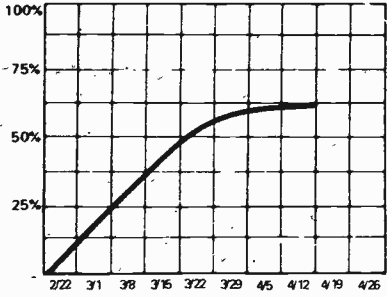


# 20 WALLACE

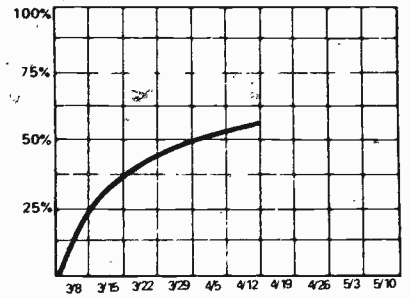


# Country SINGLES

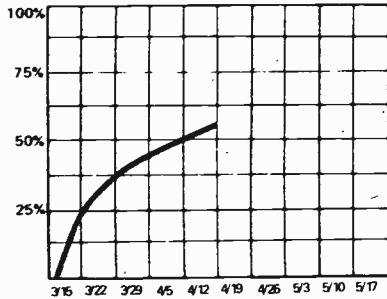
**LYNN ANDERSON**  
*Smile For Me (Columbia)*



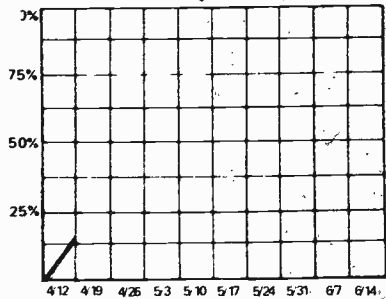
**BUCK OWENS**  
*Cover Of Music City News (Capitol)*



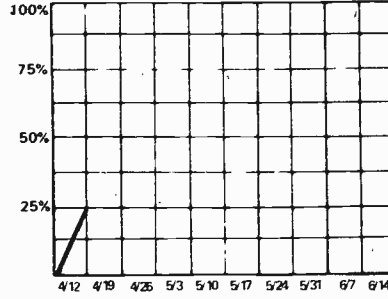
**HOYT AXTON**  
*When The Morning Comes (A&M)*



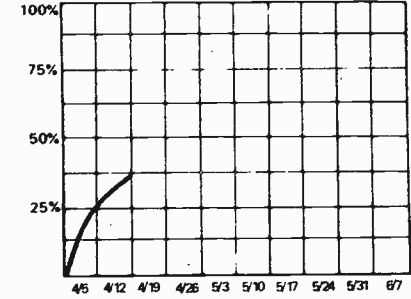
**NARVEL FELTS**  
*Till The End Of Time (Cinnamon)*



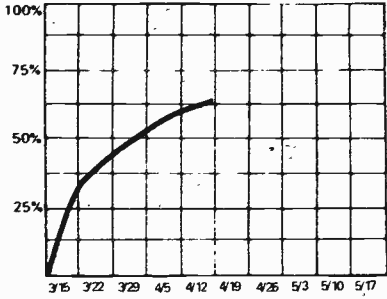
**LORETTA LYNN**  
*Don't Make Them Like Daddy (MCA)*



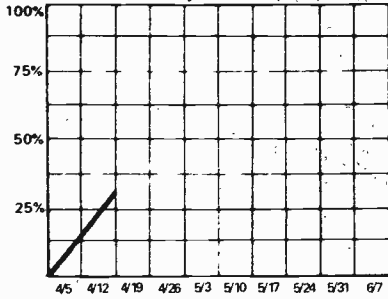
**DOLLY PARTON**  
*I Will Always Love You (RCA)*



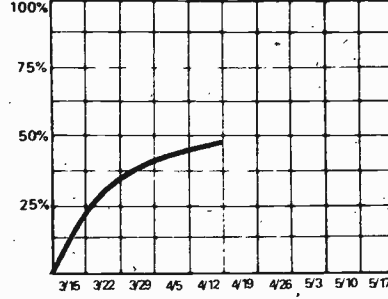
**MOE BANDY**  
*Hating Cheatin' Songs (GRC)*



**MICKY GILLEY**  
*Room Full Of Roses (Playboy)*



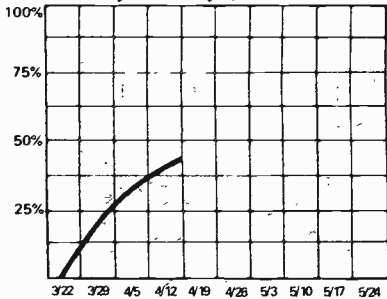
**RONNIE MILSAP**  
*Pure Love (RCA)*



**JOHNNY PAYCHECK**  
*My Part Of Forever (Epic)*



**JOHNNY CARVER**  
*Country Lullaby (ABC)*

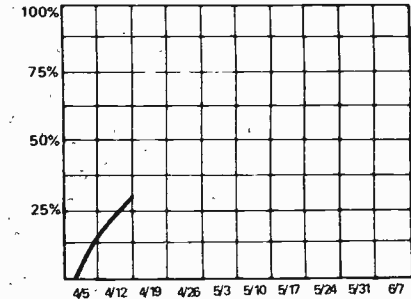


## AUDIENCE APPEAL GRAPHS

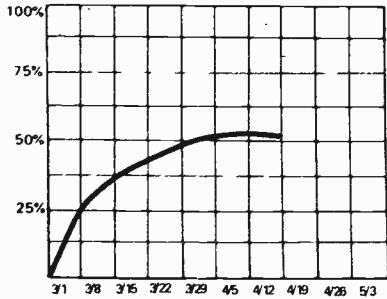
**SIMPLY PUT:** The levels (0% to 100%) represent a record's increasing or decreasing popularity with the "general mass audience" for the format being graphed.

A RECORD reaching 90-100% is a total, across the demographic board smash. A record registering 50% may do so because it's appealing to only a portion of the audience—say, teens, or mostly males. The graphs will also show how a record may "hold on" in audience popularity long after sales have dropped.

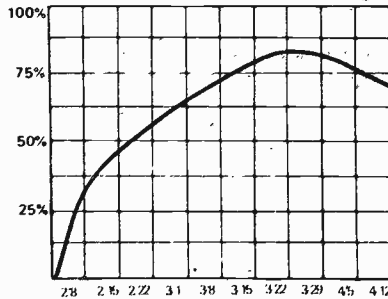
**PETERS & LEE**  
*Welcome Home (Phillips)*



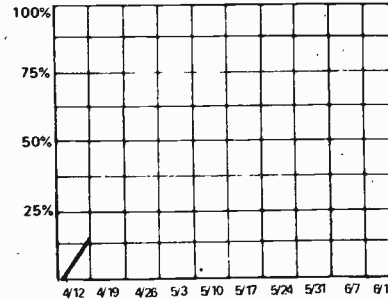
**ROY CLARK**  
*Honeymoon Feeling (Dot)*



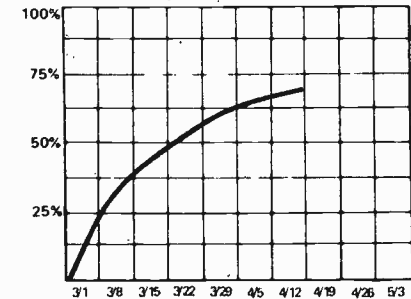
**JACK GREENE**  
*It's Time To Cross That Bridge (MCA)*



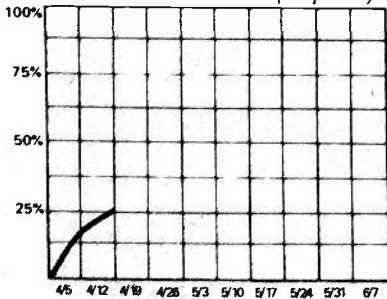
**ANN MURRAY**  
*He Thinks I Still Care (Capitol)*



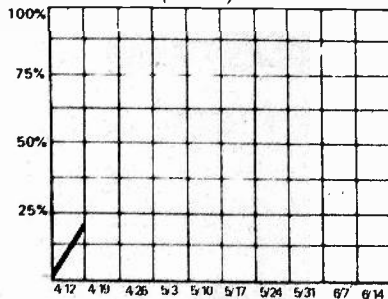
**RAY PRICE**  
*Storms Of Troubled Times (Col)*



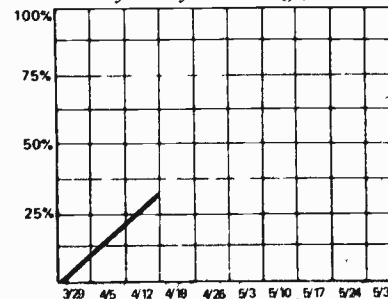
**LA COSTA**  
*I Wanna Get To You (Capitol)*



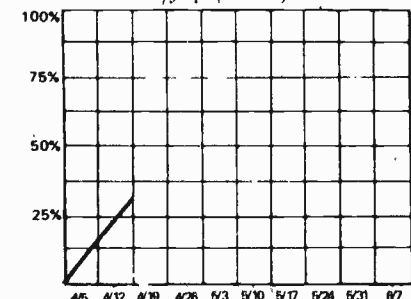
**WAYLON JENNINGS**  
*This Time (RCA)*



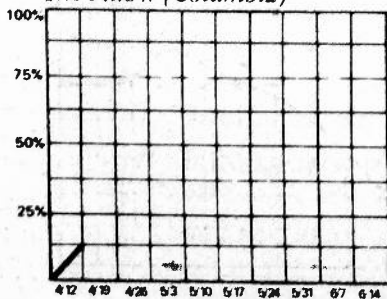
**WILLIE NELSON**  
*Bloody Mary Morning (Atlantic)*



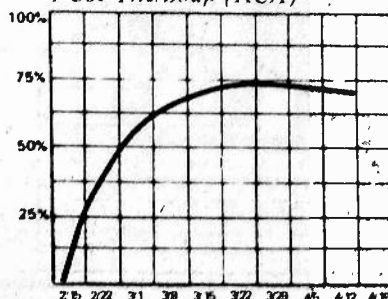
**CHARLIE PRIDE**  
*We Could/flip (RCA)*



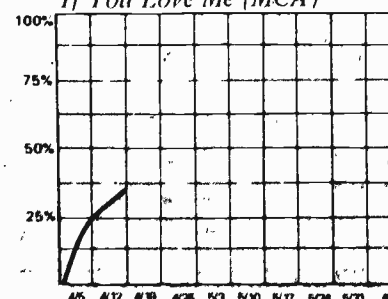
**JOHNNY DUNCAN**  
*The Pillow (Columbia)*



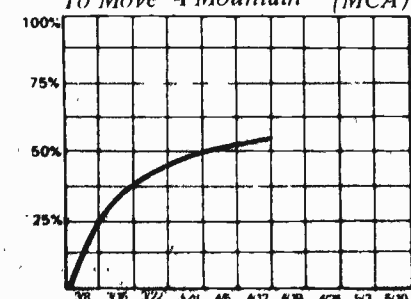
**DICKEY LEE**  
*I Use The Soap (RCA)*



**OLIVIA NEWTON-JOHN**  
*If You Love Me (MCA)*

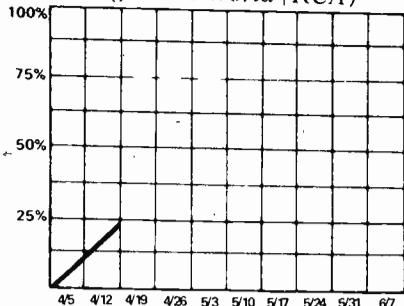


**JEANNE PRUETT**  
*To Move A Mountain (MCA)*



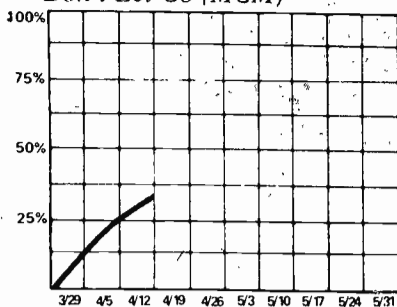
**JIM REEVES**

*I'd Fight The World (RCA)*



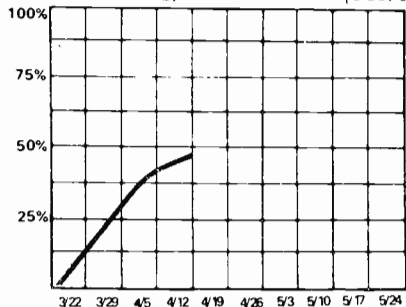
**TILLIS & BRYCE**

*Don't Let Go (MGM)*



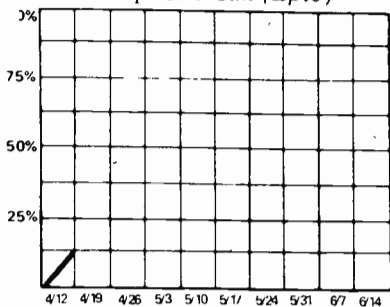
**JOHNNY RODRIQUEZ**

*Something/Born To Lose (Mercury)*



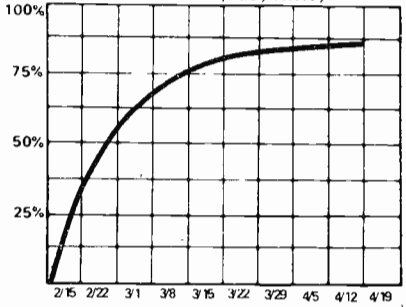
**TINA & DADDY**

*The Telephone Call (Epic)*



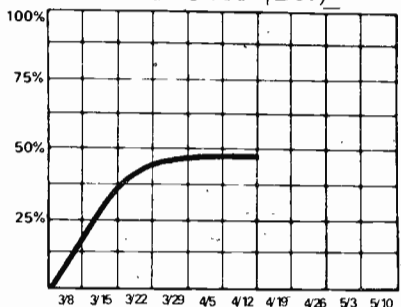
**LINDA RONSTADT**

*Silver Threads (Asylum)*



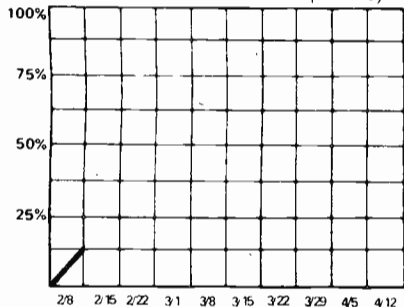
**DIANA TRASK**

*Lean It All On Me (Dot)*



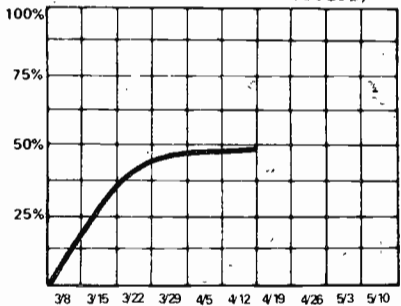
**JOHNNY RUSSELL**

*She Loves Rodeo Man (RCA)*



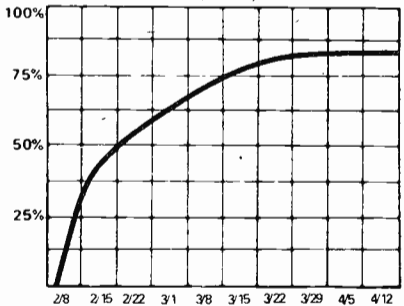
**DOTTIE WEST**

*Last Time I Saw Him (RCA)*



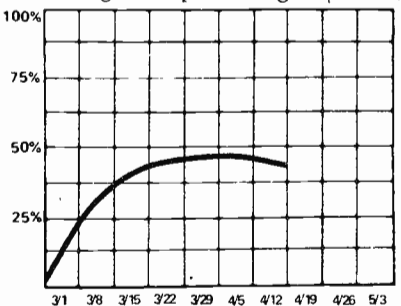
**JEAN SHEPARD**

*At The Time (UA)*



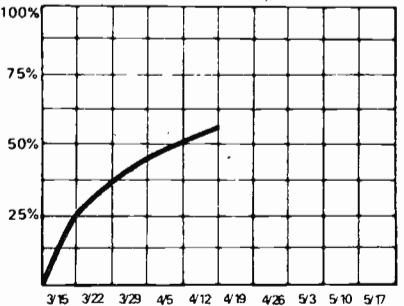
**LITTLE DAVID WILKINS**

*Georgia Keeps Pulling (MCA)*



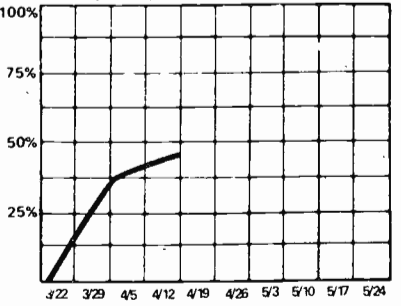
**TERRY STAFFORD**

*Captured (Atlantic)*



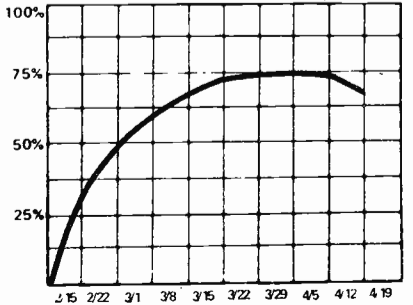
**HANK WILLIAMS, JR.**

*Rainy Night In Georgia (MGM)*



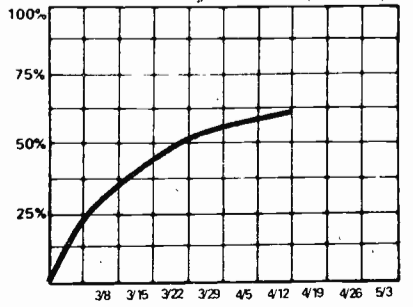
**RED STEGALL**

*I Gave Up Good Morning (Capitol)*



**FARON YOUNG**

*Some Kind Of Woman (Merc.)*



**Bob Pittman**

(Continued from page 1)

parents by controlling the listening pattern of the offspring. Using certain elements that exploit characteristics of these patterns, a station that appeals to teens and sub-teens can also appeal to their parents, more easily the mother than the father.

By the time the average mother has reached 35, her interest in and knowledge of music is quite diminished. This mother will often listen to a station for the simple reason that her child enjoys the music the station plays. The mother's music preference is contingent upon the music preferences of her child. She enjoys the music her child enjoys. From a sociological perspective, it all gets back to the child as being the center of the American mother's life. The child is the mother's purpose in life.

**A FAMILY RADIO STATION?**

A "good clean fun" sounding contemporary station that does not sound as if it condones socially deviant behavior can be a true family station. The station can attract the whole family, thus having a good 12-49 spread. However, the parents do not seem to share the child's listening to a progressive station. This can be attributed to the approach of a progressive station. To the parent, the progressive station represents the "bad influences" of society. To the parent, it's a "Hippie Station." This is why quite often progressive stations do well 12-24, sometimes 12-34, but do extremely poorly 25+ or 35+, as opposed to contemporary stations which can do well 12-49. This concept can be visualized in a diagram.

**CONTEMPORARY STATION**

12-17 18-24 25-34 35-49

one music appeal group

**PROGRESSIVE STATION**

12-17 18-24 25-34 35-49

This tie between age groups is broken

These patterns of listening in family units have implications for

the day-parting of music. Is it beneficial to play "adult music" in "adult time slots"? Or is it more beneficial, in terms of attracting adults, to play teen appeal music in these "adult time slots"? Does programming to adults on a contemporary station actually lose adults? The parent with a teenage or subteen child can often be best attracted by playing music that is popular with the child.

**RESEARCHING RESEARCH**

This listening pattern research also has implications for music research. For example, suppose that a station does call-out music research. Besides the fact that adults, more often than teens, cannot identify by name the songs that they enjoy, often adults do not listen to a station that plays their favorite songs. If a forty year old female is asked what are her three favorite songs, she might name three Frank Sinatra, Johnny Mathis, or Dionne Warwick songs, or maybe some songs from the fifties. If the interview ends here, the researcher might conclude that this person would be attracted to a station that plays these songs. However, if the interview went into a bit of listening pattern research, it might be discovered that this interviewee listens to stations that play music that the offspring in the family enjoys. It's a matter of making the interview thorough.

The entirety of this discussion has only been the surface of the concept of listening patterns in family units. There are many other variables that need to be explained, such as the percentages of ties between parent and child, the distribution of these ties in different socio-economic level families, distribution in different size families, etc. The effects of external variables also needs to be determined. Although this is somewhat time consuming, I sincerely believe that this whole area of listening patterns definitely warrants the time and effort of the research oriented programmer. The reward for such research is an increase in ratings and an increase in 12-49 spread.

**Radio & Records**

News and record information the week it happens...  
not the week after



NAME \_\_\_\_\_

COMPANY \_\_\_\_\_

ADDRESS \_\_\_\_\_

CITY \_\_\_\_\_ state \_\_\_\_\_ zip \_\_\_\_\_

NEW SPECIAL DJ RATES.

ONE YEAR \$130

QUARTERLY \$35

Make check or money order payable to  
**RADIO & RECORDS**, 6255 Sunset Blvd., Suite 719, Hollywood, CA 90028, 213-466-1605

● signifies fastest moving records

# POP/MOR TOP TWENTY

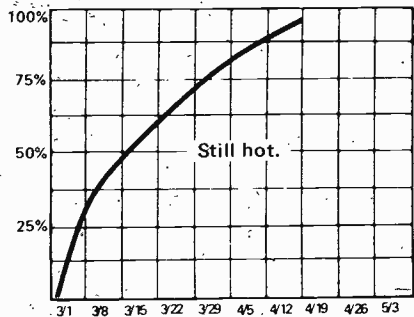
Friday, April 12, 1974

3/29	4/5	4/12	
5	1	1	MFSB/TSOP (Philly Int.)
3	2	2	MARIA MULDAUR/Midnight At The Oasis (Reprise)
19	8	3	JIM CROCE/Love You In A Song (ABC)
8	3	4	MIKE OLDFIELD/Tubular Bells (Virgin)
9	7	5	SAMI JO/Tell Me A Lie (MGM South)
1	5	6	MARVIN HAMLISCH/The Entertainer (MCA)
4	6	7	BILLY JOEL/Piano Man (Columbia)
10	9	8	ALBERT HAMMOND/I'm A Train (MUMS)
12	11	9	HELEN REDDY/Keep On Singing (Capitol)
11	10	10	MAC DAVIS/One Hell Of A Woman (Columbia)
13	12	11	KRIS & RITA/Lovin' Arms (A&M)
18	15	12	JONI MITCHELL/Help Me (Asylum)
17	14	13	RINGO STARR/Oh My My (Apple)
2	4	14	CHARLIE RICH/Very Special Love Song (Epic)
16	16	15	GLADYS KNIGHT/Best Thing That Ever Happened
-	19	16	CAT STEVENS/Oh Very Young (A&M)
-	20	17	GILBERT O'SULLIVAN/Happiness Is Me & You (MAM)
20	18	18	STAPLE SINGERS/Touch A Hand (Stax)
-	-	19	BARBRA STREISAND/All In Love Is Fair (Columbia)
-	-	20	RAY STEVENS/The Streak (Barnaby)

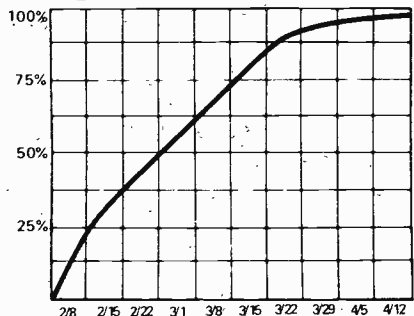
← The top twenty listings reflect SALES

The graphs measure the song's level of audience appeal

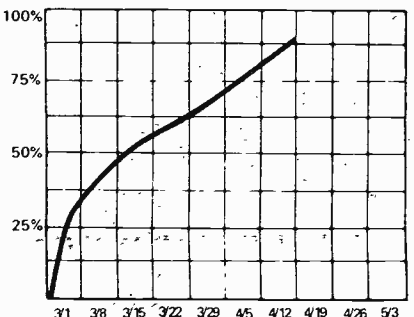
## 1 MFSB



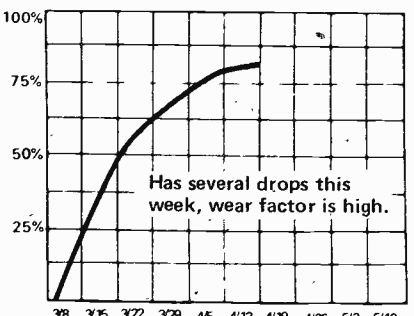
## 2 MULDAUR



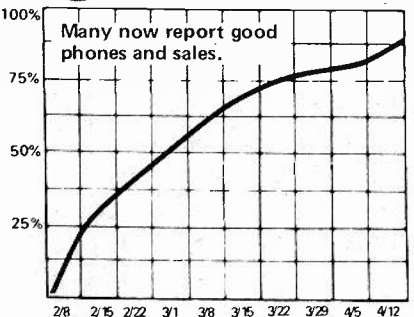
## 3 CROCE



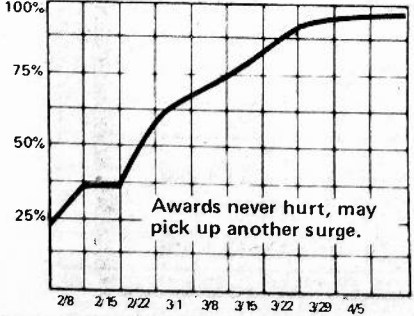
## 4 OLDFIELD



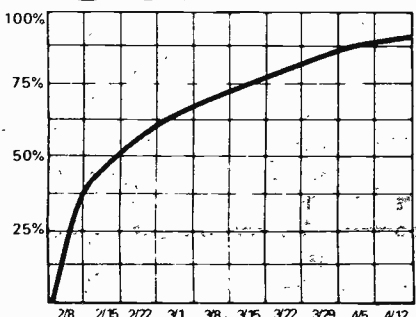
## 5 JO



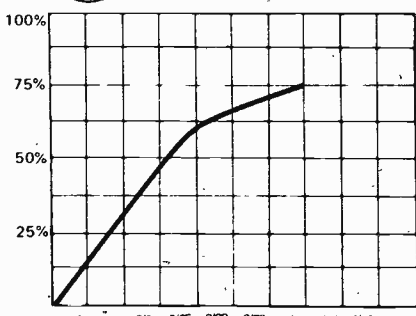
## 6 HAMLISCH



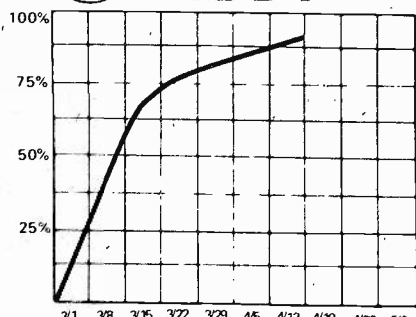
## 7 JOEL



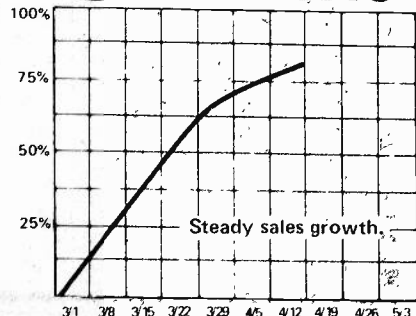
## 8 HAMMOND



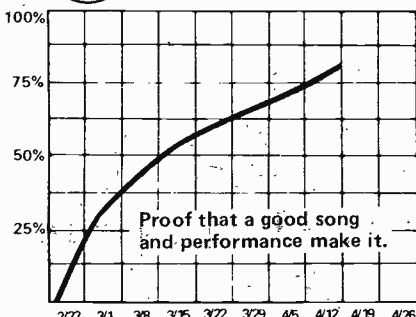
## 9 REDDY



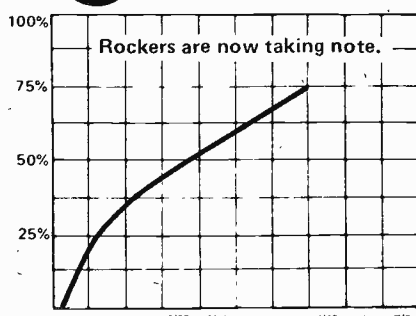
## 10 M. DAVIS



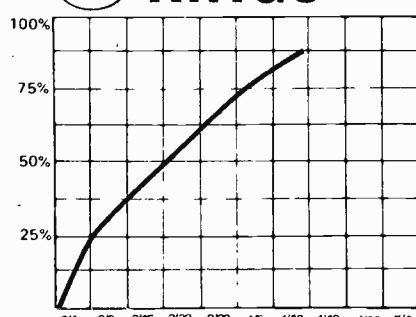
## 11 KRIS & RITA



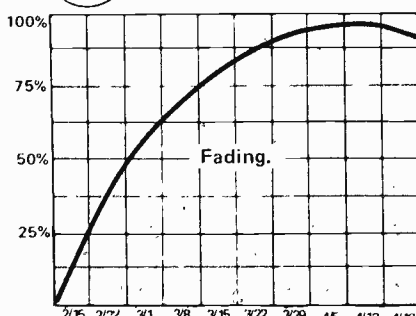
## 12 MITCHELL



## 13 RINGO



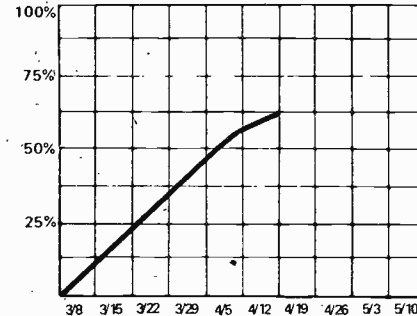
## 14 RICH



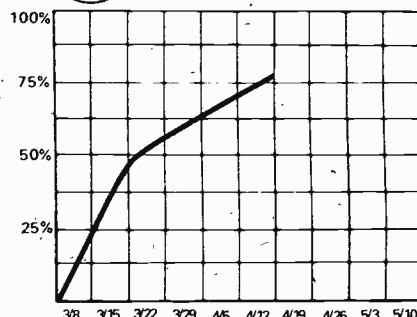
## 15 GLADYS



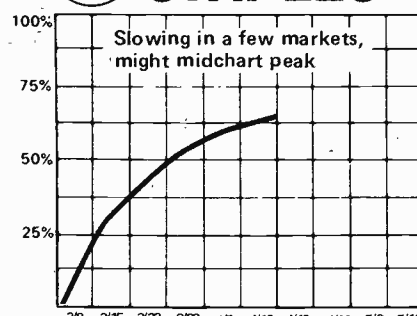
## 16 STEVENS



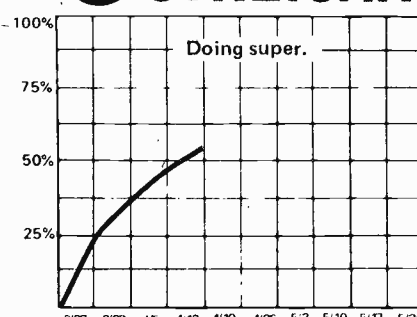
## 17 O'SULLIVAN



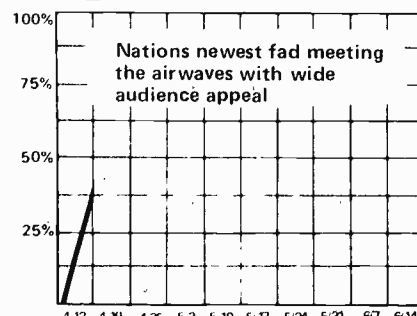
## 18 STAPLES



## 19 STREISAND



## 20 STEVENS



# POP/MOR NOTES by Mike Kasabo



(Music Director, KIIS/Los Angeles)

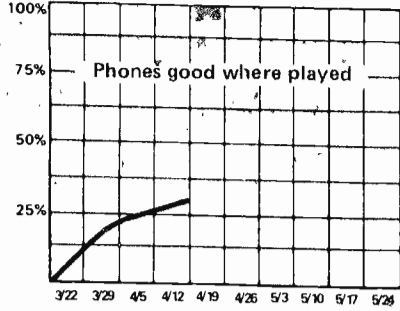
So far I've counted twelve different "streaking" records...and apparently some more on the way. But, it seems that Ray Stevens will run away with the lion's share of airplay with his Barnaby release "The Streak."

Several stations not playing it have asked me this week if it's just a big airplay item and nothing more. Well, I can state that without exception that phones light up and the caller wants to know where he can purchase the record. By nature, novelties don't last too long, so if you have a mind to play it, now would be the time.

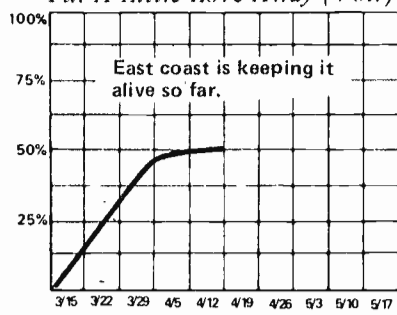
Other records that appear to be picking up nicely are: "Touch A Hand," Staple Singers ... add KVI-Seattle. Standing At The End Of The Line, Lobo on WCBM-Baltimore, WMAL-Washington. "You Won't See Me," Anne Murray just getting out to the stations and on WTAE-Pittsburg, KMPC-Los Angeles, WLW-Cincinnati, WCBM-Baltimore, WBAL-Baltimore. "My Girl Bill," Jim Stafford keeps happening ... hot at WEEI-FM-Boston new at KNBR-San Francisco, KHOW-Denver, WBAL-Baltimore, KRNT-Des Moines. "Sundown," Gordon Lightfoot WLW-Cincinnati, WTAE-Pittsburg, WMAL-Washington, KHOW-Denver. "Forever Young," Joan Baez...seeing more airplay than she's had in a while add WMAL-Washington, WLW-Cincinnati, KVI-Seattle. "I Only Have Eyes For You," Mel Carter charts No. 30 at WSM-Nashville ... on WRIE-Erie, WCBM-Baltimore, KRNT-Des Moines.

LaVerne Drake, music lady at KNBR-San Francisco reports playing "Haven't Got Time For The Pain" from the Carly Simon album ... she also mentioned that the cut would be Carly's new single.

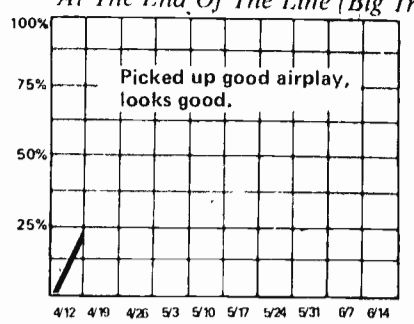
### CASH & CARRY *Tchip, Tchip (Tara)*



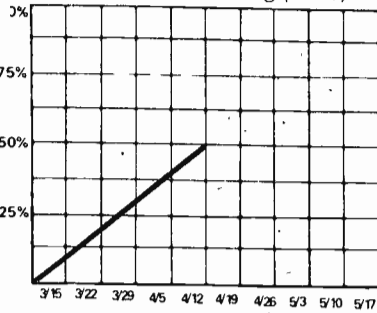
### EMOTIONS *Put A Little Love Away (Volt)*



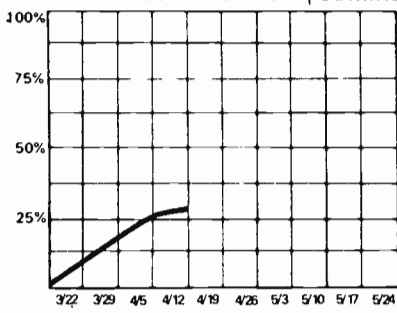
### LOBO *At The End Of The Line (Big Tree)*



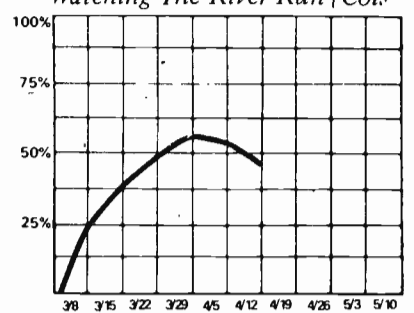
### CHICAGO *Searchin' For So Long (Col.)*



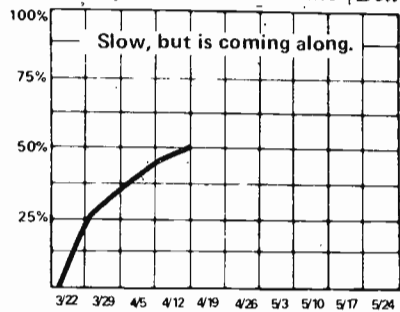
### PERCY FAITH *Hill Where Lord Hides (Columbia)*



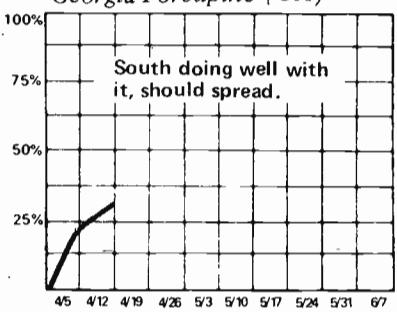
### LOGGINS & MESSINA *Watching The River Run (Col.)*



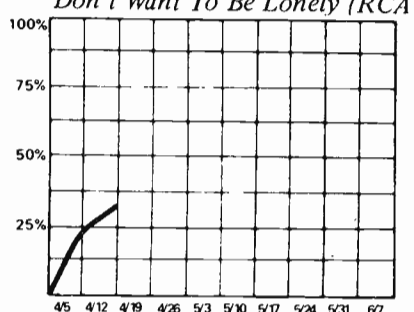
### DAWN *It Only Hurts When Smile (Bell)*



### GEORGE FISCHOFF *Georgia Porcupine (UA)*



### MAIN INGREDIENT *Don't Want To Be Lonely (RCA)*

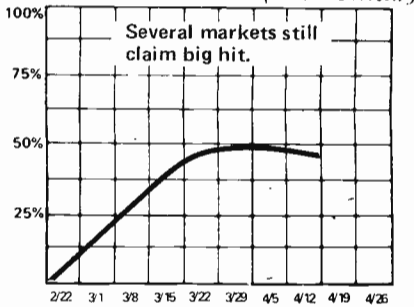


## AUDIENCE APPEAL GRAPHS

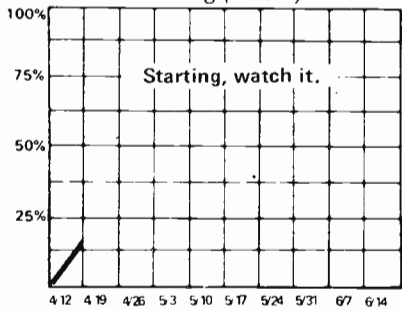
**SIMPLY PUT:** The levels (0% to 100%) represent a record's increasing or decreasing popularity with the "general mass audience" for the format being graphed.

A RECORD reaching 90-100% is a total, across the demographic board smash. A record registering 50% may do so because it's appealing to only a portion of the audience—say, teens, or mostly males. The graphs will also show how a record may "hold on" in audience popularity long after sales have dropped.

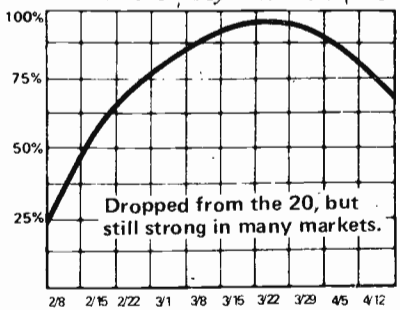
### MAUREEN MCGOVERN *Nice To Be Around (20th Century)*



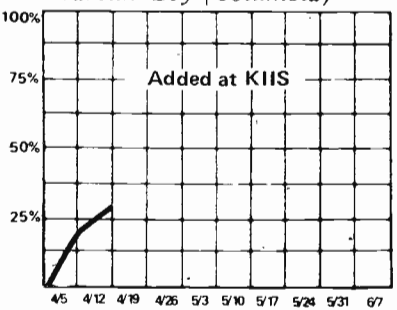
### JOAN BAEZ *Forever Young (A&M)*



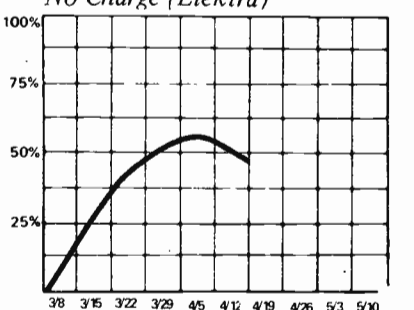
### JOHN DENVER *Sunshine On My Shoulder (RCA)*



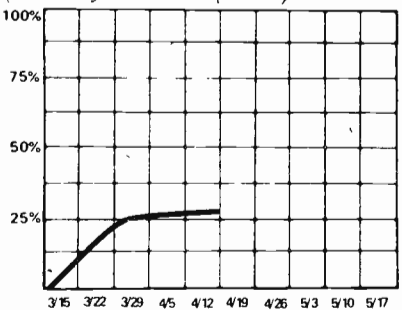
### ART GARFUNKEL *Travelin' Boy (Columbia)*



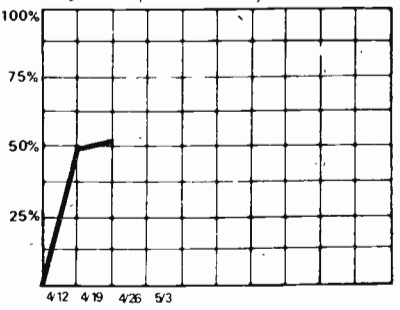
### MELBA MONTGOMERY *No Charge (Elektra)*



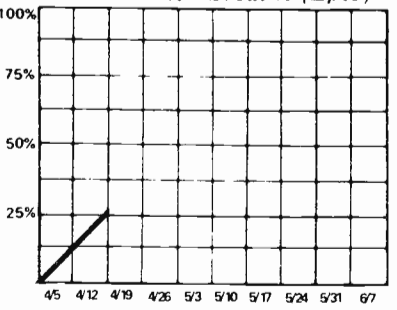
### CARLTON SHOWBAND *Biddy McGraw (RCA)*



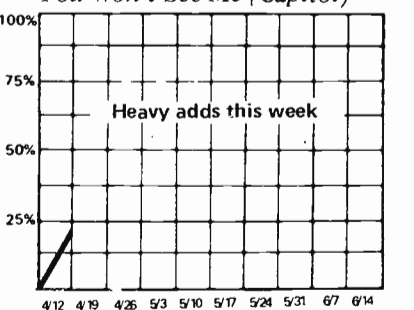
### NEIL DIAMOND *Skybird (Columbia)*



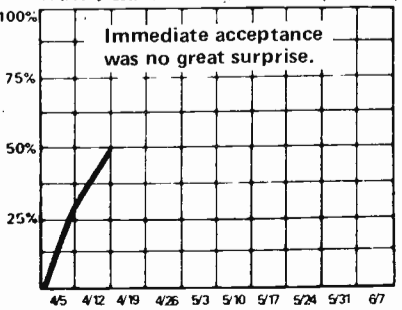
### HOLLIES *The Air That I Breathe (Epic)*



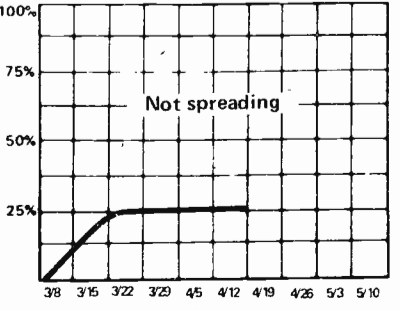
### ANNE MURRAY *You Won't See Me (Capitol)*



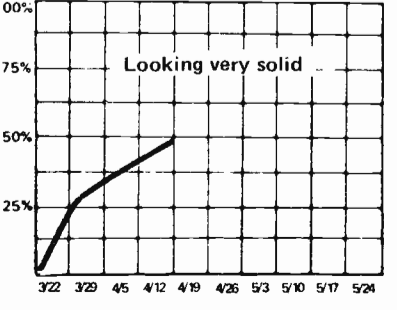
### CARPENTERS *Won't Last A Day (A&M)*



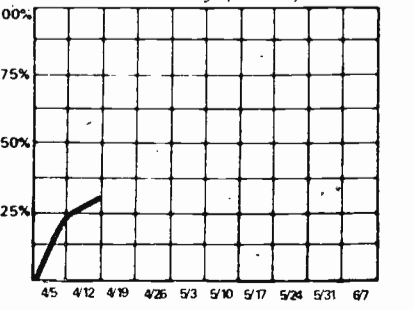
### EL CHICANO *Gringo Mexico (MCA)*



### GORDON LIGHTFOOT *Sundown (Reprise)*

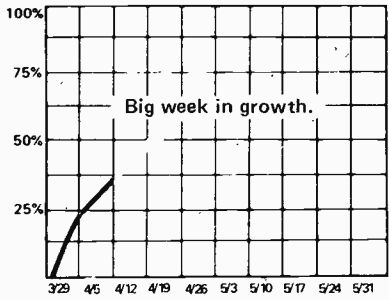


### NEW COLONY SIX *Never Be Lonely (MCA)*

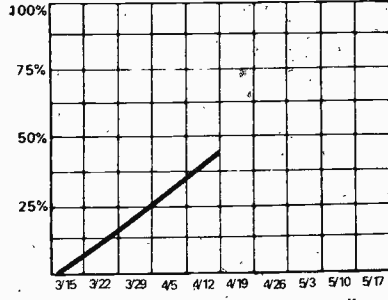


# added this week...

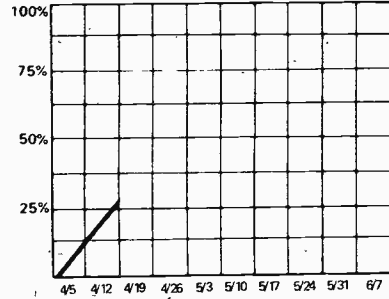
**OLIVIA NEWTON JOHN**  
*If You Love Me (MCA)*



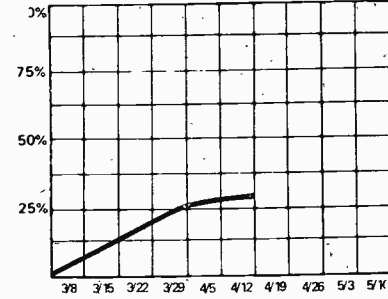
**STYLISTICS**  
*You Make Me Feel New (Avco)*



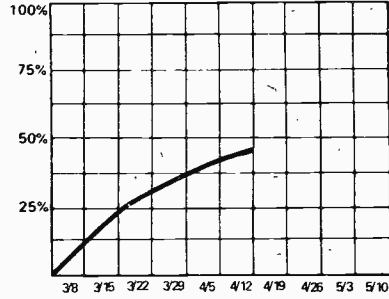
**NILSSON**  
*Daybreak (RCA)*



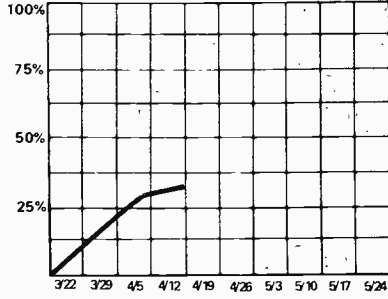
**TEMPTATIONS**  
*Heavenly (Gordy)*



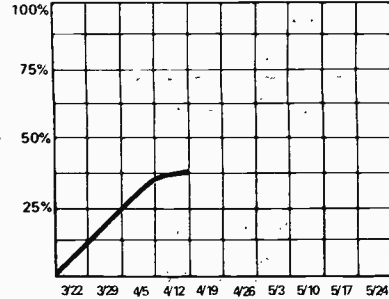
**POINTER SISTERS**  
*Steam Heat (Blue Thumb)*



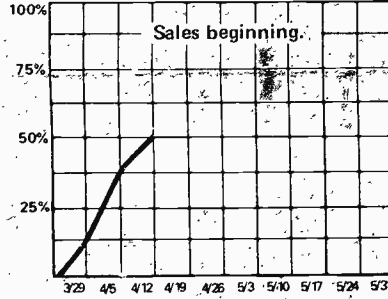
**FRANKIE VALLI**  
*Hickory (Motown)*



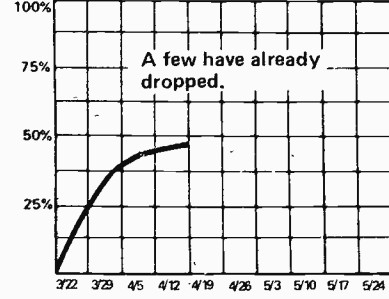
**COZY POWELL**  
*Dance With The Devil (Chrysalis)*



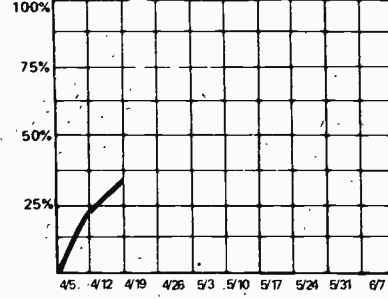
**VOGUES**  
*Prisoner Of Love (20th Century)*



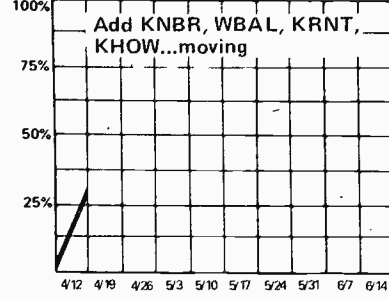
**FRANK SINATRA**  
*Bad Bad Leroy Brown (Reprise)*



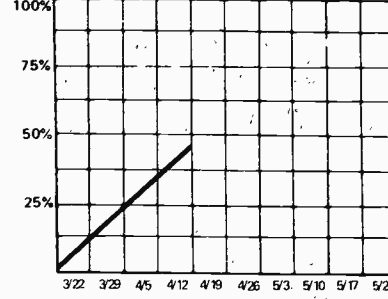
**STEVIE WONDER**  
*Don't You Worry (Motown)*



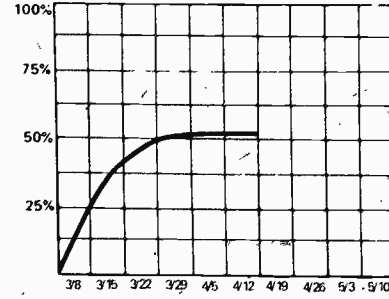
**JIM STAFFORD**  
*My Girl Bill (MGM)*



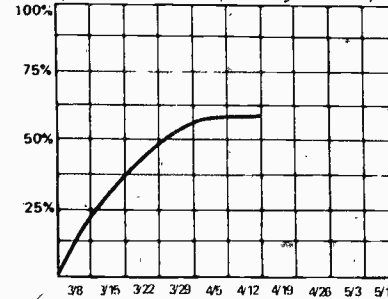
**LARRY WEISS**  
*Rhinestone Cowboy (20th)*



**BW STEVENSON**  
*Look For The Light (RCA)*



**AL WILSON**  
*Touch and Go (Rocky Road)*



**WCBM-BALTIMORE**

Lobo  
Anne Murray  
Paul McCartney  
Vogues  
Temptations  
Mel Carter

**WBAL-BALTIMORE**

Florence Warner  
Gordon Lightfoot  
Jim Stafford  
Nilsson  
Glen Yarborough  
Carpenters  
Anne Murray  
Mary Travers  
DROPS

**WEEI-FM-BOSTON**

Cashman & West ("Lady" side)  
DROPS  
Anne Murray  
WLW-CINCINNATI  
Gordon Lightfoot  
Isaac Hayes  
Rob Hegel  
Casey Kelly  
Joan Baez  
Tijuana Brass  
Todd Rundgren  
Anne Murray  
DROPS  
Stealers Wheel  
Sammy Davis  
Dawn  
Love Unlimited

**WEEI-FM-BOSTON**

Cashman & West ("Lady" side)  
DROPS  
Anne Murray

**WEEI-FM-BOSTON**

Cashman & West ("Lady" side)  
DROPS  
Anne Murray  
WLW-CINCINNATI  
Gordon Lightfoot  
Isaac Hayes  
Rob Hegel  
Casey Kelly  
Joan Baez  
Tijuana Brass  
Todd Rundgren  
Anne Murray  
DROPS  
Stealers Wheel  
Sammy Davis  
Dawn  
Love Unlimited

**KHOW-DENVER**

Gordon Lightfoot  
Jim Stafford  
DROPS  
Mike Oldfield  
Sammy Davis  
Pointer Sisters

**KRNT-DES MOINES**

Olivia Newton John  
Carlson & Durio  
Mel Carter  
Jim Stafford

**DROPS**

Hall & Oates  
Addrisi Bros.  
Bobby Bare

**WCAR-DETROIT**

Olivia Newton-John  
Chicago  
Garfunkel  
Frankie Valli  
DROPS  
Mike Oldfield  
Temptations  
Neil Diamond  
Cliff DeYoung  
Main Ingredient  
Stealers Wheel

**WRIE-ERIE**

Mary Travers  
Barbra Streisand  
2nd Chapter Of Acts  
Woody Herman  
Stevie Wonder  
Mel Carter  
Carpenters  
Cleo Lane  
DROPS  
Aretha Franklin  
Ring (16)  
Love Unlimited Orc.  
Don McLean  
Englebert Humperdinck

**KMBZ-KANSAS CITY**

Olivia Newton-John  
Vicki Britton  
Crowbar  
Waylon Jennings  
DROPS  
Bobby Bare  
Stealers Wheel

**KMPC-LOS ANGELES**

Sonoma  
Ray Stevens  
Tower Of Power  
Annie Murray

**WINZ-MIAMI**

DROPS  
Ray Price  
Zell Black  
Don McLean  
B.W. Stevenson  
Chicago  
Mac Davis  
Tom Jones  
Peggy Lee

**KOL-SEATTLE**

Stevie Wonder  
Loggins & Messina  
Dawn

**WIP-PHILADELPHIA**

Diana Ross  
Hollies  
Paul McCartney (Nite)  
DROPS  
Blue Swede

**WTAE-PITTSBURG**

Gordon Lightfoot  
Anne Murray  
Bill Haley  
Ray Stevens  
DROPS  
Terry Jacks  
Redbone

**KMEN-SAN BERNARDINO**

Mac Davis  
Todd Rundgren  
Carpenters  
DROPS  
Bee Gees  
Stealers Wheel  
Cliff DeYoung

**KGIL-SAN FERNANDO**

Bobby Goldsboro  
Tony Christie  
Love Unlimited Orc.  
Peppers  
Jack Jones

**KNBR-SAN FRANCISCO**

Suzy Maddox  
Bobby Gosh  
Donovan  
Love Unlimited Orc.  
Carly Simon  
Jim Stafford  
Ray Stevens  
Ann Peebles  
Paul McCartney  
Patti Page  
DROPS  
Woody Herman  
Frank Sinatra  
Elvis  
Digby Richards

**WMAL-WASHINGTON**

Carpenters  
Vogues  
Lobo  
Glen Yarborough  
Gordon Lightfoot  
Little Anthony  
Joan Baez  
B.W. Stevenson  
Mac Davis  
DROPS  
Diana Ross  
Mocedades  
Cliff DeYoung  
Tom T. Hall  
M. McGovern

**KIIS-LOS ANGELES**

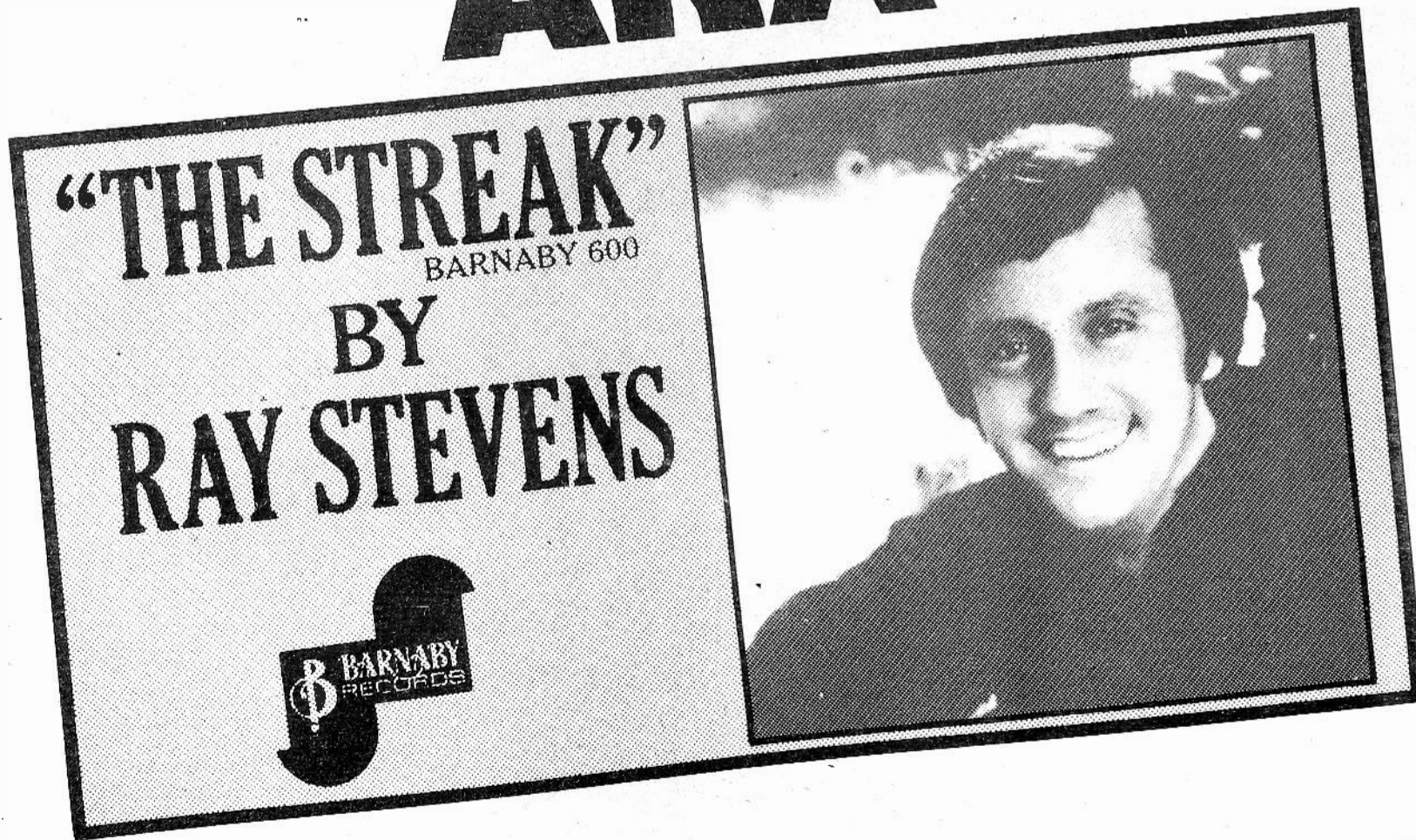
Larry Weiss  
Garfunkel  
Ross & Gaye  
DROPS  
Spinners  
Cliff De Young  
Barry White

## ALBUMS

<b>JIMMY BUFFETT</b> Living And Dying In 1/2 Time (Dunhill) CUT: Pencil Thin Mustache	<b>ANNE MURRAY</b> Love Song (Capitol) CUTS: Real Emotion	<b>HARRIET SCHOCK</b> Hollywood Town (20th Century) CUTS: Hollywood Town, Ain't No Way To Treat A Lady
<b>CHICAGO</b> Chicago VII (Columbia) CUTS: Call On Me, Wishing You Were Here	<b>HELEN REDDY</b> Love Song For Jeffrey (Capitol) CUTS: You And Me Against The World, You're My Home, That Old American Dream	<b>EARTH, WIND &amp; FIRE</b> Open Our Eyes (Columbia) CUTS: Feelin' Blue
<b>TERRY JACKS</b> Seasons In The Sun (Bell) CUTS: Concrete Sea, Love You Too	<b>CHARLIE RICH</b> Very Special Love Song (Epic) CUTS: Pretty People, Go Somewhere And Love	<b>B.W. STEVENSON</b> Calabasas (RCA) CUTS: Anna Lisa, Roll On, Bit Of Understanding.
<b>BILLY JOEL</b> Piano Man (Columbia) CUT: Travelin' Prayer	<b>SEALS &amp; CROFTS</b> Unborn Child (WB) CUTS: King Of Nothing, Dance By The Light	<b>BARBRA STREISAND</b> The Way We Were (Columbia) CUT: My Buddy
<b>GLADYS KNIGHT &amp; THE PIPS</b> Knight Time (Soul) CUT: Between Her Goodbye and My Hello	<b>CARLY SIMON</b> Hotcakes (Elektra) CUT: Misfit Older Sister	<b>BARRY WHITE</b> Rhapsody In White (20th Century) CUTS: Barry's Theme
<b>MOCEDADES</b> Eres Tu (Tara) CUT: Dime Senior	<b>PAUL SIMON</b> Live Rhymin' (Columbia) CUTS: Sounds of Silence, Boxer, Loves Me Like A Rock	<b>PAUL WILLIAMS</b> Inspiration (A&M) CUT: Dream Away

# There's only ONE Ray Stevens

## AKA



**"THE STREAK"**  
BARNABY 600  
BY  
RAY STEVENS

**BARNABY RECORDS**



DISTRIBUTED BY CHESS/JANUS RECORDS, 1301 AVENUE OF THE AMERICAS, NEW YORK, N.Y. 10019.