

Radio Guide

Radio Technology for Engineers and Managers

April 2007

Console Design That Goes Back to the Future



Inside

Back to the Future Console Design

Radio Guide

The Dees Digital Console

Page 4

The whole complex was to consist of five studios, three of which were to be used for Rick Dee's new morning show. The other two would be a production studio for Rick's weekly countdown show and a rental studio for any visiting radio shows.

The studio suite was to be designed around the SAS 32KD digital audio network and the Rubicon control surfaces for all of the studios. The one exception was Rick's main studio. Originally a new analog audio console with rotary pots was purchased for Rick to replace his beloved RCA BC 7A console that he had been using for the last 20 years, only to learn later that a different approach for this studio would be required.

As it turned out, the path to the new studios led directly to the past.



TOP-VALUE FM MONITOR

MODEL 531 - \$2,700

 **Inovonics**
1305 Fair Ave. • Santa Cruz, CA 95060
TEL: (831) 458-0552 • FAX: (831) 458-0554
www.inovon.com • e-mail: info@inovon.com

Visit www.inovon.com
for full technical details.

Don't Get Zapped!



PowerClamp surge suppressors clamp lightning-induced powerline transients to within a few volts of normal AC voltage!

PowerClamp will pay for itself by reducing expensive damage to transmitter site equipment caused by powerline spikes and surges.

Protect your transmitter and **Stay On The Air** with **PowerClamp!**



DISTRIBUTED BY
**Broadcasters
General Store**

www.bgs.cc

1-352-622-7700



News • Talk • Sports • Music
BEST Satellite Automation in the Industry!



- Simultaneously play & record (PCM, MP2/MP3)
- 24 liner decks for a live, local sound
- Watch windows for each commercial break
- Clock synchronization for perfect joins!
- Powerful features allow for complete control
- Pause & resume automation for live events
- Interfaces with all major traffic & billing software
- Buffered liners play correctly each time
- Control CDS³² SAT remotely by phone or Internet
- Automate syndicated and local sports
- 24/7 product support available from the company made famous for fast & friendly support

"...our Best decision to date was the installation of Pristine's CDS³² satellite automation system."
William Aisworth, Owner
WSHO, New Orleans, LA

Also available:

- CDS³² music on hard drive
- Summit Traffic & Billing
- MusicPlus Scheduling
- Voice Tracking
- Digital Audio Logger

*10% off with this ad

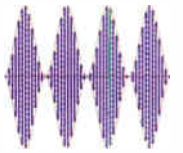
**NAB
N7334**

See you there!



Pristine Systems

**25 years of
Broadcast Automation**



Back to the Future Console Design 4	<i>The Dees Digital Console</i>
Transmission Guide 8	<i>Phase Rotators and Why You Need Them</i>
Processing Guide 12	<i>Part 3: Talking with Today's Masters</i>
Studio Guide 18	<i>Blast From Past a Learning Experience</i>
Operations Guide 20	<i>Wanted: More HD Ears</i>
Tech Tip 20	<i>Adding an Extra Button Reduces Surprises</i>
Field Guide 22	<i>The Davicom MAC Transmitter Remote Control</i>
Audio Guide 24	<i>Audio File Standards for the Broadcast Industry</i>
The Worst I've Ever Seen 30	<i>Going Ice Fishing for an ATU</i>
Radio History 32	<i>Serendipity in the South: The WBT Story</i>
Heavy Metal 40	<i>The Transmitters That Lit Up the Dial</i>
Service Guide 44	<i>Radio Equipment, Products, and Services</i>

Radio Roundup 47	<i>Radio Conventions and Events Datebook</i>
Advertiser Info 47	<i>Advertiser Website Information</i>
Radio Engineering Services 47	<i>Radio Contract and Consulting Services</i>

Cover Photo

The new Rick Dees studio complex in Burbank, California

Radio Guide

Volume 15 – Issue 4

PO Box 20975, Sedona, AZ 86341
Phone: 928-284-3700 Fax: 866-728-5764

Ray Topp (Publisher)

Email: radio@rconnect.com

Barry Mishkind (Editor)

Email: editor@radio-guide.com

Home Page/Archives: www.radio-guide.com

Tech Manuals: www.radiogearguide.com

Classified Ads: www.radio-classifieds.com

Radio History: www.olderadio.com

URL Summary: www.radio-guide.com/URL.htm

Radio Guide, ISSN 1061-7027, is published monthly, 12 times a year, by Media Magazines Inc., PO Box 20975, Sedona, AZ 86341. Radio Guide is copyright 2007, Media Magazines Inc., and may not be copied, reproduced, or stored in any format, without the permission of the publisher.

GOOD NEWS/BAD NEWS

As we prepare to head off for the annual NAB Spring Show, the FCC is readying its Spring "gifts" to the industry. Of course, you know the old line: "There is good news and bad news, which do you want first?"

The good news: FCC is finally authorizing full-time IBOC operations on AM channels. FM multi-channel and datacasting operations no longer are "experimental." And the first window in a long time for NCEFM filings will open. At least it appears there is good news.

Broadcasters have been waiting for these actions. For example, frustrated AM broadcasters, forced to drop their digital carriers – and improved audio – each day at 6:00 PM, wondered what good getting some sonic "parity" with FM meant if they could not operate consistently, 24/7.

But then the other shoe drops. Little attention was given to warnings of potential interference, much less equity. If a daytimer is not allowed a single Watt at night, how can the band survive stations tossing as much as 1250 Watts of signal – or more – on adjacent channels? No one seems to know. Finally – we should find out.

Meanwhile, NCEFM applicants worry about competing with entities filing hundreds or thousands of applications. Some tiny stations are in danger of being bumped off the dial by "creative" applications. LPFM operators are wandering around, hoping for any opportunity to serve their area. And what is this deal of issuing a waiver and STA so a pirate can operate a station?

Perhaps it is something in the DC water. A lot of folks are scratching their heads to determine which is the good news and which is the bad news. As the year progresses, we hope the FCC offers us some clarity on these matters.

LET'S HAVE LUNCH!

For those of you en route to Las Vegas for the NAB, or those of you reading this there, we hope to see you at Noon on Tuesday (17th) for our annual Lunch Gathering at the Riviera Hotel Buffet restaurant. – Radio Guide –

Broadcast Software

1-888-274-2721
www.bsiusa.com

Simian - Radio Automation

Fully automated or live assist play out software.



Suitable for radio stations, web casts, music-on-hold & retail outlets.

Complete PC Systems

Ready to run, broadcast ready or retail play out systems.



Optional music, advert & promo scheduling software and remote control hardware.

AudioScience Sound Cards

Multi-output, pro-quality sound-cards and tuners.



On-card processing and memory for glitch free playback & recording.

SkimmerPlus Audio Logging

Advanced radio station or call-center logging with remote web playback.



Satisfies and exceeds the output logging requirements in many countries.

Broadcast Software International
503 E. 11th Avenue
Eugene, OR 97401 USA
Direct: 541-338-8588
Fax: 541-338-8656
www.bsiusa.com sales@bsiusa.com



Back to the Future Console Design

The Dees Digital Console

by Barry Victor

In August of 2006 I was asked to be the Project Manager for a new studio complex being built in Burbank, California. The facility was being constructed for the well-known broadcaster, Rick Dees.

The whole complex was to consist of five studios, three of which were to be used for Rick's new morning show. The other two would be a production studio for Rick's weekly countdown show and a rental studio for any visiting radio shows.

The studio suite was to be designed around the SAS 32KD digital audio network and the Rubicon control surfaces for all of the studios. The one exception was Rick's main studio. Originally a new analog audio console with rotary pots was purchased for Rick to replace his beloved RCA BC-7A console, one he has been using for the last 20 years, only to learn later that a different approach for this studio would be required.

Still, as it turned out, the path to the new studios did indeed lead directly to the past.

A STAR RETURNS

In September 2006, Emmis Broadcasting changed formats on KZLA, their Los Angeles country radio station, to KMVN, Movin' 93.9, with a rhythmic dance format. They also brought Rick Dees back to Los Angeles morning radio after a three-year absence.

Unfortunately, Rick's new studios were not going to be ready until early 2007, so we had to work with Emmis' LA engineers to modify one of the production studios to get Rick's new morning show on-line in the interim. Faced with this task at the beginning of September 2006, we had three (3!) weeks to configure a temporary studio for an on-air date of September 25, 2006.

Rick had an RCA BC-7A console in storage – updated with solid-state electronics – which he would have liked to commission. But given that today's radio facility requires much more interfacing to ancillary devices it would have taken weeks to piece together a functional system around the old RCA. Instead, we took a modern day analog, rotary-pot console that had been purchased earlier and built a retro studio with Rick's familiar cart machines and instant replays, interfacing it to an existing BMX digital console in the ex-KZLA facility.

Rick Dees' debut on KMVN from the temporary studio was right on schedule. However, as much as Rick liked his rotary pot console, it was *not* his RCA BC-7A with the ergonomic design to which he had grown accustomed. He needed it to be more like the old RCA.

BACK TO THE FUTURE

Several discussions took place with Rick to decide what we would build into Rick's main studio at the new facility. The shortfalls of his new analog console and the lack of interfacing of the old RCA console required us to look into other alternatives.

Based on our meetings, I envisioned building a custom console that would look and feel as much as possible like the old RCA console. At the same time, the console had to function as a digital control surface on the SAS 32KD digital audio network in order to handle the many features, functions and flexibility required for today's radio facility. It had to have the retro/ergonomic design and function of the RCA console that Rick loves.

Since the new facility was to be built around the SAS 32KD digital audio network and Rubicon control surfaces, I knew right away how to realize my new digital/retro console: Go to SAS.

READY TO ROCK AND ROLL

Al Salci, Vice President of SAS, was immediately enthusiastic about the project and we went to work right away, since Rick's new studios were scheduled to be finished in January 2007. This gave SAS three months to design, construct, and deliver a working console.

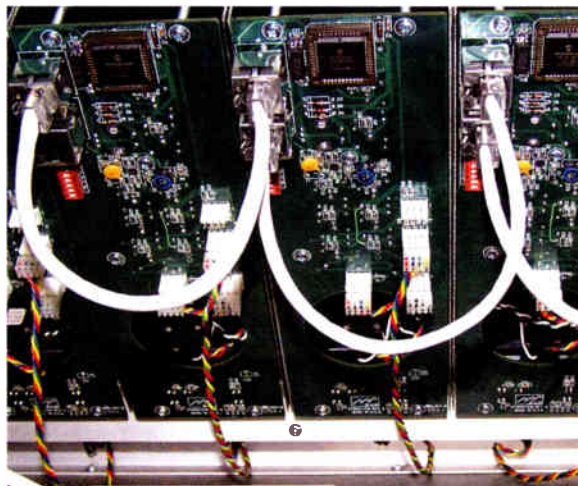
Rick, Mike Hagans of SAS, and I met to set the initial design criteria, and it was at these conferences with SAS that the new *Dees Digital Console* control surface was born.

There were several "must have" requirements that Rick insisted upon for the console. Some of these requirements included rotary level controls (of course) with two-inch knobs, a single button for module On/Off, detent cue with a lighted indicator, and analog meters. The input modules were to have a vertical slope of around 70 degrees.

Additionally Rick wanted a large shelf area above the input modules with a lip to hold copy. Analog meters were a must for the look and feel of the adored RCA console. For the modern functionality, a digital display readout on each fader channel would indicate the source selection from the A and B buttons or the external source selection for each module, giving a completely configurable console just as found in today's digital control surfaces.

BUILDING ON A GOOD FOUNDATION

The SAS Rubicon SL input module circuit topology was repackaged for the *Dees Digital Console*. The design required a new PC board (printed circuit) that was fitted with a rotary potentiometer and an "off" detent for the cue actuation.



Repackaged Rubicon input modules were adapted for the rotary pots.

The Rubicon SL circuitry was a perfect fit for the project and that helped to ensure a timely delivery. Additionally, the SL module software could be used for the new input module with very little changes to the mature firmware that SAS has been delivering for quite some time.

Each module channel is three inches wide to accommodate the two-inch knobs. The console enclosure was to be fitted with 15 input modules and a monitor module which put the overall width of the console at 50 inches. The height is just less than 13 inches, complete with meter bridge, which allowed for a two-inch deep cut into the furniture table top. The height limit was important since a higher profile would restrict the view to the guests on the other side of the console.

BRINGING IT TO LIFE

At this point I had a full-size print of the control surface and the meter bridge made. I attached it to art board and made a life size mockup of the console for Rick to review and approve. A few dimensions were adjusted, along with a tweak or two on the slope of the front surface, before the final sign off.

With the design now pretty much set, SAS's team went to work. Ed Fritz, President of SAS worked with me in regards to the details of the console enclosure. Rick wanted a natural aluminum finish on the console, a wood trim for the sides that would match his new custom furniture in the studio, and – of course – analog meters.

I found a company that specializes in recreating knobs for antique radios. Located in Los Angeles, Larry Bordanaro of Old Time Replications fabricated a replica of the bakelite two-inch knobs using an original knob from a 1952 vintage RCA board as a sample. He made us exact copies in five different colors, using modern materials.



The fader knobs have the "look and feel" of the classic consoles.

Easy to work with and a novel concept, Larry provided timely and economical antique type knobs with modern molds and plastics. You may check them out at www.antiquradioknobs.com. The knobs readily got the Rick Dees' "seal of approval."

"FULLY LOADED"

Some highlighted features of the new *Dees Digital Console* are as follows:

- Individual module for each fader input channel.
- Fifteen total input modules.
- Each module has an A and B input select with three output bus select buttons, (2 Program, 1 Offline).
- Each module has an alphanumeric display to indicate the current source assigned to the channel and for other supplementary channel parameters such as Mode, Pan, and Phase etc.
- Each module has the ability to select any audio source available within the facility using the SAS 32KD digital audio network system.
- Each module has a lighted-detent cue position.
- The monitor panel has separate source selection for headphones and control room monitors and provides individual audio level controls for talkback, cue, control room monitors, and headphones.
- There are two analog stereo meters.
- The console houses an auto-start timer and a separate timer with manual controls
- There is a time-of-day clock
- An assignable eight-button panel for talkback to anywhere within the facility.
- Last but not least, by using the SAS 32KD digital audio network, an unlimited number of mix-minus lines can be automatically generated for as many destinations as required.



It looks good, it "feels" good.

LOOK MA, NO MOTHERBOARD!

One unique aspect of this control surface worthy of a mention is that all of the modules are installed into the enclosure much like turret modules. There is no motherboard for the modules to plug into. CAT 5 cables with RJ45 connectors are used to interconnect the RIO DSP engine system to modules 1 thru module 16 in a "daisy chain" method.

(Continued on Page 6)

Internet remotes...
there's been talk.



➔ **Live from 37,000 Feet—No kidding—Live Broadcast from a Lufthansa flight!**



... successfully aired his three hour talk show from a commercial airplane [using ACCESS] at 37,000 feet on a regularly scheduled flight between Frankfurt, Germany and New York, US.

Peter Greenberg—Host of the syndicated radio program Travel Today

For the complete story visit
<http://remotebroadcasts.blogspot.com>

➔ **Radio Free Asia—Live from the Himalayas**



"The results [with ACCESS] were especially reliable considering that Dharamsala has one of most "problematic" Internet infrastructures that we have come across." — David Baden, Chief Technology Officer Radio Free Asia

For the complete story visit
<http://remotebroadcasts.blogspot.com>

➔ **Ski Mountain Remote**



This picture, really demonstrates what ACCESS is about. This product truly has the ability to cut the wires.

For the complete story visit
<http://remotebroadcasts.blogspot.com>

➔ **JAMN 94.5—Walk for Hunger**



"ACCESS was used on the air exclusively for JAMN945 at this one. It was all over EVDO with a tremendous amount of active cell phones in the area. The ACCESS was connected to the Verizon wireless Broadband...

For the complete story visit
<http://remotebroadcasts.blogspot.com>

Put Comrex On The Line.

Toll Free: 800-237-1776 • www.comrex.com • e-mail: info@comrex.com
19 Pine Road, Devens, MA 01434 USA • Tel: (978) 784-1776 • Fax: (978) 784-1717

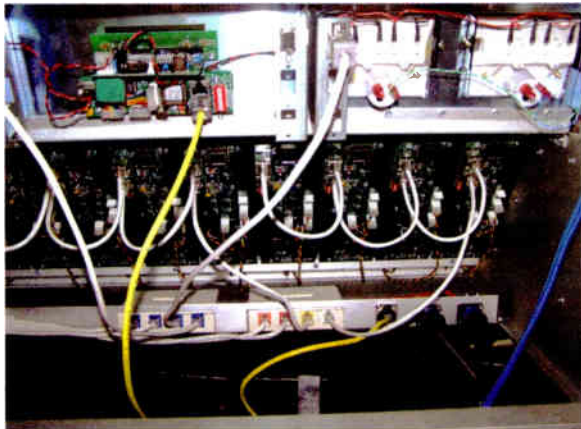
COMREX

Back to the Future Console Design

The *Dees Digital Console*

Continued from Page 4

The CAT 5 cable contains data and power “to and thru” each module. This is a unique yet simple system design. This same concept is accomplished in the Rubicon and Rubicon SL except that the CAT 5 cabling is replaced with a motherboard within the Rubicon enclosures (or Tub).



The console does not use a motherboard. The modules are interconnected and linked to the SAS 32KD.

The console utilizes an SAS RIO audio chassis that provides 32 signal inputs and 32 signal outputs complete with a DSP engine and is installed in the equipment bay of the control room. The RIO chassis also houses the serial ports that connect to the control surface using a standard CAT 5 cable with RJ45 connectors (daisy chained as mentioned above).

ANALOG OR DIGITAL ... OR BOTH

The RIO can be fitted with analog or digital IO or a combination of either signal domain. We decided on a 50% digital and 50% analog input and output configuration. This gave us 16 analog channels in and out which can be configured mono or stereo, and eight stereo digital channels in and out. RJ21 (25 pair) connectors are used for all audio-signal I/O, and connects directly to a RJ21 on Krone blocks.

All of the local media audio signals are punched down to the Krone blocks with short cable jumpers. The RIO connects to the centrally located SAS 32KD with a standard CAT 5 cable (RJ45) and operates as a 32 x 32 block within the bigger 32KD system that yields 512 inputs and 512 outputs total.

The RIO chassis also provides 16 relay outputs and are used for functions such as “on air” lights, and remote (or auto) start of playback devices (CD/Carts/Automation). Sixteen opto-isolator inputs are used for ready tallies from the playback devices, to reset the input modules to off, and for microphone cough-button inputs.

A FULL BROADCAST SUITE

Dees ordered a total of three consoles. SAS delivered the first one in February to the new Rick Dees facility here in Burbank California. This console connects to the SAS 32KD digital audio network system and allows studios to be shared, merged, and used for main programming or production, due to the inherent ability of the system to map any source to any destination.



The happy owner of the first **DEES DIGITAL CONSOLE.**

The other two consoles will be installed with RIO chassis as self-contained stand-alone systems. Each RIO will have the necessary software to operate as a standalone 32 X 32 system. One will be installed in Rick’s studio at the KMVN facility and the other will be installed in his personal studio on his farm in Kentucky.

SAS delivered my concept product from “the idea in my head” to a complete delivered product within three months. I have worked with SAS for many years; it was a joy to work with them on this distinctive project and I am sure they are as proud of the new *Dees Digital Console* as I am.

For more information – and more photos – check out the SAS website at www.sasaudio.com

Barry Victor has been designing studios and running facilities from one station to entire networks for over thirty years. Contact him at barry@victorgroup.net

INSTANT DIGITAL RADIO

FMeXtra™

YOU CAN BE BROADCASTING DIGITAL PROGRAMMING IN UNDER AN HOUR FOR A LOT LESS THAN YOU THINK!

No modifications to your existing equipment.
No new FCC license. No royalties. No licensing fees.
No disruption of your present broadcast programming.

Multi-channel Digital Programming • Open Standard Codecs • Open Standard Encryption
Conditional Access • Visually Enhanced Programming Capabilities
Radios Featuring: Visual Displays, SD card slot, and USB upgrades.

INSTANT DIGITAL RADIO, JUST ADD PROGRAMMING FMeXtra is here today!



777 AMES AVE. • MILPITAS, CALIFORNIA 95035 • TEL: 408-956-8707 WWW.DREINC.COM

Authorized Distributors

United States
Armstrong Transmitter Corp.
315.673.1269
www.armstrongtx.com

BEXT Corporation
888 239 8462
www.bext.com

Energy-Onix
888.324-6649
www.energy-onix.com

Canada
Pippin Technical
1-888-508-4677
www.pippintech.com

Latin America
BEXT Corporation
305 538 4666
www.bext.com

Asia
Rikel Corporation
+81-3-3345-2150
www.rikel.co.jp

Scandinavia
Noble Records As
+ 47 92 03 03 03

Poland
ED2 Audio Professional Systems
+48 32 3832410, 3832411

Italy
ADVEN NL
39 0323 552001
www.adven.it

South Africa
Prosound (Pty) Ltd.
+27-11-334-6550
www.prosound.co.za

Wireless Broadband Internet Remotes



"The first time out with the Tieline was a brilliantly simple experience for everyone involved. For lack of a better phrase, the codec just worked."

- **Christian Vang**
Chief Engineer
Clear Channel St. Louis



"The codecs sounded great. My management was very, very impressed with the demos"

- **Grady Jeffreys,**
Technical Manager,
Mackay Communications



"The remote was a spectacular success, in no small part thanks to the flawless sound which the Tieline G3 provided over the public Internet"

- **Mike Rabey**
Chief Engineer
Entercom Indianapolis

100%
*COMREX
POTS
Compatible



NAB2007
THE WORLD'S LARGEST ELECTRONIC MEDIA SHOW

Get Free demo codecs delivered to your door Now!!

Tieline
www.tieline.com

800-780-4750

*Compatible with Comrex Matrix, Blue, Vector POTS Codecs Comrex is a registered trademark of Comrex corporation

Transmission Guide

by Jeff Welton, Nautel

Phase Rotators and Why You Need Them

One of the major positive effects of the move towards digital transmission has been the number of stations that have moved to clean up their transmitters, matching networks, and antenna systems. However, as Jeff Welton explains, installing a new transmitter could negate all the other work, if it is not done carefully.

If you are in the process of preparing for an upgrade to employ HD Radio technology at your AM station or if you are getting ready to upgrade an existing facility that may, at some point, broadcast a signal with HD Radio technology, you should be asking the following question:

“Why,” you ask, “would I ever need a device to change the phasing of my antenna system? Isn’t the phasor or ATU enough?”

In a nutshell, the answer is: no, not always. In the following paragraphs, I am going to tell you the steps for optimizing the antenna system for HD, and then give some examples where a phase rotator could make life easier.

BEYOND “50 j0”

The first thing to remember is that for optimum transmission of an HD radio signal, it is not enough to simply have a 50 j0 ohm impedance presented at the transmitter output connection. Nor is it sufficient to have the SWR within the specified limits of 1.4:1 at the + and - 15 kHz sidebands.

In order to minimize spectral regrowth (which we discussed in the December 2005 through May 2006 issues of *Radio Guide*) it is also necessary for the load impedance to be symmetrical and to present a nominal 50 j0 ohm load at the output of the power amplifiers - but also with the sidebands being purely symmetrical and equal in deviation from 50 j0. It is no longer sufficient to tweak the load for minimum reflected power at the output of the transmitter and call it good enough.

Symptoms of a poorly matched load (with respect to phase delay and sideband symmetry) include long acquisition times by HD receivers, poor range, and frequent blending to analog, even in areas where the signal should be good.

PROPERLY SETTING AND MEASURING THE TRANSMITTER LOAD

Here is a step-by-step list of what you need to do to set up the load for a transmitter broadcasting HD.

First, it is necessary to know the existing load impedance. This means plotting the antenna impedance over the range of operating frequencies (Fc-15 kHz to

Fc+15 kHz). It is also necessary to know how this appears to the RF amplifiers in the transmitter, which means we need to know the phase delay between the measuring point (where we plotted the antenna impedance) and the RF amplifier outputs.

Most manufacturers can and will provide the needed data on phase delay from RF amplifier output to transmitter output, making this is a much more convenient place to measure the antenna system impedance. (Nautel, for example, makes this information available on our website for all of our current HD compatible transmitters. Browse to <http://www.nautel.com/ResourceCentre.aspx> and simply scroll down to Information Sheets to view a chart of phase delay for our XR series transmitters.)

Most manufacturers also provide this data with the test results of transmitters shipped within the last few years. For older transmitters, it may be necessary to contact the transmitter maker for more information.

LOOKING AT THE ANTENNA SYSTEM

Next, it is necessary to know the antenna system SWR. The most visual way to do this is to plot the antenna impedance on a Smith chart. Things to remember are that the antenna impedance must present an SWR of less than 1.4:1 at Fc + and - 15 kHz and that the impedance plot must be symmetrical.

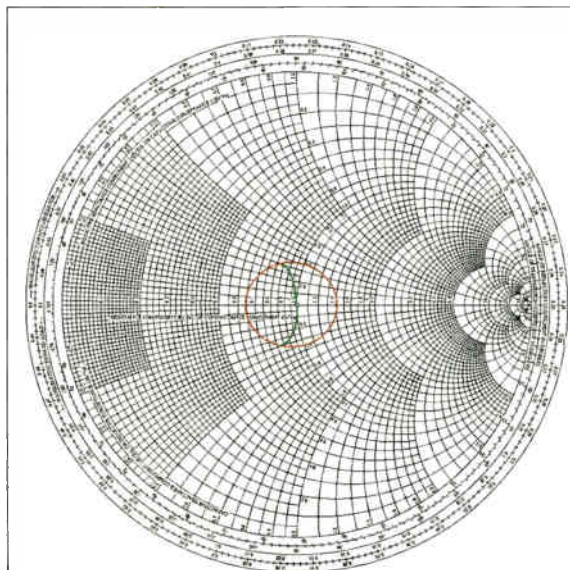


Figure 1

Load symmetry on a Smith Chart.

The preceding Smith chart (Figure 1) representation depicts the ideal RF amplifier *load symmetry*.

As you look at the graph, please remember that this is the ideal *phase rotation* for the load seen by the RF amplifier outputs; it will not necessarily look the same at the transmitter output connection. Also remember that the above is a “worst case,” where the antenna impedance is 1.4:1 at the sidebands – a better load would look the same as the curve shown within the circle, but would not extend to the edges of the circle.

DETERMINING THE TRANSMITTER OUTPUT DELAY

Assuming that data is not available for delay through the transmitter, it can be measured by using an oscilloscope to measure the RF output of the amplifiers and comparing that to the output of the transmitter.

Caution!!!

A suitable high voltage probe must be used if attempting to measure transmitter output directly, as lethal voltages (to both equipment and personnel) may be present at this point.

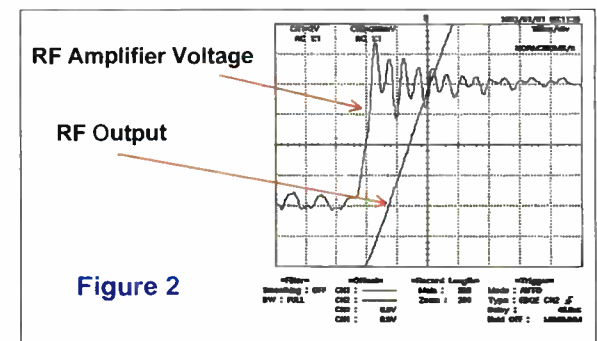


Figure 2

Comparing the RF Amplifier and RF Output.

In this display we see that the RF Amplifier leads the RF Output by 1.4 divisions, or 140 nanoseconds. Assuming our test frequency is 1000 kHz, we know that the signal oscillates at 1 million cycles per second. We can invert this to determine that the time period for this frequency is 1 microsecond per cycle.

Therefore, 140 nanoseconds divided by 1 microsecond per cycle gives us a phase delay of 0.14 cycles. Multiply this number by 360 degrees per cycle and we find that the delay shown by this waveform is 50.4 degrees. Note that this is not a typical output network phase delay, the waveform was merely selected to illustrate the calculations required.

Once we know the impedance of the load at the transmitter output and the phase delay between the RF amplifier outputs and the transmitter output, we can optimize the antenna at the transmitter output terminals, setting it so that the sidebands are symmetrical and within the 1.4:1 SWR limitations.

Then we need to phase rotate it to create the best load to the amplifiers. This is done by rotating the antenna

(Continued on Page 10)

NEXT GENERATION

MAC & MiniMAC Transmitter Remote Control

Relax,

your sites are in good hands!

www.davicom.com



Meet The New Innkeepers (they're a very functional family)

We've refined our innkeeper 1(x) line, gussied it up, gave it some great new features, expanded its family AND lowered the cost!

Why take a successful line like the innkeeper 1 and change it? Because we knew we could make it better AND lower your cost!

For starters, we've combined the features of the innkeeper 1 and the innkeeper 1x into a single hybrid that's more than the sum of its parts. As with the original, the new innkeeper 1x is a full-featured phone line interface which uses a proprietary dual-convergence echo canceler algorithm. It's designed to achieve excellent separation without any setup, and without sending

a noise burst down the line. Plus, we've added an RS-232 connector for remote control applications and made them globally-compliant.

For remote control, we've now got two compatible products. The Guest Module 1 gives you remote access to the on-hook/off-hook and dial features of the innkeeper 1x series digital hybrids, using an 8 pin RJ45 modular cable.

The RIU-IP interface contains a web server which allows you to send and receive control data

through your web browser. It can be connected to your computer NIC card for direct control, to a switch or hub for network control, or to an ethernet port with internet access for control from anywhere in the world.

Innkeeper 1x is more than a facelift. More than an upgraded feature set. It's a comprehensive, streamlined hybrid environment that gives you the tools you need to control it from anywhere. Visit us on the web or give us a call to learn more about innkeeper 1x.

JK Audio

www.jkaudio.com

TOOLS FOR SUCCESSFUL RADIO

JK Audio, Inc. Sandwich, IL 60548 USA • Toll Free: 800-552-8346 • Tel: 815-786-2929 • Fax: 815-786-8502 • www.jkaudio.com • info@jkaudio.com

Recipient of NAB 2007 Radio Engineering Achievement Award

- **Inventor**
 - Molybdenum Permalloy Core Pulse Transformer
 - Bistable Multivibrator (Flip Flop) Circuit
- **Electrical Engineering Professor at Clemson College**
- **AM High Power Transmitter Design Engineer at the Radio Corporation of America**



LOUIS A. KING
Founder & Chairman, Kintronic Labs, Inc.

- **Broadcast Consultant with PE in TN & VA**
- **Manufacturing Entrepreneur**
- **Technology Innovator**
- **Served the AM Radio Industry Worldwide for over 50 Years.**



Kintronic Labs, Inc.

Thank You!

To The NAB and All Of Our Friends In The Industry Who Helped Make This Possible



Kintronic Labs, Inc.

423.878.3141 Fax 423.878.4224 Email: ktl@kintronic.com www.kintronic.com

Transmission Guide

by Jeff Welton

Continued from Page 8

plot on the Smith chart by the amount of phase delay through the transmitter, then calculating how much additional delay is required to achieve the ideal load characteristics indicated in Figure 1.

A PRACTICAL EXAMPLE

As an example, if I were planning to use a Nautel XR12 transmitter at 690 kHz, the chart on our website shows me that the transmitter has a nominal phase delay of 152 degrees.

If I want to see an optimum load at the amplifier output, then I can draw a radial on the Smith chart at 152 degrees to show me the plot I should achieve when the load is properly tuned to match the delay through the transmitter. Alternately, I can subtract the phase delay through the transmitter's output filter from 180 degrees and obtain the phase delay needed to achieve optimum symmetry in that fashion.

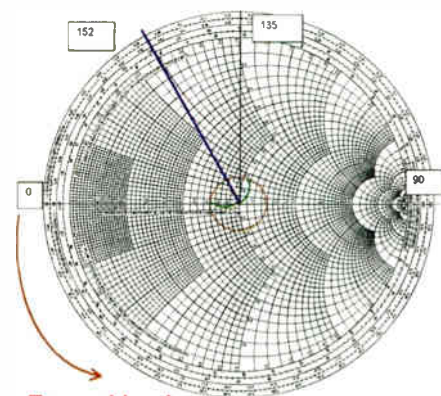


Figure 3

A Smith chart representation of the load shifted away from the RF Amplifier.

In analyzing the results, this shows me that I need an additional 28 degrees of phase shift in order to achieve an optimum load to the RF amplifiers. This can be done by installing a Pi network at the output of the transmitter. (Design of a Pi network is outside the scope of this article, but information can be found from many sources, including the NAB Engineering Handbook.)

Using the phase rotator to adjust the delay will move the curve right back to the "sweet spot" and allow you to continue to peak the entire transmission system.

PHASE ROTATOR BENEFITS

Something to note during the design of a phase rotator is that ideally it will be built in such a way that if it needs to be adjusted at a later date, the adjustment does not require wholesale component replacement.

The reason for this is simple: at some point in the future, you are probably going to want to replace your transmitter. Our XR12 at 690 kHz has a phase delay from RF amplifiers to output connector of 152 degrees – but another transmitter may not.

For example, I have done HD upgrades on Nautel transmitters that were 15+ years old. Those transmitters will be nearing the end of their lifecycle shortly and will be getting replaced by new transmitters. An adjustable phase rotator will ensure that such a replacement is made easier and does not require a wholesale revision of the input stages to the antenna system in order to accommodate the HD technology.

As with most other things, you can readily see that a little bit of foresight at this point could save significant time and expense later on.

MATCHING MULTIPLE TRANSMITTERS

Another example where a phase rotator could become useful is when even backup transmitters are configured for broadcasting with HD Radio technology. Using nominal 15 year transmitter lifecycles, this point is not all that far away.

Then we are facing the same scenario – but this time, with two different transmitters with different phase delays. The options are to make the phase rotator common to both and variable, so that if we end up on standby we can go to the site as soon as possible to reset the delay for the backup transmitter, or to have a separate delay circuit for each transmitter, prior to the common point.

It always helps to contact your manufacturer. Once the antenna system is swept and optimized for the

specific transmitter, provide us with the phase and amplitude response of a generator looking into the antenna system. We can usually find ways to help you optimize HD performance into the antenna system.

One of these methods is by employing a pre-correction algorithm to the HD generator to overcome any non-linearities with respect to phase or amplitude response. This has been done and tested in the field and will be a subject for a future topic somewhere down the road, as we discover and develop newer and more exciting ways to move broadcast technology forward.

Jeff's earlier articles on HD installation on AM and FM can be found at http://www.radio-guide.com/#Radio_Guide_2005_On-Line and http://www.radio-guide.com/#Radio_Guide_2006_On-Line

NOTE: These URLs are available at www.radio-guide.com/URL..htm

After 16-1/2 years in the technical and field support department, Jeff Welton was recently promoted to the position of Technical Sales Representative at Nautel. A frequent contributor to *Radio Guide*, you can contact him at jwelton@nautel.com

Able to leap tall buildings?



No distance or line-of-sight restriction makes **Starlink SL9003T1** the ideal choice for STL/TSL and intercity links.

Starlink T1's bidirectional high capacity significantly reduces communications costs compared to discrete audio, telephone and data circuits.

And **Starlink's** uncompressed digital audio will stand out above your competition.

STL over any distance or terrain... ...Moseley Starlink T1



- HD Radio™ and Multicasting
- Transmitter remote control
- RBDS data
- Telephone extension
- IP-based equipment control
- Internet and e-mail connection

Call the digital STL experts today.

Dave Chancey 805.968.9621

Bill Gould 978.373.6303

www.moseleysb.com

Moseley

Design » Build » Installation Radio and Television Studios

Ram Broadcast Systems builds studios for most of North America's major networks, group stations, and news organizations.

Ram offers comprehensive studio design, fabrication, systems integration, and components. Put Ram's 35 years of experience to work for you:

- Studio Design & Fabrication
- Pre-Wired Systems
- Broadcast Furniture
- Switchers
- Metering
- Amplifiers
- Wire & Cable
- Racks
- Accessories
- Used Equipment
- And More!



RAM Broadcast Systems
www.ramsyscom.com
800.779.7575

TITUS TECHNOLOGICAL LABORATORIES **3-DRX**

DIGITAL AUDIO SWITCHING
 THE LOGICAL WAY

Automatically switches between two AES digital audio signals or a stereo analog signal. Analyzes digital signal errors (CRC, bit framing, etc.) and checks for loss of audio on the digital signal. User programmable.

800.806.8851 WWW.TITUSLABS.COM

GR GORMAN-REDLICH

30 Years Experience with Alerting Equipment

257 W. Union Street, Athens, OH 45701
 Phone: 740-593-3150 – Fax: 740-592-3898



Model CRW-S Weather Receiver

Model CRW-S Weather Receiver
 For receiving alerts from the National Weather Service (NWS). Redesign of our Model CRW now with the "SAME" decoder feature.

Easy to Use and Reliable EAS Equipment*

- Pre-programmed for your location.
- Program interrupt relays built in.
- Six audio inputs.
- 2 minutes stored audio.
- All operations via keypad.

EAS1 Encoder-Decoder

EAS1 Decoder

EAS1-CG Encoder Decoder with built-in character generator.

*Optional DTMF interface available.



EAS1 Encoder-Decoder



Model CMR Digital Antenna Monitor

Model CMR Digital Antenna Monitor

- Remote Controllable
- True ratio readings.
- Phase sign automatic, no extra operation.

Contact Jim Gorman at: 740-593-3150
jjmg@gorman-redlich.com – www.gorman-redlich.com

Processing Guide

by Jim Somich

Processing: Yesterday, Today, and Tomorrow

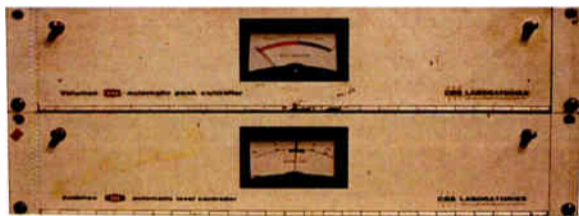
Part 3: Talking with Today's Masters

Before his recent death, Jim Somich was very interested in just how audio processing has changed over the years – but even more so in considering what is to come in the future. Of course, understanding the current technology and the reasoning behind it is what gives us the foundation to discuss the future. In preparation for this article, Jim had conversations with some of the current masters of processing – and some of the future masters.

"History Repeats Itself. First as tragedy, then as farce." – Karl Marx

Today, we may deride the Audimaxes and Sta-Levels of the past and assure ourselves that we are "state-of-the-art" all the way. After all, digital is perfect is it not? And we do have digital boxes, do we not?

Well, perhaps it is time to break a few eggs: I predict that in thirty years we will look back on the DSP processors of today in much the same way as we smile condescendingly at the mention of an Audimax or Volumax of yesteryear.



Are the Maxx Brothers worthy of respect or derision?

What will it take to develop the first 21st century audio processor? We sure do not have all the answers today. In fact, we do not even know many of the questions. But let us give it a try!

BRIDGING THE PAST AND FUTURE

The digital processors of today are based on the best analog designs of the past. Those digital boxes, introduced in the last millennium, have been enhancements and improvements on older designs. We are still waiting for the first breakthrough processor of the 21st century!

Most stations which can afford anything they want are using either Orban or Omnia digital processors. Processing strategies that are virtually impossible in analog are relatively easy in digital. Each box has its own unique processing strategy; these new strategies will be the hallmark of the first major processor of the new millennium, and so we want to discuss those strategies.

Yet, it is important that we do not embrace digital just because it is digital. Many analog designs from the past are still performing exceptionally well on the air, proving that you do not need the latest digital box to sound great.

The ultimate goal of this series is to speculate on the future, but our task today is to take a cold, hard look at the world around us: what is good and what is bad about broadcasting in general – and audio processing in particular.

A PROCESSING "ROUNDTABLE"

Designing and building broadcast processors is a highly competitive business, so it is not so unusual that the guys at the top of the field are usually closed-

mouthed about anything but their companies' standard talking points.

Therefore, having the opportunity to sit down and talk with the men behind the leading processors of our day is really something. Of course, given everyone's schedule, we have to settle for a virtual roundtable, a combination of live, email, and telephone conversations. Still, the chance to chat and learn something about their thought processes is pretty neat, no matter which way we accomplish it.

We were fortunate to be able to interview Bob Orban, a living legend in the processing world, Frank Foti, the challenger to the throne, and Cornelius Gould, a young Turk who might just develop the first great processor of the 21st Century. So, let us take a break from my pontificating. Maybe these three guys will give us some insights on the present state of audio processing – and what we can expect in the years ahead.

DECONSTRUCTING AN "OVERNIGHT" SUCCESS

We will start by listening to the reigning champs, Bob and Frank, in this article. Next time, we will push into the future with Corny Gould. If we are fortunate, we might learn something that we did not know before.

Jim Somich: Frank, I know you are not the overnight sensation that many people think you are. What were your early influences, and how did the Vigilante, your first processor, come about?

Frank Foti: During my stint at Z-100 (1983-1987) we had the Texar Audio Prisms. Up until that time, FM audio processors generally employed pre-emphasis before the (multiband) limiters. Upon grasping the full understanding about how that multi-band system worked, I kept think-

ing about a limiter system that managed pre-emphasis after the multi-bands, rather than before them.

My thinking was that the control loops in that architecture were essentially tilted upwards a bit, due to the emphasis, and that was causing uneven processing in the upper frequencies. Essentially the upper range of each audio band had a lower limiting threshold. The question – and quest – became finding out what happens if the control loops are flat and the limiters are set to manage pre-emphasis via differing threshold levels?

ADAPTATION

Jim Somich: Your first processor was actually an adaptation of an existing processor, was it not?

Frank Foti: The Vigilante, as most know, grew out of the Aphex Dominator, Model 700. I had seen the prototype Dominator at NAB 1985, but it was a lot more elaborate than the finished product. The prototype appeared to be a direct answer to the Orban Optimod 8100, but with auto-adjusting crossover frequencies, and a few other new tricks. I never knew why that version never appeared.

However, upon playing with the original Dominator – which sounded very good if not pushed too hard – it became apparent that the timing was the same in all three bands. That caused the unit to become "busy" sounding quite rapidly, especially when set aggressively. Before ever having a schematic at hand, I found the R-C networks that governed the timing and began playing. It did not take long to "tune" the unit for a CHR station.

Eventually, a schematic was acquired. I began playing with the ALT (Automatic Limiting Threshold) circuit and more advancement in the Vigilante's gestation occurred.



The original Vigilante was built on an Aphex foundation.

Being able to modify the threshold settings in the Dominator empowered the box to manage pre-emphasis very consistently. The "attack" and "release" functions were brought out to the front panel via three-position switches. The limiting thresholds were also brought out via numeric "dial pots" that, in fact, were suggested to me by you!

But – the key sonic element and improvement that we heard on-the-air was how much the high frequency domain opened up. This was the result of pre-emphasis insertion *after* the multi-bands.

BRINGING THE PARTS TOGETHER

Jim Somich: Was the Vigilante an all-in-one, stand-alone box or did it require support by other processors?

Frank Foti: At this early stage the unit only did the dynamic limiting. We used the clippers (cards 8/9) from the Orban 8100, which worked quite well. Upon launching "Cutting Edge," and building these full-time, radio stations wanted an integrated solution; I designed our first distortion-controlled clipper, which was added to the Vigilante sometime in 1989.

Jim Somich: Which processor designers influenced you most strongly at this time?

Frank Foti: The influence here was mainly Glen Clark. I thought his Audio Prism concept to be very good. I used to tell him that he needed to create a multi-band limiter version of the Prism. While the Dominator was multi-band, that was not the idea that was lurking in my head. Upon the modifications to the Dominator, it got closer, but those ideas eventually manifested themselves in the Unity – and eventually in the Omnia.

BRINGING THE PARTS TOGETHER

Jim Somich: OK, that progression makes sense. Now what was the Unity, and how did it differ from the Vigilante?

Frank Foti: The Unity was our attempt at putting the rack of individual processor units in one box. The technology used was known as "digitally-sampled-analog." The idea was to clone a rack of gear that would have been a wideband AGC, multi-band compression, multi-band limiting, pre-emphasis, distortion controlled clipping, and the stereo generator. It worked quite well.

The clipper design came right from the Vigilante. The stereo generator included a composite clipper that performed clipping before the pilot was inserted. The entire system was governed by a microprocessor; it could save and recall a default, as well as user presets.

A concept we introduced with Unity, and carried forward to Omnia, was the idea to employ differing architecture into the dynamic sections. The Unity had feedback control on the lower two limiters and feed-forward on the upper two bands. This enabled the system to maintain the warm IMD-ish sound on lower frequencies, which feedback limiters tend to offer.

(Continued on Page 14)

Get "In The (Talkback) Zone"!



Use up to 12 Guest Pods in any combination

The new **MultiPhones II** multi-user headphones system now has **Zoned Talkback!**

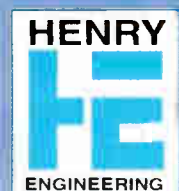
Use separate Guest Pod **Talkback Zones** for Host, A-Guests, and B-Guests. Talk to each group without bothering the others!

For complete details 626.355.3656 or visit www.henryeng.com

- Easy upgrade for existing systems
- Simple "daisy chain" installation
- Uses cat5 cabling

Get MORE MultiPhones for LESS cash! The new lower price is just \$250*. In stock at all Henry Engineering dealers.

We Build Solutions



*Price is for MultiPhones II Master unit; Guest Pods sold separately.

Processing Guide

by Jim Somich

Processing: Yesterday, Today, and Tomorrow

– Continued from Page 12 –

Jim Somich: That approach is a sort of double-edge sword, right? IMD not normally a desirable audio component.

Frank Foti: That is true. IMD is quite irritating on presence and high frequencies. On those bands, we utilized feed-forward control, which is inherently much lower in IMD. This type of processing offers a clean, open, and smooth high end, while retaining a rich fullness to the low end. We still use this method within Omnia processors.



The Cutting Edge “Unity”

Jim Somich: If you were to point out the main weakness of the Unity, what would that be?

Frank Foti: In hindsight, the Unity never had the internal flexibility that a DSP box has. As such, there were many hindering factors that kept me from getting it to where the ideas that were still lingering up in the foggy grey matter needed to go.

Of course, the Unity was successful enough in that it made the worldwide broadcast industry aware of our efforts. If anything, it got the company noticed when we introduced the Omnia, which was our first full DSP processor.

DSP REALLY TAKES THE STAGE

Jim Somich: That brings us to the dawn of DSP audio processing – and Bob Orban.

Bob, I always thought of you as an “analog guru.” How did you make the transition into the digital age? It seems like you got real good, real fast!

Bob Orban: I don’t write DSP code, but I create the algorithmic architecture and do most of the coefficient computations – in other words I create “schematic diagrams with parts values” that other engineers at Orban turn into actual code.

I credit my ability to learn DSP in mid-career to an excellent engineering education at Princeton and Stanford that emphasized timeless engineering fundamentals, particularly math. I learned DSP myself by studying textbooks and journal articles, but I couldn’t have done it without the university education that I got.

Jim Somich: The Orban 8200 Optimod was the first DSP broadcast processor in the world to achieve commercial success – and that was quite an accomplishment. Bob, what were the influences that moved Orban from being an analog company into the digital era?

Bob Orban: The 8200 project originally started as a DSP model of the Orban 424 compressor using the then-new Motorola 56001 24-bit DSP chips. (It was the Motorola 24-bit architecture that finally allowed high-quality DSP filters suitable for pro audio applications.)



Bob Orban

We got far enough along with that to realize that we could build a complete DSP broadcast audio processor that modeled our analog processors and had a few “DSP-only” innovations besides. At that time, Greg Ogonowski, a long-time friend and “friendly competitor” in the Gregg Labs days, was formally hired as a consultant on the 8200 project and we decided to make the 8200’s multi-band algorithm five-band (as it was in the Gregg Labs processors) instead of six-band as it has been in the XT2.



The Orban Optimod 8200

Overall, though, most of the influences for the 8200 came from earlier processing I had developed, including the 8100 and the XT2. We learned a lot doing the 8200, and I combined this with new ideas that could finally be realized because we now had enough DSP power to pull them off. The 8400 was the end result. I should add that the 8400 project was the first Orban DSP-based processor that really exploited the things that one could do in DSP that were impossible in analog.

DOING THE FORMERLY IMPOSSIBLE

Jim Somich: That certainly sounds like a major jump forward. What sort of things were now possible using DSP?

Bob Orban: In my opinion, the big advantage of DSP compared to analog processing is that one can implement look-ahead processing economically because making delay lines is just a matter of writing data to memory and reading it out later. By being able to “look into the future,” the DSP-based processing can make intelligent decisions that are impossible in analog designs.



The 8400 brought full DSP audio processing to the market.

Look-ahead limiting is just one example of look-ahead processing. The 8400 and 8500 use look-ahead processing for clipping distortion control and for our “half-cosine interpolation” composite limiting, among other functions.

Another important thing we did in the 8400 was to add a speech/music detector, which allowed the processing to be optimized separately for speech and music. Some of the most sophisticated of the old-school, major-market processing chains actually had separate speech and music processing because these really require separate adjustments. DSP allowed us to do this automatically within one processor.

DSP CREATES A STUDIO ISSUE

Jim Somich: There was some surprising feedback from the field from the effects of the look-ahead limiter. What happened?

Bob Orban: The most important decision that we had to make before designing the 8400 was whether it was acceptable to make a processor with a throughput delay so long that it was impractical for talent to monitor its output through headphones when speaking. We assumed that the improvements in processing would be more important to broadcasters than the inconvenience of arranging a separate monitoring chain for talent headphones.

Unfortunately, we were surprised when the 8400 was released – we got lots of complaints about headphone monitoring. Accordingly, in version 2.0 of the 8400 software, we cut the delay in half without compromising the look-ahead algorithms by looking at every delay in the chain and getting rid of the ones that were not actually necessary to implement the look-ahead processing.

We also allowed users to configure the 8400 to emit a low-delay headphone monitor signal from an unused output. And when we designed the 8500, which maintained a 64 kHz minimum sample rate (as opposed to 32 kHz in the 8400), we further reduced delay by about 4 ms by eliminating 64/32 and 32/64 kHz sample rate conversions in the signal path.

However, even with all this effort, the best-quality processing available in the 8500 (using look-ahead in the most favorable way to reduce distortion) exhibits a 37 ms delay, which is too long for headphone monitoring.

Fortunately, most of the advantages of look-ahead processing are still available with a 17 ms delay, which is the delay of most of the 8500 factory presets. Additionally, we made available a separate ultra-low-latency processing chain without look-ahead for those applications where the low delay was considered necessary, such as remote off-air cueing.

WE HAD TO ASK

Jim Somich: Would you care to take out your crystal ball and give us a few predictions on what we can expect from Orban in the future?

Bob Orban: That would be telling! Seriously, I don’t want to say anything that might give away future plans to my competition.

Jim Somich: Understood ... and thank you for taking the time to share with us as much as you did.

OMNIA ENTERS THE RING

Jim Somich: Frank, how did your first DSP processor, the Omnia come about?

Frank Foti: Omnia was an outgrowth of the Unity, along with input from all those who were critical of the Unity. Moving into DSP illuminated many things for us; most notably was the whole notion about how to clip pre-emphasized audio without causing aliasing distortion. Steve Church and I put a solid two years into researching that one alone.

Omnia’s lineage follows my thinking all the way back to Z-100 and the rack of gear we had in NYC. The first goal – and what would have been the deal-breaker – was to create a hard-limiter (clipper) that didn’t generate that awful grunge effect that was obvious to the sound of other units and was giving DSP-based processing a bad name.

Within the dynamic sections, we were able to take advantage of the DSP processing power to add functions like “Make-Up Gain.” This allows the compressors to operate with slower overall timing, but “knows” when softer segments are occurring and will speed up the system only during those intervals.



The Omnia.fm enters the DSP marketplace.

Additionally, Omnia offers gating that is very intelligent. It can reset the dynamic gain to a preset platform level or just freeze gain during periods of gating. Stereo-EFX was designed to enhance stereo without destroying the natural soundfield or exaggerate multipath due increased RMS levels of the L-R signal.

(Continued on Page 16)

Wizard 4 Windows now brings Multi Station Monitoring to your desktop with true multitasking

www.belar.com 610-687-5550
Email sales@belar.com

See our interactive demo at www.belar.com

BELAR
"When accuracy counts, count on Belar."

The screenshot displays a Windows desktop environment with several open windows. On the left, there are three vertical panels showing station information: '63.9 MODULATION', '2 98.1 WQGL', and '102.7 MODULATION'. The top right shows three 'FMMA-1 TOTAL Bar Graph' windows for Rack1, Rack2, and Rack3, each with a color-coded bar (yellow, green, red) and statistics for PEAK, AVE, and MIN. A 'Belar Electronics Wizard' window is also visible. The bottom of the screen shows a taskbar with 'wizwin', 'Adobe Photoshop Elements', and 'Inbox - Outlook Express' open. The system tray shows '3:53 PM'.

the PETER DAHL CO. for custom transformers

DC filter capacitors • variable capacitors
custom rectifier assemblies • transient suppressors
and then some...

Peter Dahl Co.
write or fax for an extensive catalog

915 751-2300 • fax: 915 751-0768 • 5869 Waycross • El Paso, TX 79924
www.pwdahl.com • pwdco@pwdahl.com

New Broadcast equipment at exceptional prices.
Quality pre-owned equipment.
Customized automation systems.
Complete turnkey installation
Console pre-wiring packages.
Broadcast equipment repair.
Complete engineering services.
Studio design and project management.

Lightner Electronics Inc.
Your Ultimate Solution.

Toll Free: 866-239-3888
Fax: 814-239-8402
www.LightnerElectronics.com

Processing Guide

by Jim Somich

— Continued from Page 14 —

The composite clipper that is incorporated into Omnia also contains a DSP version of “The Dividend” which keeps composite clipping products in the SCA region down to a minimum. This was a first for an integrated audio processor.

Jim Somich: Once you had a working prototype, how did you introduce it?

Frank Foti: I personally took the beta version of Omnia.fm to those customers who were not fans of the Unity. I figured if we could please the critics, then we were on to something. With all honesty, I can say that we visited close to 25 customers (the world over) and *every one of them* purchased the Omnia!

AND THAT QUESTION AGAIN

Jim Somich: That is quite an achievement for any product. So, looking ahead — can I get any predictions from you? What can we expect out of you and your team in the future?

Frank Foti: Looking into the future is always fun. Here in 2007, we now live in a coded-audio world. Thus, audio processing is becoming more focused on that transmission method. Still, I feel there’s still at least one more, if not two, conventional broadcast processors yet to be designed for FM and AM (at least from our company). I’m not sure that those will be focused on more loudness. As we all know, processing creates L-O-U-D audio today, all the way from the CD source straight through to the eardrum.

My view is that we employ algorithms that will diagnose the signal and modify the architecture in order to reduce sonic artifacts. (We’re doing this already in the codec world with our SENSUS Technology.) Reduction of distortion, THD, and IMD, while maintaining competitive audio is the goal. Then again, hasn’t that always been the goal?

GETTING MORE FUNCTIONS FROM THE TECHNOLOGY

Depending upon how the digital transmission services settle, we could see META data come to radio, and that opens a whole new frontier. HDTV has this already with Dolby-Digital, but I foresee a method that would be far more sophisticated and comprehensive, not just a wideband method, as the TV counterpart employs.

Processing platforms are already beginning a paradigm shift. We’re moving towards a transition period from where we have dedicated boxes into the early stages of doing all processing as a PC application.

We have already developed a processing farm where many instances of an audio processing application are operating within one “engine” — a single box that allows up to a preset number of audio processors to run indepen-

dently of one another. All I/O is Ethernet to the station’s infrastructure or can be routed to dedicated nodes that are AES or analog.

Additionally, utility functions regarding processing are becoming more elaborate. The ability to display detailed information about a signal, or segment thereof, is now available. Processing power, which once was a premium in cost, is now quite affordable in the digital domain, just as the lower-cost, high-performance opamps and VCA’s became during the analog years.

Jim Somich: Thank you, Frank. Talking with you is always an education.

Folks, I hope you have enjoyed this discussion with Bob and Frank — today’s masters of audio processing. Join us next month when we will take a look at the way the next generation of audio processor designers is thinking. I promise it will be interesting!

TRYING TO KEEP FACTS STRAIGHT

Memories are a tricky thing. As we try to recap the history of audio processing over the past 70 years, it is inevitable our memory cells will fail once or twice. Last time, in discussing the BL-40 Modulimiter — indeed a revolutionary product — I attributed the patent to Bill Putnam.

However, as Paul Gregg kindly pointed out, while Putnam did own the patent, it was originally issued to Jim Lawrence, who first used the optical gain control in his Teletronix LA-1 and LA-2. Shortly thereafter, Teletronix (and the patents) was sold to Babcock Electronics and then Bill Putnam’s UREI.

The author would like to thank Barry Mishkind, Frank Foti, Bob Orban, and Corny Gould for their invaluable assistance in the writing of this series.

Jim Somich’s career included positions as a major market Chief Engineer, Director of Engineering for a group owner, and as the designer of a number of products, including the FlexiMod FM Processor.

The best use the best.™

9000 stations 100 countries

Welcome to the World’s largest broadcast software company

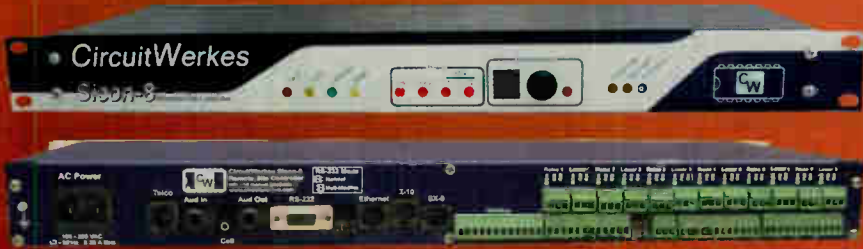


Visit us at www.rcsworks.com or www.prophetsys.com Email us at best@rcsworks.com

Visit Us at NAB Booth #N6511

© Copyright 2007, RCS, Inc. All Rights Reserved. RCS, RCS Sound Software, the featured product names and their logos are registered trademarks, or trademarks, of RCS, Inc.

The New Sicon-8 Voice Remote Control



The CircuitWerkes Sicon-8 Voice Remote Control

- Use our pre-recorded voice responses or record your own!
- 3 channels of metering, status and control (expandable to 16) and up to 5 alarms per channel.
- No accessories necessary to control your site right out of the box.
- Auto-ranging, auto-calibrating meters make setup a snap.
- Function scheduler, auto-logging & alarm reporting included.

Introducing the Sicon-8, a revolutionary transmitter site controller with custom voice recording technology for perfectly natural sounding dial-up or radio link control. All of the I/O, including 8 channels of relays, are included on the main board so there is no need to buy anything else. All metering, status and control connections are on depluggable screw terminals. An expander chassis, the SX-8, adds eight channels of metering, status & control to an existing Sicon-8 for a maximum of 16 channels. Designed to be controlled from any dial-up telephone, an auto-answer cell phone or from its serial port, the Sicon-8 gives you the control options that you need. A free, Windows program, the Siconcontroller, gives you full access to all of the Sicon-8's programming and control functions. Basic logging functions are included. Live Internet interfacing is accomplished with an inexpensive accessory. Visit us online at www.circuitwerkes.com for complete info on the Sicon-8.

Remote Broadcast Solutions



MicTel Mic/Line to Telephone Interface

- Outputs & Inputs for telephone handset, cellular phone or balanced line level at up to +10dBm.
- Operates up to 36+ hours on two 9V alkaline batteries.
- High quality, user-switchable, internal limiter prevents clipping.
- External power input with silent, auto-switching battery backup.
- Individual gain controls for send, receive and headphones levels.



Unattended Dial-Up Broadcasts with the DR-10

- The DR-10 is a Dial-Up remote control with balanced, telephone audio input & output that can control many automation systems or your audio console for unattended remote broadcasts.
- Our Silencer™ option removes control tones from the audio path.
- Use the DPDT relays to insert the phone audio directly into the program path when necessary, especially for emergencies.



TelTap Pocket-Sized Manual Telephone Coupler

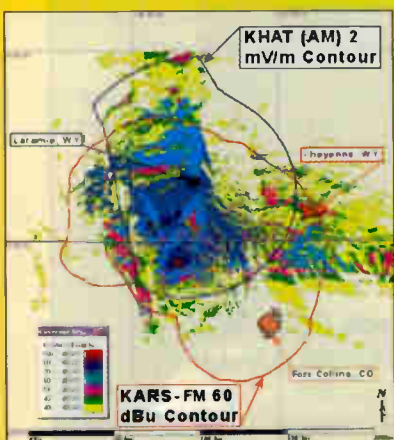
- Can be used as a phone tap or a passive manual telephone coupler.
- Send or receive telephone audio.
- Compact size & low cost makes the TelTap a great addition to your remote kit for main or backup capabilities.

Discover more online at www.circuitwerkes.com



CircuitWerkes, Inc. - 2805 NW 6th Street, Gainesville, Florida 32609, USA. 352-335-6555

rfSoftware has the engineering tools you want and money saving features that you'll love!



rfInvestigator is a tool for analyzing FCC spacing, FCC contours & much more! Population data, LULC data, terrain data, Longley-Rice models, Topo! maps & drive test data can all be displayed in **rfInvestigator**. It offers a host of advanced features, many of which are not found in similar programs or are offered as expensive additions, like a terrain profile tool and our antenna design tool that can automatically calculate your antenna pattern for you. Add our **DB-Builder** program and **never buy another FCC database!** Ever!

Although **rfInvestigator** offers sophisticated features, the user interface is intuitive & simple to use. **rfInvestigator's** power makes it useful to the experienced engineer while its easy-to-use menus make it friendly for station and group owners.

Need AM Tools? Call Us!

rfSoftware, Inc.
innovative engineering tools

Visit us at www.rfsoftware.com or call us at 352-367-1700 for info on our AM & FM tools!

World Radio History

Improving on a Great Product

The Davicom MAC Transmitter Remote Control

Back in 1999, I wrote a User Report about what I described then as the niftiest remote control system I had ever worked with: the Davicom MAC (Monitoring, Alarm and remote Control).

Recently, I installed a set of new MACs at a station in Western Canada. Davicom has redesigned their unit to a new generation, and the results are impressive indeed. With this redesign, they have added many new features that again put it well ahead of the competition – and give it one of the best price/functionality ratios on the market.

QUICK EASY, INSTALLATION

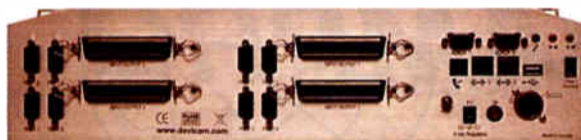
The unit comes with a CD, a quick-start guide, a detailed reference manual, a small wall wart for AC power-loss detection and all the cables (telephone, network, RS-232, USB, 12 VDC) required for quick hook-up. The CD contains the MacComm communication/configuration program as well as the USB drivers and other utility programs. A 12 VDC power supply with battery backup can be purchased from Davicom or you can use your own.

Although I had a few minor problems with the hardware configuration, and there was some lack of clarity in the manual, the installation went very smoothly and the units quickly showed off their versatility. More on this later.



The latest MAC from Davicom.

The new generation is currently available in two models, the MAC208 and MAC216, which both take two rack units of space. (A smaller model is to be announced at NAB.) Besides a 12 VDC power supply, the MACs do not require any more modules or separate relay panels that take up valuable rack space – everything is already mounted inside the unit.



The MAC handles all necessary inputs and control lines without using a separate relay panel.

My installation used MAC216s which have 16 Metering Inputs, 32 Status Inputs, 32 Relays, 128 Logic Gates and 128 Timers (to name just a few features). Davicom is also working on a new firmware update that will make it possible to expand the units as the sites grow by “Ethernet networking” up to eight MACs together.

BROADCAST-FRIENDLY FEATURES

The unit is still “designed for broadcast,” meaning that it has built-in features that are specific to the broadcast world. For example, the MACs are designed for and (according to Davicom) have been tested to operate in electric fields of up to 10 V/m. Units are also “ESD tested” up to 12 kV:

Another “broadcast” feature: you can enter a site’s latitude and longitude into the unit and it will automatically calculate local sunrise and sunset for every day of the year. The resultant Sunrise Flag can then be used as a cross-check for tower lights and other functions. Silence-sensors are built-in (by adding optional True-RMS detector chips into the internal socket).

Two more features that are really useful at a transmitter site are the audio monitoring capability and the RS-232

pass-through function. The first allows you to call a site on the phone and listen to different points in the audio chain. The RS-232 pass-through function lets you connect to the serial ports on other on-site equipment via the MAC’s communication channel.

A prime example of the unit’s versatility was demonstrated recently when we switched to Daylight Saving Time (DST) according to the new Rules. The new MAC has the new switchover dates already loaded into its firmware (but, to be honest, the older units also allowed user-settable switchover dates to be programmed yearly).

I like the fact that the unit does *not* require a computer or other device be connected to it constantly for proper operation. In fact, the Davicom MAC itself has no moving parts such as fans or hard disk drives.

I find that this enhances reliability, since we all know how PCs have a tendency to be fickle.

LOGICALLY PROGRAMMED

One aspect of the Davicom that does require a different mind-set is the way they are programmed for automation. Instead of using a script language and macro commands, you use logic diagrams.

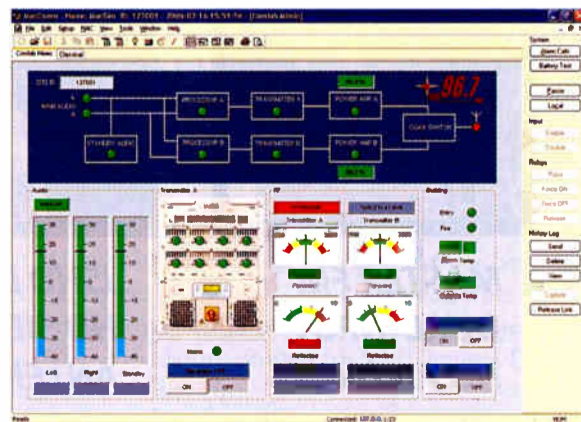
Each input to – and output from – the unit, as well as all the internal flags and timers, can be used as inputs for virtual logic gates that you program. What this means is that starting from a simple (or complex) logic diagram of the gates, timers and delays you need, you then can program the unit to act upon these conditions to automatically control outputs and/or to send alarms.

Furthermore, the alarms themselves can be “gated” to eliminate nuisances or to send them to *different* persons depending on different factors such as time of day, day of week or even type of alarm. The new Davicom has eight separate call-lists for major alarms and eight more for minor alarms, and these alarms can be called out in an impressive variety of ways.

With no additional hardware besides the built-in modem, the Davicom can make voice calls to landline phones, cell phones or vocal pagers; they can send faxes, e-mail, SNMP Traps, and data to a PC; they also can send pages to DTMF or alphanumeric pagers. A wireless link can be used as a backup for the landline.

EASY PROGRAMMING AND SECURE CONTROL

Control of the Davicom is done via DTMF (on the telephone network) or on a PC (via modem or Ethernet/Internet). Configuring and programming is done with the Windows-based MacComm software and can be done from anywhere in the world by modem or over the Internet.



A typical display page.

Speaking of the Internet, Davicom has ensured that communication with the unit remains secure thanks to 128

bit AES encryption. Security is further enhanced by the use of four different access levels that are password-controlled and user-name tracked. Up to 16 different users can be created in the unit’s configuration, and four separate users can access the unit simultaneously (although only one will be in control).

SOLID TECH SUPPORT

It must be mentioned that the company’s e-mail and telephone technical support are exceptionally good. They are quick to respond to questions and can often implement a bug-fix in a firmware or software revision within a few days. They are also very open to integrating non-urgent customer requests and suggestions into subsequent firmware/software versions.

During the recent installation I ran into a few snags with the new units. One issue revolved around the voltage levels read by the status inputs. Another issue involved the new MAC’s “bilingual” capability.

On my preceding installations, I had used diodes to create logical OR gates in order to save on the number of status inputs required. On the new units, an internal hardware change caused the inputs to have a different behavior from the input of older units. Even though they were both operating according to their specifications, I would have liked the new units to better mimic the voltage levels of the old units.

Fortunately, after discussing the problem with Davicom’s technical support staff, they quickly proposed an easy fix that would allow my preceding circuit designs to be re-used with the new unit.

SPEAKING THE RIGHT LANGUAGE

The bilingual feature allows supervisors to configure the unit to respond to different users in one of two different languages according to their preference. It works well, as long as you configure carefully.

At one point during this installation, there were two fields in which we had to enter input and alarm descriptions. Unknowingly, we had entered the English description in the Unicode field (that cannot be sent via FAX or alphanumeric pager – which we needed). Again, a quick call to tech support and some “cut & paste” quickly resolved the problem.

To sum up: Davicom has been manufacturing the MACs since 1994, and their constant improvement over the years has ensured that they are still the niftiest remote control around.

John McCloy is a self-employed installer and designer of technical equipment who has been in the broadcast field for close to 25 years. He can be reached at jmccloy@cogeco.ca

Wanted: Chief Engineer



Morris Communications Company, owner of Salina Media Group in Salina, KS has an opening for a Radio Chief Engineer.

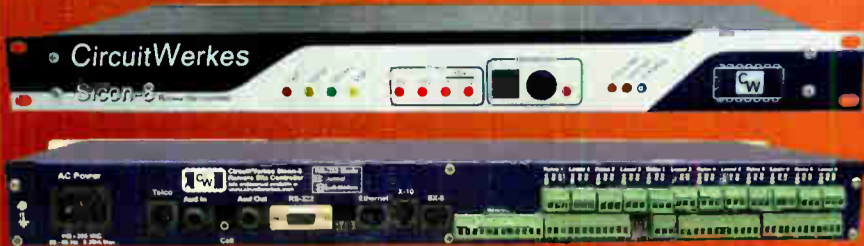
The stations are in good shape, and we’re looking for a radio veteran with at least 5-7 years experience as a Chief Engineer. Most of the IT and Hard Disk Automation work is handled in-house by the local IT expert or corporately, so this position will encompass the transmitter, studio and only a little IT, but you need to understand automation and computers anyway.

You’ll be in charge of the technical operations for 4 FM and 2 AM stations in Salina and Abilene. We expect to see a resume with a great deal of experience in AM directional, AM and FM transmitters, compliance, leadership, maintenance, projects, and hard disk automation. We have high standards for our products and we don’t cut corners. We need you to be able to fix something permanently, quickly and economically. We’ll give you all the resources you need to get the job done.

In return for your dedication and hard work, you’ll be paid a great salary, outstanding benefits, and a 401(K) program the company will pay into.

E-mail your resume to jay.white@morris.com. Morris Communications Company, LLC is an Equal Opportunity Employer.

The New Sicon-8 Voice Remote Control



The CircuitWerkes Sicon-8 Voice Remote Control

- ▶ Use our pre-recorded voice responses or record your own!
- ▶ 8 channels of metering, status and control (expandable to 16) and up to 5 alarms per channel.
- ▶ No accessories necessary to control your site right out of the box.
- ▶ Auto-ranging, auto-calibrating meters make setup a snap.
- ▶ Function scheduler, auto-logging & alarm reporting included.

Introducing the Sicon-8, a revolutionary transmitter site controller with custom voice recording technology for perfectly natural sounding dial-up or radio link control. All of the I/O, including 8 channels of relays, are included on the main board so there is no need to buy anything else. All metering, status and control connections are on depluggable screw terminals. An expander chassis, the SX-8, adds eight channels of metering, status & control to an existing Sicon-8 for a maximum of 16 channels. Designed to be controlled from any dial-up telephone, an auto-answer cell phone or from its serial port, the Sicon-8 gives you the control options that you need. A free, Windows program, the Siconcontroller, gives you full access to all of the Sicon-8's programming and control functions. Basic logging functions are included. Live Internet interfacing is accomplished with an inexpensive accessory. Visit us online at www.circuitwerkes.com for complete info on the Sicon-8.

Remote Broadcast Solutions



MicTel Mic/Line to Telephone Interface

- ▶ Outputs & Inputs for telephone handset, cellular phone or balanced line level at up to +10dBm.
- ▶ Operates up to 36+ hours on two 9V alkaline batteries.
- ▶ High quality, user-switchable, internal limiter prevents clipping.
- ▶ External power input with silent, auto-switching battery backup.
- ▶ Individual gain controls for send, receive and headphones levels.



Unattended Dial-Up Broadcasts with the DR-10

- ▶ The DR-10 is a Dial-Up remote control with balanced, telephone audio input & output that can control many automation systems or your audio console for unattended remote broadcasts.
- ▶ Our Silencer™ option removes control tones from the audio path
- ▶ Use the DPDT relays to insert the phone audio directly into the program path when necessary, especially for emergencies.



TelTap Pocket-Sized Manual Telephone Coupler

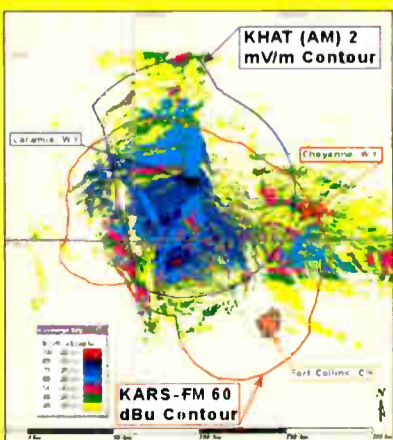
- ▶ Can be used as a phone tap or a passive manual telephone coupler.
- ▶ Send or receive telephone audio.
- ▶ Compact size & low cost makes the TelTap a great addition to your remote kit for main or backup capabilities.

Discover more online at www.circuitwerkes.com



CircuitWerkes, Inc. - 2805 NW 6th Street, Gainesville, Florida 32609, USA. 352-335-6555

rfSoftware has the engineering tools you want and money saving features that you'll love!



rfInvestigator is a tool for analyzing FCC spacing, FCC contours & much more! Population data, LULC data, terrain data, Longley-Rice models, Topo! maps & drive test data can all be displayed in **rfInvestigator**. It offers a host of advanced features, many of which are not found in similar programs or are offered as expensive additions, like a terrain profile tool and our antenna design tool that can automatically calculate your antenna pattern for you. Add our **DB-Builder** program and **never buy another FCC database!** Ever!

Although **rfInvestigator** offers sophisticated features, the user interface is intuitive & simple to use. **rfInvestigator's** power makes it useful to the experienced engineer while its easy-to-use menus make it friendly for station and group owners.

Need AM Tools? Call Us!

rfSoftware, Inc.
innovative engineering tools

Visit us at www.rfsoftware.com or call us at 352-367-1700 for info on our AM & FM tools!

by George Zahn

Blast From Past a Learning Experience

The first thing we should all learn as broadcast professionals is that the minute we think we know pretty much everything about a subject, that cockiness is bound to sneak up behind us and (well, to put it nicely) give us a quick boot to the seat of the pants.

In contributing to *Radio Guide*, I have received some enlightening and intriguing correspondence about microphones. Even after some thirty years in the broadcast business and more than a decade of teaching audio production, I am struck by how immersed we can be in our field, yet it seems we only swim in a small part of the giant audio aquarium.

A READER'S QUERY

As an example, witness this recent e-mail from Jim Jenkins, the owner and General Manager of WAGS-AM Radio in Bishopville, South Carolina:

"Your article in *Radio Guide* prompted me to ask about the ElectroVoice Model 676. One was here at WAGS when I bought the station in November 2000 (My first venture into radio since college in 68)."

Jenkins says, "It sounds pretty good on AM, with very little audio processing (I suppose almost none) going into the Gates BC-1F. Compared to the SM 58 and some other microphones people have brought by it sounds just fine. Can you tell me anything about it?"

DIGGING FOR HISTORY

This one sent me searching, because while I had had experience with a number of different ElectroVoice models (one of my first radio jobs was in a news/sports department with the great old hammer, the 635A dynamic microphone) and I have done my share of announce work on RE20's, I had never encountered the 676. Jim inadvertently sent me on an exploration that took me to the glory days of blues, classic rock, and a Star Wars flashback!

The ElectroVoice 676 is a dynamic microphone (dynamics are pretty much the specialty of ElectroVoice) that was introduced in the mid-1960s and found its way into technical notation on some early 1970s recordings.

One of the earliest notations I could find was on Dave "Snaker" Ray's website (jdray.com) which listed the 676 as a kick drum microphone on a session with blues man "Spider" John Koerner on the album entitled "Music Is Just a Bunch of Notes" recorded in May, 1972 at Sweet Jane studios in Minneapolis.



An ad for the 676 touts its ability to handle high sound levels.

The 676 served ably as a kick drum microphone on the session, a great test of a truly dependable dynamic microphone. It simply had to handle high sound pressure levels. There are several forums that indicate the 676 was a staple on many recordings by Jim Morrison and the Doors. If you are fascinated by reading technical specifications on recordings, you will find the 676 used in applications in the 1960s and 1970s, with a simple Internet search.

TRUST THE MIC, LUKE

What I actually loved about discovering this microphone was the psychedelic-era design. Photos of the microphone will remind you of Luke Skywalker's light saber.



Would a Jedi use an EV 676?

Phantom Productions in Alpine, Texas and Tone Float Productions in New York City still list this very "mod" chrome beauty with highly visible ports as available for recording in their studios. Not surprisingly, it appears that the studios/stations who still revere the 676 and its kin are also those who still offer, and even actively embrace, the fuzzy comfort of analog tape recording.

The on-line source Mosslive.com is a repository for information on live music and recording in the northwestern U.S., and they featured Oregon musician/producer Eric Lovre (to whom I owe the original light saber analogy). Lovre has performed and recorded worldwide, and still lists the 676 as one of his top five microphones for recording music, along with other vintage choices, the ElectroVoice 664, the Shure SM 57, the Astatic 77, and the Shure 51.

In the Mosslive interview, Lovre confesses that he uses tube amplifiers and these classic microphones along with analog recording because in his words "that's the way sound is" – these microphones simply "gel" with the sound he is seeking.

A FITTING MICROPHONE

Likewise the EV 676 fits beautifully with the vintage offerings on Jim Jenkins' AM station, WAGS. As Jenkins puts it, "WAGS Radio is live radio – real people in real time playing from CDs, LPs, 45s, and yes some 78s. Country, traditional Country, we can cry in our beer and do. I've been in the radio biz since Nov 2000 and don't buy into all the plastic stuff we see today."

Jenkins is a real rarity in the radio business, a General Manager with extensive technical and engineering experience. I asked Mr. Jenkins to give us some details on his broadcast chain that starts with his historic 676. The chain is delightfully low tech on the front end, but yields the results he is seeking.



Jim Jenkins and his ElectroVoice 676 microphone.

The 676, turntable pre-amps, and CD player are mixed through a Behringer MX2004A with no EQ modification at the console. The mixer output then is routed through a Radio Shack EQ that came with WAGS when Jenkins bought the station in 2000. The EQ is flat in the bass range, then starts boosting the midrange at about 500 Hz, peaking at +7 dB at 1.7 kHz and +6 dB at 3 kHz, then rolling back to 0 above 5 kHz.

The EQ output then enters an Alesis 3630 compressor-limiter in mono mode. Side one of the Alesis, according to Jenkins, is set "Threshold: -20; Ratio: 4:1; Attack: 50 ms; Release: 500 ms; Output: +10; Soft Knee button: out." The output from the first part of the Alesis is fed to the second part to limit. Settings are: "Threshold: -10; Ratio: infinity:1; Attack: 50 ms; Release: 500 ms; Output: +10; Soft Knee button: out."

From the Alesis, Jenkins continues, "The audio passes through a choke on each wire (course wire around ferrite rod, rated 100 microhenries at 1 kHz, 2 Amp maximum) to stop RF from making lights on the Alesis light up when the transmitter is on. From there it goes to the audio input terminal board inside the Gates BC-1F."

A VALUABLE LESSON

If you are trying to find a 676 for your studio – or your collection – a quick recent check on eBay showed a number of options ranging from a few bucks to just under \$160. As with any purchase of a used item online, it is often difficult to gauge the working status of the device – so buyer beware. But if you are adept at repairs, you might find a cheap "fixer-upper."

Here is the real lesson we learn from stories such as Jim Jenkins' 676 microphone: in today's all digital, all "brand spanking new" world, we are inundated with ads that promote the newest, the latest, and supposedly the best in technology. As broadcasters, we have to discover often there are no absolute right or wrong answers when we chose equipment. Just because something looks like an artifact does not mean it should be retired to the Smithsonian.

The music industry has acknowledged this for years. Many artists still insist on recording to analog tape for the first generation, then utilizing the luxury of digital editing later in the production. The analog recording still gives these artists the grittier, more natural, throwback sound they are seeking. According to Eric Lovre in the Mosslive.com interview, "People have warmed up to the sound (of analog), corrected the hard edges of digital audio."

Likewise, if the microphone fits what we are broadcasting, should we not use it? Just as the music industry still uses a wide array of the classic dynamic, condenser, ribbon, and tube microphones we have discussed in recent months in *Radio Guide*, many stations have stepped forward to preserve some great technological history, not just under a glass case, but live and immediately on the air today!

What is your favorite microphone? Why so? Let us know what has worked best – or the worst – for you. Send email to George at g Zahn@lifesphere.org

Radio Guide on CD

Version 2.7 of the Broadcaster's Desktop Reference Now Includes PDF Archives of Radio Guide

Get every issue of Radio Guide since January 2003. The BDR CD also includes several sets of Radio software utilities, as well as EAS printer paper sources, project schematics, historical data and pictures. A table of contents can be found at: www.olderadio.com/bdr.htm



Credit Card Payments Accepted On-Line at:

www.radio-guide.com/products.html



MT-MR Platinum STL System



Why the MT-MR Platinum?

For its **excellent quality-price value**.
For its **adjustable transmission power** output from 0 to 20W for any selected operational frequency.

For its **double conversion receiver** that makes it apt for **digital codification** (Up to 4 audio channels).

For being **digitally synthesized** in 20 MHz operational band for frequencies from 150 MHz to 960 MHz.

For the fact that **both the transmitter and receiver can measure the modulation percentage and pilot signal level** (19 KHz stereo without disconnecting the audio from the transmitter).

For its **remote control**.

For its **analog telemetry**.

For being made for **mono or stereo (MPX) signal**.

For its **capability to work with IAC power voltage from 90 to 250 V, 50/60 Hz**, and also with external battery if needed.

OMB, the **F**uture of **C**ommunication



OMB AMERICA
phone. (305) 477-0973
(305) 477-0974
fax. (305) 477-0611

3100 NW 72nd. Ave. Unit 112
MIAMI, Florida 33122 USA
<http://www.omb.com>
usa@omb.com

WHY NOT SWITCH TO MCI? COMPLETE FM/TV PRODUCT LINE



Coax switches from
7/8" through 6-1/8"
Control panels available.

- ANTENNAS
- SPLITTERS
- NOTCH FILTERS
- HARMONIC FILTERS
- POWER COMBINERS
- CHANNEL COMBINERS
- N +1 SWITCHING MATRIX

Free UPS Ground shipping within the continental USA and Canada - SWITCHES ONLY



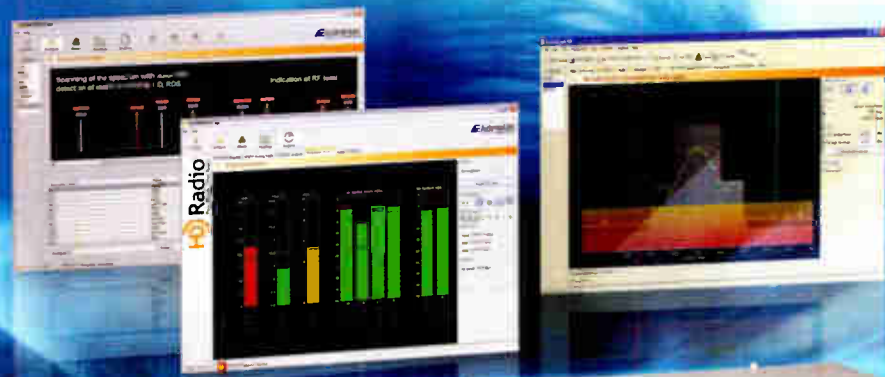
Micro Communications, Inc.

Toll Free: 800-545-0608

www.mcibroadcast.com



BROADCASTERS #1 CHOICE FOR HD MONITORING!



- MODULATION MONITORING
- NRSC MASK COMPLIANCE
- TIME ALIGNMENT MONITORING
- SILENCE SENSING/ANALOG, HD1, HD2 ...
- PSD & RDS DATA MONITORING
- MONITORING OF MULTIPLE STATIONS
- EMBEDDED WEB SERVER & ALARM NOTIFICATION VIA EMAIL, VOICE INTERFACE

HD Radio
Pure Digital. Clear Radio.

GOLDENEAGLE HD WITH SPECTRUM ANALYZER AND DIGITAL DEMODULATOR

Audemat-Aztec
Broadcasting Innovation

<http://www.goldeneagle-hd.com>
Miami, FL USA - Tel: 305 249 3110 - ussales@audemat-aztec.com

Operations

Guide

by Rich Wood

Wanted: More HD Ears

With the present reduced staffing levels at many stations, it is sadly not uncommon to find no live staffer monitoring things – and the station's sound signature becomes "dead air." As Rich Wood points out, if HD Radio is left alone without someone paying attention, there is a new set of things that can go wrong.

If a tree falls in the forest and no one hears it, does it make noise? How about a radio station with no audio?

Nowhere does this apply more than in the *Catch-22* situation of monitoring HD Radio with multiple programs on one carrier.

A NEW PROBLEM

HD Radio has nested *Catch-22s* in the sense that most digital receivers have no way of forcing the radio back to analog if the HD signal exists but no audio accompanies it.

Like many of you, I own an HD radio. Whether or not you support the IBOC system as currently engineered is not important. The number of stations broadcasting it is also not important. The number of receivers is.

Since each of our futures will be affected by its success, I often spot check the stations I can hear to see how important the digital signals are to those responsible for seeing that they make noise. Sadly, I hear a lot of dead air. Perhaps sadder, when I call a station to tell them their digital signals are dead they often see me as a troublemaker rather than a concerned broadcaster/listener.

Is it any wonder that many retailers see little reason to "feature" an unreliable source to show off HD receivers? The head of the HD Alliance has practically been begging stations to pay attention to their digital signals. Unless those signals are there 24/7 retailers will find little reason to display (and consumers will find little reason to buy) HD receivers.

In my market, only two retailers carry IBOC receivers – and one is about to close most of its stores.

MULTICHANNEL PROBLEM

I understand the anger directed at me by engineers who have so much to do that they cannot be devoting a lot of listening time to channels that have so few listeners they can be counted without taking shoes off.

This leaves us with trying to find a way to monitor the HD signal without taking the engineer away from some revenue-generating activity. Stations that have invested great sums of money in this system need to be sure the same reliability exists in digital as it does in analog. Would you allow your analog signal to transmit dead air for days at a time?

Of course, this technology is based on computers that have a tendency to lock up. In my experience, rebooting fixes the problem. But some live person needs to be alert and available to do this.

SOMEONE TO HANDLE IT

Recently, I ran across a station whose audio system had locked up, repeating a six-second loop of audio for hours. There was audio, so the silence sense saw nothing wrong and kept quiet. Another station ran double spots – one on top of the other – for two hours before anyone noticed. Again, there was audio, so the technical monitor saw no problem.

This is why the monitoring of digital channels must include human ears. Those ears do not have to be critical listeners. They simply have to hear that something is happening: if there is an obvious problem, bring in the engineer to reboot or fix the system.

Nevertheless, we may have reached the point where we need to take the engineer out of the monitoring loop. With some facilities running 12, 16 or more program channels, the Program Directors or Station Managers are unable to do it all, either. They have revenue-generating duties, as well.

On the other hand, most stations do routinely assign salespeople to monitor competing stations, in order to see what commercials they are running. So there should be someone with a few seconds an hour somewhere in the station to check the digital.

THE SOLUTION

Here is the simple solution: each station *must assign someone*, probably the receptionist (after all, her title spells it out!), to spot check the program channels; every hour or so someone should swing through the digital channels to make sure *something* is there.

For obvious reasons, any cluster's ceiling monitors are limited to one station at a time. One small solution for a single station is to feed the PA system with the digital signal. Nothing makes people in a radio station move faster than silence.

Often the ceiling monitor rotates the stations in a cluster to make the programming folks feel they share equal importance. If you can, set the receiver to remain in digital mode at all times. Your analog has plenty of ears paying attention. Someone should be ready to notice a problem when one surfaces.

Again, regardless of your feelings about HD Radio, the station has a responsibility to its digital future and that of everyone else using it to be sure a signal that will sell receivers is operating. In my opinion, everyone is in this together. Stations must provide reliable signals and retailers must ensure they can be received on display models.

A frequent contributor to Radio Guide, Rich Wood has a long history of experience in programming and station operations. Contact him at richwood@pobox.com

Tech

Tip

by Warren Shulz

Adding an Extra Button Reduces Surprises

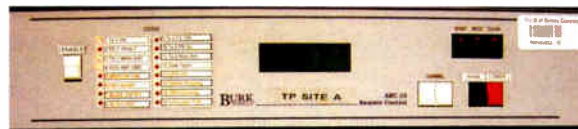
After walking up to the Burk ARC-16 more than a few times and getting the channel step up/down buttons confused with the function raise/lower buttons – and a resulting undesired action – it became apparent a remedy was needed.

UP/DOWN OR RAISE/LOWER

The original design of the ARC-16 used four white buttons on the lower right of the unit to handle both the selection of the desired remote control channel and the control actions themselves.

Although labeled on the ARC-16, it was nonetheless easy to mistake the buttons, especially when in a hurry. However, I reasoned that if you had some sort of momentary fail-safe, it would practically eliminate mistaken raise/lower actions.

This modification we made is a somewhat involved and difficult job and not for the faint of heart. You have to disassemble the front panel (and display) and add a push button in an open area on the panel to left of status display. This requires drilling and filing a square hole into the front panel. (A less pretty but quicker alternative might be to use a round button.)



The "Enable" button on the left prevents unintended actions.

Although I have done this to at least eight units – and it does take a lot of time – all of them were successful. The result is you no longer get a "raise" when you meant to change/scroll up one channel. It now takes two buttons to get a raise/lower action.

MAKING THE MODIFICATION

How is it wired? First, you cut the trace between S2 (Channel up) and S5 (Maintenance). This opens the raise/lower from pulling to ground. Then you will need to restore ground for S1 (Channel Down) and S2 Channel Up).

The new button takes up that cut trace from between S2 and S5. When the new enable button is held down it provides ground to S3 (Raise) and S4 (Lower).

A jumper from the enable to the mode LED gives you a red LED when the enable button is pressed. The enable button is identical to other push button switches in use.



Carefully installed, it almost looks like a factory button.

I would consider this a major modification to the ARC-16, and I did share the idea with Peter Burk. Subsequent ARC-16 units came with different colored raise/lower buttons as a solution. While this is an answer, I surely still prefer the need for two buttons to be pressed simultaneously to fire off any action.

Warren Shulz is the Chief Engineer at WLS in Chicago, IL. Over the years, Warren has discovered a lot of ways to reduce operator error, and is happy to share them all. His email address is: Warren.G.Shulz@abc.com

Need Some Help?

Sign up today for the Technical Assistance mailing list.

www.radiolists.net

PHASETEK INC.

Quality

PHASETEK'S manufacturing facility and components expertise are available to design and fabricate any type of inductor or special RF component.

Our engineering and production staff's years of experience and commitment to quality are available to fill any special requirements.

Dependable

RELIABLE & DEPENDABLE RF COMPONENTS & PARTS

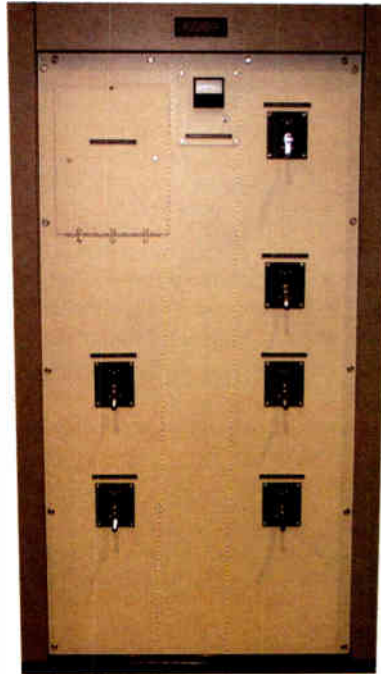
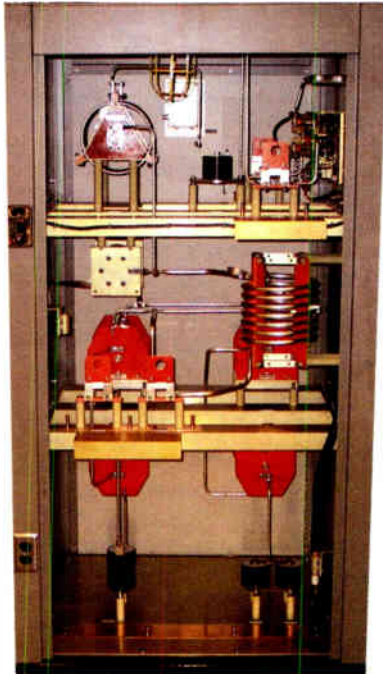
- Variable & Fixed Inductors
- Variable & Fixed Vacuum Capacitors
- Fixed Mica Capacitors
- RF Contactors
- Vacuum RF Contactors
- Test Jacks and Accessories
- Static Drain and Lighting Chokes
- Isolation Inductors
- Sampling Loops
- Dial Counters and Couplers
- Transmission Line Terminations
- Ribbon Clips and Tubing Clamps
- Horn Gaps
- Toroidal Current Transformers
- And More!

550 California Road, Unit 11
Quakertown, PA 18951

Phone: 800-742-7383 215-536-6648
Fax: 215-536-7180 Email: kgpti@epix.net
Website: www.phasetekinc.com

Custom Manufactured

- Antenna Phasing Systems
- Control Systems
- AM/MF Antenna Tuning Units
- Diplexers (NDA/DA and expanded band)
- Triplexers
- Transmitter Combiners
- Dummy Loads (with matching networks)
- Tower Detuning Units/Skirts
- Broadband Matching Networks
- Tunable Skirt Assemblies (TSA's)
- Isolation Transformers



Custom Phasing Systems

Experience

Phasetek's experienced staff of engineers and production personnel are dedicated to provide the broadcast industry the highest quality, custom designed phasing equipment.

Value

- OTHER SERVICES AVAILABLE:**
- Phasing System Design
 - Engineering & Technical Field Support
 - AM & FM Installations.

When You Want More Than Just An Antenna



**Full line of HD Radio Accessories:
Circulators, Mask Filters,
Reject Tuners, and Rigid Components.**



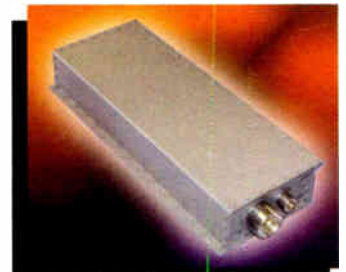
Made in USA since 1954



**MASTER FM
DUAL INPUT
HD ANTENNA**



**JSHD DUAL INPUT
HD SIDEMOUNT
ANTENNA**



**RCHA 10dB
HIGH LEVEL
HD INJECTOR**

JAMPRO ANTENNAS/RF SYSTEMS, INC. • P.O. Box 292880 • Sacramento, CA 92829 USA • Phone (916) 383-1177 • Fax (916) 383-1182 • www.jampro.com Your Partner for HD Radio Solutions



by John McCloy

Improving on a Great Product

The Davicom MAC Transmitter Remote Control

Back in 1999, I wrote a User Report about what I described then as the niftiest remote control system I had ever worked with: the Davicom MAC (Monitoring, Alarm and remote Control).

Recently, I installed a set of new MACs at a station in Western Canada. Davicom has redesigned their unit to a new generation, and the results are impressive indeed. With this redesign, they have added many new features that again put it well ahead of the competition – and give it one of the best price/functionality ratios on the market.

QUICK EASY, INSTALLATION

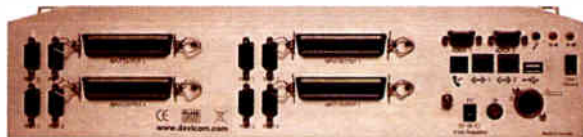
The unit comes with a CD, a quick-start guide, a detailed reference manual, a small wall wart for AC power-loss detection and all the cables (telephone, network, RS-232, USB, 12 VDC) required for quick hook-up. The CD contains the MacComm communication/configuration program as well as the USB drivers and other utility programs. A 12 VDC power supply with battery backup can be purchased from Davicom or you can use your own.

Although I had a few minor problems with the hardware configuration, and there was some lack of clarity in the manual, the installation went very smoothly and the units quickly showed off their versatility. More on this later.



The latest MAC from Davicom.

The new generation is currently available in two models, the MAC208 and MAC216, which both take two rack units of space. (A smaller model is to be announced at NAB.) Besides a 12 VDC power supply, the MACs do not require any more modules or separate relay panels that take up valuable rack space – everything is already mounted inside the unit.



The MAC handles all necessary inputs and control lines without using a separate relay panel.

My installation used MAC216s which have 16 Metering Inputs, 32 Status Inputs, 32 Relays, 128 Logic Gates and 128 Timers (to name just a few features). Davicom is also working on a new firmware update that will make it possible to expand the units as the sites grow by “Ethernet networking” up to eight MACs together.

BROADCAST-FRIENDLY FEATURES

The unit is still “designed for broadcast,” meaning that it has built-in features that are specific to the broadcast world. For example, the MACs are designed for and (according to Davicom) have been tested to operate in electric fields of up to 10 V/m. Units are also “ESD tested” up to 12 kV.

Another “broadcast” feature: you can enter a site’s latitude and longitude into the unit and it will automatically calculate local sunrise and sunset for every day of the year. The resultant Sunrise Flag can then be used as a cross-check for tower lights and other functions. Silence-sensors are built-in (by adding optional True-RMS detector chips into the internal socket).

Two more features that are really useful at a transmitter site are the audio monitoring capability and the RS-232

pass-through function. The first allows you to call a site on the phone and listen to different points in the audio chain. The RS-232 pass-through function lets you can connect to the serial ports on other on-site equipment via the MAC’s communication channel.

A prime example of the unit’s versatility was demonstrated recently when we switched to Daylight Saving Time (DST) according to the new Rules. The new MAC has the new switchover dates already loaded into its firmware (but, to be honest, the older units also allowed user-settable switchover dates to be programmed yearly).

I like the fact that the unit does *not* require a computer or other device be connected to it constantly for proper operation. In fact, the Davicom MAC itself has no moving parts such as fans or hard disk drives.

I find that this enhances reliability, since we all know how PCs have a tendency to be fickle.

LOGICALLY PROGRAMMED

One aspect of the Davicom that does require a different mind-set is the way they are programmed for automation. Instead of using a script language and macro commands, you use logic diagrams.

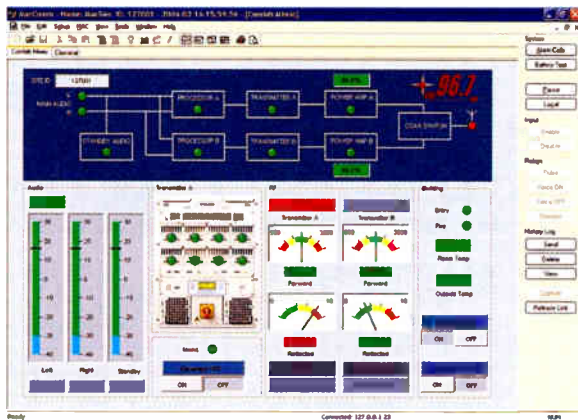
Each input to – and output from – the unit, as well as all the internal flags and timers, can be used as inputs for virtual logic gates that you program. What this means is that starting from a simple (or complex) logic diagram of the gates, timers and delays you need, you then can program the unit to act upon these conditions to automatically control outputs and/or to send alarms.

Furthermore, the alarms themselves can be “gated” to eliminate nuisances or to send them to *different* persons depending on different factors such as time of day, day of week or even type of alarm. The new Davicom has eight separate call-lists for major alarms and eight more for minor alarms, and these alarms can be called out in an impressive variety of ways.

With no additional hardware besides the built-in modem, the Davicom can make voice calls to landline phones, cell phones or vocal pagers; they can send faxes, e-mail, SNMP Traps, and data to a PC; they also can send pages to DTMF or alphanumeric pagers. A wireless link can be used as a backup for the landline.

EASY PROGRAMMING AND SECURE CONTROL

Control of the Davicom is done via DTMF (on the telephone network) or on a PC (via modem or Ethernet/Internet). Configuring and programming is done with the Windows-based MacComm software and can be done from anywhere in the world by modem or over the Internet.



A typical display page.

Speaking of the Internet, Davicom has ensured that communication with the unit remains secure thanks to 128

bit AES encryption. Security is further enhanced by the use of four different access levels that are password-controlled and user-name tracked. Up to 16 different users can be created in the unit’s configuration, and four separate users can access the unit simultaneously (although only one will be in control).

SOLID TECH SUPPORT

It must be mentioned that the company’s e-mail and telephone technical support are exceptionally good. They are quick to respond to questions and can often implement a bug-fix in a firmware or software revision within a few days. They are also very open to integrating non-urgent customer requests and suggestions into subsequent firmware/software versions.

During the recent installation I ran into a few snags with the new units. One issue revolved around the voltage levels read by the status inputs. Another issue involved the new MAC’s “bilingual” capability.

On my preceding installations, I had used diodes to create logical OR gates in order to save on the number of status inputs required. On the new units, an internal hardware change caused the inputs to have a different behavior from the input of older units. Even though they were both operating according to their specifications, I would have liked the new units to better mimic the voltage levels of the old units.

Fortunately, after discussing the problem with Davicom’s technical support staff, they quickly proposed an easy fix that would allow my preceding circuit designs to be re-used with the new unit.

SPEAKING THE RIGHT LANGUAGE

The bilingual feature allows supervisors to configure the unit to respond to different users in one of two different languages according to their preference. It works well, as long as you configure carefully.

At one point during this installation, there were two fields in which we had to enter input and alarm descriptions. Unknowingly, we had entered the English description in the Unicode field (that cannot be sent via FAX or alphanumeric pager – which we needed). Again, a quick call to tech support and some “cut & paste” quickly resolved the problem.

To sum up: Davicom has been manufacturing the MACs since 1994, and their constant improvement over the years has ensured that they are still the niftiest remote control around.

John McCloy is a self-employed installer and designer of technical equipment who has been in the broadcast field for close to 25 years. He can be reached at jsmccloy@cogeco.ca

Wanted: Chief Engineer



Morris Communications Company, owner of Salina Media Group in Salina, KS has an opening for a Radio Chief Engineer.

The stations are in good shape, and we’re looking for a radio veteran with at least 5-7 years experience as a Chief Engineer. Most of the IT and Hard Disk Automation work is handled in-house by the local IT expert or corporately, so this position will encompass the transmitter, studio and only a little IT, but you need to understand automation and computers anyway.

You’ll be in charge of the technical operations for 4 FM and 2 AM stations in Salina and Abilene. We expect to see a resume with a great deal of experience in AM directional, AM and FM transmitters, compliance, leadership, maintenance, projects, and hard disk automation. We have high standards for our products and we don’t cut corners. We need you to be able to fix something permanently, quickly and economically. We’ll give you all the resources you need to get the job done.

In return for your dedication and hard work, you’ll be paid a great salary, outstanding benefits, and a 401(K) program the company will pay into.

E-mail your resume to jay.white@morris.com. Morris Communications Company, LLC is an Equal Opportunity Employer.



* Gibraltar IV Series
* Horizon to Horizon

* Standard AZ-EL
* Heavy Duty Polar

ANTENNAS

ANTENNAS

ANTENNAS

ANTENNAS

ANTENNAS

COMMERCIAL QUALITY
(6m 9m 10m 1.2m 1.5m 1.8m 2.4m 2.7m 3.0m 3.3m 3.7m 3.9m 4.2m 4.5m 5.0m)

Call For Info

800-627-9443 608-326-8406

www.dhsatellite.com

Offering:

- * Feed Horns
- * LNB's
- * Multi-Cable
- * Receivers
- * Controllers
- * Antenna Covers
- * Custom Fabrications

OVER 600,000 Manufactured

- * High Efficiency
- * Custom Fabrications
- * Fast Direct Delivery
- * 5 Year Warranty

Fax: 608-326-4233
Email: dhsat@mhtc.net

Buy Factory Direct & Save!



ECONCO

Rebuilt Power Tubes



Approximately
One Half the Cost of New
3,000 Hour Unconditional Guarantee
Call for Your Quotation

ECONCO 1318 Commerce Ave., Woodland, CA 95776
Phone: 530-662-7553 Fax: 530-666-7760
Toll Free: 800-532-6626 Website: www.econco.com

Indecency Processor

Helps cope with digital delays in the program airchain


No, this product doesn't remove naughty words, but if you do run a profanity delay or simply have a buildup of digital latency, talent can't listen to the processed air signal. Instead, their feed is probably direct from the console. Compared to the air sound, this can seem weak, dull and lifeless.

Our Model 255 Triband Spectral Loading™ processor has zero delay and can deliver a dense, tight, and punchy 'broadcast' sound to headphones and control room speakers... a sound you can't achieve with a general-purpose "utility compressor."


The 255 is equally well-suited to program airchain processing tasks. Built-in pre-emphasis protection limiting makes the 255 an ideal companion to LPFM excitors with built-in stereo generators.

Other off-line applications include "tight sound" production studio processing, and program feeds to telephone hybrids and IFB systems.

Model 255 - \$2100



For full technical details, visit www.inovon.com



Inovonics

1305 Fair Ave. • Santa Cruz, CA 95060
TEL: (831) 458-0552 • FAX: (831) 458-0554
www.inovon.com • e-mail: info@inovon.com

Audio File Standards for the Broadcast Industry

Most broadcasters work hard to present the cleanest audio possible. However, there is one part of the chain – hard to measure with traditional test gear – that can undo your careful effort at quality. To avoid distortion from “stacked algorithms” Jeff Schroeder suggests we get together as an industry and create standards for incoming audio files.

It began when we got the first CD decks in our on-air studios. “Now in full digital quality, it’s Huey Lewis and the News on KIQY-FM!” I remember saying those exact words at least a dozen times in my “other” life on the air. That was 1985.

Fast forward to 2006 – and for the most part we still are saying the same thing: “Broadcasting in full digital quality.” Only now a very high percentage – if not all – of the music, commercials, jingles, and liners are actually of a much lower audio quality than that first Huey Lewis CD I played from a Technics consumer CD deck back in 1985. What happened?

WE PAUSE FOR A WORD ABOUT AUDIO QUALITY

I can hear you saying: “but we are playing the files in linear file format from a \$3,000 audio card on a \$2,000 computer.” Yes, you are. But, where did the original files come from? iTunes? NewMusicServer? Your friend’s iPod? Or did you actually take the time to rip it from the original CD?

And what about the commercials that are running on your air now? When was the last time you actually got a commercial on a CD or Tape? The vast majority of – if not all – commercials are now delivered in file form.

Have you really ever taken the time to inspect the properties of the audio files coming into your facility? Looked at the sample rate? Bit rate? RMS levels of the audio? Most people have not. The commercial/song/liner simply comes in the building, gets converted to the automation system file format and uploaded.

When I travel around the country I am amazed at some of the audio that I hear on the air – commercials in particular. The sound is so bad that it is often stressful to listen to them.

WHY QUALITY IS SUFFERING

It is clear to anyone literate in producing clean audio that it is getting harder to find. Far too many of the current CDs are already smashed, crunched, and clipped before they get to you. But then they enter the typical broadcast audio chain where stacked compression algorithms are digital audio’s worst enemy. To illustrate, just look at the typical distribution path used today to get audio on the air:

1. Production happens in full digital multi-track editor and mixed down to a linear wave file.

2. The “send out” copy is made from the file and saved in a minimum “standard” 256 kbps MP3 file (with 5.5:1 compression) to save on upload/download bandwidth (*Generation 1*)

3. The local production dude (or dudette) downloads the file and opens an editor to put on the local tag. Then he/she saves the file in 128 kbps MP3 format, compressed 11:1. (*Generation 2*)

4. The file is then sent to the automation system, typically using 4.4:1 compressed MP2. (*Generation 3*)

5. The file makes it to the air. Audio processors and HD exciters add coding *Generation 4 or even 5!*

Sadly, this is sometimes the best case scenario. Often the process is repeated many times over, creating files that are technically digital audio, but sound so bad they should not be played on a \$9 clock radio.

At one time or another, we have all been told by the sales manager that we “must play the commercial” that we received from the client because “it’s \$(insert dollar figure) per minute – and they pay fast!” Even if the file turns out to be a copy of a 6.3:1 MP2 that a station across town pulled of their automation and emailed to you.

(Continued on Page 26)



Drive Time

COMET, the world leader for high voltage vacuum capacitors, leads the next wave of innovation with the Integrated Drive.

The ideal solution for today’s transmitters, antenna tuning, phasing and coupling units; the Integrated Drive is a multi-functional product for the accurate alignment of motors, couplers, and capacitors eliminating the need to source and integrate components from multiple suppliers.

In addition to ensuring 100% accuracy, the Integrated Drive dramatically reduces R&D, procurement and assembly lead-times, and replaces tedious and error-prone manual assembly with a standardized, easy-to-install subsystem. Our single source solution is easily integrated into new and existing applications.

Contact us today for more information!

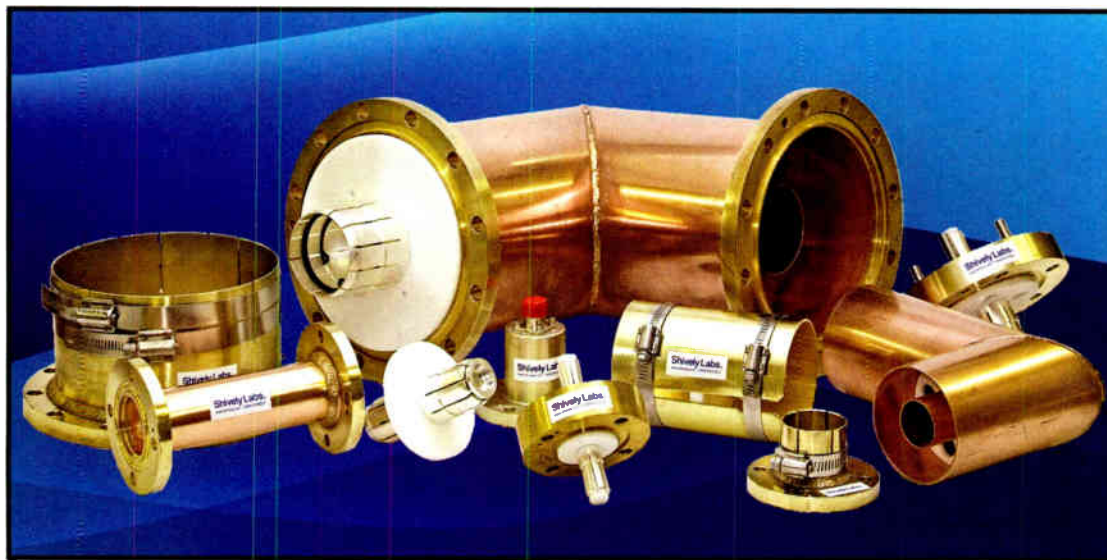
The X-perts for security, inspection, electronics and communication

COMET North America, Inc., 76 Progress Drive, Stamford, CT 06902,
T +1 203 969 2161, F +1 203 969 2162, usa@comet.ch, www.comet.ch

End-to-End Solutions From SCMS

Shively Labs Rigid Coax

Get your **RF** Solutions from the
Dealer That Knows Radio.



Introducing Rigid Coax from Shively Labs.

Redesigned in 2006 – Shively's coax components incorporate more than 40 years of high power RF engineering experience with modern manufacturing techniques to bring you products that are as affordable as they are reliable.

Large inventories ensure same day shipment on most orders, and detail drawings are available at www.shively.com to ensure that there are no surprises when you go to install your components.

**Superior Design –
Fast Shipment –
Low Prices !**



Contact SCMS
at any of its offices
to discuss your needs
1-800-438-6040
Bob, Ernie, Matt or Mike
HQ in Pineville, NC

Mid-South: 1-877-391-2650 Bob Mayben
Central: 1-731-695-1714 Bernie O'Brien
West Coast: 1-866-673-9267 Doug Tharp
Mid-West: 1-513-899-3036 Mary Schnelle
South-Atlantic: 1-770-632-1295 Art White
North-East: 1-315-623-7655 Jim Peck
South-West: 1-210-775-2725 John Lackness
Pro Audio: 1-877-640-8205 Ric Goldstein
Latin America: 1-760-650-1427 Lily Massari

www.SCMSinc.com



Audio Guide

by Jeff Schroeder

Continued from Page 24

CRUCIAL DECISIONS

I clearly remember the very loud outcry about the 4.4:1 MP2 compressed audio coming from PD's when we first started playing music from hard drives on automation computers. This was only 7 to 10 years ago. Oh, how things have changed in this very short time!

We as an industry (Radio) are at a true turning point. With more and more stations turning on HD signals and the added compression algorithm involved with HD, there must be something done about the quality of audio files that we will accept and actually play on our radio stations.

Our listeners now have a vast selection of digital products from which to choose. We have to sound better than those choices in *content and sound*. Content is another subject which must be addressed by all the programming guru's. What I am talking about is the quality of the audio *sound*.

The problem is that currently there are no real standards that would improve this. What is the solution?

EDUCATION

We will take the easy one first: *Education*.

It is imperative that the people who are handling the files (Program Directors, Music Directors, Production People, etc.) learn and *understand* what digital compression is and how it affects the overall quality of the finished product – which is, after all, the on-air sound of your station(s).

Your staff does not have to go out and buy their own copy of *Audio Files for Dummies*. However, if they see a file come into the building that is a 128 kbps MP3, they do need to know enough so that they quickly can identify the file type and "properties" of the file. Then, if necessary, they are able to identify problems and do everything in their power to get that file replaced with a higher quality file.

This point is particularly important for music that will go into the library and be there for a long time.

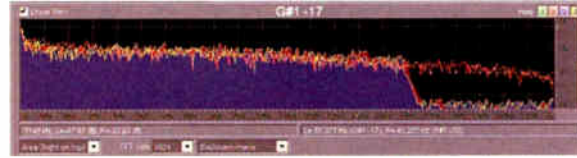
LIFTING THE HOOD ON MP3 FILES

Here is a chart of the compression ratios of MP3 files and the file sizes they generate, compared with a linear file.

MP3 Stereo File Attributes			
Bitrate (kbps)	Bandwidth (Hz)	Comp Ratio	Approx File Size Per Min.
56	22050	25.2:1	440k
64	22050	22.1:1	470k
80	22050	17.6:1	590k
96	44100	14.7:1	700k
112	44100	12.6:1	820k
128	44100	11.0:1	939k
160	44100	8.8:1	1,173k
192	44100	7.4:1	1,408k
224	44100	6.3:1	1,643k
256	44100	5.5:1	1,877k
320	44100	4.4:1	2,346k
Linear	44100	0	10,000k

You can see that the consumer standard of 128 kbps is at 11.0:1 compression. You can also see that the highest quality bit-rate of *any* MP3 file is still running 4.4:1 compression.

A good visual example comes from a current country song on the charts today. A very simple comparison of the frequency spectrum before and after a file is pulled from a CD will be instructive. This is something every one of your production and air people should be able to grasp in an instant.



Comparing native CD audio to an MP3 dub.

The solid lines at the top reflect the frequency response of the original WAV file ripped directly from

the CD. The solid filled-in (blue) part is the exact same section of the song after converting it to 192 kbps MP3. You can see the dramatic and absolute roll-off at 16 kHz. This happens with *every* file converted to MP3 on the very first generation – it is "by design."

This is just the most graphic example of what happens to an audio file being compressed; there are other, more harmful artifacts that happen, but that is something for a future discussion. You cannot reduce the size of an audio file without removing little "pieces" of the audio itself. These pieces can never be replaced and if the file is compressed more than once the audible quality denigration becomes almost exponential.

DEALING WITH THE URGENT NEEDS

Now, I am a realist. I understand that music now is being sent out on "release day" in compressed file format. In a competitive environment, stations have to

(Continued on Page 28)



Ready for Digital. Ready for Anything.



V3.5/V5/V7.5/V10

3.5, 5, 7.5 & 10 kW FM Transmitters

More Versatility

- Digital adaptive pre-correction
- Integrated Engine
- Programmable pre-selections for frequency, power and audio source
- Frequency agile: N+1
- Better than 64% overall efficiency
- AC Voltage: 180-264 or 312-457 VAC, user-configurable

More Service-Friendly

- Hot-pluggable RF modules
- Hot-pluggable PS modules
- Dual digital exciters
- Compact, light weight rack (23"W x 72.5"H x 34.5"D) is ideal for tight spaces (V3.5/V5)

More Robust

- Redundant ventilation fans
- Dual IPA power supply
- Dual low voltage power supply
- Dual IPA

Visit Nautel in booth N8111 at



Phone: (902) 823.3900 Fax: (902) 823.3183 info@nautel.com www.nautel.com

HD Radio is a trademark of iBiquity Digital Corp. All rights reserved.

Making Digital Radio Work.

“My Number One Codec Rental is Zephyr Xstream”

-Steve Kirsch, President Silver Lake Audio



Rack 'em and stack 'em! The Silver Lake Audio Crew pictured from left to right: Steve Kirsch, Ken Stiver, Kirby Miovac and Jay Shoemaker

“When ISDN equipment rentals began in the early 1990s, we started with an equal number of different companies’ codecs. Today, Silver Lake has over 100 Zephyrs in stock, ten times more than any other brand.” says Steve Kirsch, owner of Silver Lake Audio.

The reasons should be obvious. Reliability, ease of use, compatibility, great support.

Telos: The Best Way To Hear From There.

And there. And there. And there.

Telos
AUDIO | NETWORKS
www.telos-systems.com

The Telos Logo and Zephyr Xstream are registered trademarks of TLS Corporation © 2007 TLS Corporation.
Silver Lake Audio is a registered trademark of Silver Lake Audio™

World Radio History

Audio Guide

by Jeff Schroeder

Audio File Standards for the Broadcast Industry

Continued from Page 26

play some songs the second they enter the building – and sometimes the only way they can get that file “right now” is downloading a compressed file.

The solution: yes – use it. But then *replace* it as soon as you can get your hands on a CD or linear copy of the song. Never archive original audio in MP3 format! Yet, I see this all the time, all over the country. For any audio that has a chance of making it back on the air from an archive, all work should be done and saved in full linear uncompressed file format. Hard drives are cheap now. Again: archive all original audio in linear wave format.

Indeed, why archive bad audio for future use? Too many times an element gets put into the automation system with the best intentions of eventually replacing it. Yet, if you were to go back into the system a couple of years later, the file likely would still be there largely because it does not sound so bad next to all of the other bad files.

SOURCE ISSUES

Another area of education deals with understanding the on-Line download “stores” such as iTunes. Not even taking into account the legality of downloading a song for “personal use” and playing it on the air, the files are compressed – sometimes highly compressed – and that compression will live on forever with that original source file.

Please understand, I am not saying not to use all legally available means to get a song or file that you cannot get anywhere else. But if this is going to remain in your library, *replace it* with a high quality linear wave file as soon as possible.

Unfortunately, as bad as such artifacts are now, HD will only make it worse. A badly compressed file will only be amplified by the compression algorithm of HD. It really is “Garbage in, Really Bad Stinky Rotten Garbage Out.” (I am not very opinionated, am I?)

STANDARDS

Now the more difficult issue: *Standards*. I am of the opinion that we – as an industry – can and should set the bar for what we are going to accept into our buildings from a file format standard.

The problems:
What should that standard be?
Who should set the standard?
And of the *most* importance, *who* is going to *enforce* the standard?

WORKING TOGETHER

As you might guess from the tone of this article, a lot of us at Citadel Broadcasting have been seriously discussing this topic at length. But it really does come down to cooperation from the entire industry.

If we (Citadel) set a standard for music that we are going to accept and the competition across the street does not have the same standard, are we going to forgo being first with a “Debut” song from a core artist because the file is below our standards? Of course not. That is just *not* going to happen. I know it, you know it. But there goes the standard!

The only way any standard is going to work is if we (Radio) set the bar and tell all of the music labels, production houses, and any other providers what our standards are – and stick by those agreed upon standards. I have had informal discussions with some of

the second hand providers already, and for the most part they are as frustrated as we are. They are simply not receiving high quality linear files from the record labels on a consistent basis – and when they do they are limited by drive space and bandwidth just as we are.

So, how do we begin? I would be willing to get together with any company, provider, or record label that would be willing to open the subject and possibly come up with some “base-line” standards that we could – over time – implement and eventually get the providers to adhere to.

Is this possible? Is this something that we as an industry can get together on and put the power of numbers on our side? I am willing to try. Are you?

Jeff Schroeder is the Corporate Director of Digital Technology for Citadel Broadcasting Company. If you feel strongly about today's broadcast audio quality, contact Jeff at jeff.schroeder@citcomm.com

Magazine Production Director

Radio Guide Magazine has an immediate opening for a publication production director.

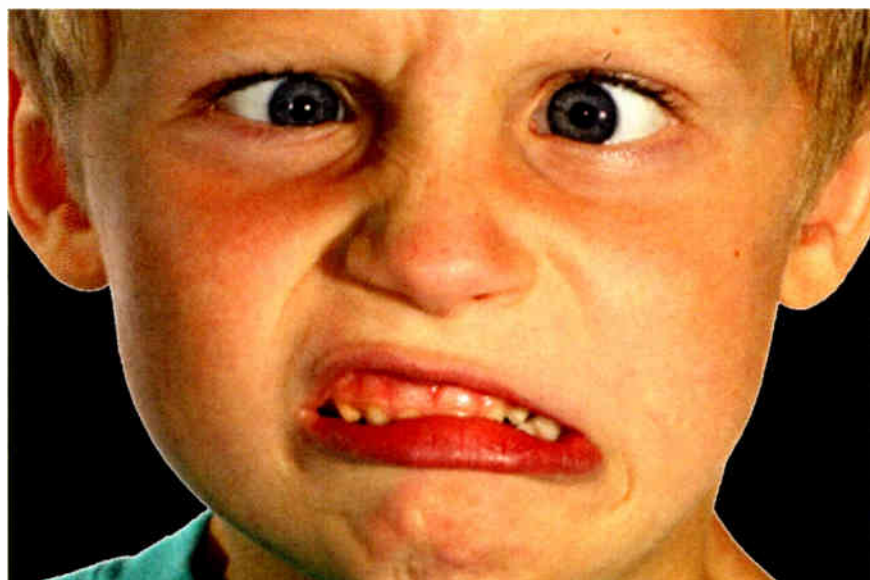
We are looking for someone skilled in the production of technical magazines, publications, and display advertising copy.

We seek a person comfortable with programs such as Pagemaker, InDesign, Acrobat, Photoshop, and other graphics tools, especially with experience in the PC environment. We prefer a person with a few years of experience in magazine layout.

This is a full time position and will not require relocation. A basic knowledge of the radio broadcasting industry is highly desired.

Join the fastest growing publication in radio.

Please email your resume to radio@rconnect.com. Media Magazines Inc. is an Equal Opportunity Employer. – *Ray Topp - publisher*



Tired of high maintenance!

VoxPro

The Short/cut Replacement
AutoNetwork-MP3-AGC-Search-Fade-Advanced Effects-Podcast Publishing

Available at all broadcast distributors
AudionLabs.com 206 842 5202 x203

©2006 Audion Laboratories Inc. All rights reserved. Audion, VoxPro are registered trademarks of Audion Laboratories Inc. Other company and product names may be trade marks of their respective owners.

Some call it
“The Ultimate Translator Receiver”

Why? Because it has so often brought ‘iffy’, as well as downright ‘useless’ translator sites to fully airable signal. Add to that, the FT-1AP’s established record of reliability, and extraordinarily low maintenance and you have a receiver that will pay for itself many times over with service visits you won’t have to make; not to mention a signal that will maintain your listener’s attention. In other words, “It leaves you alone to do more important stuff.”

The FT-1AP features our acclaimed, high resolution, analog, FM tuner, and state-of-art, digital control system which maintains tuning accuracy at all times, even after power failure. Included also is adjustable Composite Output and +10dB audio (XLR) outputs. To further enhance the FT-1AP’s versatility, it offers optional, level- adjustable, Carrier Sense (to assist in meeting FCC regs); an RS232, Serial I/O port, and a gain-adjustable, stereo headphone outlet.

The FT-1AP (FM-only) and FTA-100P (AM/FM model) are available direct or through your favorite equipment dealer.

fanfare Electronics, Inc. 1-800-268-8637 (U.S. & Canada)

6509 Transit Road, Unit H-1
Bowmansville NY 14026
Email prinfo@fanfare.com

Voice - 716-683-5451
Fax - 716-683-5421
Website: www.fanfare.com

“Designing receivers that broadcasters can rely on”

Feature packed.

(Kind of like our ads.)

Go (con)figure • The folks at MPR say they really love being able to configure and administer an entire building full of consoles and routing equipment from the comfort of their own offices. Put an Internet gateway in your Axia network and you can even log into Element (or any other part of an Axia system) remotely from home — where there's plenty of Cheetos and Pepsi. Great for handling those 6 P.M. Sunday "help me!" phone calls from the new weekend jock.

Perfect timing • You can't have too much time. That's why Element's control display contains **four different chronometers**: a digital time-of-day readout that you can slave to an NTP (Network Time Protocol) server, an elapsed-time event timer, an adjustable count-down timer... and there's also that big, honkin' analog clock in the center of the screen (Big Ben chimes not included).

Black velvet • Some things just feel right. Like our premium, silky-smooth conductive plastic faders and aircraft quality switches. We build Element consoles with the most durable, reliable components in the industry — then we add special touches, like custom-molded plastic bezels that protect on/off switches from accidental activation and impact. Because we know how rough jocks can be on equipment. And nothing's more embarrassing than a sudden case of *broadcastus interruptus*.

Swap meet • Element modules hot-swap easily. In fact, the **entire console** hot-swaps — unplug it and audio keeps going; an external Studio Engine does all the mixing.

How many? • How many engineers does it take to change these light bulbs? None... they're LEDs.

Talk to me • Need some one-on-one time with your talent? Talk to studio guests, remote talent, phone callers — **talk back to anyone** just by pushing a button.

The Busy Box for jocks • Element comes standard with a lot of cool production room goodies you'd pay extra for with other consoles: like per-fader EQ, aux sends and returns and custom voice processing by Omnia, enabling you to quickly build and capture compression, noise gating and de-essing combinations for **each and every jock** that load automatically when they recall their personal Show Profiles. Context-sensitive SoftKnobs let production gurus easily tweak these settings, while simultaneously satisfying their tactile fixations. (Don't worry for on-air use, you can turn off access to all that EQ stuff.)

Screen play • Use any display screen you choose, to suit your space and decor. Get a space-saving 12" LCD, or go for a big 21" monster. (This is Dave Ramsey's favorite Element feature, by the way. Anyone want to bet he bought his monitors on sale?)

Lovely Rita • LED program meters? How 1990's. SVGA display has lots of room for timers, meters, annunciators and more — enough to show meters for all four main buses at once. Reboot to 5.1 surround mode and the light show is even cooler, with surround audio and associated stereo mixes all going at once.

Memory enhancer • We know how forgetful jocks can be. That's why Element remembers their favorite settings for them. Element's Show Profiles are like a "snapshot" that saves sources, voice processing settings, monitor assignments and more for **instant recall**. Profiles are easy to make, too: just have talent set up the board the way they like it, then capture their preferences with a single click for later use. (Hey, make *them* do some work for a change.)

Split decision

No, you're not seeing double: Element gives you the choice of single-frame or split-frame configurations of **up to 40 faders**. Perfect for complicated talk or morning shows where the producer wants his own mini-mixer, or to give talent space for copy, newspapers and such. Solomon would be proud.

Stage hook • This button activates the emergency ejector seat. OK, not really. It's the Record Mode key; when you press it, Element is instantly ready to record off-air phone bits, interviews with guest callers, or remote talent drop-ins. One button press starts your record device, configures an off-air mix-minus and sends a split feed (host on one side, guest on the other) to the record bus. Like nearly everything about Element, Record Mode is **completely configurable** — its behavior can even be customized for individual jocks. Sweeet.

Missing features • Did we forget something? Program these **custom button panels** with any macro you want, from recorder start/stop to one-touch activation of complex routing and scene changes using PathfinderPC™ software. You could probably even program one to start the coffee machine (black, no sugar, thanks).

Mix-plus • If constructing a complicated mix-minus on the fly brings a big grin to your face, you're excused. But if you're like us, you'll love the fact that Element does mix-minus **automagically**. Forget using all your buses for a four-person call-in, or scrambling to set up last-minute interviews. When you put remote codecs or phone calls on air, Element figures out who should hear what and gives it to em — as many custom mix-minuses as you have faders.

Great Phones • With Element, jocks never have to take their eyes or hands off the board to use the phones. Element works with any phone system, but really clicks with the Telos Series 2101, TWOx12, and new NX-12 that connects four hybrids plus control with a **single Ethernet cable**. Status Symbols™ (cool little information icons) tell talent at a glance whether a line is in use, busy, pre-screened, locked on-air, etc. Even dial out with the built-in keypad.



AxiaAudio.com

Shown: 16-position split-frame Element, nicely equipped. \$12,558.00 US MSRP. Not shown but available: 4-, 8-, 12-, 16-, 24- and 28-position Element. Dual exhaust and whitewalls optional at extra cost. © 2006-2007 TIS Corp. Axia, Element, PathfinderPC, Status Symbols, Omnia™ TIS Corp., all other TMS property of their respective owners.

The Worst I've Ever Seen

A Visual Display of the Good, the Bad, and the Plain Hard-to-Believe

Going Ice Fishing for an ATU

by Jon Hosford

Mike Raymond and I share responsibility for the eleven stations in Vermont owned by Northeast Broadcasting. On a normal, frigid day in February, Mike got the call that WFAD in Middlebury was off the air and the station staff could not get the transmitter back on via remote control.

NOT THE USUAL SUSPECTS

At first we suspected the Harris SX-1A transmitter, which is notorious for being finicky about the load presented by the ATU and antenna. It is not uncommon for the station to have problems with tall cattails or snow shorting the tower causing the transmitter to fault.

We both made the assumption snow had drifted deep enough to bridge the insulator. But, after the hour drive, Mike arrived to find that the problem was not snow.

This site is in a fairly low area that is a wet swamp in the summer. This winter had somehow caused the water level to climb over three feet above normal level and then freeze. Luckily, this was still well short of the tower base. However, it was high enough that the water got well into the ATU cabinet – and then it froze. The transmitter did not like that!

ICE FISHING

The ice was about two inches thick, and the air temperature was well below freezing, so we decided (at least we hoped!) it was safe to walk on. The tower fence gates were frozen in the same ice, so we had to take the gates apart and climb through. The ATU was not a pretty sight.

Once we chipped the ice away from the cabinet, it was time to figure out how to loosen the Heliac and metering connections that enter the ATU from the bottom. I drew the short straw and spent 10 or 15 minutes

with my arms in 32-degree water, with a hacksaw, cutting off everything I could feel.



Too cold even for the fishes.

After making the cuts – and thawing out a bit – we realized there was still something holding it down. Unfortunately, due to the severely cold water, we just could not cut all the way through a piece of steel conduit.

This site is adjacent to a state highway department facility, so we walked over and borrowed a 10-foot pry bar. Using it and hoping the ice would hold us, we finally broke the last connection. We wrestled the ATU through the fence and into the building to clean out the ice and dry it out.

MAKING IT WORK AGAIN

At this point, we had been working in the wet and cold for several hours. It was not just the ATU that needed some serious drying out – and warming up.

The one problem left was how to mount the ATU so that the spring thaw would not let it sink through the ice and short out again. Obviously, there was no way we could put any kind of post into the ground – and setting it on top of the ice was not a viable option.



This is not what you would call a fun project!

I came up with the idea to use two, two-by-fours to hang the ATU from the side of the tower itself. The wood allowed us to keep the grounds insulated and still hold the ATU off the ice.



Back on the air with an ATU that is high and dry!

Using four U-bolts, two boards, and a new piece of coax, we had the station back on the air. The station operated well for many months until we could dig again and correctly mount the cabinet on posts.

Jon Hosford is the Director of Engineering for Northeast Broadcasting, based in Montpelier, VT. His circulation is almost back to normal now. You can contact him at jhosford@pointfm.com

The Broadcast Industry's **FIRST** 6-channel UNcompressed Digital STL



Advanced Technology, Only From TFT

- 6 UNcompressed Program Channels, maximum
- PC Configurable from Front Panel for Frequency, I/O, Alarms, LCD
- Supports 48, 44.1, as well as 32 ks/s Sample Rates
- 256 QAM, 64 QAM, 16 QAM Modulation
- AES/EBU or Analog I/O - Built-In Sample Rate Converters
- Major/Minor Alarms on both Transmitter and Receiver
- 3.125 kHz Step Size

TFT INC

Phone: (+1)408-943-9323

FAX: (+1)408-432-9218

www.TFTInc.com e-mail: info@tftinc.com
1953 Concourse Drive, San Jose, CA 95131

FlipJack FJ-500

NEW!

In Use
Around The
World



CELL PHONE INTERFACE MIXER

The FlipJack is the latest addition to the Conex line of cell phone interface products. The FlipJack is designed to interface most hand held phones that have a 2.5 mm hands-free adapter jack.

FOR MORE INFORMATION

1-800-645-1061

www.conex-electro.com

FEATURES:

- Two headphone jacks ... each with it's own volume control.
- Two Mic inputs and a separate Line Input
- Connection To A Standard Telephone Line.
- Separate headphone cue switch for more flexibility
- Operates on "AA" batteries (Included) or external power (Optional)
- Balanced Line Level Output
- Slots for shoulder straps.
- All IC's socketed for easy maintenance
- Tuner input for off-air monitoring
- LED level indicator

CONEX ELECTRO SYSTEMS

1602 Carolina St PO Box 1342 Bellingham WA 98227
phone: 360.734.4323 fax: 360.676.4822

**HAPPY 10TH
ANNIVERSARY!**

The Best Is
Omnia
Yet To Come!

Omnia
A Telos Company

Omnia is a registered trademark of TLS Corp. ©2007, TLS Corp. All rights reserved. www.OmniaAudio.com

World Radio History

Radio History

by Don kimberlin

Serendipity in the South The WBT Story

An old Persian fairy tale concerns some men who were sent on a mission. The Three Princes of Serendip (modern-day Sri Lanka) kept finding things seemingly unneeded or unknown at the outset but ultimately found to be useful. The word "serendipity," an aptitude for making desirable discoveries by accident, was coined in 1754 by English author Horace Walpole.

It must have been from serendipity. How else could you explain the growth of WBT, Charlotte, NC, from an amateur radio hobby in 1912 to one of the "Grande Dames" of today's radio stations?

HUMBLE ROOTS

By his own account, the first of WBT's three founders, Earle Gluck, obtained his Federal "Wireless Operator" license at Baltimore in 1912 and an "Amateur Station" license there in 1914. World War I, though, caused the silencing of all non-government radio operations, whereupon Gluck took his skills to sea with the U.S. Navy.

After the war, Gluck gained employment with Southern Bell Telephone in Charlotte. One day in late 1920 he went shopping in a Charlotte electrical store for materials to rebuild his amateur station. There, he happened upon two others with similar interests. One was an engineer at Westinghouse Electric and Manufacturing,

Frank Bunker. The other was Fred Laxton, of the electrical contracting firm Tucker and Laxton in Charlotte. The three soon became fast friends.

From his previous employment at General Electric, Laxton knew of some (for the time) "high powered" vacuum tubes under development at GE that could drive a radiotelephone transmitter. The notion of being able to communicate with other hams by voice rather than telegraph appealed to the three when Laxton said he thought he could get a pair of the new tubes through his GE connections.

4XD GOES ON THE AIR

In short order the trio had assembled a transmitter in an abandoned chicken coop behind Laxton's house on Mecklenburg Avenue in Charlotte, across from the Charlotte Country Club. Their test receiver and microphone were located in the comfort of the house. With the technology of the day, one can imagine that careful watching was needed to avoid damage to the precious tubes. By March 1921, the balky apparatus had been sufficiently tamed to secure a station license for Experimental Station 4XD.

According to Gluck, as the junior partner he had to stay in the house to talk on the microphone while

the others went outside to observe the fantastic new hardware in operation. He soon struck on the notion of playing a record on the phonograph with the microphone placed in front of it. Thus, he could at least get a glimpse of the transmitter for several minutes at a time.

Even though there were few transmitters or receivers in early 1921, it did not take long for Laxton's phone to begin ringing with calls from people who had built receivers and were pleasantly amazed to hear music in their earphones. In fact, the trio realized they could create a going business selling the components, supplies and instructions for home building radio receivers, since no complete receivers were being sold in the Charlotte market at the time.

The Southern Radio Corporation set up on the eighth floor of the Independence Building in "uptown" Charlotte. For the sake of business efficiency, the three moved the 4XD transmitter to the roof of the Independence Building and there gave it a fan-shaped transmitting antenna dangling down the face of the building.

FROM 4XD TO WBT

Gluck had by this time been routinely assigned duty as a "combo man," operating the transmitter, making announcements, and playing the records for music. He continued to be dogged by colleagues for the balance of his career about his beginnings as the "talent." In doing so, he also started a long-standing tradition of WBT having "combo men."

In January 1922, the Commerce Department formally established the broadcast service; Gluck and company applied for one of the first such licenses. So it was that on Monday, April 10, 1922, former Experimental Station 4XD changed its radiated identity to WBT. Nevertheless, one could say that, like many others around the nation, WBT had started licensed operations earlier – as early as March 1921.

(Continued on Page 34)

TRANSCOM CORPORATION

Serving the Broadcast Industry Since 1978

Visit Our Website – www.fmamtv.com

Send your e-mail requests to: transcom@fmamtv.com

Fine Used AM & FM Transmitters & New Equipment

AM	5 kW	1996	Continental 315D Solid State
	5 kW	1974	Continental 315F
	5 kW	1982	Harris MW5A
	5 kW	1987	Harris MW5B
	10 kW	1985	Continental 316F
	50 kW	1985	Continental 317C2

FM	1.0 kW	2007	Crown FM1000E
	1.5 kW	1983	BE FM 1.5A
	2 kW	2007	Crown FM 2000E
	3.5 kW	1986	Harris HT 3.5
	5 kW	1987	Harris FM5K1
	7+ kW	2002	Harris Z16H6 IBOC
	7+ kW	2005	Harris Z16 HD Solid State
	10 kW	2005	Harris Z10CD
	10 kW	2001	Henry 10,000D-95
	20 kW	1985	Harris FM20K
	20 kW	1989	QEI FMQ20,000B
25 kW	1982	Harris FM25K	
30 kW	1986	BE FM 30A	
50 kW	1982	Harris Combiner	

(w/auto exciter-transmitter switcher)

USED MISC. EQUIPMENT:

Altronic 20kW Air Cooled Load
Bird RF Thruline Watt Meter, 50S
Denon 720R Cassette Player

EXCITERS:

New 20W & 30W Synthesized Exciters
Used 2004 Harris 2nd Generation

Please go to our website
www.fmamtv.com for updated listings.

Equipment retuning and testing available. Please call for quote!

2655 Philmont Ave, Ste 200, Huntington Valley, PA 19006
800-441-8454 215-938-7304 Fax: 215-938-7361

A Reputation You Can Trust



Since 1943 ERI has served the radio broadcast industry with products of the highest quality and dependability. At the dawn of a new millennium, ERI continues to raise the bar and set the standard for excellence in radio broadcast.

ERI® ELECTRONICS RESEARCH, INC.
(812) 925-6000 | www.eriinc.com

AM Ground Systems Co.

Ground System Construction,
Evaluation & Repair

1-877-766-2999

www.amgroundsystems.com

- ◇ Has your station lost coverage over time?
- ◇ Is your AM ground system over 30 years old?
- ◇ Do you have a new CP or are moving transmitter sites?
- ◇ Has your ground system been damaged or vandalized?
- ◇ Is your base impedance or directional pattern unstable?
- ◇ Just wondering if you are getting all of the range your station is capable of?

If the answer to any of these questions is YES
Call today for a free construction, repair or evaluation quote.

Reliable On-time Installation

Quality Workmanship

Tower Tune-up

**Free Budgetary Estimates &
Quotes**

Experience Exceptional Quality,
Reliability and Service!
Experience Armstrong Transmitter!



Our single tube FM transmitters offer you exceptional quality and affordable prices.

Built for the "real world" environment these RF workhorses offer long term reliability and features not found in any other single tube transmitter available.

Like Fiber Optic PA arc detection, PA thermostatic protection Roll Out Power Supply, and Key Component temperature sensors

Armstrong Transmitter brings you the best RF products, the best around the clock support and the best prices

...because you deserve nothing less!



web: www.armstrongtx.com ph:315-673-1269
email: sales@armstrongtx.com fx:315-673-9972

BEXT

**FROM THE TALL
TO THE SMALL**

**FM & TV
Transmitters**
Solid State or Tube
Antennas & Combiners

20 Years of Service
Asistencia en Español
24 Hour Support
2 Years Warranty

www.bext.com
Tel 619 239 8462
Fax 619 239 8474
bext@bext.com



**NEW
EXCITERS/TRANSMITTERS**
w/stereo generator & audio limiter,
field programmable FSK ID keyer, all built-in!

Bay Country Broadcast Equipment

Buy • Sell • Trade

Your #1 Source for Quality
Used Radio Broadcast Equipment

View our latest list of equipment on-line at:

www.baycountry.com

Or call and we will fax it to you.

All equipment sold with a 15 day return guarantee.

Turn Your Excess Gear Into Cash

Fax or email your list to us and we will respond with our offer promptly. We only buy good working equipment with traceable serial numbers.

Fax Your List Today – 443-596-0212



<http://www.baycountry.com>

(Website Updated Daily)

E-mail: sales@baycountry.com
877-722-1031 (Toll Free) 443-596-0212 (Fax)
7117 Olivia Rd, Baltimore, MD 21220

Radio History

by Don Kimberlin

Continued from Page 34

COMPLETING THE PROJECT

Finally, on October 1, 1928 the new transmitter building had been roofed and major parts of the General Electric 5,000 Watt transmitter began to arrive – unfortunately with some damage in transit. Meanwhile, WBT obtained permission from the Federal Radio Commission to radiate up to 10,000 Watts.

Unfortunately, as the tower riggers were just finishing up at the transmitter site, they pulled the antenna wire too tight, causing the top 35 feet of one of the towers to fold over. There was more delay waiting for replacements as well as items in short supply, like lead-sheathed, twisted-pair wire for audio wiring.

Finally, on November 19, 1928, the last needed items were received from General Electric and a short test commenced at 1:00 AM. With high anticipation, the first airing of the new 5,000 watt transmitter was planned for 10:30 PM the following evening, November 21st.

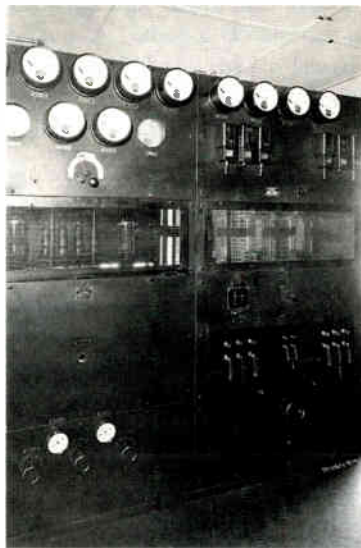
ELATION AND SADNESS

Operating first at just 2,500 Watts, WBT got excellent reception reports from 38 states and several Canadian provinces. The signal must have boomed in to Rhode Island, as 20 telegram reports came from Providence alone, while other Rhode Island locations added 50 more telegrams to the stack. At 1:00 AM, full 5,000 Watt operation began and continued thereafter, starting a WBT tradition of having a skywave audience every night.

By the end of the month, the new 5,000 Watt transmitter was deemed sufficiently reliable to permit disconnection of the Western Electric 106-A in town and shipment to its new Florida owner.

Regrettably, on December 3 – just weeks after seeing his proud new WBT on the air – C. C. Coddington suddenly dropped dead from a heart attack at the age of just 50. On the same date, WBT was reported having been received in the Hawaiian Islands, about 5,500 miles distant.

It is almost hard to believe how this major station grew in just eight short years from the inception of 4XD as a fun project for three young men. Serendipity, indeed.



WBT moved up to a GE 5 kW transmitter in 1928.

THE BEANCOUNTERS ARRIVE

But a new era for WBT was about to begin. Control reverted to the executor of Coddington's estate, Union National Bank. A lull occurred for a few months as the bank controllers took over the business.

The station had been a healthy business, but the bankers made it quite a bit more profitable, increasing airtime hours and profits considerably. One note from early December 1928 indicates that the cost of network lines had been "eliminated," along with the NBC affiliation.

In September 1929, WBT continued to grow, and even had its own 10-piece studio orchestra, while still

carrying the nightly theatre organ recitals. There was plenty of musical fare being broadcast from Charlotte on WBT.

Around this time, Earle Gluck seems to have dropped out of the WBT picture. However, he continued to figure in Charlotte radio with the establishment of competing WSOC in 1931, along with other former WBT staffers.

A NEW FAMILY

During 1929, the bank arranged the sale of WBT to a holding agent company affiliated with CBS, beginning a long relation with the network. WBT was an "O & O" until 1945, and remains a network affiliate today.

WBT joined an august family of radio stations that included such fabled call signs as WCBS, KNX, KMOX, KCBS, WBBM, WTOP and WCCO to name a few. CBS was, at the time, a most aggressive business in both technology and programming. CBS hired many famous early radio entertainers away from NBC, and WBT enjoyed carrying such audience draws as Bing Crosby, Al Jolson, George Burns and Gracie Allen, and Kate Smith.

After its purchase by CBS, WBT got a hefty transmitter power increase in 1931 to 25,000 Watts. The records are vacant on the reason for a power level of 25,000 Watts, but the installation of a Blaw-Knox "diamond" tower and a power increase to 50,000 Watts in 1933 suggests the triatic-wire antenna for the 5,000 Watt transmitter was simply unworkable with the high voltages and currents of 50,000 Watt operation.

The 50 kilowatt WBT AM signal grew to international prominence, being one of the American stations regularly heard across the Atlantic Ocean and listed in aeronautical publications as a reliable radio direction-finding signal for air pilots. By 1940, the WBT AM transmitter site with its distinctive Blaw-Knox "diamond" tower was listed on air navigation charts not only as a landmark, but as a guide for landing at nearby Charlotte Douglas Airport.

(Continued on Page 38)

RADIO SYSTEMS' CONSOLES DAS HYBRIDS CLOCKS



Year after year, broadcasters depend on Radio Systems' studio products. For performance, price and dependability **THERE IS NO BETTER VALUE.**

Millenium 6, 12, 18 & 24 Channel Analog and Digital Consoles • 4x4a & DA-16 Distribution Amplifiers DI-2000 & TI-101 Telephone Hybrids • CT-2002 Clock and Timing Systems w/GPS and Infrared Remote



Radio Systems, Inc.
601 Heron Drive, Logan Township, NJ 08085
phone: 856 467-8000 Fax: 856 467-3044 www.radiosystems.com

AM Ground Systems Co.

**Ground System Construction,
Evaluation & Repair**

1-877-766-2999

www.amgroundsystems.com

- ◆ Has your station lost coverage over time?
- ◆ Is your AM ground system over 30 years old?
- ◆ Do you have a new CP or are moving transmitter sites?
- ◆ Has your ground system been damaged or vandalized?
- ◆ Is your base impedance or directional pattern unstable?
- ◆ Just wondering if you are getting all of the range your station is capable of?

If the answer to any of these questions is YES
Call today for a free construction, repair or evaluation quote.

**Reliable On-time Installation
Quality Workmanship
Tower Tune-up
Free Budgetary Estimates &
Quotes**

**Experience Exceptional Quality,
Reliability and Service!
Experience Armstrong Transmitter!**



Our single tube FM transmitters offer you exceptional quality and affordable prices.

Built for the "real world" environment these RF workhorses offer long term reliability and features not found in any other single tube transmitter available.

Like Fiber Optic PA arc detection, PA thermostatic protection Roll Out Power Supply, and Key Component temperature sensors

Armstrong Transmitter brings you the best RF products, the best around the clock support and the best prices ...because you deserve nothing less!



web: www.armstrongtx.com ph:315-673-1269
email: sales@armstrongtx.com fx:315-673-9972

BEXT

**FROM THE TALL
TO THE SMALL**

**FM & TV
Transmitters
Solid State or Tube
Antennas & Combiners**

**20 Years of Service
Asistencia en Español
24 Hour Support
2 Years Warranty**

**www.bext.com
Tel 619 239 8462
Fax 619 239 8474
bext@bext.com**



**NEW
EXCITERS/TRANSMITTERS
w/stereo generator & audio limiter,
field programmable FSK ID keyer, all built-in!**

Bay Country Broadcast Equipment

Buy • Sell • Trade

**Your #1 Source for Quality
Used Radio Broadcast Equipment**

View our latest list of equipment on-line at:
www.baycountry.com

Or call and we will fax it to you.

All equipment sold with a 15 day return guarantee.

Turn Your Excess Gear Into Cash

Fax or email your list to us and we will respond with our offer promptly. We only buy good working equipment with traceable serial numbers.

Fax Your List Today – 443-596-0212



<http://www.baycountry.com>
(Website Updated Daily)

E-mail: sales@baycountry.com
877-722-1031 (Toll Free) 443-596-0212 (Fax)
7117 Olivia Rd, Baltimore, MD 21220

Radio History

by Don Kimberlin

Continued from Page 32

Operating on 360 meters, WBT published an operating schedule of 10:00 to 11:45 AM and 7:30 to 9:45 PM daily. In later years, Gluck admitted that operations in the early days were often "spasmodic," as he found it difficult to find adequate material to fill the schedule.

That situation did not last long. Soon, performers who were to become household names across the nation began to appear on WBT. Among these were bandleader Hal Kemp, and Freeman Gosden and Charlie Correll, headlined as "Two Black Crows." The duo would later move to Chicago and broadcast nationwide for many years as "Amos 'n Andy."

Another future famous Big Band leader, John Scott Trotter, appeared on WBT. Trotter was later to spend years in close association with Bing Crosby as Crosby's band leader on nationwide broadcasts.

NEW OWNER, NEW HOME, NEW SLOGAN

In 1927, the three friends decided it was time to liquidate their interests in Southern Radio Corporation, so they sold the receiver sales business (by then an RCA distributorship) to the Carolina States Electric Company and WBT to Charlotte's Buick dealer, C. C. Coddington. Gluck stayed on with his radio baby.

Coddington's ownership signaled the start of a period of quite benevolent ownership of WBT. At the outset, the WBT "home brew" transmitter and studio were installed in a penthouse atop the Coddington Building, with two new 80-foot towers to support an improved transmitting antenna; office space was provided below on the third floor. WBT was beginning to

look like a stand-alone radio station business rather than a sales adjunct to a parts supply house.

Coddington's sales manager, Lee Folger, displayed pride in the radio station by applying the logo, "Watch Buick Travel" to the stations' call sign.

GROWING THE SIGNAL

Under Coddington ownership, Gluck was able to secure affiliation with the new National Broadcasting Company's networks, thus WBT now had a steady supply of program material from the famously known national network programs of the day.



WBT moved to its current transmission site in 1928; the current, larger building, was constructed in 1933. This later building included the image of a microphone in the lintel.

The "home brew" transmitter that was rated at 250 Watts got beefed up to 500 Watts and, in early 1928, Coddington purchased a Western Electric 106-A transmitter that could operate at 1,000 Watts. Within months, Coddington planned to procure a 5,000 Watt transmitter from General Electric and move the WBT location to his farm, seven miles south of "uptown."

On Coddington's farm, WBT would get a fine new transmitter building and a triatic-wire antenna, suspended between two used 250-foot windmill towers spaced 600 feet apart in a cotton field.

The antenna had a ground plane of 47 radial wires planted in trenches two feet deep to avoid damage from the cotton farming on the field. This site, along Nations Ford Road in Charlotte, has been the home of WBT's AM transmitters ever since.

During this expansion phase, Coddington increased the WBT staff considerably with a Station Manager, an audio supervisor and several control engineers. Gluck was made Chief Engineer.

Curiously, despite many modern conveniences at the new transmitter site (like a Kelvinator electric refrigerator, a toaster, a percolator and a waffle iron), the site had no telephone. In its place, Gluck's amateur station W4CQ and a new one, W4AJJ, were operated as a link to the city.

A PAUSE FOR THE WEATHER

The expanded capital plan also included all-new studio and audio equipment from RCA. For example, two superb new condenser microphones arrived, permitting even better quality audio originations at WBT. Such microphones cost \$400 each in 1928 (about \$4,500 in 2007 money).

Completion was planned for September 1928, just about a year after the Coddington acquisition. Sale of the used WBT apparatus, right down to its 80-foot towers, was arranged with a Florida buyer. Unfortunately, manufacturing delays at General Electric, combined with heavy rains and a hurricane in the Southeast, slowed the transmitter site project.

WBT moved to support the community during the emergency. With telephone facilities in much of Florida and Georgia down, WBT used the amateur operation to get news from the outside world; for example, relaying news of Charlotte students stranded in Charleston by the storm. Famed entertainer Jimmy Rodgers came to Charlotte to broadcast an appeal for hurricane relief donations. Rodgers raised \$3,100 (2007 equivalent: over \$35,000) in one short program.

(Continued on Page 36)

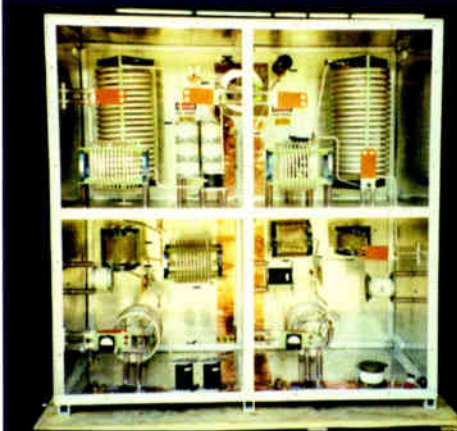
A SYMBOL OF TRUST IN AM ANTENNA EQUIPMENT FOR OVER 40 YEARS



LBA Technology, Inc.

www.LBAGROUP.com

LBA Technology, Inc
3400 Tupper Drive
Greenville NC 27835
(800) 522-4464





Yo Rick! You Rock!



Hey, when Rick talks, we listen.

Rick Dees has always liked the look and feel of the traditional 50s- and 60s-style rotary fader consoles. For his new studio complex, SAS custom designed and built the **Dees Digital Rubicon**, a true Rubicon digital console control surface in the traditional style.

See it at NAB 2007, SAS booth N-4413.



**SIERRA
AUTOMATED
SYSTEMS**

20 years of listening. 20 years of innovation.



Congrats
to you,
Rick Dees,
on your
inauguration
into the
**Radio Hall
of Fame.**

Radio History

by Don Kimberlin

Continued from Page 34

COMPLETING THE PROJECT

Finally, on October 1, 1928 the new transmitter building had been roofed and major parts of the General Electric 5,000 Watt transmitter began to arrive – unfortunately with some damage in transit. Meanwhile, WBT obtained permission from the Federal Radio Commission to radiate up to 10,000 Watts.

Unfortunately, as the tower riggers were just finishing up at the transmitter site, they pulled the antenna wire too tight, causing the top 35 feet of one of the towers to fold over. There was more delay waiting for replacements as well as items in short supply, like lead-sheathed, twisted-pair wire for audio wiring.

Finally, on November 19, 1928, the last needed items were received from General Electric and a short test commenced at 1:00 AM. With high anticipation, the first airing of the new 5,000 watt transmitter was planned for 10:30 PM the following evening, November 21st.

ELATION AND SADNESS

Operating first at just 2,500 Watts, WBT got excellent reception reports from 38 states and several Canadian provinces. The signal must have boomed in to Rhode Island, as 20 telegram reports came from Providence alone, while other Rhode Island locations added 50 more telegrams to the stack. At 1:00 AM, full 5,000 Watt operation began and continued thereafter, starting a WBT tradition of having a skywave audience every night.

By the end of the month, the new 5,000 Watt transmitter was deemed sufficiently reliable to permit disconnection of the Western Electric 106-A in town and shipment to its new Florida owner.

Regrettably, on December 3 – just weeks after seeing his proud new WBT on the air – C. C. Coddington suddenly dropped dead from a heart attack at the age of just 50. On the same date, WBT was reported having been received in the Hawaiian Islands, about 5,500 miles distant.

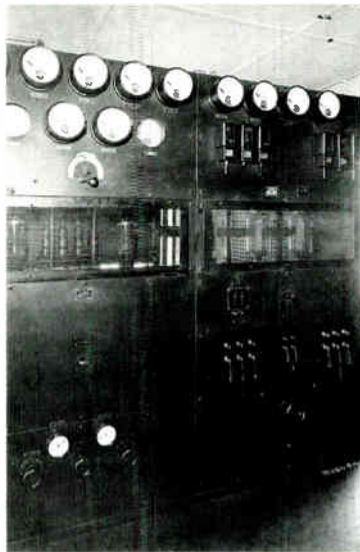
It is almost hard to believe how this major station grew in just eight short years from the inception of 4XD as a fun project for three young men. Serendipity, indeed.

THE BEANCOUNTERS ARRIVE

But a new era for WBT was about to begin. Control reverted to the executor of Coddington's estate, Union National Bank. A lull occurred for a few months as the bank controllers took over the business.

The station had been a healthy business, but the bankers made it quite a bit more profitable, increasing airtime hours and profits considerably. One note from early December 1928 indicates that the cost of network lines had been "eliminated," along with the NBC affiliation.

In September 1929, WBT continued to grow, and even had its own 10-piece studio orchestra, while still



WBT moved up to a GE 5 kW transmitter in 1928.

carrying the nightly theatre organ recitals. There was plenty of musical fare being broadcast from Charlotte on WBT.

Around this time, Earle Gluck seems to have dropped out of the WBT picture. However, he continued to figure in Charlotte radio with the establishment of competing WSOC in 1931, along with other former WBT staffers.

A NEW FAMILY

During 1929, the bank arranged the sale of WBT to a holding agent company affiliated with CBS, beginning a long relation with the network. WBT was an "O & O" until 1945, and remains a network affiliate today.

WBT joined an august family of radio stations that included such fabled call signs as WCBS, KNX, KMOX, KCBS, WBBM, WTOP and WCCO to name a few. CBS was, at the time, a most aggressive business in both technology and programming. CBS hired many famous early radio entertainers away from NBC, and WBT enjoyed carrying such audience draws as Bing Crosby, Al Jolson, George Burns and Gracie Allen, and Kate Smith.

After its purchase by CBS, WBT got a hefty transmitter power increase in 1931 to 25,000 Watts. The records are vacant on the reason for a power level of 25,000 Watts, but the installation of a Blaw-Knox "diamond" tower and a power increase to 50,000 Watts in 1933 suggests the triatic-wire antenna for the 5,000 Watt transmitter was simply unworkable with the high voltages and currents of 50,000 Watt operation.

The 50 kilowatt WBT AM signal grew to international prominence, being one of the American stations regularly heard across the Atlantic Ocean and listed in aeronautical publications as a reliable radio direction-finding signal for air pilots. By 1940, the WBT AM transmitter site with its distinctive Blaw-Knox "diamond" tower was listed on air navigation charts not only as a landmark, but as a guide for landing at nearby Charlotte Douglas Airport.

(Continued on Page 38)

RADIO SYSTEMS' CONSOLES DAS HYBRIDS CLOCKS



Year after year, broadcasters depend on Radio Systems' studio products. For performance, price and dependability **THERE IS NO BETTER VALUE.**

Millenium 6, 12, 18 & 24 Channel Analog and Digital Consoles • 4x4a & DA-16 Distribution Amplifiers
DI-2000 & TI-101 Telephone Hybrids • CT-2002 Clock and Timing Systems w/GPS and Infrared Remote

radio
SYSTEMS

Radio Systems, Inc.

601 Heron Drive, Logan Township, NJ 08085

phone: 856 467-8000 Fax: 856 467-3044 www.radiosystems.com

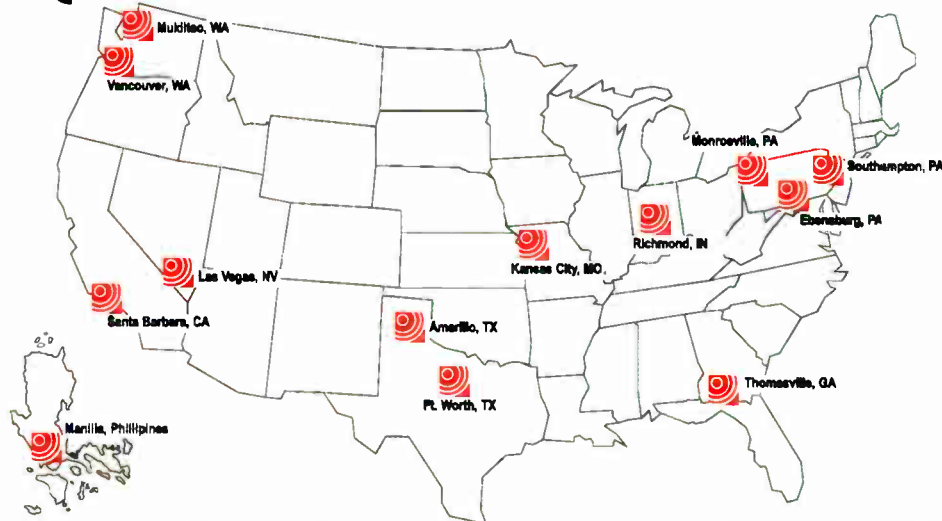


RF Specialties® Group

Hi, thanks for reading our ad.
Most sporting events are off and running.
The RF Specialties Group has the remote
equipment you'll need to do a
bang up job covering the games.
Microphones, Sports-Headsets, Mixers,
POTS, ISDN, Marti RPU equipment
and the list goes on.

Give us a call!

The call is free and you'll discover,
RF Specialties is your ticket
to a perfect Sports Season.



RF is Good for You!

Visa and Mastercard are welcome.
Offices Independently Owned and Operated.

www.rfspec.com

Sam Lane	Santa Barbara, CA	1-800-346-6434
Bill Newbrough	Las Vegas, NV	1-888-737-7321
Bob Trimble	Vancouver, WA	1-800-735-7051
Walt Lowery	Mukilteo, WA	1-425-210-9196
Don Jones	Amarillo, TX	1-800-537-1801
Wray Reed	Ft. Worth, TX	1-888-839-7373
Chris Kreger & John Sims	Kansas City, MO	1-800-467-7373
Rick Funk	Richmond, IN	1-888-966-1990
Ed Young	Monroeville, PA	1-866-412-7373
Dave Edmiston	Ebersburg, PA	1-866-736-3736
Harry Larkin	Southampton, PA	1-888-260-9298
Alan Slaughter & Chris Hall	Thomasville, GA	1-800-476-8943
Ed Edmiston	RF Specialties of Asia (Manila, Phillipines)	+63-2-412-4327

Coverage, Reliability, and HD Radio™ Experience

When Vermont Public Radio installed HD Radio™
at some of the worst weather sites in North America,
they chose

Shively Labs® ...again!

WVPR/Mt Ascutney; WNCH/Burke Mtn;
WVPS/Mt Mansfield - Bringing the first
HD Radio™ signals to the Green Mountain State!

P. O. Box 389, 188 Harrison Rd., Bridgton, Maine USA 04009
(207) 647-3327 (888) SHIVELY FAX (207) 647-8273
sales@shively.com www.shively.com

- An Employee-Owned Company -
ISO-9001:2000 Certified



April 16 - 19
Las Vegas
See us at Booth N7026

Mt. Mansfield
Vermont
October 2006

Radio History

by Don Kimberlin

Continued from Page 36

LOCAL RADIO WITH A NATIONAL IMPACT

The autumn of 1930 witnessed the first noon news readings by well-known Charlotte radio personality Grady Cole. Cole's career at WBT was to last until 1961, an almost unheard of span of 31 years for a single "morning man," including later years as an early days "combo man," doing the morning show from the WBT transmitter site.

In 1933, another long-time Charlotte radio luminary, Charles Crutchfield, joined the staff. Many well-known programming aspects of WBT's on-air "southern personality" owe their aegis to Charles Crutchfield.

As a CBS "O & O," WBT became a sort of "farm club" for the CBS radio network. Andy Griffith applied at WBT in 1941, but was rejected because he expected a salary of \$75 (which would be more than \$1,000 today) per week. The Carter family sang on WBT, including young June who would later become country luminary June Carter Cash. Surprisingly, Charlotte-bred Charles Kuralt, one of CBS Radio's all-time luminaries, grew up writing for Charlotte newspapers but never broadcast his mellifluous voice on WBT until after his employment by the network.

Federal ownership constraints enacted after WWII required CBS to sell WBT in 1945. Jefferson-Pilot Insurance bought the property for \$1,505,000 (2007 equivalent: \$16.7 million). More recently, Jefferson-Pilot merged with Lincoln Financial Group, giving WBT a new ownership identity.

EMERGENCY RESOURCE

With WWII looming in 1941, the FCC made WBT a "key station," to function as a communication source and center for about 25 other stations in event of national emergency. This became a root of the Conelrad system.

Later in WBT's Conelrad career, a small control room was built below ground level into the second sub-basement of the WBT transmitter building, complete with Cold War style survival fittings, in an effort to make WBT-AM the most survivable of radio stations.



The WBT emergency studio is still "stocked" with supplies.

During WWII, it was discovered that German U-Boats favored WBT as a navigational aid, so to aid the US war effort; WBT broadcast false news items to mislead U-Boat listeners about the status of the United States homeland.

In the later "Cold War" Era, WBT changed its overnight programming to a locally produced "Radio Moscow," intended to counteract the Soviet propaganda being sent to the U.S. by Russia. "Radio Moscow" ultimately grew to syndication on 26 stations, and was subsumed by "Radio Liberty." Evidence that it aggravated Castro and the Soviets was seen in the extensive jamming attempted against WBT from Cuba.

MULTIPLYING TOWERS

Like a number of other conflicts that resulted from the 1941 NARBA changes, WBT encountered objection to its nighttime skywave from KFAB, Omaha NE, which was moved from 780 to 1110 by the NARBA treaty. For some years, WBT operated on STA's while seeking a solution to the KFAB problem.

A first effort toward reducing WBT's radiation toward KFAB was a directional antenna, made of three towers. Still there today, WBT's tower site is a well-known visual feature of Charlotte, seen by travelers on I-77. The towers operate with flashing white strobes at night.

The DA resulted in a significant loss of nighttime local signal to the west – in particular near Shelby, North Carolina and westward. A map on the station's QSL card shows the sharp notch in its nighttime 50/50 0.5 mV/m contour.

Trying to solve this, WBT's engineers built a 1 kW synchronous repeater in 1946 at Shelby NC, backfilling the null toward KFAB. Unfortunately, this combination still did not settle the KFAB matter.



WBT's Directional Antenna is designed to protect KFAB, Omaha.



ADJUSTING SKYWAVE

A skywave lobe is a well-known characteristic of the "diamonds," dating back at least to observations in the 1930s by RCA's doyen of directionals, George H. Brown. His engineering purist view (perhaps also encouraged by the fact that the "diamonds" were sold by his employer's arch rival, Western Electric) was that skywave lobe is wasted power, lost from local groundwave coverage.

However, as WBT's loyal evening skywave audience shows, WBT turned an apparent flaw into a feature. As some in the South would say, WBT "made lemonade out of a lemon." WBT's nighttime skywave signal in fact, was an audience asset rather than a liability, garnering listener responses all the way from Canada to Cuba. Over the years, WBT evening personalities have played to that surprisingly loyal skywave audience.



The elevated ground screen "tuned" the vertical radiation.

Still, WBT continued to address the KFAB conflict. Rather than make surgical changes to its steel as WSM had done in a similar situation, WBT's engineers placed an elevated ground screen around its tower bases to modify the vertical radiation characteristics of the Blaw-Knox diamond towers.

This change did reduce WBT's skywave toward KFAB, but only momentarily. At the very time of completing a whole new AM-DA Proof of Performance that included the effect of some 16 cellular and two-way towers in its near field, the WBT engineers discovered a new (17th) tower, necessitating further adjustments and a new complete proof to finally get back on direct power measurement. Today's operators should be grateful for the later Rulemaking that protects AM operators from the effects of others in their near field!

RECOVERING AGAIN FROM WEATHER

Not that many years after finally achieving a stable state for the WBT DA, disaster struck in the form of Hurricane Hugo in 1989, destroying two of the three Blaw-Knox diamonds.

In order to restore stable DA operation, it was necessary to have two new towers built exactly as the originals, and that meant reconstructing manufacturing drawings and work, a process which took several years. As an indication of the high regard WBT commands in the broadcasting world, the FCC authorized unlimited non-directional operation at full power during the long repair process. Few stations might expect such a relaxation of licensed parameters.

As part of a final settlement of the KFAB issue, WBT shut down the Shelby synchronous repeater and currently uses an FM at Chester, SC to provide WBT programming to the area.

INTO THE NEW CENTURY

As many stations have done, WBT has upgraded over the years. After the Western Electric, an RCA 50B, an RCA BTA-50F1, and an MW50A served over the years until the Harris 3DX50 Destiny came on line. The WBT signal has always been rock solid.



Chief Engineer Jerry Dowd shows off WBT's 50 kW Harris Destiny transmitter.

From 1927 hurricane coverage, to WWII propaganda through the Cold War to Vietnam, and natural disasters since, WBT and its air staff have been good public citizens of the first order. All the while, WBT has drawn top ratings for its programs and its air staff right through the Big Band, radio drama and soap opera, Top 40, and Talk Radio eras



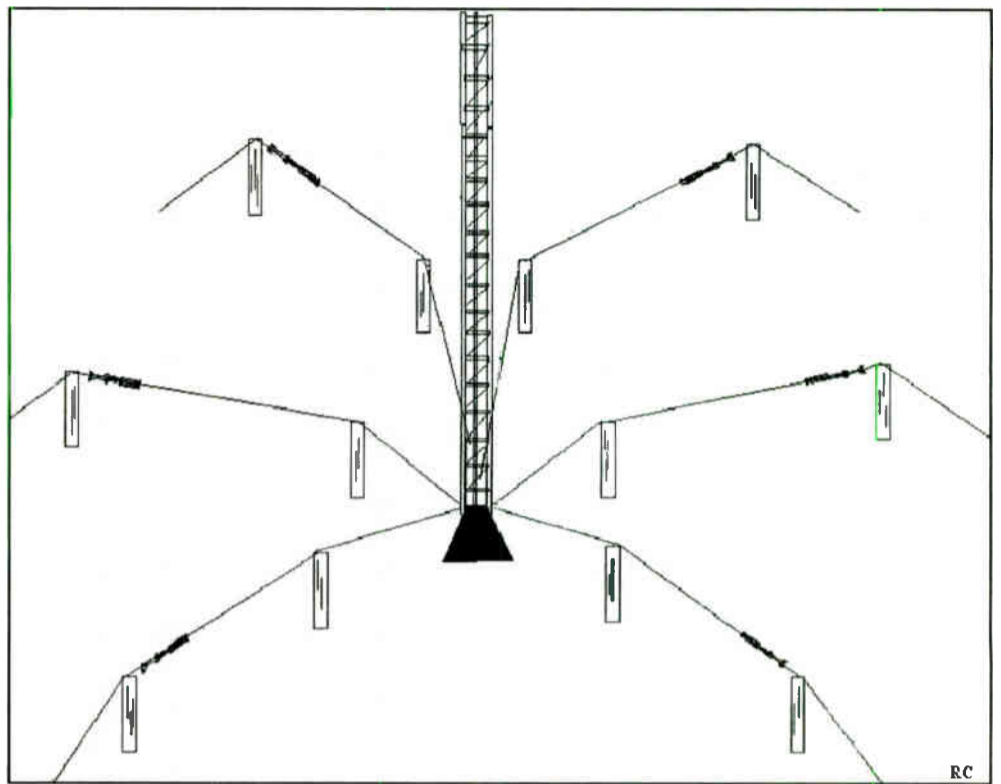
And, not to be obsoleted by changes in communications technology, WBT's news/talk is streamed to the Internet at www.wbt.com.

For some 85 years, it has truly been a serendipitous journey for WBT and its audience.

Don Kimberlin's career has ranged from engineering local stations to the video circuits for the Moon Landing. Contact Don at dkimberlin@earthlink.net

Elevated Radial System

- Easily inspected.
- Less expensive.
- Performs equal to or better than a buried system.
- Requires less labor and materials to install.
- Fully complies with FCC requirements.
- Can utilize the land below the systems for farming, storage buildings, etc.
- FREE systems design with purchase of elevated radial systems from Nott Ltd.



Phone 505-327-5646 • Fax 505-325-1142

3801 La Plata Hwy, Farmington, NM 87401
email: info@nottltd.com

nott ltd

The Mic Whisperer.

Gets the best performance from your mics.

At a whisper.
Or a shout.

The Pro Announcer 500PH

The amazing microphone processor that eliminates room noise and hollow room syndrome, plus provides absolute level control.

AIR corp

www.aircorp.biz 972-304-0455

Visit Us at
NAB Booth
#N3716

LEA INTERNATIONAL

Stay on the Air!

We Protect:

- Digital & Analog Transmitters
- Studio Equipment & Facilities

Contact LEA Today for a Free Product Catalog!
208.762.6121 • 800.881.8506
www.leaintl.com lea@leaintl.com

Your Broadcast Surge
Suppression Specialists



smiths

by Stanley Adams

The Transmitters That Lit Up the Dial



*This month we start a new **Radio Guide** feature: a look at the big transmitters that took the industry from the small power levels of the early 1920s to the pinnacle of American radio operations – the WLW flamethrower that enabled the marketing of cheap radio receivers, lit up light bulbs, and annoyed the Germans. How did we get from there to here? Stan Adams starts us on the historical pathway.*

Heavy Metal? You mean like AC/DC or Guns and Roses? Maybe Anthrax? No? How about five or six big guys holding up their metal horns in a Polka band. No, not that either. Grab a cup of your favorite beverage and sit back; we are about to enjoy just a little reminiscing about the hard work, the glowing tubes, and the heavy metal that drove – and still drives – the big signals in radio broadcasting.

LOWER POWER BEGINNINGS

To properly track the growth of broadcast transmitters, we must begin at the time of Dr. Lee de Forest. He was the one who added the all important third element – the control grid – to the vacuum tube. Although it is an historical fact that de Forest did not know exactly how it all worked, he did figure out enough to be instrumental in broadcasting's growth.



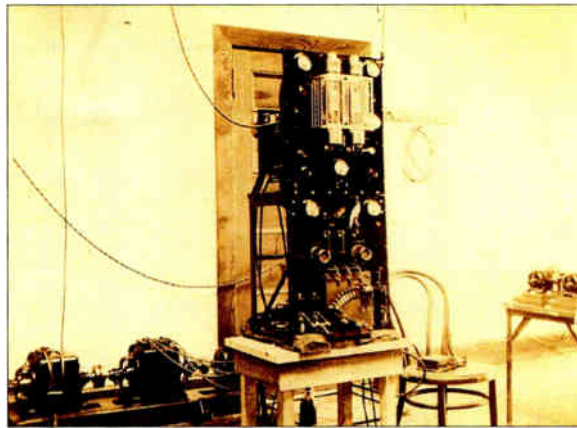
The de Forest Audion.

Following on the heels of Reginald Fessenden, de Forest became determined to broadcast audio over a wide area. However, his early attempts were only marginally successful; Enrico Caruso, for example, complained that his early broadcasts were all but inaudible.

After Edwin Armstrong explained and improved the Audion so that it truly amplified the input, progress in building transmitters started. De Forest made several models, leading up to his broadcasts in 1915-1916 from high atop the High Bridge Building in New York City (Bronx). Then 2ZK came into existence as he broadcast from New Rochelle, New York.

De Forest was broadcasting with music and voice into his OT-201C modulated oscillator using 1 kW input tubes; a model such as this provided the first transmitters for WOR in New York City and WWJ of Detroit, Michigan. These transmitters were poor at best with high amounts of harmonic distortion, carrier shift, and other such maladies.

Soon de Forest moved to the West and set up station 6XC/KZY in San Francisco. While there he would operate for over a year and make thousands of broadcasts. From his documented work in New York and California, it is a well-known fact that he predated KDKA in the craft of broadcasting.



A de Forest transmitter, used at WOR.
Courtesy: Cliff Uzmann

Nevertheless, as more able men were to explain the operation of the vacuum tube, we find de Forest simply disappearing from the scene. His next major project would be the investigation and development of "sound on film" movies.

ADDING POWER

The war to "end all wars" was certainly World War I. Millions of people were killed or displaced, and the youth of Europe were gone for at least an entire generation. And yet it was this horrific event that spurred America into the development of radio and electronics.

Much of the development is credited to the quasi-governmental setup of the Radio Corporation of America by those firms which possessed the capacity (capital and patents) to see the development of communications through all of the early days. The General Electric Company headed up the negotiations with Westinghouse, American Telephone and Telegraph, and two smaller companies – Wireless Specialty and United Fruit. During 1919 and 1920, negotiations would take place that would allow "patent pooling" and the sharing of engineering knowledge.

Compared to Europe, the U.S. had a slight head start in communication system design, based on de Forest's tube architecture. De Forest sold his Audion rights to Western Electric during the 1912 to 1915 time frame under the suggestion of Dr. John Stone Stone. As the GE negotiations were completed, a much better grade of tube began coming from the factories of Western Electric and General Electric where such notables as Drs. Irving Langmuir and H.D. Arnold added their developmental skills.

KILOWATTS OF AUDIO

The Telephone Company began not only to build their amplifying repeater for the long-haul transcontinental line but their attention was quickly turned to short haul transmission testing. One of the first experiments was made between Montauk, Long Island, and Wilmington, Delaware, a 250 mile distance.

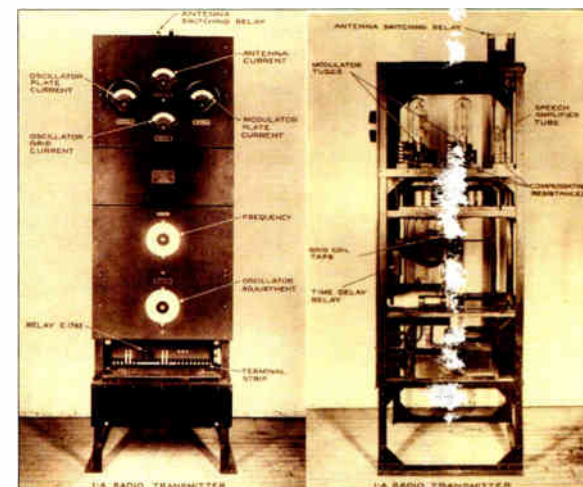
In April of 1915, 900 miles was achieved with duplex transmission to St. Simon's Island, Georgia. In late summer 1915, the famous Arlington, Virginia, to Paris, France, tests were accomplished using 50 Watt tubes – some 300 to 500 of them in parallel – which provided a sustained output of about 2 to 3 kW.

Meanwhile, as the "Great War" began, WE and GE spent much of their early research activity in the development of basic circuits and also of military and ship-to-shore equipment. It would be following the war that a goodly amount of that attention would be re-directed toward the concept of broadcasting.

WESTERN ELECTRIC TURNS UP THE RF

The Western Electric Company built ship-to-shore and point-to-point communications equipment as they learned how to develop broadcasting equipment. Construction of the transmitters in Deal Beach, New Jersey and Montauk Point, L.I. led to the first practical application of this and was used to communicate from the mainland of California to Catalina Island. That system was used for many decades.

The first broadcast transmitters that WE made were for 2XB, later WEAJ in NYC, 1920. The equipment worked so well that a 500 watt unit was released: the 1-A transmitter. One was sold to WBL (WWJ Detroit). Similar higher power transmitters went to WBAY and WEAJ in 1922.



Western Electric 1-A allowed stations to jump from 20 or 50 Watts to 500 Watts.

Complete with its power supply cabinet, the 1-A transmitter system was known as the 101A series; the 101B was later released which was basically the same transmitter. The tube complement was four Type 212's and one Type 211.

Quite a few of these transmitters were sold to early broadcast companies primarily due to two reasons: (1) it was the first "real" broadcast equipment that was available which offered fairly adequate performance and (2) due to the legal pressure from the AT&T company, which threatened to sue any broadcasters who did not use their transmission equipment. This was part of their territorial rights as agreed to under the incorporation of the RCA.

The early transmitter list also showed a 2A (Transmitter Code)/102A (System Code), a 100-watt unit that came out about the middle of 1923 and had five Type 211 tubes. The smaller 3C (Transmitter Code)/103A (System Code) was for a 50 watt unit that came out in early 1924 and used two of the Type 211 tubes. All of these systems used the "constant current" modulation scheme (also known as Heising modulation).

At the end of 1923, WEAJ added a 5 kW water-cooled amplifier to the Type 1, 500 watt transmitter. This combination was termed as a Type 4 transmitter (and the 104 system), and was used by a number of stations.

BIGGER AND BIGGER

Later additions to the Western Electric lineup were the 5C (Transmitter Code)/105B (System Code) with a power of 5 kW and manufactured about early 1928, this unit had two Type 220 tubes and it used the 500 Watt transmitter as the low level driver. This principle of low level modulation and driving became a classic hallmark of all WE high power transmitters in future years.

The 6B (Transmitter code)/106B (System Code) came out in mid-1928 was a 1 kW transmitter using one Type 228 tube. Finally, in early 1928, the 7A (Transmitter code)/107A (System Code) was born and became the first of many 50 kW units. This consisted of six Type 232 tubes. (Continued on Page 42)

NO MORE SECRETS.



@ **NAB**2007
THE WORLD'S LARGEST ELECTRONIC MEDIA SHOW

www.nomoresecrets.com



See why more broadcasters are choosing Nautel.

Nautel's integrated digital solutions make your move to HD Radio easy and economical. At NAB2007 you'll see first hand many of the exciting solutions highlighted below. No More Secrets. **Come see how Nautel is making digital radio work.**



See it @ NAB

NxLink: Transmitter control in the palm of your hand!

See it @ NAB



V-Series FM transmitters: Now twice as many V series transmitters to satisfy your Digital or Analog FM needs.



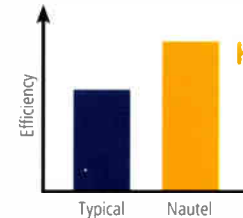
See it @ NAB



V1, Nautel's new 1 kW FM Transmitter: Complete FM HD Radio transmitter site solution in just 6RU.



New V15 transmitter hits the 10 kW TPO sweet spot for HD Radio Hybrid mode with outstanding efficiency.



Win a Digital Transmitter or Exciter!
Go to www.nomoresecrets.com to enter.

See us at booth **N8111**



Making Digital Radio Work.

Phone: (207) 947.8200 | Fax: (207) 947.3693 | info@nautel.com | www.nautel.com
HD Radio is a trademark of iBiquity Digital Corp. All rights reserved.

Ultramod Classic Processor



UM-2000 Stereo Processor

The UM-2000 is a self-contained, split band stereo FM processor, with AGC and an **ultra transparent** digital stereo generator.

The audio processor section is an ultra-transparent AGC that preserves dynamic integrity while maintaining the modulation peak envelope at its maximum level.

Designed to give you a concert quality, at a price you will like.

- Selectable pre-emphasis
- Digitally synthesized stereo generation
- Dual composite outputs
- Ultra-transparent split band AGC
- 30 dB gain reduction capacity

AFFORDABLE AUDIO PROCESSING
Just \$995.00

Contact us for details and dealer demonstration.

Broadcast Technology Company

PO Box 2581, Garden City, KS 67846

620-640-3562 – www.broadcasttech.com

Digital and Analog Transmitter Audio Switching Solutions, Analog to IBOC!



The AES-302 Digital Audio Switcher/DA/D to A Converter



The CDS-300 Composite Audio Switcher/DA



The CDS-302 Automatic Composite Audio Switcher/DA

Introducing the next generation **transmitter audio switchers** from BDI. Now you can have complete confidence in your signal path with this series of switcher/DA systems. We have **composite** and **digital** solutions for your routing and distribution requirements. If your system is all digital, choose the AES-302 to automatically switch, distribute and monitor your transmitter audio feeds. Still running an analog STL or stereo generator? Use either the CDS-300 or 302 to switch and distribute your baseband audio signals. Select one of the optional modules for the CDS series and convert your analog signal path into an AES digital output suitable for digital exciters and IBOC implementations. Visit our web site and download complete information about these problem solver products.

Broadcast Devices, Inc.

Tel. (914) 737-5032 Fax. (914) 736-6916

Website: www.Broadcast-Devices.com



WE GIVE RADIO SUPER POWERS



YES. REALLY.

Continental Electronics' 816HD FM offers the highest power transmitter on the market for low-level combined digital HD and analog FM. The 816HD can deliver 28kW of power for the strongest, cleanest signal on the airwaves. And since the 816HD FM is built "Continental" tough, its performance and reliability will make you a superhero! For more information, call 800.733.5011 or visit our web site at www.contelec.com



by Stanley Adams

The Transmitters That Lit Up the Dial

Continued from Page 40



WLW leaped to 50 kW with the WE 107A.

This new set of transmitters was, as it were, a "second generation" system which offered higher power, greater stability, improved frequency response, and a reduction in audio and RF distortion products. Much of this grew out of on-going research: low level modulation techniques were developed for trans-Atlantic telephonic transmissions and the incorporation of crystal frequency control was developed at WEAf and WBAY.

With this second generation, 100% modulation became possible and all transmitters used some form of this basic design until the seminal design development of W.H. Doherty. (The Doherty amplifier was first applied to station WHAS in Louisville, KY, in 1938.)

Overall, this second-generation series' superior performance placed aural broadcasting in a professional light. On the other hand, it was during this developmental period that we find engineers and broadcasters alike wanting to work on the "power principle." Namely, "I can beat you if I have more power than you do."

PROGRESS AT GE AND RCA

General Electric did much with WGY radio, Schenectady. The station really was their "commercial laboratory." GE worked with 50 and even 60 kilowatts of power according to the FCC license cards of the period. Additionally, experimental operation after midnight tested a working GE transmitter at 100 kW.



A portion of WGY's FCC Application Record.

Here is the one from WGY which reflects, we believe, the first high power transmitter (range of 50

kW). The station was running 56 kW on 790 kHz in April of 1927. Other reports indicate testing at 50 kW began in 1925, a license issued in 1926. Either way, this was more than a full year before WLW ran the first WE 107A 50 kW station in Cincinnati or RCA's 50A in New York City.

Unlike the compact transmitters of today, WGY had a large open room where all the transmitter sections, tubes and power supplies were laid out in a nice symmetrical manner; safety rails surrounded each module. It must have been a sight to behold!



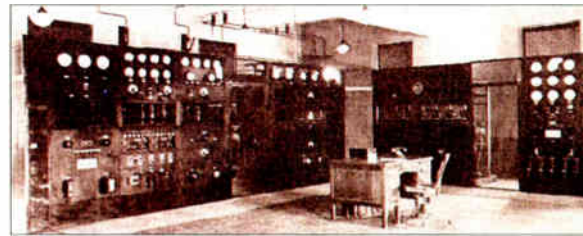
Looking through WGY's Control Room to the Transmitter Room.

Perhaps it would be a good time to mention what I consider a fairly true statement: the power development ran alongside the tube manufacturers' capabilities. And who were they? GE and WECO, of course.

WJZ, another of the early stations, claimed to have used 50,000 watts intermittently since 1925 at Bound Brook, NJ; 1935 was the year in which this power level became "full time." However, checking the FCC record cards, I could find it only requesting this power as far back as 1927. In all fairness though, a number of the earliest records are missing as the station changed hands and call letters quite a few times, finally ending up as WABC.

WEAF, the main station for AT&T/RCA, did become home to an RCA 50A in 1927. Whether there were other 50As is unclear, but the 50B (possibly an "up-

grade" from the 50A) was a major success, with installations from coast to coast.



Serial No. 1 of the RCA 50B series was installed at WTIC.

HOW HIGH CAN YOU GO?

For a short time, fifty thousand Watts seemed to be the pinnacle of transmitter power, at least for those who were wealthy enough to afford the expensive units and their power bill. Manufacturers scrambled to build larger models, but although many stations in the late 1920s and 1930s applied for higher power, only one station received approval for it from the government.

Powel Crosley was determined that his Cincinnati station - WLW - would be the "first with the most" power in the land. Among other things, it would permit his receiver manufacturing company to make and sell less expensive radios.

In late 1928/early 1929 WLW was pouring out its 50,000 Watts but it just seemed to be too little for a station that served the center of the nation, consisting of rural Americans. Only a station in the range of 500,000 Watts could adequately cover what for most stations was a secondary service.

Consultations with General Electric, Westinghouse and the RCA went on as early as 1930, and in 1934 WLW made it happen - including the ability to bill the same rates as an entire national radio network. Rural America became the primary coverage for WLW and, at a time when receivers could cost several year's salary, the



Ever higher power from heavy metal turned Crosley's Harko into the first mass market, low-priced receiver.

Crosley Harko sold for as little as nine dollars. Indeed, it sold well enough that Crosley stopped manufacturing anything else at the time.

Interpreting Early Western Electric Codes

System Code	Transmitter Code	Power Rating	Manufacture Date	High Power Tube Complement
101 A	1A	500 watts	Early 1923	4-212; 1-211
102 A	2A	100 watts	Mid-1923	5-211
103 A	3C	50 watts	Mid-1924	2-211
104 A	4A	5000 watts	1923/1924	1A plus 2-220
105 B	5C	5000 watts	Mid-1928	1B plus 2-220
106 B	6B	1000 watts	Late 1928	1-228
107 A	7A	50,000 watts	Mid 1928	Drivers plus 6-232

But we are starting to get a bit ahead of our story about heavy metal in broadcast. Stay tuned for our next installment about the big rigs that made broadcasting "happen."

Stan Adams' family has been involved in broadcasting since the 1940s. He currently works at in the Memphis RF Engineering department of Sprint. Email contact is: stanleybadams@yahoo.com

We Want You to Be Safe

We value our readers and want you to be alive when each issue of **Radio Guide** arrives in your mailbox.

Use the **Radio Guide** non-contact AC tester to find live circuits ... *before* they find you.

A bright LED and audio beeper warn you when an AC voltage is present.

- 90-240 VAC Range
- Insulated Test Tip
- Batteries Included

Perfect pen-shaped design for easy carrying. Keep one at each of your remote sites.

The Radio Guide VT-6 AC Voltage Tester



Radio Guide Reader's Price - \$10.00

(Price includes shipping & handling.)



Credit Card Payments Accepted at:

www.radio-guide.com/products.html

the professional broadcaster's choice for IP STLs

WorldCast Eclipse



At last! An IP audio codec that offers a reliable, DSP-based platform and automatic back-up for 24/7 reliability.

APT's WorldCast Eclipse is the ultimate in flexibility and choice offering IP, X.21/V.35 and ISDN interfaces and a selection of popular coding algorithms including Enhanced apt-X, MPEG Layer 2/3, MPEG 4 AAC, G.711 and G.722

All the features you expect from a professional broadcast codec are supplied as standard: analog and AES/EBU I/Os, adjustable silence detection, alarm ports, contact closures, speed dials, embedded auxiliary data and many more...

Configuration and control of the WorldCast Eclipse is straightforward and simple thanks to APT's powerful and intuitive Codec Management System (CMS). Offering extensive real-time management of multiple codec units, the CMS enables alarm monitoring, logging and performance monitoring as well as configurable user and audio profiles.

To see the full functionality of CMS, download a trial version from www.aptx.com.



Also Available:



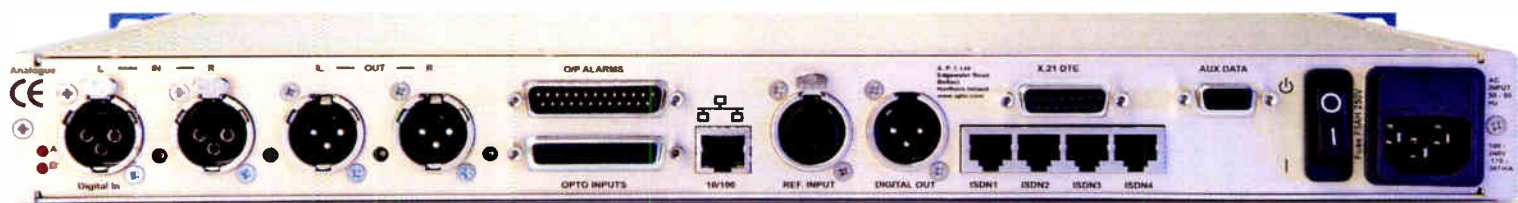
WorldCast Horizon
Bidirectional stereo audio codec offering Enhanced apt-X over IP



WorldCast Meridian
Multi-algorithm audio codec with both IP & X.21/V.35 interfaces



WorldNet Oslo
Professional, Modular Audio Multiplexing Platform offering up to 14 stereo channels over T1/ E1 or IP links with Enhanced apt-X or linear audio. Built-in redundancy, automatic back-up and hot-swappable cards ensure round the clock reliability for multi-channel STLs.



APT Headquarters
Tel: +44 (0)28 9037 1110
Email: info@aptx.com

APT North America
Toll Free: 800 955 APTX
Boston Tel: 781 810 2260
Florida Tel: 772 340 0850
Email: sales@aptx.com

APT

www.aptx.com

Service Guide Radio Equipment Products and Services



NEW

New tubes are now manufactured by Econco in expanded facilities in Woodland, California.

ECONCO

NEW



Tel: 800-532-6626 Web: www.econco.com
Intl: +1-530-662-7553 Fax: +1-530-666-7760

TRANSMITTING CAPACITORS

MICA-VACUUM-CERAMIC



SURCOM ASSOCIATES, INC.
(760) 438-4420
LINK@SURCOM.COM

Silver Plating Powder

Silver Plate On-The-Job with Cool-Amp!!

Cool-Amp

Silver plating powder

- *Maintain your RF frequency
- *Keep your PCBs cool
- *Increase conductivity
- *Minimize power loss from corrosion & oxidation

Conducto-Lube

Silver based lubricant

- *Reduce resistance
- *Prevent power interruptions
- *Prevent data errors
- *Prevent power failure

Ph: 503-624-6426 www.cool-amp.com 60 years customer satisfaction! email: sales@cool-amp.com

RF PARTS COMPANY
From Milliwatts to Kilowatts™

Eimac • AmpereX • Svetlana • M/A-Com
Motorola • Toshiba • Philips • Mitsubishi
Se Habla Español • We Export

800-737-2787
760-744-0700 Email: rpf@rfparts.com
www.rfparts.com

AM Ground Systems Co.

Ground System Construction,
Evaluation & Repair

1-877-766-2999

www.amgroundsystems.com

BAUER TRANSMITTERS, INC.

www.bauertx.com

BAUER - ELCOM BAUER - SPARTA - CETEC

Re-Manufactured
Bauer Transmitters Available

AM/FM – 2.5 kW to 25 kW
www.bauertx.com paul@bauertx.com
915-595-1048 Fax: 915-595-1840

Now Available! New Sections!

The updated 2004 version of Eimac's
Care & Feeding of Power Grid Tubes
Handbook is now available.

Contact Richardson
Electronics today for
your **FREE** copy.



Richardson Electronics
Engineered Solutions

Toll Free: 800-882-3872
630-208-2200
Internet: broadcast.rell.com
E-mail: broadcast@rell.com

DA HOOK DA GAP

Safety Grounding Hook Lightning Dissipation Gap



Solid Brass Hook & Hardware
Fiberglass Rod Handle
#10 Copper Cable & Alligator Clip



Available with Horn or Ball Gaps
Patented (#5,661,262)
Hot Adjust Mechanism

Wilk Science and Technology Inc.

1112 North Grove Avenue, Oak Park, Illinois 60302
Telephone & Fax: (708) 524-8588

D&C Electronics Co. - New Tubes -

We have the alternatives for all your needs,
at the lowest prices, direct from our stock!

EIMAC, SVETLANA, PRO-TEK®, EEV, and many others.

352-688-2374 or 800-881-2374

VISA VISA & MASTERCARD Accepted

ChrisScott & Associates

Visit our website
www.scott-inc.com

Ph: (270)781-5301
Fax: (270)781-1232
Bowling Green, Kentucky



AM-FM
Notch Filters



CCA PARTS & SERVICE V&J Electronics

Can supply all parts, schematics, and manuals for CCA, CSI, Sintronic, and Visual transmitters. Field service and complete rebuild transmitters available.

Call Van or Jerry Meier: 770-907-2694

Fax: 770-907-2694 – 24/7 Service

COD, Visa, Master, Discover, NET-15/30

www.ccaelectronics.net

Alert Monitors



enbergelec.com

DCS DIVERSIFIED COMMUNICATIONS SYSTEMS

"SERVING BROADCASTERS SINCE 1981"

BROADCAST EQUIPMENT REPAIR
Audio/RF Equipment - AM/FM Transmitters
Free Consultation/Loaners Available

www.divcomm.biz

814-756-3053 • rpogson@aol.com

OWN A LPAM STATION! LICENSE FREE!

- 1-2 Miles Range Possible
- FCC Part 15 Type Accepted
- Best sound in the business!

Tel 919-362-9393 Fax 919-367-0607 Visa/M/C

<http://www.am1000RANGEMASTER.com>
sales@am1000RANGEMASTER.com



Around the County

Around the Country

Around the World

George Whitaker
Owner

www.mikeflags.com

Practical Radio Communications
Arlington, TX

Service Guide Radio Equipment Products and Services



ST Connectors for 66 Blocks...
 Bag of 10: \$ 6.95
 Bag of 100: \$65.00
(Ridiculously Expensive!)

Squeeze them on Jumper Wire. Great for temporary or permanent jumpers. You need 2 per pair!

We also have Punching Doublers, 66 Blocks, Single Pair Jumper Wire in Assorted Colors, 66 Block & Modular Attenuators, and many other Unique, Problem Solving Telecom Products.

Fix RF Problems!
 Handset Modular: \$18.95
 1 Pair Modular: \$14.95
 2 Pair Modular: \$18.95
 1 Pair Hard Wire: \$ 8.95

99% Success Rate!

RF Filter

Choose the frequency range for maximum rejection:
 • 5 to 3m.hz (AM) • 3 to 30m.hz • 26 to 60m.hz • 60 to 150m.hz (FM)
 Now Available... Combination AM & FM Filters!
 See the RF Troubleshooting Flow Chart and four page RF Tech Bulletin at:
www.sandman.com

Mike Sandman... Chicago's Telecom Expert
 Call for FREE Catalog: 630-980-7710



rf Investigator V 3.0
FM...AM...or Both
You choose!
 rfSoftware, Inc.
 innovative engineering tools

Are you tired of switching from program to program to complete a project?
 How about displaying your drive test output on top of your Longley-Rice prediction to SEE how your station is operating.
 Save time, money, and hard drive space, with software that gives you all the tools in one program to work *smarter not harder*.

Call 352-367-1700 for Details!
 Visit www.rfsoftware.com Today



MOORETRONIX
 BROADCAST & INDUSTRIAL ELECTRONICS

Our 5th Year

Our client list continues to grow. Thank you for your confidence and equipment purchases.

We Re-Condition

Pacific Recorders BMX I-II-III, AMX, ABX and RMX, Stereo-Mixer and Mixer News-Mixer products.

Solve Your System Wiring Problems Fast!



With **STEREOTRACER**
 See our Web News-Update page, for details.
 Tel: 800-300-0733 Fax: 231-924-7812
WWW.MOORETRONIX.COM

RF Professional Engineering Services


- ★FCC Applications
- ★Coverage modeling
- ★RF exposure limit reports
- ★STL & microwave path analysis
- ★Co-location and interference studies
- ★Expert witness testimony by P.E.s

www.rfengineers.com
RFEngineers, Inc. 352-367-1725

FCC COMPLIANCE
TOWER SIGNS
 AM & FM TOWER SIGNS
 STANDARD & CUSTOM
 TOWER REGISTRATION SIGNS
 ANTENNA LEASING SIGNS
 EXTENDED OUTDOOR LIFE

ANTENNA ID PRODUCTS
antennaid@msn.com
 610-458-8418
 VOX OR FAX
www.antennaid.com
 GLENMOORE, PA
 19343-9552

RED GUY WIRE MARKER BALLS
 8 ft YELLOW GUY WIRE PROTECTORS
 ANTENNA TAGS - NUMBERED
FREE CATALOG



BESCO INTERNACIONAL
 "Now in Our 34th Year"

World Leader in AM-FM Transmitters

AM & FM Pre-Owned Units in Stock
 All Powers and Manufacturers
 Instruction Books - Spares - Complete
 Visit our Website: www.besco-int.com
 Or Call Rob Malany at: 321-960-4001



Let IBS plan your new Studio Build or Site Renovation

Contact:
Olen Booth or Houston McDavitt
24 Years in Business
with over 300 build outs.
 662-324-6934 • www.fixmystation.com



Global RF SolutionsSM
 RF Engineering Consultants
 "We've Rewritten The Book on RF Safety"
www.grfs.net
 (480) 814-1393
rfolutions@cox.net

- FCC Compliance Specialists
- RF Safety Training
- Site Surveys, Narrowband & Broadband
- MPE Software Analysis, Sales, Training
- Safety Programs

Professional Equipment Repair

- Consoles at Lightner Electronics, Inc.
- Exciters
- STLS
- Automation Systems
- Audio Processors
- Transmitters
- Remote Equipment



Toll Free: 866-239-3888
www.LightnerElectronics.com

McPherson Radio
 Specializing in pre-owned QEI transmitter products.

QEI – 6 Month Warranty – QEI

All equipment tuned and tested on your frequency. MRC has a repair facility to meet your broadcast needs, for repair of QEI exciters and low power transmitters. Other broadcast manufacturer products are welcomed too.

Bob Brown at 856-232-1625 Fax: 856-232-2075
 Email: mcpersonradio@comcast.net

Doug Vernier
 Telecommunications Consultants

- FCC Applications for AM, FM, TV, DTV, LPTV, STL
- Upgrade and Due Diligence Analysis
- Frequency Searches
- Site Relocations
- Propagation Prediction with Custom Mapping
- Demographic Analysis
- Directional Antenna Design

VSoft COMMUNICATIONS
 We use V-Soft Software!
www.v-soft.com consulting@v-soft.com 800-743-3684

www.digitalradioengineering.com
 Phone: 845-355-4001

digitalradio engineering

Professional Broadcast Engineering Services
 Consulting • Project Management • Contract Engineering
 FCC Alternative Inspections • Due Diligence Inspections
 Engineering Staff Oversight • Engineering Staff Assistance
 Facility Inventory • Broadcast Equipment Acquisition
 New & Pre-owned Broadcast Equipment Sales

Microphone Flags



800.450.6275
micflags.com

All our Mic Flags feature our **PRO-TECH** paint (non-chip). All shapes and sizes, **CUSTOM** and **BLANK** mic flags.
camera stickers-promotional products-lapel pins
your first choice for quality and service

Where do you want to go with your content?



DISCOVER AN EDUCATIONAL JOURNEY THAT ENDS IN SUCCESS:

Conferences: Radio Management • Broadcast Engineering
 Business Regulatory & Legislative • RTNDA@NAB
 Podcasting Summit • Media Fusion
 Radio Hall Exhibits • Radio & Audio Stage
 Content Village • RTNDA@NAB Exhibits & Showcase Theater

ELECTRONIC MEDIA'S ESSENTIAL DESTINATION

NAB 2007

THE WORLD'S LARGEST ELECTRONIC MEDIA SHOW

Conferences: April 14-19 • Exhibits: April 16-19
 Las Vegas Convention Center • Las Vegas, Nevada USA

Let your journey begin!

www.nabshow.com

To the top of your market and beyond...

Digital technology is altering the dynamics and economics of Radio, and if you can thrive in this new reality you're ahead of the competition. You can't afford not to be at NAB2007, your essential destination.

You'll come face-to-face with the hottest technologies and the coolest ideas, but you'll also learn which of these innovations are critical to your operation right now. New software to build that next-generation web site, pod- and multicasting tools, the most current legal advice on government issues and operations — concrete solutions that will build market share and profits.

Everybody who's anybody in Radio — or would like to be — will make tracks to NAB2007.

If you're a station owner, manager, promotions director, sales and marketing manager, news director, broadcast engineer or legal counsel, then you belong here with your industry at NAB, the destination of your dreams. Where can your content take you? On the journey of a lifetime. And it all begins at www.nabshow.com

OPENING KEYNOTE & STATE OF THE INDUSTRY ADDRESS
 MONDAY, APRIL 16

David Rehr
 NAB
 Sponsored by:

RADIO LUNCHEON
 TUESDAY, APRIL 17
 NAB Broadcasting Hall of Fame Presentation

RADIO INDUCTEE
Rick Dees
 Movin' 93.9 Los Angeles
 Luncheon Sponsored by:

Brian Cooley
 CNET.com
 Luncheon Sponsored by:

Super Sessions

DIGITAL CONTENT: THE RACE IS ON
 MONDAY, APRIL 16

Shane Robison
 Hewlett-Packard Company

UPLOAD, DOWNLOAD AND OVERLOAD: 2008 MEDIA ELECTION STRATEGY
 NAB/RTNDA JOINT PRESENTATION
 MONDAY, APRIL 16

Chris Matthews
 MSNBC
 Hardball with Chris Matthews

PORTABLE! DIGITAL MEDIA CONTENT ANYWHERE, ANYTIME
 MONDAY, APRIL 16

Blake Krikorian
 Sling Media, Inc.
 Sponsored by:

INNOVATORS SPOTLIGHT SERIES
 MONDAY, APRIL 16

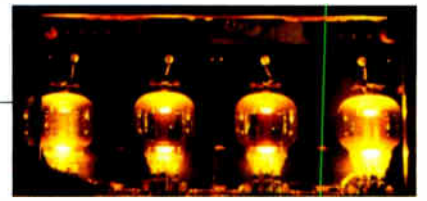
Eric Schmidt
 Google

SOCIAL NETWORKING IN THE 21ST CENTURY
 TUESDAY, APRIL 17

Shen Tong
 VFinity

Ticket Required for All Sessions

FINAL STAGE



RADIO ROUNDUP

The Radio Guide Event Register

Email your dates and info to: radio@rconnect.com

NAB 2007

April 14-19, 2007
Las Vegas, Nevada
www.nabshow.com

PAB & SBE41 Annual Engineering Conference

May 8, 2007
Hershey, Pennsylvania
www.pab.org/conventions.html

Dayton Hamvention

May 18-20, 2007
Trotwood, Ohio
www.hamvention.org

Texas Assoc. of Bdcstrs. (TAB)/SBE Convention

August 8-10, 2007
Austin, Texas
www.tab.org/convention.php

NAB 2007 Radio Show

September 26-28, 2007
Charlotte, North Carolina
www.nabradioshow.com

Pittsburgh SBE20 Regional Convention

October 10-11, 2007
Monroeville, Pennsylvania
www.sbe20.org

35th Annual SBE22 Broadcast/Technology Expo

October 16-17, 2007
Verona, New York
www.sbe22expo.org



Radio Guide Advertiser Info – April 2007

Advertiser - Page

Air Corp - 39
AM Ground Systems - 33
APT - 43
Armstrong Transmitters - 33
Audemat - 19
Audion - 28
Axia - 29
Bay Country - 33
Belar - 15
BEXT - 33
Broadcast Devices - 41
Broadcast Software Intl. - 3
Broadcast Technology - 41
CircuitWerkes - 17
Comet - 24
Comrex - 5
Conex Electro Systems - 30
Continental - 41
D&H Antennas - 23
Davicom - 8
DRE - 6
Econco Tubes - 23, 44
ERI - 32
Fanfare - 28
Gorman Redlich - 11
Harris - 48
Henry Engineering - 2, 13
Inovonics - 1, 23

Website

www.aircorp.biz
www.amgroundsystems.com
www.aptx.com
www.armstrongtx.com
www.audemataztec.com
www.audionlabs.com
www.axiaaudio.com
www.baycountry.com
www.belar.com
www.bext.com
www.broadcast-devices.com
www.bsiusa.com
www.broadcasttech.com
www.circuitwerkes.com
www.comet.ch
www.comrex.com
www.conex-electro.com
www.contelec.com
www.dhsatellite.com
www.davicom.com
www.dreinc.com
www.econco.com
www.eriinc.com
www.fanfare.com
www.gorman-redlich.com
www.broadcast.harris.com
www.henryeng.com
www.inovon.com

Advertiser - Page

Jampro - 21
JK Audio - 9
Kintronic Labs - 9
LBA Technology - 34
LEA - 39
Lightner Electronics - 15
Micro Communications - 19
Moseley - 10
Nautel - 26
Nott Ltd. - 39
OMB America - 19
Omnia - 31
Peter Dahl - 15
Phasetek - 21
Pristine - 2
RAM Broadcast Sys. - 11
Radio Systems - 36
RCS - 16
RF Engineers - 47
RF Specialties - 37
SAS - 35
SCMS Inc. - 25
Shively Labs - 37
Telos - 27
TFT - 30
Tieline - 7
Titus Technology - 11
Transcom - 32

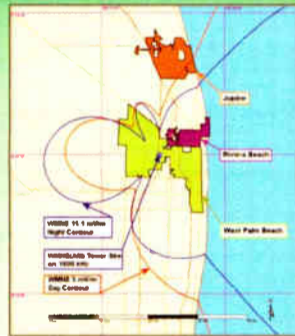
Website

www.jampro.com
www.jkaudio.com
www.kintronic.com
www.lbagroup.com
www.leaintl.com
www.lightnerelectronics.com
www.mcibroadcast.com
www.moseleysb.com
www.nautel.com
www.nottltd.com
www.omb.com
www.omniaaudio.com
www.pwdahl.com
www.phasetekinc.com
www.pristinesys.com
www.ramsyscom.com
www.radiosystems.com
www.rcsworks.com
www.rfengineers.com
www.rfspec.com
www.sasaudio.com
www.scmsinc.com
www.shively.com
www.telos-systems.com
www.tftinc.com
www.tieline.com
www.tituslabs.com
www.fmamtv.com

Radio Guide Engineering Services

Consulting Professional Engineers

- Expert Witness Testimony
- FCC Applications
- Frequency Searches
- Co-location Studies
- Custom Map Preparation
- RF Exposure Reports & Maps
- Coverage Modeling & Maps
- STL & Microwave Path Analysis
- Interference Analysis Studies



RFEngineers, Inc.

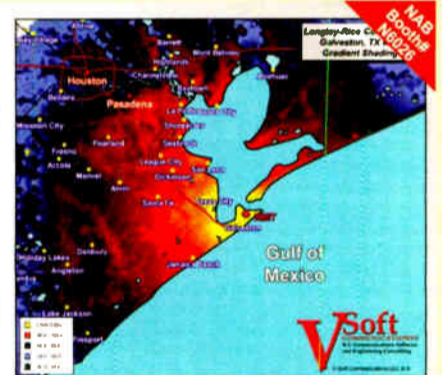
alex@rfengineers.com

352-367-1725



The Leader in Broadcast Engineering Consulting Software!

- Use Probe 3™ to create stunning "real-world" coverage maps using Longley-Rice and other models.
- Run AM-Pro 2™ to perform AM skywave and groundwave allocation studies, interference analysis, & coverage mapping.
- Use FMCommander™ to study FM allocations using spacings and contour-to-contour protections.



- Run Terrain-3D™ to plot STL paths and Longley-Rice coverage over 3D terrain.

www.v-soft.com • 800-743-3684 • info@v-soft.com

DON'T FORGET! (Gee, did I do it or not?)



How many times have you driven away from a remote site and wondered if you forgot to switch the local-remote switch, or close the door on the aux transmitter, or some other important task? Now there is the "Don't Forget!", a system that will monitor these tasks and remind you before you leave the site.

- Six Inputs, either N.O. or N.C.
- 3 "Opto-Probe" inputs
- LED display and audible fault indication
- Outputs, both flashing and steady, for external LED's and sounders
- Easily interfaced with your remote control

Included are the Indicator Module, I/O breakout board with audible sounder, Power Supply, "Opto-Probe" LED and visible light source sensor, 2 sets of magnetic contact switches and DB15 connecting cable. Additional "Opto-Probe" sensors, magnetic contact switches and extension cables are available.

MSRP only \$165.00

For a stand-alone "Opto-Probe" LED and visible light detector the "Opto-Probe" and the "Opto-Probe Control Module" are available.

- One form C relay contact output rated at 48 volts @ 2 amps
 - Action of the light source is repeated by a LED in the top of the probe
 - Opto-Probe easily attaches with adhesive pad
 - Control Module attaches with hook & loop fastener material.
- Included are the "Opto-Probe" sensor, Control Module and power supply.
- MSRP only \$85.00**



For complete details on these and other innovative broadcast products and our distributor listings, please call or visit our web site at:

www.dmengineering.com



2174 Chandler St. Camarillo, CA 93010 805-987-7881 800-249-0487

Consulting Communications Engineers EMC Test Lab

- FCC Applications
- Frequency Searches and Coordination
- AM-FM-CATV-ITFS-LPTV
- EMC Test Lab - FCC and European (IEC)

OWL ENGINEERING, INC.

Email: info@owleng.com 651-784-7445 Fax: 651-784-7541

5844 Hamline Ave. N., Shoreview, MN 55126

Member AFCCE



Harris is your end-to-end radio solution provider.

AM/FM Analog or HD Radio™ • Audio Consoles • Broadcast Studios

High Power AM • Systems and Service • Intraplex Transport

HD Radio™ is a trademark of iBiquity Digital Corporation

Harris PR&E NetWave console with optional networking. Available in 8-16-24 channel frames, all with fully modular construction.



FlexStar HDx exciter—the gold-standard for FM and FM-HD exciters, featuring RTAC (Real Time Adaptive Correction for best mask compliance) and Exgine, the latest iBiquity platform in HD Radio.



ZX1000, 1 kW tri-mode FM/FM-HD or digital only transmitter. FM transmitters available from 250 W to 70 kW, in analog or HD Radio.



Destiny 3DX-50, 50 kW medium wave direct digital drive high efficiency, high reliability AM transmitter. AM transmitters from 1 kW to 2 megawatts, all fully compatible with HD Radio.

Imagine Harris transmitters...
combined with legendary Orban audio processing.



OPTIMOD 9400-AM Digital

No-compromise, independent, multiband processing for analog AM and digital radio—in one box!

For over 20 years, OPTIMOD-AM has dominated the sound of major-market AM radio. Orban's new 9400 offers even better analog AM processing, while its unified analog and digital design substantially reduces costs compared to a two-box configuration.



www.orban.com

Contact Harris at 800-622-0022 or email autoconfirm@harris.com



assuredcommunications™

Government Systems • RF Comm • Broadcast • Microwave

www.harris.com

PRSR STD
U.S. POSTAGE
PAID
PERMIT NO. 410
BEAVER DAM WI

– Radio Guide Websites –

Radio Guide: www.radio-guide.com

White Papers: www.radiopapers.net

Used Gear: www.radio-classifieds.com

Radio History: www.olderadio.com

Buyers Guide: www.radiogearguide.com